



11 December 2020

Edition 25

# AUSTRALIAN NOTICES TO MARINERS

## Notices 1018 - 1063



*The Hydrographer and Staff of the Australian Hydrographic Office  
wish all users of Australian Navigational Products a Merry Christmas,  
a Happy New Year and safe, successful voyages in 2021.*



Published fortnightly by the Australian Hydrographic Office

Australian Notices to Mariners are the authority for correcting charts and publications published by the Australian Hydrographic Office covering Australia, Papua New Guinea, Solomon Islands, Australian Antarctic Territory and Timor-Leste.

Commodore F.T. FREEMAN RAN  
*Hydrographer of Australia*

---

### SECTIONS.

- I. **Australian Notices to Mariners, including blocks and notes.**
- II. **Hydrographic Reports.**

### SUPPLEMENTS.

- I. **Tracings**
  - II. **Cumulative List of Australian Notices to Mariners.**
  - III. **Cumulative List of Temporary and Preliminary Australian Notices to Mariners.**
  - IV. **Temporary and Preliminary Notices in force.**
- 
- 

© Commonwealth of Australia 2020

This work is copyright. Apart from any use permitted under the Copyright Act 1968, no part may be reproduced by any process, adapted, communicated or commercially exploited without prior written

permission from The Commonwealth represented by the Australian Hydrographic Office.

AHP 18

## IMPORTANT NOTICE

This edition of Notices to Mariners includes all significant information affecting AHO products which the AHO has become aware of since the last edition. All reasonable efforts have been made to ensure the accuracy and completeness of the information, including third party information, on which these updates are based. The AHO regards third parties from which it receives information as reliable, however the AHO cannot verify all such information and errors may therefore exist. The AHO does not accept liability for errors in third party information.

---

## GENERAL INSTRUCTIONS

The substance of these notices should be inserted on the charts affected.

Bearings are referred to the true compass and are reckoned clockwise from North; those relating to lights are given as seen by an observer from seaward.

Positions quoted in notices relate to WGS84 which is the horizontal datum for all charts produced by the Australian Hydrographic Office.

The range quoted for a light is its nominal range.

Depths are with reference to the chart datum of each chart. Heights are above mean high water springs or mean higher high water, as appropriate.

The capital letter (P) or (T) after the number of any notice denotes a preliminary or temporary notice respectively, which are contained separately at the end of the permanent notices.

---

## REPORTING OF DANGERS

Mariners are particularly requested to notify the AUSTRALIAN HYDROGRAPHIC OFFICE, Locked Bag 8801 Wollongong, NSW 2500 (Fax 02-4223 6599, e-mail [datacentre@hydro.gov.au](mailto:datacentre@hydro.gov.au) or, alternatively by filling in and submitting the [Hydrographic Notes](#) forms located on the web site – [www.hydro.gov.au](http://www.hydro.gov.au)), immediately on the discovery of new dangers or suspected dangers to navigation. For changes or defects in aids to navigation notify AusSAR (Fax 02-6230 6868 or email [rccaus@amsa.gov.au](mailto:rccaus@amsa.gov.au)).

---

## AUTHORISED USE

Copies of Australian notices are available free of charge from the Australian Hydrographic Office (AHO) website ([www.hydro.gov.au](http://www.hydro.gov.au)) and through the eNotices (email) service ([www.hydro.gov.au/enotices/enotices.htm](http://www.hydro.gov.au/enotices/enotices.htm)).

Individual Notices may be copied for the purpose of inserting Notice substance on official charts and publications. Paper copies may be printed by chart agents and distributed to customers on a cost recovery basis. Participating chart agents are listed on the AHO website as providing a 'Paper Notices to Mariners' service ([www.hydro.gov.au/webapps/jsp/agents/agents-list.jsp](http://www.hydro.gov.au/webapps/jsp/agents/agents-list.jsp)). Copies of the notices may not be sold for profit without prior written agreement.

## NUMERICAL INDEX OF NOTICES TO MARINERS

### Edition No 25

Notices	Aus Chart, INT Chart, ENC Cell, AHP, BA Pubs
1018	Aus 389, PNG 389
1019	Aus 244, 245, 246, 271, 272, 280, 281
1020	Amendment to Mariner's Handbook for Australian Waters AHP20
1021	Aus 195, 808
1022	Aus 237
1023	Aus 241
1024	Aus 249, 250, 823, 824
1025	Aus 270
1026	Aus 490
1027	Aus 4622, INT 622
1028	Aus 4622, INT 622, PNG 388
1029	Aus 13, 305, 710
1030	Aus 722
1031	Aus 310
1032	Aus 69
1033	Aus 117
1034	Aus 117
1035	Aus 346, 485
1036	Aus 120
1037	Aus 135
1038	Aus 141
1039	Aus 154
1040	Aus 181
1041	Aus 150
1042	Aus 175
1043(T)	Aus 207, 209, 489, 809, 810
1044(T)	Aus 263, 264
1045(T)	Aus 264
1046(T)	Aus 262
1047(T)	Aus 814
1048(T)	Aus 4620, 4621, INT 620, 621, PNG 508, 628
1049(P)	Aus 842
1050(T)	Aus 24, 25, 26, 27, 29, 309, 314, 315, 316, 722, 4721, 4722, INT 721, 722
1051(T)	Aus 65
1052(T)	Aus 65
1053(T)	Aus 328
1054(T)	Aus 325, 326
1055(T)	Aus 57, 327, 742
1056(T)	Aus 328, 329, 744
1057(T)	Aus 130, 485, 781
1058(T)	Aus 122
1059(T)	Aus 135
1060(T)	Aus 357, 487
1061(T)	Aus 154
1062(T)	Aus 143, 155, 157, 158
1063(T)	Aus 171, 173, 795, 796

# NUMERICAL INDEX OF CHARTS AFFECTED

## Edition No 25

Aus Chart	Notices
Aus 13	1029
Aus 24	1050(T)
Aus 25	1050(T)
Aus 26	1050(T)
Aus 27	1050(T)
Aus 29	1050(T)
Aus 57	1055(T)
Aus 65	1051(T), 1052(T)
Aus 69	1032
Aus 117	1033, 1034
Aus 120	1036
Aus 122	1058(T)
Aus 130	1057(T)
Aus 135	1037, 1059(T)
Aus 141	1038
Aus 143	1062(T)
Aus 150	1041
Aus 154	1039, 1061(T)
Aus 155	1062(T)
Aus 157	1062(T)
Aus 158	1062(T)
Aus 171	1063(T)
Aus 173	1063(T)
Aus 175	1042
Aus 181	1040
Aus 195	1021
Aus 207	1043(T)
Aus 209	1043(T)
Aus 237	1022
Aus 241	1023
Aus 244	1019
Aus 245	1019
Aus 246	1019
Aus 249	1024
Aus 250	1024
Aus 262	1046(T)
Aus 263	1044(T)
Aus 264	1044(T), 1045(T)
Aus 270	1025
Aus 271	1019
Aus 272	1019
Aus 280	1019
Aus 281	1019
Aus 305	1029
Aus 309	1050(T)
Aus 310	1031
Aus 314	1050(T)
Aus 315	1050(T)
Aus 316	1050(T)
Aus 325	1054(T)
Aus 326	1054(T)
Aus 327	1055(T)
Aus 328	1053(T), 1056(T)
Aus 329	1056(T)

Aus Chart	Notices
Aus 346	1035
Aus 357	1060(T)
Aus 389	1018
Aus 485	1035, 1057(T)
Aus 487	1060(T)
Aus 489	1043(T)
Aus 490	1026
Aus 710	1029
Aus 722	1030, 1050(T)
Aus 742	1055(T)
Aus 744	1056(T)
Aus 781	1057(T)
Aus 795	1063(T)
Aus 796	1063(T)
Aus 808	1021
Aus 809	1043(T)
Aus 810	1043(T)
Aus 814	1047(T)
Aus 823	1024
Aus 824	1024
Aus 842	1049(P)
Aus 4620	1048(T)
Aus 4621	1048(T)
Aus 4622	1027, 1028
Aus 4721	1050(T)
Aus 4722	1050(T)
PNG 388	1028
PNG 389	1018
PNG 508	1048(T)
PNG 628	1048(T)

INT Chart	Notices
INT 620	1048(T)
INT 621	1048(T)
INT 622	1027, 1028
INT 721	1050(T)
INT 722	1050(T)

**1018 AUSTRALIA - Products - New Charts, New Editions, Withdrawn Charts**

Australian Hydrographic Office , UKHO

**New Charts**

<i>Chart</i>	<i>Title</i>	<i>Scale</i>	<i>Publication Date</i>	<i>Remarks</i>
PNG 389	Papua New Guinea - North Coast - Kairiru Island to Vanimo Harbour 1° 58'·6 S – 3° 46'·0 S 141° 00'·0 E – 144° 02'·7 E	1:300 000	11 December 2020	Adoption of Papua New Guinea chart numbering. Replaces Aus 389. General updating throughout; including latest bathymetric data

**New Editions and Withdrawn Charts**

<i>Chart</i>	<i>Title</i>	<i>Scale</i>	<i>Publication Date</i>	<i>Remarks</i>
NIL				

**New Electronic Navigation Chart (Aus ENC)**

<i>Cell Name</i>	<i>Title</i>	<i>Publication Date</i>	<i>Remarks</i>
NIL			

**Charts withdrawn**

<i>Chart</i>	<i>Remarks</i>
Aus 389	On publication of new chart PNG 389

**Admiralty publication**

<i>NP No</i>	<i>Title</i>	<i>Date</i>	<i>Remarks</i>
NP283(2)	ADMIRALTY List of Radio Signals. Maritime Safety Information Services. The Americas, Far East and Oceania. Volume 3(2) 1st Edition, 2020.	10/12/2020	The previous 2020 Edition is cancelled.

**Chart permanently withdrawn**

Charts listed above as withdrawn no longer meet chart carriage requirements and should be marked as "superseded" and replaced with the new chart/ new edition listed prior to passage through the area covered by the new chart.

When placing orders with a chart agent between notice of forthcoming edition and its publication, mariners should advise whether their order pertains to the current edition or the new edition.

For further details refer to the AHO website at [www.hydro.gov.au](http://www.hydro.gov.au) for new edition and new chart stock arrival information.

**1019 AUSTRALIA - Products - New Charts and New Editions to be published shortly**

Australian Hydrographic Office

**New Charts to be published shortly**

Chart	Title	Scale	Remarks
NIL			

**New Editions to be published shortly**

Chart	Title	Scale	Remarks
Aus 245	Australia - East Coast - Queensland - Port of Gladstone	1:25 000	New edition with general updating throughout; including latest bathymetric data.
Aus 246	Australia - East Coast - Queensland - Approaches to Gladstone	1:37 500	New edition with general updating throughout; including latest bathymetric data.

**Charts to be withdrawn without replacement 8 January 2021**

Chart	Title	Scale	Publication Date
Aus 244 <b>Edition 1</b>	Australia - East Coast - Queensland - South Trees Point to Auckland Point	1:10 000	30 January 2015
Aus 271 <b>Edition 1</b>	Australia - East Coast - Queensland - Auckland Point to Fishermans Landing Wharves	1:10 000	29 August 2014
Aus 272 <b>Edition 1</b>	Australia - East Coast - Queensland - Fishermans Landing Wharves to Laird Point	1:10 000	29 August 2014

**Charts to be withdrawn without replacement 22 January 2021**

Aus 280 <b>Edition 5</b>	Australia - East Coast - Queensland - Plans in Queensland (Sheet 3) Plans: Magpie Reef to Eden Reef Flinders Group	1:75 000 1:50 000	22 February 2019
Aus 281 <b>Edition 3</b>	Australia - East Coast - Queensland - First Three Mile Opening to Cape Direction	1:75 000	22 February 2019

**1020 AUSTRALIA - Product - Amendment to Mariner's Handbook for Australian Waters AHP20**

Australian Hydrographic Office

Chapter 9 – Notes - page 177 - Note 1, REEFVTS now referred to as Reef VTS

*Insert* accompanying block

Chapter 9 – Pages 172, 173, 174, 175, 176

*Replace* pages with accompanying block

**1021 AUSTRALIA - NEW SOUTH WALES - Port Kembla - VTS**

Port Authority of New South Wales

**Aus 195 [NE 24/7/2020]**

Insert	magenta dashed line with legend, <i>Port Kembla VTS (see Note)</i> , between	34° 30'.400 S	150° 53'.500 E
		34° 30'.400 S	151° 03'.600 E
	magenta dashed line with legend, <i>Port Kembla VTS (see Note)</i> , between	34° 25'.331 S	150° 54'.645 E
		34° 25'.326 S	150° 54'.660 E
		34° 22'.154 S	150° 55'.822 E
		34° 22'.104 S	150° 55'.838 E
		34° 18'.400 S	150° 56'.473 E
	accompanying note	34° 23'.3 S	150° 53'.5 E

**Aus 808 [646/2020]**

Insert	magenta dashed line with legend, <i>Port Kembla VTS (see Note)</i> , between	34° 30'.40 S	150° 53'.50 E
		34° 30'.40 S	151° 04'.50 E
		34° 10'.15 S	151° 04'.50 E
		34° 18'.09 S	150° 56'.53 E
		34° 22'.10 S	150° 55'.84 E
		34° 22'.15 S	150° 55'.82 E
		34° 25'.27 S	150° 54'.68 E
	accompanying note	34° 05'.5 S	150° 55'.0 E

**1022 AUSTRALIA - QUEENSLAND - Brisbane River - Lytton Rocks Reach - Nomenclature**

Maritime Safety Queensland Notice 434/2020

**Aus 237 [690/2020]**

Amend	name to <i>Ampol Lytton Products Wharf</i>	27° 24'.40 S	153° 09'.24 E
-------	--	--------------	---------------

**1023 AUSTRALIA - QUEENSLAND - Great Sandy Strait - Mary River - Beaver Rock - Nav aids; coastline**

Maritime Safety Queensland Notice 426/2020

**Aus 241 [985/2020]**

Insert	accompanying block	25° 29'.6 S	152° 50'.3 E
--------	--------------------	-------------	--------------

**1024 AUSTRALIA - QUEENSLAND - Mackay - Slade Rock - Light buoys**

Maritime Safety Queensland Notice 440/2020

**Aus 249 [848/2020]**

Insert	isolated danger cylindrical light buoy, <i>Fl(2)6s</i> , without topmark	21° 05'.15 S	149° 14'.36 E
Delete	light buoy	21° 05'.2 S	149° 14'.3 E

**Aus 250 (Mackay Harbour) [944/2020]**

Insert	isolated danger cylindrical light buoy, <i>Fl(2)6s</i> , without topmark	21° 05'.152 S	149° 14'.358 E
Delete	light buoy	21° 05'.15 S	149° 14'.29 E

**Aus 823 [693/2020]**

Insert	isolated danger cylindrical light buoy, <i>Fl(2)6s</i> , without topmark	21° 05'.15 S	149° 14'.36 E
Delete	light buoy	21° 05'.2 S	149° 14'.3 E

**Aus 824 [694/2020]**

Insert	isolated danger cylindrical light buoy, <i>Fl(2)6s</i> , without topmark	21° 05'.15 S	149° 14'.36 E
Delete	light buoy	21° 05'.2 S	149° 14'.3 E

**1025 AUSTRALIA - QUEENSLAND - Port Douglas - Depths**

Maritime Safety Queensland

**Aus 270 (Port Douglas) [986/2020]**

Replace	depth, 0 <sub>3</sub> m, with drying height, 0 <sub>2</sub> m, and extend contour S to enclose	16° 29'.13 S	145° 27'.48 E
---------	--	--------------	---------------

**1026 AUSTRALIA - QUEENSLAND - Swain Reefs - Ship reporting system**

Maritime Safety Queensland

**Aus 490 [901/2020]**Amend legend to *Swain VHF 14 (see SRS Note)*

21° 50'.0 S

153° 08'.0 E

**1027 PAPUA NEW GUINEA - Kairiru Island to Vanimo Harbour - Chart name**

Australian Hydrographic Office

**Aus 4622 (INT 622) [947/2020]**Amend legend to *PNG 389*

2° 00'.0 S

143° 57'.0 E

**1028 PAPUA NEW GUINEA - Sixdiv Shoal - Depth**

Australian Hydrographic Office

**Aus 4622 (INT 622) [1027/2020]**Replace depth, 4<sub>4</sub>m, with depth, 3<sub>9</sub>m

3° 31'.0 S

143° 42'.0 E

**PNG 388 [NC 4/9/2020]**Replace depth, 4<sub>3</sub>m, with depth, 3<sub>9</sub>m

3° 31'.1 S

143° 41'.7 E

**1029 AUSTRALIA - NORTHERN TERRITORY - Bing Bong - Nav aids; anchorages**

Transshipment Services Australia

**Aus 13 (Bing Bong) [615/2018]**Insert special spherical light buoy, *Fl(5)Y.20s*, without topmark

15° 36'.274 S

136° 23'.795 E

**Aus 305 [868/2016]**Insert anchor berth, desig *NR2*

15° 21'.38 S

136° 33'.35 E

anchor berth, desig *NR3*

15° 21'.56 S

136° 36'.51 E

**Aus 710 [868/2016]**Insert anchor berth, desig *NR2*

15° 21'.38 S

136° 33'.35 E

anchor berth, desig *NR3*

15° 21'.56 S

136° 36'.51 E

out of position lit yellow barrel mooring buoy, *Fl.Y.3s*

15° 21'.70 S

136° 33'.36 E

special spherical light buoy, *Fl(5)Y.20s*, without topmark

15° 21'.82 S

136° 34'.76 E

anchor berth, desig *NR1*

15° 25'.51 S

136° 30'.96 E

lit yellow barrel mooring buoy, *Fl.Y.3s*

15° 25'.64 S

136° 30'.60 E

lit yellow barrel mooring buoy, *Fl.Y.3s*

15° 34'.64 S

136° 23'.81 E

Replace lit mooring buoy with lit yellow barrel mooring buoy, *Fl.Y.3s*

15° 32'.2 S

136° 25'.3 E

lit mooring buoy with lit yellow barrel mooring buoy, *Fl.Y.3s*

15° 32'.6 S

136° 25'.2 E

lit mooring buoy with lit yellow barrel mooring buoy, *Fl.Y.3s*

15° 33'.1 S

136° 25'.0 E

**1030 AUSTRALIA - NORTHERN TERRITORY - Fenton Patches - Scientific instrument**

Australian Institute of Marine Science

**Aus 722 [987/2020]**Insert special conical light buoy, *Fl.Y.2.5s*, without topmark

12° 10'.02 S

130° 46'.97 E

**1031 AUSTRALIA - NORTHERN TERRITORY - Melville Island - Cape Van Diemen - Scientific instrument northwestwards**

Australian Institute of Marine Science

**Aus 310 [908/2020]**Insert special conical light buoy, *Fl(5)Y.20s*, without topmark

10° 24'.92 S

129° 59'.80 E



**1032 AUSTRALIA - WESTERN AUSTRALIA - Beadon Creek - Infrastructure; nav aids; depths**

Former Notice - 172(T)/2020 is cancelled  
Argonaut Marine Group

Note: Smaller scale charts will be updated in due course.

**Aus 69 (Onslow) [1312/2019]**

Insert	accompanying block B	21° 37'.1 S	115° 07'.5 E
	accompanying block A	21° 38'.3 S	115° 08'.0 E

**1033 AUSTRALIA - WESTERN AUSTRALIA - Cockburn Sound - Mangles Bay - Scientific instruments**

Department of Transport WA Notice WA001/106/2020

**Aus 117 [195/2020]**

Insert	special pillar light buoy, <i>Fl. Y. 4s</i> , without topmark	32° 15'.744 S	115° 42'.851 E
	special conical light buoy, <i>Fl. Y. 4s</i> , without topmark	32° 16'.372 S	115° 42'.161 E

**1034 AUSTRALIA - WESTERN AUSTRALIA - Cockburn Sound - Scientific instruments**

Fremantle Ports Notice 12/2020

**Aus 117 [1033/2020]**

Insert	special pillar light buoy, <i>Fl. Y. 6s</i> , without topmark	32° 09'.270 S	115° 41'.630 E
	special conical light buoy, <i>Fl. Y. 6s</i> , without topmark	32° 09'.450 S	115° 40'.760 E
	special conical light buoy, <i>Fl. Y. 6s</i> , without topmark	32° 11'.200 S	115° 45'.590 E
	special conical light buoy, <i>Fl. Y. 6s</i> , without topmark	32° 11'.540 S	115° 44'.710 E
	special pillar light buoy, <i>Fl. Y. 6s</i> , without topmark	32° 11'.970 S	115° 44'.460 E
	special pillar light buoy, <i>Fl. Y. 6s</i> , without topmark	32° 15'.050 S	115° 43'.690 E

**1035 AUSTRALIA - SOUTH AUSTRALIA - Kangaroo Island - NW Snare - Depths**

European Space Agency

**Aus 346 [240/2020]**

Insert	contour value, 30	36° 01'.82 S	137° 12'.30 E
--------	-------------------	--------------	---------------

Move	depth, 3 <sub>7</sub> m, and extend contour E to enclose to	36° 02'.1 S	137° 11'.1 E
		36° 02'.04 S	137° 11'.67 E

Delete	depth, 28 <sub>5</sub> m	36° 02'.0 S	137° 12'.2 E
--------	--------------------------	-------------	--------------

**Aus 485 [150/2020]**

Move	depth, 3 <sub>7</sub> m, and extend contour E to enclose to	36° 02'.1 S	137° 11'.1 E
		36° 02'.04 S	137° 11'.67 E

**1036 AUSTRALIA - SOUTH AUSTRALIA - Thevenard - Cape Vivonne - Light**

Department for Infrastructure and Transport SA Notice 32/2020

**Aus 120 [860/2020]**

Delete	light and emanating sector	32° 11'.8 S	133° 40'.8 E
--------	----------------------------	-------------	--------------

**1037 AUSTRALIA - SOUTH AUSTRALIA - Whyalla - Bearing**

Hydro Survey

**Aus 135 (Whyalla) [706/2019]**

Amend	legend to 215.5°	33° 00'.98 S	137° 35'.66 E
-------	------------------	--------------	---------------

**1038 AUSTRALIA - VICTORIA - Apollo Bay - Nav aids**

Colac Otway Shire Notice 342/2020

**Aus 141 (Apollo Bay) [242/2020]**

Insert	light, <i>Dir WRG</i>	38° 45'.268 S	143° 40'.169 E
	a dashed line in a direction 080° for a distance of 790m, thence a continuous line for 1580m, with legend 260°, emanating from light	38° 45'.268 S	143° 40'.169 E
Move	legend, 187·5°	38° 45'.09 S	143° 40'.69 E
	to	38° 45'.27 S	143° 40'.73 E
Delete	continuous line, between	38° 45'.19 S	143° 40'.71 E
		38° 45'.02 S	143° 40'.74 E

**Aus 141 (Apollo Bay Boat Harbour) [242/2020]**

Insert	dashed line, between	38° 45'.257 S	143° 40'.250 E
		38° 45'.194 S	143° 40'.708 E
	continuous line with legend ≠ <i>Dir</i> 260°, between	38° 45'.194 S	143° 40'.708 E
		38° 45'.122 S	143° 41'.225 E
Move	legend, 187·5°	38° 45'.16 S	143° 40'.71 E
	to	38° 45'.22 S	143° 40'.69 E
Delete	continuous line, between	38° 45'.19 S	143° 40'.71 E
		38° 45'.12 S	143° 40'.72 E

**1039 AUSTRALIA - VICTORIA - Port Phillip - Yarra River - Short Road Wharf - Lights**

Victorian Ports Corporation (Melbourne)

**Aus 154 [308/2020]**

Insert	light, <i>Fl. Y. 3s</i>	37° 50'.048 S	144° 53'.911 E
	light, <i>Fl. Y. 3s</i>	37° 50'.071 S	144° 53'.908 E

**1040 AUSTRALIA - VICTORIA - Port Welshpool to Port Albert - Nav aids**

Gippsland Ports

**Aus 181 [954/2020]**

Insert	structure colour, <i>R</i>	38° 43'.40 S	146° 33'.75 E
Replace	buoy with west cardinal cylindrical buoy, <i>No1</i> , with topmark	38° 41'.0 S	146° 38'.0 E
	buoy with port lateral beacon, <i>No6</i> , with topmark	38° 42'.4 S	146° 30'.4 E
	buoy with port lateral cylindrical buoy, <i>No18</i> , without topmark	38° 42'.9 S	146° 32'.3 E
	beacon with port lateral cylindrical buoy, <i>No20</i> , without topmark	38° 42'.9 S	146° 32'.5 E

**1041 AUSTRALIA - VICTORIA - Western Port - Eastern Entrance - Depths**

Parks Victoria

**Aus 150 [913/2020]**

Insert	contour, between	38° 31'.85 S	145° 20'.93 E
		38° 31'.66 S	145° 21'.10 E
		38° 31'.77 S	145° 21'.07 E
		38° 31'.82 S	145° 21'.13 E
		38° 31'.72 S	145° 21'.20 E
Delete	contour, between	38° 31'.79 S	145° 21'.26 E
		38° 31'.9 S	145° 20'.9 E
		38° 31'.4 S	145° 21'.3 E
		38° 31'.8 S	145° 21'.1 E
		38° 31'.8 S	145° 21'.1 E
	contour, between	38° 31'.8 S	145° 21'.3 E

**Aus 150 (Eastern Entrance to Western Port) [913/2020]**

Insert	contour, between	38° 31'.862 S	145° 20'.904 E
		38° 31'.655 S	145° 21'.100 E
		38° 31'.772 S	145° 21'.074 E
		38° 31'.82 S	145° 21'.13 E
		38° 31'.72 S	145° 21'.20 E
	contour, between	38° 31'.79 S	145° 21'.26 E
	depth, 1 <sub>2</sub> m, enclosed by contour	38° 32'.496 S	145° 21'.253 E
Delete	contour, between	38° 31'.86 S	145° 20'.90 E
		38° 31'.25 S	145° 21'.46 E
		38° 31'.77 S	145° 21'.07 E
		38° 31'.8 S	145° 21'.1 E
		38° 31'.8 S	145° 21'.3 E
	depth, 5 <sub>3</sub> m	38° 31'.64 S	145° 21'.16 E
	depth, 2 <sub>2</sub> m	38° 32'.53 S	145° 21'.26 E

**Aus 150 (The Narrows) [913/2020]**

Insert	depth, 2m, enclosed by contour	38° 30'.939 S	145° 21'.966 E
	depth, 4 <sub>6</sub> m, enclosed by contour	38° 31'.156 S	145° 21'.868 E
	depth, 4 <sub>7</sub> m, enclosed by contour	38° 31'.177 S	145° 21'.883 E
	depth, 14 <sub>2</sub> m	38° 31'.241 S	145° 21'.717 E
Delete	depth, 2 <sub>3</sub> m	38° 30'.95 S	145° 21'.97 E
	depth, 7 <sub>4</sub> m	38° 31'.18 S	145° 21'.88 E
	depth, 21 <sub>8</sub> m, and enclosing contour	38° 31'.24 S	145° 21'.71 E
	15m contour, centred on	38° 31'.24 S	145° 21'.72 E

**1042 AUSTRALIA - TASMANIA - Spring Bay - Triabunna - Light buoy**

Marine and Safety Tasmania Notice M238/2020

**Aus 175 [174/2017]**

Replace	light beacon with port lateral pillar light buoy, <i>Fl.R.</i> 2s, with topmark	42° 31'.21 S	147° 54'.82 E
---------	---	--------------	---------------

**1043(T)/2020 AUSTRALIA - NEW SOUTH WALES - Stockton Bight - Survey operations; scientific instruments**  
 Port Authority of New South Wales Notice 4/2020

MV *Offshore Guardian* is conducting survey operations in an area bounded by the following positions:

33° 03'.98 S 151° 51'.68 E  
 32° 51'.00 S 152° 10'.47 E  
 32° 47'.69 S 152° 07'.65 E  
 32° 48'.18 S 152° 05'.87 E  
 32° 47'.96 S 152° 03'.50 E  
 32° 51'.37 S 151° 53'.77 E  
 32° 54'.65 S 151° 51'.44 E  
 along the arc of Newcastle Port Limit to  
 32° 58'.11 S 151° 46'.34 E  
 32° 59'.75 S 151° 45'.92 E.

The vessel will display appropriate lights and shapes and will monitor VHF Ch 16/09.

Special light buoys, Q.Y, exist in the following positions:

32° 47'.9 S 152° 04'.4 E  
 32° 51'.3 S 152° 08'.7 E  
 32° 56'.3 S 151° 50'.6 E  
 32° 59'.8 S 151° 46'.8 E  
 33° 03'.2 S 151° 51'.4 E.

Mariners are advised to navigate with caution in the area.

**Chart temporarily affected - Aus 207 - Aus 209 - Aus 489 - Aus 809 - Aus 810**

**1044(T)/2020 AUSTRALIA - QUEENSLAND - Cairns - Dredging operations completed**

*Former Notice - 760(T)/2020 is cancelled*  
 Maritime Safety Queensland

Cancel this notice on receipt.

**Chart formerly affected - Aus 263 - Aus 264**

**1045(T)/2020 AUSTRALIA - QUEENSLAND - Cairns - Trinity Inlet - Wreck salvaged**

*Former Notice - 917(T)/2020 is cancelled*  
 Maritime Safety Queensland

Cancel this notice on receipt.

**Chart formerly affected - Aus 264**

**1046(T)/2020 AUSTRALIA - QUEENSLAND - Holloways Beach - Dredging operations**

Maritime Safety Queensland Notice 437(T)/2020

Dredge *CSD Mabuiag* is conducting dredging operations in the vicinity of position 16° 49'.4 S 145° 44'.0 E.

A floating pipeline, marked by flashing yellow lights, exists from the dredge to Holloways Beach.

Mariners are advised to navigate with caution in the area.

**Chart temporarily affected - Aus 262**

**1047(T)/2020 AUSTRALIA - QUEENSLAND - Point Danger - Light buoy off station northeastwards**

Department of Agriculture and Fisheries

The special light buoy, *Fl.Y.3s FAD* (28° 02'.98 S 153° 39'.40 E), is off station and in position 28° 05'.13 S 153° 40'.31 E.

**Chart temporarily affected - Aus 814**

**1048(T)/2020 PAPUA NEW GUINEA - Meimeara Island - Light unlit**

National Maritime Safety Authority PNG Coastal Navigation Warning 40/2020

The light, *Fl.2-5s 35m 10M* (10° 13'.46 S 150° 52'.99 E), is unlit.**Chart temporarily affected - Aus 4620 (INT 620) - Aus 4621 (INT 621) - PNG 508 - PNG 628****1049(P)/2020 AUSTRALIA - TORRES STRAIT - Deliverance Island - Shoaling**HMAS *Albany*

Latest survey shows shoaling exists as follows:

<i>Depth</i>	<i>Position</i>
1.1m	9° 32'.89 S 141° 27'.03 E
3.6m	9° 32'.22 S 141° 27'.73 E.

Mariners are advised to navigate with caution in the area.

Charts will be updated in due course.

**Chart which will be affected - Aus 842****1050(T)/2020 AUSTRALIA - NORTHERN TERRITORY - Darwin to Sahul Banks - Survey and geotechnical operations completed***Former Notice - 775(T)/2020 is cancelled*

Port Authority of New South Wales Notice 4/2020

Cancel this notice on receipt.

**Chart formerly affected - Aus 24 - Aus 25 - Aus 26 - Aus 27 - Aus 29 - Aus 309 - Aus 314 - Aus 315 - Aus 316 - Aus 722 - Aus 4721 (INT 721) - Aus 4722 (INT 722)****1051(T)/2020 AUSTRALIA - WESTERN AUSTRALIA - Barrow Island - Light buoy restored***Former Notice - 674(T)/2020 is cancelled*

Chevron Australia

Cancel this notice on receipt.

**Chart formerly affected - Aus 65****1052(T)/2020 AUSTRALIA - WESTERN AUSTRALIA - Barrow Island - Town Point - Light buoy relit***Former Notice - 673(T)/2020 is cancelled*

Chevron Australia

Cancel this notice on receipt.

**Chart formerly affected - Aus 65**

**1053(T)/2020 AUSTRALIA - WESTERN AUSTRALIA - Barrow Island - Subsea operations northwestwards**  
Allseas Marine Contractors Australia

On or about 1 January 2021, vessels *Audacia* and *Fotitude* will be conducting pipe laying and subsea operations in areas bounded by the following positions:

19° 52'.47 S 114° 29'.66 E  
19° 49'.25 S 114° 36'.08 E  
19° 48'.30 S 114° 35'.49 E  
19° 51'.48 S 114° 29'.12 E;  
and  
20° 29'.38 S 114° 49'.63 E  
20° 34'.25 S 114° 44'.32 E  
20° 36'.54 S 114° 46'.69 E  
20° 31'.67 S 114° 52'.00 E.

Mariners are advised to navigate with caution in the area.

**Chart temporarily affected - Aus 328**

**1054(T)/2020 AUSTRALIA - WESTERN AUSTRALIA - Bedout Islet - Survey operations northwestwards**  
Santos

MV *Vigilant* is conducting a geophysical survey in an area bounded by the following positions:

19° 04'.37 S 118° 41'.79 E  
19° 04'.32 S 118° 47'.49 E  
18° 58'.90 S 118° 47'.43 E  
18° 58'.95 S 118° 41'.74 E.

Mariners are advised to navigate with caution in the area.

**Chart temporarily affected - Aus 325 - Aus 326**

**1055(T)/2020 AUSTRALIA - WESTERN AUSTRALIA - Dampier Archipelago - Kendrew Island - Scientific instrument**  
Department of Transport WA

A special light buoy, *Fl.Y.2-5s*, exists in position 20° 28'.72 S 116° 31'.02 E.

**Chart temporarily affected - Aus 57 - Aus 327 - Aus 742**

**1056(T)/2020 AUSTRALIA - WESTERN AUSTRALIA - Muiron Islands - Subsea operations northwestwards**  
Sapura Energy Australia

Vessel *Sapura Constructor* is conducting subsea operations in vicinity of position 21° 32'.72 S 114° 05'.71 E.

Mariners are advised to navigate with caution in the area.

**Chart temporarily affected - Aus 328 - Aus 329 - Aus 744**

**1057(T)/2020 AUSTRALIA - SOUTH AUSTRALIA - Port Adelaide - Obstruction westwards removed**  
*Former Notice* - 1048(T)/2016 is cancelled  
Department of Planning, Transport and Infrastructure SA Notice 33/2020

Cancel this notice on receipt.

**Chart formerly affected - Aus 130 - Aus 485 - Aus 781**

**1058(T)/2020 AUSTRALIA - SOUTH AUSTRALIA - Thevenard - Harbour works completed**  
*Former Notice* - 1339(T)/2019 is cancelled  
Department of Planning, Transport and Infrastructure SA

Cancel this notice on receipt.

**Chart formerly affected - Aus 122**

**1059(T)/2020 AUSTRALIA - SOUTH AUSTRALIA - Whyalla - Leading line altered**

Former Notice - 788(T)/2020 is cancelled

Hydro Survey

Cancel this notice on receipt.

**Chart formerly affected - Aus 135****1060(T)/2020 AUSTRALIA - VICTORIA - Golden Beach - Pipeline operations eastwards**

Esso Australia Pty Ltd

On or about 4 January 2021, vessel *Seven Eagle* will be conducting pipeline works between position 38° 19'.07 S 147° 36'.96 E and Barracouta A platform (38° 17'.88 S 147° 40'.48 E).

Mariners are advised to navigate with caution in the area.

**Chart temporarily affected - Aus 357 - Aus 487****1061(T)/2020 AUSTRALIA - VICTORIA - Port Phillip - Webb Dock - Harbour works; light buoys**

Victorian Ports Corporation (Melbourne) Notice 335(T)/2020

Harbour works associated with the installation of a new mooring dolphin at Webb Dock 5 East (37° 51'.01 S 144° 54'.79 E) are in progress.

Special spar light buoys, *Fl. Y*, exist in positions 37° 51'.03 S 144° 54'.79 E and 37° 50'.99 S 144° 54'.83 E to mark the dive and construction site.

Mariners are advised to navigate with caution in the area.

**Chart temporarily affected - Aus 154****1062(T)/2020 AUSTRALIA - VICTORIA - Port Phillip - Scientific instruments**

Parks Victoria Notice 346(T)/2020

Special light buoys, *Fl. Y. 2.5s*, exist in the following positions:

37° 58'.72 S 144° 59'.73 E

38° 08'.16 S 144° 45'.18 E

38° 09'.73 S 145° 03'.26 E

38° 18'.09 S 144° 52'.36 E.

**Chart temporarily affected - Aus 143 - Aus 155 - Aus 157 - Aus 158****1063(T)/2020 AUSTRALIA - TASMANIA - Storm Bay - Scientific instruments**

Marine and Safety Tasmania Notice M239/2020

Scientific instruments exist on the seabed in the following positions:

43° 06'.25 S 147° 41'.52 E

43° 06'.94 S 147° 37'.95 E

43° 07'.63 S 147° 34'.38 E

43° 09'.00 S 147° 27'.23 E

43° 07'.93 S 147° 39'.72 E.

Mariners are advised to navigate with caution in the area.

**Chart temporarily affected - Aus 171 - Aus 173 - Aus 795 - Aus 796**

II

**HYDROGRAPHIC REPORTS**

NIL



*To accompany Australian Notice to Mariners 1021/2020*

PORT KEMBLA VESSEL TRAFFIC SERVICE  
AREA

All vessels proceeding to Port Kembla are required to call the Vessel Traffic Services Centre (VTSC) using the call sign "Port Kembla VTS" on VHF Channel 11 (or Ch 16 if not reachable on Ch 11), two hours and again one hour before arrival to confirm ETA.

*Note for chart Aus 195*

*To accompany Australian Notice to Mariners 1021/2020*

PORT KEMBLA VESSEL TRAFFIC SERVICE  
AREA

All vessels proceeding to Port Kembla are required to call the Vessel Traffic Services Centre (VTSC) using the call sign "Port Kembla VTS" on VHF Channel 11 (or Ch 16 if not reachable on Ch 11), two hours and again one hour before arrival to confirm ETA.

*Note for chart Aus 808*

1. In accordance with NtM 1020/2020 all references throughout AHP20 to REEFVTS should now read Reef VTS.

2. The following categories of ships are required to report to Reef VTS:
  - all ships of 50 metres or greater length overall
  - all oil tankers, liquefied gas carriers, chemical tankers or ships coming within the Irradiated Nuclear Fuel (INF) Code, regardless of length
  - ships which are towing or pushing or being towed or pushed where the length of the tow exceeds 150 metres, or the involvement of one of the vessels listed in the two previous dot points
3. Other vessels transiting the Reef VTS area may report on a voluntary basis.
4. SOLAS Regulation V/11 does not apply to any warship, naval auxiliary, or any ship owned or operated by government. However SOLAS does state that 'such ships are encouraged to participate in ship reporting systems'.
5. Mariners are referred to AMSA Marine Order 63 for details of their obligations under REEFREP. This is available on the AMSA website.

Website:	<a href="http://www.amsa.gov.au">www.amsa.gov.au</a>
----------	--

### 9.3.4 COMMUNICATING WITH GREAT BARRIER REEF AND TORRES STRAIT VESSEL TRAFFIC SERVICE

1. A Very High Frequency (VHF) radio network is available along the Queensland (QLD) coast and Torres Strait to communicate with Reef VTS. Reef VTS keeps a listening watch at all times on the VHF working Channel 11 and 14. See Reef VTS VHF Channel overview.
2. The relationship between VHF Channels and associated Entry/Exit Reporting Points are dependent on a ship's position in relation to the area of that Reporting Point (see table).
3. Position of entry and exit of the Reef VTS area to QLD ports will be upon passing port VTS areas. For those ports with no declared VTS area, port limits will be considered the entry and exit point.

Name of approved Entry/Exit position	VHF Working Channel	Name of approved Entry/Exit position	VHF Working Channel
Bramble	14	Palm Passage	14
Booby	14	Blossom	14
Endeavour	14	Swain	14
Grafton Passage	11	Sandy Cape	14

#### Inmarsat C Messaging

4. Reef VTS will pay the cost of messages sent by Inmarsat C if the ship uses the special access code (SAC) 861 via POR LES 212. When setting up the Inmarsat C address book, select either: ASCII or 7-bit or IA5 for data presentation or character code.
5. Inmarsat C terminals must be logged into the POR.

#### Other Communications

6. If for any reason a ship cannot communicate via Inmarsat C or the VHF working channel, the ship must send the required information to Reef VTS in another way. The ship can use one of the following:

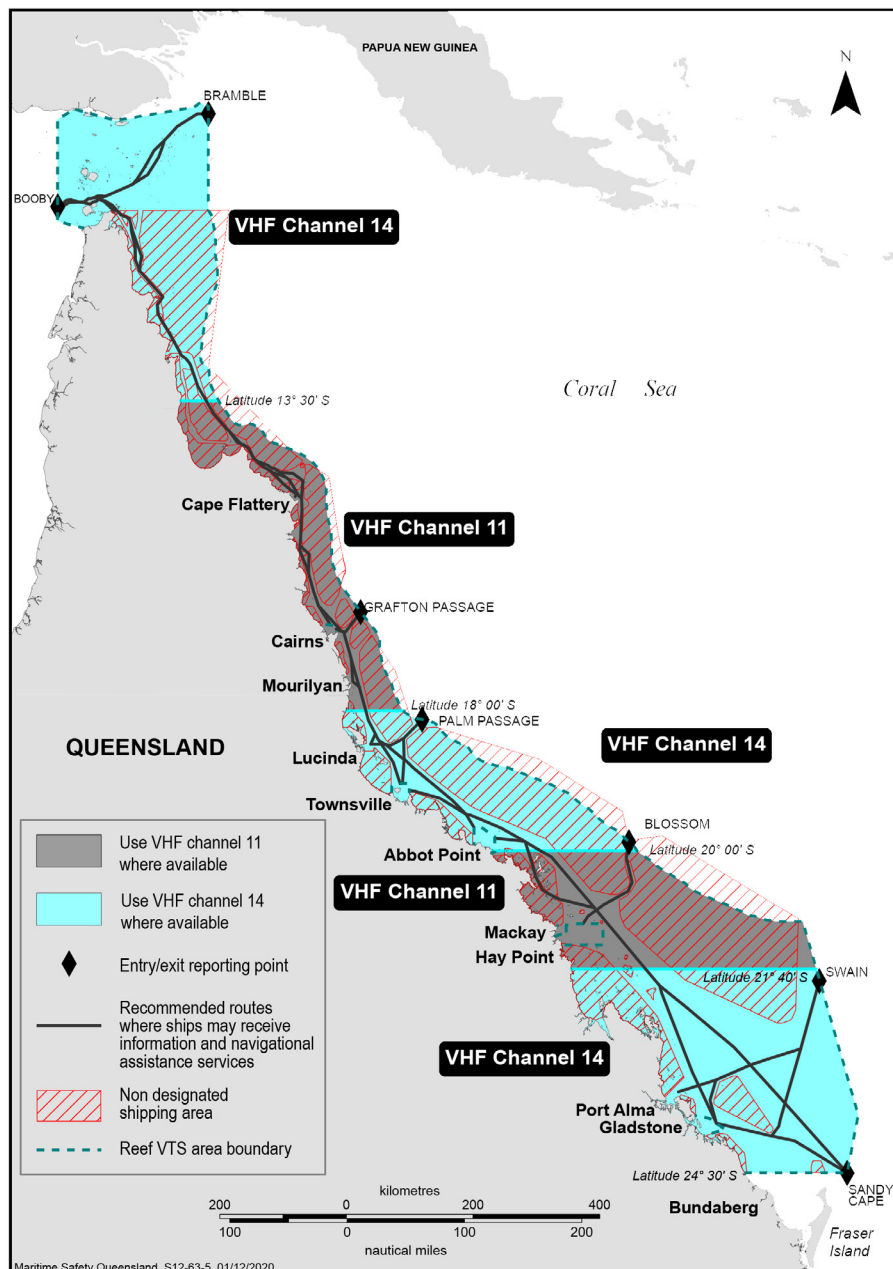
Telephone:	+61 1300 721 293
Fax:	+61 7 4721 0633
Email:	<a href="mailto:reefvts@vtm.qld.gov.au">reefvts@vtm.qld.gov.au</a>

7. If a ship's radio equipment fails and the ship cannot send the required reports to Reef VTS, the failure must be recorded in the ship's radio log book or the official log book.

### 9.3.5 REEF VTS AREA

1. The Reef VTS Area is area of water bounded as follows:
  - (a) the waters bounded by a line commencing at:
    - Slade Point on the coastline of the mainland of Australia on the north-west coast of Cape York Peninsula in approximate position Latitude 10° 56.973' South, Longitude 142° 08.088' East
    - then north-west to Latitude 10° 51.070' South, Longitude 141° 44.130' East
    - then north to Latitude 09° 20.100' South, Longitude 141° 44.130' East

- then north-easterly to Latitude  $09^{\circ} 10.680'$  South, Longitude  $141^{\circ} 58.960'$  East
- then south-easterly to Latitude  $09^{\circ} 20.910'$  South, Longitude  $142^{\circ} 36.066'$  East on the PSSA boundary,
- then generally easterly along the PSSA boundary to its intersection with the meridian of Longitude  $144^{\circ} 00.000'$  East (includes the waters of Torres Strait with Endeavour Strait, Great North East Channel and to Bramble Cay),
- then south along the meridian of Longitude  $144^{\circ} 00.000'$  East to its intersection with the outer edge of the Great Barrier Reef at approximate Latitude  $10^{\circ} 41.000'$  South
- then in a generally south and south-east direction along the outer edge of the Great Barrier Reef to approximate Latitude  $21^{\circ} 00.000'$  South, Longitude  $152^{\circ} 30.000'$  East,
- then east to Latitude  $21^{\circ} 00.000'$  South, Longitude  $152^{\circ} 55.000'$  East,
- then south-easterly to Latitude  $23^{\circ} 42.000'$  South, Longitude  $153^{\circ} 45.000'$  East,
- then generally south-south-westerly to Latitude  $24^{\circ} 30.000'$  South, Longitude  $153^{\circ} 35.000'$  East,
- then east to the coastline at approximate Latitude  $24^{\circ} 30.000'$  South, Longitude  $152^{\circ} 02.581'$  East, then generally northerly following the coastline of the mainland to the starting point by also excluding the Vessel Tracking Service areas at the limits of Gladstone, Hay Point, Mackay, Abbott Point, Townsville



Reef VTS VHF Channel overview

## 9.4 GREAT BARRIER REEF AND TORRES STRAIT VESSEL TRAFFIC SERVICE REPORTS

1. The master is responsible for ensuring the following reports are provided to Reef VTS:
  - Entry Report (ER)
  - Final Report (FR)
2. Additional Reports which may be sent include:
  - Route Deviation Report (DR)
  - Intermediate Position Reports (IP)
  - Defect Reports (IR)
3. Below is the reporting codes reference table:

Entry Report code table

ID	Message type (ER, FR, DR, IP, or IR)	Example
A	Ship name, call sign and IMO number	A/HAPPY SAILOR/ ABCD/1234567
B	Date and time (Coordinated Universal Time (UTC))	B/010200UTC
C	Current Position Latitude and longitude (in degrees and minutes)	C/1120S/14430E
E		
F	Speed The planned speed of the ship in knots and tenths of a knot	F/13.5
G	Last Port of Call/Port Departing from within the Reef VTS area If entering the Reef VTS Area for the first time state the last port of call. If departing from a port within the Reef VTS Area, the name of that port	G/Singapore or G/Hay Point
H	Date, time (UTC) and point of entry to Reef VTS Area Either the name of the entry point or the position (latitude and longitude) of entry of the Reef VTS area	H/010400UTC/BOOBY or C/1030S14120E
I	Next Port of Call Name of the next port of call date and time in UTC	I/Gladstone/050500UTC NOV 16
J	Pilot Company Details Give the pilot company name	J/Australian Reef pilots or J/Torres Pilots
K	Date, time (UTC) and point of exit from area Either the name of the point, or the position (latitude and longitude) of exit leaving from the area	K/042100UTC/SANDY CAPE or K/042100UTC/2420S 15110E
L	Route information Usually a Route Plan Report. Recommended standard route plans, taking into account vessel draught, are set out in the Reef VTS User Guide	L/INNER ROUTE DEEP DRAUGHT or L/ALPHA NORTH VIA VARZIN PASSAGE/ HANNIBAL
M	Communication methods 1) Primary Inmarsat C details: Inmarsat Mobile Number (IMN), manufacturer and model. 2) Ship's satellite phone number	M/423456789/JRC/JUE- 85C or M/870773123456
O	Draught Fore and aft, in metres and decimetres	O/FORE 11.5/AFT 11.3

<b>P</b>	<b>Cargo onboard</b> Give the normal name of cargo and state whether it is classified as hazardous (yes or no).  Note: If required, this information may be given by non-voice means before the first Reef VTS report	P/BULK CHEMICALS/ DG YES
<b>Q</b>	<b>Defects, damage, deficiencies or other limitations</b> Describe details of any damage, failure or breakdown: (i) collision, grounding, fire, explosion, structural failure, flooding, cargo shifting; (ii) failure or breakdown of steering gear, propulsion plant, electrical generating system, essential shipboard navigational equipment	Q/Include details as required
<b>R</b>	<b>Pollution/dangerous goods lost overboard</b> Give brief details of the type of pollution (oil, chemicals and so on) or dangerous goods lost overboard. State the ship's position	R/Include details as required
<b>U</b>	<b>Ship type, length (metres) and gross tonnage</b> Give details of the ship, including ship type, length (metres) and gross tonnage	U/TANKER/180/28000
<b>X</b>	<b>COVID -19 Crew health declaration</b> Is anyone onboard showing any Novel Coronavirus symptoms that include fever, cough, sore throat, headache, difficulty breathing or flu-like symptoms?  <b>Remarks</b> Give any additional information which would help the navigational safety of shipping in the Reef VTS Area; for example, abnormal weather; faulty navigational aid; or any Dangerous Goods (DG), Harmful Substances (HS) or Marine Pollution (MP) incident reports	X/Yes or X/No  X/Include details as required

### 9.4.1 ENTRY REPORT

1. A ER is required at least one hour prior to entering the Reef VTS area or departing from a port within the Reef VTS area.
2. The purpose of a ER is to advise Reef VTS of the ship intentions (e.g. entry to the Reef VTS area) and take the necessary steps to ensure that the ship's Inmarsat C terminal is operational when the vessel enters the region. The vessel's Inmarsat C terminal is to be logged into the POR.
3. The following message fields are required:

Mandatory fields:	A, B, G, H, I, J, K, M, O, P, Q, U
-------------------	------------------------------------

### 9.4.2 FINAL REPORT

1. A final report is required when exiting the Reef VTS area, or when arriving at a port within the Reef VTS area.
2. The following message fields are required:

Mandatory fields:	A, B, K
-------------------	---------

### 9.4.3 INTERMEDIATE POSITION REPORTS

1. In most cases, a ship's position is being tracked by sensors. Therefore intermediate position reports are not required.
2. If the ship's position is not being tracked by sensors, then a brief position report must be given as advised by Reef VTS, until sensor data is obtained, at which time intermediate position reports will no longer be required.
3. The following message fields are required:

Mandatory fields:	A, B, C, F
-------------------	------------

#### 9.4.4 ROUTE DEVIATION REPORT

1. If the ship deviates from the route plan which was sent to Reef VTS, this information should be reported to Reef VTS before the deviation is made. However, in situations where a deviation is made without much warning, a report should be sent to Reef VTS as soon as possible.
2. The following message fields are required:

Mandatory fields:	A, B, K, L, O
-------------------	---------------

#### 9.4.5 DEFECT REPORT

1. An IR must be provided immediately if a ship suffers damage, failure or breakdown which affects the ship safety.
2. The following message fields are required:

Mandatory fields:	A, B, F, Q
Additional fields (if applicable):	R, X

3. The requirement to report all marine incidents including defects and deficiencies using form 'AMSA 18' and form 'AMSA 19' remains.

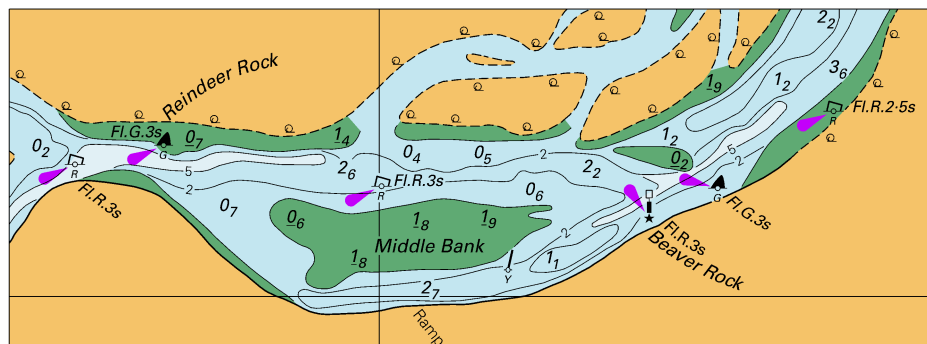
Websites:	<a href="http://www.amsa.gov.au/forms">www.amsa.gov.au/forms</a>
-----------	--

#### 9.4.6 ADDITIONAL INFORMATION

1. For more information the Reef VTS User Guide should be consulted for a more detailed description. Copies of the Reef VTS User Guide are available online, hardcopies are available from Maritime Safety Queensland (MSQ) or can be requested via email.

Websites:	<a href="http://www.msq.qld.gov.au/Shipping/Reefvts.aspx">www.msq.qld.gov.au/Shipping/Reefvts.aspx</a>
Email:	<a href="mailto:reefvts@vtm.qld.gov.au">reefvts@vtm.qld.gov.au</a>

To accompany Australian Notice to Mariners 1023/2020



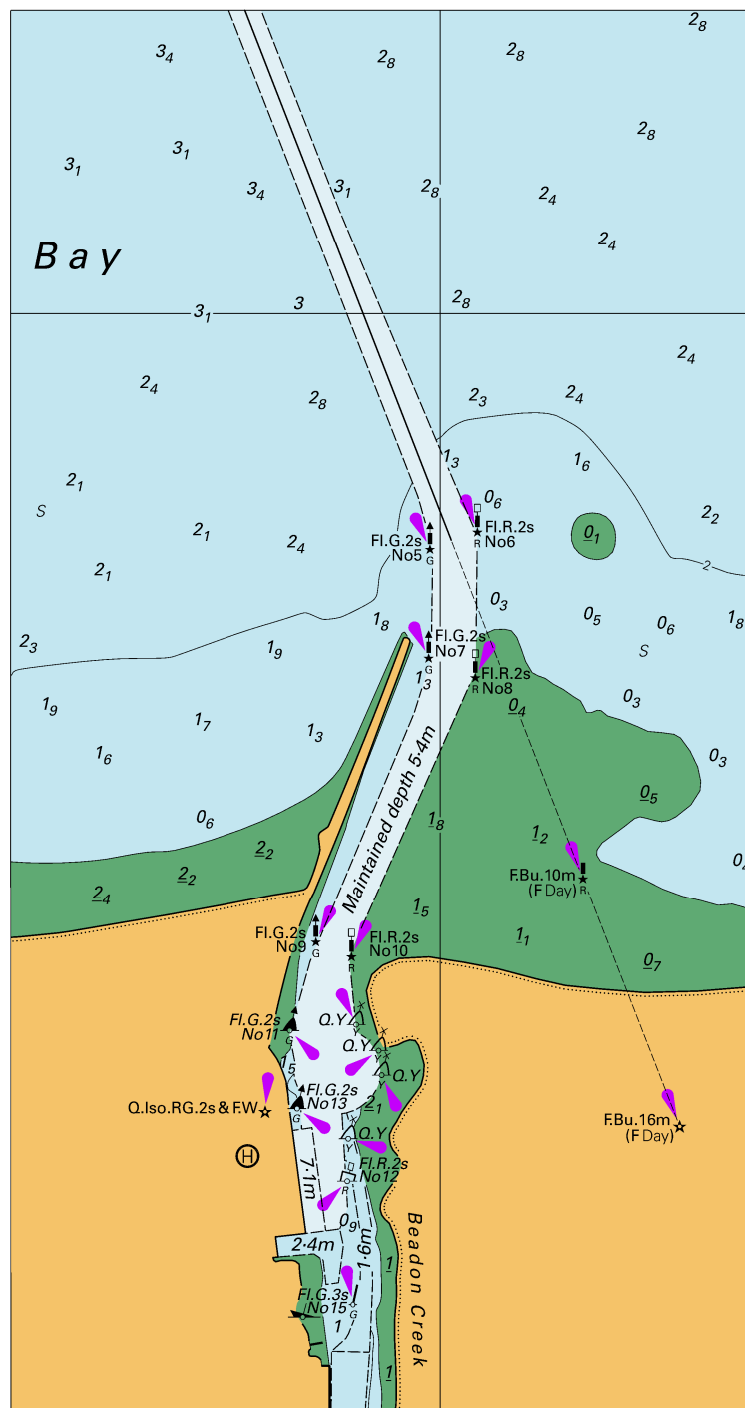
Block for chart Aus 241

© Commonwealth of Australia 2020

(122.3 x 44.7mm)



To accompany Australian Notice to Mariners 1032/2020

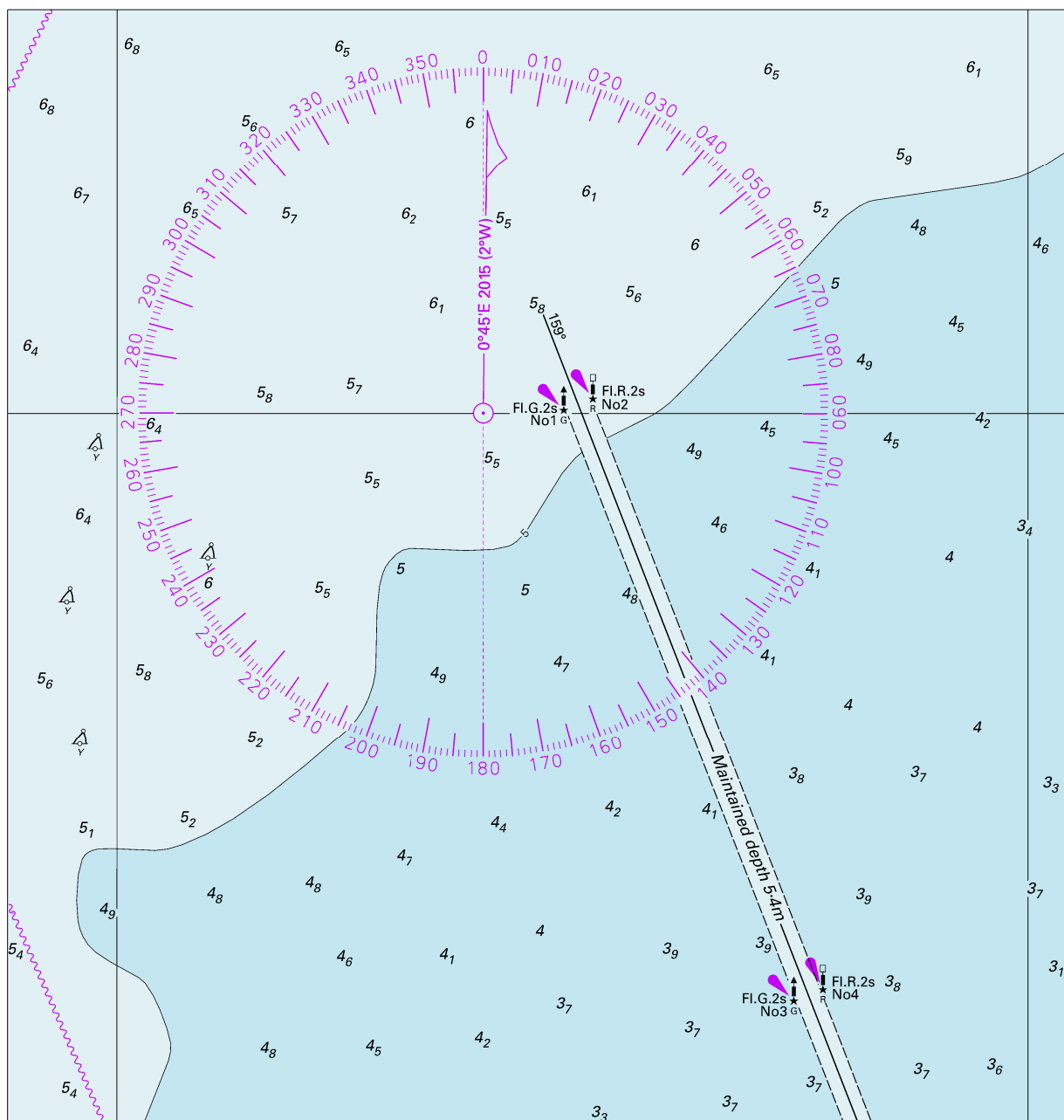


Block A for chart Aus 69

(98.0 x 185.5mm)

© Commonwealth of Australia 2020

To accompany Australian Notice to Mariners 1032/2020



Block B for chart Aus 69

© Commonwealth of Australia 2020

(160.4 x 168.7mm)