



13 November 2020

Edition 23

AUSTRALIAN NOTICES TO MARINERS

Notices 938 - 978

Published fortnightly by the Australian Hydrographic Office



Australian Notices to Mariners are the authority for correcting charts and publications published by the Australian Hydrographic Office covering Australia, Papua New Guinea, Solomon Islands, Australian Antarctic Territory and Timor-Leste.

Commodore F.T. FREEMAN RAN
Hydrographer of Australia

SECTIONS.

- I. **Australian Notices to Mariners, including blocks and notes.**
- II. **Hydrographic Reports.**

SUPPLEMENTS.

- I. **Tracings**
- II. **Cumulative List of Australian Notices to Mariners.**
- III. **Cumulative List of Temporary and Preliminary Australian Notices to Mariners.**
- IV. **Temporary and Preliminary Notices in force.**

© Commonwealth of Australia 2020

This work is copyright. Apart from any use permitted under the Copyright Act 1968, no part may be reproduced by any process, adapted, communicated or commercially exploited without prior written permission from The Commonwealth represented by the Australian Hydrographic Office.

IMPORTANT NOTICE

This edition of Notices to Mariners includes all significant information affecting AHO products which the AHO has become aware of since the last edition. All reasonable efforts have been made to ensure the accuracy and completeness of the information, including third party information, on which these updates are based. The AHO regards third parties from which it receives information as reliable, however the AHO cannot verify all such information and errors may therefore exist. The AHO does not accept liability for errors in third party information.

GENERAL INSTRUCTIONS

The substance of these notices should be inserted on the charts affected.

Bearings are referred to the true compass and are reckoned clockwise from North; those relating to lights are given as seen by an observer from seaward.

Positions quoted in notices relate to WGS84 which is the horizontal datum for all charts produced by the Australian Hydrographic Office.

The range quoted for a light is its nominal range.

Depths are with reference to the chart datum of each chart. Heights are above mean high water springs or mean higher high water, as appropriate.

The capital letter (P) or (T) after the number of any notice denotes a preliminary or temporary notice respectively, which are contained separately at the end of the permanent notices.

REPORTING OF DANGERS

Mariners are particularly requested to notify the AUSTRALIAN HYDROGRAPHIC OFFICE, Locked Bag 8801 Wollongong, NSW 2500 (Fax 02-4223 6599, e-mail datacentre@hydro.gov.au or, alternatively by filling in and submitting the [Hydrographic Notes](#) forms located on the web site – www.hydro.gov.au), immediately on the discovery of new dangers or suspected dangers to navigation. For changes or defects in aids to navigation notify AusSAR (Fax 02-6230 6868 or email rccaus@amsa.gov.au).

AUTHORISED USE

Copies of Australian notices are available free of charge from the Australian Hydrographic Office (AHO) website (www.hydro.gov.au) and through the eNotices (email) service (www.hydro.gov.au/enotices/enotices.htm).

Individual Notices may be copied for the purpose of inserting Notice substance on official charts and publications. Paper copies may be printed by chart agents and distributed to customers on a cost recovery basis. Participating chart agents are listed on the AHO website as providing a 'Paper Notices to Mariners' service (www.hydro.gov.au/webapps/jsp/agents/agents-list.jsp). Copies of the notices may not be sold for profit without prior written agreement.

NUMERICAL INDEX OF NOTICES TO MARINERS

Edition No 23

Notices	Aus Chart, INT Chart, ENC Cell, AHP, BA Pubs
938	Aus 53, 54, 392, 662, PNG 392, 662
939	Aus 280, 281
940	Amendment to Australian National Tide Tables 2020/2021
941	Amendment to Mariner's Handbook for Australian Waters AHP20
942	Aus 236
943	Aus 247, 265
944	Aus 250
945	Aus 4, 301
946	PNG 653
947	Aus 391, 393, 4622, INT 622
948	Aus 841
949	Aus 4070, 4071, 4708, 4723, INT 70, 71, 708, 723
950	Aus 50, 324
951	Aus 328, 4723, INT 723
952	Aus 143
953	Aus 153, 157
954	Aus 181
955	Aus 169
956	Aus 4634, INT 634
957(T)	Aus 255
958(T)	Aus 238
959(T)	Aus 238
960(T)	Aus 242
961(T)	Aus 268
962(T)	Aus 256, 827
963(T)	PNG 647, 648
964(T)	Aus 25, 29, 309, 316, 722
965(T)	Aus 309, 316, 722
966(T)	Aus 328
967(T)	Aus 327, 4722, 4723, INT 722, 723
968(T)	Aus 328, 329, 744, 745
969(T)	Aus 318, 4721, INT 721
970(T)	Aus 116
971(T)	Aus 320, 323, 732
972(T)	Aus 53, 54
973(T)	Aus 342, 485, 4727, INT 727
974(T)	Aus 357
975(T)	Aus 143
976(T)	Aus 143, 158
977(T)	Aus 181, 357, 802
978(T)	Aus 173, 795, 796

NUMERICAL INDEX OF CHARTS AFFECTED

Edition No 23

Aus Chart	Notices
Aus 4	945
Aus 25	964(T)
Aus 29	964(T)
Aus 50	950
Aus 53	938, 972(T)
Aus 54	938, 972(T)
Aus 116	970(T)
Aus 143	952, 975(T), 976(T)
Aus 153	953
Aus 157	953
Aus 158	976(T)
Aus 169	955
Aus 173	978(T)
Aus 181	954, 977(T)
Aus 236	942
Aus 238	958(T), 959(T)
Aus 242	960(T)
Aus 247	943
Aus 250	944
Aus 255	957(T)
Aus 256	962(T)
Aus 265	943
Aus 268	961(T)
Aus 280	939
Aus 281	939
Aus 301	945
Aus 309	964(T), 965(T)
Aus 316	964(T), 965(T)
Aus 318	969(T)
Aus 320	971(T)
Aus 323	971(T)
Aus 324	950
Aus 327	967(T)
Aus 328	951, 966(T), 968(T)
Aus 329	968(T)
Aus 342	973(T)
Aus 357	974(T), 977(T)
Aus 391	947
Aus 392	938
Aus 393	947
Aus 485	973(T)
Aus 662	938
Aus 722	964(T), 965(T)
Aus 732	971(T)
Aus 744	968(T)
Aus 745	968(T)
Aus 795	978(T)
Aus 796	978(T)
Aus 802	977(T)
Aus 827	962(T)
Aus 841	948
Aus 4070	949
Aus 4071	949
Aus 4622	947

Aus Chart	Notices
Aus 4634	956
Aus 4708	949
Aus 4721	969(T)
Aus 4722	967(T)
Aus 4723	949, 951, 967(T)
Aus 4727	973(T)
PNG 392	938
PNG 647	963(T)
PNG 648	963(T)
PNG 653	946
PNG 662	938

INT Chart	Notices
INT 70	949
INT 71	949
INT 622	947
INT 634	956
INT 708	949
INT 721	969(T)
INT 722	967(T)
INT 723	949, 951, 967(T)
INT 727	973(T)

938 AUSTRALIA - Products - New Charts, New Editions, Withdrawn Charts

Australian Hydrographic Office

New Charts

<i>Chart</i>	<i>Title</i>	<i>Scale</i>	<i>Publication Date</i>	<i>Remarks</i>
PNG 392	Papua New Guinea - New Ireland - New Hanover - North Cape to Nauna Island including Mussau Island 1° 15'·65 S – 3° 03'·10 S 148° 08'·60 E – 151° 11'·30 E	1:300 000	13 November 2020	Adoption of Papua New Guinea chart numbering. Replaces Aus 392. General updating throughout.
PNG 662	Papua New Guinea - Admiralty Islands - Seeadler Harbour 1° 54'·63 S – 2° 03'·50 S 147° 12'·73 E – 147° 26'·67 E Plans: Lorengau Bay 2° 00'·88 S – 2° 01'·85 S 147° 16'·06 E – 147° 16'·90 E Lombrum Bay 2° 02'·24 S – 2° 03'·25 S 147° 22'·02 E – 147° 23'·33 E	1:25 000 1:10 000 1:10 000	13 November 2020	Adoption of Papua New Guinea chart numbering. Replaces Aus 662. General updating throughout.

New Editions and Withdrawn Charts

<i>Chart</i>	<i>Title</i>	<i>Scale</i>	<i>Publication Date</i>	<i>Remarks</i>
Aus 53 (Edition 7)	Australia - North West Coast - Western Australia - Approaches to Port Hedland	1:50 000	13 November 2020	New edition with general updating throughout; including latest bathymetric data.. Chart Aus 53 Edition 6 dated 24 October 2014 is now superseded and must be withdrawn from use.
Aus 54 (Edition 3)	Australia - North West Coast - Western Australia - Port Hedland	1:7 500	13 November 2020	New edition with general updating throughout; including latest bathymetric data. Chart Aus 54 Edition 2 dated 29 November 2013 is now superseded and must be withdrawn from use.

New Electronic Navigation Chart (Aus ENC)

<i>Cell Name</i>	<i>Title</i>	<i>Publication Date</i>	<i>Remarks</i>
AU5ABY01	Australia - Victoria - Apollo Bay	5 November 2020	AU5141P6 has been withdrawn.
AU5SKI01	Australia - Victoria - Port Phillip - St Kilda	5 November 2020	AU5155P3 has been withdrawn.
AU5SAN01	Australia - Victoria - Port Phillip - Sandringham	5 November 2020	AU5155P4 has been withdrawn.
AU5M3N01	Australia - Victoria - Port Phillip - Mornington	5 November 2020	AU5143P3 has been withdrawn.
AU5BTV01	Australia - Victoria - Port Phillip - Brighton	5 November 2020	AU5155P2 has been withdrawn.
AU5BGE01	Australia - Victoria - Port Phillip - Blairgowrie	5 November 2020	AU5143P2 has been withdrawn.
AU5RIP01	Australia - Victoria - Port Phillip - The Rip	12 November 2020	AU5144P0 has been withdrawn.

New Electronic Navigation Chart (Aus ENC) (continued)

<i>Cell Name</i>	<i>Title</i>	<i>Publication Date</i>	<i>Remarks</i>
AU5AQCAS	Australian Antarctic Territory - Casey Station (Newcomb Bay)	12 November 2020	AU5601P1 has been withdrawn.
AU5ALT01	Australia - Victoria - Port Phillip - Altona	12 November 2020	AU5155P1 has been withdrawn.
AU5CPT01	Australia - Victoria - Western Port - Crib Point Oil Terminal	12 November 2020	AU5152P3 has been withdrawn.
AU5HIN01	Australia - Victoria - Western Port - Hanns Inlet	12 November 2020	AU5152P4 has been withdrawn.
AU5RIN01	Australia - Victoria - Western Port - Rutherford Inlet	12 November 2020	AU515P2 has been withdrawn.
AU5TNW01	Australia - Victoria - Western Port - The Narrows	12 November 2020	AU5150P2 has been withdrawn.
AU5HAS01	Australia - Victoria - Western Port - Hastings Bight	12 November 2020	AU5152P1 has been withdrawn.
AU5M3M01	Australia - Victoria - Port Phillip - Martha Cove Harbour	12 November 2020	AU5143P6 has been withdrawn.
AU5AQCBB	Australian Antarctic Territory - Commonwealth Bay - Boat Harbour	12 November 2020	AU5603P1 has been withdrawn.
AU5STA01	Australia - Tasmania - Stanley	12 November 2020	AU5178P3 has been withdrawn.
PG5662P1	Admiralty Islands - Lorengau Bay	5 November 2020	AU5662P1 has been withdrawn.
PG5671P1	Papua New Guinea - Palmalal Wharf	12 November 2020	AU5671P1 has been withdrawn.
PG5652P1	Papua New Guinea - North Coast - Aitape	12 November 2020	AU5652P1 has been withdrawn.
PG301142	South Pacific Ocean - Cell 5	12 November 2020	AU301142 has been withdrawn.

Charts withdrawn

<i>Chart</i>	<i>Remarks</i>
Aus 392	On publication of new chart PNG 392
Aus 662	On publication of new chart PNG 662

Chart permanently withdrawn

Charts listed above as withdrawn no longer meet chart carriage requirements and should be marked as "superseded" and replaced with the new chart/ new edition listed prior to passage through the area covered by the new chart.

When placing orders with a chart agent between notice of forthcoming edition and its publication, mariners should advise whether their order pertains to the current edition or the new edition.

For further details refer to the AHO website at www.hydro.gov.au for new edition and new chart stock arrival information.

939 AUSTRALIA - Products - New Charts and New Editions to be published shortly

Australian Hydrographic Office

New Charts to be published shortly

<i>Chart</i>	<i>Title</i>	<i>Scale</i>	<i>Remarks</i>
NIL			

New Editions to be published shortly

<i>Chart</i>	<i>Title</i>	<i>Scale</i>	<i>Remarks</i>
NIL			

Charts to be withdrawn without replacement 11 December 2020

<i>Chart</i>	<i>Title</i>	<i>Scale</i>	<i>Publication Date</i>
Aus 280 Edition 5	Australia - East Coast - Queensland - Plans in Queensland (Sheet 3) Plans: Maggie Reef to Eden Reef Flinders Group	1:75 000 1:50 000	22 February 2019
Aus 281 Edition 3	Australia - East Coast - Queensland - First Three Mile Opening to Cape Direction	1:75 000	22 February 2019

940 AUSTRALIA - Product - Amendment to Australian National Tide Tables 2020/2021
 Australian Hydrographic Office

ANTT 2020

Page 363

Amend BURNIE Correction to Chart Datum ENC AU442145 to AU5BWT01

Page 364

Amend DEVONPORT Correction to Chart Datum ENC AU5164P1 to AU5DPO01

Page 365

Amend ESPERANCE Correction to Chart Datum AUS 119 NE 30 OCT 2020 0.0

Page 366

Amend HOBART Correction to Chart Datum ENC AU5172P0 to AU5HBA01

Page 369

Amend RABAUL Correction to Chart Datum ENC AU5680P1 to PG5680P1

Page 371

Amend WEWAK Correction to Chart Datum ENC AU404143 to PG5651P1

ANTT 2021

Page 353

Amend BURNIE Correction to Chart Datum ENC AU442145 to AU5BWT01

Page 354

Amend DEVONPORT Correction to Chart Datum ENC AU5164P1 to AU5DPO01

ESPERANCE Correction to Chart Datum AUS 119 NE 30 OCT 2020 0.0

Page 356

Amend HOBART Correction to Chart Datum ENC AU5172P0 to AU5HBA01

Page 359

Amend RABAUL Correction to Chart Datum ENC AU5680P1 to PG5680P1

Page 361

940 AUSTRALIA - Product - Amendment to Australian National Tide Tables 2020/2021

Amend WEWAK Correction to Chart Datum ENC AU404143 to PG5651P1

941 AUSTRALIA - Product - Amendment to Mariner's Handbook for Australian Waters AHP20

Australian Hydrographic Office

Chapter 7 – page 120

Replace Page with accompanying page block

Chapter 7 – Section 7.5 - Australian Maritime Safety Authority's Differential Global Positioning System Service

Delete Section

Replace Section with accompanying block

Chapter 11 – Queensland Ports – page 222 – Brisbane - For more information

Delete www.portbris.com.au/ShippingOperations/PortHandbook

Replace www.portbris.com.au/Operations-and-Trade

Chapter 11 – Western Australian Ports – page 238 – Broome – Port Table

Replace Table with accompanying block

Chapter 11 – Oil and Gas Terminals – page 248 – Bayu Undan – Port Table

Replace Table with accompanying block

Chapter 12 – Section 12.1.2 – page 253 – Carriage Requirements – Table

Replace Table with accompanying block

942 AUSTRALIA - QUEENSLAND - Moreton Bay - Manly Boat Harbour - Nav aids

Maritime Safety Queensland Notice 302/2020

Aus 236 [649/2020]

<i>Delete</i>	light beacon	27° 26'.7 S	153° 12'.2 E
---------------	--------------	-------------	--------------

Aus 236 (Manly Boat Harbour) [649/2020]

<i>Insert</i>	accompanying block	27° 26'.5 S	153° 11'.8 E
---------------	--------------------	-------------	--------------

943 AUSTRALIA - QUEENSLAND - Port Alma - Sea Reach - Light buoys
Maritime Safety Queensland

Aus 247 [851/2020]

Replace	light buoy with port lateral pillar light buoy, <i>Fl.R.2s No2</i> , with topmark	23° 26'.1 S	150° 58'.9 E
	light buoy with port lateral pillar light buoy, <i>Fl.R.4s No4</i> , with topmark	23° 27'.6 S	150° 58'.3 E
	light buoy with port lateral pillar light buoy, <i>Fl.R.4s No6</i> , with topmark	23° 29'.6 S	150° 57'.6 E
	light buoy with starboard lateral pillar light buoy, <i>Fl.G.4s No1</i> , with topmark	23° 30'.1 S	150° 57'.0 E
	light buoy with port lateral pillar light buoy, <i>Fl.R.4s No8</i> , with topmark	23° 30'.9 S	150° 57'.1 E
	light buoy with starboard lateral pillar light buoy, <i>Fl.G.4s No3</i> , with topmark	23° 31'.0 S	150° 56'.6 E
	light buoy with port lateral pillar light buoy, <i>Fl.R.4s No10</i> , with topmark	23° 31'.6 S	150° 56'.6 E
	buoy with starboard lateral pillar light buoy, <i>Fl.G.2.5s No5</i> , with topmark	23° 31'.7 S	150° 56'.1 E
	light buoy with port lateral pillar light buoy, <i>Fl.R.2.5s No12</i> , with topmark	23° 32'.5 S	150° 55'.5 E

Aus 265 [851/2020]

Insert	port lateral pillar light buoy, <i>Fl.R.4s No4</i> , with topmark	23° 27'.571 S	150° 58'.348 E
	port lateral pillar light buoy, <i>Fl.R.4s No8</i> , with topmark	23° 30'.921 S	150° 57'.064 E
	starboard lateral pillar light buoy, <i>Fl.G.4s No3</i> , with topmark	23° 30'.980 S	150° 56'.644 E
Replace	light buoy with port lateral pillar light buoy, <i>Fl.R.2s No2</i> , with topmark	23° 26'.09 S	150° 58'.90 E
	light buoy with port lateral pillar light buoy, <i>Fl.R.4s No6</i> , with topmark	23° 29'.58 S	150° 57'.60 E
	light buoy with starboard lateral pillar light buoy, <i>Fl.G.4s No1</i> , with topmark	23° 30'.12 S	150° 57'.01 E
	light buoy with port lateral pillar light buoy, <i>Fl.R.4s No10</i> , with topmark	23° 31'.61 S	150° 56'.59 E
	light buoy with starboard lateral pillar light buoy, <i>Fl.G.2.5s No5</i> , with topmark	23° 31'.68 S	150° 56'.12 E
	light buoy with port lateral pillar light buoy, <i>Fl.R.2.5s No12</i> , with topmark	23° 32'.51 S	150° 55'.50 E
Delete	light buoy	23° 27'.65 S	150° 58'.34 E
	light buoy	23° 30'.88 S	150° 57'.07 E
	light buoy	23° 31'.02 S	150° 56'.62 E

944 AUSTRALIA - QUEENSLAND - Slade Island - Light buoy
Maritime Safety Queensland Notice 401/2020

Aus 250 (Mackay Harbour) [848/2020]

Move	light buoy	21° 05'.49 S	149° 14'.46 E
	to	21° 05'.607 S	149° 14'.773 E

945 AUSTRALIA - QUEENSLAND - Weipa - VTS
Maritime Safety Queensland

Aus 4 [648/2020]

Insert	magenta dashed line with legend, <i>Weipa VTS</i> , between	12° 57'.13 S	141° 36'.05 E
		12° 46'.29 S	141° 32'.50 E
		12° 33'.84 S	141° 35'.50 E
Delete	magenta dashed line with legend, <i>Weipa VTS</i> , between	12° 54'.5 S	141° 38'.2 E
		12° 46'.3 S	141° 33'.7 E
		12° 33'.8 S	141° 35'.5 E

Aus 301 [648/2020]

Insert	magenta dashed line with legend, <i>Weipa VTS</i> , between	12° 57'.13 S	141° 36'.05 E
		12° 46'.29 S	141° 32'.50 E
		12° 33'.84 S	141° 35'.50 E
Delete	magenta dashed line with legend, <i>Weipa VTS</i> , between	12° 54'.5 S	141° 38'.2 E
		12° 46'.3 S	141° 33'.7 E
		12° 33'.8 S	141° 35'.5 E

946 PAPUA NEW GUINEA - Dregerhafen - Light beacons

Australian Maritime Safety Authority

PNG 653 (Dregerhafen and Schneiderhafen) [1240/2019]

Insert	light beacon, <i>Fl(4)R. 16s 7m 3M</i> , with port lateral topmark	6° 38'.490 S	147° 51'.650 E
--------	--	--------------	----------------

Delete	light beacon	6° 38'.67 S	147° 51'.59 E
--------	--------------	-------------	---------------

947 PAPUA NEW GUINEA - North Cape to Seeadler Harbour - Chart name

Australian Hydrographic Office

Aus 391 [698/2020]

Amend	legend to <i>PNG 662</i>	1° 47'.0 S	148° 23'.0 E
	legend to <i>PNG 662</i>	1° 55'.0 S	147° 25'.5 E
	legend to <i>Adjoining Chart PNG 392</i> in E border	2° 30'.0 S	148° 31'.5 E

Aus 393 [275/2020]

Amend	legend to <i>Adjoining Chart PNG 392</i> in W border	2° 30'.0 S	150° 33'.9 E
-------	--	------------	--------------

Aus 4622 (INT 622) [800/2020]

Amend	legend to <i>PNG 392</i>	1° 18'.0 S	148° 15'.0 E
-------	--------------------------	------------	--------------

948 PAPUA NEW GUINEA - Saibai Island - Pipeline

Maritime Safety Queensland Notice 403/2020

Aus 841 [651/2020]

Insert	outfall pipeline, between	9° 22'.83 S	142° 36'.55 E
		9° 22'.62 S	142° 36'.61 E

949 INDONESIA - Java Ridge - Depths

Geoscience Australia

Aus 4070 (INT 70) [277/2020]

Insert	accompanying block	10° 30'.0 S	110° 00'.0 E
--------	--------------------	-------------	--------------

Aus 4071 (INT 71) [277/2020]

Insert	accompanying block	10° 30'.0 S	110° 00'.0 E
--------	--------------------	-------------	--------------

Aus 4708 (INT 708) [346/2020]

Insert	accompanying block	10° 31'.4 S	110° 20'.0 E
--------	--------------------	-------------	--------------

Aus 4723 (INT 723) [542/2020]

Insert	accompanying block	09° 37'.4 S	110° 18'.2 E
--------	--------------------	-------------	--------------

950 AUSTRALIA - WESTERN AUSTRALIA - Broome - Pilot boarding places

Australian Hydrographic Office

Aus 50 [701/2020]

Insert	pilot boarding place with magenta legend, <i>Northern (see Note)</i> , centred on	17° 51'.40 S	122° 10'.00 E
	pilot boarding place with magenta legend, <i>Western (see Note)</i> , centred on	17° 58'.04 S	122° 05'.04 E
Replace	PBP chart note with accompanying chart note	17° 51'.7 S	122° 19'.7 E
Delete	depth, 12 ₄ m	17° 51'.4 S	122° 10'.0 E
	pilot boarding place and legend, Outer (see Note)	17° 58'.0 S	122° 05'.4 E

Aus 324 [701/2020]

Insert	pilot boarding place with magenta legend, <i>Northern (see Note)</i> , centred on	17° 51'.40 S	122° 10'.00 E
Replace	PBP chart note with accompanying chart note	19° 08'.0 S	122° 14'.0 E
Amend	legend to <i>Western (see Note)</i>	17° 58'.0 S	122° 05'.0 E

951 AUSTRALIA - WESTERN AUSTRALIA - Montebello Islands - Well northwestwards

Chevron Australia

Aus 328 [655/2020]

Insert	depth, 124m, enclosed by danger circle with legend <i>Well</i> , centred on	20° 12'.86 S	115° 04'.01 E
--------	---	--------------	---------------

Aus 4723 (INT 723) [949/2020]

Insert	danger circle with legend <i>Well</i> , centred on	20° 12'.9 S	115° 04'.0 E
--------	--	-------------	--------------

952 AUSTRALIA - VICTORIA - Port Phillip - Patterson River - Light beacons

Parks Victoria Notice 299/2020

Aus 143 (Patterson River) [656/2020]

Amend	structure colour to <i>R</i>	38° 04'.45 S	145° 07'.06 E
	structure colour to <i>G</i>	38° 04'.48 S	145° 07'.07 E

953 AUSTRALIA - VICTORIA - Port Phillip - Geelong - Nav aids

Parks Victoria Notice 297/2020

Aus 153 [24/2020]

Insert	special cylindrical light buoy, <i>Fl. Y. 4s</i> , without topmark	38° 08'.590 S	144° 21'.971 E
	special cylindrical light buoy, <i>Fl. Y. 4s</i> , without topmark	38° 08'.620 S	144° 21'.950 E
Replace	light beacon with special cylindrical light buoy, <i>Fl. Y. 4s</i> , without topmark	38° 08'.55 S	144° 22'.00 E

Aus 157 [279/2020]

Replace	light beacon with special cylindrical light buoy, <i>Fl. Y. 4s</i> , without topmark	38° 08'.55 S	144° 22'.00 E
---------	--	--------------	---------------

954* AUSTRALIA - VICTORIA - Toora Channel - Beacons

Gippsland Ports

Aus 181 [861/2020]

Amend	beacon to <i>No27</i>	38° 41'.5 S	146° 20'.6 E
	beacon to <i>No19</i>	38° 42'.0 S	146° 20'.8 E
	beacon to <i>No17</i>	38° 42'.1 S	146° 21'.1 E
Delete	beacon	38° 42'.3 S	146° 21'.3 E

955 AUSTRALIA - TASMANIA - Georges Bay - Beacons

Maritime and Safety Tasmania Notice M186/2020

Aus 169 (Georges Bay) [380/2020]

Insert	starboard lateral beacon, <i>No5</i> , with topmark	41° 17'.855 S	148° 19'.072 E
	starboard lateral beacon, <i>No7B</i> , with topmark	41° 18'.150 S	148° 18'.654 E
Replace	buoy with port lateral beacon, <i>No8A</i> , with topmark	41° 18'.49 S	148° 17'.67 E
Delete	buoy	41° 17'.84 S	148° 19'.11 E
	buoy	41° 18'.17 S	148° 18'.58 E

956 SOLOMON ISLANDS - Rennell Island - Coastline

European Space Agency

Aus 4634 (INT 634) [144/2020]

Insert	accompanying block	11° 40'.0 S	160° 10'.0 E
--------	--------------------	-------------	--------------

957(T)/2020 AUSTRALIA - QUEENSLAND - Abbot Point - Scientific instrument

Maritime Safety Queensland Notice 392(T)/2020

A special spar light buoy, *Fl. Y. 2-5s*, exists in position 19° 52'.98 S 148° 04'.94 E.

Chart temporarily affected - Aus 255**958(T)/2020 AUSTRALIA - QUEENSLAND - Brisbane River - Bulimba Reach - Harbour works**

Maritime Safety Queensland Notice 409(T)/2020

Barge *Enviro II* is conducting works to remove the jetty (27° 27'.11 S 153° 02'.95 E).

The area is marked by special light buoys, *Fl. Y. 4s*.

Mariners are advised to navigate with caution in the area.

Chart temporarily affected - Aus 238**959(T)/2020 AUSTRALIA - QUEENSLAND - Brisbane River - South Brisbane Reach - Harbour works**

Former Notice - 808(T)/2020 is cancelled

Maritime Safety Queensland Notice 193(T)/2020, 337(T)/2020, 397(T)/2020

Works associated with the construction of the Queens Wharf Brisbane are in progress on the northern shoreline in the vicinity of position 27° 28'.43 S 153° 01'.41 E.

Starboard lateral light buoys, *Fl. G. 2-5s*, exist in positions 27° 28'.29 S 153° 01'.28 E and 27° 28'.66 S 153° 01'.53 E to mark safe water.

Flashing yellow lights will mark piles when left unattended during phases of construction.

All vessels will display appropriate lights and shapes; and will monitor VHF Ch 12, Ch 13 and Ch 16.

Construction of bridge pylons are in progress in positions 27° 28'.50 S 153° 01'.29 E, 27° 28'.48 S 153° 01'.35 E and 27° 28'.47 S 153° 01'.45 E.

The barge *Darwin* and support vessels are on site. The barge will deploy anchors marked by yellow lights.

The construction zone is marked by special light buoys and only authorised vessels are permitted to enter.

Mariners are advised to navigate with caution in the area.

Chart temporarily affected - Aus 238**960(T)/2020 AUSTRALIA - QUEENSLAND - Bundaberg - Burnett River - Scientific instrument recovered**

Former Notice - 383(T)/2020 is cancelled

Maritime Safety Queensland

Cancel this notice on receipt.

Chart formerly affected - Aus 242**961(T)/2020 AUSTRALIA - QUEENSLAND - Gloucester Passage - Light buoy relit**

Former Notice - 709(T)/2020 is cancelled

Maritime Safety Queensland

Cancel this notice on receipt.

Chart formerly affected - Aus 268

962(T)/2020 AUSTRALIA - QUEENSLAND - Rattlesnake Island - Live firing*Former Notice* - 924(T)/2020 is cancelled

Maritime Safety Queensland Notice 386(T)/2020, 413(T)/2020

Live firing activities will be conducted within a 5M radius of position 19° 02'.27 S 146° 36'.43 E on 18 November 2020 and during the period 23 November to 27 November 2020.

Mariners are advised to navigate with caution and keep well clear of the area.

Chart temporarily affected - Aus 256 - Aus 827

963(T)/2020 PAPUA NEW GUINEA - Caution Bay - Light beacon damaged

National Maritime Safety Authority PNG Notice 39/2020

The light beacon, *Fl.Bu.2s 8M RL2* (9° 17'.98 S 146° 58'.19 E), is damaged and unlit.

Chart temporarily affected - PNG 647 - PNG 648

964(T)/2020 AUSTRALIA - NORTHERN TERRITORY - Beagle Gulf - Scientific instruments recovered*Former Notice* - 492(T)/2020 is cancelled

Precision Hydrographic Services

Cancel this notice on receipt.

Chart formerly affected - Aus 25 - Aus 29 - Aus 309 - Aus 316 - Aus 722

965(T)/2020 AUSTRALIA - NORTHERN TERRITORY - Beagle Gulf - Scientific instruments

Precision Hydrographic Services

Special spar light buoys, *Fl.Y.1-5s*, exist in positions 12° 13'.9 S 130° 34'.2 E and 12° 13'.4 S 130° 33'.8 E.

Chart temporarily affected - Aus 309 - Aus 316 - Aus 722

966(T)/2020 AUSTRALIA - WESTERN AUSTRALIA - Barrow Island - Subsea operations northwestwards

Monson Offshore

On or about 23 November 2020 vessel *Maersk Master* will be conducting subsea operations between the following positions:
19° 51'.56 S 114° 29'.56 E and 19° 51'.19 S 114° 30'.98 E
and
20° 34'.40 S 114° 45'.72 E and 20° 34'.60 S 114° 46'.71 E.

Mariners are advised to navigate with caution in the area.

Chart temporarily affected - Aus 328

967(T)/2020 AUSTRALIA - WESTERN AUSTRALIA - Dampier Archipelago - Drill rig northwards*Former Notice* - 929(T)/2020 is cancelled

MODU Development Driller 1

Cancel this notice on receipt.

Chart formerly affected - Aus 327 - Aus 4722 (INT 722) - Aus 4723 (INT 723)

968(T)/2020 AUSTRALIA - WESTERN AUSTRALIA - Exmouth Reef to Ningaloo Reef - Scientific instruments

Department of Transport WA

Special light buoys, *Fl.Y.2-5s*, exist in positions 21° 50'.14 S 114° 16'.78 E and 21° 53'.73 S 113° 55'.59 E.

Chart temporarily affected - Aus 328 - Aus 329 - Aus 744 - Aus 745

969(T)/2020 AUSTRALIA - WESTERN AUSTRALIA - Joseph Bonaparte Gulf - Subsea operations
Santos

On or about 23 November 2020, vessel *Bhahwan K* will be conducting subsea operations in an area bounded by the following positions:

13° 19'.92 S 128° 00'.07 E
13° 19'.92 S 128° 10'.07 E
13° 09'.92 S 128° 10'.07 E
13° 09'.92 S 128° 00'.07 E.

Mariners are advised to navigate with caution in the area.

Chart temporarily affected - Aus 318 - Aus 4721 (INT 721)

970(T)/2020 AUSTRALIA - WESTERN AUSTRALIA - Mandurah - Harbour works
Department of Transport WA

Works associated with the construction of the Mandurah Estuary pool seawalls are in progress on the foreshore in the vicinity of position 32° 31'.98 S 115° 43'.09 E.

The works area is marked by a silt curtain and special light buoys.

Mariners are advised to keep well clear and to navigate with caution in the area.

Chart temporarily affected - Aus 116

971(T)/2020 AUSTRALIA - WESTERN AUSTRALIA - Mavis Reef - Scientific instruments eastwards

Former Notice - 930(T)/2020 is cancelled

MMA Offshore, Exodus Hydrographic Surveys

Scientific instruments, marked by spherical orange buoys, exist in the following positions:

15° 18'.43 S 123° 56'.37 E
15° 34'.72 S 123° 28'.53 E
15° 35'.35 S 123° 28'.80 E
15° 40'.73 S 123° 49'.22 E
15° 43'.65 S 123° 28'.87 E.

Mariners are advised to navigate with caution in the area. 1M clearance requested.

Chart temporarily affected - Aus 320 - Aus 323 - Aus 732

972(T)/2020 AUSTRALIA - WESTERN AUSTRALIA - Port Hedland - Scientific instruments

Pilbara Ports Authority Notice 15(T)/2020

Scientific instruments exist in the following positions:

20° 18'.27 S 118° 31'.00 E
20° 17'.79 S 118° 35'.44 E
20° 17'.69 S 118° 34'.67 E.

Mariners are advised to navigate with caution in the area.

Chart temporarily affected - Aus 53 - Aus 54

973(T)/2020 AUSTRALIA - SOUTH AUSTRALIA - Coffin Bay Peninsula - Point Sir Isaac - Light relit

Former Notice - 883(T)/2020 is cancelled

Department for Infrastructure and Transport SA

Cancel this notice on receipt.

Chart formerly affected - Aus 342 - Aus 485 - Aus 4727 (INT 727)

974(T)/2020 AUSTRALIA - VICTORIA - Ninety Mile Beach - Drill rig southwards

Former Notice - 892(T)/2020 is cancelled
MODU Noble Tom Prosser

Cancel this notice on receipt.

Chart formerly affected - Aus 357

975(T)/2020 AUSTRALIA - VICTORIA - Port Phillip - Patterson River - Light beacon relit

Former Notice - 894(T)/2020 is cancelled
Parks Victoria Notice 299/2020

Cancel this notice on receipt.

Chart formerly affected - Aus 143

976(T)/2020 AUSTRALIA - VICTORIA - Port Phillip - South Channel - Light beacon restored

Former Notice - 181(T)/2020 is cancelled
Victorian Ports Corporation (Melbourne) Notice 306/2020

Cancel this notice on receipt.

Chart formerly affected - Aus 143 - Aus 158

977(T)/2020 AUSTRALIA - VICTORIA - Seal Islands - Scientific instruments northeastwards

Star of the South

Scientific instruments, 10m below the surface, exist in the following positions:

38° 32'.89 S 147° 14'.35 E
 38° 37'.81 S 147° 06'.29 E
 38° 38'.05 S 147° 01'.28 E
 38° 38'.13 S 147° 13'.39 E
 38° 41'.19 S 146° 56'.06 E
 38° 42'.53 S 147° 00'.32 E
 38° 44'.00 S 147° 05'.23 E
 38° 44'.40 S 146° 48'.76 E
 38° 44'.56 S 147° 08'.19 E
 38° 46'.03 S 146° 54'.52 E
 38° 47'.43 S 146° 59'.98 E
 38° 49'.31 S 146° 43'.92 E
 38° 50'.00 S 147° 02'.59 E
 38° 51'.18 S 146° 51'.14 E
 38° 53'.29 S 146° 45'.29 E
 38° 53'.28 S 146° 57'.16 E
 38° 54'.83 S 146° 33'.04 E
 38° 54'.86 S 146° 38'.98 E
 38° 55'.42 S 146° 51'.64 E
 38° 56'.08 S 146° 44'.87 E.

Chart temporarily affected - Aus 181 - Aus 357 - Aus 802

978(T)/2020 AUSTRALIA - TASMANIA - Bruny Island - Cape Connella - Light buoy recovered

Former Notice - 732(T)/2020 is cancelled
Marine and Safety Tasmania Notice M199/2020

Cancel this notice on receipt.

Chart formerly affected - Aus 173 - Aus 795 - Aus 796

II

HYDROGRAPHIC REPORTS

NIL

To accompany Australian Notice to Mariners 950/2020

PILOT BOARDING PLACES

The Northern Pilot Boarding Place is compulsory for all vessels with draft greater than 7.5 metres. The Western pilot boarding ground is for any vessel with draft less than 7.5m. The Inner Pilot Boarding Place will be employed as agreed between individual ship masters and the Kimberley Ports Authority for vessels less than 80m LOA and draft less than 7.5m.

Note for chart Aus 50

To accompany Australian Notice to Mariners 950/2020

PILOT BOARDING PLACES

The Northern Pilot Boarding Place is compulsory for all vessels with draft greater than 7.5 metres. The Western pilot boarding ground is for any vessel with draft less than 7.5m. The Inner Pilot Boarding Place will be employed as agreed between individual ship masters and the Kimberley Ports Authority for vessels less than 80m LOA and draft less than 7.5m.

Note for chart Aus 324

7.11 GREAT BARRIER REEF AND TORRES STRAIT SHIP REPORTING SYSTEM

1. The Torres Strait and GBR are subject to the compulsory REEFVTS Ship Reporting System (see Section 9.3).

7.12 TORRES STRAIT TIDE GAUGES AND CURRENT METERS

1. AMSA has a network of five tide gauges and one tidal stream gauge in Torres Strait. The gauges provide real-time, accurate tidal data to the mariner via VHF Marine Channel 68 (156.425MHz).
2. Mariners are strongly advised to make use of this service as actual tides and streams may differ considerably from those predicted due to meteorological effects and Mean Sea Level (MSL) fluctuations (see Section 4.11.3).
3. All broadcasts are made from the Hammond Island radio transmitter and radar tower on Hammond Hill (152m, located 0.5 miles SSE of Turtle Head Lighthouse). The nominal range is 24 miles. Where line of sight to Hammond Hill is obscured reception may be lost.
4. The five transmitting tide gauges and one transmitting current meter are at the following locations:

Name	Station Identifier	Position (World Geodetics System (WGS 84))	Hours of Operation
Booby Island (tidal height)	Booby Island tide	10° 36' 09" S 141° 54' 36" E	H 24
Goods Island (tidal height)	Goods Island tide	10° 33' 53" S 142° 08' 44" E	H 24
Turtle Head (tidal height) (Hammond Island)	Turtle Head tide	10° 31' 14" S 142° 12' 47" E	H 24
Nardana Patches (tidal height) Nardana Patches (tidal stream)	Nardana tide Nardana stream	10° 30' 17" S 142° 14' 38" E	H 24
Ince Point (Wednesday Island)	Ince Point tide	10° 30' 51" S 142° 18' 17" E	H 24

5. The tidal data is broadcast in the sequence listed in the table above.
6. For each tide station, the broadcast includes:
 - the station identifier, and
 - the height of tide to two decimal place.
7. For the Nardana tidal stream station, the broadcast includes:
 - the station identifier, and
 - the direction and velocity of the tidal stream to one decimal place.
8. Following the Ince Point tidal data transmission, there is a three-second interval of no radio transmission.
9. The broadcast is repeated on a loop, recommencing with Booby Island, then all others in the same sequence. Tidal data is updated every two minutes.
10. If no data is available from a tidal station, the message 'no data available' will be broadcast after the respective station identifier.
11. For more information refer to the Australian National Tide Tables (ANTT) (AHP11).

With reference to Australian Maritime Safety Authority (AMSA) Marine notice 03/2020 and in accordance with Australian Hydrographic Office (AHO) NtM 941/2020 Section 7.5 - Australian Maritime Safety Authority's Differential Global Positioning System Service has been deleted. The service was shutdown on 1 July 2020.

Section 7.5

Broome, WA (18° 00'S, 122° 13'E)	
UN/LOCODE: AU BME	
Paper charts:	Aus 50, 324
AusENC cells:	AU5050P0, AU418122, AU419122
Security Regulated Port:	Yes MSIC & Port Access Card required
Port Authority:	Kimberley Port Authority
Website:	www.kimberleyports.wa.gov.au
Email:	info@kimberleyports.wa.gov.au
Telephone:	+61 8 9194 3100
Pilot / Operations	
Telephone:	+61 8 9194 3100 +61 417 173 679
Email:	operations@kimberleyports.wa.gov.au
Pilotage:	Compulsory ≥ 35m LOA
Pilot Boarding Grounds:	Northern 17° 51.4'S, 122° 10.0'E > 7.5m Draft Western 17° 58.04'S, 122° 05.04'E < 7.5m Draft Inner 17° 59.25'S, 122° 09.9'E
Communication:	"Port of Broome"
Call up, emergencies:	VHF Channel 16 & 14
Port / Pilots / Tugs:	VHF Channel 14 / 12 & 06
Notice of ETA:	7 days
For more information:	www.kimberleyports.wa.gov.au

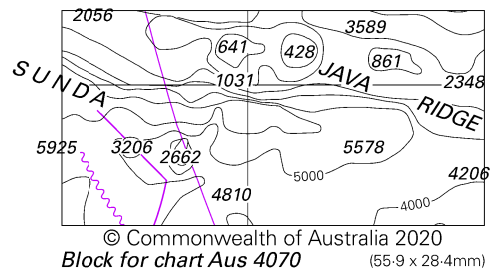
238

Bayu Undan (Liberdade)	
Timor Sea (11° 02' 58S, 126 °37 6'E)	
Paper chart:	Aus 312
AusENC cells:	AU311126, AU312126, AU220120
Security Regulated Offshore Facility:	Yes
Operator:	Santos Limited
Website:	www.santos.com.au
Telephone:	+61 8 6363 2115
FPSO:	Liberdade
Call:	VKD935
Telephone:	+61 8 6363 1001
Email:	bufsooim@santos.com
Pilot Boarding Ground:	Pilot will embark 2 miles NW of the FPSO
Pilotage:	Compulsory
Communication	
Call up, emergencies:	VHF Channel 16
Pilots / Operator:	VHF Channel 15
Notice of ETA:	72 hours with confirmation at 48, 24 and 12 hours before arrival

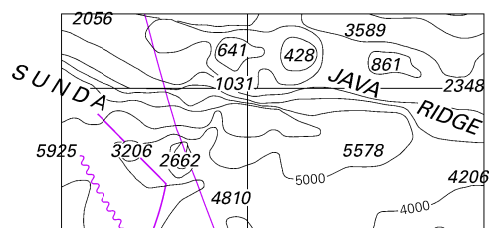
248

Carriage Requirements - NSCV Part C, Section 7C						
Operational Area and vessel length (Note 1)	All areas vessels 35 metres and over	Area A vessels 24 metres and over	Area A vessels under 24 metres	Area B vessels under 35 metres	Area C vessels under 35 metres	Areas D and E vessels under 35 metres
Electronic Chart Display and Information System (ECDIS) or Electronic Chart System (ECS) (using official ENC) or Paper Nautical Chart (PNC) (Note 2, 3)	Comply with AMSA Marine Orders Part 27	Comply with AMSA Marine Orders Part 27	ECDIS or ECS or PNC required in accordance with (iaw) NSCV	ECDIS or ECS or PNC required iaw NSCV	ECDIS or ECS or PNC required iaw NSCV	ECDIS or ECS or PNC required for vessels 12 metres and over (Note 3)
Nautical Publications (NP)	Comply with AMSA Marine Orders Part 27	Comply with AMSA Marine Orders Part 27	NPs required iaw NSCV	NPs required iaw NSCV	NPs required iaw NSCV	NPs required iaw NSCV

To accompany Australian Notice to Mariners 949/2020

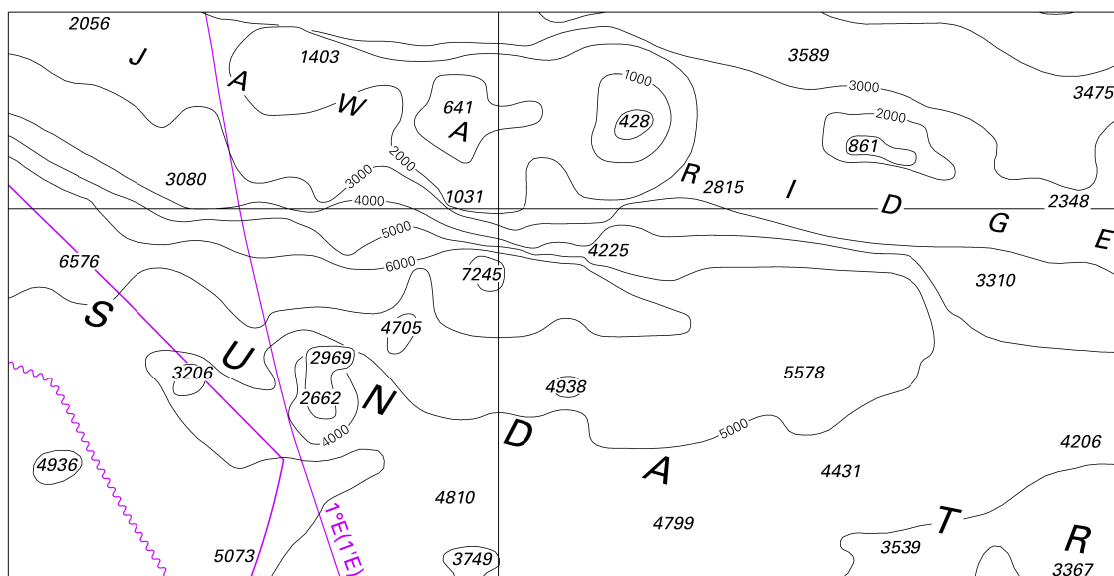


To accompany Australian Notice to Mariners 949/2020



© Commonwealth of Australia 2020
Block for chart Aus 4071 (55.9 x 28.4mm)

To accompany Australian Notice to Mariners 949/2020

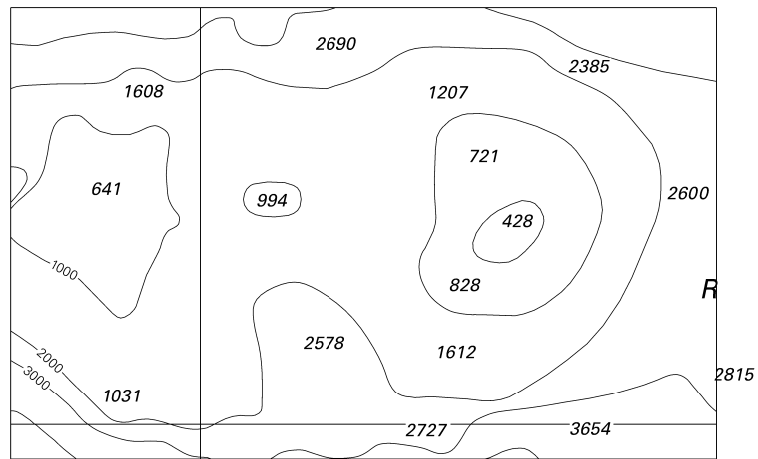


Block for chart Aus 4708

© Commonwealth of Australia 2020

(147.3 x 74.9mm)

To accompany Australian Notice to Mariners 949/2020

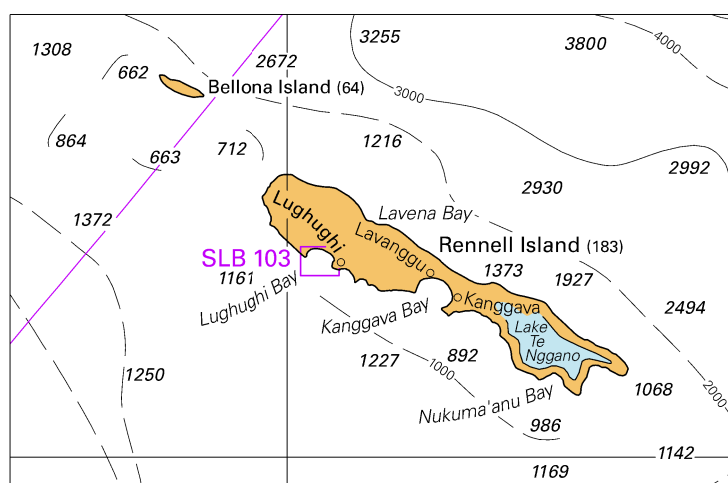


© Commonwealth of Australia 2020

Block for chart Aus 4723

(93.4 x 59.7mm)

To accompany Australian Notice to Mariners 956/2020



© Commonwealth of Australia 2020

Block for chart Aus 4634

(96.1 x 62.2mm)