



16 October 2020

Edition 21

# AUSTRALIAN NOTICES TO MARINERS

**Notices 842 - 896**

Published fortnightly by the Australian Hydrographic Office



Australian Notices to Mariners are the authority for correcting charts and publications published by the Australian Hydrographic Office covering Australia, Papua New Guinea, Solomon Islands, Australian Antarctic Territory and Timor-Leste.

Commodore F.T. FREEMAN RAN  
*Hydrographer of Australia*

---

## SECTIONS.

- I. **Australian Notices to Mariners, including blocks and notes.**
- II. **Hydrographic Reports.**

## SUPPLEMENTS.

- I. **Tracings**
- II. **Cumulative List of Australian Notices to Mariners.**
- III. **Cumulative List of Temporary and Preliminary Australian Notices to Mariners.**
- IV. **Temporary and Preliminary Notices in force.**

---

© Commonwealth of Australia 2020

This work is copyright. Apart from any use permitted under the Copyright Act 1968, no part may be reproduced by any process, adapted, communicated or commercially exploited without prior written permission from The Commonwealth represented by the Australian Hydrographic Office.

## IMPORTANT NOTICE

This edition of Notices to Mariners includes all significant information affecting AHO products which the AHO has become aware of since the last edition. All reasonable efforts have been made to ensure the accuracy and completeness of the information, including third party information, on which these updates are based. The AHO regards third parties from which it receives information as reliable, however the AHO cannot verify all such information and errors may therefore exist. The AHO does not accept liability for errors in third party information.

---

## GENERAL INSTRUCTIONS

The substance of these notices should be inserted on the charts affected.

Bearings are referred to the true compass and are reckoned clockwise from North; those relating to lights are given as seen by an observer from seaward.

Positions quoted in notices relate to WGS84 which is the horizontal datum for all charts produced by the Australian Hydrographic Office.

The range quoted for a light is its nominal range.

Depths are with reference to the chart datum of each chart. Heights are above mean high water springs or mean higher high water, as appropriate.

The capital letter (P) or (T) after the number of any notice denotes a preliminary or temporary notice respectively, which are contained separately at the end of the permanent notices.

---

## REPORTING OF DANGERS

Mariners are particularly requested to notify the AUSTRALIAN HYDROGRAPHIC OFFICE, Locked Bag 8801 Wollongong, NSW 2500 (Fax 02-4223 6599, e-mail [datacentre@hydro.gov.au](mailto:datacentre@hydro.gov.au) or, alternatively by filling in and submitting the [Hydrographic Notes](#) forms located on the web site – [www.hydro.gov.au](http://www.hydro.gov.au)), immediately on the discovery of new dangers or suspected dangers to navigation. For changes or defects in aids to navigation notify AusSAR (Fax 02-6230 6868 or email [rccaus@amsa.gov.au](mailto:rccaus@amsa.gov.au)).

---

## AUTHORISED USE

Copies of Australian notices are available free of charge from the Australian Hydrographic Office (AHO) website ([www.hydro.gov.au](http://www.hydro.gov.au)) and through the eNotices (email) service ([www.hydro.gov.au/enotices/enotices.htm](http://www.hydro.gov.au/enotices/enotices.htm)).

Individual Notices may be copied for the purpose of inserting Notice substance on official charts and publications. Paper copies may be printed by chart agents and distributed to customers on a cost recovery basis. Participating chart agents are listed on the AHO website as providing a 'Paper Notices to Mariners' service ([www.hydro.gov.au/webapps/jsp/agents/agents-list.jsp](http://www.hydro.gov.au/webapps/jsp/agents/agents-list.jsp)). Copies of the notices may not be sold for profit without prior written agreement.

## NUMERICAL INDEX OF NOTICES TO MARINERS

### Edition No 21

Notices	Aus Chart, INT Chart, ENC Cell, AHP, BA Pubs
842	Aus 125, 182, 286, 513, 514, PNG 513, 514
843	Aus 119, 280, 281, 502, 510
844	Amendment to Australian National Tide Tables 2020
845	Aus 200, 201
846	Aus 202
847	Aus 490, 818, 819
848	Aus 249, 250
849	Aus 240
850	Aus 6
851	Aus 247, 265, 819
852	Aus 377
853	PNG 520, 521
854	Aus 26, 27
855	Aus 24
856	Aus 37, 320, 729, 730
857	Aus 60
858	Aus 327, 742
859	Aus 126, 780, 781
860	Aus 120, 341, 342, 4727, INT 727
861	Aus 181, 357
862(T)	Aus 813, 814
863(T)	Aus 489, 807, 4643, INT 643
864(T)	Aus 251, 255, 821, 824, 825, 826
865(T)	Aus 245, 272
866(T)	Aus 249, 823
867(T)	Aus 252, 254
868(T)	Aus 249
869(T)	Aus 618
870(T)	PNG 508, 628
871(T)	PNG 547, 674
872(T)	Aus 4604, 4622, INT 604, 622, PNG 545, 554, 680
873(T)	Aus 26, 28
874(T)	Aus 24, 25, 26
875(T)	Aus 319, 320, 322, 4721, 4722, INT 721, 722
876(T)	Aus 319, 320, 322, 4721, 4722, INT 721, 722
877(T)	Aus 57, 59
878(T)	Aus 59
879(T)	Aus 112, 606, 607, 754, 4060, 4070, 4071, 4708, 4709, 4714, 4725, INT 60, 70, 71, 708, 709, 714, 725
880(T)	Aus 328, 4723, INT 723
881(T)	Aus 327, 4723, INT 723
882(T)	Aus 57, 327, 742
883(T)	Aus 342, 485, 4727, INT 727
884(T)	Aus 781
885(T)	Aus 125
886(T)	Aus 347, 780
887(T)	Aus 125, 347, 780
888(T)	Aus 348
889(T)	Aus 182
890(T)	Aus 182
891(T)	Aus 182
892(T)	Aus 357
893(T)	Aus 143, 158
894(T)	Aus 143
895(P)	Aus 181
896(T)	Aus 181, 182

# NUMERICAL INDEX OF CHARTS AFFECTED

## Edition No 21

Aus Chart	Notices
Aus 6	850
Aus 24	855, 874(T)
Aus 25	874(T)
Aus 26	854, 873(T), 874(T)
Aus 27	854
Aus 28	873(T)
Aus 37	856
Aus 57	877(T), 882(T)
Aus 59	877(T), 878(T)
Aus 60	857
Aus 112	879(T)
Aus 119	843
Aus 120	860
Aus 125	842, 885(T), 887(T)
Aus 126	859
Aus 143	893(T), 894(T)
Aus 158	893(T)
Aus 181	861, 895(P), 896(T)
Aus 182	842, 889(T), 890(T), 891(T), 896(T)
Aus 200	845
Aus 201	845
Aus 202	846
Aus 240	849
Aus 245	865(T)
Aus 247	851
Aus 249	848, 866(T), 868(T)
Aus 250	848
Aus 251	864(T)
Aus 252	867(T)
Aus 254	867(T)
Aus 255	864(T)
Aus 265	851
Aus 272	865(T)
Aus 280	843
Aus 281	843
Aus 286	842
Aus 319	875(T), 876(T)
Aus 320	856, 875(T), 876(T)
Aus 322	875(T), 876(T)
Aus 327	858, 881(T), 882(T)
Aus 328	880(T)
Aus 341	860
Aus 342	860, 883(T)
Aus 347	886(T), 887(T)
Aus 348	888(T)
Aus 357	861, 892(T)
Aus 377	852
Aus 485	883(T)
Aus 489	863(T)
Aus 490	847
Aus 502	843
Aus 510	843
Aus 513	842
Aus 514	842

Aus Chart	Notices
Aus 606	879(T)
Aus 607	879(T)
Aus 618	869(T)
Aus 729	856
Aus 730	856
Aus 742	858, 882(T)
Aus 754	879(T)
Aus 780	859, 886(T), 887(T)
Aus 781	859, 884(T)
Aus 807	863(T)
Aus 813	862(T)
Aus 814	862(T)
Aus 818	847
Aus 819	847, 851
Aus 821	864(T)
Aus 823	866(T)
Aus 824	864(T)
Aus 825	864(T)
Aus 826	864(T)
Aus 4060	879(T)
Aus 4070	879(T)
Aus 4071	879(T)
Aus 4604	872(T)
Aus 4622	872(T)
Aus 4643	863(T)
Aus 4708	879(T)
Aus 4709	879(T)
Aus 4714	879(T)
Aus 4721	875(T), 876(T)
Aus 4722	875(T), 876(T)
Aus 4723	880(T), 881(T)
Aus 4725	879(T)
Aus 4727	860, 883(T)
PNG 508	870(T)
PNG 513	842
PNG 514	842
PNG 520	853
PNG 521	853
PNG 545	872(T)
PNG 547	871(T)
PNG 554	872(T)
PNG 628	870(T)
PNG 674	871(T)
PNG 680	872(T)

INT Chart	Notices
INT 60	879(T)
INT 70	879(T)
INT 71	879(T)
INT 604	872(T)

INT Chart	Notices
INT 622	<a href="#">872(T)</a>
INT 643	<a href="#">863(T)</a>
INT 708	<a href="#">879(T)</a>
INT 709	<a href="#">879(T)</a>
INT 714	<a href="#">879(T)</a>
INT 721	<a href="#">875(T)</a> , <a href="#">876(T)</a>
INT 722	<a href="#">875(T)</a> , <a href="#">876(T)</a>
INT 723	<a href="#">880(T)</a> , <a href="#">881(T)</a>
INT 725	<a href="#">879(T)</a>
INT 727	<a href="#">860</a> , <a href="#">883(T)</a>

**842 AUSTRALIA - Products - New Charts, New Editions, Withdrawn Charts**  
UKHO , Australian Hydrographic Office

**New Charts**

<i>Chart</i>	<i>Title</i>	<i>Scale</i>	<i>Publication Date</i>	<i>Remarks</i>
PNG 513	Papua New Guinea - North East Coast - Bonvouloir Islands to Normanby Island including Egum Atoll 9° 23'·00 S – 10° 16'·00 S 151° 00'·50 E – 152° 24'·95 E	1:150 000	16 October 2020	Adoption of Papua New Guinea chart numbering. Replaces Aus 513. General updating throughout.
PNG 514	Papua New Guinea - North East Coast - Woodlark Island 8° 46'·94 S – 9° 40'·0 S 152° 18'·54 E – 153° 43'·0 E	1:150 000	16 October 2020	Adoption of Papua New Guinea chart numbering. Replaces Aus 514. General updating throughout.

**New Editions and Withdrawn Charts**

<i>Chart</i>	<i>Title</i>	<i>Scale</i>	<i>Publication Date</i>	<i>Remarks</i>
NIL				

**New Electronic Navigation Chart (Aus ENC)**

<i>Cell Name</i>	<i>Title</i>	<i>Publication Date</i>	<i>Remarks</i>
AU5OYB01	Australia – South Australia – Gulf St Vincent – Oyster Bay	8 October 2020	AU5125P7 has been withdrawn.
AU5CCW01	Australia – South Australia – Spencer Gulf – Franklin Harbor (Cowell)	8 October 2020	AU5777P2 has been withdrawn.
AU5PUG01	Australia – South Australia – Spencer Gulf – Port Augusta and approaches	8 October 2020	AU5132P0 has been withdrawn.
AU5PBY01	Australia – South Australia – Spencer Gulf – Port Bonython	8 October 2020	AU5135P2 has been withdrawn.
AU5SIO01	Australia – Tasmania - Smithton	8 October 2020	AU5178P5 has been withdrawn.
AU5ULV01	Australia – Tasmania - Ulverstone	8 October 2020	AU5164P2 has been withdrawn.
AU5SPB01	Australia – Tasmania – Spring Bay including Triabunna	8 October 2020	AU5175P0 has been withdrawn.
AU5LOY01	Australia – Tasmania – Little Oyster Cove	8 October 2020	AU5173P1 has been withdrawn.
AU5CSB01	Australia – Tasmania – Coles Bay	8 October 2020	AU5169P3 has been withdrawn.
AU5WAL01	Australia – South Australia – Spencer Gulf	8 October 2020	AU5133P1 has been withdrawn.
AU5SHP01	Australia – Tasmania – Southport	8 October 2020	AU5174P2 has been withdrawn.
AU5PAU01	Australia – Tasmania – Port Arthur	8 October 2020	AU5174P3 has been withdrawn.
AU5PDB01	Australia – Tasmania – Port Davey and Bathurst Channel	8 October 2020	AU5176P0 has been withdrawn.
AU5HEG01	Australia – Tasmania – Hells Gates	8 October 2020	AU5177P2 has been withdrawn.
AU5WNY01	Australia – Tasmania – Wynyard	8 October 2020	AU5178P6 has been withdrawn.

**842 AUSTRALIA - Products - New Charts, New Editions, Withdrawn Charts**
**New Electronic Navigation Chart (Aus ENC) (continued)**

<i>Cell Name</i>	<i>Title</i>	<i>Publication Date</i>	<i>Remarks</i>
AU5PLA01	Australia – Tasmania – Port Latta	15 October 2020	AU5178P2 has been withdrawn.
AU5PTJ01	Australia – Victoria - Portland	15 October 2020	AU5140P0 has been withdrawn.
AU5LDH01	Australia – Tasman Sea – Lord Howe Island	15 October 2020	AU5610P0 has been withdrawn.
AU5AQMAW	Australia Antarctic Territory - Mawson Station (Horseshoe Harbour)	15 October 2020	AU5600P1 has been withdrawn.
PG5683P1	Papua New Guinea – Bougainville – Anewa Bay	15 October 2020	AU5683P1 has been withdrawn.
PG5683P2	Papua New Guinea – Bougainville – Kieta Harbour	15 October 2020	AU5683P2 has been withdrawn.
PG5684P2	Papua New Guinea – Bougainville – Buka Passage	15 October 2020	AU5684P2 has been withdrawn.
PG5684P3	Papua New Guinea – Bougainville - Torokina	15 October 2020	AU5684P3 has been withdrawn.

**Charts withdrawn**

<i>Chart</i>	<i>Remarks</i>
Aus 513	On publication of new chart PNG 513
Aus 514	On publication of new chart PNG 514

**Charts withdrawn without replacement**

<i>Chart</i>	<i>Title</i>	<i>Scale</i>	<i>Publication Date</i>
Aus 125	Australia - South Coast - Plans in South Australia (Sheet 1)		9 March 2012
<b>Edition 1</b>	Plans:		
	Port Stanvac	1:25 000	
	Oyster Bay	1:20 000	
	Port Vincent	1:15 000	
	Glenelg	1:10 000	
	Wirrina Cove	1:10 000	
	Cape Jervis	1:5 000	
	Penneshaw	1:5 000	
Aus 182	Australia - South Coast - Plans in Victoria - South East Coast		19 April 2019
<b>Edition 3</b>	Plans:		
	Lewis Channel	1:25 000	
	Approaches to Port Albert	1:15 000	
	Barry Beach Marine Terminal	1:12 500	
	Lakes Entrance	1:10 000	
	Port Albert	1:7 500	
	Port Welshpool	1:7 500	
Aus 286	Australia - East Coast - Ashmore Reef	1:50 000	23 September 2011
<b>Edition 1</b>			

**Australian National Tide Tables 2021**

<i>AHP No</i>	<i>Title</i>	<i>Recommended retail price (incl GST)</i>	<i>Remarks</i>
AHP11	Australian National Tides Tables 2021	\$55.00	Paper Australian National Tides Tables 2021 for Australia, Antarctica, Papua New Guinea, Solomon Islands and Timor-Leste. Provides tidal information for 2021. Available from accredited chart

842

**AUSTRALIA - Products - New Charts, New Editions, Withdrawn Charts**

distribution agents.

**Admiralty publication**

<i>NP No</i>	<i>Title</i>	<i>Date</i>	<i>Remarks</i>
NP285	Admiralty List of Radio Signals Global Maritime Distress and Safety System (GMDSS) Volume 5 First Edition 2020	22/10/2020	The 2019/20 Edition of NP285 is cancelled.

**Chart permanently withdrawn**

Charts listed above as withdrawn no longer meet chart carriage requirements and should be marked as "superseded" and replaced with the new chart/ new edition listed prior to passage through the area covered by the new chart.

When placing orders with a chart agent between notice of forthcoming edition and its publication, mariners should advise whether their order pertains to the current edition or the new edition.

For further details refer to the AHO website at [www.hydro.gov.au](http://www.hydro.gov.au) for new edition and new chart stock arrival information.

843

**AUSTRALIA - Products - New Charts and New Editions to be published shortly**

UKHO , Australian Hydrographic Office

**New Charts to be published shortly**

<i>Chart</i>	<i>Title</i>	<i>Scale</i>	<i>Remarks</i>
PNG 502	Papua New Guinea - South Coast - Cape Blackwood to Kerema Bay	1:150 000	Adoption of Papua New Guinea chart numbering. Replaces Aus 502. General updating throughout.
PNG 510	Papua New Guinea - North East Coast - Long Reef to Sudest Island	1:150 000	Adoption of Papua New Guinea chart numbering. Replaces Aus 510. General updating throughout.

**New Editions to be published shortly**

<i>Chart</i>	<i>Title</i>	<i>Scale</i>	<i>Remarks</i>
Aus 119	Australia - South Coast - Western Australia - Approaches to Esperance Plans: Approaches to Goose Island Bay Duke of Orleans Bay Esperance Bandy Creek Boat Harbour	1:75 000  1:50 000 1:50 000 1:10 000 1:7 500	New edition with general updating throughout; including latest bathymetric data.

**Charts to be withdrawn without replacement 27 November 2020**

<i>Chart</i>	<i>Title</i>	<i>Scale</i>	<i>Publication Date</i>
Aus 280 <b>Edition 5</b>	Australia - East Coast - Queensland - Plans in Queensland (Sheet 3) Plans: Magpie Reef to Eden Reef Flinders Group	  1:75 000 1:50 000	22 February 2019
Aus 281 <b>Edition 3</b>	Australia - East Coast - Queensland - First Three Mile Opening to Cape Direction	1:75 000	22 February 2019



**844 AUSTRALIA - Product - Amendment to Australian National Tide Tables 2020**  
Australian Hydrographic Office

**ANTT 2020**

Page 339

*Amend* PORT MACQUARIE To Chart Datum 0.0 to -0.2

Page 362

*Amend* BARROW ISLAND - WAPET LANDING Correction to Chart Datum AUS 742 NE 18  
SEP 2020 0.0

Page 366

*Amend* LAE Correction to Chart Datum ENC AU5642P0 to PG5642P0

Page 367

*Amend* MADANG Correction to Chart Datum ENC AU5646P0 to PG5646P0

Page 368

*Amend* NEWCASTLE Correction to Chart Datum ENC AU5208P0 to AU5NTL01

Page 369

*Amend* PORT MORESBY Correction to Chart Datum ENC AU5621P0 to PG5621P0

PORT PIRIE Correction to Chart Datum ENC AU5136P1 to AU5PPI01

*Delete* PORT WALCOTT Correction to Chart Datum AUS 56 NE 09 AUG 2013 0.0

Page 371

*Amend* WHYALLA Correction to Chart Datum ENC AU5135P1 to AU5WHY01

**845 AUSTRALIA - NEW SOUTH WALES - Port Jackson - Middle Head - Masts**  
LT J Grimmett

**Aus 200 [589/2020]**

Insert	radio mast	33° 49'.618 S	151° 15'.918 E
	radio mast	33° 49'.625 S	151° 15'.985 E
Delete	radio mast and legend, (R Lt) (67)	33° 49'.57 S	151° 16'.01 E
	radio mast and legend, (R Lt) (59)	33° 49'.62 S	151° 15'.75 E
	radio mast and legend, (R Lt) (59)	33° 49'.73 S	151° 15'.73 E

**Aus 201 [589/2020]**

Insert	radio mast	33° 49'.618 S	151° 15'.918 E
	radio mast	33° 49'.625 S	151° 15'.985 E
Delete	radio mast and legend, (R Lt) (67)	33° 49'.57 S	151° 16'.01 E
	radio mast and legend, (R Lt) (59)	33° 49'.62 S	151° 15'.75 E
	radio mast and legend, (R Lt) (59)	33° 49'.73 S	151° 15'.73 E

**846 AUSTRALIA - NEW SOUTH WALES - Port Jackson - Goat Island - Lights**

Port Authority of New South Wales Notice 4/2020

**Aus 202 [797/2020]**

Amend	light to WRG.7m 5M (occas)	33° 51'.06 S	151° 11'.93 E
-------	----------------------------	--------------	---------------

Delete	dashed line, between	33° 51'.05 S	151° 11'.85 E
		33° 51'.06 S	151° 11'.93 E
	light	33° 51'.05 S	151° 11'.85 E

**847 AUSTRALIA - QUEENSLAND - Bunker Group - Lady Musgrave Island - Wreck westwards**

LADS Flight

**Aus 490 [473/2020]**

Replace	wreck depth, 30m, with wreck depth, 26 <sub>6</sub> m	23° 57'.3 S	152° 06'.9 E
---------	---	-------------	--------------

**Aus 818 [227/2020]**

Replace	wreck depth, 30m, with wreck depth, 26 <sub>6</sub> m	23° 57'.3 S	152° 06'.9 E
---------	---	-------------	--------------

**Aus 819 [692/2020]**

Replace	wreck depth, 30m, with wreck depth, 26 <sub>6</sub> m	23° 57'.3 S	152° 06'.9 E
---------	---	-------------	--------------

**848 AUSTRALIA - QUEENSLAND - Freshwater Point to Slade Point - Light buoys**

Maritime Safety Queensland Notice 359/2020, 360/2020

**Aus 249 [693/2020]**

Insert	special spar light buoy, Fl.Y.6s, without topmark	21° 10'.43 S	149° 15'.59 E
	special spar light buoy, Fl.Y.6s, without topmark	21° 19'.05 S	149° 18'.76 E
	special spar light buoy, Fl.Y.6s, without topmark	21° 24'.84 S	149° 20'.09 E

**Aus 250 (Mackay Harbour) [693/2020]**

Insert	special spar light buoy, Fl.Y.6s, without topmark	21° 05'.487 S	149° 14'.462 E
--------	---	---------------	----------------

**849 AUSTRALIA - QUEENSLAND - Great Sandy Strait - Dream Island - Light beacons; light buoys**

Maritime Safety Queensland Notice 358/2020

**Aus 240 [304/2020]**

Replace	light beacon with starboard lateral conical light buoy, Fl.G.6s, with topmark	25° 36'.5 S	152° 56'.9 E
	light beacon with west cardinal cylindrical light buoy, Q(9)15s, with topmark	25° 36'.8 S	152° 57'.1 E

**850 AUSTRALIA - QUEENSLAND - Karumba - Nav aids**

Maritime Safety Queensland Notice 327/2020

**Aus 6 [799/2020]**

Insert	accompanying block	17° 26'.5 S	140° 45'.0 E
--------	--------------------	-------------	--------------

**851 AUSTRALIA - QUEENSLAND - Port Alma - Wreck**

Maritime Safety Queensland

**Aus 247 [744/2020]**

Delete	depth, 9 <sub>6</sub> m, and enclosing danger circle with legend, Wk	23° 30'.9 S	150° 56'.9 E
--------	--	-------------	--------------

**Aus 265 [742/2020]**

Delete	depth, 9 <sub>6</sub> m, and enclosing danger circle with legend, Wk	23° 30'.93 S	150° 56'.90 E
--------	--	--------------	---------------

**Aus 819 [847/2020]**

Delete	depth, 9 <sub>6</sub> m, and enclosing danger circle with legend, Wk	23° 30'.9 S	150° 56'.9 E
--------	--	-------------	--------------

**852 AUSTRALIA - CORAL SEA - Pandora Passage to Ashmore Reef - Chart withdrawn; chart limits; chart note; ZOC diagram; depths**

Australian Hydrographic Office , LADS Flight

**Aus 377 [598/2020]**

Insert	chart note, ELECTRONIC NAVIGATIONAL CHART (ENC)	10° 14'.0 S	145° 55'.0 E
	magenta legend, <i>ENC</i> (see <i>Note</i> ), centred on	10° 16'.7 S	144° 28'.0 E
	accompanying ZOC diagram	10° 45'.0 S	145° 49'.0 E
	accompanying block	9° 47'.0 S	144° 47'.0 E

Delete	magenta limits with legend, Aus 286, centred on	10° 15'.0 S	144° 30'.0 E
--------	---	-------------	--------------

**853 PAPUA NEW GUINEA - Dyke Ackland Bay - Rocks northwards**

UKHO

**PNG 520 [NE 2/10/2020]**

Insert	underwater rock enclosed by danger circle, centred on	8° 29'.52 S	148° 38'.60 E
--------	---	-------------	---------------

Move	underwater rock enclosed by danger circle, centred on	8° 29'.6 S	148° 45'.1 E
	to	8° 29'.01 S	148° 45'.44 E

**PNG 521 [NC 2/10/2020]**

Delete	rock and enclosing danger circle	8° 29'.6 S	148° 45'.1 E
--------	----------------------------------	------------	--------------

**854 AUSTRALIA - NORTHERN TERRITORY - Darwin - Middle Arm - Mooring buoy**

National Port Services Organisation

**Aus 26 [478/2020]**

Insert	lit red barrel mooring buoy, <i>Fl. Y. 4s</i>	12° 34'.352 S	130° 52'.425 E
--------	---	---------------	----------------

**Aus 27 [15/2020]**

Insert	lit red barrel mooring buoy, <i>Fl. Y. 4s</i>	12° 34'.352 S	130° 52'.425 E
--------	---	---------------	----------------

**855 AUSTRALIA - NORTHERN TERRITORY - Darwin - Mooring buoy**

*Former Notice - 774(T)/2020 is cancelled*

Department of Infrastructure, Planning and Logistics NT Notice 54/2020

**Aus 24 [507/2020]**

Insert	lit yellow mooring buoy, <i>Iso. Y</i>	12° 27'.828 S	130° 49'.696 E
--------	--	---------------	----------------

**856 AUSTRALIA - WESTERN AUSTRALIA - Bigge Island - Depths**

HMAS *Benalla* and HMAS *Shepparton*

**Aus 37 [588/2019]**

Insert	accompanying ZOC diagram	14° 45'.5 S	125° 18'.0 E
	accompanying block	14° 47'.0 S	124° 59'.0 E

**Aus 320 [745/2020]**

Insert	accompanying block	14° 36'.0 S	125° 03'.0 E
--------	--------------------	-------------	--------------

**Aus 729 [588/2019]**

Insert	accompanying block	14° 36'.0 S	125° 02'.0 E
	accompanying ZOC diagram	14° 49'.0 S	124° 10'.0 E

**Aus 730 [700/2019]**

Insert	accompanying block	14° 45'.0 S	125° 03'.0 E
--------	--------------------	-------------	--------------

**857 AUSTRALIA - WESTERN AUSTRALIA - Dampier - Intercourse Island Departure Channel - Light beacon**

Pilbara Ports Authority Notice D19(T)/2020

**Aus 60 [941/2019]**

Amend	light beacon to <i>VQ.R 12E</i>	20° 38'.64 S	116° 40'.93 E
-------	---------------------------------	--------------	---------------

**858 AUSTRALIA - WESTERN AUSTRALIA - Dampier Archipelago - Mooring buoy; FPSO northwestwards**  
Jadestone Energy

**Aus 327 [61/2020]**

Insert	lit yellow and white mooring superbuoy, <i>Mo(U)Y.15s</i>	20° 16'.32 S	116° 16'.57 E
Delete	lit FPSO and legend, Dampier Spirit Q.R	20° 16'.3 S	116° 16'.6 E

**Aus 742 [NE 18/9/2020]**

Insert	lit yellow and white mooring superbuoy, <i>Mo(U)Y.15s</i>	20° 16'.32 S	116° 16'.57 E
Delete	lit FPSO and legend, Dampier Spirit Q.R	20° 16'.3 S	116° 16'.6 E

**859 AUSTRALIA - SOUTH AUSTRALIA - Oyster Bay to Penneshaw - Chart withdrawn; chart limits; chart note**

Australian Hydrographic Office

*Note:* position of existing chart notes may vary on certain charts.

**Aus 126 (Backstairs Passage) [22/2020]**

Insert	magenta legend, <i>ENC (see Note)</i> , centred on	35° 36'.2 S	138° 04'.0 E
	chart note, ELECTRONIC NAVIGATIONAL CHART (ENC)	35° 37'.0 S	138° 17'.5 E
	magenta legend, <i>ENC (see Note)</i> , centred on	35° 41'.9 S	137° 57'.7 E
Delete	magenta limits with legend, Aus 125, centred on	35° 36'.3 S	138° 05'.4 E
	magenta limits with legend, Aus 125, centred on	35° 43'.0 S	137° 56'.8 E

**Aus 780 [22/2020]**

Insert	magenta legend, <i>ENC (see Note)</i> , centred on	35° 29'.3 S	138° 13'.5 E
	chart note, ELECTRONIC NAVIGATIONAL CHART (ENC)	35° 50'.5 S	137° 19'.5 E
Delete	magenta limits with legend, Aus 125, centred on	35° 30'.0 S	138° 14'.0 E

**Aus 781 [749/2020]**

Insert	chart note, ELECTRONIC NAVIGATIONAL CHART (ENC)	34° 20'.3 S	138° 31'.5 E
	magenta legend, <i>ENC (see Note)</i> , centred on	34° 44'.4 S	137° 55'.0 E
	magenta legend, <i>ENC (see Note)</i> , centred on	34° 51'.4 S	137° 51'.5 E
	magenta legend, <i>ENC (see Note)</i> , centred on	34° 59'.3 S	138° 28'.6 E
	magenta legend, <i>ENC (see Note)</i> , centred on	35° 02'.5 S	138° 24'.3 E
Delete	magenta limits with legend, Aus 125, centred on	34° 45'.6 S	137° 53'.0 E
	magenta limits with legend, Aus 125, centred on	34° 53'.5 S	137° 49'.5 E
	magenta limits with legend, Aus 125, centred on	34° 58'.0 S	138° 29'.6 E
	magenta limits with legend, Aus 125, centred on	35° 05'.5 S	138° 27'.0 E

**860 AUSTRALIA - SOUTH AUSTRALIA - St Francis Island to Pearson Isles - Lights**

Australian Maritime Safety Authority Final ATH 36/2020, 38/2020

**Aus 120 [748/2020]**

Amend	light range to <i>15M</i>	32° 30'.6 S	133° 18'.3 E
-------	---------------------------	-------------	--------------

**Aus 341 [748/2020]**

Amend	light range to <i>15M</i>	32° 30'.6 S	133° 18'.3 E
-------	---------------------------	-------------	--------------

**Aus 342 [748/2020]**

Amend	light to <i>Fl(4)30s 79m 15M</i>	33° 57'.4 S	134° 15'.8 E
-------	----------------------------------	-------------	--------------

**Aus 4727 (INT 727) [22/2020]**

Amend	light range to <i>15M</i>	32° 30'.6 S	133° 18'.3 E
	light to <i>Fl(4)15M</i>	33° 57'.4 S	134° 15'.8 E

**861 AUSTRALIA - VICTORIA - Corner Inlet to Lakes Entrance - Chart withdrawn; chart limits; chart note;  
ZOC diagram**

Australian Hydrographic Office

*Note:* position of existing chart notes may vary on certain charts.

**Aus 181 [546/2020]**

Insert	accompanying ZOC diagram	38° 38'.0 S	146° 22'.3 E
	chart note, ELECTRONIC NAVIGATIONAL CHART (ENC)	38° 40'.0 S	146° 37'.0 E
	port lateral light beacon, <i>Fl.R. 4s</i> , with topmark	38° 40'.98 S	146° 41'.57 E
	starboard lateral light beacon, <i>Fl.G. 4s</i> , with topmark	38° 42'.36 S	146° 27'.55 E
	magenta legend, <i>ENC (see Note)</i> , centred on	38° 43'.0 S	146° 22'.4 E
	east cardinal pillar light buoy, <i>VQ(3)5s</i> , with topmark	38° 43'.33 S	146° 22'.56 E
	magenta legend, <i>ENC (see Note)</i> , centred on	38° 43'.7 S	146° 25'.8 E
	starboard lateral light beacon, <i>Fl.G. 4s</i> , with topmark	38° 44'.05 S	146° 25'.59 E
Delete	magenta legend, <i>ENC (see Note)</i> , centred on	38° 44'.6 S	146° 41'.3 E
	chart note, OMISSIONS FROM CHART	38° 39'.3 S	146° 35'.0 E
	magenta limits with legend, Aus 182, centred on	38° 42'.5 S	146° 41'.0 E
	magenta limits with legend, Aus 182, centred on	38° 43'.5 S	146° 22'.8 E
	magenta limits with legend, Aus 182, centred on	38° 43'.6 S	146° 27'.0 E

**Aus 357 [416/2020]**

Insert	magenta legend, <i>ENC (see Note)</i> , centred on	37° 54'.2 S	147° 57'.2 E
	chart note, ELECTRONIC NAVIGATIONAL CHART (ENC)	38° 27'.0 S	146° 52'.0 E
Delete	magenta limits with legend, Aus 182, centred on	37° 53'.5 S	147° 57'.8 E

**862(T)/2020 AUSTRALIA - NEW SOUTH WALES - Fingal Head - Artificial reef**  
NSW Department of Primary Industries

Works to establish an artificial reef are in progress in the vicinity of position 28° 13'.45 S 153° 35'.51 E.

A barge and support vessels are on site.

Mariners are advised to navigate with caution in the area.

**Chart temporarily affected - Aus 813 - Aus 814**

**863(T)/2020 AUSTRALIA - NEW SOUTH WALES - Jervis Bay - Live firing**  
Department of Defence 816 Squadron

During the period 20 to 21 October 2020, live firing will be conducted in an area bounded by the following positions:

36° 08'.8 S 150° 39'.9 E

35° 43'.2 S 151° 39'.5 E

35° 11'.9 S 150° 53'.0 E

35° 19'.7 S 150° 34'.6 E.

Mariners are advised to navigate with caution and keep well clear of the area.

**Chart temporarily affected - Aus 489 - Aus 807 - Aus 4643 (INT 643)**

**864(T)/2020 AUSTRALIA - QUEENSLAND - Abbot Point to Hydrographers Passage - Survey operations**  
*Former Notice - 807(T)/2020 is cancelled*  
iXblue Pty Ltd

On or about 15 October, RV *ESCAPE* will be conducting survey operations along the designated Two-Way Route between Abbot Point (19° 39'.48 S 148° 20'.04 E) and Hydrographers Passage (20° 49'.60 S 149° 47'.93 E) and the approaches to Abbot Point (19° 51'.63 S 148° 39'.54 E to 19° 48'.72 S 148° 09'.31 E).

The vessel will display appropriate lights and shapes and monitor VHF Ch 11, Ch 14 and Ch 16.

Subsurface scientific instruments marked by special light buoys, *Fl. Y. 3-2s*, exist in the following positions:

19° 43'.02 S 148° 21'.49 E

19° 48'.87 S 148° 52'.47 E

19° 52'.97 S 148° 04'.91 E

20° 09'.08 S 149° 16'.48 E

20° 25'.46 S 149° 30'.53 E

20° 45'.05 S 149° 37'.21 E

20° 48'.11 S 149° 49'.25 E.

Mariners are advised to navigate with caution in the area.

**Chart temporarily affected - Aus 251 - Aus 255 - Aus 821 - Aus 824 - Aus 825 - Aus 826**

**865(T)/2020 AUSTRALIA - QUEENSLAND - Gladstone - Curtis Island - Harbour works completed**  
*Former Notice - 763(T)/2020 is cancelled*  
Maritime Safety Queensland

Cancel this notice on receipt.

**Chart formerly affected - Aus 245 - Aus 272**

**866(T)/2020 AUSTRALIA - QUEENSLAND - Hay Point - Light beacon unlit**  
Maritime Safety Queensland Notice 357(T)/2020

The port lateral light beacon, *Fl. R. 4s* (21° 14'.93 S 149° 24'.78 E), is unlit.

**Chart temporarily affected - Aus 249 - Aus 823**

**867(T)/2020 AUSTRALIA - QUEENSLAND - Hayman Island - Lead lights relit**

*Former Notice* - 285(T)/2020 is cancelled  
Maritime Safety Queensland

Cancel this notice on receipt.

**Chart formerly affected - Aus 252 - Aus 254**

**868(T)/2020 AUSTRALIA - QUEENSLAND - Round Top Island - Scientific instrument eastwards**

Maritime Safety Queensland Notice 359/2020, 360/2020

A scientific instrument marked by special spar light buoy, *Fl. Y. 6s*, exists in position 21° 10'.30 S 149° 17'.78 E.

**Chart temporarily affected - Aus 249**

**869(T)/2020 AUSTRALIA - CORAL SEA - Elizabeth Reef - Unexploded ordnance removed**

*Former Notice* - 392(T)/2020 is cancelled  
Department of Agriculture, Water and the Environment

Cancel this notice on receipt.

**Chart formerly affected - Aus 618**

**870(T)/2020 PAPUA NEW GUINEA - Nuakata Passage - Light beacon unlit**

National Maritime Safety Authority PNG Coastal Navigation Warning 38/2020

The light beacon, *Fl(2)10s 7m 6M* (10° 23'.60 S 151° 00'.77 E), is unlit.

**Chart temporarily affected - PNG 508 - PNG 628**

**871(T)/2020 PAPUA NEW GUINEA - Stettin Bay - Grabo Reef - Light beacon relit**

*Former Notice* - 633(T)/2020 is cancelled  
National Maritime Safety Authority PNG Coastal Navigation Warning 37/2020

Cancel this notice on receipt.

**Chart formerly affected - PNG 547 - PNG 674**

**872(T)/2020 PAPUA NEW GUINEA - Tavui Point - Light relit**

*Former Notice* - 716(T)/2020 is cancelled  
National Maritime Safety Authority PNG Coastal Navigation Warning 36/2020

Cancel this notice on receipt.

**Chart formerly affected - Aus 4604 (INT 604) - Aus 4622 (INT 622) - PNG 545 - PNG 554 - PNG 680**

**873(T)/2020 AUSTRALIA - NORTHERN TERRITORY - Darwin - South Shell Island - Scientific instrument**

Department of Infrastructure, Planning and Logistics NT Notice 57(T)/2020

A subsurface scientific instrument exists in position 12° 29'.85 S 130° 53'.16 E.

**Chart temporarily affected - Aus 26 - Aus 28**

**874(T)/2020 AUSTRALIA - NORTHERN TERRITORY - Darwin - Elliot Point - Diving operations completed**

*Former Notice* - 494(T)/2020 is cancelled  
Department of Infrastructure, Planning and Logistics NT Notice 25(T)/2020

Cancel this notice on receipt.

**Chart formerly affected - Aus 24 - Aus 25 - Aus 26**

**875(T)/2020 AUSTRALIA - WESTERN AUSTRALIA - Browse Island - Drill rig northwestwards**

Australian Maritime Safety Authority Auscoast Warning 290/2020

Drill rig *Maersk Deliverer* is conducting drilling operations in position 13° 54'.3 S 123° 09'.8 E.

**Chart temporarily affected - Aus 319 - Aus 320 - Aus 322 - Aus 4721 (INT 721) - Aus 4722 (INT 722)**

**876(T)/2020 AUSTRALIA - WESTERN AUSTRALIA - Browse Island - Drill rig westwards moved**

*Former Notice* - 290(T)/2020 is cancelled

Australian Maritime Safety Authority Auscoast Warning 290/2020

Cancel this notice on receipt.

**Chart formerly affected - Aus 319 - Aus 320 - Aus 322 - Aus 4721 (INT 721) - Aus 4722 (INT 722)**

**877(T)/2020 AUSTRALIA - WESTERN AUSTRALIA - Dampier - Facilities Channel - Light relit**

*Former Notice* - 317(T)/2020 is cancelled

Pilbara Ports Authority

Cancel this notice on receipt.

**Chart formerly affected - Aus 57 - Aus 59**

**878(T)/2020 AUSTRALIA - WESTERN AUSTRALIA - Dampier - Geotechnical survey completed**

*Former Notice* - 519(T)/2020 is cancelled

Pilbara Ports Authority

Cancel this notice on receipt.

**Chart formerly affected - Aus 59**

**879(T)/2020 AUSTRALIA - WESTERN AUSTRALIA - INDIAN OCEAN - Perth to Cocos (Keeling) Islands - Survey operations**

Subcom

MV *Ocean Surveyor* is conducting survey operations between the following positions:

31° 56'.25 S 115° 45'.40 E  
 31° 53'.69 S 115° 40'.67 E  
 31° 49'.09 S 115° 39'.21 E  
 31° 49.96' S 115° 12'.40 E  
 31° 44'.68 S 114° 47'.17 E  
 31° 32'.00 S 114° 25'.96 E  
 31° 33'.25 S 114° 19'.08 E  
 31° 06'.17 S 113° 06'.55 E  
 31° 02'.03 S 112° 28'.52 E  
 23° 16'.34 S 100° 40'.71 E  
 15° 56'.58 S 93° 49'.21 E  
 15° 22'.92 S 93° 51'.70 E  
 13° 19'.50 S 95° 06'.42 E  
 12° 11'.21 S 96° 49'.67 E;  
 and  
 31° 24'.45 S 113° 50'.29 E  
 31° 32'.51 S 114° 03'.07 E.

Mariners are advised to navigate with caution in the area.

**Chart temporarily affected - Aus 112 - Aus 606 - Aus 607 - Aus 754 - Aus 4060 (INT 60) - Aus 4070 (INT 70) - Aus 4071 (INT 71) - Aus 4708 (INT 708) - Aus 4709 (INT 709) - Aus 4714 (INT 714) - Aus 4725 (INT 725)**



**880(T)/2020 AUSTRALIA - WESTERN AUSTRALIA - Montebello Islands - Drill rig northwestwards moved**  
*Former Notice - 73(T)/2020 is cancelled*  
 MODU *Ocean Apex*

Cancel this notice on receipt.

**Chart formerly affected - Aus 328 - Aus 4723 (INT 723)**

**881(T)/2020 AUSTRALIA - WESTERN AUSTRALIA - Rankin Bank - Drill rig northeastwards**  
 MODU *Ocean Apex*

Drill rig *Ocean Apex* is conducting drilling operations in position 19° 09'.57 S 116° 04'.60 E.

**Chart temporarily affected - Aus 327 - Aus 4723 (INT 723)**

**882(T)/2020 AUSTRALIA - WESTERN AUSTRALIA - Roly Rock - Drill rig westwards moved**  
*Former Notice - 785(T)/2020 is cancelled*  
 Australian Maritime Safety Authority

Cancel this notice on receipt.

**Chart formerly affected - Aus 57 - Aus 327 - Aus 742**

**883(T)/2020 AUSTRALIA - SOUTH AUSTRALIA - Coffin Bay Peninsula - Point Sir Isaac - Light unlit**  
 Department for Infrastructure and Transport SA Notice 26(T)/2020

The light, *Fl.2-5s 9M* (34° 25'.78 S 135° 12'.39 E), is unlit.

**Chart temporarily affected - Aus 342 - Aus 485 - Aus 4727 (INT 727)**

**884(T)/2020 AUSTRALIA - SOUTH AUSTRALIA - Glenelg - Shoaling; dredging operations**  
 Department of Planning, Transport and Infrastructure SA Notice 26/2018

Shoaling exists in the entrance channel to Holdfast Shores (34° 58'.42 S 138° 30'.51 E).

Dredging operations are in progress in the area.

Mariners are advised to navigate with caution in the area.

**Chart temporarily affected - Aus 781**

**885(T)/2020 AUSTRALIA - SOUTH AUSTRALIA - Glenelg - Shoaling; dredging operations**  
*Former Notice - 754(T)/2018 is cancelled*  
 Department of Planning, Transport and Infrastructure SA Notice 26/2018

Cancel this notice on receipt.

**Chart formerly affected - Aus 125**

**886(T)/2020 AUSTRALIA - SOUTH AUSTRALIA - Wirrina Cove - Light beacon altered**  
 Department of Planning, Transport and Infrastructure SA Notice 7/2019

The light beacon, *F.Bu* (35° 30'.07 S 138° 14'.35 E), has been temporarily altered to *F.Y.*

**Chart temporarily affected - Aus 347 - Aus 780**

**887(T)/2020 AUSTRALIA - SOUTH AUSTRALIA - Wirrina Cove - Light beacon altered***Former Notice* - 735(T)/2019 is cancelled

Department of Planning, Transport and Infrastructure SA Notice 7/2019

Cancel this notice on receipt.

**Chart formerly affected - Aus 125 - Aus 347 - Aus 780****888(T)/2020 AUSTRALIA - VICTORIA - Cape Duquesne - Scientific instruments**

Deakin University

Three special spherical light buoys, *Fl.Y.2-5s*, exist in the vicinity of 38°21'.70 S, 141°16'.53 E.

Mariners are advised to navigate with caution in the area.

**Chart temporarily affected - Aus 348****889(T)/2020 AUSTRALIA - VICTORIA - Lakes Entrance - North Arm - Chart withdrawn***Former Notice* - 38(T)/2020 is cancelled

Gippsland Ports Notice 291(T)/2019

Cancel this notice on receipt.

**Chart formerly affected - Aus 182****890(T)/2020 AUSTRALIA - VICTORIA - Lakes Entrance - Chart withdrawn***Former Notice* - 634(T)/2017 is cancelled

Gippsland Ports Notice 190(T)/2017

Cancel this notice on receipt.

**Chart formerly affected - Aus 182****891(T)/2020 AUSTRALIA - VICTORIA - Lakes Entrance - Reeve Channel - Chart withdrawn***Former Notice* - 806(P)/2019 is cancelled

Gippsland Ports Notice 160(P)/2019

Cancel this notice on receipt.

**Chart formerly affected - Aus 182****892(T)/2020 AUSTRALIA - VICTORIA - Ninety Mile Beach - Drill rig southwards moved***Former Notice* - 726(T)/2020 is cancelled

Australian Maritime Safety Authority

Drill Rig *Noble Tom Prosser* is conducting drilling operations in position 38° 24'.4 S 147° 31'.9 E.**Chart temporarily affected - Aus 357****893(T)/2020 AUSTRALIA - VICTORIA - Port Phillip - West Channel - The Narrows - Light beacon relit***Former Notice* - 727(T)/2020 is cancelled

Parks Victoria Notice 275/2020

Cancel this notice on receipt.

**Chart formerly affected - Aus 143 - Aus 158**

**894(T)/2020 AUSTRALIA - VICTORIA - Port Phillip - Patterson River - Light beacon unlit**  
Parks Victoria Notice 284(T)/2020

The starboard lateral light beacon, Q.G (38° 04'.48 S 145° 07'.07 E), is unlit.

**Chart temporarily affected - Aus 143**

**895(P)/2020 AUSTRALIA - VICTORIA - Port Welshpool to McLoughlins Entrance - Shoaling**  
Gippsland Ports

Latest survey shows shoaling and channel realignment in the following channels:

Middle Ground Channel (38° 42'.5 S 146° 31'.5 E)  
Snake Channel (38° 44'.4 S 146° 37'.0 E)  
Midge Channel (38° 41'.8 S 146° 39'.9 E)  
Port Albert Channel (38° 41'.5 S 146° 41'.2 E)  
Kate Kearney Channel (38° 41'.7 S 146° 43'.0 E)  
Kate Kearney Entrance (38° 41'.5 S 146° 45'.1 E)  
Tarra Channel (38° 40'.8 S 146° 45'.7 E)  
Boat Harbour Channel (38° 40'.4 S 146° 48'.4 E)  
Pelican Channel (38° 39'.3 S 146° 48'.7 E)  
Manns Beach Channel (38° 38'.8 S 146° 47'.4 E)  
Manns Channel (38° 40'.5 S 146° 49'.6 E)  
Oyster Bed Channel (38° 38'.5 S 146° 51'.2 E)  
McLoughlins Entrance (38° 37'.8 S 146° 53'.0 E).

Mariners are advised to navigate with caution in the area.

Charts will be updated in due course.

**Chart which will be affected - Aus 181**

**896(T)/2020 AUSTRALIA - VICTORIA - Port Welshpool to McLoughlins Entrance - Shoaling**  
*Former Notice - 641(P)/2020 is cancelled*  
Gippsland Ports

Cancel this notice on receipt.

**Chart formerly affected - Aus 181 - Aus 182**

II

**HYDROGRAPHIC REPORTS**

NIL

*To accompany Australian Notice to Mariners 852/2020*

ELECTRONIC NAVIGATIONAL CHART (ENC)  
Larger scale ENC content exists in this area.  
When using electronic navigation systems,  
certain vessels (e.g. restricted by depth or  
size) may benefit from the additional level of  
detail shown in the largest scale ENC  
product available.

*Note for chart Aus 377*

*To accompany Australian Notice to Mariners 859/2020*

ELECTRONIC NAVIGATIONAL CHART (ENC)  
Larger scale ENC content exists in this area.  
When using electronic navigation systems,  
certain vessels (e.g. restricted by depth or  
size) may benefit from the additional level of  
detail shown in the largest scale ENC  
product available.

*Note for chart Aus 780*

*To accompany Australian Notice to Mariners 861/2020*

ELECTRONIC NAVIGATIONAL CHART (ENC)  
Larger scale ENC content exists in this area.  
When using electronic navigation systems,  
certain vessels (e.g. restricted by depth or  
size) may benefit from the additional level of  
detail shown in the largest scale ENC  
product available.

*Note for chart Aus 181*

*To accompany Australian Notice to Mariners 859/2020*

ELECTRONIC NAVIGATIONAL CHART (ENC)  
Larger scale ENC content exists in this area.  
When using electronic navigation systems,  
certain vessels (e.g. restricted by depth or  
size) may benefit from the additional level of  
detail shown in the largest scale ENC  
product available.

*Note for chart Aus 126*

*To accompany Australian Notice to Mariners 859/2020*

ELECTRONIC NAVIGATIONAL CHART (ENC)  
Larger scale ENC content exists in this area.  
When using electronic navigation systems,  
certain vessels (e.g. restricted by depth or  
size) may benefit from the additional level of  
detail shown in the largest scale ENC  
product available.

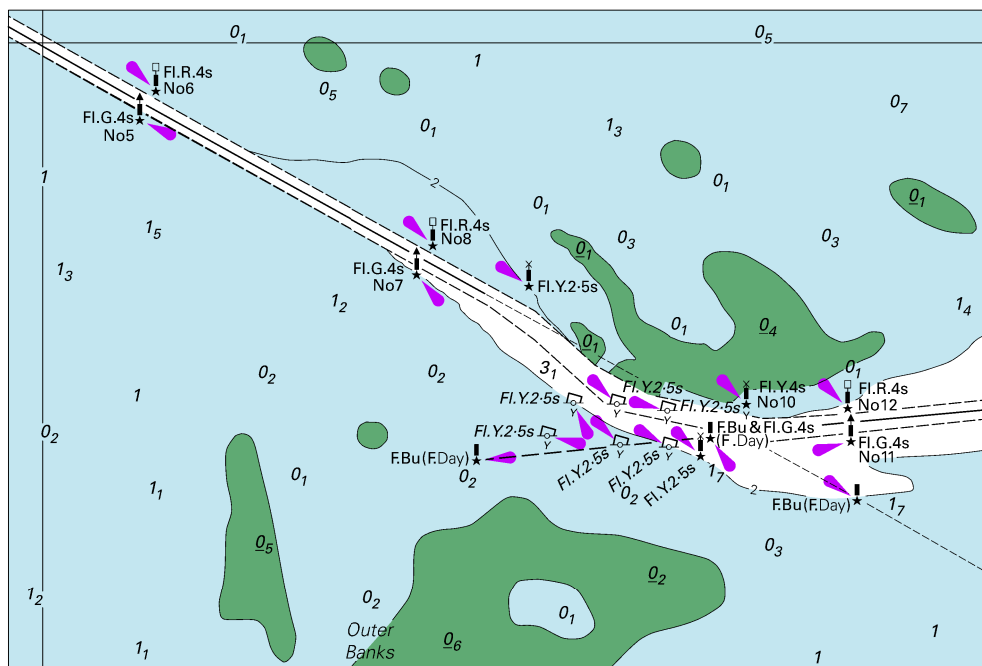
*Note for chart Aus 781*

*To accompany Australian Notice to Mariners 861/2020*

ELECTRONIC NAVIGATIONAL CHART (ENC)  
Larger scale ENC content exists in this area.  
When using electronic navigation systems,  
certain vessels (e.g. restricted by depth or  
size) may benefit from the additional level of  
detail shown in the largest scale ENC  
product available.

*Note for chart Aus 357*

To accompany Australian Notice to Mariners 850/2020

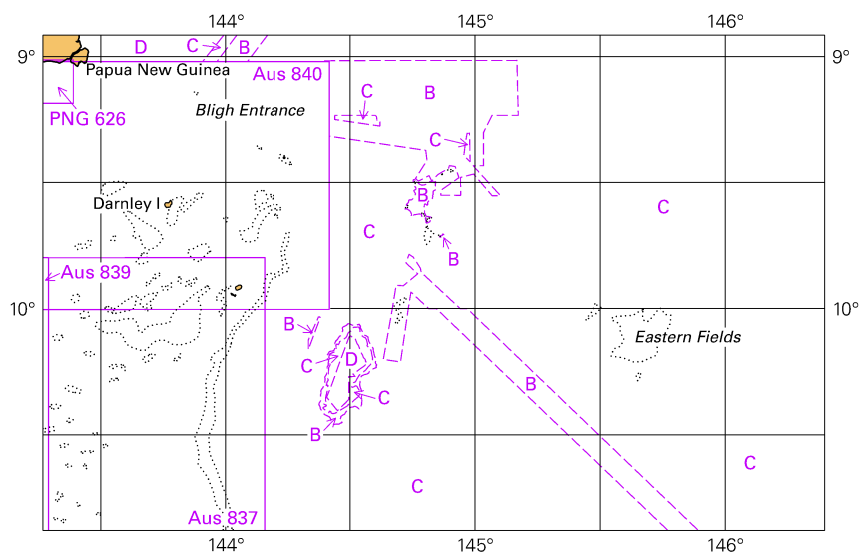


Block for chart Aus 6

© Commonwealth of Australia 2020

(129-0 x 87-0mm)

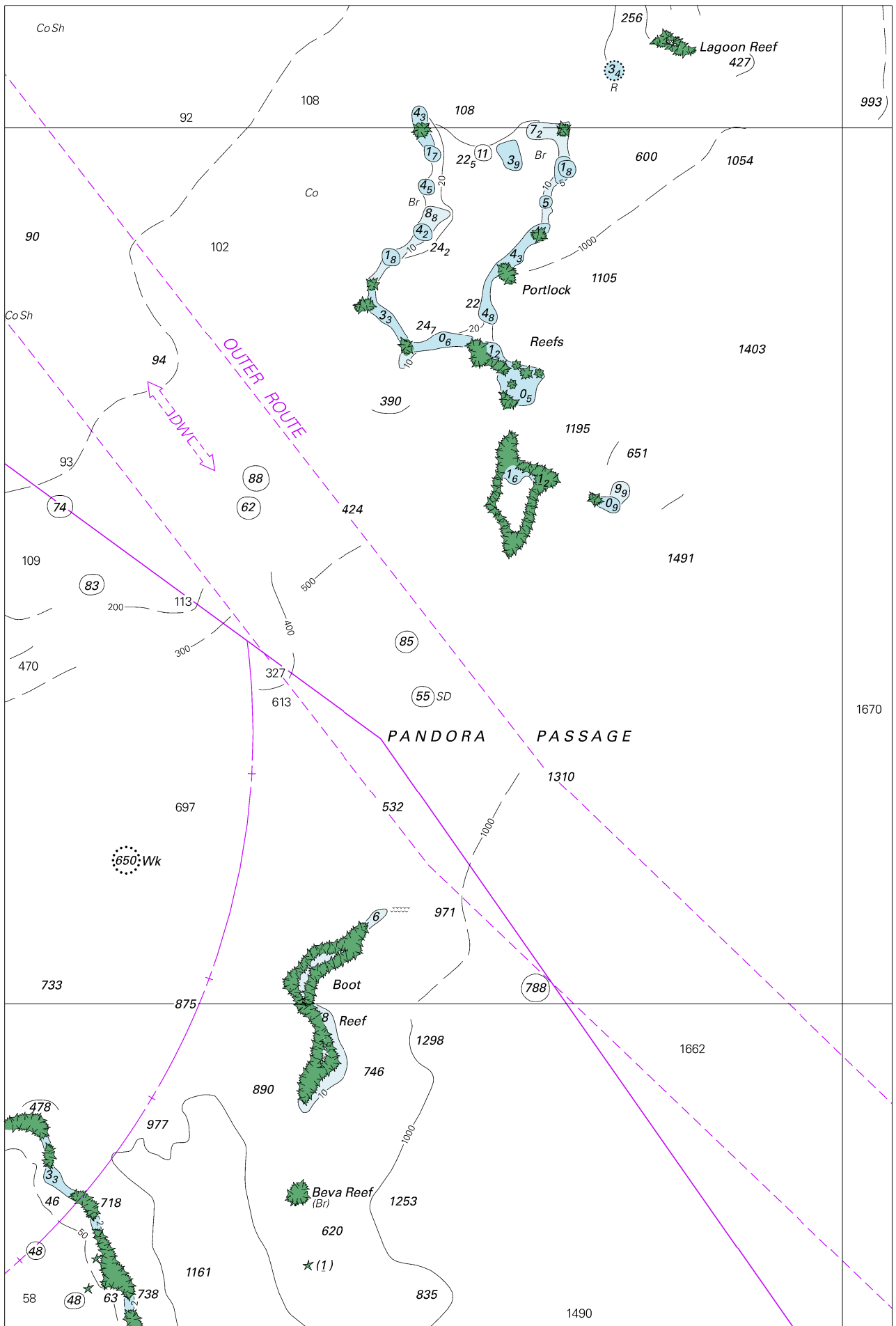
To accompany Australian Notice to Mariners 852/2020



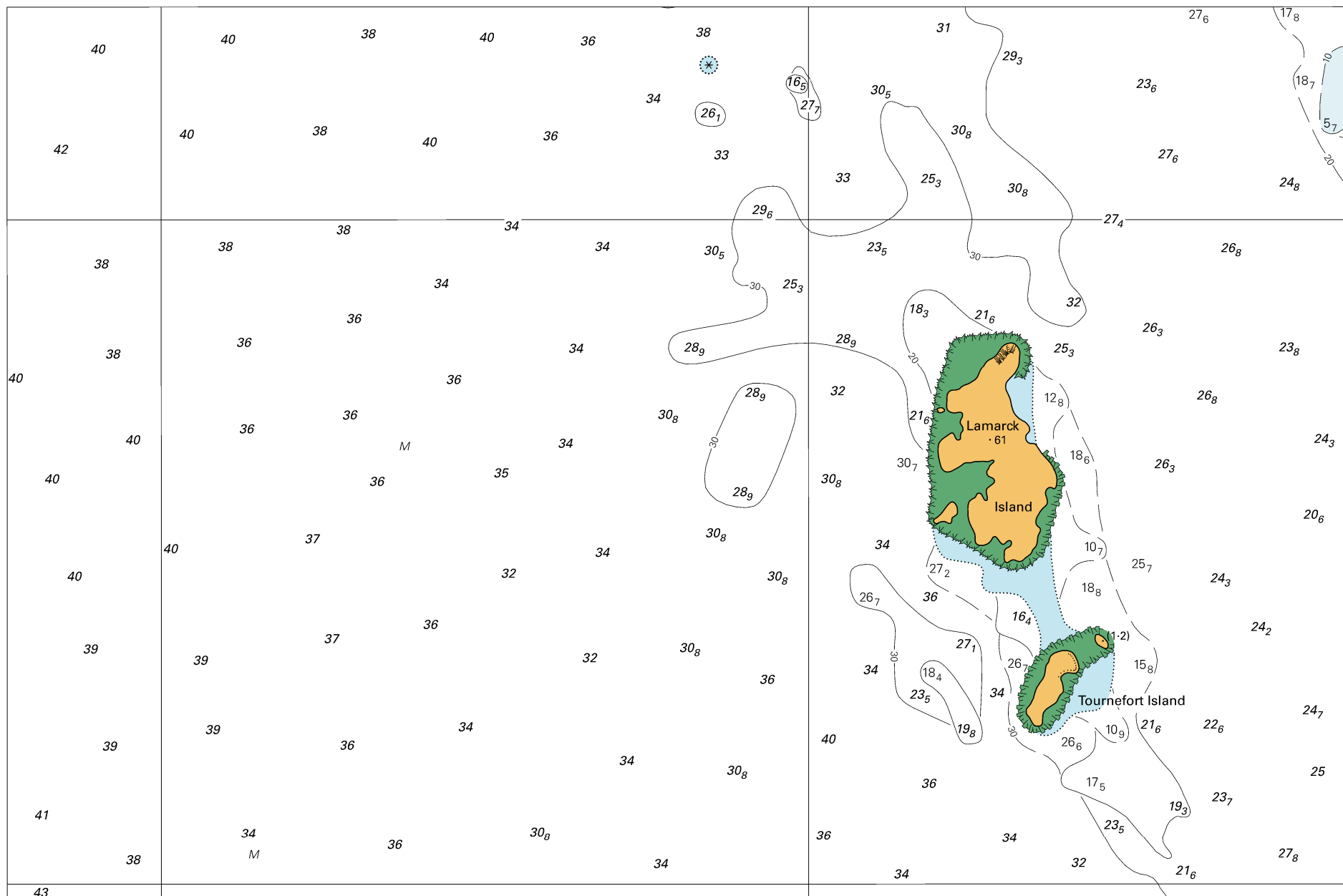
© Commonwealth of Australia 2020

Block for chart Aus 377

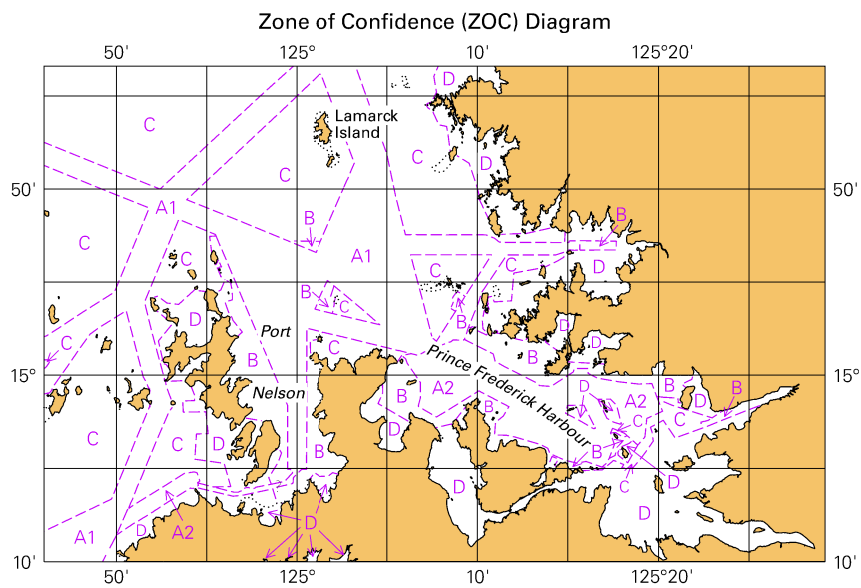
(103.3 x 65.3mm)







To accompany Australian Notice to Mariners 856/2020

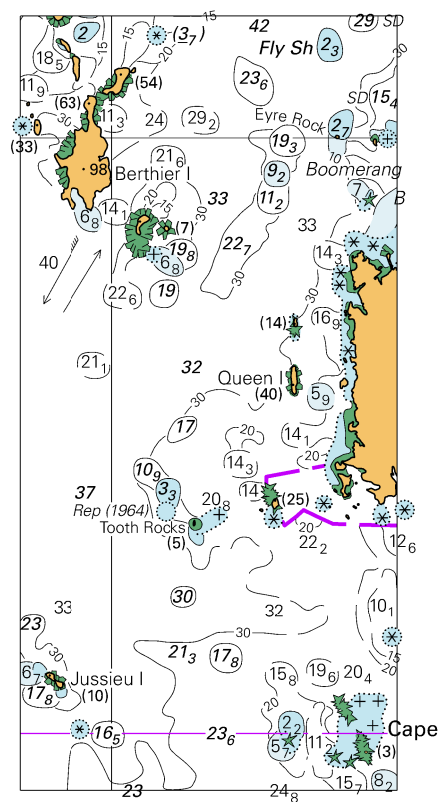


© Commonwealth of Australia 2020

Block for chart Aus 37 ZOC

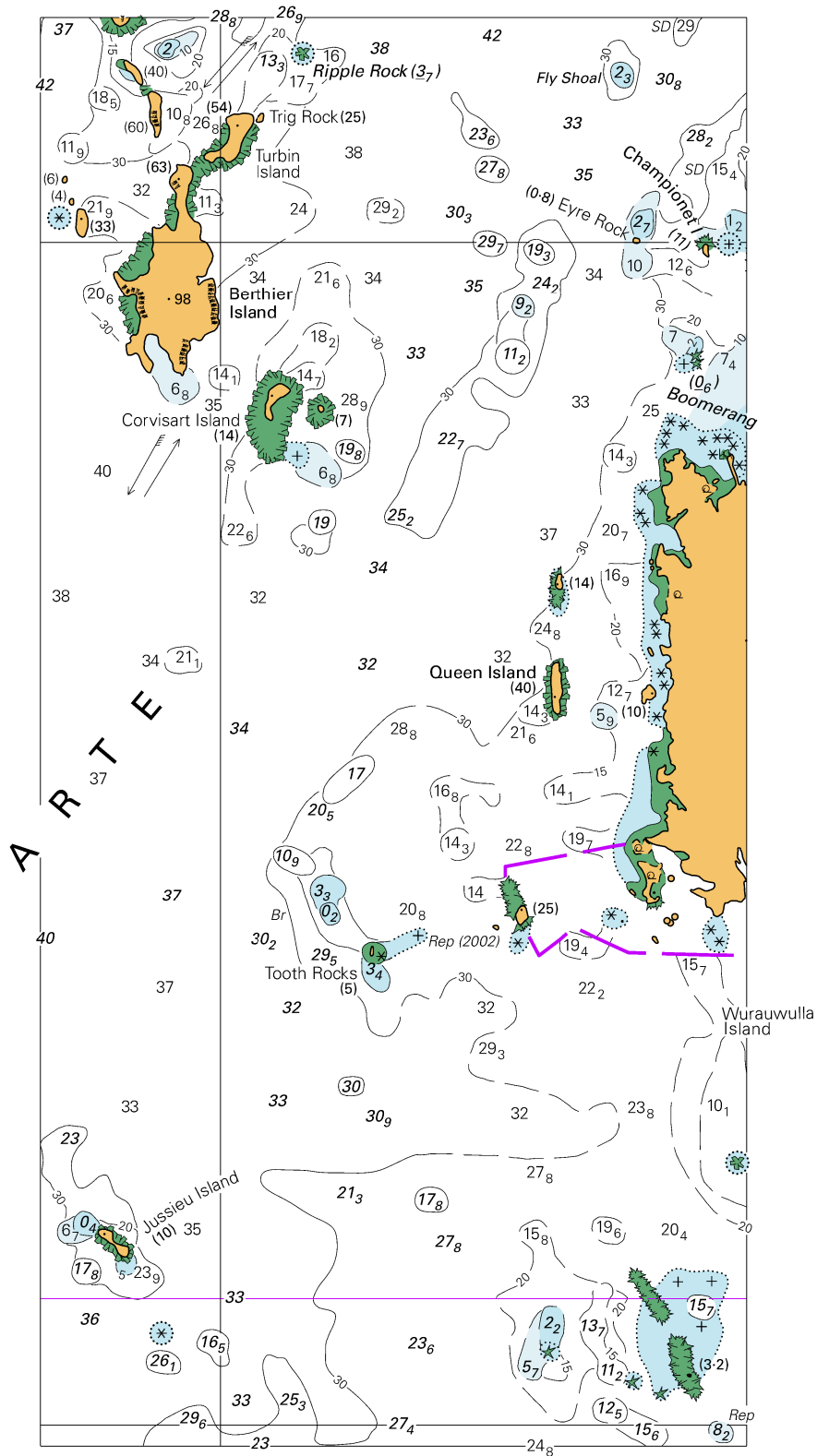
(103.2 x 65.4mm)

To accompany Australian Notice to Mariners 856/2020



© Commonwealth of Australia 2020  
 Block for chart Aus 320 (49.9 x 102.4mm)

To accompany Australian Notice to Mariners 856/2020

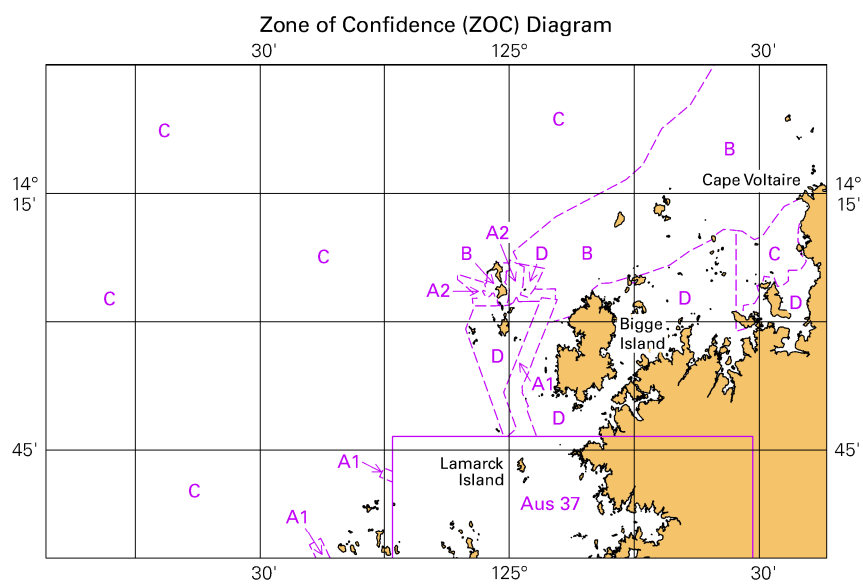


© Commonwealth of Australia 2020

Block for chart Aus 729

(101.1 x 204.7mm)

To accompany Australian Notice to Mariners 856/2020

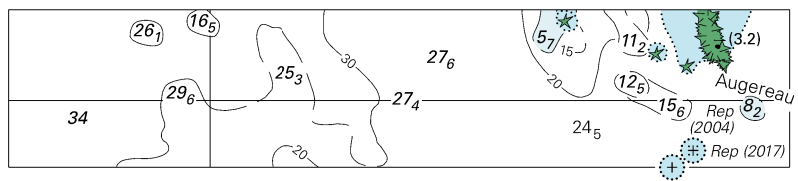


© Commonwealth of Australia 2020

Block for chart Aus 729 ZOC

(103.2 x 65.3mm)

To accompany Australian Notice to Mariners 856/2020

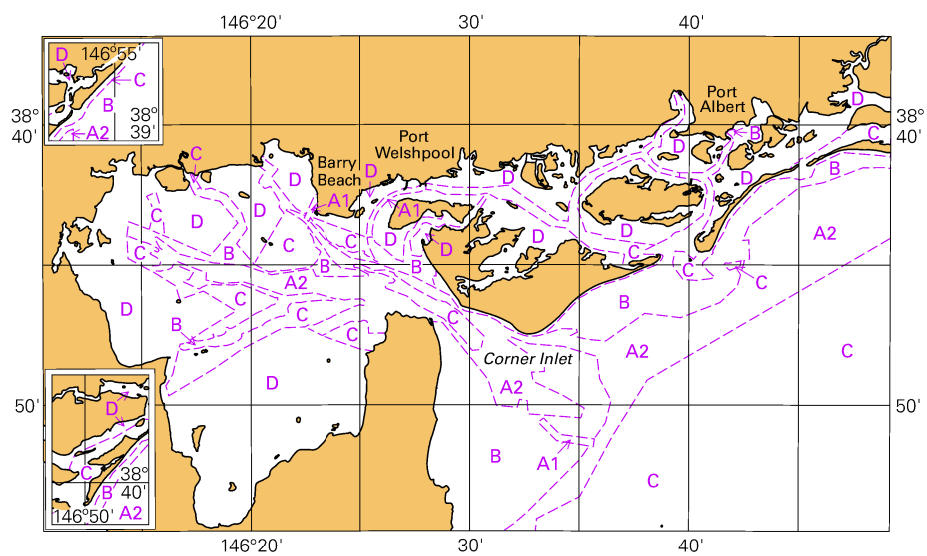


© Commonwealth of Australia 2020

Block for chart Aus 730

(103.3 x 20.8mm)

To accompany Australian Notice to Mariners 861/2020



© Commonwealth of Australia 2020

Block for chart Aus 181

(112.2 x 65.3mm)