



4 September 2020

Edition 18

AUSTRALIAN NOTICES TO MARINERS

Notices 685 - 737

Published fortnightly by the Australian Hydrographic Office



Australian Notices to Mariners are the authority for correcting charts and publications published by the Australian Hydrographic Office covering Australia, Papua New Guinea, Solomon Islands, Australian Antarctic Territory and Timor-Leste.

Commodore F.T. FREEMAN RAN
Hydrographer of Australia

SECTIONS.

- I. **Australian Notices to Mariners, including blocks and notes.**
- II. **Hydrographic Reports.**

SUPPLEMENTS.

- I. **Tracings**
- II. **Cumulative List of Australian Notices to Mariners.**
- III. **Cumulative List of Temporary and Preliminary Australian Notices to Mariners.**
- IV. **Temporary and Preliminary Notices in force.**

© Commonwealth of Australia 2020

This work is copyright. Apart from any use permitted under the Copyright Act 1968, no part may be reproduced by any process, adapted, communicated or commercially exploited without prior written permission from The Commonwealth represented by the Australian Hydrographic Office.

IMPORTANT NOTICE

This edition of Notices to Mariners includes all significant information affecting AHO products which the AHO has become aware of since the last edition. All reasonable efforts have been made to ensure the accuracy and completeness of the information, including third party information, on which these updates are based. The AHO regards third parties from which it receives information as reliable, however the AHO cannot verify all such information and errors may therefore exist. The AHO does not accept liability for errors in third party information.

GENERAL INSTRUCTIONS

The substance of these notices should be inserted on the charts affected.

Bearings are referred to the true compass and are reckoned clockwise from North; those relating to lights are given as seen by an observer from seaward.

Positions quoted in notices relate to WGS84 which is the horizontal datum for all charts produced by the Australian Hydrographic Office.

The range quoted for a light is its nominal range.

Depths are with reference to the chart datum of each chart. Heights are above mean high water springs or mean higher high water, as appropriate.

The capital letter (P) or (T) after the number of any notice denotes a preliminary or temporary notice respectively, which are contained separately at the end of the permanent notices.

REPORTING OF DANGERS

Mariners are particularly requested to notify the AUSTRALIAN HYDROGRAPHIC OFFICE, Locked Bag 8801 Wollongong, NSW 2500 (Fax 02-4223 6599, e-mail datacentre@hydro.gov.au or, alternatively by filling in and submitting the [Hydrographic Notes](#) forms located on the web site – www.hydro.gov.au), immediately on the discovery of new dangers or suspected dangers to navigation. For changes or defects in aids to navigation notify AusSAR (Fax 02-6230 6868 or email rccaus@amsa.gov.au).

AUTHORISED USE

Copies of Australian notices are available free of charge from the Australian Hydrographic Office (AHO) website (www.hydro.gov.au) and through the eNotices (email) service (www.hydro.gov.au/enotices/enotices.htm).

Individual Notices may be copied for the purpose of inserting Notice substance on official charts and publications. Paper copies may be printed by chart agents and distributed to customers on a cost recovery basis. Participating chart agents are listed on the AHO website as providing a 'Paper Notices to Mariners' service (www.hydro.gov.au/webapps/jsp/agents/agents-list.jsp). Copies of the notices may not be sold for profit without prior written agreement.

NUMERICAL INDEX OF NOTICES TO MARINERS

Edition No 18

Notices	Aus Chart, INT Chart, ENC Cell, AHP, BA Pubs
685	Aus 51, 208, 388, 396, PNG 388, 396
686	Aus 55, 56, 121, 122, 280, 281, 517, 523, 623, 742
687	Amendment to Australian National Tide Tables 2020
688	Aus 207
689	Aus 203
690	Aus 237
691	Aus 238
692	Aus 246, 819
693	Aus 249, 250, 823
694	Aus 252, 253, 824, 825
695	Aus 260, 822
696	Aus 4602, 4604, 4620, 4621, INT 602, 604, 620, 621
697	Aus 397, 4620, 4621, 4622, INT 620, 621, 622
698	Aus 389, 391, 4622, INT 622
699	Aus 299
700	Aus 50
701	Aus 50, 324
702	Aus 155
703	Aus 177, 792
704(T)	Aus 208
705(T)	Aus 207
706(T)	Aus 192
707(T)	Aus 238
708(T)	Aus 242
709(T)	Aus 268
710(T)	Aus 268
711(T)	Aus 253, 269
712(T)	Aus 256, 827
713(T)	Aus 4604, INT 604
714(T)	Aus 387, 388
715(T)	PNG 680
716(T)	Aus 4604, 4622, INT 604, 622, PNG 545, 554, 680
717(T)	Aus 299
718(T)	Aus 715
719(T)	Aus 319, 320, 322, 4721, 4722, INT 721, 722
720(T)	Aus 319, 320, 322, 4721, 4722, INT 721, 722
721(T)	Aus 754, 755
722(T)	Aus 81
723(T)	Aus 485, 780, 781
724(T)	Aus 448, 449, 450, 599, 600, 4060, 4070, 4074, 4710, INT 9038, 9035, 9033, 9037, 9036, 60, 70, 74, 710
725(T)	Aus 181
726(T)	Aus 357
727(T)	Aus 143, 158
728(T)	Aus 143, 157
729(T)	Aus 143
730(T)	Aus 789
731(T)	Aus 357, 4644, INT 644
732(T)	Aus 173, 795, 796
733(T)	Aus 163
734(T)	Aus 164
735(T)	Aus 178
736(T)	Aus 177, 792
737(T)	Aus 171, 795, 796

NUMERICAL INDEX OF CHARTS AFFECTED

Edition No 18

Aus Chart	Notices
Aus 50	700, 701
Aus 51	685
Aus 55	686
Aus 56	686
Aus 81	722(T)
Aus 121	686
Aus 122	686
Aus 143	727(T), 728(T), 729(T)
Aus 155	702
Aus 157	728(T)
Aus 158	727(T)
Aus 163	733(T)
Aus 164	734(T)
Aus 171	737(T)
Aus 173	732(T)
Aus 177	703, 736(T)
Aus 178	735(T)
Aus 181	725(T)
Aus 192	706(T)
Aus 203	689
Aus 207	688, 705(T)
Aus 208	685, 704(T)
Aus 237	690
Aus 238	691, 707(T)
Aus 242	708(T)
Aus 246	692
Aus 249	693
Aus 250	693
Aus 252	694
Aus 253	694, 711(T)
Aus 256	712(T)
Aus 260	695
Aus 268	709(T), 710(T)
Aus 269	711(T)
Aus 280	686
Aus 281	686
Aus 299	699, 717(T)
Aus 319	719(T), 720(T)
Aus 320	719(T), 720(T)
Aus 322	719(T), 720(T)
Aus 324	701
Aus 357	726(T), 731(T)
Aus 387	714(T)
Aus 388	685, 714(T)
Aus 389	698
Aus 391	698
Aus 396	685
Aus 397	697
Aus 448	724(T)
Aus 449	724(T)
Aus 450	724(T)
Aus 485	723(T)
Aus 517	686
Aus 523	686

Aus Chart	Notices
Aus 599	724(T)
Aus 600	724(T)
Aus 623	686
Aus 715	718(T)
Aus 742	686
Aus 754	721(T)
Aus 755	721(T)
Aus 780	723(T)
Aus 781	723(T)
Aus 789	730(T)
Aus 792	703, 736(T)
Aus 795	732(T), 737(T)
Aus 796	732(T), 737(T)
Aus 819	692
Aus 822	695
Aus 823	693
Aus 824	694
Aus 825	694
Aus 827	712(T)
Aus 4060	724(T)
Aus 4070	724(T)
Aus 4074	724(T)
Aus 4602	696
Aus 4604	696, 713(T), 716(T)
Aus 4620	696, 697
Aus 4621	696, 697
Aus 4622	697, 698, 716(T)
Aus 4644	731(T)
Aus 4710	724(T)
Aus 4721	719(T), 720(T)
Aus 4722	719(T), 720(T)
PNG 388	685
PNG 396	685
PNG 545	716(T)
PNG 554	716(T)
PNG 680	715(T), 716(T)

INT Chart	Notices
INT 9038	724(T)
INT 9035	724(T)
INT 9033	724(T)
INT 9037	724(T)
INT 9036	724(T)
INT 60	724(T)
INT 70	724(T)
INT 74	724(T)
INT 602	696
INT 604	696, 713(T), 716(T)
INT 620	696, 697
INT 621	696, 697

INT Chart	Notices
INT 622	697 , 698 , 716(T)
INT 644	731(T)
INT 710	724(T)
INT 721	719(T) , 720(T)
INT 722	719(T) , 720(T)

685 AUSTRALIA - Products - New Charts, New Editions, Withdrawn Charts

Australian Hydrographic Office

New Charts

<i>Chart</i>	<i>Title</i>	<i>Scale</i>	<i>Publication Date</i>	<i>Remarks</i>
PNG 388	Papua New Guinea - North Coast - Karkar Island to Kairiru Island 3° 04'·66 S – 4° 51'·92 S 143° 28'·63 E – 146° 17'·55 E Plans: Bogia Harbour 4° 15'·20 S – 4° 18'·10 S 144° 58'·00 E – 145° 01'·60 E Entrance to Sepik River 3° 47'·52 S – 3° 54'·92 S 144° 28'·00 E – 144° 34'·30 E	1:300 000 1:37 500 1:50 000	4 September 2020	Adoption of Papua New Guinea chart numbering. Replaces Aus 388. General updating throughout; including latest bathymetric data.
PNG 396	Papua New Guinea - New Britain - South Coast - Cape Anukur to Cape Kwoi 5° 29'·40 S – 7° 16'·28 S 149° 12'·07 E – 152° 14'·77 E	1:300 000	4 September 2020	Adoption of Papua New Guinea chart numbering. Replaces Aus 396. General updating throughout; including latest bathymetric data.

New Editions and Withdrawn Charts

<i>Chart</i>	<i>Title</i>	<i>Scale</i>	<i>Publication Date</i>	<i>Remarks</i>
NIL				

New Electronic Navigation Chart (Aus ENC)

<i>Cell Name</i>	<i>Title</i>	<i>Publication Date</i>	<i>Remarks</i>
AU5PQQ01	Australia - New South Wales - Port Macquarie (Hastings River)	27 August 2020	AU5219P3 has been withdrawn.
AU5ULA01	Australia - New South Wales - Ulladulla	27 August 2020	AU5191P3 has been withdrawn.
AU5KGC01	Australia - South Australia - Gulf St Vincent - Kingscote	27 August 2020	AU5129P1 has been withdrawn.
AU5YBA01	Australia - New South Wales - Yamba (Clarence River)	27 August 2020	AU5222P0 has been withdrawn.
AU5SHH01	Australia - New South Wales - Shellharbour (Bass Point)	27 August 2020	AU5808P1 has been withdrawn.
AU5BHR01	Australia - New South Wales - Broken Bay and Hawkesbury River	27 August 2020	AU5204P0 has been withdrawn.
AU5QDN01	Australia - New South Wales - Twofold Bay - Eden and East Boyd	3 September 2020	AU5192P0 has been withdrawn.
AU5THS01	Australia - New South Wales - Tweed Heads (Tweed River Entrance)	27 August 2020	AU5220P1 has been withdrawn.
AU5BNK01	Australia - New South Wales - Ballina (Richmond River)	27 August 2020	AU5220P2 has been withdrawn.
AU5CFS01	Australia - New South Wales - Coffs Harbour	27 August 2020	AU5220P3 has been withdrawn.
AU5WWR01	Australia - New South Wales - Woolli (Woolli Woolli River)	27 August 2020	AU5220P4 has been withdrawn.
AU5BWH01	Australia - New South Wales - Brunswick Heads (Brunswick River)	27 August 2020	AU5220P5 has been withdrawn.

685 AUSTRALIA - Products - New Charts, New Editions, Withdrawn Charts**New Electronic Navigation Chart (Aus ENC) (continued)**

<i>Cell Name</i>	<i>Title</i>	<i>Publication Date</i>	<i>Remarks</i>
AU5TRB01	Australia - New South Wales - Macleay River and South West Rocks (Trial Bay)	27 August 2020	AU5220P6 has been withdrawn.
AU5EVH01	Australia - New South Wales - Evans Head (Evans River)	27 August 2020	AU5220P7 has been withdrawn.
AU5TSV01	Australia - Queensland - Townsville	27 August 2020	AU5257P0 has been withdrawn.
AU5TSV02	Queensland - Great Barrier Reef - Nelly Bay	27 August 2020	AU5256P2 has been withdrawn.
AU5MYA01	Australia - New South Wales - Moruya River	3 September 2020	AU5191P5 has been withdrawn.
AU5CSR01	Australia - New South Wales - Crookhaven and Shoalhaven Rivers	3 September 2020	AU5191P7 has been withdrawn.
AU5QRX01	Australia - New South Wales - Narooma	3 September 2020	AU5191P8 has been withdrawn.
AU5CFG01	Australia - Queensland - Cape Ferguson (Australian Institute of Marine Science)	3 September 2020	AU5256P1 has been withdrawn.
AU5KIT01	Australia - South Australia - Kingston SE	3 September 2020	AU5127P3 has been withdrawn.
AU5VHR01	Australia - South Australia - Victor Harbor	3 September 2020	AU5127P11 has been withdrawn.
AU5CJA01	Australia - South Australia - Cape Jaffa	3 September 2020	AU5127P7 has been withdrawn.
AU5PEI01	Australia - South Australia - Port Elliot	3 September 2020	AU5127P6 has been withdrawn.
PG5653P0	Papua New Guinea - North East Coast - Dregerhafen to Finschhafen	3 September 2020	AU5653P0 has been withdrawn.
PG5644P1	Papua New Guinea - North East Coast - Oro Bay	3 September 2020	AU5644P1 has been withdrawn.

Charts withdrawn

<i>Chart</i>	<i>Remarks</i>
Aus 388	On publication of new chart PNG 388
Aus 396	On publication of new chart PNG 396

Charts withdrawn without replacement

<i>Chart</i>	<i>Title</i>	<i>Scale</i>	<i>Publication Date</i>
Aus 51 Edition 4	Australia - North West Coast - Western Australia - Broome	1:10 000	31 May 2019
Aus 208 Edition 7	Australia - East Coast - New South Wales - Newcastle Inset: Hunter River (South Arm)	1:7 500 1:10 000	18 May 2012

Chart permanently withdrawn

Charts listed above as withdrawn no longer meet chart carriage requirements and should be marked as "superseded" and replaced with the new chart/ new edition listed prior to passage through the area covered by the new chart.

When placing orders with a chart agent between notice of forthcoming edition and its publication, mariners should advise whether their order pertains to the current edition or the new edition.

For further details refer to the AHO website at www.hydro.gov.au for new edition and new chart stock arrival information.

686 AUSTRALIA - Products - New Charts and New Editions to be published shortly

Australian Hydrographic Office

New Charts to be published shortly

<i>Chart</i>	<i>Title</i>	<i>Scale</i>	<i>Remarks</i>
PNG 517	Papua New Guinea - North East Coast - Trobriand Islands to Ward Hunt Strait	1:150 000	Adoption of Papua New Guinea chart numbering. Replaces Aus 517. General updating throughout.
PNG 523	Papua New Guinea - North East Coast - Nassau Bay to Finschhafen	1:150 000	Adoption of Papua New Guinea chart numbering. Replaces Aus 523. General updating throughout; including new bathymetric data and submarine cable.
PNG 623	Papua New Guinea - South Coast - Approaches to Marshall Lagoon	1:50 000	Adoption of Papua New Guinea chart numbering. Replaces Aus 623. General updating throughout.

New Editions to be published shortly

<i>Chart</i>	<i>Title</i>	<i>Scale</i>	<i>Remarks</i>
Aus 55	Australia - North West Coast - Western Australia - Approaches to Port Walcott	1:50 000	New edition with general updating throughout; including latest bathymetric data.
Aus 742	Australia - North West Coast - Western Australia - Rosemary Island to Barrow Island	1:150 000	New edition with general updating throughout.

Charts to be withdrawn

<i>Chart</i>	<i>Remarks</i>
Aus 56	On publication of new edition Aus 55
Aus 517	On publication of new edition PNG 517
Aus 523	On publication of new edition PNG 523
Aus 623	On publication of new edition PNG 623

Charts to be withdrawn without replacement 18 September 2020

<i>Chart</i>	<i>Title</i>	<i>Scale</i>	<i>Publication Date</i>
Aus 121	Australia - South West Coast - Plans in South Australia		9 February 2018
Edition 3	(Sheet 6) Plans: Waterloo Bay Blanche Port Venus Bay Port Eyre Coffin Bay Streaky Bay	1:25 000 1:37 500 1:37 500 1:50 000 1:75 000 1:75 000	
Aus 122	Australia - South Coast - South Australia - Yatala Channel	1:15 000	24 October 2008
Edition 1	Plan: Thevenard Wharf	1:5 000	

686 AUSTRALIA - Products - New Charts and New Editions to be published shortly**Charts to be withdrawn without replacement 2 October 2020**

<i>Chart</i>	<i>Title</i>	<i>Scale</i>	<i>Publication Date</i>
Aus 280 Edition 5	Australia - East Coast - Queensland - Plans in Queensland (Sheet 3) Plans: Magpie Reef to Eden Reef Flinders Group	1:75 000 1:50 000	22 February 2019
Aus 281 Edition 3	Australia - East Coast - Queensland - First Three Mile Opening to Cape Direction	1:75 000	22 February 2019

687 AUSTRALIA - Product - Amendment to Australian National Tide Tables 2020

Australian Hydrographic Office

ANTT 2020

Page 364

Delete DREGERHAFEN To Chart Datum AUS 386 NC 28 MAR 2008 0.0*Insert* DREGERHAFEN To Chart Datum PNG 386 NC 21 AUG 2020 0.0

Page 371

Delete WEWAK To Chart Datum AUS 651 NC 18 JAN 2008 0.0*Insert* WEWAK To Chart Datum PNG 651 NC 21 AUG 2020 0.0**688 AUSTRALIA - NEW SOUTH WALES - Newcastle - Chart withdrawn; ZOC diagram; chart limits; chart note**

Australian Hydrographic Office

Note: position of existing chart notes may vary on certain charts.**Aus 207 [335/2020]**

<i>Insert</i>	accompanying block	32° 54'.7 S	151° 46'.3 E
	accompanying ZOC diagram	32° 55'.2 S	151° 42'.0 E
	chart note, ELECTRONIC NAVIGATIONAL CHART (ENC)	32° 57'.5 S	151° 43'.2 E
<i>Delete</i>	magenta limits with legend, Aus 208, centred on chart note, OMISSIONS FROM CHART	32° 55'.0 S 32° 57'.6 S	151° 47'.0 E 151° 41'.5 E

689 AUSTRALIA - NEW SOUTH WALES - Port Jackson - Bedlam Point - Nav aids

Transport for NSW

Aus 203 [NE 5/10/2018]

<i>Insert</i>	a dashed line in a direction 139° for a distance of 270m, thence a continuous line for 395m, with legend 319°, emanating from beacon	33° 50'.474 S	151° 07'.758 E
<i>Move</i>	beacon to	33° 50'.48 S 33° 50'.474 S	151° 07'.75 E 151° 07'.758 E
<i>Delete</i>	dashed line with legend 296°, emanating from beacon	33° 50'.48 S	151° 07'.75 E

690 AUSTRALIA - QUEENSLAND - Brisbane River - Luggage Point - Infrastructure*Former Notice* - 117(T)/2019 is cancelled

Maritime Safety Queensland

Aus 237 [226/2020]

<i>Insert</i>	accompanying block	27° 22'.9 S	153° 09'.3 E
---------------	--------------------	-------------	--------------

691 AUSTRALIA - QUEENSLAND - Brisbane River - Upper Lytton Reach - Nomenclature

Maritime Safety Queensland Notice 301/2020

Aus 238 [591/2020]

Amend	name to <i>Quantem Liquid Terminal Wharf</i>	27° 25'.46 S	153° 07'.66 E
-------	--	--------------	---------------

692 AUSTRALIA - QUEENSLAND - Gladstone - Boyne Island - Lights

Maritime Safety Queensland Notice 286/2020

Aus 246 [448/2020]

Amend	legend to 264°	23° 55'.69 S	151° 28'.56 E
	light to <i>Q.Bu 20m 13M (Q Day)</i>	23° 56'.37 S	151° 21'.96 E
	light to <i>Iso.Bu.2s 37m 13M (Iso.2s Day)</i>	23° 56'.47 S	151° 20'.92 E

Aus 819 [473/2020]

Amend	light to <i>Q.Bu 13M (Q Day)</i>	23° 56'.4 S	151° 22'.0 E
	light to <i>Iso.Bu.2s 13M (Iso.2s Day)</i>	23° 56'.5 S	151° 20'.9 E

693 AUSTRALIA - QUEENSLAND - Hay Point - Recommended tracks

Australian Hydrographic Office

Aus 249 [364/2020]

Replace	recommended track with recommended track with legend, 073° <i>Paddock Departure Track</i> , between	21° 15'.3 S	149° 20'.1 E
	recommended track with recommended track with legend, 063° <i>Channel Departure Track</i> , between	21° 12'.5 S	149° 30'.0 E
		21° 14'.7 S	149° 25'.4 E
		21° 12'.5 S	149° 30'.0 E

Aus 250 (Hay Point) [272/2020]

Replace	recommended track with recommended track with legend, 073° <i>Paddock Departure Track</i> , between	21° 15'.32 S	149° 20'.00 E
		21° 15'.09 S	149° 20'.81 E

Aus 823 [475/2020]

Replace	recommended track with recommended track with legend, 073° <i>Paddock Departure Track</i> , between	21° 15'.3 S	149° 20'.1 E
	recommended track with recommended track with legend, 063° <i>Channel Departure Track</i> , between	21° 12'.5 S	149° 30'.0 E
		21° 14'.7 S	149° 25'.4 E
		21° 12'.5 S	149° 30'.0 E

694 AUSTRALIA - QUEENSLAND - Pioneer Rocks - Light beacon

Maritime Safety Queensland

Aus 252 [339/2020]

Delete	structure colour, BRB	20° 13'.7 S	148° 45'.5 E
--------	-----------------------	-------------	--------------

Aus 253 [339/2020]

Insert	light beacon, <i>Fl(2)6s</i> , with isolated danger topmark	20° 13'.583 S	148° 45'.475 E
--------	---	---------------	----------------

Delete	light beacon	20° 13'.61 S	148° 45'.43 E
--------	--------------	--------------	---------------

Aus 824 [339/2020]

Delete	structure colour, BRB	20° 13'.7 S	148° 45'.5 E
--------	-----------------------	-------------	--------------

Aus 825 [590/2020]

Delete	structure colour, BRB	20° 13'.7 S	148° 45'.5 E
--------	-----------------------	-------------	--------------

695 AUSTRALIA - QUEENSLAND - Shoalwater Bay - North Channel - DepthsHMAS *Melville***Aus 260 [102/2019]**

Insert	depth, 16_m , and extend contour SE to enclose	22° 12'.07 S	150° 23'.22 E
Replace	depth, 17m, with depth, 14_m , enclosed by contour	22° 11'.4 S	150° 23'.2 E
Delete	depth, 17_m	22° 12'.0 S	150° 23'.2 E

Aus 822 [102/2019]

Replace	depth, 17m, with depth, 14_m , enclosed by contour	22° 11'.4 S	150° 23'.2 E
---------	--	-------------	--------------

696 AUSTRALIA - CORAL SEA - Diamond Islets - Depths

UKHO BA Notice 27/3298/2020

Aus 4602 (INT 602) [576/2019]

Replace	depth, 14m, with depth, $10m$	17° 31'.0 S	150° 53'.0 E
---------	-------------------------------	-------------	--------------

Aus 4604 (INT 604) [271/2020]

Replace	depth, 14m, with depth, $10m$	17° 31'.0 S	150° 53'.0 E
---------	-------------------------------	-------------	--------------

Aus 4620 (INT 620) [650/2020]

Insert	danger line, between	17° 26'.8 S	150° 47'.0 E
		17° 34'.6 S	150° 46'.6 E
		17° 39'.7 S	150° 48'.1 E
	depth, 19_m	17° 36'.7 S	150° 48'.3 E
Replace	depth, 8_m , with depth, 4_m	17° 27'.0 S	150° 54'.0 E
	depth, 13_m , with depth, $10m$	17° 31'.0 S	150° 53'.0 E
Delete	danger line, between	17° 26'.8 S	150° 47'.0 E
		17° 31'.7 S	150° 51'.4 E
		17° 39'.7 S	150° 48'.1 E
	depth, 58m	17° 35'.0 S	150° 50'.0 E
	danger circle, centred on	17° 35'.0 S	150° 47'.0 E

Aus 4621 (INT 621) [650/2020]

Insert	danger line, between	17° 26'.8 S	150° 47'.0 E
		17° 34'.6 S	150° 46'.6 E
		17° 39'.7 S	150° 48'.1 E
	depth, 19_m	17° 36'.7 S	150° 48'.3 E
Replace	depth, 8_m , with depth, 4_m	17° 27'.0 S	150° 54'.0 E
	depth, 13_m , with depth, $10m$	17° 31'.0 S	150° 53'.0 E
Delete	danger line, between	17° 26'.8 S	150° 47'.0 E
		17° 31'.7 S	150° 51'.4 E
		17° 39'.7 S	150° 48'.1 E
	depth, 58m	17° 35'.0 S	150° 50'.0 E
	danger circle, centred on	17° 35'.0 S	150° 47'.0 E

697 PAPUA NEW GUINEA - Cape Anukur to Cape Kwoi - Chart name

Australian Hydrographic Office

Aus 397 [233/2020]

Amend	legend to <i>Adjoining Chart PNG 396</i> in S border	6° 09'.7 S	151° 55'.0 E
-------	--	------------	--------------

Aus 4620 (INT 620) [696/2020]

Amend	legend to <i>PNG 396</i>	7° 15'.0 S	149° 18'.0 E
-------	--------------------------	------------	--------------

Aus 4621 (INT 621) [696/2020]

Amend	legend to <i>PNG 396</i>	7° 15'.0 S	149° 18'.0 E
-------	--------------------------	------------	--------------

Aus 4622 (INT 622) [650/2020]

Amend	legend to <i>PNG 396</i>	7° 15'.0 S	149° 18'.0 E
-------	--------------------------	------------	--------------

698 PAPUA NEW GUINEA - Karkar Island to Kairiru Island - Chart name

Australian Hydrographic Office

Aus 389 [652/2020]

Amend	legend to <i>Adjoining Chart PNG 388</i> in E border	3° 25'.0 S	144° 02'.7 E
-------	--	------------	--------------

Aus 391 [1086/2019]

Amend	legend to <i>Adjoining Chart PNG 388</i> in S border	3° 31'.5 S	146° 05'.0 E
-------	--	------------	--------------

Aus 4622 (INT 622) [697/2020]

Amend	legend to <i>PNG 388</i>	3° 07'.0 S	146° 10'.0 E
-------	--------------------------	------------	--------------

699 AUSTRALIA - TORRES STRAIT - Ellis Channel - Hovell Bar - Light buoy

Maritime Safety Queensland

Aus 299 [537/2020]

Move	light buoy	10° 34'.13 S	142° 15'.42 E
	to	10° 34'.141 S	142° 15'.350 E

700 AUSTRALIA - WESTERN AUSTRALIA - Broome - Chart withdrawn; chart notes; depths

Australian Hydrographic Office

Aus 50 [479/2020]

Insert	accompanying note, ELECTRONIC NAVIGATIONAL CHART (ENC)	17° 51'.6 S	122° 16'.6 E
	accompanying block B	17° 54'.5 S	122° 19'.0 E
	accompanying block A	18° 00'.5 S	122° 12'.7 E

Delete	chart note, OMISSIONS FROM CHART	17° 52'.0 S	122° 18'.0 E
--------	----------------------------------	-------------	--------------

701 AUSTRALIA - WESTERN AUSTRALIA - Broome - Marine farm

EGS Survey Pty Ltd

Aus 50 [700/2020]

Insert	dashed line and marine farm symbol with legend, (<i>see Note</i>), between	17° 53'.97 S	122° 07'.24 E
		17° 54'.14 S	122° 07'.09 E
		17° 54'.21 S	122° 06'.84 E
		17° 54'.48 S	122° 07'.22 E
		17° 54'.48 S	122° 07'.61 E
		17° 54'.40 S	122° 07'.98 E
		17° 53'.97 S	122° 07'.98 E
		17° 53'.97 S	122° 07'.24 E

Aus 324 [479/2020]

Insert	marine farm symbol with legend, (<i>see Note</i>), centred on	17° 54'.2 S	122° 07'.5 E
--------	---	-------------	--------------

702 AUSTRALIA - VICTORIA - Port Phillip - Altona - Light beacon

Parks Victoria Notice 188/2020

Aus 155 [656/2020]

Replace	beacon with port lateral light beacon, <i>Fl.R.4s</i> , with topmark	37° 52'.37 S	144° 50'.95 E
---------	--	--------------	---------------

Aus 155 (Altona) [656/2020]

Insert	accompanying block	37° 52'.1 S	144° 51'.1 E
--------	--------------------	-------------	--------------

703 AUSTRALIA - TASMANIA - Macquarie Harbour - Scientific instruments*Former Notice - 169(T)/2016 is cancelled*

Institute for Marine and Antarctic Studies

Aus 177 [114/2019]

Insert	danger circle with legend, <i>ODAS</i> , centred on	42° 22'.60 S	145° 31'.90 E
	danger circle with legend, <i>ODAS</i> , centred on	42° 23'.78 S	145° 28'.02 E

Aus 792 [661/2017]

Insert	danger circle with legend, <i>ODAS</i> , centred on	42° 22'.60 S	145° 31'.90 E
	danger circle with legend, <i>ODAS</i> , centred on	42° 23'.78 S	145° 28'.02 E

704(T)/2020 AUSTRALIA - NEW SOUTH WALES - Newcastle - Throsby Basin - Light unlit*Former Notice* - 102(T)/2020 is cancelled

Port Authority of New South Wales Notice 1(T)/2020

Cancel this notice on receipt.

Chart formerly affected - Aus 208**705(T)/2020 AUSTRALIA - NEW SOUTH WALES - Newcastle - Throsby Basin - Light unlit**

Port Authority of New South Wales Notice 1(T)/2020

The light, *WRG.34m 15M* (32° 55'.40 S 151° 45'.68 E), is unlit.**Chart temporarily affected - Aus 207****706(T)/2020 AUSTRALIA - NEW SOUTH WALES - Twofold Bay - Scientific instruments recovered***Former Notice* - 1035(T)/2016 is cancelled

Port Authority of New South Wales

Cancel this notice on receipt.

Chart formerly affected - Aus 192**707(T)/2020 AUSTRALIA - QUEENSLAND - Brisbane River - South Brisbane Reach - Scientific instrument recovered***Former Notice* - 176(T)/2017 is cancelled

Maritime Safety Queensland

Cancel this notice on receipt.

Chart formerly affected - Aus 238**708(T)/2020 AUSTRALIA - QUEENSLAND - Bundaberg - Burnett River - Nav aids restored***Former Notice* - 252(T)/2017 is cancelled

Maritime Safety Queensland

Cancel this notice on receipt.

Chart formerly affected - Aus 242**709(T)/2020 AUSTRALIA - QUEENSLAND - Gloucester Passage - Light buoy unlit***Former Notice* - 662(T)/2020 is cancelled

Maritime Safety Queensland Notice 298(T)/2020

The east cardinal light buoy, *VQ(3)5s* (20° 03'.52 S 148° 27'.04 E), is unlit.**Chart temporarily affected - Aus 268****710(T)/2020 AUSTRALIA - QUEENSLAND - Gloucester Passage - Light buoy relit***Former Notice* - 1257(T)/2019 is cancelled

Maritime Safety Queensland

Cancel this notice on receipt.

Chart formerly affected - Aus 268

711(T)/2020 AUSTRALIA - QUEENSLAND - Port of Airlie - Muddy Bay - Wreck
Maritime Safety Queensland Notice 293(T)/2020

A wreck marked by a special light buoy, *Fl.Y.3s*, exists in position 20° 15'.80 S 148° 43'.93 E.

Mariners are advised to navigate with caution in the area.

Chart temporarily affected - Aus 253 - Aus 269

712(T)/2020 AUSTRALIA - QUEENSLAND - Rattlesnake Island - Live firing
Maritime Safety Queensland Notice 299(T)/2020

Live firing activities will be conducted within a 5M radius of position 19° 02'.27 S 146° 36'.43 E on 21 September 2020.

Mariners are advised to navigate with caution in the area.

Chart temporarily affected - Aus 256 - Aus 827

713(T)/2020 AUSTRALIA - CORAL SEA - Bampton Reef - Light buoy northwards restored
Former Notice - 639(T)/2015 is cancelled
Australian Bureau of Meteorology

Cancel this notice on receipt.

Chart formerly affected - Aus 4604 (INT 604)

714(T)/2020 PAPUA NEW GUINEA - Karkar Island - Shoaling charted
Former Notice - 983(T)/2018 is cancelled
Australian Hydrographic Office

Cancel this notice on receipt.

Chart formerly affected - Aus 387 - Aus 388

715(T)/2020 PAPUA NEW GUINEA - Rabaul - Light relit
Former Notice - 517(T)/2020 is cancelled
National Maritime Safety Authority PNG Coastal Navigation Warning 32/2020

Cancel this notice on receipt.

Chart formerly affected - PNG 680

716(T)/2020 PAPUA NEW GUINEA - Tavui Point - Light unlit
Former Notice - 563(T)/2020 is cancelled
National Maritime Safety Authority PNG Coastal Navigation Warning 27/2020, 33/2020

The light, *Fl.8s 47m 18M* (4° 08'.16 S 152° 10'.20 E), is unlit.

Chart temporarily affected - Aus 4604 (INT 604) - Aus 4622 (INT 622) - PNG 545 - PNG 554 - PNG 680

717(T)/2020 AUSTRALIA - TORRES STRAIT - Ellis Channel - Hovell Bar - Light buoy restored
Former Notice - 1111(T)/2019 is cancelled
Maritime Safety Queensland

Cancel this notice on receipt.

Chart formerly affected - Aus 299

718(T)/2020 AUSTRALIA - NORTHERN TERRITORY - Gove Harbour - Scientific instruments recovered
Former Notice - 1152(T)/2018 is cancelled
 Rio Tinto

Cancel this notice on receipt.

Chart formerly affected - Aus 715

719(T)/2020 AUSTRALIA - WESTERN AUSTRALIA - Browse Island - Subsea operations completed
Former Notice - 1162(T)/2019 is cancelled
 McDermott Australia

Cancel this notice on receipt.

Chart formerly affected - Aus 319 - Aus 320 - Aus 322 - Aus 4721 (INT 721) - Aus 4722 (INT 722)

720(T)/2020 AUSTRALIA - WESTERN AUSTRALIA - Browse Island - Subsea operations completed
Former Notice - 1163(T)/2019 is cancelled
 McDermott Australia

Cancel this notice on receipt.

Chart formerly affected - Aus 319 - Aus 320 - Aus 322 - Aus 4721 (INT 721) - Aus 4722 (INT 722)

721(T)/2020 AUSTRALIA - WESTERN AUSTRALIA - Five Fathom Bank - Scientific instrument recovered
Former Notice - 940(T)/2016 is cancelled
 Carnegie Wave Energy Ltd

Cancel this notice on receipt.

Chart formerly affected - Aus 754 - Aus 755

722(T)/2020 AUSTRALIA - WESTERN AUSTRALIA - Geraldton - Light buoy
 Mid West Ports Notice 4/2020

A special spar light buoy, *Fl. Y. 4s*, exists in position 28° 46'.37 S 114° 36'.18 E.

Chart temporarily affected - Aus 81

723(T)/2020 AUSTRALIA - SOUTH AUSTRALIA - Investigator Strait to Gulf St Vincent - Tide gauges
 Department for Infrastructure and Transport SA Notice 24(T)/2020

Tide gauges, 3m above the seabed, exist in the following positions:

34° 42'.09 S 138° 07'.34 E
 34° 57'.48 S 138° 05'.75 E
 35° 15'.30 S 138° 13'.00 E
 35° 16'.79 S 137° 23'.74 E
 35° 20'.50 S 137° 46'.80 E.

Mariners are advised to navigate with caution in the area and avoid anchoring or trawling.

Chart temporarily affected - Aus 485 - Aus 780 - Aus 781

724(T)/2020 SOUTHERN OCEAN - Survey and research operations completed
Former Notice - 76(T)/2020 is cancelled
 JAMSTEC

Cancel this notice on receipt.

Chart formerly affected - Aus 448 (INT 9038) - Aus 449 (INT 9035) - Aus 450 (INT 9033) - Aus 599 (INT 9037) - Aus 600 (INT 9036) - Aus 4060 (INT 60) - Aus 4070 (INT 70) - Aus 4074 (INT 74) - Aus 4710 (INT 710)

725(T)/2020 AUSTRALIA - VICTORIA - Corner Inlet - Light buoy damaged

Gippsland Ports Notice 231(T)/2020

The port lateral light buoy, *Fl.R.4s No6* (38° 47'.05 S 146° 28'.81 E), is damaged and unlit.

Chart temporarily affected - Aus 181

726(T)/2020 AUSTRALIA - VICTORIA - Ninety Mile Beach - Drill rig eastwards

Esso Australia Pty Ltd

Drill Rig *Noble Tom Prosser* is conducting drilling operations in position 38° 11'.70 S 147° 40'.45 E.

Chart temporarily affected - Aus 357

727(T)/2020 AUSTRALIA - VICTORIA - Port Phillip - West Channel - The Narrows - Light beacon unlit

Parks Victoria Notice 235(T)/2020

The starboard lateral light beacon, *Fl(2)G.4s No5* (38° 14'.81 S 144° 43'.19 E), is unlit.

Chart temporarily affected - Aus 143 - Aus 158

728(T)/2020 AUSTRALIA - VICTORIA - Port Phillip - Point Wilson - Exclusion zone

Victorian Regional Channels Authority Notice 239/2020

A 300m exclusion zone exists outwards from the centreline of Point Wilson Pier (34° 28'.26 S 150° 54'.67 E). It is marked by special light buoys, *Is.2s*, in the following positions:

38° 05'.51 S 144° 30'.73 E
 38° 05'.68 S 144° 31'.32 E
 38° 05'.84 S 144° 31'.86 E
 38° 05'.88 S 144° 32'.45 E
 38° 05'.64 S 144° 32'.48 E
 38° 05'.55 S 144° 32'.04 E
 38° 05'.38 S 144° 31'.47 E
 38° 05'.20 S 144° 30'.93 E.

Only vessels involved in the remediation works are permitted to enter the area.

Mariners are advised to navigate with caution in the area.

Chart temporarily affected - Aus 143 - Aus 157

729(T)/2020 AUSTRALIA - VICTORIA - Port Phillip - Frankston - Pier reconstruction works completed*Former Notice* - 923(T)/2019 is cancelled

Parks Victoria Notice 243/2020

Cancel this notice on receipt.

Chart formerly affected - Aus 143

730(T)/2020 AUSTRALIA - BASS STRAIT - King Island - Scientific instruments recovered*Former Notice* - 89(T)/2018 is cancelled

Marine and Safety Tasmania Notice M6/2018

Cancel this notice on receipt.

Chart formerly affected - Aus 789

731(T)/2020 AUSTRALIA - BASS STRAIT - Light relit*Former Notice* - 434(T)/2014 is cancelled

Exxon Mobil

Cancel this notice on receipt.

Chart formerly affected - Aus 357 - Aus 4644 (INT 644)

732(T)/2020 AUSTRALIA - TASMANIA - Bruny Island - Cape Connella - Light buoys*Former Notice* - 745(T)/2019 is cancelled

Marine and Safety Tasmania Notice M119/2019

A special light buoy, *Fl.Y.1-5s*, exists in position 43° 23'.47 S 147° 23'.94 E.**Chart temporarily affected - Aus 173 - Aus 795 - Aus 796****733(T)/2020 AUSTRALIA - TASMANIA - Burnie - Harbour works***Former Notice* - 47(T)/2019 is cancelled

Marine and Safety Tasmania Notice M217/2018, Toll Group

Harbour works associated with the extension of the wharf at berth 5 (41° 03'.04 S 145° 54'.70 E) are in progress.

Mariners are advised to navigate with caution in the area.

Chart temporarily affected - Aus 163**734(T)/2020 AUSTRALIA - TASMANIA - Devonport - Drilling operations completed***Former Notice* - 989(T)/2019 is cancelled

Marine and Safety Tasmania

Cancel this notice on receipt.

Chart formerly affected - Aus 164**735(T)/2020 AUSTRALIA - TASMANIA - King Island - Grassy Harbour - Harbour works completed***Former Notice* - 1127(T)/2019 is cancelled

Marine and Safety Tasmania

Cancel this notice on receipt.

Chart formerly affected - Aus 178**736(T)/2020 AUSTRALIA - TASMANIA - Macquarie Harbour - Scientific instruments recovered***Former Notice* - 587(T)/2017 is cancelled

Marine and Safety Tasmania

Cancel this notice on receipt.

Chart formerly affected - Aus 177 - Aus 792**737(T)/2020 AUSTRALIA - TASMANIA - Storm Bay - Scientific instruments recovered***Former Notice* - 1346(T)/2019 is cancelled

Marine and Safety Tasmania Notice M189/2019

Cancel this notice on receipt.

Chart formerly affected - Aus 171 - Aus 795 - Aus 796

II

HYDROGRAPHIC REPORTS

NIL

To accompany Australian Notice to Mariners 688/2020

ELECTRONIC NAVIGATIONAL CHART (ENC)
Larger scale ENC content exists in this area.
When using electronic navigation systems,
certain vessels (e.g. restricted by depth or
size) may benefit from the additional level of
detail shown in the largest scale ENC
product available.

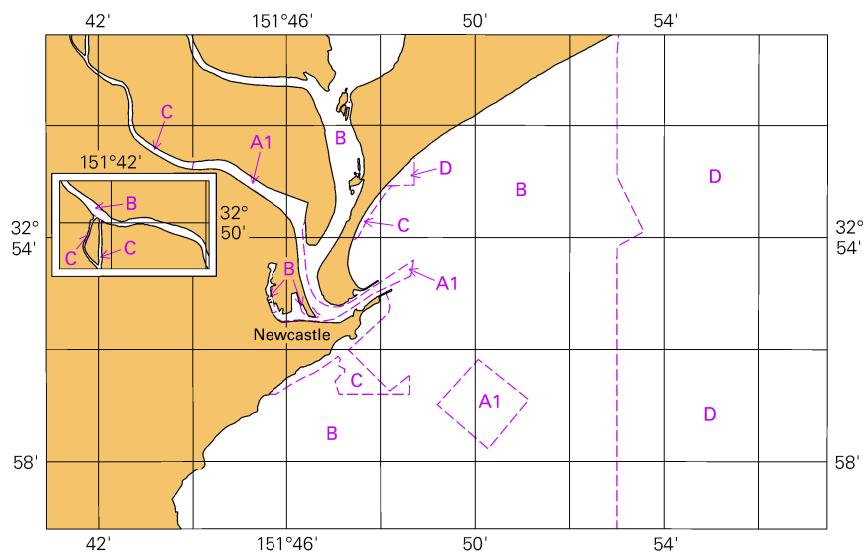
Note for chart Aus 207

To accompany Australian Notice to Mariners 700/2020

ELECTRONIC NAVIGATIONAL CHART (ENC)
Larger scale ENC content exists in this area.
When using electronic navigation systems,
certain vessels (e.g. restricted by depth or
size) may benefit from the additional level of
detail shown in the largest scale ENC
product available.

Note for chart Aus 50

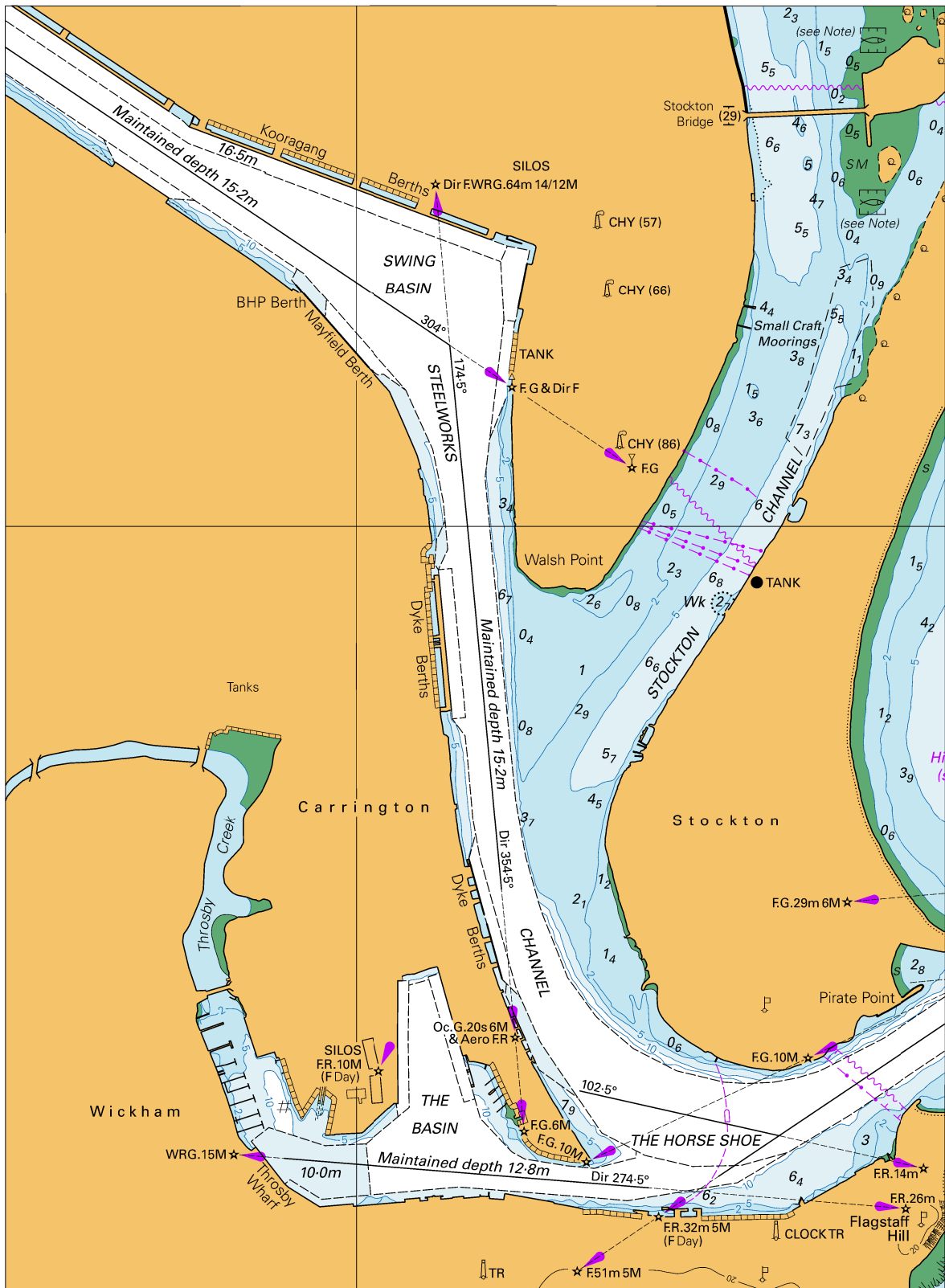
To accompany Australian Notice to Mariners 688/2020



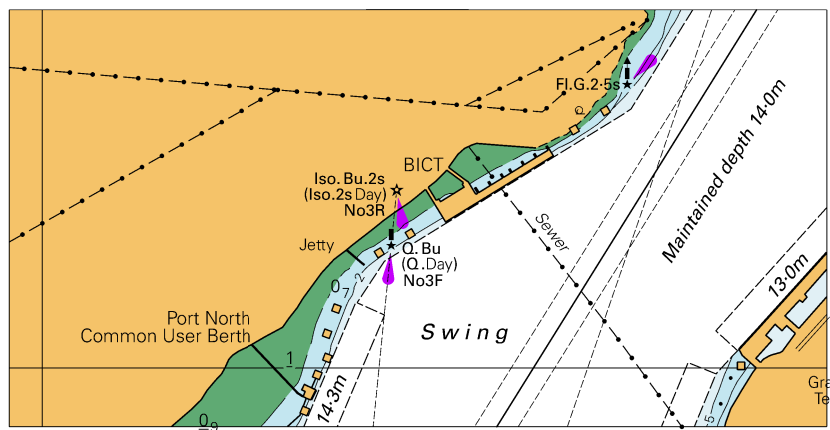
© Commonwealth of Australia 2020

Block for chart Aus 207

(103.3 x 65.3mm)



To accompany Australian Notice to Mariners 690/2020

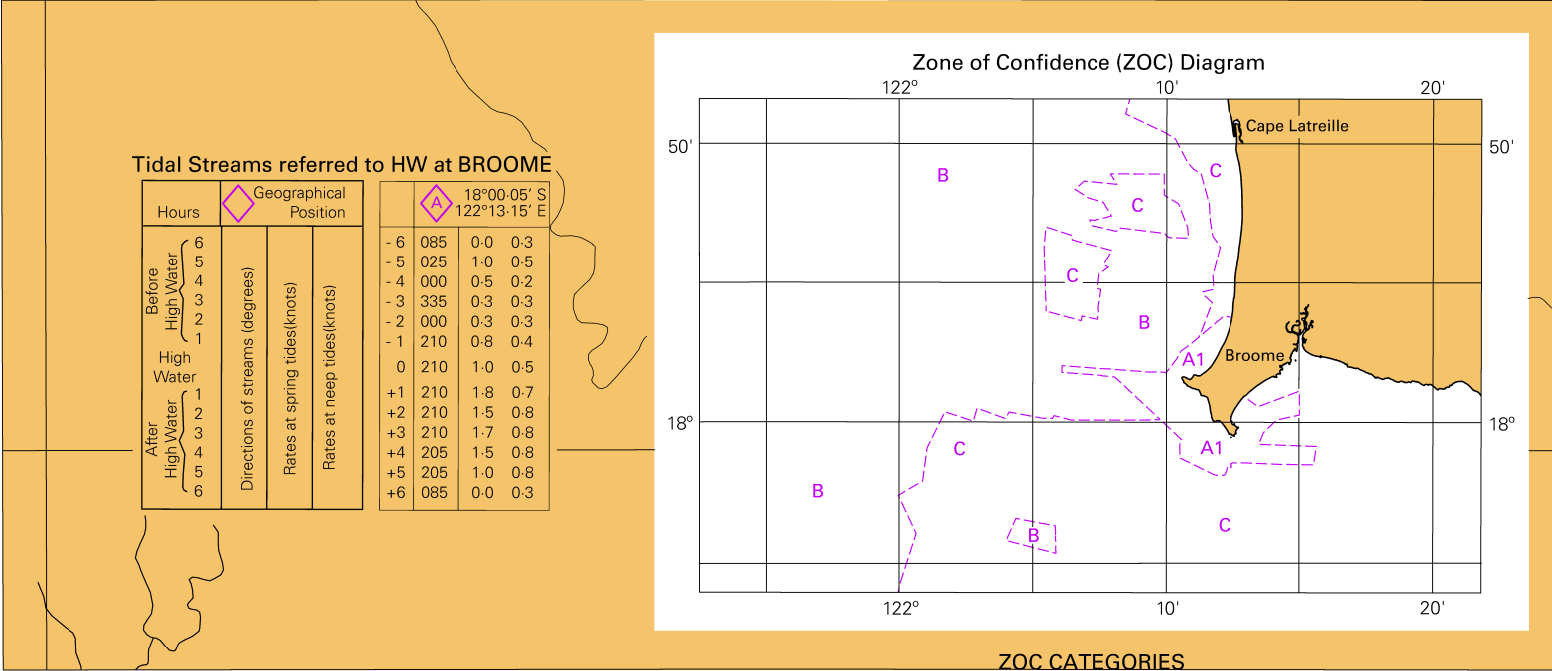


© Commonwealth of Australia 2020

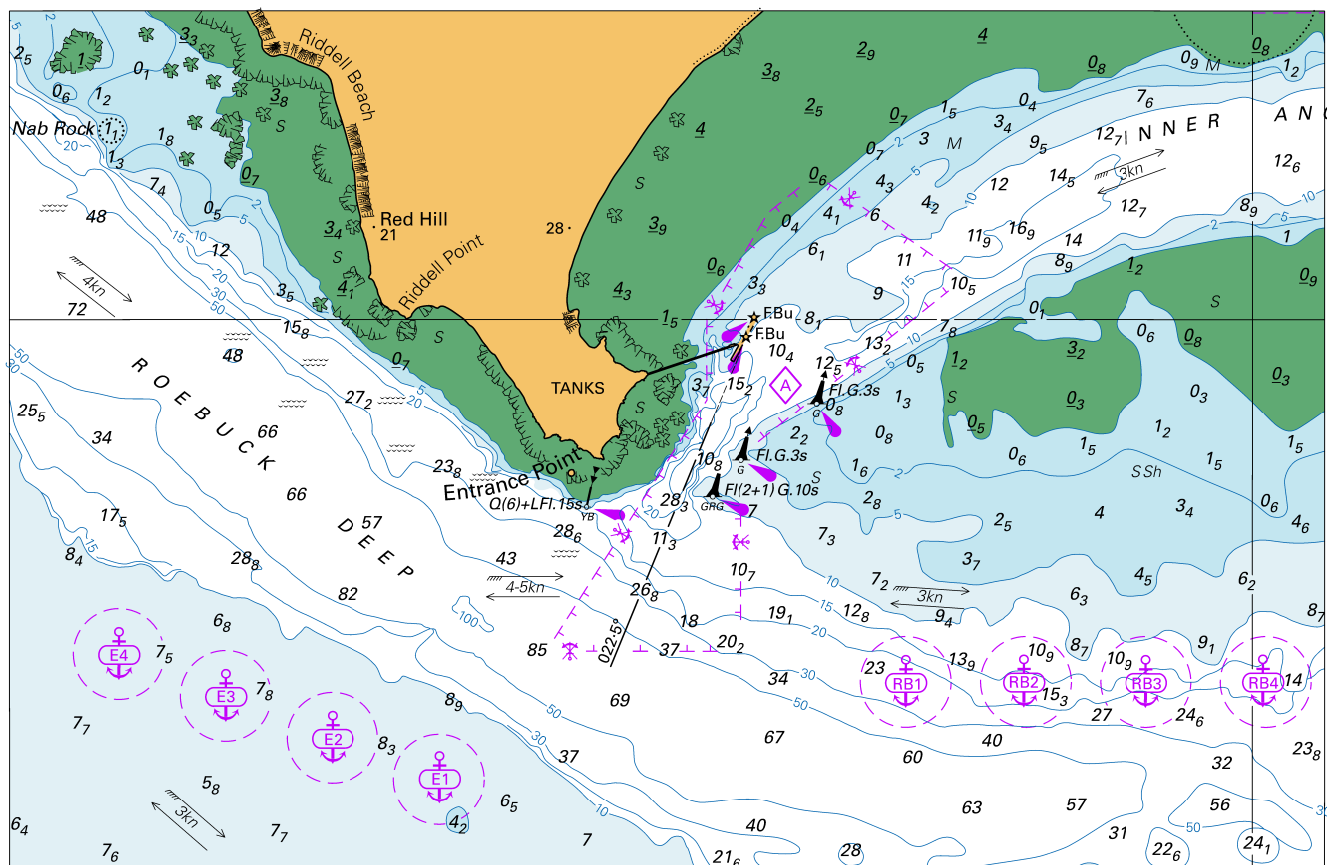
Block for chart Aus 237

(108.1 x 55.0mm)

To accompany Australian Notice to Mariners 700/2020



To accompany Australian Notice to Mariners 700/2020

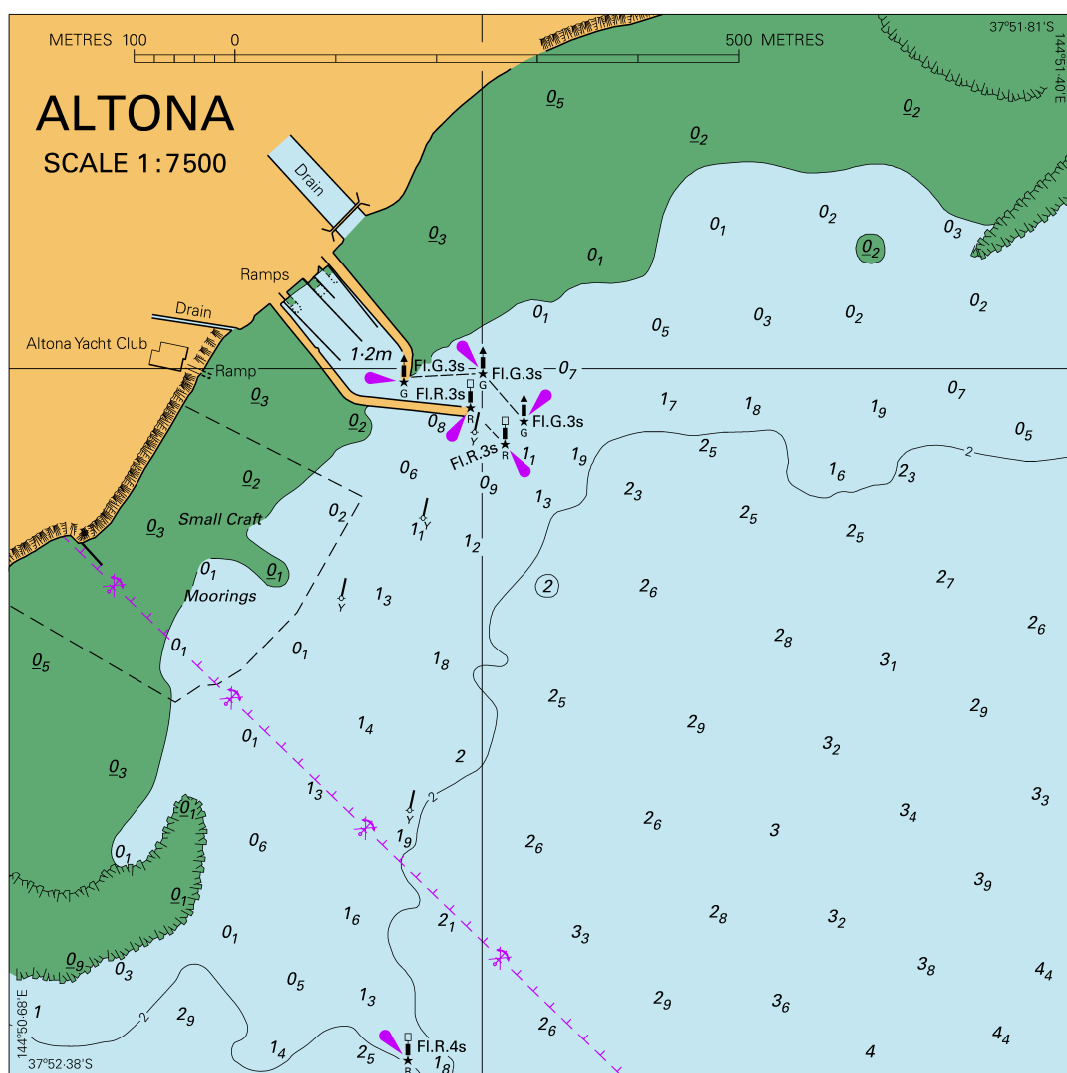


Block A for chart Aus 50

© Commonwealth of Australia 2020

(174.0 x 113.6mm)

To accompany Australian Notice to Mariners 702/2020



Block for chart Aus 155

© Commonwealth of Australia 2020

(140.8 x 140.6mm)