



7 August 2020

Edition 16

# AUSTRALIAN NOTICES TO MARINERS

**Notices 585 - 641**

Published fortnightly by the Australian Hydrographic Office



Australian Notices to Mariners are the authority for correcting charts and publications published by the Australian Hydrographic Office covering Australia, Papua New Guinea, Solomon Islands, Australian Antarctic Territory and Timor-Leste.

Commodore F.T. FREEMAN RAN  
*Hydrographer of Australia*

---

## SECTIONS.

- I. **Australian Notices to Mariners, including blocks and notes.**
- II. **Hydrographic Reports.**

## SUPPLEMENTS.

- I. **Tracings**
- II. **Cumulative List of Australian Notices to Mariners.**
- III. **Cumulative List of Temporary and Preliminary Australian Notices to Mariners.**
- IV. **Temporary and Preliminary Notices in force.**

---

© Commonwealth of Australia 2020

This work is copyright. Apart from any use permitted under the Copyright Act 1968, no part may be reproduced by any process, adapted, communicated or commercially exploited without prior written permission from The Commonwealth represented by the Australian Hydrographic Office.

## IMPORTANT NOTICE

This edition of Notices to Mariners includes all significant information affecting AHO products which the AHO has become aware of since the last edition. All reasonable efforts have been made to ensure the accuracy and completeness of the information, including third party information, on which these updates are based. The AHO regards third parties from which it receives information as reliable, however the AHO cannot verify all such information and errors may therefore exist. The AHO does not accept liability for errors in third party information.

---

## GENERAL INSTRUCTIONS

The substance of these notices should be inserted on the charts affected.

Bearings are referred to the true compass and are reckoned clockwise from North; those relating to lights are given as seen by an observer from seaward.

Positions quoted in notices relate to WGS84 which is the horizontal datum for all charts produced by the Australian Hydrographic Office.

The range quoted for a light is its nominal range.

Depths are with reference to the chart datum of each chart. Heights are above mean high water springs or mean higher high water, as appropriate.

The capital letter (P) or (T) after the number of any notice denotes a preliminary or temporary notice respectively, which are contained separately at the end of the permanent notices.

---

## REPORTING OF DANGERS

Mariners are particularly requested to notify the AUSTRALIAN HYDROGRAPHIC OFFICE, Locked Bag 8801 Wollongong, NSW 2500 (Fax 02-4223 6599, e-mail [datacentre@hydro.gov.au](mailto:datacentre@hydro.gov.au) or, alternatively by filling in and submitting the [Hydrographic Notes](#) forms located on the web site – [www.hydro.gov.au](http://www.hydro.gov.au)), immediately on the discovery of new dangers or suspected dangers to navigation. For changes or defects in aids to navigation notify AusSAR (Fax 02-6230 6868 or email [rccaus@amsa.gov.au](mailto:rccaus@amsa.gov.au)).

---

## AUTHORISED USE

Copies of Australian notices are available free of charge from the Australian Hydrographic Office (AHO) website ([www.hydro.gov.au](http://www.hydro.gov.au)) and through the eNotices (email) service ([www.hydro.gov.au/enotices/enotices.htm](http://www.hydro.gov.au/enotices/enotices.htm)).

Individual Notices may be copied for the purpose of inserting Notice substance on official charts and publications. Paper copies may be printed by chart agents and distributed to customers on a cost recovery basis. Participating chart agents are listed on the AHO website as providing a 'Paper Notices to Mariners' service ([www.hydro.gov.au/webapps/jsp/agents/agents-list.jsp](http://www.hydro.gov.au/webapps/jsp/agents/agents-list.jsp)). Copies of the notices may not be sold for profit without prior written agreement.

## NUMERICAL INDEX OF NOTICES TO MARINERS

### Edition No 16

Notices	Aus Chart, INT Chart, ENC Cell, AHP, BA Pubs
585	Aus 191, 193, 197, 215, 216, 217, 257, 379, PNG 379
586	Aus 51, 148, 196, 208, 222, 280, 281, 297, 332, 386, 548, 651, 755, 802
587	Amendment to Mariner's Handbook for Australian Waters AHP20
588	Aus 204, 806, 807, 808, 809
589	Aus 200, 201
590	Aus 255, 825, 826
591	Aus 238
592	Aus 256
593	Aus 241
594	Aus 258
595	Aus 4
596	Aus 377, 4620, INT 620
597	Aus 841
598	Aus 377, 840
599	Aus 309, 316, 722
600	Aus 115
601	Aus 318, 727
602(T)	Aus 200, 808, 809
603(T)	Aus 197, 200, 808
604(T)	Aus 807, 808
605(T)	Aus 193
606(T)	Aus 207, 208
607(P)	Aus 200, 489, 808, 4620, 4621, 4623, 4634, 4635, 4643, INT 620, 621, 623, 634, 635, 643, PNG 379, 505, 506, 621
608(T)	Aus 197, 200, 379, 489, 621, 808, 4620, 4621, 4623, 4634, 4635, 4643, INT 620, 621, 623, 634, 635, 643, PNG 505, 506
609(P)	Aus 235, 489, 809, 815, 4601, 4602, 4604, 4622, 4623, 4634, 4635, 4643, INT 601, 602, 604, 622, 623, 634, 635, 643, SLB 305
610(T)	Aus 197, 235, 489, 809, 815, 4601, 4602, 4604, 4622, 4623, 4634, 4635, 4643, INT 601, 602, 604, 622, 623, 634, 635, 643, SLB 305
611(T)	Aus 115
612(T)	Aus 244, 245, 271
613(T)	Aus 252, 253, 269
614(T)	Aus 256, 257, 827, 828
615(T)	Aus 256
616(T)	Aus 257
617(T)	Aus 256
618(T)	Aus 257
619(T)	Aus 256, 827
620(T)	Aus 256, 257, 827
621(T)	Aus 256, 257
622(T)	Aus 257
623(T)	Aus 257
624(T)	Aus 256, 257
625(T)	Aus 257
626(T)	Aus 257
627(T)	PNG 653
628(T)	Aus 379, 502, PNG 378
629(T)	PNG 646
630(T)	Aus 521, PNG 644
631(T)	Aus 4621, INT 621, PNG 379, 512, 647
632(T)	Aus 379, 512, 647, 4621, INT 621
633(T)	PNG 547, 674
634(T)	Aus 299
635(T)	Aus 25, 29
636(T)	Aus 50, 323, 324
637(T)	Aus 73, 331
638(T)	Aus 60
639(T)	Aus 113
640(T)	Aus 143, 158
641(P)	Aus 181, 182

# NUMERICAL INDEX OF CHARTS AFFECTED

## Edition No 16

Aus Chart	Notices
Aus 4	595
Aus 25	635(T)
Aus 29	635(T)
Aus 50	636(T)
Aus 51	586
Aus 60	638(T)
Aus 73	637(T)
Aus 113	639(T)
Aus 115	600, 611(T)
Aus 143	640(T)
Aus 148	586
Aus 158	640(T)
Aus 181	641(P)
Aus 182	641(P)
Aus 191	585
Aus 193	585, 605(T)
Aus 196	586
Aus 197	585, 603(T), 608(T), 610(T)
Aus 200	589, 602(T), 603(T), 607(P), 608(T)
Aus 201	589
Aus 204	588
Aus 207	606(T)
Aus 208	586, 606(T)
Aus 215	585
Aus 216	585
Aus 217	585
Aus 222	586
Aus 235	609(P), 610(T)
Aus 238	591
Aus 241	593
Aus 244	612(T)
Aus 245	612(T)
Aus 252	613(T)
Aus 253	613(T)
Aus 255	590
Aus 256	592, 614(T), 615(T), 617(T), 619(T), 620(T), 621(T), 624(T)
Aus 257	585, 614(T), 616(T), 618(T), 620(T), 621(T), 622(T), 623(T), 624(T), 625(T), 626(T)
Aus 258	594
Aus 269	613(T)
Aus 271	612(T)
Aus 280	586
Aus 281	586
Aus 297	586
Aus 299	634(T)
Aus 309	599
Aus 316	599
Aus 318	601
Aus 323	636(T)
Aus 324	636(T)
Aus 331	637(T)
Aus 332	586
Aus 377	596, 598
Aus 379	585, 608(T), 628(T), 632(T)
Aus 386	586

Aus Chart	Notices
Aus 489	607(P), 608(T), 609(P), 610(T)
Aus 502	628(T)
Aus 512	632(T)
Aus 521	630(T)
Aus 548	586
Aus 621	608(T)
Aus 647	632(T)
Aus 651	586
Aus 722	599
Aus 727	601
Aus 755	586
Aus 802	586
Aus 806	588
Aus 807	588, 604(T)
Aus 808	588, 602(T), 603(T), 604(T), 607(P), 608(T)
Aus 809	588, 602(T), 609(P), 610(T)
Aus 815	609(P), 610(T)
Aus 825	590
Aus 826	590
Aus 827	614(T), 619(T), 620(T)
Aus 828	614(T)
Aus 840	598
Aus 841	597
Aus 4601	609(P), 610(T)
Aus 4602	609(P), 610(T)
Aus 4604	609(P), 610(T)
Aus 4620	596, 607(P), 608(T)
Aus 4621	607(P), 608(T), 631(T), 632(T)
Aus 4622	609(P), 610(T)
Aus 4623	607(P), 608(T), 609(P), 610(T)
Aus 4634	607(P), 608(T), 609(P), 610(T)
Aus 4635	607(P), 608(T), 609(P), 610(T)
Aus 4643	607(P), 608(T), 609(P), 610(T)
PNG 378	628(T)
PNG 379	585, 607(P), 631(T)
PNG 505	607(P), 608(T)
PNG 506	607(P), 608(T)
PNG 512	631(T)
PNG 547	633(T)
PNG 621	607(P)
PNG 644	630(T)
PNG 646	629(T)
PNG 647	631(T)
PNG 653	627(T)
PNG 674	633(T)
SLB 305	609(P), 610(T)

INT Chart	Notices
INT 601	609(P), 610(T)
INT 602	609(P), 610(T)

INT Chart	Notices
INT 604	<a href="#">609(P)</a> , <a href="#">610(T)</a>
INT 620	<a href="#">596</a> , <a href="#">607(P)</a> , <a href="#">608(T)</a>
INT 621	<a href="#">607(P)</a> , <a href="#">608(T)</a> , <a href="#">631(T)</a> , <a href="#">632(T)</a>
INT 622	<a href="#">609(P)</a> , <a href="#">610(T)</a>
INT 623	<a href="#">607(P)</a> , <a href="#">608(T)</a> , <a href="#">609(P)</a> , <a href="#">610(T)</a>
INT 634	<a href="#">607(P)</a> , <a href="#">608(T)</a> , <a href="#">609(P)</a> , <a href="#">610(T)</a>
INT 635	<a href="#">607(P)</a> , <a href="#">608(T)</a> , <a href="#">609(P)</a> , <a href="#">610(T)</a>
INT 643	<a href="#">607(P)</a> , <a href="#">608(T)</a> , <a href="#">609(P)</a> , <a href="#">610(T)</a>

**585 AUSTRALIA - Products - New Charts, New Editions, Withdrawn Charts**

Australian Hydrographic Office , UKHO

**New Charts**

<i>Chart</i>	<i>Title and Geographical limits</i>	<i>Scale</i>	<i>Publication Date</i>	<i>Remarks</i>
PNG 379	Papua New Guinea - South Coast - Kerema Bay to Port Moresby 7° 45'·1 S – 10° 33'·0 S 145° 33'·2 E – 147° 20'·0 E	1:300 000	7 August 2020	Adoption of Papua New Guinea chart numbering. Replaces Aus 379. General updating throughout; including new submarine cable.

**New Electronic Navigation Chart (Aus ENC)**

<i>Cell Name</i>	<i>Title</i>	<i>Publication Date</i>	<i>Remarks</i>
AU5LEN01	Australia - Victoria - Lakes Entrance	6 August 2020	AU5182P2 has been withdrawn.

**New Editions and Withdrawn Charts**

<i>Chart</i>	<i>Title</i>	<i>Scale</i>	<i>Publication Date</i>	<i>Remarks</i>
NIL				

**Charts withdrawn**

<i>Chart</i>	<i>Remarks</i>
Aus 379	On publication of new chart PNG 379

**Charts withdrawn without replacement**

<i>Chart</i>	<i>Title</i>	<i>Scale</i>	<i>Publication Date</i>
Aus 191 <b>Edition 1</b>	Australia - East Coast - New South Wales - Plans in New South Wales (Sheet 3) Plans: Bermagui Kiama Batemans Bay Marina Narooma Crookhaven River Entrance Moruya River Entrance Ulladulla Batemans Bay	  1:7 500 1:7 500 1:10 000 1:10 000 1:12 500 1:15 000 1:15 000 1:25 000	20 August 2004
Aus 193 <b>Edition 2</b>	Australia - East Coast - New South Wales - Approaches to Jervis Bay Plans: HMAS Creswell Huskisson	  1:5 000 1:15 000	13 July 2018
Aus 197 <b>Edition 2</b>	Australia - East Coast - New South Wales - Approaches to Port Jackson - Port Hacking to The Skillion	1:75 000	17 August 2001
Aus 215 <b>Edition 1</b>	Australia - East Coast - New South Wales - Pittwater	1:12 500	15 November 2002
Aus 216 <b>Edition 1</b>	Australia - East Coast - New South Wales - Lion Island to Brisbane Water	1:15 000	9 November 2001
Aus 217 <b>Edition 1</b>	Australia - East Coast - New South Wales - Hawkesbury River including Cowan Creek Plan: Cowan Creek	 1:12 500  1:20 000	6 February 2004
Aus 257 <b>Edition 5</b>	Australia - East Coast - Queensland - Townsville Harbour and River Entrance	1:7 500	22 September 2017

**585 AUSTRALIA - Products - New Charts, New Editions, Withdrawn Charts****Admiralty publication**

<i>NP No</i>	<i>Title</i>	<i>Date</i>	<i>Remarks</i>
NP203-21	Admiralty Tide Tables, Volume 3, Indian Ocean (including Tidal Stream Tables). 2021 Edition.	13/8/2020	New Edition 2021.

**Chart permanently withdrawn**

Charts listed above as withdrawn no longer meet chart carriage requirements and should be marked as "superseded" and replaced with the new chart/ new edition listed prior to passage through the area covered by the new chart.

When placing orders with a chart agent between notice of forthcoming edition and its publication, mariners should advise whether their order pertains to the current edition or the new edition.

For further details refer to the AHO website at [www.hydro.gov.au](http://www.hydro.gov.au) for new edition and new chart stock arrival information.

**586 AUSTRALIA - Products - New Charts and New Editions to be published shortly**

Australian Hydrographic Office

**New Charts to be published shortly**

<i>Chart</i>	<i>Title</i>	<i>Scale</i>	<i>Remarks</i>
PNG 386	South Pacific Ocean - Papua New Guinea - New Britain - Cape Cretin to Vitu Islands	1:300 000	Adoption of Papua New Guinea chart numbering. Replaces Aus 386. General updating throughout; including latest bathymetric data.
PNG 548	Papua New Guinea - New Britain - Eleonora Bay to Cape Gloucester	1:150 000	Adoption of Papua New Guinea chart numbering. Replaces Aus 548. General updating throughout; including latest bathymetric data.
PNG 651	Papua New Guinea - North Coast - Approaches to Wewak Plans: Wewak Wharves Wewak Harbour	1:75 000 1:7 500 1:25 000	Adoption of Papua New Guinea chart numbering. Replaces Aus 651. General updating throughout; including latest bathymetric data.

**New Editions to be published shortly**

<i>Chart</i>	<i>Title</i>	<i>Scale</i>	<i>Remarks</i>
Aus 332	Australia - West Coast - Western Australia - Pepper Point to Geraldton	1:300 000	New edition with general updating throughout; including latest bathymetric data.
Aus 755	Australia - West Coast - Western Australia - Cape Peron to Cape Naturaliste	1:150 000	New edition with general updating throughout; including latest bathymetric data.
Aus 802	Australia - South Coast - Victoria - Cape Liptrap to Kent Group	1:150 000	New edition with general updating throughout; including latest bathymetric data.

**Charts to be withdrawn**

<i>Chart</i>	<i>Remarks</i>
Aus 148	On publication of new edition Aus 802
Aus 386	On publication of new edition PNG 386
Aus 548	On publication of new edition PNG 548
Aus 651	On publication of new edition PNG 651

**Charts to be withdrawn without replacement 21 August 2020**

<i>Chart</i>	<i>Title</i>	<i>Scale</i>	<i>Publication Date</i>
Aus 51 <b>Edition 4</b>	Australia - North West Coast - Western Australia - Broome	1:10 000	31 May 2019
Aus 196 <b>Edition 1</b>	Australia - East Coast - New South Wales - Port Botany	1:7 500	7 September 2012
Aus 208 <b>Edition 7</b>	Australia - East Coast - New South Wales - Newcastle Inset: Hunter River (South Arm)	1:7 500 1:10 000	18 May 2012
Aus 297 <b>Edition 1</b>	Torres Strait - Great North East Channel - Basilisk Passage to Moon Passage	1:50 000	7 October 2011



**586 AUSTRALIA - Products - New Charts and New Editions to be published shortly**
**Charts to be withdrawn without replacement 4 September 2020**

<i>Chart</i>	<i>Title</i>	<i>Scale</i>	<i>Publication Date</i>
Aus 222	Australia - East Coast - New South Wales - Clarence River	1:15 000	23 August 2019
<b>Edition 4</b>	Plan: Goodwood Island Wharf	1:6 000	
Aus 280	Australia - East Coast - Queensland - Plans in Queensland		22 February 2019
<b>Edition 5</b>	(Sheet 3) Plans: Maggie Reef to Eden Reef	1:75 000	
	Flinders Group	1:50 000	
Aus 281	Australia - East Coast - Queensland - First Three Mile Opening	1:75 000	22 February 2019
<b>Edition 3</b>	to Cape Direction		

**587 AUSTRALIA - Product - Amendment to Mariner's Handbook for Australian Waters AHP20**  
 Australian Hydrographic Office

Chapter 11 - Western Australia Ports - page 238 - Broome - Pilotage, Pilot Boarding Grounds

*Replace* table with accompanying block

**588 AUSTRALIA - NEW SOUTH WALES - Bermagui to Broken Bay - Charts withdrawn; ZOC diagrams; chart limits; chart notes; chart legends; pipeline; depths; light**

Australian Hydrographic Office

*Note:* position of existing chart notes may vary on certain charts.

**Aus 204 [5/2020]**

Insert	supply pipeline, between	33° 38'.08 S	151° 18'.37 E
		33° 38'.10 S	151° 17'.90 E
		33° 38'.11 S	151° 17'.78 E
		33° 38'.13 S	151° 17'.71 E
		33° 38'.16 S	151° 17'.65 E
	accompanying ZOC diagram	33° 26'.7 S	151° 16'.7 E
	magenta legend, <i>ENC (see Note)</i> , centred on	33° 33'.4 S	151° 21'.6 E
	depth, 10m, enclosed by contour	33° 33'.73 S	151° 18'.96 E
	depth, 9m, and extend contour SE to enclose	33° 34'.07 S	151° 18'.90 E
	depth, 4m, and extend contour S to enclose	33° 34'.39 S	151° 15'.21 E
	magenta legend, <i>ENC (see Note)</i> , centred on	33° 34'.48 S	151° 15'.75 E
	magenta legend, <i>ENC (see Note)</i> , centred on	33° 37'.25 S	151° 18'.64 E
	accompanying note, ELECTRONIC NAVIGATIONAL CHART (ENC)	33° 38'.0 S	151° 05'.3 E
Delete	magenta limits with legend Aus 216, centred on	33° 30'.0 S	151° 21'.0 E
	depth, 11 <sub>5</sub> m	33° 33'.8 S	151° 19'.0 E
	depth, 11m	33° 34'.1 S	151° 18'.8 E
	depth, 7 <sub>3</sub> m	33° 34'.4 S	151° 15'.2 E
	magenta limits with legend Aus 217, centred on	33° 35'.0 S	151° 13'.3 E
	magenta limits with legend Aus 215, centred on	33° 36'.0 S	151° 18'.0 E
	magenta limits with legend Aus 217, centred on	33° 38'.5 S	151° 10'.0 E
	chart note, OMISSIONS FROM CHART	33° 39'.0 S	151° 05'.3 E

**Aus 806 [224/2020]**

Insert	magenta legend, <i>ENC (see Note)</i> , centred on	36° 24'.8 S	150° 06'.0 E
	accompanying ZOC diagram	36° 33'.0 S	149° 55'.0 E
	accompanying note, ELECTRONIC NAVIGATIONAL CHART (ENC)	36° 48'.0 S	149° 52'.0 E
	accompanying note, ESTUARY AND RIVER ENTRANCES	36° 50'.0 S	149° 52'.0 E
Delete	magenta limits with legend, Aus 191, centred on	36° 25'.0 S	150° 04'.5 E

**Aus 807 [302/2020]**

Insert	magenta dashed line with legend, <i>Naval Waters</i> , between	35° 06'.75 S	150° 46'.14 E
		35° 04'.87 S	150° 46'.66 E
	magenta dashed line, with radius 0.5M, with magenta legend,	35° 06'.60 S	150° 48'.14 E
	<i>Unexploded Ordnance (see Note)</i> , centred on		
	accompanying note, UNEXPLODED ORDNANCE (UXO)	35° 08'.6 S	150° 22'.5 E
	magenta legend, <i>ENC (see Note)</i> , centred on	35° 09'.0 S	150° 54'.0 E
	accompanying note, ESTUARY AND RIVER ENTRANCES	35° 12'.6 S	150° 17'.6 E
	accompanying note, ELECTRONIC NAVIGATIONAL CHART (ENC)	35° 13'.0 S	150° 12'.2 E
	accompanying ZOC diagram	35° 19'.0 S	150° 15'.0 E
	magenta legend, <i>ENC (see Note)</i> , centred on	35° 21'.6 S	150° 30'.7 E
	accompanying block	35° 44'.0 S	150° 15'.0 E
	magenta legend, <i>ENC (see Note)</i> , centred on	35° 54'.3 S	150° 11'.8 E
	magenta legend, <i>ENC (see Note)</i> , centred on	36° 12'.6 S	150° 09'.6 E
Delete	anchoring prohibited limit, between	35° 04'.4 S	150° 41'.9 E
		35° 05'.6 S	150° 44'.1 E
		35° 07'.6 S	150° 42'.7 E
	magenta limits with legend Aus 193, centred on	35° 05'.0 S	150° 55'.0 E
	chart note, OMISSIONS FROM CHART	35° 08'.0 S	150° 12'.3 E
	magenta limits with legend Aus 191, centred on	35° 21'.5 S	150° 29'.0 E
	magenta limits with legend Aus 191, centred on	35° 54'.4 S	150° 09'.5 E
	magenta limits with legend Aus 191, centred on	36° 12'.6 S	150° 08'.0 E

**Aus 808 [528/2020]**

Insert	magenta limits with legend, <i>Aus 200</i> , in SE corner, between	33° 47'.00 S	151° 24'.70 E
		33° 54'.50 S	151° 24'.70 E
		33° 54'.50 S	151° 06'.60 E
		33° 50'.80 S	151° 06'.60 E
		33° 50'.80 S	151° 01'.51 E
		33° 48'.80 S	151° 01'.51 E

<b>588 AUSTRALIA - NEW SOUTH WALES - Bermagui to Broken Bay - Charts withdrawn; ZOC diagrams; chart limits; chart notes; chart legends; pipeline; depths; light</b>			
		33° 48'.80 S	151° 06'.60 E
		33° 47'.00 S	151° 06'.60 E
	magenta limits with legend, <i>Aus 198</i> , in SE corner, between	34° 05'.44 S	151° 01'.47 E
		34° 05'.44 S	151° 18'.24 E
		33° 56'.61 S	151° 18'.24 E
		33° 56'.61 S	151° 01'.47 E
		34° 05'.44 S	151° 01'.47 E
	magenta dashed line with legend, <i>Naval Waters</i> , between	35° 06'.75 S	150° 46'.14 E
		35° 04'.87 S	150° 46'.66 E
	accompanying note, UNEXPLODED ORDNANCE (UXO)	33° 57'.0 S	150° 59'.3 E
	accompanying note, ESTUARY AND RIVER ENTRANCES	34° 00'.0 S	150° 43'.7 E
	accompanying note, ELECTRONIC NAVIGATIONAL CHART (ENC)	34° 03'.0 S	150° 55'.0 E
	accompanying ZOC diagram	34° 11'.5 S	150° 46'.5 E
	magenta legend, <i>ENC (see Note)</i> , centred on	34° 34'.60 S	150° 55'.40 E
	magenta legend, <i>ENC (see Note)</i> , centred on	34° 39'.60 S	150° 52'.60 E
	magenta legend, <i>ENC (see Note)</i> , centred on	34° 52'.3 S	150° 47'.8 E
	magenta dashed line, with radius 0.5M, with magenta legend, <i>Unexploded Ordnance (see Note)</i> , centred on	35° 06'.60 S	150° 48'.14 E
	magenta legend, <i>ENC (see Note)</i> , centred on	35° 09'.0 S	150° 54'.0 E
Amend	light to <i>Oc.WR.12/9M</i>	34° 04'.2 S	151° 09'.4 E
Delete	anchoring prohibited limit, between	35° 04'.4 S	150° 41'.9 E
		35° 05'.6 S	150° 44'.1 E
		35° 07'.6 S	150° 42'.7 E
	magenta limits with legend <i>Aus 197</i> , centred on	33° 56'.0 S	151° 24'.0 E
	magenta limits with legend see <i>Plan</i> , centred on	34° 35'.0 S	150° 53'.6 E
	magenta limits with legend <i>Aus 191</i> , centred on	34° 40'.2 S	150° 51'.8 E
	magenta limits with legend <i>Aus 191</i> , centred on	34° 54'.2 S	150° 45'.5 E
	magenta limits with legend <i>Aus 193</i> , centred on	35° 05'.0 S	150° 55'.0 E
<b>Aus 808 (Bass Point) [528/2020]</b>			
Delete	plan, BASS POINT	34° 35'.0 S	150° 53'.6 E
<b>Aus 809 [335/2020]</b>			
Insert	magenta limits with legend, <i>Aus 200</i> , in NE corner, between	33° 54'.00 S	151° 24'.70 E
		33° 45'.66 S	151° 24'.70 E
		33° 45'.66 S	151° 15'.00 E
	magenta limits with legend, <i>Aus 204</i> , in NE corner, between	33° 39'.91 S	151° 15'.00 E
		33° 39'.91 S	151° 31'.23 E
		33° 25'.77 S	151° 31'.23 E
		33° 25'.77 S	151° 15'.00 E
	magenta legend, <i>ENC (see Note)</i> , centred on	33° 04'.8 S	151° 41'.6 E
	magenta legend, <i>ENC (see Note)</i> , centred on	33° 08'.6 S	151° 40'.0 E
	accompanying note, ELECTRONIC NAVIGATIONAL CHART (ENC)	33° 10'.0 S	151° 26'.7 E
	accompanying ZOC diagram	33° 11'.0 S	151° 20'.0 E
	accompanying note, ESTUARY AND RIVER ENTRANCES	33° 12'.6 S	151° 27'.0 E
Delete	magenta limits with legend, see <i>Plan</i> , centred on	33° 05'.0 S	151° 39'.5 E
	magenta limits with legend, see <i>Plan</i> , centred on	33° 09'.5 S	151° 37'.9 E
	magenta limits with legend, <i>Aus 197</i> , centred on	33° 38'.0 S	151° 27'.0 E
<b>Aus 809 (Lake Macquarie Entrance) [335/2020]</b>			
Delete	plan, LAKE MACQUARIE ENTRANCE	33° 05'.0 S	151° 39'.5 E
<b>Aus 809 (Catherine Hill Bay) [335/2020]</b>			
Delete	plan, CATHERINE HILL BAY	33° 09'.5 S	151° 37'.9 E
<b>589 AUSTRALIA - NEW SOUTH WALES - Port Jackson - Grotto Point - Light</b>			
Port Authority of New South Wales			
<b>Aus 200 [411/2020]</b>			
Amend	light to <i>Oc.WRG.4s 18m 12/9M</i>	33° 49'.07 S	151° 15'.69 E
<b>Aus 201 [577/2019]</b>			
Amend	light to <i>Oc.WRG.4s 18m 12/9M</i>	33° 49'.07 S	151° 15'.69 E

**590 AUSTRALIA - QUEENSLAND - Abbot Point - Anchorages**  
Maritime Safety Queensland Notice 254/2020

**Aus 255 [505/2020]**

Insert	anchor berth, desig 7, with 750m radius swinging circle centred on	19° 43'.5 S	148° 04'.6 E
	anchor berth, desig 9, with 750m radius swinging circle centred on	19° 43'.5 S	148° 08'.6 E
	anchor berth, desig 8, with 750m radius swinging circle centred on	19° 43'.5 S	148° 06'.6 E
	anchor berth, desig 10, with 750m radius swinging circle centred on	19° 45'.0 S	148° 06'.2 E
	anchor berth, desig 12, with 750m radius swinging circle centred on	19° 45'.0 S	148° 10'.2 E
	anchor berth, desig 11, with 750m radius swinging circle centred on	19° 45'.0 S	148° 08'.2 E
	anchor berth, desig 14, with 750m radius swinging circle centred on	19° 46'.5 S	148° 07'.8 E
	anchor berth, desig 15, with 750m radius swinging circle centred on	19° 46'.5 S	148° 09'.8 E

**Aus 825 [379/2019]**

Insert	anchor berth, desig 13, with 0.4M radius swinging circle centred on	19° 45'.0 S	148° 12'.2 E
	anchor berth, desig 17, with 0.4M radius swinging circle centred on	19° 46'.5 S	148° 13'.8 E

**Aus 826 [931/2019]**

Insert	anchor berth, desig 1, with 0.4M radius swinging circle centred on	19° 40'.5 S	148° 01'.6 E
	anchor berth, desig 2, with 0.4M radius swinging circle centred on	19° 40'.5 S	148° 03'.6 E
	anchor berth, desig 3, with 0.4M radius swinging circle centred on	19° 40'.5 S	148° 05'.6 E
	anchor berth, desig 4, with 0.4M radius swinging circle centred on	19° 42'.0 S	148° 03'.0 E
	anchor berth, desig 5, with 0.4M radius swinging circle centred on	19° 42'.0 S	148° 05'.0 E
	anchor berth, desig 6, with 0.4M radius swinging circle centred on	19° 42'.0 S	148° 07'.0 E
	anchor berth, desig 7, with 0.4M radius swinging circle centred on	19° 43'.5 S	148° 04'.6 E
	anchor berth, desig 8, with 0.4M radius swinging circle centred on	19° 43'.5 S	148° 06'.6 E
	anchor berth, desig 9, with 0.4M radius swinging circle centred on	19° 43'.5 S	148° 08'.6 E
	anchor berth, desig 10, with 0.4M radius swinging circle centred on	19° 45'.0 S	148° 06'.2 E
	anchor berth, desig 11, with 0.4M radius swinging circle centred on	19° 45'.0 S	148° 08'.2 E
	anchor berth, desig 12, with 0.4M radius swinging circle centred on	19° 45'.0 S	148° 10'.2 E
	anchor berth, desig 13, with 0.4M radius swinging circle centred on	19° 45'.0 S	148° 12'.2 E
	anchor berth, desig 14, with 0.4M radius swinging circle centred on	19° 46'.5 S	148° 07'.8 E
	anchor berth, desig 15, with 0.4M radius swinging circle centred on	19° 46'.5 S	148° 09'.8 E
	anchor berth, desig 16, with 0.4M radius swinging circle centred on	19° 46'.5 S	148° 11'.8 E
	anchor berth, desig 17, with 0.4M radius swinging circle centred on	19° 46'.5 S	148° 13'.8 E
	anchor berth, desig 18, with 0.4M radius swinging circle centred on	19° 48'.0 S	148° 11'.4 E

**591 AUSTRALIA - QUEENSLAND - Brisbane River - Quarries Reach - Lead lights amended**  
Maritime Safety Queensland Notice 228/2020

**Aus 238 [365/2020]**

Insert	accompanying block A	27° 27'.0 S	153° 05'.0 E
--------	----------------------	-------------	--------------

**Aus 238 (Hamilton Reach) [365/2020]**

Insert	accompanying block B	27° 27'.0 S	153° 05'.0 E
--------	----------------------	-------------	--------------

**592 AUSTRALIA - QUEENSLAND - Cleveland Bay - Chart withdrawn; plans withdrawn; ZOC diagram; chart notes**

Australian Hydrographic Office

Note: position of existing chart notes may vary on certain charts.

**Aus 256 [274/2020]**

Insert	magenta legend, <i>ENC (see Note)</i> , centred on	19° 07'.1 S	146° 54'.0 E
	magenta legend, <i>ENC (see Note)</i> , centred on	19° 09'.7 S	146° 52'.1 E
	accompanying block	19° 15'.0 S	146° 50'.0 E
	accompanying note, DREDGED AREAS	19° 16'.8 S	146° 41'.4 E
	magenta legend, <i>ENC (see Note)</i> , centred on	19° 16'.9 S	147° 03'.4 E
	accompanying note, ELECTRONIC NAVIGATIONAL CHART (ENC)	19° 17'.2 S	146° 41'.4 E
	accompanying ZOC diagram	19° 17'.5 S	146° 44'.3 E
Delete	magenta limits with legend, see Plan, centred on	19° 09'.7 S	146° 51'.3 E
	note, OMISSIONS FROM CHART	19° 16'.0 S	146° 39'.7 E
	magenta limits with legend, see Plan, centred on	19° 16'.6 S	147° 03'.5 E

**Aus 256 (Cape Ferguson) [274/2020]**

Delete	plan, CAPE FERGUSON	19° 16'.6 S	147° 03'.5 E
--------	---------------------	-------------	--------------

**Aus 256 (Nelly Bay) [274/2020]**

Delete	plan, NELLY BAY	19° 09'.7 S	146° 51'.3 E
--------	-----------------	-------------	--------------

**593 AUSTRALIA - QUEENSLAND - Great Sandy Strait - Mary River - Heath Reach - Light buoy**

Maritime Safety Queensland Notice 260/2020

**Aus 241 [532/2020]**

Move	light buoy	25° 30'.5 S	152° 46'.9 E
	to	25° 30'.41 S	152° 47'.01 E

**594 AUSTRALIA - QUEENSLAND - Mourilyan Harbour - Mooring buoys**

Maritime Safety Queensland

**Aus 258 (Mourilyan Harbour) [1138/2019]**

Insert	red cylindrical mooring buoy, <i>Fl. Y. 2.5s</i>	17° 36'.00 S	146° 07'.35 E
	red cylindrical mooring buoy, <i>Fl. Y. 2.5s</i>	17° 36'.00 S	146° 07'.37 E

**595 AUSTRALIA - QUEENSLAND - Weipa - Depths**

Maritime Safety Queensland

**Aus 4 [1140/2019]**

Insert	depth, <i>8<sub>5</sub>m</i> , enclosed by contour	12° 38'.61 S	141° 38'.81 E
	depth, <i>9<sub>5</sub>m</i> , enclosed by contour	12° 39'.83 S	141° 38'.75 E
	depth, <i>9<sub>6</sub>m</i> , enclosed by contour	12° 40'.04 S	141° 39'.32 E

**Aus 4 (Weipa) [1140/2019]**

Insert	contour, between	12° 40'.385 S	141° 52'.320 E
		12° 40'.420 S	141° 52'.330 E
		12° 40'.416 S	141° 52'.375 E
Replace	depth, <i>8<sub>7</sub>m</i> , with depth, <i>8m</i>	12° 39'.92 S	141° 50'.94 E
Delete	contour, between	12° 40'.39 S	141° 52'.32 E
		12° 40'.42 S	141° 52'.38 E

**596 PAPUA NEW GUINEA - Kerema Bay to Port Moresby - Chart name**  
Australian Hydrographic Office

**Aus 377 [338/2020]**

Amend	legend to <i>Adjoining Chart PNG 379</i> in E border	9° 45'.0 S	146° 23'.8 E
-------	--	------------	--------------

**Aus 4620 (INT 620) [96/2020]**

Amend	legend to <i>PNG 379</i>	10° 31'.5 S	147° 14'.0 E
-------	--------------------------	-------------	--------------

**597 PAPUA NEW GUINEA - Saibai Island - Depths**  
HMAS Shepparton

**Aus 841 [772/2019]**

Insert	drying height, $0_6m$ , enclosed by contour	9° 22'.40 S	142° 37'.17 E
	depth, $4_9m$ , enclosed by contour	9° 25'.12 S	142° 34'.66 E

Delete	depth, $6_3m$	9° 25'.3 S	142° 34'.7 E
--------	---------------	------------	--------------

**598 AUSTRALIA - TORRES STRAIT - Campbell Island - Depth**  
European Space Agency

**Aus 377 [596/2020]**

Insert	depth, $6_5m$ , enclosed by contour	9° 33'.45 S	143° 32'.22 E
--------	-------------------------------------	-------------	---------------

**Aus 840 [371/2020]**

Replace	depth, $25_5m$ , with depth, $6_5m$ , enclosed by contour	9° 33'.4 S	143° 32'.3 E
---------	---	------------	--------------

**599 AUSTRALIA - NORTHERN TERRITORY - Beagle Gulf - South Gutter - Wreck**  
Precision Hydrographic Services

**Aus 309 [478/2020]**

Insert	depth, $29m$ , enclosed by danger circle with legend, <i>Wk</i>	12° 14'.8 S	130° 36'.9 E
--------	---	-------------	--------------

**Aus 316 [538/2020]**

Insert	depth, $29m$ , enclosed by danger circle with legend, <i>Wk</i>	12° 14'.8 S	130° 36'.9 E
--------	---	-------------	--------------

**Aus 722 [478/2020]**

Replace	depth, $32m$ , with depth, $29m$ , enclosed by danger circle with legend, <i>Wk</i>	12° 14'.8 S	130° 36'.9 E
---------	---	-------------	--------------

**600 AUSTRALIA - WESTERN AUSTRALIA - Bunbury - Koombana Bay - Light buoys**  
Department of Transport WA Notice WA776/10/2020

**Aus 115 (Bunbury) [372/2020]**

Delete	light buoy	33° 18'.45 S	115° 38'.73 E
	light buoy	33° 18'.48 S	115° 38'.70 E
	light buoy	33° 18'.51 S	115° 38'.66 E
	light buoy	33° 18'.54 S	115° 38'.65 E
	light buoy	33° 18'.56 S	115° 38'.63 E
	light buoy	33° 18'.59 S	115° 38'.62 E
	light buoy	33° 18'.62 S	115° 38'.60 E
	light buoy	33° 18'.65 S	115° 38'.59 E

**601 AUSTRALIA - WESTERN AUSTRALIA - Koolama Bay - Depths**G Robinson, MV *Silver Discoverer***Aus 318** [1203/2019]

Insert	depth, 10 <sub>6</sub> m, and extend contour N to enclose	13° 54'.54 S	127° 18'.31 E
--------	---	--------------	---------------

Replace	depth, 8 <sub>1</sub> m, with depth, 6 <sub>9</sub> m	13° 55'.9 S	127° 19'.2 E
---------	---	-------------	--------------

Delete	depth, 13m	13° 55'.1 S	127° 17'.9 E
--------	------------	-------------	--------------

**Aus 727** [1203/2019]

Insert	accompanying block	13° 57'.0 S	127° 17'.5 E
--------	--------------------	-------------	--------------

**602(T)/2020 AUSTRALIA - NEW SOUTH WALES - Ben Buckler - Scientific instruments southeastwards**  
Sydney Institute of Marine Science

Subsurface scientific instruments exist as follows:

<i>Position</i>	<i>Metres below surface</i>
33° 53'.74 S 151° 17'.30 E	27
33° 53'.91 S 151° 17'.75 E	41
33° 54'.16 S 151° 18'.18 E	58
33° 54'.42 S 151° 18'.60 E	63
33° 54'.69 S 151° 19'.06 E	64
33° 54'.95 S 151° 19'.52 E	64
33° 55'.21 S 151° 19'.94 E	71
33° 55'.46 S 151° 20'.37 E	70
33° 55'.71 S 151° 20'.79 E	80
33° 55'.98 S 151° 21'.25 E	80
33° 56'.24 S 151° 21'.71 E	82
33° 56'.49 S 151° 22'.16 E	87
33° 56'.75 S 151° 22'.59 E	90
33° 57'.06 S 151° 23'.02 E	98
33° 57'.32 S 151° 23'.47 E	119
33° 57'.84 S 151° 24'.32 E	127
34° 01'.16 S 151° 29'.70 E	145
34° 01'.46 S 151° 30'.18 E	149.

**Chart temporarily affected - Aus 200 - Aus 808 - Aus 809**

**603(T)/2020 AUSTRALIA - NEW SOUTH WALES - Ben Buckler - Scientific instruments southeastwards**  
*Former Notice - 909(T)/2017 is cancelled*  
Sydney Institute of Marine Science

Cancel this notice on receipt.

**Chart formerly affected - Aus 197 - Aus 200 - Aus 808**

**604(T)/2020 AUSTRALIA - NEW SOUTH WALES - Jervis Bay - Hyams Beach - Light buoy**  
Australian Maritime Warfare Centre

A special light buoy, *Fl. Y. 5s*, exists in position 35° 06'.23 S 150° 42'.85 E.

**Chart temporarily affected - Aus 807 - Aus 808**

**605(T)/2020 AUSTRALIA - NEW SOUTH WALES - Jervis Bay - Hyams Beach - Light buoy**  
*Former Notice - 871(T)/2018 is cancelled*  
Australian Maritime Warfare Centre

Cancel this notice on receipt.

**Chart formerly affected - Aus 193**

**606(T)/2020 AUSTRALIA - NEW SOUTH WALES - Newcastle - Scientific instrument recovered**  
*Former Notice - 1324(T)/2019 is cancelled*  
Haskoning Australia

Cancel this notice on receipt.

**Chart formerly affected - Aus 207 - Aus 208**



**607(P)/2020 AUSTRALIA - NEW SOUTH WALES - PAPUA NEW GUINEA - SOLOMON ISLANDS - Submarine cable**  
33 Below Pty Ltd

A submarine cable exists between the following positions:

9° 30'.11 S 147° 10'.21 E  
10° 44'.26 S 147° 41'.80 E  
15° 00'.71 S 153° 28'.18 E  
22° 03'.78 S 155° 56'.03 E  
27° 11'.16 S 155° 58'.74 E  
27° 13'.80 S 155° 59'.08 E  
29° 00'.17 S 156° 46'.65 E  
31° 27'.48 S 156° 41'.51 E  
32° 14'.08 S 155° 21'.76 E  
34° 04'.85 S 154° 18'.99 E  
34° 29'.36 S 153° 13'.74 E  
34° 31'.95 S 152° 18'.46 E  
34° 23'.78 S 151° 49'.19 E  
33° 54'.33 S 151° 16'.55 E;  
and  
9° 52'.00 S 159° 03'.00 E  
10° 07'.33 S 158° 37'.49 E  
11° 00'.19 S 158° 15'.24 E  
15° 02'.89 S 153° 29'.50 E.

Charts will be updated in due course.

Mariners are advised to navigate with caution in the area.

**Chart which will be affected - Aus 200 - Aus 489 - Aus 808 - Aus 4620 (INT 620) - Aus 4621 (INT 621) - Aus 4623 (INT 623) - Aus 4634 (INT 634) - Aus 4635 (INT 635) - Aus 4643 (INT 643) - PNG 379 - PNG 505 - PNG 506 - PNG 621**

**608(T)/2020 AUSTRALIA - NEW SOUTH WALES - PAPUA NEW GUINEA - SOLOMON ISLANDS - Submarine cable**  
*Former Notice - 164(P)/2020 is cancelled*  
33 Below Pty Ltd

Cancel this notice on receipt.

**Chart formerly affected - Aus 197 - Aus 200 - Aus 379 - Aus 489 - Aus 621 - Aus 808 - Aus 4620 (INT 620) - Aus 4621 (INT 621) - Aus 4623 (INT 623) - Aus 4634 (INT 634) - Aus 4635 (INT 635) - Aus 4643 (INT 643) - PNG 505 - PNG 506**

**609(P)/2020 AUSTRALIA - NEW SOUTH WALES - Sydney - Maroochydore - SOLOMON ISLANDS - Submarine cable**  
33 Below Pty Ltd

A submarine cable exists between the following positions:

2° 12'.0 S 156° 20'.0 E  
11° 21'.9 S 163° 38'.8 E  
19° 13'.8 S 159° 28'.9 E  
25° 20'.8 S 160° 15'.7 E  
26° 55'.1 S 157° 57'.9 E  
32° 00'.9 S 154° 50'.8 E  
32° 47'.6 S 154° 44'.5 E  
34° 05'.2 S 153° 01'.0 E  
33° 46'.6 S 152° 07'.2 E  
33° 43'.3 S 151° 18'.0 E  
and  
26° 55'.0 S 157° 57'.9 E  
26° 15'.6 S 156° 39'.3 E  
26° 09'.3 S 153° 50'.2 E  
26° 39'.5 S 153° 06'.7 E.

Charts will be updated in due course.

Mariners are advised to navigate with caution in the area.

**Chart which will be affected - Aus 235 - Aus 489 - Aus 809 - Aus 815 - Aus 4601 (INT 601) - Aus 4602 (INT 602) - Aus 4604 (INT 604) - Aus 4622 (INT 622) - Aus 4623 (INT 623) - Aus 4634 (INT 634) - Aus 4635 (INT 635) - Aus 4643 (INT 643) - SLB 305**

**610(T)/2020 AUSTRALIA - NEW SOUTH WALES - Sydney - Maroochydore - SOLOMON ISLANDS - Submarine cable**  
*Former Notice - 201(P)/2020 is cancelled*  
 33 Below Pty Ltd

Cancel this notice on receipt.

**Chart formerly affected - Aus 197 - Aus 235 - Aus 489 - Aus 809 - Aus 815 - Aus 4601 (INT 601) - Aus 4602 (INT 602) - Aus 4604 (INT 604) - Aus 4622 (INT 622) - Aus 4623 (INT 623) - Aus 4634 (INT 634) - Aus 4635 (INT 635) - Aus 4643 (INT 643) - SLB 305**

**611(T)/2020 AUSTRALIA - QUEENSLAND - Bunbury - Koombana Bay - Shoaling disproved**  
*Former Notice - 596(P)/2019 is cancelled*  
 Rohde Nielsen Dredging

Cancel this notice on receipt.

**Chart formerly affected - Aus 115**

**612(T)/2020 AUSTRALIA - QUEENSLAND - Gladstone - Clinton Channel - Light buoys**  
*Former Notice - 384(T)/2020 is cancelled*  
 Maritime Safety Queensland Notice 17/2020, 267(T)/2020, 268(T)/2020

A starboard lateral pillar light buoy, *Fl.G.4s*, exists in position 23° 49'.18 S 151° 14'.83 E.

A west cardinal pillar light buoy, *VQ(9)10s*, exists in position 23° 49'.00 S 151° 14'.64 E.

**Chart temporarily affected - Aus 244 - Aus 245 - Aus 271**

**613(T)/2020 AUSTRALIA - QUEENSLAND - Shute Harbour - Obstruction**  
 Maritime Safety Queensland Notice 264(T)/2020

An obstruction marked by a special light buoy, *Fl.Y.3s*, exists in position 20° 18'.09 S 148° 47'.22 E.

**Chart temporarily affected - Aus 252 - Aus 253 - Aus 269**

**614(T)/2020 AUSTRALIA - QUEENSLAND - Townsville - Obstructions**  
*Former Notice - 344(T)/2019 is cancelled*  
 Maritime Safety Queensland Notice 38(T)/2019

Cancel this notice on receipt.

**Chart formerly affected - Aus 256 - Aus 257 - Aus 827 - Aus 828**

**615(T)/2020 AUSTRALIA - QUEENSLAND - Townsville - Ross River - Obstruction; light buoy**  
 Maritime Safety Queensland Notice 212(T)/2020

An obstruction marked by a special buoy exists in position 19° 15'.78 S 146° 50'.41 E.

**Chart temporarily affected - Aus 256**

**616(T)/2020 AUSTRALIA - QUEENSLAND - Townsville - Ross River - Obstruction; light buoy**  
*Former Notice - 491(T)/2020 is cancelled*  
 Maritime Safety Queensland Notice 212(T)/2020

Cancel this notice on receipt.

**Chart formerly affected - Aus 257**

**617(T)/2020 AUSTRALIA - QUEENSLAND - Townsville - Harbour works**

Maritime Safety Queensland Notice 125(T)/2020

A barge is conducting pile driving works between berth No 9 (19° 15'.08 S 146° 49'.91 E) and berth No 10 (19° 15'.04 S 146° 49'.86 E).

Mariners are advised to keep clear and navigate with caution in the area.

**Chart temporarily affected - Aus 256**

**618(T)/2020 AUSTRALIA - QUEENSLAND - Townsville - Harbour works**

Former Notice - 353(T)/2020 is cancelled

Maritime Safety Queensland Notice 125(T)/2020

Cancel this notice on receipt.

**Chart formerly affected - Aus 257**

**619(T)/2020 AUSTRALIA - QUEENSLAND - Townsville - Harbour works**

Maritime Safety Queensland Notice 71(T)/2020

Harbour works associated with the construction of a rock wall are in progress in an area bounded by the following:

<i>Position</i>	<i>Remarks</i>
19° 14'.84 S 146° 50'.43 E	special light beacon, <i>Fl. Y. 4s C1</i>
19° 14'.70 S 146° 50'.51 E	special light buoy, <i>Fl. Y. 4s C2</i>
19° 14'.58 S 146° 50'.62 E	special light buoy, <i>Fl. Y. 4s S1</i>
19° 14'.81 S 146° 50'.84 E	special light buoy, <i>Fl. Y. 4s C4</i>
19° 15'.08 S 146° 51'.04 E	special light buoy, <i>Fl. Y. 4s S2</i>
19° 15'.22 S 146° 50'.94 E	special light buoy, <i>Fl. Y. 4s C6</i>
19° 15'.34 S 146° 50'.83 E	special light buoy, <i>Fl. Y. 4s C7</i>

Uncharted rocks resulting from the works will present a hazard to navigation in the area.

Mariners are advised not to anchor within or navigate through the area.

**Chart temporarily affected - Aus 256 - Aus 827**

**620(T)/2020 AUSTRALIA - QUEENSLAND - Townsville - Harbour works**

Former Notice - 206(T)/2020 is cancelled

Maritime Safety Queensland Notice 71(T)/2020

Cancel this notice on receipt.

**Chart formerly affected - Aus 256 - Aus 257 - Aus 827**

**621(T)/2020 AUSTRALIA - QUEENSLAND - Townsville - Dredging operations completed**

Former Notice - 431(T)/2020 is cancelled

Maritime Safety Queensland

Cancel this notice on receipt.

**Chart formerly affected - Aus 256 - Aus 257**

**622(T)/2020 AUSTRALIA - QUEENSLAND - Townsville - Ross River - Dredging operations completed**

Former Notice - 837(T)/2019 is cancelled

Maritime Safety Queensland

Cancel this notice on receipt.

**Chart formerly affected - Aus 257**

**623(T)/2020 AUSTRALIA - QUEENSLAND - Townsville - Wreck salvaged; light buoy removed**

*Former Notice* - 493(T)/2019 is cancelled  
Maritime Safety Queensland

Cancel this notice on receipt.

**Chart formerly affected - Aus 257**

**624(T)/2020 AUSTRALIA - QUEENSLAND - Townsville - Cleveland Bay - Obstruction removed**

*Former Notice* - 445(T)/2019 is cancelled  
Maritime Safety Queensland

Cancel this notice on receipt.

**Chart formerly affected - Aus 256 - Aus 257**

**625(T)/2020 AUSTRALIA - QUEENSLAND - Townsville - Breakwater Marina Channel - Obstruction removed**

*Former Notice* - 126(T)/2019 is cancelled  
Maritime Safety Queensland

Cancel this notice on receipt.

**Chart formerly affected - Aus 257**

**626(T)/2020 AUSTRALIA - QUEENSLAND - Townsville - Cleveland Bay - Obstruction removed**

*Former Notice* - 76(T)/2019 is cancelled  
Maritime Safety Queensland

Cancel this notice on receipt.

**Chart formerly affected - Aus 257**

**627(T)/2020 PAPUA NEW GUINEA - Finschhafen - Light beacon relit**

*Former Notice* - 566(T)/2020 is cancelled  
National Maritime Safety Authority PNG Coastal Navigation Warning 28/2020

Cancel this notice on receipt.

**Chart formerly affected - PNG 653**

**628(T)/2020 PAPUA NEW GUINEA - Kerema Bay - Cable laying operations completed**

*Former Notice* - 1059(T)/2019 is cancelled  
Australian Maritime Safety Authority

Cancel this notice on receipt.

**Chart formerly affected - Aus 379 - Aus 502 - PNG 378**

**629(T)/2020 PAPUA NEW GUINEA - Madang Harbour - Biliau Island - Light beacon relit**

*Former Notice* - 568(T)/2020 is cancelled  
National Maritime Safety Authority PNG Coastal Navigation Warning 29/2020

Cancel this notice on receipt.

**Chart formerly affected - PNG 646**

**630(T)/2020 PAPUA NEW GUINEA - Oro Bay - Light unlit**

National Maritime Safety Authority PNG Coastal Navigation Warning 31/2020

The front lead light, *Fl.3s 119m 10M* (8° 54'.19 S 148° 28'.38 E), is unlit.**Chart temporarily affected - Aus 521 - PNG 644****631(T)/2020 PAPUA NEW GUINEA - Pananiu Island to Boera Head - Lights unlit**

National Maritime Safety Authority PNG Warning 5/2019, 6/2019

The following lights are unlit;

<i>Position</i>	<i>Remarks</i>
10° 47'.21 S 152° 00'.44 E	<i>Fl.4s 16m 10M</i>
9° 23'.39 S 147° 00'.85 E	<i>Fl.2.5s 33m 10M.</i>

**Chart temporarily affected - Aus 4621 (INT 621) - PNG 379 - PNG 512 - PNG 647****632(T)/2020 PAPUA NEW GUINEA - Pananiu Island to Boera Head - Lights unlit***Former Notice* - 183(T)/2019 is cancelled

National Maritime Safety Authority PNG Warning 5/2019, 6/2019

Cancel this notice on receipt.

**Chart formerly affected - Aus 379 - Aus 512 - Aus 647 - Aus 4621 (INT 621)****633(T)/2020 PAPUA NEW GUINEA - Stettin Bay - Grabo Reef - Light beacon unlit**

National Maritime Safety Authority PNG Coastal Navigation Warning 30/2020

The light beacon, *Fl(3)12s 7m 10M No1* (5° 28'.70 S 150° 12'.65 E), is unlit.**Chart temporarily affected - PNG 547 - PNG 674****634(T)/2020 AUSTRALIA - TORRES STRAIT - Hammond Island - Bruce Point - Harbour works; dredging completed***Former Notice* - 878(T)/2017 is cancelled

Maritime Safety Queensland

Cancel this notice on receipt.

**Chart formerly affected - Aus 299****635(T)/2020 AUSTRALIA - NORTHERN TERRITORY - Darwin - Middle Ground - Light buoy off station**

Department of Infrastructure, Planning and Logistics NT Notice 32(T)/2020

The special light buoy, Q.Y (12° 23'.39 S 130° 46'.28 E), is off station.

**Chart temporarily affected - Aus 25 - Aus 29**

**636(T)/2020 AUSTRALIA - WESTERN AUSTRALIA - Broome - Survey operations**  
EGS Survey Pty Ltd

On or about the 12th August

MV *Bhagwan K* is conducting a survey in an area bounded by the following positions:

17° 17'.0 S 122° 03'.0 E  
17° 30'.4 S 122° 05'.1 E  
17° 32'.5 S 122° 05'.1 E  
17° 34'.4 S 122° 05'.6 E  
17° 34'.4 S 122° 04'.5 E  
17° 40'.0 S 122° 05'.0 E  
17° 55'.1 S 122° 10'.0 E  
17° 58'.3 S 122° 09'.5 E  
17° 58'.1 S 122° 05'.3 E  
17° 45'.8 S 122° 01'.2 E  
17° 17'.0 S 121° 59'.0 E.

Special spar light buoys, *Fl. Y.3-2s*, marking tide cage equipment exist in the following positions:

17° 16'.3 S 122° 01'.9 E  
17° 39'.6 S 122° 07'.0 E  
17° 50'.5 S 122° 00'.9 E.

A special conical light buoy, *Fl. Y.3-2s*, will be moved between these positions throughout the survey.

Mariners are advised to navigate with caution in the area.

**Chart temporarily affected - Aus 50 - Aus 323 - Aus 324**

**637(T)/2020 AUSTRALIA - WESTERN AUSTRALIA - Carnarvon - Light restored**

*Former Notice - 1020(T)/2019 is cancelled*  
Department of Transport WA

Cancel this notice on receipt.

**Chart formerly affected - Aus 73 - Aus 331**

**638(T)/2020 AUSTRALIA - WESTERN AUSTRALIA - Dampier - Parker Point - Light beacon destroyed**

Pilbara Ports Authority Notice D15(T)/2020

The port lateral light beacon, *Fl. R.3s 10E* (20° 38'.11 S 116° 42'.51 E), has been destroyed; a special light buoy, *Fl. Y.4s*, exists in situ.

**Chart temporarily affected - Aus 60**

**639(T)/2020 AUSTRALIA - WESTERN AUSTRALIA - Fremantle - Harbour works**

Fremantle Ports Notice 7/2020

Maintenance works are in progress at Victoria Quay berth B (32° 03'.19 S 115° 44'.47 E) and berth C (32° 03'.12 S 115° 44'.57 E).

The berths will be closed during the works.

An exclusion zone exists in an area 2m north of the wharf face.

All hazards are marked by flashing yellow lights.

Mariners are advised to navigate with caution in the area.

**Chart temporarily affected - Aus 113**

**640(T)/2020 AUSTRALIA - VICTORIA - Port Phillip - Mud Islands - Light buoy northeastwards restored**

*Former Notice* - 467(T)/2020 is cancelled  
 Parks Victoria Notice 220/2020

Cancel this notice on receipt.

**Chart formerly affected - Aus 143 - Aus 158****641(P)/2020 AUSTRALIA - VICTORIA - Port Welshpool to McLoughlins Entrance - Shoaling**

*Former Notice* - 579(P)/2020 is cancelled  
 Gippsland Ports

Latest survey shows shoaling and channel realignment in the following channels:

Middle Ground Channel (38° 42'.5 S 146° 31'.5 E)  
 Snake Channel (38° 44'.4 S 146° 37'.0 E)  
 Midge Channel (38° 41'.8 S 146° 39'.9 E)  
 Port Albert Channel (38° 41'.5 S 146° 41'.2 E)  
 Kate Kearney Channel (38° 41'.7 S 146° 43'.0 E)  
 Kate Kearney Entrance (38° 41'.5 S 146° 45'.1 E)  
 Tarra Channel (38° 40'.8 S 146° 45'.7 E)  
 Boat Harbour Channel (38° 40'.4 S 146° 48'.4 E)  
 Pelican Channel (38° 39'.3 S 146° 48'.7 E)  
 Manns Beach Channel (38° 38'.8 S 146° 47'.4 E)  
 Manns Channel (38° 40'.5 S 146° 49'.6 E)  
 Oyster Bed Channel (38° 38'.5 S 146° 51'.2 E)  
 McLoughlins Entrance (38° 37'.8 S 146° 53'.0 E).

Mariners are advised to navigate with caution in the area.

Charts will be updated in due course.

**Chart which will be affected - Aus 181 - Aus 182**

II

**HYDROGRAPHIC REPORTS**

NIL



*To accompany Australian Notice to Mariners 588/2020*

**ELECTRONIC NAVIGATIONAL CHART (ENC)**

Larger scale ENC content exists in this area. When using electronic navigation systems, certain vessels (e.g. restricted by depth or size) may benefit from the additional level of detail shown in the largest scale ENC product available.

*Note for chart Aus 204*

*To accompany Australian Notice to Mariners 588/2020*

**ESTUARY AND RIVER ENTRANCES**

The crossing of coastal bars and entry to rivers and estuaries is potentially dangerous. Bars and entrances are dynamic in nature, hence the depth and preferred approach may vary. Leading beacons and other navigational aids may not always indicate the best approach. If mariners are unsure of the condition at a particular bar or entrance, local information should be sought prior to crossing.

*Note for chart Aus 806*

*To accompany Australian Notice to Mariners 588/2020*

**ESTUARY AND RIVER ENTRANCES**

The crossing of coastal bars and entry to rivers and estuaries is potentially dangerous. Bars and entrances are dynamic in nature, hence the depth and preferred approach may vary. Leading beacons and other navigational aids may not always indicate the best approach. If mariners are unsure of the condition at a particular bar or entrance, local information should be sought prior to crossing.

*Note for chart Aus 807*

*To accompany Australian Notice to Mariners 588/2020*

**ESTUARY AND RIVER ENTRANCES**

The crossing of coastal bars and entry to rivers and estuaries is potentially dangerous. Bars and entrances are dynamic in nature, hence the depth and preferred approach may vary. Leading beacons and other navigational aids may not always indicate the best approach. If mariners are unsure of the condition at a particular bar or entrance, local information should be sought prior to crossing.

*Note for chart Aus 808*

*To accompany Australian Notice to Mariners 588/2020*

**ELECTRONIC NAVIGATIONAL CHART (ENC)**

Larger scale ENC content exists in this area. When using electronic navigation systems, certain vessels (e.g. restricted by depth or size) may benefit from the additional level of detail shown in the largest scale ENC product available.

*Note for chart Aus 808*

*To accompany Australian Notice to Mariners 588/2020*

**ELECTRONIC NAVIGATIONAL CHART (ENC)**

Larger scale ENC content exists in this area. When using electronic navigation systems, certain vessels (e.g. restricted by depth or size) may benefit from the additional level of detail shown in the largest scale ENC product available.

*Note for chart Aus 806*

*To accompany Australian Notice to Mariners 588/2020*

**ELECTRONIC NAVIGATIONAL CHART (ENC)**

Larger scale ENC content exists in this area. When using electronic navigation systems, certain vessels (e.g. restricted by depth or size) may benefit from the additional level of detail shown in the largest scale ENC product available.

*Note for chart Aus 807*

*To accompany Australian Notice to Mariners 588/2020*

**UNEXPLODED ORDNANCE (UXO)**

The area is safe for surface navigation only; it is not safe for anchoring, trawling or seabed activities. For details see Mariners Handbook for Australian Waters AHP 20.

*Note for chart Aus 807*

*To accompany Australian Notice to Mariners 588/2020*

**UNEXPLODED ORDNANCE (UXO)**

The area is safe for surface navigation only; it is not safe for anchoring, trawling or seabed activities. For details see Mariners Handbook for Australian Waters AHP 20.

*Note for chart Aus 808*

*To accompany Australian Notice to Mariners 588/2020*

**ELECTRONIC NAVIGATIONAL CHART (ENC)**

Larger scale ENC content exists in this area. When using electronic navigation systems, certain vessels (e.g. restricted by depth or size) may benefit from the additional level of detail shown in the largest scale ENC product available.

*Note for chart Aus 809*

*To accompany Australian Notice to Mariners 588/2020*

#### ESTUARY AND RIVER ENTRANCES

The crossing of coastal bars and entry to rivers and estuaries is potentially dangerous. Bars and entrances are dynamic in nature, hence the depth and preferred approach may vary. Leading beacons and other navigational aids may not always indicate the best approach. If mariners are unsure of the condition at a particular bar or entrance, local information should be sought prior to crossing.

*Note for chart Aus 809*

*To accompany Australian Notice to Mariners 592/2020*

#### DREDGED AREAS

Depths in dredged areas, although generally maintained, may be less than charted. For the latest information, consult the Harbour Master.

*Note for chart Aus 256*

*To accompany Australian Notice to Mariners 592/2020*

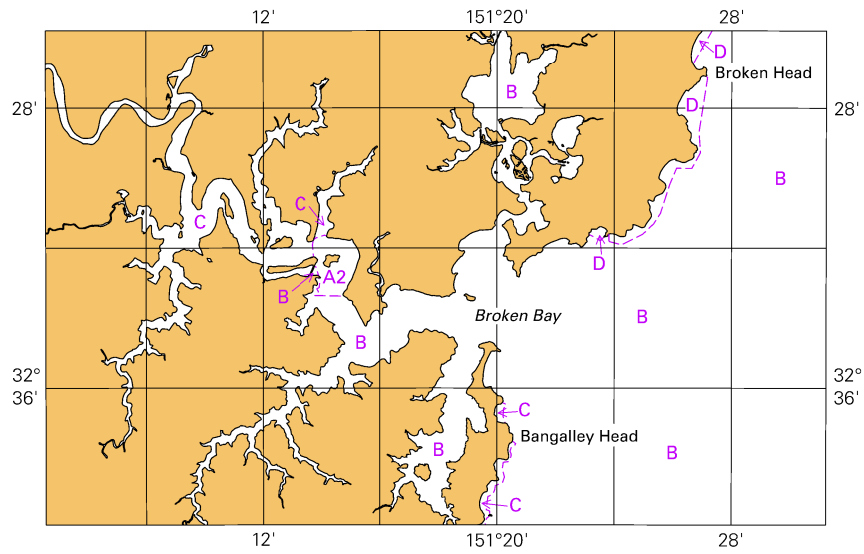
#### ELECTRONIC NAVIGATIONAL CHART (ENC)

Larger scale ENC content exists in this area. When using electronic navigation systems, certain vessels (e.g. restricted by depth or size) may benefit from the additional level of detail shown in the largest scale ENC product available.

*Note for chart Aus 256*

<b>Broome, WA (18° 00'S, 122° 13'E)</b>	
UN/LOCODE: AU BME	
Paper charts:	Aus 50, 51, 324
AusENC cells:	AU5050P0, AU418122, AU419122
Security Regulated Port:	Yes MSIC & Port Access Card required
Port Authority:	Kimberley Port Authority
Website:	<a href="http://www.kimberleyports.wa.gov.au">www.kimberleyports.wa.gov.au</a>
Email:	<a href="mailto:info@kimberleyports.wa.gov.au">info@kimberleyports.wa.gov.au</a>
Telephone:	+61 8 9194 3100
Pilot / Operations	
Telephone:	+61 8 9194 3100 +61 417 966 252
Email:	<a href="mailto:operations@kimberleyports.wa.gov.au">operations@kimberleyports.wa.gov.au</a>
Pilotage:	Compulsory > 35m LOA
Pilot Boarding Grounds:	Northern 17° 51.4'S, 122° 10.0'E > 7.5m Draft Western 17° 58.04'S, 122° 05.04'E < 7.5m Draft Inner 17° 59.25'S, 122° 09.9'E
Communication:	"Port of Broome"
Call up, emergencies:	VHF Channel 16
Port / Pilots / Tugs:	VHF Channel 1 & 14 / 12 / 06
Notice of ETA:	7 days
For more information:	<a href="http://www.kimberleyports.wa.gov.au">www.kimberleyports.wa.gov.au</a>

To accompany Australian Notice to Mariners 588/2020

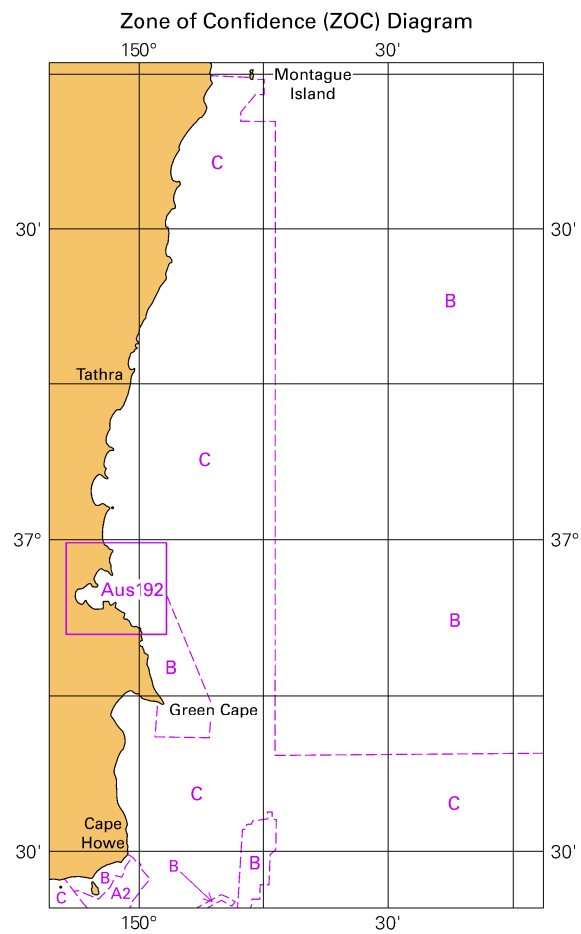


© Commonwealth of Australia 2020

Block for chart Aus 204

(103 x 65.3mm)

To accompany Australian Notice to Mariners 588/2020

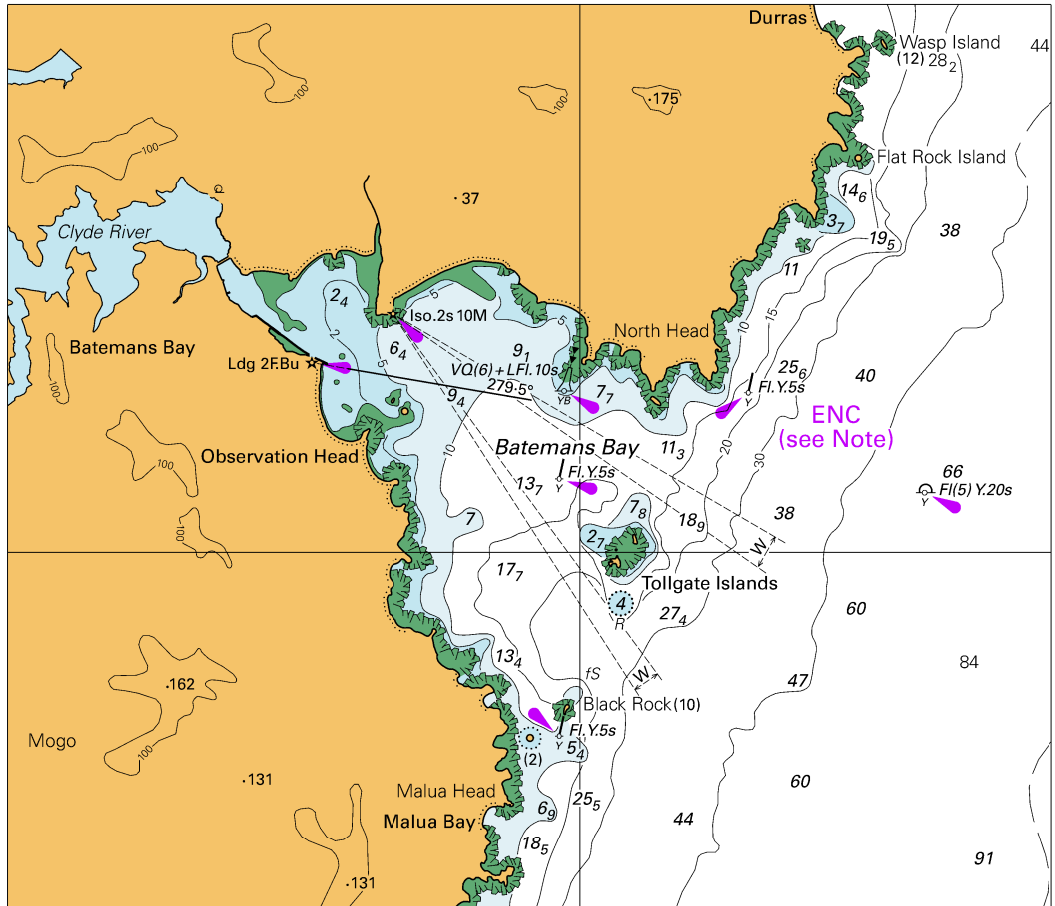


Block for chart Aus 806

(65.4 x 111.7mm)

© Commonwealth of Australia 2020

To accompany Australian Notice to Mariners 588/2020

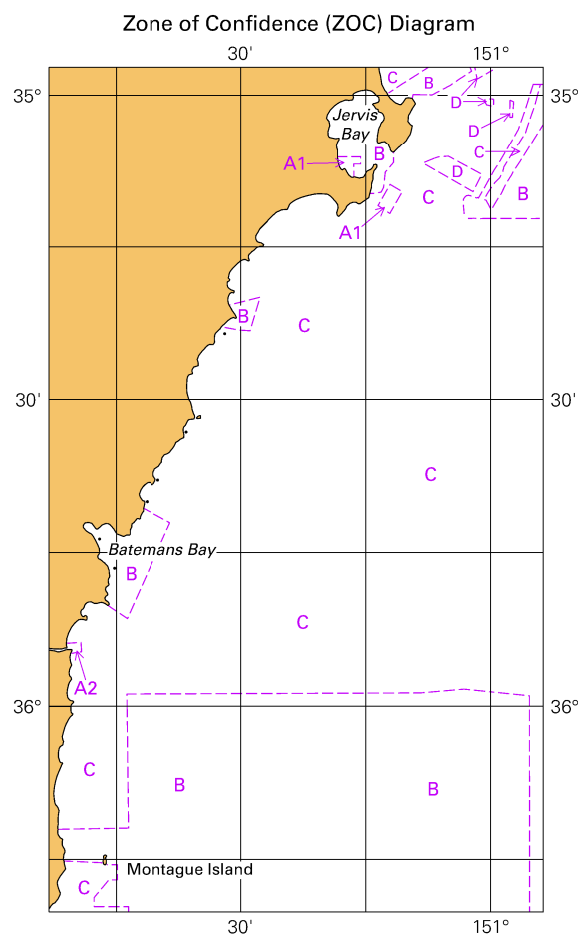


Block for chart Aus 807

© Commonwealth of Australia 2020

(138.0 x 119.4mm)

To accompany Australian Notice to Mariners 588/2020



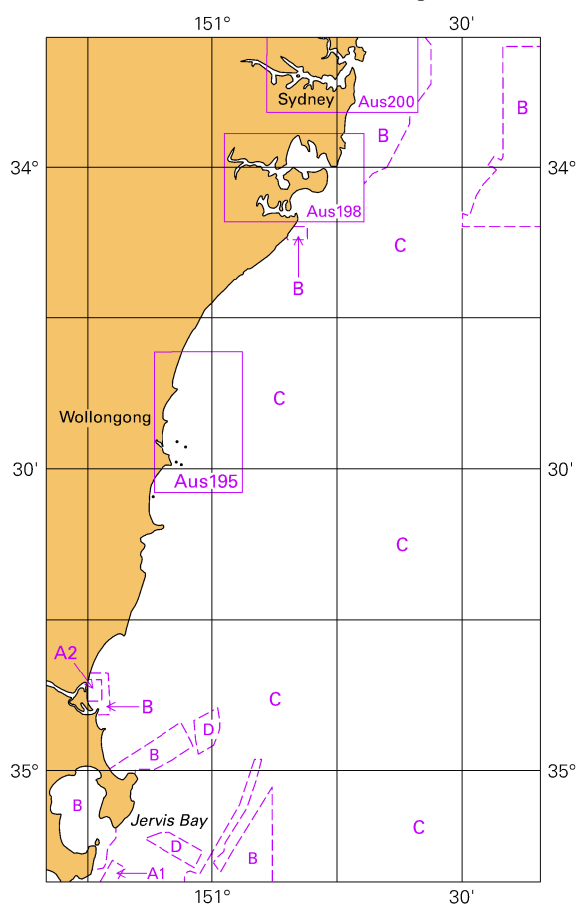
© Commonwealth of Australia 2020

Block for chart Aus 807

(65.4 x 111.8mm)

To accompany Australian Notice to Mariners 588/2020

Zone of Confidence (ZOC) Diagram



Block for chart Aus 808

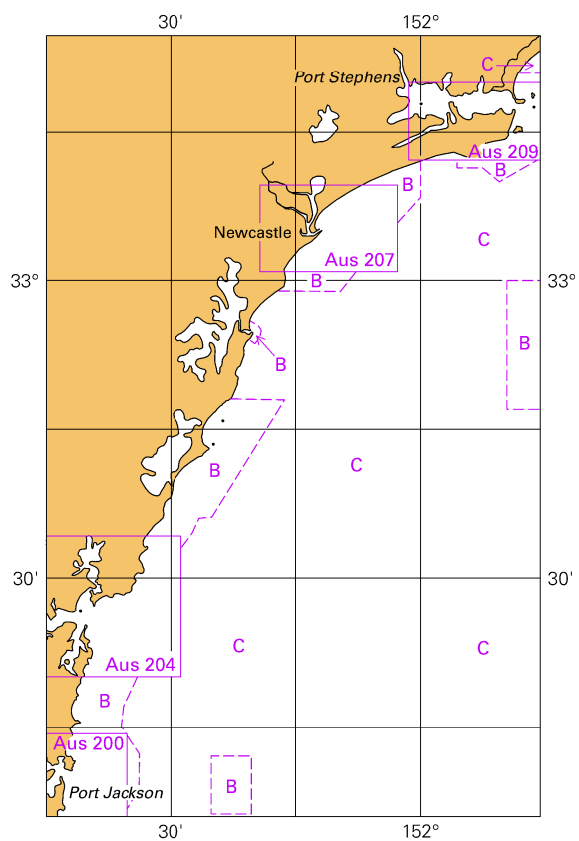
(65.3 x 111.6mm)

© Commonwealth of Australia 2020



To accompany Australian Notice to Mariners 588/2020

Zone of Confidence (ZOC) Diagram

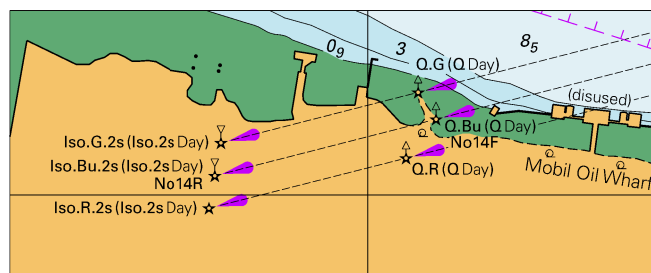


Block for chart Aus 809

(65.3 x 103.3mm)

© Commonwealth of Australia 2020

To accompany Australian Notice to Mariners 591/2020

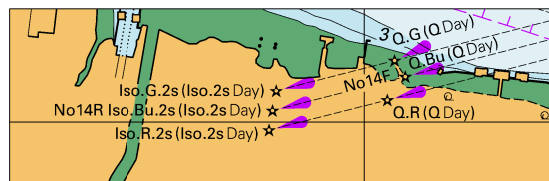


© Commonwealth of Australia 2020

Block B for chart Aus 238

(85.8 x 35.2mm)

*To accompany Australian Notice to Mariners 591/2020*

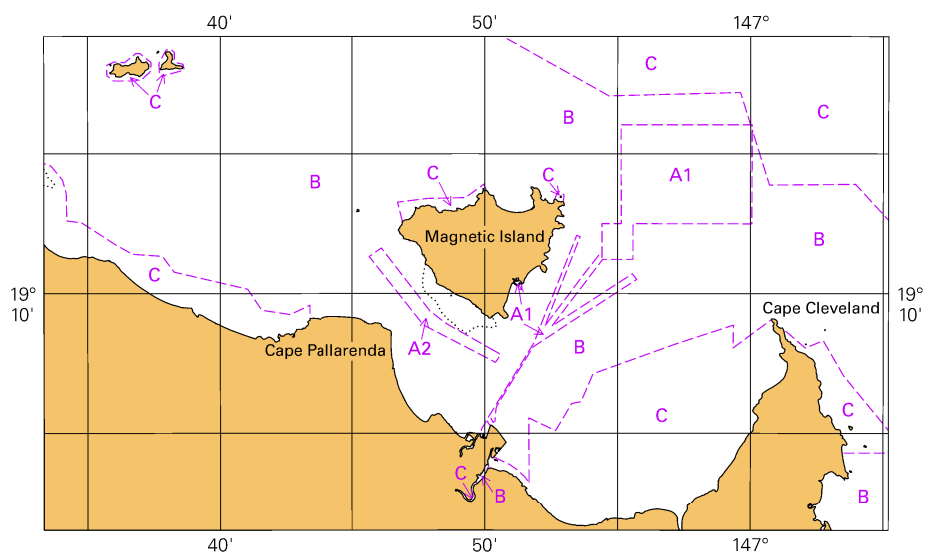


© Commonwealth of Australia 2020

*Block A for chart Aus 238*

(72.4 x 23.1mm)

To accompany Australian Notice to Mariners 592/2020  
 Zone of Confidence (ZOC) Diagram



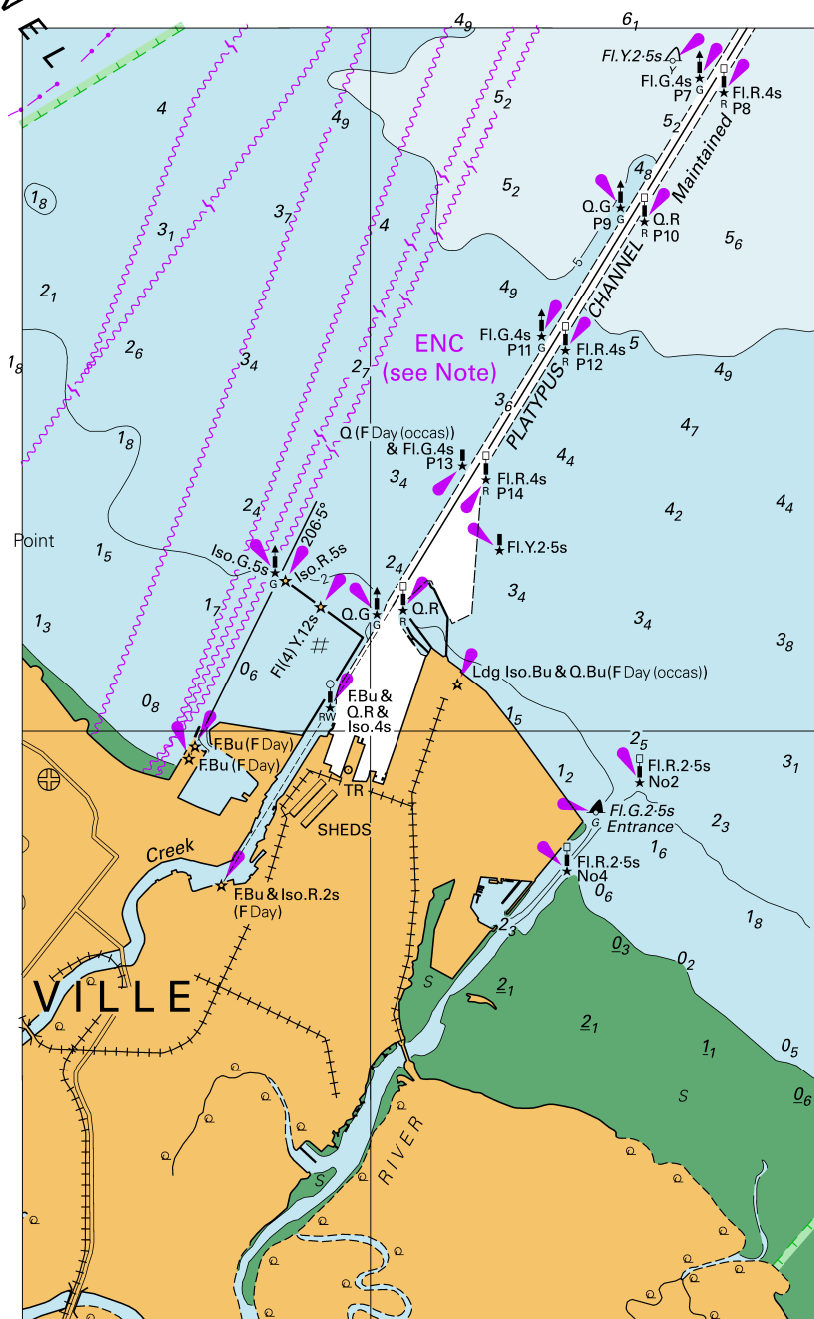
© Commonwealth of Australia 2020

Block for chart Aus 256

$\left( \begin{smallmatrix} 111.7 \\ 111.5 \end{smallmatrix} \right) \times 65.3\text{mm}$

N  
N  
E  
L

To accompany Australian Notice to Mariners 592/2020

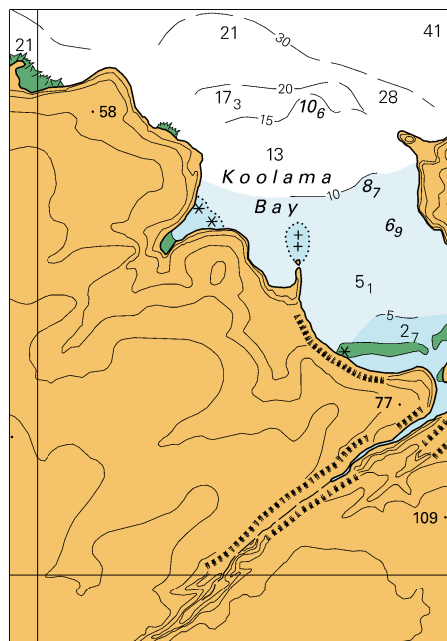


© Commonwealth of Australia 2020

Block for chart Aus 256

(105.8 x 171.2mm)

To accompany Australian Notice to Mariners 601/2020



© Commonwealth of Australia 2020  
*Block for chart Aus 727* (59.0 x 84.1mm)