



18 April 2019

Edition 8

# AUSTRALIAN NOTICES TO MARINERS

**Notices 372 - 416**

Published fortnightly by the Australian Hydrographic Office



Australian Notices to Mariners are the authority for correcting charts and publications published by the Australian Hydrographic Office covering Australia, Papua New Guinea, Solomon Islands, Australian Antarctic Territory and Timor-Leste.

Commodore F.T. FREEMAN RAN  
*Hydrographer of Australia*

---

## SECTIONS.

- I. **Australian Notices to Mariners, including blocks and notes.**
- II. **Hydrographic Reports.**
- III. **Navigational Warnings.**

## SUPPLEMENTS.

- I. **Tracings**
- II. **Cumulative List of Australian Notices to Mariners.**
- III. **Cumulative List of Temporary and Preliminary Australian Notices to Mariners.**
- IV. **Temporary and Preliminary Notices in force.**
- V. **Amendments to Admiralty List of Lights and Fog Signals (Vol K), Radio Signals (NP 281(2), 282, 283(2), 285, 286(4)) and Sailing Directions (NP 9, 13, 14, 15, 33, 34, 35, 36, 39, 44, 51, 60, 61, 62, 100, 136).**

---

© Commonwealth of Australia 2019

This work is copyright. Apart from any use permitted under the Copyright Act 1968, no part may be reproduced by any process, adapted, communicated or commercially exploited without prior written permission from The Commonwealth represented by the Australian Hydrographic Office.

## IMPORTANT NOTICE

This edition of Notices to Mariners includes all significant information affecting AHO products which the AHO has become aware of since the last edition. All reasonable efforts have been made to ensure the accuracy and completeness of the information, including third party information, on which these updates are based. The AHO regards third parties from which it receives information as reliable, however the AHO cannot verify all such information and errors may therefore exist. The AHO does not accept liability for errors in third party information.

---

## GENERAL INSTRUCTIONS

The substance of these notices should be inserted on the charts affected.

Bearings are referred to the true compass and are reckoned clockwise from North; those relating to lights are given as seen by an observer from seaward.

Positions quoted in notices relate to WGS84 which is the horizontal datum for all charts produced by the Australian Hydrographic Office.

The range quoted for a light is its nominal range.

Depths are with reference to the chart datum of each chart. Heights are above mean high water springs or mean higher high water, as appropriate.

The capital letter (P) or (T) after the number of any notice denotes a preliminary or temporary notice respectively, which are contained separately at the end of the permanent notices.

---

## REPORTING OF DANGERS

Mariners are particularly requested to notify the AUSTRALIAN HYDROGRAPHIC OFFICE, Locked Bag 8801 Wollongong, NSW 2500 (Fax 02-4223 6599, e-mail [datacentre@hydro.gov.au](mailto:datacentre@hydro.gov.au) or, alternatively by filling in and submitting the [Hydrographic Notes](#) forms located on the web site – [www.hydro.gov.au](http://www.hydro.gov.au)), immediately on the discovery of new dangers or suspected dangers to navigation. For changes or defects in aids to navigation notify AusSAR (Fax 02-6230 6868 or email [rccaus@amsa.gov.au](mailto:rccaus@amsa.gov.au)).

---

## AUTHORISED USE

Copies of Australian notices are available free of charge from the Australian Hydrographic Office (AHO) website ([www.hydro.gov.au](http://www.hydro.gov.au)) and through the eNotices (email) service ([www.hydro.gov.au/enotices/enotices.htm](http://www.hydro.gov.au/enotices/enotices.htm)).

Individual Notices may be copied for the purpose of inserting Notice substance on official charts and publications. Paper copies may be printed by chart agents and distributed to customers on a cost recovery basis. Participating chart agents are listed on the AHO website as providing a 'Paper Notices to Mariners' service ([www.hydro.gov.au/webapps/jsp/agents/agents-list.jsp](http://www.hydro.gov.au/webapps/jsp/agents/agents-list.jsp)). Copies of the notices may not be sold for profit without prior written agreement.

## NUMERICAL INDEX OF NOTICES TO MARINERS

### Edition No 8

Notices	Aus Chart, INT Chart, ENC Cell, AHP, BA Pubs
372	Aus 32, 182
373	Aus 52, 58, 68, 83, 111, 114, 520, 624, 628, 653, 739, 740, 741
374	Aus 220, 813
375	Aus 201, 202
376	Aus 4, 301, 701
377	Aus 268, 825, 826
378	Aus 263, 264
379	Aus 268, 825
380	Aus 236
381	Aus 68
382	Aus 324
383	Aus 325, 4722, INT 722
384	Aus 43, 322
385	Aus 357
386	Aus 181
387	Aus 164
388(T)	Aus 6
389(T)	Aus 259, 267
390(T)	Aus 256, 827
391(T)	Aus 257
392(T)	Aus 256
393(T)	Aus 4
394(T)	Aus 387, 388, 4622, INT 622
395(P)	Aus 512
396(T)	Aus 24, 25, 26, 28
397(T)	Aus 26, 28
398(T)	Aus 26, 28
399(T)	Aus 119
400(T)	Aus 328
401(T)	Aus 326, 739, 4722, INT 722
402(T)	Aus 324
403(T)	Aus 319, 320, 4721, 4722, INT 721, 722
404(T)	Aus 58
405(T)	Aus 65, 327, 328, 742, 4723, 4725, INT 723, 725
406(T)	Aus 328, 329, 744
407(T)	Aus 328, 329, 4723, 4725, INT 723, 725
408(T)	Aus 54
409(T)	Aus 53, 326, 739, 740, 4722, INT 722
410(T)	Aus 55, 56, 740, 741
411(T)	Aus 357
412(T)	Aus 357
413(T)	Aus 349, 787
414(T)	Aus 143, 155
415(T)	Aus 169
416(T)	Aus 177

# NUMERICAL INDEX OF CHARTS AFFECTED

## Edition No 8

Aus Chart	Notices
Aus 4	376, 393(T)
Aus 6	388(T)
Aus 24	396(T)
Aus 25	396(T)
Aus 26	396(T), 397(T), 398(T)
Aus 28	396(T), 397(T), 398(T)
Aus 32	372
Aus 43	384
Aus 52	373
Aus 53	409(T)
Aus 54	408(T)
Aus 55	410(T)
Aus 56	410(T)
Aus 58	373, 404(T)
Aus 65	405(T)
Aus 68	373, 381
Aus 83	373
Aus 111	373
Aus 114	373
Aus 119	399(T)
Aus 143	414(T)
Aus 155	414(T)
Aus 164	387
Aus 169	415(T)
Aus 177	416(T)
Aus 181	386
Aus 182	372
Aus 201	375
Aus 202	375
Aus 220	374
Aus 236	380
Aus 256	390(T), 392(T)
Aus 257	391(T)
Aus 259	389(T)
Aus 263	378
Aus 264	378
Aus 267	389(T)
Aus 268	377, 379
Aus 301	376
Aus 319	403(T)
Aus 320	403(T)
Aus 322	384
Aus 324	382, 402(T)
Aus 325	383
Aus 326	401(T), 409(T)
Aus 327	405(T)
Aus 328	400(T), 405(T), 406(T), 407(T)
Aus 329	406(T), 407(T)
Aus 349	413(T)
Aus 357	385, 411(T), 412(T)
Aus 387	394(T)
Aus 388	394(T)
Aus 512	395(P)
Aus 520	373

Aus Chart	Notices
Aus 624	373
Aus 628	373
Aus 653	373
Aus 701	376
Aus 739	373, 401(T), 409(T)
Aus 740	373, 409(T), 410(T)
Aus 741	373, 410(T)
Aus 742	405(T)
Aus 744	406(T)
Aus 787	413(T)
Aus 813	374
Aus 825	377, 379
Aus 826	377
Aus 827	390(T)
Aus 4622	394(T)
Aus 4721	403(T)
Aus 4722	383, 401(T), 403(T), 409(T)
Aus 4723	405(T), 407(T)
Aus 4725	405(T), 407(T)

INT Chart	Notices
INT 622	394(T)
INT 721	403(T)
INT 722	383, 401(T), 403(T), 409(T)
INT 723	405(T), 407(T)
INT 725	405(T), 407(T)

**372 AUSTRALIA - Products - New Charts, New Editions, Withdrawn Charts**

Australian Hydrographic Office

**New Charts**

Chart	Title and Geographical limits	Scale	Publication Date	Remarks
NIL				

**New Electronic Navigation Chart (Aus ENC)**

Cell Name	Title	Publication Date	Remarks
AU5250P0	Queensland - Great Barrier Reef - Hay Point and Mackay	19 April 2019	AU5250P1 and AU5250P2 have been withdrawn.

**New Editions and Withdrawn Charts**

Chart	Title	Scale	Publication Date	Remarks
Aus 32 (Edition 5)	Australia - North Coast - Western Plans: Approaches to Wyndham Wharf Wyndham Wharf	1:75 000  1:37 500 1:7 500	19 April 2019	General updating throughout including latest bathymetric surveys <b>Chart Aus 32 Edition 4 dated 19 April 2019 is now superseded and must be withdrawn from use.</b>
Aus 182 (Edition 3)	Australia - South Coast - Plans in Victoria - South East Coast Plans: Lewis Channel Approaches to Port Albert Barry Beach Marine Terminal Lakes Entrance Port Welshpool Port Albert	  1:25 000 1:15 000 1:12 500 1:10 000 1:7 500 1:7 500	19 April 2019	General updating throughout including latest bathymetric surveys. <b>Chart Aus 182 Edition 2 dated 29 November 2013 is now superseded and must be withdrawn from use.</b>

**Admiralty publication**

NP No	Title	Date	Remarks
NP282(2)	Admiralty List of Radio Signals. Radio Aids to Navigation, Differential GPS (DGPS), Legal Time, Radio Time Signals and Electronic Position Fixing System. The Americas, Far East and Oceania.	28/3/2019	The 2018/2019 Edition of NP282 is cancelled.

**Chart permanently withdrawn**

Charts listed above as withdrawn no longer meet chart carriage requirements and should be marked as "superseded" and replaced with the new chart/ new edition listed prior to passage through the area covered by the new chart.

When placing orders with a chart agent between notice of forthcoming edition and its publication, mariners should advise whether their order pertains to the current edition or the new edition.

For further details refer to the AHO website at [www.hydro.gov.au](http://www.hydro.gov.au) for new edition and new chart stock arrival information.

**373 AUSTRALIA - Products - New Charts and New Editions to be published shortly**

Australian Hydrographic Office

**New Charts to be published shortly**

<i>Chart</i>	<i>Title</i>	<i>Scale</i>	<i>Expected Publication Date</i>	<i>Remarks</i>
PNG 520	Papua New Guinea - North East Coast - Cape Nelson to Dyke Ackland Bay	1:150 000	9 May 2019	Adoption of Papua New Guinea chart numbering. Replaces Aus 520. General updating throughout including latest bathymetric surveys.
PNG 653	Papua New Guinea - North East Coast - Plans in Papua New Guinea (Sheet 7) Plans: Langemak Bay and Finschhafen Dregerhafen and Schneiderhafen	1:12 500 1:10 000	9 May 2019	Adoption of Papua New Guinea chart numbering. Replaces Aus 653. General updating throughout including latest bathymetric surveys.
PNG 624	Papua New Guinea - North East Coast - Plans in Papua New Guinea (Sheet 3) Plans: Alotau Samarai Island	1:5 000 1:5 000	9 May 2019	Adoption of Papua New Guinea chart numbering. Replaces Aus 624. General updating throughout including new submarine cable..
PNG 628	Papua New Guinea - Louisiade Archipelago - Nuakata Passage	1: 37 500	9 May 2019	Adoption of Papua New Guinea chart numbering. Replaces Aus 628. General updating throughout including new submarine cable.

**New Editions to be published shortly**

<i>Chart</i>	<i>Title</i>	<i>Scale</i>	<i>Expected Publication Date</i>	<i>Remarks</i>
NIL				

**Charts to be withdrawn**

<i>Chart</i>	<i>Remarks</i>
Aus 520	On publication of new chart PNG 520
Aus 653	On publication of new chart PNG 653
Aus 624	On publication of new chart PNG 624
Aus 628	On publication of new chart PNG 628

**Charts to be withdrawn without replacement in May 2019**

<i>Chart</i>	<i>Title</i>	<i>Scale</i>	<i>Publication Date</i>
Aus 52	Australia - North West Coast - Western Australia - Entrance Channel to Port Hedland	1:25 000	24 October 2014
<b>Edition 3</b>			
Aus 58	Australia - North West Coast - Western Australia - Port of Dampier	1:37 500	2 December 2016
<b>Edition 8</b>			
Aus 83	Australia - West Coast - Plans in Western Australia (Sheet 5)		18 May 2012
<b>Edition 1</b>	Plans: Recruit Bay Easter Group	1:25 000 1:25 000	

**Charts to be withdrawn without replacement in June 2019**

<i>Chart</i>	<i>Title</i>	<i>Scale</i>	<i>Publication Date</i>
Aus 111	Australia - West Coast - Western Australia - Careening Bay and Approaches	1:7 500	6 November 2015
<b>Edition 3</b>	Inset: Sulphur Bay	1:7 500	
Aus 114	Australia - West Coast - Western Australia - Kwinana	1:12 500	6 November 2015
<b>Edition 4</b>	Inset: Kwinana Grain Jetty	1:12 500	

**Charts to be withdrawn without replacement in July 2019**

18 April 2019

<b>373</b>	<b>AUSTRALIA - Products - New Charts and New Editions to be published shortly</b>		
<i>Chart</i>	<i>Title</i>	<i>Scale</i>	<i>Publication Date</i>
Aus 68	Australia - North West Coast - Western Australia - Approaches to cape Preston	1:50 000	8 March 2013
<b>Edition 1</b>	Inset: Cape Preston	1:10 000	
Aus 739	Australia - North West Coast - Western Australia - Bedout Islet to Port Hedland	1:150 000	15 January 2010
<b>Edition 3</b>			
Aus 740	Australia - North West Coast - Western Australia - Port Hedland to Port Walcott	1:150 000	15 January 2010
<b>Edition 3</b>	Inset: Depuch Island Anchorage	1:20 000	
Aus 741	Australia - North West Coast - Western Australia - Approaches to Dampier Archipelago	1:150 000	6 November 2015
<b>Edition 3</b>			

**374 AUSTRALIA - NEW SOUTH WALES - Ballina Head - Light**  
Australian Hydrographic Office

<b>Aus 220 (Richmond River Entrance) [315/2019]</b>			
Amend	light range to 16M	28° 52'.04 S	153° 35'.52 E
Delete	light sector and legend, W, emanating from light	28° 52'.04 S	153° 35'.52 E
<b>Aus 813 [211/2019]</b>			
Amend	light range to 16M	28° 52'.0 S	153° 35'.5 E
Delete	light sector and legend, W, emanating from light	28° 52'.0 S	153° 35'.5 E

**375 AUSTRALIA - NEW SOUTH WALES - Port Jackson - Buoys**

Australian Sailing

**Aus 201 [317/2019]**

Move	buoy	33° 48'.32 S	151° 16'.47 E
	to	33° 48'.349 S	151° 16'.489 E
	buoy	33° 48'.86 S	151° 16'.90 E
	to	33° 48'.819 S	151° 16'.955 E
	buoy	33° 48'.99 S	151° 16'.13 E
	to	33° 49'.052 S	151° 16'.039 E
	buoy	33° 49'.25 S	151° 15'.28 E
	to	33° 49'.292 S	151° 15'.242 E
	buoy	33° 49'.43 S	151° 15'.35 E
	to	33° 49'.424 S	151° 15'.299 E
	buoy	33° 49'.87 S	151° 15'.92 E
	to	33° 49'.845 S	151° 15'.981 E
	buoy	33° 50'.30 S	151° 16'.18 E
	to	33° 50'.332 S	151° 16'.185 E
	buoy	33° 50'.36 S	151° 15'.59 E
	to	33° 50'.343 S	151° 15'.613 E
	buoy	33° 50'.51 S	151° 16'.18 E
	to	33° 50'.439 S	151° 16'.249 E
	buoy	33° 50'.52 S	151° 15'.32 E
	to	33° 50'.533 S	151° 15'.343 E
	buoy	33° 50'.86 S	151° 14'.94 E
	to	33° 50'.898 S	151° 14'.922 E
	buoy	33° 50'.87 S	151° 16'.05 E
	to	33° 50'.945 S	151° 15'.927 E
	buoy	33° 51'.62 S	151° 15'.54 E
	to	33° 51'.609 S	151° 15'.572 E
	buoy	33° 51'.75 S	151° 15'.04 E
	to	33° 51'.758 S	151° 15'.077 E
Delete	buoy	33° 48'.15 S	151° 16'.40 E
	buoy	33° 48'.79 S	151° 17'.05 E
	depth, 4 <sub>6</sub> m	33° 50'.34 S	151° 16'.18 E
	depth, 13 <sub>3</sub> m	33° 51'.76 S	151° 15'.08 E

**Aus 202 [317/2019]**

Move	buoy	33° 50'.86 S	151° 14'.94 E
	to	33° 50'.898 S	151° 14'.922 E
Delete	buoy	33° 51'.75 S	151° 15'.04 E

**376 AUSTRALIA - QUEENSLAND - Albatross Bay - Depths**

Maritime Safety Queensland

**Aus 4 [1070/2018]**

Insert	accompanying block	12° 38'.50 S	141° 40'.00 E
--------	--------------------	--------------	---------------

**Aus 301 [7/2019]**

Insert	depth, 9 <sub>8</sub> m, and extend contour SW to enclose	12° 40'.23 S	141° 39'.07 E
--------	---	--------------	---------------

**Aus 701 [261/2019]**

Insert	accompanying block	12° 40'.0 S	141° 42'.0 E
--------	--------------------	-------------	--------------



**377 AUSTRALIA - QUEENSLAND - Bowen - Nav aids**

Former Notices - 884(T)/2016, 326(T)/2017 are cancelled  
Maritime Safety Queensland Notice 140/2019

**Aus 268 [1112/2018]**

Insert	port lateral cylindrical light buoy, <i>Q.R N2</i> , without topmak	20° 01'.362 S	148° 16'.803 E
Amend	light to <i>Oc.F.WRG.3s 5M</i>	20° 01'.27 S	148° 14'.59 E
	legend to <i>Dir 315·5°</i>	20° 03'.38 S	148° 16'.82 E
Move	lit mooring buoy	20° 02'.73 S	148° 15'.78 E
	to	20° 02'.746 S	148° 15'.819 E
	lit mooring buoy	20° 02'.97 S	148° 16'.00 E
	to	20° 02'.986 S	148° 16'.058 E
	lit mooring buoy	20° 03'.47 S	148° 16'.55 E
	to	20° 03'.527 S	148° 16'.547 E
Delete	dashed line, between	20° 00'.88 S	148° 14'.19 E
		20° 01'.18 S	148° 14'.50 E
	light and daymark	20° 00'.88 S	148° 14'.19 E
	daymark	20° 01'.27 S	148° 14'.59 E
	light beacon	20° 01'.27 S	148° 16'.97 E
	lit mooring buoy	20° 02'.79 S	148° 15'.91 E

**Aus 268 (Bowen) [1112/2018]**

Amend	legend to <i>Dir WRG 315·5°</i>	20° 02'.47 S	148° 15'.85 E
Move	light buoy	20° 02'.37 S	148° 15'.71 E
	to	20° 02'.385 S	148° 15'.700 E

**Aus 825 [1112/2018]**

Delete	light	20° 00'.9 S	148° 14'.2 E
	light	20° 01'.3 S	148° 14'.6 E
	lights	20° 01'.4 S	148° 15'.1 E
	light	20° 04'.0 S	148° 15'.5 E

**Aus 826 [1112/2018]**

Delete	light	20° 00'.9 S	148° 14'.2 E
	light	20° 01'.3 S	148° 14'.6 E
	lights	20° 01'.4 S	148° 15'.1 E
	light	20° 04'.0 S	148° 15'.5 E

**378 AUSTRALIA - QUEENSLAND - Cairns - Smiths Creek - Infrastructure**

AHO , Department of Defence

**Aus 263 [273/2018]**

Insert	accompanying block	16° 56'.7 S	145° 46'.5 E
--------	--------------------	-------------	--------------

**Aus 264 [273/2018]**

Insert	accompanying block	16° 56'.7 S	145° 46'.5 E
--------	--------------------	-------------	--------------

**379 AUSTRALIA - QUEENSLAND - Gloucester Passage - Light buoys**

Former Notice - 564(T)/2017 is cancelled  
Maritime Safety Queensland

**Aus 268 [377/2019]**

Delete	topmark	20° 03'.29 S	148° 28'.15 E
	topmark	20° 04'.02 S	148° 26'.41 E

**Aus 825 [377/2019]**

Delete	light buoy	20° 04'.0 S	148° 26'.4 E
--------	------------	-------------	--------------

**380 AUSTRALIA - QUEENSLAND - Moreton Bay - Waterloo Bay - Nav aids**

Maritime Safety Queensland Notice 158/2019

**Aus 236 [1119/2018]**

Replace	light beacon, with east cardinal light beacon, Q(3) 10s, with topmark	27° 28'.0 S	153° 12'.9 E
Delete	legend, (see Notes)	27° 28'.0 S	153° 12'.4 E

**381 AUSTRALIA - WESTERN AUSTRALIA - Cape Preston - Nav aids**

Argonaut Marine Group

**Aus 68 [108/2019]**

Insert	light, 2F.Bu, with rectangular daymark	20° 49'.28 S	116° 11'.58 E
	a dashed line in a direction 214° for a distance of 390m, thence a continuous line for 665m, with legend 034°, emanating from light	20° 49'.28 S	116° 11'.58 E
	light, F.G, with rectangular daymark	20° 50'.31 S	116° 12'.13 E
	light, F.G, with rectangular daymark	20° 50'.41 S	116° 12'.31 E
	a dashed line in a direction 303° for a distance of 2220m, thence a continuous line for 3030m, with legend 123°, emanating from light	20° 50'.41 S	116° 12'.31 E

**Aus 68 (Cape Preston) [108/2019]**

Insert	dashed line, between	20° 49'.999 S	116° 11'.633 E
		20° 49'.754 S	116° 11'.233 E
	continuous line, between	20° 49'.754 S	116° 11'.233 E
		20° 49'.610 S	116° 11'.000 E
	a dashed line in a direction 214° for a distance of 390m, thence a continuous line for 665m, with legend 034°, emanating from light	20° 49'.280 S	116° 11'.575 E
	light, F.Bu, with rectangular daymark	20° 49'.280 S	116° 11'.575 E
	light, F.Bu, with rectangular daymark	20° 49'.315 S	116° 11'.550 E

**382 AUSTRALIA - WESTERN AUSTRALIA - Lacepede Islands - Depths southwestwards**

Australian Hydrographic Office

**Aus 324 [56/2017]**

Insert	accompanying block	17° 29'.30 S	121° 33'.70 E
--------	--------------------	--------------	---------------

**383 AUSTRALIA - WESTERN AUSTRALIA - Rowley Shoals - Scientific instrument southeastwards**

Australian Institute of Marine Science

**Aus 325 [1078/2018]**

Insert	depth, 15m, enclosed by danger circle with legend, ODAS	17° 45'.73 S	119° 55'.30 E
--------	---	--------------	---------------

**Aus 4722 (INT 722) [1078/2018]**

Insert	depth, 15m, enclosed by danger circle with legend, ODAS	17° 45'.7 S	119° 55'.3 E
--------	---	-------------	--------------

**384 INDIAN OCEAN - Scott Reef - Depths**

Australian Hydrographic Office

**Aus 43 [563/2018]**

Insert	contour between	14° 04'.17 S	121° 56'.27 E
		14° 04'.41 S	121° 56'.31 E
	accompanying block	14° 01'.73 S	121° 48'.78 E
	depth, 13 <sub>6</sub> m enclosed by contour	14° 04'.21 S	121° 56'.72 E
	depth, 29m enclosed by contour	14° 04'.77 S	121° 56'.02 E
	depth, 38m	14° 07'.97 S	121° 53'.56 E
	depth, 39m	14° 08'.59 S	121° 53'.96 E
Replace	depth, 12 <sub>6</sub> m, with depth, 11m	14° 07'.3 S	121° 50'.0 E
Delete	contour between	14° 04'.2 S	121° 56'.3 E
		14° 04'.4 S	121° 56'.4 E
	depth, 15 <sub>6</sub> m	14° 04'.3 S	121° 56'.8 E
	depth, 46m	14° 08'.3 S	121° 53'.6 E

**Aus 322 [621/2018]**

Replace	depth, 12 <sub>6</sub> m, with depth, 11m	14° 07'.3 S	121° 50'.0 E
---------	---	-------------	--------------

**385 AUSTRALIA - VICTORIA - Lakes Entrance - Light range**

Australian Hydrographic Office

**Aus 357 [331/2019]**

Amend	light to <i>F.7M</i> & <i>F.Bu</i>	37° 53'.3 S	147° 58'.4 E
-------	------------------------------------	-------------	--------------

**386 AUSTRALIA - VICTORIA - Port Albert Entrance - Light buoys**

Gippsland Ports Notices 80/2019, 89/2019

**Aus 181 [19/2019]**

Move	light buoy	38° 45'.21 S	146° 41'.39 E
	to	38° 45'.28 S	146° 41'.35 E
	light buoy	38° 45'.57 S	146° 42'.18 E
	to	38° 45'.65 S	146° 42'.15 E
Delete	light buoy	38° 48'.2 S	146° 20'.7 E
	light buoy	38° 49'.2 S	146° 18'.1 E

**387 AUSTRALIA - TASMANIA - Devonport - Dredged depths**

Marine and Safety Tasmania

**Aus 164 (Devonport) [1136/2018]**

Amend	legend to <i>Dredged to 9·1m (2019)</i>	41° 10'.17 S	146° 22'.02 E
	legend to <i>6·9m (2019)</i>	41° 10'.81 S	146° 21'.94 E
	legend to <i>9·3m (2019)</i>	41° 10'.91 S	146° 21'.97 E
	legend to <i>8·2m (2019)</i>	41° 11'.03 S	146° 21'.98 E
	legend to <i>Dredged to 8·5m (2019)</i>	41° 11'.06 S	146° 21'.88 E
	legend to <i>6·3m</i>	41° 11'.10 S	146° 22'.00 E
	legend to <i>7·7m (2019)</i>	41° 11'.20 S	146° 21'.82 E

**388(T)/2019 AUSTRALIA - QUEENSLAND - Karumba - Shoaling; shipping channel***Former Notice - 233(T)/2019 is cancelled*

Maritime Safety Queensland Notice 283/2018, 107(T)/2019, 164(T)/2019

Shoaling exists in the entrance channel between beacon No8 (17° 26'.36 S 140° 44'.73 E) and beacon No10 (17° 26'.65 S 140° 45'.32 E).

Mariners are advised that the shipping channel between beacon No8 and beacon No10 is now south of the charted channel and should use the following waypoints and courses to remain in the centre of the dredged area:

Steer course 118.9° (T) to waypoint 17° 26'.448 S 140° 44'.827 E;  
 then steer 135.4° (T) to waypoint 17° 26'.600 S 140° 44'.984 E;  
 then steer 118.9° (T) to waypoint 17° 26'.667 S 140° 45'.111 E;  
 then steer 097.1° (T) to waypoint 17° 26'.686 S 140° 45'.274 E;  
 then steer 091.1° (T) to waypoint 17° 26'.686 S 140° 45'.466 E;  
 then steer 085°.

Mariners are advised to navigate with caution in the area.

**Chart temporarily affected - Aus 6****389(T)/2019 AUSTRALIA - QUEENSLAND - Lucinda - Hinchinbrook Channel - Scientific instruments recovered***Former Notice - 1142(T)/2018 is cancelled*

Maritime Safety Queensland

Cancel this notice on receipt.

**Chart formerly affected - Aus 259 - Aus 267****390(T)/2019 AUSTRALIA - QUEENSLAND - Rattlesnake Island - Live firing***Former Notice - 279(T)/2019 is cancelled*

Maritime Safety Queensland Notice 150(T)/2019

Live firing activities will be conducted within a 5M radius of position 19° 02'.45 S 146° 36'.72 E from 1 May to 12 May 2019.

Mariners are advised to navigate with caution in the area.

**Chart temporarily affected - Aus 256 - Aus 827****391(T)/2019 AUSTRALIA - QUEENSLAND - Townsville - Ross River - Dredging operations***Former Notice - 236(T)/2019 is cancelled*

Maritime Safety Queensland Notice 93(T)/2019, 162(T)/2019

Vessels *Max Hooper*, *Eric Netterfield* and *Allan Ticehurst* are conducting dredging operations in the Ross River entrance (19° 15'.64 S 146° 50'.57 E).

Barge *Max Hooper* will be anchored at the edge of the channel at night and will display appropriate lights and shapes.

The dredge *Rose Bud* is conducting dredging operations in the vicinity of position 19° 16'.56 S 146° 49'.83 E. The dredge will monitor VHF Ch 16.

Mariners are advised to navigate with caution in the area.

**Chart temporarily affected - Aus 257****392(T)/2019 AUSTRALIA - QUEENSLAND - Townsville - Cleveland Bay - Obstruction**

Maritime Safety Queensland Notice 165(T)/2019

An obstruction marked by a special light buoy, *Fl. Y. 5s*, exists in position 19° 14'.71 S 146° 49'.77 E.

**Chart temporarily affected - Aus 256**

**393(T)/2019 AUSTRALIA - QUEENSLAND - Weipa - South Channel - Harbour works**

Maritime Safety Queensland Notice 167(T)/2019

Harbour works associated with beacon replacement are in progress in the South Channel in an area bounded by the following positions:

12°42'.72 S 141°39'.72 E  
 12°40'.55 S 141°49'.73 E  
 12°39'.83 S 141°49'.44 E  
 12°41'.82 S 141°39'.04 E

Mariners are advised to navigate with caution in the area, and create No Wash in the vicinity of the barges and pile driving operations.

**Chart temporarily affected - Aus 4**

**394(T)/2019 PAPUA NEW GUINEA - Cape Croisilles - Light unlit**

National Maritime Safety Authority PNG Coastal Navigation Warning 16/2019

The light, *Fl(2)6s 22m 10M* (4° 50'.89 S 145° 48'.20 E), is unlit.

**Chart temporarily affected - Aus 387 - Aus 388 - Aus 4622 (INT 622)**

**395(P)/2019 PAPUA NEW GUINEA - Deboyne Lagoon - Shoaling**

National Maritime Safety Authority PNG

Latest survey shows shoaler depths than those charted may exist in areas bounded by the following positions:

10° 45'.28 S 152° 23'.63 E  
 10° 43'.94 S 152° 24'.33 E  
 10° 43'.04 S 152° 22'.09 E  
 10° 44'.21 S 152° 21'.44 E.

Mariners are advised to navigate with caution in the area.

Charts will be updated in due course.

**Chart which will be affected - Aus 512**

**396(T)/2019 AUSTRALIA - NORTHERN TERRITORY - Darwin - East Arm - Light buoy unlit**

Department of Infrastructure, Planning and Logistics NT Notice 23(T)/2019

The starboard lateral light buoy, *Iso.G.2s No15* (12° 28'.96 S 130° 51'.53 E), is unlit.

**Chart temporarily affected - Aus 24 - Aus 25 - Aus 26 - Aus 28**

**397(T)/2019 AUSTRALIA - NORTHERN TERRITORY - Darwin - East Arm - Scientific instruments**

Department of Infrastructure, Planning and Logistics NT Notice 21(T)/2019

Special light buoys, *Fl(5)20s*, exist in positions 12° 30'.22 S 130° 54'.24 E and 12° 30'.20 S 130° 54'.20 E.

**Chart temporarily affected - Aus 26 - Aus 28**

**398(T)/2019 AUSTRALIA - NORTHERN TERRITORY - Darwin - East Arm - Preston Point - Light beacon unlit**

Department of Infrastructure, Planning and Logistics NT Notice 20(T)/2019

The light beacon, *F.Bu & Fl.Y.2s L01A* (12° 30'.61 S 130° 53'.76 E), is unlit.

**Chart temporarily affected - Aus 26 - Aus 28**

**399(T)/2019 AUSTRALIA - WESTERN AUSTRALIA - Bandy Creek Boat Harbour - Dredging operations**

Department of Transport WA Notice 57/2019

The dredge *Cooper II* is conducting dredging operations in the entrance to Bandy Creek Boat Harbour (33° 50'.17 S 121° 56'.00 E).

The dredge has deployed anchors and will display appropriate lights and shapes. A 60m floating pipeline marked by special light buoys exists in the area.

The dredge will monitor VHF Ch 16, UHF 15 and Marine 27 MHz Channel 90. Mariners must make contact prior to navigating past the dredge.

Mariners are advised to navigate with caution in the area.

**Chart temporarily affected - Aus 119****400(T)/2019 AUSTRALIA - WESTERN AUSTRALIA - Barrow Island - Mooring buoys northwestwards**

Deep Sea Mooring , Australian Maritime Safety Authority Auscoast Warning 122/19

16 lit yellow mooring buoys, *Fl.3s*, exist within 1.6M radius of 20° 24'.49 S 114° 50'.95 E.

**Chart temporarily affected - Aus 328****401(T)/2019 AUSTRALIA - WESTERN AUSTRALIA - Bedout Islets - Drill rig northwestwards**

Santos

On or about 24 April 2019, drill rig *Noble Tom Prosser* will be conducting drilling operations in position 19° 01'.33 S 118° 45'.07 E.

**Chart temporarily affected - Aus 326 - Aus 739 - Aus 4722 (INT 722)****402(T)/2019 AUSTRALIA - WESTERN AUSTRALIA - Broome - Drill rig northwestwards moved**

*Former Notice - 1095(T)/2018 is cancelled*  
MODU *ENSCO 5006*

Cancel this notice on receipt.

**Chart formerly affected - Aus 324****403(T)/2019 AUSTRALIA - WESTERN AUSTRALIA - Browse Island - Drill rig northwestwards**

MODU *ENSCO 5006*

Drill rig *ENSCO 5006* is conducting drilling operations in position 13° 51'.69 S 123° 16'.37 E.

**Chart temporarily affected - Aus 319 - Aus 320 - Aus 4721 (INT 721) - Aus 4722 (INT 722)****404(T)/2019 AUSTRALIA - WESTERN AUSTRALIA - Dampier - Rio Tinto Channel - Light buoy restored**

*Former Notice - 354(T)/2019 is cancelled*  
Pilbara Ports Authority

Cancel this notice on receipt.

**Chart formerly affected - Aus 58**

**405(T)/2019 AUSTRALIA - WESTERN AUSTRALIA - Montebello Islands - Survey operations completed northwestwards**

*Former Notice* - 356(T)/2019 is cancelled  
Technip FMC

Cancel this notice on receipt.

**Chart formerly affected - Aus 65 - Aus 327 - Aus 328 - Aus 742 - Aus 4723 (INT 723) - Aus 4725 (INT 725)**

**406(T)/2019 AUSTRALIA - WESTERN AUSTRALIA - Muiron Islands - Subsea operations northwestwards**

*Former Notice* - 538(T)/2018 is cancelled  
Technip FMC

MV *Deep Orient* and *Skandi Singapore* will be conducting subsea operations in the vicinity of position 21° 25'.75 S 114° 05'.07 E.

**Chart temporarily affected - Aus 328 - Aus 329 - Aus 744**

**407(T)/2019 AUSTRALIA - WESTERN AUSTRALIA - North West Cape - Drill rig northwestwards**

*Former Notice* - 298(T)/2019 is cancelled  
Australian Maritime Safety Authority

Cancel this notice on receipt.

**Chart formerly affected - Aus 328 - Aus 329 - Aus 4723 (INT 723) - Aus 4725 (INT 725)**

**408(T)/2019 AUSTRALIA - WESTERN AUSTRALIA - Port Hedland - Light beacons charted**

*Former Notice* - 1123(T)/2015 is cancelled  
BHP Billiton Petroleum Pty Ltd

Cancel this notice on receipt.

**Chart formerly affected - Aus 54**

**409(T)/2019 AUSTRALIA - WESTERN AUSTRALIA - Port Hedland - Light beacon damaged; racon non-operational**  
Australian Maritime Safety Authority

The light beacon, *Fl.2s 9m 12M Racon (G) C1* (19° 59'.50 S 118° 26'.17 E), has been damaged. The racon is non-operational and the light is operating with a reduced range of 5M.

**Chart temporarily affected - Aus 53 - Aus 326 - Aus 739 - Aus 740 - Aus 4722 (INT 722)**

**410(T)/2019 AUSTRALIA - WESTERN AUSTRALIA - Port Walcott - Nav aids damaged; nav aids off station; nav aids unlit**

*Former Notice* - 360(T)/2019 is cancelled  
Department of Transport WA Notice 49/2019, Rio Tinto

Nav aids in the Port Walcott shipping channel may be damaged, off station or destroyed due to a severe weather event.

The south cardinal light buoy, *No63* (20° 30'.54 S 117° 21'.57 E), is off station and currently in a position 200m WSW of charted position.

Mariners are advised to navigate with caution in the area.

**Chart temporarily affected - Aus 55 - Aus 56 - Aus 740 - Aus 741**

**411(T)/2019 AUSTRALIA - VICTORIA - Cape Conran - Subsea operations; pipeline operations southwards**  
Cooper Energy

Vessel *Seven Eagle* is conducting subsea and pipeline operations between the following positions:

37° 48'.11 S 148° 26'.15 E

37° 50'.55 S 148° 26'.23 E

38° 06'.62 S 149° 01'.54 E.

Mariners are advised to navigate with caution in the area.

**Chart temporarily affected - Aus 357**

**412(T)/2019 AUSTRALIA - VICTORIA - Golden Beach - Scientific instrument recovered**

*Former Notice* - 1047(T)/2018 is cancelled

Maritime Safety Victoria Notice 88(T)/2019

Cancel this notice on receipt.

**Chart formerly affected - Aus 357**

**413(T)/2019 AUSTRALIA - VICTORIA - Port Campbell - Subsea operations southwestwards**

Cooper Energy , Sapura Constructor

Vessel *Sapura Constructor* is conducting subsea operations in an area bounded by the following positions:

38° 48'.2 S 142° 41'.3 E

38° 48'.2 S 142° 46'.6 E

38° 40'.2 S 142° 39'.7 E

38° 40'.2 S 142° 34'.4 E.

Mariners are advised to navigate with caution in the area. 2.5M clearance requested.

**Chart temporarily affected - Aus 349 - Aus 787**

**414(T)/2019 AUSTRALIA - VICTORIA - Port Phillip - Scientific instrument**

Victorian Ports Corporation (Melbourne) Notice 70(T)/2019

A subsurface scientific instrument exists in position 38° 01'.70 S 144° 53'.08 E.

**Chart temporarily affected - Aus 143 - Aus 155**

**415(T)/2019 AUSTRALIA - TASMANIA - Georges Bay - The Barway - Light buoy off station**

Maritime and Safety Tasmania Notice 71/2019

The wreck buoy (41°16'.24 S 148°20'.07 E) is off station.

**Chart temporarily affected - Aus 169**

**416(T)/2019 AUSTRALIA - TASMANIA - Macquarie Harbour - Scientific instrument**

Marine and Safety Tasmania Notice 74/2019

A scientific instrument marked by a white buoy exists in position 42° 10'.03 S 145° 19'.61 E.

**Chart temporarily affected - Aus 177**



II

**HYDROGRAPHIC REPORTS**

NIL

**NAVIGATION WARNINGS**

The Australian Hydrographic Office will no longer compile Section III of the Australian Notices to Mariners. For the most up to date navigation warnings please refer to:

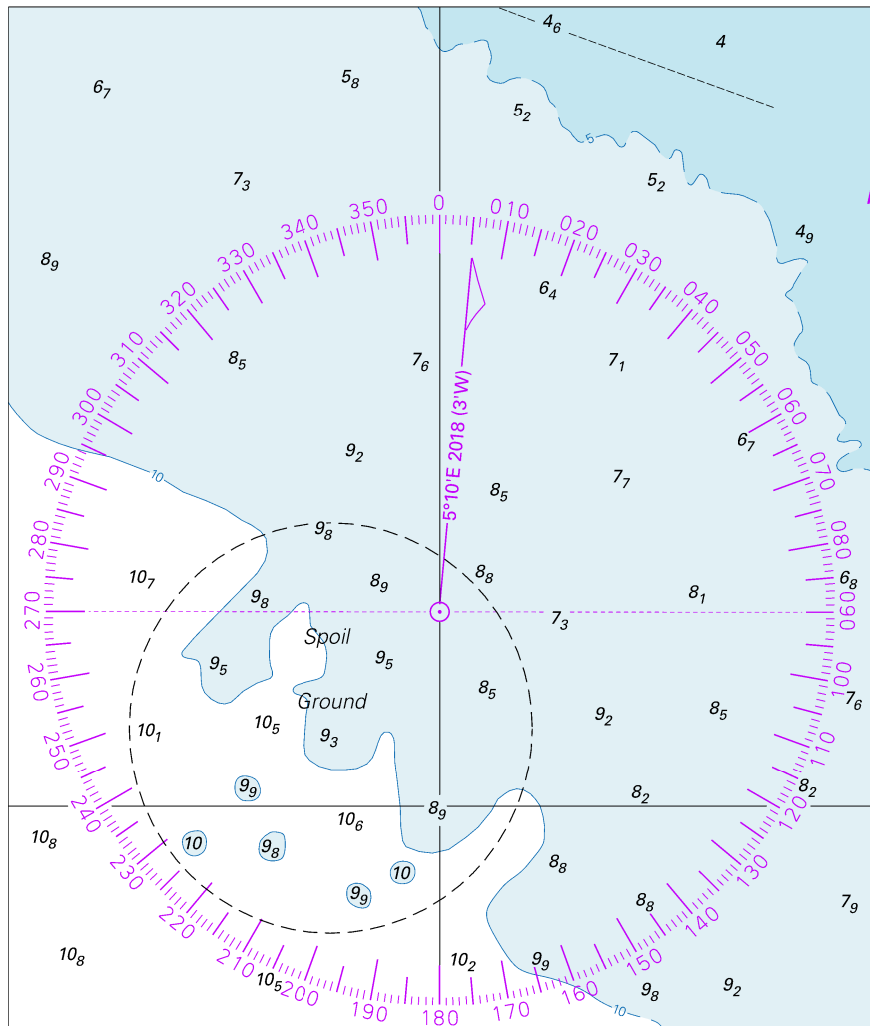
AMSA Navigation Warnings

<http://amsa.gov.au/search-and-rescue/distress-and-safety-comms/msi/msi-email/index.asp>

New Zealand Notices to Mariners (Navarea XIV warnings)

<http://www.linz.govt.nz/sea/maritime-safety/notices-mariners>

To accompany Australian Notice to Mariners 376/2019



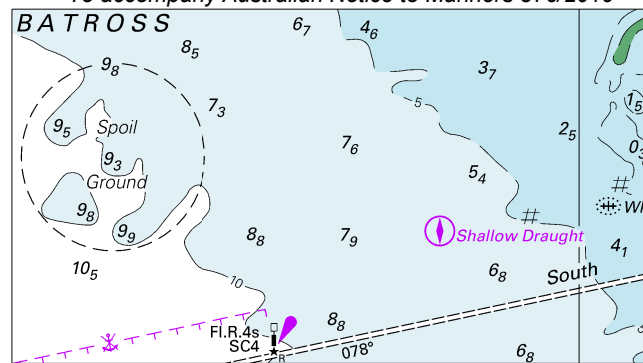
Inadequately

Block for Chart Aus 4

© Commonwealth of Australia 2018

(115.2 x 135.3mm)

To accompany Australian Notice to Mariners 376/2019

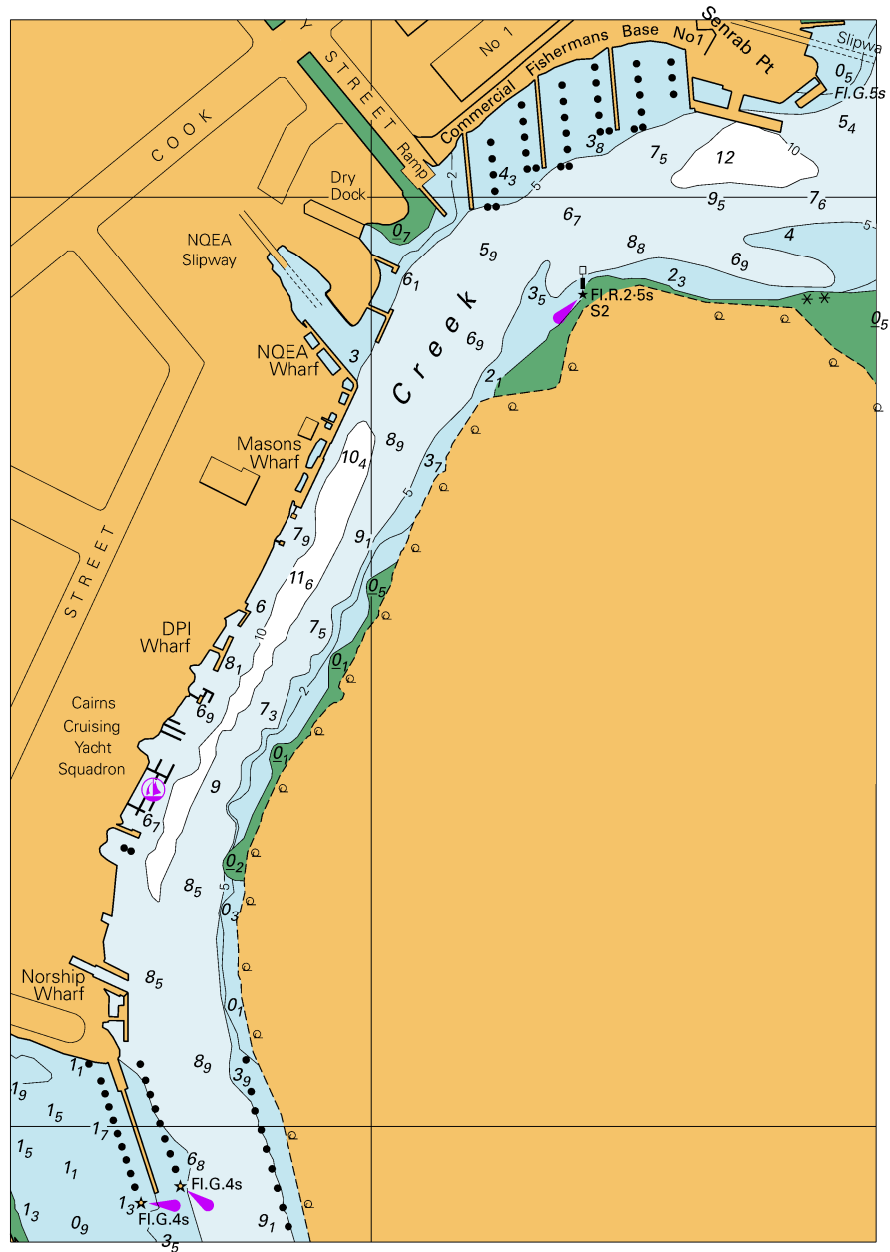


© Commonwealth of Australia 2019

Block for chart Aus 701

(84.8 x 46.7mm)

To accompany Australian Notice to Mariners 378/2019

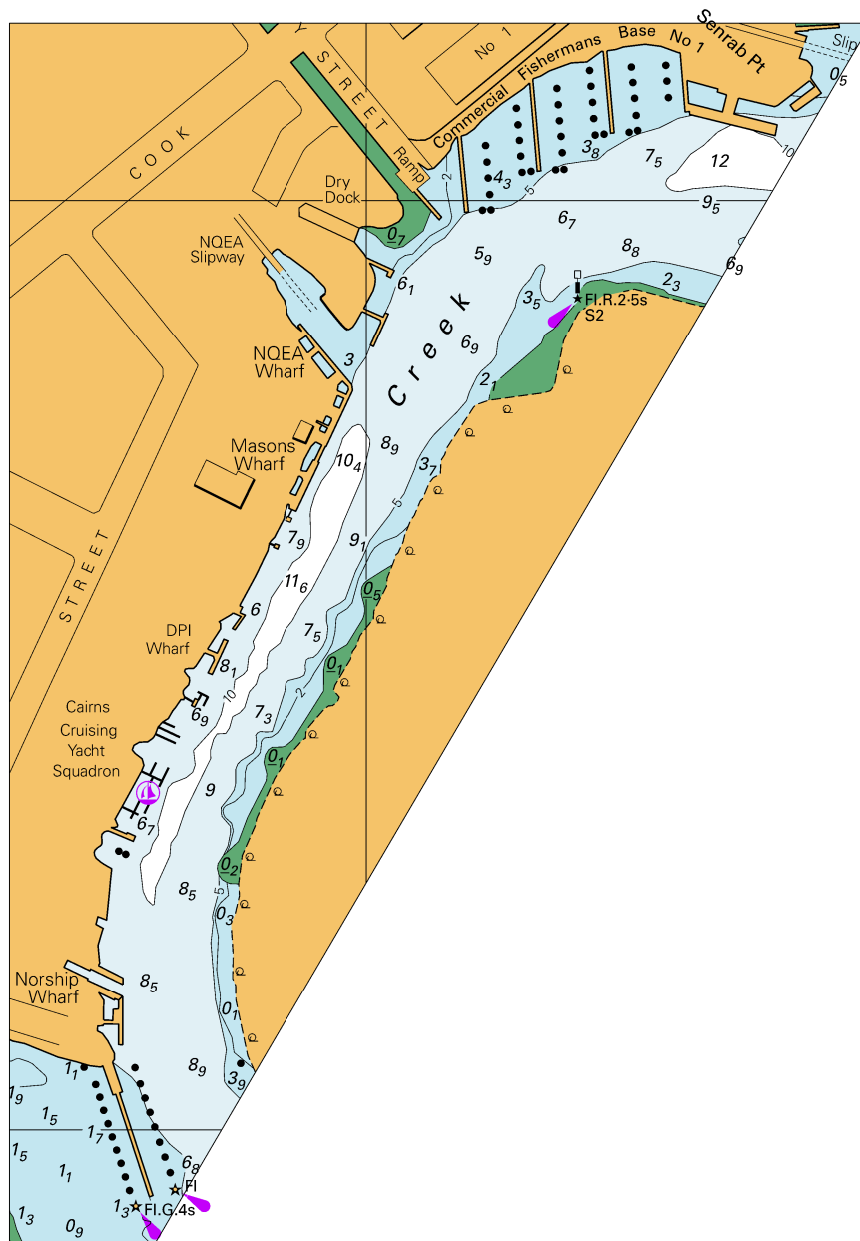


Block for chart Aus 263

© Commonwealth of Australia 2019

(114.5 x 161.7mm)

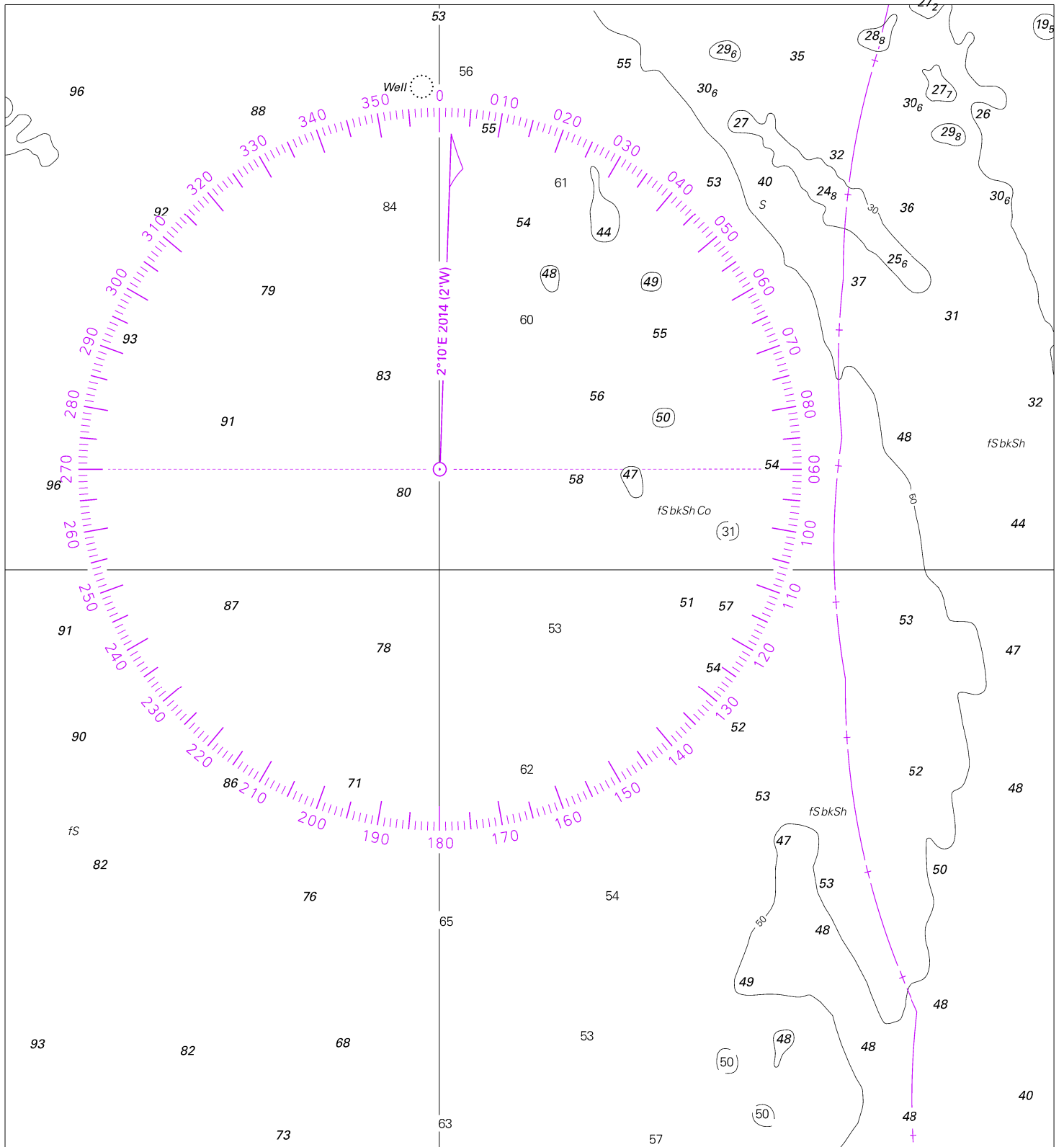
To accompany Australian Notice to Mariners 378/2019



Block for chart Aus 264 © Commonwealth of Australia 2019

(113.9 x 161.7mm)  
{ 19.1

To accompany Australian Notice to Mariners 382/2019

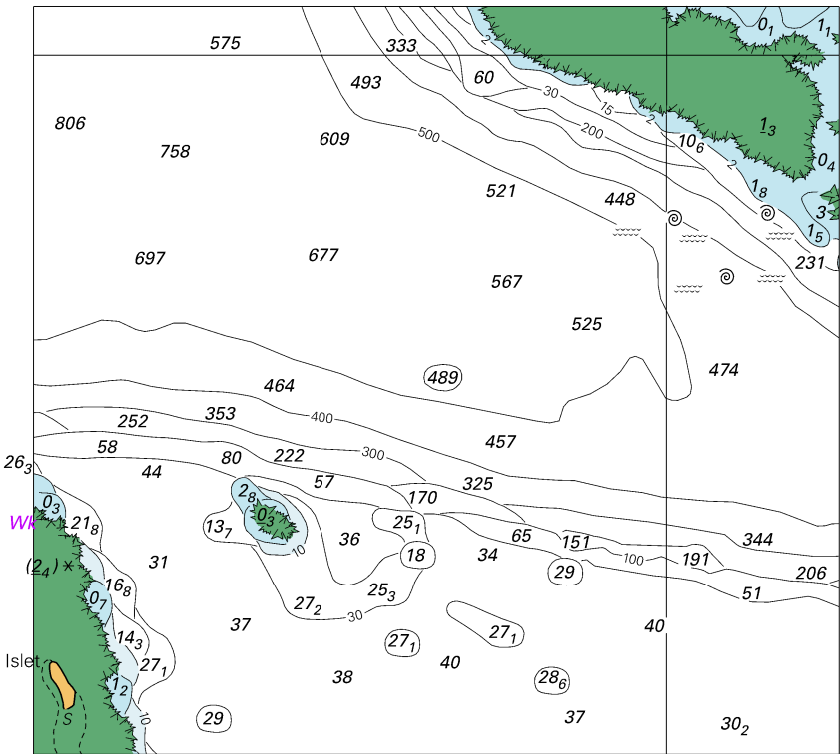


Block for chart Aus 324

© Commonwealth of Australia 2019

(192.6 x 210.1mm)

*To accompany Australian Notice to Mariners 384/2019*



*Block for chart Aus 43*

© Commonwealth of Australia 2019

(106.5 x 98.9mm)