



8 March 2019

Edition 5

AUSTRALIAN NOTICES TO MARINERS

Notices 202 - 253

Published fortnightly by the Australian Hydrographic Office



Australian Notices to Mariners are the authority for correcting charts and publications published by the Australian Hydrographic Office covering Australia, Papua New Guinea, Solomon Islands, Australian Antarctic Territory and Timor-Leste.

Commodore F.T. FREEMAN RAN
Hydrographer of Australia

SECTIONS.

- I. Australian Notices to Mariners, including blocks and notes.
- II. Hydrographic Reports.
- III. Navigational Warnings.

SUPPLEMENTS.

- I. Tracings
- II. Cumulative List of Australian Notices to Mariners.
- III. Cumulative List of Temporary and Preliminary Australian Notices to Mariners.
- IV. Temporary and Preliminary Notices in force.
- V. Amendments to Admiralty List of Lights and Fog Signals (Vol K), Radio Signals (NP 281(2), 282, 283(2), 285, 286(4)) and Sailing Directions (NP 9, 13, 14, 15, 33, 34, 35, 36, 39, 44, 51, 60, 61, 62, 100, 136).

© Commonwealth of Australia 2019

This work is copyright. Apart from any use permitted under the Copyright Act 1968, no part may be reproduced by any process, adapted, communicated or commercially exploited without prior written permission from The Commonwealth represented by the Australian Hydrographic Office.

IMPORTANT NOTICE

This edition of Notices to Mariners includes all significant information affecting AHO products which the AHO has become aware of since the last edition. All reasonable efforts have been made to ensure the accuracy and completeness of the information, including third party information, on which these updates are based. The AHO regards third parties from which it receives information as reliable, however the AHO cannot verify all such information and errors may therefore exist. The AHO does not accept liability for errors in third party information.

GENERAL INSTRUCTIONS

The substance of these notices should be inserted on the charts affected.

Bearings are referred to the true compass and are reckoned clockwise from North; those relating to lights are given as seen by an observer from seaward.

Positions quoted in notices relate to WGS84 which is the horizontal datum for all charts produced by the Australian Hydrographic Office.

The range quoted for a light is its nominal range.

Depths are with reference to the chart datum of each chart. Heights are above mean high water springs or mean higher high water, as appropriate.

The capital letter (P) or (T) after the number of any notice denotes a preliminary or temporary notice respectively, which are contained separately at the end of the permanent notices.

REPORTING OF DANGERS

Mariners are particularly requested to notify the AUSTRALIAN HYDROGRAPHIC OFFICE, Locked Bag 8801 Wollongong, NSW 2500 (Fax 02-4223 6599, e-mail datacentre@hydro.gov.au or, alternatively by filling in and submitting the [Hydrographic Notes](#) forms located on the web site – www.hydro.gov.au), immediately on the discovery of new dangers or suspected dangers to navigation. For changes or defects in aids to navigation notify AusSAR (Fax 02-6230 6868 or email rccaus@amsa.gov.au).

AUTHORISED USE

Copies of Australian notices are available free of charge from the Australian Hydrographic Office (AHO) website (www.hydro.gov.au) and through the eNotices (email) service (www.hydro.gov.au/enotices/enotices.htm).

Individual Notices may be copied for the purpose of inserting Notice substance on official charts and publications. Paper copies may be printed by chart agents and distributed to customers on a cost recovery basis. Participating chart agents are listed on the AHO website as providing a 'Paper Notices to Mariners' service (www.hydro.gov.au/webapps/jsp/agents/agents-list.jsp). Copies of the notices may not be sold for profit without prior written agreement.

NUMERICAL INDEX OF NOTICES TO MARINERS

Edition No 5

Notices	Aus Chart, INT Chart, ENC Cell, AHP, BA Pubs
202	Aus 59, 60, 111, 114, 642, 646
203	Products - New Charts, New Editions, Withdrawn Charts
204	Aus 202
205	Aus 201
206	Aus 4635, INT 635
207	Aus 817
208	Aus 270
209	Aus 6, 303
210	Aus 833
211	Aus 220, 813, 814
212	Aus 490
213	Aus 674, 677
214	Aus 24, 26, 27
215	Aus 109
216	Aus 114, 117
217	Aus 81
218	Aus 53, 326, 739, 740
219	Aus 52, 53
220	Aus 4070, 4074, 4710, INT 70, 74, 710
221	Aus 780
222	Aus 137
223	Aus 602, INT 9032
224	Aus 798
225(T)	Aus 811
226(T)	Aus 200, 202
227(T)	Aus 200, 202
228(P)	Aus 200, 201, 202
229(T)	Aus 192
230(T)	Aus 269
231(T)	Aus 6
232(T)	Aus 6
233(T)	Aus 6
234(T)	Aus 269
235(T)	Aus 256
236(T)	Aus 257
237(T)	Aus 257
238(T)	Aus 256, 257, 827
239(T)	Aus 257
240(T)	Aus 257
241(T)	Aus 257
242(T)	Aus 4
243(T)	Aus 523, 642, 643
244(T)	Aus 662
245(T)	Aus 391
246(T)	Aus 379, 505, 621
247(T)	Aus 309, 722, 4721, INT 721
248(T)	Aus 28
249(T)	Aus 312
250(T)	Aus 327, 742, 4723, INT 723
251(T)	Aus 154
252(T)	Aus 172
253(T)	Aus 168

NUMERICAL INDEX OF CHARTS AFFECTED

Edition No 5

Aus Chart	Notices
Aus 4	242(T)
Aus 6	209 , 231(T) , 232(T) , 233(T)
Aus 24	214
Aus 26	214
Aus 27	214
Aus 28	248(T)
Aus 52	219
Aus 53	218 , 219
Aus 59	202
Aus 60	202
Aus 81	217
Aus 109	215
Aus 111	202
Aus 114	202 , 216
Aus 117	216
Aus 137	222
Aus 154	251(T)
Aus 168	253(T)
Aus 172	252(T)
Aus 192	229(T)
Aus 200	226(T) , 227(T) , 228(P)
Aus 201	205 , 228(P)
Aus 202	204 , 226(T) , 227(T) , 228(P)
Aus 220	211
Aus 256	235(T) , 238(T)
Aus 257	236(T) , 237(T) , 238(T) , 239(T) , 240(T) , 241(T)
Aus 269	230(T) , 234(T)
Aus 270	208
Aus 303	209
Aus 309	247(T)
Aus 312	249(T)
Aus 326	218
Aus 327	250(T)
Aus 379	246(T)
Aus 391	245(T)
Aus 490	212
Aus 505	246(T)
Aus 523	243(T)
Aus 602	223
Aus 621	246(T)
Aus 642	202 , 243(T)
Aus 643	243(T)
Aus 646	202
Aus 662	244(T)
Aus 674	213
Aus 677	213
Aus 722	247(T)
Aus 739	218
Aus 740	218
Aus 742	250(T)
Aus 780	221
Aus 798	224
Aus 811	225(T)
Aus 813	211

Aus Chart	Notices
Aus 814	211
Aus 817	207
Aus 827	238(T)
Aus 833	210
Aus 4070	220
Aus 4074	220
Aus 4635	206
Aus 4710	220
Aus 4721	247(T)
Aus 4723	250(T)

INT Chart	Notices
INT 9032	223
INT 70	220
INT 74	220
INT 635	206
INT 710	220
INT 721	247(T)
INT 723	250(T)

202 AUSTRALIA - Products - New Charts and New Editions to be published shortly

Australian Hydrographic Office

New Charts to be published shortly

<i>Chart</i>	<i>Title</i>	<i>Scale</i>	<i>Expected Publication Date</i>	<i>Remarks</i>
PNG 642	Papua New Guinea - North East Coast - Port of Lae	1:7 500	22 Mar 2019	Adoption of Papua New Guinea chart numbering. Replaces Aus 642. General updating throughout including latest bathymetric surveys.
PNG 646	Papua New Guinea - North Coast - Approaches to Madang Plan: Madang Harbour	1:37 500 1:7 500	22 Mar 2019	Adoption of Papua New Guinea chart numbering. Replaces Aus 646. General updating throughout including latest bathymetric surveys.
Aus 59	Australia - North West Coast - Western Australia - Port of Dampier (Northern Sheet)	1:10 000	22 Mar 2019	General updating throughout including latest bathymetric surveys.
Aus 60	Australia - North West Coast - Western Australia - Port of Dampier (Southern Sheet) Plan: Kaiser Marina	1:10 000 1:10 000	22 Mar 2019	General updating throughout including latest bathymetric surveys.

New Editions to be published shortly

<i>Chart</i>	<i>Title</i>	<i>Scale</i>	<i>Expected Publication Date</i>	<i>Remarks</i>
NIL				

Charts to be withdrawn

<i>Chart</i>	<i>Remarks</i>
Aus 642	On publication of new chart PNG 642
Aus 646	On publication of new chart PNG 646

Charts to be withdrawn without replacement in June 2019

<i>Chart</i>	<i>Title</i>	<i>Scale</i>	<i>Publication Date</i>
Aus 111 Edition 3	Australia - West Coast - Western Australia - Careening Bay and Approaches Inset: Sulphur Bay	1:7 500 1:7 500	6 November 2015
Aus 114 Edition 4	Australia - West Coast - Western Australia - Kwinana Inset: Kwinana Grain Jetty	1:12 500 1:12 500	6 November 2015

203 AUSTRALIA - Products - New Charts, New Editions, Withdrawn Charts

Australian Hydrographic Office , UKHO

New Charts

Chart	Title and Geographical limits	Scale	Publication Date	Remarks
NIL				

New Electronic Navigation Chart (Aus ENC)

Cell Name	Title	Publication Date	Remarks
NIL			

New Editions and Withdrawn Charts

Chart	Title	Scale	Publication Date	Remarks
NIL				

Admiralty publication

NP No	Title	Date	Remarks
NP34 & e-NP34	Admiralty Sailing Directions. Indonesia Pilot Volume 2 (Ninth Edition) 2019.	7/3/2019	The Eighth Edition 2017 of NP36 is cancelled.

Chart permanently withdrawn

Charts listed above as withdrawn no longer meet chart carriage requirements and should be marked as "superseded" and replaced with the new chart/ new edition listed prior to passage through the area covered by the new chart.

When placing orders with a chart agent between notice of forthcoming edition and its publication, mariners should advise whether their order pertains to the current edition or the new edition.

For further details refer to the AHO website at www.hydro.gov.au for new edition and new chart stock arrival information.

204 AUSTRALIA - NEW SOUTH WALES - Port Jackson - Balls Head Bay - Light buoys

Royal Australian Navy

Aus 202 [NE 14/12/2018]

Insert	special cylindrical light buoy, Fl. Y. 4s, without topmark	33° 50'.553 S	151° 11'.547 E
	special cylindrical light buoy, Fl. Y. 4s, without topmark	33° 50'.424 S	151° 11'.496 E

205 AUSTRALIA - NEW SOUTH WALES - Port Jackson - Georges Head - Light buoy

Port Authority of New South Wales

Aus 201 [1110/2018]

Delete	light buoy	33° 50'.48 S	151° 15'.87 E
--------	------------	--------------	---------------

206 AUSTRALIA - QUEENSLAND - Bundaberg - Aeronautical light

Australian Hydrographic Office

Aus 4635 (INT 635) [906/2018]

Delete	aeronautical light	24° 54'.2 S	152° 19'.5 E
--------	--------------------	-------------	--------------

207 AUSTRALIA - QUEENSLAND - Hervey Bay - Wreck; mooring buoy

Former Notice - 578(T)/2018 is cancelled

Maritime Safety Queensland Notice 97(T)/2019

Aus 817 [52/2019]

Insert	depth, 10 ₉ m, enclosed by danger circle with legend, Wk	24° 53'.03 S	152° 48'.04 E
	lit cylindrical yellow mooring buoy, Fl. Y. 5s	24° 52'.80 S	152° 48'.20 E
Delete	depth, 24 ₃ m	24° 53'.0 S	152° 47'.9 E

208 AUSTRALIA - QUEENSLAND - Howick Group - Tidal stream

UKHO

Aus 270 (Howick Group) [NE 22/2/2019]

Insert	accompanying block	14° 34'.00 S	144° 45'.78 E
Replace	tidal stream data, desig C, with tidal stream data, desig A	14° 29'.5 S	144° 56'.7 E

209 AUSTRALIA - QUEENSLAND - Karumba - Nav aids

Ports North

Aus 6 [273/2018]

Insert	red cylindrical topmark	17° 25'.532 S	140° 43'.174 E
	light beacon, <i>Fl.Y.2.5s</i> , with special topmark	17° 26'.435 S	140° 44'.908 E
Replace	light beacon with light beacon, <i>F.Bu (F Day)</i> , without topmark	17° 26'.81 S	140° 45'.53 E
	light beacon with light beacon, <i>F.Bu (F Day)</i> , without topmark	17° 27'.17 S	140° 46'.18 E
	light beacon with light beacon, <i>F.Bu (F Day)</i> , without topmark	17° 26'.75 S	140° 44'.81 E
	light buoy with special cylindrical light buoy, <i>Fl.Y.4s</i> , with topmark	17° 29'.77 S	140° 49'.40 E
Amend	light beacon to <i>F.Bu & Fl.G.4s (F Day) No9</i>	17° 26'.71 S	140° 45'.25 E
	light buoy to <i>Fl.G.2s No17</i>	17° 26'.70 S	140° 46'.91 E
	light buoy to <i>Fl.R.2s No18</i>	17° 26'.66 S	140° 46'.95 E
Delete	structure colour, Y	17° 26'.66 S	140° 46'.73 E
	light beacon	17° 26'.62 S	140° 45'.02 E

Aus 6 (Karumba) [273/2018]

Insert	lit yellow cylindrical mooring buoy, <i>Q.R</i>	17° 29'.452 S	140° 49'.891 E
	lit red barrel mooring buoy, <i>Q.R</i>	17° 29'.523 S	140° 49'.813 E
Replace	light buoy with special cylindrical light buoy, <i>Fl.Y.4s No31</i> , with topmark	17° 29'.77 S	140° 49'.40 E
Move	light buoy	17° 28'.75 S	140° 50'.19 E
	to	17° 28'.762 S	140° 50'.174 E
Delete	lit mooring buoy	17° 29'.44 S	140° 49'.90 E
	lit mooring buoy	17° 29'.51 S	140° 49'.82 E

Aus 303 [604/2018]

Insert	red cylindrical topmark	17° 25'.53 S	140° 43'.17 E
Replace	light beacon with light beacon, <i>F.Bu (F Day)</i> , without topmark	17° 26'.8 S	140° 45'.5 E
	light beacon with light beacon, <i>F.Bu (F Day)</i> , without topmark	17° 27'.2 S	140° 46'.2 E

210 AUSTRALIA - QUEENSLAND - Pison Islets - Chart limits

Australian Hydrographic Office

Aus 833 [1006/2018]

Insert	magenta limit, with legend Aus 270 in SE corner, between	14° 11'.00 S	144° 26'.70 E
		14° 05'.60 S	144° 26'.70 E
		14° 05'.60 S	144° 36'.50 E
		14° 11'.00 S	144° 36'.50 E
		14° 11'.00 S	144° 26'.70 E
Delete	magenta limit, with legend Aus 270, centred on	14° 08'.5 S	144° 32'.0 E

211 AUSTRALIA - QUEENSLAND - Point Danger - Light

Australian Hydrographic Office

Aus 220 (Tweed River Entrance) [1111/2018]

Insert	light, <i>Captain Cook Memorial Tower (floodlit) Fl(2)10s 44m 10M</i> , with sector <i>W 170° - 330° (160°)</i>	28° 09'.900 S	153° 33'.045 E
--------	-----------------------------------------------------------------------------------------------------------------	---------------	----------------

Delete	light and obscured sector	28° 09'.91 S	153° 33'.03 E
--------	---------------------------	--------------	---------------

Aus 813 [853/2018]

Insert	light sector, <i>W 170° - 330° (160°)</i> , emanating from light	28° 09'.90 S	153° 33'.05 E
--------	------------------------------------------------------------------	--------------	---------------

Amend	light to <i>Fl(2)10s 44m 10M</i>	28° 09'.9 S	153° 33'.0 E
-------	----------------------------------	-------------	--------------

Delete	obscured light sector, emanating from light	28° 09'.9 S	153° 33'.0 E
--------	---------------------------------------------	-------------	--------------

Aus 814 [1119/2018]

Insert	light sector, <i>W 170° - 330° (160°)</i> , emanating from light	28° 09'.90 S	153° 33'.05 E
--------	------------------------------------------------------------------	--------------	---------------

Amend	light to <i>Fl(2)10s 44m 10M</i>	28° 09'.9 S	153° 33'.0 E
-------	----------------------------------	-------------	--------------

Delete	obscured light sector, emanating from light	28° 09'.9 S	153° 33'.0 E
--------	---------------------------------------------	-------------	--------------

212 AUSTRALIA - QUEENSLAND - Swain Reefs - Nomenclature

Great Barrier Reef Marine Park Authority

Aus 490 [52/2019]

Insert	name <i>Joe Baker Reef</i> , centred on	20° 44'.94 S	151° 08'.99 E
--------	-----------------------------------------	--------------	---------------

213 PAPUA NEW GUINEA - Kimbe - Light beacon; pilot boarding place

National Maritime Safety Authority PNG

Aus 674 [960/2017]

Move	pilot boarding place	5° 30'.5 S	150° 13'.1 E
	to	5° 30'.50 S	150° 13'.50 E

Aus 677 (Kimbe) [960/2017]

Replace	beacon with port lateral light beacon, <i>Fl(3)R.12s 6m 3M</i> , without topmark	5° 32'.99 S	150° 09'.05 E
---------	----------------------------------------------------------------------------------	-------------	---------------

214 AUSTRALIA - NORTHERN TERRITORY - Darwin - Middle Arm to Frances Bay - Mooring buoys withdrawn; light buoy

Department of Infrastructure, Planning and Logistics NT Notices 8/2019, 9/2019

Aus 24 [158/2019]

Insert	east cardinal spar light buoy, <i>Q(3)10s</i> , with topmark	12° 27'.168 S	130° 51'.173 E
--------	--------------------------------------------------------------	---------------	----------------

Aus 26 [158/2019]

Delete	lit mooring buoy	12° 32'.49 S	130° 50'.50 E
	lit mooring buoy	12° 32'.51 S	130° 50'.37 E
	lit mooring buoy	12° 32'.59 S	130° 50'.33 E

Aus 27 [348/2018]

Delete	lit mooring buoy	12° 32'.49 S	130° 50'.50 E
	lit mooring buoy	12° 32'.51 S	130° 50'.37 E
	lit mooring buoy	12° 32'.59 S	130° 50'.33 E

215 AUSTRALIA - WESTERN AUSTRALIA - Albany - Light withdrawn

Southern Ports Authority - Port of Albany

Aus 109 [244/2018]

Delete	light	35° 02'.10 S	117° 53'.74 E
--------	-------	--------------	---------------

216 AUSTRALIA - WESTERN AUSTRALIA - Fremantle - Naval waters

Royal Australian Navy

Aus 114 [1020/2018]

Insert	magenta dashed line with legend, <i>Naval Waters</i> , between	32° 10'.025 S	115° 46'.047 E
		32° 10'.100 S	115° 45'.757 E

Aus 117 [109/2019]

Insert	magenta dashed line with legend, <i>Naval Waters</i> , between	32° 10'.025 S	115° 46'.047 E
		32° 10'.100 S	115° 45'.757 E

217 AUSTRALIA - WESTERN AUSTRALIA - Geraldton - Bluff Point - Wreck

Australian Hydrographic Office

Aus 81 [NE 14/12/2018]

Insert	depth, 7,m, enclosed by danger circle with legend <i>Wk</i>	28° 44'.617 S	114° 36'.383 E
--------	-------------------------------------------------------------	---------------	----------------

Delete	wreck	28° 44'.67 S	114° 36'.39 E
--------	-------	--------------	---------------

218 AUSTRALIA - WESTERN AUSTRALIA - Port Hedland - Spoil ground; depths
Pilbara Ports Authority

Aus 53 [619/2018]

Insert	dashed line with legend <i>Spoil Ground</i> , between	20° 13'.53 S	118° 28'.63 E
		20° 11'.84 S	118° 28'.62 E
		20° 11'.84 S	118° 27'.51 E
		20° 13'.54 S	118° 27'.53 E
		20° 13'.53 S	118° 28'.63 E
	out of position depth, 5m, enclosed by contour	20° 13'.25 S	118° 28'.31 E
	depth, 4 ₆ m, enclosed by contour (a)	20° 13'.44 S	118° 27'.65 E
	depth, 8 ₄ m (b)	20° 13'.40 S	118° 28'.51 E
	depth, 7 ₁ m (c)	20° 12'.63 S	118° 28'.47 E
	depth, 5 ₃ m (d), and contour to enclose (a), (b), (c) and (d)	20° 12'.42 S	118° 27'.64 E
Delete	depth, 12m	20° 12'.8 S	118° 27'.7 E
	depth, 11 ₂ m	20° 13'.4 S	118° 27'.6 E

Aus 326 [1078/2018]

Insert	contour, between	20° 12'.92 S	118° 26'.07 E
		20° 12'.25 S	118° 27'.61 E
		20° 12'.57 S	118° 30'.95 E
Replace	depth, 11 ₂ m, with depth, 4 ₆ m, enclosed by contour	20° 13'.4 S	118° 27'.6 E
Delete	contour, between	20° 12'.9 S	118° 26'.1 E
		20° 12'.6 S	118° 30'.9 E

Aus 739 [486/2018]

Insert	depth, 4 ₆ m, enclosed by contour (a)	20° 13'.44 S	118° 27'.65 E
	depth, 8 ₄ m (b)	20° 13'.40 S	118° 28'.51 E
	depth, 7 ₁ m (c)	20° 12'.63 S	118° 28'.47 E
	depth, 5 ₃ m (d), and contour to enclose (a), (b), (c) and (d)	20° 12'.42 S	118° 27'.64 E
	depth, 5m, enclosed by contour	20° 13'.25 S	118° 28'.31 E
Delete	depth, 12 ₄ m	20° 12'.7 S	118° 28'.8 E

Aus 740 [NE 29/6/2018]

Insert	depth, 4 ₆ m, enclosed by contour (a)	20° 13'.44 S	118° 27'.65 E
	depth, 8 ₄ m (b)	20° 13'.40 S	118° 28'.51 E
	depth, 7 ₁ m (c)	20° 12'.63 S	118° 28'.47 E
	depth, 5 ₃ m (d), and contour to enclose (a), (b), (c) and (d)	20° 12'.42 S	118° 27'.64 E
	depth, 5m, enclosed by contour	20° 13'.25 S	118° 28'.31 E
Delete	depth, 12 ₄ m	20° 12'.7 S	118° 28'.8 E

219 AUSTRALIA - WESTERN AUSTRALIA - Port Hedland - Depths
Australian Hydrographic Office

Aus 52 [619/2018]

Insert	accompanying block	20° 08'.85 S	118° 31'.27 E
--------	--------------------	--------------	---------------

Aus 53 [218/2019]

Insert	accompanying block	20° 08'.85 S	118° 32'.10 E
--------	--------------------	--------------	---------------

220 INDIAN OCEAN - South East Indian Ridge - Depth
JAMSTEC

Aus 4070 (INT 70) [360/2017]

Insert depth, 1873m, enclosed by contour 40° 55'.5 S 092° 16'.8 E

Aus 4074 (INT 74) [602/2018]

Insert depth, 1873m, enclosed by contour 40° 55'.5 S 092° 16'.8 E

Aus 4710 (INT 710) [1032/2012]

Insert depth, 1873m, enclosed by contour 40° 55'.5 S 092° 16'.8 E

221 AUSTRALIA - SOUTH AUSTRALIA - Backstairs Passage - Depths
Royal Australian Navy

Aus 780 [488/2018]

Insert accompanying block 35° 26'.0 S 138° 03'.4 E
accompanying ZOC diagram 35° 47'.2 S 136° 48'.4 E

222 AUSTRALIA - SOUTH AUSTRALIA - Port Adelaide - Naval waters
Royal Australian Navy

Aus 137 [1025/2018]

Insert magenta dashed line with legend, *Naval Waters*, between
34° 46'.868 S 138° 30'.797 E
34° 46'.883 S 138° 30'.886 E
34° 47'.487 S 138° 30'.739 E
34° 47'.469 S 138° 30'.641 E

223 SOUTHERN OCEAN - Davis - Rocks
Royal Australian Navy

Aus 602 (INT 9032) [1033/2012]

Insert rock which covers and uncovers
danger line 68° 34'.634 S 077° 57'.834 E
68° 34'.579 S 77° 57'.795 E
68° 34'.677 S 77° 57'.754 E

Delete depth, 0₄m 68° 34'.64 S 077° 57'.83 E

224 AUSTRALIA - TASMANIA - Furneaux Group - Territorial sea baseline
Australian Hydrographic Office

Aus 798 [165/2019]

Insert straight territorial sea baseline with base points, between
40° 26'.18 S 147° 57'.23 E
40° 29'.83 S 148° 01'.15 E
40° 32'.62 S 148° 04'.80 E

225(T)/2019 AUSTRALIA - NEW SOUTH WALES - Perpendicular Point - Light buoy off station
Parks Australia

The special light buoy, *Fl. Y. 1-5s* (31° 40'.85 S 152° 54'.61 E), is off station.

Chart temporarily affected - Aus 811

226(T)/2019 AUSTRALIA - NEW SOUTH WALES - Port Jackson - Dawes Point - Harbour works completed
Former Notice - 323(T)/2018 is cancelled
HMAS *Yarra* , Port Authority of New South Wales

Cancel this notice on receipt.

Chart formerly affected - Aus 200 - Aus 202

227(T)/2019 AUSTRALIA - NEW SOUTH WALES - Port Jackson - Seafourth Bluff to Manns Point - Scientific instruments recovered
Former Notice - 706(T)/2017 is cancelled
Port Authority of New South Wales

Cancel this notice on receipt.

Chart formerly affected - Aus 200 - Aus 202

228(P)/2019 AUSTRALIA - NEW SOUTH WALES - Port Jackson - Taylors Bay - Wreck
Port Authority of New South Wales

Latest surveys indicate that the wreck in position 33° 50'.86 S 151° 15'.00 E is shoaler than charted, with a least depth of *8.8m*.

Chart which will be affected - Aus 200 - Aus 201 - Aus 202

229(T)/2019 AUSTRALIA - NEW SOUTH WALES - Twofold Bay - Eden - Harbour works
Carnival Australia

Works associated with the extension of Fishermans Wharf are in progress in the vicinity of position 37° 04'.47 S 149° 54'.37 E.

Mariners are advised to navigate with caution in the area.

Chart temporarily affected - Aus 192

230(T)/2019 AUSTRALIA - QUEENSLAND - Airlie Beach - Muddy Bay - Wreck salvaged; light buoy removed
Former Notice - 1028(T)/2018 is cancelled
Maritime Safety Queensland

Cancel this notice on receipt.

Chart formerly affected - Aus 269

231(T)/2019 AUSTRALIA - QUEENSLAND - Karumba - Shoaling
Former Notice - 67(T)/2016 is cancelled
Maritime Safety Queensland Notice 91(T)/2019

Cancel this notice on receipt.

Chart formerly affected - Aus 6

232(T)/2019 AUSTRALIA - QUEENSLAND - Karumba - Dredging operations completed

Former Notice - 363(T)/2018 is cancelled
Maritime Safety Queensland

Cancel this notice on receipt.

Chart formerly affected - Aus 6**233(T)/2019 AUSTRALIA - QUEENSLAND - Karumba - Shoaling; shipping channel**

Former Notice - 685(T)/2018 is cancelled
Maritime Safety Queensland Notice 283/2018, 107(T)/2019

Shoaling exists in the entrance channel between beacon No8 (17° 26'.36 S 140° 44'.73 E) and beacon No10 (17° 26'.65 S 140° 45'.32 E).

Mariners are advised that the shipping channel between beacon No8 and beacon No10 is now south of the charted channel and should use the following waypoints and courses to remain in the centre of the dredged area:

Steer course 118° (T) to waypoint 17° 26'.449 S 140° 44'.827 E;
then steer 133° (T) to waypoint 17° 26'.590 S 140° 44'.985 E;
then steer 118° (T) to waypoint 17° 26'.669 S 140° 45'.134 E;
then steer 097° (T) to waypoint 17° 26'.686 S 140° 45'.274 E;
then steer 090° (T) to waypoint 17° 26'.687 S 140° 46'.466 E;
then steer 084° (T) to waypoint 17° 26'.584 S 140° 46'.591 E.

Mariners are advised to navigate with caution in the area.

Chart temporarily affected - Aus 6**234(T)/2019 AUSTRALIA - QUEENSLAND - Shute Harbour - Wreck salvaged**

Former Notice - 123(T)/2019 is cancelled
Maritime Safety Queensland

Cancel this notice on receipt.

Chart formerly affected - Aus 269**235(T)/2019 AUSTRALIA - QUEENSLAND - Townsville - Cleveland Bay - Diving operations completed**

Former Notice - 756(T)/2017 is cancelled
Maritime Safety Queensland

Cancel this notice on receipt.

Chart formerly affected - Aus 256**236(T)/2019 AUSTRALIA - QUEENSLAND - Townsville - Ross River Channel - Dredging operations**

Maritime Safety Queensland Notice 93(T)/2019

Vessels *Max Hooper*, *Eric Netterfield* and *Allan Ticehurst* are conducting dredging operations in the Ross River Channel (19° 15'.64 S 146° 50'.57 E).

Barge *Max Hooper* will be anchored at the edge of the channel at night and will display appropriate lights and shapes.

Mariners are advised to navigate with caution in the area.

Chart temporarily affected - Aus 257**237(T)/2019 AUSTRALIA - QUEENSLAND - Townsville - Ross River Channel - Dredging operations completed**

Former Notice - 572(T)/2017 is cancelled
Maritime Safety Queensland

Cancel this notice on receipt.

Chart formerly affected - Aus 257

238(T)/2019 AUSTRALIA - QUEENSLAND - Townsville - Dredging operations completed

Former Notice - 642(T)/2018 is cancelled
Maritime Safety Queensland

Cancel this notice on receipt.

Chart formerly affected - Aus 256 - Aus 257 - Aus 827

239(T)/2019 AUSTRALIA - QUEENSLAND - Townsville - Ross Creek - Harbour works completed

Former Notice - 838(T)/2017 is cancelled
Maritime Safety Queensland

Cancel this notice on receipt.

Chart formerly affected - Aus 257

240(T)/2019 AUSTRALIA - QUEENSLAND - Townsville - Harbour works completed

Former Notice - 469(T)/2016 is cancelled
Maritime Safety Queensland

Cancel this notice on receipt.

Chart formerly affected - Aus 257

241(T)/2019 AUSTRALIA - QUEENSLAND - Townsville - Harbour works completed

Former Notice - 513(T)/2016 is cancelled
Maritime Safety Queensland

Cancel this notice on receipt.

Chart formerly affected - Aus 257

242(T)/2019 AUSTRALIA - QUEENSLAND - Weipa - South Channel - Light restored

Former Notice - 179(T)/2019 is cancelled
Maritime Safety Queensland

Cancel this notice on receipt.

Chart formerly affected - Aus 4

243(T)/2019 PAPUA NEW GUINEA - Huon Gulf - Lae to Tami Islands - Survey operations completed

Former Notice - 979(T)/2016 is cancelled
National Maritime Safety Authority PNG Notice 45(T)/2016

Cancel this notice on receipt.

Chart formerly affected - Aus 523 - Aus 642 - Aus 643

244(T)/2019 PAPUA NEW GUINEA - Lombrum Bay - Lights unlit

National Maritime Safety Authority PNG Notices 7/2019, 8/2019

The lights, *Q.G.5m 4M* (2° 02'.49 S 147° 22'.48 E), and *Fl.2.5s 7m 10M* (2° 02'.34 S 147° 24'.21) E are unlit.

Chart temporarily affected - Aus 662

245(T)/2019 PAPUA NEW GUINEA - Manus Island - Light unlit

National Maritime Safety Authority PNG Coastal Navigation Warning 10/2019

The light, *Fl.R.3s 4M* (2° 04'.91 S 147° 18'.28 E) is unlit.

Chart temporarily affected - Aus 391

246(T)/2019 PAPUA NEW GUINEA - Vabukori - Light unlit

National Maritime Safety Authority PNG Notice 9/2019

The rear lead light, Oc. 6s 90m 10M (9° 29'.79 S 147° 11'.34 E), is unlit.

Chart temporarily affected - Aus 379 - Aus 505 - Aus 621**247(T)/2019 AUSTRALIA - NORTHERN TERRITORY - Beagle Gulf - Drill rig moved***Former Notice - 1092(T)/2018 is cancelled*MODU *Noble Tom Prosser*

Cancel this notice on receipt.

Chart formerly affected - Aus 309 - Aus 722 - Aus 4721 (INT 721)**248(T)/2019 AUSTRALIA - NORTHERN TERRITORY - East Arm - Lights***Former Notice - 894(T)/2015 is cancelled*

Department of Transport NT

Cancel this notice on receipt.

Chart formerly affected - Aus 28**249(T)/2019 AUSTRALIA - TIMOR SEA - Sahul Banks - Drill rig**

Eni Australia Ltd

Drill rig, *Maersk Deliverer* is conducting drilling operations in position 10° 43'.61 S 126° 16'.63 E.**Chart temporarily affected - Aus 312****250(T)/2019 AUSTRALIA - WESTERN AUSTRALIA - Dampier Archipelago - Drill rig northwestwards**MODU *Noble Tom Prosser*Drill rig *Noble Tom Prosser* is conducting drilling operations in position 20° 07'.07 S 116° 03'.63 E.**Chart temporarily affected - Aus 327 - Aus 742 - Aus 4723 (INT 723)****251(T)/2019 AUSTRALIA - VICTORIA - Port Phillip - Yarra River - Victoria Harbour - Light beacons relit***Former Notice - 44(T)/2019 is cancelled*

Parks Victoria Notice 42(T)/2019

Cancel this notice on receipt.

Chart formerly affected - Aus 154**252(T)/2019 AUSTRALIA - TASMANIA - River Derwent - Geilston Bay - Wreck**

Marine and Safety Tasmania Notice 42/2019

A stranded wreck exists in position 42° 50'.44 S 147° 20'.35 E.

Chart temporarily affected - Aus 172

253(T)/2019 AUSTRALIA - TASMANIA - River Tamar - Kings Wharf - Dredging operations
Marine and Safety Tasmania Notice M41/2019

Dredging operations are in progress at Kings Wharf (41° 25'.72 S 147° 07'.43 E).

A pipeline marked by special buoys and red lights exists on the eastern edge of the channel.

Mariners are advised to navigate with caution in the area.

Chart temporarily affected - Aus 168

II

HYDROGRAPHIC REPORTS

NIL

III

NAVIGATION WARNINGS

The Australian Hydrographic Office will no longer compile Section III of the Australian Notices to Mariners. For the most up to date navigation warnings please refer to:

AMSA Navigation Warnings

<http://amsa.gov.au/search-and-rescue/distress-and-safety-comms/msi/msi-email/index.asp>

New Zealand Notices to Mariners (Navarea XIV warnings)

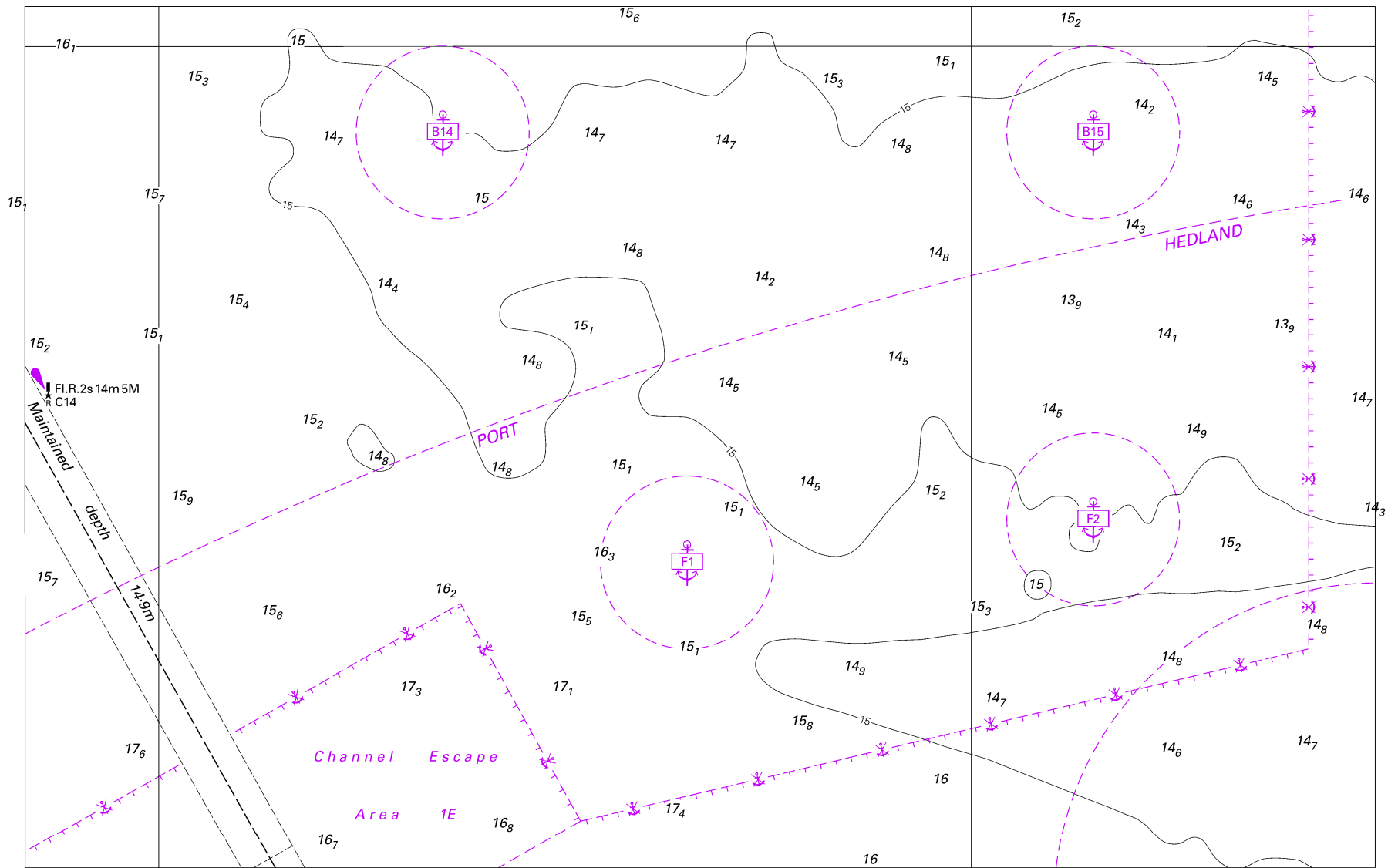
<http://www.linz.govt.nz/sea/maritime-safety/notices-mariners>

To accompany Australian Notice to Mariners 208/2019

Tidal Streams referred to HW at LEGGATT ISLAND						
Hours		Geographical Position		A 14°29.5 S 144°56.7 E		
14°45.00'E 14°34.80'S	Before High Water	6	Directions of streams (degrees) Rates at spring tides (knots) Rates at neap tides (knots)	- 6	303	0.1 0.0
	5			- 5	258	0.2 0.0
	4			- 4	252	0.3 0.0
	3			- 3	271	0.3 0.0
	2			- 2	317	0.3 0.0
	1			- 1	300	0.4 0.0
	High Water			0	090	0.1 0.0
	After High Water	1		+1	113	0.3 0.0
	2			+2	127	0.4 0.0
	3			+3	110	0.3 0.0
	4			+4	070	0.1 0.0
	5			+5	040	0.1 0.0
	6			+6	258	0.1 0.0

© Commonwealth of Australia 2019
Block for chart Aus 270 (60.9 x 55.3mm)

To accompany Australian Notice to Mariners 219/2019

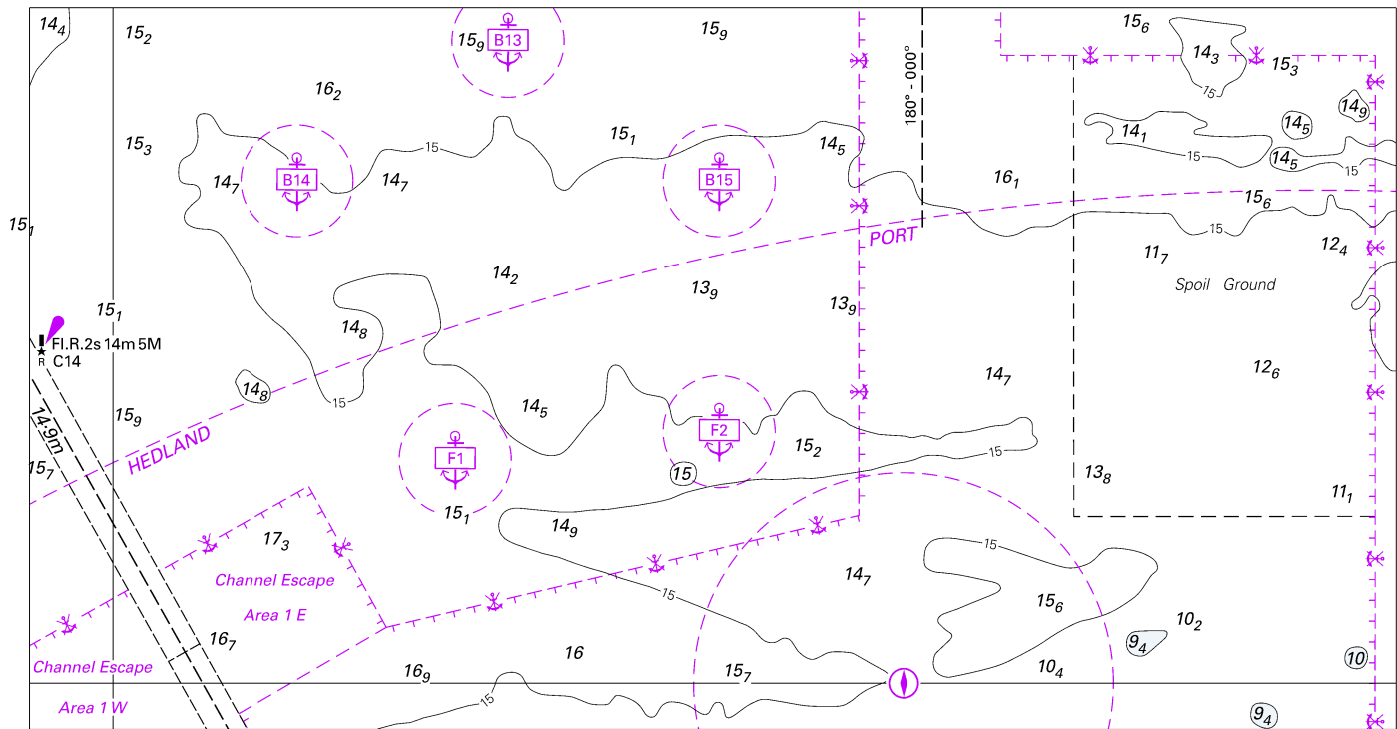


Block for chart Aus 52

© Commonwealth of Australia 2019

(231.6 x 147.8mm)

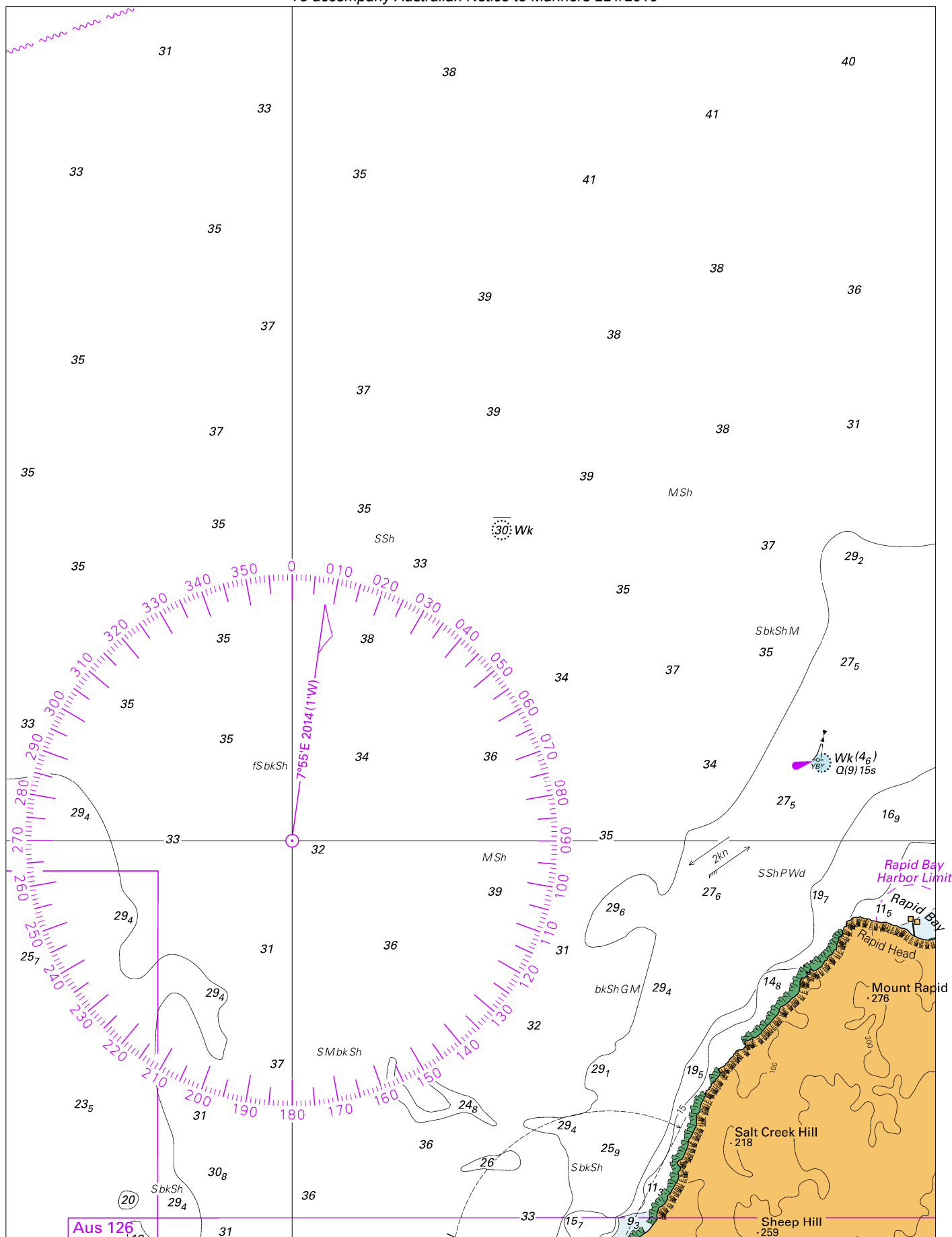
To accompany Australian Notice to Mariners 219/2019



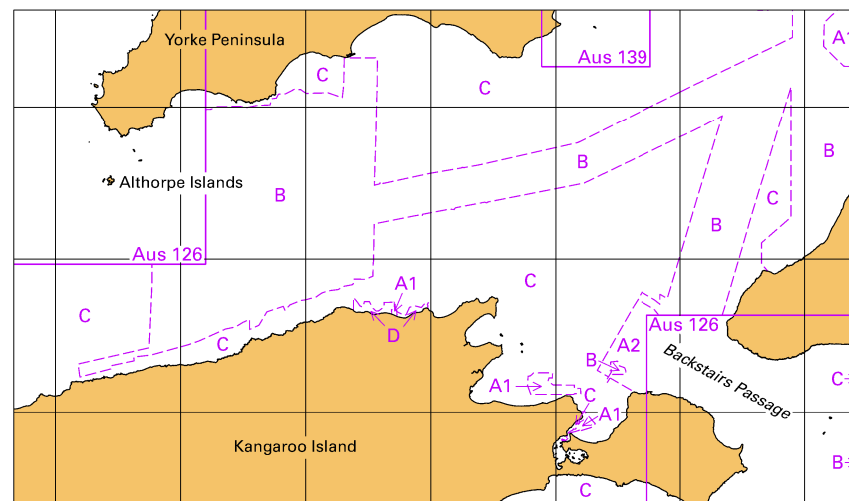
Block for chart Aus 53

© Commonwealth of Australia 2019

(180.7 x 95.4mm)



To accompany Australian Notice to Mariners 221/2019



© Commonwealth of Australia 2019

Block B for Chart Aus 780

(111.8 x 65.4mm)