



8 February 2019

Edition 3

# AUSTRALIAN NOTICES TO MARINERS

## Notices 98 - 142

Published fortnightly by the Australian Hydrographic Office



Australian Notices to Mariners are the authority for correcting charts and publications published by the Australian Hydrographic Office covering Australia, Papua New Guinea, Solomon Islands, Australian Antarctic Territory and Timor-Leste.

Commodore F.T. FREEMAN RAN  
*Hydrographer of Australia*

---

### SECTIONS.

- I. Australian Notices to Mariners, including blocks and notes.
- II. Hydrographic Reports.
- III. Navigational Warnings.

### SUPPLEMENTS.

- I. Tracings
- II. Cumulative List of Australian Notices to Mariners.
- III. Cumulative List of Temporary and Preliminary Australian Notices to Mariners.
- IV. Temporary and Preliminary Notices in force.
- V. Amendments to Admiralty List of Lights and Fog Signals (Vol K), Radio Signals (NP 281(2), 282, 283(2), 285, 286(4)) and Sailing Directions (NP 9, 13, 14, 15, 33, 34, 35, 36, 39, 44, 51, 60, 61, 62, 100, 136).

---

© Commonwealth of Australia 2019

This work is copyright. Apart from any use permitted under the Copyright Act 1968, no part may be reproduced by any process, adapted, communicated or commercially exploited without prior written permission from The Commonwealth represented by the Australian Hydrographic Office.

## IMPORTANT NOTICE

This edition of Notices to Mariners includes all significant information affecting AHO products which the AHO has become aware of since the last edition. All reasonable efforts have been made to ensure the accuracy and completeness of the information, including third party information, on which these updates are based. The AHO regards third parties from which it receives information as reliable, however the AHO cannot verify all such information and errors may therefore exist. The AHO does not accept liability for errors in third party information.

---

## GENERAL INSTRUCTIONS

The substance of these notices should be inserted on the charts affected.

Bearings are referred to the true compass and are reckoned clockwise from North; those relating to lights are given as seen by an observer from seaward.

Positions quoted in notices relate to WGS84 which is the horizontal datum for all charts produced by the Australian Hydrographic Office.

The range quoted for a light is its nominal range.

Depths are with reference to the chart datum of each chart. Heights are above mean high water springs or mean higher high water, as appropriate.

The capital letter (P) or (T) after the number of any notice denotes a preliminary or temporary notice respectively, which are contained separately at the end of the permanent notices.

---

## REPORTING OF DANGERS

Mariners are particularly requested to notify the AUSTRALIAN HYDROGRAPHIC OFFICE, Locked Bag 8801 Wollongong, NSW 2500 (Fax 02-4223 6599, e-mail [datacentre@hydro.gov.au](mailto:datacentre@hydro.gov.au) or, alternatively by filling in and submitting the [Hydrographic Notes](#) forms located on the web site – [www.hydro.gov.au](http://www.hydro.gov.au)), immediately on the discovery of new dangers or suspected dangers to navigation. For changes or defects in aids to navigation notify AusSAR (Fax 02-6230 6868 or email [rccaus@amsa.gov.au](mailto:rccaus@amsa.gov.au)).

---

## AUTHORISED USE

Copies of Australian notices are available free of charge from the Australian Hydrographic Office (AHO) website ([www.hydro.gov.au](http://www.hydro.gov.au)) and through the eNotices (email) service ([www.hydro.gov.au/enotices/enotices.htm](http://www.hydro.gov.au/enotices/enotices.htm)).

Individual Notices may be copied for the purpose of inserting Notice substance on official charts and publications. Paper copies may be printed by chart agents and distributed to customers on a cost recovery basis. Participating chart agents are listed on the AHO website as providing a 'Paper Notices to Mariners' service ([www.hydro.gov.au/webapps/jsp/agents/agents-list.jsp](http://www.hydro.gov.au/webapps/jsp/agents/agents-list.jsp)). Copies of the notices may not be sold for profit without prior written agreement.

## NUMERICAL INDEX OF NOTICES TO MARINERS

### Edition No 3

Notices	Aus Chart, INT Chart, ENC Cell, AHP, BA Pubs
98	Aus 270, 280, 281
99	Products - New Charts, New Editions, Withdrawn Charts
100	Bureau of Meteorology
101	Aus 821
102	Aus 260, 367, 822
103	Aus 267
104	Aus 830, 831
105	Aus 701
106	Aus 651
107	Aus 20, 309, 722
108	Aus 68
109	Aus 117, 754
110	Aus 73
111	Aus 328, 329, 744
112	Aus 759
113	Aus 152
114	Aus 177
115	SLB 102
116(T)	Aus 237, 238
117(T)	Aus 237
118(P)	Aus 260, 261, 367, 822
119(T)	Aus 235
120(T)	Aus 235, 236, 814, 815
121(T)	Aus 236
122(T)	Aus 256
123(T)	Aus 269
124(T)	Aus 230
125(T)	Aus 256, 257, 827, 828
126(T)	Aus 257
127(T)	Aus 519, 520, 4620, 4621, INT 620, 621
128(T)	Aus 389, 651, 4622, INT 622
129(T)	Aus 25, 26, 28
130(T)	Aus 314, 4721, 4722, INT 721, 722
131(T)	Aus 328, 4723, 4725, INT 723, 725
132(T)	Aus 57, 327, 741, 742
133(T)	Aus 327, 741
134(T)	Aus 327, 741, 742
135(T)	Aus 116
136(T)	Aus 357
137(T)	Aus 357, 487
138(T)	Aus 164
139(T)	Aus 173
140(T)	Aus 171, 796
141(T)	Aus 4623, 4634, INT 623, 634, SLB 201, 304
142(T)	SLB 102

# NUMERICAL INDEX OF CHARTS AFFECTED

## Edition No 3

Aus Chart	Notices
Aus 20	107
Aus 25	129(T)
Aus 26	129(T)
Aus 28	129(T)
Aus 57	132(T)
Aus 68	108
Aus 73	110
Aus 116	135(T)
Aus 117	109
Aus 152	113
Aus 164	138(T)
Aus 171	140(T)
Aus 173	139(T)
Aus 177	114
Aus 230	124(T)
Aus 235	119(T), 120(T)
Aus 236	120(T), 121(T)
Aus 237	116(T), 117(T)
Aus 238	116(T)
Aus 256	122(T), 125(T)
Aus 257	125(T), 126(T)
Aus 260	102, 118(P)
Aus 261	118(P)
Aus 267	103
Aus 269	123(T)
Aus 270	98
Aus 280	98
Aus 281	98
Aus 309	107
Aus 314	130(T)
Aus 327	132(T), 133(T), 134(T)
Aus 328	111, 131(T)
Aus 329	111
Aus 357	136(T), 137(T)
Aus 367	102, 118(P)
Aus 389	128(T)
Aus 487	137(T)
Aus 519	127(T)
Aus 520	127(T)
Aus 651	106, 128(T)
Aus 701	105
Aus 722	107
Aus 741	132(T), 133(T), 134(T)
Aus 742	132(T), 134(T)
Aus 744	111
Aus 754	109
Aus 759	112
Aus 796	140(T)
Aus 814	120(T)
Aus 815	120(T)
Aus 821	101
Aus 822	102, 118(P)
Aus 827	125(T)
Aus 828	125(T)

Aus Chart	Notices
Aus 830	104
Aus 831	104
Aus 4620	127(T)
Aus 4621	127(T)
Aus 4622	128(T)
Aus 4623	141(T)
Aus 4634	141(T)
Aus 4721	130(T)
Aus 4722	130(T)
Aus 4723	131(T)
Aus 4725	131(T)
SLB 102	115, 142(T)
SLB 201	141(T)
SLB 304	141(T)

INT Chart	Notices
INT 620	127(T)
INT 621	127(T)
INT 622	128(T)
INT 623	141(T)
INT 634	141(T)
INT 721	130(T)
INT 722	130(T)
INT 723	131(T)
INT 725	131(T)

**98 AUSTRALIA - Products - New Charts and New Editions to be published shortly**

Australian Hydrographic Service

**New Charts to be published shortly**

<i>Chart</i>	<i>Title</i>	<i>Scale</i>	<i>Expected Publication Date</i>	<i>Remarks</i>
NIL				

**New Editions to be published shortly**

<i>Chart</i>	<i>Title</i>	<i>Scale</i>	<i>Expected Publication Date</i>	<i>Remarks</i>
AUS 270	Australia - East Coast - Queensland - Plans in Queensland (sheet 2) Plans: Approaches to Heath Reef Cape Melville to Pipon Islands Cooktown Cape Flattery Wharf Howick Group Port Douglas	1:50 000 1:75 000 1:10 000 1:10 000 1:50 000 1:10 000	22 February 2019	New edition with general updating throughout; including latest bathymetric data. Produced with blue contours.
AUS 280	Australia - East Coast - Queensland - Plans in Queensland (sheet 3) Plans: Maggie Reef to Eden Reef Flinders Group	1:75 000 1:50 000	22 February 2019	New edition with general updating throughout; including latest bathymetric data.
AUS 281	Australia - East Coast - Queensland - First Three Mile Opening to Cape Direction	1:75 000	22 February 2019	New edition with general updating throughout; including latest bathymetric data

**Charts withdrawn without replacement in May 2019**

<i>Chart</i>	<i>Title</i>	<i>Scale</i>	<i>Publication Date</i>
Aus 52	Australia - North West Coast - Western Australia -	1:25 000	24 October 2014
<b>Edition 3</b>	Entrance Channel to Port Hedland		
Aus 58	Australia - North West Coast - Western Australia -	1:37 500	2 December 2016
<b>Edition 8</b>	Port of Dampier		

**99 AUSTRALIA - Products - New Charts, New Editions, Withdrawn Charts**

Australian Hydrographic Office

**New Charts**

Chart	Title and Geographical limits	Scale	Publication Date	Remarks
NIL				

**New Electronic Navigation Chart (Aus ENC)**

Cell Name	Title	Publication Date	Remarks
NIL			

**New Editions and Withdrawn Charts**

Chart	Title	Scale	Publication Date	Remarks
NIL				

**Chart permanently withdrawn**

Charts listed above as withdrawn no longer meet chart carriage requirements and should be marked as "superseded" and replaced with the new chart/ new edition listed prior to passage through the area covered by the new chart.

When placing orders with a chart agent between notice of forthcoming edition and its publication, mariners should advise whether their order pertains to the current edition or the new edition.

For further details refer to the AHO website at [www.hydro.gov.au](http://www.hydro.gov.au) for new edition and new chart stock arrival information.

**100 AUSTRALIA - Bureau of Meteorology**

Australian Bureau of Meteorology

From 6 February 2019, the Bureau of Meteorology will provide high seas forecast and ocean wind warning services for a new area 'Southern' extending from 50°S to 65°S, and between 80°E and 160°E. Ocean wind warnings will be issued as needed and updated every 6 hours. Forecasts for the Southern area will be broadcast with existing high seas meteorological bulletins: 1100 UTC and 2300 UTC on Inmarsat SafetyNET via the APAC satellite.

**101 AUSTRALIA - QUEENSLAND - Hydrographers Passage - ZOC Diagram**

Australian Hydrographic Office

**Aus 821 [1067/2018]**

Insert	accompanying block	20° 23' S	150° 31' E
--------	--------------------	-----------	------------

**102 AUSTRALIA - QUEENSLAND - Lingham Island to Jeffreys Rocks - Depths**

LADS Flight

**Aus 260 [1112/2014]**

Replace	depth, 4 <sub>2</sub> m, with depth, 2m, enclosed by contour	22° 13'.0 S	150° 17'.1 E
---------	--	-------------	--------------

**Aus 367 [908/2018]**

Insert	depth, 4 <sub>6</sub> m, semi enclosed by contour to E	21° 59'.79 S	150° 13'.40 E
	depth, 18m, semi enclosed by contour to NE	21° 54'.30 S	150° 14'.53 E
	depth, 17 <sub>6</sub> m, and extend contour E to enclose	21° 57'.01 S	150° 14'.83 E

Replace	depth, 4 <sub>2</sub> m, with depth, 2m, and extend contour W to enclose	22° 13'.0 S	150° 17'.1 E
---------	--	-------------	--------------

Delete	depth, 7 <sub>3</sub> m	21° 59'.6 S	150° 13'.6 E
--------	-------------------------	-------------	--------------

**Aus 822 [951/2018]**

Insert	depth, 4 <sub>6</sub> m, and extend contour E to enclose	21° 59'.79 S	150° 13'.40 E
	depth, 18m, enclosed by contour	21° 54'.30 S	150° 14'.53 E

Replace	depth, 4 <sub>2</sub> m, with depth, 2m, enclosed by contour	22° 13'.0 S	150° 17'.1 E
	depth, 20 <sub>1</sub> m, with depth, 17 <sub>6</sub> m, and extend contour SE to enclose	21° 57'.0 S	150° 14'.8 E

Delete	depth, 20 <sub>1</sub> m	21° 54'.5 S	150° 14'.7 E
--------	--------------------------	-------------	--------------

**103 AUSTRALIA - QUEENSLAND - Lucinda - Nav aids**

Maritime Safety Queensland

**Aus 267 [55/2019]**

Insert	port lateral spar buoy, No6, without topmark	18° 31'.013 S	146° 19'.200 E
	port lateral spar buoy, No8, without topmark	18° 31'.038 S	146° 19'.157 E

Move	light buoy	18° 31'.30 S	146° 20'.00 E
	to	18° 31'.279 S	146° 20'.003 E
	light buoy	18° 31'.25 S	146° 19'.75 E
	to	18° 31'.258 S	146° 19'.757 E

Delete	buoy	18° 31'.08 S	146° 19'.15 E
	buoy	18° 31'.10 S	146° 19'.13 E

**104 AUSTRALIA - QUEENSLAND - Noggin Passage to Trinity Opening - Depths**

LADS Flight

**Aus 830 [1113/2018]**

Insert	depth, 8 <sub>6</sub> m, enclosed by contour	17° 06'.97 S	146° 24'.87 E
	depth, 8 <sub>6</sub> m, enclosed by contour	16° 52'.99 S	146° 15'.24 E
	depth, 9 <sub>2</sub> m, enclosed by contour	16° 32'.11 S	145° 59'.88 E
	depth, 7 <sub>9</sub> m, enclosed by contour	16° 26'.31 S	146° 00'.63 E

Delete	depth, 35m	17° 06'.9 S	146° 24'.8 E
	depth, 13 <sub>4</sub> m	16° 26'.4 S	146° 00'.4 E

**Aus 831 [1007/2018]**

Insert	depth, 7 <sub>9</sub> m, enclosed by contour	16° 26'.31 S	146° 00'.63 E
--------	--	--------------	---------------

Delete	depth, 13 <sub>4</sub> m	16° 26'.4 S	146° 00'.4 E
--------	--------------------------	-------------	--------------

**105 AUSTRALIA - QUEENSLAND - Skardon River - Light buoy moved**

Transshipment Services Australia

**Aus 701 [7/2019]**

Move	light buoy	11° 46'.1 S	141° 56'.8 E
	to	11° 45'.74 S	141° 56'.89 E

**106 PAPUA NEW GUINEA - Kairiru Island - Victoria Bay - Wreck**

Fugro

**Aus 651 [956/2018]**

Insert	depth, 24 <sub>7</sub> m, enclosed by danger circle with legend, <i>Wk</i>	3° 19'.65 S	143° 30'.82 E
--------	--	-------------	---------------

**107 AUSTRALIA - NORTHERN TERRITORY - Clarence Strait - Marine farms**

Department of Infrastructure, Planning and Logistics NT

**Aus 20 [600/2017]**

Insert	dashed line and marine farm symbol with legend, ( <i>see Note</i> ), between	11° 59'.90 S	130° 51'.20 E
		11° 59'.90 S	130° 54'.00 E
		12° 01'.40 S	130° 54'.00 E
		12° 01'.40 S	130° 51'.20 E

**Aus 309 [13/2019]**

Insert	marine farm symbol	12° 03'.17 S	130° 49'.75 E
	marine farm symbol	12° 00'.65 S	130° 52'.50 E

**Aus 722 [11/2019]**

Insert	dashed line and marine farm symbol with legend, ( <i>see Note</i> ), between	12° 03'.83 S	130° 48'.48 E
		12° 03'.83 S	130° 51'.02 E
		12° 02'.51 S	130° 51'.02 E
		12° 02'.51 S	130° 48'.48 E
		12° 03'.83 S	130° 48'.48 E
	dashed line and marine farm symbol with legend, ( <i>see Note</i> ), between	12° 01'.40 S	130° 51'.00 E
		12° 01'.40 S	130° 54'.00 E
		11° 59'.90 S	130° 54'.00 E
		11° 59'.90 S	130° 51'.00 E
		12° 01'.40 S	130° 51'.00 E

**108 AUSTRALIA - WESTERN AUSTRALIA - Cape Preston - Mooring buoys**

Cape Preston Port Company

**Aus 68 [1080/2018]**

Insert	lit yellow barrel mooring buoy, <i>Fl. Y. 4s</i>	20° 49'.90 S	116° 10'.17 E
	lit yellow barrel mooring buoy, <i>Fl. Y. 4s</i>	20° 49'.90 S	116° 10'.48 E
	out of position lit yellow barrel mooring buoy, <i>Fl. Y. 4s</i>	20° 49'.90 S	116° 10'.76 E
	lit yellow barrel mooring buoy, <i>Fl. Y. 4s</i>	20° 46'.48 S	116° 11'.74 E
	lit yellow barrel mooring buoy, <i>Fl. Y. 4s</i>	20° 47'.02 S	116° 13'.55 E

**Aus 68 (Cape Preston) [1080/2018]**

Insert	lit yellow barrel mooring buoy, <i>Fl. Y. 4s</i>	20° 49'.867 S	116° 11'.335 E
	lit yellow barrel mooring buoy, <i>Fl. Y. 4s</i>	20° 49'.248 S	116° 11'.772 E

**109 AUSTRALIA - WESTERN AUSTRALIA - Carnac Island - Nav aids**

Department of Transport WA

**Aus 117 [1020/2018]**

Insert	special spar light buoy, <i>Fl. Y. 3s 5M</i> , without topmark	32° 06'.886 S	115° 39'.848 E
--------	--	---------------	----------------

Amend	bearing to 109.5°	32° 08'.01 S	115° 37'.93 E
-------	-------------------	--------------	---------------

Delete	light buoy	32° 06'.91 S	115° 39'.79 E
--------	------------	--------------	---------------

**Aus 754 [NE 13/7/2018]**

Replace	light buoy with special spar light buoy, <i>Fl. Y. 3s</i> , without topmark	32° 06'.9 S	115° 39'.8 E
---------	---	-------------	--------------

Amend	bearing to 109.5°	32° 07'.8 S	115° 37'.4 E
-------	-------------------	-------------	--------------



**110 AUSTRALIA - WESTERN AUSTRALIA - Carnarvon - Light**  
Department of Transport WA

**Aus 73 (Carnarvon) [1127/2018]**

Delete	light beacon	24° 53'.04 S	113° 37'.81 E
--------	--------------	--------------	---------------

**111 AUSTRALIA - WESTERN AUSTRALIA - Murion Islands - Pipeline northwestwards**  
Woodside Energy Ltd

**Aus 328 [720/2018]**

Insert	supply pipeline with legend, Oil/Gas (see Note), between	21° 31'.59 S	113° 50'.37 E
		21° 30'.29 S	113° 52'.88 E
		21° 27'.24 S	113° 54'.88 E
		21° 26'.15 S	113° 58'.59 E
		21° 25'.02 S	114° 00'.18 E
		21° 24'.94 S	114° 03'.43 E
		21° 25'.20 S	114° 04'.22 E
		21° 25'.74 S	114° 04'.86 E
		21° 26'.40 S	114° 04'.75 E
		21° 27'.55 S	114° 02'.57 E

**Aus 329 [720/2018]**

Insert	supply pipeline with legend, Oil/Gas (see Note), between	21° 31'.59 S	113° 50'.37 E
		21° 30'.29 S	113° 52'.88 E
		21° 27'.24 S	113° 54'.88 E
		21° 26'.15 S	113° 58'.59 E
		21° 25'.02 S	114° 00'.18 E
		21° 24'.94 S	114° 03'.43 E
		21° 25'.20 S	114° 04'.22 E
		21° 25'.74 S	114° 04'.86 E
		21° 26'.40 S	114° 04'.75 E
		21° 27'.55 S	114° 02'.57 E

**Aus 744 [720/2018]**

Insert	supply pipeline, between	21° 26'.22 S	114° 04'.33 E
		21° 26'.40 S	114° 04'.75 E
		21° 25'.74 S	114° 04'.86 E
		21° 25'.20 S	114° 04'.22 E
		21° 24'.94 S	114° 03'.43 E
		21° 25'.02 S	114° 00'.18 E
		21° 25'.15 S	114° 00'.00 E
	supply pipeline, between	21° 27'.55 S	114° 02'.60 E
		21° 26'.59 S	114° 04'.01 E
		21° 26'.32 S	114° 04'.02 E
	supply pipeline, between	21° 25'.01 S	114° 03'.31 E
		21° 25'.02 S	114° 03'.46 E
		21° 25'.33 S	114° 04'.04 E
		21° 25'.77 S	114° 04'.05 E
	magenta legend, Oil/Gas (see Note)	21° 24'.96 S	114° 01'.61 E

**112 AUSTRALIA - WESTERN AUSTRALIA - Ratcliffe Bay - Depths**  
Fugro LADS Corporation

**Aus 759 [1130/2018]**

Insert	accompanying block	35° 02'.00 S	117° 20'.00 E
--------	--------------------	--------------	---------------

**113 AUSTRALIA - VICTORIA - Western Port - Stony Point - Nav aids**  
Victorian Regional Channels Authority Notice 363/2018

**Aus 152 (Hanns Inlet) [572/2018]**

Insert	accompanying block	38° 22'.2 S	145° 13'.7 E
--------	--------------------	-------------	--------------

**114 AUSTRALIA - TASMANIA - Macquarie Harbour - Historic wrecks**

Australian Hydrographic Office

On certain copies only.

**Aus 177 (Strahan) [1027/2018]**

Insert accompanying block

42° 09'.23 S

145° 19'.39 E

**Aus 177 (Hells Gates) [1027/2018]**

Insert magenta legend, *Historic Wk (see Note)*, centred on  
 magenta legend, *Historic Wk (see Note)*, centred on  
 accompanying chart note

42° 12'.494 S

145° 12'.567 E

42° 12'.270 S

145° 12'.869 E

42° 14'.0 S

145° 12'.4 E

**115 SOLOMON ISLANDS - Swinger Channel - Nav aids**

Australian Hydrographic Office

**SLB 102 (Blackett Strait) [920/2018]**

Insert accompanying block

8° 17'.5 S

157° 12'.5 E

**116(T)/2019 AUSTRALIA - QUEENSLAND - Brisbane River - Lytton - Lights altered**

Maritime Safety Queensland Notice 26(T)/2019

The day lights associated with leading lights *,Iso.Bu.2s (F.Y Day) No5R* (27° 25'.24 S 153° 08'.67 E) and *Q.Bu (F.Y Day) No5F* (27° 25'.03 S 153° 08'.75 E). are undergoing trials and different characteristics to those charted may be displayed.

Mariners are advised to navigate with caution in the area.

**Chart temporarily affected - Aus 237 - Aus 238**

**117(T)/2019 AUSTRALIA - QUEENSLAND - Brisbane River - Luggage Point - Harbour works**

Maritime Safety Queensland Notice 20(T)/2019

The barges *Maeve Anne* and *Aquila*, MT *Bhagwan Jackal* and support vessels are conducting works associated with the construction of the new Brisbane International Cruise Terminal in the vicinity of position 27° 22'.79 S 153° 09'.46 E.

An exclusion zone marked by special light buoys, *Fl.Y.6s*, exists around the works.

All vessels will monitor VHF Ch12.

Mariners are advised to keep clear of the works and navigate with caution in the area.

**Chart temporarily affected - Aus 237**

**118(P)/2019 AUSTRALIA - QUEENSLAND - Holt Island to Hexham Island - Shoaling**

LADS Flight

Latest survey shows shoaler depths than those charted may exist in areas bounded by the following positions:

22° 11'.75 S 150° 22'.51 E  
 22° 11'.90 S 150° 22'.99 E  
 22° 13'.77 S 150° 22'.25 E  
 22° 13'.51 S 150° 21'.60 E;  
 and  
 22° 00'.22 S 150° 23'.51 E  
 22° 01'.04 S 150° 23'.61 E  
 22° 02'.68 S 150° 18'.70 E  
 22° 01'.44 S 150° 16'.29 E  
 22° 00'.19 S 150° 21'.01 E.

Mariners are advised to navigate with caution in the area.

Charts will be updated in due course.

**Chart which will be affected - Aus 260 - Aus 261 - Aus 367 - Aus 822**

**119(T)/2019 AUSTRALIA - QUEENSLAND - Mooloolaba - Shoaling***Former Notice - 75(T)/2019 is cancelled*

Maritime Safety Queensland Notice 30(T)/2019

Cancel this notice on receipt.

**Chart formerly affected - Aus 235**

**120(T)/2019 AUSTRALIA - QUEENSLAND - Moreton Bay - Inner Freeman Channel - Shoaling**  
Maritime Safety Queensland

Latest survey shows shoaler depths than those charted may exist in an area bounded by the coast and the following positions:

27° 02'.21 S 153° 23'.91 E  
27° 00'.16 S 153° 22'.75 E  
27° 00'.43 S 153° 21'.87 E  
27° 02'.75 S 153° 21'.44 E  
27° 03'.60 S 153° 21'.75 E.

Mariners are advised to navigate with caution in the area.

Charts will be updated in due course.

**Chart temporarily affected - Aus 235 - Aus 236 - Aus 814 - Aus 815**

**121(T)/2019 AUSTRALIA - QUEENSLAND - Moreton Bay - Manly Boat Harbour - Dredging operations**  
*Former Notices* - 635(T)/2018, 928(T)/2018 are cancelled  
Maritime Safety Queensland Notice 33(T)/2019

The barge *IBIS II* and tug *Titan* along with support vessels are conducting dredging operations in the entrance of Manly Boat Harbour (27° 27'.56 S 153° 11'.38 E).

The barges and support craft will monitor VHF Ch 12,13 and 16.

Mariners are advised to navigate with caution in the area.

**Chart temporarily affected - Aus 236**

**122(T)/2019 AUSTRALIA - QUEENSLAND - Nelly Bay - Light beacon unlit**  
Maritime Safety Queensland Notice 37(T)/2019

The light beacon, *Iso.G.2s No3* (19° 09'.69 S 146° 51'.37 E), is unlit.

**Chart temporarily affected - Aus 256**

**123(T)/2019 AUSTRALIA - QUEENSLAND - Shute Harbour - Wreck**  
Maritime Safety Queensland Notice 31(T)/2019

A wreck exists in position 20° 17'.70 S 148° 47'.32 E.

**Chart temporarily affected - Aus 269**

**124(T)/2019 AUSTRALIA - QUEENSLAND - The Broadwater - South Channel - Light buoys**  
Maritime Safety Queensland Notice 35(T)/2019

Special light buoys, *Fl.Y.3s*, exist in the following positions:

27° 56'.56 S 153° 25'.23 E  
27° 56'.63 S 153° 25'.24 E  
27° 56'.71 S 153° 25'.24 E  
27° 56'.86 S 153° 25'.25 E  
27° 56'.92 S 153° 25'.25 E.

**Chart temporarily affected - Aus 230**

**125(T)/2019 AUSTRALIA - QUEENSLAND - Townsville - Obstructions; nav aids off station**

Maritime Safety Queensland Notice 38(T)/2019, 43(T)/2019

Due to recent flooding, floating and submerged obstructions may exist in the waters of Ross River (19° 15'.86 S 146° 50'.38 E) and Cleveland Bay (19° 12'.46 S 146° 55'.13 E), and between the coastline in the Townsville region and the inner Great Barrier Reef (18° 49'.82 S 147° 20'.58 E). Nav aids may also be off station or damaged.

Mariners are advised to navigate with caution in the area.

**Chart temporarily affected - Aus 256 - Aus 257 - Aus 827 - Aus 828**

**126(T)/2019 AUSTRALIA - QUEENSLAND - Townsville - Breakwater Marina Channel - Obstruction**

Maritime Safety Queensland Notice 54(T)/2019

An obstruction marked by a special light buoy, *Fl.Y.4s*, exists in position 19° 14'.77 S 146° 49'.48 E.

A port lateral light buoy, *Q.R*, has been established in position 19° 14'.77 S 146° 49'.49 E.

Mariners are advised to navigate with caution in the area.

**Chart temporarily affected - Aus 257**

**127(T)/2019 PAPUA NEW GUINEA - Cape Nelson - Kanawetu Point - Light restored**

*Former Notice* - 1150(T)/2018 is cancelled

National Maritime Safety Authority PNG Warning 3/2019

Cancel this notice on receipt.

**Chart formerly affected - Aus 519 - Aus 520 - Aus 4620 (INT 620) - Aus 4621 (INT 621)**

**128(T)/2019 PAPUA NEW GUINEA - Unei Island - Light relit**

*Former Notice* - 985(T)/2018 is cancelled

National Maritime Safety Authority PNG Warning 2/2019

Cancel this notice on receipt.

**Chart formerly affected - Aus 389 - Aus 651 - Aus 4622 (INT 622)**

**129(T)/2019 AUSTRALIA - NORTHERN TERRITORY - Darwin - East Arm - Light beacon restored**

*Former Notice* - 81(T)/2019 is cancelled

Department of Infrastructure, Planning and Logistics NT

Cancel this notice on receipt.

**Chart formerly affected - Aus 25 - Aus 26 - Aus 28**

**130(T)/2019 AUSTRALIA - TIMOR SEA - Sahul Banks - Drilling operations completed**

*Former Notice* - 82(T)/2019 is cancelled

MODU Development Driller 1

Cancel this notice on receipt.

**Chart formerly affected - Aus 314 - Aus 4721 (INT 721) - Aus 4722 (INT 722)**

**131(T)/2019 AUSTRALIA - WESTERN AUSTRALIA - Barrow Island - Gas field to be decommissioned westwards**  
 Quadrant Energy

Vessel *Sapura Constructor* and support vessel are conducting works associated with the decommissioning of the East Spar field in an area bounded by the following positions:

20° 44'.79 S 114° 58'.13 E  
 20° 43'.87 S 115° 00'.16 E  
 20° 41'.90 S 114° 59'.16 E  
 20° 42'.82 S 114° 57'.13 E.

A 500m clearance is requested around all vessels.

**Chart temporarily affected - Aus 328 - Aus 4723 (INT 723) - Aus 4725 (INT 725)**

**132(T)/2019 AUSTRALIA - WESTERN AUSTRALIA - Dampier Archipelago - Roly Rock - Drill rig**  
 MODU *ENSCO 107*

Drill rig *Ensko 107* is moored in position 20° 30'.66 S 116° 28'.84 E.

**Chart temporarily affected - Aus 57 - Aus 327 - Aus 741 - Aus 742**

**133(T)/2019 AUSTRALIA - WESTERN AUSTRALIA - Dampier Archipelago - Seismic survey completed**  
*Former Notice - 84(T)/2019 is cancelled*  
 Australian Maritime Safety Authority

Cancel this notice on receipt.

**Chart formerly affected - Aus 327 - Aus 741**

**134(T)/2019 AUSTRALIA - WESTERN AUSTRALIA - Dampier Archipelago - Seismic survey completed northwards**  
*Former Notice - 1097(T)/2018 is cancelled*  
 CGG

Cancel this notice on receipt.

**Chart formerly affected - Aus 327 - Aus 741 - Aus 742**

**135(T)/2019 AUSTRALIA - WESTERN AUSTRALIA - Geographe Bay - Scientific instruments**  
 Department of Transport WA 22(T)/2019

Scientific instruments marked by special spherical light buoys, *Fl.Y.1-5s*, exist in the following positions:

33° 37'.34 S 115° 23'.84 E  
 33° 37'.33 S 115° 23'.75 E  
 33° 37'.50 S 115° 22'.34 E  
 33° 37'.50 S 115° 22'.28 E  
 33° 38'.07 S 115° 22'.40 E  
 33° 38'.08 S 115° 22'.27 E.

**Chart temporarily affected - Aus 116**

**136(T)/2019 AUSTRALIA - VICTORIA - Bass Strait - East Gippsland - Survey operations completed**  
*Former Notice - 41(T)/2018 is cancelled*  
 Maritime Safety Victoria

Cancel this notice on receipt.

**Chart formerly affected - Aus 357**

**137(T)/2019 AUSTRALIA - VICTORIA - Golden Beach - Survey operations**

AGR (Australia) Pty Ltd

On or about 18 February, vessel *Silver Star*, with a 300m towed array, will be conducting a geophysical survey in an area bounded by the following positions:

38° 16'.36 S 147° 28'.92 E  
 38° 15'.74 S 147° 30'.99 E  
 38° 15'.09 S 147° 32'.03 E  
 38° 13'.40 S 147° 30'.31 E  
 38° 14'.10 S 147° 28'.39 E  
 38° 14'.77 S 147° 27'.32 E.

Mariners are advised to navigate with caution in the area.

**Chart temporarily affected - Aus 357 - Aus 487**

**138(T)/2019 AUSTRALIA - TASMANIA - Devonport - Bed levelling**

Tasports, Marine and Safety Tasmania Notice M25/2019

Vessel *EDI* is conducting bed levelling operations in the swing basin and the main channel approaches.

Mariners are advised to navigate with caution in the area.

**Chart temporarily affected - Aus 164**

**139(T)/2019 AUSTRALIA - TASMANIA - Huon River - Killala Bay - Marine farm works completed**

Former Notice - 227(T)/2018 is cancelled

Marine and Safety Tasmania

Cancel this notice on receipt.

**Chart formerly affected - Aus 173**

**140(T)/2019 AUSTRALIA - TASMANIA - Norfolk Bay to Betsey Island - Scientific instruments**

Marine and Safety Tasmania Notice M15/2019

Subsurface scientific instruments exist in the following positions:

43° 00'.19 S 147° 50'.14 E  
 43° 01'.97 S 147° 50'.29 E  
 43° 02'.80 S 147° 48'.52 E  
 43° 02'.68 S 147° 48'.40 E  
 43° 02'.69 S 147° 47'.77 E  
 43° 02'.72 S 147° 47'.54 E  
 43° 02'.77 S 147° 47'.07 E  
 43° 02'.51 S 147° 46'.15 E  
 43° 01'.94 S 147° 46'.10 E  
 43° 01'.91 S 147° 45'.88 E  
 43° 00'.77 S 147° 44'.44 E  
 42° 58'.19 S 147° 44'.27 E  
 42° 52'.36 S 147° 31'.60 E  
 42° 55'.75 S 147° 31'.81 E  
 43° 04'.07 S 147° 28'.89 E.

**Chart temporarily affected - Aus 171 - Aus 796**

**141(T)/2019 SOLOMON ISLANDS - North West Reef - Light beacon unlit**

Solomon Islands Maritime Safety Administration

The light beacon, *Fl(3)15s 10m 5M* (9° 29'.40 S 160° 35'.41 E), is unlit.

**Chart temporarily affected - Aus 4623 (INT 623) - Aus 4634 (INT 634) - SLB 201 - SLB 304**

**142(T)/2019 SOLOMON ISLANDS - Port Noro - Light unreliable**  
Solomon Islands Maritime Safety Administration Notice 1/2019

The light, *Fl.G.1·5s 11m 4M* (8° 15'.42 S 157° 11'.35 E), is unreliable.

**Chart temporarily affected - SLB 102**



II

**HYDROGRAPHIC REPORTS**

NIL

### III

#### **NAVIGATION WARNINGS**

The Australian Hydrographic Office will no longer compile Section III of the Australian Notices to Mariners. For the most up to date navigation warnings please refer to:

AMSA Navigation Warnings

<http://amsa.gov.au/search-and-rescue/distress-and-safety-comms/msi/msi-email/index.asp>

New Zealand Notices to Mariners (Navarea XIV warnings)

<http://www.linz.govt.nz/sea/maritime-safety/notices-mariners>

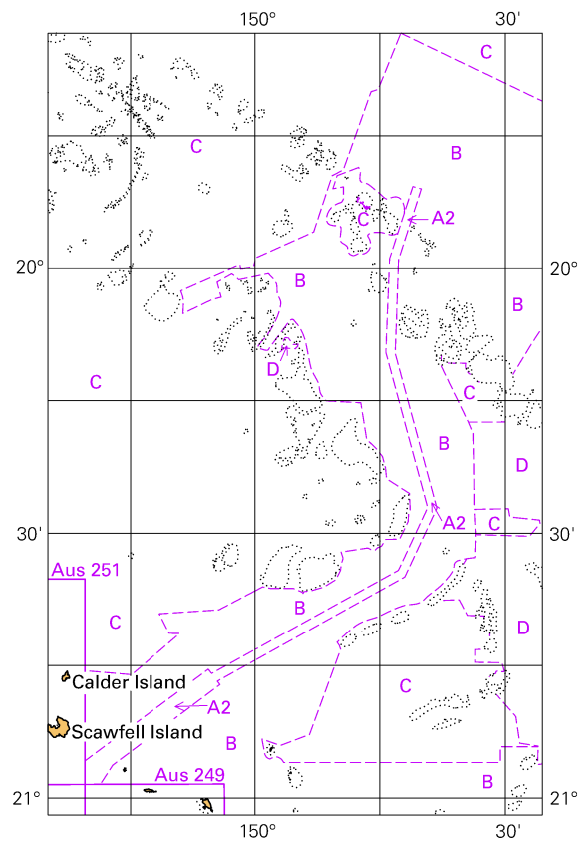
*To accompany Australian Notice to Mariners 114/2019*

**HISTORIC WRECK**

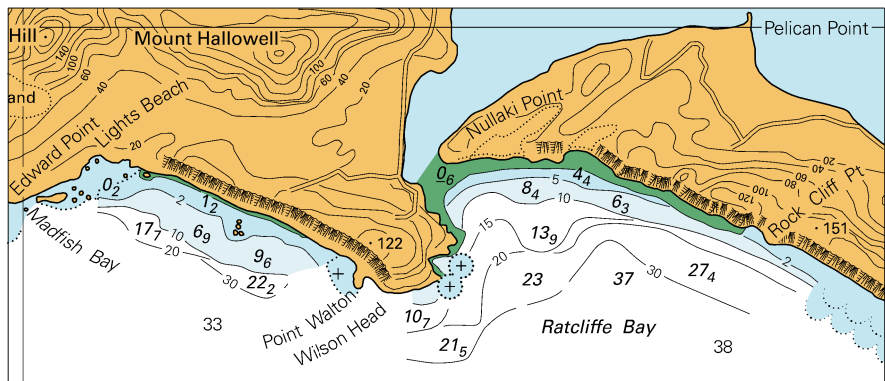
The site of an historic wreck is protected from unauthorised interference. For details see Seafarers Handbook for Australian Waters AHP 20.

*Note for chart Aus 177*

To accompany Australian Notice to Mariners 101/2019



© Commonwealth of Australia 2019  
Block for chart Aus 821 (65.3 x 103.3mm)

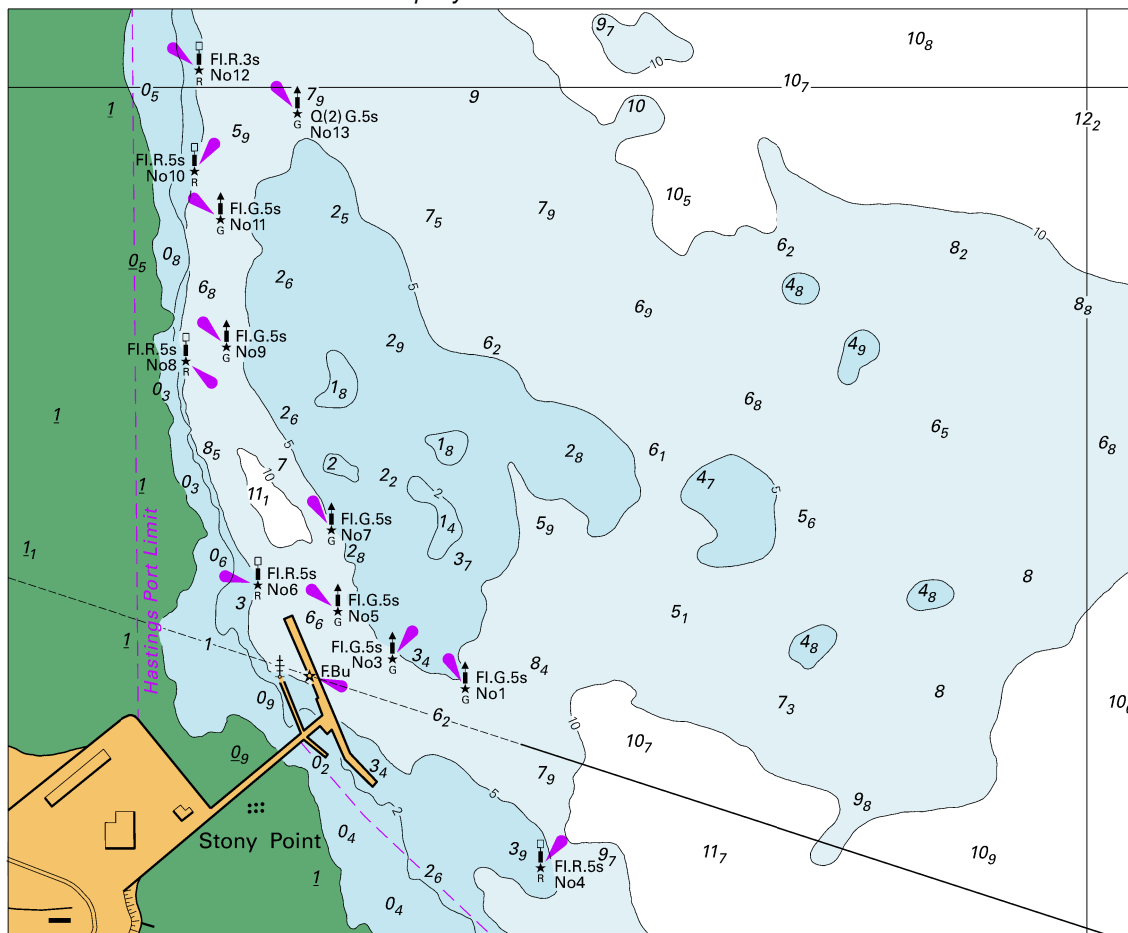


Block for chart Aus 759

© Commonwealth of Australia 2019

(115.9 x 49.4mm)

To accompany Australian Notice to Mariners 113/2019

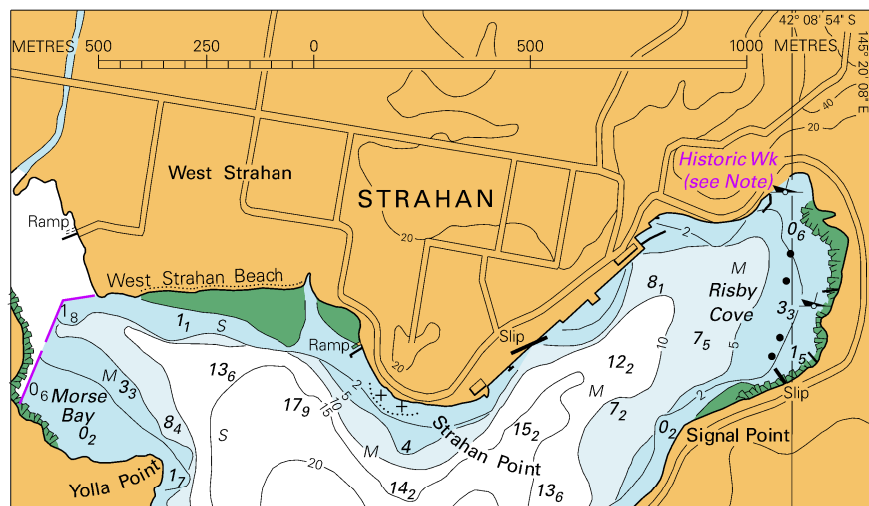


Block for chart Aus 152

© Commonwealth of Australia 2019

(150.1 x 122.6mm)

To accompany Australian Notice to Mariners 114/2019

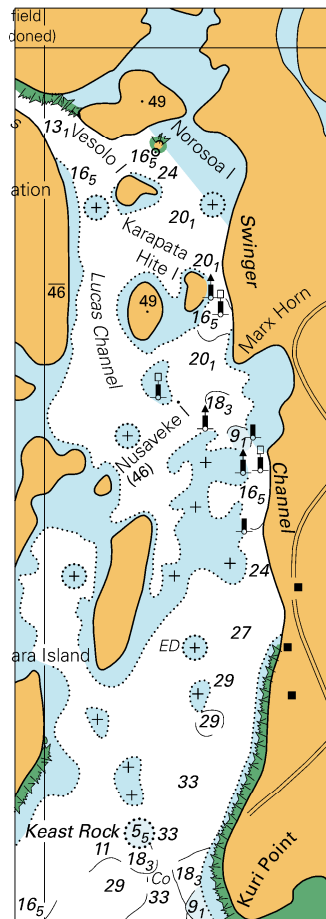


Block for chart Aus 177

© Commonwealth of Australia 2019

(113.8 x 65.7mm)

To accompany Australian Notice to Mariners 115/2019



© Commonwealth of Australia 2019  
 Block for Chart SLB 102 (42.1 x 120.9mm)