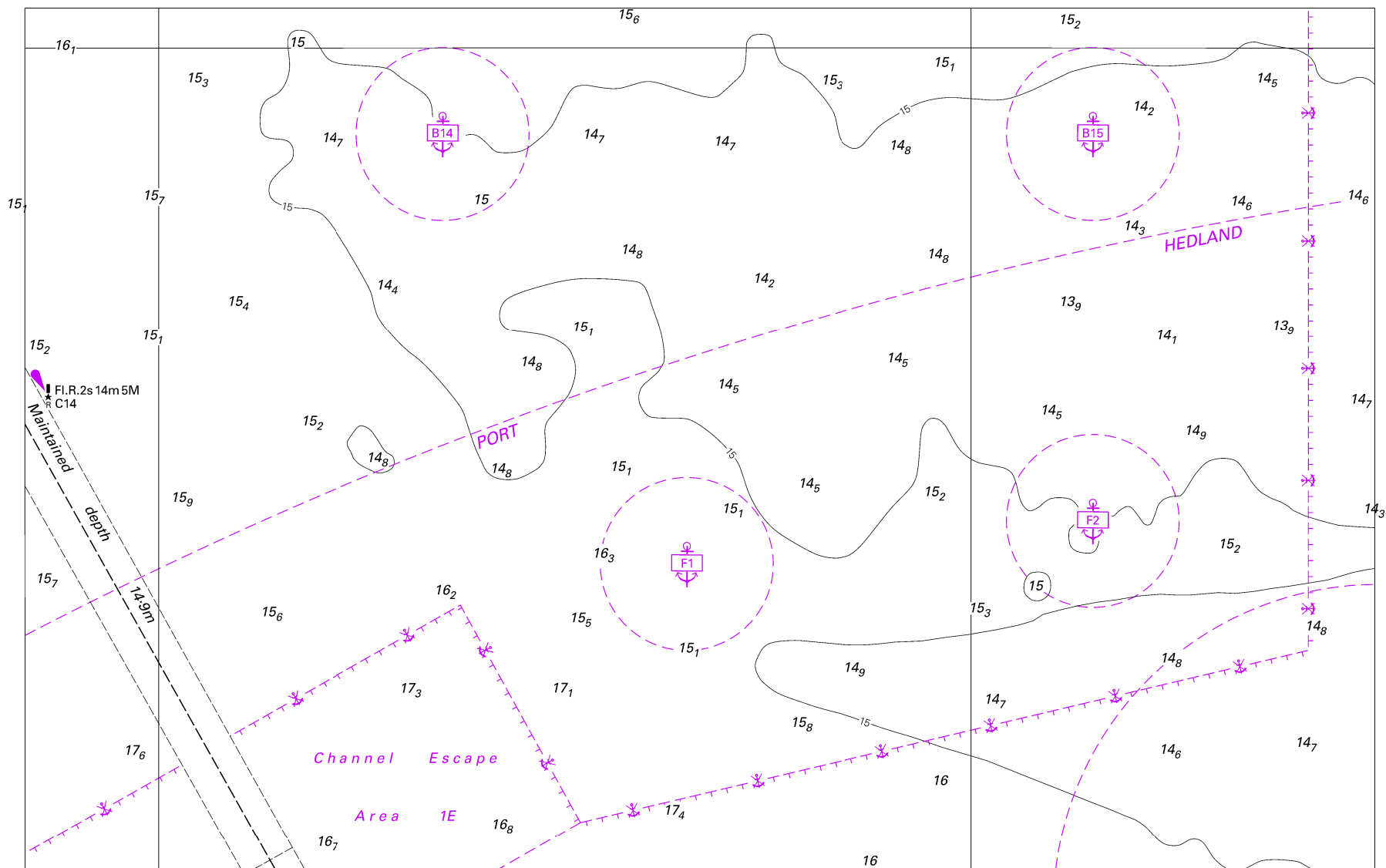


To accompany Australian Notice to Mariners 208/2019

Tidal Streams referred to HW at LEGGATT ISLAND						
Hours		Geographical Position		A 14°29.5 S 144°56.7 E		
14°45.00'E  14°34.80'S	Before High Water	6	Directions of streams (degrees)  Rates at spring tides (knots)  Rates at neap tides (knots)	- 6	303	0.1 0.0
	5			- 5	258	0.2 0.0
	4			- 4	252	0.3 0.0
	3			- 3	271	0.3 0.0
	2			- 2	317	0.3 0.0
	1			- 1	300	0.4 0.0
	High Water			0	090	0.1 0.0
	After High Water	1		+1	113	0.3 0.0
	2			+2	127	0.4 0.0
	3			+3	110	0.3 0.0
	4			+4	070	0.1 0.0
	5			+5	040	0.1 0.0
	6			+6	258	0.1 0.0

© Commonwealth of Australia 2019  
Block for chart Aus 270 (60.9 x 55.3mm)

To accompany Australian Notice to Mariners 219/2019

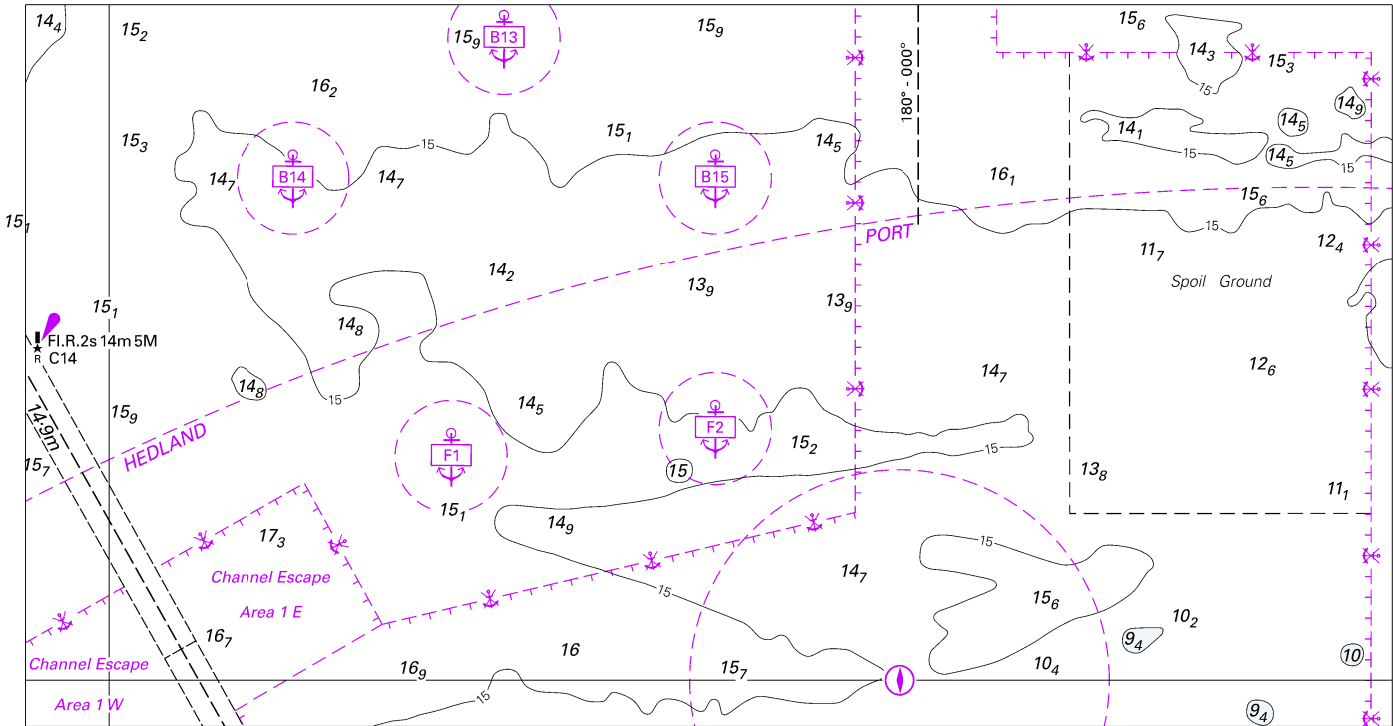


Block for chart Aus 52

© Commonwealth of Australia 2019

(231.6 x 147.8mm)

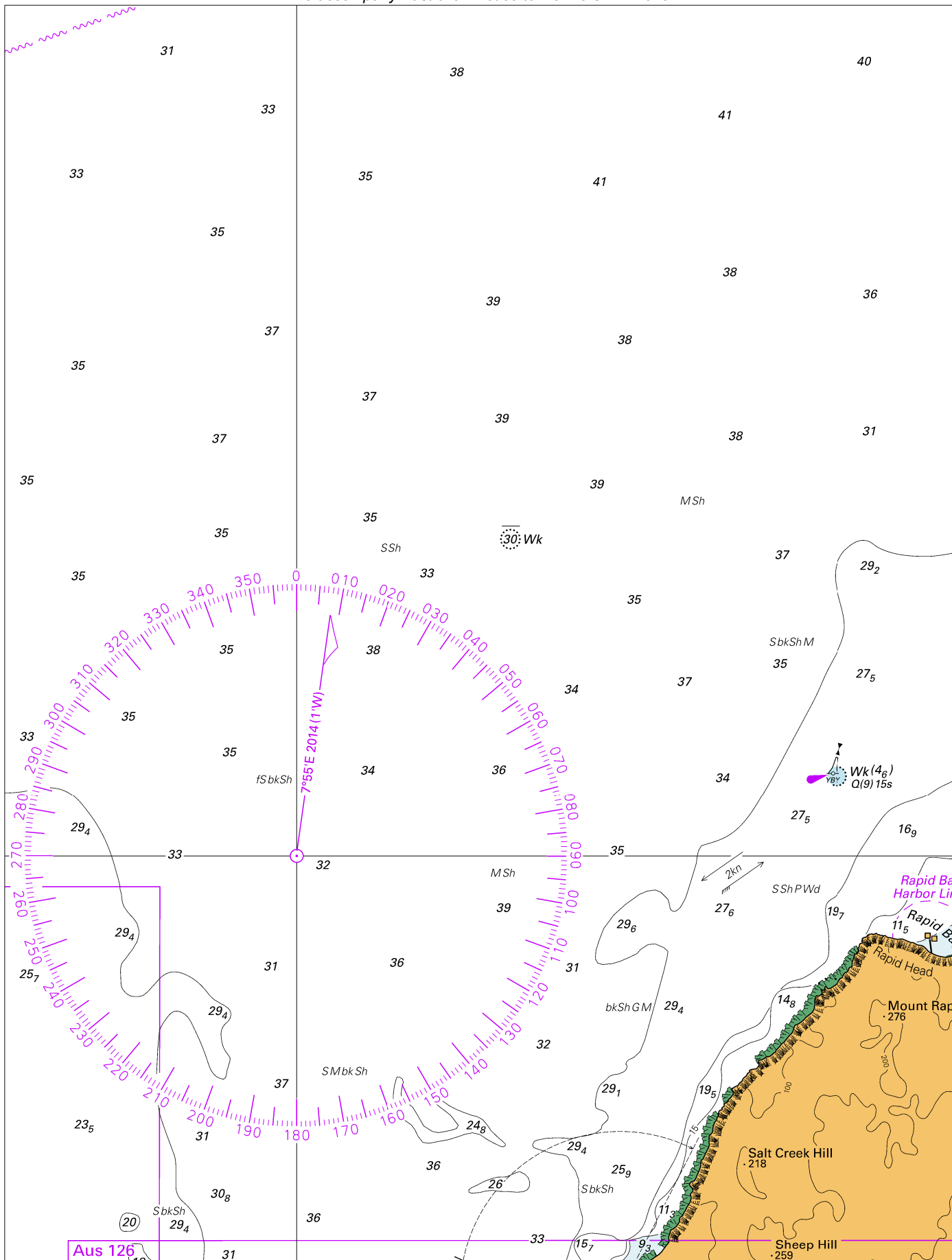
*To accompany Australian Notice to Mariners 219/2019*



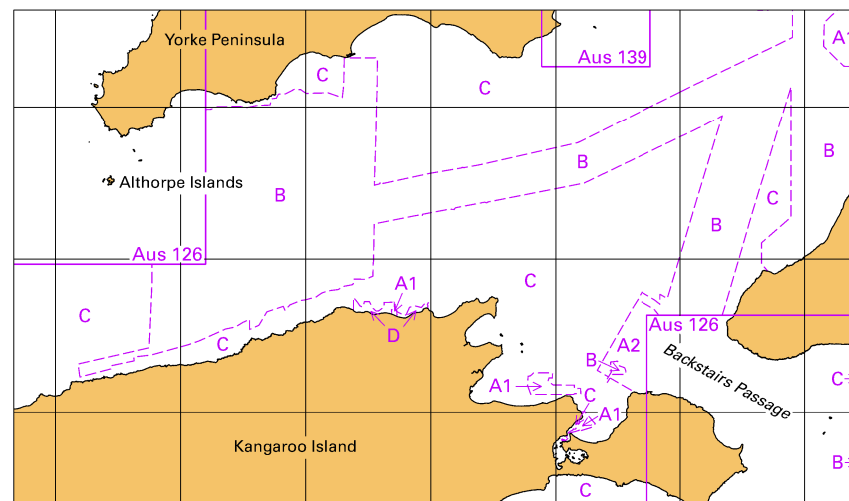
*Block for chart Aus 53*

© Commonwealth of Australia 2019

(180.7 x 95.4mm)



*To accompany Australian Notice to Mariners 221/2019*



© Commonwealth of Australia 2019

*Block B for Chart Aus 780*

(111.8 x 65.4mm)