

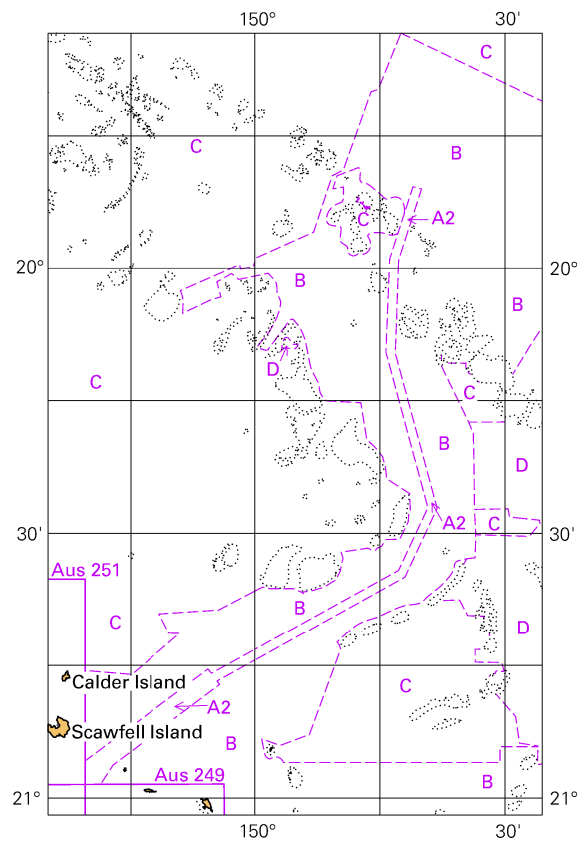
To accompany Australian Notice to Mariners 114/2019

HISTORIC WRECK

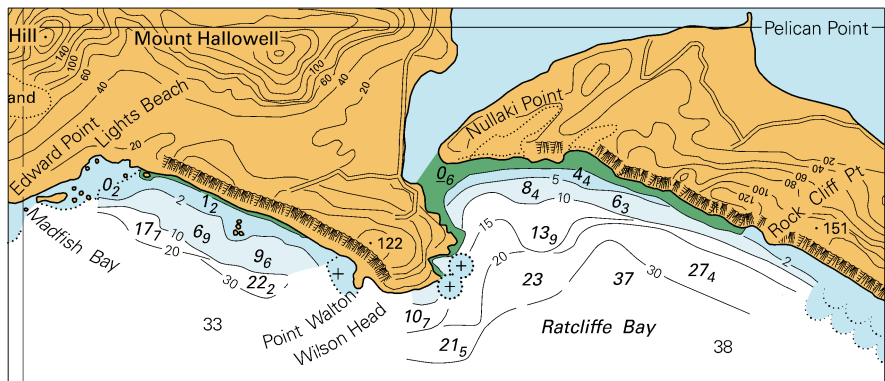
The site of an historic wreck is protected from unauthorised interference. For details see Seafarers Handbook for Australian Waters AHP 20.

Note for chart Aus 177

To accompany Australian Notice to Mariners 101/2019



© Commonwealth of Australia 2019
Block for chart Aus 821 (65.3 x 103.3mm)

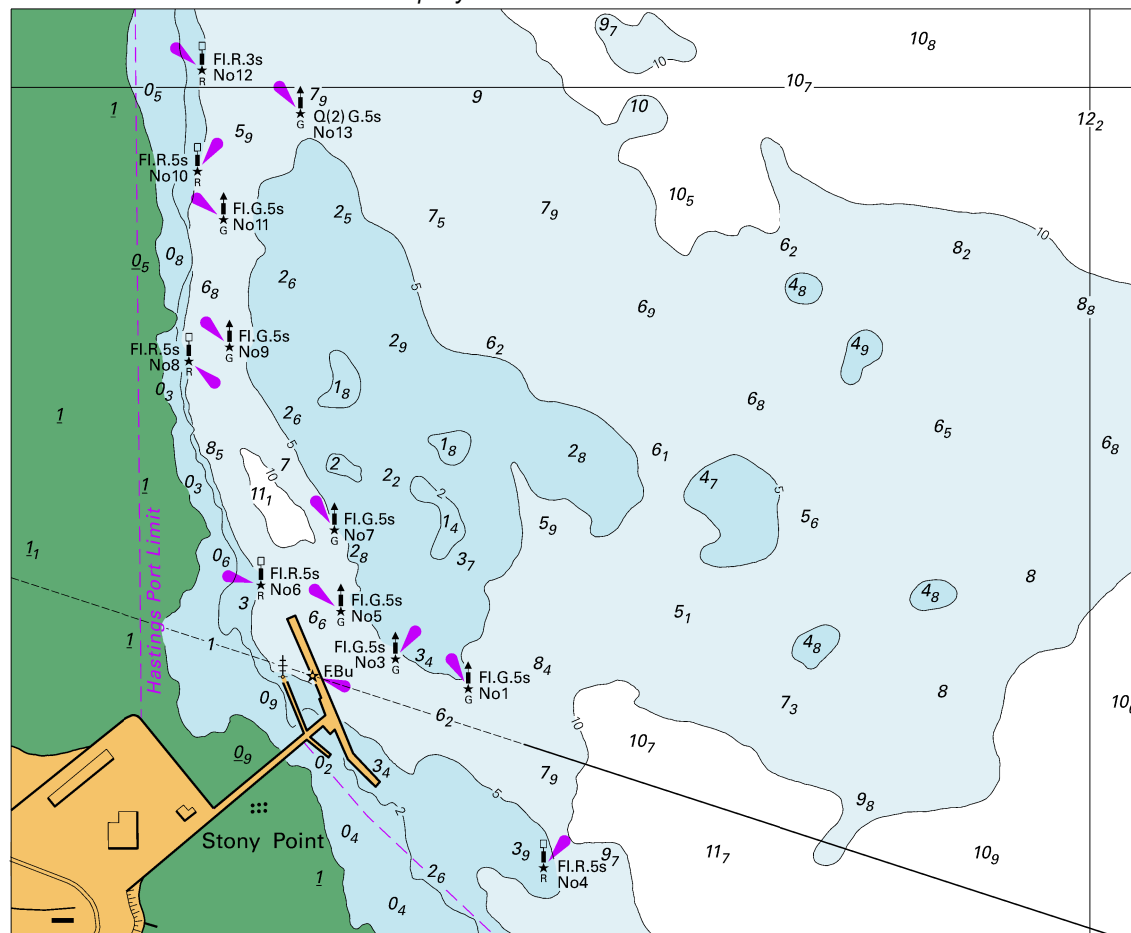


Block for chart Aus 759

© Commonwealth of Australia 2019

(115.9 x 49.4mm)

To accompany Australian Notice to Mariners 113/2019

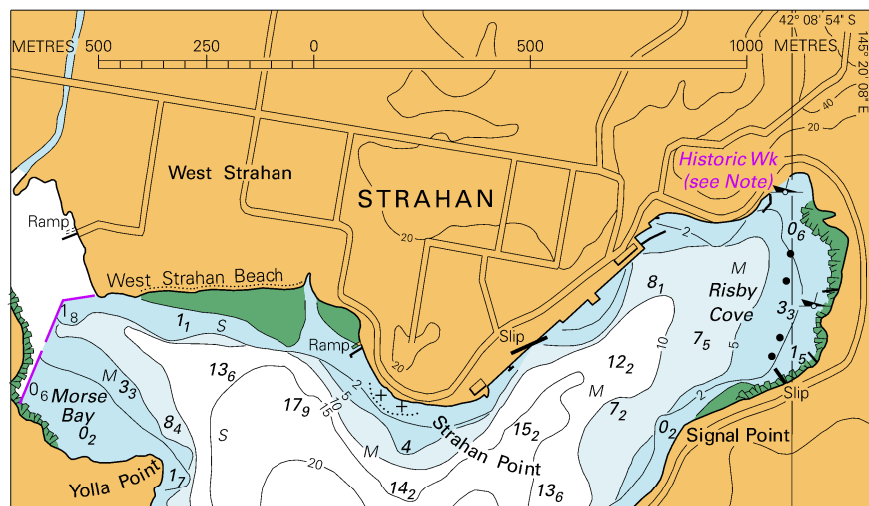


Block for chart Aus 152

© Commonwealth of Australia 2019

(150.1 x 122.6mm)

To accompany Australian Notice to Mariners 114/2019

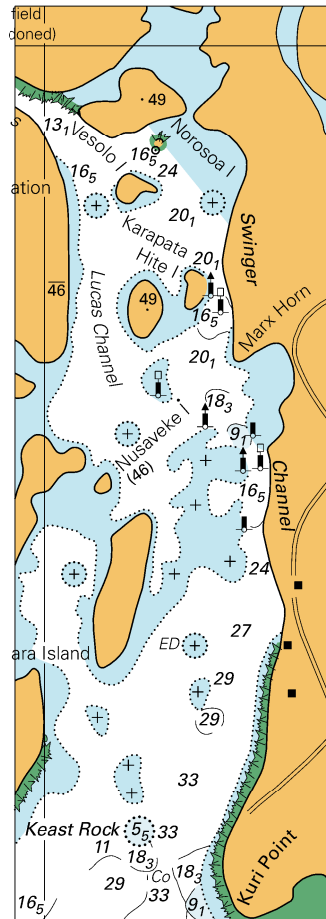


Block for chart Aus 177

© Commonwealth of Australia 2019

(113.8 x 65.7mm)

To accompany Australian Notice to Mariners 115/2019



© Commonwealth of Australia 2019
 Block for Chart SLB 102 (42.1 x 120.9mm)