

To accompany Australian Notice to Mariners 1081/2019

ELECTRONIC NAVIGATIONAL CHART (ENC)

Larger scale ENC content exists in this area. When using electronic navigation systems, certain vessels (e.g. restricted by depth or size) may benefit from the additional level of detail shown in the largest scale ENC product available.

Note for chart Aus 817

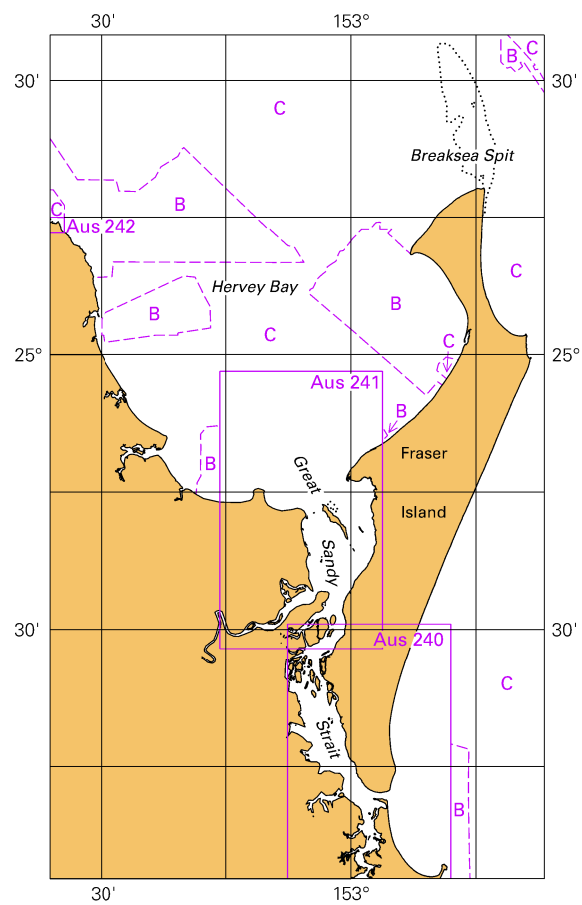
To accompany Australian Notice to Mariners 1081/2019

ELECTRONIC NAVIGATIONAL CHART (ENC)

Larger scale ENC content exists in this area. When using electronic navigation systems, certain vessels (e.g. restricted by depth or size) may benefit from the additional level of detail shown in the largest scale ENC product available.

Note for chart Aus 818

To accompany Australian Notice to Mariners 1081/2019

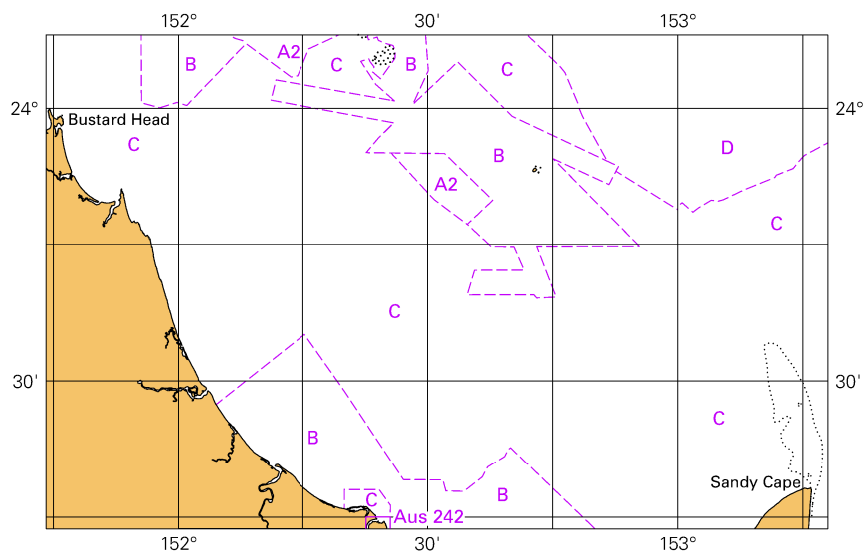


© Commonwealth of Australia 2019

Block for chart Aus 817

(111.5 x 65.4mm)

To accompany Australian Notice to Mariners 1081/2019

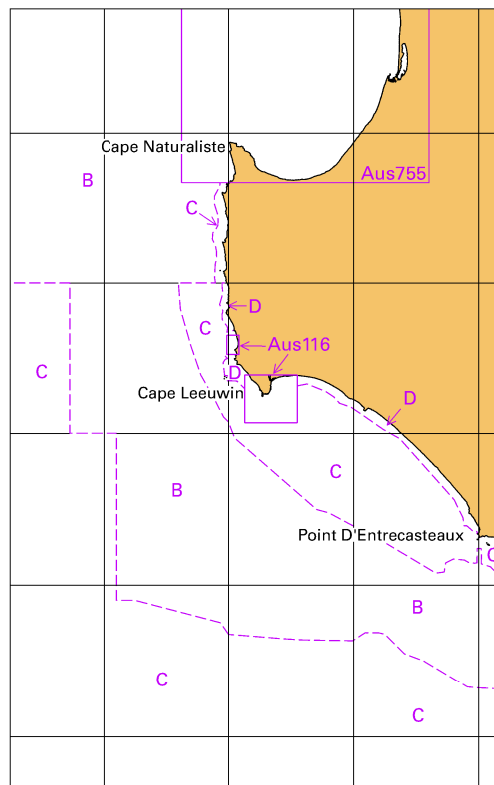


© Commonwealth of Australia 2019

Block for chart Aus 818

(103.3mm x 65.3mm)

To accompany Australian Notice to Mariners 1089/2019

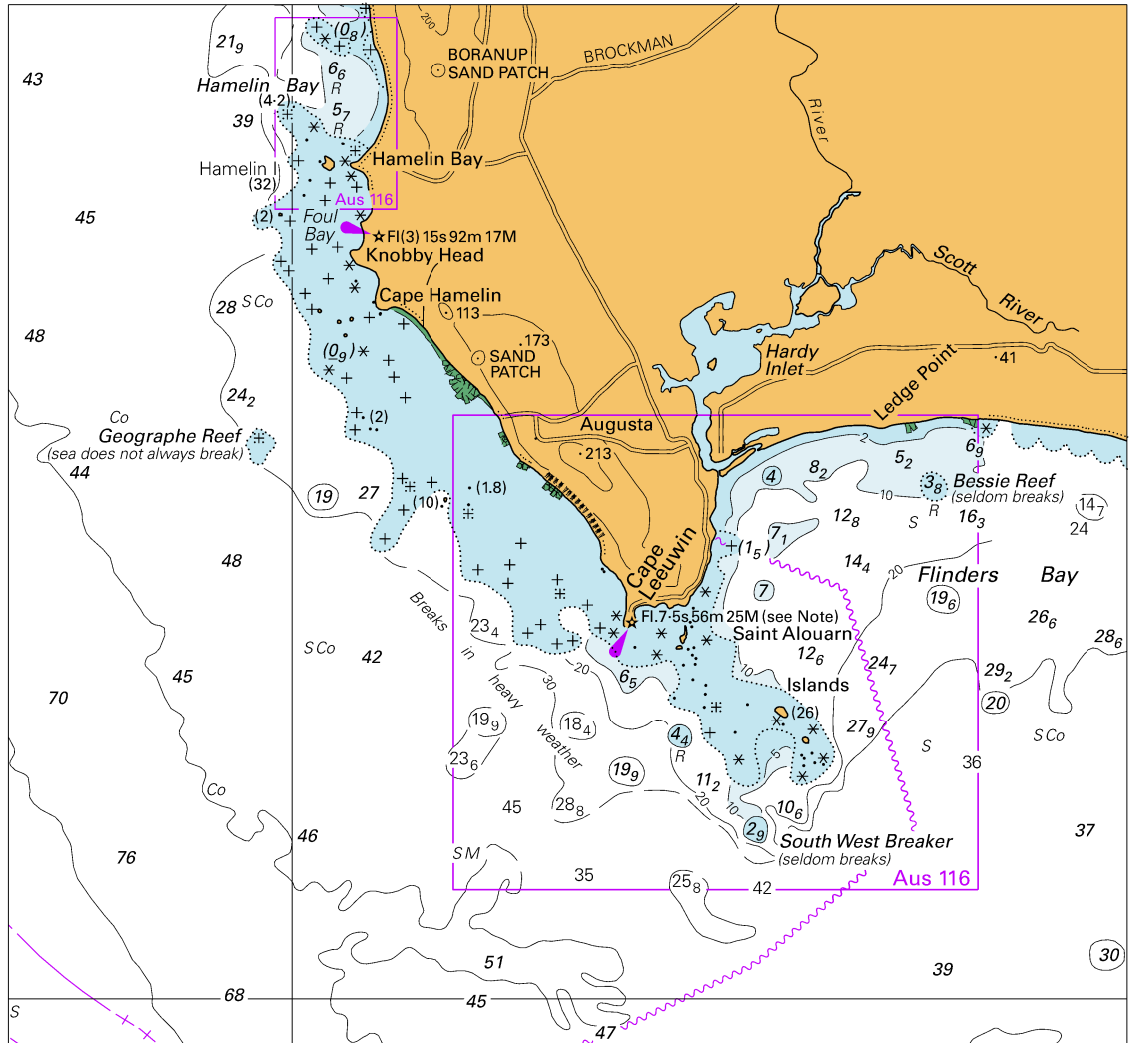


© Commonwealth of Australia 2019

Block for chart Aus 335

(65.3 x 103.3mm)

To accompany Australian Notice to Mariners 1089/2019

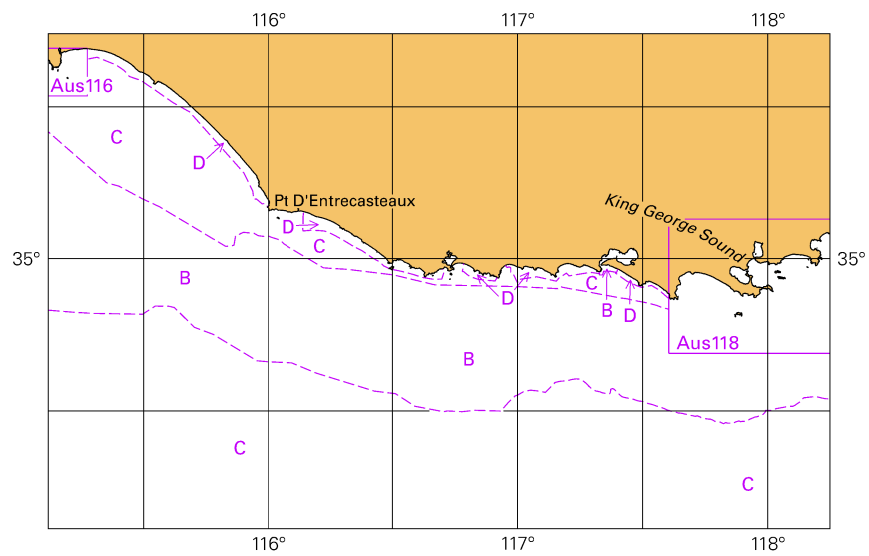


Block for chart Aus 335

© Commonwealth of Australia 2019

(148.0 x 137.5mm)

To accompany Australian Notice to Mariners 1089/2019

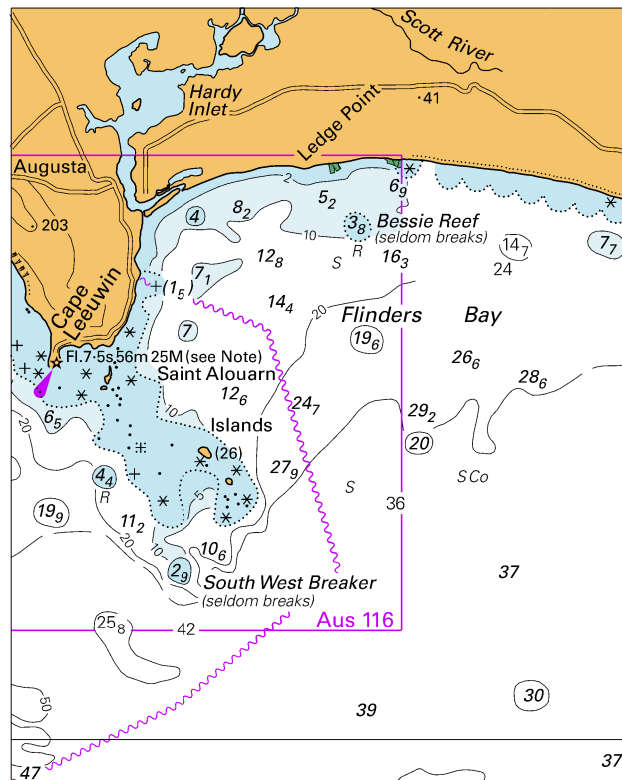


© Commonwealth of Australia 2019

Block for chart Aus 336

(103.3 x 65.3mm)

To accompany Australian Notice to Mariners 1089/2019



© Commonwealth of Australia 2019

Block for chart Aus 336

(82.1 x 102.6mm)

To accompany Australian Notice to Mariners 1089/2019

