

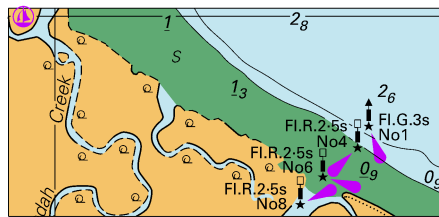
To accompany Australian Notice to Mariners 814/2019

ESTUARY AND RIVER ENTRANCES

The crossing of coastal bars and entry to rivers and estuaries is potentially dangerous. Bars and entrances are dynamic in nature, hence the depth and preferred approach may vary. Leading beacons and other navigational aids may not always indicate the best approach. If mariners are unsure of the condition at a particular bar or entrance, local information should be sought prior to crossing.

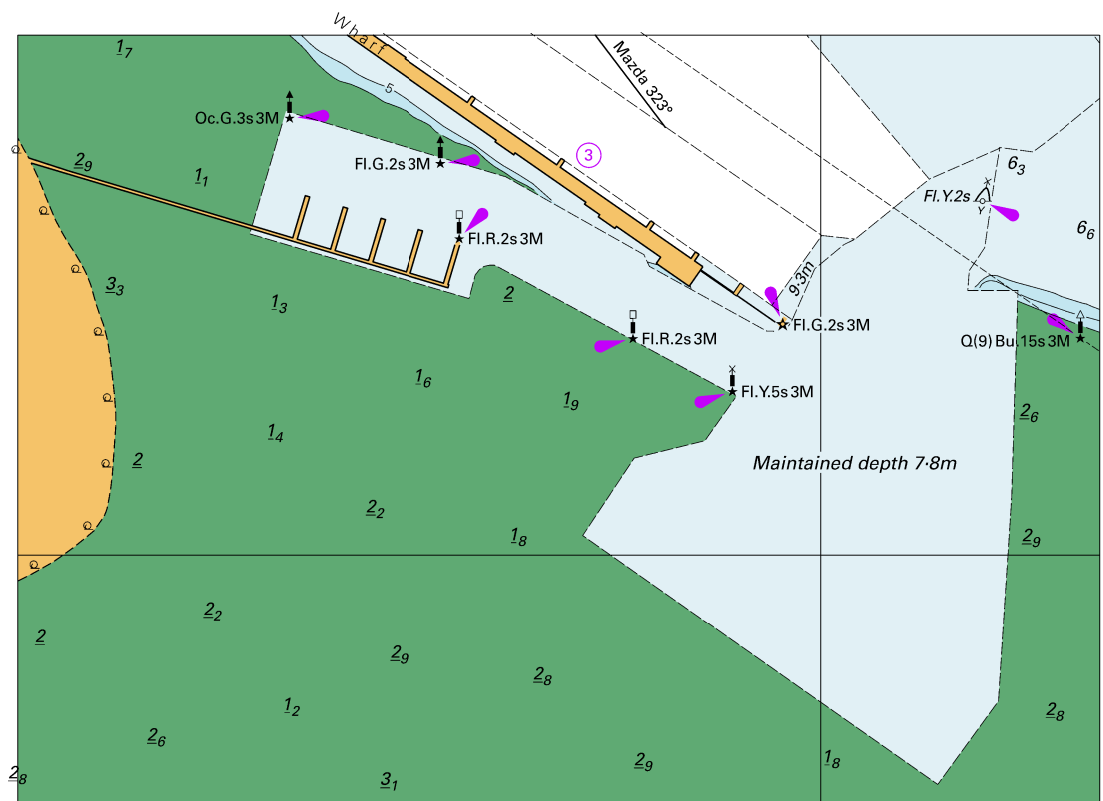
Note for chart Aus 247

To accompany Australian Notice to Mariners 819/2019



© Commonwealth of Australia 2019
 Block for chart Aus 236 (58.1 x 27.5mm)

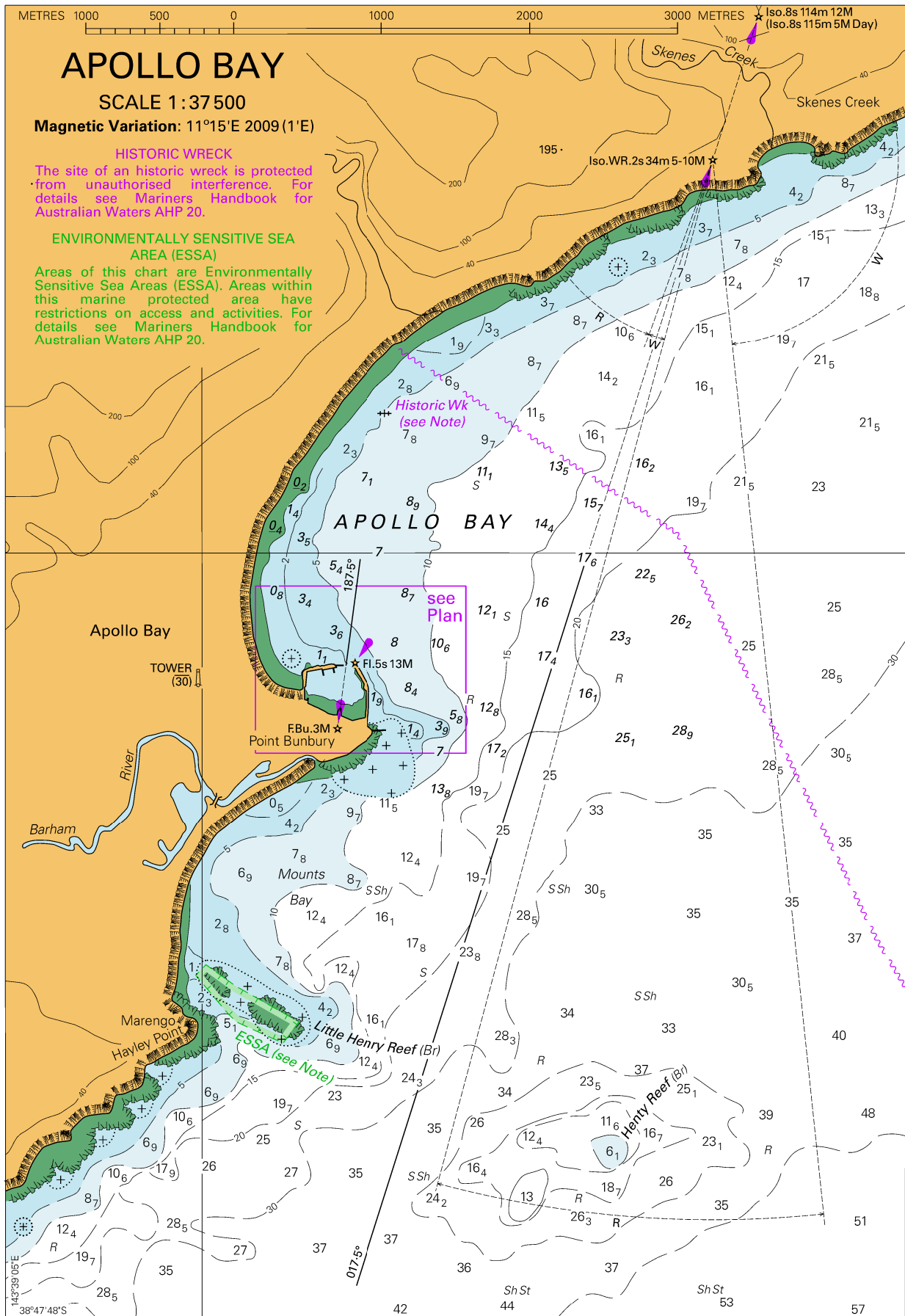
To accompany Australian Notice to Mariners 826/2019



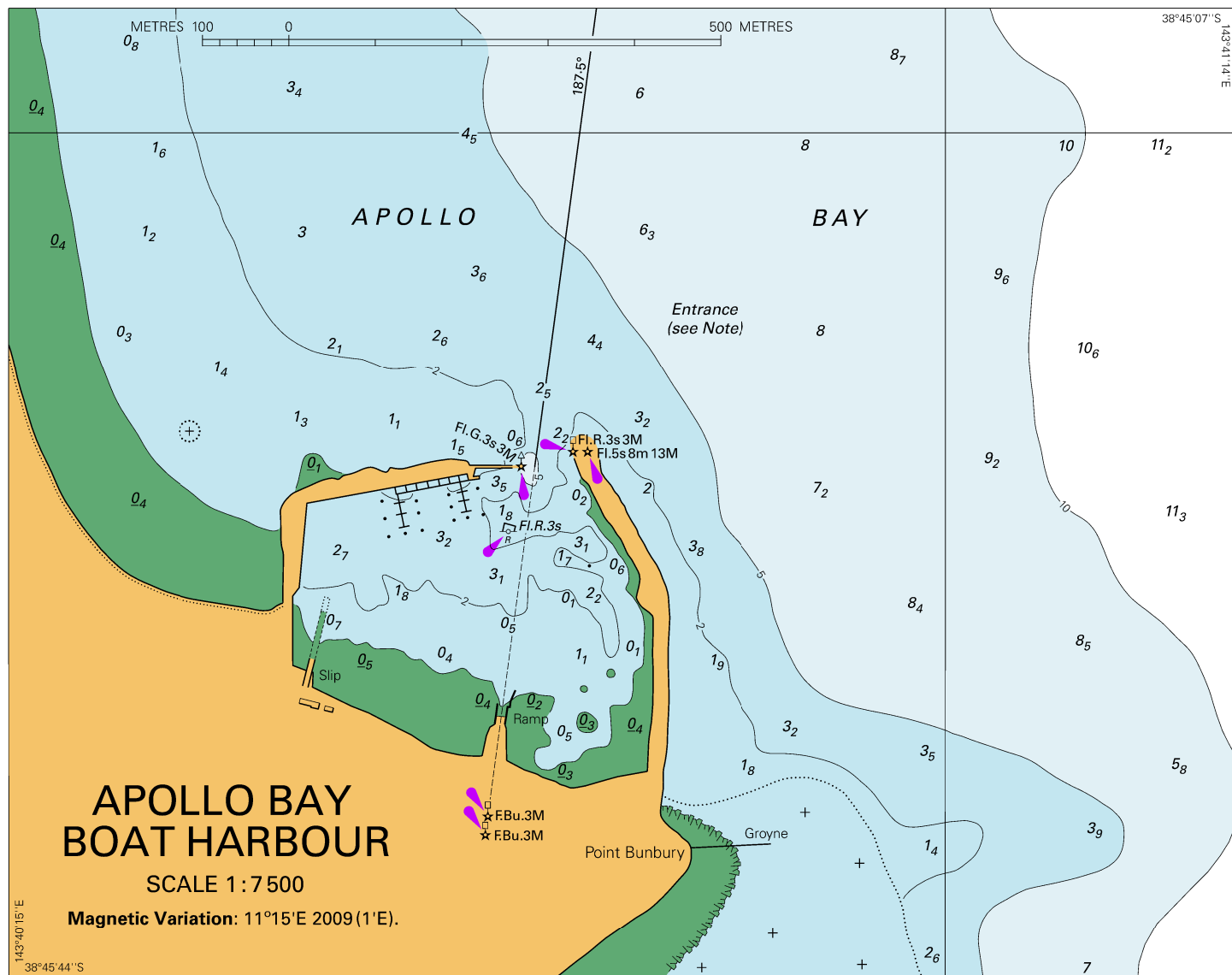
Block for chart Aus 54

© Commonwealth of Australia 2019

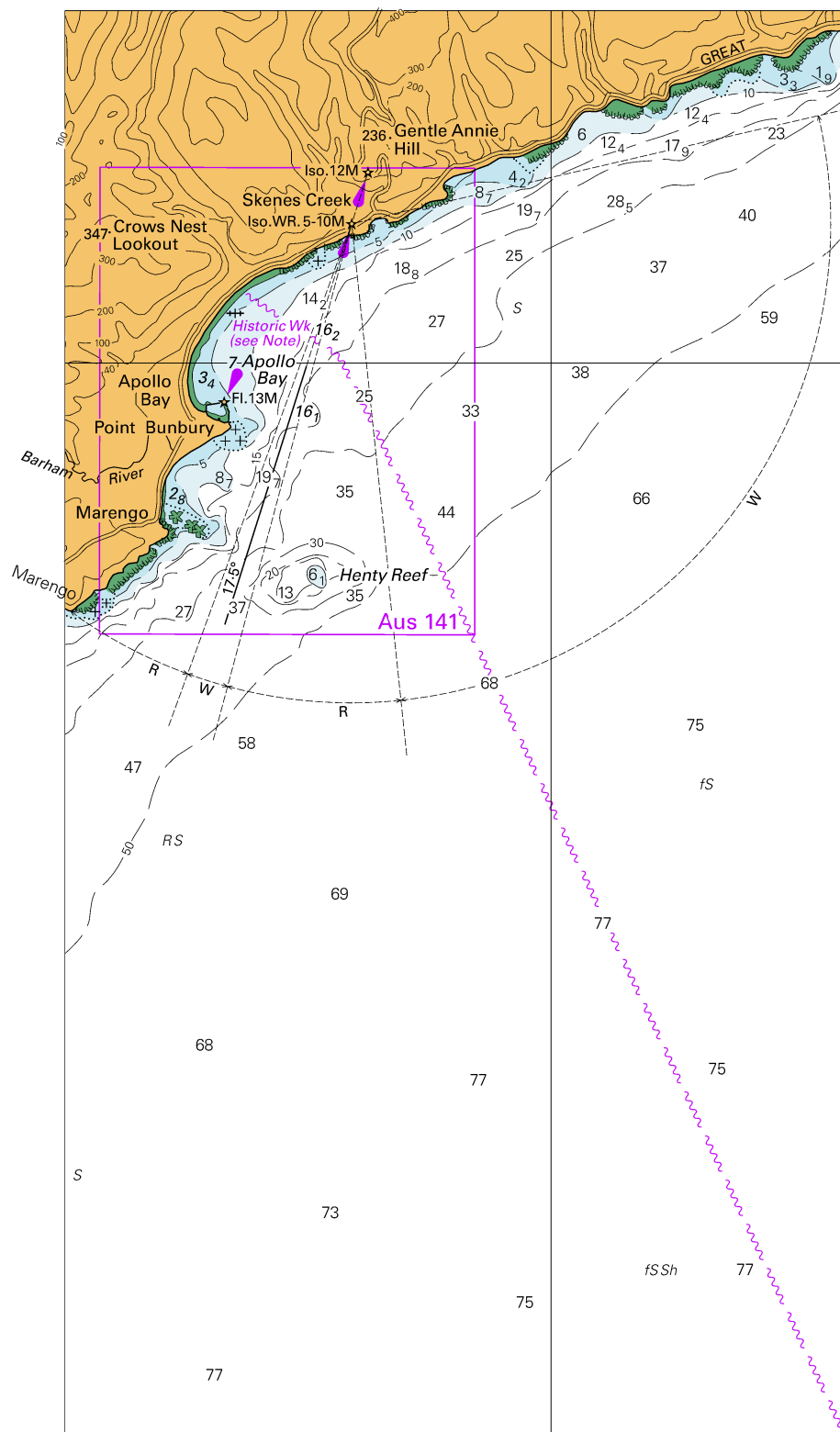
(143.1 x 101.3mm)



To accompany Australian Notice to Mariners 829/2019



To accompany Australian Notice to Mariners 829/2019



Block for chart Aus 788 © Commonwealth of Australia 2019

(112.6
112.4 x 205.4mm)