

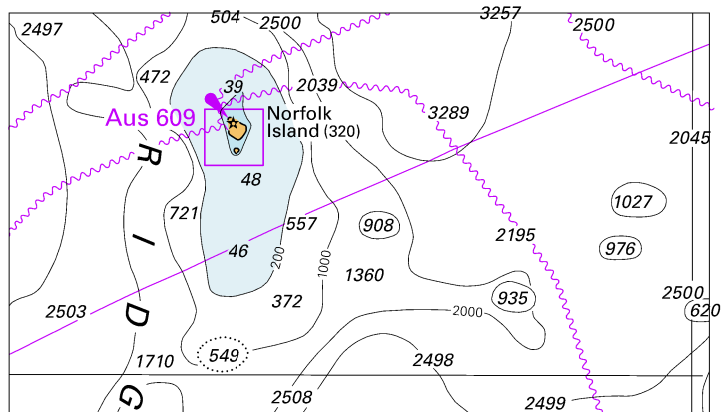
To accompany Australian Notice to Mariners 590/2019

ELECTRONIC NAVIGATIONAL CHART (ENC)

Larger scale ENC content exists in this area. When using electronic navigation systems, certain vessels (e.g. restricted by depth or size) may benefit from the additional level of detail shown in the largest scale ENC product available.

Note for chart Aus 53

To accompany Australian Notice to Mariners 576/2019

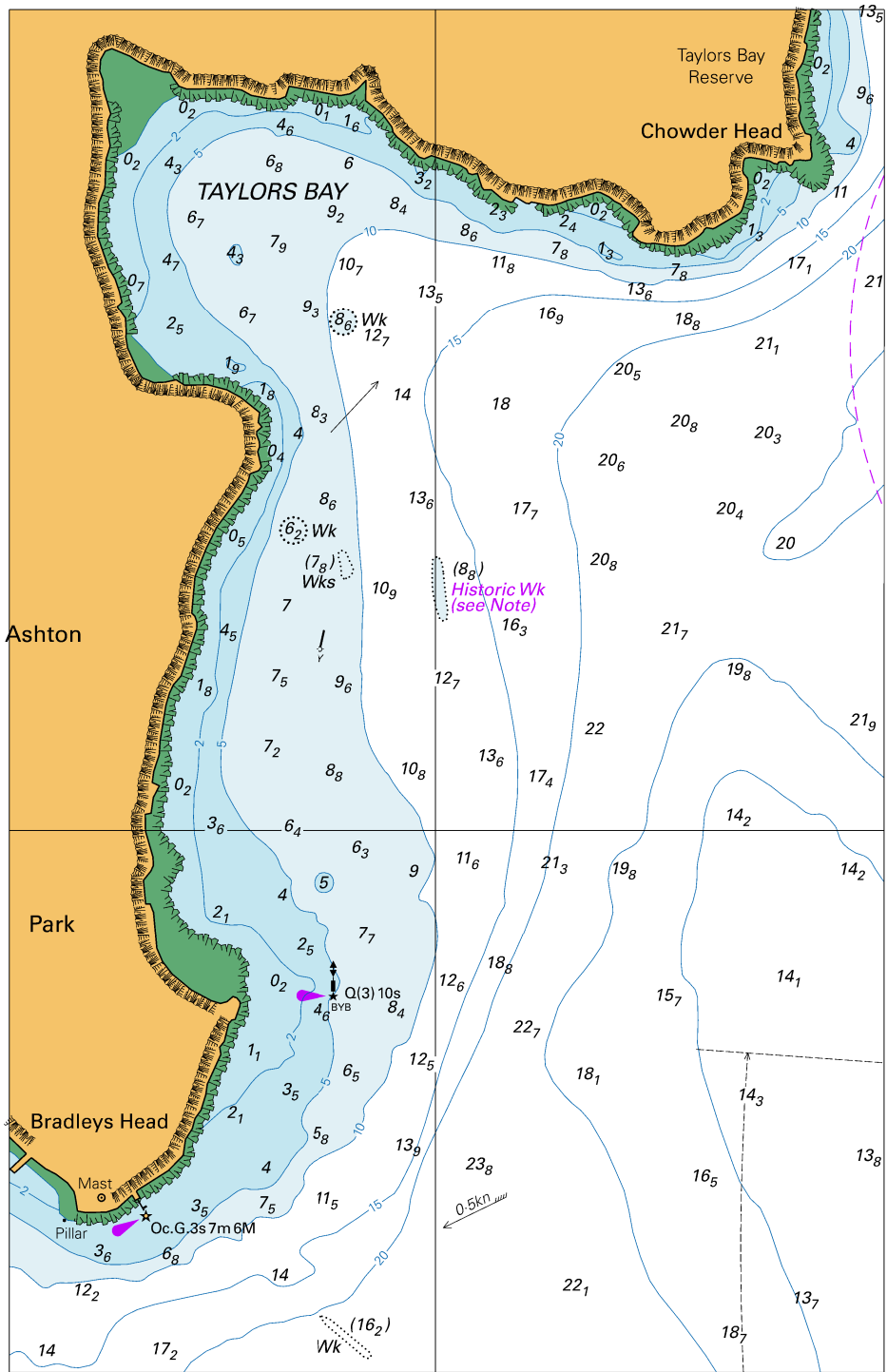


© Commonwealth of Australia 2019

Block for chart Aus 4602

(92.6 x 52.9mm)

To accompany Australian Notice to Mariners 577/2019

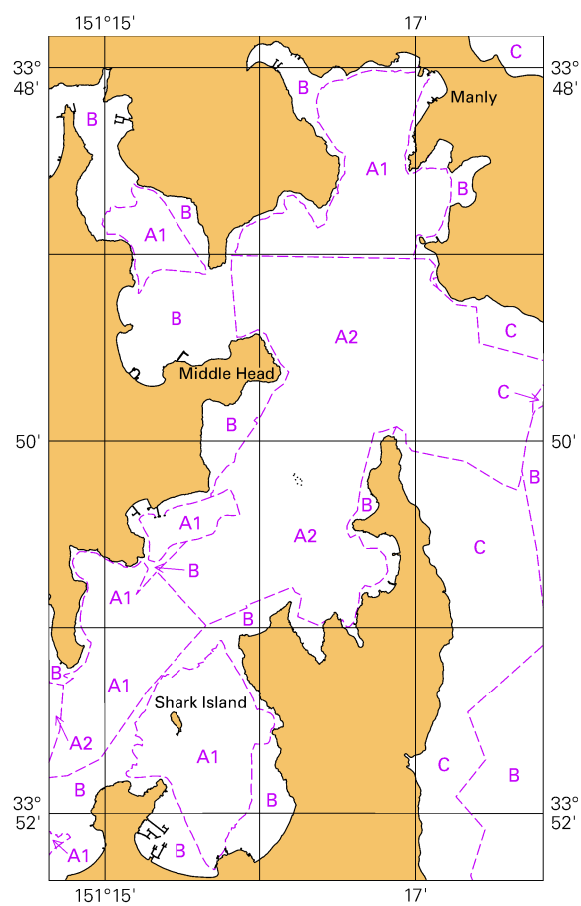


Block A for chart Aus 201

© Commonwealth of Australia 2019

(121.7 x 189.6mm)

To accompany Australian Notice to Mariners 577/2019



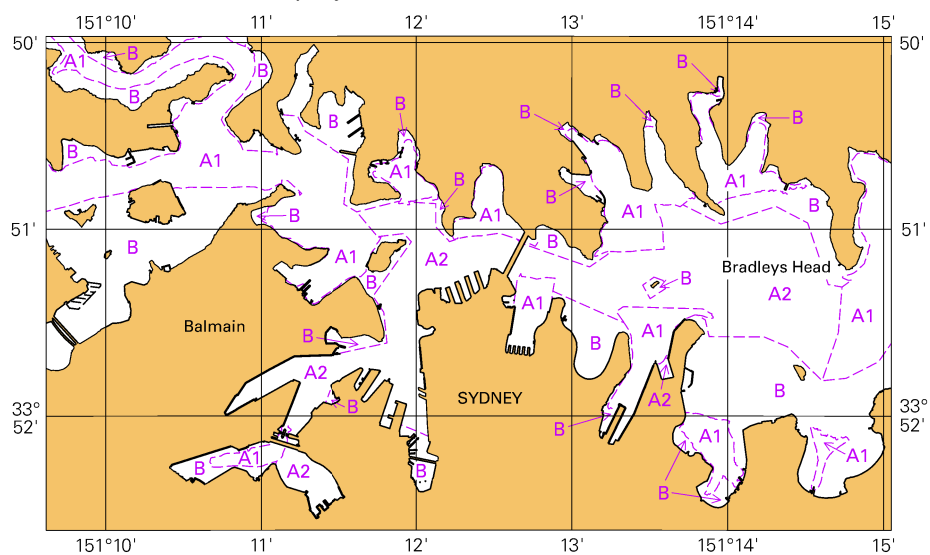
© Commonwealth of Australia 2019

Block B for chart Aus 201

(65.4 x 111.7mm)

© Commonwealth of Australia 2019
Block A for chart Aus 202 (69.7 x 189.6mm)

To accompany Australian Notice to Mariners 577/2019

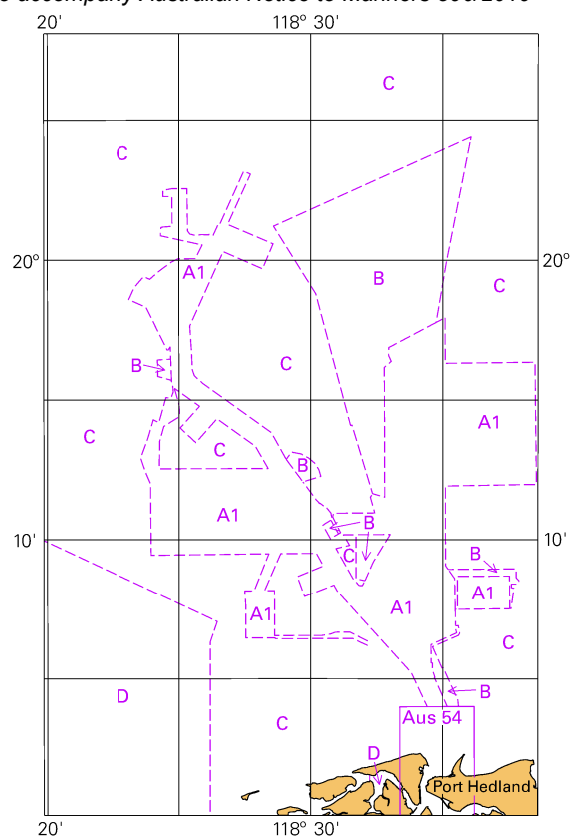


© Commonwealth of Australia 2019

Block B for chart Aus 202

(111.7 x 65.3mm)

To accompany Australian Notice to Mariners 590/2019

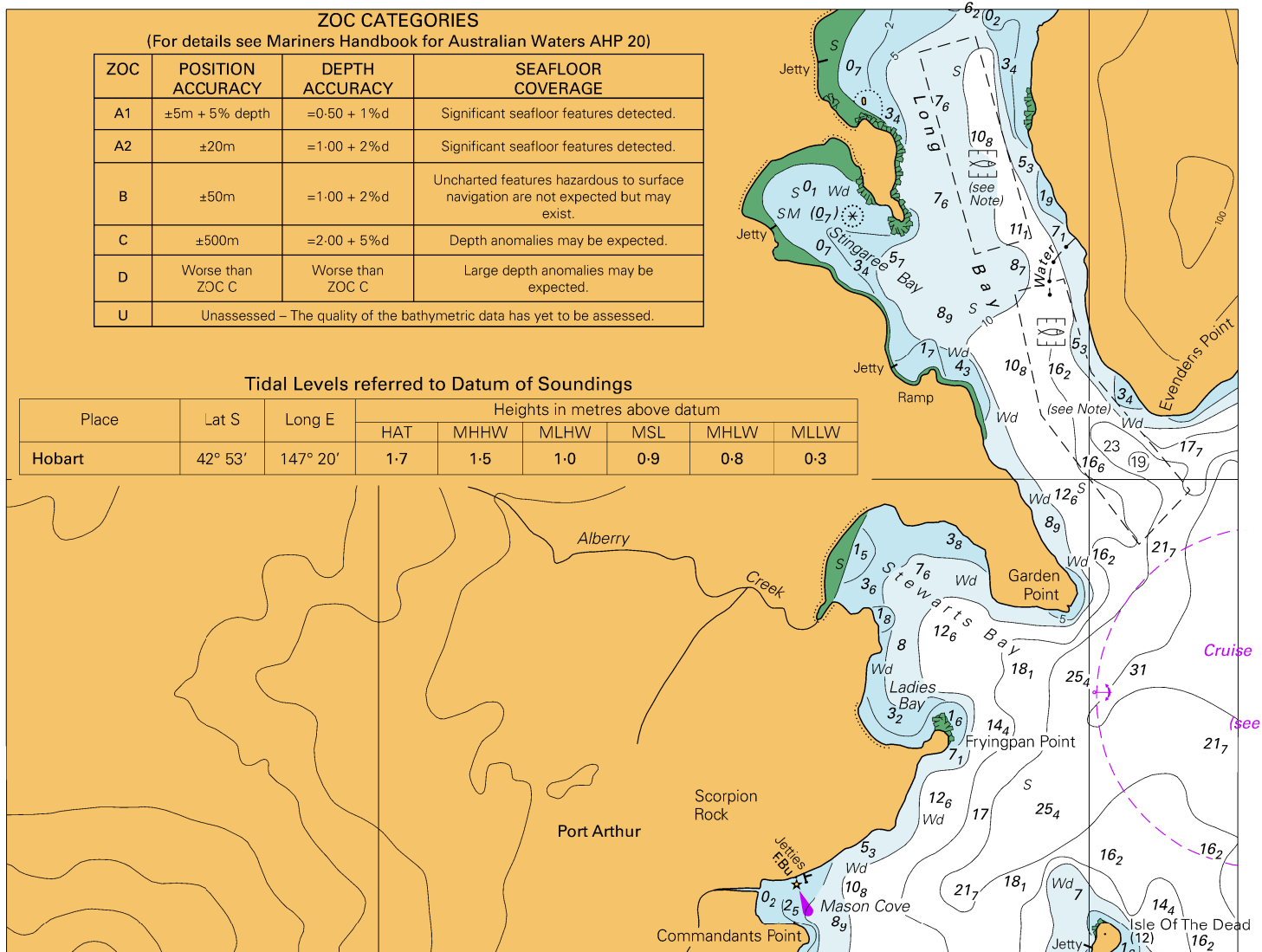


© Commonwealth of Australia 2019

Block for chart Aus 53

(65.4
65.2 x 103.3mm)

To accompany Australian Notice to Mariners 592/2019



Block for chart Aus 174

© Commonwealth of Australia 2019

(188.1 x 144.2mm)