



5 May 2017

Edition 9

Australian Notices to Mariners are the authority for correcting Australian Charts and Publications

AUSTRALIAN NOTICES TO MARINERS

Notices 315 - 355



Published fortnightly by the Australian Hydrographic Service

Commodore B.K. BRACE RAN
Hydrographer of Australia

SECTIONS.

- I. **Australian Notices to Mariners, including blocks and notes.**
- II. **Hydrographic Reports.**
- III. **Navigational Warnings.**

SUPPLEMENTS.

- I. **Tracings**
- II. **Cumulative List of Australian Notices to Mariners.**
- III. **Cumulative List of Temporary and Preliminary Australian Notices to Mariners.**
- IV. **Temporary and Preliminary Notices in force.**
- V. **Amendments to Admiralty List of Lights and Fog Signals (Vol K), Radio Signals (NP 281(2), 282, 283(2), 285, 286(4)) and Sailing Directions (NP 9, 13, 14, 15, 33, 34, 35, 36, 39, 44, 51, 60, 61, 62, 100, 136).**

© Commonwealth of Australia 2017

This work is copyright. Apart from any use permitted under the Copyright Act 1968, no part may be reproduced by any process, adapted, communicated or commercially exploited without prior written permission from The Commonwealth represented by the Australian Hydrographic Service.

IMPORTANT NOTICE

This edition of Notices to Mariners includes all significant information affecting AHS products which the AHS has become aware of since the last edition. All reasonable efforts have been made to ensure the accuracy and completeness of the information, including third party information, on which these updates are based. The AHS regards third parties from which it receives information as reliable, however the AHS cannot verify all such information and errors may therefore exist. The AHS does not accept liability for errors in third party information.

GENERAL INSTRUCTIONS

The substance of these notices should be inserted on the charts affected.

Bearings are referred to the true compass and are reckoned clockwise from North; those relating to lights are given as seen by an observer from seaward.

Positions quoted in notices relate to WGS84 which is the horizontal datum for all charts produced by the Australian Hydrographic Service.

The range quoted for a light is its nominal range.

Depths are with reference to the chart datum of each chart. Heights are above mean high water springs or mean higher high water, as appropriate.

The capital letter (P) or (T) after the number of any notice denotes a preliminary or temporary notice respectively, which are contained separately at the end of the permanent notices.

A star (*) adjacent to the number of a notice indicates that the notice is based on original information.

REPORTING OF DANGERS

Mariners are particularly requested to notify the AUSTRALIAN HYDROGRAPHIC SERVICE, Locked Bag 8801 Wollongong, NSW 2500 (Fax 02-4223 6599, e-mail datacentre@hydro.gov.au or, alternatively by filling in and submitting the [Hydrographic Notes](#) forms located on the web site – www.hydro.gov.au), immediately on the discovery of new dangers or suspected dangers to navigation. For changes or defects in aids to navigation notify AusSAR (Fax 02-6230 6868 or email rccaus@amsa.gov.au).

AUTHORISED USE

Copies of Australian notices are available free of charge from the Australian Hydrographic Service (AHS) website (www.hydro.gov.au) and through the eNotices (email) service (www.hydro.gov.au/enotices/enotices.htm).

Individual Notices may be copied for the purpose of inserting Notice substance on official charts and publications. Paper copies may be printed by chart agents and distributed to customers on a cost recovery basis. Participating chart agents are listed on the AHS website as providing a 'Paper Notices to Mariners' service (www.hydro.gov.au/webapps/jsp/agents/agents-list.jsp). Copies of the notices may not be sold for profit without prior written agreement.

NUMERICAL INDEX OF NOTICES TO MARINERS

Edition No 9

Notices	Aus Chart, INT Chart, ENC Cell, AHP, BA Pubs
315	Aus 259, 267
316	Aus 293, 299
317	Aus 818
318	Aus 647, 648
319	Aus 539
320	Aus 115
321	Aus 59
322	Aus 113
323	Aus 4070, 4071, 4708, 4714, 4725, INT 70, 71, 708, 714, 725
324	Aus 4060, 4074, 4601, 4644, 4709, INT 60, 74, 601, 644, 709
325(T)	Aus 200, 202
326(T)	Aus 268
327(T)	Aus 249
328(T)	Aus 236
329(T)	Aus 256, 827
330(T)	Aus 367, 822
331(T)	Aus 260, 261, 367, 822
332(T)	Aus 253, 269
333(T)	Aus 252, 253, 824
334(T)	Aus 256, 827
335(T)	Aus 621, 622
336(T)	Aus 319, 320, 322, 4721, 4722, INT 721, 722
337(T)	Aus 115
338(T)	Aus 753, 4725, INT 725
339(T)	Aus 326, 740
340(T)	Aus 112, 113
341(T)	Aus 754
342(T)	Aus 64, 69
343(T)	Aus 64, 69, 328, 743, 744
344(T)	Aus 52, 53, 54
345(T)	Aus 52, 53
346(T)	Aus 116
347(T)	Aus 112, 117
348(T)	Aus 32
349(T)	Aus 148, 357, 487, 802, 4644, INT 644
350(T)	Aus 4727, INT 727
351(T)	Aus 487, 801
352(T)	Aus 141, 349, 787
353(T)	Aus 154
354(T)	Aus 150, 151
355(T)	Aus 150, 151

NUMERICAL INDEX OF CHARTS AFFECTED

Edition No 9

Aus Chart	Notices
Aus 32	348(T)
Aus 52	344(T), 345(T)
Aus 53	344(T), 345(T)
Aus 54	344(T)
Aus 59	321
Aus 64	342(T), 343(T)
Aus 69	342(T), 343(T)
Aus 112	340(T), 347(T)
Aus 113	322, 340(T)
Aus 115	320, 337(T)
Aus 116	346(T)
Aus 117	347(T)
Aus 141	352(T)
Aus 148	349(T)
Aus 150	354(T), 355(T)
Aus 151	354(T), 355(T)
Aus 154	353(T)
Aus 200	325(T)
Aus 202	325(T)
Aus 236	328(T)
Aus 249	327(T)
Aus 252	333(T)
Aus 253	332(T), 333(T)
Aus 256	329(T), 334(T)
Aus 259	315
Aus 260	331(T)
Aus 261	331(T)
Aus 267	315
Aus 268	326(T)
Aus 269	332(T)
Aus 293	316
Aus 299	316
Aus 319	336(T)
Aus 320	336(T)
Aus 322	336(T)
Aus 326	339(T)
Aus 328	343(T)
Aus 349	352(T)
Aus 357	349(T)
Aus 367	330(T), 331(T)
Aus 487	349(T), 351(T)
Aus 539	319
Aus 621	335(T)
Aus 622	335(T)
Aus 647	318
Aus 648	318
Aus 740	339(T)
Aus 743	343(T)
Aus 744	343(T)
Aus 753	338(T)
Aus 754	341(T)
Aus 787	352(T)
Aus 801	351(T)
Aus 802	349(T)

Aus Chart	Notices
Aus 818	317
Aus 822	330(T), 331(T)
Aus 824	333(T)
Aus 827	329(T), 334(T)
Aus 4060	324
Aus 4070	323
Aus 4071	323
Aus 4074	324
Aus 4601	324
Aus 4644	324, 349(T)
Aus 4708	323
Aus 4709	324
Aus 4714	323
Aus 4721	336(T)
Aus 4722	336(T)
Aus 4725	323, 338(T)
Aus 4727	350(T)

INT Chart	Notices
INT 60	324
INT 70	323
INT 71	323
INT 74	324
INT 601	324
INT 644	324, 349(T)
INT 708	323
INT 709	324
INT 714	323
INT 721	336(T)
INT 722	336(T)
INT 725	323, 338(T)
INT 727	350(T)

315 AUSTRALIA - QUEENSLAND - Hinchinbrook Channel - Light buoys

Maritime Safety Queensland Notice 131/2017

Aus 259 [NE 31/7/2015]

Delete light buoy 18° 30'.05 S 146° 18'.65 E

Aus 267 [203/2017]Delete light buoy 18° 30'.05 S 146° 18'.65 E
Delete light buoy 18° 31'.10 S 146° 19'.49 E**316 AUSTRALIA - QUEENSLAND - Horn Island to Thursday Island - Pipeline**

Maritime Safety Queensland

Aus 293 [1173/2016]Insert supply pipeline with legend *Water*, between 10° 35'.314 S 142° 14'.915 E
10° 34'.535 S 142° 14'.000 EDelete supply pipeline with legend *Water*, between 10° 35'.27 S 142° 14'.93 E
10° 34'.54 S 142° 14'.00 E**Aus 299 [162/2017]**Insert supply pipeline with legend *Water*, between 10° 35'.314 S 142° 14'.915 E
10° 34'.535 S 142° 14'.000 EDelete supply pipeline with legend *Water*, between 10° 35'.27 S 142° 14'.93 E
10° 34'.54 S 142° 14'.00 E**317 AUSTRALIA - QUEENSLAND - Round Hill Head - Nav aids**

Maritime Safety Queensland

Aus 818 [337/2016]

Insert accompanying block 24° 13'.0 S 151° 56'.0 E

318 PAPUA NEW GUINEA - Caution Bay - Restricted area; light buoy

National Maritime Safety Authority PNG

Aus 647 [543/2016]

Insert accompanying block 9° 19'.2 S 146° 58'.0 E

Aus 648 [125/2016]Insert restricted area limit, between 9° 20'.63 S 146° 58'.97 E
9° 20'.74 S 146° 59'.27 E
9° 20'.57 S 146° 59'.75 EDelete restricted area limit, between 9° 20'.63 S 146° 58'.97 E
9° 20'.69 S 146° 59'.14 E**319 PAPUA NEW GUINEA - New Ireland - Nabuto Bay to Cape Lemeris - ZOC diagram**

Australian Hydrographic Service

Aus 539 [919/2015]

Insert accompanying block 3° 30'.0 S 152° 05'.0 E

320* AUSTRALIA - WESTERN AUSTRALIA - Bunbury - The Cut - Estuary and River Entrance

Department of Transport WA Notice 94/2012

Aus 115 (plan, Port of Bunbury) [754/2016]Insert legend *Estuary and River Entrances (see Note)*, centred on 33° 18'.08 S 115° 39'.95 E
accompanying note 33° 19'.28 S 115° 40'.35 E

321 AUSTRALIA - WESTERN AUSTRALIA - Dampier - Swinging basin

Woodside Energy Ltd

Aus 59 [207/2017]

Insert	250m radius swinging circle with legend, <i>Swinging Basin</i> , centred on	20° 34'.941 S	116° 45'.811 E
	250m radius swinging circle with legend, <i>Swinging Basin</i> , centred on	20° 35'.335 S	116° 45'.559 E
	250m radius swinging circle with legend, <i>Swinging Basin</i> , centred on	20° 36'.130 S	116° 45'.000 E

322 AUSTRALIA - WESTERN AUSTRALIA - Fremantle - Gage Roads - Depths

Fremantle Ports

Aus 113 [NE 27/1/2017]

Insert	depth, 17 ₄ m	32° 02'.841 S	115° 41'.781 E
Replace	depth, 18 ₅ m, with depth, 18 ₂ m	32° 02'.78 S	115° 41'.66 E
	depth, 18 ₁ m, with depth, 17 ₈ m	32° 02'.93 S	115° 42'.22 E

323 INDIAN OCEAN - Cocos Islands to Dirck Hartog Ridge - Depths

Geoscience Australia , UKHO

Aus 4070 (INT 70) [1031/2016]

Insert	depth, 3995m, enclosed by contour	30° 22'.0 S	106° 31'.4 E
	depth, 2893m, enclosed by contour	11° 57'.0 S	95° 01'.0 E
	depth, 184m, enclosed by contour with legend, <i>PA</i>	4° 03'.0 S	94° 42'.8 E

Aus 4071 (INT 71) [1031/2016]

Insert	depth, 2893m, enclosed by contour	11° 57'.0 S	95° 01'.0 E
	legend, <i>PA</i>	4° 03'.0 S	95° 05'.0 E

Aus 4708 (INT 708) [204/2017]

Insert	depth, 3995m, enclosed by contour	30° 22'.0 S	106° 31'.4 E
--------	-----------------------------------	-------------	--------------

Aus 4714 (INT 714) [189/2013]

Replace	depth, 3840m, with depth, 2893m, enclosed by contour	11° 57'.0 S	95° 01'.0 E
---------	--	-------------	-------------

Aus 4725 (INT 725) [95/2017]

Insert	depth, 3995m, enclosed by contour	30° 22'.0 S	106° 31'.4 E
--------	-----------------------------------	-------------	--------------

324 SOUTHERN OCEAN - Depths

Geoscience Australia

Aus 4060 (INT 60) [200/2017]

Insert	depth, <i>3411m</i> , enclosed by contour	46° 38'.5 S	142° 19'.7 E
	depth, <i>3079m</i> , enclosed by contour	47° 01'.1 S	141° 45'.0 E
Replace	depth, 1956m, with depth, <i>1824m</i>	46° 27'.0 S	144° 57'.0 E
Delete	depth, 3511m and enclosing contour	47° 06'.0 S	141° 34'.0 E

Aus 4074 (INT 74) [200/2017]

Insert	depth, <i>3411m</i> , enclosed by contour	46° 38'.5 S	142° 19'.7 E
	depth, <i>3079m</i> , enclosed by contour	47° 01'.1 S	141° 45'.0 E
Replace	depth, 1956m, with depth, <i>1824m</i>	46° 27'.0 S	144° 57'.0 E
Delete	depth, 3511m and enclosing contour	47° 06'.0 S	141° 34'.0 E

Aus 4601 (INT 601) [200/2017]

Insert	contour, between	44° 00'.0 S	146° 21'.0 E
		44° 02'.0 S	146° 30'.0 E
		43° 58'.5 S	146° 39'.0 E
	depth, <i>624m</i> , enclosed by contour	44° 12'.9 S	146° 11'.5 E
	depth, <i>3937m</i> , enclosed by contour	46° 53'.0 S	142° 45'.1 E
Replace	depth, 1956m, with depth, <i>1824m</i>	46° 27'.0 S	144° 57'.0 E
Delete	depth, 2500m	46° 24'.0 S	144° 51'.0 E

Aus 4644 (INT 644) [168/2017]

Insert	depth, <i>624m</i>	44° 12'.9 S	146° 11'.5 E
Delete	depth, 695m	44° 11'.5 S	146° 09'.5 E

Aus 4709 (INT 709) [448/2016]

Insert	depth, <i>3937m</i> , enclosed by contour	46° 53'.0 S	142° 45'.1 E
	depth, <i>3411m</i> , enclosed by contour	46° 38'.5 S	142° 19'.7 E
	depth, <i>3079m</i> , enclosed by contour	47° 01'.1 S	141° 45'.0 E
	depth, <i>3429m</i> , enclosed by contour	46° 52'.0 S	142° 09'.1 E
Replace	depth, 1956m, with depth, <i>1824m</i>	46° 27'.0 S	144° 57'.0 E
Delete	depth, 2500m	46° 24'.0 S	144° 51'.0 E

325(T)/2017 AUSTRALIA - NEW SOUTH WALES - Port Jackson - Milsons Point - Harbour works
Port Authority of New South Wales Notice 13/2017

Harbour works are in progress in area bounded by the following positions:

33° 51'.08 S 151° 12'.61 E
33° 51'.02 S 151° 12'.70 E
33° 50'.94 S 151° 12'.62 E
33° 51'.00 S 151° 12'.53 E.

Barges involved in the works will display appropriate lights and shapes.

Mariners are advised to navigate with caution in the area.

Chart temporarily affected - Aus 200 - Aus 202

326(T)/2017 AUSTRALIA - QUEENSLAND - Bowen - Port Denison - Light buoy off station
Maritime Safety Queensland

The light buoy, *Fl.R.4s M2* (20° 02'.38 S 148° 15'.70 E), is off station.

Chart temporarily affected - Aus 268

327(T)/2017 AUSTRALIA - QUEENSLAND - Mackay - Pioneer River - Light beacon destroyed
Maritime Safety Queensland Notice 117(T)/2017

The port lateral light beacon, *Fl.R.2-5s* (21° 08'.48 S 149° 11'.73 E), has been destroyed.

Chart temporarily affected - Aus 249

328(T)/2017 AUSTRALIA - QUEENSLAND - Moreton Bay - Bribie Island - South Point - Light beacon destroyed
Maritime Safety Queensland Notice 142(T)/2017

The starboard lateral light beacon, *Fl.G.2-5s* (27° 06'.56 S 153° 10'.84 E), has been destroyed; a starboard lateral light buoy, *Fl.G.2-5s*, exists in situ.

Chart temporarily affected - Aus 236

329(T)/2017 AUSTRALIA - QUEENSLAND - Rattlesnake Island - Live firing
Maritime Safety Queensland Notice 138(T)/2017

Live firing activities will be conducted within a 5M radius of position 19° 02'.27 S 146° 36'.43 E from 25 April to 24 May 2017.

Mariners are advised to navigate with caution in the area.

Chart temporarily affected - Aus 256 - Aus 827

330(T)/2017 AUSTRALIA - QUEENSLAND - Shoalwater Bay - Live firing completed
Former Notice - 147(T)/2017 is cancelled
Maritime Safety Queensland Notice 47(T)/2017

Cancel this notice on receipt.

Chart formerly affected - Aus 367 - Aus 822

331(T)/2017 AUSTRALIA - QUEENSLAND - Shoalwater Bay - Live firing
 Maritime Safety Queensland Notice 141(T)/2017

Live firing will be conducted in the Shoalwater Bay training area during the period 18 to 24 May 2017.

A marine danger area extends to all internal waters bounded by the following positions:

22° 09'.00 S 150° 25'.00 E
 22° 14'.76 S 150° 20'.31 E
 22° 24'.52 S 150° 24'.57 E
 22° 25'.03 S 150° 37'.11 E
 22° 15'.28 S 150° 38'.10 E
 22° 09'.00 S 150° 37'.00 E.

All waters, creeks, beaches and other areas within the declared marine danger area are not available for access.

There will be safe anchorages available at Freshwater, Port Clinton, West Water Port Clinton, South Arm Port Clinton, Pearl Bay and Island Head Creek.

Mariners are advised to keep clear of this area throughout the above times.

Chart temporarily affected - Aus 260 - Aus 261 - Aus 367 - Aus 822

332(T)/2017 AUSTRALIA - QUEENSLAND - Shute Harbour - Wreck
 Maritime Safety Queensland Notice 119(T)/2017

A wreck marked by a special light buoy, *Fl.Y.5s*, exists in position 20° 17'.55 S 148° 46'.87 E.

Mariners are advised to navigate with caution in the area.

Chart temporarily affected - Aus 253 - Aus 269

333(T)/2017 AUSTRALIA - QUEENSLAND - Surprise Rock - Light buoy restored
Former Notice - 295(T)/2017 is cancelled
 Maritime Safety Queensland

Cancel this notice on receipt.

Chart formerly affected - Aus 252 - Aus 253 - Aus 824

334(T)/2017 AUSTRALIA - QUEENSLAND - Townsville - Sea Channel - Light beacon restored
Former Notice - 73(T)/2016 is cancelled
 Maritime Safety Queensland Notice 492/2016

Cancel this notice on receipt.

Chart formerly affected - Aus 256 - Aus 827

335(T)/2017 PAPUA NEW GUINEA - Port Moresby - Fairfax Harbour - Harbour works
Former Notice - 1039(T)/2016 is cancelled
 National Maritime Safety Authority PNG Notice 49(T)/2016, 10/2017

Harbour works are in progress in Fairfax Harbour (9° 25'.82 S 147° 06'.72 E).

Mariners are advised to navigate with caution in the area.

Chart temporarily affected - Aus 621 - Aus 622

336(T)/2017 AUSTRALIA - WESTERN AUSTRALIA - Browse Island - Production platform northwestwards
INPEX

On or about 28 May 2017 the production platform *Ichthys Explorer* and accompanying 5 tugs will be in a holding area bounded by the following positions:

14° 11'.28 S 123° 02'.88 E

14° 11'.27 S 123° 13'.18 E

14° 01'.23 S 123° 13'.17 E

14° 01'.23 S 123° 02'.88 E.

On or about 5 June 2017 *Ichthys Explorer* will then be relocated to final position 13° 56'.34 S 123° 17'.87 E where it will undergo a mooring campaign.

5M clearance is requested around *Ichthys Explorer*.

Chart temporarily affected - Aus 319 - Aus 320 - Aus 322 - Aus 4721 (INT 721) - Aus 4722 (INT 722)

337(T)/2017 AUSTRALIA - WESTERN AUSTRALIA - Bunbury - The Cut - Shoaling

Former Notice - 228(T)/2013 is cancelled

Department of Transport WA

Cancel this notice on receipt.

Chart formerly affected - Aus 115

338(T)/2017 AUSTRALIA - WESTERN AUSTRALIA - Direction Bank - Wreck

Department of Transport WA

A wreck exists in position 30° 42'.73 S 114° 59'.02 E.

Mariners are advised to navigate with caution in the area.

Chart temporarily affected - Aus 753 - Aus 4725 (INT 725)

339(T)/2017 AUSTRALIA - WESTERN AUSTRALIA - Forestier Islands - Scientific instrument northwestwards

Advisian

A subsurface scientific instrument exists in position 20° 20'.84 S 117° 33'.91 E

Chart temporarily affected - Aus 326 - Aus 740

340(T)/2017 AUSTRALIA - WESTERN AUSTRALIA - Fremantle - Swan River - Wreck salvaged

Former Notice - 990(T)/2016 is cancelled

Australian Hydrographic Service

Cancel this notice on receipt.

Chart formerly affected - Aus 112 - Aus 113

341(T)/2017 AUSTRALIA - WESTERN AUSTRALIA - Ledge Point - Scientific instrument

Department of Transport WA Notice 52/2017

A special light buoy, Q.Y, exists in position 31° 06'.93 S 115° 22'.49 E.

Chart temporarily affected - Aus 754

342(T)/2017 AUSTRALIA - WESTERN AUSTRALIA - Onslow - Dredging operations completed

Former Notice - 1215(T)/2016 is cancelled

Australian Hydrographic Service

Cancel this notice on receipt.

Chart formerly affected - Aus 64 - Aus 69

343(T)/2017 AUSTRALIA - WESTERN AUSTRALIA - Onslow to Ashburton - Survey operations completed*Former Notice* - 185(T)/2017 is cancelled

Pilbara Ports Authority Notice A3(T)/2017, Department of Transport WA Notice 32/2017

Cancel this notice on receipt.

Chart formerly affected - Aus 64 - Aus 69 - Aus 328 - Aus 743 - Aus 744**344(T)/2017 AUSTRALIA - WESTERN AUSTRALIA - Port Hedland - Hunt Point - Light buoys***Former Notice* - 1091(T)/2016 is cancelled

Pilbara Ports Authority Notice PH13/2016

Special buoys exist in the following positions:

20° 18'.32 S 118° 34'.48 E

20° 18'.31 S 118° 34'.41 E

20° 18'.28 S 118° 34'.35 E

20° 18'.39 S 118° 34'.30 E.

Chart temporarily affected - Aus 52 - Aus 53 - Aus 54**345(T)/2017 AUSTRALIA - WESTERN AUSTRALIA - Port Hedland - Drilling operations completed***Former Notice* - 117(T)/2017 is cancelled

Pilbara Ports Authority Notice PH9(T)/2017

Cancel this notice on receipt.

Chart formerly affected - Aus 52 - Aus 53**346(T)/2017 AUSTRALIA - WESTERN AUSTRALIA - Safety Bay - Dredging operations completed***Former Notice* - 1129(T)/2016 is cancelled

Australian Hydrographic Service

Cancel this notice on receipt.

Chart formerly affected - Aus 116**347(T)/2017 AUSTRALIA - WESTERN AUSTRALIA - Success Bank - Obstructions removed***Former Notice* - 582(T)/2016 is cancelled

Australian Hydrographic Service

Cancel this notice on receipt.

Chart formerly affected - Aus 112 - Aus 117**348(T)/2017 AUSTRALIA - WESTERN AUSTRALIA - Wyndham Wharf - Light buoy restored***Former Notice* - 189(T)/2017 is cancelled

Department of Transport WA

Cancel this notice on receipt.

Chart formerly affected - Aus 32

349(T)/2017 SOUTHERN OCEAN - Bass Strait - Hogan Island - Underwater operations

Australian Maritime Safety Authority Auscoast Warning 77/2017

SPV *Investigator* is conducting underwater operations in an area bounded by the following positions:

39° 14'.0 S 146° 47'.0 E

39° 14'.0 S 147° 02'.0 E

38° 59'.0 S 147° 02'.0 E

38° 59'.0 S 146° 47'.0 E.

Mariners are advised to navigate with caution in the area. 2.5M clearance requested.

Chart temporarily affected - Aus 148 - Aus 357 - Aus 487 - Aus 802 - Aus 4644 (INT 644)

350(T)/2017 SOUTHERN OCEAN - Great Australian Bight - Ceduna Terrace - Underwater operations completed

Former Notice - 311(T)/2017 is cancelled

Australian Maritime Safety Authority

Cancel this notice on receipt.

Chart formerly affected - Aus 4727 (INT 727)

351(T)/2017 AUSTRALIA - VICTORIA - Cape Paterson - Underwater operations southwards completed

Former Notice - 312(T)/2017 is cancelled

Australian Maritime Safety Authority

Cancel this notice on receipt.

Chart formerly affected - Aus 487 - Aus 801

352(T)/2017 AUSTRALIA - VICTORIA - Port Campbell - Seismic survey completed

Former Notice - 80(T)/2017 is cancelled

Origin Energy

Cancel this notice on receipt.

Chart formerly affected - Aus 141 - Aus 349 - Aus 787

353(T)/2017 AUSTRALIA - VICTORIA - Port Phillip - Swanson Dock - Harbour works completed

Former Notice - 850(T)/2016 is cancelled

Port of Melbourne Corporation Notice 137/2017

Cancel this notice on receipt.

Chart formerly affected - Aus 154

354(T)/2017 AUSTRALIA - VICTORIA - Western Port - Stony Point - Shoaling southeastwards removed

Former Notice - 1223(T)/2016 is cancelled

LINX Cargo Care Group Notice 135/2017

Cancel this notice on receipt.

Chart formerly affected - Aus 150 - Aus 151

355(T)/2017 AUSTRALIA - VICTORIA - Western Port - Phillip Island - Shoaling northwards removed

Former Notice - 514(T)/2008 is cancelled

LINX Cargo Care Group Notice 134/2017

Cancel this notice on receipt.

Chart formerly affected - Aus 150 - Aus 151

II

HYDROGRAPHIC REPORTS

NIL

III

NAVIGATION WARNINGS

The Australian Hydrographic Service will no longer compile Section III of the Australian Notices to Mariners. For the most up to date navigation warnings please refer to:

AMSA Navigation Warnings

<http://amsa.gov.au/search-and-rescue/distress-and-safety-comms/msi/msi-email/index.asp>

New Zealand Notices to Mariners (Navarea XIV warnings)

<http://www.linz.govt.nz/sea/maritime-safety/notices-mariners>

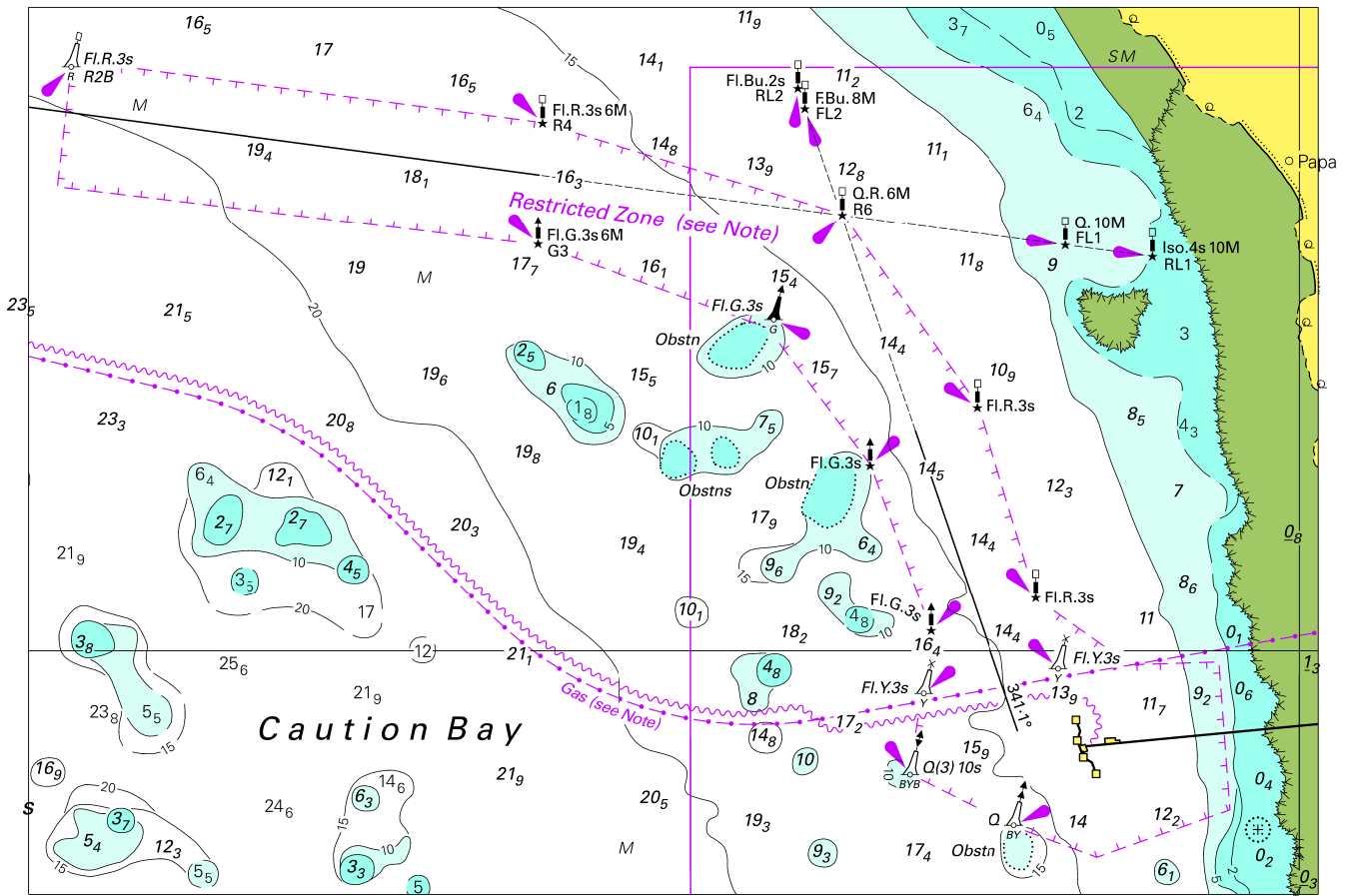
To accompany Australian Notice to Mariners 320/2017

ESTUARY AND RIVER ENTRANCES

The crossing of coastal bars and entry to rivers and estuaries is potentially dangerous. Bars and entrances are dynamic in nature, hence the depth and preferred approach may vary. Leading beacons and other navigational aids may not always indicate the best approach. If mariners are unsure of the condition at a particular bar or entrance, local information should be sought prior to crossing.

Note for chart Aus 115

To accompany Australian Notice to Mariners 318/2017



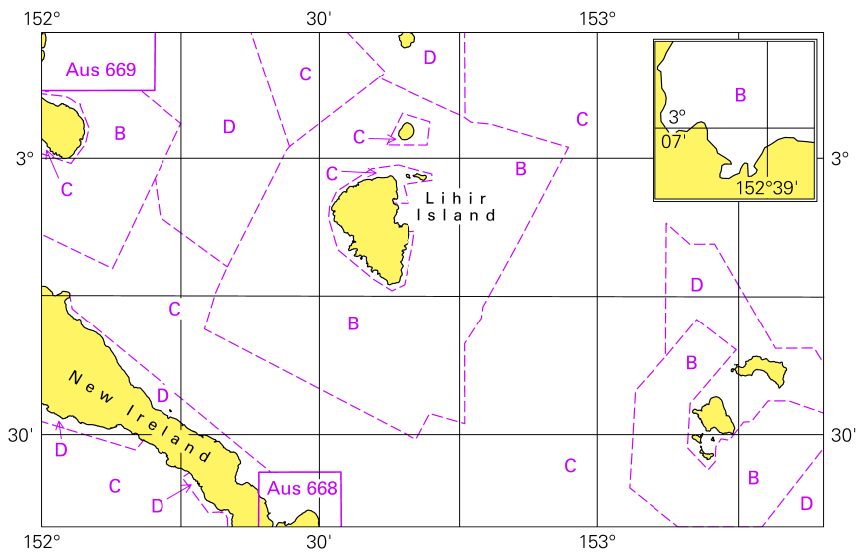
Block for Chart Aus 647

© Commonwealth of Australia 2017

(170.7 x 117.4mm)

To accompany Australian Notice to Mariners 319/2017

Zone of Confidence (ZOC) Diagram



Block for Chart Aus 539

© Commonwealth of Australia 2017