



21 April 2017

Edition 8

Australian Notices to Mariners are the authority for correcting Australian Charts and Publications

AUSTRALIAN NOTICES TO MARINERS

Notices 276 - 314



Published fortnightly by the Australian Hydrographic Service

Commodore B.K. BRACE RAN
Hydrographer of Australia

SECTIONS.

- I. **Australian Notices to Mariners, including blocks and notes.**
- II. **Hydrographic Reports.**
- III. **Navigational Warnings.**

SUPPLEMENTS.

- I. **Tracings**
- II. **Cumulative List of Australian Notices to Mariners.**
- III. **Cumulative List of Temporary and Preliminary Australian Notices to Mariners.**
- IV. **Temporary and Preliminary Notices in force.**
- V. **Amendments to Admiralty List of Lights and Fog Signals (Vol K), Radio Signals (NP 281(2), 282, 283(2), 285, 286(4)) and Sailing Directions (NP 9, 13, 14, 15, 33, 34, 35, 36, 39, 44, 51, 60, 61, 62, 100, 136).**

© Commonwealth of Australia 2017

This work is copyright. Apart from any use permitted under the Copyright Act 1968, no part may be reproduced by any process, adapted, communicated or commercially exploited without prior written permission from The Commonwealth represented by the Australian Hydrographic Service.

IMPORTANT NOTICE

This edition of Notices to Mariners includes all significant information affecting AHS products which the AHS has become aware of since the last edition. All reasonable efforts have been made to ensure the accuracy and completeness of the information, including third party information, on which these updates are based. The AHS regards third parties from which it receives information as reliable, however the AHS cannot verify all such information and errors may therefore exist. The AHS does not accept liability for errors in third party information.

GENERAL INSTRUCTIONS

The substance of these notices should be inserted on the charts affected.

Bearings are referred to the true compass and are reckoned clockwise from North; those relating to lights are given as seen by an observer from seaward.

Positions quoted in notices relate to WGS84 which is the horizontal datum for all charts produced by the Australian Hydrographic Service.

The range quoted for a light is its nominal range.

Depths are with reference to the chart datum of each chart. Heights are above mean high water springs or mean higher high water, as appropriate.

The capital letter (P) or (T) after the number of any notice denotes a preliminary or temporary notice respectively, which are contained separately at the end of the permanent notices.

A star (*) adjacent to the number of a notice indicates that the notice is based on original information.

REPORTING OF DANGERS

Mariners are particularly requested to notify the AUSTRALIAN HYDROGRAPHIC SERVICE, Locked Bag 8801 Wollongong, NSW 2500 (Fax 02-4223 6599, e-mail datacentre@hydro.gov.au or, alternatively by filling in and submitting the [Hydrographic Notes](#) forms located on the web site – www.hydro.gov.au), immediately on the discovery of new dangers or suspected dangers to navigation. For changes or defects in aids to navigation notify AusSAR (Fax 02-6230 6868 or email rccaus@amsa.gov.au).

AUTHORISED USE

Copies of Australian notices are available free of charge from the Australian Hydrographic Service (AHS) website (www.hydro.gov.au) and through the eNotices (email) service (www.hydro.gov.au/enotices/enotices.htm).

Individual Notices may be copied for the purpose of inserting Notice substance on official charts and publications. Paper copies may be printed by chart agents and distributed to customers on a cost recovery basis. Participating chart agents are listed on the AHS website as providing a 'Paper Notices to Mariners' service (www.hydro.gov.au/webapps/jsp/agents/agents-list.jsp). Copies of the notices may not be sold for profit without prior written agreement.

NUMERICAL INDEX OF NOTICES TO MARINERS

Edition No 8

Notices	Aus Chart, INT Chart, ENC Cell, AHP, BA Pubs
276	Products - New Charts, New Editions, Withdrawn Charts
277	Aus 202
278	Aus 237
279	Aus 241
280	Aus 270
281	Aus 4, 301
282	Aus 485, 776
283	Aus 182
284	Aus 143, 158
285	Aus 800
286(T)	Aus 193
287(T)	Aus 200, 202
288(T)	Aus 269
289(T)	Aus 253, 269
290(T)	Aus 247, 265, 819, 820
291(T)	Aus 245
292(T)	Aus 249, 823
293(T)	Aus 259, 267
294(T)	Aus 256
295(T)	Aus 252, 253, 824
296(T)	Aus 252, 253, 824, 825
297(T)	Aus 4
298(T)	Aus 643
299(T)	Aus 397, 399, 684, 4060, 4604, 4622, INT 60, 604, 622
300(T)	Aus 396, 547, 674
301(T)	Aus 314, 319, 320, 4721, 4722, INT 721, 722
302(T)	Aus 69
303(T)	Aus 119
304(T)	Aus 314, 318, 319, 320
305(T)	Aus 59
306(T)	Aus 84
307(T)	Aus 328, 329, 743, 744
308(T)	Aus 327, 328, 4723, INT 723
309(T)	Aus 328, 744
310(T)	Aus 40, 732, 733
311(T)	Aus 4727, INT 727
312(T)	Aus 487, 801
313(T)	Aus 349, 787
314(T)	Aus 153

NUMERICAL INDEX OF CHARTS AFFECTED

Edition No 8

Aus Chart	Notices
Aus 4	281, 297(T)
Aus 40	310(T)
Aus 59	305(T)
Aus 69	302(T)
Aus 84	306(T)
Aus 119	303(T)
Aus 143	284
Aus 153	314(T)
Aus 158	284
Aus 182	283
Aus 193	286(T)
Aus 200	287(T)
Aus 202	277, 287(T)
Aus 237	278
Aus 241	279
Aus 245	291(T)
Aus 247	290(T)
Aus 249	292(T)
Aus 252	295(T), 296(T)
Aus 253	289(T), 295(T), 296(T)
Aus 256	294(T)
Aus 259	293(T)
Aus 265	290(T)
Aus 267	293(T)
Aus 269	288(T), 289(T)
Aus 270	280
Aus 301	281
Aus 314	301(T), 304(T)
Aus 318	304(T)
Aus 319	301(T), 304(T)
Aus 320	301(T), 304(T)
Aus 327	308(T)
Aus 328	307(T), 308(T), 309(T)
Aus 329	307(T)
Aus 349	313(T)
Aus 396	300(T)
Aus 397	299(T)
Aus 399	299(T)
Aus 485	282
Aus 487	312(T)
Aus 547	300(T)
Aus 643	298(T)
Aus 674	300(T)
Aus 684	299(T)
Aus 732	310(T)
Aus 733	310(T)
Aus 743	307(T)
Aus 744	307(T), 309(T)
Aus 776	282
Aus 787	313(T)
Aus 800	285
Aus 801	312(T)
Aus 819	290(T)
Aus 820	290(T)

Aus Chart	Notices
Aus 823	292(T)
Aus 824	295(T), 296(T)
Aus 825	296(T)
Aus 4060	299(T)
Aus 4604	299(T)
Aus 4622	299(T)
Aus 4721	301(T)
Aus 4722	301(T)
Aus 4723	308(T)
Aus 4727	311(T)

INT Chart	Notices
INT 60	299(T)
INT 604	299(T)
INT 622	299(T)
INT 721	301(T)
INT 722	301(T)
INT 723	308(T)
INT 727	311(T)

276 AUSTRALIA - Products - New Charts, New Editions, Withdrawn Charts

UKHO

New Charts

Chart	Title and Geographical limits	Scale	Publication Date	Remarks
NIL				

New Electronic Navigation Chart (Aus ENC)

Cell Name	Title	Publication Date	Remarks
NIL			

New Editions and Withdrawn Charts

Chart	Title	Scale	Publication Date	Remarks
NIL				

Admiralty publication

NP No	Title	Date	Remarks
NP13 & e-NP13	Admiralty Sailing Directions. Australia Pilot Volume 1 (Fifth Edition) 2017.	27/4/2017	The Fourth Edition 2014 is cancelled.

Chart permanently withdrawn

Charts listed above as withdrawn no longer meet chart carriage requirements and should be marked as "superseded" and replaced with the new chart/ new edition listed prior to passage through the area covered by the new chart.

When placing orders with a chart agent between notice of forthcoming edition and its publication, mariners should advise whether their order pertains to the current edition or the new edition.

For further details refer to the AHS website at www.hydro.gov.au for new edition and new chart stock arrival information.

277 AUSTRALIA - NEW SOUTH WALES - Port Jackson - Berrys Bay - Wrecks

Australian Hydrographic Service

Aus 202 [199/2017]

Insert	accompanying block	33° 50'.86 S	151° 11'.95 E
--------	--------------------	--------------	---------------

278 AUSTRALIA - QUEENSLAND - Brisbane River - Luggage Point - Maintained depth limit

Australian Hydrographic Service

Aus 237 [1171/2016]

Delete	dashed line, between	27° 22'.77 S	153° 09'.59 E
		27° 22'.81 S	153° 09'.62 E

279 AUSTRALIA - QUEENSLAND - Great Sandy Strait - Long Middle Bank - Light buoys

Maritime Safety Queensland

Aus 241 [158/2017]

Replace	light buoy with starboard lateral pillar light buoy, <i>Fl.G.2-5s</i> , with topmark	25° 16'.2 S	152° 58'.7 E
	light buoy with starboard lateral pillar light buoy, <i>Q.G.</i> , with topmark	25° 17'.1 S	152° 59'.5 E

Delete	light buoy	25° 17'.7 S	152° 59'.5 E
--------	------------	-------------	--------------

280 AUSTRALIA - QUEENSLAND - Port Douglas - Depths; infrastructure; nav aids

Australian Maritime Safety Authority , Maritime Safety Queensland

Aus 270 (plan, Port Douglas) [156/2017]

Insert	accompanying block	16° 28'.8 S	145° 28'.0 E
--------	--------------------	-------------	--------------

281 AUSTRALIA - QUEENSLAND - Weipa - Moorings
Maritime Safety Queensland

Aus 4 (plan, Port of Weipa) [1239/2016]

Insert	dashed line with legend, <i>Moorings</i> , between	12° 40'.10 S	141° 50'.82 E
		12° 40'.42 S	141° 51'.81 E
		12° 40'.61 S	141° 51'.88 E
		12° 41'.06 S	141° 51'.92 E
		12° 41'.12 S	141° 52'.17 E
		12° 40'.78 S	141° 52'.28 E
		12° 40'.31 S	141° 51'.75 E
		12° 40'.05 S	141° 51'.08 E
		12° 40'.10 S	141° 50'.82 E
	dashed line with legend, <i>Small Craft Moorings</i> , between	12° 39'.97 S	141° 51'.70 E
		12° 40'.08 S	141° 51'.55 E
		12° 39'.88 S	141° 50'.99 E
Delete	mooring buoy	12° 40'.76 S	141° 51'.91 E
Aus 301 [91/2017]			
Insert	legend, <i>Moorings</i>	12° 46'.8 S	141° 54'.3 E

282 AUSTRALIA - SOUTH AUSTRALIA - Yorke Peninsula - Point Turton - Light
Department of Planning, Transport and Infrastructure SA

Aus 485 [97/2017]

Amend light range to 3M 34° 56'.0 S 137° 21'.2 E

Aus 776 [166/2017]

Amend light range to 3M 34° 56'.0 S 137° 21'.2 E

Delete light sector and legend, W, emanating from light 34° 56'.0 S 137° 21'.2 E

283 AUSTRALIA - VICTORIA - Lakes Entrance - Ninety Mile Beach - Depth
Gippsland Ports

Aus 182 (plan, Lakes Entrance) [211/2017]

Delete depth, 5m, and enclosing contour 37° 53'.83 S 147° 57'.21 E

284 AUSTRALIA - VICTORIA - Point Lonsdale - Historic wreck southwards
Australian Hydrographic Service

Aus 143 [101/2017]

Insert restricted area circle with magenta legend, *Historic Wk (see Note)*, centred on 38° 23'.06 S 144° 36'.46 E

Aus 158 [101/2017]

Insert restricted area circle with magenta legend, *Historic Wk (see Note)*, centred on 38° 23'.057 S 144° 36'.460 E

285 AUSTRALIA - TASMANIA - Cape Barren Island - Puncheon Point - Historic wreck
Australian Hydrographic Service

Aus 800 [13/2017]

Insert stranded wreck with magenta legend, *Historic Wk (see Note)* 40° 17'.16 S 148° 19'.80 E

Delete wreck 40° 17'.3 S 148° 19'.8 E

286(T)/2017 AUSTRALIA - NEW SOUTH WALES - Jervis Bay - Darling Road - Light buoy relit

Former Notice - 214(T)/2017 is cancelled
Department of Defence

Cancel this notice on receipt.

Chart formerly affected - Aus 193**287(T)/2017 AUSTRALIA - NEW SOUTH WALES - Port Jackson - Seafourth Bluff to Longnose Point - Drilling operations**

Port Authority of New South Wales Notice 12/2017

Drilling operations are in progress as follows:

in an area bounded by the following positions:

33° 50'.76 S 151° 11'.12 E

33° 50'.84 S 151° 11'.26 E

33° 50'.76 S 151° 11'.60 E

33° 50'.60 S 151° 11'.57 E;

in White Bay (33° 51'.82 S 151° 11'.03 E); and

in the vicinity of Seafourth Bluff (33° 48'.32 S 151° 14'.03 E).

A 25m exclusion zone exists around each drilling location and will be marked by special light buoys, *Fl. Y. 3s*.

The vessels will display appropriate lights and shapes.

Mariners are advised to navigate with caution in the area.

Chart temporarily affected - Aus 200 - Aus 202**288(T)/2017 AUSTRALIA - QUEENSLAND - Airlie Beach - Abel Point - Dredging operations completed**

Former Notice - 462(T)/2016 is cancelled
Maritime Safety Queensland

Cancel this notice on receipt.

Chart formerly affected - Aus 269**289(T)/2017 AUSTRALIA - QUEENSLAND - Airlie Beach - Abel Point Marina - Harbour works**

Maritime Safety Queensland Notice 129(T)/2017

Demolition and debris removal works are in progress in the vicinity of position 20° 15'.87 S 148° 42'.65 E.

Vessels *Swordfish*, *PMG 120* and *PMG 181* are on site and will display appropriate lights and shapes and monitor VHF Ch 16.

Mariners are advised to navigate with caution in the area.

Chart temporarily affected - Aus 253 - Aus 269**290(T)/2017 AUSTRALIA - QUEENSLAND - Fitzroy River to Port Alma - Nav aids off station; nav aids destroyed; depths unreliable; obstructions**

Maritime Safety Queensland Notice 115(T)/2017

Nav aids in Port Alma and the Fitzroy River may be off station or destroyed due to a severe weather event. Depths may vary to those charted and underwater obstructions may exist.

Mariners are advised to navigate with caution in the area.

Chart temporarily affected - Aus 247 - Aus 265 - Aus 819 - Aus 820

291(T)/2017 AUSTRALIA - QUEENSLAND - Gladstone - North Channel - Shoaling
Maritime Safety Queensland Notice 111(T)/2017

Shoaling exists in the vicinity of light beacon N6 (23° 47'.14 S 151° 18'.39 E).

Mariners are advised to navigate with caution.

Chart temporarily affected - Aus 245

292(T)/2017 AUSTRALIA - QUEENSLAND - Hay Point - Obstruction
Maritime Safety Queensland Notice 128(T)/2017

Anchorage N3 (21° 11'.0 S 149° 22'.0 E) is closed due to a lost anchor.

Chart temporarily affected - Aus 249 - Aus 823

**293(T)/2017 AUSTRALIA - QUEENSLAND - Hinchinbrook Channel - Lucinda to Haycock Island - Light buoy unlit;
light beacon unlit**

Maritime Safety Queensland Notice 127(T)/2017, 132(T)/2017

The special light buoy, *Fl.Y.2s* (18° 30'.75 S 146° 19'.09 E), is unlit.

The light beacon, *Fl.R.2-5s No14* (18° 28'.34 S 146° 13'.00 E), is unlit.

Chart temporarily affected - Aus 259 - Aus 267

294(T)/2017 AUSTRALIA - QUEENSLAND - Magnetic Island - Nelly Bay - Diving operations
Maritime Safety Queensland Notice 130(T)/2017

Diving operations are in progress in the vicinity of position 19° 09'.8 S 146° 51'.2 E.

Vessels involved in the operations will monitor VHF Ch 16.

Mariners are advised to navigate with caution in the area.

Chart temporarily affected - Aus 256

295(T)/2017 AUSTRALIA - QUEENSLAND - Surprise Rock - Light buoy off station
Maritime Safety Queensland Notice 96(T)/2017

The isolated danger light buoy, *Fl(2)6s* (20° 21'.33 S 149° 01'.59 E), is off station.

Chart temporarily affected - Aus 252 - Aus 253 - Aus 824

296(T)/2017 AUSTRALIA - QUEENSLAND - Surprise Rock to Pinnacle Point - Lights destroyed; light buoy off station
Former Notice - 259(T)/2017 is cancelled
Australian Maritime Safety Authority

Cancel this notice on receipt.

Chart formerly affected - Aus 252 - Aus 253 - Aus 824 - Aus 825

297(T)/2017 AUSTRALIA - QUEENSLAND - Weipa - Cora Bank - Mooring buoys
Former Notice - 207(T)/2016 is cancelled
Maritime Safety Queensland

Cancel this notice on receipt.

Chart formerly affected - Aus 4

298(T)/2017 PAPUA NEW GUINEA - Huon Gulf - Light buoy off station

National Maritime Safety Authority PNG Notice 9(T)/2017

The isolated danger light buoy, Q(2)5s (6° 48'.38 S 146° 58'.28 E), is off station.

Chart temporarily affected - Aus 643**299(T)/2017 PAPUA NEW GUINEA - Madehas Island - Light unlit**

National Maritime Safety Authority PNG Notice 8(T)/2017

The light, *Fl. 10s 137m 16M* (5° 27'.63 S 154° 38'.06 E), is unlit.**Chart temporarily affected - Aus 397 - Aus 399 - Aus 684 - Aus 4060 (INT 60) - Aus 4604 (INT 604) - Aus 4622 (INT 622)****300(T)/2017 PAPUA NEW GUINEA - Stettin Bay - Light beacon restored***Former Notice - 263(T)/2017 is cancelled*

National Maritime Safety Authority PNG Notice 7/2017

Cancel this notice on receipt.

Chart formerly affected - Aus 396 - Aus 547 - Aus 674**301(T)/2017 AUSTRALIA - TIMOR SEA - Sahul Banks - Seismic survey**

Australian Maritime Safety Authority Auscoast 57/2017

The vessel *Fugro Equator*, towing a 900m cable, is conducting a seismic survey in an area bounded by the following positions:

13° 46'.97 S 123° 19'.27 E

13° 02'.83 S 124° 32'.01 E

12° 00'.34 S 124° 32'.01 E

12° 00'.34 S 124° 23'.74 E

13° 02'.83 S 124° 23'.74 E.

Mariners are advised to navigate with caution in the area. 5M clearance requested.

Chart temporarily affected - Aus 314 - Aus 319 - Aus 320 - Aus 4721 (INT 721) - Aus 4722 (INT 722)**302(T)/2017 AUSTRALIA - WESTERN AUSTRALIA - Ashburton - Light buoys restored***Former Notices - 184(T)/2017, 229(T)/2017 are cancelled*

Pilbara Ports Authority

Cancel this notice on receipt.

Chart formerly affected - Aus 69**303(T)/2017 AUSTRALIA - WESTERN AUSTRALIA - Bandy Creek Boat Harbour - Dredging operations**

Department of Transport WA Notice 53/2017

The dredge *Cooper II* is conducting dredging operations in the entrance to Bandy Creek Boat Harbour (33° 50'.17 S 121° 56'.00 E).

The dredge has deployed anchors and will display appropriate lights and shapes. A 60m floating pipeline marked by special light buoys exists in the area.

The dredge will monitor VHF Ch 16, UHF 15 and Meg Ch 90. Mariners must make contact prior to navigating past the dredge.

Mariners are advised to navigate with caution in the area.

Chart temporarily affected - Aus 119

304(T)/2017 AUSTRALIA - WESTERN AUSTRALIA - Browse Island - Subsea operations northeastwards
Shell Australia

Vessel *SapuraKencana Constructor* is conducting subsea operations as follows:

in an area bounded by the following positions:

12° 59'.0 S 124° 29'.5 E
12° 59'.0 S 124° 26'.5 E
12° 55'.0 S 124° 26'.5 E
12° 55'.0 S 124° 29'.5 E;

within a 1M radius of position 13° 49'.02 S 123° 19'.60 E; and

in the vicinity of positions 13° 30'.27 S 128° 30'.83 E and 13° 30'.33 S 123° 29'.79 E.

Chart temporarily affected - Aus 314 - Aus 318 - Aus 319 - Aus 320

305(T)/2017 AUSTRALIA - WESTERN AUSTRALIA - Dampier - Harbour works
Pilbara Ports Authority Notice D7(T)/2017

Works associated with the remediation of the western side of the Dampier Cargo Wharf (DCW) (20° 36'.80 S 116° 44'.92 E) are in progress.

During the works there will be restrictions on vessel size and permitted operations at the western side of the DCW. Any vessel with a length overall greater than 100m will require the approval of the Harbour Master.

Mariners are advised to navigate with caution in the area.

Chart temporarily affected - Aus 59

306(T)/2017 AUSTRALIA - WESTERN AUSTRALIA - Jurien Bay - Dredging operations completed

Former Notice - 991(T)/2016 is cancelled
Department of Transport WA Notice 88/2016

Cancel this notice on receipt.

Chart formerly affected - Aus 84

307(T)/2017 AUSTRALIA - WESTERN AUSTRALIA - Muiron Islands - Underwater operations northwards
Australian Maritime Safety Authority Auscoast Warning 61/2017

The vessel *Southern Ocean* is conducting underwater operations in an area bounded by the following positions:

21° 35'.95 S 114° 44'.21 E
21° 35'.95 S 114° 03'.53 E
21° 08'.44 S 114° 03'.53 E
21° 08'.44 S 114° 44'.21 E.

Mariners are advised to navigate with caution in the area. 2-5M clearance requested.

Chart temporarily affected - Aus 328 - Aus 329 - Aus 743 - Aus 744

308(T)/2017 AUSTRALIA - WESTERN AUSTRALIA - Rankin Bank - Survey operations southwestwards completed

Former Notice - 1189(T)/2016 is cancelled
Blue Ocean Monitoring

Cancel this notice on receipt.

Chart formerly affected - Aus 327 - Aus 328 - Aus 4723 (INT 723)

309(T)/2017 AUSTRALIA - WESTERN AUSTRALIA - Thevenard Island - Subsea operations northwestwards
BHP Billiton Petroleum Pty Ltd

Vessel *Southern Supporter* is conducting subsea operations in the vicinity of the Griffin Field (21° 13'.0 S 114° 39'.0 E).

Chart temporarily affected - Aus 328 - Aus 744

310(T)/2017 AUSTRALIA - WESTERN AUSTRALIA - Yampi Sound - Parakeet Channel - Comber Rock - Light beacon relit

Former Notice - 271(T)/2017 is cancelled
Department of Transport WA

Cancel this notice on receipt.

Chart formerly affected - Aus 40 - Aus 732 - Aus 733

311(T)/2017 SOUTHERN OCEAN - Great Australian Bight - Ceduna Terrace - Underwater operations

Australian Maritime Safety Authority Auscoast Warning 63/2017

SPV *Investigator* is conducting underwater operations in an area bounded by the following positions:

36° 20'.0 S 129° 00'.0 E

36° 20'.0 S 133° 00'.0 E

34° 04'.0 S 133° 00'.0 E

34° 04'.0 S 129° 00'.0 E.

Mariners are advised to navigate with caution in the area. 2.5M clearance requested.

Chart temporarily affected - Aus 4727 (INT 727)

312(T)/2017 AUSTRALIA - VICTORIA - Cape Paterson - Underwater operations southwards

Australian Maritime Safety Authority Auscoast Warning 64/2017

SPV *TEK Ocean Spirit* is conducting underwater operations in an area bounded by the following positions:

39° 26'.4 S 145° 28'.5 E

39° 26'.4 S 145° 40'.9 E

38° 50'.0 S 145° 40'.9 E

38° 50'.0 S 145° 28'.5 E.

Mariners are advised to navigate with caution in the area. 2.5M clearance requested.

Chart temporarily affected - Aus 487 - Aus 801

313(T)/2017 AUSTRALIA - VICTORIA - Port Campbell - Underwater operations southwards completed

Former Notice - 234(T)/2017 is cancelled
Australian Maritime Safety Authority

Cancel this notice on receipt.

Chart formerly affected - Aus 349 - Aus 787

314(T)/2017 AUSTRALIA - VICTORIA - Port Phillip - Geelong - Barge removed

Former Notice - 1166(T)/2016 is cancelled
Parks Victoria Notice 302(T)/2016

Cancel this notice on receipt.

Chart formerly affected - Aus 153

II

HYDROGRAPHIC REPORTS

NIL

III

NAVIGATION WARNINGS

The Australian Hydrographic Service will no longer compile Section III of the Australian Notices to Mariners. For the most up to date navigation warnings please refer to:

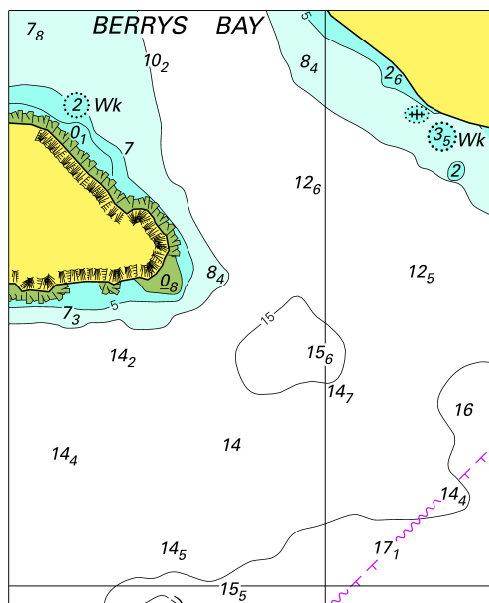
AMSA Navigation Warnings

<http://amsa.gov.au/search-and-rescue/distress-and-safety-comms/msi/msi-email/index.asp>

New Zealand Notices to Mariners (Navarea XIV warnings)

<http://www.linz.govt.nz/sea/maritime-safety/notices-mariners>

To accompany Australian Notice to Mariners 277/2017



© Commonwealth of Australia 2017
Block for Chart Aus 202 (64.6 x 78.7mm)

To accompany Australian Notice to Mariners 280/2017

