



Australian Notices to Mariners are the authority for correcting Australian Charts and Publications

---

# AUSTRALIAN NOTICES TO MARINERS

Notices 239 - 275

Cumulative List – April 2017

List of Temporary and Preliminary Notices in force 

Published fortnightly by the Australian Hydrographic Service

Commodore B.K. BRACE RAN  
*Hydrographer of Australia*

---

## SECTIONS.

- I. Australian Notices to Mariners, including blocks and notes.
- II. Hydrographic Reports.
- III. Navigational Warnings.

## SUPPLEMENTS.

- I. Tracings
- II. Cumulative List of Australian Notices to Mariners.
- III. Cumulative List of Temporary and Preliminary Australian Notices to Mariners.
- IV. Temporary and Preliminary Notices in force.
- V. Amendments to Admiralty List of Lights and Fog Signals (Vol K), Radio Signals (NP 281(2), 282, 283(2), 285, 286(4)) and Sailing Directions (NP 9, 13, 14, 15, 33, 34, 35, 36, 39, 44, 51, 60, 61, 62, 100, 136).

---

© Commonwealth of Australia 2017

This work is copyright. Apart from any use permitted under the Copyright Act 1968, no part may be reproduced by any process, adapted, communicated or commercially exploited without prior written permission from The Commonwealth represented by the Australian Hydrographic Service.

## IMPORTANT NOTICE

This edition of Notices to Mariners includes all significant information affecting AHS products which the AHS has become aware of since the last edition. All reasonable efforts have been made to ensure the accuracy and completeness of the information, including third party information, on which these updates are based. The AHS regards third parties from which it receives information as reliable, however the AHS cannot verify all such information and errors may therefore exist. The AHS does not accept liability for errors in third party information.

---

## GENERAL INSTRUCTIONS

The substance of these notices should be inserted on the charts affected.

Bearings are referred to the true compass and are reckoned clockwise from North; those relating to lights are given as seen by an observer from seaward.

Positions quoted in notices relate to WGS84 which is the horizontal datum for all charts produced by the Australian Hydrographic Service.

The range quoted for a light is its nominal range.

Depths are with reference to the chart datum of each chart. Heights are above mean high water springs or mean higher high water, as appropriate.

The capital letter (P) or (T) after the number of any notice denotes a preliminary or temporary notice respectively, which are contained separately at the end of the permanent notices.

A star (\*) adjacent to the number of a notice indicates that the notice is based on original information.

---

## REPORTING OF DANGERS

Mariners are particularly requested to notify the AUSTRALIAN HYDROGRAPHIC SERVICE, Locked Bag 8801 Wollongong, NSW 2500 (Fax 02-4223 6599, e-mail [datacentre@hydro.gov.au](mailto:datacentre@hydro.gov.au) or, alternatively by filling in and submitting the [Hydrographic Notes](#) forms located on the web site – [www.hydro.gov.au](http://www.hydro.gov.au)), immediately on the discovery of new dangers or suspected dangers to navigation. For changes or defects in aids to navigation notify AusSAR (Fax 02-6230 6868 or email [rccaus@amsa.gov.au](mailto:rccaus@amsa.gov.au)).

---

## AUTHORISED USE

Copies of Australian notices are available free of charge from the Australian Hydrographic Service (AHS) website ([www.hydro.gov.au](http://www.hydro.gov.au)) and through the eNotices (email) service ([www.hydro.gov.au/enotices/enotices.htm](http://www.hydro.gov.au/enotices/enotices.htm)).

Individual Notices may be copied for the purpose of inserting Notice substance on official charts and publications. Paper copies may be printed by chart agents and distributed to customers on a cost recovery basis. Participating chart agents are listed on the AHS website as providing a 'Paper Notices to Mariners' service ([www.hydro.gov.au/webapps/jsp/agents/agents-list.jsp](http://www.hydro.gov.au/webapps/jsp/agents/agents-list.jsp)). Copies of the notices may not be sold for profit without prior written agreement.

## NUMERICAL INDEX OF NOTICES TO MARINERS

### Edition No 7

| Notices | Aus Chart, INT Chart, ENC Cell, AHP, BA Pubs                            |
|---------|---|
| 239     | Products - New Charts, New Editions, Withdrawn Charts                   |
| 240     | Aus 200, 209, 219, 811  |
| 241     | Aus 809   |
| 242     | Aus 15  |
| 243     | Aus 244, 245, 271   |
| 244     | Aus 247   |
| 245     | Aus 236   |
| 246     | Aus 236   |
| 247     | Aus 252, 253, 269   |
| 248     | Aus 327   |
| 249     | Aus 349, 787  |
| 250     | Aus 163, 799  |
| 251     | Cumulative List of Australian Notices to Mariners - April 2017          |
| 252(T)  | Aus 242   |
| 253(P)  | Aus 262, 263  |
| 254(T)  | Aus 252, 253, 824, 825  |
| 255(P)  | Aus 235, 236  |
| 256(T)  | Aus 235, 236, 237, 238, 814, 815  |
| 257(T)  | Aus 252, 253, 824, 825  |
| 258(T)  | Aus 256, 827  |
| 259(T)  | Aus 252, 253, 824, 825  |
| 260(T)  | Aus 249, 250, 823, 824  |
| 261(T)  | Aus 251, 252, 253, 254, 255, 268, 269, 824, 825, 826                    |
| 262(T)  | Aus 521, 522, 4603, 4604, 4620, 4621, 4622, INT 603, 604, 620, 621, 622 |
| 263(T)  | Aus 396, 547, 674   |
| 264(T)  | Aus 379, 505, 621   |
| 265(T)  | Aus 26, 28  |
| 266(T)  | Aus 319, 320  |
| 267(T)  | Aus 115   |
| 268(T)  | Aus 328   |
| 269(T)  | Aus 327, 4723, INT 723  |
| 270(T)  | Aus 327   |
| 271(T)  | Aus 40, 732, 733  |
| 272(T)  | Aus 155   |
| 273(T)  | Aus 154   |
| 274(T)  | Aus 154   |
| 275(T)  | TEMPORARY AND PRELIMINARY NOTICES                                       |

## NUMERICAL INDEX OF CHARTS AFFECTED

### Edition No 7

| Aus Chart | Notices                             |
|-----------|-------------------------------------|
| Aus 15    | 242                                 |
| Aus 26    | 265(T)                              |
| Aus 28    | 265(T)                              |
| Aus 40    | 271(T)                              |
| Aus 115   | 267(T)                              |
| Aus 154   | 273(T), 274(T)                      |
| Aus 155   | 272(T)                              |
| Aus 163   | 250                                 |
| Aus 200   | 240                                 |
| Aus 209   | 240                                 |
| Aus 219   | 240                                 |
| Aus 235   | 255(P), 256(T)                      |
| Aus 236   | 245, 246, 255(P), 256(T)            |
| Aus 237   | 256(T)                              |
| Aus 238   | 256(T)                              |
| Aus 242   | 252(T)                              |
| Aus 244   | 243                                 |
| Aus 245   | 243                                 |
| Aus 247   | 244                                 |
| Aus 249   | 260(T)                              |
| Aus 250   | 260(T)                              |
| Aus 251   | 261(T)                              |
| Aus 252   | 247, 254(T), 257(T), 259(T), 261(T) |
| Aus 253   | 247, 254(T), 257(T), 259(T), 261(T) |
| Aus 254   | 261(T)                              |
| Aus 255   | 261(T)                              |
| Aus 256   | 258(T)                              |
| Aus 262   | 253(P)                              |
| Aus 263   | 253(P)                              |
| Aus 268   | 261(T)                              |
| Aus 269   | 247, 261(T)                         |
| Aus 271   | 243                                 |
| Aus 319   | 266(T)                              |
| Aus 320   | 266(T)                              |
| Aus 327   | 248, 269(T), 270(T)                 |
| Aus 328   | 268(T)                              |
| Aus 349   | 249                                 |
| Aus 379   | 264(T)                              |
| Aus 396   | 263(T)                              |
| Aus 505   | 264(T)                              |
| Aus 521   | 262(T)                              |
| Aus 522   | 262(T)                              |
| Aus 547   | 263(T)                              |
| Aus 621   | 264(T)                              |
| Aus 674   | 263(T)                              |
| Aus 732   | 271(T)                              |
| Aus 733   | 271(T)                              |
| Aus 787   | 249                                 |
| Aus 799   | 250                                 |
| Aus 809   | 241                                 |
| Aus 811   | 240                                 |
| Aus 814   | 256(T)                              |
| Aus 815   | 256(T)                              |
| Aus 823   | 260(T)                              |

| Aus Chart | Notices                                |
|-----------|--|
| Aus 824   | 254(T), 257(T), 259(T), 260(T), 261(T) |
| Aus 825   | 254(T), 257(T), 259(T), 261(T)         |
| Aus 826   | 261(T)                                 |
| Aus 827   | 258(T)                                 |
| Aus 4603  | 262(T)                                 |
| Aus 4604  | 262(T)                                 |
| Aus 4620  | 262(T)                                 |
| Aus 4621  | 262(T)                                 |
| Aus 4622  | 262(T)                                 |
| Aus 4723  | 269(T)                                 |

| INT Chart | Notices |
|-----------|---------|
| INT 603   | 262(T)  |
| INT 604   | 262(T)  |
| INT 620   | 262(T)  |
| INT 621   | 262(T)  |
| INT 622   | 262(T)  |
| INT 723   | 269(T)  |

**239 AUSTRALIA - Products - New Charts, New Editions, Withdrawn Charts**

UKHO

**New Charts**

| Chart | Title and Geographical limits | Scale | Publication Date | Remarks |
|-------|-------------------------------|-------|------------------|---------|
| NIL   |                               |       |                  |         |

**New Electronic Navigation Chart (Aus ENC)**

| Cell Name | Title | Publication Date | Remarks |
|-----------|-------|------------------|---------|
| NIL       |       |                  |         |

**New Editions and Withdrawn Charts**

| Chart | Title | Scale | Publication Date | Remarks |
|-------|-------|-------|------------------|---------|
| NIL   |       |       |                  |         |

**Admiralty publication**

| NP No         | Title   | Date     | Remarks                                      |
|---------------|---|----------|--|
| NP39 & e-NP39 | Admiralty Sailing Directions. South Indian Ocean Pilot (Fifteenth Edition) 2017.  | 6/4/2017 | The Fourteenth Edition 2014 is cancelled.    |
| NP282(2)      | Admiralty List of Radio Signals. Radio Aids to Navigation, Differential GPS (DGPS), Legal Time, Radio Time Signals and Electronic Position Fixing System. The Americas, Far East and Oceania. | 6/4/2017 | The 2016/2017 Edition of NP282 is cancelled. |

**Chart permanently withdrawn**

Charts listed above as withdrawn no longer meet chart carriage requirements and should be marked as "superseded" and replaced with the new chart/ new edition listed prior to passage through the area covered by the new chart.

When placing orders with a chart agent between notice of forthcoming edition and its publication, mariners should advise whether their order pertains to the current edition or the new edition.

For further details refer to the AHS website at [www.hydro.gov.au](http://www.hydro.gov.au) for new edition and new chart stock arrival information.

**240 AUSTRALIA - NEW SOUTH WALES - Bondi Bay to Crescent Head - Light buoys**

NSW Roads and Maritime Services

**Aus 200 [154/2017]**

|        |  |               |                |
|--------|--|---------------|----------------|
| Insert | special pillar light buoy, Fl. Y.5s, without topmark | 33° 53'.790 S | 151° 16'.819 E |
|--------|--|---------------|----------------|

**Aus 209 [NE 1/7/2016]**

|        |  |               |                |
|--------|--|---------------|----------------|
| Insert | special pillar light buoy, Fl. Y.5s, without topmark | 32° 40'.498 S | 152° 11'.535 E |
|--------|--|---------------|----------------|

**Aus 219 (plan, Hastings River) [499/2016]**

|      |               |               |                |
|------|---------------|---------------|----------------|
| Move | light buoy to | 31° 28'.85 S  | 152° 56'.13 E  |
|      |               | 31° 28'.885 S | 152° 56'.193 E |

**Aus 219 (plan, Cape Hawke Harbour) [499/2016]**

|      |               |               |                |
|------|---------------|---------------|----------------|
| Move | light buoy to | 32° 10'.44 S  | 152° 30'.96 E  |
|      |               | 32° 10'.465 S | 152° 30'.978 E |

**Aus 811 [803/2016]**

|        |  |              |               |
|--------|--|--------------|---------------|
| Insert | special pillar light buoy, Fl. Y.5s, without topmark | 31° 10'.98 S | 152° 59'.34 E |
|--------|--|--------------|---------------|

**241 AUSTRALIA - NEW SOUTH WALES - Lake Munmorah - Chimneys**

NSW Roads and Maritime Services

**Aus 809 [196/2017]**

|        |                                  |             |              |
|--------|----------------------------------|-------------|--------------|
| Delete | chimney and legend, 2 CHYS (160) | 33° 12'.7 S | 151° 32'.6 E |
|--------|----------------------------------|-------------|--------------|

**242 AUSTRALIA - QUEENSLAND - Drimmie Peninsula - McIntyre Point - Beacon**

Rio Tinto

**Aus 15 (plan, Gove Harbour) [1244/2016]**

Delete beacon 12° 13'.46 S 136° 41'.69 E

**243 AUSTRALIA - QUEENSLAND - Gladstone - Calliope River - Lights; navline**

Maritime Safety Queensland

**Aus 244 [1138/2015]**Insert dashed line with legend *2F.Bu* ≠ 198°, between 23° 48'.810 S 151° 13'.800 E  
23° 48'.495 S 151° 13'.910 E**Aus 245 [130/2017]**Insert dashed line, between 23° 48'.876 S 151° 13'.777 E  
23° 48'.495 S 151° 13'.910 E

Amend bearing to 198° 23° 48'.90 S 151° 13'.75 E

**Aus 271 [1101/2015]**Insert dashed line, between 23° 48'.876 S 151° 13'.777 E  
bearing 198° 23° 48'.495 S 151° 13'.910 E  
23° 48'.52 S 151° 13'.89 EAmend light to *F.Bu.6m* 23° 49'.04 S 151° 13'.72 E  
light to *F.Bu.8m* 23° 49'.06 S 151° 13'.71 E

Delete bearing 198.1° 23° 48'.89 S 151° 13'.76 E

**244 AUSTRALIA - QUEENSLAND - Keppel Bay - Cawarral Creek to Shoal Bay - Depths**

Maritime Safety Queensland

**Aus 247 [1175/2016]**Insert accompanying block A 23° 11'.7 S 150° 48'.8 E  
accompanying block B 23° 19'.5 S 150° 48'.0 E**245 AUSTRALIA - QUEENSLAND - Moreton Bay - Polka Point - Depths**

Maritime Safety Queensland

**Aus 236 [202/2017]**

Insert accompanying block 27° 30'.0 S 153° 24'.3 E

**246 AUSTRALIA - QUEENSLAND - Moreton Bay - Light sectors**

Maritime Safety Queensland Notice 498/2013

**Aus 236 [245/2017]**Amend light sector legend to *Bu* 27° 18'.0 S 153° 13'.0 E  
light sector legend to *Bu* 27° 17'.0 S 153° 13'.7 E  
light sector legend to *W* 27° 12'.8 S 153° 16'.3 E

**247 AUSTRALIA - QUEENSLAND - Shute Harbour - Light; wreck**

Former Notice - 299(T)/2016 is cancelled  
Maritime Safety Queensland

**Aus 252 [133/2017]**

|        |                    |              |               |
|--------|--------------------|--------------|---------------|
| Insert | accompanying block | 20° 16'.0 S  | 148° 47'.0 E  |
|        | stranded wreck     | 20° 17'.79 S | 148° 46'.81 E |

**Aus 253 [133/2017]**

|        |                    |               |                |
|--------|--------------------|---------------|----------------|
| Insert | accompanying block | 20° 16'.8 S   | 148° 48'.1 E   |
|        | stranded wreck     | 20° 17'.794 S | 148° 46'.813 E |

**Aus 269 (plan, Shute Harbour) [133/2017]**

|        |                    |               |                |
|--------|--------------------|---------------|----------------|
| Insert | accompanying block | 20° 16'.8 S   | 148° 48'.1 E   |
|        | stranded wreck     | 20° 17'.794 S | 148° 46'.813 E |

**248 AUSTRALIA - WESTERN AUSTRALIA - Glomar Shoal - Well northwards**

Quadrant Energy

**Aus 327 [164/2017]**

|        |  |              |               |
|--------|--|--------------|---------------|
| Insert | danger circle to enclose depth, 384m, with legend, <i>Well</i> | 18° 53'.14 S | 116° 33'.40 E |
|--------|--|--------------|---------------|

**249 AUSTRALIA - VICTORIA - Port Campbell - Wells southwards**

Origin Energy

**Aus 349 [1115/2016]**

|        |                           |              |               |
|--------|---------------------------|--------------|---------------|
| Insert | danger circle, centred on | 39° 06'.70 S | 142° 55'.73 E |
|--------|---------------------------|--------------|---------------|

**Aus 787 [214/2014]**

|        |   |              |               |
|--------|---|--------------|---------------|
| Insert | danger circle with legend, <i>Well</i> , centred on | 39° 06'.70 S | 142° 55'.73 E |
|        | danger circle with legend, <i>Well</i> , centred on | 39° 14'.37 S | 142° 54'.82 E |

**250 AUSTRALIA - TASMANIA - Burnie - Pilot boarding place**

Marine and Safety Tasmania Notice M50/2017

**Aus 163 [NE 12/8/2016]**

|            |                   |             |              |
|------------|-------------------|-------------|--------------|
| Substitute | accompanying note | 41° 04'.5 S | 145° 53'.8 E |
|------------|-------------------|-------------|--------------|

|      |                      |              |               |
|------|----------------------|--------------|---------------|
| Move | pilot boarding place | 41° 01'.63 S | 145° 57'.20 E |
|      | to                   | 41° 00'.00 S | 145° 58'.70 E |

**Aus 799 [822/2016]**

|            |                   |             |              |
|------------|-------------------|-------------|--------------|
| Substitute | accompanying note | 41° 09'.5 S | 145° 35'.0 E |
|------------|-------------------|-------------|--------------|

|      |                      |              |               |
|------|----------------------|--------------|---------------|
| Move | pilot boarding place | 41° 01'.63 S | 145° 57'.20 E |
|      | to                   | 41° 00'.00 S | 145° 58'.70 E |

**251 AUSTRALIA - Cumulative List of Australian Notices to Mariners - April 2017**

Australian Hydrographic Service

The Cumulative List of Australian Notices to Mariners - April 2017 is issued as an [accompanying supplement](#). It lists all permanent notices affecting charts in the Area of Australian Charting Responsibility published in the preceding two years since Edition 7 of 2015 dated 10 April 2015, and includes Edition 7 of 2017 dated 7 April 2017. It will be revised in October 2017.

A supplement is available on the website which is revised fortnightly.

**252(T)/2017 AUSTRALIA - QUEENSLAND - Bundaberg - Burnett River - Nav aids off station**  
Maritime Safety Queensland Notice 87(T)/2017

Nav aids in the Burnett River (24° 45'.3 S 152° 24'.0 E) may be off station due to recent flooding.

Mariners are advised to navigate with caution in the area.

**Chart temporarily affected - Aus 242**

**253(P)/2017 AUSTRALIA - QUEENSLAND - Cairns - Shoaling**  
Ports North

Shoaling which has extended the drying bank westwards exists between positions 16° 54'.25 S 145° 47'.43 E and 16° 53'.87 S 145° 47'.64 E.

Charts will be updated in due course.

**Chart which will be affected - Aus 262 - Aus 263**

**254(T)/2017 AUSTRALIA - QUEENSLAND - Molle Channel - Submarine power cable**  
Maritime Safety Queensland Notice 89(T)/2017

A submarine power cable has been severed in position 20° 16'.54 S 148° 47'.33 E and is marked by a special light buoy, *Fl. Y. 5s.*

**Chart temporarily affected - Aus 252 - Aus 253 - Aus 824 - Aus 825**

**255(P)/2017 AUSTRALIA - QUEENSLAND - Moreton Bay - North East Channel - Shoaling**  
Maritime Safety Queensland

Latest survey shows shoaler depths than those charted may exist in North East Channel, in the area between NE3 light buoy (27° 04'.67 S 153° 21'.43 E) and NE2 light buoy (26° 57'.57 S 153° 20'.32 E).

**Chart which will be affected - Aus 235 - Aus 236**

**256(T)/2017 AUSTRALIA - QUEENSLAND - Moreton Bay to Point Cartwright - Nav aids off station; nav aids destroyed; depths unreliable; obstructions**

Maritime Safety Queensland

Nav aids between Moreton Bay and Point Cartwright may be off station or destroyed due to a severe weather event. Depths may vary to those charted and underwater obstructions may exist.

Mariners are advised to navigate with caution in the area.

**Chart temporarily affected - Aus 235 - Aus 236 - Aus 237 - Aus 238 - Aus 814 - Aus 815**

**257(T)/2017 AUSTRALIA - QUEENSLAND - Pioneer Rocks - Light beacon relit**

*Former Notice - 113(T)/2017 is cancelled*

Maritime Safety Queensland

Cancel this notice on receipt.

**Chart formerly affected - Aus 252 - Aus 253 - Aus 824 - Aus 825**

**258(T)/2017 AUSTRALIA - QUEENSLAND - Rattlesnake Island - Live firing completed**

*Former Notice - 220(T)/2017 is cancelled*

Maritime Safety Queensland Notice 79(T)/2017

Cancel this notice on receipt.

**Chart formerly affected - Aus 256 - Aus 827**

**259(T)/2017 AUSTRALIA - QUEENSLAND - Surprise Rock to Pinnacle Point - Lights destroyed; light buoy off station**  
 Australian Maritime Safety Authority Auscoast Warning 51/17, 53/17, Maritime Safety Queensland Notice 96(T)/2017

The following lights have been destroyed:

| <i>Position</i>            | <i>Remarks</i>          |
|----------------------------|-------------------------|
| 20° 03'.70 S 148° 57'.85 E | <i>Fl(4)20s 21m 11M</i> |
| 20° 15'.04 S 149° 10'.45 E | <i>Fl.5s 109m 10M</i>   |

The isolated danger light buoy, *Fl(2)6s* (20° 21'.33 S 149° 01'.59 E), is off station.

**Chart temporarily affected - Aus 252 - Aus 253 - Aus 824 - Aus 825**

**260(T)/2017 AUSTRALIA - QUEENSLAND - Victor Island to Slade Point - Nav aids off station; nav aids destroyed; depths unreliable; obstructions**

Maritime Safety Queensland Notice 103(T)/2017, 104(T)/2017

Nav aids between Victor Island and Slade Point may be off station or destroyed due to a severe weather event. Depths may vary to those charted and underwater obstructions may exist.

Mariners are advised to navigate with caution in the area.

**Chart temporarily affected - Aus 249 - Aus 250 - Aus 823 - Aus 824**

**261(T)/2017 AUSTRALIA - QUEENSLAND - Whitsunday Island to Abbot Point - Nav aids off station; nav aids destroyed; depths unreliable; obstructions**

Maritime Safety Queensland Notice 84(T)/2017, 86(T)/2017, 97(T)/2017

Nav aids between Whitsunday Island and Abbot Point may be off station or destroyed due to a severe weather event. Depths may vary to those charted and underwater obstructions may exist.

Mariners are advised to navigate with caution in the area.

**Chart temporarily affected - Aus 251 - Aus 252 - Aus 253 - Aus 254 - Aus 255 - Aus 268 - Aus 269 - Aus 824 - Aus 825 - Aus 826**

**262(T)/2017 PAPUA NEW GUINEA - Cape Ward Hunt - Light unlit**

National Maritime Safety Authority PNG Notice 4(T)/2017

The light, *Fl.4s 65m 10M* (8° 03'.70 S 148° 07'.69 E), is unlit.

**Chart temporarily affected - Aus 521 - Aus 522 - Aus 4603 (INT 603) - Aus 4604 (INT 604) - Aus 4620 (INT 620) - Aus 4621 (INT 621) - Aus 4622 (INT 622)**

**263(T)/2017 PAPUA NEW GUINEA - Stettin Bay - Light beacon unlit**

National Maritime Safety Authority PNG Notice 5(T)/2017

The light beacon, *Fl.R.3s 6m 4M* (5° 31'.31 S 150° 18'.07 E), is unlit.

**Chart temporarily affected - Aus 396 - Aus 547 - Aus 674**

**264(T)/2017 PAPUA NEW GUINEA - Vabukori - Light unlit**

National Maritime Safety Authority PNG Notice 3(T)/2017

The light, *Oc.6s 90m 10M* (9° 29'.79 S 147° 11'.34 E), is unlit.

**Chart temporarily affected - Aus 379 - Aus 505 - Aus 621**

**265(T)/2017 AUSTRALIA - NORTHERN TERRITORY - Darwin - South Shell Island - Light beacon unlit**

Department of Infrastructure, Planning and Logistics NT Notice 18(T)/2017

The light beacon, *F.Bu.11m 6M* (12° 29'.80 S 130° 53'.20 E), is unlit.

**Chart temporarily affected - Aus 26 - Aus 28**

**266(T)/2017 AUSTRALIA - WESTERN AUSTRALIA - Browse Island - Pipeline operations northwestwards completed**  
*Former Notice - 776(T)/2016 is cancelled*  
 Wilhelmsen Ships Service Pty Ltd

Cancel this notice on receipt.

**Chart formerly affected - Aus 319 - Aus 320**

**267(T)/2017 AUSTRALIA - WESTERN AUSTRALIA - Bunbury - Dredging operations**  
 Department of Transport WA Notice 45/2017

The dredge *River Bee* is conducting dredging operations in the Port of Bunbury (33° 19'.0 S 115° 39'.2 E).

Mariners are advised to navigate with caution in the area.

**Chart temporarily affected - Aus 115**

**268(T)/2017 AUSTRALIA - WESTERN AUSTRALIA - Montebello Islands - Subsea operations northwestwards**  
 Edda Accommodation

MV *Edda Fides* is conducting subsea operations in the vicinity of position 19° 54'.18 S 115° 16'.67 E.

**Chart temporarily affected - Aus 328**

**269(T)/2017 AUSTRALIA - WESTERN AUSTRALIA - Rankin Bank - Drill rig**  
*Former Notice - 29(T)/2017 is cancelled*  
 MODU *Ocean Apex*

Drill rig *Ocean Apex* is conducting drilling operations in position 19° 49'.77 S 115° 39'.50 E.

**Chart temporarily affected - Aus 327 - Aus 4723 (INT 723)**

**270(T)/2017 AUSTRALIA - WESTERN AUSTRALIA - Rankin Bank - Mooring buoys**  
*Former Notice - 188(T)/2017 is cancelled*  
 Australian Offshore Solutions

12 yellow mooring buoys, *Fl.3s*, exist within 1M radius of 19° 47'.6 S 115° 43'.5 E.

**Chart temporarily affected - Aus 327**

**271(T)/2017 AUSTRALIA - WESTERN AUSTRALIA - Yampi Sound - Parakeet Channel - Comber Rock - Light beacon unlit**  
 Department of Transport WA

The isolated danger light beacon, *Fl(2)5s* (16° 06'.40 S 123° 39'.59 E), is unlit.

**Chart temporarily affected - Aus 40 - Aus 732 - Aus 733**

**272(T)/2017 AUSTRALIA - VICTORIA - Port Phillip - Williamstown - Buoy restored**  
*Former Notice - 237(T)/2017 is cancelled*  
 Parks Victoria Notice 103/2017

Cancel this notice on receipt.

**Chart formerly affected - Aus 155**

**273(T)/2017 AUSTRALIA - VICTORIA - Port Phillip - Yarra River - Diving operations completed**

*Former Notice* - 81(T)/2017 is cancelled

Victorian Ports Corporation Notice 109/2017

Cancel this notice on receipt.

**Chart formerly affected - Aus 154****274(T)/2017 AUSTRALIA - VICTORIA - Port Phillip - Yarra River - Short Road Wharf - Harbour works**

Victorian Ports Corporation (Melbourne) Notice 110(T)/2017

Harbour works are in progress in an area bounded by light beacons No33 (37° 50'.13 S 144° 53'.89 E) and No35 (37° 49'.94 S 144° 53'.92 E) and the coastline.

Four light buoys exist between light beacons No33 and No35.

Mariners are advised to navigate with caution in the area.

**Chart temporarily affected - Aus 154**

**275(T)/2017 AUSTRALIA - TEMPORARY AND PRELIMINARY NOTICES**

Former Notice - 39(T)/2017 is cancelled  
 Australian Hydrographic Service

| <i>Notice</i>    | <i>Charts affected</i>                       | <i>Locality and Subject</i>       |
|------------------|--|-----------------------------------|
|                  |  | <b>BASS STRAIT</b>                |
|                  |  | <i>King Island</i>                |
| <b>1401/2015</b> | Aus487 789 AX00487S                          | Scientific instruments            |
|                  |  | <i>Ninety Mile Beach</i>          |
| <b>121/2017</b>  | Aus357 487                                   | Survey operations                 |
| <b>434/2014</b>  | Aus357 4644                                  | Light unlit                       |
|                  |  | <b>CORAL SEA</b>                  |
|                  |  | <i>Bampton Reef</i>               |
| <b>639/2015</b>  | Aus4604 AX04604U                             | Light buoy off station northwards |
|                  |  | <i>Diamond Islets</i>             |
| <b>225/2017</b>  | Aus614 4620 4621                             | Shoaling                          |
|                  |  | <b>NEW SOUTH WALES</b>            |
|                  |  | <i>Batemans Bay</i>               |
| <b>965/2016</b>  | Aus191                                       | Dredging operations               |
|                  |  | <i>Cabbage Tree Bay</i>           |
| <b>50/2016</b>   | Aus197 200 201 AX00200T 00201T               | Scientific instruments            |
|                  |  | <i>Cape Baily to Ben Buckler</i>  |
| <b>52/2016</b>   | Aus197 200 808 809 AX00200T<br>00808S 00809S | Scientific instruments            |
|                  |  | <i>Cape Byron</i>                 |
| <b>709/2016</b>  | Aus813                                       | Obstructions eastwards            |
|                  |  | <i>Clarence River</i>             |
| <b>43/2015</b>   | Aus222                                       | Obstructions                      |
| <b>823/2016</b>  | Aus222                                       | Shoaling                          |
| <b>213/2017</b>  | Aus222 812 813                               | Harbour works                     |
|                  |  | <i>Crowdy Head</i>                |
| <b>1073/2016</b> | Aus811                                       | Light buoy off station            |
|                  |  | <i>Green Cape</i>                 |
| <b>653/2016</b>  | Aus806                                       | Light buoy off station eastwards  |
|                  |  | <i>Hawkesbury River</i>           |
| <b>939/2015</b>  | Aus204 217 AX00215T                          | Light buoy                        |
|                  |  | <i>Jervis Bay</i>                 |
| <b>1113/2015</b> | Aus193 AX00193P 00193T<br>AXA0193T           | Lights unlit                      |
| <b>214/2017</b>  | Aus193                                       | Light buoy unlit                  |
|                  |  | <b>NEW ZEALAND</b>                |
| <b>108/2017</b>  | Aus197 489 808 4060 4601 4602<br>4604 4643   | Survey operations                 |
|                  |  | <i>Point Danger</i>               |
| <b>824/2016</b>  | Aus220                                       | Scientific instrument             |
|                  |  | <i>Port Jackson</i>               |
| <b>461/2016</b>  | Aus200 201                                   | Light buoys withdrawn             |
| <b>710/2016</b>  | Aus200 201                                   | Harbour works                     |
| <b>65/2017</b>   | Aus200 202                                   | Harbour works                     |
| <b>175/2017</b>  | Aus200 201                                   | Scientific instrument             |

## 275(T)/2017 AUSTRALIA - TEMPORARY AND PRELIMINARY NOTICES

| <i>Notice</i>  | <i>Charts affected</i>  | <i>Locality and Subject</i>  |
|--|---|--|
| <b>680/2015</b><br><b>400/2016</b>   | Aus194 195<br>Aus194  | <i>Port Kembla</i><br>Dredging operations; light withdrawn<br>Exclusion zone   |
| <b>512/2016</b>  | Aus220  | <i>Tweed River</i><br>Dredging operations  |
| <b>966/2016</b><br><b>1035/2016</b>  | Aus192<br>Aus192  | <i>Twofold Bay</i><br>Berth damaged<br>Scientific instruments  |
| <b>NORTHERN TERRITORY</b>  |   |  |
| <b>790/2014</b><br><b>143/2015</b><br><b>893/2015</b><br><b>182/2017</b><br><b>265/2017</b>  | Aus26 28 AX00026T<br>Aus26 AX00026T<br>Aus26 28 AX00026T<br>Aus25<br>Aus26 28 | <i>Darwin</i><br>Harbour works<br>Obstruction<br>Scientific instruments<br>Light buoy unlit<br>Light beacon unlit                              |
| <b>894/2015</b>  | Aus28   | <i>East Arm</i><br>Lights  |
| <b>1193/2014</b>   | Aus20   | <i>East Vernon Island</i><br>Obstruction   |
| <b>1262/2016</b>   | Aus310 4721   | <i>Evans Shoal</i><br>Drill rig eastwards  |
| <b>183/2017</b>  | Aus17 718   | <i>Maningrida to Hawkesbury Point</i><br>Shoaling  |
| <b>773/2016</b>  | Aus23 722   | <i>Medina Inlet</i><br>Light buoy unlit  |
| <b>QUEENSLAND</b>  |   |  |
| <b>659/2016</b><br><b>18/2017</b>  | Aus255 268 825 826<br>Aus255  | <i>Abbot Point</i><br>Scientific instruments<br>Mooring buoys  |
| <b>462/2016</b><br><b>215/2017</b>   | Aus269<br>Aus252 253  | <i>Airlie Beach</i><br>Dredging operations<br>Wreck  |
| <b>269/2014</b><br><b>884/2016</b><br><b>968/2016</b>  | Aus268<br>Aus268<br>Aus268  | <i>Bowen</i><br>Wreck<br>Light beacon destroyed<br>Harbour works   |
| <b>1005/2015</b>   | Aus301  | <i>Boyd Point</i><br>Scientific instruments  |
| <b>1181/2016</b><br><b>1205/2016</b><br><b>66/2017</b><br><b>144/2017</b><br><b>176/2017</b> | Aus238<br>Aus237<br>Aus238<br>Aus236 237 238<br>Aus238                        | <i>Brisbane River</i><br>Harbour works; light beacon withdrawn<br>Harbour works<br>Light unlit<br>Dredging operations<br>Scientific instrument |
| <b>605/2016</b><br><b>19/2017</b><br><b>252/2017</b>   | Aus242<br>Aus242<br>Aus242  | <i>Bundaberg</i><br>Shoaling<br>Harbour works<br>Nav aids off station  |
| <b>606/2016</b>  | Aus490 818 819  | <i>Bunker Group</i><br>Foul ground westwards   |

## 275(T)/2017 AUSTRALIA - TEMPORARY AND PRELIMINARY NOTICES

| <i>Notice</i>   | <i>Charts affected</i>   | <i>Locality and Subject</i>  |
|---|--|--|
| 1153/2016   | Aus814   | <i>Burleigh Head</i><br>Scientific instruments   |
| 1121/2016<br>253/2017                                     | Aus263 264<br>Aus262 263   | <i>Cairns</i><br>Dredging operations<br>Shoaling   |
| 1214/2013<br>912/2014                                     | Aus826 827<br>Aus826 827   | <i>Cape Bowling Green</i><br>Scientific instrument<br>Light buoy off station eastwards                         |
| 660/2016  | Aus826   | <i>Cape Upstart</i><br>Light buoy unlit  |
| 926/2016  | Aus270   | <i>Cooktown</i><br>Obstruction   |
| 211/2013<br>661/2016                                      | Aus819<br>Aus819   | <i>Fitzroy River</i><br>Wreck<br>Scientific instrument   |
| 1182/2016   | Aus816   | <i>Gardner Bank</i><br>Wreck   |
| 579/2014<br>568/2016<br>1154/2016<br>68/2017              | Aus245 246 819<br>Aus245 271<br>Aus244 245 271<br>Aus244 245 271 | <i>Gladstone</i><br>Scientific instruments<br>Harbour works<br>Diving operations<br>Harbour works              |
| 145/2017  | Aus230   | <i>Gold Coast</i><br>Shoaling  |
| 769/2016  | Aus247   | <i>Great Keppel Island</i><br>Light buoys  |
| 258/2016<br>664/2016<br>971/2016<br>1183/2016<br>109/2017 | Aus241 817<br>Aus241<br>Aus241 817<br>Aus241 817<br>Aus241 817   | <i>Great Sandy Strait</i><br>Light buoys<br>Scientific instrument<br>Shoaling<br>Wreck<br>Light beacon unlit   |
| 1250/2015   | Aus254   | <i>Hamilton Island</i><br>Harbour works  |
| 401/2016<br>665/2016<br>20/2017<br>110/2017<br>217/2017   | Aus250<br>Aus249 250 823<br>Aus250<br>Aus249 823<br>Aus250       | <i>Hay Point</i><br>Scientific instrument<br>Light unlit<br>Obstructions<br>Obstruction<br>Dredging operations |
| 602/2013  | Aus259 828   | <i>Hinchinbrook Channel</i><br>Wreck   |
| 1369/2015   | Aus828   | <i>Hinchinbrook Island</i><br>Light buoy withdrawn   |
| 67/2016   | Aus6   | <i>Karumba</i><br>Shoaling   |
| 757/2011<br>758/2011                                      | Aus252<br>Aus252   | <i>Laguna Quays</i><br>Lights unlit; light beacons damaged<br>Shoaling   |

## 275(T)/2017 AUSTRALIA - TEMPORARY AND PRELIMINARY NOTICES

| <i>Notice</i>   | <i>Charts affected</i>   | <i>Locality and Subject</i>   |
|---|--|---|
| <b>743/2015</b>   | Aus259 267   | <i>Lucinda</i><br>Light buoy off station; light buoy unlit  |
| <b>69/2017</b>  | Aus249 250   | <i>Mackay</i><br>Scientific instruments   |
| <b>379/2014</b><br><b>1072/2014</b>   | Aus256<br>Aus256   | <i>Magnetic Island</i><br>Scientific instrument<br>Scientific instrument  |
| <b>254/2017</b>   | Aus252 253 824 825   | <i>Molle Channel</i><br>Submarine power cable   |
| <b>740/2014</b><br><b>666/2016</b><br><b>1122/2016</b><br><b>1207/2016</b><br><b>111/2017</b><br><b>112/2017</b><br><b>177/2017</b><br><b>255/2017</b>                  | Aus236<br>Aus236<br>Aus235 236<br>Aus236<br>Aus236<br>Aus236<br>Aus236<br>Aus235 236       | <i>Moreton Bay</i><br>Wreck<br>Shoaling<br>Light buoy<br>Scientific instrument<br>Beacon destroyed<br>Wreck<br>Dredging operations<br>Shoaling  |
| <b>256/2017</b>   | Aus235 236 237 238 814 815   | <i>Moreton Bay to Point Cartwright</i><br>Nav aids off station; nav aids destroyed; depths unreliable;<br>obstructions  |
| <b>467/2016</b>   | Aus816   | <i>North Gardner Bank</i><br>Wreck  |
| <b>714/2016</b>   | Aus235 236   | <i>Pumicestone Channel</i><br>Scientific instruments  |
| <b>376/2015</b>   | Aus294   | <i>Red Island Point</i><br>Light buoys unlit  |
| <b>147/2017</b>   | Aus367 822   | <i>Shoalwater Bay</i><br>Live firing  |
| <b>148/2017</b>   | Aus252 253 269   | <i>Shute Harbour</i><br>Harbour works   |
| <b>259/2017</b>   | Aus252 253 824 825   | <i>Surprise Rock to Pinnacle Point</i><br>Lights destroyed; light buoy off station  |
| <b>833/2016</b>   | Aus293 299   | <i>Thursday Island</i><br>Dolphin damaged   |
| <b>1061/2013</b><br><b>925/2014</b><br><b>190/2015</b><br><b>73/2016</b><br><b>469/2016</b><br><b>513/2016</b><br><b>571/2016</b><br><b>672/2016</b><br><b>222/2017</b> | Aus257<br>Aus257<br>Aus257<br>Aus256 827<br>Aus257<br>Aus257<br>Aus257<br>Aus257<br>Aus257 | <i>Townsville</i><br>Wreck<br>Wreck; light buoy<br>Light buoy withdrawn<br>Light beacon damaged<br>Harbour works<br>Harbour works<br>Depths; nav aids<br>Light buoys withdrawn<br>Scientific instrument |
| <b>1274/2013</b>  | Aus831 832   | <i>Two Islands</i><br>Wreck   |
| <b>260/2017</b>   | Aus249 250 823 824   | <i>Victor Island to Slade Point</i><br>Nav aids off station; nav aids destroyed; depths unreliable;<br>obstructions   |

## 275(T)/2017 AUSTRALIA - TEMPORARY AND PRELIMINARY NOTICES

| <i>Notice</i>          | <i>Charts affected</i>                        | <i>Locality and Subject</i>   |
|------------------------|---|---|
| <b>207/2016</b>        | Aus4  | <i>Weipa</i><br>Mooring buoys   |
| <b>1257/2016</b>       | Aus4  | Harbour works   |
| <b>179/2017</b>        | Aus4  | Light buoy off station  |
| <b>180/2017</b>        | Aus4  | Light beacon damaged  |
| <b>301/2016</b>        | Aus252 253 824                                | <i>Whitsunday Island</i><br>Wreck   |
| <b>261/2017</b>        | Aus251 252 253 254 255 268 269<br>824 825 826 | <i>Whitsunday Island to Abbot Point</i><br>Nav aids off station; nav aids destroyed; depths unreliable;<br>obstructions |
| <b>SOUTH AUSTRALIA</b> |   |   |
| <b>619/2016</b>        | Aus485 780                                    | <i>Fleurieu Peninsula</i><br>Hulk; prohibited area  |
| <b>1000/2016</b>       | Aus125  | <i>Gleneilg</i><br>Shoaling; dredging operations  |
| <b>720/2008</b>        | Aus137  | <i>Port Adelaide</i><br>Shoaling  |
| <b>853/2015</b>        | Aus130 138                                    | Light beacon damaged; light buoy established  |
| <b>1048/2016</b>       | Aus130 485 781                                | Obstruction westwards   |
| <b>1220/2016</b>       | Aus130 137                                    | Dredging operations   |
| <b>1221/2016</b>       | Aus130 138                                    | Light beacon destroyed  |
| <b>620/2016</b>        | Aus136  | <i>Port Pirie</i><br>Harbour works  |
| <b>322/2016</b>        | Aus122  | <i>Thevenard</i><br>Light beacon destroyed  |
| <b>483/2016</b>        | Aus135  | <i>Whyalla</i><br>Light beacon destroyed  |
| <b>TASMANIA</b>        |   |   |
| <b>1009/2016</b>       | Aus173 795 796                                | <i>Bruny Island</i><br>Scientific instruments southeastwards  |
| <b>166/2016</b>        | Aus487 798 800                                | <i>Cape Barren Island</i><br>Scientific instruments   |
| <b>855/2016</b>        | Aus164  | <i>Devonport</i><br>Obstruction   |
| <b>944/2016</b>        | Aus164  | Light beacon destroyed  |
| <b>1010/2016</b>       | Aus767 798                                    | <i>Eddystone Point</i><br>Scientific instruments southeastwards   |
| <b>1011/2016</b>       | Aus793  | <i>Flying Cloud Point</i><br>Scientific instruments westwards   |
| <b>576/2012</b>        | Aus171 796                                    | <i>Frederick Henry Bay</i><br>Scientific instruments  |
| <b>122/2017</b>        | Aus169  | <i>Georges Bay</i><br>Light buoy destroyed  |
| <b>587/2016</b>        | Aus172  | <i>Hobart</i><br>Light  |
| <b>945/2016</b>        | Aus172  | Harbour works   |
| <b>36/2017</b>         | Aus174  | <i>Huon River</i><br>Wreck  |

## 275(T)/2017 AUSTRALIA - TEMPORARY AND PRELIMINARY NOTICES

| <i>Notice</i>        | <i>Charts affected</i>    | <i>Locality and Subject</i>                                   |
|----------------------|---------------------------|---|
| <b>169/2016</b>      | Aus177                    | <i>Macquarie Harbour</i><br>Scientific instruments            |
| <b>1194/2016</b>     | Aus177                    | Harbour works   |
| <b>170/2016</b>      | Aus170 766 797            | <i>Maria Island</i><br>Scientific instruments                 |
| <b>1103/2014</b>     | Aus170 766 797            | <i>Mercury Passage</i><br>Obstructions                        |
| <b>372/2016</b>      | Aus171 174                | <i>North West Bay</i><br>Mooring area                         |
| <b>627/2016</b>      | Aus171 796                | <i>Pipe Clay Head to Pitt Water</i><br>Scientific instruments |
| <b>1055/2016</b>     | Aus173 174 794 795        | <i>Recherche Bay</i><br>Scientific instrument                 |
| <b>1056/2016</b>     | Aus171 172                | <i>River Derwent</i><br>Works                                 |
| <b>799/2016</b>      | Aus168                    | <i>River Tamar</i><br>Light beacon damaged                    |
| <b>1225/2016</b>     | Aus168                    | Scientific instruments  |
| <b>TIMOR SEA</b>     |                           |   |
| <b>223/2009</b>      | Aus312 4721 AX0312F 4721F | <i>Sahul Banks</i><br>Navaid; racon non operational           |
| <b>TORRES STRAIT</b> |                           |   |
| <b>358/2016</b>      | Aus377 840                | <i>Darnley Island</i><br>Wreck                                |
| <b>84/2016</b>       | Aus839                    | <i>Kai-Maituine Reef</i><br>Wreck                             |
| <b>410/2016</b>      | Aus841 842                | <i>Talbot Islands to Deliverance Island</i><br>Obstructions   |
| <b>VICTORIA</b>      |                           |   |
| <b>1271/2015</b>     | Aus349 AX00349S           | <i>Cape Reamur</i><br>Exclusion zone; light buoy              |
| <b>1222/2016</b>     | Aus182                    | <i>Lakes Entrance</i><br>Light beacon destroyed               |
| <b>80/2017</b>       | Aus141 349 787            | <i>Port Campbell</i><br>Seismic survey                        |
| <b>119/2017</b>      | Aus349 787                | Survey operations southwestwards                              |
| <b>234/2017</b>      | Aus349 787                | Underwater operations southwards                              |

## 275(T)/2017 AUSTRALIA - TEMPORARY AND PRELIMINARY NOTICES

| <i>Notice</i> | <i>Charts affected</i>                              | <i>Locality and Subject</i>              |
|---------------|---|--|
|               |   | <i>Port Phillip</i>                      |
| 705/2015      | Aus154  | Harbour works                            |
| 812/2015      | Aus157  | Shoaling                                 |
| 223/2016      | Aus143  | Light unlit                              |
| 621/2016      | Aus143  | Light beacon destroyed                   |
| 850/2016      | Aus154  | Harbour works                            |
| 905/2016      | Aus143 158  | Light buoy off station                   |
| 908/2016      | Aus157  | Light beacon unlit                       |
| 1002/2016     | Aus144 158  | Light beacon unlit                       |
| 1003/2016     | Aus154  | Light beacon altered                     |
| 1004/2016     | Aus157  | Light beacon unlit                       |
| 1165/2016     | Aus158  | Buoy off station                         |
| 1166/2016     | Aus153  | Barge                                    |
| 1192/2016     | Aus153  | Harbour works                            |
| 82/2017       | Aus143 157  | Light beacon destroyed                   |
| 120/2017      | Aus154  | Light beacon destroyed                   |
| 152/2017      | Aus154  | Harbour works                            |
| 235/2017      | Aus143 157  | Harbour works                            |
| 238/2017      | Aus153 157  | Light buoy off station; light buoy unlit |
| 274/2017      | Aus154  | Harbour works                            |
|               |   | <i>Port Welshpool</i>                    |
| 563/2015      | Aus182  | Shoaling                                 |
|               |   | <i>The Narrows</i>                       |
| 1053/2016     | Aus150  | Shoaling                                 |
|               |   | <i>Western Port</i>                      |
| 514/2008      | Aus150 151  | Shoaling northwards                      |
| 1223/2016     | Aus150 151  | Shoaling southeastwards                  |
|               |   | <b>WESTERN AUSTRALIA</b>                 |
|               |   | <i>Ashburton</i>                         |
| 24/2017       | Aus64 69 328 743                                    | Dredging operations                      |
| 184/2017      | Aus69   | Light buoy repositioned                  |
| 229/2017      | Aus69   | Light buoy repositioned                  |
|               |   | <i>Ashburton Road</i>                    |
| 88/2016       | Aus64 69 743  | Mooring buoys                            |
|               |   | <i>Barrow Island</i>                     |
| 1083/2016     | Aus65 66  | Scientific instrument                    |
| 1211/2016     | Aus328 329 743 744 4060 4070<br>4071 4708 4723 4725 | Seismic survey westwards                 |
|               |   | <i>Bluff Point</i>                       |
| 214/2016      | Aus332  | Fish aggregating devices                 |
|               |   | <i>Browse Island</i>                     |
| 150/2017      | Aus319 320 322 4721 4722                            | Drill rig northwestwards                 |
|               |   | <i>Bunbury</i>                           |
| 228/2013      | Aus115  | Shoaling                                 |
| 267/2017      | Aus115  | Dredging operations                      |
|               |   | <i>Busselton</i>                         |
| 1214/2016     | Aus116  | Seagrass wrack; dredging operations      |
|               |   | <i>Carnarvon</i>                         |
| 988/2016      | Aus73   | Obstruction                              |
|               |   | <i>Dampier</i>                           |
| 271/2013      | Aus57 741 742                                       | Obstruction                              |
| 216/2016      | Aus58 59 60   | Scientific instruments                   |
| 777/2016      | Aus57 58 60 741 742                                 | Shoaling                                 |

## 275(T)/2017 AUSTRALIA - TEMPORARY AND PRELIMINARY NOTICES

| <i>Notice</i>  | <i>Charts affected</i>   | <i>Locality and Subject</i>   |
|--|--|---|
| <b>851/2015</b>  | Aus57 327 741 742  | <i>Dampier Archipelago</i><br>Obstruction eastwards   |
| <b>1078/2015</b>   | Aus318 319 727 728 AX00318S<br>00319S 00319U                     | <i>East Holothuria Reef</i><br>Shoaling   |
| <b>989/2016</b>  | Aus72  | <i>Exmouth</i><br>Harbour works   |
| <b>939/2016</b>  | Aus52 53 54 739 740  | <i>Finucane Island to Weerde Island</i><br>Scientific instruments northwards  |
| <b>940/2016</b>  | Aus754 755   | <i>Five Fathom Bank</i><br>Scientific instrument  |
| <b>476/2016</b>  | Aus116 335 336 756 757   | <i>Flinders Bay</i><br>Shoaling   |
| <b>841/2016</b><br><b>990/2016</b>   | Aus112 113<br>Aus112 113   | <i>Fremantle</i><br>Light buoy established<br>Wreck   |
| <b>577/2016</b>  | Aus319   | <i>Goeree Shoal to Browse Island</i><br>Scientific instruments  |
| <b>1043/2016</b>   | Aus320 323 730 732   | <i>Hall Point to Raft Point</i><br>Shoaling   |
| <b>991/2016</b>  | Aus84  | <i>Jurien Bay</i><br>Dredging operations  |
| <b>843/2016</b>  | Aus116   | <i>Mandurah</i><br>Harbour works  |
| <b>151/2017</b>  | Aus754   | <i>Marmion Reef</i><br>Light buoy   |
| <b>522/2016</b><br><b>268/2017</b>   | Aus328<br>Aus328   | <i>Montebello Islands</i><br>Light buoy northwestwards<br>Subsea operations northwestwards  |
| <b>1089/2016</b>   | Aus328 329 744 4723 4725   | <i>Muiron Islands</i><br>Subsea works northwestwards  |
| <b>1162/2016</b><br><b>1215/2016</b>   | Aus69<br>Aus64 69  | <i>Onslow</i><br>Scientific instruments<br>Dredging operations  |
| <b>185/2017</b>  | Aus64 69 328 743 744   | <i>Onslow to Ashburton</i><br>Survey operations   |
| <b>478/2016</b>  | Aus754   | <i>Perth</i><br>Scientific instruments westwards  |
| <b>1123/2015</b><br><b>1393/2015</b><br><b>1091/2016</b><br><b>117/2017</b><br><b>186/2017</b> | Aus54<br>Aus53 739 740<br>Aus52 53 54<br>Aus52 53<br>Aus52 53 54 | <i>Port Hedland</i><br>Light beacons; tug mooring<br>Scientific instrument<br>Dredging operations<br>Drilling operations<br>Dredging operations |
| <b>1214/2015</b><br><b>682/2016</b><br><b>1092/2016</b>  | Aus55 57 326 327 740 741<br>Aus55 740<br>Aus55 326 740           | <i>Port Walcott</i><br>Drilling operations<br>Light buoy unreliable<br>Tide gauge   |

## 275(T)/2017 AUSTRALIA - TEMPORARY AND PRELIMINARY NOTICES

| <i>Notice</i>    | <i>Charts affected</i>   | <i>Locality and Subject</i>  |
|------------------|--|--|
| <b>480/2016</b>  | Aus327   | <i>Rankin Bank</i><br>Scientific instrument                                    |
| <b>731/2016</b>  | Aus327 328   | Scientific instruments southwestwards  |
| <b>1189/2016</b> | Aus327 328 4723  | Survey operations southwestwards   |
| <b>77/2017</b>   | Aus327   | Subsea operations northeastwards   |
| <b>269/2017</b>  | Aus327 4723  | Drill rig  |
| <b>270/2017</b>  | Aus327   | Mooring buoys  |
| <b>846/2016</b>  | Aus112   | <i>Rottnest Island</i><br>Light buoy off station                               |
| <b>1129/2016</b> | Aus116   | <i>Safety Bay</i><br>Dredging operations                                       |
| <b>582/2016</b>  | Aus112 117   | <i>Success Bank</i><br>Obstructions  |
| <b>1095/2016</b> | Aus64 328 743 744 4723 4725  | <i>Thevenard Island</i><br>Well plug and abandonment works                     |
| <b>118/2017</b>  | Aus32  | <i>Wyndham Wharf</i><br>Light buoy off station                                 |
| <b>189/2017</b>  | Aus32  | Light buoy off station   |
| <b>271/2017</b>  | Aus40 732 733  | <i>Yampi Sound</i><br>Light beacon unlit                                       |
| <b>1038/2014</b> | Aus4708 4714 4723 AX04708U<br>04714U 04723U  | <b>INDIAN OCEAN</b><br><i>Mid-Indian Ocean Basin</i><br>Light buoy off station |
| <b>454/2015</b>  | Aus4070 4071   | <i>Sumatera</i><br>Scientific instruments westwards                            |
| <b>424/2015</b>  | Aus4604 4622 AX04604U  | <b>PACIFIC OCEAN</b><br>Scientific instruments                                 |
| <b>78/2016</b>   | Aus399 683 4622  | <b>PAPUA NEW GUINEA</b><br><i>Bougainville Island</i><br>Lights unlit          |
| <b>262/2017</b>  | Aus521 522 4603 4604 4620 4621<br>4622   | <i>Cape Ward Hunt</i><br>Light unlit   |
| <b>979/2016</b>  | Aus523 642 643   | <i>Huon Gulf</i><br>Survey operations  |
| <b>164/2013</b>  | Aus628   | <i>Nuakata Passage</i><br>Light beacon destroyed                               |
| <b>226/2017</b>  | Aus505 621   | <i>Padana Nahua Passage to Bootless Inlet</i><br>Shoaling                      |
| <b>143/2016</b>  | Aus621 622   | <i>Port Moresby</i><br>Wrecks  |
| <b>144/2016</b>  | Aus622   | Harbour works; horizontal datum error  |
| <b>1039/2016</b> | Aus621 622   | Dredging operations; harbour works   |
| <b>73/2017</b>   | Aus379 386 387 392 393 396 397<br>398 399 507 508 509 512 513 514<br>515 516 517 518 519 520 521 522<br>523 539 543 545 546 547 548 554<br>628 631 635 637 642 643 644 653 | <i>Solomon Sea</i><br>Seismic survey   |

**275(T)/2017 AUSTRALIA - TEMPORARY AND PRELIMINARY NOTICES**

665 666 668 669 670 671 672 673  
674 677 678 679 680 683 684 4620  
4621 4622

| <i>Notice</i>   | <i>Charts affected</i> | <i>Locality and Subject</i>              |
|-----------------|------------------------|--|
| <b>263/2017</b> | Aus396 547 674         | <i>Stettin Bay</i><br>Light beacon unlit |
| <b>264/2017</b> | Aus379 505 621         | <i>Vabukori</i><br>Light unlit           |

II

**HYDROGRAPHIC REPORTS**

NIL

### III

#### **NAVIGATION WARNINGS**

The Australian Hydrographic Service will no longer compile Section III of the Australian Notices to Mariners. For the most up to date navigation warnings please refer to:

AMSA Navigation Warnings

<http://amsa.gov.au/search-and-rescue/distress-and-safety-comms/msi/msi-email/index.asp>

New Zealand Notices to Mariners (Navarea XIV warnings)

<http://www.linz.govt.nz/sea/maritime-safety/notices-mariners>

*To accompany Australian Notice to Mariners 250/2017*

PILOT

Inbound vessels which require a pilot must not enter Port limits without a pilot on board.

*Note for chart Aus 163*

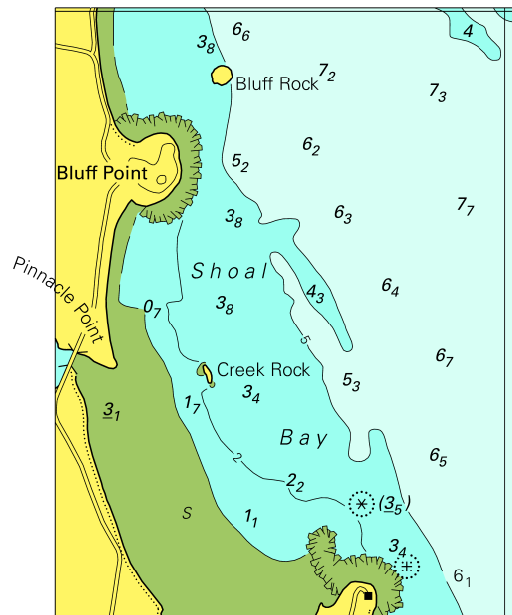
*To accompany Australian Notice to Mariners 250/2017*

PILOT

Vessels requiring a pilot to enter the following ports should not proceed south of latitude: Port Dalrymple 41° 00' S, Devonport 41° 07' S. At Burnie inbound vessels which require a pilot must not enter Port limits without a pilot on board.

*Note for chart Aus 799*

To accompany Australian Notice to Mariners 244/2017

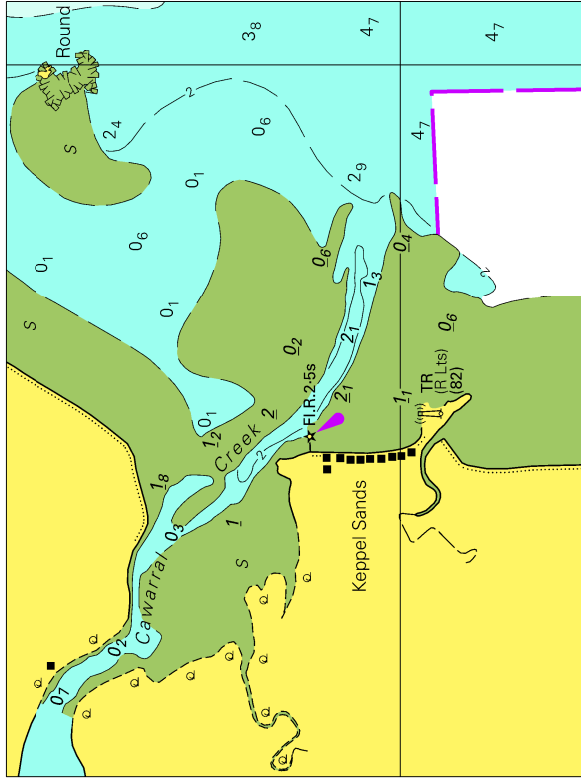


© Commonwealth of Australia 2017

Block A for Chart Aus 247

(61.0 x 80.4mm)

To accompany Australian Notice to Mariners 244/2017

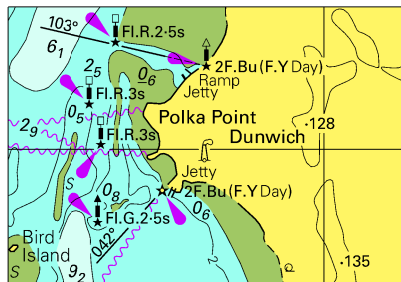


© Commonwealth of Australia 2017

Block B for Chart Aus 247

(102.5 x 76.3mm)

To accompany Australian Notice to Mariners 245/2017

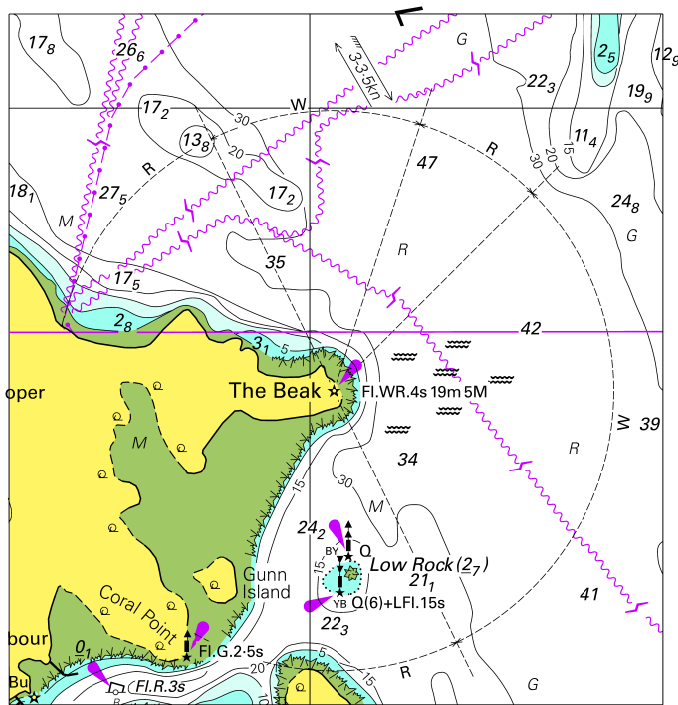


© Commonwealth of Australia 2017

Block for Chart Aus 236 (52.8 x 36.5mm)

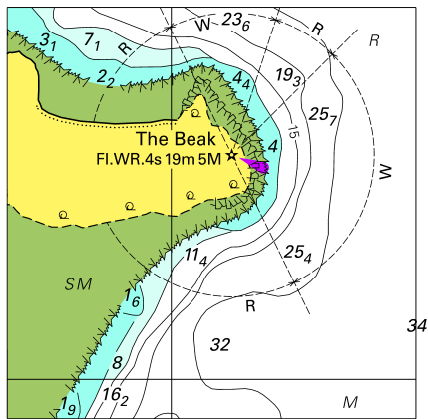


To accompany Australian Notice to Mariners 247/2017



© Commonwealth of Australia 2017  
Block for Chart Aus 253 (86.5 x 91.2mm)

To accompany Australian Notice to Mariners 247/2017



© Commonwealth of Australia 2017  
Block for Chart Aus 269 (53.9 x 54.4mm)