



10 March 2017

Edition 5

Australian Notices to Mariners are the authority for correcting Australian Charts and Publications

AUSTRALIAN NOTICES TO MARINERS

Notices 153 - 191



Published fortnightly by the Australian Hydrographic Service

Commodore B.K. BRACE RAN
Hydrographer of Australia

SECTIONS.

- I. **Australian Notices to Mariners, including blocks and notes.**
- II. **Hydrographic Reports.**
- III. **Navigational Warnings.**

SUPPLEMENTS.

- I. **Tracings**
- II. **Cumulative List of Australian Notices to Mariners.**
- III. **Cumulative List of Temporary and Preliminary Australian Notices to Mariners.**
- IV. **Temporary and Preliminary Notices in force.**
- V. **Amendments to Admiralty List of Lights and Fog Signals (Vol K), Radio Signals (NP 281(2), 282, 283(2), 285, 286(4)) and Sailing Directions (NP 9, 13, 14, 15, 33, 34, 35, 36, 39, 44, 51, 60, 61, 62, 100, 136).**

© Commonwealth of Australia 2017

This work is copyright. Apart from any use permitted under the Copyright Act 1968, no part may be reproduced by any process, adapted, communicated or commercially exploited without prior written permission from The Commonwealth represented by the Australian Hydrographic Service.

IMPORTANT NOTICE

This edition of Notices to Mariners includes all significant information affecting AHS products which the AHS has become aware of since the last edition. All reasonable efforts have been made to ensure the accuracy and completeness of the information, including third party information, on which these updates are based. The AHS regards third parties from which it receives information as reliable, however the AHS cannot verify all such information and errors may therefore exist. The AHS does not accept liability for errors in third party information.

GENERAL INSTRUCTIONS

The substance of these notices should be inserted on the charts affected.

Bearings are referred to the true compass and are reckoned clockwise from North; those relating to lights are given as seen by an observer from seaward.

Positions quoted in notices relate to WGS84 which is the horizontal datum for all charts produced by the Australian Hydrographic Service.

The range quoted for a light is its nominal range.

Depths are with reference to the chart datum of each chart. Heights are above mean high water springs or mean higher high water, as appropriate.

The capital letter (P) or (T) after the number of any notice denotes a preliminary or temporary notice respectively, which are contained separately at the end of the permanent notices.

A star (*) adjacent to the number of a notice indicates that the notice is based on original information.

REPORTING OF DANGERS

Mariners are particularly requested to notify the AUSTRALIAN HYDROGRAPHIC SERVICE, Locked Bag 8801 Wollongong, NSW 2500 (Fax 02-4223 6599, e-mail datacentre@hydro.gov.au or, alternatively by filling in and submitting the [Hydrographic Notes](#) forms located on the web site – www.hydro.gov.au), immediately on the discovery of new dangers or suspected dangers to navigation. For changes or defects in aids to navigation notify AusSAR (Fax 02-6230 6868 or email rccaus@amsa.gov.au).

AUTHORISED USE

Copies of Australian notices are available free of charge from the Australian Hydrographic Service (AHS) website (www.hydro.gov.au) and through the eNotices (email) service (www.hydro.gov.au/enotices/enotices.htm).

Individual Notices may be copied for the purpose of inserting Notice substance on official charts and publications. Paper copies may be printed by chart agents and distributed to customers on a cost recovery basis. Participating chart agents are listed on the AHS website as providing a 'Paper Notices to Mariners' service (www.hydro.gov.au/webapps/jsp/agents/agents-list.jsp). Copies of the notices may not be sold for profit without prior written agreement.

NUMERICAL INDEX OF NOTICES TO MARINERS

Edition No 5

Notices	Aus Chart, INT Chart, ENC Cell, AHP, BA Pubs
153	Aus 24, 25, 26, 27, 28
154	Aus 200, 201, 202
155	Aus 256
156	Aus 270
157	Aus 268
158	Aus 241
159	Aus 833
160	Aus 6
161	Aus 6
162	Aus 299
163	Aus 57, 58
164	Aus 55, 326, 327, 740, 741
165	Aus 55
166	Aus 776
167	Aus 135, 136
168	Aus 805, 806, 4643, 4644, INT 643, 644
169	Aus 153, 157
170	Aus 157
171	Aus 155
172	Aus 150, 151, 801
173	Aus 151, 152
174	Aus 170, 175
175(T)	Aus 200, 201
176(T)	Aus 238
177(T)	Aus 236
178(T)	Aus 252, 253, 269, 824, 825
179(T)	Aus 4
180(T)	Aus 4
181(T)	Aus 24
182(T)	Aus 25
183(P)	Aus 17, 718
184(T)	Aus 69
185(T)	Aus 64, 69, 328, 743, 744
186(T)	Aus 52, 53, 54
187(T)	Aus 55, 740
188(T)	Aus 327
189(T)	Aus 32
190(T)	Aus 182
191(T)	Aus 790

NUMERICAL INDEX OF CHARTS AFFECTED

Edition No 5

Aus Chart	Notices
Aus 4	179(T), 180(T)
Aus 6	160, 161
Aus 17	183(P)
Aus 24	153, 181(T)
Aus 25	153, 182(T)
Aus 26	153
Aus 27	153
Aus 28	153
Aus 32	189(T)
Aus 52	186(T)
Aus 53	186(T)
Aus 54	186(T)
Aus 55	164, 165, 187(T)
Aus 57	163
Aus 58	163
Aus 64	185(T)
Aus 69	184(T), 185(T)
Aus 135	167
Aus 136	167
Aus 150	172
Aus 151	172, 173
Aus 152	173
Aus 153	169
Aus 155	171
Aus 157	169, 170
Aus 170	174
Aus 175	174
Aus 182	190(T)
Aus 200	154, 175(T)
Aus 201	154, 175(T)
Aus 202	154
Aus 236	177(T)
Aus 238	176(T)
Aus 241	158
Aus 252	178(T)
Aus 253	178(T)
Aus 256	155
Aus 268	157
Aus 269	178(T)
Aus 270	156
Aus 299	162
Aus 326	164
Aus 327	164, 188(T)
Aus 328	185(T)
Aus 718	183(P)
Aus 740	164, 187(T)
Aus 741	164
Aus 743	185(T)
Aus 744	185(T)
Aus 776	166
Aus 790	191(T)
Aus 801	172
Aus 805	168
Aus 806	168

Aus Chart	Notices
Aus 824	178(T)
Aus 825	178(T)
Aus 833	159
Aus 4643	168
Aus 4644	168

INT Chart	Notices
INT 643	168
INT 644	168

153 AUSTRALIA - Products - New Charts, New Editions, Withdrawn Charts

UKHO , Australian Hydrographic Service

New Charts

<i>Chart</i>	<i>Title and Geographical limits</i>	<i>Scale</i>	<i>Publication Date</i>	<i>Remarks</i>
NIL				

New Electronic Navigation Chart (Aus ENC)

<i>Cell Name</i>	<i>Title</i>	<i>Publication Date</i>	<i>Remarks</i>
NIL			

New Editions and Withdrawn Charts

<i>Chart</i>	<i>Title</i>	<i>Scale</i>	<i>Publication Date</i>	<i>Remarks</i>
Aus 24 Edition 3	Australia - North Coast - Northern Territory - Port Darwin - Wickham Point	1:10 000	10 March 2017	New edition incorporating new routing measures. Chart Aus 24 Edition 2 dated 8 May 2015 is now superseded and must be withdrawn from use.
Aus 25 Edition 2	Australia - North Coast - Northern Territory - Port Darwin (Northern Sheet)	1:37 500	10 March 2017	New edition incorporating new routing measures. Chart Aus 25 Edition 1 dated 29 July 2016 is now superseded and must be withdrawn from use.
Aus 26 Edition 2	Australia - North Coast - Northern Territory - Port Darwin (Southern Sheet)	1:37 500	10 March 2017	New edition incorporating new routing measures. Chart Aus 26 Edition 1 dated 29 July 2016 is now superseded and must be withdrawn from use.
Aus 27 Edition 3	Australia - North Coast - Northern Territory - Port Darwin - Middle Arm including Channel Island	1:10 000	10 March 2017	New edition incorporating new routing measures. Chart Aus 27 Edition 2 dated 8 May 2015 is now superseded and must be withdrawn from use.
Aus 28 Edition 3	Australia - North Coast - Northern Territory - Port Darwin - East Arm	1:12 500	10 March 2017	New edition incorporating new routing measures. Chart Aus 28 Edition 2 dated 8 May 2015 is now superseded and must be withdrawn from use.

Admiralty publication

<i>NP No</i>	<i>Title</i>	<i>Date</i>	<i>Remarks</i>
NP 61 e-NP 61	Admiralty Sailing Directions. Pacific Islands Pilot Volume 2 (Thirteenth Edition) 2047.	9/3/2017	This edition supersedes NP61 (Twelfth Edition 2011) which is cancelled.

Chart permanently withdrawn

Charts listed above as withdrawn no longer meet chart carriage requirements and should be marked as "superseded" and replaced with the new chart/ new edition listed prior to passage through the area covered by the new chart.

When placing orders with a chart agent between notice of forthcoming edition and its publication, mariners should advise whether their order pertains to the current edition or the new edition.

For further details refer to the AHS website at www.hydro.gov.au for new edition and new chart stock arrival information.

154* AUSTRALIA - NEW SOUTH WALES - Port Jackson - Rushcutters Bay to North Harbour - Wrecks

Port Authority of New South Wales

Aus 200 [1230/2016]

Insert	depth, 10 ₉ m, enclosed by danger circle with legend, <i>Wk</i>	33° 48'.770 S	151° 17'.007 E
--------	--	---------------	----------------

Replace	depth, 12 ₈ m, with depth, 12 ₄ m	33° 48'.66 S	151° 16'.59 E
---------	---	--------------	---------------

Aus 201 [89/2017]

Insert	depth, 10 ₂ m, enclosed by danger circle with legend, <i>Wk</i>	33° 48'.305 S	151° 16'.468 E
--------	--	---------------	----------------

	depth, 5 ₃ m, enclosed by danger circle with legend, <i>Wk</i>	33° 48'.263 S	151° 16'.964 E
--	---	---------------	----------------

	depth, 10 ₉ m, enclosed by danger circle with legend, <i>Wk</i>	33° 48'.770 S	151° 17'.007 E
--	--	---------------	----------------

Replace	depth, 12 ₈ m, with depth, 12 ₄ m	33° 48'.66 S	151° 16'.59 E
---------	---	--------------	---------------

Aus 202 [89/2017]

Insert	depth, 4 ₂ m, enclosed by danger circle with legend, <i>Wk</i>	33° 52'.333 S	151° 13'.912 E
--------	---	---------------	----------------

	depth, 5 ₁ m, enclosed by danger circle with legend, <i>Wk</i>	33° 52'.051 S	151° 13'.756 E
--	---	---------------	----------------

	depth, 6 ₉ m, enclosed by danger circle with legend, <i>Wk</i>	33° 52'.060 S	151° 13'.879 E
--	---	---------------	----------------

155* AUSTRALIA - QUEENSLAND - Cape Cleveland - Light buoy

Maritime Safety Queensland Notice 1/2017

Aus 256 [1236/2016]

Move	light buoy	19° 09'.6 S	147° 03'.6 E
	to	19° 09'.54 S	147° 03'.52 E

156 AUSTRALIA - QUEENSLAND - Cooktown - Depths; infrastructure; moorings

Maritime Safety Queensland

Aus 270 (plan, Cooktown) [131/2017]

Insert	accompanying block	15° 27'.6 S	145° 15'.1 E
--------	--------------------	-------------	--------------

157 AUSTRALIA - QUEENSLAND - Gloucester Passage - Nav aids

Maritime Safety Queensland Notice 454/2016, M Templeton

*On certain copies only***Aus 268 [1234/2016]**

Insert	starboard lateral conical light buoy, <i>Fl.G.2·5s No5</i> , without topmark	20° 03'.770 S	148° 25'.993 E
--------	--	---------------	----------------

Substitute	starboard lateral conical light buoy, <i>Fl.G.2·5s</i> , without topmark for light beacon	20° 03'.8 S	148° 26'.0 E
------------	---	-------------	--------------

Delete	light beacon	20° 03'.74 S	148° 25'.99 E
--------	--------------	--------------	---------------

158* AUSTRALIA - QUEENSLAND - Great Sandy Strait - Nav aids
Maritime Safety Queensland

Aus 241 [1235/2016]

Insert	starboard lateral conical buoy, without topmark	25° 25'.76 S	152° 55'.14 E
	port lateral cylindrical light buoy, <i>Fl.R.3s</i> , without topmark	25° 27'.03 S	152° 53'.80 E
	port lateral cylindrical light buoy, <i>Fl.R.3s</i> , without topmark	25° 26'.94 S	152° 53'.58 E
	port lateral cylindrical light buoy, <i>Fl.R.3s</i> , without topmark	25° 26'.93 S	152° 53'.29 E
	starboard lateral conical light buoy, <i>Fl.G.3s</i> , without topmark	25° 27'.03 S	152° 53'.01 E
	starboard lateral conical light buoy, <i>Q.G</i> , without topmark	25° 17'.09 S	152° 59'.46 E
Replace	light beacon with special cylindrical light buoy, <i>Fl.Y.2-5s</i> , with topmark	25° 25'.85 S	152° 55'.17 E
Move	light beacon	25° 18'.76 S	153° 00'.95 E
	to	25° 18'.81 S	153° 00'.97 E
Delete	light beacon	25° 23'.3 S	153° 01'.6 E
	light buoy	25° 27'.1 S	152° 53'.4 E
	light buoy	25° 27'.3 S	152° 53'.7 E
	light buoy	25° 17'.4 S	153° 00'.9 E

159 AUSTRALIA - QUEENSLAND - Howick Group - Depths
HMAS *Shepparton*, S Maxwell

Aus 833 [537/2016]

Insert	depth, 9 ₄ m, and extend contour E to enclose	14° 27'.72 S	144° 46'.77 E
Delete	depth, 12 ₅ m	14° 27'.5 S	144° 46'.4 E

160 AUSTRALIA - QUEENSLAND - Karumba - Norman River - Light buoy
Maritime Safety Queensland

Aus 6 [132/2017]

Replace	light buoy with special cylindrical light buoy, <i>Fl.Y.4s</i> , with topmark	17° 28'.75 S	140° 50'.19 E
---------	---	--------------	---------------

Aus 6 (plan, Karumba) [132/2017]

Replace	light buoy with special cylindrical light buoy, <i>Fl.Y.4s No27</i> , with topmark	17° 28'.75 S	140° 50'.19 E
---------	--	--------------	---------------

161 AUSTRALIA - QUEENSLAND - Karumba - Light beacons
Maritime Safety Queensland Notice 4/2017

Aus 6 [160/2017]

Insert	accompanying block	17° 27'.0 S	140° 44'.5 E
Amend	legend to 264-5°	17° 26'.6 S	140° 46'.6 E

162 AUSTRALIA - QUEENSLAND - Thursday Island - Port Kennedy - Moorings
Maritime Safety Queensland

Aus 299 [1173/2016]

Insert	accompanying block	10° 35'.2 S	142° 13'.2 E
--------	--------------------	-------------	--------------

163 AUSTRALIA - WESTERN AUSTRALIA - Dampier - East Intercourse Island - Radome; tower; lights; radar station

Pilbara Ports Authority

Aus 57 [52/2017]

Replace light with tower and legend *TR (R Lt)* 20° 39'.29 S 116° 40'.79 E

Delete radar station 20° 39'.3 S 116° 40'.8 E
 legend, Tr (45) 20° 39'.4 S 116° 40'.6 E

Aus 58 [138/2017]

Replace light with radome and legend, *RADOME (R Lt)* 20° 39'.22 S 116° 41'.00 E
 light with tower and legend *TR (R Lt)* 20° 39'.29 S 116° 40'.79 E

Delete radar station 20° 39'.29 S 116° 40'.79 E
 legend, Port Control Tower (45) 20° 39'.37 S 116° 40'.96 E

164 AUSTRALIA - WESTERN AUSTRALIA - Port Walcott - Pilot boarding place

Rio Tinto

Aus 55 [1165/2014]

Move pilot boarding place 20° 32'.1 S 117° 17'.6 E
 to 20° 32'.4 S 117° 15'.0 E

Aus 326 [57/2017]

Move pilot boarding place 20° 32'.1 S 117° 17'.6 E
 to 20° 32'.4 S 117° 15'.0 E

Delete depth, *14₂m* 20° 32'.7 S 117° 15'.0 E

Aus 327 [58/2017]

Move pilot boarding place 20° 32'.1 S 117° 17'.6 E
 to 20° 32'.4 S 117° 15'.0 E

Delete depth, *14₂m* 20° 32'.7 S 117° 15'.0 E

Aus 740 [59/2017]

Move pilot boarding place 20° 32'.1 S 117° 17'.6 E
 to 20° 32'.4 S 117° 15'.0 E

Aus 741 [1245/2016]

Move pilot boarding place 20° 32'.1 S 117° 17'.6 E
 to 20° 32'.4 S 117° 15'.0 E

165 AUSTRALIA - WESTERN AUSTRALIA - Port Walcott - Bass Pass - Contour

Precision Hydrographic Services

Aus 55 [164/2017]

Insert contour, between 20° 28'.18 S 117° 24'.98 E
 20° 28'.06 S 117° 25'.02 E
 20° 28'.06 S 117° 25'.08 E
 20° 28'.19 S 117° 25'.14 E

Delete contour, between 20° 28'.2 S 117° 25'.0 E
 20° 28'.2 S 117° 25'.1 E

166 AUSTRALIA - SOUTH AUSTRALIA - Hardwicke Bay - Light beacon

Department of Planning, Transport and Infrastructure SA

Aus 776 [1149/2016]

Insert light beacon, *Fl.G.3s*, with starboard lateral topmark 34° 54'.03 S 137° 26'.88 E

167 AUSTRALIA - SOUTH AUSTRALIA - Whyalla - Nav aids

Former Notice - 1099(T)/2014 is cancelled
Arrium Mining

Aus 135 (plan, Whyalla) [621/2015]

Insert	light, <i>F.R.25m (F Day)</i>	33° 00'.752 S	137° 35'.330 E
Amend	light to <i>F.R.56m (vert) (2F Day)</i> legend to 306.5°	33° 00'.62 S 33° 02'.50 S	137° 35'.11 E 137° 38'.14 E
Move	light beacon to light beacon to light beacon to	33° 01'.60 S 33° 01'.586 S 33° 01'.66 S 33° 01'.645 S 33° 01'.26 S 33° 01'.248 S	137° 36'.76 E 137° 36'.733 E 137° 36'.71 E 137° 36'.681 E 137° 36'.21 E 137° 36'.191 E
Delete	light	33° 00'.77 S	137° 35'.35 E
Aus 136 [393/2016]			
Amend	light to <i>F.R (vert)</i> legend to 306.5°	33° 00'.6 S 33° 02'.2 S	137° 35'.1 E 137° 37'.8 E

168 AUSTRALIA - VICTORIA - Gabo Island - Racon

Australian Maritime Safety Authority Preliminary ATH 2/2017

Aus 805 [1298/2015]

Delete racon and legend Racon (G) 37° 34'.0 S 149° 55'.0 E

Aus 806 [3/2017]

Delete racon and legend Racon (G) 37° 34'.0 S 149° 55'.0 E

Aus 4643 (INT 643) [1231/2016]

Delete racon and legend Racon (G) 37° 34'.0 S 149° 55'.0 E

Aus 4644 (INT 644) [1119/2016]

Delete racon and legend Racon (G) 37° 34'.0 S 149° 55'.0 E

169 AUSTRALIA - VICTORIA - Port Phillip - Corio Bay - Light buoy

Parks Victoria Notice 63/2017

Aus 153 [652/2016]

Move light buoy 38° 06'.50 S 144° 24'.19 E
to 38° 06'.502 S 144° 24'.000 E

Aus 157 [1252/2016]

Move light buoy 38° 06'.50 S 144° 24'.19 E
to 38° 06'.502 S 144° 24'.000 E

170 AUSTRALIA - VICTORIA - Port Phillip - Clifton Springs - Infrastructure; light beacon

Parks Victoria

Aus 157 [169/2017]

Insert continuous line, between 38° 09'.266 S 144° 33'.110 E
38° 09'.250 S 144° 33'.107 E

Aus 157 (plan, Clifton Springs) [169/2017]

Insert continuous line, between 38° 09'.266 S 144° 33'.110 E
38° 09'.250 S 144° 33'.107 E
port lateral light beacon, *F.R.*, with topmark 38° 09'.280 S 144° 33'.198 E

Delete depth, 0₂m 38° 09'.26 S 144° 33'.11 E

171 AUSTRALIA - VICTORIA - Port Phillip - Point Cook - Nav aids

Parks Victoria

Aus 155 [102/2017]

Insert	special beacon, without topmark	37° 55'.789 S	144° 47'.650 E
Move	light	37° 55'.93 S	144° 45'.03 E
	to	37° 55'.920 S	144° 44'.968 E
Delete	depth, 3 ₂ m	37° 55'.79 S	144° 47'.61 E
	topmark	37° 55'.70 S	144° 47'.72 E
	topmark	37° 55'.31 S	144° 48'.04 E

172 AUSTRALIA - VICTORIA - Western Port - West Head - Light

Department of Defence

Aus 150 [11/2017]

Insert	light, Q.R (occas)	38° 29'.07 S	145° 01'.84 E
--------	--------------------	--------------	---------------

Aus 151 [1253/2016]

Insert	light, Q.R 50m 5M (occas)	38° 29'.068 S	145° 01'.838 E
--------	---------------------------	---------------	----------------

Aus 801 [104/2017]

Insert	light, Q.R (occas)	38° 29'.07 S	145° 01'.84 E
--------	--------------------	--------------	---------------

173 AUSTRALIA - VICTORIA - Western Port - Long Island Point - Beacon

LINX Cargo Care Group

Aus 151 [172/2017]

Delete	beacon	38° 18'.47 S	145° 13'.46 E
--------	--------	--------------	---------------

Aus 152 (plan, Hastings Bight) [852/2014]

Delete	beacon	38° 18'.47 S	145° 13'.46 E
--------	--------	--------------	---------------

174 AUSTRALIA - TASMANIA - Spring Bay - Paddys Point - Lights

Marine and Safety Tasmania Notice M29/2017

Aus 170 [105/2017]

Delete	light	42° 32'.20 S	147° 55'.70 E
	light	42° 32'.25 S	147° 55'.70 E
	dashed and continuous line with legend 359° emanating from light	42° 33'.20 S	147° 55'.70 E

Aus 175 [201/2016]

Delete	light	42° 32'.20 S	147° 55'.70 E
	light	42° 32'.25 S	147° 55'.70 E
	dashed and continuous line with legend 359° emanating from light	42° 33'.20 S	147° 55'.70 E

175(T)/2017 AUSTRALIA - NEW SOUTH WALES - Port Jackson - Western Channel - Scientific instrument
Port Authority of New South Wales Notice 7/2017

A special light buoy, *Fl.Y.5s*, exists in position 33° 50'.48 S 151° 15'.87 E.

Chart temporarily affected - Aus 200 - Aus 201

176(T)/2017 AUSTRALIA - QUEENSLAND - Brisbane River - South Brisbane Reach - Scientific instrument
Maritime Safety Queensland

A special light buoy, *Q.Y*, exists in position 27° 28'.46 S 153° 01'.27 E.

Chart temporarily affected - Aus 238

177(T)/2017 AUSTRALIA - QUEENSLAND - Moreton Bay - Raby Bay - Dredging operations
Maritime Safety Queensland Notice 54(T)/2017

The dredge *Ken Harvey* and support vessels *Turtle*, *Sealion* and *Frank Wilson* are conducting dredging operations in the vicinity of position 27° 30'.7 S 153° 16'.9 E.

The dredge will display appropriate lights and shapes and will monitor VHF Ch 13.

Mariners are advised to navigate with caution in the area.

Chart temporarily affected - Aus 236

178(T)/2017 AUSTRALIA - QUEENSLAND - Shute Harbour - The Beak - Light relit
Former Notice - 115(T)/2017 is cancelled
Maritime Safety Queensland

Cancel this notice on receipt.

Chart formerly affected - Aus 252 - Aus 253 - Aus 269 - Aus 824 - Aus 825

179(T)/2017 AUSTRALIA - QUEENSLAND - Weipa - Embley River - Light buoy off station
Maritime Safety Queensland Notice 42(T)/2017

The special light buoy, *Fl.Y.2-5s A1* (12° 41'.72 S 141° 52'.76 E), is off station and in position 12° 41'.7 S 141° 52'.8 E.

Chart temporarily affected - Aus 4

180(T)/2017 AUSTRALIA - QUEENSLAND - Weipa - Light beacon damaged
Maritime Safety Queensland Notice 55(T)/2017

The port lateral light beacon, *Fl.R.4s CN4* (12° 40'.18 S 141° 50'.42 E), is damaged and unlit.

Chart temporarily affected - Aus 4

181(T)/2017 AUSTRALIA - NORTHERN TERRITORY - Darwin - Cullen Bay - Nav aids unlit
Department of Infrastructure, Planning and Logistics NT Notice 13(T)/2017

The following nav aids are unlit;

<i>Position</i>	<i>Remarks</i>
12° 27'.05 S 130° 49'.18 E	<i>F.Bu</i>
12° 27'.05 S 130° 49'.15 E	<i>F.Bu</i>
12° 27'.18 S 130° 49'.16 E	<i>Iso.Bu.2s & Iso.Bu.8s</i>
12° 27'.12 S 130° 49'.12 E	<i>Q.R</i>

Chart temporarily affected - Aus 24

182(T)/2017 AUSTRALIA - NORTHERN TERRITORY - Darwin - East Point - Light buoy unlit
Department of Infrastructure, Planning and Logistics NT Notice 12(T)/2017

The special light buoy, *Fl. Y. 4s* (12° 24'.07 S 130° 49'.33 E), is unlit.

Chart temporarily affected - Aus 25

183(P)/2017 AUSTRALIA - NORTHERN TERRITORY - Maningrida to Hawkesbury Point - Shoaling
HMAS *Melville*

Shoaler depths than those charted may exist in an area between positions 12° 02'.7 S 134° 13'.0 E and 11° 48'.5 S 134° 08'.5 E.

Charts will updated in due course.

Chart which will be affected - Aus 17 - Aus 718

184(T)/2017 AUSTRALIA - WESTERN AUSTRALIA - Ashburton - Light buoy repositioned
Pilbara Ports Authority Notice A2(T)/2017

The special light buoy, *Fl. Y. 4s* (21° 40'.67 S 115° 00'.46 E), has been temporarily repositioned to 21° 40'.72 S 115° 00'.55 E.

Chart temporarily affected - Aus 69

185(T)/2017 AUSTRALIA - WESTERN AUSTRALIA - Onslow to Ashburton - Survey operations
Former Notice - 1263(T)/2016 is cancelled
Pilbara Ports Authority Notice A3(T)/2017, Department of Transport WA Notice 32/2017

Vessel *Go Puriya* is conducting survey operations in the Port of Ashburton and Port of Onslow.

The vessel will maintain a listening watch on VHF Ch 14.

Mariners are advised to navigate with caution in the area.

Chart temporarily affected - Aus 64 - Aus 69 - Aus 328 - Aus 743 - Aus 744

186(T)/2017 AUSTRALIA - WESTERN AUSTRALIA - Port Hedland - Anderson Point Wharf - Dredging operations
Pilbara Ports Authority Notice PH7(T)/2017

The dredge *Eastern Aurora* is conducting dredging operations in the vicinity of position 20° 19'.8 S 118° 34'.8 E.

A floating pipeline marked by lights exists in the area.

Mariners are advised to navigate with caution in the area.

Chart temporarily affected - Aus 52 - Aus 53 - Aus 54

187(T)/2017 AUSTRALIA - WESTERN AUSTRALIA - Port Walcott - Tessa Shoals - Light buoy off station
Department of Transport WA

The south cardinal light buoy, *Q(6)+LFl. 15s No63* (20° 30'.53 S 117° 21'.57 E), is off station.

Chart temporarily affected - Aus 55 - Aus 740

188(T)/2017 AUSTRALIA - WESTERN AUSTRALIA - Rankin Bank - Mooring buoys
Australian Maritime Safety Authority Auscoast 20/2017, Woodside Energy Ltd

12 yellow mooring buoys, *Fl. 3s*, exist within 1NM radius of 19° 49'.46 S 115° 39'.29 E.

Chart temporarily affected - Aus 327

189(T)/2017 AUSTRALIA - WESTERN AUSTRALIA - Wyndham Wharf - Light buoy off station
Department of Transport WA Notice 30/2017

The light buoy, *Fl.G.5s No11 Raft* (15° 23'.33 S 128° 06'.44 E), is off station.

Chart temporarily affected - Aus 32

190(T)/2017 AUSTRALIA - VICTORIA - Lakes Entrance - Dredging operations completed
Former Notice - 1001(T)/2016 is cancelled
Victorian Regional Channels Authority Notice 1(T)/2017

Cancel this notice on receipt.

Chart formerly affected - Aus 182

191(T)/2017 AUSTRALIA - TASMANIA - Three Hummock Island - Neils Rock - Scientific instrument recovered
Former Notice - 84(T)/2017 is cancelled
Marine and Safety Tasmania Notice M35/2017

Cancel this notice on receipt.

Chart formerly affected - Aus 790

HYDROGRAPHIC REPORTS

<i>Locality</i>	<i>Report</i>	<i>Ship/Authority</i>	<i>Observer</i>
QLD- Gloucester Passage	Cumulative list error		M Templeton
Howick Group	Missing chart from notice 131/16		S Maxwell
TIMOR SEA	Drifting object	<i>MV Pacific Dawn</i>	M Mazzarini
VIC- West Head	Light beacon established		P Arnold

III

NAVIGATION WARNINGS

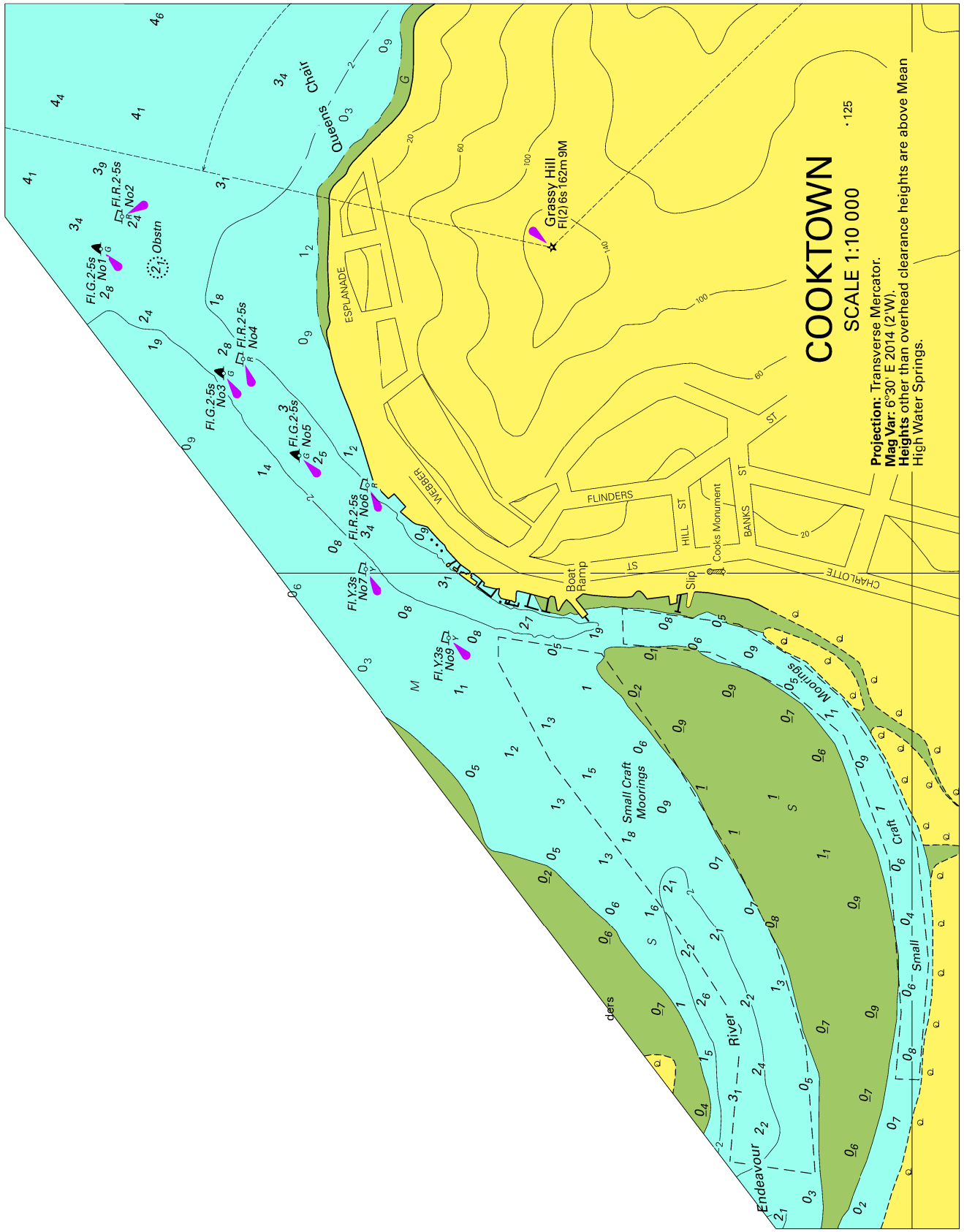
The Australian Hydrographic Service will no longer compile Section III of the Australian Notices to Mariners. For the most up to date navigation warnings please refer to:

AMSA Navigation Warnings

<http://amsa.gov.au/search-and-rescue/distress-and-safety-comms/msi/msi-email/index.asp>

New Zealand Notices to Mariners (Navarea XIV warnings)

<http://www.linz.govt.nz/sea/maritime-safety/notices-mariners>

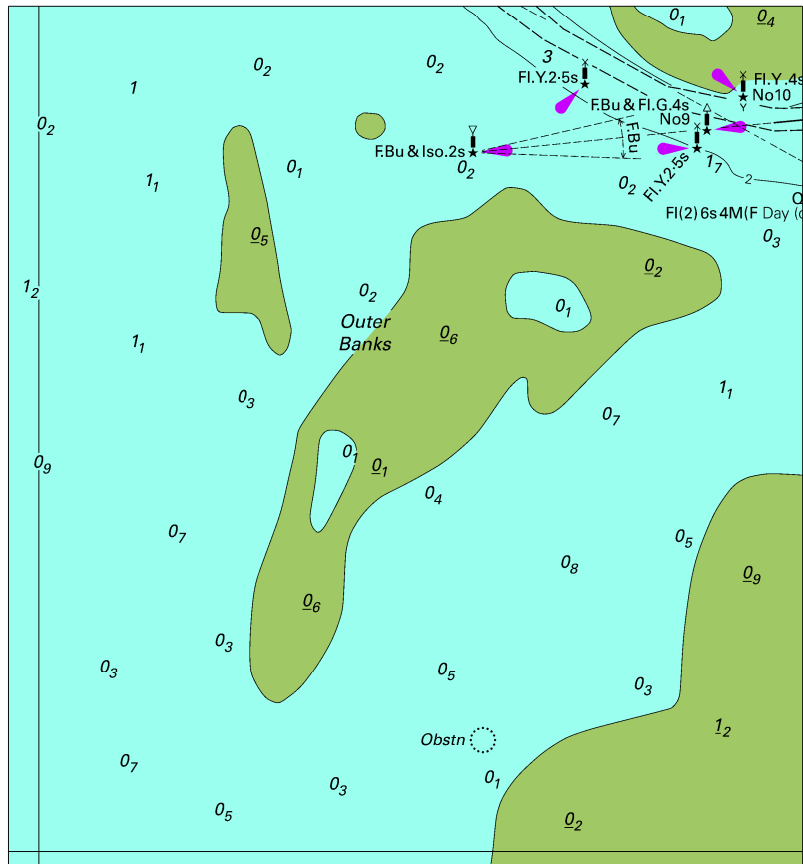


COOKTOWN

SCALE 1:10 000

Projection: Transverse Mercator.
Mag Var: 6°30' E 2014 (2°W).
Heights other than overhead clearance heights are above Mean High Water Springs.

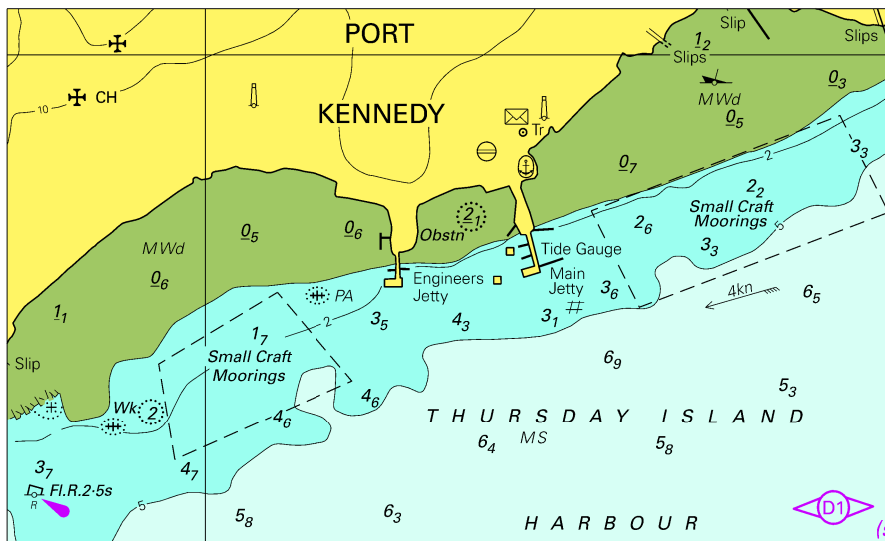
To accompany Australian Notice to Mariners 161/2017



Block for Chart Aus 6 © Commonwealth of Australia 2017

(105.0 x 113.6mm)

To accompany Australian Notice to Mariners 162/2017



Block for Chart Aus 299

© Commonwealth of Australia 2017

(117.1 x 70.6mm)