



24 February 2017

Edition 4

Australian Notices to Mariners are the authority for correcting Australian Charts and Publications

AUSTRALIAN NOTICES TO MARINERS

Notices 123 - 152



Published fortnightly by the Australian Hydrographic Service

Commodore B.K. BRACE RAN
Hydrographer of Australia

SECTIONS.

- I. **Australian Notices to Mariners, including blocks and notes.**
- II. **Hydrographic Reports.**
- III. **Navigational Warnings.**

SUPPLEMENTS.

- I. **Tracings**
- II. **Cumulative List of Australian Notices to Mariners.**
- III. **Cumulative List of Temporary and Preliminary Australian Notices to Mariners.**
- IV. **Temporary and Preliminary Notices in force.**
- V. **Amendments to Admiralty List of Lights and Fog Signals (Vol K), Radio Signals (NP 281(2), 282, 283(2), 285, 286(4)) and Sailing Directions (NP 9, 13, 14, 15, 33, 34, 35, 36, 39, 44, 51, 60, 61, 62, 100, 136).**

© Commonwealth of Australia 2017

This work is copyright. Apart from any use permitted under the Copyright Act 1968, no part may be reproduced by any process, adapted, communicated or commercially exploited without prior written permission from The Commonwealth represented by the Australian Hydrographic Service.

IMPORTANT NOTICE

This edition of Notices to Mariners includes all significant information affecting AHS products which the AHS has become aware of since the last edition. All reasonable efforts have been made to ensure the accuracy and completeness of the information, including third party information, on which these updates are based. The AHS regards third parties from which it receives information as reliable, however the AHS cannot verify all such information and errors may therefore exist. The AHS does not accept liability for errors in third party information.

GENERAL INSTRUCTIONS

The substance of these notices should be inserted on the charts affected.

Bearings are referred to the true compass and are reckoned clockwise from North; those relating to lights are given as seen by an observer from seaward.

Positions quoted in notices relate to WGS84 which is the horizontal datum for all charts produced by the Australian Hydrographic Service.

The range quoted for a light is its nominal range.

Depths are with reference to the chart datum of each chart. Heights are above mean high water springs or mean higher high water, as appropriate.

The capital letter (P) or (T) after the number of any notice denotes a preliminary or temporary notice respectively, which are contained separately at the end of the permanent notices.

A star (*) adjacent to the number of a notice indicates that the notice is based on original information.

REPORTING OF DANGERS

Mariners are particularly requested to notify the AUSTRALIAN HYDROGRAPHIC SERVICE, Locked Bag 8801 Wollongong, NSW 2500 (Fax 02-4223 6599, e-mail datacentre@hydro.gov.au or, alternatively by filling in and submitting the [Hydrographic Notes](#) forms located on the web site – www.hydro.gov.au), immediately on the discovery of new dangers or suspected dangers to navigation. For changes or defects in aids to navigation notify AusSAR (Fax 02-6230 6868 or email rccaus@amsa.gov.au).

AUTHORISED USE

Copies of Australian notices are available free of charge from the Australian Hydrographic Service (AHS) website (www.hydro.gov.au) and through the eNotices (email) service (www.hydro.gov.au/enotices/enotices.htm).

Individual Notices may be copied for the purpose of inserting Notice substance on official charts and publications. Paper copies may be printed by chart agents and distributed to customers on a cost recovery basis. Participating chart agents are listed on the AHS website as providing a 'Paper Notices to Mariners' service (www.hydro.gov.au/webapps/jsp/agents/agents-list.jsp). Copies of the notices may not be sold for profit without prior written agreement.

NUMERICAL INDEX OF NOTICES TO MARINERS

Edition No 4

Notices	Aus Chart, INT Chart, ENC Cell, AHP, BA Pubs
123	Products - New Charts, New Editions, Withdrawn Charts
124	Amendment to Australian National Tide Tables 2017
125	Aus 197, 204, 489, 809
126	Aus 215
127	Aus 192
128	Aus 238
129	Aus 235, 236
130	Aus 245
131	Aus 270, 832
132	Aus 6
133	Aus 252, 253, 269
134	Aus 554, 680
135	Aus 514
136	Aus 29, 309, 316, 722
137	Aus 4722, INT 722
138	Aus 58, 59
139	Aus 117
140	Aus 81
141	Aus 110
142	Aus 52, 54
143	Aus 32
144(T)	Aus 236, 237, 238
145(T)	Aus 230
146(T)	Aus 256, 827
147(T)	Aus 367, 822
148(T)	Aus 252, 253, 269
149(T)	Aus 252, 253
150(T)	Aus 319, 320, 322, 4721, 4722, INT 721, 722
151(T)	Aus 754
152(T)	Aus 154

NUMERICAL INDEX OF CHARTS AFFECTED

Edition No 4

Aus Chart	Notices
Aus 6	132
Aus 29	136
Aus 32	143
Aus 52	142
Aus 54	142
Aus 58	138
Aus 59	138
Aus 81	140
Aus 110	141
Aus 117	139
Aus 154	152(T)
Aus 192	127
Aus 197	125
Aus 204	125
Aus 215	126
Aus 230	145(T)
Aus 235	129
Aus 236	129, 144(T)
Aus 237	144(T)
Aus 238	128, 144(T)
Aus 245	130
Aus 252	133, 148(T), 149(T)
Aus 253	133, 148(T), 149(T)
Aus 256	146(T)
Aus 269	133, 148(T)
Aus 270	131
Aus 309	136
Aus 316	136
Aus 319	150(T)
Aus 320	150(T)
Aus 322	150(T)
Aus 367	147(T)
Aus 489	125
Aus 514	135
Aus 554	134
Aus 680	134
Aus 722	136
Aus 754	151(T)
Aus 809	125
Aus 822	147(T)
Aus 827	146(T)
Aus 832	131
Aus 4721	150(T)
Aus 4722	137, 150(T)

INT Chart	Notices
INT 721	150(T)
INT 722	137, 150(T)

123 AUSTRALIA - Products - New Charts, New Editions, Withdrawn Charts
UKHO

New Charts

<i>Chart</i>	<i>Title and Geographical limits</i>	<i>Scale</i>	<i>Publication Date</i>	<i>Remarks</i>
NIL				

New Electronic Navigation Chart (Aus ENC)

<i>Cell Name</i>	<i>Title</i>	<i>Publication Date</i>	<i>Remarks</i>
NIL			

New Editions and Withdrawn Charts

<i>Chart</i>	<i>Title</i>	<i>Scale</i>	<i>Publication Date</i>	<i>Remarks</i>
NIL				

Admiralty publication

<i>NP No</i>	<i>Title</i>	<i>Date</i>	<i>Remarks</i>
NP283(2)	Admiralty List of Radio Signals. Maritime Safety Information Services. The Americas, Far East and Oceania 2017/18.	2/3/2017	The 2016/2017 Edition of NP283(2) is cancelled.

Chart permanently withdrawn

Charts listed above as withdrawn no longer meet chart carriage requirements and should be marked as "superseded" and replaced with the new chart/ new edition listed prior to passage through the area covered by the new chart.

When placing orders with a chart agent between notice of forthcoming edition and its publication, mariners should advise whether their order pertains to the current edition or the new edition.

For further details refer to the AHS website at www.hydro.gov.au for new edition and new chart stock arrival information.

124 AUSTRALIA - Product - Amendment to Australian National Tide Tables 2017
Australian Hydrographic Service

Page 452
Amend Brisbane Bar To Chart Datum AUS 236 NE 10 FEB 2017 0.0

Page 453
Amend Bundaberg To Chart Datum AUS 242 NE 10 FEB 2017 0.0
Carnarvon To Chart Datum AUS 331 NE 10 FEB 2017 0.0

Page 454
Amend Denham To Chart Datum AUS 331 NE 10 FEB 2017 0.0
Fremantle To Chart Datum AUS 113 NE 27 JAN 2017 0.0

Page 456
Amend Mooloolaba To Chart Datum AUS 235 NE 10 FEB 2017 0.0

125 AUSTRALIA - NEW SOUTH WALES - Bangalley Head - Wreck

S Willan

Aus 197 [88/2017]

Insert	depth, 53m, enclosed by danger circle with legend, <i>Wk</i>	33° 38'.94 S	151° 24'.36 E
--------	--	--------------	---------------

Aus 204 [88/2017]

Insert	depth, 53m, enclosed by danger circle with legend, <i>Wk</i>	33° 38'.94 S	151° 24'.36 E
--------	--	--------------	---------------

Aus 489 [88/2017]

Insert	depth, 53m, enclosed by danger circle with legend, <i>Wk</i>	33° 38'.94 S	151° 24'.36 E
--------	--	--------------	---------------

Delete	depth, 58m	33° 38'.5 S	151° 24'.8 E
--------	------------	-------------	--------------

Aus 809 [88/2017]

Insert	depth, 53m, enclosed by danger circle with legend, <i>Wk</i>	33° 38'.94 S	151° 24'.36 E
--------	--	--------------	---------------

126 AUSTRALIA - NEW SOUTH WALES - Pittwater - Great Mackerel Beach - Buoys

NSW Roads and Maritime Services

Aus 215 [632/2016]

Insert	special conical buoy, without topmark	33° 35'.482 S	151° 18'.130 E
	special conical buoy, without topmark	33° 35'.560 S	151° 18'.170 E

127 AUSTRALIA - NEW SOUTH WALES - Twofold Bay - East Boyd Bay - Obstruction

Office of Environment and Heritage NSW

Aus 192 [NE 7/10/2016]

Insert	#	37° 06'.66 S	149° 55'.49 E
--------	---	--------------	---------------

Aus 192 (plan, East Boyd Bay Wharves) [NE 7/10/2016]

Insert	#	37° 06'.66 S	149° 55'.49 E
--------	---	--------------	---------------

128 AUSTRALIA - QUEENSLAND - Brisbane River - Hamilton Reach - Light; light beacon

Maritime Safety Queensland Notice 13/2017

Aus 238 [45/2017]

Insert	light beacon, <i>F.Bu & Fl.G.3s (F Day) No15F</i> , with starboard lateral topmark	27° 26'.411 S	153° 03'.597 E
--------	--	---------------	----------------

Delete	light	27° 26'.38 S	153° 03'.51 E
--------	-------	--------------	---------------

129 AUSTRALIA - QUEENSLAND - Flinders Reef - Moorings

Maritime Safety Queensland

Aus 235 [NE 10/2/2017]

Insert	legend, <i>Moorings</i>	26° 58'.5 S	153° 28'.8 E
--------	-------------------------	-------------	--------------

Delete	mooring buoy	26° 58'.7 S	153° 29'.0 E
	mooring buoy	26° 58'.5 S	153° 29'.2 E

Aus 236 [NE 10/2/2017]

Insert	legend, <i>Moorings</i>	26° 58'.5 S	153° 28'.8 E
--------	-------------------------	-------------	--------------

Delete	mooring buoy	26° 58'.7 S	153° 29'.0 E
	mooring buoy	26° 58'.5 S	153° 29'.2 E

130 AUSTRALIA - QUEENSLAND - Gladstone - Pelican Banks - Light

Maritime Safety Queensland

Aus 245 [634/2016]

Amend	light to <i>/so.2s</i>	23° 46'.37 S	151° 19'.58 E
-------	------------------------	--------------	---------------

131 AUSTRALIA - QUEENSLAND - Howick Group - Depths

HMAS Shepparton

Aus 270 (plan, Howick Group) [1172/2016]

Insert	depth, 9 _m (a)	14° 27'.69 S	144° 46'.20 E
	depth, 9 _m (b)	14° 27'.45 S	144° 46'.38 E
	depth, 9 _m (c)	14° 27'.72 S	144° 46'.77 E
	depth, 7 _m (d), and extend contour NE to enclose (a), (b), (c) and (d)	14° 27'.95 S	144° 46'.47 E

Delete	depth, 12 ₅ m	14° 27'.5 S	144° 46'.4 E
	depth, 13 _m	14° 27'.8 S	144° 46'.8 E
	depth, 12 ₅ m	14° 28'.0 S	144° 46'.5 E
	depth, 11m	14° 27'.8 S	144° 46'.1 E

Aus 832 [1172/2016]

Insert	depth, 9 ₄ m, and extend contour E to enclose	14° 27'.72 S	144° 46'.77 E
--------	--	--------------	---------------

Delete	depth, 12 ₅ m	14° 27'.5 S	144° 46'.4 E
--------	--------------------------	-------------	--------------

132 AUSTRALIA - QUEENSLAND - Karumba - Light beacons

Maritime Safety Queensland Notice 4/2017

Aus 6 [688/2013]

Amend	light beacon to <i>F.Bu</i> & <i>Iso.2s</i>	17° 26'.75 S	140° 44'.81 E
	light beacon to <i>F.Bu</i> & <i>Fl.G.4s No9</i>	17° 26'.71 S	140° 45'.25 E

133 AUSTRALIA - QUEENSLAND - Shute Harbour - Depths

Maritime Safety Queensland

Aus 252 [697/2016]

Delete	depth, 11 ₉ m	20° 17'.8 S	148° 47'.3 E
--------	--------------------------	-------------	--------------

Aus 253 [697/2016]

Insert	depth, 10 ₆ m, enclosed by danger circle with legend, <i>Wk</i>	20° 17'.760 S	148° 47'.239 E
--------	--	---------------	----------------

Delete	depth, 10 ₉ m	20° 17'.8 S	148° 47'.3 E
--------	--------------------------	-------------	--------------

Aus 269 (plan, Shute Harbour) [NC 8/4/2016]

Insert	depth, 4 ₄ m enclosed by contour	20° 18'.124 S	148° 47'.219 E
	depth, 10 ₆ m, enclosed by danger circle with legend, <i>Wk</i>	20° 17'.760 S	148° 47'.239 E
	depth, 3 ₃ m, enclosed by danger circle with legend, <i>Wk</i>	20° 17'.743 S	148° 47'.321 E

Replace	depth, 12 ₃ m, with drying height, 0 ₃ m, enclosed by contour	20° 17'.55 S	148° 47'.91 E
---------	---	--------------	---------------

Delete	depth, 14 ₁ m	20° 17'.74 S	148° 47'.24 E
	depth, 7 ₈ m	20° 17'.73 S	148° 47'.31 E
	depth, 4m and enclosing contour	20° 17'.76 S	148° 47'.32 E

134 PAPUA NEW GUINEA - Credner Islands - Depths; ZOC diagram

IXSurvey Australia Pty Ltd

Aus 554 [228/2012]

Insert	accompanying block	4° 17'.0 S	152° 22'.0 E
--------	--------------------	------------	--------------

Aus 680 [921/2015]

Insert	accompanying block A	4° 17'.0 S	152° 22'.0 E
--------	----------------------	------------	--------------

Aus 680 (plan, Simpson and Matupit Harbours) [921/2015]

Insert	accompanying block B	4° 12'.2 S	152° 12'.2 E
--------	----------------------	------------	--------------

135* PAPUA NEW GUINEA - Kwaiapan Bay - ZOC diagram

Australian Hydrographic Service

Aus 514 [385/2016]

Insert	accompanying block	8° 50'.0 S	153° 15'.0 E
--------	--------------------	------------	--------------

136 AUSTRALIA - NORTHERN TERRITORY - Darwin - Cox Peninsula - Radio masts

Department of Infrastructure, Planning and Logistics NT

Aus 29 [1141/2016]

Delete	radio mast	12° 24'.5 S	130° 37'.6 E
	radio mast	12° 24'.5 S	130° 37'.5 E
	radio mast	12° 24'.6 S	130° 37'.4 E
	radio mast	12° 24'.7 S	130° 37'.4 E
	radio mast	12° 24'.7 S	130° 37'.3 E
	legend, (R Lts)	12° 24'.6 S	130° 37'.6 E

Aus 309 [1201/2016]

Delete	mast	12° 24'.3 S	130° 37'.2 E
	mast	12° 24'.6 S	130° 37'.0 E
	legend, Masts	12° 24'.4 S	130° 36'.5 E

Aus 316 [1201/2016]

Delete	radio mast	12° 24'.5 S	130° 37'.6 E
	radio mast	12° 24'.5 S	130° 37'.5 E
	radio mast	12° 24'.7 S	130° 37'.3 E
	legend, Masts	12° 24'.5 S	130° 36'.5 E

Aus 722 [NE 10/2/2017]

Delete	radio mast	12° 24'.5 S	130° 37'.6 E
	radio mast	12° 24'.5 S	130° 37'.5 E
	radio mast	12° 24'.7 S	130° 37'.3 E

137 INDONESIA - Sumbawa - Pulau Moyo - Lights

UKHO Notice 6473/51/2016

Aus 4722 (INT 722) [51/2017]

Insert	light, <i>Fl.12M</i>	8° 07'.0 S	117° 45'.6 E
	light, <i>Fl.12M</i>	8° 08'.8 S	117° 44'.0 E
	light, <i>Fl.12M</i>	8° 10'.8 S	117° 41'.4 E
	light, <i>Fl.18M</i>	8° 12'.9 S	117° 42'.6 E

138 AUSTRALIA - WESTERN AUSTRALIA - Dampier - Nav aids

UKHO

Aus 58 [52/2017]

Amend	light to <i>FAI.WRG.48m 3M & F.Bu.59m 6M</i>	20° 37'.07 S	116° 45'.12 E
	light range to <i>3M</i>	20° 37'.69 S	116° 44'.07 E

Aus 59 [52/2017]

Amend	light range to <i>3M</i>	20° 37'.69 S	116° 44'.07 E
-------	--------------------------	--------------	---------------

139 AUSTRALIA - WESTERN AUSTRALIA - Fremantle - Success Channel - Topmarks

Fremantle Ports

Aus 117 [94/2017]

Insert	port lateral topmark	32° 05'.380 S	115° 41'.678 E
	starboard lateral topmark	32° 05'.759 S	115° 41'.657 E

140 AUSTRALIA - WESTERN AUSTRALIA - Geraldton - Depths

Precision Hydrographic Services

Aus 81 [NE 4/11/2016]

Insert	depth, 4 ₉ m, enclosed by contour	28° 46'.056 S	114° 35'.229 E
--------	--	---------------	----------------

Replace	depth, 4 ₉ m, with depth, 2m, enclosed by contour	28° 46'.52 S	114° 36'.12 E
---------	--	--------------	---------------

Aus 81 (plan, Port of Geraldton) [NE 4/11/2016]

Insert	depth, 4 ₉ m, enclosed by contour	28° 46'.056 S	114° 35'.229 E
--------	--	---------------	----------------

Replace	depth, 8 ₃ m, with depth, 5 ₅ m	28° 46'.25 S	114° 35'.61 E
	depth, 4 ₉ m, with depth, 2m, enclosed by contour	28° 46'.52 S	114° 36'.12 E

141 AUSTRALIA - WESTERN AUSTRALIA - Oyster Harbour - Emu Point - Beacon

Department of Transport WA Notice 27/2017

Aus 110 [96/2017]

Delete	starboard lateral beacon	34° 59'.61 S	117° 56'.70 E
--------	--------------------------	--------------	---------------

142 AUSTRALIA - WESTERN AUSTRALIA - Port Hedland - Depth; light buoys

Pilbara Ports Authority Notice 1/2017

Aus 52 [1201/2016]

Insert	depth, 4 ₈ m, enclosed by contour	20° 19'.820 S	118° 35'.324 E
--------	--	---------------	----------------

Delete	depth, 6m	20° 19'.80 S	118° 35'.31 E
--------	-----------	--------------	---------------

Aus 54 [1149/2015]

Insert	depth, 4 ₈ m, enclosed by contour	20° 19'.820 S	118° 35'.324 E
	special conical light buoy, Fl. Y. 2s, with topmark	20° 19'.810 S	118° 35'.092 E
	special conical light buoy, Fl. Y. 2s, with topmark	20° 19'.745 S	118° 35'.183 E

Delete	light buoy	20° 19'.81 S	118° 35'.10 E
	light buoy	20° 19'.72 S	118° 35'.21 E

143 AUSTRALIA - WESTERN AUSTRALIA - Wyndham - Light beacon; light buoy

Department of Transport WA Notice 125/2016

Aus 32 (plan, Approaches to Wyndham Wharf) [9/2017]

Amend	light buoy to Fl. R. 5s No12	15° 23'.31 S	128° 06'.82 E
-------	------------------------------	--------------	---------------

Delete	light beacon	15° 23'.34 S	128° 06'.91 E
--------	--------------	--------------	---------------

144(T)/2017 AUSTRALIA - QUEENSLAND - Brisbane River - Dredging operations

Former Notice - 1180(T)/2016 is cancelled

Maritime Safety Queensland Notice 459(T)/2016, 40(T)/2017

The dredge *Brisbane* is conducting dredging operations in the Port of Brisbane from the entrance beacons (27° 18'.59 S 153° 12'.57 E) to the upstream end of Hamilton Reach (27° 26'.47 S 153° 03'.70 E).

A pipeline marked by white lights and 3 yellow light buoys, Q.Y, exists from position 27° 24'.70 S 153° 08'.71 E to the northern shore line.

The dredge will display appropriate lights and shapes and will monitor VHF Ch 12.

Mariners are advised to navigate with caution in the area.

Chart temporarily affected - Aus 236 - Aus 237 - Aus 238

145(T)/2017 AUSTRALIA - QUEENSLAND - Gold Coast - North Channel - Shoaling

Maritime Safety Queensland

Shoaling, with a least depth of 3.1m, exists in North Channel in the vicinity of position 27° 55'.74 S 153° 25'.11 E.

Mariners are advised to navigate with caution in the area.

Chart temporarily affected - Aus 230

146(T)/2017 AUSTRALIA - QUEENSLAND - Rattlesnake Island - Live firing completed

Former Notice - 114(T)/2017 is cancelled

Maritime Safety Queensland Notice 30(T)/2017

Cancel this notice on receipt.

Chart formerly affected - Aus 256 - Aus 827

147(T)/2017 AUSTRALIA - QUEENSLAND - Shoalwater Bay - Live firing

Maritime Safety Queensland Notice 47(T)/2017

Live firing will be conducted in the Shoalwater Bay training area during the period 6 March to 27 April 2017.

A marine danger area extends to all internal waters bounded by the following positions:

22° 30'.73 S 150° 26'.34 E
22° 35'.87 S 150° 28'.80 E
22° 40'.00 S 150° 38'.00 E
22° 33'.23 S 150° 35'.28 E
22° 31'.27 S 150° 29'.21 E.

All waters, creeks, beaches and other areas within the declared marine danger area are not available for access.

There will be a safe anchorage available at Freshwater, Port Clinton, West Water Port Clinton, South Arm Port Clinton, Pearl Bay, Island Head Creek and Supply Bay Townshend Island.

Mariners are advised to keep clear of this area throughout the above times.

Chart temporarily affected - Aus 367 - Aus 822

148(T)/2017 AUSTRALIA - QUEENSLAND - Shute Harbour - Harbour works

Maritime Safety Queensland Notice 43(T)/2017, 45(T)/2017

Works associated with the demolition of the jetty (20° 17'.58 S 148° 47'.23 E) are in progress.

Vessels *Swordfish*, *PMG 120* and *PMG 181* are on site and will display appropriate lights and shapes and monitor VHF Ch 12 and Ch 16.

The light, *F.Bu (F Day)* (20° 17'.58 S 148° 47'.21 E), has been temporarily repositioned to 20° 17'.59 S 148° 47'.17 E.

Mariners are advised to navigate with caution in the area.

Chart temporarily affected - Aus 252 - Aus 253 - Aus 269

149(T)/2017 AUSTRALIA - QUEENSLAND - South Molle Island - Harbour works completed

Former Notice - 70(T)/2017 is cancelled

Maritime Safety Queensland Notice 45(T)/2017

Cancel this notice on receipt.

Chart formerly affected - Aus 252 - Aus 253

150(T)/2017 AUSTRALIA - WESTERN AUSTRALIA - Browse Island - Drill rig northwestwards

Former Notice - 74(T)/2017 is cancelled

MODU *ENSCO 5006*

Drill rig *ENSCO 5006* is conducting drilling operations in position 13° 54'.28 S 123° 09'.87 E.

Chart temporarily affected - Aus 319 - Aus 320 - Aus 322 - Aus 4721 (INT 721) - Aus 4722 (INT 722)

151(T)/2017 AUSTRALIA - WESTERN AUSTRALIA - Marmion Reef - Light buoy

Department of Transport WA Notice 130/2016

A special light buoy, *Fl.Y.5s*, exists in position 31° 49'.84 S 115° 42'.25 E.

Chart temporarily affected - Aus 754

152(T)/2017 AUSTRALIA - VICTORIA - Port Phillip - Yarra River - Holden Dock - Harbour works

Former Notice - 703(T)/2015 is cancelled

Victorian Ports Corporation (Melbourne) Notice 71(T)/2017

Harbour works are in progress at Holden Dock (37° 49'.44 S 144° 54'.09 E).

Mariners are advised to navigate with caution in the area.

Chart temporarily affected - Aus 154

HYDROGRAPHIC REPORTS

<i>Locality</i>	<i>Report</i>	<i>Ship/Authority</i>	<i>Observer</i>
QLD- Lads Passage	ENC enhancement		W Conlin

III

NAVIGATION WARNINGS

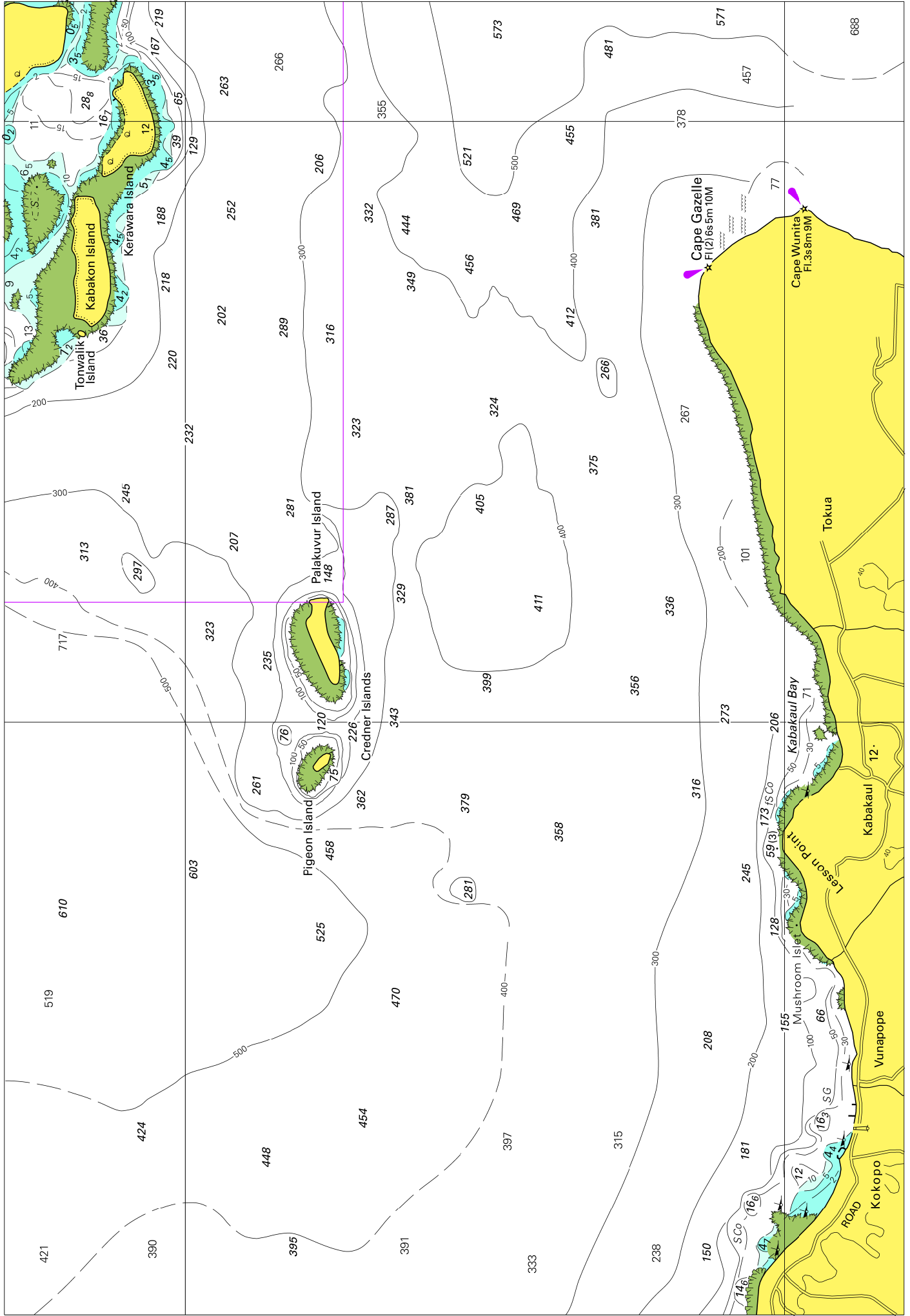
The Australian Hydrographic Service will no longer compile Section III of the Australian Notices to Mariners. For the most up to date navigation warnings please refer to:

AMSA Navigation Warnings

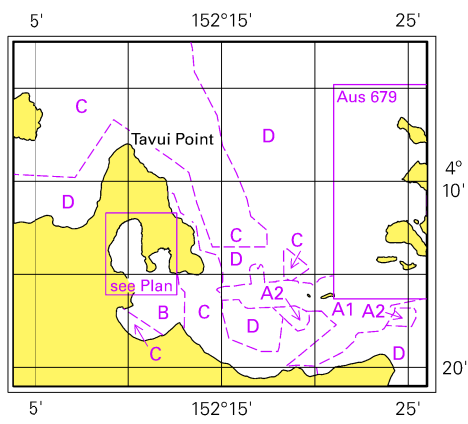
<http://amsa.gov.au/search-and-rescue/distress-and-safety-comms/msi/msi-email/index.asp>

New Zealand Notices to Mariners (Navarea XIV warnings)

<http://www.linz.govt.nz/sea/maritime-safety/notices-mariners>

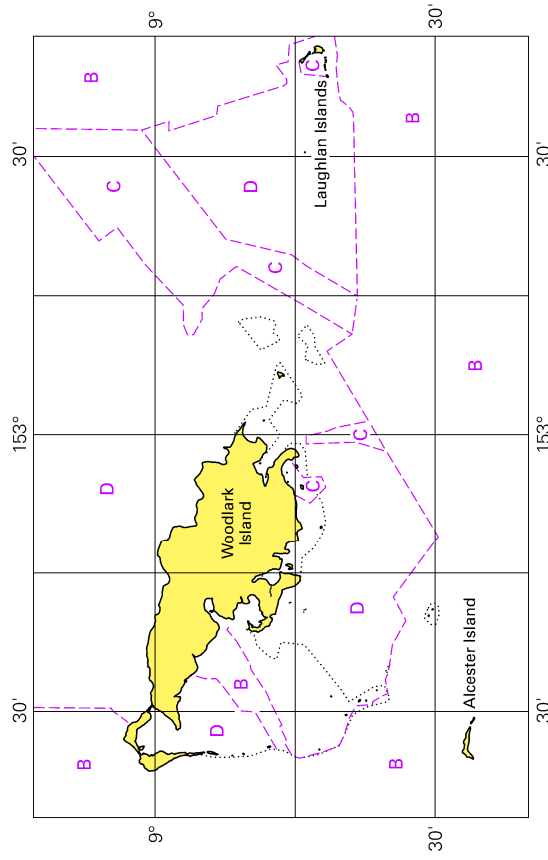


To accompany Australian Notice to Mariners 134/2017



© Commonwealth of Australia 2017
Block B for Chart Aus 680 (57.0 x 47.0mm)

To accompany Australian Notice to Mariners 135/2017



© Commonwealth of Australia 2017

(103.3 x 65.3mm)

Block for chart Aus 514