



10 February 2017

Edition 3

Australian Notices to Mariners are the authority for correcting Australian Charts and Publications

AUSTRALIAN NOTICES TO MARINERS

Notices 85 - 122



Published fortnightly by the Australian Hydrographic Service

Commodore B.K. BRACE RAN
Hydrographer of Australia

SECTIONS.

- I. **Australian Notices to Mariners, including blocks and notes.**
- II. **Hydrographic Reports.**
- III. **Navigational Warnings.**

SUPPLEMENTS.

- I. **Tracings**
- II. **Cumulative List of Australian Notices to Mariners.**
- III. **Cumulative List of Temporary and Preliminary Australian Notices to Mariners.**
- IV. **Temporary and Preliminary Notices in force.**
- V. **Amendments to Admiralty List of Lights and Fog Signals (Vol K), Radio Signals (NP 281(2), 282, 283(2), 285, 286(4)) and Sailing Directions (NP 9, 13, 14, 15, 33, 34, 35, 36, 39, 44, 51, 60, 61, 62, 100, 136).**

© Commonwealth of Australia 2017

This work is copyright. Apart from any use permitted under the Copyright Act 1968, no part may be reproduced by any process, adapted, communicated or commercially exploited without prior written permission from The Commonwealth represented by the Australian Hydrographic Service.

IMPORTANT NOTICE

This edition of Notices to Mariners includes all significant information affecting AHS products which the AHS has become aware of since the last edition. All reasonable efforts have been made to ensure the accuracy and completeness of the information, including third party information, on which these updates are based. The AHS regards third parties from which it receives information as reliable, however the AHS cannot verify all such information and errors may therefore exist. The AHS does not accept liability for errors in third party information.

GENERAL INSTRUCTIONS

The substance of these notices should be inserted on the charts affected.

Bearings are referred to the true compass and are reckoned clockwise from North; those relating to lights are given as seen by an observer from seaward.

Positions quoted in notices relate to WGS84 which is the horizontal datum for all charts produced by the Australian Hydrographic Service.

The range quoted for a light is its nominal range.

Depths are with reference to the chart datum of each chart. Heights are above mean high water springs or mean higher high water, as appropriate.

The capital letter (P) or (T) after the number of any notice denotes a preliminary or temporary notice respectively, which are contained separately at the end of the permanent notices.

A star (*) adjacent to the number of a notice indicates that the notice is based on original information.

REPORTING OF DANGERS

Mariners are particularly requested to notify the AUSTRALIAN HYDROGRAPHIC SERVICE, Locked Bag 8801 Wollongong, NSW 2500 (Fax 02-4223 6599, e-mail datacentre@hydro.gov.au or, alternatively by filling in and submitting the [Hydrographic Notes](#) forms located on the web site – www.hydro.gov.au), immediately on the discovery of new dangers or suspected dangers to navigation. For changes or defects in aids to navigation notify AusSAR (Fax 02-6230 6868 or email rccaus@amsa.gov.au).

AUTHORISED USE

Copies of Australian notices are available free of charge from the Australian Hydrographic Service (AHS) website (www.hydro.gov.au) and through the eNotices (email) service (www.hydro.gov.au/enotices/enotices.htm).

Individual Notices may be copied for the purpose of inserting Notice substance on official charts and publications. Paper copies may be printed by chart agents and distributed to customers on a cost recovery basis. Participating chart agents are listed on the AHS website as providing a 'Paper Notices to Mariners' service (www.hydro.gov.au/webapps/jsp/agents/agents-list.jsp). Copies of the notices may not be sold for profit without prior written agreement.

NUMERICAL INDEX OF NOTICES TO MARINERS

Edition No 3

Notices	Aus Chart, INT Chart, ENC Cell, AHP, BA Pubs
85	Aus 235, 236, 242, 331, 722
86	Aus 154
87	Amendment to Seafarers Handbook for Australian Waters AHP20
88	Aus 197, 204, 489, 809
89	Aus 201, 202, 203
90	Aus 842
91	Aus 301
92	Aus 24, 25, 26, 27, 28
93	Aus 116
94	Aus 114, 117
95	Aus 328, 329, 4723, 4725, INT 723, 725
96	Aus 110
97	Aus 129, 485, 780
98	Aus 121
99	Aus 778
100	Aus 148, 802
101	Aus 143, 158
102	Aus 155
103	Aus 154
104	Aus 178, 487, 790, 801
105	Aus 170, 766, 797
106	Aus 790
107	Aus 178
108(T)	Aus 197, 489, 808, 4060, 4601, 4602, 4604, 4643, INT 60, 601, 602, 604, 643
109(T)	Aus 241, 817
110(T)	Aus 249, 823
111(T)	Aus 236
112(T)	Aus 236
113(T)	Aus 252, 253, 824, 825
114(T)	Aus 256, 827
115(T)	Aus 252, 253, 269, 824, 825
116(T)	Aus 754
117(T)	Aus 52, 53
118(T)	Aus 32
119(T)	Aus 349, 787
120(T)	Aus 154
121(T)	Aus 357, 487
122(T)	Aus 169

NUMERICAL INDEX OF CHARTS AFFECTED

Edition No 3

Aus Chart	Notices
Aus 24	92
Aus 25	92
Aus 26	92
Aus 27	92
Aus 28	92
Aus 32	118(T)
Aus 52	117(T)
Aus 53	117(T)
Aus 110	96
Aus 114	94
Aus 116	93
Aus 117	94
Aus 121	98
Aus 129	97
Aus 143	101
Aus 148	100
Aus 154	86, 103, 120(T)
Aus 155	102
Aus 158	101
Aus 169	122(T)
Aus 170	105
Aus 178	104, 107
Aus 197	88, 108(T)
Aus 201	89
Aus 202	89
Aus 203	89
Aus 204	88
Aus 235	85
Aus 236	85, 111(T), 112(T)
Aus 241	109(T)
Aus 242	85
Aus 249	110(T)
Aus 252	113(T), 115(T)
Aus 253	113(T), 115(T)
Aus 256	114(T)
Aus 269	115(T)
Aus 301	91
Aus 328	95
Aus 329	95
Aus 331	85
Aus 349	119(T)
Aus 357	121(T)
Aus 485	97
Aus 487	104, 121(T)
Aus 489	88, 108(T)
Aus 722	85
Aus 754	116(T)
Aus 766	105
Aus 778	99
Aus 780	97
Aus 787	119(T)
Aus 790	104, 106
Aus 797	105
Aus 801	104

Aus Chart	Notices
Aus 802	100
Aus 808	108(T)
Aus 809	88
Aus 817	109(T)
Aus 823	110(T)
Aus 824	113(T), 115(T)
Aus 825	113(T), 115(T)
Aus 827	114(T)
Aus 842	90
Aus 4060	108(T)
Aus 4601	108(T)
Aus 4602	108(T)
Aus 4604	108(T)
Aus 4643	108(T)
Aus 4723	95
Aus 4725	95

INT Chart	Notices
INT 60	108(T)
INT 601	108(T)
INT 602	108(T)
INT 604	108(T)
INT 643	108(T)
INT 723	95
INT 725	95

85 AUSTRALIA - Products - New Charts, New Editions, Withdrawn Charts

Australian Hydrographic Service

New Charts

Chart	Title and Geographical limits	Scale	Publication Date	Remarks
NIL				

New Electronic Navigation Chart (Aus ENC)

Cell Name	Title	Publication Date	Remarks
NIL			

New Editions and Withdrawn Charts

Chart	Title	Scale	Publication Date	Remarks
Aus 235 Edition 6	Australia - East Coast - Queensland - Approaches to Moreton Bay Plan: Mooloolaba Harbour	1:75 000 1:10 000	10 February 2017	New edition with general updating throughout; including nav aids; new routing measures and bathymetric data. Chart Aus 235 Edition 5 dated 17 December 2010 is now superseded and must be withdrawn from use.
Aus 236 Edition 6	Australia - East Coast - Queensland - Moreton Bay Plan: Manly Boat Harbour	1:75 000 1:20 000	10 February 2017	New edition with general updating throughout; including nav aids; new routing measures and bathymetric data. Chart Aus 236 Edition 5 dated 17 December 2010 is now superseded and must be withdrawn from use.
Aus 242 Edition 5	Australia - East Coast - Queensland - Port Bundaberg including Burnett River Plans: Port Bundaberg Burnett River (Northern Section) Burnett River (Southern Section)	 1:7 500 1:10 000 1:10 000	10 February 2017	New edition with general updating throughout; including new bathymetric data. Chart Aus 242 Edition 4 dated 17 January 2014 is now superseded and must be withdrawn from use.
Aus 331 Edition 2	Australia - West Coast - Western Australia - Point Quobba to Pepper Point Plans: Cape Peron Flats Denham Monkey Mia	1:300 000 1:150 000 1:150 000 1:150 000	10 February 2017	New edition with improved coverage of Cape Peron Flats, Denham and Monkey Mia and chart rescheme. Chart Aus 331 Edition 1 dated 16 July 2010 is now superseded and must be withdrawn from use.
Aus 722 Edition 4	Australia - North Coast - Northern Territory - Beagle Gulf and Clarence Strait	1:150 000	10 February 2017	New edition with general updating throughout; including new bathymetric data. Chart Aus 722 Edition 3 dated 5 December 2014 is now superseded and must be withdrawn from use.

Chart permanently withdrawn

Charts listed above as withdrawn no longer meet chart carriage requirements and should be marked as "superseded" and replaced with the new chart/ new edition listed prior to passage through the area covered by the new chart.

When placing orders with a chart agent between notice of forthcoming edition and its publication, mariners should advise whether their order pertains to the current edition or the new edition.

For further details refer to the AHS website at www.hydro.gov.au for new edition and new chart stock arrival information.

86 AUSTRALIA - Products- New Charts and New Editions to be published shortly
Australian Hydrographic Service

New Charts to be published shortly

<i>Chart</i>	<i>Title</i>	<i>Scale</i>	<i>Expected Publication Date</i>	<i>Remarks</i>
NIL				

New Editions to be published shortly

<i>Chart</i>	<i>Title</i>	<i>Scale</i>	<i>Expected Publication Date</i>	<i>Remarks</i>
Aus 154	Australia - South Coast - Victoria - Port of Melbourne - Williamstown and Yarra River Inset: Yarra River	1:7 500 1:7 500	24 February 2017	New edition with general updating throughout; including infrastructure.

87 AUSTRALIA - Product - Amendment to Seafarers Handbook for Australian Waters AHP20

Maritime Safety Queensland , Southern Ports Authority - Port of Esperance , Rio Tinto , Tasmanian Ports Corporation

Chapter 12 - Queensland – page 236 - 12.5 - paragraph 3

Replace table with accompanying block

Chapter 12 – The Regional Harbour Master - page 237 - 12.5.1 - paragraph 4 line 7

Delete Hay Point
Insert Townsville

Chapter 12 – Regional Harbour Master Contact Details - page 237 – 12.5.1 - paragraph 6

Replace table with accompanying block

Chapter 12 – Maritime Information – page 237 – 12.5.2

Replace table with accompanying block

Chapter 12 – Queensland Port Tables – pages 238-240 - 12.5.3

Replace Bundaberg, Gladstone, Hay Point and Port Alma tables with accompanying blocks

Chapter 12 – Tasmania Port Tables – page 249 - 12.8.2

Replace Hobart table with accompanying block

Chapter 12 – Western Australia Port Tables – page 256-257 - 12.10.2

Replace Esperance and Port Walcott tables with accompanying blocks

88 AUSTRALIA - NEW SOUTH WALES - Bangalley Head - Wrecks

Former Notice - 1255(P)/2016 is cancelled
S Willan

Aus 197 [43/2017]

Insert	safe clearance depth, 33m, enclosed by danger circle with legend, Wk	33° 37'.10 S	151° 22'.96 E
	safe clearance depth, 29m, enclosed by danger circle with legend, Wk	33° 37'.59 S	151° 23'.32 E

Aus 204 [501/2016]

Insert	safe clearance depth, 33m, enclosed by danger circle with legend, Wk	33° 37'.10 S	151° 22'.96 E
	safe clearance depth, 29m, enclosed by danger circle with legend, Wk	33° 37'.59 S	151° 23'.32 E

Aus 489 [43/2017]

Insert	safe clearance depth, 29m, enclosed by danger circle with legend, Wk	33° 37'.59 S	151° 23'.32 E
--------	--	--------------	---------------

Delete	depth, 38m, and enclosing danger circle with legend, Wk	33° 38'.3 S	151° 22'.8 E
--------	---	-------------	--------------

Aus 809 [1061/2016]

Insert	safe clearance depth, 33m, enclosed by danger circle with legend, Wk	33° 37'.10 S	151° 22'.96 E
	safe clearance depth, 29m, enclosed by danger circle with legend, Wk	33° 37'.59 S	151° 23'.32 E

89 AUSTRALIA - NEW SOUTH WALES - Port Jackson - Depths

Port Authority of New South Wales

Aus 201 [1019/2016]

Insert	depth, 0 ₅ m, enclosed by contour	33° 48'.553 S	151° 16'.559 E
	depth, 1 ₃ m, enclosed by contour	33° 48'.482 S	151° 16'.930 E
	depth, 4 ₅ m, enclosed by contour	33° 48'.558 S	151° 16'.942 E

Delete	depth, 4m	33° 48'.54 S	151° 16'.55 E
--------	-----------	--------------	---------------

Aus 202 [1230/2016]

Insert	depth, 1 ₈ m, enclosed by contour	33° 52'.355 S	151° 14'.067 E
	depth, 0 ₇ m, enclosed by contour	33° 52'.416 S	151° 13'.854 E
	depth, 1 ₄ m, and extend contour E to enclose	33° 52'.282 S	151° 13'.913 E
	depth, 2m, enclosed by contour	33° 50'.742 S	151° 11'.840 E
	rock which covers and uncovers enclosed by danger circle	33° 50'.747 S	151° 12'.059 E
	depth, 2m, enclosed by contour	33° 50'.777 S	151° 12'.084 E
	depth, 0 ₃ m, enclosed by contour	33° 50'.657 S	151° 12'.463 E
	depth, 9 ₃ m, enclosed by contour	33° 50'.874 S	151° 12'.448 E
	2m contour, between	33° 50'.685 S	151° 14'.214 E
		33° 50'.696 S	151° 14'.204 E
		33° 50'.706 S	151° 14'.213 E
		33° 50'.703 S	151° 14'.224 E

Replace	depth, 2 ₈ m, with depth, 1 ₂ m and extend contour W to enclose	33° 50'.365 S	151° 13'.878 E
---------	---	---------------	----------------

Delete	depth, 7 ₇ m	33° 50'.77 S	151° 12'.09 E
	depth, 3 ₅ m	33° 50'.69 S	151° 14'.21 E

Aus 203 [1104/2016]

Insert	contour, between	33° 50'.610 S	151° 08'.671 E
		33° 50'.609 S	151° 08'.664 E
		33° 50'.624 S	151° 08'.653 E
		33° 50'.645 S	151° 08'.656 E
	depth, 0 ₃ m, enclosed by contour	33° 50'.508 S	151° 07'.695 E

Replace	depth, 6 ₈ m, with depth, 4 ₃ m and extend contour E to enclose	33° 50'.632 S	151° 07'.833 E
---------	---	---------------	----------------

Delete	contour, between	33° 50'.64 S	151° 08'.66 E
		33° 50'.65 S	151° 08'.66 E

90 AUSTRALIA - TORRES STRAIT - Cook Reef - WreckHMAS *Mermaid* and HMAS *Paluma***Aus 842 [343/2015]**Insert depth, 13_gm, enclosed by danger circle with legend, *Wk* 10° 15'.87 S 141° 37'.78 E

Delete wreck 10° 15'.9 S 141° 38'.0 E

91* AUSTRALIA - TORRES STRAIT - Hockings Patches - DepthsHMAS *Benalla* and HMAS *Shepparton***Aus 301 [810/2016]**

Insert accompanying block 10° 45'.0 S 141° 32'.0 E

92 AUSTRALIA - NORTHERN TERRITORY - Darwin - Fishermans Wharf to Channel Island - Depths

Surrich Hydrographics

Aus 24 [1201/2016]

Insert contour, between 12° 27'.383 S 130° 51'.075 E

12° 27'.420 S 130° 51'.092 E

12° 27'.452 S 130° 51'.094 E

12° 27'.474 S 130° 51'.065 E

Delete contour, between 12° 27'.38 S 130° 51'.08 E

12° 27'.47 S 130° 51'.07 E

depth, 0₂m 12° 27'.44 S 130° 51'.09 E**Aus 25 [1201/2016]**

Insert contour, between 12° 27'.383 S 130° 51'.075 E

12° 27'.420 S 130° 51'.092 E

12° 27'.452 S 130° 51'.094 E

12° 27'.474 S 130° 51'.065 E

Delete contour, between 12° 27'.38 S 130° 51'.08 E

12° 27'.47 S 130° 51'.07 E

Aus 26 [1243/2016]

Insert contour, between 12° 27'.383 S 130° 51'.075 E

12° 27'.420 S 130° 51'.092 E

12° 27'.452 S 130° 51'.094 E

12° 27'.474 S 130° 51'.065 E

depth, 4_gm, enclosed by contour 12° 33'.324 S 130° 51'.448 E

Delete contour, between 12° 27'.38 S 130° 51'.08 E

12° 27'.47 S 130° 51'.07 E

depth, 6_gm 12° 33'.3 S 130° 51'.4 E**Aus 27 [1142/2016]**Insert depth, 4_gm, enclosed by contour 12° 33'.324 S 130° 51'.448 Edepth, 4_gm, enclosed by contour 12° 33'.656 S 130° 51'.658 E**Aus 28 [1200/2016]**

Insert contour, between 12° 27'.383 S 130° 51'.075 E

12° 27'.420 S 130° 51'.092 E

12° 27'.452 S 130° 51'.094 E

12° 27'.474 S 130° 51'.065 E

Delete contour, between 12° 27'.38 S 130° 51'.08 E

12° 27'.47 S 130° 51'.07 E

depth, 0₂m 12° 27'.44 S 130° 51'.09 E

93 AUSTRALIA - WESTERN AUSTRALIA - Busselton - Port Geographe Marina - Light buoy

Department of Transport WA Notice 16/2017

Aus 116 (plan, Port Geographe Marina) [55/2017]

Move	light buoy	33° 37'.68 S	115° 23'.32 E
	to	33° 37'.640 S	115° 23'.229 E

94 AUSTRALIA - WESTERN AUSTRALIA - Fremantle - Port limit

Australian Hydrographic Service

Aus 114 [1112/2016]

Insert	magenta dashed line with legend, <i>Fremantle Port Limit</i> , between	32° 08'.209 S	115° 45'.618 E
		32° 08'.514 S	115° 45'.616 E
	magenta dashed line, between	32° 08'.538 S	115° 45'.616 E
		32° 08'.714 S	115° 45'.614 E
		32° 08'.896 S	115° 45'.642 E
		32° 09'.051 S	115° 45'.701 E
		32° 09'.176 S	115° 45'.823 E
		32° 09'.196 S	115° 45'.893 E
		32° 09'.197 S	115° 45'.960 E
	magenta dashed line, between	32° 07'.917 S	115° 45'.089 E
		32° 07'.833 S	115° 45'.089 E

Aus 117 [55/2017]

Insert	magenta dashed line, between	32° 08'.209 S	115° 45'.618 E
		32° 08'.514 S	115° 45'.616 E
	magenta dashed line, between	32° 08'.538 S	115° 45'.616 E
		32° 08'.714 S	115° 45'.614 E
		32° 08'.896 S	115° 45'.642 E
		32° 09'.051 S	115° 45'.701 E
		32° 09'.176 S	115° 45'.823 E
		32° 09'.196 S	115° 45'.893 E
		32° 09'.197 S	115° 45'.960 E
	magenta dashed line, between	32° 03'.929 S	115° 40'.089 E
		32° 03'.000 S	115° 39'.427 E
Delete	magenta dashed line, between	32° 03'.93 S	115° 40'.09 E
		32° 03'.00 S	115° 39'.24 E

95 AUSTRALIA - WESTERN AUSTRALIA - North West Cape - Depth northwestwards

BHP Billiton Petroleum Pty Ltd

Aus 328 [58/2017]

Replace	depth, 40m, with depth, 496m	21° 26'.9 S	113° 49'.5 E
---------	------------------------------	-------------	--------------

Aus 329 [53/2017]

Replace	depth, 40m, with depth, 496m	21° 26'.9 S	113° 49'.5 E
---------	------------------------------	-------------	--------------

Aus 4723 (INT 723) [1146/2016]

Replace	depth, 40m, with depth, 496m	21° 26'.9 S	113° 49'.5 E
---------	------------------------------	-------------	--------------

Aus 4725 (INT 725) [1069/2016]

Replace	depth, 40m, with depth, 496m	21° 26'.9 S	113° 49'.5 E
---------	------------------------------	-------------	--------------

96 AUSTRALIA - WESTERN AUSTRALIA - Oyster Harbour - Beacon

Department of Transport WA Notice WA1083/2/14

Aus 110 (inset, Oyster Harbour) [815/2016]

Delete	beacon	34° 57'.98 S	117° 57'.67 E
--------	--------	--------------	---------------

97	AUSTRALIA - SOUTH AUSTRALIA - Kangaroo Island - American River - Light beacon		
	Department of Planning, Transport and Infrastructure SA		
Aus 129	[705/2016]		
Replace	light beacon with port lateral light beacon, <i>Fl.4s 5M Entrance</i> , without topmark	35° 46'.7 S	137° 47'.9 E
Aus 485	[61/2017]		
Amend	light range to 5M	35° 46'.7 S	137° 47'.9 E
Aus 780	[705/2016]		
Amend	light range to 5M	35° 46'.7 S	137° 47'.9 E
98	AUSTRALIA - SOUTH AUSTRALIA - Venus Bay - Depth		
	HydroSurvey Australia		
Aus 121 (plan, Venus Bay)	[455/2016]		
Insert	depth, 6 ₅ m, and extend contour S to enclose	33° 14'.136 S	134° 39'.393 E
99	AUSTRALIA - SOUTH AUSTRALIA - Yarraville Shoals - Depth		
	HydroSurvey Australia		
Aus 778 (plan, Yarraville Shoals)	[61/2017]		
Insert	depth, 19 ₈ m, and extend contour E to enclose	33° 16'.27 S	137° 32'.42 E
100	AUSTRALIA - VICTORIA - Hogan Group - Long Islet - Depth		
	HMAS <i>Leeuwin</i>		
Aus 148 (plan, Hogan Group)	[1263/2013]		
Insert	depth, 12m, enclosed by contour	39° 12'.317 S	147° 00'.633 E
Aus 802	[394/2016]		
Insert	depth, 12m, enclosed by contour	39° 12'.32 S	147° 00'.63 E
Delete	depth, 33m	39° 12'.4 S	147° 00'.4 E
101*	AUSTRALIA - VICTORIA - Port Phillip - Sorrento - Lights		
	Former Notice - 622(T)/2016 is cancelled Parks Victoria Notice 315/2016		
Aus 143	[12/2017]		
Amend	light to <i>Iso.Bu.8s</i>	38° 20'.2 S	144° 44'.7 E
Aus 143 (plan, Sorrento)	[12/2017]		
Insert	accompanying block	38° 20'.1 S	144° 44'.7 E
Aus 158	[12/2017]		
Insert	accompanying block	38° 20'.1 S	144° 44'.5 E
102	AUSTRALIA - VICTORIA - Port Phillip - Brighton - Light buoy westwards		
	Parks Victoria Notice 378/2016		
Aus 155	[1251/2016]		
Replace	light buoy with special conical light buoy, <i>Fl(3)Y.10s R2</i> , without topmark	37° 54'.54 S	144° 56'.34 E
103	AUSTRALIA - VICTORIA - Port Phillip - Yarra River - Bolte Bridge - Light		
	Australian Hydrographic Service		
Aus 154	[1151/2016]		
Amend	light to <i>Fl(2)R.5s No56</i>	37° 49'.09 S	144° 55'.90 E

104 AUSTRALIA - VICTORIA - TASMANIA - Venus Bay to Stanley - Anchoring prohibited area

Australian Hydrographic Service

Aus 178 (plan, Stanley Harbour) [NE 18/12/2015]

Insert	anchoring prohibited limit, between	40° 45'.919 S	145° 18'.488 E
		40° 46'.384 S	145° 18'.777 E
		40° 46'.217 S	145° 19'.160 E

Aus 487 [1119/2016]

Insert	anchoring prohibited limit, between	38° 39'.54 S	145° 40'.95 E
		38° 40'.36 S	145° 41'.22 E
		38° 44'.00 S	145° 40'.77 E
		39° 14'.00 S	145° 35'.04 E
		40° 43'.68 S	145° 18'.44 E
		40° 44'.12 S	145° 17'.37 E
	anchoring prohibited limit, between	38° 38'.35 S	145° 43'.33 E
		38° 40'.15 S	145° 43'.93 E
		38° 44'.42 S	145° 43'.37 E
		39° 11'.61 S	145° 38'.37 E
		39° 13'.42 S	145° 38'.52 E
		39° 14'.38 S	145° 37'.89 E
		40° 43'.41 S	145° 21'.17 E
		40° 44'.51 S	145° 21'.27 E
		40° 45'.59 S	145° 20'.60 E
		40° 46'.38 S	145° 18'.78 E
		40° 45'.92 S	145° 18'.49 E

Aus 790 [354/2016]

Insert	anchoring prohibited limit, between	40° 44'.12 S	145° 17'.37 E
		40° 43'.68 S	145° 18'.44 E
		40° 07'.68 S	145° 25'.10 E
	anchoring prohibited limit, between	40° 07'.68 S	145° 27'.88 E
		40° 43'.41 S	145° 21'.17 E
		40° 44'.51 S	145° 21'.27 E
		40° 45'.59 S	145° 20'.60 E
		40° 46'.38 S	145° 18'.78 E
		40° 45'.92 S	145° 18'.49 E

Aus 801 [11/2017]

Insert	anchoring prohibited limit, between	38° 39'.54 S	145° 40'.95 E
		38° 40'.36 S	145° 41'.22 E
		38° 44'.00 S	145° 40'.77 E
		39° 11'.47 S	145° 35'.53 E
	anchoring prohibited limit, between	39° 11'.47 S	145° 38'.40 E
		38° 44'.42 S	145° 43'.37 E
		38° 40'.15 S	145° 43'.93 E
		38° 38'.35 S	145° 43'.33 E

105 AUSTRALIA - TASMANIA - Mercury Passage - Marine farms

Australian Hydrographic Service

Aus 170 [561/2016]

Replace	legend Shellfish Beds (see Note) with legend <i>Marine Farms</i> (see Note)	42° 35'.3 S	148° 00'.3 E
Delete	note, SHELLFISH BEDS	42° 37'.8 S	147° 55'.0 E

Aus 766 [1307/2015]

Replace	legend Shellfish Beds (see Note) with legend <i>Marine Farms</i> (see Note)	42° 35'.3 S	148° 00'.2 E
Delete	note, SHELLFISH BEDS	41° 39'.5 S	148° 06'.0 E

Aus 797 [1254/2016]

Insert	accompanying note	42° 35'.7 S	148° 46'.0 E
Replace	legend Shellfish Beds (see Note) with legend <i>Marine Farms</i> (see Note)	42° 35'.3 S	148° 00'.2 E
Delete	note, SHELLFISH BEDS	42° 31'.8 S	148° 46'.0 E

106 AUSTRALIA - TASMANIA - Robbins Passage - Marine farms

Australian Hydrographic Service

Aus 790 [104/2017]

Insert	accompanying note	40° 20'.0 S	145° 27'.0 E
Replace	legend Shellfish Beds (see Note) with legend <i>Marine Farms</i> (see Note)	40° 43'.7 S	145° 03'.0 E
Delete	note, SHELLFISH BEDS	40° 20'.0 S	145° 32'.5 E

107 AUSTRALIA - TASMANIA - Smithton - Estuary and River Entrance

Australian Hydrographic Service

Aus 178 (plan, Smithton) [104/2017]

Insert	legend <i>Estuary and River Entrances</i> (see Note), centred on accompanying note	40° 46'.93 S	145° 07'.00 E
		40° 49'.9 S	145° 08'.8 E

108(T)/2017 AUSTRALIA - NEW SOUTH WALES - NEW ZEALAND - FIJI - SAMOA - Survey operations
EGS Survey Pty Ltd

MV *Geo Resolution* is conducting survey operations between the following positions:

33° 54'.95 S 151° 16'.09 E
 33° 54'.95 S 151° 16'.23 E
 33° 54'.70 S 151°16'.54 E
 33° 54'.53 S 151°17'.43 E
 33° 54'.76 S 151°18'.48 E
 34° 14'.09 S 153°26'.93 E
 33° 59'.75 S 153°59'.67 E
 33° 36'.23 S 156°23'.14 E
 33° 41'.91 S 156°40'.35 E
 32° 39'.06 S 160°10'.60 E
 32° 23'.59 S 160°22'.34 E
 28° 21'.03 S 166°44'.41 E
 27° 58'.79 S 168°07'.17 E
 28° 02'.96 S 168°29'.61 E
 25° 58'.64 S 172°39'.63 E
 21° 32'.71 S 178°24'.46 E
 19° 58'.12 S 180°00'.00 E
 4° 53'.62 S 167°57'.91 W;

and

36° 46'.95 S 174°47'.77 E
 36° 37'.23 S 174°59'.15 E
 36° 14'.71 S 174°59'.63 E
 35° 52'.29 S 175°01'.68 E
 35° 27'.11 S 175°12'.97 E
 34° 24'.92 S 175°40'.14 E
 31° 42'.51 S 175°47'.27 E
 31° 17'.03 S 175°45'.53 E
 29° 09'.43 S 174°30'.23 E
 26° 13'.80 S 172°14'.48 E.

Chart temporarily affected - Aus 197 - Aus 489 - Aus 808 - Aus 4060 (INT 60) - Aus 4601 (INT 601) - Aus 4602 (INT 602) - Aus 4604 (INT 604) - Aus 4643 (INT 643)

109(T)/2017 AUSTRALIA - QUEENSLAND - Great Sandy Strait - Long Middle Bank - Light beacon unlit
Maritime Safety Queensland Notice 509(T)/2016

The starboard lateral light beacon, *Fl.G.6s* (25° 15'.97 S 152° 58'.28 E), is unlit.

Chart temporarily affected - Aus 241 - Aus 817

110(T)/2017 AUSTRALIA - QUEENSLAND - Hay Point - Obstruction
Maritime Safety Queensland Notice 38(T)/2017

Anchorage N26 (21° 10'.01 S 149° 26'.00 E) is closed due to a lost anchor.

Chart temporarily affected - Aus 249 - Aus 823

111(T)/2017 AUSTRALIA - QUEENSLAND - Moreton Bay - Victoria Point - Beacon destroyed
Maritime Safety Queensland

The beacon (27° 34'.83 S 153° 19'.14 E) has been destroyed.

Mariners are advised to navigate with caution in the area.

Chart temporarily affected - Aus 236

112(T)/2017 AUSTRALIA - QUEENSLAND - Moreton Bay - North Stradbroke Island - Canalpin - Wreck
Maritime Safety Queensland Notice 33(T)/2017

A wreck marked by a special light buoy, *Fl.Y.2-5s*, exists in position 27° 34'.41 S 153° 24'.56 E.

Mariners are advised to navigate with caution in the area.

Chart temporarily affected - Aus 236

113(T)/2017 AUSTRALIA - QUEENSLAND - Pioneer Rocks - Light beacon unlit
Maritime Safety Queensland Notice 16(T)/2017

The isolated danger light beacon, *Fl(2)6s 5m* (20° 13'.61 S 148° 45'.43 E), is unlit; an isolated danger light buoy, *Fl(2)6s*, exists in position 20° 13'.58 S 148° 45'.46 E.

Chart temporarily affected - Aus 252 - Aus 253 - Aus 824 - Aus 825

114(T)/2017 AUSTRALIA - QUEENSLAND - Rattlesnake Island - Live firing
Maritime Safety Queensland Notice 30(T)/2017

Live firing activities will be conducted within a 5M radius of position 19° 02'.45 S 146° 36'.72 E from 6 February to 19 February 2017.

Mariners are advised to navigate with caution in the area.

Chart temporarily affected - Aus 256 - Aus 827

115(T)/2017 AUSTRALIA - QUEENSLAND - Shute Harbour - The Beak - Light unlit
Maritime Safety Queensland Notice 3(T)/2017

The light, *Fl.WR.4s 19m 5M* (20° 16'.77 S 148° 48'.08 E), is unlit.

Chart temporarily affected - Aus 252 - Aus 253 - Aus 269 - Aus 824 - Aus 825

116(T)/2017 AUSTRALIA - WESTERN AUSTRALIA - Mullaloo - Light buoy
Former Notice - 154(T)/2016 is cancelled
MetOcean Engineers

Cancel this notice on receipt.

Chart formerly affected - Aus 754

117(T)/2017 AUSTRALIA - WESTERN AUSTRALIA - Port Hedland - Drilling operations

Pilbara Ports Authority Notice PH3(T)/2017

Jack-up barge *Sealift 5* and support vessels are conducting drilling operations in the following positions:

20° 09'.94 S 118° 29'.54 E
 20° 09'.90 S 118° 29'.83 E
 20° 09'.81 S 118° 29'.58 E
 20° 09'.81 S 118° 29'.63 E
 20° 09'.76 S 118° 29'.53 E
 20° 09'.76 S 118° 29'.68 E
 20° 09'.67 S 118° 29'.73 E
 20° 09'.65 S 118° 29'.96 E
 20° 09'.58 S 118° 29'.78 E
 20° 09'.49 S 118° 29'.53 E
 20° 09'.44 S 118° 29'.82 E
 20° 05'.80 S 118° 27'.03 E
 20° 03'.91 S 118° 25'.04 E
 20° 03'.35 S 118° 25'.09 E
 20° 01'.68 S 118° 25'.29 E
 20° 00'.79 S 118° 25'.72 E
 19° 59'.61 S 118° 26'.18 E.

Vessels will monitor VHF Ch 12.

Mariners are advised to navigate with caution in the area.

Chart temporarily affected - Aus 52 - Aus 53**118(T)/2017 AUSTRALIA - WESTERN AUSTRALIA - Wyndham Wharf - Light buoy off station**

Department of Transport WA Notice 21/2017

The light buoy, *Q(2)G.5s Raft* (15° 27'.10 S 128° 05'.70 E), is off station.

Chart temporarily affected - Aus 32**119(T)/2017 AUSTRALIA - VICTORIA - Port Campbell - Survey operations southwestwards**

Maritime Safety Victoria Notice 39(T)/2017

Survey operations and ROV pipeline inspections are in progress in the area bounded by the following positions:

38° 39'.0 S 142° 37'.0 E
 38° 49'.0 S 142° 37'.0 E
 38° 49'.0 S 142° 46'.0 E
 38° 39'.0 S 142° 46'.0 E.

MV *Silver Star* is on site and will display appropriate lights and shapes and will monitor VHF Ch 16.

Mariners are advised to navigate with caution in the area.

Chart temporarily affected - Aus 349 - Aus 787**120(T)/2017 AUSTRALIA - VICTORIA - Port Phillip - Yarra River - Bolte Bridge - Light beacon destroyed**

Victorian Ports Corporation Notice 322(T)/2016

The starboard lateral light beacon, *Fl(2)G.5s* (37° 49'.14 S 144° 55'.91 E) has been destroyed; a starboard lateral light buoy, *Fl(2)G.5s*, exists in situ.

Chart temporarily affected - Aus 154

121(T)/2017 AUSTRALIA - BASS STRAIT - Ninety Mile Beach - Survey operations

Maritime Safety Victoria Notice 40(T)/2017

Survey operations and ROV pipeline inspections are in progress in the area bounded by the following positions:

38° 25'.9 S 147° 07'.5 E

38° 36'.0 S 147° 19'.8 E

38° 48'.4 S 148° 30'.0 E

38° 37'.0 S 148° 37'.1 E.

MV *Outer Limit* is on site and will display appropriate lights and shapes and will monitor VHF Ch 16.

Mariners are advised to navigate with caution in the area.

Chart temporarily affected - Aus 357 - Aus 487**122(T)/2017 AUSTRALIA - TASMANIA - Georges Bay - The Barway - Light buoy destroyed**

Marine and Safety Tasmania Notice M18/2017

The wreck buoy (41° 16'.24 S 148° 20'.07 E) has been destroyed.

Chart temporarily affected - Aus 169

II

HYDROGRAPHIC REPORTS

NIL

III

NAVIGATION WARNINGS

The Australian Hydrographic Service will no longer compile Section III of the Australian Notices to Mariners. For the most up to date navigation warnings please refer to:

AMSA Navigation Warnings

<http://amsa.gov.au/search-and-rescue/distress-and-safety-comms/msi/msi-email/index.asp>

New Zealand Notices to Mariners (Navarea XIV warnings)

<http://www.linz.govt.nz/sea/maritime-safety/notices-mariners>

To accompany Australian Notice to Mariners 105/2017

MARINE FARMS

Marine farms, which may be floating or fixed structures and their associated moorings should be avoided. The farms are generally marked by buoys or beacons, which may be lit. Their charted positions are approximate.

Note for chart Aus 797

To accompany Australian Notice to Mariners 107/2017

ESTUARY AND RIVER ENTRANCES

The crossing of coastal bars and entry to rivers and estuaries is potentially dangerous. Bars and entrances are dynamic in nature, hence the depth and preferred approach may vary. Leading beacons and other navigational aids may not always indicate the best approach. If mariners are unsure of the condition at a particular bar or entrance, local information should be sought prior to crossing.

Note for chart Aus 178

To accompany Australian Notice to Mariners 106/2017

MARINE FARMS

Marine farms, which may be floating or fixed structures and their associated moorings should be avoided. The farms are generally marked by buoys or beacons, which may be lit. Their charted positions are approximate.

Note for chart Aus 790

Websites:	www.tmr.qld.gov.au www.msq.qld.gov.au
-----------	--

Page 236

Brisbane Telephone: +61 7 3632 3500 Fax: +61 7 3632 7571 Email: RHMBrisbane@msq.qld.gov.au	Townsville / Abbot Point / Lucinda Telephone: +61 7 4421 8100 Fax: +61 7 4721 2028 Email: RHMTownsville@msq.qld.gov.au
Gladstone / Bundaberg / Port Alma Telephone: +61 7 4971 5200 Fax: +61 7 4971 5243 Email: Gladstone.RHM@msq.qld.gov.au	Cairns / Weipa / Mourilyan / Cooktown / Port Douglas / Cape Flattery / Thursday Island / Karumba Telephone: +61 7 4052 7400 Fax: +61 7 4052 7451 Email: RHMCairns@msq.qld.gov.au
Mackay / Hay Point Telephone: +61 7 4944 3700 Email: mackaymarine@msq.qld.gov.au	Gold Coast Telephone: +61 7 5585 1810 Fax: +61 7 5585 1818 Email: msq.goldcoast.reception@msq.qld.gov.au

Page 237

Website:	www.qld.gov.au/transport/boating/notices/about/
----------	--

Page 237

Bundaberg, QLD (24° 46'S, 152° 23'E)	
UN/LOCODE: AU BDB	
Paper charts:	Aus 243, 242
AusENC cells:	AU5242P0, AU425152
Security Regulated Port:	Yes
Port Authority:	Gladstone Port Corporation
Website:	www.gpcl.com.au
Email:	info@portofbundaberg.com.au
Telephone:	+61 7 4130 2200
Port Harbour Control	Gladstone VTS
Telephone:	+61 7 4971 5208
Email:	vtsgladstone@msq.qld.gov.au
Pilotage:	Compulsory
Bundaberg Pilots	
Telephone:	+61 7 4976 8201
Fax:	+61 7 4976 8250
Pilot Boarding Ground:	24° 45.6'S, 152° 29.7'E
Communication	"Bundaberg Harbour Control"
Call up, emergencies:	VHF Ch 16
VTS:	VHF Ch 13
Operations:	VHF Ch 13, 82
Pilots and Tugs:	VHF Ch 13
Pilot Boat:	VHF Ch 16
Notice of ETA:	ETA and maximum draught to Harbour Master - Gladstone 48 hours prior to vessels arrival

Page 238

Gladstone, QLD (23° 50'S, 151° 15'E)	
UN/LOCODE: AU GLT	
Paper charts:	Aus 244, 245, 246, 270, 271
AusENC cells:	AU5244X5, AU424151
Security Regulated Port:	Yes
Port Authority:	Gladstone Ports Corporation
Website:	www.gpcl.com.au
Email:	info@gpcl.com.au
Telephone:	+61 7 4976 1333
Vessel Traffic Service	Gladstone VTS
Telephone:	+61 7 4971 5208
Email:	vtsgladstone@msq.qld.gov.au
Pilotage:	Compulsory
Pilot:	Gladstone Pilots
Telephone:	+61 7 4976 8201
Pilot Boarding Grounds:	Alpha) 23° 51.00'S, 151° 31.50'E Bravo) 23° 51.90'S, 151° 32.70'E Charlie) 23° 53.00'S, 151° 33.00'E Delta) 23° 55.00'S, 151° 31.00'E LNG) 23°50.09' S, 151° 34.67'E
Communication:	"Gladstone VTS"
Call up, emergencies:	VHF Ch 16
Port Operations:	VHF Ch 13
Pilot boat /helicopter:	VHF Ch 10
Tugs:	VHF Ch 08, 12
Notice of ETA:	48 hours notice prior to vessels arrival
Website link to Port Handbook:	www.msq.qld.gov.au/Shipping/Port-procedures/Port-procedures-gladstone.aspx

Page 239

Hay Point, QLD (21° 16'S, 149° 18'E)	
UN/LOCODE: AU HPT	
Paper charts:	Aus 250, 249
AusENC cells:	AU5250P2, AU422149
Security Regulated Port:	Yes
Port Authority:	North Queensland Bulk Ports Corporation
Website:	www.nqbp.com.au
Email:	info@nqbp.com.au
Telephone:	+61 7 4955 8155
Vessel Traffic Service call:	Hay Point VTS
Telephone:	+61 7 4956 3489 or +61 7 4956 3254
Email:	vtshaypoint@msq.qld.gov.au
Pilotage:	Compulsory
Pilot:	Duty Pilot
Telephone:	+61 7 4942 8320
Ordering:	24 hours in advance
Pilot Boarding Grounds:	Bravo) 21° 13.50'S, 149° 20.70'E Charlie) 21° 17.35'S, 149° 22.50'E
Communication:	"Hay Point VTS"
Call up, emergencies:	VHF Ch 16
Operations / VTS:	VHF Ch 10
Pilots / tugs HPS	VHF Ch 08
Pilots / tugs DBCT	VHF Ch 12
Notice of ETA:	48 Hours
For more information:	www.msq.qld.gov.au/Shipping/Port-procedures/Port-procedures-hay-point.aspx

Page 239

Esperance, WA (33° 52'S, 121° 53'E)	
UN/LOCODE: AU EPR	
Paper chart:	Aus 119
AusENC cells:	AU5119P1, AU434121, AU434122
Security Regulated Port:	Yes
Port Authority:	Southern Ports Authority
Website:	www.epsl.com.au
Email:	enquiries.esperance@southernports.com.au
Telephone:	+61 8 9072 3344
Fax:	+61 8 9071 1312
Pilot:	
Telephone:	+61 8 9072 3344
Fax:	+61 8 9071 1312
Email:	pilots@epsl.com.au
Pilotage:	Compulsory > 150 GRT
Pilot Boarding Ground:	33° 54.22'S, 121° 55.52'E
Communication:	"Esperance Harbour"
Call up, emergencies :	VHF Ch 16
Port:	VHF Ch 16, 12
Pilots:	VHF Ch 16, 12
Notice of ETA:	7 days
For more information:	www.epsl.com.au/Marine-Information.asp

Page 256

Port Alma, (Rockhampton) QLD (23° 34'S, 150° 51'E)	
UN/LOCODE: AU PTL	
Paper chart:	Aus 265
AusENC cells:	AU5265P0, AU424150, AU424151
Security Regulated Port:	Yes
Port Authority:	Gladstone Ports Corporation
Website:	www.gpcl.com.au
Email:	info@gpcl.com.au
Telephone:	+61 7 4934 6931
Port Operator:	Gladstone VTS
Telephone:	+61 7 4971 5208
Fax:	+61 7 4971 5520
Email:	vtsgladstone@msq.qld.gov.au
Pilotage:	Compulsory
Pilot:	Gladstone Pilots
Telephone:	+61 7 4976 8201 +61 7 4976 8250
Pilot Boarding Ground:	23° 24.40'S, 151° 00.94'E
Communication:	"Gladstone VTS"
Call up, emergencies:	VHF Ch 16
Port Operations:	VHF Ch 16, 13
Port Alma Wharves:	VHF Ch 06
Notice of ETA:	48 hours prior to arrival
For more information:	www.msq.qld.gov.au/Shipping/Port-procedures/Port-procedures-port-alm.aspx

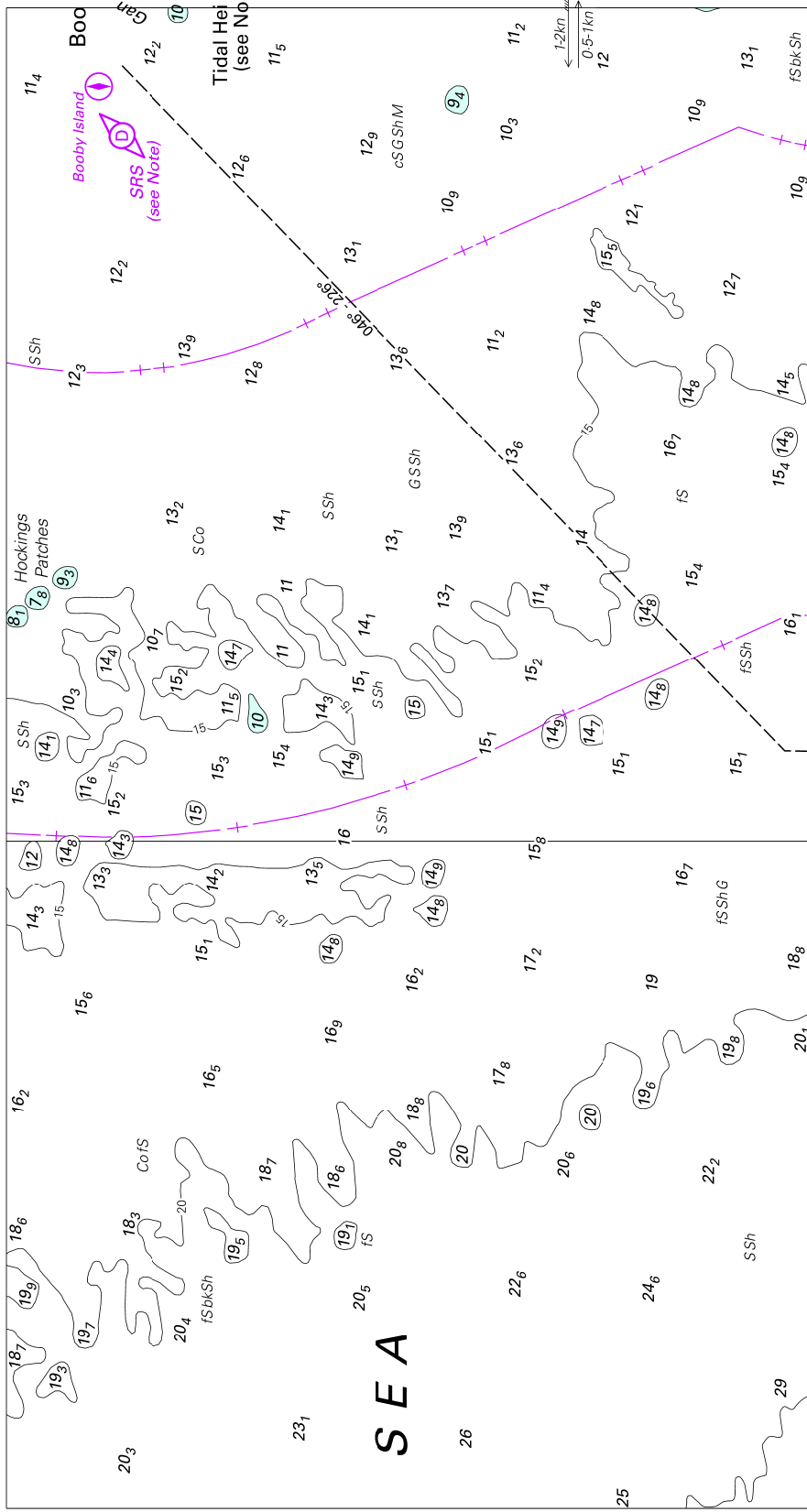
Page 240

Port Walcott, WA (20° 35'S, 117° 11'E)	
UN/LOCODE: AU PWL	
Paper charts:	Aus 55, 56
AusENC cells:	AU5056P0, AU421117
Security Regulated Port:	Yes
Port Authority:	Department of Transport WA
Website:	www.transport.wa.gov.au/marine
Harbour Master's office:	+61 8 9435 7692
Fax:	+61 8 9435 7807
Deputy Harbour Master:	+61 8 9435 7533
Operator:	Rio Tinto
Telephone:	+61 8 9186 1487
Fax:	+61 8 9143 5804
Email:	marine.operations@riotinto.com
Pilot:	Port Walcott Pilots
Telephone:	+61 8 9187 1329
Email:	pw@mswapilots.com.au
Pilotage:	Compulsory > 500 GRT
Pilot Boarding Ground:	Anchorage position No. 3 20° 32.4'S 117° 15.00' E
Communication	
Call up, emergencies:	VHF Ch 16
Port:	VHF Ch 14
Helicopter:	VHF Ch 09
Tugs:	VHF Ch 09, 10
Notice of ETA:	7 days

Page 257

Hobart, TAS (42° 52'S, 147° 19'E)	
UN/LOCODE: AU HBA	
Paper chart:	Aus 172
AusENC cells:	AU5172P0, AU443147
Security Regulated Port:	Yes
Port Authority:	Tasmanian Ports Corporation
Website:	www.tasports.com.au
Email:	secretary@tasports.com.au
Telephone:	+61 3 6235 1000 1300 366 742 (AUST only)
Pilots and Port	
Telephone:	+61 3 6380 3075
Fax:	+61 3 6380 3043
Pilotage:	Compulsory >35m LOA
Pilot Boarding Grounds:	42° 55.5'S, 147° 23.4'E 43° 03.7'S, 147° 23.4'E 43° 26.3'S, 147° 03.8'E
Communication:	"Hobart VTS"
Call up, emergencies:	VHF Ch 16
Pilot:	VHF Ch 12
Port:	VHF Ch 06, 08, 12, 67
Notice of ETA:	24 hours
For more information:	www.tasports.com.au/port_services/port_information.html

To accompany Australian Notice to Mariners 91/2017

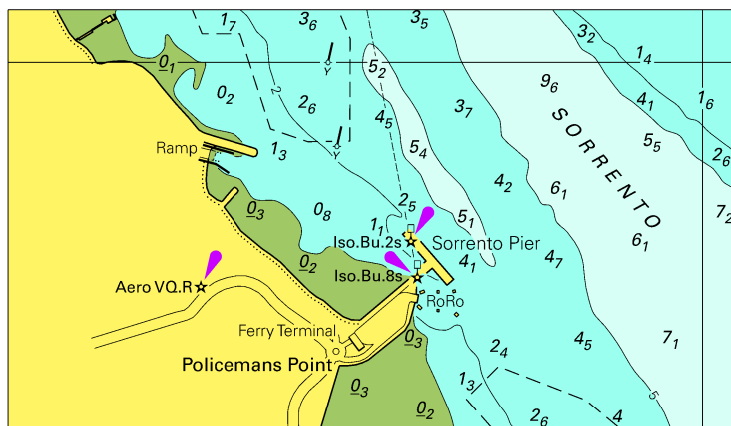


Block for Chart Aus 301

© Commonwealth of Australia 2017

(216.6 x 116.0mm)

To accompany Australian Notice to Mariners 101/2017

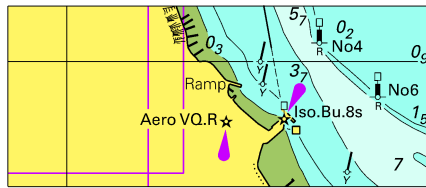


© Commonwealth of Australia 2017

Block for Chart Aus 143

(96.6 x 55.3mm)

To accompany Australian Notice to Mariners 101/2017



© Commonwealth of Australia 2017

Block for Chart Aus 158 (56.2 x 23.8mm)