



# AUSTRALIAN NOTICES TO MARINERS

## Notices 1054 - 1104



*The Hydrographer and Staff of the Australian Hydrographic Service  
wish all users of Australian Navigational Products a Merry Christmas,  
a Happy New Year and safe, successful voyages in 2018.*



Published fortnightly by the Australian Hydrographic Service

Australian Notices to Mariners are the authority for correcting charts and publications published by the Australian Hydrographic Service covering Australia, Papua New Guinea, Solomon Islands, Australian Antarctic Territory and Timor-Leste.

Commodore B.K. BRACE RAN  
*Hydrographer of Australia*

### SECTIONS.

- I. **Australian Notices to Mariners, including blocks and notes.**
- II. **Hydrographic Reports.**
- III. **Navigational Warnings.**

### SUPPLEMENTS.

- I. **Tracings**
- II. **Cumulative List of Australian Notices to Mariners.**
- III. **Cumulative List of Temporary and Preliminary Australian Notices to Mariners.**
- IV. **Temporary and Preliminary Notices in force.**
- V. **Amendments to Admiralty List of Lights and Fog Signals (Vol K), Radio Signals (NP 281(2), 282, 283(2), 285, 286(4)) and Sailing Directions (NP 9, 13, 14, 15, 33, 34, 35, 36, 39, 44, 51, 60, 61, 62, 100, 136).**

## IMPORTANT NOTICE

This edition of Notices to Mariners includes all significant information affecting AHS products which the AHS has become aware of since the last edition. All reasonable efforts have been made to ensure the accuracy and completeness of the information, including third party information, on which these updates are based. The AHS regards third parties from which it receives information as reliable, however the AHS cannot verify all such information and errors may therefore exist. The AHS does not accept liability for errors in third party information.

---

## GENERAL INSTRUCTIONS

The substance of these notices should be inserted on the charts affected.

Bearings are referred to the true compass and are reckoned clockwise from North; those relating to lights are given as seen by an observer from seaward.

Positions quoted in notices relate to WGS84 which is the horizontal datum for all charts produced by the Australian Hydrographic Service.

The range quoted for a light is its nominal range.

Depths are with reference to the chart datum of each chart. Heights are above mean high water springs or mean higher high water, as appropriate.

The capital letter (P) or (T) after the number of any notice denotes a preliminary or temporary notice respectively, which are contained separately at the end of the permanent notices.

---

## REPORTING OF DANGERS

Mariners are particularly requested to notify the AUSTRALIAN HYDROGRAPHIC SERVICE, Locked Bag 8801 Wollongong, NSW 2500 (Fax 02-4223 6599, e-mail [datacentre@hydro.gov.au](mailto:datacentre@hydro.gov.au) or, alternatively by filling in and submitting the [Hydrographic Notes](#) forms located on the web site – [www.hydro.gov.au](http://www.hydro.gov.au)), immediately on the discovery of new dangers or suspected dangers to navigation. For changes or defects in aids to navigation notify AusSAR (Fax 02-6230 6868 or email [rccaus@amsa.gov.au](mailto:rccaus@amsa.gov.au)).

---

## AUTHORISED USE

Copies of Australian notices are available free of charge from the Australian Hydrographic Service (AHS) website ([www.hydro.gov.au](http://www.hydro.gov.au)) and through the eNotices (email) service ([www.hydro.gov.au/enotices/enotices.htm](http://www.hydro.gov.au/enotices/enotices.htm)).

Individual Notices may be copied for the purpose of inserting Notice substance on official charts and publications. Paper copies may be printed by chart agents and distributed to customers on a cost recovery basis. Participating chart agents are listed on the AHS website as providing a 'Paper Notices to Mariners' service ([www.hydro.gov.au/webapps/jsp/agents/agents-list.jsp](http://www.hydro.gov.au/webapps/jsp/agents/agents-list.jsp)). Copies of the notices may not be sold for profit without prior written agreement.

## NUMERICAL INDEX OF NOTICES TO MARINERS

### Edition No 25

Notices	Aus Chart, INT Chart, ENC Cell, AHP, BA Pubs
1054	Products - New Charts, New Editions, Withdrawn Charts
1055	Aus 222
1056	Aus 809
1057	Aus 610
1058	Aus 202
1059	Aus 255
1060	Aus 251, 824
1061	Aus 490, 819
1062	Aus 236, 237
1063	Aus 243
1064	Aus 490, 819
1065	Aus 830
1066	Aus 829, 830
1067	Aus 249
1068	Aus 250
1069	Aus 236
1070	Aus 235, 236
1071	Aus 828
1072	Aus 257
1073	Aus 256, 827
1074	Aus 257
1075	Aus 510
1076	Aus 521
1077	Aus 512
1078	Aus 509
1079	Aus 115
1080	Aus 72
1081	Aus 327
1082	Aus 777
1083	Aus 802
1084	Aus 157
1085	Aus 151
1086	Aus 151, 152
1087(T)	Aus 200, 202
1088(T)	Aus 237
1089(T)	Aus 236, 237
1090(T)	Aus 263, 264
1091(T)	Aus 249, 823
1092(T)	Aus 249, 250
1093(T)	Aus 256
1094(T)	Aus 814
1095(T)	Aus 236
1096(T)	Aus 28
1097(T)	Aus 319, 320
1098(T)	Aus 115
1099(P)	Aus 83, 332, 751
1100(T)	Aus 327, 4723, INT 723
1101(T)	Aus 777
1102(T)	Aus 141
1103(T)	Aus 169
1104(T)	Aus 790

## NUMERICAL INDEX OF CHARTS AFFECTED

### Edition No 25

Aus Chart	Notices	INT Chart	Notices
Aus 28	1096(T)	INT 723	1100(T)
Aus 72	1080		
Aus 83	1099(P)		
Aus 115	1079, 1098(T)		
Aus 141	1102(T)		
Aus 151	1085, 1086		
Aus 152	1086		
Aus 157	1084		
Aus 169	1103(T)		
Aus 200	1087(T)		
Aus 202	1058, 1087(T)		
Aus 222	1055		
Aus 235	1070		
Aus 236	1062, 1069, 1070, 1089(T), 1095(T)		
Aus 237	1062, 1088(T), 1089(T)		
Aus 243	1063		
Aus 249	1067, 1091(T), 1092(T)		
Aus 250	1068, 1092(T)		
Aus 251	1060		
Aus 255	1059		
Aus 256	1073, 1093(T)		
Aus 257	1072, 1074		
Aus 263	1090(T)		
Aus 264	1090(T)		
Aus 319	1097(T)		
Aus 320	1097(T)		
Aus 327	1081, 1100(T)		
Aus 332	1099(P)		
Aus 490	1061, 1064		
Aus 509	1078		
Aus 510	1075		
Aus 512	1077		
Aus 521	1076		
Aus 610	1057		
Aus 751	1099(P)		
Aus 777	1082, 1101(T)		
Aus 790	1104(T)		
Aus 802	1083		
Aus 809	1056		
Aus 814	1094(T)		
Aus 819	1061, 1064		
Aus 823	1091(T)		
Aus 824	1060		
Aus 827	1073		
Aus 828	1071		
Aus 829	1066		
Aus 830	1065, 1066		
Aus 4723	1100(T)		

**1054 AUSTRALIA - Products - New Charts, New Editions, Withdrawn Charts**

UKHO

**New Charts**

Chart	Title and Geographical limits	Scale	Publication Date	Remarks
NIL				

**New Electronic Navigation Chart (Aus ENC)**

Cell Name	Title	Publication Date	Remarks
NIL			

**New Editions and Withdrawn Charts**

Chart	Title	Scale	Publication Date	Remarks
NIL				

**Admiralty publication**

NP No	Title	Date	Remarks
NP284	Admiralty List of Radio Signals. Meteorological Observation Stations.	14/12/2017	The 2016/17 Edition is cancelled.

**Chart permanently withdrawn**

Charts listed above as withdrawn no longer meet chart carriage requirements and should be marked as "superseded" and replaced with the new chart/ new edition listed prior to passage through the area covered by the new chart.

When placing orders with a chart agent between notice of forthcoming edition and its publication, mariners should advise whether their order pertains to the current edition or the new edition.

For further details refer to the AHS website at [www.hydro.gov.au](http://www.hydro.gov.au) for new edition and new chart stock arrival information.

**1055 AUSTRALIA - NEW SOUTH WALES - Clarence River - Yamba - Depth**

Port Authority of New South Wales

**Aus 222 [NE 11/8/2017]**

Insert	depth, 2 <sub>6</sub> m, and extend contour E to enclose	29° 25'.641 S	153° 22'.193 E
Delete	depth, 3 <sub>3</sub> m	29° 25'.62 S	153° 22'.17 E

**1056 AUSTRALIA - NEW SOUTH WALES - Lake Macquarie Entrance - Moon Island - Light beacon**

NSW Roads and Maritime Services

**Aus 809 [241/2017]**

Replace	light, with east cardinal light beacon, VQ(3)5s 5M, with topmark	33° 05'.2 S	151° 40'.4 E
Delete	light sectors with legends, emanating from light beacon	33° 05'.2 S	151° 40'.4 E

**Aus 809 (plan, Lake Macquarie Entrance) [241/2017]**

Insert	east cardinal light beacon, VQ(3)5s 5M, with topmark	33° 05'.221 S	151° 40'.421 E
Delete	light, with emanating light sector and legend	33° 05'.21 S	151° 40'.40 E

**1057 AUSTRALIA - NEW SOUTH WALES - Lord Howe Island - Nav aids**  
NSW Roads and Maritime Services

**Aus 610 (plan, Lord Howe Island) [42/2017]**

Insert	starboard lateral light buoy, <i>Fl.G.3s</i> , without topmark	31° 31'.490 S	159° 02'.803 E
	port lateral light buoy, <i>Fl.R.3s</i> , without topmark	31° 32'.667 S	159° 04'.249 E
	port lateral light buoy, <i>Fl.R.3s</i> , without topmark	31° 33'.016 S	159° 04'.223 E
	rectangular orange daymark	31° 32'.938 S	159° 04'.531 E
	dashed line in a direction 248·2° for a distance of 510m, thence a continuous line for 1720m, with legend 68·2°, emanating from daymark	31° 32'.938 S	159° 04'.531 E
Replace	light buoy, with special cylindrical light buoy, <i>Fl.Y.2s</i> , without topmark	31° 31'.53 S	159° 03'.36 E
Delete	buoy	31° 31'.52 S	159° 02'.75 E

**Aus 610 (plan, The Lagoon (North)) [42/2017]**

Insert	starboard lateral light buoy, <i>Fl.G.3s</i> , without topmark	31° 31'.490 S	159° 02'.803 E
Replace	light buoy, with special cylindrical light buoy, <i>Fl.Y.2s</i> , without topmark	31° 31'.53 S	159° 03'.36 E
Delete	buoy	31° 31'.52 S	159° 02'.75 E
	depth, 1 <sub>2</sub> m	31° 31'.50 S	159° 02'.80 E

**Aus 610 (plan, The Lagoon (South)) [42/2017]**

Insert	port lateral light buoy, <i>Fl.R.3s</i> , without topmark	31° 32'.667 S	159° 04'.249 E
	port lateral light buoy, <i>Fl.R.3s</i> , without topmark	31° 33'.016 S	159° 04'.223 E
	rectangular orange daymark	31° 32'.938 S	159° 04'.531 E
	dashed line in a direction 248·2° for a distance of 510m, thence a continuous line for 1720m, with legend 68·2°, emanating from daymark	31° 32'.938 S	159° 04'.531 E

**1058 AUSTRALIA - NEW SOUTH WALES - Port Jackson - Mort Bay - Depth**  
UKHO

**Aus 202 [1008/2017]**

Delete	depth, 3 <sub>8</sub> m	33° 51'.38 S	151° 11'.36 E
--------	-------------------------	--------------	---------------

**1059 AUSTRALIA - QUEENSLAND - Abbott Point - Lights; navline**  
Maritime Safety Queensland Notice 463/2017

**Aus 255 [864/2016]**

Insert	light, <i>F.Bu</i> , with triangular topmark apex up	19° 53'.010 S	148° 04'.847 E
	light, <i>F.Bu</i> , with triangular topmark apex down	19° 53'.028 S	148° 04'.826 E
	dashed line in a direction 048° for a distance of 385m, thence a continuous line for 1470m, with legend 228°, emanating from light	19° 53'.028 S	148° 04'.826 E

**1060 AUSTRALIA - QUEENSLAND - Allonby Island - Wreck amended northeastwards**  
HS Blue

**Aus 251 [444/2017]**

Insert	legend, <i>ED</i>	20° 44'.00 S	149° 10'.73 E
--------	-------------------	--------------	---------------

**Aus 824 [955/2016]**

Insert	legend, <i>ED</i>	20° 44'.00 S	149° 10'.73 E
--------	-------------------	--------------	---------------

**1061 AUSTRALIA - QUEENSLAND - Black Head - Wreck amended**  
HS Blue

**Aus 490 [853/2017]**

Replace	wreck, 18m, with wreck, 21 <sub>7</sub> m	23° 40'.9 S	151° 25'.9 E
---------	---	-------------	--------------

**Aus 819 [495/2017]**

Replace	safe clearance wreck, 18m, with wreck, 21 <sub>7</sub> m	23° 40'.9 S	151° 25'.9 E
---------	--	-------------	--------------

**1062 AUSTRALIA - QUEENSLAND - Brisbane River - Inner Bar Reach - Light beacon withdrawn**

Maritime Safety Queensland Notice 488/2017

**Aus 236 [689/2017]**

Delete light beacon 27° 21'.6 S 153° 10'.4 E

**Aus 237 [278/2017]**

Delete light beacon 27° 21'.58 S 153° 10'.42 E

**1063 AUSTRALIA - QUEENSLAND - Bundaberg - Light buoy northeastwards moved**

Maritime Safety Queensland Notice 492/2017

**Aus 243 [952/2016]**Move light buoy to 24° 40'.35 S 152° 29'.96 E  
24° 40'.00 S 152° 30'.04 E**1064 AUSTRALIA - QUEENSLAND - Bustard Head - Wreck amended northeastwards**

HS Blue

**Aus 490 [1061/2017]**

Replace wreck, 25m, with wreck, 37m 23° 44'.9 S 151° 59'.3 E

**Aus 819 [1061/2017]**

Replace safe clearance wreck, 25m, with wreck, 37m 23° 44'.9 S 151° 59'.3 E

**1065 AUSTRALIA - QUEENSLAND - Fitzroy Island - Foul ground southwards**HMAS *Melville***Aus 830 [819/2017]**

Replace wreck, with # 17° 01'.8 S 145° 59'.4 E

**1066 AUSTRALIA - QUEENSLAND - Frankland Islands - Nomenclature**

Department of Natural Resources and Mines

**Aus 829 [1012/2017]**Amend legend to *Catalina Rock (37)* 17° 13'.3 S 146° 05'.4 E**Aus 830 [1065/2017]**Amend legend to *Catalina Rock (37)* 17° 13'.4 S 146° 06'.0 E**1067 AUSTRALIA - QUEENSLAND - Mackay - Pioneer River - Light beacon moved***Former Notice - 327(T)/2017 is cancelled*

Maritime Safety Queensland

**Aus 249 [817/2017]**Move light beacon to 21° 08'.48 S 149° 11'.72 E  
21° 08'.48 S 149° 11'.67 E**1068 AUSTRALIA - QUEENSLAND - Mackay - Depths**

Australian Hydrographic Service

**Aus 250 (plan, Mackay Harbour) [817/2017]**Insert depth, 2<sub>2</sub>m 21° 06'.078 S 149° 15'.026 E  
depth contour, between 21° 06'.106 S 149° 15'.053 E  
21° 06'.067 S 149° 15'.058 E  
21° 06'.068 S 149° 14'.994 E  
21° 06'.090 S 149° 14'.980 EDelete depth, 7<sub>2</sub>m 21° 06'.08 S 149° 15'.06 E  
depth, 3m 21° 06'.09 S 149° 15'.01 E  
contour, between 21° 06'.09 S 149° 14'.98 E  
21° 06'.11 S 149° 15'.05 E

**1069 AUSTRALIA - QUEENSLAND - Moreton Bay - Manly Boat Harbour - Depth**

Maritime Safety Queensland Notice 484/2017

**Aus 236 (plan, Manly Boat Harbour) [1062/2017]**Replace depth, 2<sub>2</sub>m, with depth, 2<sub>1</sub>m

27° 27'.03 S 153° 11'.62 E

**1070 AUSTRALIA - QUEENSLAND - Moreton Bay - North East Channel to Caloundra - Depths; nav aids***Former Notice - 255(P)/2017 is cancelled*

Maritime Safety Queensland Notice 494/2017

Note: Aus 814 and Aus 815 will be updated in due course.

**Aus 235 [726/2017]**Insert accompanying block A  
accompanying block B27° 00'.0 S 153° 21'.0 E  
26° 48'.0 S 153° 11'.0 E**Aus 236 [1069/2017]**

Insert accompanying block

27° 02'.0 S 153° 21'.0 E

**1071 AUSTRALIA - QUEENSLAND - Palm Passage - Light buoy withdrawn**

Australian Institute of Marine Science

**Aus 828 [894/2017]**

Delete light buoy

18° 18'.7 S 147° 09'.8 E

**1072 AUSTRALIA - QUEENSLAND - Townsville - Ross River Channel - Light buoy***Former Notice - 222(T)/2017 is cancelled*

Maritime Safety Queensland Notice 459/2017

**Aus 257 [854/2017]**Insert special cylindrical light buoy, *Fl. Y. 3s E4*, without topmark

19° 15'.174 S 146° 51'.030 E

**1073 AUSTRALIA - QUEENSLAND - Townsville - Cleveland Bay - Light buoy**

Maritime Safety Queensland Notice 496(T)/2017

**Aus 256 [897/2017]**Insert special pillar light buoy, *Fl. Y. 4s E1*, with topmark

19° 08'.24 S 146° 55'.81 E

**Aus 827 [820/2017]**Insert special pillar light buoy, *Fl. Y. 4s E1*, with topmark

19° 08'.24 S 146° 55'.81 E

**1074 AUSTRALIA - QUEENSLAND - Townsville - Light buoy amended***Former Notice - 672(T)/2016 is cancelled*

Maritime Safety Queensland Notice 474/2017

**Aus 257 [1072/2017]**Amend light to, *Fl. Y. 2-5s*

19° 14'.58 S 146° 50'.37 E

**1075 PAPUA NEW GUINEA - Bramble Haven - Depths; ZOC diagram**HMAS *Benalla* and HMAS *Shepparton***Aus 510 [NE 18/11/2016]**Insert accompanying block A  
accompanying block B11° 10'.0 S 151° 58'.0 E  
10° 57'.0 S 152° 56'.0 E**1076 PAPUA NEW GUINEA - Eve Shoal - Depths**HMAS *Benalla* and HMAS *Shepparton***Aus 521 [868/2015]**Insert accompanying block A  
accompanying block B08° 28'.0 S 148° 27'.0 E  
08° 40'.0 S 148° 41'.0 E

**1077 PAPUA NEW GUINEA - Panabwal Group - Depths; ZOC diagram**HMAS *Benalla* and HMAS *Shepparton***Aus 512 [1242/2016]**

Insert	accompanying block A	10° 54'.0 S	152° 01'.0 E
	accompanying block B	10° 14'.0 S	152° 58'.0 E

**1078 PAPUA NEW GUINEA - Panaman Island - Depths; ZOC diagram**HMAS *Benalla* and HMAS *Shepparton***Aus 509 [1242/2016]**

Insert	accompanying block A	11° 05'.0 S	151° 20'.0 E
	accompanying block B	11° 11'.0 S	151° 50'.0 E

**1079 AUSTRALIA - WESTERN AUSTRALIA - Bunbury - Depths**

Southern Ports Authority

**Aus 115 (plan, Port of Bunbury) [320/2017]**

Insert	accompanying block	33° 16'.8 S	115° 37'.9 E
--------	--------------------	-------------	--------------

**1080 AUSTRALIA - WESTERN AUSTRALIA - Exmouth Boat Harbour - Light buoy**

Department of Transport WA

**Aus 72 (plan, Exmouth Boat Harbour) [1018/2017]**

Move	light buoy	21° 57'.52 S	114° 08'.58 E
	to	21° 57'.508 S	114° 08'.569 E

**1081 AUSTRALIA - WESTERN AUSTRALIA - Rankin Bank - Well**

Woodside Energy Ltd

**Aus 327 [902/2017]**

Insert	danger circle with legend <i>Well</i> , centred on	19° 43'.00 S	115° 48'.92 E
--------	--	--------------	---------------

**1082 AUSTRALIA - SOUTH AUSTRALIA - Lucky Bay - Lights, lead line withdrawn**

Department of Planning, Transport and Infrastructure SA

**Aus 777 [974/2017]**

Delete	lights and emanating lead line with legend, 307.1°	33° 42'.4 S	137° 02'.1 E
--------	--	-------------	--------------

**Aus 777 (plan, Lucky Bay) [974/2017]**

Delete	light and emanating lead line with legend, 307.1°	33° 42'.41 S	137° 02'.10 E
	light	33° 42'.42 S	137° 02'.12 E

**1083 AUSTRALIA - VICTORIA - Hogan Group - Historic wrecks northwestwards**

Australian Hydrographic Service

**Aus 802 [100/2017]**

Insert	depth, 52m, enclosed by danger circle, with legend <i>Historic Wk</i> (see Note)	39° 11'.35 S	146° 52'.86 E
	depth, 51m, enclosed by danger circle, with legend <i>Historic Wk</i> (see Note)	39° 06'.50 S	146° 43'.81 E

**1084 AUSTRALIA - VICTORIA - Port Phillip - Point Wilson - Nav aids**

Marine Safety Victoria

**Aus 157 [1024/2017]**

Insert	triangular daymark, apex up	38° 05'.499 S	144° 30'.418 E
Delete	notice board	38° 05'.50 S	144° 30'.40 E
	notice board	38° 04'.25 S	144° 30'.77 E

**1085 AUSTRALIA - VICTORIA - Western Port - Rutherford Inlet to Tooradin Channel - Depths; nav aids**  
 Farren Group , Australian Hydrographic Service

Note: Aus 150 will be updated in due course.

**Aus 151 (inset, Continuation of Western Port) [786/2017]**

Insert	accompanying block	38° 14'.5 S	145° 21'.0 E
--------	--------------------	-------------	--------------

**1086 AUSTRALIA - VICTORIA - Western Port - Hastings Bight - Nav aids**

Australian Hydrographic Service

**Aus 151 [1085/2017]**

Amend	light beacon to, VQ(9)10s No15	38° 18'.74 S	145° 12'.66 E
-------	--------------------------------	--------------	---------------

Delete	topmark	38° 19'.49 S	145° 13'.31 E
--------	---------	--------------	---------------

**Aus 152 (plan, Hastings Bight) [786/2017]**

Insert	accompanying block	38° 18'.96 S	145° 12'.66 E
--------	--------------------	--------------	---------------

Delete	topmark	38° 19'.49 S	145° 13'.31 E
--------	---------	--------------	---------------

**1087(T)/2017 AUSTRALIA - NEW SOUTH WALES - Port Jackson - Blues Point - Drilling operations completed**

*Former Notice - 978(T)/2017 is cancelled*  
Port Authority of New South Wales

Cancel this notice on receipt.

**Chart formerly affected - Aus 200 - Aus 202****1088(T)/2017 AUSTRALIA - QUEENSLAND - Brisbane River - Luggage Point - Dredging operations**

Maritime Safety Queensland Notice 491(T)/2017

The dredge *Ken Harvey* and support vessels are conducting dredging operations in the Swing Basin in vicinity of position 27° 22'.86 S 153° 09'.43 E.

The dredge will display appropriate lights and shapes and will monitor VHF Ch 12 & Ch 16.

Mariners are advised to navigate with caution in the area.

**Chart temporarily affected - Aus 237****1089(T)/2017 AUSTRALIA - QUEENSLAND - Brisbane River - Inner Bar Reach - Light buoy**

Maritime Safety Queensland Notice 487(T)/2017

A special cylindrical light buoy, *Fl.Y.4s*, with topmark exists in position 27° 21'.58 S 153° 10'.42 E.

**Chart temporarily affected - Aus 236 - Aus 237****1090(T)/2017 AUSTRALIA - QUEENSLAND - Cairns - Trinity Inlet - Wreck**

Maritime Safety Queensland

A wreck marked by a special light buoy, *Fl.Y.2.5s*, exists in position 16° 56'.87 S 145° 47'.15 E.

**Chart temporarily affected - Aus 263 - Aus 264****1091(T)/2017 AUSTRALIA - QUEENSLAND - Hay Point - Obstruction removed**

*Former Notice - 110(T)/2017 is cancelled*  
Maritime Safety Queensland

Cancel this notice on receipt.

**Chart formerly affected - Aus 249 - Aus 823****1092(T)/2017 AUSTRALIA - QUEENSLAND - Hay Point - Dredging operations completed**

*Former Notice - 983(T)/2017 is cancelled*  
Maritime Safety Queensland

Cancel this notice on receipt.

**Chart formerly affected - Aus 249 - Aus 250****1093(T)/2017 AUSTRALIA - QUEENSLAND - Magnetic Island - Scientific instrument recovered**

*Former Notice - 1072(T)/2014 is cancelled*  
Maritime Safety Queensland

Cancel this notice on receipt.

**Chart formerly affected - Aus 256**

**1094(T)/2017 AUSTRALIA - QUEENSLAND - Point Lookout - Light buoy restored**

Former Notice - 922(T)/2017 is cancelled  
Maritime Safety Queensland Notice 492/2017

Cancel this notice on receipt.

**Chart formerly affected - Aus 814****1095(T)/2017 AUSTRALIA - QUEENSLAND - Pumicestone Channel - Marine farm; light buoy**

Maritime Safety Queensland notice 477(T)/2017

A marine farm, marked by a special light buoy, *Fl.Y.4s*, exists in position 27° 03'.04 S 153° 07'.97 E.

**Chart temporarily affected - Aus 236****1096(T)/2017 AUSTRALIA - NORTHERN TERRITORY - Darwin - Marine Supply Base - Light beacons unlit**

Department of Infrastructure, Planning and Logistics NT Notice 053(T)/2017

The light beacons, *Fl.G.2-5s MS9* (12° 29'.58 S 130° 53'.50 E) and *Fl.R.2-5s MS6* (12° 29'.65 S 130° 53'.38 E) are unlit.

**Chart temporarily affected - Aus 28****1097(T)/2017 AUSTRALIA - WESTERN AUSTRALIA - Browse Island - Scientific instrument**

Former Notice - 994(T)/2017 is cancelled  
Australian Maritime Safety Authority

Cancel this notice on receipt.

**Chart formerly affected - Aus 319 - Aus 320****1098(T)/2017 AUSTRALIA - WESTERN AUSTRALIA - Bunbury - Shoaling; light buoy**

Former Notice - 577(T)/2017 is cancelled  
Southern Ports Authority, Department of Transport WA Notice 126/2017

Shoaling marked by a special spar light buoy, *Fl.G.3s* (33° 18'.38 S 115° 38'.74 E), exists at the seaward end of berth No1 (33° 18'.36 S 115° 38'.74 E).

**Chart temporarily affected - Aus 115****1099(P)/2017 AUSTRALIA - WESTERN AUSTRALIA - Houtman Abrolhos - North Island to Pelsaert Island - Shoaling**  
Fugro LADS

In and around the islands and reefs of Houtman Abrolhos, between North Island (28° 17'.90 S 113° 35'.80 E) and Pelsaert Island (28° 56'.11 S 113° 58'.09 E), latest survey shows the existence of numerous shoaler depths than those charted.

The most significant shoals are as follows:

<i>Position</i>	<i>Depth</i>
28° 31'.19 S 113° 42'.04 E	8.5m
28° 40'.81 S 113° 50'.84 E	2.2m
28° 41'.12 S 113° 46'.57 E	9.6m
28° 41'.51 S 113° 50'.93 E	10.9m
28° 41'.90 S 113° 47'.09 E	5.0m
28° 42'.34 S 113° 51'.41 E	12.6m
28° 44'.33 S 113° 47'.60 E	7.6m
28° 44'.66 S 113° 47'.86 E	5.9m
28° 45'.22 S 113° 49'.21 E	18.4m
28° 45'.61 S 113° 48'.94 E	10.1m

Mariners are advised to navigate with caution in the area.

Charts will be updated in due course.

**Chart which will be affected - Aus 83 - Aus 332 - Aus 751**

**1100(T)/2017 AUSTRALIA - WESTERN AUSTRALIA - Rankin Bank - Drill rig**

*Former Notice* - 939(T)/2017 is cancelled  
Woodside Energy Ltd

Drill rig *Ocean Apex* is conducting drilling operations in position 19° 45'.48 S 115° 47'.13 E.

On or about 30 December 2017 the drill rig *Ocean Apex* will commence drilling operations in position 19° 43'.00 S 115° 48'.92 E.

**Chart temporarily affected - Aus 327 - Aus 4723 (INT 723)**

**1101(T)/2017 AUSTRALIA - SOUTH AUSTRALIA - Lucky Bay - Harbour works**

Department of Planning, Transport and Infrastructure SA

Works are in progress at Lucky Bay (33° 42'.45 S 137° 02'.18 E), and the area is restricted to authorised vessels only.

**Chart temporarily affected - Aus 777**

**1102(T)/2017 AUSTRALIA - VICTORIA - Port Phillip - Port Fairy - Dredging operations completed**

*Former Notice* - 1049(T)/2017 is cancelled  
Transport Safety Victoria Notice 333(T)/2017

Cancel this notice on receipt.

**Chart formerly affected - Aus 141**

**1103(T)/2017 AUSTRALIA - TASMANIA - Georges Bay - The Barway - Light buoy destroyed**

Marine and Safety Tasmania Notice M154/2017

The wreck buoy (41° 16'.24 S 148° 20'.07 E) has been destroyed.

**Chart temporarily affected - Aus 169**

**1104(T)/2017 AUSTRALIA - TASMANIA - Robbins Island - Scientific instruments**

Maritime and Safety Tasmania Notice M165/2017

Scientific instruments exist on the seabed in the following positions:

40° 37'.75 S 144° 50'.81 E

40° 30'.91 S 145° 02'.88 E

40° 37'.55 S 145° 13'.32 E.

**Chart temporarily affected - Aus 790**

II

**HYDROGRAPHIC REPORTS**

NIL

### III

#### **NAVIGATION WARNINGS**

The Australian Hydrographic Service will no longer compile Section III of the Australian Notices to Mariners. For the most up to date navigation warnings please refer to:

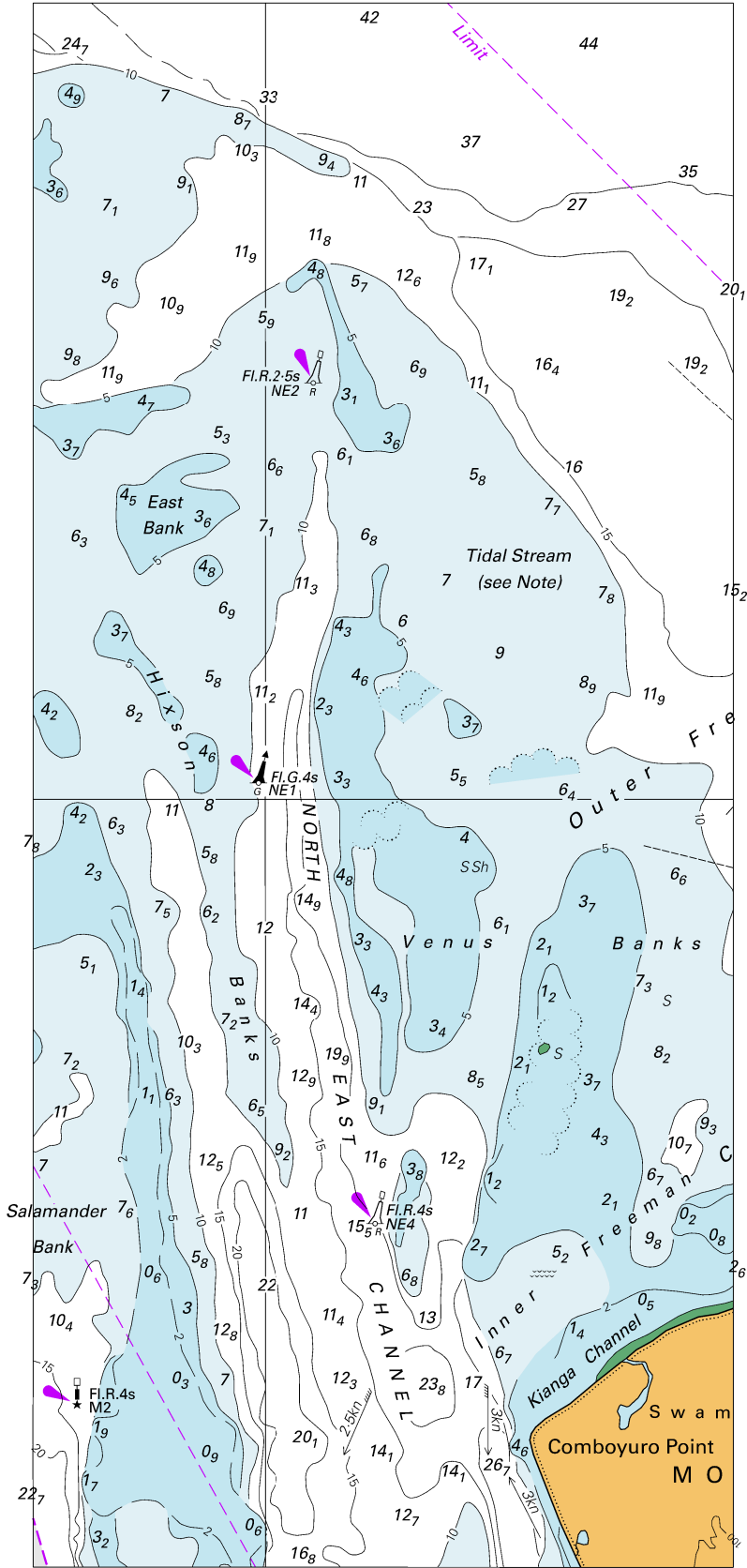
AMSA Navigation Warnings

<http://amsa.gov.au/search-and-rescue/distress-and-safety-comms/msi/msi-email/index.asp>

New Zealand Notices to Mariners (Navarea XIV warnings)

<http://www.linz.govt.nz/sea/maritime-safety/notices-mariners>

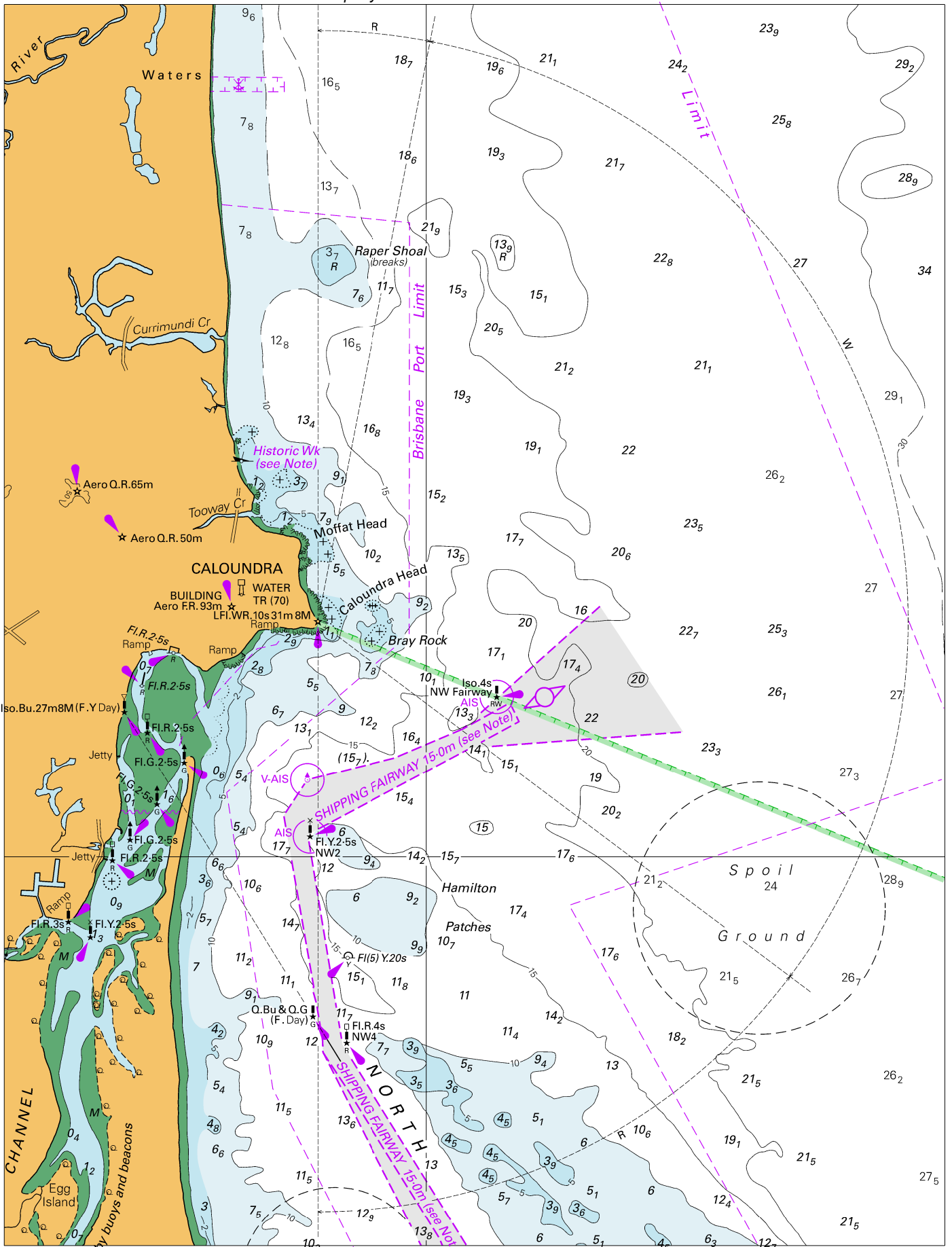
To accompany Australian Notice to Mariners 1070/2017



© Commonwealth of Australia 2017

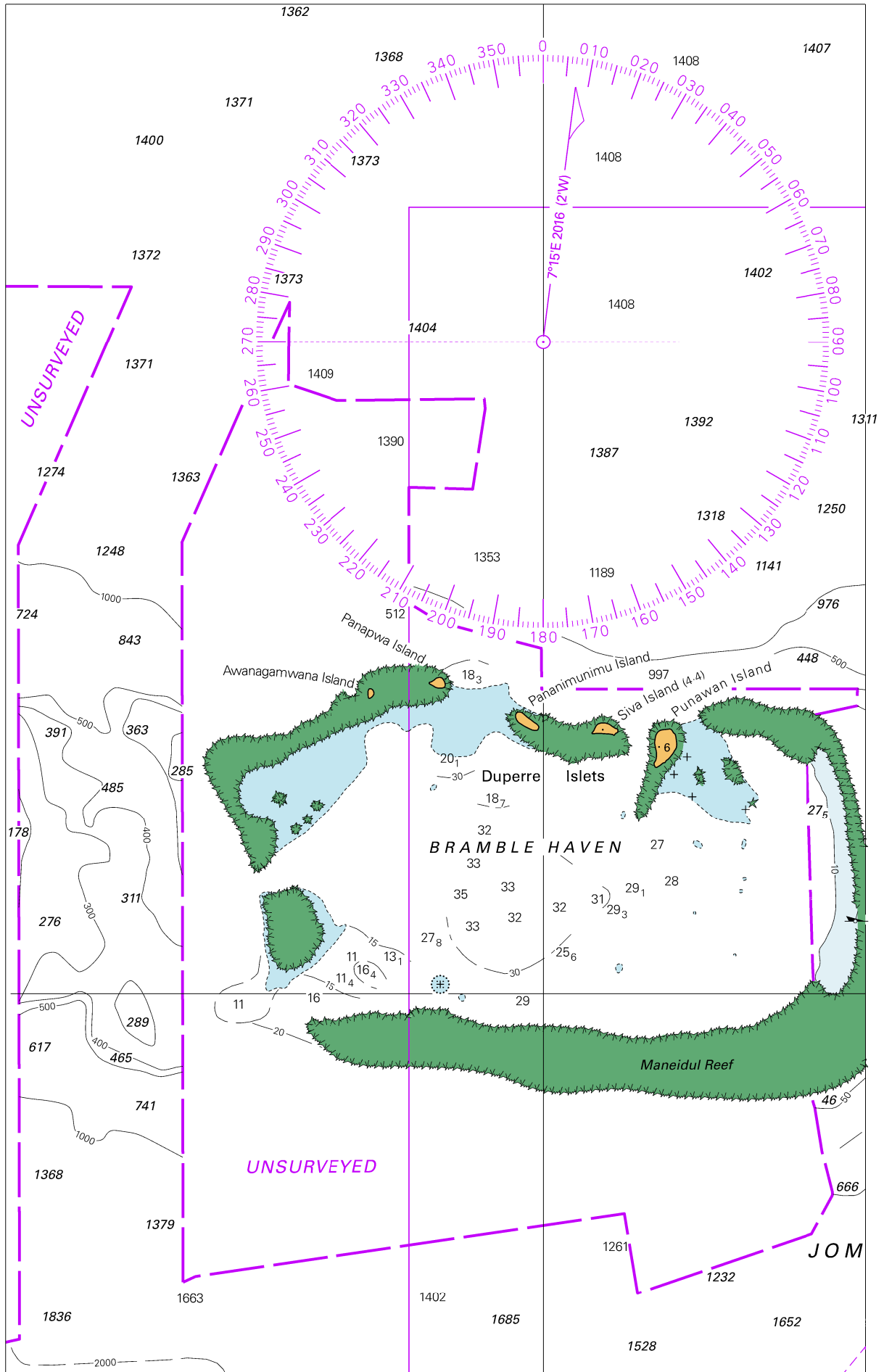
Block A for Chart Aus 235

(98.8 x 267.2mm)

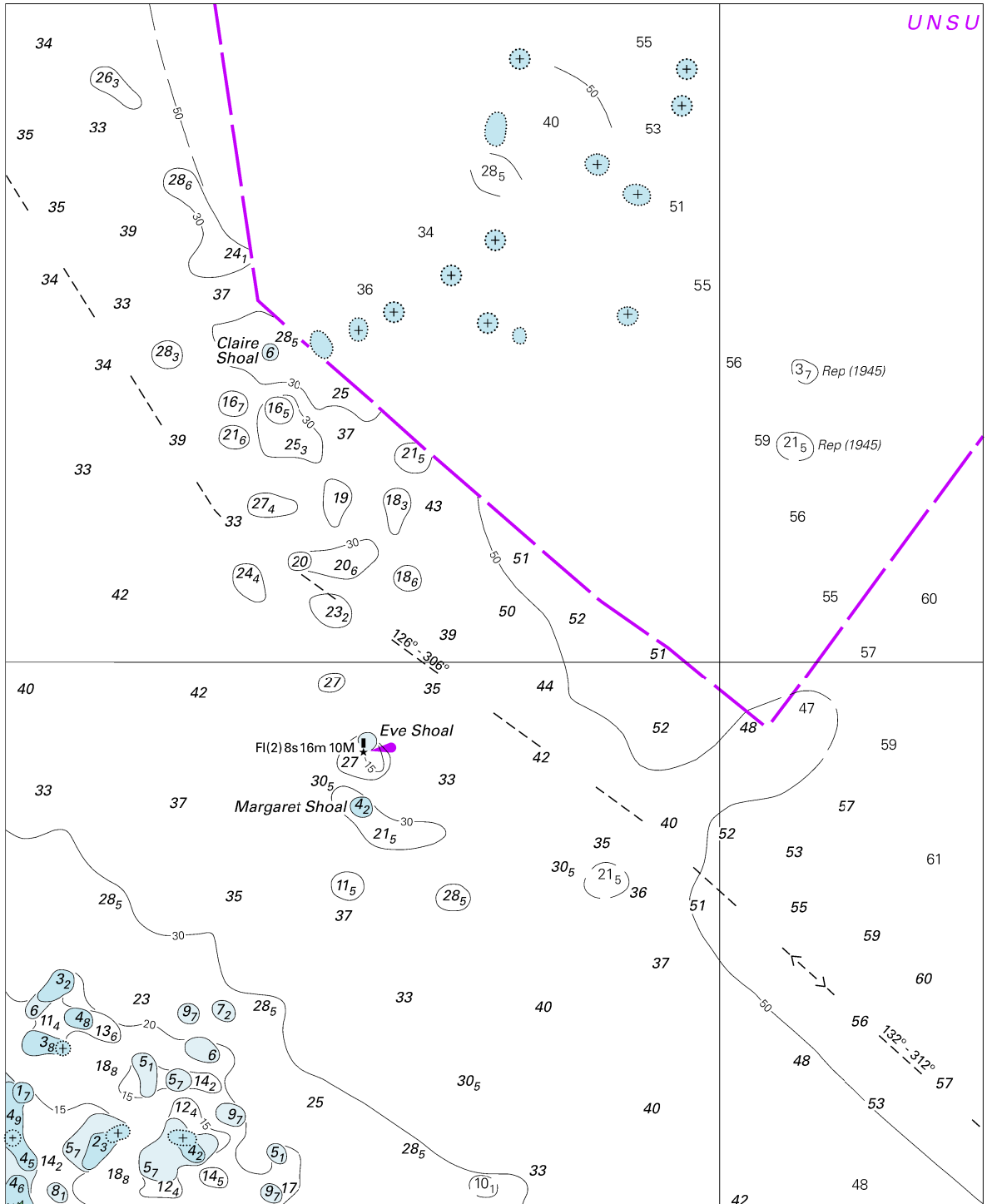








To accompany Australian Notice to Mariners 1076/2017

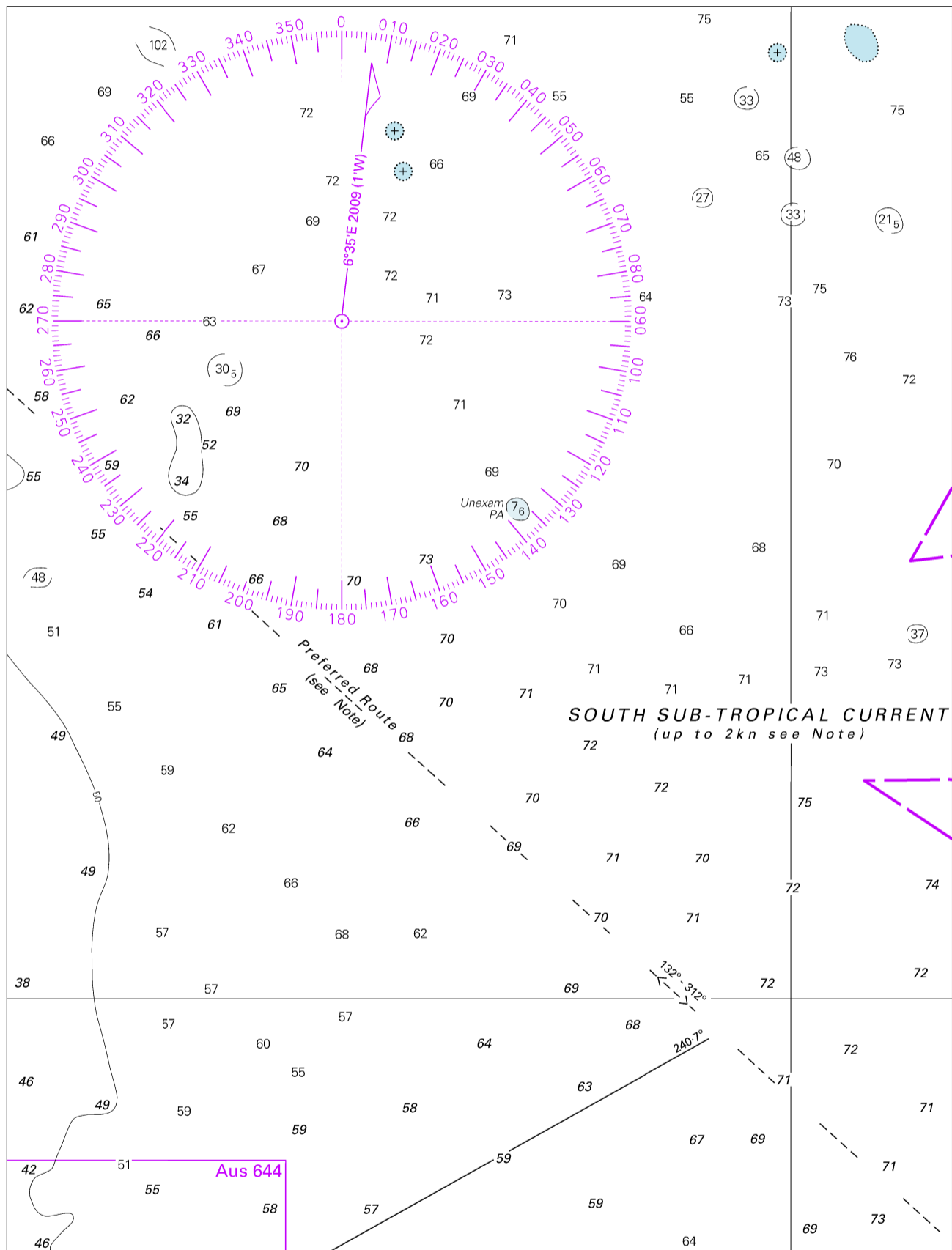


Block A for Chart Aus 521

© Commonwealth of Australia 2017

(155.3 x 190.9mm)

To accompany Australian Notice to Mariners 1076/2017

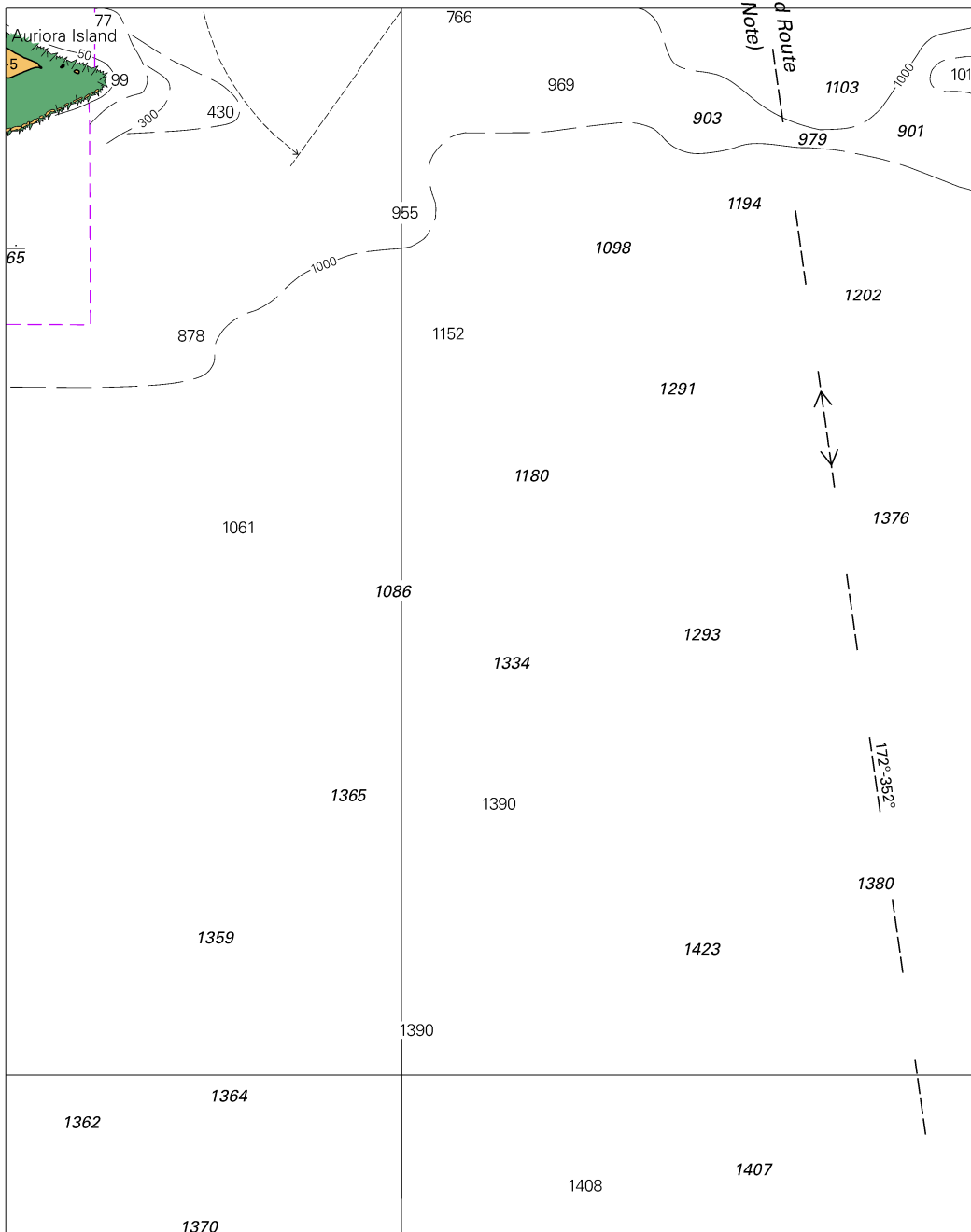


Block B for Chart Aus 521

© Commonwealth of Australia 2017

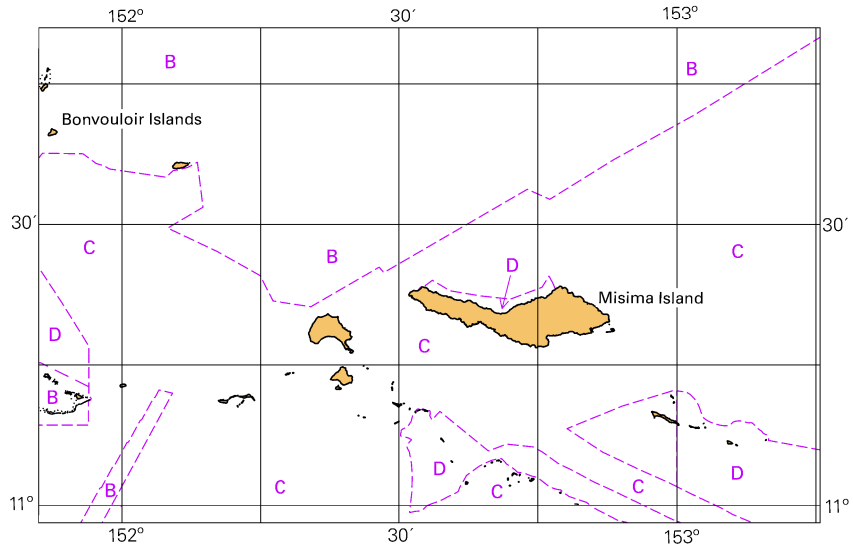
(170.5 x 224.4mm)

To accompany Australian Notice to Mariners 1077/2017



To accompany Australian Notice to Mariners 1077/2017

Zone of Confidence (ZOC) Diagram



Block B for Chart Aus 512 © Commonwealth of Australia 2017 (103.5 x 65.4mm)

To accompany Australian Notice to Mariners 1078/2017

