



17 November 2017

Edition 23

# AUSTRALIAN NOTICES TO MARINERS

## Notices 953 - 1003

Published fortnightly by the Australian Hydrographic Service



Australian Notices to Mariners are the authority for correcting charts and publications published by the Australian Hydrographic Service covering Australia, Papua New Guinea, Solomon Islands, Australian Antarctic Territory and Timor-Leste.

Commodore B.K. BRACE RAN  
*Hydrographer of Australia*

---

### SECTIONS.

- I. **Australian Notices to Mariners, including blocks and notes.**
- II. **Hydrographic Reports.**
- III. **Navigational Warnings.**

### SUPPLEMENTS.

- I. **Tracings**
- II. **Cumulative List of Australian Notices to Mariners.**
- III. **Cumulative List of Temporary and Preliminary Australian Notices to Mariners.**
- IV. **Temporary and Preliminary Notices in force.**
- V. **Amendments to Admiralty List of Lights and Fog Signals (Vol K), Radio Signals (NP 281(2), 282, 283(2), 285, 286(4)) and Sailing Directions (NP 9, 13, 14, 15, 33, 34, 35, 36, 39, 44, 51, 60, 61, 62, 100, 136).**

---

© Commonwealth of Australia 2017

This work is copyright. Apart from any use permitted under the Copyright Act 1968, no part may be reproduced by any process, adapted, communicated or commercially exploited without prior written permission from The Commonwealth represented by the Australian Hydrographic Service.

## IMPORTANT NOTICE

This edition of Notices to Mariners includes all significant information affecting AHS products which the AHS has become aware of since the last edition. All reasonable efforts have been made to ensure the accuracy and completeness of the information, including third party information, on which these updates are based. The AHS regards third parties from which it receives information as reliable, however the AHS cannot verify all such information and errors may therefore exist. The AHS does not accept liability for errors in third party information.

---

## GENERAL INSTRUCTIONS

The substance of these notices should be inserted on the charts affected.

Bearings are referred to the true compass and are reckoned clockwise from North; those relating to lights are given as seen by an observer from seaward.

Positions quoted in notices relate to WGS84 which is the horizontal datum for all charts produced by the Australian Hydrographic Service.

The range quoted for a light is its nominal range.

Depths are with reference to the chart datum of each chart. Heights are above mean high water springs or mean higher high water, as appropriate.

The capital letter (P) or (T) after the number of any notice denotes a preliminary or temporary notice respectively, which are contained separately at the end of the permanent notices.

---

## REPORTING OF DANGERS

Mariners are particularly requested to notify the AUSTRALIAN HYDROGRAPHIC SERVICE, Locked Bag 8801 Wollongong, NSW 2500 (Fax 02-4223 6599, e-mail [datacentre@hydro.gov.au](mailto:datacentre@hydro.gov.au) or, alternatively by filling in and submitting the [Hydrographic Notes](#) forms located on the web site – [www.hydro.gov.au](http://www.hydro.gov.au)), immediately on the discovery of new dangers or suspected dangers to navigation. For changes or defects in aids to navigation notify AusSAR (Fax 02-6230 6868 or email [rccaus@amsa.gov.au](mailto:rccaus@amsa.gov.au)).

---

## AUTHORISED USE

Copies of Australian notices are available free of charge from the Australian Hydrographic Service (AHS) website ([www.hydro.gov.au](http://www.hydro.gov.au)) and through the eNotices (email) service ([www.hydro.gov.au/enotices/enotices.htm](http://www.hydro.gov.au/enotices/enotices.htm)).

Individual Notices may be copied for the purpose of inserting Notice substance on official charts and publications. Paper copies may be printed by chart agents and distributed to customers on a cost recovery basis. Participating chart agents are listed on the AHS website as providing a 'Paper Notices to Mariners' service ([www.hydro.gov.au/webapps/jsp/agents/agents-list.jsp](http://www.hydro.gov.au/webapps/jsp/agents/agents-list.jsp)). Copies of the notices may not be sold for profit without prior written agreement.

## NUMERICAL INDEX OF NOTICES TO MARINERS

### Edition No 23

Notices	Aus Chart, INT Chart, ENC Cell, AHP, BA Pubs
953	Aus 208
954	Aus 202
955	Aus 221
956	Aus 268
957	Aus 281, 834, 4620, INT 620
958	Aus 270
959	Aus 292, 839, 4620, 4720, INT 620, 720
960	Aus 674, 677
961	Aus 714
962	Aus 310, 4721, INT 721
963	Aus 37, 730
964	Aus 74, 331, 4725, INT 725
965	Aus 113
966	Aus 112, 117
967	Aus 116
968	Aus 328, 329, 4723, INT 723
969	Aus 52, 53
970	Aus 754
971	Aus 127
972	Aus 485, 781
973	Aus 130, 137
974	Aus 485, 777
975	Aus 182
976	Aus 182
977	Aus 790
978(T)	Aus 200, 202
979(T)	Aus 200, 202
980(T)	Aus 255
981(T)	Aus 268
982(T)	Aus 240
983(T)	Aus 249, 250
984(T)	Aus 249, 250, 823, 4060, 4602, 4620, 4621, 4635, INT 60, 602, 620, 621, 635
985(T)	Aus 250
986(T)	Aus 236
987(T)	Aus 270
988(T)	Aus 256
989(P)	Aus 377
990(T)	Aus 507, 4620, 4621, INT 620, 621
991(T)	Aus 24
992(T)	Aus 324, 4722, INT 722
993(T)	Aus 319, 320, 4721, 4722, INT 721, 722
994(T)	Aus 319, 320
995(T)	Aus 119
996(T)	Aus 112, 754
997(T)	Aus 328, 744, 4723, 4725, INT 723, 725
998(T)	Aus 153
999(T)	Aus 154
1000(T)	Aus 182
1001(T)	Aus 182
1002(T)	Aus 168
1003(T)	Aus 170, 766, 797

## NUMERICAL INDEX OF CHARTS AFFECTED

### Edition No 23

Aus Chart	Notices
Aus 24	991(T)
Aus 37	963
Aus 52	969
Aus 53	969
Aus 74	964
Aus 112	966, 996(T)
Aus 113	965
Aus 116	967
Aus 117	966
Aus 119	995(T)
Aus 127	971
Aus 130	973
Aus 137	973
Aus 153	998(T)
Aus 154	999(T)
Aus 168	1002(T)
Aus 170	1003(T)
Aus 182	975, 976, 1000(T), 1001(T)
Aus 200	978(T), 979(T)
Aus 202	954, 978(T), 979(T)
Aus 208	953
Aus 221	955
Aus 236	986(T)
Aus 240	982(T)
Aus 249	983(T), 984(T)
Aus 250	983(T), 984(T), 985(T)
Aus 255	980(T)
Aus 256	988(T)
Aus 268	956, 981(T)
Aus 270	958, 987(T)
Aus 281	957
Aus 292	959
Aus 310	962
Aus 319	993(T), 994(T)
Aus 320	993(T), 994(T)
Aus 324	992(T)
Aus 328	968, 997(T)
Aus 329	968
Aus 331	964
Aus 377	989(P)
Aus 485	972, 974
Aus 507	990(T)
Aus 674	960
Aus 677	960
Aus 714	961
Aus 730	963
Aus 744	997(T)
Aus 754	970, 996(T)
Aus 766	1003(T)
Aus 777	974
Aus 781	972
Aus 790	977
Aus 797	1003(T)
Aus 823	984(T)

Aus Chart	Notices
Aus 834	957
Aus 839	959
Aus 4060	984(T)
Aus 4602	984(T)
Aus 4620	957, 959, 984(T), 990(T)
Aus 4621	984(T), 990(T)
Aus 4635	984(T)
Aus 4720	959
Aus 4721	962, 993(T)
Aus 4722	992(T), 993(T)
Aus 4723	968, 997(T)
Aus 4725	964, 997(T)

INT Chart	Notices
INT 60	984(T)
INT 602	984(T)
INT 620	957, 959, 984(T), 990(T)
INT 621	984(T), 990(T)
INT 635	984(T)
INT 720	959
INT 721	962, 993(T)
INT 722	992(T), 993(T)
INT 723	968, 997(T)
INT 725	964, 997(T)

**953 AUSTRALIA - NEW SOUTH WALES - Newcastle - Fog siren**

Port Authority of New South Wales

**Aus 208 [442/2017]**

Delete legend, Siren 32° 55'.55 S 151° 46'.77 E

**954 AUSTRALIA - NEW SOUTH WALES - Port Jackson - Manns Point - Nomenclature**

Viva Energy Australia

**Aus 202 [593/2017]**Amend legend to *Viva Energy Aust* 33° 50'.52 S 151° 11'.15 E**955 AUSTRALIA - NEW SOUTH WALES - South Solitary Island - Rock northwestwards**

Department of Environment, Climate Change and Water NSW

**Aus 221 [333/2016]**

Insert contour value, 15 30° 11'.88 S 153° 15'.18 E

Move rock which covers and uncovers, with legend (Q<sub>6</sub>)  
to 30° 11'.89 S 153° 15'.13 E  
30° 11'.96 S 153° 15'.17 EDelete depth, 12<sub>8</sub>m 30° 12'.0 S 153° 15'.2 E**956 AUSTRALIA - QUEENSLAND - Bowen - Wreck**

Maritime Safety Queensland

**Aus 268 [596/2017]**

Insert stranded wreck 20° 01'.373 S 148° 15'.580 E

**Aus 268 (plan, Bowen) [596/2017]**

Insert stranded wreck 20° 01'.373 S 148° 15'.580 E

**957 AUSTRALIA - QUEENSLAND - Chapman Island - Light range amended**

Australian Maritime Safety Authority

**Aus 281 [895/2017]**

Amend light range to 10/8M 12° 53'.1 S 143° 35'.8 E

**Aus 834 [895/2017]**

Amend light range to 10/8M 12° 53'.1 S 143° 35'.8 E

**Aus 4620 (INT 620) [821/2017]**

Amend light range to 10/8M 12° 53'.1 S 143° 35'.8 E

**958 AUSTRALIA - QUEENSLAND - Cooktown - Light buoy moved**

Maritime Safety Queensland

**Aus 270 (plan, Cooktown) [546/2017]**Move light buoy 15° 27'.40 S 145° 15'.12 E  
to 15° 27'.434 S 145° 15'.074 E

**959 AUSTRALIA - QUEENSLAND - Wyborn Reef - Light range amended**

Australian Maritime Safety Authority

**Aus 292 [1063/2016]**

Amend light range to 10/8M 10° 49'.2 S 142° 46'.5 E

**Aus 839 [823/2017]**

Amend light range to 10/8M 10° 49'.2 S 142° 46'.5 E

**Aus 4620 (INT 620) [957/2017]**

Amend light range to 10/8M 10° 49'.2 S 142° 46'.5 E

**Aus 4720 (INT 720) [958/2016]**

Amend light range to 10/8M 10° 49'.2 S 142° 46'.5 E

**960 PAPUA NEW GUINEA - Gigo Point to Kimbe - Light beacons; infrastructure**

National Maritime Safety Authority PNG

**Aus 674 [135/2013]**Move light beacon to 5° 32'.06 S 150° 08'.29 E  
5° 32'.013 S 150° 08'.273 E

Delete light beacon 5° 32'.13 S 150° 08'.13 E

**Aus 677 (plan, Kimbe) [544/2016]**Insert light beacon, *Fl.G.3s*, with starboard lateral topmark  
accompanying block 5° 32'.102 S 150° 08'.277 E  
5° 32'.9 S 150° 08'.9 EMove light beacon to 5° 32'.06 S 150° 08'.29 E  
5° 32'.013 S 150° 08'.273 EDelete depth, 6<sub>2</sub>m 5° 32'.10 S 150° 08'.28 E**961 AUSTRALIA - NORTHERN TERRITORY - Cape Croker - Light range amended**

Australian Maritime Safety Authority

**Aus 714 [344/2016]**

Amend light range to 11M 10° 58'.8 S 132° 35'.5 E

**962 INDONESIA - Pulau Selaru - Tanjung Arousu - Light**

Australian Hydrographic Service

**Aus 310 [1026/2016]**Amend light to, *Fl.10s 34m 18M* 8° 20'.4 S 130° 45'.4 E**Aus 4721 (INT 721) [856/2017]**Amend light range to, *18M* 8° 20'.4 S 130° 45'.4 E**963 AUSTRALIA - WESTERN AUSTRALIA - Brunswick Bay - Depths**HMAS *Leeuwin***Aus 37 [697/2017]**Insert depth, 16<sub>7</sub>m, enclosed by contour 15° 00'.48 S 124° 52'.36 E

depth, 13m, enclosed by contour 15° 07'.62 S 124° 50'.53 E

**Aus 730 [697/2017]**Insert depth, 16<sub>7</sub>m, enclosed by contour 15° 00'.48 S 124° 52'.36 E

depth, 13m, enclosed by contour 15° 07'.62 S 124° 50'.53 E

depth, 9<sub>8</sub>m, enclosed by contour 15° 13'.95 S 124° 48'.12 EDelete depth, 28<sub>5</sub>m 15° 00'.6 S 124° 52'.4 E

**964 AUSTRALIA - WESTERN AUSTRALIA - Cape Ronsard to Steep Point - Light range**

Australian Maritime Safety Authority

**Aus 74 [1113/2016]**

Amend light range to 11M 26° 08'.9 S 113° 09'.7 E

**Aus 331 [NE 10/2/2017]**

Amend light range to 11M 26° 08'.9 S 113° 09'.7 E

light range to 11M 25° 16'.2 S 113° 04'.6 E

light range to 11M 24° 45'.5 S 113° 09'.3 E

**Aus 4725 (INT 725) [782/2017]**

Amend light range to 11M 26° 08'.9 S 113° 09'.7 E

light range to 11M 25° 16'.2 S 113° 04'.6 E

light range to 11M 24° 45'.5 S 113° 09'.3 E

**965 AUSTRALIA - WESTERN AUSTRALIA - Fremantle - Infrastructure; depths**

Former Notice - 579(T)/2017 is cancelled

Fremantle Ports

**Aus 113 [322/2017]**

Insert accompanying block 32° 02'.25 S 115° 45'.16 E

**966 AUSTRALIA - WESTERN AUSTRALIA - Fremantle - Deepwater Channel to Parmelia Bank - Topmark; AIS withdrawn**

Fremantle Ports

**Aus 112 [651/2017]**

Insert port lateral topmark 32° 00'.070 S 115° 41'.718 E

starboard lateral topmark 32° 00'.060 S 115° 41'.502 E

Delete magenta circle, with legend, AIS 32° 00'.07 S 115° 41'.72 E

**Aus 117 [860/2017]**

Insert starboard lateral topmark 32° 07'.454 S 115° 42'.038 E

**967 AUSTRALIA - WESTERN AUSTRALIA - Mandurah - Nav aids; coastline**

Department of Transport WA

**Aus 116 (plan, Entrance to Mandurah Estuary) [552/2017]**

Insert accompanying block 32° 31'.5 S 115° 43'.0 E

**968 AUSTRALIA - WESTERN AUSTRALIA - Montebello Saddle - Well**

Chevron Australia Pty Ltd

**Aus 328 [900/2017]**Insert depth, 1058m, enclosed by danger circle, with legend *Well* 20° 25'.94 S 114° 19'.14 E**Aus 329 [729/2017]**Insert depth, 1058m, enclosed by danger circle, with legend *Well* 20° 25'.94 S 114° 19'.14 E**Aus 4723 (INT 723) [605/2017]**Insert depth, 1058m, enclosed by danger circle, with legend *Well* 20° 25'.9 S 114° 19'.1 E**969 AUSTRALIA - WESTERN AUSTRALIA - Port Hedland - Hunt Point - Depths; infrastructure**

Pilbara Ports Authority

**Aus 52 [142/2017]**

Insert accompanying block A 20° 18'.2 S 118° 34'.3 E

accompanying block B 20° 18'.3 S 118° 31'.6 E

**Aus 53 [59/2017]**

Insert accompanying block 20° 18'.8 S 118° 34'.4 E

<b>970</b>	<b>AUSTRALIA - WESTERN AUSTRALIA - Rottnest Island - Light buoy withdrawn westwards</b>		
Recfishwest			
<b>Aus 754</b>	[60/2017]		
Delete	light buoy	32° 03'.1 S	115° 13'.3 E
<b>971</b>	<b>AUSTRALIA - SOUTH AUSTRALIA - Encounter Bay - Beacon</b>		
Australian Hydrographic Service			
<b>Aus 127</b>	(plan, King Head to Port Elliot) [1032/2016]		
Replace	beacon, with beacon with port lateral topmark	35° 35'.1 S	138° 36'.0 E
<b>972</b>	<b>AUSTRALIA - SOUTH AUSTRALIA - Gulf St Vincent - Orontes Bank - Light range amended</b>		
Australian Maritime Safety Authority			
<b>Aus 485</b>	[904/2017]		
Amend	light range to 11M	34° 45'.4 S	138° 00'.5 E
<b>Aus 781</b>	[904/2017]		
Amend	light range to 11M	34° 45'.4 S	138° 00'.5 E
<b>973</b>	<b>AUSTRALIA - SOUTH AUSTRALIA - Port Adelaide - Overhead power cable removed</b>		
Department of Planning, Transport and Infrastructure SA Notice 22/2016			
<b>Aus 130</b>	[903/2017]		
Delete	overhead power cable with legend, safe clearance 54, between	34° 47'.54 S	138° 31'.06 E
		34° 47'.46 S	138° 30'.59 E
	Pylon and legend, Pyl (110)	34° 47'.54 S	138° 31'.06 E
	Pylon and legend, Pyl (110)	34° 47'.46 S	138° 30'.59 E
<b>Aus 137</b>	[864/2017]		
Delete	overhead power cable with legend, safe clearance 54, between	34° 47'.54 S	138° 31'.06 E
		34° 47'.46 S	138° 30'.59 E
	Pylon and legend, Pyl (110)	34° 47'.54 S	138° 31'.06 E
	Pylon and legend, Pyl (110)	34° 47'.46 S	138° 30'.59 E
<b>974</b>	<b>AUSTRALIA - SOUTH AUSTRALIA - Walrus Rock - Rock; depth</b>		
Department of Planning, Transport and Infrastructure SA			
<b>Aus 485</b>	[972/2017]		
Delete	underwater rock and semi-enclosing danger line	33° 59'.0 S	137° 29'.4 E
<b>Aus 777</b>	[735/2017]		
Replace	depth, 2 <sub>7</sub> m, with depth, 3 <sub>6</sub> m	33° 59'.2 S	137° 29'.8 E
Delete	underwater rock and enclosing danger circle	33° 59'.0 S	137° 29'.4 E
<b>975</b>	<b>AUSTRALIA - VICTORIA - Corner Inlet - Barry Beach - Depths</b>		
Gippsland Ports			
<b>Aus 182</b>	(plan, Barry Beach Marine Terminal) [739/2017]		
Replace	depth, 5 <sub>9</sub> m, with depth, 5 <sub>7</sub> m	38° 42'.87 S	146° 22'.84 E
	depth, 6 <sub>2</sub> m, with depth, 5 <sub>9</sub> m	38° 43'.31 S	146° 22'.62 E
<b>976</b>	<b>AUSTRALIA - VICTORIA - Port Welshpool - Depth</b>		
Gippsland Ports			
<b>Aus 182</b>	(plan, Port Welshpool) [975/2017]		
Replace	depth, 2 <sub>2</sub> m, with depth, 2m, enclosed by contour	38° 42'.18 S	146° 27'.92 E

**977 AUSTRALIA - TASMANIA - Three Hummock Island - Wreck**

*Former Notice - 889(T)/2017 is cancelled*  
Marine and Safety Tasmania

**Aus 790 [460/2017]**

Insert safe clearance depth, 20m, enclosed by danger circle with legend, Wk

40° 27'.64 S

144° 50'.07 E

**978(T)/2017 AUSTRALIA - NEW SOUTH WALES - Port Jackson - Blues Point - Drilling operations**

Port Authority of New South Wales Notice 20/2017

Vessel *Starlight* will be conducting drilling operations in the vicinity of position 33° 51'.11 S 151° 12'.23 E, starting on 27 November.

The vessel will monitor VHF Ch 13 and 16.

Mariners are advised to navigate with caution in the area.

**Chart temporarily affected - Aus 200 - Aus 202**

**979(T)/2017 AUSTRALIA - NEW SOUTH WALES - Port Jackson - Seafourth Bluff to Longnose Point - Drilling operations completed**

*Former Notice* - 287(T)/2017 is cancelled

Port Authority of New South Wales Notice 12/2017

Cancel this notice on receipt.

**Chart formerly affected - Aus 200 - Aus 202**

**980(T)/2017 AUSTRALIA - QUEENSLAND - Abbot Point - Mooring buoys**

*Former Notice* - 18(T)/2017 is cancelled

Maritime Safety Queensland Notice 441(T)/2017

Orange mooring buoys exist in positions 19° 53'.18 S 148° 06'.25 E and 19° 52'.98 S 148° 06'.16 E.

**Chart temporarily affected - Aus 255**

**981(T)/2017 AUSTRALIA - QUEENSLAND - Bowen - Wreck charted**

*Former Notice* - 269(T)/2014 is cancelled

Maritime Safety Queensland

Cancel this notice on receipt.

**Chart formerly affected - Aus 268**

**982(T)/2017 AUSTRALIA - QUEENSLAND - Great Sandy Strait - Tooth Island - Light beacon destroyed**

Maritime Safety Queensland Notice 442(T)/2017

The port lateral light beacon, *Fl.R.2.5s* (25° 33'.84 S 152° 55'.60 E), has been destroyed; a port lateral light buoy, *Fl.R.2.5s*, exists in situ.

**Chart temporarily affected - Aus 240**

**983(T)/2017 AUSTRALIA - QUEENSLAND - Hay Point - Dredging operations**

Maritime Safety Queensland Notices 446, 451(T)/2017

Vessel *Pacific Tiger* and support vessel *Norfolk* are conducting dredging operations in the departure channel (21° 15'.95 S 149° 20'.45 E).

Vessels will monitor VHF Ch 10 and 16 and will display appropriate lights and shapes.

Mariners are advised to navigate with caution in the area.

**Chart temporarily affected - Aus 249 - Aus 250**

**984(T)/2017 AUSTRALIA - QUEENSLAND - Hay Point - Light restored**

Former Notice - 567(T)/2017 is cancelled  
Maritime Safety Queensland

Cancel this notice on receipt.

**Chart formerly affected - Aus 249 - Aus 250 - Aus 823 - Aus 4060 (INT 60) - Aus 4602 (INT 602) - Aus 4620 (INT 620) - Aus 4621 (INT 621) - Aus 4635 (INT 635)**

**985(T)/2017 AUSTRALIA - QUEENSLAND - Mackay - Dredging operations**

Maritime Safety Queensland Notice 447, 450(T)/2017

Vessel *Pacific Tiger* and support vessel *Norfolk* are conducting dredging operations in Mackay Harbour and entrance channel.

Vessels will monitor VHF Ch 10 and 16 and will display appropriate lights and shapes.

Mariners are advised to navigate with caution in the area.

**Chart temporarily affected - Aus 250**

**986(T)/2017 AUSTRALIA - QUEENSLAND - Moreton Bay - Scarborough - Light beacon destroyed**

Maritime Safety Queensland Notice 445(T)/2017

The special purpose light beacon, *Fl.Y.2.5s No1* (27° 10'.97 S 153° 06'.15 E), has been destroyed; a special light buoy, *Fl.Y.2.5s*, exists in situ.

**Chart temporarily affected - Aus 236**

**987(T)/2017 AUSTRALIA - QUEENSLAND - Port Douglas - Dicksons Inlet - Dredging operations**

Maritime Safety Queensland Notice 444(T)/2017

Dredging operations are in progress in Dicksons Inlet (16° 29'.00 S 145° 27'.55 E).

The dredge will monitor VHF Ch 12.

Mariners are advised to navigate with caution in the area.

**Chart temporarily affected - Aus 270**

**988(T)/2017 AUSTRALIA - QUEENSLAND - Townsville - Sea Channel - Light buoy off station**

Maritime Safety Queensland Notice 452(T)/2017

The special light buoy, *Fl.Y.2.5s* (19° 12'.60 S 146° 51'.16 E) is off station.

**Chart temporarily affected - Aus 256**

**989(P)/2017 AUSTRALIA - CORAL SEA - Portlock Reefs - Reefs**

LADS Flight

Latest survey shows uncharted reefs exist in area bounded by the following positions:

9° 33'.30 S 144° 46'.00 E  
9° 33'.90 S 144° 42'.50 E  
9° 36'.60 S 144° 42'.70 E  
9° 37'.70 S 144° 45'.50 E.

Mariners are advised to navigate with caution in the area.

Charts will be updated in due course.

**Chart which will be affected - Aus 377**

**990(T)/2017 PAPUA NEW GUINEA - Batumata Point - Survey operations southeastwards**

National Maritime Safety Authority PNG Notice 14(T)/2017

MV *Guru* is conducting survey operations in the vicinity of the following buoys:

Position	Remarks
10° 47'.52 S 149° 12'.79 E	special light buoy, <i>Fl(5)Y.15s</i>
10° 47'.25 S 149° 11'.82 E	subsurface mooring buoy

Mariners are advised to navigate with caution in the area.

**Chart temporarily affected - Aus 507 - Aus 4620 (INT 620) - Aus 4621 (INT 621)****991(T)/2017 AUSTRALIA - NORTHERN TERRITORY - Darwin - Cullen Bay - Dredging operations**

Department of Infrastructure, Planning and Logistics NT Notice 52(T)/2017

*Dredge 14* is conducting dredging operations in Cullen Bay (12° 27'.13 S 130° 49'.12 E).A pipeline whose floating segment is marked by special light buoys, *Q.Y*, exists from the dredge out to a position in the vicinity of 12° 27'.12 S 130° 48'.62 E.

Mariners are advised to navigate with caution in the area.

**Chart temporarily affected - Aus 24****992(T)/2017 AUSTRALIA - WESTERN AUSTRALIA - Broome - Drill rig northwestwards**MODU *ENSCO 5006*Drill rig *ENSCO 5006* is anchored in position 17° 45'.05 S 121° 21'.00 E.**Chart temporarily affected - Aus 324 - Aus 4722 (INT 722)****993(T)/2017 AUSTRALIA - WESTERN AUSTRALIA - Browse Island - Drill rig northwestwards moved***Former Notice - 623(T)/2017* is cancelledMODU *ENSCO 5006*

Cancel this notice on receipt.

**Chart formerly affected - Aus 319 - Aus 320 - Aus 4721 (INT 721) - Aus 4722 (INT 722)****994(T)/2017 AUSTRALIA - WESTERN AUSTRALIA - Browse Island - Scientific instrument**

Australian Institute of Marine Science

A lit Autonomous Surface Vehicle is operating in an area bounded by the following positions:

14° 10'.70 S 123° 23'.72 E
14° 10'.70 S 124° 01'.07 E
13° 50'.84 S 124° 01'.07 E
13° 50'.84 S 123° 23'.72 E.

Mariners area advised to navigate with caution in the area.

**Chart temporarily affected - Aus 319 - Aus 320****995(T)/2017 AUSTRALIA - WESTERN AUSTRALIA - Esperance - Bandy Creek Boat Harbour - Harbour works**

Department of Transport WA Notice 121/2017

Works are in progress to upgrade the north lane of the boat ramp (33° 49'.88 S 121° 55'.95 E).

The north lane of the boat ramp will be closed during these works.

Mariners are advised to navigate with caution in the area.

**Chart temporarily affected - Aus 119**

**996(T)/2017 AUSTRALIA - WESTERN AUSTRALIA - Perth - Survey operations northwestwards completed**  
*Former Notice - 936(T)/2017 is cancelled*  
 EGS Survey Pty Ltd

Cancel this notice on receipt.

**Chart formerly affected - Aus 112 - Aus 754**

**997(T)/2017 AUSTRALIA - WESTERN AUSTRALIA - Thevenard Island - Gas field decommissioned**  
*Former Notice - 483(T)/2017 is cancelled*  
 MODU *Ocean Monarch*

Cancel this notice on receipt.

**Chart formerly affected - Aus 328 - Aus 744 - Aus 4723 (INT 723) - Aus 4725 (INT 725)**

**998(T)/2017 AUSTRALIA - VICTORIA - Port Phillip - Geelong - Barge**  
 Parks Victoria Notice 282(T)/2017

A barge is moored in position 38° 08'.57 S 144° 21'.76 E.

Submerged cables marked by special buoys exist between the pier and the barge.

Mariners are advised to navigate with caution in the area.

**Chart temporarily affected - Aus 153**

**999(T)/2017 AUSTRALIA - VICTORIA - Port Phillip - Station Pier - Harbour works completed**  
*Former Notice - 439(T)/2017 is cancelled*  
 Victorian Ports Corporation (Melbourne) Notice 150(T)/2017

Cancel this notice on receipt.

**Chart formerly affected - Aus 154**

**1000(T)/2017 AUSTRALIA - VICTORIA - Port Welshpool - Lewis Channel - Shoaling removed**  
*Former Notice - 563(T)/2015 is cancelled*  
 Gippsland Ports

Cancel this notice on receipt.

**Chart formerly affected - Aus 182**

**1001(T)/2017 AUSTRALIA - VICTORIA - Port Welshpool - Harbour works**  
 Gippsland Ports Notice 284(T)/2017

Works associated with the remediation of the Welshpool Pier (38° 42'.25 S 146° 27'.11 E) are in progress.

A floating boom has been established around the pier, marked at the pier end by six special light buoys, *Fl. Y.3s*.

Two barges, marked by lights, *Fl. Y.3s*, and two work boats are on site.

Mariners are advised to navigate with caution in the area.

**Chart temporarily affected - Aus 182**

**1002(T)/2017 AUSTRALIA - TASMANIA - Launceston - North Esk River - Harbour works**  
Marine and Safety Tasmania Notice 143/2017

Construction of a bridge is in progress in position 41° 25'.97 S 147° 07'.91 E.

Mariners are advised to navigate with caution in the area

**Chart temporarily affected - Aus 168**

**1003(T)/2017 AUSTRALIA - TASMANIA - Okehampton Bay - Marine farm works completed**  
*Former Notice - 676(T)/2017 is cancelled*  
Marine and Safety Tasmania Notice M108/2017

Cancel this notice on receipt.

**Chart formerly affected - Aus 170 - Aus 766 - Aus 797**

II

IV

**HYDROGRAPHIC REPORTS**

NIL

### III

#### **NAVIGATION WARNINGS**

The Australian Hydrographic Service will no longer compile Section III of the Australian Notices to Mariners. For the most up to date navigation warnings please refer to:

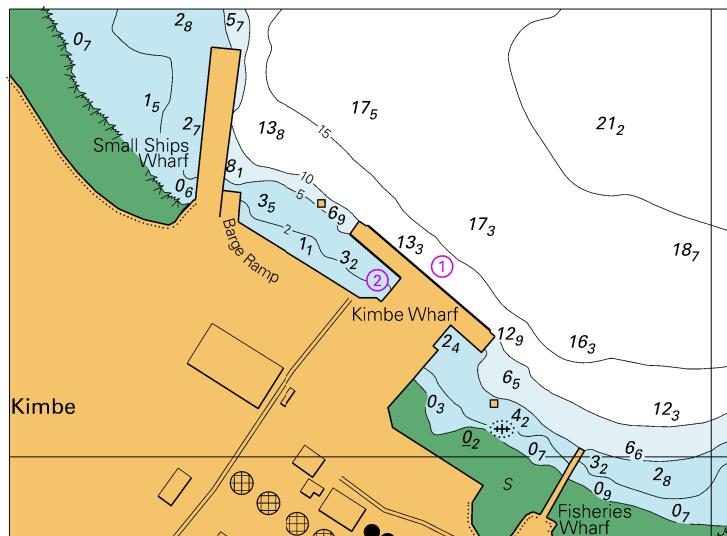
AMSA Navigation Warnings

<http://amsa.gov.au/search-and-rescue/distress-and-safety-comms/msi/msi-email/index.asp>

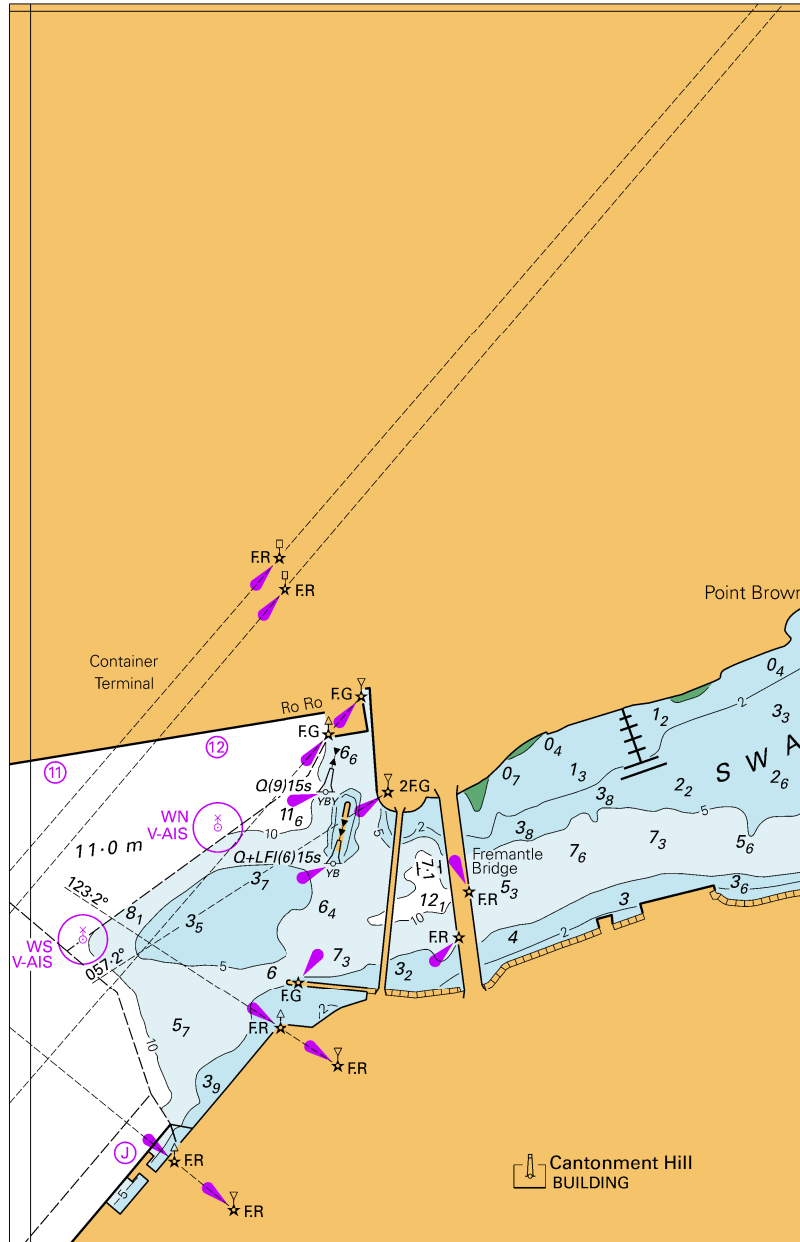
New Zealand Notices to Mariners (Navarea XIV warnings)

<http://www.linz.govt.nz/sea/maritime-safety/notices-mariners>

To accompany Australian Notice to Mariners 960/2017



To accompany Australian Notice to Mariners 965/2017



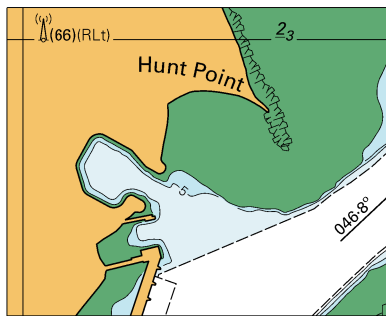
© Commonwealth of Australia 2017

Block for Chart Aus 113

(105.8 x 163.9mm)

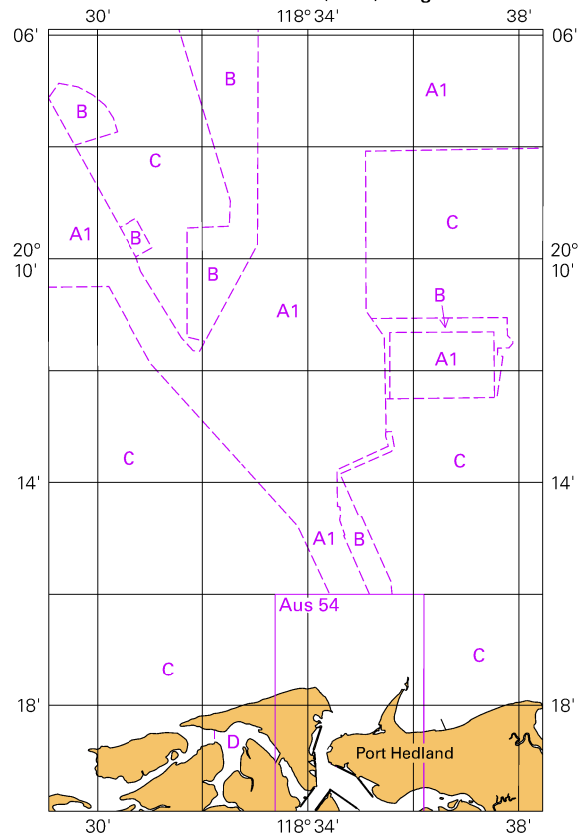


To accompany Australian Notice to Mariners 969/2017



© Commonwealth of Australia 2017  
Block A for Chart Aus 52 (50.9 x 40.7mm)

To accompany Australian Notice to Mariners 969/2017  
Zone of Confidence (ZOC) Diagram

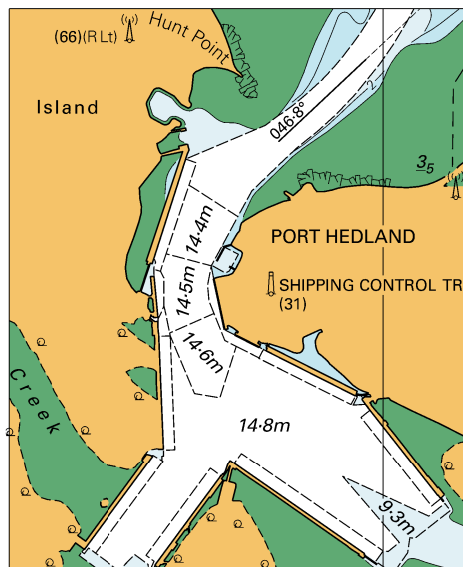


© Commonwealth of Australia 2017

Block B for Chart Aus 52

(65.5 x 103.4mm)

To accompany Australian Notice to Mariners 969/2017



© Commonwealth of Australia 2017

Block A for Chart Aus 53

(60.9 x 74.4mm)