



3 November 2017

Edition 22

# AUSTRALIAN NOTICES TO MARINERS

## Notices 891 - 952

Published fortnightly by the Australian Hydrographic Service



Australian Notices to Mariners are the authority for correcting charts and publications published by the Australian Hydrographic Service covering Australia, Papua New Guinea, Solomon Islands, Australian Antarctic Territory and Timor-Leste.

Commodore B.K. BRACE RAN  
*Hydrographer of Australia*

---

### SECTIONS.

- I. **Australian Notices to Mariners, including blocks and notes.**
- II. **Hydrographic Reports.**
- III. **Navigational Warnings.**

### SUPPLEMENTS.

- I. **Tracings**
- II. **Cumulative List of Australian Notices to Mariners.**
- III. **Cumulative List of Temporary and Preliminary Australian Notices to Mariners.**
- IV. **Temporary and Preliminary Notices in force.**
- V. **Amendments to Admiralty List of Lights and Fog Signals (Vol K), Radio Signals (NP 281(2), 282, 283(2), 285, 286(4)) and Sailing Directions (NP 9, 13, 14, 15, 33, 34, 35, 36, 39, 44, 51, 60, 61, 62, 100, 136).**

---

© Commonwealth of Australia 2017

This work is copyright. Apart from any use permitted under the Copyright Act 1968, no part may be reproduced by any process, adapted, communicated or commercially exploited without prior written permission from The Commonwealth represented by the Australian Hydrographic Service.

## IMPORTANT NOTICE

This edition of Notices to Mariners includes all significant information affecting AHS products which the AHS has become aware of since the last edition. All reasonable efforts have been made to ensure the accuracy and completeness of the information, including third party information, on which these updates are based. The AHS regards third parties from which it receives information as reliable, however the AHS cannot verify all such information and errors may therefore exist. The AHS does not accept liability for errors in third party information.

---

## GENERAL INSTRUCTIONS

The substance of these notices should be inserted on the charts affected.

Bearings are referred to the true compass and are reckoned clockwise from North; those relating to lights are given as seen by an observer from seaward.

Positions quoted in notices relate to WGS84 which is the horizontal datum for all charts produced by the Australian Hydrographic Service.

The range quoted for a light is its nominal range.

Depths are with reference to the chart datum of each chart. Heights are above mean high water springs or mean higher high water, as appropriate.

The capital letter (P) or (T) after the number of any notice denotes a preliminary or temporary notice respectively, which are contained separately at the end of the permanent notices.

---

## REPORTING OF DANGERS

Mariners are particularly requested to notify the AUSTRALIAN HYDROGRAPHIC SERVICE, Locked Bag 8801 Wollongong, NSW 2500 (Fax 02-4223 6599, e-mail [datacentre@hydro.gov.au](mailto:datacentre@hydro.gov.au) or, alternatively by filling in and submitting the [Hydrographic Notes](#) forms located on the web site – [www.hydro.gov.au](http://www.hydro.gov.au)), immediately on the discovery of new dangers or suspected dangers to navigation. For changes or defects in aids to navigation notify AusSAR (Fax 02-6230 6868 or email [rccaus@amsa.gov.au](mailto:rccaus@amsa.gov.au)).

---

## AUTHORISED USE

Copies of Australian notices are available free of charge from the Australian Hydrographic Service (AHS) website ([www.hydro.gov.au](http://www.hydro.gov.au)) and through the eNotices (email) service ([www.hydro.gov.au/enotices/enotices.htm](http://www.hydro.gov.au/enotices/enotices.htm)).

Individual Notices may be copied for the purpose of inserting Notice substance on official charts and publications. Paper copies may be printed by chart agents and distributed to customers on a cost recovery basis. Participating chart agents are listed on the AHS website as providing a 'Paper Notices to Mariners' service ([www.hydro.gov.au/webapps/jsp/agents/agents-list.jsp](http://www.hydro.gov.au/webapps/jsp/agents/agents-list.jsp)). Copies of the notices may not be sold for profit without prior written agreement.

## NUMERICAL INDEX OF NOTICES TO MARINERS

### Edition No 22

Notices	Aus Chart, INT Chart, ENC Cell, AHP, BA Pubs
891	Aus 204
892	Aus 197, 808
893	Aus 609
894	Aus 259, 828
895	Aus 281, 833, 834
896	Aus 293, 299
897	Aus 256
898	Aus 264
899	Aus 399, 683, 4604, 4622, 4634, INT 604, 622, 634, SLB 301
900	Aus 328, 742
901	Aus 54
902	Aus 327
903	Aus 130
904	Aus 485, 780, 781, 4728, INT 728
905	Aus 600, INT 9036
906	Aus 143
907	Aus 169, 171
908	Aus 179, 798
909(T)	Aus 197, 200, 808
910(T)	Aus 197, 200, 201, AX 00200T, 00201T
911(T)	Aus 197, 200, 808, 809, AX 00200T, 00808S, 00809S
912(T)	Aus 204, 217, AX 00215T
913(T)	Aus 220
914(T)	Aus 200, 201
915(T)	Aus 237
916(T)	Aus 259, 828
917(T)	Aus 252
918(T)	Aus 4602, 4635, 4643, INT 602, 635, 643
919(P)	Aus 256
920(T)	Aus 256
921(T)	Aus 235
922(T)	Aus 814
923(T)	Aus 260, 261, 367, 822
924(T)	Aus 257
925(T)	Aus 257
926(T)	Aus 256, 827
927(T)	Aus 621, 622
928(T)	Aus 299
929(T)	Aus 309, 722, 4721, INT 721
930(T)	Aus 316, 725
931(T)	Aus 328, 744, 4723, 4725, INT 723, 725
932(T)	Aus 314, 319
933(T)	Aus 328
934(T)	Aus 328, 329, 4723, 4725, INT 723, 725
935(T)	Aus 69
936(T)	Aus 112, 754
937(T)	Aus 52, 53, 54, 739, 740
938(T)	Aus 52, 53, 739, 740
939(T)	Aus 327, 4723, INT 723
940(T)	Aus 327
941(T)	Aus 40, 41
942(T)	Aus 130, 138
943(T)	Aus 141
944(T)	Aus 157
945(T)	Aus 153, 157
946(T)	Aus 357, 487
947(T)	Aus 487, 798, 800
948(T)	Aus 164
949(T)	Aus 172
950(T)	Aus 172
951(T)	Aus 173, 174, 794, 795
952(T)	Aus 171, 172

## NUMERICAL INDEX OF CHARTS AFFECTED

### Edition No 22

Aus Chart	Notices
Aus 40	941(T)
Aus 41	941(T)
Aus 52	937(T), 938(T)
Aus 53	937(T), 938(T)
Aus 54	901, 937(T)
Aus 69	935(T)
Aus 112	936(T)
Aus 130	903, 942(T)
Aus 138	942(T)
Aus 141	943(T)
Aus 143	906
Aus 153	945(T)
Aus 157	944(T), 945(T)
Aus 164	948(T)
Aus 169	907
Aus 171	907, 952(T)
Aus 172	949(T), 950(T), 952(T)
Aus 173	951(T)
Aus 174	951(T)
Aus 179	908
Aus 197	892, 909(T), 910(T), 911(T)
Aus 200	909(T), 910(T), 911(T), 914(T)
Aus 201	910(T), 914(T)
Aus 204	891, 912(T)
Aus 217	912(T)
Aus 220	913(T)
Aus 235	921(T)
Aus 237	915(T)
Aus 252	917(T)
Aus 256	897, 919(P), 920(T), 926(T)
Aus 257	924(T), 925(T)
Aus 259	894, 916(T)
Aus 260	923(T)
Aus 261	923(T)
Aus 264	898
Aus 281	895
Aus 293	896
Aus 299	896, 928(T)
Aus 309	929(T)
Aus 314	932(T)
Aus 316	930(T)
Aus 319	932(T)
Aus 327	902, 939(T), 940(T)
Aus 328	900, 931(T), 933(T), 934(T)
Aus 329	934(T)
Aus 357	946(T)
Aus 367	923(T)
Aus 399	899
Aus 485	904
Aus 487	946(T), 947(T)
Aus 600	905
Aus 609	893
Aus 621	927(T)
Aus 622	927(T)

Aus Chart	Notices
Aus 683	899
Aus 722	929(T)
Aus 725	930(T)
Aus 739	937(T), 938(T)
Aus 740	937(T), 938(T)
Aus 742	900
Aus 744	931(T)
Aus 754	936(T)
Aus 780	904
Aus 781	904
Aus 794	951(T)
Aus 795	951(T)
Aus 798	908, 947(T)
Aus 800	947(T)
Aus 808	892, 909(T), 911(T)
Aus 809	911(T)
Aus 814	922(T)
Aus 822	923(T)
Aus 827	926(T)
Aus 828	894, 916(T)
Aus 833	895
Aus 834	895
Aus 4602	918(T)
Aus 4604	899
Aus 4622	899
Aus 4634	899
Aus 4635	918(T)
Aus 4643	918(T)
Aus 4721	929(T)
Aus 4723	931(T), 934(T), 939(T)
Aus 4725	931(T), 934(T)
Aus 4728	904
AX 00200T	910(T), 911(T)
AX 00201T	910(T)
AX 00215T	912(T)
AX 00808S	911(T)
AX 00809S	911(T)
SLB 301	899

INT Chart	Notices
INT 9036	905
INT 602	918(T)
INT 604	899
INT 622	899
INT 634	899
INT 635	918(T)
INT 643	918(T)
INT 721	929(T)
INT 723	931(T), 934(T), 939(T)
INT 725	931(T), 934(T)

INT Chart	Notices
INT 728	<a href="#">904</a>

<b>891</b>	<b>AUSTRALIA - NEW SOUTH WALES - Hawkesbury River - Bar Island - Light buoy</b>		
Hornsby Shire Council			
<b>Aus 204</b>	[125/2017]		
Delete	light buoy	33° 31'.7 S	151° 08'.5 E
<b>892</b>	<b>AUSTRALIA - NEW SOUTH WALES - Jibbon Bumbora - Fish havens southwards</b>		
Subcon			
<b>Aus 197</b>	[196/2017]		
Insert	fish haven with minimum depth, 20 <sub>7</sub> m, centred on	34° 05'.66 S	151° 10'.63 E
<b>Aus 808</b>	[43/2017]		
Insert	fish haven with minimum depth, 21 <sub>7</sub> m, centred on	34° 05'.94 S	151° 10'.41 E
	fish haven with minimum depth, 20 <sub>9</sub> m, centred on	34° 05'.66 S	151° 10'.63 E
<b>893</b>	<b>AUSTRALIA - TASMAN SEA - Norfolk Island - Cascade Bay - Nav aids</b>		
Australian Hydrographic Service			
<b>Aus 609 (plan, Norfolk and Phillip Islands)</b>	[335/2016]		
Insert	triangular topmark apex up	29° 01'.359 S	167° 58'.235 E
	triangular topmark apex up	29° 01'.389 S	167° 58'.211 E
<b>Aus 609 (plan, Cascade Bay)</b>	[335/2016]		
Insert	triangular topmark apex up	29° 01'.359 S	167° 58'.235 E
	triangular topmark apex up	29° 01'.389 S	167° 58'.211 E
Delete	structure colour, W	29° 01'.36 S	167° 58'.24 E
	structure colour, W	29° 01'.39 S	167° 58'.21 E
<b>894</b>	<b>AUSTRALIA - QUEENSLAND - Hinchinbrook Channel - Cardwell - Wreck</b>		
Maritime Safety Queensland			
<b>Aus 259</b>	[499/2017]		
Insert	dangerous wreck	18° 14'.72 S	146° 01'.66 E
<b>Aus 828</b>	[693/2017]		
Insert	dangerous wreck	18° 14'.72 S	146° 01'.66 E
Delete	depth, 0 <sub>3</sub> m	18° 14'.7 S	146° 01'.5 E
<b>895</b>	<b>AUSTRALIA - QUEENSLAND - LADS Passage - Depths</b>		
LADS Flight			
<b>Aus 281</b>	[234/2016]		
Insert	depth, 7 <sub>9</sub> m, enclosed by contour	13° 17'.57 S	143° 44'.93 E
Delete	depth, 11 <sub>7</sub> m	13° 17'.6 S	143° 44'.9 E
<b>Aus 833</b>	[159/2017]		
Insert	depth, 8 <sub>2</sub> m, enclosed by contour	13° 42'.19 S	144° 12'.33 E
	depth, 10 <sub>9</sub> m, enclosed by contour	13° 47'.69 S	144° 16'.86 E
	depth, 8 <sub>9</sub> m, enclosed by contour	13° 37'.64 S	143° 46'.62 E
Delete	depth, 18 <sub>9</sub> m	13° 42'.0 S	144° 12'.5 E
<b>Aus 834</b>	[778/2017]		
Insert	depth, 8 <sub>2</sub> m, enclosed by contour	13° 42'.19 S	144° 12'.33 E
	depth, 8 <sub>9</sub> m, enclosed by contour	13° 37'.64 S	143° 46'.62 E
Replace	depth, 11 <sub>7</sub> m, with depth, 7 <sub>9</sub> m, enclosed by contour	13° 17'.6 S	143° 44'.9 E

**896 AUSTRALIA - QUEENSLAND - Thursday Island - Vivien Point - Light beacon**

Former Notice - 617(T)/2017 is cancelled  
Maritime Safety Queensland Notice 417/2017

**Aus 293 [823/2017]**

Delete structure colour, R 10° 35'.34 S 142° 12'.56 E

**Aus 299 [823/2017]**

Delete structure colour, R 10° 35'.34 S 142° 12'.56 E

**897 AUSTRALIA - QUEENSLAND - Townsville - Depths; infrastructure; pilot boarding place**

Maritime Safety Queensland

**Aus 256 [640/2017]**

Insert	accompanying block A	19° 08'.5 S	146° 54'.0 E
	accompanying block B	19° 15'.0 S	146° 50'.5 E
	depth, 8m	19° 11'.64 S	146° 51'.62 E
	depth, 7 <sub>7</sub> m	19° 11'.69 S	146° 52'.24 E
	depth, 7 <sub>9</sub> m	19° 11'.42 S	146° 52'.59 E
Delete	PBP note	19° 17'.2 S	146° 39'.7 E
	depth, 6 <sub>1</sub> m	19° 12'.6 S	146° 51'.5 E
	depth, 7 <sub>9</sub> m	19° 11'.6 S	146° 51'.7 E
	depth, 7 <sub>3</sub> m	19° 11'.7 S	146° 52'.1 E
	depth, 7 <sub>6</sub> m	19° 11'.4 S	146° 52'.5 E

**898 AUSTRALIA - QUEENSLAND - Trinity Inlet - Wreck; light buoy**

Maritime Safety Queensland Notice 346/2017

**Aus 264 [688/2017]**

Insert accompanying block 16° 58'.37 S 145° 47'.50 E

**899 PAPUA NEW GUINEA - Bougainville Island - Lights withdrawn**

Former Notice - 78(T)/2016 is cancelled  
National Maritime Safety Authority PNG

**Aus 399 [NE 22/9/2017]**

Delete light 6° 27'.5 S 155° 58'.4 E  
Delete light 5° 32'.5 S 155° 03'.9 E

**Aus 683 (plan, Approaches to Kieta Harbour and Anewa Bay) [NE 26/8/2016]**

Delete light beacon, with emanating light sectors and legends 6° 08'.9 S 155° 34'.3 E

**Aus 683 (plan, Approaches to Teop Harbour) [NE 26/8/2016]**

Delete light 5° 32'.49 S 155° 03'.88 E

**Aus 4604 (INT 604) [821/2017]**

Delete light 6° 27'.5 S 155° 58'.4 E  
Delete light 5° 32'.5 S 155° 03'.9 E

**Aus 4622 (INT 622) [NE 22/9/2017]**

Delete light 6° 27'.5 S 155° 58'.4 E  
Delete light 5° 32'.5 S 155° 03'.9 E

**Aus 4634 (INT 634) [NC 11/8/2017]**

Delete light 6° 27'.5 S 155° 58'.4 E

**SLB 301 [NC 11/8/2017]**

Delete light 6° 27'.5 S 155° 58'.4 E

**900 AUSTRALIA - WESTERN AUSTRALIA - Montebello Islands - Cautionary area revoked northwestwards**  
Australian Maritime Safety Authority

**Aus 328 [861/2017]**

Delete dashed magenta circle with legend, Cautionary Area (see Note), centred on 20° 03'.9 S 115° 11'.1 E

**Aus 742 [729/2017]**

Delete dashed magenta circle with legend, Cautionary Area (see Note), centred on 20° 05'.2 S 115° 11'.1 E

**901 AUSTRALIA - WESTERN AUSTRALIA - Port Hedland - Hunt Point - Nav aids; infrastructure; depths**  
Pilbara Ports Authority

Note: smaller scale charts to be updated in due course.

**Aus 54 [365/2017]**

Insert accompanying block A 20° 18'.28 S 118° 34'.35 E  
accompanying block B 20° 18'.25 S 118° 33'.62 E

**902 AUSTRALIA - WESTERN AUSTRALIA - Rankin Bank - Submarine cable**  
Linchpin Offshore Management Services

**Aus 327 [781/2017]**

Insert submarine cable, between 20° 03'.47 S 115° 43'.58 E  
19° 47'.76 S 116° 00'.03 E  
19° 45'.62 S 116° 03'.52 E  
19° 39'.59 S 115° 59'.76 E  
19° 34'.59 S 115° 59'.52 E  
19° 32'.59 S 116° 00'.59 E  
19° 31'.04 S 116° 02'.87 E  
19° 30'.53 S 116° 05'.63 E  
19° 30'.62 S 116° 07'.79 E  
19° 30'.97 S 116° 09'.03 E  
19° 31'.61 S 116° 10'.12 E  
19° 32'.42 S 116° 10'.85 E

**903 AUSTRALIA - SOUTH AUSTRALIA - Semaphore Anchorage - Light buoy**  
Department of Planning, Transport and Infrastructure SA Notice 23/2017

**Aus 130 [864/2017]**

Insert special conical light buoy, Fl. Y. 5s, with topmark 34° 49'.967 S 138° 26'.082 E

**904 AUSTRALIA - SOUTH AUSTRALIA - Troubridge Point - Racon discontinued**  
Australian Maritime Safety Authority Auscoast Warning 187/2017

**Aus 485 [608/2017]**

Delete magenta circle with legend, Racon (K) 35° 10'.0 S 137° 38'.5 E

**Aus 780 [97/2017]**

Delete magenta circle with legend, Racon (K) 35° 10'.0 S 137° 38'.5 E

**Aus 781 [864/2017]**

Delete magenta circle with legend, Racon (K) 35° 10'.0 S 137° 38'.5 E

**Aus 4728 (INT 728) [368/2017]**

Delete magenta circle with legend, Racon (K) 35° 10'.0 S 137° 38'.5 E

**905 SOUTHERN OCEAN - Antarctica - Williams Rocks - Beacon withdrawn**  
Australian Hydrographic Service

**Aus 600 (INT 9036) [NE 18/11/2016]**

Delete beacon 67° 26'.43 S 062° 47'.30 E

**906 AUSTRALIA - VICTORIA - Port Phillip - Frankston - Nav aids; infrastructure**

Parks Victoria

**Aus 143 [827/2017]**

Insert	accompanying block	38° 08'.5 S	145° 06'.5 E
--------	--------------------	-------------	--------------

**907 AUSTRALIA - TASMANIA - Marion Narrows - Light buoy**

Maritime and Safety Tasmania Notice M128/2017

**Aus 169 (plan, Blackman Bay) [415/2017]**

Insert	port lateral pillar buoy, <i>No4</i> , with topmark	42° 50'.818 S	147° 52'.750 E
--------	---	---------------	----------------

Delete	beacon	42° 50'.87 S	147° 52'.70 E
--------	--------	--------------	---------------

**Aus 171 [416/2017]**

Delete	beacon	42° 50'.9 S	147° 52'.7 E
--------	--------	-------------	--------------

**908 AUSTRALIA - TASMANIA - Waterhouse Island - Wreck**

Marine and Safety Tasmania

**Aus 179 (plan, Waterhouse Passage) [828/2017]**

Insert	depth, <i>20m</i> , enclosed by danger circle, with legend <i>Wk</i>	40° 48'.87 S	147° 36'.03 E
--------	--	--------------	---------------

Delete	depth, 23m	40° 48'.8 S	147° 36'.1 E
--------	------------	-------------	--------------

**Aus 798 [659/2017]**

Insert	depth, <i>20m</i> , enclosed by danger circle, with legend <i>Wk</i>	40° 48'.87 S	147° 36'.03 E
--------	--	--------------	---------------

Delete	depth, 23m	40° 48'.8 S	147° 36'.1 E
--------	------------	-------------	--------------

**909(T)/2017 AUSTRALIA - NEW SOUTH WALES - Ben Buckler - Scientific instruments southeastwards**  
Sydney Institute of Marine Science

Subsurface scientific instruments exist as follows:

<i>Position</i>	<i>Metres below surface</i>
33° 53'.74 S 151° 17'.30 E	27
33° 53'.91 S 151° 17'.75 E	41
33° 54'.16 S 151° 18'.18 E	58
33° 54'.42 S 151° 18'.60 E	63
33° 54'.69 S 151° 19'.06 E	64
33° 54'.95 S 151° 19'.52 E	64
33° 55'.21 S 151° 19'.94 E	71
33° 55'.46 S 151° 20'.37 E	70
33° 55'.71 S 151° 20'.79 E	80
33° 55'.98 S 151° 21'.25 E	80
33° 56'.24 S 151° 21'.71 E	82
33° 56'.49 S 151° 22'.16 E	87
33° 56'.75 S 151° 22'.59 E	90
33° 57'.06 S 151° 23'.02 E	98
33° 57'.32 S 151° 23'.47 E	119
33° 57'.84 S 151° 24'.32 E	127
34° 01'.16 S 151° 29'.70 E	145
34° 01'.46 S 151° 30'.18 E	149

**Chart temporarily affected - Aus 197 - Aus 200 - Aus 808**

**910(T)/2017 AUSTRALIA - NEW SOUTH WALES - Cabbage Tree Bay - Scientific instruments recovered**

*Former Notice* - 50(T)/2016 is cancelled  
Sydney Institute of Marine Science

Cancel this notice on receipt.

**Chart formerly affected - Aus 197 - Aus 200 - Aus 201 - AX 00200T - AX 00201T**

**911(T)/2017 AUSTRALIA - NEW SOUTH WALES - Cape Baily to Ben Buckler - Scientific instruments recovered**

*Former Notice* - 52(T)/2016 is cancelled  
Sydney Institute of Marine Science

Cancel this notice on receipt.

**Chart formerly affected - Aus 197 - Aus 200 - Aus 808 - Aus 809 - AX 00200T - AX 00808S - AX 00809S**

**912(T)/2017 AUSTRALIA - NEW SOUTH WALES - Hawkesbury River - Mullet Creek - Light buoy recovered**

*Former Notice* - 939(T)/2015 is cancelled  
Hornsby Shire Council

Cancel this notice on receipt.

**Chart formerly affected - Aus 204 - Aus 217 - AX 00215T**

**913(T)/2017 AUSTRALIA - NEW SOUTH WALES - Point Danger - Scientific instrument recovered**

*Former Notice* - 824(T)/2016 is cancelled  
NSW Department of Industry

Cancel this notice on receipt.

**Chart formerly affected - Aus 220**

**914(T)/2017 AUSTRALIA - NEW SOUTH WALES - Port Jackson - Middle Harbour - The Spit - Harbour works completed**

*Former Notice* - 710(T)/2016 is cancelled  
NSW Roads and Maritime Services Notice SY1617

Cancel this notice on receipt.

**Chart formerly affected - Aus 200 - Aus 201**

**915(T)/2017 AUSTRALIA - QUEENSLAND - Brisbane River - Luggage Point - Harbour works**

*Former Notice* - 748(T)/2017 is cancelled  
Maritime Safety Queensland

Harbour works are in progress at the Port North Common User Berth (27° 23'.02 S 153° 09'.28 E).

Barges will display appropriate lights and shapes and will monitor VHF Ch 12.

Mariners are advised to navigate with caution in the area.

**Chart temporarily affected - Aus 237**

**916(T)/2017 AUSTRALIA - QUEENSLAND - Hinchinbrook Channel - Cardwell - Wreck charted**

*Former Notice* - 602(T)/2013 is cancelled  
Maritime Safety Queensland

Cancel this notice on receipt.

**Chart formerly affected - Aus 259 - Aus 828**

**917(T)/2017 AUSTRALIA - QUEENSLAND - Laguna Quays - Shoaling; nav aids**

*Former Notices* - 757(T)/2011, 758(T)/2011 are cancelled  
Maritime Safety Queensland Notice 184(T)/2017

Shoaling exists within the entrance channel to Laguna Quays (20° 36'.03 S 148° 41'.21 E).

Light beacons marking the entrance may be damaged or unlit.

Mariners are advised to seek local knowledge prior to transiting the marina entrance and to navigate with caution in the area.

**Chart temporarily affected - Aus 252**

**918(T)/2017 AUSTRALIA - QUEENSLAND - Lord Howe Rise - Survey operations**

Geoscience Australia, JAMSTEC

RV *Kairei* is conducting survey operations in an area bounded by the following positions:

28° 01'.8 S 156° 36'.0 E

28° 01'.8 S 163° 17'.4 E

26° 20'.0 S 163° 15'.8 E

25° 30'.0 S 159° 56'.7 E

25° 30'.0 S 156° 36'.0 E.

Mariners are advised to navigate with caution in the area.

**Chart temporarily affected - Aus 4602 (INT 602) - Aus 4635 (INT 635) - Aus 4643 (INT 643)**

**919(P)/2017 AUSTRALIA - QUEENSLAND - Magnetic Island - Nelly Bay - Shoaling**  
Maritime Safety Queensland

Latest survey shows shoaler depths than those charted may exist in the entrance to Nelly Bay (19° 09'.8 S 146° 51'.4 E).

Mariners are advised to navigate with caution in the area.

Charts will be updated in due course.

**Chart which will be affected - Aus 256**

**920(T)/2017 AUSTRALIA - QUEENSLAND - Magnetic Island - Nelly Bay - Diving operations completed**  
*Former Notice - 294(T)/2017 is cancelled*  
Maritime Safety Queensland Notice 130(T)/2017

Cancel this notice on receipt.

**Chart formerly affected - Aus 256**

**921(T)/2017 AUSTRALIA - QUEENSLAND - Mooloolaba - Dredging**  
Maritime Safety Queensland Notice 436(T)/2017

The dredge *Saibai* is conducting dredging operations in the entrance channel (26° 40'.75 S 153° 07'.90 E).

The dredge will display appropriate lights and shapes and will monitor VHF Ch 16 and Ch 73. A floating pipeline exists from the dredge.

Mariners are advised to navigate with caution in the area.

**Chart temporarily affected - Aus 235**

**922(T)/2017 AUSTRALIA - QUEENSLAND - Point Lookout - Light buoy off station southeastwards**  
AMSA

The light buoy, *Fl(5)Y.20s* (27° 29'.59 S 153° 37'.96 E), is off station.

**Chart temporarily affected - Aus 814**

**923(T)/2017 AUSTRALIA - QUEENSLAND - Shoalwater Bay - Live firing**  
Maritime Safety Queensland Notice 406(T), 407(T)/2017

Live firing will be conducted in the Shoalwater Bay training area during the period 20 November to 11 December 2017.

A marine danger area extends to all internal waters bounded by the following positions:

22° 14'.76 S 150° 20'.31 E  
22° 10'.02 S 150° 30'.06 E  
22° 13'.58 S 150° 35'.51 E  
22° 06'.10 S 150° 41'.18 E  
22° 06'.05 S 150° 45'.07 E  
22° 19'.38 S 150° 49'.46 E  
22° 16'.35 S 150° 38'.10 E  
22° 15'.74 S 150° 37'.53 E  
22° 24'.33 S 150° 26'.87 E.

All waters, creeks, beaches and other areas within the declared marine danger area are not available for access.

There will be a safe anchorage available at Freshwater, Port Clinton, West Water Port Clinton, South Arm Port Clinton, Pearl Bay and Island Head Creek.

Mariners are advised to keep clear of this area throughout the above times.

**Chart temporarily affected - Aus 260 - Aus 261 - Aus 367 - Aus 822**

**924(T)/2017 AUSTRALIA - QUEENSLAND - Townsville - Ross River Channel - Depths charted; nav aids charted**  
*Former Notice* - 571(T)/2016 is cancelled  
 Australian Hydrographic Service

Cancel this notice on receipt.

**Chart formerly affected - Aus 257**

**925(T)/2017 AUSTRALIA - QUEENSLAND - Townsville - Ross River - Light buoy withdrawn**  
*Former Notice* - 190(T)/2015 is cancelled  
 Australian Hydrographic Service

Cancel this notice on receipt.

**Chart formerly affected - Aus 257**

**926(T)/2017 AUSTRALIA - QUEENSLAND - Townsville - West Channel - Light beacon destroyed**  
 Maritime Safety Queensland Notice 438(T)/2017

The east cardinal light beacon, *Q(3)10s 4m 3M* (19° 12'.06 S 146° 49'.25 E), has been destroyed; a special buoy, *Fl.Y.2.5s*, exists in situ.

**Chart temporarily affected - Aus 256 - Aus 827**

**927(T)/2017 PAPUA NEW GUINEA - Port Moresby - Wrecks charted**  
*Former Notice* - 143(T)/2016 is cancelled  
 National Maritime Safety Authority PNG

Cancel this notice on receipt.

**Chart formerly affected - Aus 621 - Aus 622**

**928(T)/2017 AUSTRALIA - TORRES STRAIT - Hammond Island - Bruce Point - Light buoy withdrawn**  
 Maritime Safety Queensland Notice 433(T)/2017

The starboard lateral light buoy, *Fl.G.3s* (10° 33'.59 S 142° 13'.28 E), has been temporarily withdrawn.

**Chart temporarily affected - Aus 299**

**929(T)/2017 AUSTRALIA - NORTHERN TERRITORY - Beagle Gulf - Drill rig**  
 Ship Agency Services

Drill rig *Noble Tom Prosser* is anchored in position 12° 11'.28 S 130° 35'.54 E.

**Chart temporarily affected - Aus 309 - Aus 722 - Aus 4721 (INT 721)**

**930(T)/2017 AUSTRALIA - NORTHERN TERRITORY - Joseph Bonaparte Gulf - Maintenance works completed; moorings removed**

*Former Notice* - 842(T)/2017 is cancelled  
 Bhagwan Marine

Cancel this notice on receipt.

**Chart formerly affected - Aus 316 - Aus 725**

**931(T)/2017 AUSTRALIA - NORTHERN TERRITORY - Muiron Islands - Drill rig northwards moved**  
*Former Notice - 619(T)/2017 is cancelled*  
 MODU ENSCO MS-1

Cancel this notice on receipt.

**Chart formerly affected - Aus 328 - Aus 744 - Aus 4723 (INT 723) - Aus 4725 (INT 725)**

**932(T)/2017 AUSTRALIA - TIMOR SEA - Vulcan Shoal - Drill rig northeastwards moved**  
*Former Notice - 758(T)/2017 is cancelled*  
 Ship Agency Services

Cancel this notice on receipt.

**Chart formerly affected - Aus 314 - Aus 319**

**933(T)/2017 AUSTRALIA - WESTERN AUSTRALIA - Barrow Island - Subsea operations completed eastwards**  
*Former Notice - 671(T)/2017 is cancelled*  
 Australian Maritime Safety Authority

Cancel this notice on receipt.

**Chart formerly affected - Aus 328**

**934(T)/2017 AUSTRALIA - WESTERN AUSTRALIA - Montebello Saddle - Drill rig**  
 MODU ENSCO MS-1

Drill rig *Enesco MS-1* is conducting drilling operations in position 20° 58'.00 S 114° 17'.73 E.

**Chart temporarily affected - Aus 328 - Aus 329 - Aus 4723 (INT 723) - Aus 4725 (INT 725)**

**935(T)/2017 AUSTRALIA - WESTERN AUSTRALIA - Onslow - Beadon Creek - Scientific instrument**  
 Department of Transport WA Notice 117/2017

A special light buoy, *Fl.Y*, exists in position 21° 38'.58 S 115° 07'.87 E.

**Chart temporarily affected - Aus 69**

**936(T)/2017 AUSTRALIA - WESTERN AUSTRALIA - Perth - Survey operations northwestwards**  
 Department of Transport WA Notice 118/2017

RV *Geo Resolution* towing a cable up to 3000m in length is conducting survey operations between the following positions:

31° 55'.6 S 115° 45'.2 E

31° 52'.9 S 115° 40'.8 E

31° 47'.9 S 115° 39'.3 E

31° 48'.3 S 115° 28'.5 E.

Vessels will display appropriate lights and shapes and will monitor VHF Ch 77 & Ch 16.

Mariners are advised to navigate with caution in the area. 1M clearance requested.

**Chart temporarily affected - Aus 112 - Aus 754**

**937(T)/2017 AUSTRALIA - WESTERN AUSTRALIA - Port Hedland - Dredging**

Pilbara Ports Authority Notice 21(T)/2017

The dredge *Charles Darwin* and support vessels *Reliance* and *Go Puriya* are conducting dredging operations in the inner harbour, the main shipping channel and in an area west of the shipping channel between No15 light beacon (20° 10'.41 S 118° 30'.49 E) and C3 light beacon (20°02'.26 118° 24'.90).

All vessels will display appropriate lights and shapes and will monitor VHF Ch 12.

Spoil will be deposited in the vicinity of the following positions:

20° 12'.60 S 118° 28'.10 E

20° 11'.95 S 118° 34'.80 E

19° 58'.12 S 118° 24'.53 E.

Mariners are advised to navigate with caution in the area.

**Chart temporarily affected - Aus 52 - Aus 53 - Aus 54 - Aus 739 - Aus 740****938(T)/2017 AUSTRALIA - WESTERN AUSTRALIA - Port Hedland - Dredging amended**

*Former Notice* - 713(T)/2017 is cancelled

Pilbara Ports Authority

Cancel this notice on receipt.

**Chart formerly affected - Aus 52 - Aus 53 - Aus 739 - Aus 740****939(T)/2017 AUSTRALIA - WESTERN AUSTRALIA - Rankin Bank - Drill rig**

*Former Notice* - 762(T)/2017 is cancelled

Woodside Energy Ltd

Drill rig *Ocean Apex* is conducting drilling operations in position 19° 45'.48 S 115° 47'.13 E.

**Chart temporarily affected - Aus 327 - Aus 4723 (INT 723)****940(T)/2017 AUSTRALIA - WESTERN AUSTRALIA - Rankin Bank - Mooring buoys**

Australian Offshore Solutions , Australian Maritime Safety Authority Auscoast Warning 201/2017

12 yellow mooring buoys, *Fl.3s*, exist within 1M radius of 19° 47'.7 S 115° 43'.4 E.

**Chart temporarily affected - Aus 327****941(T)/2017 AUSTRALIA - WESTERN AUSTRALIA - Yampi Sound - Ship to ship transfer completed**

*Former Notice* - 673(T)/2017 is cancelled

Department of Transport WA

Cancel this notice on receipt.

**Chart formerly affected - Aus 40 - Aus 41****942(T)/2017 AUSTRALIA - SOUTH AUSTRALIA - Port Adelaide - Light beacon restored**

*Former Notice* - 853(T)/2015 is cancelled

Department of Planning, Transport and Infrastructure SA

Cancel this notice on receipt.

**Chart formerly affected - Aus 130 - Aus 138**

**943(T)/2017 AUSTRALIA - VICTORIA - Port Fairy - Martin Point - Light relit**

*Former Notice* - 396(T)/2017 is cancelled  
Maritime Safety Victoria

Cancel this notice on receipt.

**Chart formerly affected - Aus 141**

**944(T)/2017 AUSTRALIA - VICTORIA - Port Phillip - Geelong - Point Richards Channel - Shoaling removed**

*Former Notice* - 812(T)/2015 is cancelled  
Victorian Regional Channels Authority

Cancel this notice on receipt.

**Chart formerly affected - Aus 157**

**945(T)/2017 AUSTRALIA - VICTORIA - Port Phillip - Corio Bay - Light buoy**

Victorian Regional Channels Authority Notice 263(T)/2017

The light beacon *F.Iso.G.3s No 5* (38° 06'.2S 144° 22'.7E) has been temporarily withdrawn; a light buoy *F.Iso.G.3s* exists in situ.

**Chart temporarily affected - Aus 153 - Aus 157**

**946(T)/2017 AUSTRALIA - BASS STRAIT - Ninety Mile Beach - Survey operations completed**

*Former Notice* - 121(T)/2017 is cancelled  
Exxon Mobil

Cancel this notice on receipt.

**Chart formerly affected - Aus 357 - Aus 487**

**947(T)/2017 AUSTRALIA - TASMANIA - Cape Barren Island - Scientific instruments recovered**

*Former Notice* - 166(T)/2016 is cancelled  
Institute for Marine and Antarctic Studies

Cancel this notice on receipt.

**Chart formerly affected - Aus 487 - Aus 798 - Aus 800**

**948(T)/2017 AUSTRALIA - TASMANIA - Devonport - Mersey River - Obstruction removed**

*Former Notice* - 855(T)/2016 is cancelled  
Marine and Safety Tasmania

Cancel this notice on receipt.

**Chart formerly affected - Aus 164**

**949(T)/2017 AUSTRALIA - TASMANIA - Hobart - Sullivans Cove - Light removed**

*Former Notice* - 587(T)/2016 is cancelled  
Marine and Safety Tasmania

Cancel this notice on receipt.

**Chart formerly affected - Aus 172**

**950(T)/2017 AUSTRALIA - TASMANIA - Hobart - Sullivans Cove - Harbour works completed**

*Former Notice* - 945(T)/2016 is cancelled  
Marine and Safety Tasmania

Cancel this notice on receipt.

**Chart formerly affected - Aus 172**

**951(T)/2017 AUSTRALIA - TASMANIA - Recherche Bay - Scientific instrument recovered**

*Former Notice* - 1055(T)/2016 is cancelled  
Marine and Safety Tasmania

Cancel this notice on receipt.

**Chart formerly affected - Aus 173 - Aus 174 - Aus 794 - Aus 795**

**952(T)/2017 AUSTRALIA - TASMANIA - River Derwent - Tasman Bridge - Works completed**

*Former Notice* - 1056(T)/2016 is cancelled  
Marine and Safety Tasmania

Cancel this notice on receipt.

**Chart formerly affected - Aus 171 - Aus 172**

II

IV

**HYDROGRAPHIC REPORTS**

NIL

### III

#### **NAVIGATION WARNINGS**

The Australian Hydrographic Service will no longer compile Section III of the Australian Notices to Mariners. For the most up to date navigation warnings please refer to:

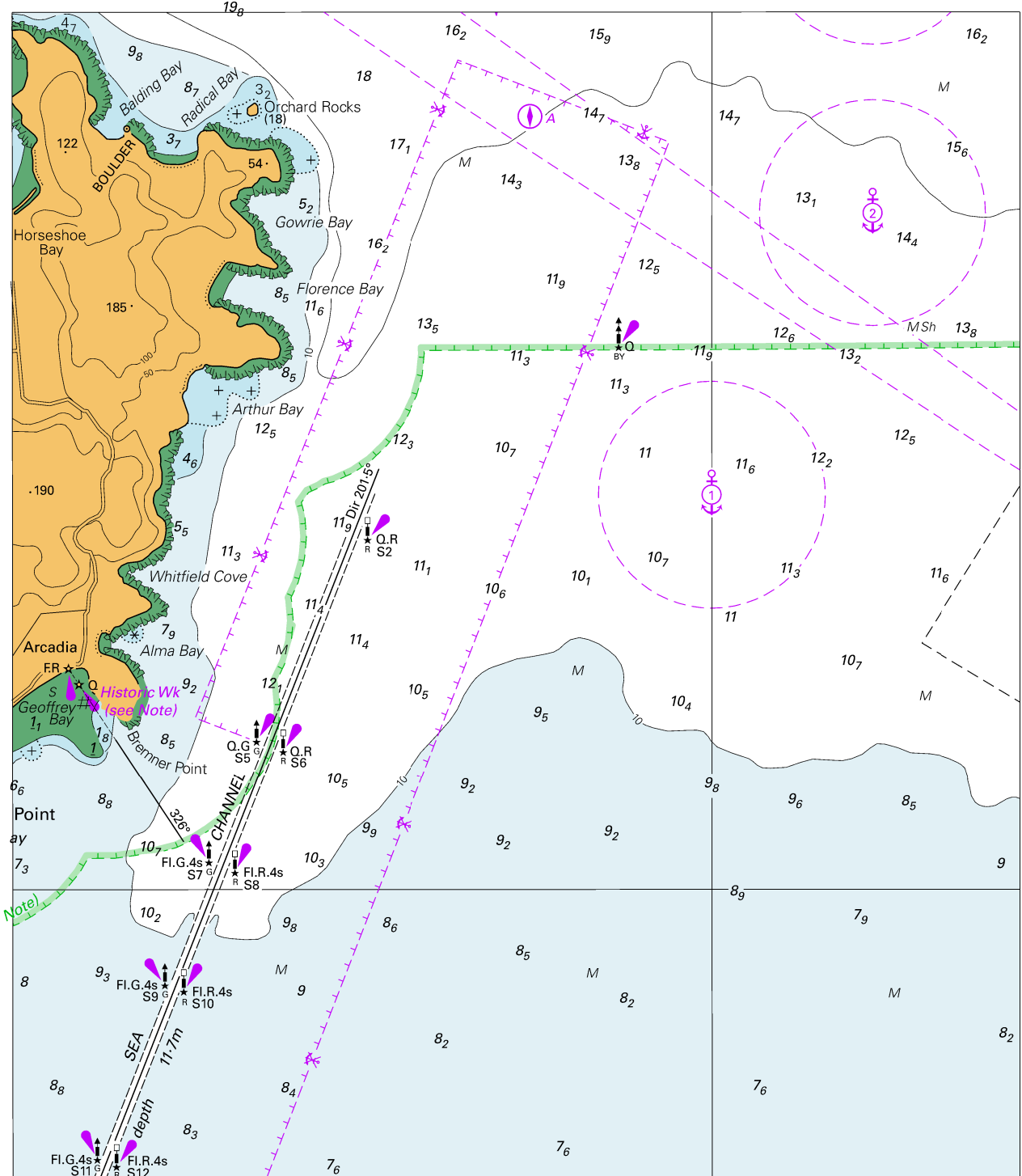
AMSA Navigation Warnings

<http://amsa.gov.au/search-and-rescue/distress-and-safety-comms/msi/msi-email/index.asp>

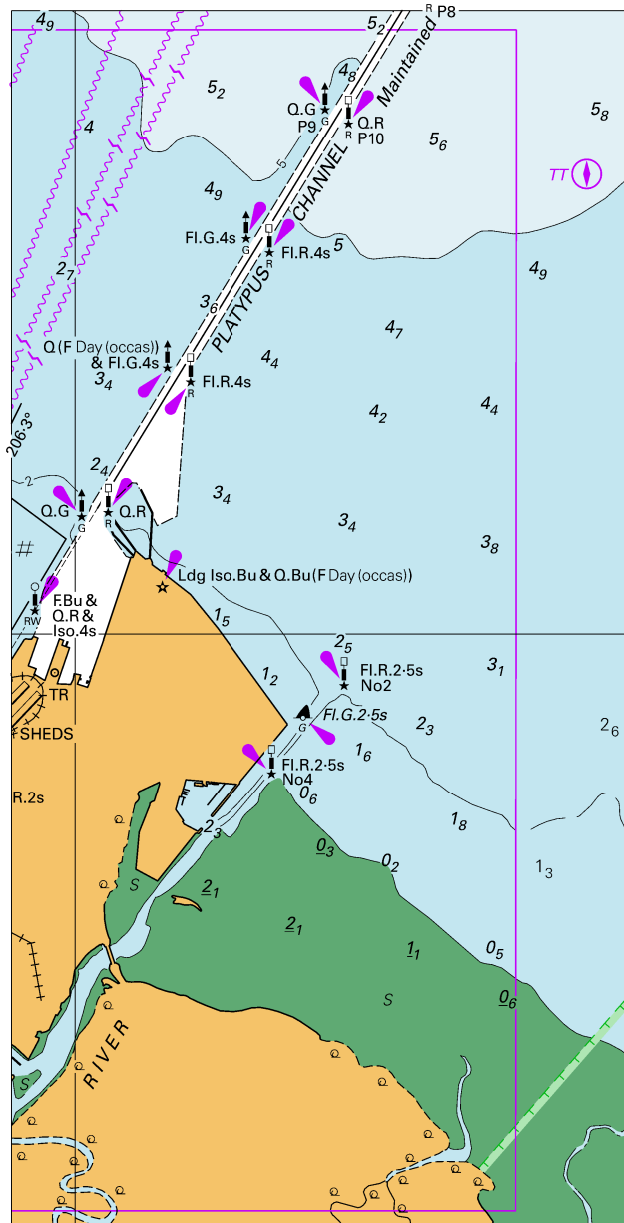
New Zealand Notices to Mariners (Navarea XIV warnings)

<http://www.linz.govt.nz/sea/maritime-safety/notices-mariners>

To accompany Australian Notice to Mariners 897/2017



To accompany Australian Notice to Mariners 897/2017

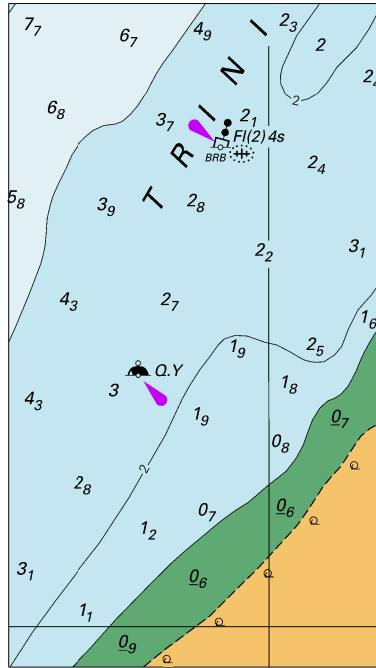


Block B for Chart Aus 256

(81.5 x 160.5mm)

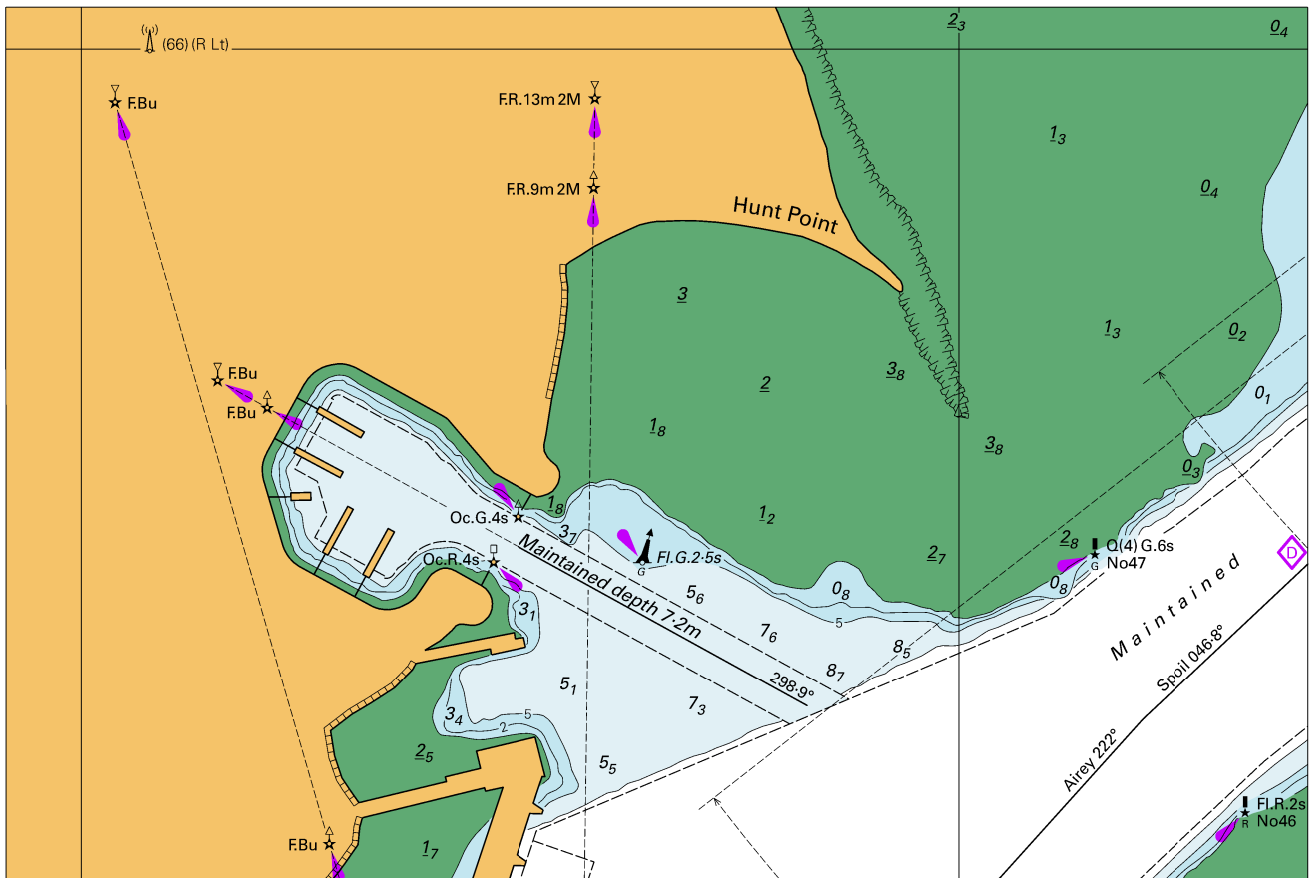
© Commonwealth of Australia 2017

To accompany Australian Notice to Mariners 898/2017



© Commonwealth of Australia 2017  
Block for Chart Aus 264 (49.4 x 87.7mm)

To accompany Australian Notice to Mariners 901/2017

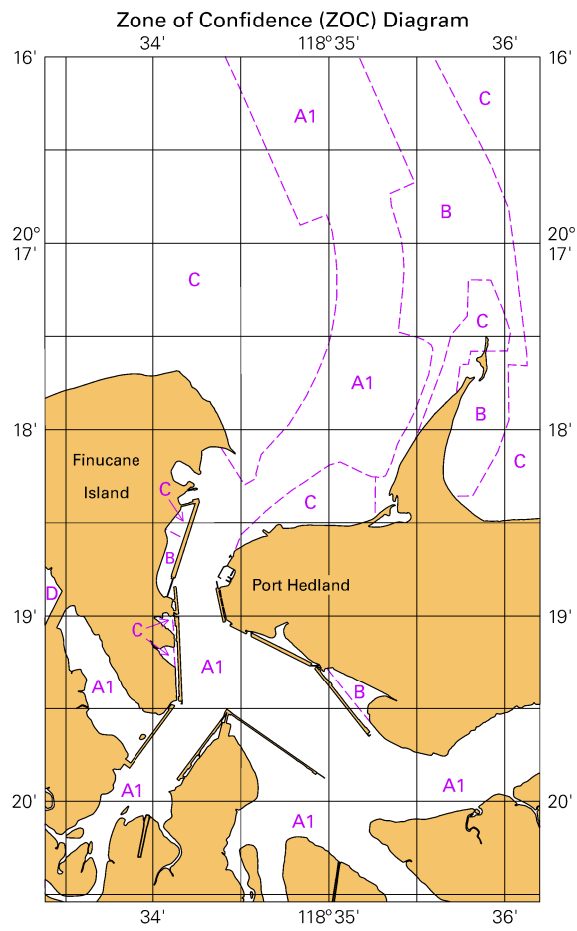


Block A for Chart Aus 54

© Commonwealth of Australia 2017

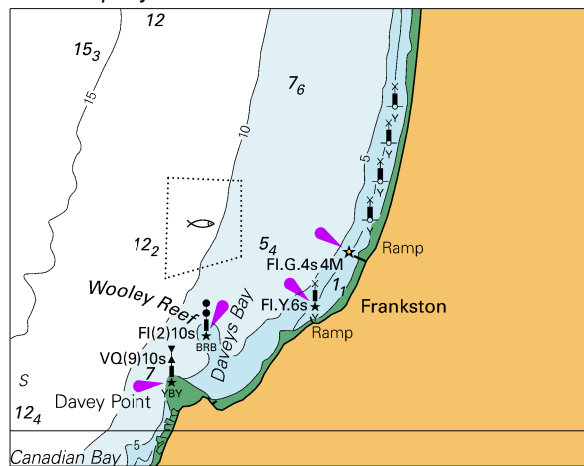
(172.2 x 115.4mm)

To accompany Australian Notice to Mariners 901/2017



© Commonwealth of Australia 2017  
**Block B for Chart Aus 54** (65.2 x 111.7mm)

To accompany Australian Notice to Mariners 906/2017



© Commonwealth of Australia 2017  
Block for Chart Aus 143 (77.2 x 60.4mm)