



# AUSTRALIAN NOTICES TO MARINERS

**Notices 849 - 890**

## **Cumulative List – October 2017 List of Temporary and Preliminary Notices in force**

Published fortnightly by the Australian Hydrographic Service



Australian Notices to Mariners are the authority for correcting charts and publications published by the Australian Hydrographic Service covering Australia, Papua New Guinea, Solomon Islands, Australian Antarctic Territory and Timor-Leste.

Commodore B.K. BRACE RAN  
*Hydrographer of Australia*

---

### **SECTIONS.**

- I. Australian Notices to Mariners, including blocks and notes.**
- II. Hydrographic Reports.**
- III. Navigational Warnings.**

### **SUPPLEMENTS.**

- I. Tracings**
- II. Cumulative List of Australian Notices to Mariners.**
- III. Cumulative List of Temporary and Preliminary Australian Notices to Mariners.**
- IV. Temporary and Preliminary Notices in force.**
- V. Amendments to Admiralty List of Lights and Fog Signals (Vol K), Radio Signals (NP 281(2), 282, 283(2), 285, 286(4)) and Sailing Directions (NP 9, 13, 14, 15, 33, 34, 35, 36, 39, 44, 51, 60, 61, 62, 100, 136).**

---

© Commonwealth of Australia 2017

This work is copyright. Apart from any use permitted under the Copyright Act 1968, no part may be reproduced by any process, adapted, communicated or commercially exploited without prior written permission from The Commonwealth represented by the Australian Hydrographic Service.

## **IMPORTANT NOTICE**

This edition of Notices to Mariners includes all significant information affecting AHS products which the AHS has become aware of since the last edition. All reasonable efforts have been made to ensure the accuracy and completeness of the information, including third party information, on which these updates are based. The AHS regards third parties from which it receives information as reliable, however the AHS cannot verify all such information and errors may therefore exist. The AHS does not accept liability for errors in third party information.

---

## **GENERAL INSTRUCTIONS**

The substance of these notices should be inserted on the charts affected.

Bearings are referred to the true compass and are reckoned clockwise from North; those relating to lights are given as seen by an observer from seaward.

Positions quoted in notices relate to WGS84 which is the horizontal datum for all charts produced by the Australian Hydrographic Service.

The range quoted for a light is its nominal range.

Depths are with reference to the chart datum of each chart. Heights are above mean high water springs or mean higher high water, as appropriate.

The capital letter (P) or (T) after the number of any notice denotes a preliminary or temporary notice respectively, which are contained separately at the end of the permanent notices.

---

## **REPORTING OF DANGERS**

Mariners are particularly requested to notify the AUSTRALIAN HYDROGRAPHIC SERVICE, Locked Bag 8801 Wollongong, NSW 2500 (Fax 02-4223 6599, e-mail [datacentre@hydro.gov.au](mailto:datacentre@hydro.gov.au) or, alternatively by filling in and submitting the [Hydrographic Notes](#) forms located on the web site – [www.hydro.gov.au](http://www.hydro.gov.au)), immediately on the discovery of new dangers or suspected dangers to navigation. For changes or defects in aids to navigation notify AusSAR (Fax 02-6230 6868 or email [rccaus@amsa.gov.au](mailto:rccaus@amsa.gov.au)).

---

## **AUTHORISED USE**

Copies of Australian notices are available free of charge from the Australian Hydrographic Service (AHS) website ([www.hydro.gov.au](http://www.hydro.gov.au)) and through the eNotices (email) service ([www.hydro.gov.au/enotices/enotices.htm](http://www.hydro.gov.au/enotices/enotices.htm)).

Individual Notices may be copied for the purpose of inserting Notice substance on official charts and publications. Paper copies may be printed by chart agents and distributed to customers on a cost recovery basis. Participating chart agents are listed on the AHS website as providing a 'Paper Notices to Mariners' service ([www.hydro.gov.au/webapps/jsp/agents/agents-list.jsp](http://www.hydro.gov.au/webapps/jsp/agents/agents-list.jsp)). Copies of the notices may not be sold for profit without prior written agreement.

## NUMERICAL INDEX OF NOTICES TO MARINERS

### Edition No 21

Notices	Aus Chart, INT Chart, ENC Cell, AHP, BA Pubs
849	Products - New Charts, New Editions, Withdrawn Charts
850	Aus 810
851	Aus 263
852	Aus 230
853	Aus 490
854	Aus 257
855	Aus 309, 722
856	Aus 17, 718, 719, 4721, INT 721
857	Aus 719
858	Aus 64, 69, 743
859	Aus 55
860	Aus 117
861	Aus 328
862	Aus 69
863	Aus 118
864	Aus 130, 137, 781
865	Aus 778
866	Aus 158
867	Aus 795, 796, 4601, 4644, 4709, INT 601, 644, 709
868	SLB 101
869	Cumulative List of Australian Notices to Mariners - October 2017
870(T)	Aus 148, 197, 198, 349, 357, 487, 489, 787, 789, 802, 808, 4601, 4644, 4709, 4728, INT 601, 644, 709, 728
871(T)	Aus 230
872(P)	Aus 270, 280, 281, 833, 834
873(T)	Aus 235
874(T)	Aus 819
875(T)	Aus 253, 269
876(T)	Aus 257
877(T)	Aus 674, 677
878(T)	Aus 299
879(T)	Aus 26, 28, AX 00026T
880(T)	Aus 17, 718
881(T)	Aus 325, 326, 739
882(T)	Aus 111, 112, 117, 754
883(T)	Aus 64, 69, 743
884(T)	Aus 4708, 4714, 4723, INT 708, 714, 723, AX 04708U, 04714U, 04723U
885(T)	Aus 4708, 4723, INT 708, 723
886(T)	Aus 144, 150, 154, 158
887(T)	Aus 154
888(T)	Aus 173
889(T)	Aus 790
890(T)	TEMPORARY AND PRELIMINARY NOTICES

## NUMERICAL INDEX OF CHARTS AFFECTED

### Edition No 21

Aus Chart	Notices
Aus 17	856, 880(T)
Aus 26	879(T)
Aus 28	879(T)
Aus 55	859
Aus 64	858, 883(T)
Aus 69	858, 862, 883(T)
Aus 111	882(T)
Aus 112	882(T)
Aus 117	860, 882(T)
Aus 118	863
Aus 130	864
Aus 137	864
Aus 144	886(T)
Aus 148	870(T)
Aus 150	886(T)
Aus 154	886(T), 887(T)
Aus 158	866, 886(T)
Aus 173	888(T)
Aus 197	870(T)
Aus 198	870(T)
Aus 230	852, 871(T)
Aus 235	873(T)
Aus 253	875(T)
Aus 257	854, 876(T)
Aus 263	851
Aus 269	875(T)
Aus 270	872(P)
Aus 280	872(P)
Aus 281	872(P)
Aus 299	878(T)
Aus 309	855
Aus 325	881(T)
Aus 326	881(T)
Aus 328	861
Aus 349	870(T)
Aus 357	870(T)
Aus 487	870(T)
Aus 489	870(T)
Aus 490	853
Aus 674	877(T)
Aus 677	877(T)
Aus 718	856, 880(T)
Aus 719	856, 857
Aus 722	855
Aus 739	881(T)
Aus 743	858, 883(T)
Aus 754	882(T)
Aus 778	865
Aus 781	864
Aus 787	870(T)
Aus 789	870(T)
Aus 790	889(T)
Aus 795	867
Aus 796	867

Aus Chart	Notices
Aus 802	870(T)
Aus 808	870(T)
Aus 810	850
Aus 819	874(T)
Aus 833	872(P)
Aus 834	872(P)
Aus 4601	867, 870(T)
Aus 4644	867, 870(T)
Aus 4708	884(T), 885(T)
Aus 4709	867, 870(T)
Aus 4714	884(T)
Aus 4721	856
Aus 4723	884(T), 885(T)
Aus 4728	870(T)
AX 00026T	879(T)
AX 04708U	884(T)
AX 04714U	884(T)
AX 04723U	884(T)
SLB 101	868

INT Chart	Notices
INT 601	867, 870(T)
INT 644	867, 870(T)
INT 708	884(T), 885(T)
INT 709	867, 870(T)
INT 714	884(T)
INT 721	856
INT 723	884(T), 885(T)
INT 728	870(T)

**849 AUSTRALIA - Products - New Charts, New Editions, Withdrawn Charts**

Australian Hydrographic Service , UKHO

**New Charts**

Chart	Title and Geographical limits	Scale	Publication Date	Remarks
NIL				

**New Electronic Navigation Chart (Aus ENC)**

Cell Name	Title	Publication Date	Remarks
NIL			

**New Editions and Withdrawn Charts**

Chart	Title	Scale	Publication Date	Remarks
NIL				

**Australian National Tide Tables 2018**

AHP No	Title	Recommended retail price (incl GST)	Remarks
AHP 114	Australian National Tide Tables 2018	\$59.95	Electronic Tide Tables (AusTides 2018) for Australia, Antarctica, Papua New Guinea, Solomon Islands and Timor-Leste. Provides tidal data for 2017 and 2018. Available from accredited distribution agents.

**Admiralty publication**

NP No	Title	Date	Remarks
NP286(4)	ADMIRALTY List of Radio Signals, Pilot Services, Vessel Traffic Services and Port Operations. Indian sub-continent, South East Asia and Australasia.	19/10/2017	The 2016/17 Edition of NP286(4) is cancelled.

**Chart permanently withdrawn**

Charts listed above as withdrawn no longer meet chart carriage requirements and should be marked as "superseded" and replaced with the new chart/ new edition listed prior to passage through the area covered by the new chart.

When placing orders with a chart agent between notice of forthcoming edition and its publication, mariners should advise whether their order pertains to the current edition or the new edition.

For further details refer to the AHS website at [www.hydro.gov.au](http://www.hydro.gov.au) for new edition and new chart stock arrival information.

**850 AUSTRALIA - NEW SOUTH WALES - Port Stephens - Providence Bay - Light buoys**

Huon Aquaculture Group Limited

**Aus 810 [443/2017]**

Amend	light buoy to Q	32° 38'.8 S	152° 16'.9 E
	light buoy to Q(3)10s	32° 39'.1 S	152° 17'.2 E
	light buoy to Q(6)+LFI.15s	32° 39'.5 S	152° 16'.7 E
	light buoy to Q(9)15s	32° 39'.2 S	152° 16'.4 E

**851 AUSTRALIA - QUEENSLAND - Cairns - Depths**

Ports North

**Aus 263 [814/2017]**

Insert	depth, 1,m	16° 53'.709 S	145° 47'.745 E
Delete	depth, 1 <sub>9</sub> m	16° 53'.71 S	145° 47'.75 E

**852 AUSTRALIA - QUEENSLAND - Gold Coast Seaway - Light buoy**

Australian Hydrographic Service

**Aus 230 [816/2017]**Move light buoy  
to27° 56'.45 S 153° 24'.84 E  
27° 56'.451 S 153° 24'.895 E**853 AUSTRALIA - QUEENSLAND - Lady Musgrave Island - Wreck**

Maritime Safety Queensland Notice 414/2017

**Aus 490 [495/2017]**

Insert safe clearance depth, 55m, enclosed by danger circle with legend, Wk

23° 48'.40 S 152° 28'.80 E

**854 AUSTRALIA - QUEENSLAND - Townsville - Wreck dispersed***Former Notice - 925(T)/2014 is cancelled*

Maritime Safety Queensland

**Aus 257 [NE 22/9/2017]**

Delete wreck

19° 14'.67 S 146° 49'.61 E

**855 AUSTRALIA - NORTHERN TERRITORY - Beagle Gulf - Light buoy withdrawn**

Australian Institute of Marine Science

**Aus 309 [136/2017]**

Delete light buoy

12° 06'.5 S 130° 35'.3 E

**Aus 722 [600/2017]**

Delete light buoy

12° 06'.5 S 130° 35'.3 E

**856 AUSTRALIA - NORTHERN TERRITORY - Cuthbert Point - Depths**HMAS *Melville***Aus 17 [958/2016]**

Insert	depth, $1_4m$ , enclosed by contour	12° 02'.37 S	134° 13'.00 E
	contour, between	12° 02'.49 S	134° 12'.56 E
		12° 02'.68 S	134° 12'.72 E
Delete	depth, $3_2m$	12° 02'.5 S	134° 13'.0 E
	contour, between	12° 02'.5 S	134° 12'.6 E
		12° 01'.8 S	134° 12'.7 E
		12° 02'.7 S	134° 12'.7 E
	depth, $5_4m$	12° 02'.3 S	134° 12'.8 E

**Aus 718 [958/2016]**

Insert	depth, $1_4m$ , enclosed by contour	12° 02'.37 S	134° 13'.00 E
	depth, $13_4m$ , enclosed by contour	11° 37'.46 S	134° 01'.92 E
	depth, $12_3m$ , enclosed by contour	11° 38'.62 S	134° 02'.09 E
	depth, $15_7m$ , enclosed by contour	11° 38'.99 S	134° 04'.02 E
	depth, $15_2m$ , enclosed by contour	11° 38'.53 S	134° 04'.80 E
	depth, $9_6m$ , enclosed by contour	11° 37'.02 S	133° 49'.35 E
	contour, between	12° 02'.49 S	134° 12'.56 E
		12° 02'.68 S	134° 12'.72 E
Delete	depth, $3_2m$	12° 02'.5 S	134° 13'.0 E
	depth, $13_5m$	11° 37'.2 S	133° 49'.5 E
	contour, between	12° 02'.5 S	134° 12'.6 E
		12° 01'.8 S	134° 12'.7 E
		12° 02'.7 S	134° 12'.7 E

**Aus 719 [344/2016]**

Insert	depth, $9_6m$ , enclosed by contour	11° 37'.02 S	133° 49'.35 E
Delete	depth, $13_5m$	11° 37'.2 S	133° 49'.5 E

**Aus 4721 (INT 721) [730/2017]**

Insert	depth, $9_6m$	11° 37'.0 S	133° 49'.4 E
Delete	depth, 20m	11° 35'.0 S	133° 53'.0 E

**857 AUSTRALIA - NORTHERN TERRITORY - Goulburn Islands - Depths**HMAS *Benalla***Aus 719 [856/2017]**

Insert	depth, $5_3m$ , enclosed by contour	11° 33'.31 S	133° 23'.25 E
	depth, $8m$ , enclosed by contour	11° 33'.39 S	133° 24'.50 E

**858 AUSTRALIA - WESTERN AUSTRALIA - Ashburton - Depths**

Pilbara Ports Authority , Chevron Australia Pty Ltd

**Aus 64 [701/2017]**

Insert	depth, 9 <sub>8</sub> m, enclosed by contour	21° 33'.22 S	115° 01'.99 E
	depth, 9 <sub>8</sub> m, enclosed by contour	21° 33'.25 S	115° 01'.79 E
	depth, 2 <sub>5</sub> m	21° 34'.25 S	115° 01'.79 E
	depth, 1 <sub>3</sub> m, and extend contour E to enclose	21° 40'.42 S	114° 59'.87 E
	depth, 12 <sub>5</sub> m	21° 31'.41 S	115° 02'.54 E

Replace	depth, 9 <sub>8</sub> m, with depth, 9 <sub>1</sub> m	21° 32'.3 S	115° 03'.2 E
	depth, 13 <sub>1</sub> m, with depth, 12 <sub>8</sub> m	21° 31'.1 S	115° 02'.9 E

Delete	depth, 2 <sub>5</sub> m	21° 34'.2 S	115° 01'.8 E
	depth, 1 <sub>3</sub> m	21° 40'.4 S	114° 59'.8 E

**Aus 69 (plan, Port of Ashburton) [607/2017]**

Insert	depth, 1 <sub>3</sub> m	21° 40'.415 S	114° 59'.870 E
Delete	depth, 1 <sub>6</sub> m	21° 40'.41 S	114° 59'.89 E

**Aus 743 [729/2017]**

Replace	depth, 10m, with depth, 9 <sub>8</sub> m	21° 33'.3 S	115° 02'.1 E
---------	--	-------------	--------------

**859 AUSTRALIA - WESTERN AUSTRALIA - Delambre Reef - Buoy withdrawn**

Department of Transport WA

**Aus 55 [734/2017]**

Delete	buoy	20° 25'.7 S	117° 12'.8 E
--------	------	-------------	--------------

**860 AUSTRALIA - WESTERN AUSTRALIA - Fremantle - Parmelia Bank - Topmarks**

Fremantle Ports

**Aus 117 [699/2017]**

Insert	port lateral topmark	32° 07'.102 S	115° 42'.065 E
	starboard lateral topmark	32° 07'.119 S	115° 41'.965 E

**861 AUSTRALIA - WESTERN AUSTRALIA - Montebello Islands - Well northwestwards**

NOPSEMA Notice A572101

**Aus 328 [729/2017]**

Insert	restricted area with radius 0.5M, centred on	20° 01'.82 S	115° 12'.11 E
--------	--	--------------	---------------

**862 AUSTRALIA - WESTERN AUSTRALIA - Port of Ashburton - Piles withdrawn**

Chevron Australia Pty Ltd

**Aus 69 (plan, Port of Ashburton) [858/2017]**

Delete	pile	21° 41'.008 S	115° 00'.647 E
	pile	21° 41'.008 S	115° 00'.657 E
	pile	21° 41'.009 S	115° 00'.659 E
	pile	21° 41'.009 S	115° 00'.662 E
	pile	21° 41'.009 S	115° 00'.668 E

**863 AUSTRALIA - WESTERN AUSTRALIA - Torbay - Light buoy**

Department of Transport WA Notice 112/2017

**Aus 118 [815/2016]**

Insert	special spherical light buoy, F(5)Y.20s, without topmark	35° 04'.02 S	117° 46'.56 E
--------	--	--------------	---------------

**864 AUSTRALIA - SOUTH AUSTRALIA - Port Adelaide - North Haven - Depths***Former Notice - 484(T)/2017 is cancelled*

Department of Planning, Transport and Infrastructure SA

**Aus 130 [737/2017]**

Insert	accompanying block	34° 47'.5 S	138° 28'.7 E
--------	--------------------	-------------	--------------

**Aus 137 [737/2017]**

Insert	accompanying block	34° 47'.5 S	138° 28'.6 E
--------	--------------------	-------------	--------------

**Aus 781 [736/2017]**

Insert	depth, $0_m$ , and extend contour SE to enclose	34° 47'.51 S	138° 28'.70 E
--------	---	--------------	---------------

**865 AUSTRALIA - SOUTH AUSTRALIA - Yarraville Shoals - Buoys**

Australian Maritime Safety Authority

**Aus 778 [738/2017]**

Replace	buoy desig, Y1 with, Y2	33° 16'.6 S	137° 32'.3 E
	buoy desig, Y3 with, Y4	33° 15'.2 S	137° 32'.9 E
	buoy desig, Y2 with, Y1	33° 15'.9 S	137° 32'.8 E

**Aus 778 (plan, Yarraville Shoals) [738/2017]**

Replace	buoy desig, Y1 with, Y2	33° 16'.6 S	137° 32'.3 E
	buoy desig, Y3 with, Y4	33° 15'.2 S	137° 32'.9 E
	buoy desig, Y2 with, Y1	33° 15'.9 S	137° 32'.8 E

**866 AUSTRALIA - VICTORIA - Port Phillip - Blairgowrie - Beacons**

Australian Hydrographic Service

**Aus 158 [658/2017]**

Insert	special beacon, with topmark	38° 21'.55 S	144° 47'.34 E
--------	------------------------------	--------------	---------------

Delete	beacon	38° 21'.51 S	144° 46'.97 E
	beacon	38° 21'.61 S	144° 47'.55 E
	beacon	38° 21'.74 S	144° 48'.11 E
	beacon	38° 21'.86 S	144° 48'.71 E

**867 AUSTRALIA - TASMANIA - South East Cape to Tasman Escarpment - Depths**

CSIRO

**Aus 795 [788/2017]**

Insert	depth, 78m	43° 42'.00 S	147° 17'.04 E
	depth, 152m	44° 00'.54 S	147° 09'.24 E
	depth, 148m	44° 02'.33 S	147° 07'.91 E
	depth, 142m	44° 05'.10 S	147° 07'.25 E
	depth, 252m, and extend contour N to enclose	44° 06'.88 S	147° 06'.53 E
	depth, 739m	44° 11'.41 S	147° 11'.33 E
	depth, 772m	44° 11'.69 S	147° 12'.62 E

Replace	depth, 120m, with depth, 114m	43° 45'.5 S	147° 15'.3 E
	depth, 503m, with depth, 498m, enclosed by contour	44° 10'.2 S	147° 04'.8 E
	depth, 859m, with depth, 823m	44° 07'.4 S	147° 23'.0 E
	depth, 976m, with depth, 950m	44° 12'.1 S	147° 19'.1 E
	depth, 804m, with depth, 763m	44° 10'.0 S	147° 13'.2 E
	depth, 940m, with depth, 898m	44° 15'.1 S	147° 10'.7 E
	depth, 918m, with depth, 844m	44° 18'.6 S	147° 05'.0 E
	depth, 902m, with depth, 870m	44° 09'.9 S	147° 10'.1 E
	depth, 1193m, with depth, 1057m	44° 18'.4 S	147° 16'.8 E

Delete	depth, 95m	43° 42'.3 S	147° 16'.7 E
	depth, 167m	44° 00'.3 S	147° 09'.8 E
	depth, 172m	44° 03'.0 S	147° 08'.5 E
	depth, 285m	44° 07'.0 S	147° 06'.5 E
	depth, 771m	44° 11'.3 S	147° 11'.3 E
	depth, 912m	44° 11'.6 S	147° 12'.6 E
	depth, 166m	44° 05'.5 S	147° 08'.6 E
	depth, 167m	44° 04'.9 S	147° 05'.5 E

**Aus 796 [660/2017]**

Insert	depth, 78m	43° 42'.00 S	147° 17'.04 E
Replace	depth, 120m, with depth, 114m	43° 45'.5 S	147° 15'.3 E
Delete	depth, 95m	43° 42'.3 S	147° 16'.7 E

**Aus 4601 (INT 601) [721/2017]**

Insert	depth, 142m	44° 05'.1 S	147° 07'.3 E
	depth, 3440m, enclosed by contour	47° 21'.8 S	143° 21'.6 E
	depth, 640m, and extend contour S to enclose	44° 15'.5 S	147° 07'.0 E
Replace	depth, 3937m, with depth, 3779m	46° 53'.0 S	142° 44'.0 E
Delete	depth, 1307m	44° 14'.0 S	147° 23'.0 E
	depth, 166m	44° 05'.5 S	147° 08'.6 E

**Aus 4644 (INT 644) [660/2017]**

Insert	depth, 142m	44° 05'.1 S	147° 07'.3 E
Delete	depth, 167m	44° 00'.3 S	147° 09'.8 E

**Aus 4709 (INT 709) [368/2017]**

Insert	depth, 3440m, enclosed by contour	47° 21'.8 S	143° 21'.6 E
Replace	depth, 3937m, with depth, 3779m	46° 53'.0 S	142° 44'.0 E

**868 SOLOMON ISLANDS - Honiara - Depths**

Australian Hydrographic Service

**SLB 101 (plan, Honiara) [NC 11/8/2017]**

Amend	legend to (10.8m Rep 2016)	09° 25'.62 S	159° 57'.60 E
-------	----------------------------	--------------	---------------

**869 AUSTRALIA - Cumulative List of Australian Notices to Mariners - October 2017**

Australian Hydrographic Service

The Cumulative List of Australian Notices to Mariners - October 2017 is issued as an [accompanying supplement](#). It lists all permanent notices affecting charts in the Area of Australian Charting Responsibility published in the preceding two years since Edition 21 of 2015 dated 23 October 2015, and includes Edition 21 of 2017 dated 20 October 2017. It will be revised in April 2018.

A supplement is available on the website which is revised fortnightly.

**870(T)/2017 AUSTRALIA - NEW SOUTH WALES - VICTORIA - Sydney to Bass Strait - Survey operations completed**

Former Notice - 743(T)/2017 is cancelled

Australian Maritime Safety Authority CAN AUSCOAST 172/2017

Cancel this notice on receipt.

**Chart formerly affected - Aus 148 - Aus 197 - Aus 198 - Aus 349 - Aus 357 - Aus 487 - Aus 489 - Aus 787 - Aus 789 - Aus 802 - Aus 808 - Aus 4601 (INT 601) - Aus 4644 (INT 644) - Aus 4709 (INT 709) - Aus 4728 (INT 728)**

**871(T)/2017 AUSTRALIA - QUEENSLAND - Gold Coast - North Channel - Shoaling**

Former Notice - 145(T)/2017 is cancelled

Maritime Safety Queensland

Shoaling exists in the vicinity of the following positions:

<i>Position</i>	<i>Least Depth</i>
27° 55'.74 S 153° 25'.11 E	3.1m
27° 55'.23 S 153° 24'.60 E	1.6m

Mariners are advised to navigate with caution in the area.

**Chart temporarily affected - Aus 230**

**872(P)/2017 AUSTRALIA - QUEENSLAND - LADS Passage - Shoaling**

LADS Flight

Latest survey shows shoaler depths than those charted may exist east of the two-way route, between Osborne Reef (13° 04'.9 S 143° 39'.5 E) and Clack Reef (14° 04'.0 S 144° 14'.5 E).

Charts will updated in due course.

**Chart which will be affected - Aus 270 - Aus 280 - Aus 281 - Aus 833 - Aus 834**

**873(T)/2017 AUSTRALIA - QUEENSLAND - Mooloolaba - Shoaling**

Maritime Safety Queensland Notice 416/2017

A shoal patch exists from the end of the eastern breakwater (26° 40'.74 S 153° 07'.95 E) extending in a westerly direction towards the centreline of the channel with a least depth of 1.3m in the vicinity of position 26° 40'.76 S 153° 07'.93 E.

Mariners are advised to navigate with caution in the area.

**Chart temporarily affected - Aus 235**

**874(T)/2017 AUSTRALIA - QUEENSLAND - One Tree Island - Scientific instrument**

Australian Institute of Marine Science

A spherical light buoy, *Fl(4)Y.19s*, exists in position 23° 29'.08 S 152° 10'.25 E.

**Chart temporarily affected - Aus 819**

**875(T)/2017 AUSTRALIA - QUEENSLAND - Shute Harbour - Light buoys**

Maritime Safety Queensland Notice 410(T), 411(T)/2017

The port lateral light beacon, *Fl.R.2.5s No6* (20° 17'.98 S 148° 47'.16 E), has been destroyed; port lateral light buoy, *Fl.R.2.5s*, exists in situ.

The east cardinal light beacon, *Q(3)10s* (20° 17'.25 S 148° 48'.14 E), has been destroyed; east cardinal light buoy, *Q(3)10s*, exists in situ.

**Chart temporarily affected - Aus 253 - Aus 269**

**876(T)/2017 AUSTRALIA - QUEENSLAND - Townsville - Stuart Creek - Wreck dispersed**

*Former Notice* - 1061(T)/2013 is cancelled  
Maritime Safety Queensland

Cancel this notice on receipt.

**Chart formerly affected - Aus 257**

**877(T)/2017 PAPUA NEW GUINEA - Kimbe - Light beacon unlit**

National Maritime Safety Authority PNG Notice 13(T)/2017

The light beacon, *Fl(3)G.9s 6m 4M No4* (5° 32'.66 S 150° 09'.07 E), is unlit.

**Chart temporarily affected - Aus 674 - Aus 677**

**878(T)/2017 AUSTRALIA - TORRES STRAIT - Hammond Island - Bruce Point - Harbour works; dredging**

Maritime Safety Queensland

Harbour works and dredging including construction of a breakwater, pontoons and piling are in progress in the vicinity of position 10° 33'.60 S 142° 13'.26 E.

Mariners are advised to navigate with caution in the area.

**Chart temporarily affected - Aus 299**

**879(T)/2017 AUSTRALIA - NORTHERN TERRITORY - Darwin - Middle Ground to Bladin Point - Harbour works completed; obstruction removed**

*Former Notices* - 790(T)/2014, 143(T)/2015 are cancelled  
Department of Infrastructure, Planning and Logistics NT

Cancel this notice on receipt.

**Chart formerly affected - Aus 26 - Aus 28 - AX 00026T**

**880(T)/2017 AUSTRALIA - NORTHERN TERRITORY - Maningrida to Hawkesbury Point - Shoaling charted**

*Former Notice* - 183(P)/2017 is cancelled  
HMAS *Melville*

Cancel this notice on receipt.

**Chart formerly affected - Aus 17 - Aus 718**

**881(T)/2017 AUSTRALIA - WESTERN AUSTRALIA - Bedout Island - Scientific instruments northwestwards**

RPS MetOcean

Scientific instruments exist as follows:

<i>Position</i>	<i>Remarks</i>
18° 41'.37 S 118° 44'.51 E	6m below surface
18° 45'.70 S 118° 47'.70 E	111m below surface
18° 50'.40 S 118° 51'.90 E	special pillar light buoy, Q(5)Y.20s
18° 50'.78 S 118° 51'.50 E	special spherical light buoy, Q(5)Y.20s
19° 14'.74 S 118° 43'.15 E	71m below surface
19° 31'.14 S 118° 43'.80 E	31m below surface

**Chart temporarily affected - Aus 325 - Aus 326 - Aus 739**

**882(T)/2017 AUSTRALIA - WESTERN AUSTRALIA - Direction Bank to Garden Island - Military exercise**  
Department of Defence

Dived operations with a manned submersible and/or ROV will be conducted as follows:

<i>Date</i>	<i>Position</i>
05/11/2017	32° 10'.46 S 115° 41'.34 E
06/11/17 - 09/11/17	31° 45'.00 S 115° 11'.59 E
12/11/17	31° 45'.00 S 115° 11'.59 E
13/11/17	31° 49'.43 S 115° 01'.06 E
14/11/17 - 17/11/17	32° 08'.00 S 115° 15'.40 E

An exclusion zone with a 915m radius exists for each position.

Support vessels *MV Besant* and *MV Stoker* will be on site and display appropriate lights and shapes.

Mariners are advised to navigate with caution in the area.

**Chart temporarily affected - Aus 111 - Aus 112 - Aus 117 - Aus 754**

**883(T)/2017 AUSTRALIA - WESTERN AUSTRALIA - Port of Ashburton - Harbour works completed**  
*Former Notice* - 811(T)/2017 is cancelled  
Chevron Australia Pty Ltd

Cancel this notice on receipt.

**Chart formerly affected - Aus 64 - Aus 69 - Aus 743**

**884(T)/2017 INDIAN OCEAN - Mid-Indian Ocean Basin - Light buoy off station**  
*Former Notice* - 1038(T)/2014 is cancelled  
Australian Bureau of Meteorology

Cancel this notice on receipt.

**Chart formerly affected - Aus 4708 (INT 708) - Aus 4714 (INT 714) - Aus 4723 (INT 723) - AX 04708U - AX 04714U - AX 04723U**

**885(T)/2017 INDIAN OCEAN - Roo Rise - Light buoy off station**  
Australian Bureau of Meteorology

The light buoy, *Fl.2s* (13° 59'.1 S 110° 00'.5 E) is off station.

**Chart temporarily affected - Aus 4708 (INT 708) - Aus 4723 (INT 723)**

**886(T)/2017 AUSTRALIA - VICTORIA - Port Phillip - South Channel to Yarra River - Dredging operations**  
Port of Melbourne Corporation Notice 252(T)/2017

The dredge *Brisbane* and support vessels *QUA* and *John Norgate* are conducting dredging operations in the following locations:

South Channel (38° 18'.80 S 144° 47'.40 E)  
Spoil grounds (38° 00'.80 S 144° 52'.80 E) and (38° 14'.80 S 144° 57'.50 E)  
Station Pier Outer West berth (37° 50'.78 S 144° 55'.79 E)  
Yarra River in the vicinity of position 37° 50'.02 S 144° 53'.83 E.

Mariners are advised to navigate with caution in the area.

**Chart temporarily affected - Aus 144 - Aus 150 - Aus 154 - Aus 158**

**887(T)/2017 AUSTRALIA - VICTORIA - Port Phillip - Maribyrnong River - Drilling operations**

Victorian Ports Corporation (Melbourne) Notice 258(T)/2017

Drilling operations are in progress in the vicinity of position 37° 48'.46 S 144° 54'.41 E.

The barge *Sealift 10* and support vessel *Sea Punt SP01* are on site and will monitor VHF Ch12. and 16

Mariners are advised to navigate with caution in the area.

**Chart temporarily affected - Aus 154****888(T)/2017 AUSTRALIA - TASMANIA - D'Entrecasteaux Channel - Soldiers Point - Marine farm works**

Marine and Safety Tasmania Notice M127/2017

Works are in progress in an area bounded by the following positions:

43° 10'.60 S 147° 17'.01 E

43° 10'.92 S 147° 17'.50 E

43° 11'.11 S 147° 17'.26 E

43° 10'.79 S 147° 16'.77 E.

**Chart temporarily affected - Aus 173****889(T)/2017 AUSTRALIA - TASMANIA - Three Hummock Island - Wreck**

Marine and Safety Tasmania Notice 122/2017

A wreck exists in position 40° 27'.64' S 144° 50'.07 E.

Mariners are advised to navigate with caution in the area.

**Chart temporarily affected - Aus 790**

**890(T)/2017 AUSTRALIA - TEMPORARY AND PRELIMINARY NOTICES**

Former Notice - 588(T)/2017 is cancelled  
 Australian Hydrographic Service

<i>Notice</i>	<i>Charts affected</i>	<i>Locality and Subject</i>
		<b>BASS STRAIT</b>
		<i>King Island</i>
<b>1401/2015</b>	Aus487 789 AX00487S	Scientific instruments
		<i>Ninety Mile Beach</i>
<b>121/2017</b>	Aus357 487	Survey operations
<b>434/2014</b>	Aus357 4644	Light unlit
		<b>CORAL SEA</b>
		<i>Bampton Reef</i>
<b>639/2015</b>	Aus4604 AX04604U	Light buoy off station northwards
		<i>Diamond Islets</i>
<b>225/2017</b>	Aus614 4620 4621	Shoaling
		<i>Lihou Reef</i>
<b>530/2017</b>	Aus4604 4621	Light buoy off station northeastwards
		<b>NEW SOUTH WALES</b>
		<i>Batemans Bay</i>
<b>965/2016</b>	Aus191	Dredging operations
		<i>Cabbage Tree Bay</i>
<b>50/2016</b>	Aus197 200 201 AX00200T 00201T	Scientific instruments
		<i>Cape Baily to Ben Buckler</i>
<b>52/2016</b>	Aus197 200 808 809 AX00200T 00808S 00809S	Scientific instruments
		<i>Cape Byron</i>
<b>709/2016</b>	Aus813	Obstructions eastwards
		<i>Clarence River</i>
<b>43/2015</b>	Aus222	Obstructions
<b>823/2016</b>	Aus222	Shoaling
<b>213/2017</b>	Aus222 812 813	Harbour works
		<i>Crowdy Head</i>
<b>1073/2016</b>	Aus811	Light buoy off station
		<i>Green Cape</i>
<b>653/2016</b>	Aus806	Light buoy off station eastwards
		<i>Hawkesbury River</i>
<b>939/2015</b>	Aus204 217 AX00215T	Light buoy
		<i>Jervis Bay</i>
<b>515/2017</b>	Aus193	Light unlit
		<b>NEW ZEALAND - NOUVELLE CALEDONIE - Fiji Islands</b>
<b>831/2017</b>	Aus197 198 489 609 808 4060 4601 4602 4604 4643	Cable operations
		<i>Point Danger</i>
<b>824/2016</b>	Aus220	Scientific instrument

## 890(T)/2017 AUSTRALIA - TEMPORARY AND PRELIMINARY NOTICES

<i>Notice</i>	<i>Charts affected</i>	<i>Locality and Subject</i>
		<i>Port Jackson</i>
461/2016	Aus200 201	Light buoys withdrawn
710/2016	Aus200 201	Harbour works
65/2017	Aus200 202	Harbour works
175/2017	Aus200 201	Scientific instrument
287/2017	Aus200 202	Drilling operations
325/2017	Aus200 202	Harbour works
706/2017	Aus200 202	Scientific instruments
789/2017	Aus200 202	Harbour works
		<i>Port Kembla</i>
680/2015	Aus194 195	Dredging operations; light withdrawn
400/2016	Aus194	Exclusion zone
		<i>Tasman Sea</i>
742/2017	Aus191 193 194 195 196 197 198 200 201 202 203 204 207 208 209 215 216 217 219 220 221 222 489 806 807 808 809 810 811 812 813 4060 4601 4602 4643	Scientific Survey
		<i>Twofold Bay</i>
966/2016	Aus192	Berth damaged
1035/2016	Aus192	Scientific instruments
559/2017	Aus192	Scientific instruments
		<b>NORTHERN TERRITORY</b>
		<i>Darwin</i>
893/2015	Aus26 28 AX00026T	Scientific instruments
182/2017	Aus25	Light buoy unlit
		<i>East Arm</i>
894/2015	Aus28	Lights
		<i>East Vernon Island</i>
1193/2014	Aus20	Obstruction
		<i>Joseph Bonaparte Gulf</i>
842/2017	Aus316 725	Maintenance works; moorings
		<i>Medina Inlet</i>
773/2016	Aus23 722	Light buoy unlit
		<i>Muiron Islands</i>
619/2017	Aus328 744 4723 4725	Drill rig northwards
		<b>QUEENSLAND</b>
		<i>Abbot Point</i>
659/2016	Aus255 268 825 826	Scientific instruments
18/2017	Aus255	Mooring buoys
369/2017	Aus255 826	Light beacon destroyed
370/2017	Aus255 826	Nav aids off station; nav aids destroyed; depths unreliable; obstructions
		<i>Airlie Beach</i>
215/2017	Aus252 253	Wreck
745/2017	Aus269	Wreck
		<i>Bowen</i>
269/2014	Aus268	Wreck
884/2016	Aus268	Light beacon destroyed
968/2016	Aus268	Harbour works
326/2017	Aus268	Light buoy off station
461/2017	Aus268	Obstruction

## 890(T)/2017 AUSTRALIA - TEMPORARY AND PRELIMINARY NOTICES

<i>Notice</i>	<i>Charts affected</i>	<i>Locality and Subject</i>
<b>1005/2015</b>	Aus301	<i>Boyd Point</i> Scientific instruments
<b>462/2017</b>	Aus301	Exclusion zone
<b>746/2017</b>	Aus301	Mooring buoys
<b>747/2017</b>	Aus237 238	<i>Brisbane</i> Harbour works
<b>1181/2016</b>	Aus238	<i>Brisbane River</i> Harbour works; light beacon withdrawn
<b>1205/2016</b>	Aus237	Harbour works
<b>66/2017</b>	Aus238	Light unlit
<b>176/2017</b>	Aus238	Scientific instrument
<b>519/2017</b>	Aus237	Virtual AIS
<b>561/2017</b>	Aus238	Light buoys
<b>611/2017</b>	Aus238	Harbour works
<b>748/2017</b>	Aus237	Scientific instruments
<b>605/2016</b>	Aus242	<i>Bundaberg</i> Shoaling
<b>252/2017</b>	Aus242	Nav aids off station
<b>520/2017</b>	Aus242	Harbour works
<b>707/2017</b>	Aus242	Anchoring prohibited
<b>792/2017</b>	Aus242	Exclusion zone
<b>793/2017</b>	Aus242	Dredging operations
<b>606/2016</b>	Aus490 818 819	<i>Bunker Group</i> Foul ground westwards
<b>253/2017</b>	Aus262 263	<i>Cairns</i> Shoaling
<b>464/2017</b>	Aus262 263 830	Dredging operations
<b>665/2017</b>	Aus263 264	Dredging operations
<b>1214/2013</b>	Aus826 827	<i>Cape Bowling Green</i> Scientific instrument
<b>912/2014</b>	Aus826 827	Light buoy off station eastwards
<b>708/2017</b>	Aus270	<i>Cape Flattery</i> Shoaling
<b>926/2016</b>	Aus270	<i>Cooktown</i> Obstruction
<b>418/2017</b>	Aus252 253	<i>Daydream Island</i> Lights unlit; light buoys established
<b>834/2017</b>	Aus293 299	<i>Ellis Channel</i> Light buoy off station
<b>211/2013</b>	Aus819	<i>Fitzroy River</i> Wreck
<b>661/2016</b>	Aus819	Scientific instrument
<b>750/2017</b>	Aus826	<i>Flagstaff Bay</i> Light unlit
<b>666/2017</b>	Aus235 236	<i>Flinders Reef</i> Light buoy off station
<b>1182/2016</b>	Aus816	<i>Gardner Bank</i> Wreck

## 890(T)/2017 AUSTRALIA - TEMPORARY AND PRELIMINARY NOTICES

<i>Notice</i>	<i>Charts affected</i>	<i>Locality and Subject</i>
<b>579/2014</b>	Aus245 246 819	<i>Gladstone</i> Scientific instruments
<b>568/2016</b>	Aus245 271	Harbour works
<b>68/2017</b>	Aus244 245 271	Harbour works
<b>291/2017</b>	Aus245	Shoaling
<b>521/2017</b>	Aus258	<i>Gladys Inlet</i> Light buoy off station
<b>564/2017</b>	Aus268 825	<i>Gloucester Passage</i> Light buoys off station
<b>871/2017</b>	Aus230	<i>Gold Coast</i> Shoaling
<b>523/2017</b>	Aus821 824 825	<i>Great Barrier Reef</i> Shoaling
<b>664/2016</b>	Aus241	<i>Great Sandy Strait</i> Scientific instrument
<b>971/2016</b>	Aus241 817	Shoaling
<b>1183/2016</b>	Aus241 817	Wreck
<b>372/2017</b>	Aus241 817	Light buoys
<b>566/2017</b>	Aus254	<i>Hamilton Island</i> Harbour works
<b>401/2016</b>	Aus250	<i>Hay Point</i> Scientific instrument
<b>665/2016</b>	Aus249 250 823	Light unlit
<b>20/2017</b>	Aus250	Obstructions
<b>110/2017</b>	Aus249 823	Obstruction
<b>292/2017</b>	Aus249 823	Obstruction
<b>567/2017</b>	Aus249 250 823 4060 4602 4620 4621 4635	Light unlit
<b>602/2013</b>	Aus259 828	<i>Hinchinbrook Channel</i> Wreck
<b>293/2017</b>	Aus259 267	Light buoy unlit; light beacon unlit
<b>1369/2015</b>	Aus828	<i>Hinchinbrook Island</i> Light buoy withdrawn
<b>419/2017</b>	Aus252	<i>Hook Island</i> Light beacon destroyed; light buoy established
<b>67/2016</b>	Aus6	<i>Karumba</i> Shoaling
<b>872/2017</b>	Aus270 280 281 833 834	<i>LADS Passage</i> Shoaling
<b>757/2011</b>	Aus252	<i>Laguna Quays</i> Lights unlit; light beacons damaged
<b>758/2011</b>	Aus252	Shoaling
<b>743/2015</b>	Aus259 267	<i>Lucinda</i> Light buoy off station; light buoy unlit
<b>375/2017</b>	Aus259 267	Shoaling
<b>69/2017</b>	Aus249 250	<i>Mackay</i> Scientific instruments
<b>327/2017</b>	Aus249	Light beacon destroyed
<b>376/2017</b>	Aus249 250 823 824	Light buoy off station
<b>377/2017</b>	Aus250	Traffic signal station unlit

## 890(T)/2017 AUSTRALIA - TEMPORARY AND PRELIMINARY NOTICES

<i>Notice</i>	<i>Charts affected</i>	<i>Locality and Subject</i>
<b>751/2017</b>	Aus250	<i>Mackay Harbour</i> Traffic signal station unlit
<b>752/2017</b>	Aus250	Harbour works
<b>379/2014</b>	Aus256	<i>Magnetic Island</i> Scientific instrument
<b>1072/2014</b>	Aus256	Scientific instrument
<b>294/2017</b>	Aus256	Diving operations
<b>873/2017</b>	Aus235	<i>Mooloolaba</i> Shoaling
<b>740/2014</b>	Aus236	<i>Moreton Bay</i> Wreck
<b>666/2016</b>	Aus236	Shoaling
<b>1122/2016</b>	Aus235 236	Light buoy
<b>1207/2016</b>	Aus236	Scientific instrument
<b>111/2017</b>	Aus236	Beacon destroyed
<b>112/2017</b>	Aus236	Wreck
<b>255/2017</b>	Aus235 236	Shoaling
<b>328/2017</b>	Aus236	Light beacon destroyed
<b>421/2017</b>	Aus236	Light beacon destroyed
<b>422/2017</b>	Aus236	Light unlit
<b>423/2017</b>	Aus236	Ship to ship transfer
<b>468/2017</b>	Aus236	Cable laying operations
<b>526/2017</b>	Aus236	Light beacon damaged
<b>569/2017</b>	Aus236	Dredging operations
<b>754/2017</b>	Aus236	Dredging operations
<b>467/2016</b>	Aus816	<i>North Gardner Bank</i> Wreck
<b>470/2017</b>	Aus816	Foul ground
<b>874/2017</b>	Aus819	<i>One Tree Island</i> Scientific instrument
<b>471/2017</b>	Aus230 814	<i>Palm Beach to Gold Coast</i> Dredging operations
<b>667/2017</b>	Aus367 490 820	<i>Peaked Island</i> Search and rescue exercise northeastwards
<b>528/2017</b>	Aus815	<i>Point Cartwright</i> Obstruction northeastwards
<b>614/2017</b>	Aus269	<i>Port of Airlie</i> Harbour works
<b>379/2017</b>	Aus252 824	<i>Proserpine River</i> Light beacon unlit
<b>714/2016</b>	Aus235 236	<i>Pumicestone Channel</i> Scientific instruments
<b>376/2015</b>	Aus294	<i>Red Island Point</i> Light buoys unlit
<b>615/2017</b>	Aus829 830	<i>Russell Heads</i> Light withdrawn
<b>801/2017</b>	Aus248 367 820 822	<i>Shoalwater Bay</i> Live firing
<b>837/2017</b>	Aus260 261 367 822	Live firing

## 890(T)/2017 AUSTRALIA - TEMPORARY AND PRELIMINARY NOTICES

<i>Notice</i>	<i>Charts affected</i>	<i>Locality and Subject</i>
		<i>Shute Harbour</i>
426/2017	Aus269	Light beacons destroyed
570/2017	Aus252 253 269	Lights; harbour works completed
670/2017	Aus269	Obstructions
875/2017	Aus253 269	Light buoys
		<i>Thursday Island</i>
833/2016	Aus293 299	Dolphin damaged
617/2017	Aus293 299	Light beacon destroyed
		<i>Townsville</i>
190/2015	Aus257	Light buoy withdrawn
469/2016	Aus257	Harbour works
513/2016	Aus257	Harbour works
571/2016	Aus257	Depths; nav aids
672/2016	Aus257	Light buoys withdrawn
222/2017	Aus257	Scientific instrument
380/2017	Aus256 827	Scientific instruments
427/2017	Aus256	Light beacon destroyed
572/2017	Aus257	Dredging operations
756/2017	Aus256	Diving operations
838/2017	Aus257	Harbour works
		<i>Two Islands</i>
1274/2013	Aus831 832	Wreck
		<i>Weipa</i>
1257/2016	Aus4	Harbour works
179/2017	Aus4	Light buoy off station
839/2017	Aus4	Light beacon destroyed
840/2017	Aus4	Exclusion zone
		<i>Whitsunday Island</i>
301/2016	Aus252 253 824	Wreck
		<i>Wide Bay</i>
473/2017	Aus240 815 817	Shoaling; navline
		<b>SOUTH AUSTRALIA</b>
		<i>Fleurieu Peninsula</i>
436/2017	Aus485 780	Hulk; prohibited area
		<i>Gleneig</i>
1000/2016	Aus125	Shoaling; dredging operations
		<i>Gulf St Vincent</i>
437/2017	Aus139 781	Artificial reef
		<i>Port Adelaide</i>
720/2008	Aus137	Shoaling
853/2015	Aus130 138	Light beacon damaged; light buoy established
1048/2016	Aus130 485 781	Obstruction westwards
1221/2016	Aus130 138	Light beacon destroyed
		<i>Port Pirie</i>
620/2016	Aus136	Harbour works
		<i>Snapper Point to Douglas Bank</i>
438/2017	Aus132 778	Shoaling
		<i>Thevenard</i>
322/2016	Aus122	Light beacon destroyed
		<i>Western Port</i>
585/2017	Aus150 151	Beacon removed; buoy established

## 890(T)/2017 AUSTRALIA - TEMPORARY AND PRELIMINARY NOTICES

<i>Notice</i>	<i>Charts affected</i>	<i>Locality and Subject</i>
485/2017	Aus135	<i>Whyalla</i> Light beacons destroyed
		<b>TASMANIA</b>
1009/2016	Aus173 795 796	<i>Bruny Island</i> Scientific instruments southeastwards
166/2016	Aus487 798 800	<i>Cape Barren Island</i> Scientific instruments
848/2017	Aus173	<i>D'Entrecasteaux Channel</i> Marine farm
888/2017	Aus173	Marine farm works
855/2016	Aus164	<i>Devonport</i> Obstruction
944/2016	Aus164	Light beacon destroyed
1010/2016	Aus767 798	<i>Eddystone Point</i> Scientific instruments southeastwards
1011/2016	Aus793	<i>Flying Cloud Point</i> Scientific instruments westwards
576/2012	Aus171 796	<i>Frederick Henry Bay</i> Scientific instruments
587/2016	Aus172	<i>Hobart</i> Light
945/2016	Aus172	Harbour works
36/2017	Aus174	<i>Huon River</i> Wreck
169/2016	Aus177	<i>Macquarie Harbour</i> Scientific instruments
1194/2016	Aus177	Harbour works
440/2017	Aus177 792	Scientific instruments
587/2017	Aus177 792	Scientific instruments
170/2016	Aus170 766 797	<i>Maria Island</i> Scientific instruments
1103/2014	Aus170 766 797	<i>Mercury Passage</i> Obstructions
372/2016	Aus171 174	<i>North West Bay</i> Mooring area
676/2017	Aus170 766 797	<i>Okehampton Bay</i> Marine farm
627/2016	Aus171 796	<i>Pipe Clay Head to Pitt Water</i> Scientific instruments
1055/2016	Aus173 174 794 795	<i>Recherche Bay</i> Scientific instrument
1056/2016	Aus171 172	<i>River Derwent</i> Works
1225/2016	Aus168	<i>River Tamar</i> Scientific instruments
		<i>Storm Bay</i>

**890(T)/2017 AUSTRALIA - TEMPORARY AND PRELIMINARY NOTICES**  
**539/2017** Aus171 795 796 Scientific instrument

<i>Notice</i>	<i>Charts affected</i>	<i>Locality and Subject</i>
<b>889/2017</b>	Aus790	<i>Three Hummock Island</i> Wreck
<b>620/2017</b>	Aus24 25 26 27 28 29 309 311 312 315 316 722 4721	<b>TIMOR SEA</b> <i>NORTHERN TERRITORY</i> Pipeline operations
<b>223/2009</b>	Aus312 4721 AX0312F 4721F	<i>Sahul Banks</i> Navaid; racon non operational
<b>758/2017</b>	Aus314 319	<i>Vulcan Shoal</i> Drill rig northeastwards
<b>358/2016</b>	Aus377 840	<b>TORRES STRAIT</b> <i>Darnley Island</i> Wreck
<b>878/2017</b>	Aus299	<i>Hammond Island</i> Harbour works; dredging
<b>84/2016</b>	Aus839	<i>Kai-Maituine Reef</i> Wreck
<b>410/2016</b>	Aus841 842	<i>Talbot Islands to Deliverance Island</i> Obstructions
<b>586/2017</b>	Aus143	<b>VICTORIA</b> <i>Barwon Heads</i> Light buoy off station
<b>1271/2015</b>	Aus349 AX00349S	<i>Cape Reamur</i> Exclusion zone; light buoy
<b>1222/2016</b> <b>634/2017</b>	Aus182 Aus182	<i>Lakes Entrance</i> Light beacon destroyed Dredging operations
<b>119/2017</b>	Aus349 787	<i>Port Campbell</i> Survey operations southwestwards
<b>396/2017</b>	Aus141	<i>Port Fairy</i> Light unlit
<b>812/2015</b> <b>223/2016</b> <b>905/2016</b> <b>908/2016</b> <b>1002/2016</b> <b>1003/2016</b> <b>1004/2016</b> <b>1165/2016</b> <b>1192/2016</b> <b>120/2017</b> <b>152/2017</b> <b>238/2017</b> <b>274/2017</b> <b>439/2017</b> <b>488/2017</b> <b>538/2017</b> <b>845/2017</b> <b>846/2017</b> <b>886/2017</b>	Aus157 Aus143 Aus143 158 Aus157 Aus144 158 Aus154 Aus157 Aus158 Aus153 Aus154 Aus154 Aus153 157 Aus154 Aus154 Aus157 Aus158 Aus155 Aus143 157 Aus144 150 154 158	<i>Port Phillip</i> Shoaling Light unlit Light buoy off station Light beacon unlit Light beacon unlit Light beacon altered Light beacon unlit Buoy off station Harbour works Light beacon destroyed Harbour works Light buoy off station; light buoy unlit Harbour works Harbour works Light buoy off station Beacon destroyed Obstructions Harbour works Dredging operations

**890(T)/2017 AUSTRALIA - TEMPORARY AND PRELIMINARY NOTICES**  
**887/2017** Aus154 Drilling operations

<i>Notice</i>	<i>Charts affected</i>	<i>Locality and Subject</i>
<b>563/2015</b>	Aus182	<i>Port Welshpool</i> Shoaling
<b>1053/2016</b>	Aus150	<i>The Narrows</i> Shoaling
<b>764/2017</b>	Aus150 151 152	<i>Western Port</i> Light beacons unlit
<b>WESTERN AUSTRALIA</b>		
<b>88/2016</b>	Aus64 69 743	<i>Ashburton Road</i> Mooring buoys
<b>671/2017</b>	Aus328	<i>Barrow Island</i> Subsea operations eastwards
<b>881/2017</b>	Aus325 326 739	<i>Bedout Island</i> Scientific instruments northwestwards
<b>214/2016</b>	Aus332	<i>Bluff Point</i> Fish aggregating devices
<b>386/2017</b>	Aus319 320 322 4721 4722	<i>Browse Island</i> Subsea operations northwestwards
<b>576/2017</b>	Aus319 320	Prelude FLNG commissioning
<b>623/2017</b>	Aus319 320 4721 4722	Drill rig northwestwards
<b>624/2017</b>	Aus319 320	Subsea operations northwestwards
<b>577/2017</b>	Aus115	<i>Bunbury</i> Shoaling
<b>1214/2016</b>	Aus116	<i>Busseilton</i> Seagrass wrack; dredging operations
<b>988/2016</b>	Aus73	<i>Carnarvon</i> Obstruction
<b>578/2017</b>	Aus73	Shoaling
<b>271/2013</b>	Aus57 741 742	<i>Dampier</i> Obstruction
<b>216/2016</b>	Aus58 59 60	Scientific instruments
<b>777/2016</b>	Aus57 58 60 741 742	Shoaling
<b>305/2017</b>	Aus59	Harbour works
<b>851/2015</b>	Aus57 327 741 742	<i>Dampier Archipelago</i> Obstruction eastwards
<b>882/2017</b>	Aus111 112 117 754	<i>Direction Bank to Garden Island</i> Military exercise
<b>1078/2015</b>	Aus318 319 727 728 AX00318S 00319S 00319U	<i>East Holothuria Reef</i> Shoaling
<b>761/2017</b>	Aus110	<i>Emu Point</i> Scientific instrument
<b>939/2016</b>	Aus52 53 54 739 740	<i>Finucane Island to Weerde Island</i> Scientific instruments northwards
<b>940/2016</b>	Aus754 755	<i>Five Fathom Bank</i> Scientific instrument
<b>476/2016</b>	Aus116 335 336 756 757	<i>Flinders Bay</i> Shoaling

## 890(T)/2017 AUSTRALIA - TEMPORARY AND PRELIMINARY NOTICES

<i>Notice</i>	<i>Charts affected</i>	<i>Locality and Subject</i>
339/2017	Aus326 740	<i>Forestier Islands</i> Scientific instrument northwestwards
536/2017	Aus81	<i>Geraldton</i> Marine farm
1043/2016	Aus320 323 730 732	<i>Hall Point to Raft Point</i> Shoaling
341/2017	Aus754	<i>Ledge Point</i> Scientific instrument
843/2016	Aus116	<i>Mandurah</i> Harbour works
151/2017	Aus754	<i>Marmion Reef</i> Light buoy
522/2016	Aus328	<i>Montebello Islands</i> Light buoy northwestwards
268/2017	Aus328	Subsea operations northwestwards
478/2016	Aus754	<i>Perth</i> Scientific instruments westwards
1123/2015	Aus54	<i>Port Hedland</i> Light beacons; tug mooring
1393/2015	Aus53 739 740	Scientific instrument
713/2017	Aus52 53 739 740	Dredging
844/2017	Aus52 53	Scientific instruments
1092/2016	Aus55 326 740	<i>Port Walcott</i> Tide gauge
480/2016	Aus327	<i>Rankin Bank</i> Scientific instrument
731/2016	Aus327 328	Scientific instruments southwestwards
77/2017	Aus327	Subsea operations northeastwards
630/2017	Aus327	Subsea operations
762/2017	Aus327 4723	Drill rig
631/2017	Aus754	<i>Rottneest Island</i> Scientific instrument
763/2017	Aus324 325 4722	<i>Rowley Shoals</i> Scientific instruments
483/2017	Aus328 744 4723 4725	<i>Thevenard Island</i> Gas field to be decommissioned
673/2017	Aus40 41	<i>Yampi Sound</i> Ship to ship transfer
885/2017	Aus4708 4723	<b>INDIAN OCEAN</b> <i>Roo Rise</i> Light buoy off station
454/2015	Aus4070 4071	<i>Sumatera</i> Scientific instruments westwards
424/2015	Aus4604 4622 AX04604U	<b>PACIFIC OCEAN</b> Scientific instruments
664/2017	Aus4623	Scientific instruments

## 890(T)/2017 AUSTRALIA - TEMPORARY AND PRELIMINARY NOTICES

<i>Notice</i>	<i>Charts affected</i>	<i>Locality and Subject</i>
		<b>PAPUA NEW GUINEA</b>
78/2016	Aus399 683 4622	<i>Bougainville Island</i> Lights unlit
979/2016 298/2017	Aus523 642 643 Aus643	<i>Huon Gulf</i> Survey operations Light buoy off station
877/2017	Aus674 677	<i>Kimbe</i> Light beacon unlit
531/2017	Aus642 643	<i>Lae</i> Infrastructure; coastline
299/2017	Aus397 399 684 4060 4604 4622	<i>Madehas Island</i> Light unlit
164/2013	Aus628	<i>Nuakata Passage</i> Light beacon destroyed
226/2017	Aus505 621	<i>Padana Nahua Passage to Bootless Inlet</i> Shoaling
143/2016 144/2016	Aus621 622 Aus622	<i>Port Moresby</i> Wrecks Harbour works; horizontal datum error
264/2017	Aus379 505 621	<i>Vabukori</i> Light unlit
		<b>SOLOMON ISLANDS</b>
677/2017	SLB101	<i>Honiara and Lungga Roads</i> Shoaling
678/2017	SLB101 201	<i>Lungga Point</i> Light beacon unlit
679/2017	Aus4604 4623 4634 SLB304 305	<i>Maana'oba Island to Mbita'ama Harbour</i> Lights unlit
680/2017	SLB101	<i>Marau Sound</i> Light beacons unlit
681/2017	Aus4623 SLB107	<i>Ndende Island</i> Light unlit
682/2017	SLB102 301 302	<i>Nega Point</i> Light beacons unlit
683/2017	Aus4623 4634 SLB305	<i>San Christobal Island</i> Light unlit
684/2017	Aus4604 4621 4622 4623 4634 SLB301 302	<i>Vaghoe Point</i> Light unlit

II

IV

**HYDROGRAPHIC REPORTS**

NIL

### III

#### **NAVIGATION WARNINGS**

The Australian Hydrographic Service will no longer compile Section III of the Australian Notices to Mariners. For the most up to date navigation warnings please refer to:

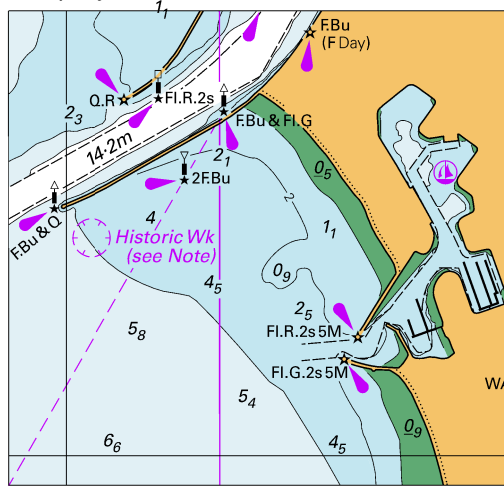
AMSA Navigation Warnings

<http://amsa.gov.au/search-and-rescue/distress-and-safety-comms/msi/msi-email/index.asp>

New Zealand Notices to Mariners (Navarea XIV warnings)

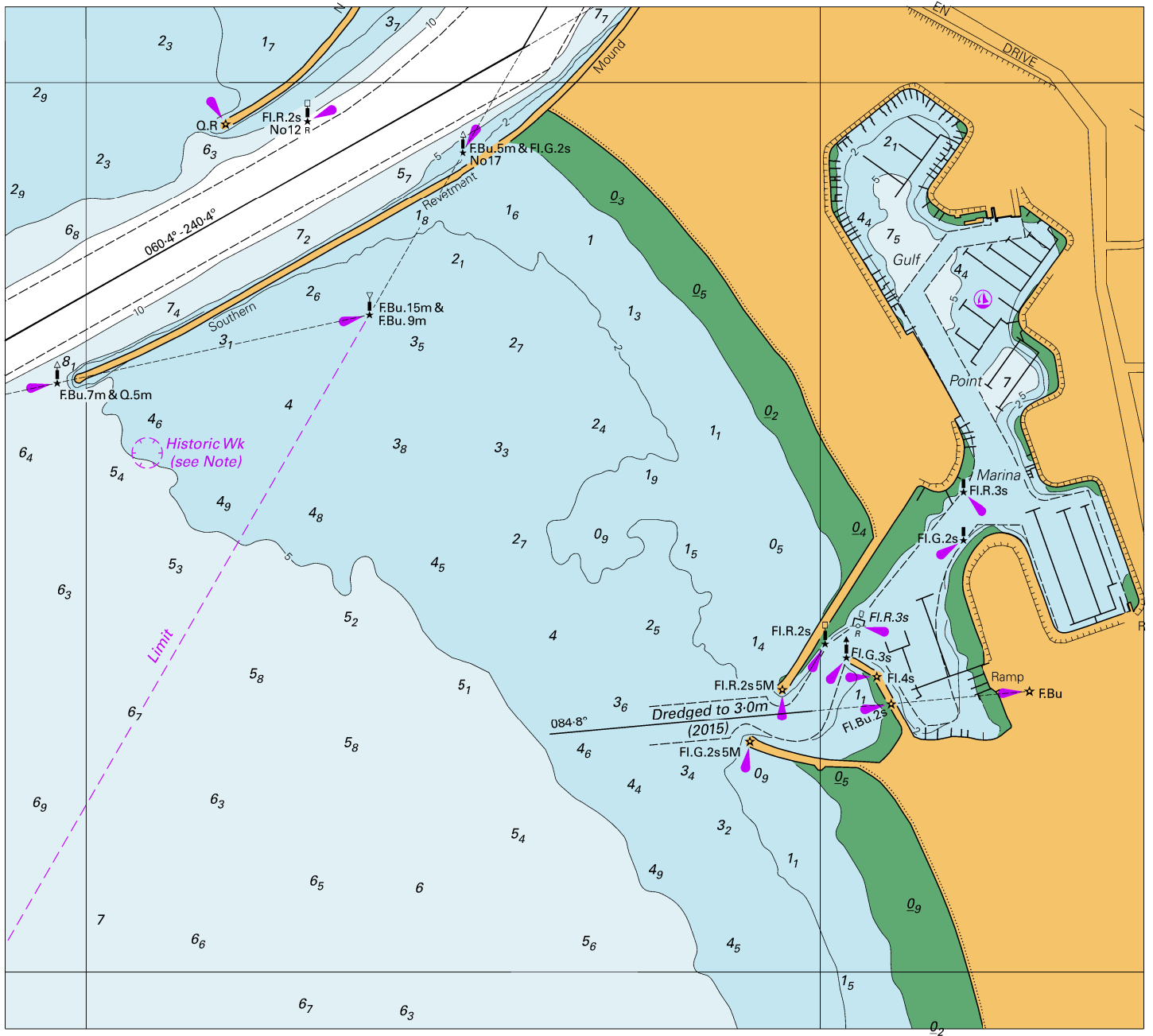
<http://www.linz.govt.nz/sea/maritime-safety/notices-mariners>

To accompany Australian Notice to Mariners 864/2017



© Commonwealth of Australia 2017  
Block for Chart Aus 130 (66.1 x 62.6mm)

To accompany Australian Notice to Mariners 864/2017



Block for Chart Aus 137

© Commonwealth of Australia 2017

(189.4 x 170.0mm)