



6 October 2017

Edition 20

# AUSTRALIAN NOTICES TO MARINERS

## Notices 813 - 848

Published fortnightly by the Australian Hydrographic Service



Australian Notices to Mariners are the authority for correcting charts and publications published by the Australian Hydrographic Service covering Australia, Papua New Guinea, Solomon Islands, Australian Antarctic Territory and Timor-Leste.

Commodore B.K. BRACE RAN  
*Hydrographer of Australia*

---

### SECTIONS.

- I. **Australian Notices to Mariners, including blocks and notes.**
- II. **Hydrographic Reports.**
- III. **Navigational Warnings.**

### SUPPLEMENTS.

- I. **Tracings**
- II. **Cumulative List of Australian Notices to Mariners.**
- III. **Cumulative List of Temporary and Preliminary Australian Notices to Mariners.**
- IV. **Temporary and Preliminary Notices in force.**
- V. **Amendments to Admiralty List of Lights and Fog Signals (Vol K), Radio Signals (NP 281(2), 282, 283(2), 285, 286(4)) and Sailing Directions (NP 9, 13, 14, 15, 33, 34, 35, 36, 39, 44, 51, 60, 61, 62, 100, 136).**

---

© Commonwealth of Australia 2017

This work is copyright. Apart from any use permitted under the Copyright Act 1968, no part may be reproduced by any process, adapted, communicated or commercially exploited without prior written permission from The Commonwealth represented by the Australian Hydrographic Service.

## IMPORTANT NOTICE

This edition of Notices to Mariners includes all significant information affecting AHS products which the AHS has become aware of since the last edition. All reasonable efforts have been made to ensure the accuracy and completeness of the information, including third party information, on which these updates are based. The AHS regards third parties from which it receives information as reliable, however the AHS cannot verify all such information and errors may therefore exist. The AHS does not accept liability for errors in third party information.

---

## GENERAL INSTRUCTIONS

The substance of these notices should be inserted on the charts affected.

Bearings are referred to the true compass and are reckoned clockwise from North; those relating to lights are given as seen by an observer from seaward.

Positions quoted in notices relate to WGS84 which is the horizontal datum for all charts produced by the Australian Hydrographic Service.

The range quoted for a light is its nominal range.

Depths are with reference to the chart datum of each chart. Heights are above mean high water springs or mean higher high water, as appropriate.

The capital letter (P) or (T) after the number of any notice denotes a preliminary or temporary notice respectively, which are contained separately at the end of the permanent notices.

---

## REPORTING OF DANGERS

Mariners are particularly requested to notify the AUSTRALIAN HYDROGRAPHIC SERVICE, Locked Bag 8801 Wollongong, NSW 2500 (Fax 02-4223 6599, e-mail [datacentre@hydro.gov.au](mailto:datacentre@hydro.gov.au) or, alternatively by filling in and submitting the [Hydrographic Notes](#) forms located on the web site – [www.hydro.gov.au](http://www.hydro.gov.au)), immediately on the discovery of new dangers or suspected dangers to navigation. For changes or defects in aids to navigation notify AusSAR (Fax 02-6230 6868 or email [rccaus@amsa.gov.au](mailto:rccaus@amsa.gov.au)).

---

## AUTHORISED USE

Copies of Australian notices are available free of charge from the Australian Hydrographic Service (AHS) website ([www.hydro.gov.au](http://www.hydro.gov.au)) and through the eNotices (email) service ([www.hydro.gov.au/enotices/enotices.htm](http://www.hydro.gov.au/enotices/enotices.htm)).

Individual Notices may be copied for the purpose of inserting Notice substance on official charts and publications. Paper copies may be printed by chart agents and distributed to customers on a cost recovery basis. Participating chart agents are listed on the AHS website as providing a 'Paper Notices to Mariners' service ([www.hydro.gov.au/webapps/jsp/agents/agents-list.jsp](http://www.hydro.gov.au/webapps/jsp/agents/agents-list.jsp)). Copies of the notices may not be sold for profit without prior written agreement.

## NUMERICAL INDEX OF NOTICES TO MARINERS

### Edition No 20

| Notices | Aus Chart, INT Chart, ENC Cell, AHP, BA Pubs  |
|---------|---|
| 813     | Aus 203   |
| 814     | Aus 263   |
| 815     | Aus 245, 272  |
| 816     | Aus 230   |
| 817     | Aus 249, 250  |
| 818     | Aus 247   |
| 819     | Aus 830   |
| 820     | Aus 826, 827  |
| 821     | Aus 4602, 4603, 4604, 4620, INT 602, 603, 604, 620                                    |
| 822     | Aus 653   |
| 823     | Aus 293, 299, 839, 840, 841   |
| 824     | Aus 129   |
| 825     | Aus 776   |
| 826     | Aus 787   |
| 827     | Aus 143, 157  |
| 828     | Aus 179   |
| 829     | Aus 174   |
| 830(T)  | Aus 807   |
| 831(T)  | Aus 197, 198, 489, 609, 808, 4060, 4601, 4602, 4604, 4643, INT 60, 601, 602, 604, 643 |
| 832(T)  | Aus 4601, 4602, 4635, INT 601, 602, 635   |
| 833(T)  | Aus 252, 254, 825   |
| 834(T)  | Aus 293, 299  |
| 835(T)  | Aus 256, 827  |
| 836(T)  | Aus 248, 367, 820, 822  |
| 837(T)  | Aus 260, 261, 367, 822  |
| 838(T)  | Aus 257   |
| 839(T)  | Aus 4   |
| 840(T)  | Aus 4   |
| 841(T)  | Aus 621, 622  |
| 842(T)  | Aus 316, 725  |
| 843(T)  | Aus 65, 66  |
| 844(T)  | Aus 52, 53  |
| 845(T)  | Aus 155   |
| 846(T)  | Aus 143, 157  |
| 847(T)  | Aus 357   |
| 848(T)  | Aus 173   |

## NUMERICAL INDEX OF CHARTS AFFECTED

### Edition No 20

| Aus Chart | Notices        |
|-----------|----------------|
| Aus 4     | 839(T), 840(T) |
| Aus 52    | 844(T)         |
| Aus 53    | 844(T)         |
| Aus 65    | 843(T)         |
| Aus 66    | 843(T)         |
| Aus 129   | 824            |
| Aus 143   | 827, 846(T)    |
| Aus 155   | 845(T)         |
| Aus 157   | 827, 846(T)    |
| Aus 173   | 848(T)         |
| Aus 174   | 829            |
| Aus 179   | 828            |
| Aus 197   | 831(T)         |
| Aus 198   | 831(T)         |
| Aus 203   | 813            |
| Aus 230   | 816            |
| Aus 245   | 815            |
| Aus 247   | 818            |
| Aus 248   | 836(T)         |
| Aus 249   | 817            |
| Aus 250   | 817            |
| Aus 252   | 833(T)         |
| Aus 254   | 833(T)         |
| Aus 256   | 835(T)         |
| Aus 257   | 838(T)         |
| Aus 260   | 837(T)         |
| Aus 261   | 837(T)         |
| Aus 263   | 814            |
| Aus 272   | 815            |
| Aus 293   | 823, 834(T)    |
| Aus 299   | 823, 834(T)    |
| Aus 316   | 842(T)         |
| Aus 357   | 847(T)         |
| Aus 367   | 836(T), 837(T) |
| Aus 489   | 831(T)         |
| Aus 609   | 831(T)         |
| Aus 621   | 841(T)         |
| Aus 622   | 841(T)         |
| Aus 653   | 822            |
| Aus 725   | 842(T)         |
| Aus 776   | 825            |
| Aus 787   | 826            |
| Aus 807   | 830(T)         |
| Aus 808   | 831(T)         |
| Aus 820   | 836(T)         |
| Aus 822   | 836(T), 837(T) |
| Aus 825   | 833(T)         |
| Aus 826   | 820            |
| Aus 827   | 820, 835(T)    |
| Aus 830   | 819            |
| Aus 839   | 823            |
| Aus 840   | 823            |
| Aus 841   | 823            |
| Aus 4060  | 831(T)         |

| Aus Chart | Notices             |
|-----------|---------------------|
| Aus 4601  | 831(T), 832(T)      |
| Aus 4602  | 821, 831(T), 832(T) |
| Aus 4603  | 821                 |
| Aus 4604  | 821, 831(T)         |
| Aus 4620  | 821                 |
| Aus 4635  | 832(T)              |
| Aus 4643  | 831(T)              |

| INT Chart | Notices             |
|-----------|---------------------|
| INT 60    | 831(T)              |
| INT 601   | 831(T), 832(T)      |
| INT 602   | 821, 831(T), 832(T) |
| INT 603   | 821                 |
| INT 604   | 821, 831(T)         |
| INT 620   | 821                 |
| INT 635   | 832(T)              |
| INT 643   | 831(T)              |

**813 AUSTRALIA - NEW SOUTH WALES - Port Jackson - Lane Cove River - Topmark**

Australian Hydrographic Service

**Aus 203 [357/2017]**

|        |                      |               |                |
|--------|----------------------|---------------|----------------|
| Insert | port lateral topmark | 33° 48'.965 S | 151° 08'.643 E |
|--------|----------------------|---------------|----------------|

**814 AUSTRALIA - QUEENSLAND - Cairns - Trinity Inlet - Maintained depths**

Maritime Safety Queensland

**Aus 263 [688/2017]**

|       |                          |              |               |
|-------|--------------------------|--------------|---------------|
| Amend | maintained depth to 7.3m | 16° 55'.62 S | 145° 47'.02 E |
|-------|--------------------------|--------------|---------------|

|        |                      |              |               |
|--------|----------------------|--------------|---------------|
| Delete | dashed line, between | 16° 55'.47 S | 145° 47'.00 E |
|        |                      | 16° 55'.65 S | 145° 46'.95 E |
|        | legend, 7.0m         | 16° 55'.56 S | 145° 47'.00 E |

**815 AUSTRALIA - QUEENSLAND - Gladstone - North Passage Island - Nav aids; depths**

Maritime Safety Queensland

**Aus 245 [775/2017]**

|        |                    |             |              |
|--------|--------------------|-------------|--------------|
| Insert | accompanying block | 23° 45'.6 S | 151° 10'.2 E |
|--------|--------------------|-------------|--------------|

**Aus 272 [201/2017]**

|        |                    |             |              |
|--------|--------------------|-------------|--------------|
| Insert | accompanying block | 23° 45'.3 S | 151° 10'.2 E |
|--------|--------------------|-------------|--------------|

**816 AUSTRALIA - QUEENSLAND - Gold Coast - Light buoy**

Australian Hydrographic Service

**Aus 230 [776/2017]**

|         |   |              |               |
|---------|---|--------------|---------------|
| Replace | beacon with, special cylindrical light buoy, Fl. Y.3s, with topmark | 27° 54'.84 S | 153° 24'.62 E |
|---------|---|--------------|---------------|

**817 AUSTRALIA - QUEENSLAND - Hay Point - Light**

Maritime Safety Queensland Notice 379/2017

**Aus 249 [444/2017]**

|        |                    |             |              |
|--------|--------------------|-------------|--------------|
| Insert | accompanying block | 21° 16'.0 S | 149° 19'.5 E |
|--------|--------------------|-------------|--------------|

**Aus 250 (plan, Hay Point) [47/2017]**

|        |                    |             |              |
|--------|--------------------|-------------|--------------|
| Insert | accompanying block | 21° 17'.0 S | 149° 18'.8 E |
|--------|--------------------|-------------|--------------|

**818 AUSTRALIA - QUEENSLAND - Middle Island - Light withdrawn**

Maritime Safety Queensland

**Aus 247 [694/2017]**

|        |             |             |              |
|--------|-------------|-------------|--------------|
| Delete | light flare | 23° 10'.3 S | 150° 55'.3 E |
|--------|-------------|-------------|--------------|

**819 AUSTRALIA - QUEENSLAND - Port Douglas - Port limit**

Maritime Safety Queensland

**Aus 830 [502/2017]**

|        |                    |             |              |
|--------|--------------------|-------------|--------------|
| Insert | accompanying block | 16° 30'.0 S | 145° 30'.0 E |
|--------|--------------------|-------------|--------------|

**820 AUSTRALIA - QUEENSLAND - Spoon Reef - Depths**

LADS Flight

**Aus 826 [864/2016]**

|         |  |             |              |
|---------|--|-------------|--------------|
| Replace | depth, 11m, and enclosing contour, with rock which covers and uncovers and extend obstruction area SW to enclose | 18° 40'.3 S | 147° 33'.7 E |
|         | depth, 11m, with rock which covers and uncovers  | 18° 39'.3 S | 147° 34'.6 E |
|         | 15m contour with, danger line, between   | 18° 39'.7 S | 147° 34'.3 E |
|         |  | 18° 39'.2 S | 147° 34'.6 E |
|         |  | 18° 39'.7 S | 147° 34'.6 E |

**Aus 827 [693/2017]**

|         |  |             |              |
|---------|--|-------------|--------------|
| Replace | depth, 11m, and enclosing contour, with rock which covers and uncovers and extend obstruction area SW to enclose | 18° 40'.3 S | 147° 33'.7 E |
|         | depth, 11m, with rock which covers and uncovers  | 18° 39'.3 S | 147° 34'.6 E |
|         | 15m contour with, danger line, between   | 18° 39'.7 S | 147° 34'.3 E |
|         |  | 18° 39'.2 S | 147° 34'.6 E |
|         |  | 18° 39'.7 S | 147° 34'.6 E |

**821 AUSTRALIA - CORAL SEA - Myrmidon Reef - Depths southeastwards**

LADS Flight

**Aus 4602 (INT 602) [595/2017]**

|        |   |             |              |
|--------|---|-------------|--------------|
| Insert | depth, 25 <sub>ø</sub> m, enclosed by contour | 18° 24'.4 S | 147° 40'.6 E |
|--------|---|-------------|--------------|

**Aus 4603 (INT 603) [731/2017]**

|        |   |             |              |
|--------|---|-------------|--------------|
| Insert | depth, 25 <sub>ø</sub> m, enclosed by contour | 18° 24'.4 S | 147° 40'.6 E |
|--------|---|-------------|--------------|

**Aus 4604 (INT 604) [643/2017]**

|        |   |             |              |
|--------|---|-------------|--------------|
| Insert | depth, 25 <sub>ø</sub> m, enclosed by contour | 18° 24'.4 S | 147° 40'.6 E |
|--------|---|-------------|--------------|

**Aus 4620 (INT 620) [598/2017]**

|        |   |             |              |
|--------|---|-------------|--------------|
| Insert | depth, 10 <sub>ø</sub> m, enclosed by contour | 18° 25'.6 S | 147° 35'.3 E |
|        | depth, 25 <sub>ø</sub> m, enclosed by contour | 18° 24'.4 S | 147° 40'.6 E |
| Delete | depth, 71m                                    | 18° 24'.1 S | 147° 41'.8 E |

**822 PAPUA NEW GUINEA - Finschhafen - Depth**

Fugro

**Aus 653 (plan, Langemak Bay and Finschhafen) [619/2014]**

|        |   |               |                |
|--------|---|---------------|----------------|
| Insert | depth, 14 <sub>ø</sub> m, enclosed by contour | 06° 32'.796 S | 147° 50'.753 E |
|--------|---|---------------|----------------|

**823 AUSTRALIA - TORRES STRAIT - Hammond Island to Boigu Island - Nav aids**

Maritime Safety Queensland

**Aus 293** [646/2017]

|         |   |              |               |
|---------|---|--------------|---------------|
| Replace | light beacon, with starboard lateral conical light buoy, <i>Fl.G.3s</i> , without topmark | 10° 33'.59 S | 142° 13'.28 E |
|---------|---|--------------|---------------|

**Aus 299** [646/2017]

|         |   |              |               |
|---------|---|--------------|---------------|
| Replace | light beacon, with starboard lateral conical light buoy, <i>Fl.G.3s</i> , without topmark | 10° 33'.59 S | 142° 13'.28 E |
|         | light beacon, with port lateral cylindrical light buoy, <i>Fl.R.3s</i> , without topmark  | 10° 33'.62 S | 142° 13'.26 E |

**Aus 839** [1063/2016]

|         |   |            |              |
|---------|---|------------|--------------|
| Replace | light beacon, with port lateral cylindrical buoy, without topmark | 9° 54'.0 S | 142° 45'.9 E |
|---------|---|------------|--------------|

**Aus 840** [957/2016]

|         |   |            |              |
|---------|---|------------|--------------|
| Replace | light beacon, with port lateral cylindrical buoy, without topmark | 9° 54'.0 S | 142° 45'.9 E |
|---------|---|------------|--------------|

**Aus 841** [599/2017]

|         |   |                           |                               |
|---------|---|---------------------------|-------------------------------|
| Replace | beacon, with starboard lateral conical buoy, without topmark      | 9° 22'.4 S                | 142° 36'.6 E                  |
|         | light beacon, with port lateral cylindrical buoy, without topmark | 9° 54'.0 S                | 142° 45'.9 E                  |
| Move    | beacon to   | 9° 13'.7 S<br>9° 13'.52 S | 142° 13'.2 E<br>142° 13'.27 E |

**824 AUSTRALIA - SOUTH AUSTRALIA - Kangaroo Island - Ballast Head Harbor - Depths; nav aids; ZOC diagram**

Australian Hydrographic Service

**Aus 129** [556/2017]

|        |                      |             |              |
|--------|----------------------|-------------|--------------|
| Insert | accompanying block A | 35° 46'.7 S | 137° 47'.0 E |
|        | accompanying block B | 35° 47'.0 S | 137° 55'.5 E |

**825 AUSTRALIA - SOUTH AUSTRALIA - Williams Island to Winceby Island - Chart note**

Australian Hydrographic Service

**Aus 776** [654/2017]

|        |                   |             |              |
|--------|-------------------|-------------|--------------|
| Insert | accompanying note | 35° 10'.3 S | 137° 00'.0 E |
|--------|-------------------|-------------|--------------|

**826 AUSTRALIA - VICTORIA - Port Campbell - Restricted area; wells southwards**

Origin Energy

**Aus 787** [740/2017]

|        |                    |             |              |
|--------|--------------------|-------------|--------------|
| Insert | accompanying block | 39° 10'.8 S | 142° 56'.5 E |
|--------|--------------------|-------------|--------------|

**827 AUSTRALIA - VICTORIA - Port Phillip - Indented Head - Infrastructure**

Parks Victoria

**Aus 143** [784/2017]

|        |                         |             |              |
|--------|-------------------------|-------------|--------------|
| Delete | continuous line between | 38° 08'.8 S | 144° 43'.2 E |
|        |                         | 38° 08'.7 S | 144° 43'.2 E |
|        |                         | 38° 08'.7 S | 144° 43'.3 E |

**Aus 157** [784/2017]

|        |                         |              |               |
|--------|-------------------------|--------------|---------------|
| Amend  | legend to <i>Ramp</i>   | 38° 08'.78 S | 144° 43'.06 E |
| Delete | continuous line between | 38° 08'.77 S | 144° 43'.16 E |
|        |                         | 38° 08'.72 S | 144° 43'.21 E |
|        |                         | 38° 08'.72 S | 144° 43'.27 E |

**828 AUSTRALIA - TASMANIA - Lady Barron Island - Store Point - Nav aids**

Tasports

**Aus 179 (plan, Approaches to Lady Barron) [705/2017]**

Insert accompanying block

40° 12'.86 S

148° 14'.74 E

**829 AUSTRALIA - TASMANIA - Port Arthur - Long Bay - Pipeline**

Maritime and Safety Tasmania

**Aus 174 (plan, Port Arthur) [416/2017]**Insert supply pipeline with legend *Water*, between

43° 07'.501 S

147° 51'.962 E

43° 07'.542 S

147° 51'.908 E

43° 07'.566 S

147° 51'.891 E

43° 07'.618 S

147° 51'.889 E

**830(T)/2017 AUSTRALIA - NEW SOUTH WALES - Brush Island - Light range restored**

*Former Notice* - 662(T)/2017 is cancelled  
NSW Roads and Maritime Services

Cancel this notice on receipt.

**Chart formerly affected - Aus 807****831(T)/2017 AUSTRALIA - NEW SOUTH WALES - NEW ZEALAND - NOUVELLE CALEDONIE - Fiji Islands - Cable operations**

TE SubCom

Vessel *CS Responder* is conducting submarine cable laying operations between the following positions:

33° 55'.59 S 151° 15'.54 E  
 33° 58'.62 S 151° 21'.17 E  
 34° 10'.93 S 151° 27'.00 E  
 34° 19'.00 S 151° 36'.76 E  
 34° 35'.90 S 152° 03'.61 E  
 34° 44'.17 S 152° 30'.47 E  
 34° 52'.90 S 153° 37'.47 E  
 34° 10'.53 S 154° 48'.90 E  
 33° 37'.23 S 156° 39'.12 E  
 32° 49'.02 S 158° 21'.74 E  
 32° 29'.32 S 160° 30'.40 E  
 31° 35'.41 S 163° 51'.66 E  
 28° 43'.39 S 167° 24'.90 E  
 26° 09'.08 S 171° 07'.87 E  
 25° 17'.87 S 171° 58'.57 E  
 24° 53'.74 S 173° 15'.66 E  
 22° 23'.79 S 176° 56'.83 E  
 19° 46'.50 S 179° 50'.12 E;  
 and  
 27° 44'.61 S 168° 50'.86 E  
 28° 45'.31 S 169° 35'.71 E  
 29° 08'.37 S 170° 22'.22 E  
 30° 17'.91 S 170° 55'.74 E  
 32° 43'.78 S 174° 16'.63 E  
 33° 44'.50 S 174° 59'.16 E  
 35° 30'.00 S 175° 05'.16 E  
 35° 58'.81 S 174° 51'.30 E  
 36° 04'.34 S 174° 35'.55 E;  
 and  
 26° 39'.89 S 170° 14'.36 E  
 25° 53'.90 S 169° 01'.51 E  
 25° 11'.48 S 168° 26'.45 E  
 24° 36'.89 S 166° 55'.17 E  
 23° 33'.95 S 165° 41'.14 E  
 22° 53'.90 S 165° 36'.50 E  
 22° 33'.87 S 165° 52'.99 E  
 22° 16'.14 S 166° 24'.74 E.

Mariners are advised to navigate with caution in the area. 2M clearance requested.

**Chart temporarily affected - Aus 197 - Aus 198 - Aus 489 - Aus 609 - Aus 808 - Aus 4060 (INT 60) - Aus 4601 (INT 601) - Aus 4602 (INT 602) - Aus 4604 (INT 604) - Aus 4643 (INT 643)**

**832(T)/2017 PACIFIC OCEAN - New Caledonia Bain to Lord Howe Rise - Drilling operations completed**

*Former Notice* - 663(T)/2017 is cancelled  
Siem Offshore

Cancel this notice on receipt.

**Chart formerly affected - Aus 4601 (INT 601) - Aus 4602 (INT 602) - Aus 4635 (INT 635)**

**833(T)/2017 AUSTRALIA - QUEENSLAND - Bird Island - Light restored**

*Former Notice* - 560(T)/2017 is cancelled  
Maritime Safety Queensland

Cancel this notice on receipt.

**Chart formerly affected - Aus 252 - Aus 254 - Aus 825**

**834(T)/2017 AUSTRALIA - QUEENSLAND - Ellis Channel - Hovell Bar - Light buoy off station**

Maritime Safety Queensland Notice 392(T)/2017

The south cardinal light buoy, Q(6)+LFl. 15s (10° 34'.05 S 142° 15'.47 E) is off station.

**Chart temporarily affected - Aus 293 - Aus 299**

**835(T)/2017 AUSTRALIA - QUEENSLAND - Rattlesnake Island - Live firing completed**

*Former Notice* - 799(T)/2017 is cancelled  
Maritime Safety Queensland Notice 376(T)/2017

Cancel this notice on receipt.

**Chart formerly affected - Aus 256 - Aus 827**

**836(T)/2017 AUSTRALIA - QUEENSLAND - Shoalwater Bay - Live firing completed**

*Former Notice* - 802(T)/2017 is cancelled  
Maritime Safety Queensland Notice 309(T)/2017

Cancel this notice on receipt.

**Chart formerly affected - Aus 248 - Aus 367 - Aus 820 - Aus 822**

**837(T)/2017 AUSTRALIA - QUEENSLAND - Shoalwater Bay - Live firing**

Maritime Safety Queensland Notice 311(T)/2017

Live firing will be conducted in the Shoalwater Bay training area during the period 14 October to 16 November 2017.

A marine danger area extends to all internal waters bounded by the following positions:

22° 23'.84 S 150° 18'.02 E  
22° 22'.60 S 150° 18'.60 E  
22° 24'.33 S 150° 26'.87 E  
22° 31'.07 S 150° 34'.01 E  
22° 40'.00 S 150° 38'.00 E  
22° 39'.54 S 150° 27'.61 E  
22° 27'.47 S 150° 16'.78 E.

All waters, creeks, beaches and other areas within the declared marine danger area are not available for access.

There will be a safe anchorage available at Freshwater, Port Clinton, West Water Port Clinton, South Arm Port Clinton, Pearl Bay, Island Head Creek and Supply Bay Townshend Island.

Mariners are advised to keep clear of this area throughout the above times.

**Chart temporarily affected - Aus 260 - Aus 261 - Aus 367 - Aus 822**

**838(T)/2017 AUSTRALIA - QUEENSLAND - Townsville - Ross Creek - Harbour works**

Maritime Safety Queensland

Harbour works associated with pontoon remediation are in progress in the vicinity of position 19° 15'.29 S 146° 49'.63 E.

The barge *Coomay* is on site and will monitor VHF Ch 16.

Mariners are advised to navigate with caution in the area.

**Chart temporarily affected - Aus 257****839(T)/2017 AUSTRALIA - QUEENSLAND - Weipa - South Channel - Light beacon destroyed**

Maritime Safety Queensland Notice 396(T)/2017

The light beacon *Fl.R.4s SC 10* (12° 41'.25 S 141° 44'.31 E), has been destroyed; a special light buoy, *Fl.R.4-3s* exists in situ.

**Chart temporarily affected - Aus 4****840(T)/2017 AUSTRALIA - QUEENSLAND - Weipa - Hey River - Exclusion zone**

Maritime Safety Queensland

An exclusion zone for transshipment operations exists in an area bounded by the following positions:

12°44'.20 S 141°53'.50 E

12°44'.20 S 141°54'.05 E

12°45'.00 S 141°54'.16 E

12°45'.00 S 141°53'.58 E.

**Chart temporarily affected - Aus 4****841(T)/2017 PAPUA NEW GUINEA - Port Moresby - Fairfax Harbour - Harbour works completed***Former Notice - 335(T)/2017 is cancelled*

National Maritime Safety Authority PNG Notice12/2017

Cancel this notice on receipt.

**Chart formerly affected - Aus 621 - Aus 622****842(T)/2017 AUSTRALIA - NORTHERN TERRITORY - Joseph Bonaparte Gulf - Maintenance works; moorings**

Bhagwan Marine

MV *Bhagwan Dryden* is conducting maintenance works in the vicinity of position 14° 14'.43 S 129° 21'.03 E.

Lit mooring buoys, with up to 200m of floating pipeline exist in the following positions:

14° 14'.90 S 129° 20'.97 E

14° 14'.89 S 129° 21'.19 E.

Mariners are advised to navigate with caution in the area.

**Chart temporarily affected - Aus 316 - Aus 725****843(T)/2017 AUSTRALIA - WESTERN AUSTRALIA - Barrow Island - Scientific instrument recovered***Former Notice - 1083(T)/2016 is cancelled*

Chevron Australia Pty Ltd Notice 7/2017

Cancel this notice on receipt.

**Chart formerly affected - Aus 65 - Aus 66**

**844(T)/2017 AUSTRALIA - WESTERN AUSTRALIA - Port Hedland - Scientific instruments**

Pilbara Ports Authority Notice 18(T)/2017

Subsurface scientific instruments, marked by lit special buoys exist as follows:

20° 02'.04 S 118° 22'.56 E  
 20° 10'.32 S 118° 33'.96 E  
 20° 09'.00 S 118° 38'.16 E  
 20° 17'.40 S 118° 28'.92 E.

**Chart temporarily affected - Aus 52 - Aus 53****845(T)/2017 AUSTRALIA - VICTORIA - Port Phillip - St Kilda - Obstructions**

Parks Victoria Notice 247/2017

Obstructions with a least depth of 1.8m exist in the entrance to the marina between positions 37° 51'.650 S 144° 57'.746 E and 37° 51'.660 S 144° 57'.753 E.

Mariners are advised to navigate with caution in the area.

**Chart temporarily affected - Aus 155****846(T)/2017 AUSTRALIA - VICTORIA - Port Phillip - Portarlington - Harbour works***Former Notice - 397(T)/2017 is cancelled*

Parks Victoria Notice 115(T)/2016, 174(T)/2016, 95(T)/2017, 244/2017

A new breakwater exists between the following positions:

38° 06'.76 S 144° 39'.44 E  
 38° 06'.63 S 144° 39'.45 E  
 38° 06'.60 S 144° 39'.28 E  
 38° 06'.61 S 144° 39'.26 E.

Harbour works are in progress and exclusion zones marked by special light buoys, *Fl.Y.5s*, exist in area bounded by the following positions:

38° 06'.74 S 144° 39'.28 E  
 38° 06'.71 S 144° 39'.08 E  
 38° 06'.62 S 144° 39'.09 E  
 38° 06'.64 S 144° 39'.30 E.

A port lateral light beacon, *Fl.R.3s*, exists in position 38° 06'.65 S 144° 39'.58 E.

Mariners are advised to navigate with caution in the area.

**Chart temporarily affected - Aus 143 - Aus 157****847(T)/2017 AUSTRALIA - VICTORIA - Snowy River - Pipeline operations completed***Former Notice - 675(T)/2017 is cancelled*

Cooper Energy

Cancel this notice on receipt.

**Chart formerly affected - Aus 357****848(T)/2017 AUSTRALIA - TASMANIA - D'Entrecasteaux Channel - Lippias Point - Marine farm**

Marine and Safety Tasmania Notice M119/17

Works on the marine farm (43° 22'.50 S 147° 04'.25 E) are in progress.

The area will be marked by special light buoys, *Fl.Y.4s*, in the following positions:

43° 23'.28 S 147° 03'.33 E  
 43° 21'.45 S 147° 04'.44 E  
 43° 21'.69 S 147° 05'.19 E  
 43° 23'.52 S 147° 04'.09 E.

**Chart temporarily affected - Aus 173**

II

IV

**HYDROGRAPHIC REPORTS**

NIL

### III

#### **NAVIGATION WARNINGS**

The Australian Hydrographic Service will no longer compile Section III of the Australian Notices to Mariners. For the most up to date navigation warnings please refer to:

AMSA Navigation Warnings

<http://amsa.gov.au/search-and-rescue/distress-and-safety-comms/msi/msi-email/index.asp>

New Zealand Notices to Mariners (Navarea XIV warnings)

<http://www.linz.govt.nz/sea/maritime-safety/notices-mariners>

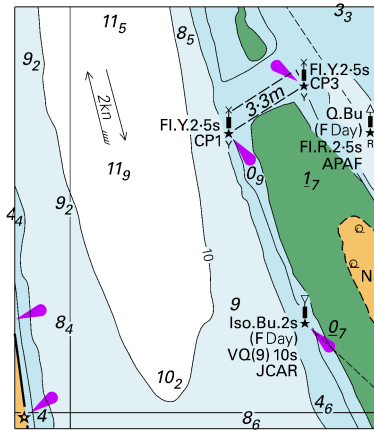
*To accompany Australian Notice to Mariners 825/2017*

ENVIRONMENTALLY SENSITIVE  
SEA AREA (ESSA)

Areas of this chart are Environmentally Sensitive Sea Areas (ESSA). Areas within this marine protected area have restrictions on access and activities. For details see Seafarers Handbook for Australian Waters AHP 20.

*Note for chart Aus 776*

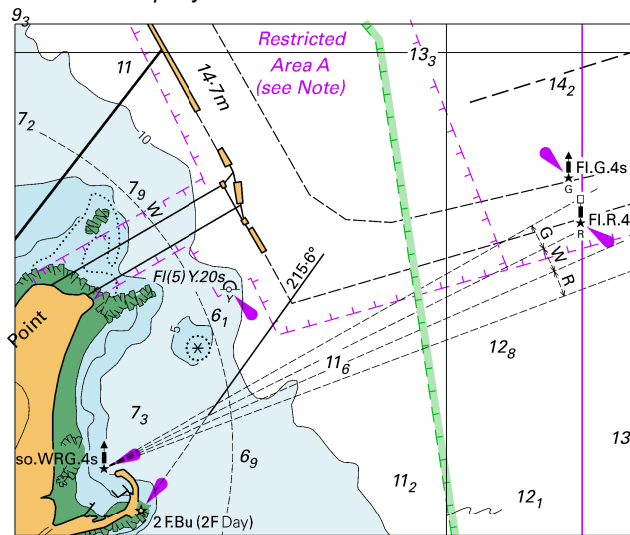
To accompany Australian Notice to Mariners 815/2017



© Commonwealth of Australia 2017  
Block for Chart Aus 245 (47.6 x 55.6mm)



To accompany Australian Notice to Mariners 817/2017



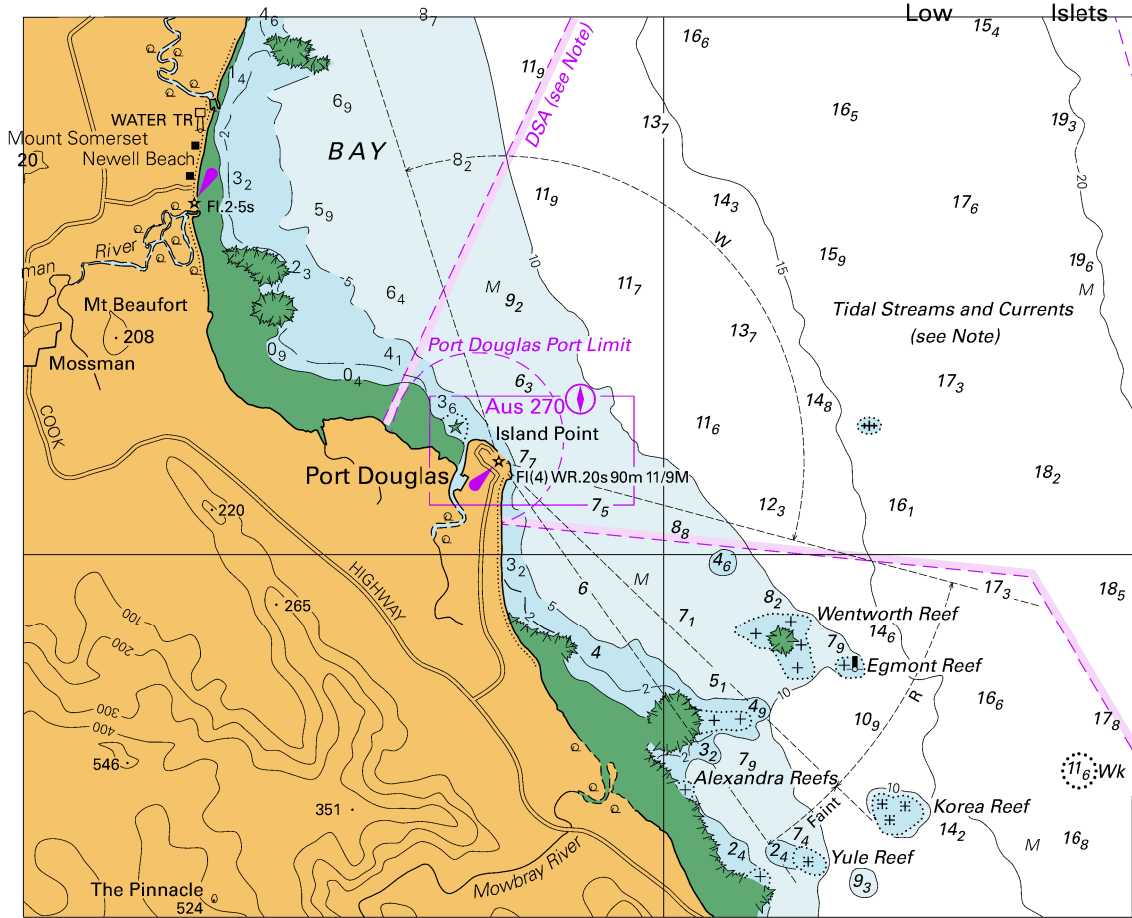
© Commonwealth of Australia 2017

Block for Chart Aus 249

(82.6 x 67.6mm)



To accompany Australian Notice to Mariners 819/2017



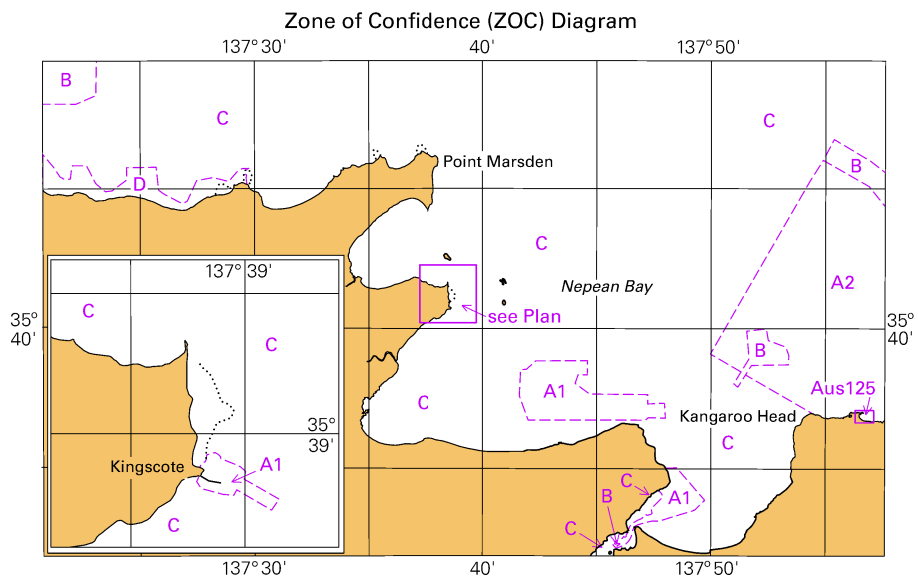
Block for Chart Aus 830

© Commonwealth of Australia 2017

(146.7 x 119.0mm)



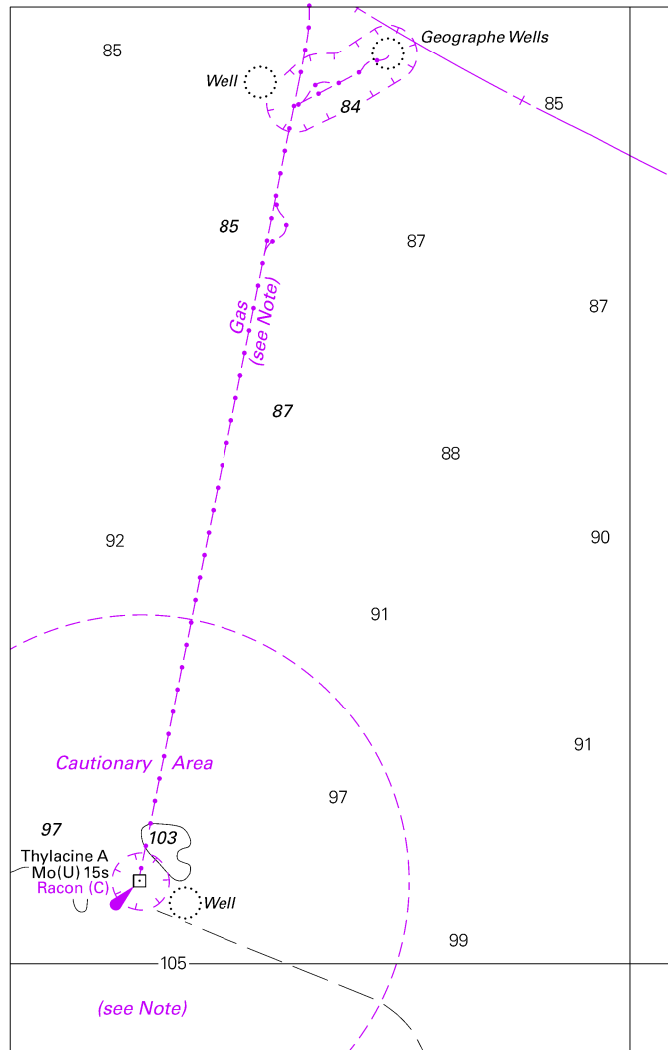
To accompany Australian Notice to Mariners 824/2017



© Commonwealth of Australia 2017

Block B for Chart Aus 129

To accompany Australian Notice to Mariners 826/2017

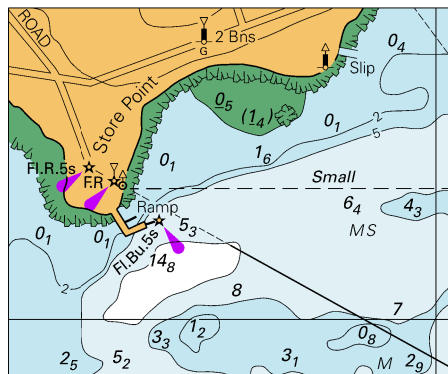


© Commonwealth of Australia 2017

Block for Chart Aus 787

(88.4 x 138.6mm)

To accompany Australian Notice to Mariners 828/2017



© Commonwealth of Australia 2017

Block for Chart Aus 179

(59.1 x 48.4mm)