



8 September 2017

Edition 18

AUSTRALIAN NOTICES TO MARINERS

Notices 717 - 764

Published fortnightly by the Australian Hydrographic Service



Australian Notices to Mariners are the authority for correcting charts and publications published by the Australian Hydrographic Service covering Australia, Papua New Guinea, Solomon Islands, Australian Antarctic Territory and Timor-Leste.

Commodore B.K. BRACE RAN
Hydrographer of Australia

SECTIONS.

- I. **Australian Notices to Mariners, including blocks and notes.**
- II. **Hydrographic Reports.**
- III. **Navigational Warnings.**

SUPPLEMENTS.

- I. **Tracings**
- II. **Cumulative List of Australian Notices to Mariners.**
- III. **Cumulative List of Temporary and Preliminary Australian Notices to Mariners.**
- IV. **Temporary and Preliminary Notices in force.**
- V. **Amendments to Admiralty List of Lights and Fog Signals (Vol K), Radio Signals (NP 281(2), 282, 283(2), 285, 286(4)) and Sailing Directions (NP 9, 13, 14, 15, 33, 34, 35, 36, 39, 44, 51, 60, 61, 62, 100, 136).**

© Commonwealth of Australia 2017

This work is copyright. Apart from any use permitted under the Copyright Act 1968, no part may be reproduced by any process, adapted, communicated or commercially exploited without prior written permission from The Commonwealth represented by the Australian Hydrographic Service.

IMPORTANT NOTICE

This edition of Notices to Mariners includes all significant information affecting AHS products which the AHS has become aware of since the last edition. All reasonable efforts have been made to ensure the accuracy and completeness of the information, including third party information, on which these updates are based. The AHS regards third parties from which it receives information as reliable, however the AHS cannot verify all such information and errors may therefore exist. The AHS does not accept liability for errors in third party information.

GENERAL INSTRUCTIONS

The substance of these notices should be inserted on the charts affected.

Bearings are referred to the true compass and are reckoned clockwise from North; those relating to lights are given as seen by an observer from seaward.

Positions quoted in notices relate to WGS84 which is the horizontal datum for all charts produced by the Australian Hydrographic Service.

The range quoted for a light is its nominal range.

Depths are with reference to the chart datum of each chart. Heights are above mean high water springs or mean higher high water, as appropriate.

The capital letter (P) or (T) after the number of any notice denotes a preliminary or temporary notice respectively, which are contained separately at the end of the permanent notices.

REPORTING OF DANGERS

Mariners are particularly requested to notify the AUSTRALIAN HYDROGRAPHIC SERVICE, Locked Bag 8801 Wollongong, NSW 2500 (Fax 02-4223 6599, e-mail datacentre@hydro.gov.au or, alternatively by filling in and submitting the [Hydrographic Notes](#) forms located on the web site – www.hydro.gov.au), immediately on the discovery of new dangers or suspected dangers to navigation. For changes or defects in aids to navigation notify AusSAR (Fax 02-6230 6868 or email rccaus@amsa.gov.au).

AUTHORISED USE

Copies of Australian notices are available free of charge from the Australian Hydrographic Service (AHS) website (www.hydro.gov.au) and through the eNotices (email) service (www.hydro.gov.au/enotices/enotices.htm).

Individual Notices may be copied for the purpose of inserting Notice substance on official charts and publications. Paper copies may be printed by chart agents and distributed to customers on a cost recovery basis. Participating chart agents are listed on the AHS website as providing a 'Paper Notices to Mariners' service (www.hydro.gov.au/webapps/jsp/agents/agents-list.jsp). Copies of the notices may not be sold for profit without prior written agreement.

NUMERICAL INDEX OF NOTICES TO MARINERS

Edition No 18

Notices	Aus Chart, INT Chart, ENC Cell, AHP, BA Pubs
717	Products - New Charts, New Editions, Withdrawn Charts
718	Aus 399, 4621, 4622, 4635, INT 621, 622, 635
719	Amendment to Australian National Tide Tables 2017
720	Aus 194, 195
721	Aus 4601, INT 601
722	Aus 269
723	Aus 4, 301
724	Aus 245
725	Aus 240, 241
726	Aus 235
727	Aus 378, 502
728	Aus 312, 314, 316, 318, 725, 4721, INT 721
729	Aus 327, 328, 329, 741, 742, 743, 744, 4722, INT 722
730	Aus 313, 321, 4603, 4721, 4722, INT 603, 721, 722
731	Aus 325, 326, 739, 4603, 4722, INT 603, 722
732	Aus 319, 320
733	Aus 755
734	Aus 55
735	Aus 777
736	Aus 781
737	Aus 130, 137
738	Aus 778
739	Aus 182
740	Aus 349, 787
741	Aus 143, 157
742(T)	Aus 191, 193, 194, 195, 196, 197, 198, 200, 201, 202, 203, 204, 207, 208, 209, 215, 216, 217, 219, 220, 221, 222, 489, 806, 807, 808, 809, 810, 811, 812, 813, 4060, 4601, 4602, 4643, INT 60, 601, 602, 643
743(T)	Aus 148, 197, 198, 349, 357, 487, 489, 787, 789, 802, 808, 4601, 4644, 4709, 4728, INT 601, 644, 709, 728
744(T)	Aus 253, 269
745(T)	Aus 269
746(T)	Aus 301
747(T)	Aus 237, 238
748(T)	Aus 237
749(T)	Aus 826
750(T)	Aus 826
751(T)	Aus 250
752(T)	Aus 250
753(T)	Aus 236
754(T)	Aus 236
755(T)	Aus 236
756(T)	Aus 256
757(T)	Aus 15
758(T)	Aus 314, 319
759(T)	Aus 119
760(T)	Aus 57, 327, 741, 742
761(T)	Aus 110
762(T)	Aus 327, 4723, INT 723
763(T)	Aus 324, 325, 4722, INT 722
764(T)	Aus 150, 151, 152

NUMERICAL INDEX OF CHARTS AFFECTED

Edition No 18

Aus Chart	Notices	Aus Chart	Notices
Aus 4	723	Aus 319	732, 758(T)
Aus 15	757(T)	Aus 320	732
Aus 55	734	Aus 321	730
Aus 57	760(T)	Aus 324	763(T)
Aus 110	761(T)	Aus 325	731, 763(T)
Aus 119	759(T)	Aus 326	731
Aus 130	737	Aus 327	729, 760(T), 762(T)
Aus 137	737	Aus 328	729
Aus 143	741	Aus 329	729
Aus 148	743(T)	Aus 349	740, 743(T)
Aus 150	764(T)	Aus 357	743(T)
Aus 151	764(T)	Aus 378	727
Aus 152	764(T)	Aus 399	718
Aus 157	741	Aus 487	743(T)
Aus 182	739	Aus 489	742(T), 743(T)
Aus 191	742(T)	Aus 502	727
Aus 193	742(T)	Aus 725	728
Aus 194	720, 742(T)	Aus 739	731
Aus 195	720, 742(T)	Aus 741	729, 760(T)
Aus 196	742(T)	Aus 742	729, 760(T)
Aus 197	742(T), 743(T)	Aus 743	729
Aus 198	742(T), 743(T)	Aus 744	729
Aus 200	742(T)	Aus 755	733
Aus 201	742(T)	Aus 777	735
Aus 202	742(T)	Aus 778	738
Aus 203	742(T)	Aus 781	736
Aus 204	742(T)	Aus 787	740, 743(T)
Aus 207	742(T)	Aus 789	743(T)
Aus 208	742(T)	Aus 802	743(T)
Aus 209	742(T)	Aus 806	742(T)
Aus 215	742(T)	Aus 807	742(T)
Aus 216	742(T)	Aus 808	742(T), 743(T)
Aus 217	742(T)	Aus 809	742(T)
Aus 219	742(T)	Aus 810	742(T)
Aus 220	742(T)	Aus 811	742(T)
Aus 221	742(T)	Aus 812	742(T)
Aus 222	742(T)	Aus 813	742(T)
Aus 235	726	Aus 826	749(T), 750(T)
Aus 236	753(T), 754(T), 755(T)	Aus 4060	742(T)
Aus 237	747(T), 748(T)	Aus 4601	721, 742(T), 743(T)
Aus 238	747(T)	Aus 4602	742(T)
Aus 240	725	Aus 4603	730, 731
Aus 241	725	Aus 4621	718
Aus 245	724	Aus 4622	718
Aus 250	751(T), 752(T)	Aus 4635	718
Aus 253	744(T)	Aus 4643	742(T)
Aus 256	756(T)	Aus 4644	743(T)
Aus 269	722, 744(T), 745(T)	Aus 4709	743(T)
Aus 301	723, 746(T)	Aus 4721	728, 730
Aus 312	728	Aus 4722	729, 730, 731, 763(T)
Aus 313	730	Aus 4723	762(T)
Aus 314	728, 758(T)	Aus 4728	743(T)
Aus 316	728		
Aus 318	728		

INT Chart	Notices
INT 60	742(T)
INT 601	721, 742(T), 743(T)
INT 602	742(T)
INT 603	730, 731
INT 621	718
INT 622	718
INT 635	718
INT 643	742(T)
INT 644	743(T)
INT 709	743(T)
INT 721	728, 730
INT 722	729, 730, 731, 763(T)
INT 723	762(T)
INT 728	743(T)

717 AUSTRALIA - Products - New Charts, New Editions, Withdrawn Charts

Australian Hydrographic Service

New Charts

<i>Chart</i>	<i>Title and Geographical limits</i>	<i>Scale</i>	<i>Publication Date</i>	<i>Remarks</i>
NIL				

New Electronic Navigation Chart (Aus ENC)

<i>Cell Name</i>	<i>Title</i>	<i>Publication Date</i>	<i>Remarks</i>
NIL			

New Editions and Withdrawn Charts

<i>Chart</i>	<i>Title</i>	<i>Scale</i>	<i>Publication Date</i>	<i>Remarks</i>
NIL				

Australian National Tide Tables 2017

<i>AHP No</i>	<i>Title</i>	<i>Recommended retail price (incl GST)</i>	<i>Remarks</i>
AHP11	Australian National Tide Tables (ANTT) 2018	\$64.90	Paper Australian National Tide Tables 2018 for Australia, Antarctica, Papua New Guinea, Solomon Islands and East Timor. Provides tidal information for 2018. Available from accredited chart distribution agents.

Chart permanently withdrawn

Charts listed above as withdrawn no longer meet chart carriage requirements and should be marked as "superseded" and replaced with the new chart/ new edition listed prior to passage through the area covered by the new chart.

When placing orders with a chart agent between notice of forthcoming edition and its publication, mariners should advise whether their order pertains to the current edition or the new edition.

For further details refer to the AHS website at www.hydro.gov.au for new edition and new chart stock arrival information.

718 AUSTRALIA - Products- New Charts and New Editions to be published shortly
 Australian Hydrographic Service

New Charts to be published shortly

<i>Chart</i>	<i>Title</i>	<i>Scale</i>	<i>Expected Publication Date</i>	<i>Remarks</i>
NIL				

New Editions to be published shortly

<i>Chart</i>	<i>Title</i>	<i>Scale</i>	<i>Expected Publication Date</i>	<i>Remarks</i>
Aus 399	South Pacific Ocean - Bougainville Island	1:300 000	22 September 2017	General updating due to adoption of Solomon Islands charting.
Aus 4621	Coral and Solomon Seas - Mackay to Solomon Islands	1:1 500 000	22 September 2017	General updating due to adoption of Solomon Islands charting.
Aus 4622	South Pacific Island - Admiralty Islands to Solomon Islands	1:1 500 000	22 September 2017	General updating due to adoption of Solomon Islands charting.
Aus 4635	Australia - East Coast - Cape Byron to Mackay	1:1 500 000	22 September 2017	General updating due to adoption of Solomon Islands charting.

719 AUSTRALIA - Product - Amendment to Australian National Tide Tables 2017

Australian Hydrographic Service

Page 362

Amend Chart Datum correction for Katurasele (Port No 56362) to 0.0
 Chart Datum correction for Vaghena Island (Port No 56380) to 0.0
 Chart Datum correction for Gizo Anchorage (Port No 56460) to 0.0
 Chart Datum correction for Blackett Strait (Port No 56470) to 0.0
 Chart Datum correction for Munda Point (Port No 56480) to 0.0
 Chart Datum correction for Viru Harbour (Port No 56490) to 0.0
 Chart Datum correction for Marovo Lagoon (Port No 56510) to 0.0
 Chart Datum correction for Monggo Passage (Port No 56520) to 0.0
 Chart Datum correction for Lolomo Passage (Port No 56540) to 0.0
 Chart Datum correction for Nughu Island (Port No 56690) to 0.0

Page 363

Amend Chart Datum correction for Mbungana Island (Port No 56710) to 0.0
 Chart Datum correction for Sandfly Passage (Port No 56750) to 0.0
 Chart Datum correction for Thousand Ships Bay (Port No 56780) to 0.0
 Chart Datum correction for Bina Harbour (Port No 56910) to 0.0

Page 452

Amend Anewa Bay To Chart Datum AUS 683 NE 26 AUG 2016 SUBTRACT 0.2
Insert Anewa Bay To Chart Datum SLB 301 NC 11 AUG 2017 0.0

Page 455

Remove Honiara To Chart Datum Largest scale chart not published by the Australian Hydrographic Service 0.0
Insert Honiara To Chart Datum SLB 101 NC 11 AUG 2017 SUBTRACT 0.2
 Honiara To Chart Datum SLB 201 NC 11 AUG 2017 SUBTRACT 0.2
 Honiara To Chart Datum SLB 303 NC 11 AUG 2017 SUBTRACT 0.2
 Honiara To Chart Datum SLB 304 NC 11 AUG 2017 SUBTRACT 0.2

Page 457

Insert Ndende Island Wharf To Chart Datum SLB 107 NC 11 AUG 2017 0.0

Page 459

Insert Tarekukure Wharf To Chart Datum SLB 1206 NC 11 AUG 2017 SUBTRACT 0.2

Page 460

Amend Wyndham To Chart Datum AUS 32 NE 11 AUG 2017 SUBTRACT 0.1

Page 461

Amend Yamba To Chart Datum AUS 222 NE 11 AUG 2017 0.0

720 AUSTRALIA - NEW SOUTH WALES - Port Kembla - Depths

Port Authority of New South Wales

Aus 194 [543/2017]

Insert	depth, 14 _g m, and extend contour NE to enclose	34° 27'.774 S	150° 55'.006 E
	depth, 26 _g m	34° 28'.107 S	150° 56'.461 E
Delete	depth, 31m, and enclosing contour	34° 28'.11 S	150° 56'.43 E

Aus 195 [543/2017]

Insert	depth, 14 _g m, and extend contour NE to enclose	34° 27'.774 S	150° 55'.006 E
Delete	depth, 14 _g m	34° 27'.80 S	150° 54'.98 E

721* AUSTRALIA - TASMAN SEA - Tasman Basin - Light buoy amended

Bureau of Meteorology

Aus 4601 (INT 601) [398/2017]

Amend	light buoy to <i>Fl.2s</i>	44° 54'.0 S	161° 50'.0 E
-------	----------------------------	-------------	--------------

722 AUSTRALIA - QUEENSLAND - Airlie Beach - Nav aids; obstructions removed

Maritime Safety Queensland

Aus 269 (plan, Airlie Beach) [247/2017]

Insert	light beacon, <i>Fl.G.2-5s No 13</i> , with starboard lateral topmark	20° 16'.335 S	148° 43'.597 E
Delete	structure colour, G	20° 15'.50 S	148° 43'.64 E
	structure colour, R	20° 15'.50 S	148° 43'.68 E
	structure colour, G	20° 15'.72 S	148° 43'.65 E
	structure colour, R	20° 15'.72 S	148° 43'.68 E
	structure colour, G	20° 15'.94 S	148° 43'.65 E
	structure colour, R	20° 15'.94 S	148° 43'.68 E
	structure colour, Y	20° 16'.06 S	148° 43'.63 E
	structure colour, R	20° 16'.17 S	148° 43'.68 E
	structure colour, R	20° 16'.27 S	148° 43'.66 E
	structure colour, Y	20° 16'.22 S	148° 43'.62 E
	structure colour, R	20° 16'.32 S	148° 43'.66 E
	light	20° 16'.32 S	148° 43'.60 E
	structure colour, R	20° 16'.40 S	148° 43'.60 E
	buoy	20° 15'.88 S	148° 42'.56 E
	obstruction, centred on	20° 15'.87 S	148° 42'.56 E
	obstruction, centred on	20° 15'.87 S	148° 42'.60 E

723 AUSTRALIA - QUEENSLAND - Boyd Point - Fish aggregating devices

Maritime Safety Queensland Notice 339/2017

Aus 4 [695/2017]

Amend	light description to <i>Fl.Y.4s</i>	12° 49'.9 S	141° 32'.6 E
-------	-------------------------------------	-------------	--------------

Aus 301 [695/2017]

Insert	special conical light buoy, <i>Fl.Y.4s</i> , without topmark	12° 58'.96 S	141° 17'.01 E
Amend	light description to <i>Fl.Y.4s</i>	12° 54'.7 S	141° 22'.6 E
	light description to <i>Fl.Y.4s</i>	12° 48'.7 S	141° 23'.7 E
	light description to <i>Fl.Y.4s</i>	12° 49'.9 S	141° 32'.6 E
Delete	depth, 30, m	12° 58'.9 S	141° 16'.9 E

724 AUSTRALIA - QUEENSLAND - Gladstone - North Channel - Nav aids

Maritime Safety Queensland 301/2017

Aus 245 [690/2017]

Insert	port lateral pillar light buoy, <i>Fl.R.2-5s N6</i> , with topmark	23° 47'.134 S	151° 18'.345 E
Delete	light beacon	23° 47'.14 S	151° 18'.39 E

725 AUSTRALIA - QUEENSLAND - Great Sandy Strait - Nav aids

Maritime Safety Queensland

Aus 240 [1235/2016]

Insert	starboard lateral topmark	25° 36'.88 S	152° 57'.12 E
	port lateral topmark	25° 32'.62 S	152° 55'.31 E
	starboard lateral topmark	25° 31'.91 S	152° 56'.28 E
Replace	light buoy, with port lateral cylindrical light buoy, <i>Fl.R.2-5s</i> , with topmark	25° 31'.7 S	152° 56'.7 E

Aus 241 [359/2017]

Insert	starboard lateral topmark	25° 31'.91 S	152° 56'.28 E
	starboard lateral topmark	25° 19'.29 S	153° 00'.07 E
Replace	light buoy, with port lateral cylindrical light buoy, <i>Fl.R.2-5s</i> , with topmark	25° 31'.7 S	152° 56'.7 E

726 AUSTRALIA - QUEENSLAND - Mooloolaba - Topmark
Maritime Safety Queensland

Aus 235 (plan, Mooloolaba Harbour) [689/2017]

Delete topmark 26° 40'.94 S 153° 08'.14 E

727 PAPUA NEW GUINEA - Gulf of Papua - Chart note
Australian Hydrographic Service

Aus 378 [548/2017]

Replace CA note, with accompanying note 8° 46'.0 S 143° 05'.0 E

Aus 502 [548/2017]

Replace CA note, with accompanying note 7° 37'.5 S 145° 18'.0 E

728 AUSTRALIA - TIMOR SEA - Sahul Banks to Joseph Bonaparte Gulf - Chart note
Australian Hydrographic Service

Note: existing positions of chart notes may vary on certain charts.

Aus 312 [601/2017]

Replace CA note, with accompanying note 8° 58'.0 S 125° 54'.0 E

Aus 314 [452/2017]

Insert accompanying note 12° 51'.0 S 125° 58'.0 E

Delete CA note 12° 33'.0 S 125° 58'.0 E

Aus 316 [136/2017]

Insert accompanying note 14° 22'.0 S 130° 20'.0 E

Delete CA note 14° 23'.5 S 130° 31'.0 E

Aus 318 [289/2016]

Insert accompanying note 14° 50'.0 S 126° 20'.0 E

Delete CA note 14° 47'.0 S 127° 07'.0 E

Aus 725 [344/2016]

Insert accompanying note 14° 20'.5 S 129° 40'.5 E

Delete CA note 14° 18'.5 S 129° 40'.5 E

Aus 4721 (INT 721) [601/2017]

Delete CA note 14° 16'.0 S 134° 56'.0 E

legend, Cautionary Area (see Note), centred on 10° 36'.0 S 126° 04'.0 E

legend, Cautionary Area (see Note), centred on 10° 58'.0 S 126° 46'.0 E

legend, Cautionary Area (see Note), centred on 13° 53'.0 S 128° 39'.0 E

729 AUSTRALIA - TIMOR SEA - Sahul Banks to North West Cape - Chart note

Australian Hydrographic Service

Note: existing positions of chart notes may vary on certain charts.

Aus 327 [555/2017]			
Insert	accompanying note	21° 26'.0 S	115° 58'.0 E
Delete	CA note	21° 22'.0 S	117° 13'.0 E
Aus 328 [607/2017]			
Insert	accompanying note	19° 14'.0 S	114° 03'.0 E
Delete	CA note	21° 57'.0 S	115° 13'.0 E
Aus 329 [605/2017]			
Insert	accompanying note	22° 53'.0 S	113° 57'.0 E
Delete	CA note	22° 41'.5 S	114° 19'.0 E
Aus 741 [553/2017]			
Insert	accompanying note	20° 44'.0 S	116° 42'.0 E
Delete	CA note	20° 46'.5 S	117° 05'.0 E
Aus 742 [647/2017]			
Insert	accompanying note	20° 53'.0 S	116° 14'.5 E
Delete	CA note	20° 53'.0 S	116° 24'.0 E
Aus 743 [607/2017]			
Insert	accompanying note	21° 28'.0 S	116° 08'.5 E
Delete	CA note	21° 25'.0 S	116° 03'.0 E
Aus 744 [53/2017]			
Replace	CA note, with accompanying note	22° 08'.0 S	114° 55'.5 E
Aus 4722 (INT 722) [505/2017]			
Delete	CA note legend, Cautionary Area (see Note), centred on	19° 30'.0 S 19° 07'.0 S	125° 15'.0 E 116° 39'.0 E
730 INDONESIA - Timor - Lights			
UKHO (26/2911/2017)			
Aus 313 [1353/2015]			
Insert	light, Q(6) 15s 45m 20M	09° 28'.02 S	125° 04'.90 E
Aus 321 [1353/2015]			
Insert	light, Q(6) 15s 45m 20M	09° 28'.02 S	125° 04'.90 E
	light, Q(6) 15s 45m 20M	9° 10'.50 S	124° 28'.60 E
Aus 4603 (INT 603) [505/2017]			
Insert	light	09° 28'.0 S	125° 04'.9 E
	light	9° 10'.5 S	124° 28'.6 E
Aus 4721 (INT 721) [728/2017]			
Insert	light, Q(6) 20M	09° 28'.0 S	125° 04'.9 E
	light, Q(6) 20M	9° 10'.5 S	124° 28'.6 E
Aus 4722 (INT 722) [729/2017]			
Insert	light, Q(6) 20M	09° 28'.0 S	125° 04'.9 E
	light, Q(6) 20M	9° 10'.5 S	124° 28'.6 E

731* AUSTRALIA - WESTERN AUSTRALIA - Bedout Island - Racon discontinued

Australian Maritime Safety Authority ATH 2017/20

Aus 325 [57/2017]

Delete magenta circle, with magenta legend Racon (O) 19° 35'.4 S 119° 06'.0 E

Aus 326 [553/2017]

Delete magenta circle, with magenta legend Racon (O) 19° 35'.4 S 119° 06'.0 E

Aus 739 [59/2017]

Delete magenta circle, with magenta legend Racon (O) 19° 35'.4 S 119° 06'.0 E

Aus 4603 (INT 603) [730/2017]

Delete magenta circle, with magenta legend Racon (O) 19° 35'.4 S 119° 06'.0 E

Aus 4722 (INT 722) [730/2017]

Delete magenta circle, with magenta legend Racon (O) 19° 35'.4 S 119° 06'.0 E

732 AUSTRALIA - WESTERN AUSTRALIA - Browse Island - Racon

INPEX

Aus 319 [698/2017]

Amend racon to (G) 13° 57'.9 S 123° 18'.9 E

Aus 320 [698/2017]

Amend racon to (G) 13° 57'.9 S 123° 18'.9 E

733 AUSTRALIA - WESTERN AUSTRALIA - Dawesville - Light beacon removed

Department of Transport WA (WA913-9)

Aus 755 [507/2017]

Delete light beacon 32° 36'.9 S 115° 38'.8 E

734 AUSTRALIA - WESTERN AUSTRALIA - Port Walcott - Recommended track; anchorages; anchoring prohibited areas

Rio Tinto

Note: Aus 740 and Aus 741 will be updated in due course.

Aus 55 [209/2017]

Insert	accompanying block A	20° 32'.0 S	117° 17'.0 E
	accompanying block B	20° 27'.0 S	117° 23'.5 E
	anchoring prohibited limit, with legend, <i>Emergency Waiting Area 3</i> ,	20° 28'.60 S	117° 17'.16 E
	between	20° 28'.35 S	117° 17'.13 E
		20° 28'.03 S	117° 17'.40 E
		20° 27'.92 S	117° 18'.70 E
		20° 28'.41 S	117° 18'.78 E

735 AUSTRALIA - SOUTH AUSTRALIA - Cape Elizabeth - Light beacon

Department of Planning, Transport and Infrastructure SA

Aus 777 [411/2017]

Delete structure colour, YBY 34° 07'.7 S 137° 26'.3 E

736 AUSTRALIA - SOUTH AUSTRALIA - Gulf St Vincent - Port Noarlunga - Bearing

Department of Planning, Transport and Infrastructure SA

Aus 781 [608/2017]

Amend bearing to, 075.5° 35° 09'.5 S 138° 26'.0 E

737 AUSTRALIA - SOUTH AUSTRALIA - Port of Adelaide - Depths

Department of Planning, Transport and Infrastructure SA Notice 11/2017

Aus 130 [703/2017]

Insert Block 34° 47'.67 S 138° 31'.08 E

Aus 137 [653/2017]

Insert Block 34° 47'.68 S 138° 30'.75 E

738 AUSTRALIA - SOUTH AUSTRALIA - Spencer Gulf - Woods Point - Beacon

Department of Planning, Transport and Infrastructure SA

Aus 778 [456/2017]

Delete Structure colour, G 33° 22'.3 S 137° 47'.4 E

739 AUSTRALIA - VICTORIA - Lakes Entrance - Signal stations

Gippsland Ports

Aus 182 (plan, Lakes Entrance) [283/2017]Insert legend, SS (*Traffic*) at light 37° 53'.223 S 147° 58'.240 E
legend, SS (*Traffic*) at light 37° 53'.414 S 147° 58'.422 E**740 AUSTRALIA - VICTORIA - Port Campbell - Chart note**

Australian Hydrographic Service

Aus 349 [249/2017]

Insert accompanying note 38° 17'.5 S 144° 03'.0 E

Delete CA note 38° 45'.0 S 143° 29'.0 E

Aus 787 [249/2017]

Insert accompanying note 38° 40'.0 S 143° 16'.0 E

Delete CA note 38° 41'.5 S 143° 21'.5 E

741 AUSTRALIA - VICTORIA - Port Phillip - Long Reef - Light beacons

Parks Victoria Notice 228/2017

Aus 143 [658/2017]

Replace beacon, with south cardinal light beacon, VQ(6)+LFI.10s, with topmark 38° 02'.0 S 144° 38'.4 E

Aus 157 [170/2017]Replace beacon, with south cardinal light beacon, Q(6)+LFI.15s, with topmark 38° 01'.88 S 144° 35'.72 E
beacon, with south cardinal light beacon, VQ(6)+LFI.10s, with topmark 38° 02'.03 S 144° 38'.36 E

742(T)/2017 AUSTRALIA - NEW SOUTH WALES - Tasman Sea - Scientific Survey

Australian Maritime Safety Authority Auscoast Warning 161/2017

SPV *Investigator* is towing and deploying scientific equipment in an area bounded by the following positions:

36° 30'.0 S 150° 20'.0 E
 36° 30'.0 S 156° 00'.0 E
 29° 16'.0 S 156° 00'.0 E
 29° 16'.0 S 150° 20'.0 E.

Mariners are advised to navigate with caution in the area. 2M clearance requested.

Chart temporarily affected - Aus 191 - Aus 193 - Aus 194 - Aus 195 - Aus 196 - Aus 197 - Aus 198 - Aus 200 - Aus 201 - Aus 202 - Aus 203 - Aus 204 - Aus 207 - Aus 208 - Aus 209 - Aus 215 - Aus 216 - Aus 217 - Aus 219 - Aus 220 - Aus 221 - Aus 222 - Aus 489 - Aus 806 - Aus 807 - Aus 808 - Aus 809 - Aus 810 - Aus 811 - Aus 812 - Aus 813 - Aus 4060 (INT 60) - Aus 4601 (INT 601) - Aus 4602 (INT 602) - Aus 4643 (INT 643)

743(T)/2017 AUSTRALIA - NEW SOUTH WALES - VICTORIA - Sydney to Bass Strait - Survey operations

EGS Survey Pty Ltd

MV *Geo Resolution* towing a cable up to 4500m in length is conducting survey operations between the following positions:

33° 55'.14 S 151° 15'.63 E
 34° 17'.80 S 151° 40'.50 E
 and
 39° 09'.11 S 148° 47'.51 E
 39° 30'.50 S 142° 49'.39 E

Chart temporarily affected - Aus 148 - Aus 197 - Aus 198 - Aus 349 - Aus 357 - Aus 487 - Aus 489 - Aus 787 - Aus 789 - Aus 802 - Aus 808 - Aus 4601 (INT 601) - Aus 4644 (INT 644) - Aus 4709 (INT 709) - Aus 4728 (INT 728)

744(T)/2017 AUSTRALIA - QUEENSLAND - Airlie Beach - Abel Point Marina - Harbour works completed

Former Notice - 289(T)/2017 is cancelled

Maritime Safety Queensland

Cancel this notice on receipt.

Chart formerly affected - Aus 253 - Aus 269

745(T)/2017 AUSTRALIA - QUEENSLAND - Airlie Beach - Muddy Bay - Wreck

Maritime Safety Queensland 361(T)/2017

A wreck exists in position 20° 16'.04 S 148° 43'.94 E.

Mariners are advised to navigate with caution in the area.

Chart temporarily affected - Aus 269

746(T)/2017 AUSTRALIA - QUEENSLAND - Boyd Point - Mooring buoys

Maritime Safety Queensland Notice 354(T)/2017

Six lit mooring buoys, Q.Y, exist in the vicinity of position 12° 54'.48 S 141° 38'.46 E.

Mariners are advised to navigate with caution in the area.

Chart temporarily affected - Aus 301

747(T)/2017 AUSTRALIA - QUEENSLAND - Brisbane - Lytton and Quarantine Reach - Harbour works

Former Notice - 518(T)/2017 is cancelled
Maritime Safety Queensland (352(T)/2017)

Construction of a new wharf is in progress in the vicinity of position 27° 24'.97 S 153° 08'.45 E.

An exclusion zone marked by special light buoys, *Fl. Y. 1-5s*, exists around the works.

The barges *Peale* and *Aqane* are on site and will monitor VHF Ch12.

Mariners are advised to navigate with caution in the area.

Chart temporarily affected - Aus 237 - Aus 238**748(T)/2017 AUSTRALIA - QUEENSLAND - Brisbane River - Luggage Point - Scientific instruments**

Maritime Safety Queensland

Scientific instruments exist in the following positions:

27° 22'.99 S 153° 09'.30 E

27° 23'.06 S 153° 09'.27 E

Mariners are requested not to anchor, fish or trawl within 50 metres of the equipment.

Chart temporarily affected - Aus 237**749(T)/2017 AUSTRALIA - QUEENSLAND - Cape Upstart - Light buoy restored**

Former Notice - 660(T)/2016 is cancelled
Maritime Safety Queensland

Cancel this notice on receipt.

Chart formerly affected - Aus 826**750(T)/2017 AUSTRALIA - QUEENSLAND - Flagstaff Bay - Light unlit**

Maritime Safety Queensland 356(T)/2017

The light, *Fl. 4s 3M* (19° 45'.32 S 147° 44'.76 E), is unlit.

Chart temporarily affected - Aus 826**751(T)/2017 AUSTRALIA - QUEENSLAND - Mackay Harbour - Traffic signal station unlit**

Maritime Safety Queensland Notice 349(T)/2017

The traffic signal station (21° 06'.62 S 149° 13'.82 E) is unlit.

Chart temporarily affected - Aus 250**752(T)/2017 AUSTRALIA - QUEENSLAND - Mackay Harbour - Harbour works**

Maritime Safety Queensland Notice 364(T)/2017

Demolition is in progress in the vicinity of Loves Jetty and adjacent tug berths (21° 06'.54 S 149° 13'.59 E).

Vessels *PMG Swordfish* and *PMG 121* are on site and will monitor VHF Ch 16 and Ch 13.

Mariners are advised to navigate with caution in the area.

Chart temporarily affected - Aus 250

753(T)/2017 AUSTRALIA - QUEENSLAND - Moreton Bay - Redcliffe - Light beacon restored

Former Notice - 469(T)/2017 is cancelled
Maritime Safety Queensland Notice 278/2017

Cancel this notice on receipt.

Chart formerly affected - Aus 236**754(T)/2017 AUSTRALIA - QUEENSLAND - Moreton Bay - Waterloo Bay - Dredging operations**

Maritime Safety Queensland Notice 365(T)/2017

The dredge *Ken Harvey* and support vessels *Turtle*, *Sealion* and *Frank Wilson* are conducting dredging operations in the entrance channel (27° 28'.08 S 153° 13'.25 E).

Barges *Hercules* and *Samson* are moored in the following positions:

27° 27'.20 S 153° 12'.87 E

27° 27'.25 S 153° 12'.99 E

The dredge will display appropriate lights and shapes and will monitor VHF Ch 13.

Mariners are advised to navigate with caution in the area.

Chart temporarily affected - Aus 236**755(T)/2017 AUSTRALIA - QUEENSLAND - Moreton Bay - Raby Bay - Dredging operations completed**

Former Notice - 177(T)/2017 is cancelled
Maritime Safety Queensland

Cancel this notice on receipt.

Chart formerly affected - Aus 236**756(T)/2017 AUSTRALIA - QUEENSLAND - Townsville - Cleveland Bay - Diving operations**

Maritime Safety Queensland

Vessel *PMG Sailfish* and barge *PMG 123* are conducting diving operations in the vicinity of position 19° 12'.03 S 146° 50'.36 E.

Vessels will monitor VHF Ch 16.

Mariners are advised to navigate with caution in the area.

Chart temporarily affected - Aus 256**757(T)/2017 AUSTRALIA - NORTHERN TERRITORY - Gove Harbour - Light buoy off station**

Rio Tinto

The port lateral light buoy, *Fl.R.2s Freds Buoy* (12° 12'.68 S 136° 40'.65 E), is off station.

Chart temporarily affected - Aus 15**758(T)/2017 AUSTRALIA - TIMOR SEA - Vulcan Shoal - Drill rig northeastwards**

MODU *Noble Tom Prosser*

Drill rig *Noble Tom Prosser* is conducting drilling operations in position 12° 40'.34 S 124° 32'.36 E.

Chart temporarily affected - Aus 314 - Aus 319

759(T)/2017 AUSTRALIA - WESTERN AUSTRALIA - Bandy Creek Boat Harbour - Dredging operations completed

Former Notice - 303(T)/2017 is cancelled
Department of Transport WA

Cancel this notice on receipt.

Chart formerly affected - Aus 119

760(T)/2017 AUSTRALIA - WESTERN AUSTRALIA - Dampier Archipelago - Obstructions

Far Sirius

Cables marked by two unlit pink buoys exists on the seabed in position 20° 28'.48 S 116° 28'.39 E.

Chart temporarily affected - Aus 57 - Aus 327 - Aus 741 - Aus 742

761(T)/2017 AUSTRALIA - WESTERN AUSTRALIA - Emu Point - Scientific instrument

Southern Ports Authority

A subsurface scientific instrument, 0.5m above the seabed, exists in position 35° 00'.22 S 117° 56'.68 E.

Chart temporarily affected - Aus 110

762(T)/2017 AUSTRALIA - WESTERN AUSTRALIA - Rankin Bank - Drill rig

Former Notice - 269(T)/2017 is cancelled
Woodside Energy Ltd

Drill rig *Ocean Apex* is conducting drilling operations in position 19° 47'.64 S 115° 43'.45 E.

Chart temporarily affected - Aus 327 - Aus 4723 (INT 723)

763(T)/2017 AUSTRALIA - WESTERN AUSTRALIA - Rowley Shoals - Scientific instruments

Macquarie University

Subsurface scientific instruments exist on the seabed in the following positions:

16° 46'.28 S 119° 41'.66 E
16° 29'.00 S 119° 29'.36 E
16° 11'.72 S 119° 17'.10 E
15° 54'.43 S 119° 04'.87 E
15° 37'.14 S 118° 52'.67 E
15° 28'.82 S 118° 46'.12 E
17° 06'.38 S 119° 49'.06 E
17° 27'.30 S 119° 57'.05 E
17° 46'.19 S 120° 10'.60 E
18° 05'.10 S 120° 24'.16 E
18° 24'.34 S 120° 37'.22 E

Chart temporarily affected - Aus 324 - Aus 325 - Aus 4722 (INT 722)

764(T)/2017 AUSTRALIA - VICTORIA - Western Port - Hanns Inlet - Light beacons unlit

HMAS Cerberus

The light beacons, *Fl.G.8s* (38° 23'.26 S 145° 13'.95 E) and *Fl.R.8s* (38° 23'.30 S 145° 13'.94 E) are unlit.

Chart temporarily affected - Aus 150 - Aus 151 - Aus 152

II

HYDROGRAPHIC REPORTS

NIL

III

NAVIGATION WARNINGS

The Australian Hydrographic Service will no longer compile Section III of the Australian Notices to Mariners. For the most up to date navigation warnings please refer to:

AMSA Navigation Warnings

<http://amsa.gov.au/search-and-rescue/distress-and-safety-comms/msi/msi-email/index.asp>

New Zealand Notices to Mariners (Navarea XIV warnings)

<http://www.linz.govt.nz/sea/maritime-safety/notices-mariners>

To accompany Australian Notice to Mariners 727/2017

CAUTIONARY AREA AND PETROLEUM
SAFETY ZONE

Mariners are advised to exercise caution and allow an adequate safe distance when navigating in close proximity to offshore oil and gas structures. Within the Cautionary Area a Petroleum Safety Zone extends for a radius of 500 metres around offshore structures into which entry is prohibited to all unauthorised vessels. For details see Seafarers Handbook for Australian Waters AHP 20.

Note for chart Aus 378

To accompany Australian Notice to Mariners 728/2017

CAUTIONARY AREA AND PETROLEUM
SAFETY ZONE

Mariners are advised to exercise caution and allow an adequate safe distance when navigating in close proximity to offshore oil and gas structures. Within the Cautionary Area a Petroleum Safety Zone extends for a radius of 500 metres around offshore structures into which entry is prohibited to all unauthorised vessels. For details see Seafarers Handbook for Australian Waters AHP 20.

Note for chart Aus 312

To accompany Australian Notice to Mariners 728/2017

CAUTIONARY AREA AND PETROLEUM
SAFETY ZONE

Mariners are advised to exercise caution and allow an adequate safe distance when navigating in close proximity to offshore oil and gas structures. Within the Cautionary Area a Petroleum Safety Zone extends for a radius of 500 metres around offshore structures into which entry is prohibited to all unauthorised vessels. For details see Seafarers Handbook for Australian Waters AHP 20.

Note for chart Aus 316

To accompany Australian Notice to Mariners 728/2017

CAUTIONARY AREA AND PETROLEUM
SAFETY ZONE

Mariners are advised to exercise caution and allow an adequate safe distance when navigating in close proximity to offshore oil and gas structures. Within the Cautionary Area a Petroleum Safety Zone extends for a radius of 500 metres around offshore structures into which entry is prohibited to all unauthorised vessels. For details see Seafarers Handbook for Australian Waters AHP 20.

Note for chart Aus 725

To accompany Australian Notice to Mariners 727/2017

CAUTIONARY AREA AND PETROLEUM
SAFETY ZONE

Mariners are advised to exercise caution and allow an adequate safe distance when navigating in close proximity to offshore oil and gas structures. Within the Cautionary Area a Petroleum Safety Zone extends for a radius of 500 metres around offshore structures into which entry is prohibited to all unauthorised vessels. For details see Seafarers Handbook for Australian Waters AHP 20.

Note for chart Aus 502

To accompany Australian Notice to Mariners 728/2017

CAUTIONARY AREA AND PETROLEUM
SAFETY ZONE

Mariners are advised to exercise caution and allow an adequate safe distance when navigating in close proximity to offshore oil and gas structures. Within the Cautionary Area a Petroleum Safety Zone extends for a radius of 500 metres around offshore structures into which entry is prohibited to all unauthorised vessels. For details see Seafarers Handbook for Australian Waters AHP 20.

Note for chart Aus 314

To accompany Australian Notice to Mariners 728/2017

CAUTIONARY AREA AND PETROLEUM
SAFETY ZONE

Mariners are advised to exercise caution and allow an adequate safe distance when navigating in close proximity to offshore oil and gas structures. Within the Cautionary Area a Petroleum Safety Zone extends for a radius of 500 metres around offshore structures into which entry is prohibited to all unauthorised vessels. For details see Seafarers Handbook for Australian Waters AHP 20.

Note for chart Aus 318

To accompany Australian Notice to Mariners 729/2017

CAUTIONARY AREA AND PETROLEUM
SAFETY ZONE

Mariners are advised to exercise caution and allow an adequate safe distance when navigating in close proximity to offshore oil and gas structures. Within the Cautionary Area a Petroleum Safety Zone extends for a radius of 500 metres around offshore structures into which entry is prohibited to all unauthorised vessels. For details see Seafarers Handbook for Australian Waters AHP 20.

Note for chart Aus 327

To accompany Australian Notice to Mariners 729/2017

CAUTIONARY AREA AND PETROLEUM
SAFETY ZONE

Mariners are advised to exercise caution and allow an adequate safe distance when navigating in close proximity to offshore oil and gas structures. Within the Cautionary Area a Petroleum Safety Zone extends for a radius of 500 metres around offshore structures into which entry is prohibited to all unauthorised vessels. For details see Seafarers Handbook for Australian Waters AHP 20.

Note for chart Aus 328

To accompany Australian Notice to Mariners 729/2017

CAUTIONARY AREA AND PETROLEUM
SAFETY ZONE

Mariners are advised to exercise caution and allow an adequate safe distance when navigating in close proximity to offshore oil and gas structures. Within the Cautionary Area a Petroleum Safety Zone extends for a radius of 500 metres around offshore structures into which entry is prohibited to all unauthorised vessels. For details see Seafarers Handbook for Australian Waters AHP 20.

Note for chart Aus 741

To accompany Australian Notice to Mariners 729/2017

CAUTIONARY AREA AND PETROLEUM
SAFETY ZONE

Mariners are advised to exercise caution and allow an adequate safe distance when navigating in close proximity to offshore oil and gas structures. Within the Cautionary Area a Petroleum Safety Zone extends for a radius of 500 metres around offshore structures into which entry is prohibited to all unauthorised vessels. For details see Seafarers Handbook for Australian Waters AHP 20.

Note for chart Aus 743

To accompany Australian Notice to Mariners 740/2017

CAUTIONARY AREA AND PETROLEUM
SAFETY ZONE

Mariners are advised to exercise caution and allow an adequate safe distance when navigating in close proximity to offshore oil and gas structures. Within the Cautionary Area a Petroleum Safety Zone extends for a radius of 500 metres around offshore structures into which entry is prohibited to all unauthorised vessels. For details see Seafarers Handbook for Australian Waters AHP 20.

Note for chart Aus 349

To accompany Australian Notice to Mariners 729/2017

CAUTIONARY AREA AND PETROLEUM
SAFETY ZONE

Mariners are advised to exercise caution and allow an adequate safe distance when navigating in close proximity to offshore oil and gas structures. Within the Cautionary Area a Petroleum Safety Zone extends for a radius of 500 metres around offshore structures into which entry is prohibited to all unauthorised vessels. For details see Seafarers Handbook for Australian Waters AHP 20.

Note for chart Aus 329

To accompany Australian Notice to Mariners 729/2017

CAUTIONARY AREA AND PETROLEUM
SAFETY ZONE

Mariners are advised to exercise caution and allow an adequate safe distance when navigating in close proximity to offshore oil and gas structures. Within the Cautionary Area a Petroleum Safety Zone extends for a radius of 500 metres around offshore structures into which entry is prohibited to all unauthorised vessels. For details see Seafarers Handbook for Australian Waters AHP 20.

Note for chart Aus 742

To accompany Australian Notice to Mariners 729/2017

CAUTIONARY AREA AND PETROLEUM
SAFETY ZONE

Mariners are advised to exercise caution and allow an adequate safe distance when navigating in close proximity to offshore oil and gas structures. Within the Cautionary Area a Petroleum Safety Zone extends for a radius of 500 metres around offshore structures into which entry is prohibited to all unauthorised vessels. For details see Seafarers Handbook for Australian Waters AHP 20.

Note for chart Aus 744

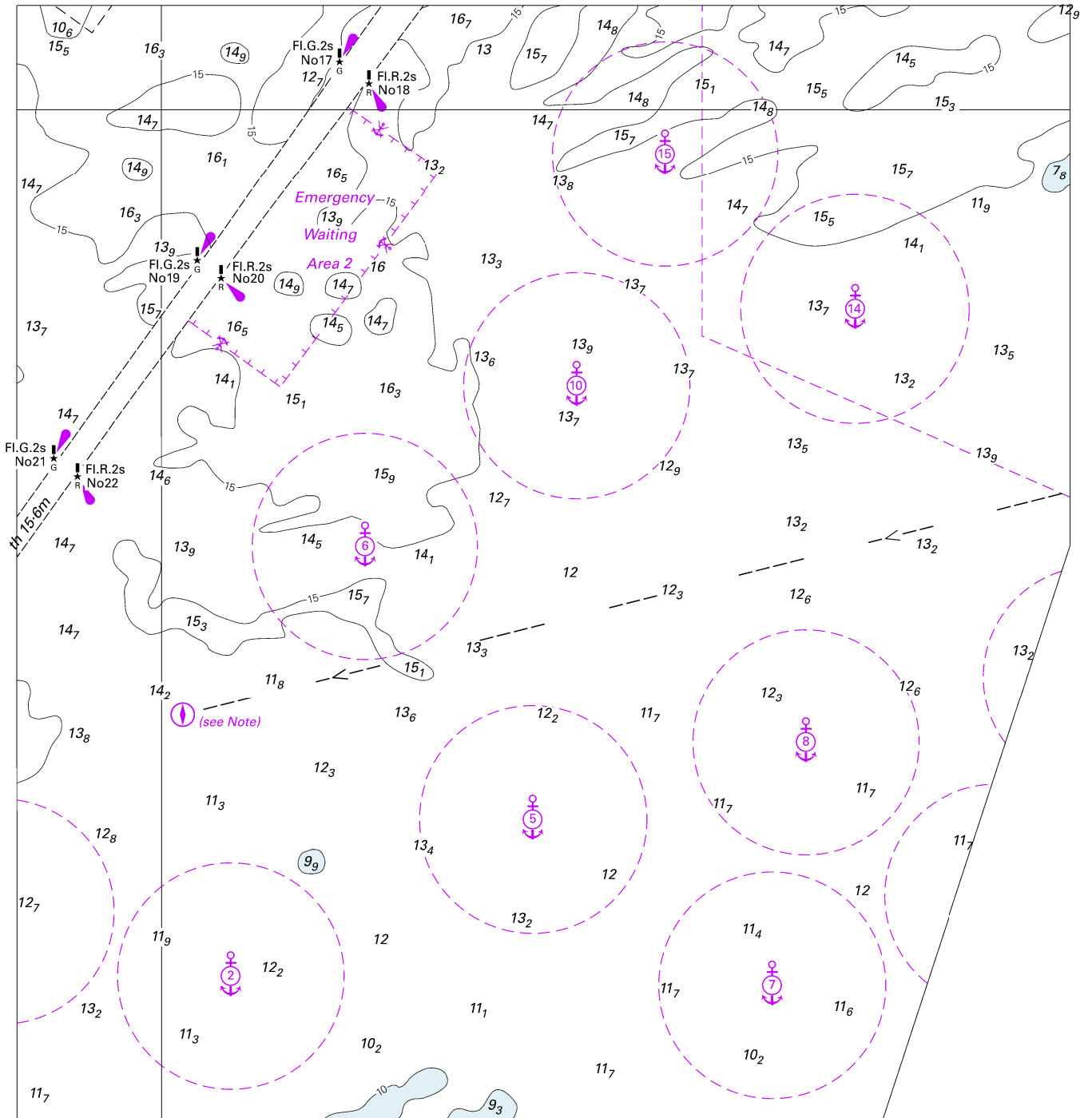
To accompany Australian Notice to Mariners 740/2017

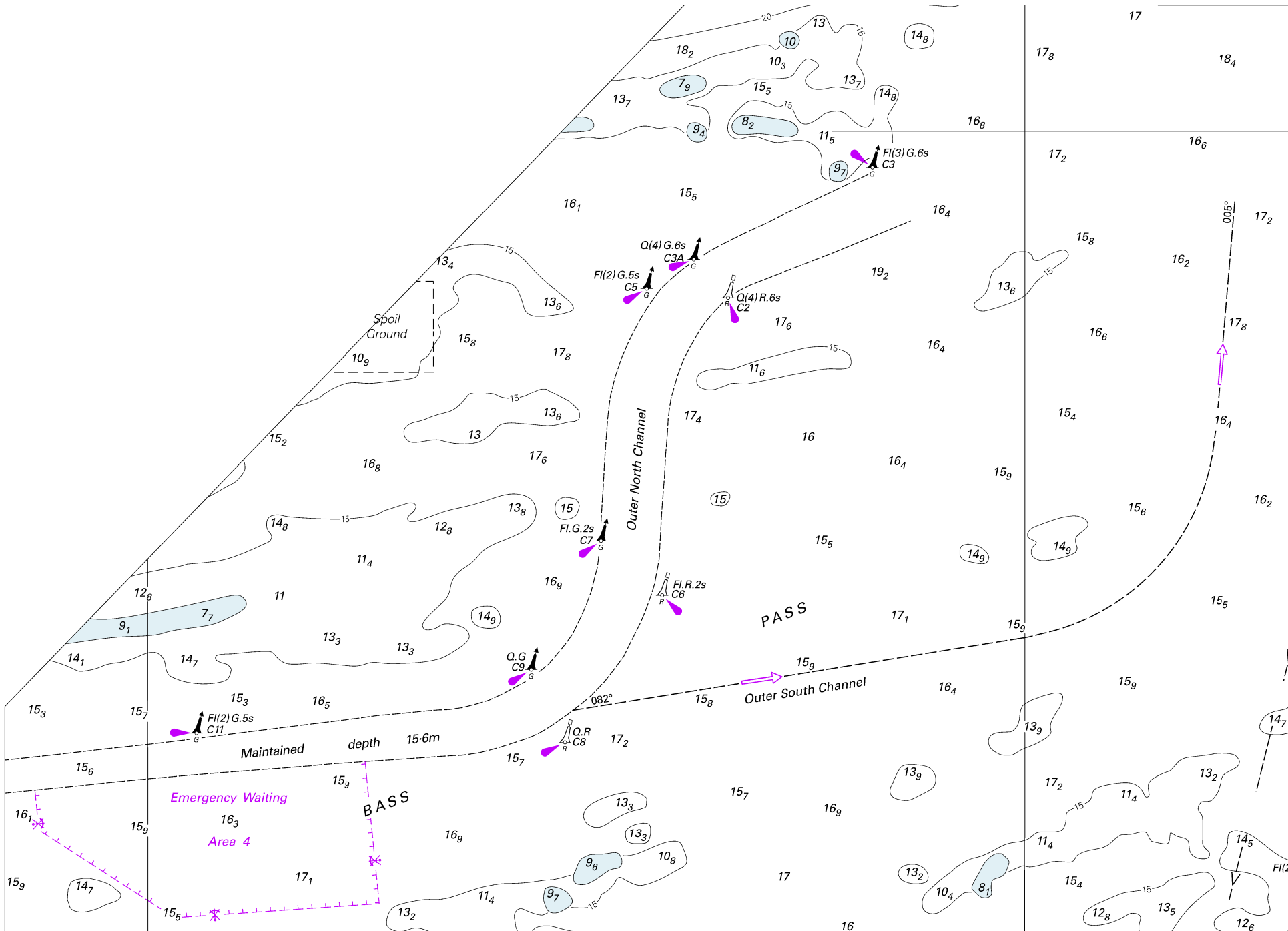
CAUTIONARY AREA AND PETROLEUM
SAFETY ZONE

Mariners are advised to exercise caution and allow an adequate safe distance when navigating in close proximity to offshore oil and gas structures. Within the Cautionary Area a Petroleum Safety Zone extends for a radius of 500 metres around offshore structures into which entry is prohibited to all unauthorised vessels. For details see Seafarers Handbook for Australian Waters AHP 20.

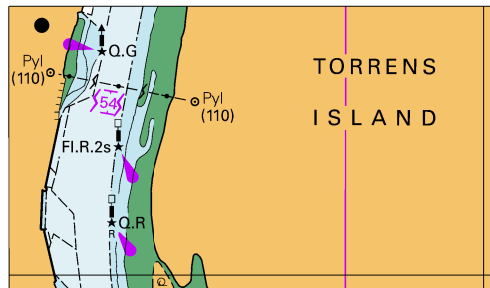
Note for chart Aus 787

To accompany Australian Notice to Mariners 734/2017



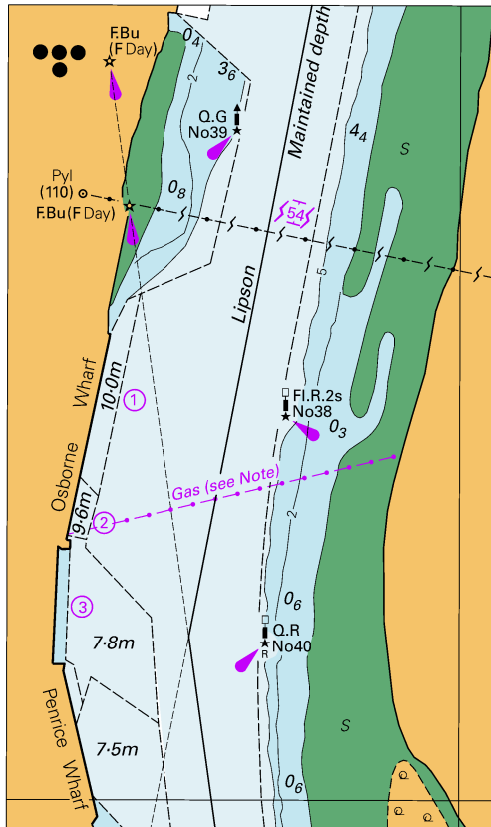


To accompany Australian Notice to Mariners 737/2017



© Commonwealth of Australia 2017
Block for Chart Aus 130 (64.5 x 37.3mm)

To accompany Australian Notice to Mariners 737/2017



© Commonwealth of Australia 2017
Block for Chart Aus 137 (64.7 x 109.0mm)