



25 August 2017

Edition 17

AUSTRALIAN NOTICES TO MARINERS

Notices 685 - 716

Published fortnightly by the Australian Hydrographic Service



Australian Notices to Mariners are the authority for correcting charts and publications published by the Australian Hydrographic Service covering Australia, Papua New Guinea, Solomon Islands, Australian Antarctic Territory and Timor-Leste.

Commodore B.K. BRACE RAN
Hydrographer of Australia

SECTIONS.

- I. **Australian Notices to Mariners, including blocks and notes.**
- II. **Hydrographic Reports.**
- III. **Navigational Warnings.**

SUPPLEMENTS.

- I. **Tracings**
- II. **Cumulative List of Australian Notices to Mariners.**
- III. **Cumulative List of Temporary and Preliminary Australian Notices to Mariners.**
- IV. **Temporary and Preliminary Notices in force.**
- V. **Amendments to Admiralty List of Lights and Fog Signals (Vol K), Radio Signals (NP 281(2), 282, 283(2), 285, 286(4)) and Sailing Directions (NP 9, 13, 14, 15, 33, 34, 35, 36, 39, 44, 51, 60, 61, 62, 100, 136).**

© Commonwealth of Australia 2017

This work is copyright. Apart from any use permitted under the Copyright Act 1968, no part may be reproduced by any process, adapted, communicated or commercially exploited without prior written permission from The Commonwealth represented by the Australian Hydrographic Service.

IMPORTANT NOTICE

This edition of Notices to Mariners includes all significant information affecting AHS products which the AHS has become aware of since the last edition. All reasonable efforts have been made to ensure the accuracy and completeness of the information, including third party information, on which these updates are based. The AHS regards third parties from which it receives information as reliable, however the AHS cannot verify all such information and errors may therefore exist. The AHS does not accept liability for errors in third party information.

GENERAL INSTRUCTIONS

The substance of these notices should be inserted on the charts affected.

Bearings are referred to the true compass and are reckoned clockwise from North; those relating to lights are given as seen by an observer from seaward.

Positions quoted in notices relate to WGS84 which is the horizontal datum for all charts produced by the Australian Hydrographic Service.

The range quoted for a light is its nominal range.

Depths are with reference to the chart datum of each chart. Heights are above mean high water springs or mean higher high water, as appropriate.

The capital letter (P) or (T) after the number of any notice denotes a preliminary or temporary notice respectively, which are contained separately at the end of the permanent notices.

REPORTING OF DANGERS

Mariners are particularly requested to notify the AUSTRALIAN HYDROGRAPHIC SERVICE, Locked Bag 8801 Wollongong, NSW 2500 (Fax 02-4223 6599, e-mail datacentre@hydro.gov.au or, alternatively by filling in and submitting the [Hydrographic Notes](#) forms located on the web site – www.hydro.gov.au), immediately on the discovery of new dangers or suspected dangers to navigation. For changes or defects in aids to navigation notify AusSAR (Fax 02-6230 6868 or email rccaus@amsa.gov.au).

AUTHORISED USE

Copies of Australian notices are available free of charge from the Australian Hydrographic Service (AHS) website (www.hydro.gov.au) and through the eNotices (email) service (www.hydro.gov.au/enotices/enotices.htm).

Individual Notices may be copied for the purpose of inserting Notice substance on official charts and publications. Paper copies may be printed by chart agents and distributed to customers on a cost recovery basis. Participating chart agents are listed on the AHS website as providing a 'Paper Notices to Mariners' service (www.hydro.gov.au/webapps/jsp/agents/agents-list.jsp). Copies of the notices may not be sold for profit without prior written agreement.

NUMERICAL INDEX OF NOTICES TO MARINERS

Edition No 17

Notices	Aus Chart, INT Chart, ENC Cell, AHP, BA Pubs
685	SLB 1001, 1002
686	Aus 253
687	Aus 244, 245, 271
688	Aus 262, 263, 264
689	Aus 235, 236, 814, 815
690	Aus 244, 245, 271
691	Aus 230
692	Aus 230
693	Aus 827, 828
694	Aus 247
695	Aus 4, 301, 701
696	Aus 4708, INT 708
697	Aus 37, 729, 730
698	Aus 319, 320
699	Aus 117
700	Aus 753
701	Aus 64
702	Aus 130
703	Aus 130, 138
704	Aus 152
705	Aus 179
706(T)	Aus 200, 202
707(T)	Aus 242
708(T)	Aus 270
709(T)	Aus 247
710(T)	Aus 250
711(T)	Aus 235
712(T)	Aus 319, 320, 322, 4721, 4722, INT 721, 722
713(T)	Aus 52, 53, 739, 740
714(T)	Aus 63, 64, 328, 743, 4723, 4725, INT 723, 725
715(T)	Aus 64, 328, 743, 744, 4723, 4725, INT 723, 725
716(T)	Aus 143

NUMERICAL INDEX OF CHARTS AFFECTED

Edition No 17

Aus Chart	Notices	INT Chart	Notices
Aus 4	695	INT 708	696
Aus 37	697	INT 721	712(T)
Aus 52	713(T)	INT 722	712(T)
Aus 53	713(T)	INT 723	714(T), 715(T)
Aus 63	714(T)	INT 725	714(T), 715(T)
Aus 64	701, 714(T), 715(T)		
Aus 117	699		
Aus 130	702, 703		
Aus 138	703		
Aus 143	716(T)		
Aus 152	704		
Aus 179	705		
Aus 200	706(T)		
Aus 202	706(T)		
Aus 230	691, 692		
Aus 235	689, 711(T)		
Aus 236	689		
Aus 242	707(T)		
Aus 244	687, 690		
Aus 245	687, 690		
Aus 247	694, 709(T)		
Aus 250	710(T)		
Aus 253	686		
Aus 262	688		
Aus 263	688		
Aus 264	688		
Aus 270	708(T)		
Aus 271	687, 690		
Aus 301	695		
Aus 319	698, 712(T)		
Aus 320	698, 712(T)		
Aus 322	712(T)		
Aus 328	714(T), 715(T)		
Aus 701	695		
Aus 729	697		
Aus 730	697		
Aus 739	713(T)		
Aus 740	713(T)		
Aus 743	714(T), 715(T)		
Aus 744	715(T)		
Aus 753	700		
Aus 814	689		
Aus 815	689		
Aus 827	693		
Aus 828	693		
Aus 4708	696		
Aus 4721	712(T)		
Aus 4722	712(T)		
Aus 4723	714(T), 715(T)		
Aus 4725	714(T), 715(T)		
SLB 1001	685		
SLB 1002	685		

685 AUSTRALIA - Products - New Charts, New Editions, Withdrawn Charts

Australian Hydrographic Service

New Charts

<i>Chart</i>	<i>Title and Geographical limits</i>	<i>Scale</i>	<i>Publication Date</i>	<i>Remarks</i>
SLB 1001	Solomon Islands Index of Nautical Charts 2017		25 August 2017	
SLB 1002	Solomon Islands Index of Electronic Navigational Charts 2017		25 August 2017	

New Editions and Withdrawn Charts

<i>Chart</i>	<i>Title</i>	<i>Scale</i>	<i>Publication Date</i>	<i>Remarks</i>
NIL				

Chart permanently withdrawn

Charts listed above as withdrawn no longer meet chart carriage requirements and should be marked as "superseded" and replaced with the new chart/ new edition listed prior to passage through the area covered by the new chart.

When placing orders with a chart agent between notice of forthcoming edition and its publication, mariners should advise whether their order pertains to the current edition or the new edition.

For further details refer to the AHS website at www.hydro.gov.au for new edition and new chart stock arrival information.

686 AUSTRALIA - QUEENSLAND - Airlie Beach - Pigeon Island - Topmark

Maritime Safety Queensland

Aus 253 [544/2017]

Insert	special topmark	20° 15'.853 S	148° 41'.494 E
--------	-----------------	---------------	----------------

687 AUSTRALIA - QUEENSLAND - Auckland Point - Picnic Island - Lights

Maritime Safety Queensland Notice 144/2017

Aus 244 [243/2017]

Amend	light description to Q(F Day) & Fl.Y.2.5s	23° 48'.85 S	151° 14'.85 E
	light description to Iso.2s (F Day) & Fl.Y.2.5s	23° 49'.15 S	151° 15'.60 E

Aus 245 [243/2017]

Amend	light description to Q(F Day) & Fl.Y.2.5s	23° 48'.85 S	151° 14'.85 E
	light description to Iso.2s (F Day) & Fl.Y.2.5s	23° 49'.15 S	151° 15'.60 E

Aus 271 [243/2017]

Amend	light description to Q(F Day) & Fl.Y.2.5s	23° 48'.85 S	151° 14'.85 E
	light description to Iso.2s (F Day) & Fl.Y.2.5s	23° 49'.15 S	151° 15'.60 E

688 AUSTRALIA - QUEENSLAND - Cairns - Depths

Ports North

Aus 262 [865/2016]

Insert	accompanying block	16° 54'.1 S	145° 47'.7 E
--------	--------------------	-------------	--------------

Aus 263 [497/2017]

Insert	accompanying block A	16° 54'.1 S	145° 47'.5 E
	accompanying block B	16° 55'.0 S	145° 47'.1 E
	accompanying block C	16° 56'.4 S	145° 46'.9 E

Aus 264 [497/2017]

Insert	accompanying block	16° 56'.4 S	145° 46'.9 E
--------	--------------------	-------------	--------------

689 AUSTRALIA - QUEENSLAND - Cape Moreton - Light range altered

Maritime Safety Queensland Notice 333/2017

Aus 235 [597/2017]			
Amend	light range to 8M	27° 01'.3 S	153° 27'.3 E
Aus 236 [597/2017]			
Amend	light range to 8M	27° 01'.3 S	153° 27'.3 E
Aus 814 [597/2017]			
Amend	light range to 8M	27° 01'.3 S	153° 27'.3 E
Aus 815 [597/2017]			
Amend	light range to 8M	27° 01'.3 S	153° 27'.3 E

690 AUSTRALIA - QUEENSLAND - Gladstone - Clinton Wharves - Virtual AIS; light buoys

Maritime Safety Queensland Notice 177/2017

Aus 244 [687/2017]			
Insert	accompanying block	23° 49'.3 S	151° 14'.8 E
Aus 245 [687/2017]			
Delete	light buoy	23° 49'.67 S	151° 15'.06 E
	light buoy	23° 49'.57 S	151° 14'.90 E
Aus 271 [687/2017]			
Insert	accompanying block	23° 49'.3 S	151° 14'.8 E

691 AUSTRALIA - QUEENSLAND - Gold Coast - Nerang River - Nav aids

Maritime Safety Queensland

Aus 230 [446/2017]			
Amend	light description to <i>Fl.R.4-3s</i>	27° 58'.46 S	153° 25'.41 E
Delete	beacon	27° 58'.52 S	153° 25'.26 E
	beacon	27° 58'.69 S	153° 25'.33 E
	beacon	27° 58'.44 S	153° 25'.28 E
	beacon	27° 58'.88 S	153° 25'.34 E
	beacon	27° 59'.25 S	153° 25'.25 E
	beacon	27° 59'.26 S	153° 25'.32 E
	beacon	27° 59'.22 S	153° 25'.35 E
	notice board	27° 58'.73 S	153° 25'.09 E
	beacon	27° 58'.91 S	153° 25'.31 E

692 AUSTRALIA - QUEENSLAND - Gold Coast - Light buoy moved

Maritime Safety Queensland Notice 333/2017

Aus 230 [691/2017]			
Move	light buoy	27° 57'.84 S	153° 26'.49 E
	to	27° 57'.876 S	153° 26'.500 E

693 AUSTRALIA - QUEENSLAND - Great Palm Island - Light

Maritime Safety Queensland , Australian Hydrographic Service

Aus 827 [640/2017]			
Amend	light to <i>Dir Oc.3s & F.RG</i>	18° 44'.1 S	146° 34'.6 E
Aus 828 [639/2017]			
Amend	light to <i>Dir Oc.3s & F.RG</i>	18° 44'.1 S	146° 34'.6 E

694 AUSTRALIA - QUEENSLAND - Rosslyn Bay - Nav aids

Maritime Safety Queensland

Aus 247 (plan, Rosslyn Bay) [244/2017]Insert light, *Fl.G.4s* 23° 09'.560 S 150° 47'.248 E

Delete light beacon 23° 09'.55 S 150° 47'.26 E

695 AUSTRALIA - QUEENSLAND - Weipa - Albatross Bay - Depth

North Queensland Bulk Ports Corporation

Aus 4 [642/2017]Delete depth, 9₅m, and enclosing contour 12° 40'.3 S 141° 39'.3 E**Aus 301 [281/2017]**Delete depth, 9₅m 12° 40'.4 S 141° 39'.2 E**Aus 701 [1221/2014]**Delete depth, 9₅m, and enclosing contour 12° 40'.3 S 141° 39'.3 E**696 INDONESIA - Java Sea - Bawean - Wrecks**

UKHO Notice 33/3757/2017

Aus 4708 (INT 708) [323/2017]Insert dangerous wreck 06° 01'.8 S 112° 02'.1 E
dangerous wreck 6° 28'.6 S 112° 03'.3 E**697 AUSTRALIA - WESTERN AUSTRALIA - Augereau Island - Rock**

Department of Fisheries WA

Aus 37 [7/2017]Insert rock awash enclosed by danger circle, with legend *Rep (2017)* 14° 45'.58 S 125° 05'.81 E**Aus 729 [1178/2016]**Insert rock awash enclosed by danger circle, with legend *Rep (2017)* 14° 45'.58 S 125° 05'.81 E**Aus 730 [7/2017]**Insert rock awash enclosed by danger circle, with legend *Rep (2017)* 14° 45'.58 S 125° 05'.81 E**698 AUSTRALIA - WESTERN AUSTRALIA - Browse Island - FPSO northwestwards; chart note**

INPEX , Australian Hydrographic Service

Aus 319 [505/2017]Insert lit moored storage tanker, *Ichthys Venturer Mo(U)15s 15M*, and magenta circle, with legend *Racon (D)* 13° 57'.91 S 123° 18'.89 E

Replace accompanying note 13° 20'.7 S 123° 22'.2 E

Aus 320 [505/2017]Insert lit moored storage tanker, *Ichthys Venturer Mo(U)15s 15M*, and magenta circle, with legend *Racon (D)* 13° 57'.91 S 123° 18'.89 E
accompanying note 15° 38'.5 S 124° 33'.0 E**699 AUSTRALIA - WESTERN AUSTRALIA - Fremantle - Success Channel - Topmark**

Fremantle Ports

Aus 117 [649/2017]

Insert port lateral topmark 32° 05'.743 S 115° 41'.759 E

700 AUSTRALIA - WESTERN AUSTRALIA - Green Head - Lights; navline
Department of Transport WA

Aus 753 [363/2017]

Amend	light description to <i>Iso.4s 26m & Q.19m 10M</i>	30° 04'.4 S	114° 58'.0 E
Move	legend, 007.2° to	30° 04'.8 S 30° 04'.06 S	114° 57'.2 E 114° 57'.46 E
Delete	continuous line, between	30° 04'.3 S 30° 05'.0 S	114° 57'.3 E 114° 57'.2 E

701 AUSTRALIA - WESTERN AUSTRALIA - Saladin Shoal - Light buoy repositioned
Pilbara Ports Authority

Aus 64 [607/2017]

Move	light buoy to	21° 32'.51 S 21° 32'.46 S	115° 01'.92 E 115° 01'.97 E
------	------------------	------------------------------	--------------------------------

702 AUSTRALIA - SOUTH AUSTRALIA - Barker Inlet - Beacons
Department of Planning, Transport and Infrastructure SA

Aus 130 [653/2017]

Insert	beacon with starboard lateral topmark	34° 47'.659 S	138° 32'.744 E
Delete	beacon	34° 47'.59 S	138° 32'.71 E
	beacon	34° 47'.83 S	138° 32'.91 E
	beacon	34° 48'.23 S	138° 32'.93 E
	structure colour, R	34° 47'.75 S	138° 32'.82 E
	structure colour, R	34° 47'.99 S	138° 32'.88 E
	structure colour, R	34° 48'.30 S	138° 32'.83 E
	structure colour, R	34° 48'.33 S	138° 32'.68 E
	structure colour, G	34° 47'.90 S	138° 32'.92 E
	structure colour, G	34° 47'.81 S	138° 32'.87 E
	structure colour, G	34° 48'.10 S	138° 32'.88 E
	structure colour, G	34° 48'.23 S	138° 32'.88 E
	structure colour, G	34° 48'.29 S	138° 32'.77 E
	structure colour, G	34° 48'.31 S	138° 32'.53 E
	structure colour, G	34° 48'.26 S	138° 32'.45 E
	structure colour, G	34° 48'.18 S	138° 32'.41 E

703 AUSTRALIA - SOUTH AUSTRALIA - Semaphore Anchorage - Light buoy withdrawn
Department of Planning, Transport and Infrastructure SA

Aus 130 [702/2017]

Delete	light buoy	34° 49'.29 S	138° 25'.07 E
--------	------------	--------------	---------------

Aus 138 [653/2017]

Delete	light buoy	34° 49'.29 S	138° 25'.07 E
--------	------------	--------------	---------------

704 AUSTRALIA - VICTORIA - Western Port - Hanns Inlet - Nav aids
Aurecon , HMAS Cerberus

Aus 152 (plan, Hanns Inlet) [512/2017]

Insert	accompanying block A	38° 23'.0 S	145° 13'.4 E
	accompanying block B	38° 22'.5 S	145° 12'.0 E

705 AUSTRALIA - TASMANIA - Lady Barron Island - Store Point - Light
Maritime and Safety Tasmania Notice M103/17

Aus 179 (plan, Approaches to Lady Barron) [63/2017]

Insert	light, <i>Fl.Bu.5s</i>	40° 12'.894 S	148° 14'.614 E
--------	------------------------	---------------	----------------

706(T)/2017 AUSTRALIA - NEW SOUTH WALES - Port Jackson - Seafourth Bluff to Manns Point - Scientific instruments

Port Authority of New South Wales 16/2017

Subsurface scientific instruments marked by special light buoys, Q.Y, exist in the following positions:

33° 50'.62 S 151° 11'.20 E

33° 50'.50 S 151° 11'.42 E

33° 48'.23 S 151° 14'.59 E

33° 48'.28 S 151° 14'.14 E

Chart temporarily affected - Aus 200 - Aus 202

707(T)/2017 AUSTRALIA - QUEENSLAND - Bundaberg - Burnett River - Anchoring prohibited

Maritime Safety Queensland 328(T)/2017

Anchoring is prohibited for private vessels in an area bounded by the following positions:

24° 45'.58 S 152° 23'.26 E

24° 45'.61 S 152° 23'.31 E

24° 45'.56 S 152° 23'.36 E

24° 45'.51 S 152° 23'.36 E

Chart temporarily affected - Aus 242

708(T)/2017 AUSTRALIA - QUEENSLAND - Cape Flattery - Shoaling

Maritime Safety Queensland

Latest survey shows shoaler depths than those charted may exist in the vicinity of position 14° 58'.95 S 145° 21'.32 E.

Charts will be updated in due course.

Chart temporarily affected - Aus 270

709(T)/2017 AUSTRALIA - QUEENSLAND - Great Keppel Island - Charted

Former Notice - 769(T)/2016 is cancelled

Maritime Safety Queensland

Light buoys are now permanent, however they will only be charted on ENC due to scale.

Cancel this notice on receipt.

Chart formerly affected - Aus 247

710(T)/2017 AUSTRALIA - QUEENSLAND - Hay Point - Obstruction removed

Former Notice - 568(T)/2017 is cancelled

Maritime Safety Queensland Notice 276(T)/2017

Cancel this notice on receipt.

Chart formerly affected - Aus 250

711(T)/2017 AUSTRALIA - QUEENSLAND - Mooloolaba - Shoaling removed; dredging operations completed

Former Notice - 420(T)/2017 is cancelled

Maritime Safety Queensland

Cancel this notice on receipt.

Chart formerly affected - Aus 235

712(T)/2017 AUSTRALIA - WESTERN AUSTRALIA - Browse Island - FPSO northwestwards charted
Former Notice - 621(T)/2017 is cancelled
 INPEX

Cancel this notice on receipt.

Chart formerly affected - Aus 319 - Aus 320 - Aus 322 - Aus 4721 (INT 721) - Aus 4722 (INT 722)

713(T)/2017 AUSTRALIA - WESTERN AUSTRALIA - Port Hedland - Dredging
 Pilbara Ports Authority

Dredging operations are in progress in an area west of the entrance channel between No15 light beacon (20° 10'.41 S 118° 30'.49 E) and C3 light beacon (20°02'.26 118° 24'.90)

Spoil will be deposited in the vicinity of the following positions:

20° 12'.60 S 118° 28'.10 E

19° 58'.12 S 118° 24'.53 E.

Mariners are advised to navigate with caution in the area.

Chart temporarily affected - Aus 52 - Aus 53 - Aus 739 - Aus 740

714(T)/2017 AUSTRALIA - WESTERN AUSTRALIA - Taunton Reef - Platform relit
Former Notice - 393(T)/2017 is cancelled
 Quadrant Energy

Cancel this notice on receipt.

Chart formerly affected - Aus 63 - Aus 64 - Aus 328 - Aus 743 - Aus 4723 (INT 723) - Aus 4725 (INT 725)

715(T)/2017 AUSTRALIA - WESTERN AUSTRALIA - Thevenard Island - Platform relit southwards
Former Notice - 633(T)/2017 is cancelled
 Pilbara Ports Authority

Cancel this notice on receipt.

Chart formerly affected - Aus 64 - Aus 328 - Aus 743 - Aus 744 - Aus 4723 (INT 723) - Aus 4725 (INT 725)

716(T)/2017 AUSTRALIA - VICTORIA - Port Phillip - Patterson River - Light beacon relit
Former Notice - 674(T)/2017 is cancelled
 Parks Victoria Notice 210/2017

Cancel this notice on receipt.

Chart formerly affected - Aus 143

II

HYDROGRAPHIC REPORTS

NIL

III

NAVIGATION WARNINGS

The Australian Hydrographic Service will no longer compile Section III of the Australian Notices to Mariners. For the most up to date navigation warnings please refer to:

AMSA Navigation Warnings

<http://amsa.gov.au/search-and-rescue/distress-and-safety-comms/msi/msi-email/index.asp>

New Zealand Notices to Mariners (Navarea XIV warnings)

<http://www.linz.govt.nz/sea/maritime-safety/notices-mariners>

To accompany Australian Notice to Mariners 698/2017

CAUTIONARY AREA AND PETROLEUM
SAFETY ZONE

Mariners are advised to exercise caution and allow an adequate safe distance when navigating in close proximity to offshore oil and gas structures. Within the Cautionary Area a Petroleum Safety Zone extends for a radius of 500 metres around offshore structures into which entry is prohibited to all unauthorised vessels. For details see Seafarers Handbook for Australian Waters AHP 20.

Note for chart Aus 319

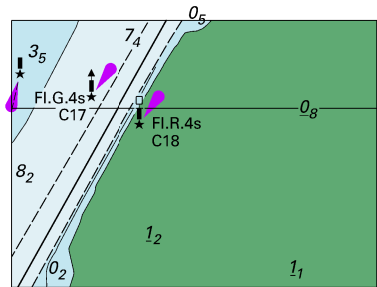
To accompany Australian Notice to Mariners 698/2017

CAUTIONARY AREA AND PETROLEUM
SAFETY ZONE

Mariners are advised to exercise caution and allow an adequate safe distance when navigating in close proximity to offshore oil and gas structures. Within the Cautionary Area a Petroleum Safety Zone extends for a radius of 500 metres around offshore structures into which entry is prohibited to all unauthorised vessels. For details see Seafarers Handbook for Australian Waters AHP 20.

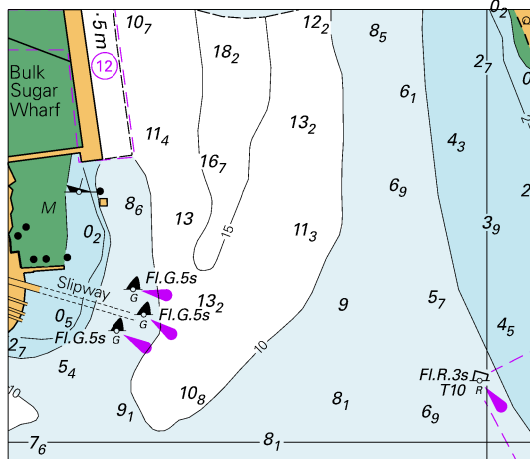
Note for chart Aus 320

To accompany Australian Notice to Mariners 688/2017



© Commonwealth of Australia 2017
Block for Chart Aus 262 (49.2 x 35.2mm)

To accompany Australian Notice to Mariners 688/2017

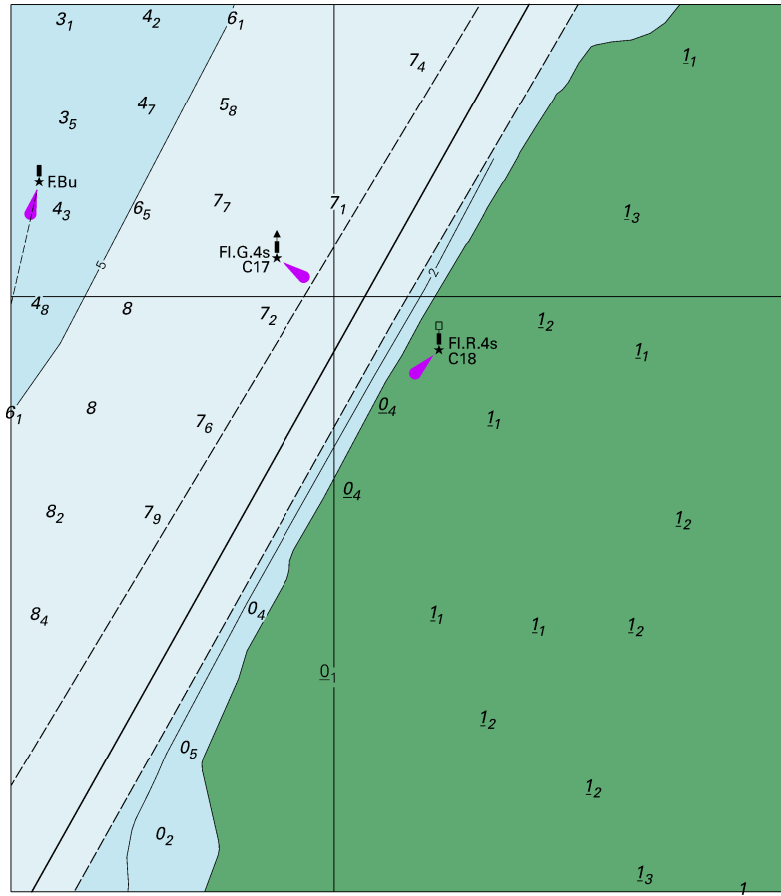


© Commonwealth of Australia 2017

Block C for Chart Aus 263

(69.7 x 59.5mm)

To accompany Australian Notice to Mariners 688/2017

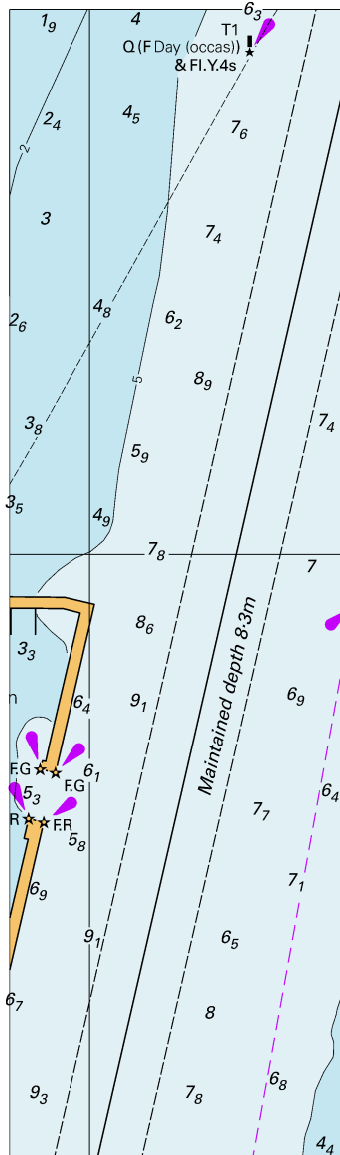


© Commonwealth of Australia 2017

Block A for Chart Aus 263

(102.8 x 117.4mm)

To accompany Australian Notice to Mariners 688/2017

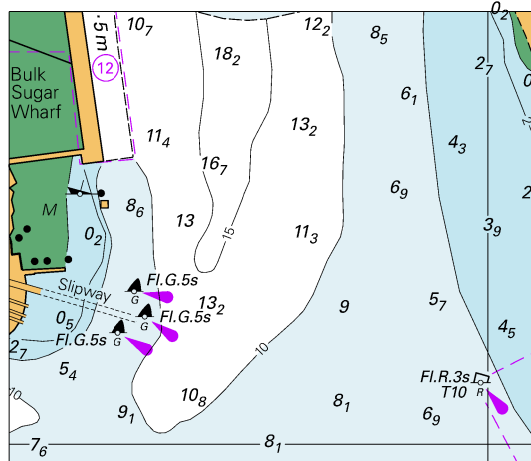


© Commonwealth of Australia 2017

Block B for Chart Aus 263

(44.4 x 151.9mm)

To accompany Australian Notice to Mariners 688/2017

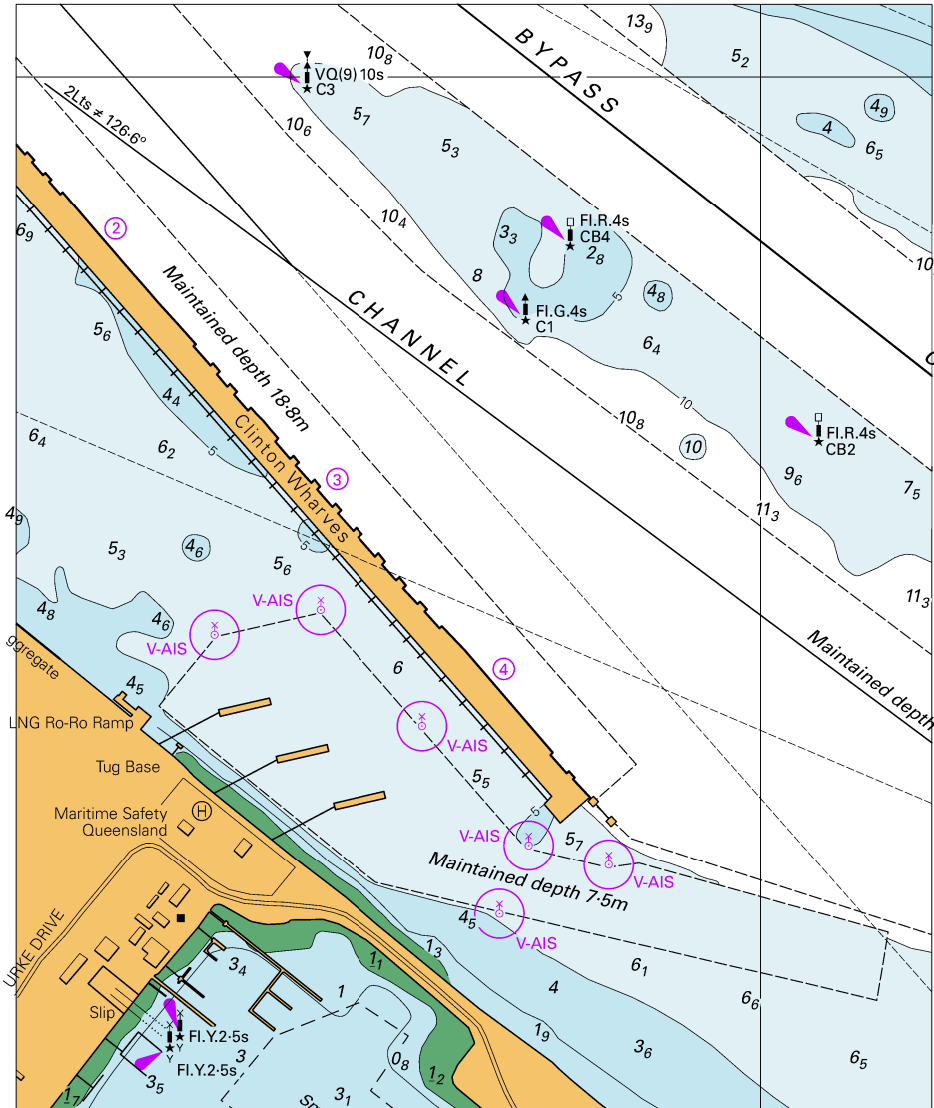


© Commonwealth of Australia 2017

Block for Chart Aus 264

(69.7 x 59.5mm)

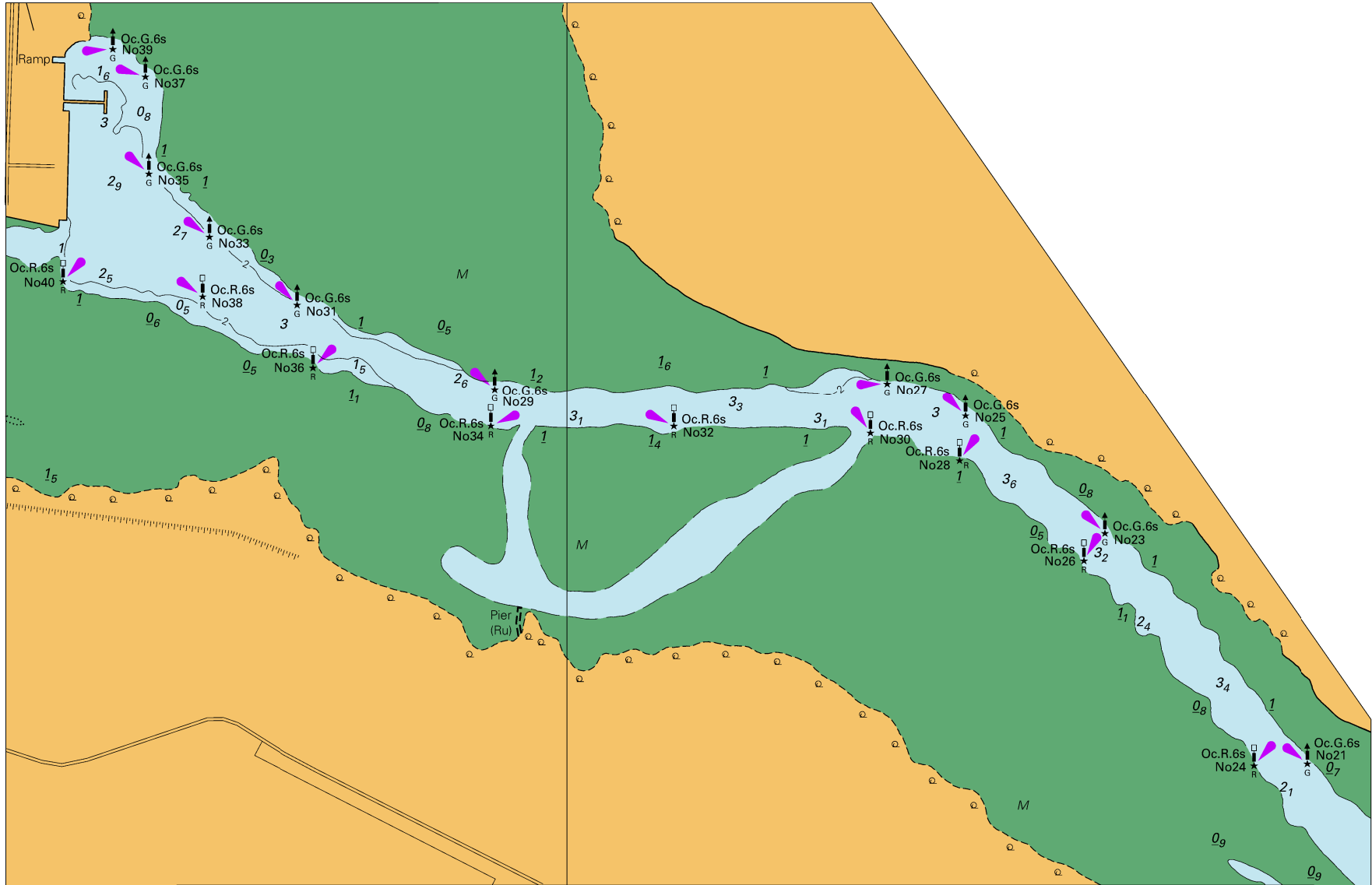
To accompany Australian Notice to Mariners 690/2017



Block for Chart Aus 271

© Commonwealth of Australia 2017

(121.1 x 146.1mm)



Block B for Chart Aus 152

To accompany Australian Notice to Mariners 704/2017

