




Australian Notices to Mariners are the authority for correcting Australian Charts and Publications

AUSTRALIAN NOTICES TO MARINERS

Notices 589 - 634

Published fortnightly by the Australian Hydrographic Service


Commodore B.K. BRACE RAN
Hydrographer of Australia

SECTIONS.

- I. **Australian Notices to Mariners, including blocks and notes.**
- II. **Hydrographic Reports.**
- III. **Navigational Warnings.**

SUPPLEMENTS.

- I. **Tracings**
- II. **Cumulative List of Australian Notices to Mariners.**
- III. **Cumulative List of Temporary and Preliminary Australian Notices to Mariners.**
- IV. **Temporary and Preliminary Notices in force.**
- V. **Amendments to Admiralty List of Lights and Fog Signals (Vol K), Radio Signals (NP 281(2), 282, 283(2), 285, 286(4)) and Sailing Directions (NP 9, 13, 14, 15, 33, 34, 35, 36, 39, 44, 51, 60, 61, 62, 100, 136).**

© Commonwealth of Australia 2017

This work is copyright. Apart from any use permitted under the Copyright Act 1968, no part may be reproduced by any process, adapted, communicated or commercially exploited without prior written permission from The Commonwealth represented by the Australian Hydrographic Service.

IMPORTANT NOTICE

This edition of Notices to Mariners includes all significant information affecting AHS products which the AHS has become aware of since the last edition. All reasonable efforts have been made to ensure the accuracy and completeness of the information, including third party information, on which these updates are based. The AHS regards third parties from which it receives information as reliable, however the AHS cannot verify all such information and errors may therefore exist. The AHS does not accept liability for errors in third party information.

GENERAL INSTRUCTIONS

The substance of these notices should be inserted on the charts affected.

Bearings are referred to the true compass and are reckoned clockwise from North; those relating to lights are given as seen by an observer from seaward.

Positions quoted in notices relate to WGS84 which is the horizontal datum for all charts produced by the Australian Hydrographic Service.

The range quoted for a light is its nominal range.

Depths are with reference to the chart datum of each chart. Heights are above mean high water springs or mean higher high water, as appropriate.

The capital letter (P) or (T) after the number of any notice denotes a preliminary or temporary notice respectively, which are contained separately at the end of the permanent notices.

A star (*) adjacent to the number of a notice indicates that the notice is based on original information.

REPORTING OF DANGERS

Mariners are particularly requested to notify the AUSTRALIAN HYDROGRAPHIC SERVICE, Locked Bag 8801 Wollongong, NSW 2500 (Fax 02-4223 6599, e-mail datacentre@hydro.gov.au or, alternatively by filling in and submitting the [Hydrographic Notes](#) forms located on the web site – www.hydro.gov.au), immediately on the discovery of new dangers or suspected dangers to navigation. For changes or defects in aids to navigation notify AusSAR (Fax 02-6230 6868 or email rccaus@amsa.gov.au).

AUTHORISED USE

Copies of Australian notices are available free of charge from the Australian Hydrographic Service (AHS) website (www.hydro.gov.au) and through the eNotices (email) service (www.hydro.gov.au/enotices/enotices.htm).

Individual Notices may be copied for the purpose of inserting Notice substance on official charts and publications. Paper copies may be printed by chart agents and distributed to customers on a cost recovery basis. Participating chart agents are listed on the AHS website as providing a 'Paper Notices to Mariners' service (www.hydro.gov.au/webapps/jsp/agents/agents-list.jsp). Copies of the notices may not be sold for profit without prior written agreement.

NUMERICAL INDEX OF NOTICES TO MARINERS

Edition No 15

Notices	Aus Chart, INT Chart, ENC Cell, AHP, BA Pubs
589	Aus 32, 222, 5000, 5001, SLB 101, 102, 103, 104, 105, 106, 107, 201, 202, 301, 302, 303, 304, 305, 1001, 1002
590	Aus 51
591	Amendment to Seafarers Handbook for Australian Waters AHP20
592	Aus 811
593	Aus 201, 202
594	Aus 4602, INT 602
595	Aus 4060, 4602, 4604, INT 60, 602, 604
596	Aus 268, 825
597	Aus 235, 236, 814, 815
598	Aus 519, 520, 644, 4620, 4621, INT 620, 621
599	Aus 841
600	Aus 20, 722
601	Aus 312, 315, 4721, INT 721
602	Aus 64, 69
603	Aus 50
604	Aus 72
605	Aus 328, 329, 4723, 4725, INT 723, 725
606	Aus 110
607	Aus 63, 64, 69, 328, 743
608	Aus 485, 781
609	Aus 150
610(T)	Aus 197, 489, 808, 4060, 4601, 4602, 4604, 4643, INT 60, 601, 602, 604, 643
611(T)	Aus 238
612(T)	Aus 833, 4620, INT 620
613(T)	Aus 250
614(T)	Aus 269
615(T)	Aus 829, 830
616(T)	Aus 260, 261, 367, 822
617(T)	Aus 293, 299
618(T)	Aus 310, 4721, INT 721
619(T)	Aus 328, 744, 4723, 4725, INT 723, 725
620(T)	Aus 24, 25, 26, 27, 28, 29, 309, 311, 312, 315, 316, 722, 4721, INT 721
621(T)	Aus 319, 320, 322, 4721, 4722, INT 721, 722
622(T)	Aus 319, 320, 4721, 4722, INT 721, 722
623(T)	Aus 319, 320, 4721, 4722, INT 721, 722
624(T)	Aus 319, 320
625(T)	Aus 72
626(T)	Aus 81
627(T)	Aus 319, 320, 4721, 4722, INT 721, 722
628(T)	Aus 52, 53, 54
629(T)	Aus 55, 57, 326, 327, 740, 741
630(T)	Aus 327
631(T)	Aus 754
632(T)	Aus 64, 328, 743, 744, 4723, 4725, INT 723, 725
633(T)	Aus 64, 328, 743, 744, 4723, 4725, INT 723, 725
634(T)	Aus 182

NUMERICAL INDEX OF CHARTS AFFECTED

Edition No 15

Aus Chart	Notices	Aus Chart	Notices
Aus 20	600	Aus 520	598
Aus 24	620(T)	Aus 644	598
Aus 25	620(T)	Aus 722	600, 620(T)
Aus 26	620(T)	Aus 740	629(T)
Aus 27	620(T)	Aus 741	629(T)
Aus 28	620(T)	Aus 743	607, 632(T), 633(T)
Aus 29	620(T)	Aus 744	619(T), 632(T), 633(T)
Aus 32	589	Aus 754	631(T)
Aus 50	603	Aus 781	608
Aus 51	590	Aus 808	610(T)
Aus 52	628(T)	Aus 811	592
Aus 53	628(T)	Aus 814	597
Aus 54	628(T)	Aus 815	597
Aus 55	629(T)	Aus 822	616(T)
Aus 57	629(T)	Aus 825	596
Aus 63	607	Aus 829	615(T)
Aus 64	602, 607, 632(T), 633(T)	Aus 830	615(T)
Aus 69	602, 607	Aus 833	612(T)
Aus 72	604, 625(T)	Aus 841	599
Aus 81	626(T)	Aus 4060	595, 610(T)
Aus 110	606	Aus 4601	610(T)
Aus 150	609	Aus 4602	594, 595, 610(T)
Aus 182	634(T)	Aus 4604	595, 610(T)
Aus 197	610(T)	Aus 4620	598, 612(T)
Aus 201	593	Aus 4621	598
Aus 202	593	Aus 4643	610(T)
Aus 222	589	Aus 4721	601, 618(T), 620(T), 621(T), 622(T), 623(T), 627(T)
Aus 235	597	Aus 4722	621(T), 622(T), 623(T), 627(T)
Aus 236	597	Aus 4723	605, 619(T), 632(T), 633(T)
Aus 238	611(T)	Aus 4725	605, 619(T), 632(T), 633(T)
Aus 250	613(T)	Aus 5000	589
Aus 260	616(T)	Aus 5001	589
Aus 261	616(T)	SLB 101	589
Aus 268	596	SLB 102	589
Aus 269	614(T)	SLB 103	589
Aus 293	617(T)	SLB 104	589
Aus 299	617(T)	SLB 105	589
Aus 309	620(T)	SLB 106	589
Aus 310	618(T)	SLB 107	589
Aus 311	620(T)	SLB 201	589
Aus 312	601, 620(T)	SLB 202	589
Aus 315	601, 620(T)	SLB 301	589
Aus 316	620(T)	SLB 302	589
Aus 319	621(T), 622(T), 623(T), 624(T), 627(T)	SLB 303	589
Aus 320	621(T), 622(T), 623(T), 624(T), 627(T)	SLB 304	589
Aus 322	621(T)	SLB 305	589
Aus 326	629(T)	SLB 1001	589
Aus 327	629(T), 630(T)	SLB 1002	589
Aus 328	605, 607, 619(T), 632(T), 633(T)		
Aus 329	605		
Aus 367	616(T)		
Aus 485	608		
Aus 489	610(T)		
Aus 519	598		

INT Chart	Notices
INT 60	595, 610(T)
INT 601	610(T)
INT 602	594, 595, 610(T)
INT 604	595, 610(T)
INT 620	598, 612(T)
INT 621	598
INT 643	610(T)
INT 721	601, 618(T), 620(T), 621(T), 622(T), 623(T), 627(T)
INT 722	621(T), 622(T), 623(T), 627(T)
INT 723	605, 619(T), 632(T), 633(T)
INT 725	605, 619(T), 632(T), 633(T)

589 AUSTRALIA - Products- New Charts and New Editions to be published shortly

Australian Hydrographic Service

New Charts to be published shortly

<i>Chart</i>	<i>Title</i>	<i>Scale</i>	<i>Expected Publication Date</i>	<i>Remarks</i>
SLB 101	South Pacific Ocean - Solomon Islands - Anchorage in Guadalcanal Island Plans: Honiara Lungga Roads Marau Sound	 1:5 000 1:20 000 1:50 000	11 August 2017	Adoption of Solomon Islands charting. Replaces Admiralty Chart 1750.
SLB 102	South Pacific Ocean - Solomon Islands - Plans in the New Georgia Group Plans: Lever Harbour Ringgi Cove Port Noro Gizo Harbour and Approaches Blackett Strait	 1:7 500 1:15 000 1:20 000 1:25 000 1:50 000	11 August 2017	Adoption of Solomon Islands charting. Replaces Admiralty Chart 1735.
SLB 103	South Pacific Ocean - Solomon Islands - Harbours in the Solomon Islands Plans: San Cristobal Island Kirakira Bay New Georgia Island Viru Harbour Florida Islands Tulaghi Harbour San Cristobal Island Star Harbour Rennell Island Lughughu Bay	 1:10 000 1:12 500 1:15 000 1:20 000 1:30 000	11 August 2017	Adoption of Solomon Islands charting. Replaces Admiralty Chart 1766.
SLB 104	South Pacific Ocean - Solomon Islands - Anchorage in the Solomon Islands Plans: Malaita Island Kwakwaru Harbour Malaita Island Auki Harbour Santa Isabel Island Allardyce Harbour Malaita Island Bina Harbour Malaita Island Kwai Harbour to Uru Island Anchorage Santa Isabel Island Maringe Lagoon Santa Isabel Island Thousand Ships Bay	 1:10 000 1:12 500 1:20 000 1:20 000 1:50 000 1:75 000 1:75 000	11 August 2017	Adoption of Solomon Islands charting. Replaces Admiralty Chart 1747.
SLB 105	South Pacific Ocean - Solomon Islands - Russell Islands Plan: Russell Islands Kokolaonohol (Renard) Sound	1:50 000 1:20 000	11 August 2017	Adoption of Solomon Islands charting. Replaces Admiralty Chart 1714.
SLB 106	South Pacific Ocean - Solomon Islands - Bougainville Strait	1:75 000	11 August 2017	Adoption of Solomon Islands charting. Replaces Admiralty Chart 1708.
SLB 107	South Pacific Ocean - Solomon Islands - Plans of the Santa Cruz and Adjacent Islands Plans: Anuta or Cherry Island Ndende Island Graciosa Bay Tikopia Island Utupua Island Basilisk Harbour Vanikolo Island Manieve and Tevai Bays Vanikolo Island Pallu Passage Santa Cruz Islands	 1:25 000 1:50 000 1:50 000 1:50 000 1:50 000 1:50 000 1:500 000	11 August 2017	Adoption of Solomon Islands charting. Replaces Admiralty Chart 17.
SLB 201	South Pacific Ocean - Solomon Islands - Sealark Channel and approaches to Honiara	1:100 000	11 August 2017	Adoption of Solomon Islands charting. Replaces Admiralty Chart 1713.
SLB 202	South Pacific Ocean - Solomon Islands - Manning Strait	1:100 000	11 August 2017	Adoption of Solomon Islands charting. Replaces Admiralty Chart 1709.
SLB 301	South Pacific Ocean - Solomon Islands - Bougainville Island to Ghizo Island	1:300 000	11 August 2017	Adoption of Solomon Islands charting. Replaces Admiralty Chart 3994.
SLB 302	South Pacific Ocean - Solomon Islands - Choiseul Island to New Georgia Island	1:300 000	11 August 2017	Adoption of Solomon Islands charting. Replaces Admiralty Chart 3995.

589 AUSTRALIA - Products- New Charts and New Editions to be published shortly				
SLB 303	South Pacific Ocean - Solomon Islands - Santa Isabel Island to Guadalcanal Island	1:300 000	11 August 2017	Adoption of Solomon Islands charting. Replaces Admiralty Chart 3996.
SLB 304	South Pacific Ocean - Solomon Islands - Indispensable Strait	1:300 000	11 August 2017	Adoption of Solomon Islands charting. Replaces Admiralty Chart 3997.
SLB 305	South Pacific Ocean - Solomon Islands - San Cristobal Island to Malaita Island	1:300 000	11 August 2017	Adoption of Solomon Islands charting. Replaces Admiralty Chart 3998.
Aus 4623	South Pacific Ocean - Solomon Islands - Solomon Islands to Kosrae Island	1:1 500 000	11 August 2017	Adoption of Solomon Islands charting. Replaces Admiralty Chart 4623.
Aus 4634	South Pacific Ocean - Solomon Islands - Frederick Reefs to Solomon Islands	1:1 500 000	11 August 2017	Adoption of Solomon Islands charting. Replaces Admiralty Chart 4634.
SLB 1001	Solomon Islands Index of Nautical Charts 2017		11 August 2017	
SLB 1002	Solomon Islands Index of Electronic Charts 2017		11 August 2017	

New Editions to be published shortly

<i>Chart</i>	<i>Title</i>	<i>Scale</i>	<i>Expected Publication Date</i>	<i>Remarks</i>
Aus 32	Australia - North Coast - Western Australia - Cambridge Gulf Plans: Wyndham Wharf Approaches to Wyndham Wharf	1:75 000 1:7 500 1:37 500	11 August 2017	New edition incorporating new bathymetric data.
Aus 222	Australia - East Coast - New South Wales - Clarence River and Approaches Plan: Goodwood Island Wharf	1:15 000 1:6000	11 August 2017	New edition incorporating new bathymetric data.
Aus 5000	Australian Index of Nautical Charts - Northern Portion 2017		11 August 2017	
Aus 5001	Australian Index of Nautical Charts - Southern Portion 2017		11 August 2017	

590 AUSTRALIA - Products - New Charts, New Editions, Withdrawn Charts

UKHO , Australian Hydrographic Service

New Charts

<i>Chart</i>	<i>Title and Geographical limits</i>	<i>Scale</i>	<i>Publication Date</i>	<i>Remarks</i>
NIL				

New Electronic Navigation Chart (Aus ENC)

<i>Cell Name</i>	<i>Title</i>	<i>Publication Date</i>	<i>Remarks</i>
NIL			

New Editions and Withdrawn Charts

<i>Chart</i>	<i>Title</i>	<i>Scale</i>	<i>Publication Date</i>	<i>Remarks</i>
Aus 51 Edition 3	Australia - North West Coast - Western Australia - Port of Broome	1:10 000	28 July 2017	New edition incorporating new bathymetric data. Chart Aus 51 Edition 2 dated 27 Aug 2010 is now superseded and must be withdrawn from use.

Admiralty publication

<i>NP No</i>	<i>Title</i>	<i>Date</i>	<i>Remarks</i>
NP203-18	Admiralty Tide Tables, Volume 3, Indian Ocean 2018 (including Tidal Stream Tables).	20/7/2017	

Chart permanently withdrawn

Charts listed above as withdrawn no longer meet chart carriage requirements and should be marked as "superseded" and replaced with the new chart/ new edition listed prior to passage through the area covered by the new chart.

When placing orders with a chart agent between notice of forthcoming edition and its publication, mariners should advise whether their order pertains to the current edition or the new edition.

For further details refer to the AHS website at www.hydro.gov.au for new edition and new chart stock arrival information.

591 AUSTRALIA - Product - Amendment to Seafarers Handbook for Australian Waters AHP20

Southern Ports Authority , Victorian Regional Channels Authority , Australian Hydrographic Service

Chapter 12 – Victoria - Western Port - 12.7.5 page 247

Replace table with accompanying block

Chapter 12 – Western Australia - Bunbury - 12.10.2 page 255

Replace table with accompanying block

Chapter 13 – page 270, 271 and 273

Replace pages with accompanying blocks**592 AUSTRALIA - NEW SOUTH WALES - Perpendicular Point - Light buoy southeastwards**

Parks Australia

Aus 811 [240/2017]

<i>Replace</i>	light buoy with special cylindrical light buoy, <i>Fl.Y.1.5s</i> , with topmark	31° 40'.8 S	152° 54'.6 E
----------------	---	-------------	--------------

593 AUSTRALIA - NEW SOUTH WALES - Port Jackson - Rose Bay to North Harbour - Buoys

Australian Sailing

Aus 201 [494/2017]

Insert	special spar buoy, without topmark	33° 51'.747 S	151° 15'.972 E
Move	buoy	33° 51'.72 S	151° 15'.11 E
	to	33° 51'.754 S	151° 15'.041 E
	buoy	33° 50'.98 S	151° 14'.99 E
	to	33° 50'.859 S	151° 14'.943 E
	buoy	33° 50'.50 S	151° 15'.33 E
	to	33° 50'.526 S	151° 15'.321 E
	buoy	33° 50'.36 S	151° 15'.56 E
	to	33° 50'.357 S	151° 15'.593 E
	buoy	33° 50'.49 S	151° 16'.20 E
	to	33° 50'.514 S	151° 16'.176 E
	buoy	33° 49'.90 S	151° 15'.91 E
	to	33° 49'.872 S	151° 15'.923 E
	buoy	33° 49'.44 S	151° 15'.35 E
	to	33° 49'.432 S	151° 15'.346 E
	buoy	33° 49'.28 S	151° 15'.31 E
	to	33° 49'.252 S	151° 15'.283 E
	buoy	33° 48'.99 S	151° 16'.09 E
	to	33° 48'.987 S	151° 16'.133 E
	buoy	33° 48'.35 S	151° 16'.53 E
	to	33° 48'.323 S	151° 16'.474 E
	buoy	33° 48'.23 S	151° 16'.76 E
	to	33° 48'.196 S	151° 16'.726 E
	buoy	33° 48'.23 S	151° 16'.64 E
	to	33° 48'.176 S	151° 16'.625 E
	buoy	33° 48'.16 S	151° 16'.53 E
	to	33° 48'.146 S	151° 16'.538 E
	buoy	33° 48'.18 S	151° 16'.42 E
	to	33° 48'.149 S	151° 16'.402 E
Delete	depth, 5 ₃ m	33° 49'.25 S	151° 15'.28 E

Aus 202 [277/2017]

Insert	special spar buoy, without topmark	33° 51'.754 S	151° 15'.041 E
Move	buoy	33° 50'.98 S	151° 14'.99 E
	to	33° 50'.859 S	151° 14'.943 E

594 PACIFIC OCEAN - Hunter Island to Matthew Island - Coastline

Australian Hydrographic Service

Aus 4602 (INT 602) [403/2017]

Insert	accompanying block	21° 20'.0 S	171° 25'.0 E
--------	--------------------	-------------	--------------

595 PACIFIC OCEAN - Nouvelle Caledonie - Shoal

UKHO

Aus 4060 (INT 60) [403/2017]

Delete	danger circle	19° 29'.0 S	161° 56'.0 E
--------	---------------	-------------	--------------

Aus 4602 (INT 602) [594/2017]

Delete	danger circle with legend, Shoal ED	19° 29'.0 S	161° 56'.0 E
--------	-------------------------------------	-------------	--------------

Aus 4604 (INT 604) [399/2017]

Delete	danger circle with legend, Shoal ED	19° 29'.0 S	161° 56'.0 E
--------	-------------------------------------	-------------	--------------

596 AUSTRALIA - QUEENSLAND - Gloucester Passage - Nav aids

Maritime Safety Queensland

Aus 268 [157/2017]

Insert	east cardinal spar light buoy, VQ(3)5s, without topmark	20° 03'.510 S	148° 27'.050 E
Replace	light beacon with port lateral spar light buoy, Fl.R.3s No6, without topmark	20° 03'.69 S	148° 26'.79 E
	light buoy with starboard lateral spar light buoy, Fl.G.2·5s No5, without topmark	20° 03'.77 S	148° 25'.99 E
	light buoy with port lateral cylindrical light buoy, Fl.R.2·5s No8, without topmark	20° 03'.65 S	148° 26'.29 E
Delete	light beacon	20° 03'.52 S	148° 27'.03 E
	structure colour, YBY	20° 03'.49 S	148° 26'.55 E

Aus 825 [1234/2016]

Replace	light buoy with starboard lateral spar light buoy, Fl.G.2·5s, without topmark	20° 03'.7 S	148° 26'.0 E
---------	---	-------------	--------------

597 AUSTRALIA - QUEENSLAND - Moreton Bay - North East Channel - Light buoys

Maritime Safety Queensland

Aus 235 [129/2017]

Insert	port lateral topmark	26° 57'.58 S	153° 20'.33 E
	starboard lateral pillar light buoy, Fl.G.4s NE1, with topmark	26° 59'.91 S	153° 19'.96 E
	port lateral topmark	27° 02'.29 S	153° 20'.80 E
Delete	light buoy	27° 00'.0 S	153° 20'.0 E

Aus 236 [501/2017]

Insert	starboard lateral pillar light buoy, Fl.G.4s NE1, with topmark	26° 59'.91 S	153° 19'.96 E
	port lateral topmark	27° 02'.29 S	153° 20'.80 E
Move	light buoy	27° 04'.7 S	153° 21'.4 E
	to	27° 04'.62 S	153° 21'.49 E
Delete	light buoy	27° 00'.0 S	153° 20'.0 E

Aus 814 [501/2017]

Insert	port lateral topmark	26° 57'.58 S	153° 20'.33 E
--------	----------------------	--------------	---------------

Aus 815 [1237/2016]

Insert	port lateral topmark	26° 57'.58 S	153° 20'.33 E
--------	----------------------	--------------	---------------

598 PAPUA NEW GUINEA - Tancred Reef to Stewart Reef - Depths
 HMAS *Benalla* and HMAS *Shepparton*

Aus 519 [385/2016]

Insert	depth, 33m, enclosed by contour	9° 00'.48 S	149° 20'.50 E
	depth, 14 ₂ m, enclosed by contour	9° 04'.08 S	149° 23'.69 E
	depth, 14 ₇ m, enclosed by contour	9° 07'.19 S	149° 20'.86 E
Replace	depth, 25m, with depth, 19 ₂ m	9° 06'.4 S	149° 23'.6 E
	depth, 75m, with depth, 46m	9° 08'.7 S	149° 24'.7 E
	depth, 38m, with depth, 29 ₆ m	9° 05'.3 S	149° 23'.8 E
Delete	depth, 21 ₅ m	9° 07'.4 S	149° 20'.7 E

Aus 520 [385/2016]

Insert	depth, 14 ₉ m, enclosed by contour	8° 52'.24 S	148° 52'.76 E
	depth, 16m, and extend contour NW to enclose	8° 53'.17 S	148° 55'.09 E
	depth, 24 ₃ m, enclosed by contour	8° 54'.90 S	149° 05'.68 E
	depth, 29 ₂ m, enclosed by contour	8° 55'.62 S	149° 05'.36 E
	depth, 33m, enclosed by contour	9° 00'.48 S	149° 20'.50 E
	depth, 14 ₂ m, enclosed by contour	9° 04'.08 S	149° 23'.69 E
	depth, 14 ₇ m, enclosed by contour	9° 07'.19 S	149° 20'.86 E
	depth, 0 ₃ m, enclosed by contour	8° 58'.53 S	149° 05'.74 E
Replace	depth, 25m, with depth, 19 ₂ m	9° 06'.4 S	149° 23'.6 E
	depth, 75m, with depth, 46m	9° 08'.7 S	149° 24'.7 E
	depth, 70m, with depth, 44m	8° 53'.7 S	149° 01'.9 E
	depth, 47m, with depth, 25 ₇ m	8° 57'.9 S	149° 06'.5 E
	depth, 40m, with depth, 34m	8° 57'.6 S	149° 11'.6 E
	depth, 35m, with depth, 29 ₃ m, enclosed by contour	8° 58'.2 S	149° 08'.9 E
	depth, 38m, with depth, 32m	8° 58'.7 S	149° 12'.9 E
Delete	depth, 38m, with depth, 29 ₆ m	9° 05'.3 S	149° 23'.8 E
	depth, 16 ₃ m, and enclosing contour	8° 52'.4 S	148° 53'.2 E
	depth, 19 ₇ m	8° 53'.4 S	148° 55'.2 E
	depth, 21 ₅ m	9° 07'.4 S	149° 20'.7 E

Aus 644 (plan, Tufi Harbour) [1000/2014]

Insert	depth, 14 ₇ m, enclosed by contour	9° 07'.187 S	149° 20'.855 E
--------	---	--------------	----------------

Aus 4620 (INT 620) [498/2017]

Replace	depth, 16 ₃ m, with depth, 14 ₉ m	8° 52'.6 S	148° 52'.9 E
---------	---	------------	--------------

Aus 4621 (INT 621) [498/2017]

Replace	depth, 16 ₃ m, with depth, 14 ₉ m	8° 52'.6 S	148° 52'.9 E
---------	---	------------	--------------

599 AUSTRALIA - TORRES STRAIT - Badu Island - Nomenclature

J Tucker

Aus 841 [1063/2016]

Amend	settlement to <i>Badu</i>	10° 09'.4 S	142° 10'.2 E
Delete	settlement, Badu	10° 07'.9 S	142° 11'.1 E

600 AUSTRALIA - NORTHERN TERRITORY - South West Vernon Island - Brooke Point - Light

Australian Maritime Safety Authority

Aus 20 [345/2016]

Amend	light range to 11M	12° 05'.9 S	131° 01'.9 E
-------	--------------------	-------------	--------------

Aus 722 [136/2017]

Amend	light range to 11M	12° 05'.9 S	131° 01'.9 E
-------	--------------------	-------------	--------------

601 AUSTRALIA - TIMOR SEA - Depths

Geoscience Australia

Aus 312 [550/2017]

Insert	depth, 88m, enclosed by contour	11° 27'.41 S	127° 08'.83 E
	depth, 99m, enclosed by contour	11° 26'.93 S	127° 06'.20 E
	depth, 79m, and extend contour S to enclose	11° 25'.87 S	127° 06'.47 E
	depth, 81m, and extend contour E to enclose	11° 24'.21 S	127° 04'.04 E
	depth, 49m, enclosed by contour	11° 24'.10 S	127° 01'.40 E
	depth, 81m, enclosed by contour	11° 25'.36 S	127° 02'.29 E
	depth, 81m, enclosed by contour	11° 25'.64 S	127° 01'.41 E
	depth, 76m	11° 27'.18 S	127° 02'.22 E
	depth, 55m	11° 26'.29 S	126° 58'.04 E
	depth, 62m	11° 24'.84 S	126° 56'.08 E
	depth, 40m, and extend contour N to enclose	11° 19'.89 S	126° 57'.44 E
Delete	depth, 81m	11° 27'.6 S	127° 02'.7 E
	depth, 44m	11° 20'.2 S	126° 57'.2 E
	depth, 88m	11° 24'.7 S	126° 57'.4 E

Aus 315 [407/2017]

Insert	depth, 29 ₄ m	12° 04'.52 S	127° 26'.19 E
	depth, 58m	11° 53'.55 S	127° 03'.82 E
	depth, 87m, enclosed by contour	11° 49'.80 S	127° 03'.95 E
	depth, 74m, and extend contour SE to enclose	11° 49'.44 S	127° 00'.64 E
	depth, 88m, enclosed by contour	11° 28'.39 S	127° 12'.47 E
	depth, 88m, enclosed by contour	11° 27'.41 S	127° 08'.83 E
	depth, 99m, enclosed by contour	11° 26'.93 S	127° 06'.20 E
	depth, 79m, and extend contour S to enclose	11° 25'.87 S	127° 06'.47 E
	depth, 81m, and extend contour E to enclose	11° 24'.21 S	127° 04'.04 E
	depth, 49m, enclosed by contour	11° 24'.10 S	127° 01'.40 E
	depth, 81m, enclosed by contour	11° 25'.36 S	127° 02'.29 E
	depth, 81m, enclosed by contour	11° 25'.64 S	127° 01'.41 E
	depth, 76m	11° 27'.18 S	127° 02'.22 E
	depth, 55m	11° 26'.29 S	126° 58'.04 E
	depth, 62m	11° 24'.84 S	126° 56'.08 E
	depth, 40m, and extend contour N to enclose	11° 19'.89 S	126° 57'.44 E
Delete	depth, 33m	12° 04'.3 S	127° 26'.0 E
	depth, 81m	11° 27'.6 S	127° 02'.7 E
	depth, 44m	11° 20'.2 S	126° 57'.2 E
	depth, 88m	11° 24'.7 S	126° 57'.4 E

Aus 4721 (INT 721) [505/2017]

Insert	out of position depth, 40m	11° 19'.9 S	126° 57'.4 E
--------	----------------------------	-------------	--------------

602 AUSTRALIA - WESTERN AUSTRALIA - Ashburton Wreck - Wreck

Pilbara Ports Authority

Aus 64 [453/2017]

Replace	depth, 2 ₆ m, with depth, 2 ₁ m	21° 40'.6 S	115° 01'.0 E
---------	---	-------------	--------------

Aus 69 (plan, Port of Ashburton) [410/2017]

Replace	depth, 2 ₆ m, with depth, 2 ₁ m	21° 40'.64 S	115° 01'.02 E
---------	---	--------------	---------------

603 AUSTRALIA - WESTERN AUSTRALIA - Broome - Roebuck Deep - Depths

Department of Transport WA

Aus 50 [1110/2016]

Insert	accompanying block A	17° 59'.28 S	122° 11'.99 E
	accompanying block B	17° 54'.50 S	122° 19'.00 E

604 AUSTRALIA - WESTERN AUSTRALIA - Exmouth Boat Harbour - Nav aids

Department of Transport WA Notice 77/2017

Aus 72 (plan, Exmouth Boat Harbour) [387/2016]Insert port lateral spar light buoy, *Fl.R.3s*, with topmark 21° 57'.413 S 114° 08'.547 E

Delete light beacon 21° 57'.43 S 114° 08'.54 E

605 AUSTRALIA - WESTERN AUSTRALIA - North West Cape - Obstruction removed and restricted area revoked northwestwards

BHP Billiton Petroleum Pty Ltd

Aus 328 [554/2017]

Insert accompanying block 21° 26'.0 S 113° 40'.0 E

Aus 329 [364/2017]

Insert accompanying block 21° 26'.0 S 113° 40'.0 E

Aus 4723 (INT 723) [364/2017]

Delete depth, 496m, and enclosing danger circle with legend, Obstn 21° 27'.0 S 113° 50'.0 E

Aus 4725 (INT 725) [507/2017]

Delete depth, 496m, and enclosing danger circle with legend, Obstn 21° 27'.0 S 113° 50'.0 E

606 AUSTRALIA - WESTERN AUSTRALIA - Oyster Harbour - Beacon

Department of Transport WA Notice WA1083/16/2017

Aus 110 [205/2017]

Delete beacon 34° 59'.30 S 117° 58'.33 E

Aus 110 (inset, Oyster Harbour) [205/2017]

Delete beacon 34° 59'.30 S 117° 58'.33 E

607 AUSTRALIA - WESTERN AUSTRALIA - Taunton Reef to Ashburton - Depths

Pilbara Ports Authority

Aus 63 [920/2016]Replace depth, 15₂m, with depth, 14₉m, enclosed by contour 21° 17'.8 S 115° 15'.0 E**Aus 64 [602/2017]**

Insert depth, 2m, enclosed by contour 21° 40'.68 S 115° 01'.36 E

depth, 12₆m 21° 30'.79 S 115° 02'.83 Edepth, 13₇m 21° 31'.12 S 115° 02'.93 E

Delete depth, 3m 21° 40'.6 S 115° 01'.3 E

depth, 14₂m 21° 30'.7 S 115° 03'.0 E**Aus 69 (plan, Port of Ashburton) [602/2017]**

Insert depth, 2m, enclosed by contour 21° 40'.641 S 115° 01'.328 E

depth, 2m, enclosed by contour 21° 40'.675 S 115° 01'.358 E

depth, 1₆m, and extend contour E to enclose 21° 40'.408 S 114° 59'.886 EDelete depth, 2₃m 21° 40'.41 S 114° 59'.90 E**Aus 328 [605/2017]**Replace depth, 15₂m, with depth, 14₉m, enclosed by contour 21° 17'.8 S 115° 15'.0 E**Aus 743 [58/2017]**Insert depth, 12₆m 21° 30'.79 S 115° 02'.83 EReplace depth, 15₂m, with depth, 14₉m, enclosed by contour 21° 17'.8 S 115° 15'.0 E

608 AUSTRALIA - SOUTH AUSTRALIA - Gulf St Vincent - Port Wakefield - Lights

Department of Planning, Transport and Infrastructure SA

Aus 485 [282/2017]

Delete lights 34° 11'.2 S 138° 08'.8 E

Aus 781 [876/2016]

Delete lights 34° 11'.2 S 138° 08'.8 E

609 AUSTRALIA - VICTORIA - Western Port - Eastern Entrance - Depths; infrastructure; nav aids

D Kershaw , Parks Victoria , Takanna Pty Ltd , Farren Group

*Note: block for Aus 801 to be published in due course.***Aus 150 [557/2017]**Insert accompanying block A 38° 32'.0 S 145° 22'.4 E
accompanying block D 38° 31'.0 S 145° 33'.0 E**Aus 150 (plan, Eastern Entrance to Western Port) [557/2017]**

Insert accompanying block B 38° 32'.0 S 145° 22'.4 E

Aus 150 (plan, The Narrows) [557/2017]

Insert accompanying block C 38° 31'.0 S 145° 22'.0 E

610(T)/2017 AUSTRALIA - NEW SOUTH WALES - NEW ZEALAND - FIJI - SAMOA - Survey operations completed
Former Notice - 108(T)/2017 is cancelled
 EGS Survey Pty Ltd

Cancel this notice on receipt.

Chart formerly affected - Aus 197 - Aus 489 - Aus 808 - Aus 4060 (INT 60) - Aus 4601 (INT 601) - Aus 4602 (INT 602) - Aus 4604 (INT 604) - Aus 4643 (INT 643)

611(T)/2017 AUSTRALIA - QUEENSLAND - Brisbane River - Bulimba Reach - Harbour works
 Maritime Safety Queensland

Works are in progress in the vicinity of position 27° 27'.25 S 153° 03'.18 E.

The barge *Calliope* is on site and has deployed anchors marked by special light buoys, Q. The barge will display appropriate lights and shapes.

Mariners are advised to navigate with caution in the area.

Chart temporarily affected - Aus 238

612(T)/2017 AUSTRALIA - QUEENSLAND - Fairway Channel - Light beacon relit; racon restored
Former Notice - 466(T)/2017 is cancelled
 Australian Maritime Safety Authority

Cancel this notice on receipt.

Chart formerly affected - Aus 833 - Aus 4620 (INT 620)

613(T)/2017 AUSTRALIA - QUEENSLAND - Hay Point - Harbour works completed
Former Notice - 525(T)/2017 is cancelled
 Maritime Safety Queensland

Cancel this notice on receipt.

Chart formerly affected - Aus 250

614(T)/2017 AUSTRALIA - QUEENSLAND - Port of Airlie - Harbour works
 Maritime Safety Queensland Notice 291(T)/2017, 295(T)/2017

Works are in progress in the vicinity of position 20° 16'.23 S 148° 43'.52 E. The vessel *Zeus* is on site and will monitor VHF Ch 16.

Works are also in progress within an exclusion zone bounded by the coast and the following positions:

20° 16'.41 S 148° 43'.54 E

20° 16'.38 S 148° 43'.60 E

20° 16'.32 S 148° 43'.60 E .

Mariners are advised to navigate with caution in the area.

Chart temporarily affected - Aus 269

615(T)/2017 AUSTRALIA - QUEENSLAND - Russell Heads - Light withdrawn
 Maritime Safety Queensland Notice 282(T)/2017

The light, *Fl.2-5s* (17° 13'.35 S 145° 58'.10 E), has been temporarily withdrawn.

Chart temporarily affected - Aus 829 - Aus 830

616(T)/2017 AUSTRALIA - QUEENSLAND - Shoalwater Bay - Live firing

Former Notice - 529(T)/2017 is cancelled
Maritime Safety Queensland Notice 238(T)/2017

Live firing will be conducted in the Shoalwater Bay training area during the period 5 to 22 August 2017.

A marine danger area extends to all internal waters bounded by the following positions:

22° 09'.00 S 150° 25'.00 E
22° 14'.76 S 150° 20'.31 E
22° 24'.52 S 150° 24'.57 E
22° 25'.03 S 150° 37'.11 E
22° 15'.28 S 150° 38'.10 E
22° 09'.00 S 150° 37'.00 E.

All waters, creeks, beaches and other areas within the declared marine danger area are not available for access.

There will be safe anchorages available at Freshwater, Port Clinton, West Water Port Clinton, South Arm Port Clinton, Pearl Bay and Island Head Creek.

Mariners are advised to keep clear of this area throughout the above times.

Chart temporarily affected - Aus 260 - Aus 261 - Aus 367 - Aus 822

617(T)/2017 AUSTRALIA - QUEENSLAND - Thursday Island - Vivien Point - Light beacon destroyed

Former Notice - 571(T)/2017 is cancelled
Maritime Safety Queensland Notice 241(T)/2017, 273(T)/2017

The port lateral light beacon, Q.R (10° 35'.34 S 142° 12'.56 E), has been destroyed; port lateral light buoy, Q.R, exists in situ.

Chart temporarily affected - Aus 293 - Aus 299

618(T)/2017 AUSTRALIA - NORTHERN TERRITORY - Evans Shoal - Drill rig eastwards moved

Former Notice - 1262(T)/2016 is cancelled
ConocoPhillips Australia

Cancel this notice on receipt.

Chart formerly affected - Aus 310 - Aus 4721 (INT 721)

619(T)/2017 AUSTRALIA - NORTHERN TERRITORY - Muiron Islands - Drill rig northwards

MODU *Atwood Osprey*, Woodside Energy Ltd

Drill rig *Atwood Osprey* is conducting drilling operations in position 21° 21'.15 S 114° 26'.17 E.

Chart temporarily affected - Aus 328 - Aus 744 - Aus 4723 (INT 723) - Aus 4725 (INT 725)

620(T)/2017 AUSTRALIA - TIMOR SEA - NORTHERN TERRITORY - Sahul Banks to Darwin - Pipeline operations
ConocoPhillips Australia

Vessel *Pinnacle* is conducting pipeline works from Bayu-Undan platform to Darwin between the following positions:

11° 04'.13 S 126° 37'.03 E
 11° 16'.85 S 126° 53'.49 E
 12° 00'.62 S 129° 42'.16 E
 12° 00'.79 S 129° 53'.65 E
 12° 04'.09 S 129° 56'.53 E
 12° 18'.68 S 130° 38'.44 E
 12° 23'.80 S 130° 44'.87 E
 12° 28'.12 S 130° 48'.32 E
 12° 31'.60 S 130° 50'.01 E
 12° 31'.57 S 130° 51'.63 E.

Mariners are advised to navigate with caution in the area.

Chart temporarily affected - Aus 24 - Aus 25 - Aus 26 - Aus 27 - Aus 28 - Aus 29 - Aus 309 - Aus 311 - Aus 312 - Aus 315 - Aus 316 - Aus 722 - Aus 4721 (INT 721)

621(T)/2017 AUSTRALIA - WESTERN AUSTRALIA - Browse Island - FPSO northwestwards
INPEX

On or about 11 August 2017 the FPSO *Ichthys Venturer* and accompanying tugs will be in a holding area bounded by the following positions:

14° 11'.28 S 123° 02'.88 E
 14° 11'.27 S 123° 13'.18 E
 14° 01'.23 S 123° 13'.17 E
 14° 01'.23 S 123° 02'.88 E.

The *Ichthys Venturer* will then be relocated to final position 13° 57'.91 S 123° 19'.05 E where it will undergo a mooring campaign.

5M clearance is requested around *Ichthys Venturer*.

Chart temporarily affected - Aus 319 - Aus 320 - Aus 322 - Aus 4721 (INT 721) - Aus 4722 (INT 722)

622(T)/2017 AUSTRALIA - WESTERN AUSTRALIA - Browse Island - Subsea operations northwestwards
INPEX

Vessel *Lodbrog* is conducting subsea operations in the vicinity of position 13° 58'.5 S 123° 17'.3 E.

Mariners are advised to navigate with caution in the area. 2M clearance requested.

Chart temporarily affected - Aus 319 - Aus 320 - Aus 4721 (INT 721) - Aus 4722 (INT 722)

623(T)/2017 AUSTRALIA - WESTERN AUSTRALIA - Browse Island - Drill rig northwestwards
Former Notice - 477(T)/2017 is cancelled
MODU *ENSCO 5006*

Drill rig *ENSCO 5006* is conducting drilling operations in position 13° 49'.48 S 123° 12'.81 E.

Chart temporarily affected - Aus 319 - Aus 320 - Aus 4721 (INT 721) - Aus 4722 (INT 722)

624(T)/2017 AUSTRALIA - WESTERN AUSTRALIA - Browse Island - Subsea operations northwestwards
Technip FMC Oceania

Vessel *Island Performer* is conducting subsea operations in the vicinity of position 13° 51'.69 S 123° 16'.38 E.

Chart temporarily affected - Aus 319 - Aus 320

625(T)/2017 AUSTRALIA - WESTERN AUSTRALIA - Exmouth - Harbour works completed

Former Notice - 989(T)/2016 is cancelled
Department of Transport WA

Cancel this notice on receipt.

Chart formerly affected - Aus 72

626(T)/2017 AUSTRALIA - WESTERN AUSTRALIA - Geraldton - Dredging operations completed

Former Notice - 479(T)/2017 is cancelled
Mid West Ports

Cancel this notice on receipt.

Chart formerly affected - Aus 81

627(T)/2017 AUSTRALIA - WESTERN AUSTRALIA - Heywood Shoal - Survey operations

Blue Ocean Monitoring

An AUV is operating in an area bounded by the following positions:

13° 39'.66 S 123° 56'.32 E

13° 50'.71 S 124° 56'.21 E

13° 32'.83 S 125° 00'.41 E

13° 22'.74 S 124° 00'.17 E.

Chart temporarily affected - Aus 319 - Aus 320 - Aus 4721 (INT 721) - Aus 4722 (INT 722)

628(T)/2017 AUSTRALIA - WESTERN AUSTRALIA - Port Hedland - Hunt Point - Light buoys withdrawn

Former Notice - 344(T)/2017 is cancelled
Pilbara Ports Authority Notice PH12/2017

Cancel this notice on receipt.

Chart formerly affected - Aus 52 - Aus 53 - Aus 54

629(T)/2017 AUSTRALIA - WESTERN AUSTRALIA - Port Walcott - Drilling operations completed

Former Notice - 1214(T)/2015 is cancelled
P King

Cancel this notice on receipt.

Chart formerly affected - Aus 55 - Aus 57 - Aus 326 - Aus 327 - Aus 740 - Aus 741

630(T)/2017 AUSTRALIA - WESTERN AUSTRALIA - Rankin Bank - Subsea operations

Woodside Energy Ltd

Subsea operations are in progress in an area bounded by the following positions:

19° 48'.0 S 115° 38'.0 E

19° 51'.0 S 115° 40'.0 E

19° 40'.0 S 115° 59'.0 E

19° 36'.0 S 115° 57'.0 E.

Chart temporarily affected - Aus 327

631(T)/2017 AUSTRALIA - WESTERN AUSTRALIA - Rottnest Island - Scientific instrument

Curtin University

A lit scientific instrument, marked by a buoy, surfaces three times daily to transmit data in the vicinity of position 31° 59'.00 S 115° 23'.12 E.

Chart temporarily affected - Aus 754

632(T)/2017 AUSTRALIA - WESTERN AUSTRALIA - Thevenard Island - Well plug and abandonment works completed

Former Notice - 1095(T)/2016 is cancelled
MODU ENSCO 107

Cancel this notice on receipt.

Chart formerly affected - Aus 64 - Aus 328 - Aus 743 - Aus 744 - Aus 4723 (INT 723) - Aus 4725 (INT 725)

633(T)/2017 AUSTRALIA - WESTERN AUSTRALIA - Thevenard Island - Platform unlit southwards

Pilbara Ports Authority Notice A10(T)/2017

The *Cowle* platform, *Mo(U)10s* (21° 31'.33 S 114° 58'.16 E), is unlit.

Chart temporarily affected - Aus 64 - Aus 328 - Aus 743 - Aus 744 - Aus 4723 (INT 723) - Aus 4725 (INT 725)

634(T)/2017 AUSTRALIA - VICTORIA - Lakes Entrance - Dredging operations

Former Notice - 486(T)/2017 is cancelled
Gippsland Ports Notice 190(T)/2017

The dredge *Kalimna* is continuously dredging within Lakes Entrance and inner channels, including Reeve Channel; The Narrows; approach to Hopetoun Channel and approach to Cunninghame Arm.

The dredge will display appropriate lights and shapes.

Mariners are advised to navigate with caution in the area.

Chart temporarily affected - Aus 182

HYDROGRAPHIC REPORTS

<i>Locality</i>	<i>Report</i>	<i>Ship/Authority</i>	<i>Observer</i>
WESTERN AUSTRALIA- Port Walcott	Drilling operations completed		P King
TORRES STRAIT- Badu Island	Nomenclature		J Tucker

III

NAVIGATION WARNINGS

The Australian Hydrographic Service will no longer compile Section III of the Australian Notices to Mariners. For the most up to date navigation warnings please refer to:

AMSA Navigation Warnings

<http://amsa.gov.au/search-and-rescue/distress-and-safety-comms/msi/msi-email/index.asp>

New Zealand Notices to Mariners (Navarea XIV warnings)

<http://www.linz.govt.nz/sea/maritime-safety/notices-mariners>

Western Port, VIC (38° 22'S, 145° 13'E)	
UN/LOCODE: AU WEP	
Paper charts:	Aus 150, 151, 152
AusENC cells:	AU5152P1 - P4, AU439145
Security Regulated Port:	Yes
Operator:	Victorian Regional Channels Authority
Website:	www.regionalchannels.vic.gov.au
Email:	admin@regionalchannels.vic.gov.au
Harbour Control	
Mobile:	+61 428 549 235
Email:	dhm.hastings@regionalchannels.vic.gov.au
Fax:	+61 3 5983 8684
Pilotage:	Compulsory >35m LOA
Pilot:	Contact Harbour Control 24/7
Telephone:	+61 428 549 235
Pilot Boarding Ground:	38° 32.75'S, 145° 01.84'E
Communication:	"Hastings Harbour Control"
Call up, emergencies:	VHF Ch 16, 14
Harbour Control:	VHF Ch 14
Pilots and Tugs:	VHF Ch 06, 08
Notice of ETA:	48 hours
Notice of ETD:	24 hours
For more information:	www.regionalchannels.vic.gov.au

Page 247

Bunbury, WA (33° 19'S, 115° 38'E)	
UN/LOCODE: AU BUY	
Paper charts:	Aus 115, 755
AusENC cells:	AU5115P1, AU434115
Security Regulated Port:	Yes
Port Authority:	Southern Ports Authority
Website:	www.southernports.com.au
Email:	enquiries.bunbury@southernports.com.au
Telephone:	+61 8 9729 6527
Pilot	
Email:	pilot@southernports.com.au
Pilotage:	Compulsory > 150 GRT
Pilot Boarding Ground:	33° 15.85'S, 115° 37.40'E
Communication:	"Port of Bunbury"
Call up, emergencies:	VHF Ch 16
On arrival/ Pilots/ tugs:	VHF Ch 12
Notice of ETA:	48 hours
For more information:	www.southernports.com.au

Page 255

Definitions of Operational Areas - NSCV Part B	
Area A	Unlimited domestic operations, including operations greater than 200 nautical miles to seaward of the coast.
Area B	Operations within a limit of 200 nautical miles to seaward of the coast; or within such lesser limits as may be specified.
Area C	Operations within: a) 30 nautical miles from the seaward limit of a safe haven, including designated smooth or partially smooth waters (i.e. sheltered waters), or within such lesser limits as may be specified; or b) specified waters designated by the Authority as "restricted offshore".
Area D	Operations within specified geographical limits in waters designated by the Authority as partially smooth waters.
Area E	Operations within specified geographical limits in waters designated by the Authority as smooth waters (see also Clause 1.8 - definition of smooth waters).

Notes:

1. Nautical charts and publications, including paper nautical charts, manuscript publications, digital publications, official ENC and official RNC, shall be those originated by a relevant government authority or an authorized National Hydrographic Office (Annex B to NSCV Part C, Section 7C).
2. Using the ECDIS or ECS options includes the requirement for backup (Table 2 and Annex C to NSCV Part C, Section 7C).
3. It is good operational practice to carry appropriate paper nautical charts on vessels less than 12 metres in length operating outside port or harbour limits (Table 2 of NSCV Part C, Section 7C).

13.2 Official Nautical Charts and Publications

1. Official nautical charts and publications are those issued by, or on the authority of, a Government, authorised Hydrographic Office or other relevant institution, and designed to meet the requirements of marine navigation. In Australia, the relevant hydrographic authority is the Australian Hydrographic Service (AHS) (see *Navigation Act 2012 (Cth)* Chapter 6 Part 6 Division 5).
2. Official nautical products published by the AHS include:
 - ENC - An ENC is an official vector electronic chart. These are available via the AusENC service and the various distributors aligned to the International Centre for ENC (IC-ENC).
 - Paper nautical charts
 - Notices to Mariners (NtM)
 - Australian National Tide Tables (ANTT) (manuscript) and AusTides (digital)
 - Australian Chart and Publications Maintenance Handbook
 - Seafarers Handbook for Australian Waters
3. More information on these products can be found at the AHS website or in the Australian Chart and Publications Maintenance Handbook.
4. The Australian Hydrographic Service contact details are:

Postal address:	Locked Bag 8801, Wollongong NSW 2500
Telephone:	+61 2 4223 6500
Fax:	+61 2 4223 6599
Email	
New or revised information affecting charts:	datacentre@hydro.gov.au
Products - wholesale orders and enquiries:	hydro.sales@defence.gov.au
Website:	www.hydro.gov.au

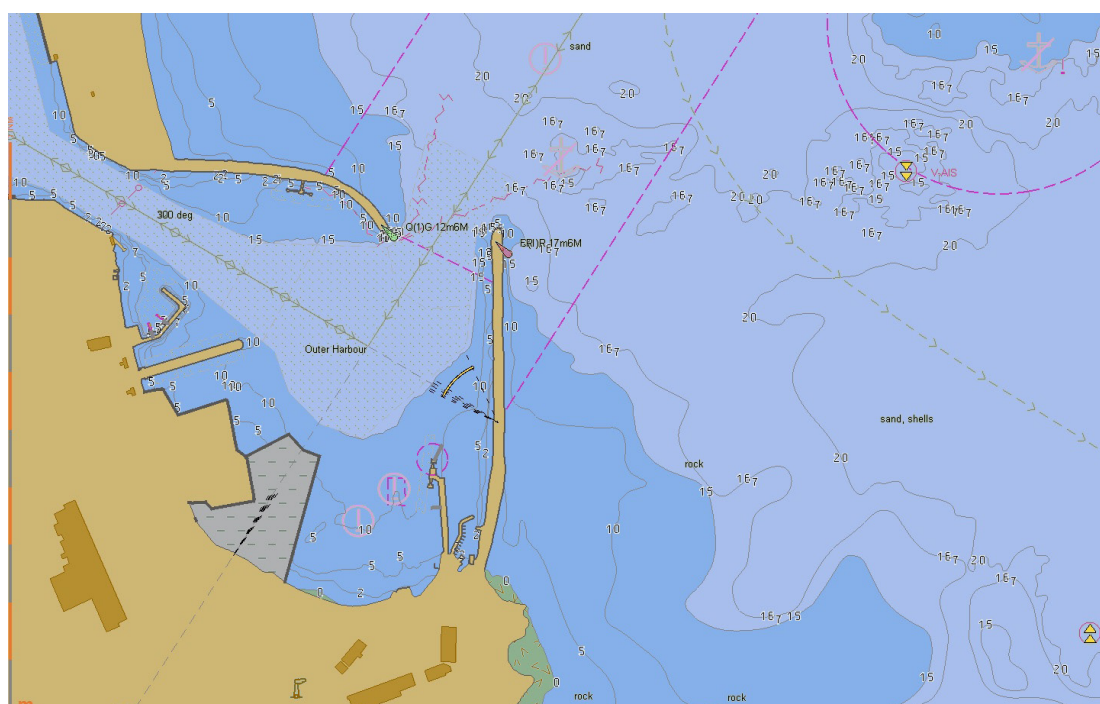
13.3 Important Information for Chart Users

1. It is important for charts and publications to be the current edition and kept up to date, particularly when navigating within constrained or environmentally sensitive areas, as changes have the potential to affect navigation safety. Use of a superseded or withdrawn charts does not meet the legal requirements for carriage and use of up to date charts.
2. ENC Updates and NtM are only relevant to the chart edition that they are issued for. As each new edition of an ENC or paper chart or publication is published, it is likely to include significantly enhanced base information and detail that has not been previously published by ENC Update / NtM. ENC Updates can only be applied in the correct sequence to the correct edition, while details in a NtM applicable to the current paper chart may simply not fit or merge with the details in the superseded edition of a paper chart or publication. ENC updates and NtM are never issued for withdrawn or superseded editions.
3. Charts can contain a wide variety of individual hydrographic surveys, even within the limits of a single chart. The quality of individual surveys may vary from place to place due to the age of the survey and the technology used. The AHS makes all reasonable efforts to ensure the accuracy and completeness of all information, including third party information, which it uses in nautical charts and publications, by making an assessment of all information received. This assessment is indicated on both ENC and paper charts via the Zone of Confidence (ZOC) system (see 13.10).
4. Information regarding unofficial charts may be found at 13.5.5.

13.4 Australian Published Charts

1. The AHS currently publishes approximately 500 official paper nautical charts and 900 official Electronic Navigational Charts (AusENC, Australian ENC). Coverage includes Australia, Papua New Guinea, Solomon Islands, Timor Leste (paper charts only) and the Australian Antarctic Territory.
2. The Australian Chart Index (ACI) provides an online catalogue of Australian paper nautical charts and AusENC packs. The ACI can be found on the AHS website:

Website:	www.hydro.gov.au/prodserv/paper/charts.htm
----------	--



13.5.3 ENC updates

1. ENC Updates are published by the AHS on a fortnightly cycle. They contain the same or greater information than NtM for paper charts, including all permanent, temporary and preliminary NtM, as well as paper chart block corrections (which are actually derived from the updated ENC).
2. ENC Updates on the AHS website are related to the most recent January or July AusENC base disk. ENC Updates are available as follows:
 - AHS website as individual fortnightly downloads (each download must be loaded into ECDIS in the correct order)
 - AHS website as cumulative downloads (only the latest download needs to be loaded into ECDIS as it contains all previous fortnightly updates already in the correct order)
 - From any international ENC distributor supplying Australian published ENC as part of their services.
3. Most ENC updates result in a direct change to content within the existing ENC (such as a light being relocated or its characteristics altered). Where a change results in a new edition of the ENC, a new permit will be issued automatically and without charge for that ENC to cover the remainder of the subscription period.

13.5.4 Raster Nautical Charts

1. Selected RNC of Australian, Papua New Guinean and Solomon Island waters remain available as RNC via the United Kingdom Hydrographic Office (UKHO) ARCS service. These are derived from UK copies of selected published charts and are not supported by the AHS. In the event that differences are noted between an Australian ENC and a UK produced RNC, the Australian published ENC must be considered the authoritative chart.

13.5.5 Unofficial electronic charts

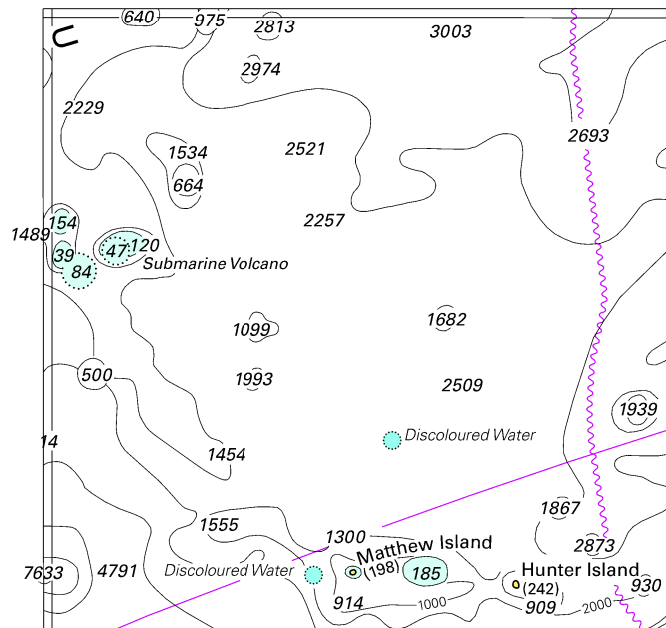
1. A number of commercial companies are licensed to copy paper charts or ENC into their own proprietary electronic format. These are for use in small chart plotters by recreational vessel operators only. The quality of copying is variable and the update services are generally very delayed, even though they may appear relatively frequent. These charts are not warranted for navigational use by either the AHS or their manufacturer and all are marked “not for navigation.” Instances include reefs missing from charts and a major land reclamation area remaining missing for two years after completion of works, both despite being included on the official charts. These charts do not meet carriage requirements for any commercial vessel of 12 metres or more in length.

13.6 Paper Nautical Charts and Notices to Mariners

13.6.1 Australian paper nautical chart indexes

1. The location and extent of all Australian paper nautical charts is shown in the Australian Hydrographic Service Index of Nautical Charts. These are published in paper form annually. The Index is published as two sheets as follows:
 - Aus 5000 - Australian Hydrographic Service Index of Nautical Charts - Northern Portion
 - Aus 5001 - Australian Hydrographic Service Index of Nautical Charts - Southern Portion
2. Mariners should note that the UK Hydrographic Office’s Admiralty Chart Catalogue does not include all charts within the Australian paper nautical chart series.

To accompany Australian Notice to Mariners 594/2017

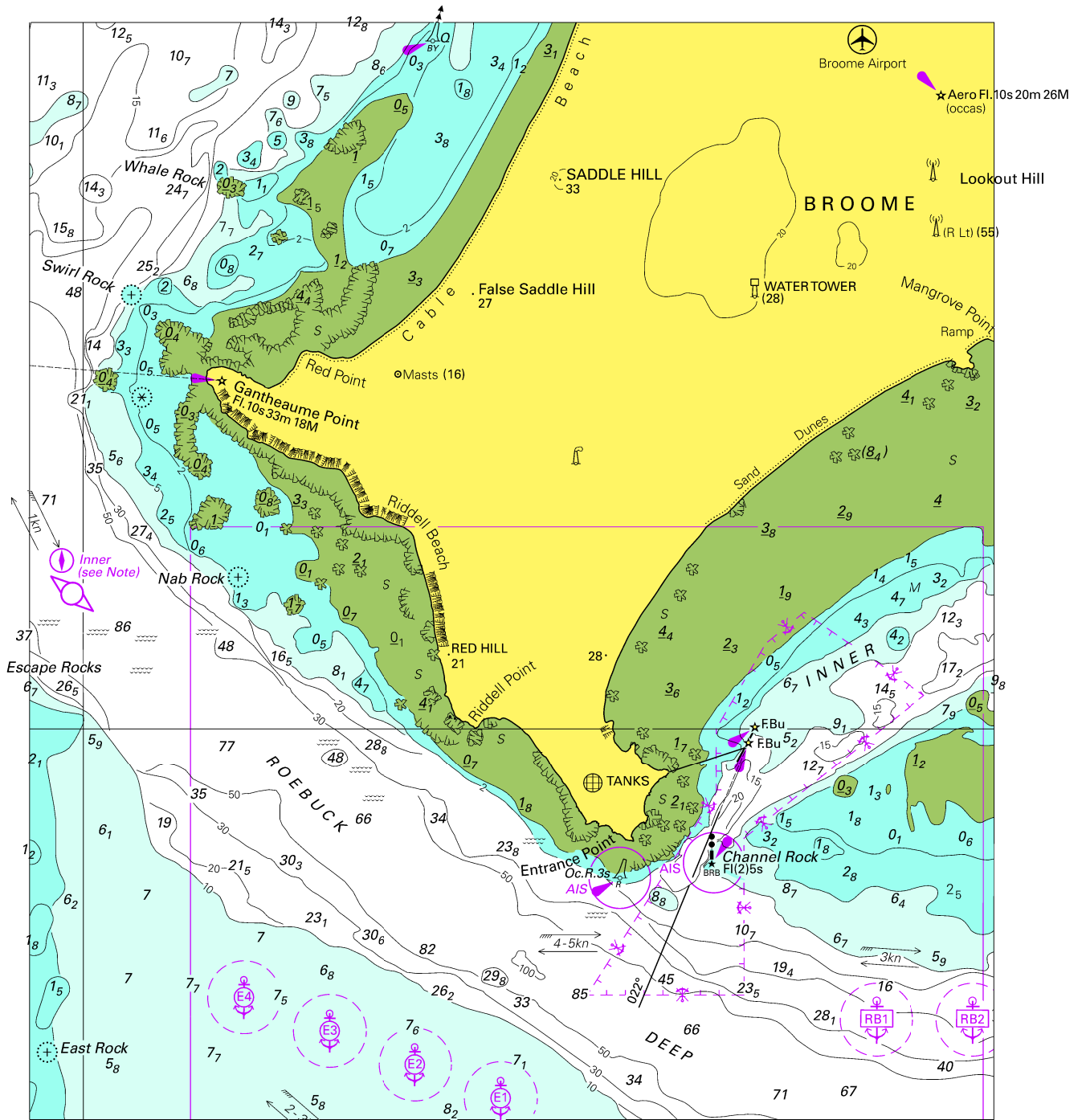


© Commonwealth of Australia 2017

Block for Chart Aus 4602

(83.4 x 82.0mm)

To accompany Australian Notice to Mariners 603/2017

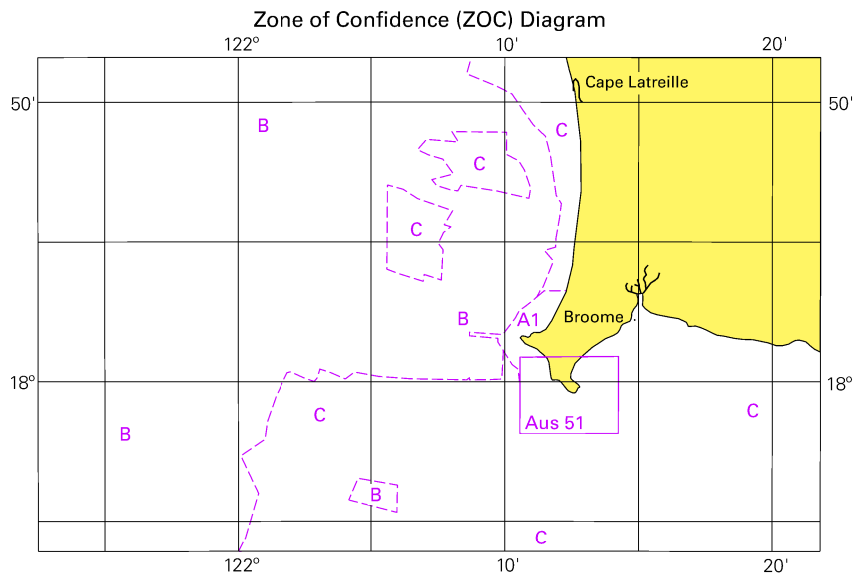


Block A for Chart Aus 50

© Commonwealth of Australia 2017

(158.9 x 180.6mm)

To accompany Australian Notice to Mariners 603/2017

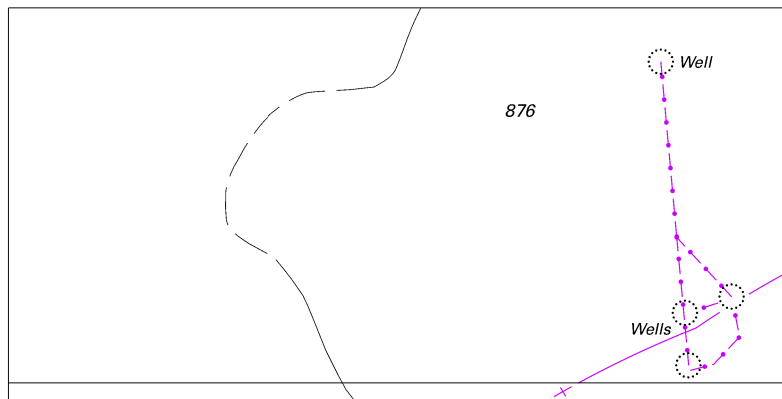


© Commonwealth of Australia 2017

Block B for Chart Aus 50

(103.5
103.3 x 65.3mm)

To accompany Australian Notice to Mariners 605/2017

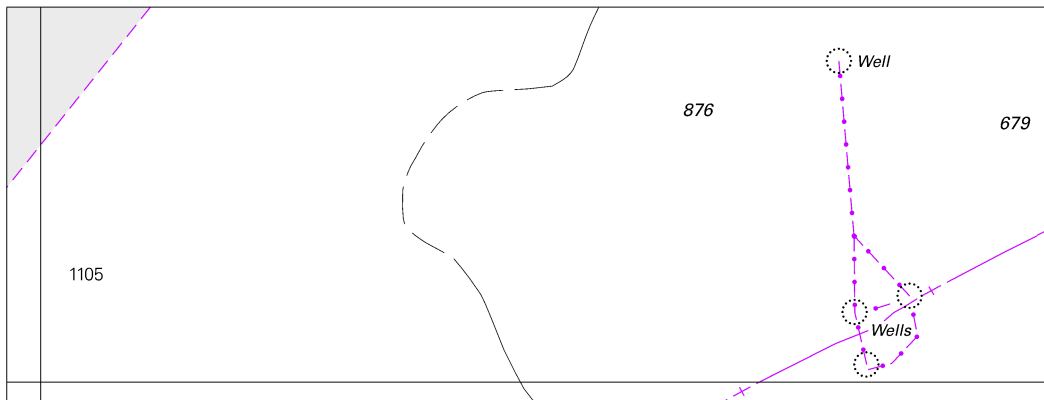


© Commonwealth of Australia 2017

Block for Chart Aus 328

(103.5 x 52.0mm)

To accompany Australian Notice to Mariners 605/2017

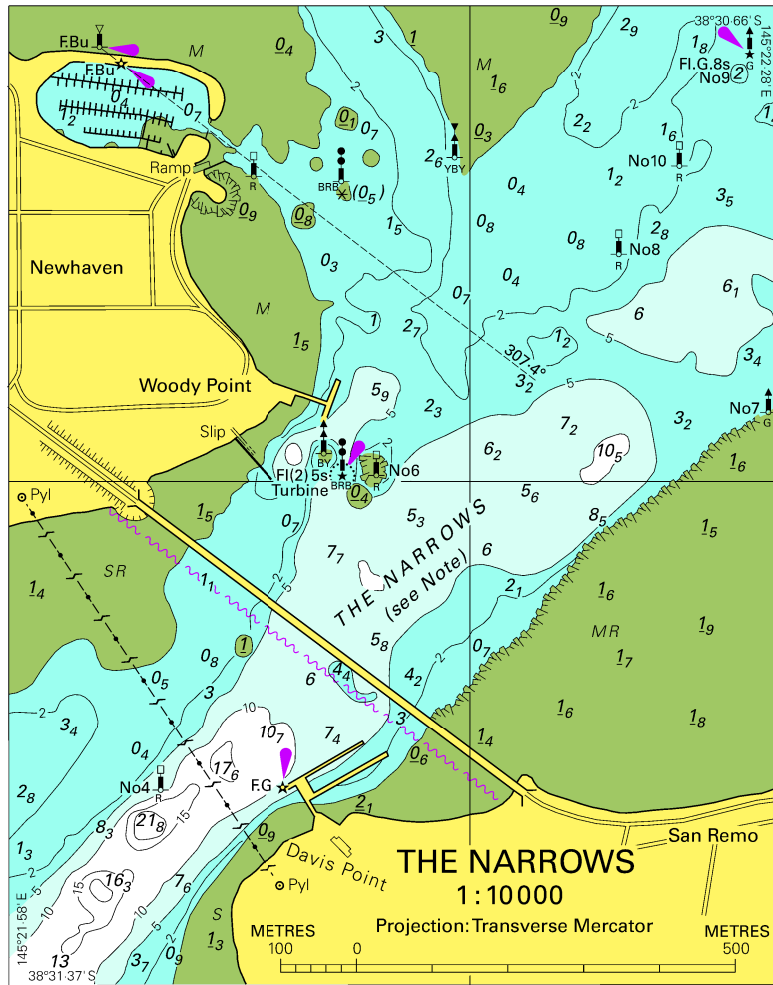


Block for Chart Aus 329

© Commonwealth of Australia 2017

(137.8 x 52.0mm)

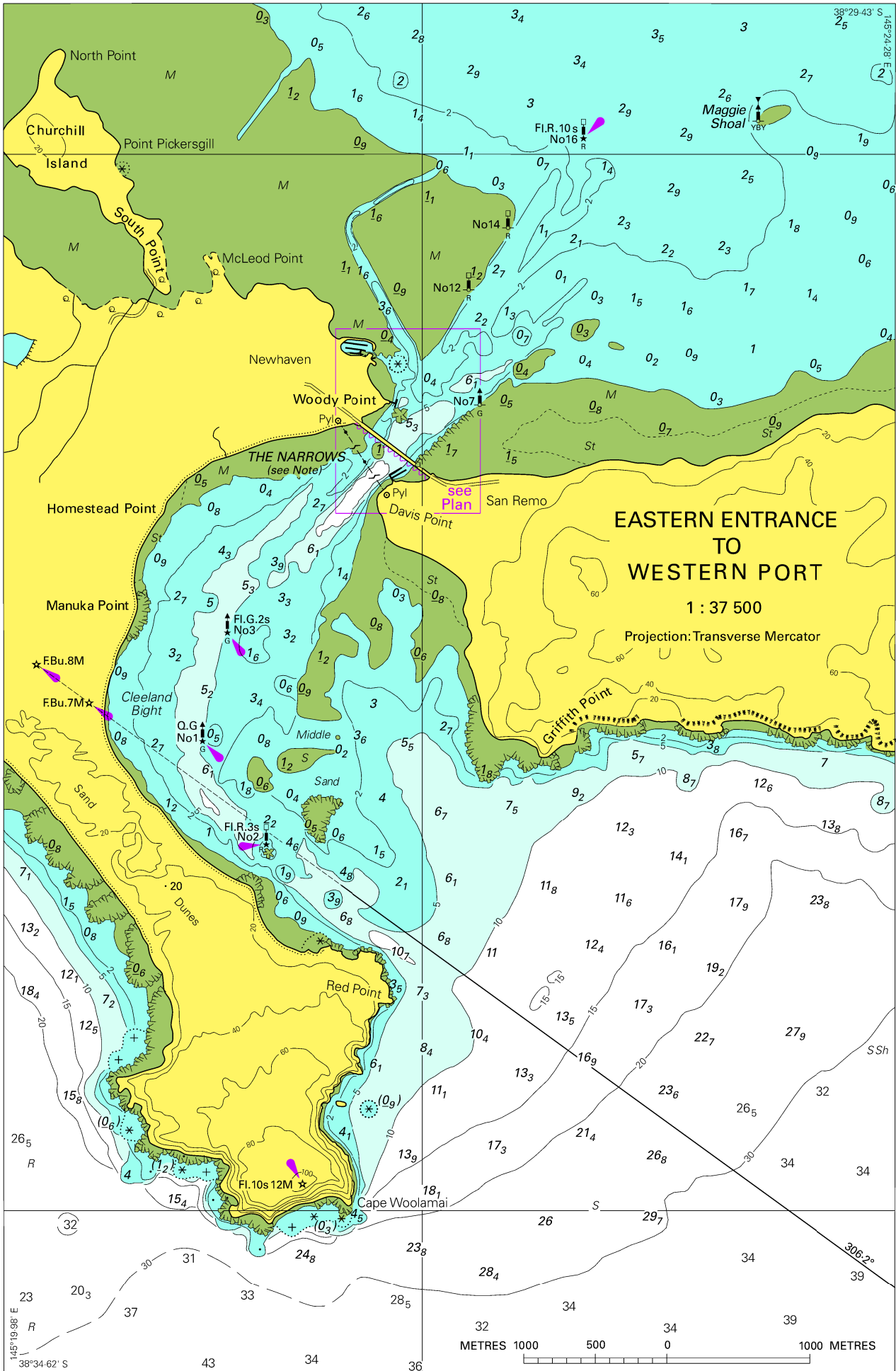
To accompany Australian Notice to Mariners 609/2017



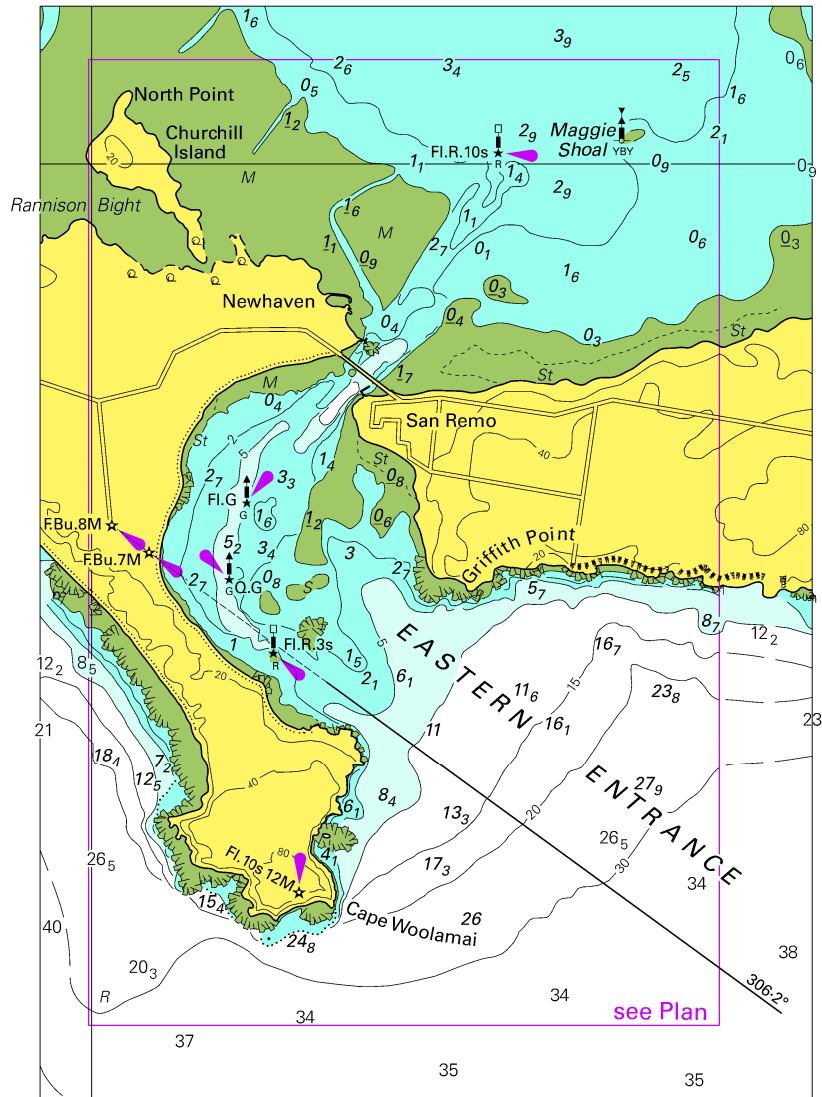
© Commonwealth of Australia 2017

Block C for Chart Aus 150

(101.7 x 129.5mm)



To accompany Australian Notice to Mariners 609/2017



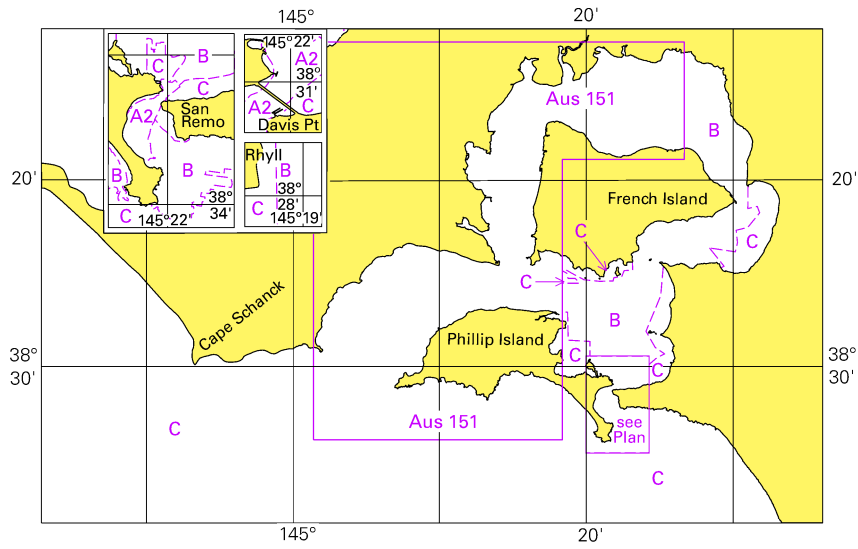
© Commonwealth of Australia 2017

Block A for Chart Aus 150

(102.1 x 144.4mm)

To accompany Australian Notice to Mariners 609/2017

Zone of Confidence (ZOC) Diagram



© Commonwealth of Australia 2017

Block D for Chart Aus 150

(103.3 x 65.3mm)