



2 June 2017

Edition 11

Australian Notices to Mariners are the authority for correcting Australian Charts and Publications

AUSTRALIAN NOTICES TO MARINERS

Notices 398 - 440



Published fortnightly by the Australian Hydrographic Service

Commodore B.K. BRACE RAN
Hydrographer of Australia

SECTIONS.

- I. **Australian Notices to Mariners, including blocks and notes.**
- II. **Hydrographic Reports.**
- III. **Navigational Warnings.**

SUPPLEMENTS.

- I. **Tracings**
- II. **Cumulative List of Australian Notices to Mariners.**
- III. **Cumulative List of Temporary and Preliminary Australian Notices to Mariners.**
- IV. **Temporary and Preliminary Notices in force.**
- V. **Amendments to Admiralty List of Lights and Fog Signals (Vol K), Radio Signals (NP 281(2), 282, 283(2), 285, 286(4)) and Sailing Directions (NP 9, 13, 14, 15, 33, 34, 35, 36, 39, 44, 51, 60, 61, 62, 100, 136).**

© Commonwealth of Australia 2017

This work is copyright. Apart from any use permitted under the Copyright Act 1968, no part may be reproduced by any process, adapted, communicated or commercially exploited without prior written permission from The Commonwealth represented by the Australian Hydrographic Service.

IMPORTANT NOTICE

This edition of Notices to Mariners includes all significant information affecting AHS products which the AHS has become aware of since the last edition. All reasonable efforts have been made to ensure the accuracy and completeness of the information, including third party information, on which these updates are based. The AHS regards third parties from which it receives information as reliable, however the AHS cannot verify all such information and errors may therefore exist. The AHS does not accept liability for errors in third party information.

GENERAL INSTRUCTIONS

The substance of these notices should be inserted on the charts affected.

Bearings are referred to the true compass and are reckoned clockwise from North; those relating to lights are given as seen by an observer from seaward.

Positions quoted in notices relate to WGS84 which is the horizontal datum for all charts produced by the Australian Hydrographic Service.

The range quoted for a light is its nominal range.

Depths are with reference to the chart datum of each chart. Heights are above mean high water springs or mean higher high water, as appropriate.

The capital letter (P) or (T) after the number of any notice denotes a preliminary or temporary notice respectively, which are contained separately at the end of the permanent notices.

A star (*) adjacent to the number of a notice indicates that the notice is based on original information.

REPORTING OF DANGERS

Mariners are particularly requested to notify the AUSTRALIAN HYDROGRAPHIC SERVICE, Locked Bag 8801 Wollongong, NSW 2500 (Fax 02-4223 6599, e-mail datacentre@hydro.gov.au or, alternatively by filling in and submitting the [Hydrographic Notes](#) forms located on the web site – www.hydro.gov.au), immediately on the discovery of new dangers or suspected dangers to navigation. For changes or defects in aids to navigation notify AusSAR (Fax 02-6230 6868 or email rccaus@amsa.gov.au).

AUTHORISED USE

Copies of Australian notices are available free of charge from the Australian Hydrographic Service (AHS) website (www.hydro.gov.au) and through the eNotices (email) service (www.hydro.gov.au/enotices/enotices.htm).

Individual Notices may be copied for the purpose of inserting Notice substance on official charts and publications. Paper copies may be printed by chart agents and distributed to customers on a cost recovery basis. Participating chart agents are listed on the AHS website as providing a 'Paper Notices to Mariners' service (www.hydro.gov.au/webapps/jsp/agents/agents-list.jsp). Copies of the notices may not be sold for profit without prior written agreement.

NUMERICAL INDEX OF NOTICES TO MARINERS

Edition No 11

Notices	Aus Chart, INT Chart, ENC Cell, AHP, BA Pubs
398	Aus 4060, 4074, 4601, 4643, 4644, INT 60, 74, 601, 643, 644
399	Aus 4060, 4604, INT 60, 604
400	Aus 264
401	Aus 299
402	Aus 490, 819, 820
403	Aus 367, 822, 823, 4060, 4602, 4620, 4621, 4635, INT 60, 602, 620, 621, 635
404	Aus 256
405	Aus 293, 299
406	Aus 15
407	Aus 315, 4721, INT 721
408	Aus 68
409	Aus 119, 762
410	Aus 64, 69
411	Aus 777
412	Aus 357, 4644, INT 644
413	Aus 793, 794
414	Aus 173
415	Aus 169
416	Aus 171, 174, 766
417(T)	Aus 256, 827, 4620, INT 620
418(T)	Aus 252, 253
419(T)	Aus 252
420(T)	Aus 235
421(T)	Aus 236
422(T)	Aus 236
423(T)	Aus 236
424(T)	Aus 256, 827
425(T)	Aus 260, 261, 367, 822
426(T)	Aus 269
427(T)	Aus 256
428(T)	Aus 379, 386, 387, 392, 393, 396, 397, 398, 399, 507, 508, 509, 512, 513, 514, 515, 516, 517, 518, 519, 520, 521, 522, 523, 539, 543, 545, 546, 547, 548, 554, 628, 631, 635, 637, 642, 643, 644, 653, 665, 666, 668, 669, 670, 671, 672, 673, 674, 677, 678, 679, 680, 683, 684, 4620, 4621, 4622, INT 620, 621, 622
429(T)	Aus 316, 724, 725
430(T)	Aus 26, 28
431(T)	Aus 112, 113
432(T)	Aus 81, 332, 751
433(T)	Aus 328, 329, 744, 4723, 4725, INT 723, 725
434(T)	Aus 55, 740
435(T)	Aus 112
436(T)	Aus 485, 780
437(T)	Aus 139, 781
438(P)	Aus 132, 778
439(T)	Aus 154
440(T)	Aus 177, 792

NUMERICAL INDEX OF CHARTS AFFECTED

Edition No 11

Aus Chart	Notices	Aus Chart	Notices
Aus 15	406	Aus 515	428(T)
Aus 26	430(T)	Aus 516	428(T)
Aus 28	430(T)	Aus 517	428(T)
Aus 55	434(T)	Aus 518	428(T)
Aus 64	410	Aus 519	428(T)
Aus 68	408	Aus 520	428(T)
Aus 69	410	Aus 521	428(T)
Aus 81	432(T)	Aus 522	428(T)
Aus 112	431(T), 435(T)	Aus 523	428(T)
Aus 113	431(T)	Aus 539	428(T)
Aus 119	409	Aus 543	428(T)
Aus 132	438(P)	Aus 545	428(T)
Aus 139	437(T)	Aus 546	428(T)
Aus 154	439(T)	Aus 547	428(T)
Aus 169	415	Aus 548	428(T)
Aus 171	416	Aus 554	428(T)
Aus 173	414	Aus 628	428(T)
Aus 174	416	Aus 631	428(T)
Aus 177	440(T)	Aus 635	428(T)
Aus 235	420(T)	Aus 637	428(T)
Aus 236	421(T), 422(T), 423(T)	Aus 642	428(T)
Aus 252	418(T), 419(T)	Aus 643	428(T)
Aus 253	418(T)	Aus 644	428(T)
Aus 256	404, 417(T), 424(T), 427(T)	Aus 653	428(T)
Aus 260	425(T)	Aus 665	428(T)
Aus 261	425(T)	Aus 666	428(T)
Aus 264	400	Aus 668	428(T)
Aus 269	426(T)	Aus 669	428(T)
Aus 293	405	Aus 670	428(T)
Aus 299	401, 405	Aus 671	428(T)
Aus 315	407	Aus 672	428(T)
Aus 316	429(T)	Aus 673	428(T)
Aus 328	433(T)	Aus 674	428(T)
Aus 329	433(T)	Aus 677	428(T)
Aus 332	432(T)	Aus 678	428(T)
Aus 357	412	Aus 679	428(T)
Aus 367	403, 425(T)	Aus 680	428(T)
Aus 379	428(T)	Aus 683	428(T)
Aus 386	428(T)	Aus 684	428(T)
Aus 387	428(T)	Aus 724	429(T)
Aus 392	428(T)	Aus 725	429(T)
Aus 393	428(T)	Aus 740	434(T)
Aus 396	428(T)	Aus 744	433(T)
Aus 397	428(T)	Aus 751	432(T)
Aus 398	428(T)	Aus 762	409
Aus 399	428(T)	Aus 766	416
Aus 485	436(T)	Aus 777	411
Aus 490	402	Aus 778	438(P)
Aus 507	428(T)	Aus 780	436(T)
Aus 508	428(T)	Aus 781	437(T)
Aus 509	428(T)	Aus 792	440(T)
Aus 512	428(T)	Aus 793	413
Aus 513	428(T)	Aus 794	413
Aus 514	428(T)	Aus 819	402

Aus Chart	Notices
Aus 820	402
Aus 822	403, 425(T)
Aus 823	403
Aus 827	417(T), 424(T)
Aus 4060	398, 399, 403
Aus 4074	398
Aus 4601	398
Aus 4602	403
Aus 4604	399
Aus 4620	403, 417(T), 428(T)
Aus 4621	403, 428(T)
Aus 4622	428(T)
Aus 4635	403
Aus 4643	398
Aus 4644	398, 412
Aus 4721	407
Aus 4723	433(T)
Aus 4725	433(T)

INT Chart	Notices
INT 60	398, 399, 403
INT 74	398
INT 601	398
INT 602	403
INT 604	399
INT 620	403, 417(T), 428(T)
INT 621	403, 428(T)
INT 622	428(T)
INT 635	403
INT 643	398
INT 644	398, 412
INT 721	407
INT 723	433(T)
INT 725	433(T)

398 AUSTRALIA - TASMAN SEA - Cascade Guyot - Depths northeastwards

Geoscience Australia

Aus 4060 (INT 60) [358/2017]

Insert	depth, 3827m, enclosed by contour	39° 31'.6 S	158° 29'.3 E
--------	-----------------------------------	-------------	--------------

Replace	depth, 2163m, and enclosing danger circle with depth, 1424m, enclosed by contour	42° 55'.7 S	151° 30'.4 E
---------	--	-------------	--------------

Aus 4074 (INT 74) [324/2017]

Insert	depth, 3827m, enclosed by contour	39° 31'.6 S	158° 29'.3 E
--------	-----------------------------------	-------------	--------------

Replace	depth, 2163m, and enclosing danger circle with depth, 1424m, enclosed by contour	42° 55'.7 S	151° 30'.4 E
---------	--	-------------	--------------

Aus 4601 (INT 601) [368/2017]

Insert	depth, 3881m, enclosed by contour	42° 01'.8 S	151° 45'.0 E
	depth, 3796m, enclosed by contour	41° 49'.9 S	152° 21'.7 E
	depth, 3827m, enclosed by contour	39° 31'.6 S	158° 29'.3 E

Replace	depth, 2163m, and enclosing danger circle with depth, 1424m, enclosed by contour	42° 55'.7 S	151° 30'.4 E
---------	--	-------------	--------------

Aus 4643 (INT 643) [196/2017]

Insert	depth, 3827m, enclosed by contour	39° 31'.6 S	158° 29'.3 E
	depth, 3856m, enclosed by contour	39° 28'.1 S	158° 46'.0 E
	contour, between	39° 31'.7 S	158° 58'.2 E
		39° 27'.8 S	158° 59'.0 E

Delete	contour, between depth, 4213m	39° 31'.7 S	158° 58'.2 E
		39° 30'.0 S	159° 05'.2 E
		39° 27'.8 S	158° 59'.5 E

Aus 4644 (INT 644) [368/2017]

Insert	depth, 1424m, enclosed by contour	42° 55'.7 S	151° 30'.4 E
	depth, 3881m, enclosed by contour	42° 01'.8 S	151° 45'.0 E
	depth, 3796m, enclosed by contour	41° 49'.9 S	152° 21'.7 E

Delete	depth, 3634m	42° 57'.0 S	151° 26'.0 E
--------	--------------	-------------	--------------

399 PACIFIC OCEAN - Melanesian Basin - Depth

Cooperative Institute for Research in Environmental Sciences (CIRES) and NOAA

Aus 4060 (INT 60) [398/2017]

Insert	depth, 2808m, enclose by contour	4° 36'.3 S	170° 37'.1 E
--------	----------------------------------	------------	--------------

Aus 4604 (INT 604) [1104/2015]

Insert	depth, 2808m, enclose by contour	4° 36'.3 S	170° 37'.1 E
--------	----------------------------------	------------	--------------

Delete	depth, 3403m	4° 36'.0 S	170° 23'.0 E
--------	--------------	------------	--------------

400 AUSTRALIA - QUEENSLAND - Cairns - Smiths Creek - Wreck

Maritime Safety Queensland Notice 1021(T)/2011

Aus 264 [1198/2016]

Move	wreck	16° 57'.51 S	145° 46'.26 E
	to	16° 57'.515 S	145° 46'.256 E

401 AUSTRALIA - QUEENSLAND - Ellis Channel - Anchoring prohibited areas

Maritime Safety Queensland Notice 183/2017

Aus 299 [316/2017]

Insert	anchoring prohibited limit, between	10° 35'.154 S	142° 13'.317 E
		10° 35'.189 S	142° 13'.156 E
		10° 35'.399 S	142° 13'.156 E
		10° 35'.349 S	142° 13'.500 E
		10° 35'.232 S	142° 13'.500 E
		10° 35'.154 S	142° 13'.317 E
	anchoring prohibited limit, between	10° 35'.268 S	142° 14'.932 E
		10° 35'.199 S	142° 14'.845 E
		10° 34'.916 S	142° 14'.983 E
		10° 35'.011 S	142° 14'.773 E
		10° 35'.449 S	142° 14'.550 E
		10° 35'.549 S	142° 14'.700 E
		10° 35'.268 S	142° 14'.932 E
	dashed line, between	10° 35'.169 S	142° 13'.365 E
		10° 35'.205 S	142° 13'.450 E
Delete	dashed line, between	10° 35'.17 S	142° 13'.37 E
		10° 35'.23 S	142° 13'.39 E
		10° 35'.21 S	142° 13'.45 E

402 AUSTRALIA - QUEENSLAND - Keppel Bay - Chart limits; wreck

Australian Hydrographic Service

Aus 490 [1238/2016]

Replace	depth, 20m, with depth, 28 _g m	23° 12'.2 S	151° 15'.3 E
---------	---	-------------	--------------

Aus 819 [806/2016]

Insert	magenta limits, with legend <i>Aus 247</i> in SE corner, between	23° 46'.00 S	150° 45'.05 E
		23° 46'.00 S	151° 15'.20 E
		23° 08'.67 S	151° 15'.20 E
	depth, 28 _g m, enclosed by danger circle with legend, <i>Wk</i>	23° 12'.15 S	151° 15'.26 E
Delete	magenta limits, with legend <i>Aus 247</i> , centred on	23° 21'.0 S	151° 05'.0 E
	safe clearance depth, 20m, and enclosing danger circle with legend, <i>Wk</i>	23° 12'.2 S	151° 15'.3 E

Aus 820 [635/2016]

Insert	magenta limits, with legend <i>Aus 247</i> in NE corner, between	23° 18'.53 S	150° 44'.60 E
		22° 57'.60 S	150° 44'.60 E
		22° 57'.60 S	151° 15'.20 E
		23° 18'.53 S	151° 15'.20 E
Delete	magenta limits, with legend <i>Aus 247</i> , centred on	23° 15'.0 S	151° 00'.0 E

403 AUSTRALIA - QUEENSLAND - Northumberland Islands - Pine Islets - Light

Australian Maritime Safety Authority Auscoast Warning 84/2017

Aus 367 [337/2016]

Delete light and sector with legend, Obscd 21° 39'.5 S 150° 13'.1 E

Aus 822 [272/2015]

Delete light and sector with legend, W 21° 39'.5 S 150° 13'.1 E

Aus 823 [955/2016]

Delete light and sector with legend, Arc of vis 21° 39'.5 S 150° 13'.1 E

Aus 4060 (INT 60) [399/2017]

Delete light 21° 39'.5 S 150° 13'.1 E

Aus 4602 (INT 602) [358/2017]

Delete light 21° 39'.5 S 150° 13'.1 E

Aus 4620 (INT 620) [49/2017]

Delete light 21° 39'.5 S 150° 13'.1 E

Aus 4621 (INT 621) [50/2017]

Delete light 21° 39'.5 S 150° 13'.1 E

Aus 4635 (INT 635) [50/2017]

Delete light 21° 39'.5 S 150° 13'.1 E

404* AUSTRALIA - QUEENSLAND - Townsville - Cleveland Bay - Light buoys

Maritime Safety Queensland Notice 74(T)/2017

Aus 256 [155/2017]Insert special spar light buoy, *Fl.Y.4s*, without topmark 19° 12'.79 S 146° 58'.30 Especial spar light buoy, *Fl.Y.4s*, without topmark 19° 14'.99 S 146° 54'.50 EDelete depth, 2₉m 19° 12'.8 S 146° 58'.3 E**405 AUSTRALIA - TORRES STRAIT - Madge Reef - Nav aids**

Maritime Safety Queensland Notice 173/2017

Aus 293 [316/2017]Amend light to *F & Iso.WRG* 10° 36'.18 S 142° 14'.40 E

Delete light beacon 10° 35'.71 S 142° 13'.24 E

Aus 299 [401/2017]Replace light beacon with light, *F & Iso.WRG* 10° 36'.18 S 142° 14'.40 E

Delete light beacon 10° 35'.71 S 142° 13'.24 E

406 AUSTRALIA - NORTHERN TERRITORY - Gove Harbour - Mooring buoys

Rio Tinto

Aus 15 (plan, Gove Harbour) [242/2017]

Move mooring buoy 12° 12'.39 S 136° 41'.24 E

to 12° 12'.587 S 136° 41'.191 E

Aus 15 (plan, Gove Inner Harbour) [242/2017]

Move mooring buoy 12° 12'.33 S 136° 41'.19 E

to 12° 12'.340 S 136° 41'.182 E

mooring buoy 12° 12'.39 S 136° 41'.24 E

to 12° 12'.587 S 136° 41'.191 E

407 AUSTRALIA - TIMOR SEA - Van Cloon Shoal - Depths eastwardsHMAS *Melville***Aus 315 [1201/2016]**

Insert	depth, 84m, enclosed by contour	12° 36'.32 S	127° 59'.70 E
	depth, 100m, enclosed by contour	12° 42'.65 S	127° 56'.57 E

Aus 4721 (INT 721) [51/2017]

Insert	depth, 84m, enclosed by contour	12° 36'.3 S	127° 59'.7 E
	depth, 100m, enclosed by contour	12° 42'.7 S	127° 56'.6 E

408 AUSTRALIA - WESTERN AUSTRALIA - Cape Preston - Scientific instruments

MetOcean Engineers

Aus 68 (plan, Cape Preston) [58/2017]

Insert	depth, 12 _g m, enclosed by danger circle with legend, ODAS	20° 49'.421 S	116° 11'.224 E
	depth, 10 _g m, enclosed by danger circle with legend, ODAS	20° 49'.655 S	116° 11'.098 E
	depth, 8 _g m, enclosed by danger circle with legend, ODAS	20° 49'.562 S	116° 11'.390 E
Delete	depth, 12 _g m	20° 49'.43 S	116° 11'.23 E
	depth, 8 _g m	20° 49'.58 S	116° 11'.40 E

409 AUSTRALIA - WESTERN AUSTRALIA - Esperance Bay - Port limits

Australian Hydrographic Service

Aus 119 [1247/2016]

Insert	accompanying block A	33° 56'.0 S	121° 49'.0 E
	accompanying block B	33° 57'.0 S	121° 59'.0 E

Aus 762 [1247/2016]

Insert	accompanying block	33° 56'.0 S	121° 54'.0 E
--------	--------------------	-------------	--------------

410 AUSTRALIA - WESTERN AUSTRALIA - Port of Ashburton - Wreck

WA Dredging

Aus 64 [NC 4/11/2016]

Insert	depth, 2 _g m, enclosed by danger circle with legend, Wk	21° 40'.64 S	115° 01'.02 E
--------	--	--------------	---------------

Aus 69 (plan, Port of Ashburton) [1143/2016]

Insert	depth, 2 _g m, enclosed by danger circle with legend, Wk	21° 40'.637 S	115° 01'.020 E
--------	--	---------------	----------------

411 AUSTRALIA - SOUTH AUSTRALIA - Cape Elizabeth - Light beacon

Department of Planning, Transport and Infrastructure SA

Aus 777 [651/2016]

Replace	beacon with west cardinal light beacon, Q(9)15s, with topmark	34° 07'.7 S	137° 26'.3 E
---------	---	-------------	--------------

412 AUSTRALIA - VICTORIA - Point Hicks - Well southwestwards

Cooper Energy

Aus 357 [820/2016]

Insert	depth, 123m, enclosed by danger circle with legend, Well	38° 06'.22 S	149° 00'.56 E
--------	--	--------------	---------------

Aus 4644 (INT 644) [398/2017]

Insert	depth, 123m, enclosed by danger circle with legend, Well	38° 06'.2 S	149° 00'.6 E
--------	--	-------------	--------------

Delete	depth, 126m	38° 05'.0 S	149° 02'.1 E
--------	-------------	-------------	--------------

413 AUSTRALIA - TASMANIA - Abeona Head - Rock

A Boon

Aus 793 [880/2016]

Insert	rock awash enclosed by danger circle, with legend <i>Rep (2017)</i>	43° 30'.25 S	146° 09'.33 E
--------	---	--------------	---------------

Aus 794 [880/2016]

Insert	rock awash enclosed by danger circle, with legend <i>Rep (2017)</i>	43° 30'.25 S	146° 09'.33 E
--------	---	--------------	---------------

414 AUSTRALIA - TASMANIA - D'Entrecasteaux Channel - Port Esperance - Hawkers Point - Light beacon

Marine and Safety Tasmania Notice M166/2016

Aus 173 [1179/2016]

Insert	light beacon, <i>F. Y.</i> , without topmark	43° 20'.14 S	147° 00'.93 E
--------	--	--------------	---------------

415 AUSTRALIA - TASMANIA - Georges Bay - The Barway - Buoy restored, topmark*Former Notice - 122(T)/2017 is cancelled*

Marine and Safety Tasmania Notice M62/2017

Aus 169 (plan, Georges Bay) [766/2016]

Insert	upright cross topmark	41° 16'.24 S	148° 20'.07 E
--------	-----------------------	--------------	---------------

416 AUSTRALIA - TASMANIA - Wineglass Bay to Port Arthur - Anchorages; swing basin

Tasmanian Ports Corporation

Aus 171 [766/2016]

Insert	anchor berth, desig 1, with 556m radius swinging circle	42° 56'.1 S	147° 23'.3 E
	anchor berth, desig 2, with 556m radius swinging circle	42° 56'.9 S	147° 23'.1 E
	anchor berth, desig 3, with 556m radius swinging circle	42° 57'.7 S	147° 22'.9 E
	accompanying note	43° 06'.1 S	147° 54'.9 E
	legend, <i>Cruise Ship Area (see Note)</i>	42° 57'.3 S	147° 23'.6 E

Aus 174 (plan, Port Arthur) [1110/2015]

Insert	anchorage area, with 648m radius, with legend <i>Cruise Ship Area (see Note)</i>	43° 08'.45 S	147° 52'.50 E
	accompanying note	43° 06'.8 S	147° 54'.5 E

Aus 766 [105/2017]

Insert	anchorage area, with 0.2M radius, with legend <i>Cruise Ship Area (see Note)</i>	42° 10'.0 S	148° 18'.5 E
	accompanying note	41° 42'.5 S	148° 11'.0 E

417(T)/2017 AUSTRALIA - QUEENSLAND - Cape Cleveland - Light altered

Australian Maritime Safety Authority Auscoast Warning 80/2017

The light, *Fl.WR.7-5s 64m 15/12M* (19° 10'.98 S 147° 00'.93 E), has been altered to *Fl.WR.7-5s 64m 10/6M* with sectors White 299° - 259° and Red 259° - 299°.

Chart temporarily affected - Aus 256 - Aus 827 - Aus 4620 (INT 620)

418(T)/2017 AUSTRALIA - QUEENSLAND - Daydream Island - Lights unlit; light buoys established

Maritime Safety Queensland Notice 179(T)/2017

The leading lights, *2F.Bu.5M* (20° 15'.10 S 148° 48'.87 E), are unlit.

A starboard lateral light buoy, *Fl.G.1-3s*, exists in positions 20° 14'.61 S 148° 49'.75 E.

A port lateral light buoy, *Fl.R.1-3s*, exists in positions 20° 14'.67 S 148° 49'.77 E.

Chart temporarily affected - Aus 252 - Aus 253

419(T)/2017 AUSTRALIA - QUEENSLAND - Hook Island - Nara Inlet - Light beacon destroyed; light buoy established

Former Notice - 374(T)/2017 is cancelled

Maritime Safety Queensland Notice 181(T)/2017

The light beacon, *Fl.R.3s* (20° 09'.86 S 148° 54'.02 E), has been destroyed; a port lateral light buoy, *Fl.R.3s*, exists in situ.

Chart temporarily affected - Aus 252

420(T)/2017 AUSTRALIA - QUEENSLAND - Mooloolaba - Shoaling; dredging operations

Maritime Safety Queensland Notice 194(T)/2017

A shoal patch exists from the end of the eastern breakwater (26° 40'.74 S 153° 07'.95 E) extending in a westerly direction towards the centreline of the channel with a least depth of 0.6m in the vicinity of position 26° 40'.76 S 153° 07'.92 E.

The dredge *Saibai* is conducting dredging operations in the entrance channel. The dredge will display appropriate lights and shapes and will monitor VHF Ch 12, Ch 16 and Ch 73. A floating pipeline exists from the dredge.

Mariners are advised to navigate with caution in the area.

Chart temporarily affected - Aus 235

421(T)/2017 AUSTRALIA - QUEENSLAND - Moreton Bay - Pelican Banks - Light beacon destroyed

Maritime Safety Queensland Notice 171(T)/2017

The starboard lateral light beacon, *Fl.G.3s* (27° 35'.18 S 153° 22'.84 E), has been destroyed.

Chart temporarily affected - Aus 236

422(T)/2017 AUSTRALIA - QUEENSLAND - Moreton Bay - Tangalooma - Light unlit

Maritime Safety Queensland Notice 186(T)/2017

The front lead light, *Q.Bu* (27° 10'.43 S 153° 22'.45 E), is unlit.

Chart temporarily affected - Aus 236

423(T)/2017 AUSTRALIA - QUEENSLAND - Moreton Bay - Ship to ship transfer

Maritime Safety Queensland Notice 190/2017

Ship to ship transfer of LPG will be conducted at STS1 anchorage (27° 17'.17 S 153° 16'.57 E).

A 0.54M radius exclusion zone exists around transfer operations.

Chart temporarily affected - Aus 236

424(T)/2017 AUSTRALIA - QUEENSLAND - Rattlesnake Island - Live firing completed

Former Notice - 329(T)/2017 is cancelled
 Maritime Safety Queensland Notice 138(T)/2017

Cancel this notice on receipt.

Chart formerly affected - Aus 256 - Aus 827

425(T)/2017 AUSTRALIA - QUEENSLAND - Shoalwater Bay - Live firing completed

Former Notice - 331(T)/2017 is cancelled
 Maritime Safety Queensland Notice 141(T)/2017

Cancel this notice on receipt.

Chart formerly affected - Aus 260 - Aus 261 - Aus 367 - Aus 822

426(T)/2017 AUSTRALIA - QUEENSLAND - Shute Harbour - Light beacons destroyed

Maritime Safety Queensland Notice 155(T)/2017, 180(T)/2017

The light beacon, *Fl.R.3s No10* (20° 17'.65 S 148° 47'.15 E), has been destroyed.

The light beacon, *Q.R No2* (20° 17'.50 S 148° 47'.98 E), has been destroyed; a port lateral buoy exists in situ.

Chart temporarily affected - Aus 269

427(T)/2017 AUSTRALIA - QUEENSLAND - Townsville - Sea Channel - Light beacon destroyed

Maritime Safety Queensland Notice 191(T)/2017

The port lateral light beacon, *Fl.R.4s S12* (19° 11'.23 S 146° 52'.22 E), has been destroyed; a special light buoy, *Fl(2)10s* exists in situ.

Chart temporarily affected - Aus 256

428(T)/2017 PAPUA NEW GUINEA - Solomon Sea - Seismic survey completed

Former Notice - 73(T)/2017 is cancelled
 Searcher Seismic Pty Ltd

Cancel this notice on receipt.

Chart formerly affected - Aus 379 - Aus 386 - Aus 387 - Aus 392 - Aus 393 - Aus 396 - Aus 397 - Aus 398 - Aus 399 - Aus 507 - Aus 508 - Aus 509 - Aus 512 - Aus 513 - Aus 514 - Aus 515 - Aus 516 - Aus 517 - Aus 518 - Aus 519 - Aus 520 - Aus 521 - Aus 522 - Aus 523 - Aus 539 - Aus 543 - Aus 545 - Aus 546 - Aus 547 - Aus 548 - Aus 554 - Aus 628 - Aus 631 - Aus 635 - Aus 637 - Aus 642 - Aus 643 - Aus 644 - Aus 653 - Aus 665 - Aus 666 - Aus 668 - Aus 669 - Aus 670 - Aus 671 - Aus 672 - Aus 673 - Aus 674 - Aus 677 - Aus 678 - Aus 679 - Aus 680 - Aus 683 - Aus 684 - Aus 4620 (INT 620) - Aus 4621 (INT 621) - Aus 4622 (INT 622)

429(T)/2017 AUSTRALIA - NORTHERN TERRITORY - Cape Ford to Cape Hay - Seismic survey

Origin Energy

MV *BGP Explorer*, with an 8000m towed array, is conducting seismic survey operations in an area bounded by the following positions:

14° 10'.5 S 129° 07'.7 E
 14° 10'.5 S 129° 24'.3 E
 13° 23'.7 S 129° 51'.6 E
 13° 23'.7 S 129° 07'.7 E.

Mariners are advised to navigate with caution in the area.

Chart temporarily affected - Aus 316 - Aus 724 - Aus 725

430(T)/2017 AUSTRALIA - NORTHERN TERRITORY - Darwin - South Shell Island - Light beacon relit*Former Notice* - 265(T)/2017 is cancelled

Department of Infrastructure, Planning and Logistics NT Notice 22(T)/2017

Cancel this notice on receipt.

Chart formerly affected - Aus 26 - Aus 28**431(T)/2017 AUSTRALIA - WESTERN AUSTRALIA - Fremantle - Light buoy withdrawn***Former Notice* - 841(T)/2016 is cancelled

Australian Hydrographic Service

Cancel this notice on receipt.

Chart formerly affected - Aus 112 - Aus 113**432(T)/2017 AUSTRALIA - WESTERN AUSTRALIA - Geraldton - Bluff Point - Light unlit**

Mid West Ports

The light, *F.WRG.17m 8M (F.WRG.4M Day)* (28° 44'.58 S 114° 37'.12 E), is unlit.**Chart temporarily affected - Aus 81 - Aus 332 - Aus 751****433(T)/2017 AUSTRALIA - WESTERN AUSTRALIA - Muiron Islands - Subsea works northwestwards completed***Former Notice* - 1089(T)/2016 is cancelled

Quadrant Energy

Cancel this notice on receipt.

Chart formerly affected - Aus 328 - Aus 329 - Aus 744 - Aus 4723 (INT 723) - Aus 4725 (INT 725)**434(T)/2017 AUSTRALIA - WESTERN AUSTRALIA - Port Walcott - Bass Pass - Light buoy restored***Former Notice* - 682(T)/2016 is cancelled

Australian Hydrographic Service

Cancel this notice on receipt.

Chart formerly affected - Aus 55 - Aus 740**435(T)/2017 AUSTRALIA - WESTERN AUSTRALIA - Rottnest Island - Point Clune - Light buoy restored***Former Notice* - 846(T)/2016 is cancelled

Australian Hydrographic Service

Cancel this notice on receipt.

Chart formerly affected - Aus 112**436(T)/2017 AUSTRALIA - SOUTH AUSTRALIA - Fleurieu Peninsula - Haycock Point - Hulk; prohibited area***Former Notice* - 619(T)/2016 is cancelled

Department of Planning, Transport and Infrastructure SA Notices 37/2014, 8/2017

A lit hulk, *Fl.Y.4s*, exists in position 35° 25'.23 S 138° 18'.33 E.

A prohibited area, marked by special buoys, exists in an area bounded by the following positions:

35° 25'.15 S 138° 18'.28 E

35° 25'.17 S 138° 18'.42 E

35° 25'.32 S 138° 18'.39 E

35° 25'.29 S 138° 18'.26 E.

Chart temporarily affected - Aus 485 - Aus 780

437(T)/2017 AUSTRALIA - SOUTH AUSTRALIA - Gulf St Vincent - Rogues Point - Artificial reef
Department of Planning, Transport and Infrastructure SA Notice 9/2017

An artificial reef is being developed in an area bounded by the following positions:

34° 30'.63 S 137° 53'.95 E
34° 30'.63 S 137° 54'.12 E
34° 30'.47 S 137° 54'.13 E
34° 30'.47 S 137° 53'.95 E.

Chart temporarily affected - Aus 139 - Aus 781

438(P)/2017 AUSTRALIA - SOUTH AUSTRALIA - Snapper Point to Douglas Bank - Shoaling
HydroSurvey Australia

Latest survey shows shoaler depths than those charted may exist between Snapper Point (32° 33'.96 S 137° 45'.89 E) and Douglas Bank (32° 49'.60 S 137° 49'.89 E).

Charts will updated in due course.

Chart which will be affected - Aus 132 - Aus 778

439(T)/2017 AUSTRALIA - VICTORIA - Port Phillip - Station Pier - Harbour works
Victorian Ports Corporation (Melbourne) Notice 150(T)/2017

Works associated with the remediation of the pier (37° 50'.70 S 144° 55'.85 E) are in progress.

The berths IW (37° 50'.67 S 144° 55'.85 E), OW (37° 50'.78 S 144° 55'.81 E) and OE (37° 50'.77 S 144° 55'.86 E) may be temporarily unavailable for access during the works.

Mariners are advised to navigate with caution in the area.

Chart temporarily affected - Aus 154

440(T)/2017 AUSTRALIA - TASMANIA - Macquarie Harbour - Scientific instruments
Marine and Safety Tasmania Notice M70/2017

Subsurface scientific instruments exist in positions 42° 13'.6 S 145° 19'.8 E and 42° 22'.0 S 145° 27'.9 E.

Chart temporarily affected - Aus 177 - Aus 792

HYDROGRAPHIC REPORTS

<i>Locality</i>	<i>Report</i>	<i>Ship/Authority</i>	<i>Observer</i>
TAS- New Harbour	Rock		A Boon

III

NAVIGATION WARNINGS

The Australian Hydrographic Service will no longer compile Section III of the Australian Notices to Mariners. For the most up to date navigation warnings please refer to:

AMSA Navigation Warnings

<http://amsa.gov.au/search-and-rescue/distress-and-safety-comms/msi/msi-email/index.asp>

New Zealand Notices to Mariners (Navarea XIV warnings)

<http://www.linz.govt.nz/sea/maritime-safety/notices-mariners>

To accompany Australian Notice to Mariners 416/2017

CRUISE SHIP AREA
Vessels must not anchor within or impede
access to this area without first receiving
clearance from Hobart VTS on:
VHF Ch12
T: 03 6380 3013
E: radio.room@tasports.com.au

Note for chart Aus 171

To accompany Australian Notice to Mariners 416/2017

CRUISE SHIP AREA
Vessels must not anchor within or impede
access to this area without first receiving
clearance from Hobart VTS on:
VHF Ch12
T: 03 6380 3013
E: radio.room@tasports.com.au

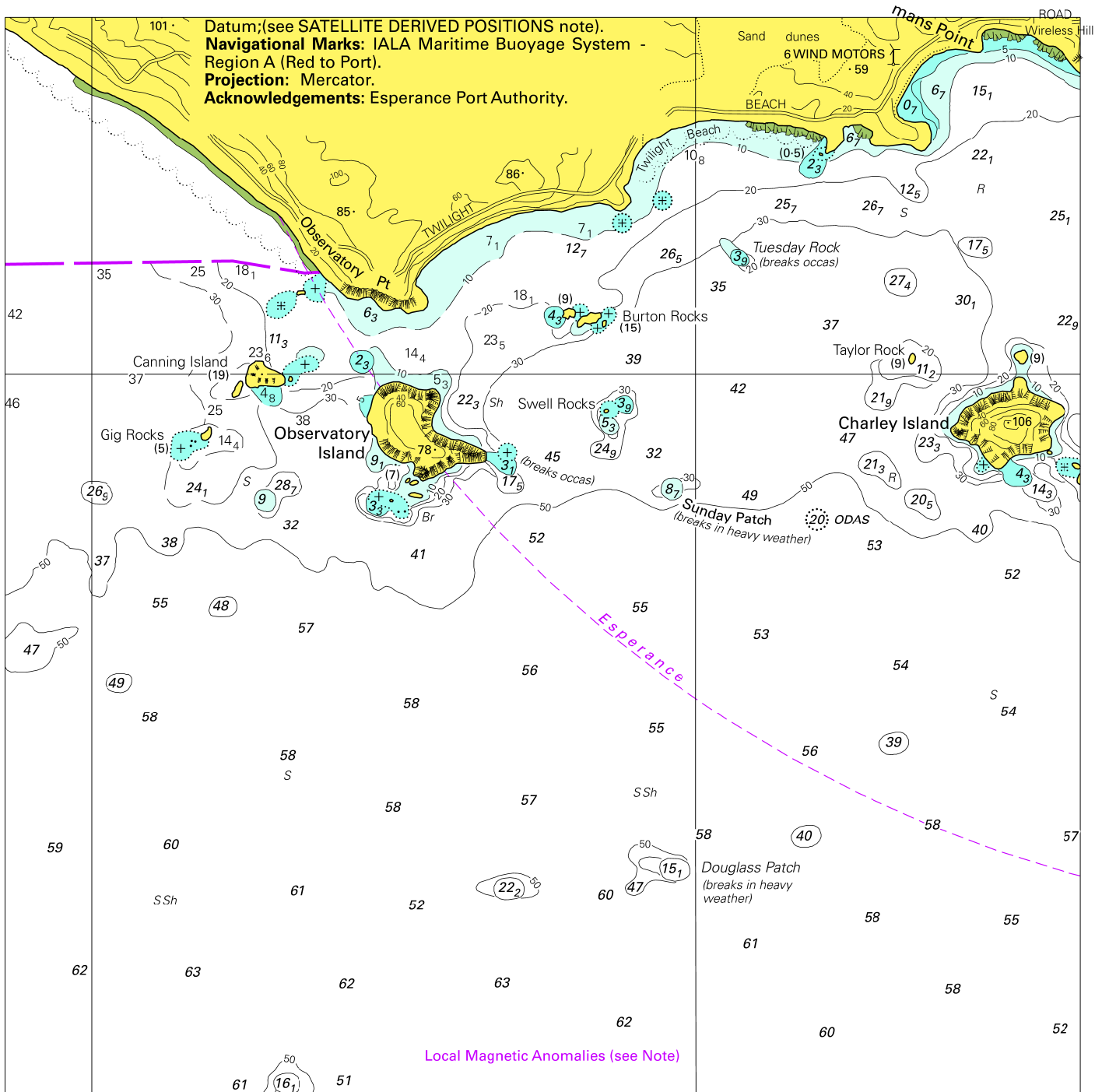
Note for chart Aus 766

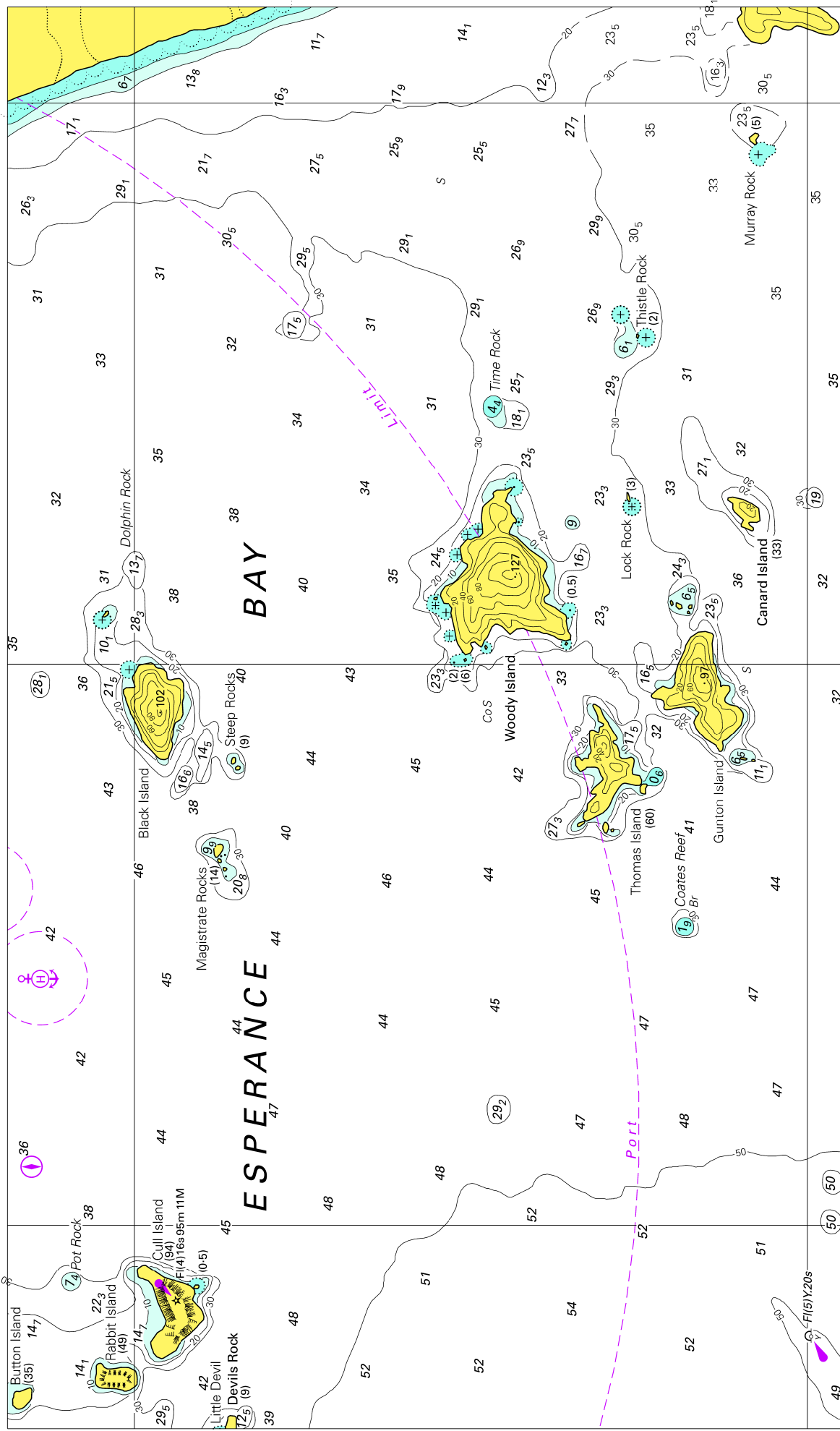
To accompany Australian Notice to Mariners 416/2017

CRUISE SHIP AREA
Vessels must not anchor within or impede
access to this area without first receiving
clearance from Hobart VTS on:
VHF Ch12
T: 03 6380 3013
E: radio.room@tasports.com.au

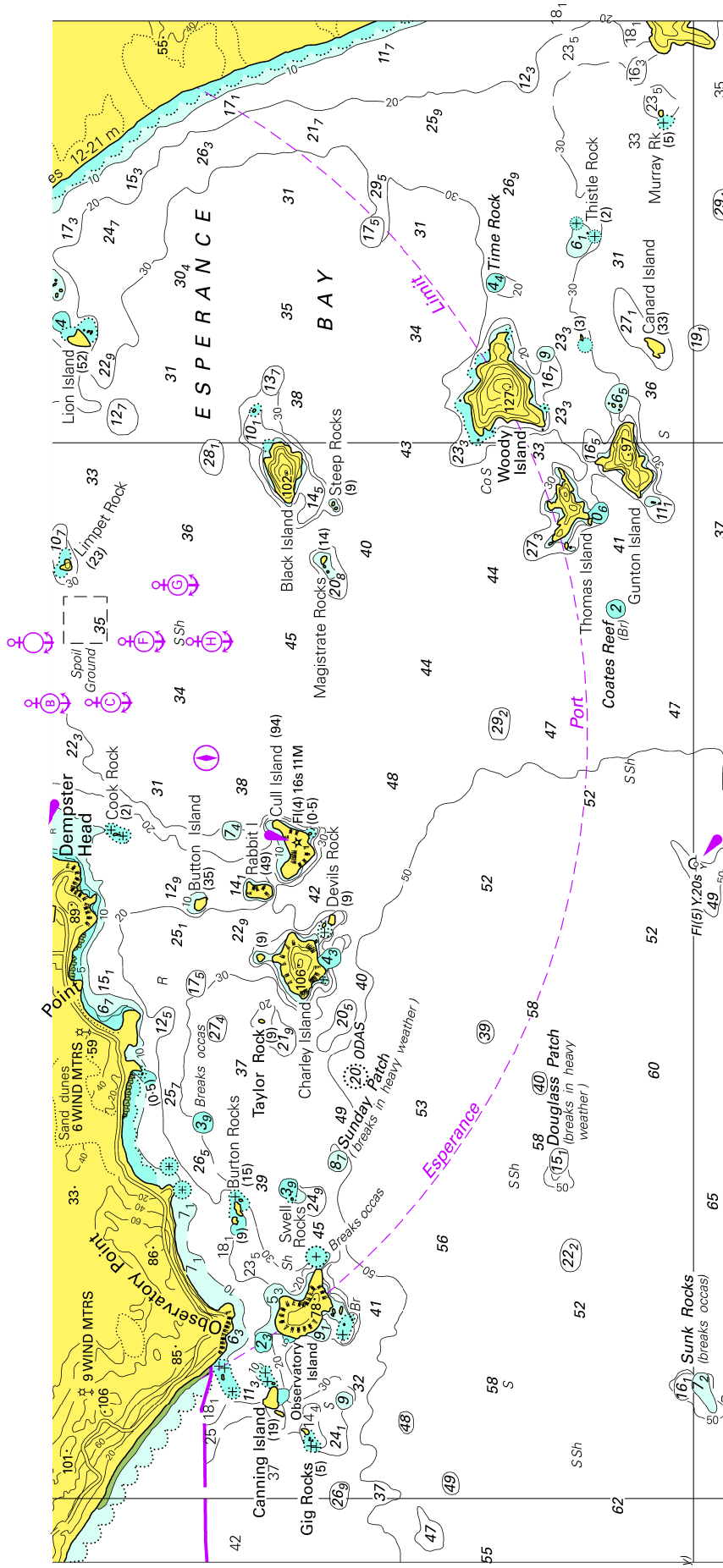
Note for chart Aus 174

To accompany Australian Notice to Mariners 409/2017





To accompany Australian Notice to Mariners 409/2017



Block for Chart Aus 762

© Commonwealth of Australia 2017