

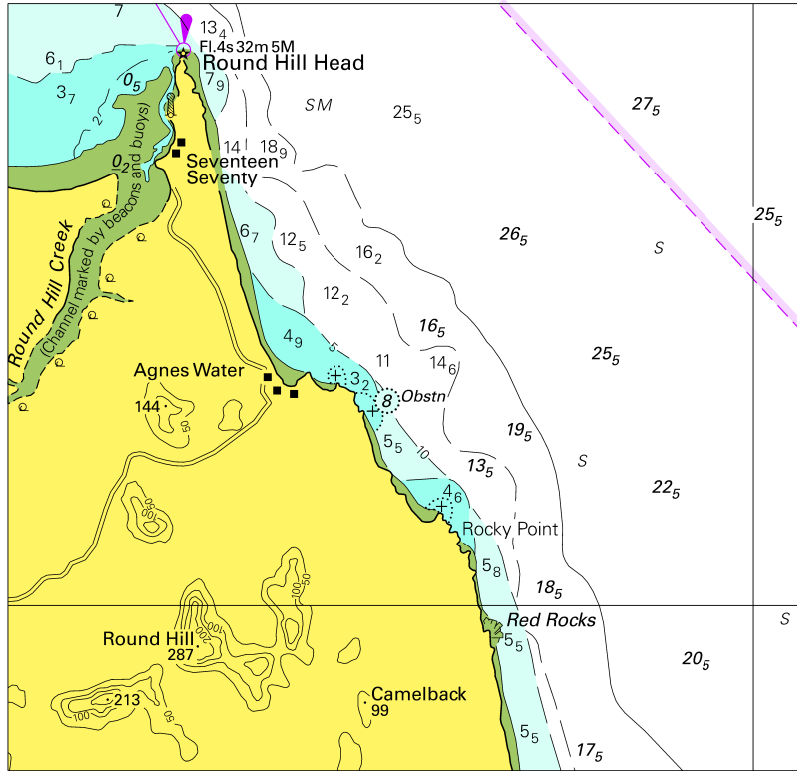
*To accompany Australian Notice to Mariners 320/2017*

ESTUARY AND RIVER ENTRANCES

The crossing of coastal bars and entry to rivers and estuaries is potentially dangerous. Bars and entrances are dynamic in nature, hence the depth and preferred approach may vary. Leading beacons and other navigational aids may not always indicate the best approach. If mariners are unsure of the condition at a particular bar or entrance, local information should be sought prior to crossing.

*Note for chart Aus 115*

To accompany Australian Notice to Mariners 317/2017



© Commonwealth of Australia 2017

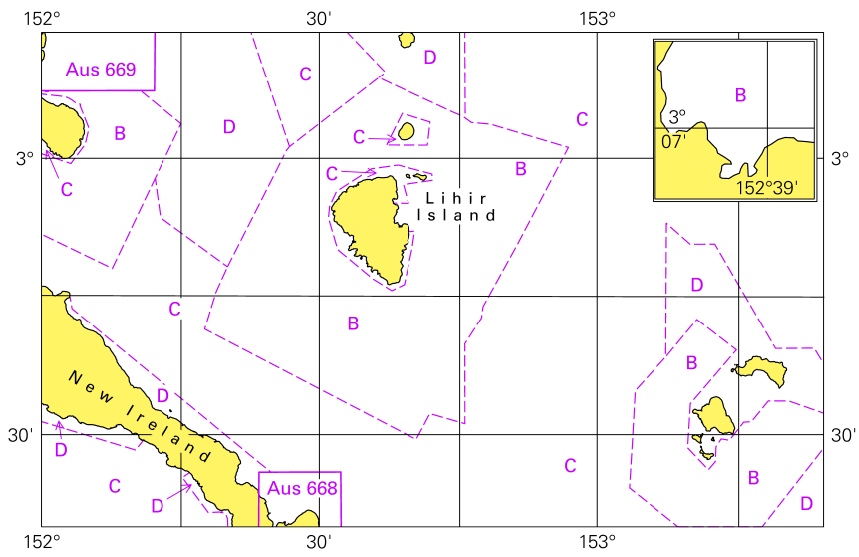
Block for Chart Aus 818

(105.2 x 101.5mm)



To accompany Australian Notice to Mariners 319/2017

Zone of Confidence (ZOC) Diagram



Block for Chart Aus 539

© Commonwealth of Australia 2017