

To accompany Australian Notice to Mariners 250/2017

PILOT

Inbound vessels which require a pilot must not enter Port limits without a pilot on board.

Note for chart Aus 163

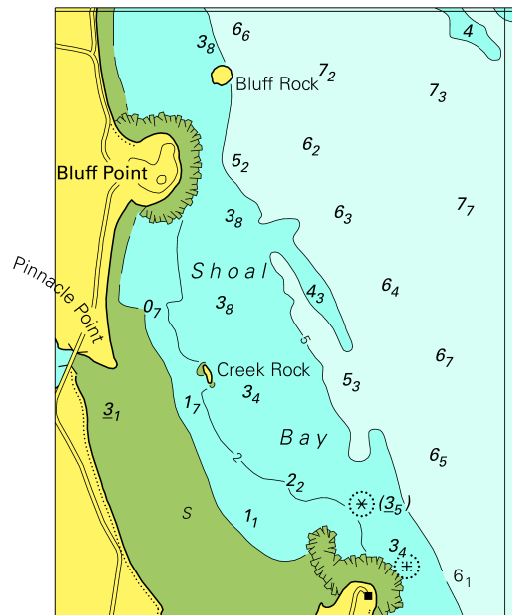
To accompany Australian Notice to Mariners 250/2017

PILOT

Vessels requiring a pilot to enter the following ports should not proceed south of latitude: Port Dalrymple 41° 00' S, Devonport 41° 07' S. At Burnie inbound vessels which require a pilot must not enter Port limits without a pilot on board.

Note for chart Aus 799

To accompany Australian Notice to Mariners 244/2017

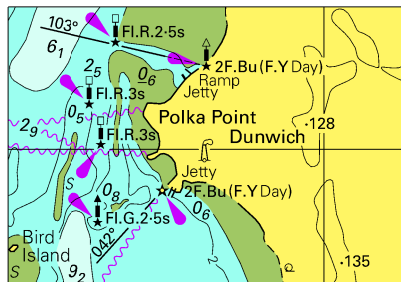


© Commonwealth of Australia 2017

Block A for Chart Aus 247

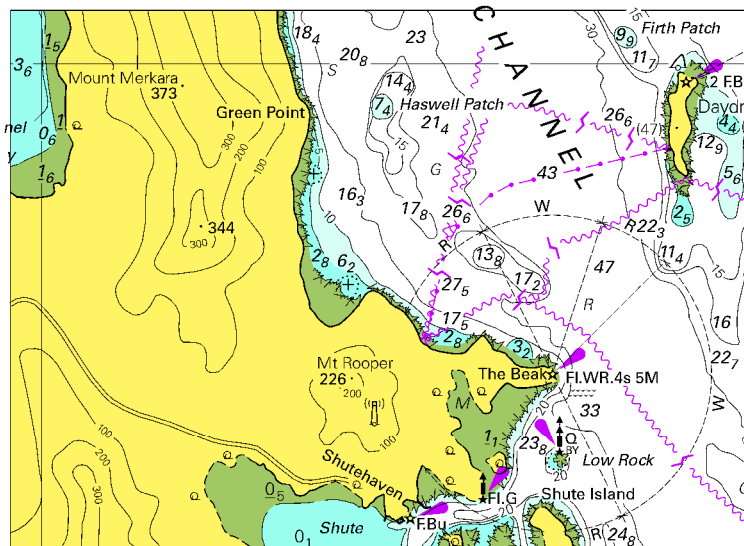
(61.0 x 80.4mm)

To accompany Australian Notice to Mariners 245/2017



© Commonwealth of Australia 2017
Block for Chart Aus 236 (52.8 x 36.5mm)

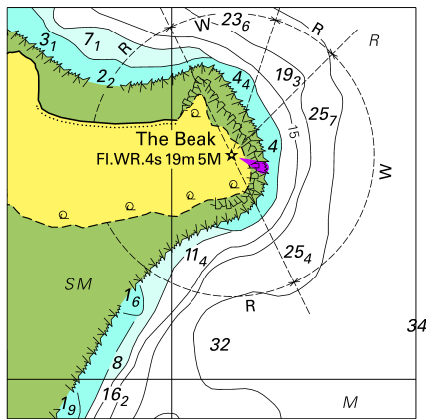
To accompany Australian Notice to Mariners 247/2017



© Commonwealth of Australia 2017
Block for Chart Aus 252

(98.1 x 71.2mm)

To accompany Australian Notice to Mariners 247/2017



© Commonwealth of Australia 2017
Block for Chart Aus 269 (53.9 x 54.4mm)