

To accompany Australian Notice to Mariners 105/2017

MARINE FARMS

Marine farms, which may be floating or fixed structures and their associated moorings should be avoided. The farms are generally marked by buoys or beacons, which may be lit. Their charted positions are approximate.

Note for chart Aus 797

To accompany Australian Notice to Mariners 107/2017

ESTUARY AND RIVER ENTRANCES

The crossing of coastal bars and entry to rivers and estuaries is potentially dangerous. Bars and entrances are dynamic in nature, hence the depth and preferred approach may vary. Leading beacons and other navigational aids may not always indicate the best approach. If mariners are unsure of the condition at a particular bar or entrance, local information should be sought prior to crossing.

Note for chart Aus 178

To accompany Australian Notice to Mariners 106/2017

MARINE FARMS

Marine farms, which may be floating or fixed structures and their associated moorings should be avoided. The farms are generally marked by buoys or beacons, which may be lit. Their charted positions are approximate.

Note for chart Aus 790

Websites:	www.tmr.qld.gov.au www.msq.qld.gov.au
-----------	--------------------------------------------------------------------------------------------------------------------------

Page 236

Brisbane Telephone: +61 7 3632 3500 Fax: +61 7 3632 7571 Email: RHMBrisbane@msq.qld.gov.au	Townsville / Abbot Point / Lucinda Telephone: +61 7 4421 8100 Fax: +61 7 4721 2028 Email: RHMTownsville@msq.qld.gov.au
Gladstone / Bundaberg / Port Alma Telephone: +61 7 4971 5200 Fax: +61 7 4971 5243 Email: Gladstone.RHM@msq.qld.gov.au	Cairns / Weipa / Mourilyan / Cooktown / Port Douglas / Cape Flattery / Thursday Island / Karumba Telephone: +61 7 4052 7400 Fax: +61 7 4052 7451 Email: RHMCairns@msq.qld.gov.au
Mackay / Hay Point Telephone: +61 7 4944 3700 Email: mackaymarine@msq.qld.gov.au	Gold Coast Telephone: +61 7 5585 1810 Fax: +61 7 5585 1818 Email: msq.goldcoast.reception@msq.qld.gov.au

Page 237

Website:	www.qld.gov.au/transport/boating/notices/about/
----------	----------------------------------------------------------------------------------------------------------------------

Page 237

Bundaberg, QLD (24° 46'S, 152° 23'E)	
UN/LOCODE: AU BDB	
Paper charts:	Aus 243, 242
AusENC cells:	AU5242P0, AU425152
Security Regulated Port:	Yes
Port Authority:	Gladstone Port Corporation
Website:	www.gpcl.com.au
Email:	info@portofbundaberg.com.au
Telephone:	+61 7 4130 2200
Port Harbour Control	Gladstone VTS
Telephone:	+61 7 4971 5208
Email:	vtsgladstone@msq.qld.gov.au
Pilotage:	Compulsory
Bundaberg Pilots	
Telephone:	+61 7 4976 8201
Fax:	+61 7 4976 8250
Pilot Boarding Ground:	24° 45.6'S, 152° 29.7'E
Communication	"Bundaberg Harbour Control"
Call up, emergencies:	VHF Ch 16
VTS:	VHF Ch 13
Operations:	VHF Ch 13, 82
Pilots and Tugs:	VHF Ch 13
Pilot Boat:	VHF Ch 16
Notice of ETA:	ETA and maximum draught to Harbour Master - Gladstone 48 hours prior to vessels arrival

Page 238

Gladstone, QLD (23° 50'S, 151° 15'E)	
UN/LOCODE: AU GLT	
Paper charts:	Aus 244, 245, 246, 270, 271
AusENC cells:	AU5244X5, AU424151
Security Regulated Port:	Yes
Port Authority:	Gladstone Ports Corporation
Website:	www.gpcl.com.au
Email:	info@gpcl.com.au
Telephone:	+61 7 4976 1333
Vessel Traffic Service	Gladstone VTS
Telephone:	+61 7 4971 5208
Email:	vtsgladstone@msq.qld.gov.au
Pilotage:	Compulsory
Pilot:	Gladstone Pilots
Telephone:	+61 7 4976 8201
Pilot Boarding Grounds:	Alpha) 23° 51.00'S, 151° 31.50'E Bravo) 23° 51.90'S, 151° 32.70'E Charlie) 23° 53.00'S, 151° 33.00'E Delta) 23° 55.00'S, 151° 31.00'E LNG) 23°50.09' S, 151° 34.67'E
Communication:	"Gladstone VTS"
Call up, emergencies:	VHF Ch 16
Port Operations:	VHF Ch 13
Pilot boat /helicopter:	VHF Ch 10
Tugs:	VHF Ch 08, 12
Notice of ETA:	48 hours notice prior to vessels arrival
Website link to Port Handbook:	www.msq.qld.gov.au/Shipping/Port-procedures/Port-procedures-gladstone.aspx

Page 239

Hay Point, QLD (21° 16'S, 149° 18'E)	
UN/LOCODE: AU HPT	
Paper charts:	Aus 250, 249
AusENC cells:	AU5250P2, AU422149
Security Regulated Port:	Yes
Port Authority:	North Queensland Bulk Ports Corporation
Website:	www.nqbp.com.au
Email:	info@nqbp.com.au
Telephone:	+61 7 4955 8155
Vessel Traffic Service call:	Hay Point VTS
Telephone:	+61 7 4956 3489 or +61 7 4956 3254
Email:	vtshaypoint@msq.qld.gov.au
Pilotage:	Compulsory
Pilot:	Duty Pilot
Telephone:	+61 7 4942 8320
Ordering:	24 hours in advance
Pilot Boarding Grounds:	Bravo) 21° 13.50'S, 149° 20.70'E Charlie) 21° 17.35'S, 149° 22.50'E
Communication:	"Hay Point VTS"
Call up, emergencies:	VHF Ch 16
Operations / VTS:	VHF Ch 10
Pilots / tugs HPS	VHF Ch 08
Pilots / tugs DBCT	VHF Ch 12
Notice of ETA:	48 Hours
For more information:	www.msq.qld.gov.au/Shipping/Port-procedures/Port-procedures-hay-point.aspx

Page 239

Esperance, WA (33° 52'S, 121° 53'E)	
UN/LOCODE: AU EPR	
Paper chart:	Aus 119
AusENC cells:	AU5119P1, AU434121, AU434122
Security Regulated Port:	Yes
Port Authority:	Southern Ports Authority
Website:	www.epsl.com.au
Email:	enquiries.esperance@southernports.com.au
Telephone:	+61 8 9072 3344
Fax:	+61 8 9071 1312
Pilot:	
Telephone:	+61 8 9072 3344
Fax:	+61 8 9071 1312
Email:	pilots@epsl.com.au
Pilotage:	Compulsory > 150 GRT
Pilot Boarding Ground:	33° 54.22'S, 121° 55.52'E
Communication:	"Esperance Harbour"
Call up, emergencies :	VHF Ch 16
Port:	VHF Ch 16, 12
Pilots:	VHF Ch 16, 12
Notice of ETA:	7 days
For more information:	www.epsl.com.au/Marine-Information.asp

Page 256

Port Alma, (Rockhampton) QLD (23° 34'S, 150° 51'E)	
UN/LOCODE: AU PTL	
Paper chart:	Aus 265
AusENC cells:	AU5265P0, AU424150, AU424151
Security Regulated Port:	Yes
Port Authority:	Gladstone Ports Corporation
Website:	www.gpcl.com.au
Email:	info@gpcl.com.au
Telephone:	+61 7 4934 6931
Port Operator:	Gladstone VTS
Telephone:	+61 7 4971 5208
Fax:	+61 7 4971 5520
Email:	vtsgladstone@msq.qld.gov.au
Pilotage:	Compulsory
Pilot:	Gladstone Pilots
Telephone:	+61 7 4976 8201 +61 7 4976 8250
Pilot Boarding Ground:	23° 24.40'S, 151° 00.94'E
Communication:	"Gladstone VTS"
Call up, emergencies:	VHF Ch 16
Port Operations:	VHF Ch 16, 13
Port Alma Wharves:	VHF Ch 06
Notice of ETA:	48 hours prior to arrival
For more information:	www.msq.qld.gov.au/Shipping/Port-procedures/Port-procedures-port-alm.aspx

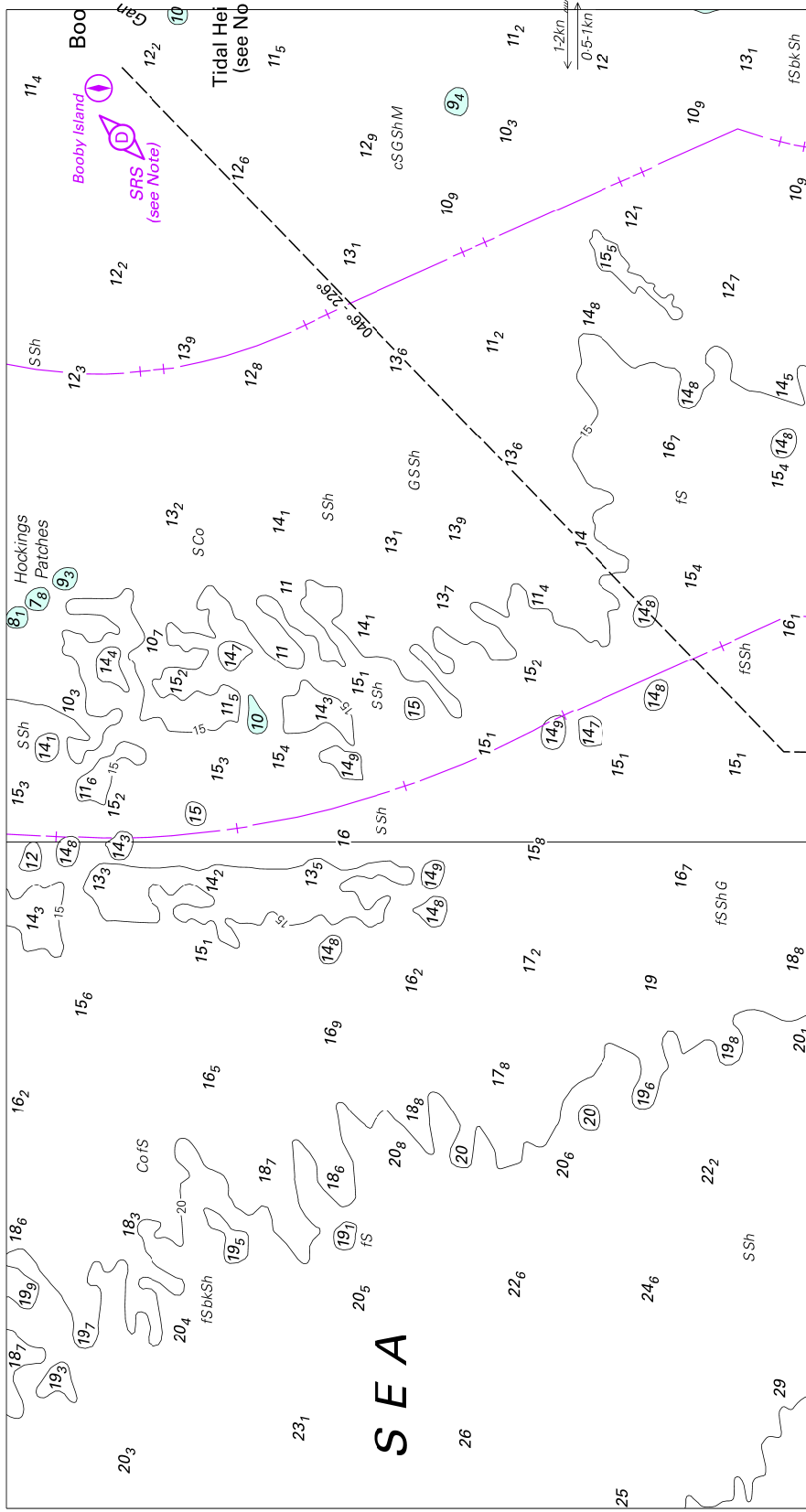
Page 240

Port Walcott, WA (20° 35'S, 117° 11'E)	
UN/LOCODE: AU PWL	
Paper charts:	Aus 55, 56
AusENC cells:	AU5056P0, AU421117
Security Regulated Port:	Yes
Port Authority:	Department of Transport WA
Website:	www.transport.wa.gov.au/marine
Harbour Master's office:	+61 8 9435 7692
Fax:	+61 8 9435 7807
Deputy Harbour Master:	+61 8 9435 7533
Operator:	Rio Tinto
Telephone:	+61 8 9186 1487
Fax:	+61 8 9143 5804
Email:	marine.operations@riotinto.com
Pilot:	Port Walcott Pilots
Telephone:	+61 8 9187 1329
Email:	pw@mswapilots.com.au
Pilotage:	Compulsory > 500 GRT
Pilot Boarding Ground:	Anchorage position No. 3 20° 32.4'S 117° 15.00' E
Communication	
Call up, emergencies:	VHF Ch 16
Port:	VHF Ch 14
Helicopter:	VHF Ch 09
Tugs:	VHF Ch 09, 10
Notice of ETA:	7 days

Page 257

Hobart, TAS (42° 52'S, 147° 19'E)	
UN/LOCODE: AU HBA	
Paper chart:	Aus 172
AusENC cells:	AU5172P0, AU443147
Security Regulated Port:	Yes
Port Authority:	Tasmanian Ports Corporation
Website:	www.tasports.com.au
Email:	secretary@tasports.com.au
Telephone:	+61 3 6235 1000 1300 366 742 (AUST only)
Pilots and Port	
Telephone:	+61 3 6380 3075
Fax:	+61 3 6380 3043
Pilotage:	Compulsory >35m LOA
Pilot Boarding Grounds:	42° 55.5'S, 147° 23.4'E 43° 03.7'S, 147° 23.4'E 43° 26.3'S, 147° 03.8'E
Communication:	"Hobart VTS"
Call up, emergencies:	VHF Ch 16
Pilot:	VHF Ch 12
Port:	VHF Ch 06, 08, 12, 67
Notice of ETA:	24 hours
For more information:	www.tasports.com.au/port_services/port_information.html

To accompany Australian Notice to Mariners 91/2017

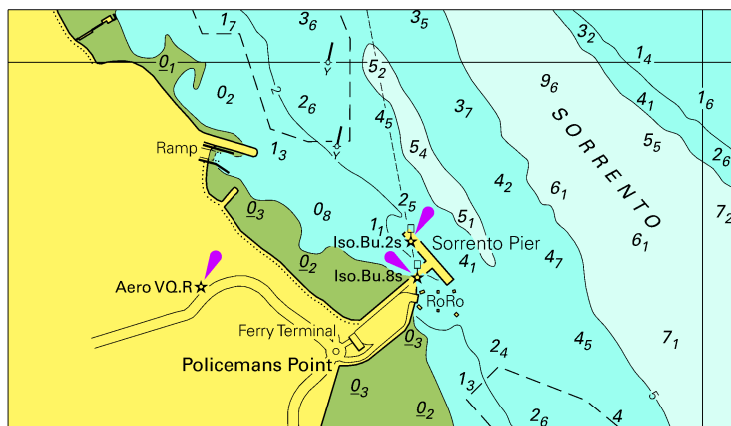


Block for Chart Aus 301

© Commonwealth of Australia 2017

(216.6 x 116.0mm)

To accompany Australian Notice to Mariners 101/2017

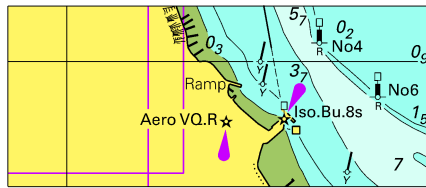


© Commonwealth of Australia 2017

Block for Chart Aus 143

(96.6 x 55.3mm)

To accompany Australian Notice to Mariners 101/2017



© Commonwealth of Australia 2017

Block for Chart Aus 158 (56.2 x 23.8mm)