

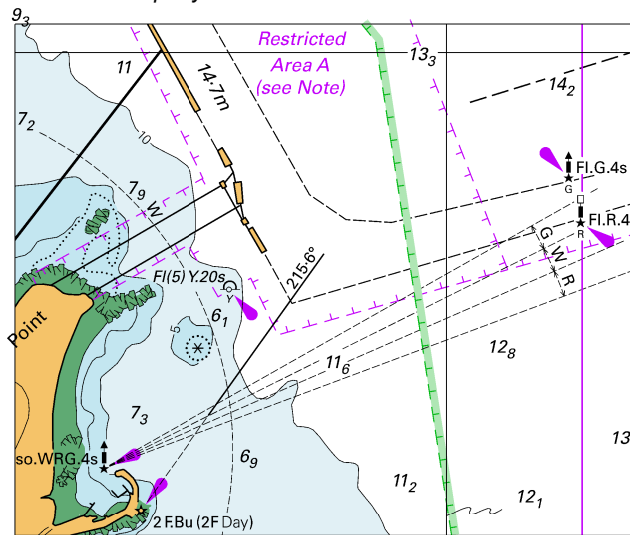
To accompany Australian Notice to Mariners 825/2017

ENVIRONMENTALLY SENSITIVE
SEA AREA (ESSA)

Areas of this chart are Environmentally Sensitive Sea Areas (ESSA). Areas within this marine protected area have restrictions on access and activities. For details see Seafarers Handbook for Australian Waters AHP 20.

Note for chart Aus 776

To accompany Australian Notice to Mariners 817/2017

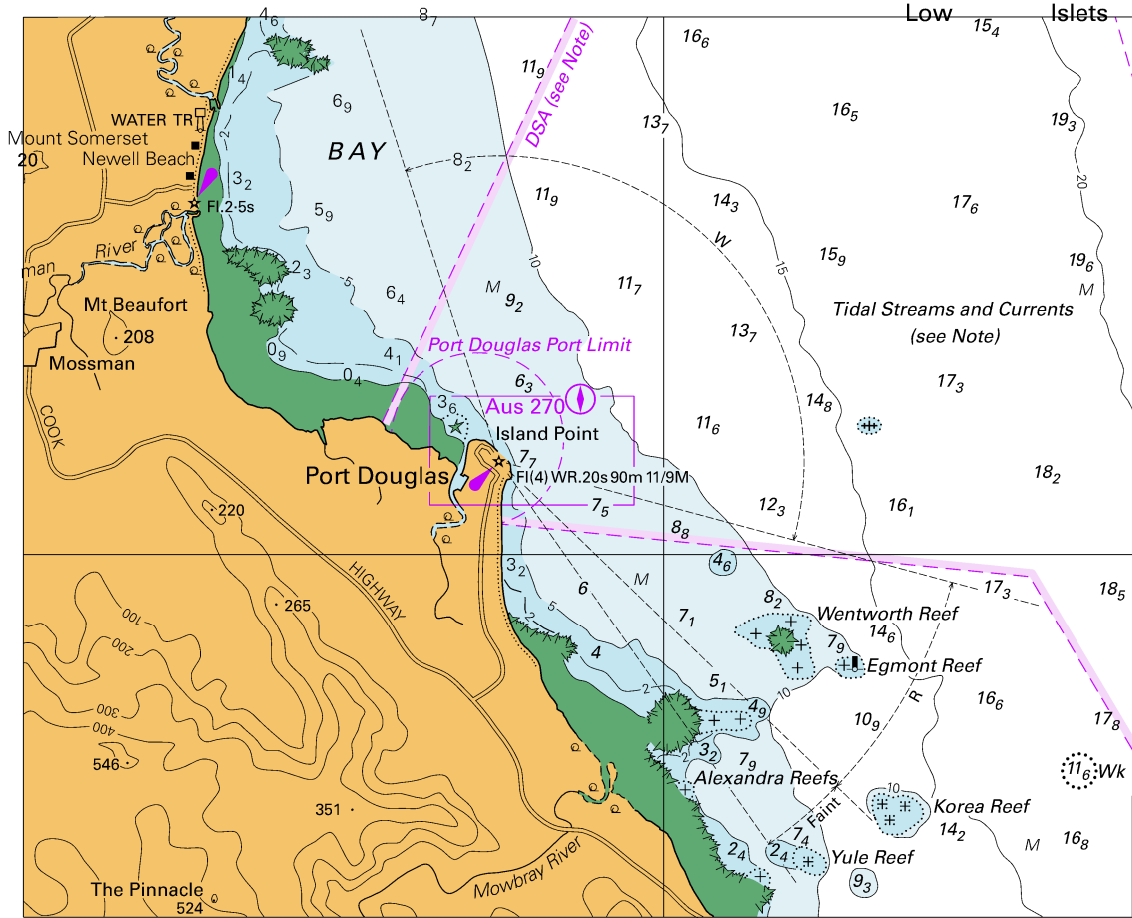


© Commonwealth of Australia 2017

Block for Chart Aus 249

(82.6 x 67.6mm)

To accompany Australian Notice to Mariners 819/2017

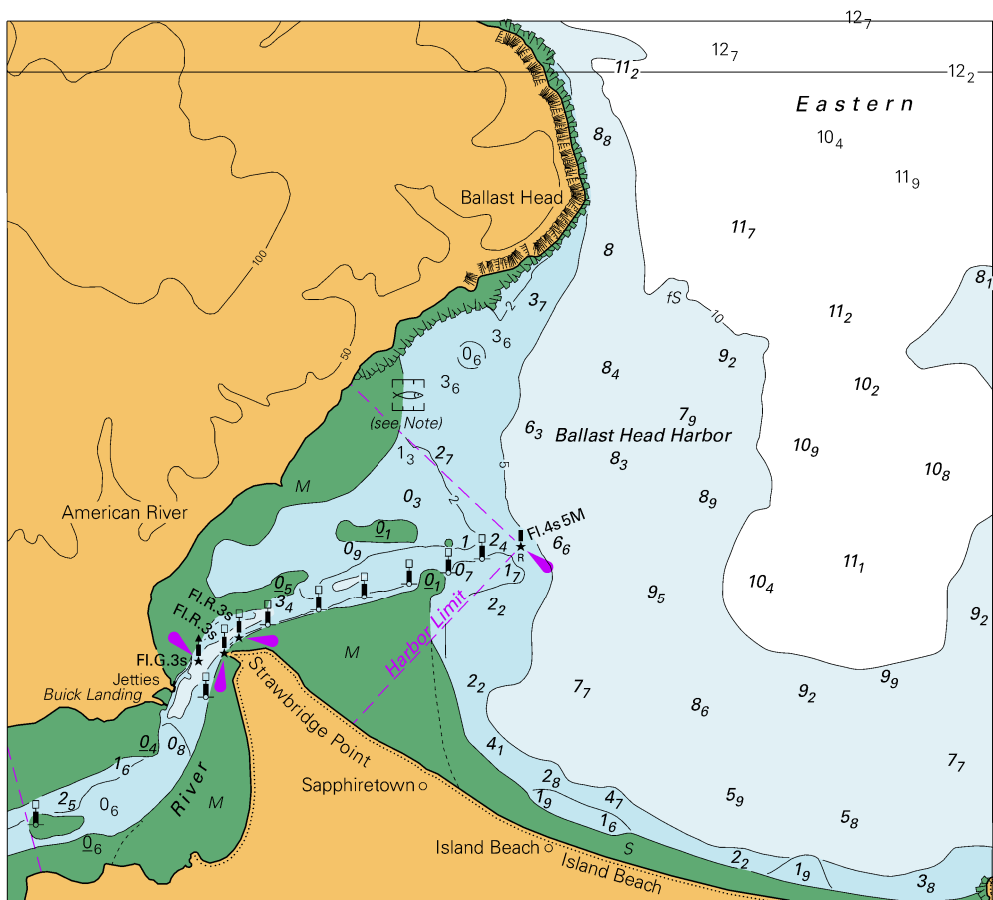


Block for Chart Aus 830

© Commonwealth of Australia 2017

(146.7 x 119.0mm)

To accompany Australian Notice to Mariners 824/2017



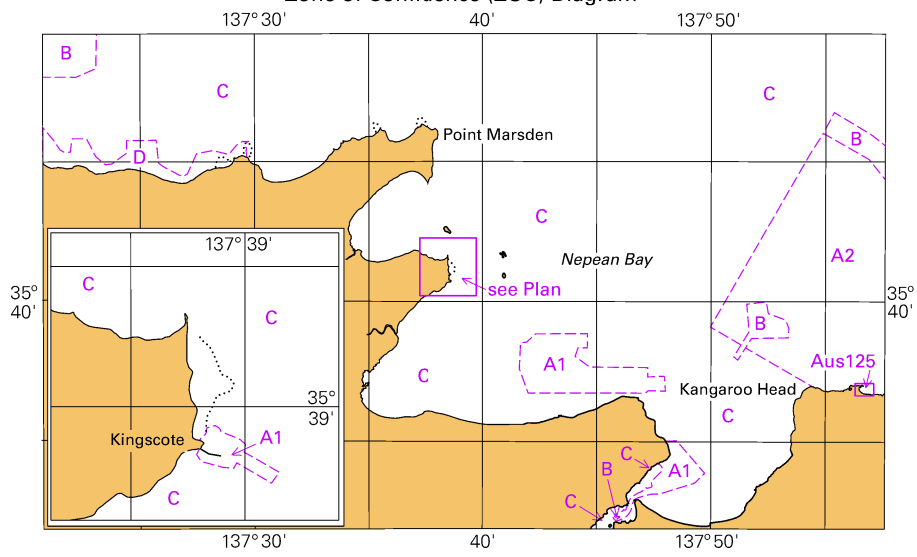
Block A for Chart Aus 129

© Commonwealth of Australia 2017

(131.3 x 116.2mm)

To accompany Australian Notice to Mariners 824/2017

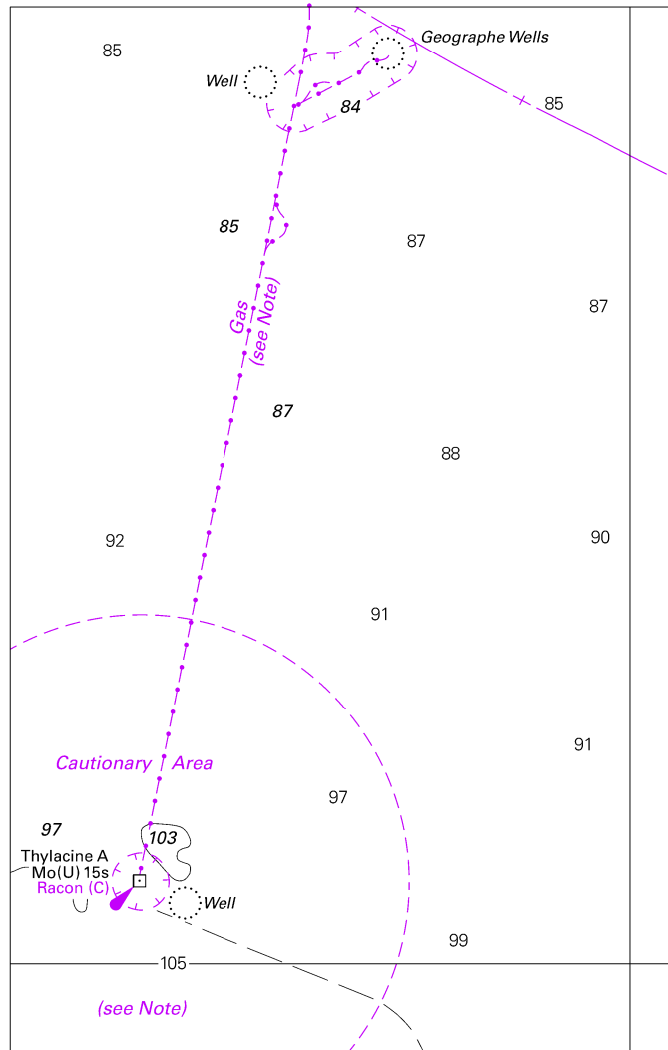
Zone of Confidence (ZOC) Diagram



© Commonwealth of Australia 2017

Block B for Chart Aus 129

To accompany Australian Notice to Mariners 826/2017

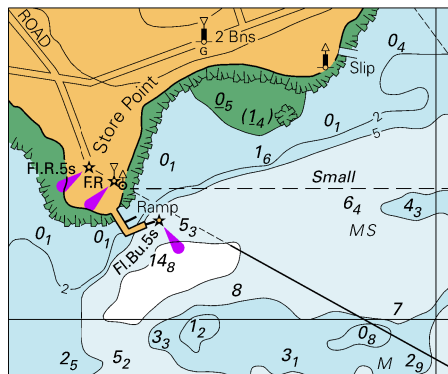


© Commonwealth of Australia 2017

Block for Chart Aus 787

(88.4 x 138.6mm)

To accompany Australian Notice to Mariners 828/2017



© Commonwealth of Australia 2017

Block for Chart Aus 179

(59.1 x 48.4mm)