

*To accompany Australian Notice to Mariners 698/2017*

CAUTIONARY AREA AND PETROLEUM  
SAFETY ZONE

Mariners are advised to exercise caution and allow an adequate safe distance when navigating in close proximity to offshore oil and gas structures. Within the Cautionary Area a Petroleum Safety Zone extends for a radius of 500 metres around offshore structures into which entry is prohibited to all unauthorised vessels. For details see Seafarers Handbook for Australian Waters AHP 20.

*Note for chart Aus 319*

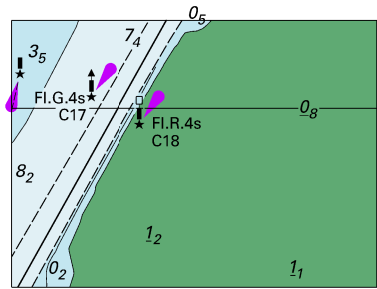
*To accompany Australian Notice to Mariners 698/2017*

CAUTIONARY AREA AND PETROLEUM  
SAFETY ZONE

Mariners are advised to exercise caution and allow an adequate safe distance when navigating in close proximity to offshore oil and gas structures. Within the Cautionary Area a Petroleum Safety Zone extends for a radius of 500 metres around offshore structures into which entry is prohibited to all unauthorised vessels. For details see Seafarers Handbook for Australian Waters AHP 20.

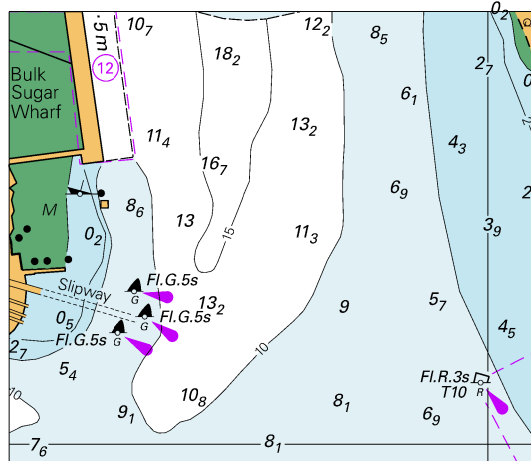
*Note for chart Aus 320*

To accompany Australian Notice to Mariners 688/2017



© Commonwealth of Australia 2017  
**Block for Chart Aus 262** (49.2 x 35.2mm)

To accompany Australian Notice to Mariners 688/2017

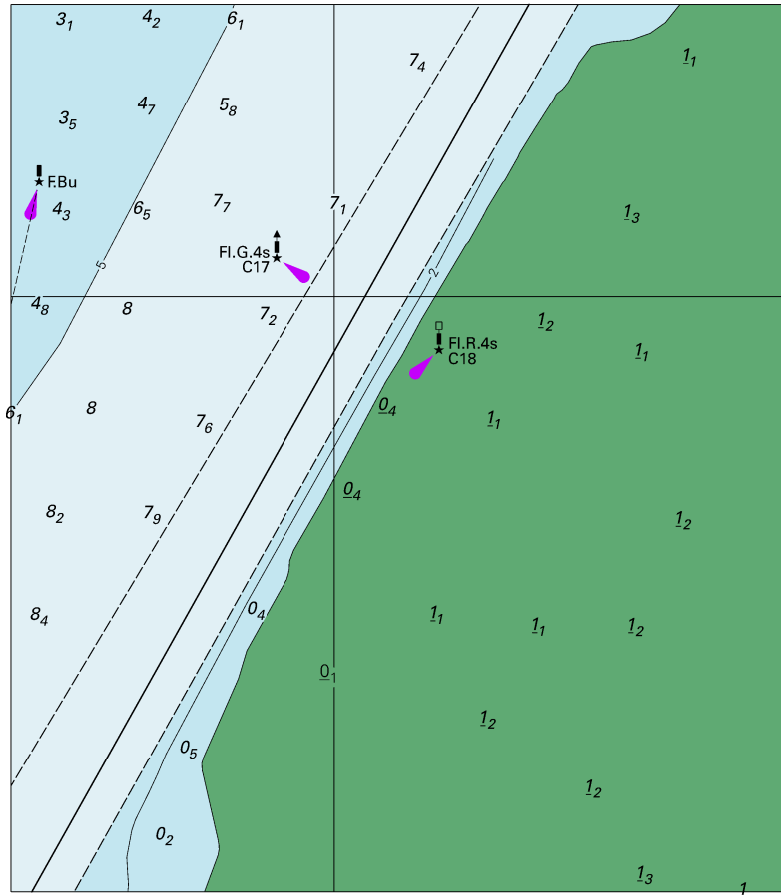


© Commonwealth of Australia 2017

Block C for Chart Aus 263

(69.7 x 59.5mm)

To accompany Australian Notice to Mariners 688/2017

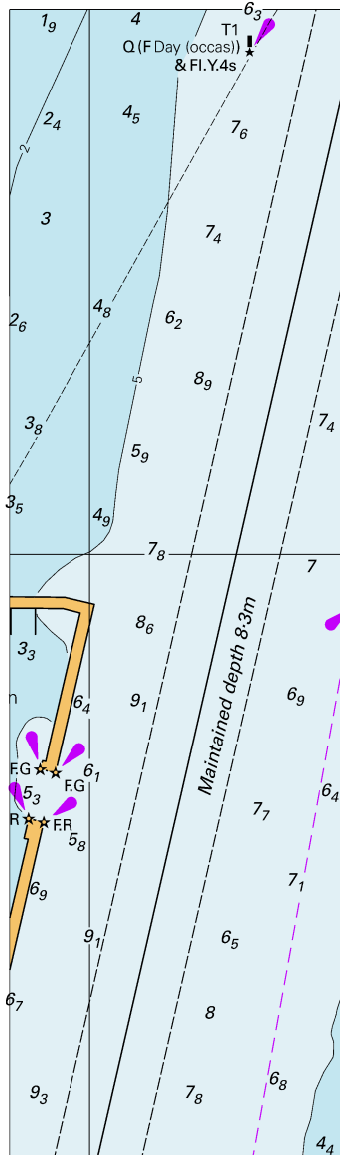


© Commonwealth of Australia 2017

Block A for Chart Aus 263

(102.8 x 117.4mm)

To accompany Australian Notice to Mariners 688/2017

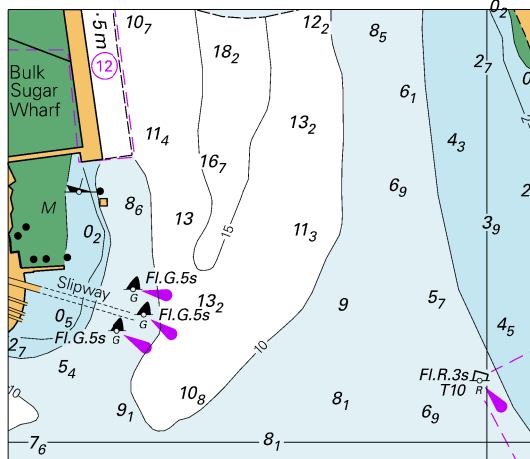


© Commonwealth of Australia 2017

Block B for Chart Aus 263

(44.4 x 151.9mm)

To accompany Australian Notice to Mariners 688/2017



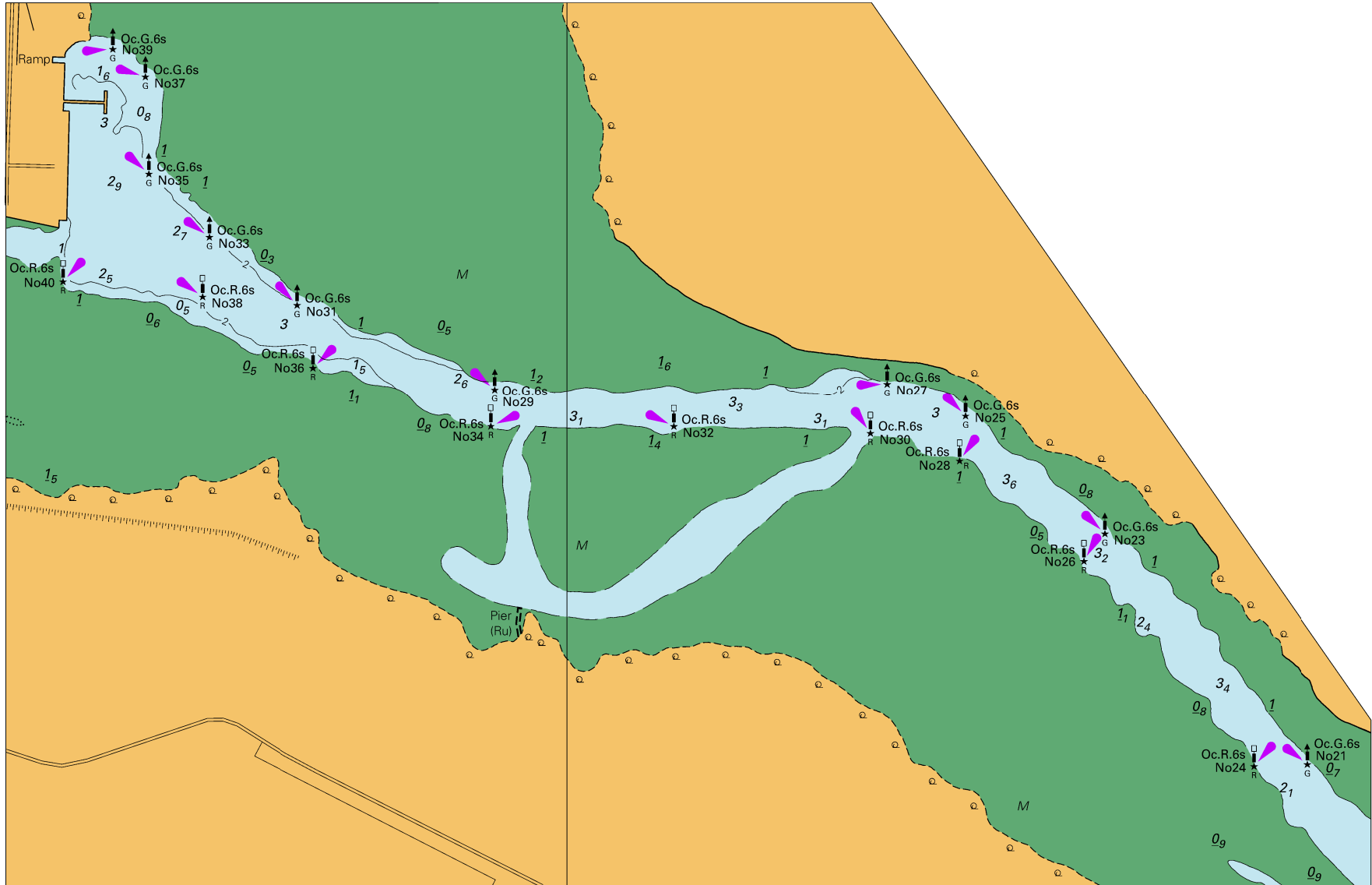
© Commonwealth of Australia 2017

Block for Chart Aus 264

(69.7 x 59.5mm)







Block B for Chart Aus 152

To accompany Australian Notice to Mariners 704/2017

