

| <b>Western Port, VIC (38° 22'S, 145° 13'E)</b> |  |
|--|--|
| UN/LOCODE: AU WEP                              |  |
| Paper charts:                                  | Aus 150, 151, 152  |
| AusENC cells:                                  | AU5152P1 - P4, AU439145  |
| Security Regulated Port:                       | Yes  |
| Operator:                                      | Victorian Regional Channels Authority  |
| Website:                                       | <a href="http://www.regionalchannels.vic.gov.au">www.regionalchannels.vic.gov.au</a>                   |
| Email:   | <a href="mailto:admin@regionalchannels.vic.gov.au">admin@regionalchannels.vic.gov.au</a>               |
| Harbour Control                                |  |
| Mobile:  | +61 428 549 235  |
| Email:   | <a href="mailto:dhm.hastings@regionalchannels.vic.gov.au">dhm.hastings@regionalchannels.vic.gov.au</a> |
| Fax:   | +61 3 5983 8684  |
| Pilotage:                                      | Compulsory >35m LOA  |
| Pilot:   | Contact Harbour Control 24/7   |
| Telephone:                                     | +61 428 549 235  |
| Pilot Boarding Ground:                         | 38° 32.75'S, 145° 01.84'E  |
| Communication:                                 | "Hastings Harbour Control"   |
| Call up, emergencies:                          | VHF Ch 16, 14  |
| Harbour Control:                               | VHF Ch 14  |
| Pilots and Tugs:                               | VHF Ch 06, 08  |
| Notice of ETA:                                 | 48 hours   |
| Notice of ETD:                                 | 24 hours   |
| For more information:                          | <a href="http://www.regionalchannels.vic.gov.au">www.regionalchannels.vic.gov.au</a>                   |

Page 247

| <b>Bunbury, WA (33° 19'S, 115° 38'E)</b> |  |
|--|--|
| UN/LOCODE: AU BUY                        |  |
| Paper charts:                            | Aus 115, 755   |
| AusENC cells:                            | AU5115P1, AU434115   |
| Security Regulated Port:                 | Yes  |
| Port Authority:                          | Southern Ports Authority   |
| Website:                                 | <a href="http://www.southernports.com.au">www.southernports.com.au</a>                             |
| Email:                                   | <a href="mailto:enquiries.bunbury@southernports.com.au">enquiries.bunbury@southernports.com.au</a> |
| Telephone:                               | +61 8 9729 6527  |
| Pilot                                    |  |
| Email:                                   | <a href="mailto:pilot@southernports.com.au">pilot@southernports.com.au</a>                         |
| Pilotage:                                | Compulsory > 150 GRT   |
| Pilot Boarding Ground:                   | 33° 15.85'S, 115° 37.40'E  |
| Communication:                           | "Port of Bunbury"  |
| Call up, emergencies:                    | VHF Ch 16  |
| On arrival/ Pilots/ tugs:                | VHF Ch 12  |
| Notice of ETA:                           | 48 hours   |
| For more information:                    | <a href="http://www.southernports.com.au">www.southernports.com.au</a>                             |

Page 255

| Definitions of Operational Areas - NSCV Part B |  |
|--|--|
| Area A   | Unlimited domestic operations, including operations greater than 200 nautical miles to seaward of the coast.   |
| Area B   | Operations within a limit of 200 nautical miles to seaward of the coast; or within such lesser limits as may be specified.   |
| Area C   | Operations within:<br>a) 30 nautical miles from the seaward limit of a safe haven, including designated smooth or partially smooth waters (i.e. sheltered waters), or within such lesser limits as may be specified; or<br>b) specified waters designated by the Authority as "restricted offshore". |
| Area D   | Operations within specified geographical limits in waters designated by the Authority as partially smooth waters.  |
| Area E   | Operations within specified geographical limits in waters designated by the Authority as smooth waters (see also Clause 1.8 - definition of smooth waters).  |

Notes:

1. Nautical charts and publications, including paper nautical charts, manuscript publications, digital publications, official ENC and official RNC, shall be those originated by a relevant government authority or an authorized National Hydrographic Office (Annex B to NSCV Part C, Section 7C).
2. Using the ECDIS or ECS options includes the requirement for backup (Table 2 and Annex C to NSCV Part C, Section 7C).
3. It is good operational practice to carry appropriate paper nautical charts on vessels less than 12 metres in length operating outside port or harbour limits (Table 2 of NSCV Part C, Section 7C).

## 13.2 Official Nautical Charts and Publications

1. Official nautical charts and publications are those issued by, or on the authority of, a Government, authorised Hydrographic Office or other relevant institution, and designed to meet the requirements of marine navigation. In Australia, the relevant hydrographic authority is the Australian Hydrographic Service (AHS) (see *Navigation Act 2012 (Cth)* Chapter 6 Part 6 Division 5).
2. Official nautical products published by the AHS include:
  - ENC - An ENC is an official vector electronic chart. These are available via the AusENC service and the various distributors aligned to the International Centre for ENC (IC-ENC).
  - Paper nautical charts
  - Notices to Mariners (NtM)
  - Australian National Tide Tables (ANTT) (manuscript) and AusTides (digital)
  - Australian Chart and Publications Maintenance Handbook
  - Seafarers Handbook for Australian Waters
3. More information on these products can be found at the AHS website or in the Australian Chart and Publications Maintenance Handbook.
4. The Australian Hydrographic Service contact details are:

|  |                                      |
|--|--------------------------------------|
| Postal address:                              | Locked Bag 8801, Wollongong NSW 2500 |
| Telephone:                                   | +61 2 4223 6500                      |
| Fax:   | +61 2 4223 6599                      |
| Email  |                                      |
| New or revised information affecting charts: | datacentre@hydro.gov.au              |
| Products - wholesale orders and enquiries:   | hydro.sales@defence.gov.au           |
| Website:                                     | www.hydro.gov.au                     |

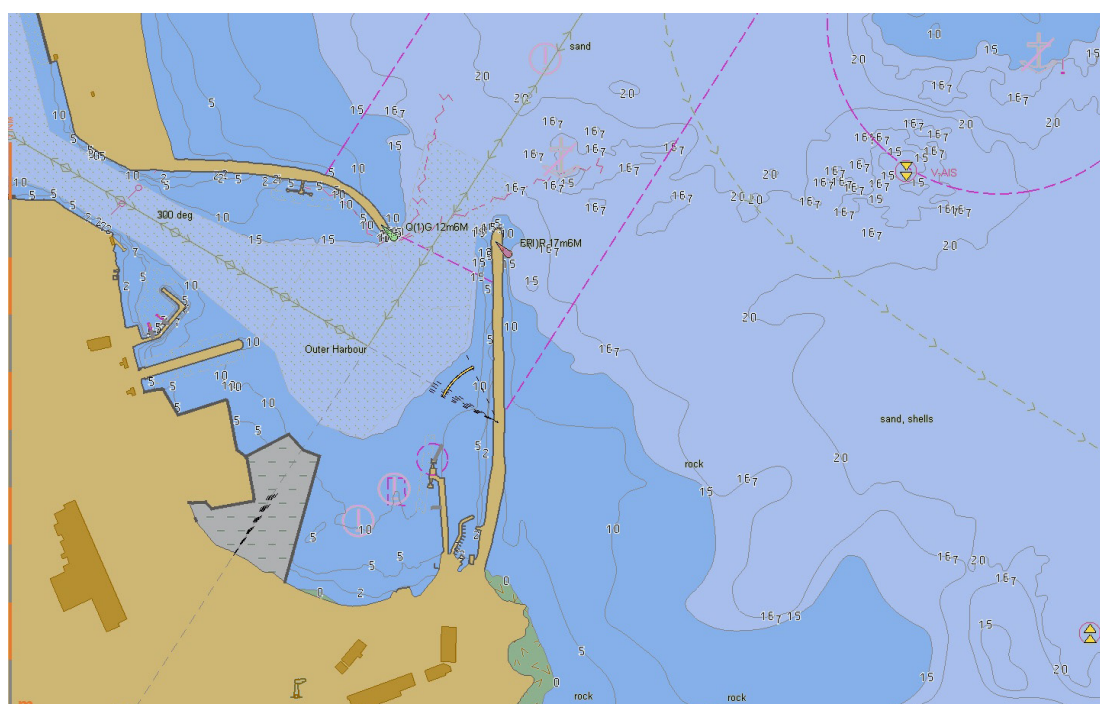
### 13.3 Important Information for Chart Users

1. It is important for charts and publications to be the current edition and kept up to date, particularly when navigating within constrained or environmentally sensitive areas, as changes have the potential to affect navigation safety. Use of a superseded or withdrawn charts does not meet the legal requirements for carriage and use of up to date charts.
2. ENC Updates and NtM are only relevant to the chart edition that they are issued for. As each new edition of an ENC or paper chart or publication is published, it is likely to include significantly enhanced base information and detail that has not been previously published by ENC Update / NtM. ENC Updates can only be applied in the correct sequence to the correct edition, while details in a NtM applicable to the current paper chart may simply not fit or merge with the details in the superseded edition of a paper chart or publication. ENC updates and NtM are never issued for withdrawn or superseded editions.
3. Charts can contain a wide variety of individual hydrographic surveys, even within the limits of a single chart. The quality of individual surveys may vary from place to place due to the age of the survey and the technology used. The AHS makes all reasonable efforts to ensure the accuracy and completeness of all information, including third party information, which it uses in nautical charts and publications, by making an assessment of all information received. This assessment is indicated on both ENC and paper charts via the Zone of Confidence (ZOC) system (see 13.10).
4. Information regarding unofficial charts may be found at 13.5.5.

### 13.4 Australian Published Charts

1. The AHS currently publishes approximately 500 official paper nautical charts and 900 official Electronic Navigational Charts (AusENC, Australian ENC). Coverage includes Australia, Papua New Guinea, Solomon Islands, Timor Leste (paper charts only) and the Australian Antarctic Territory.
2. The Australian Chart Index (ACI) provides an online catalogue of Australian paper nautical charts and AusENC packs. The ACI can be found on the AHS website:

|          |  |
|----------|--|
| Website: | <a href="http://www.hydro.gov.au/prodserv/paper/charts.htm">www.hydro.gov.au/prodserv/paper/charts.htm</a> |
|----------|--|



### 13.5.3 ENC updates

1. ENC Updates are published by the AHS on a fortnightly cycle. They contain the same or greater information than NtM for paper charts, including all permanent, temporary and preliminary NtM, as well as paper chart block corrections (which are actually derived from the updated ENC).
2. ENC Updates on the AHS website are related to the most recent January or July AusENC base disk. ENC Updates are available as follows:
  - AHS website as individual fortnightly downloads (each download must be loaded into ECDIS in the correct order)
  - AHS website as cumulative downloads (only the latest download needs to be loaded into ECDIS as it contains all previous fortnightly updates already in the correct order)
  - From any international ENC distributor supplying Australian published ENC as part of their services.
3. Most ENC updates result in a direct change to content within the existing ENC (such as a light being relocated or its characteristics altered). Where a change results in a new edition of the ENC, a new permit will be issued automatically and without charge for that ENC to cover the remainder of the subscription period.

### 13.5.4 Raster Nautical Charts

1. Selected RNC of Australian, Papua New Guinean and Solomon Island waters remain available as RNC via the United Kingdom Hydrographic Office (UKHO) ARCS service. These are derived from UK copies of selected published charts and are not supported by the AHS. In the event that differences are noted between an Australian ENC and a UK produced RNC, the Australian published ENC must be considered the authoritative chart.

### 13.5.5 Unofficial electronic charts

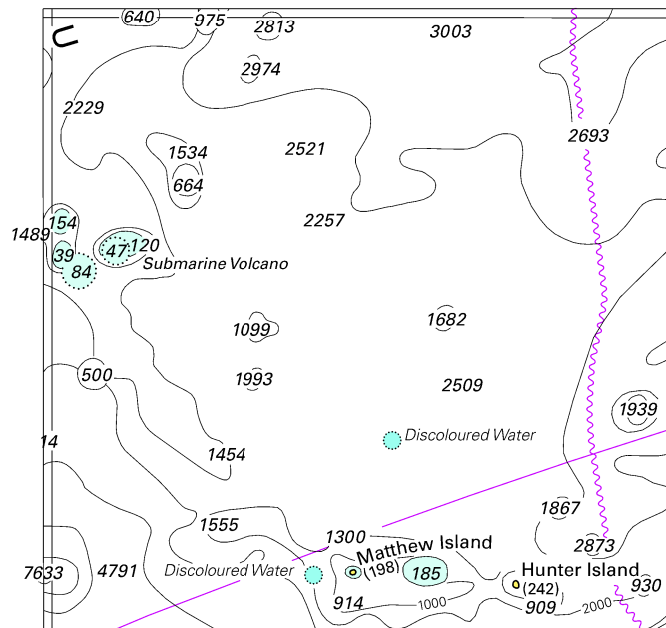
1. A number of commercial companies are licensed to copy paper charts or ENC into their own proprietary electronic format. These are for use in small chart plotters by recreational vessel operators only. The quality of copying is variable and the update services are generally very delayed, even though they may appear relatively frequent. These charts are not warranted for navigational use by either the AHS or their manufacturer and all are marked “not for navigation.” Instances include reefs missing from charts and a major land reclamation area remaining missing for two years after completion of works, both despite being included on the official charts. These charts do not meet carriage requirements for any commercial vessel of 12 metres or more in length.

## 13.6 Paper Nautical Charts and Notices to Mariners

### 13.6.1 Australian paper nautical chart indexes

1. The location and extent of all Australian paper nautical charts is shown in the Australian Hydrographic Service Index of Nautical Charts. These are published in paper form annually. The Index is published as two sheets as follows:
  - Aus 5000 - Australian Hydrographic Service Index of Nautical Charts - Northern Portion
  - Aus 5001 - Australian Hydrographic Service Index of Nautical Charts - Southern Portion
2. Mariners should note that the UK Hydrographic Office’s Admiralty Chart Catalogue does not include all charts within the Australian paper nautical chart series.

To accompany Australian Notice to Mariners 594/2017



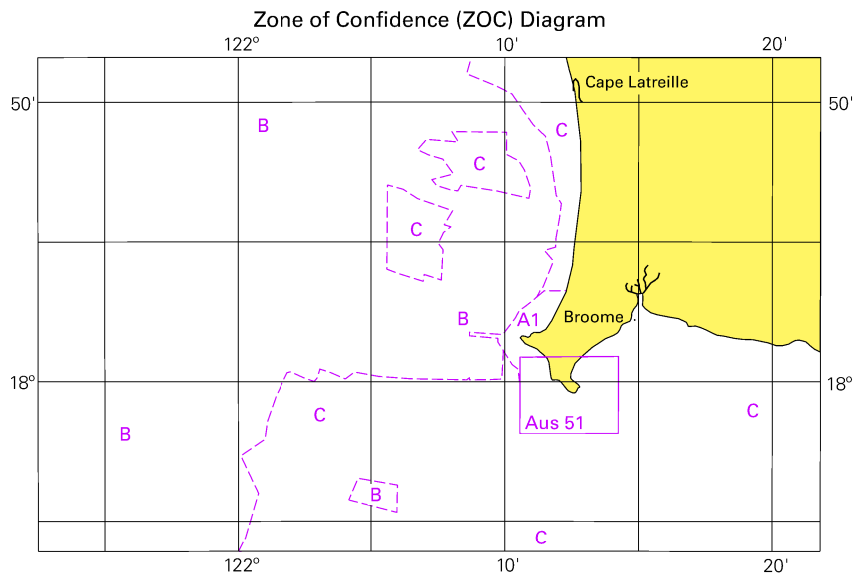
© Commonwealth of Australia 2017

Block for Chart Aus 4602

(83.4 x 82.0mm)



To accompany Australian Notice to Mariners 603/2017

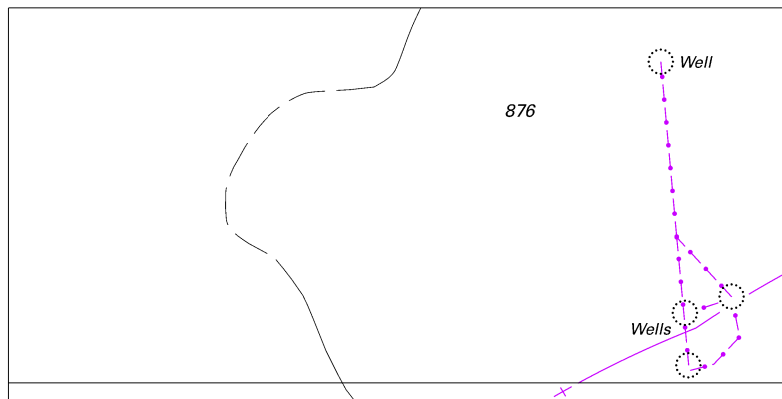


© Commonwealth of Australia 2017

Block B for Chart Aus 50

(103.5  
103.3 x 65.3mm)

To accompany Australian Notice to Mariners 605/2017

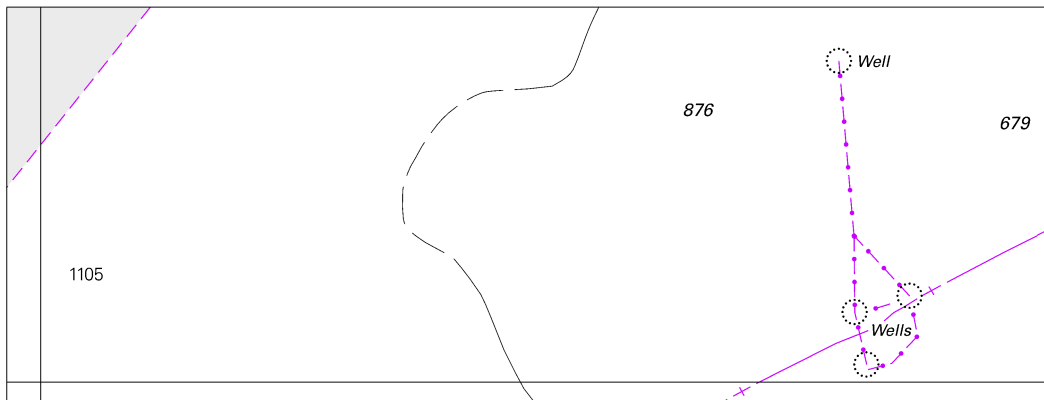


© Commonwealth of Australia 2017

Block for Chart Aus 328

(103.5 x 52.0mm)

To accompany Australian Notice to Mariners 605/2017

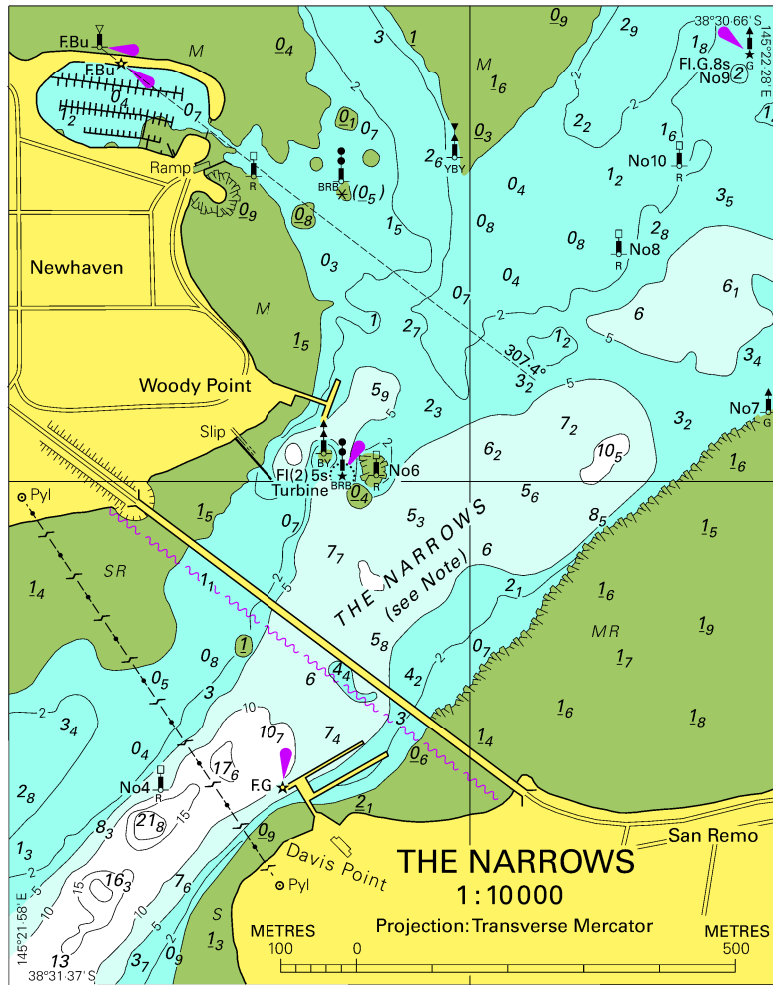


Block for Chart Aus 329

© Commonwealth of Australia 2017

(137.8 x 52.0mm)

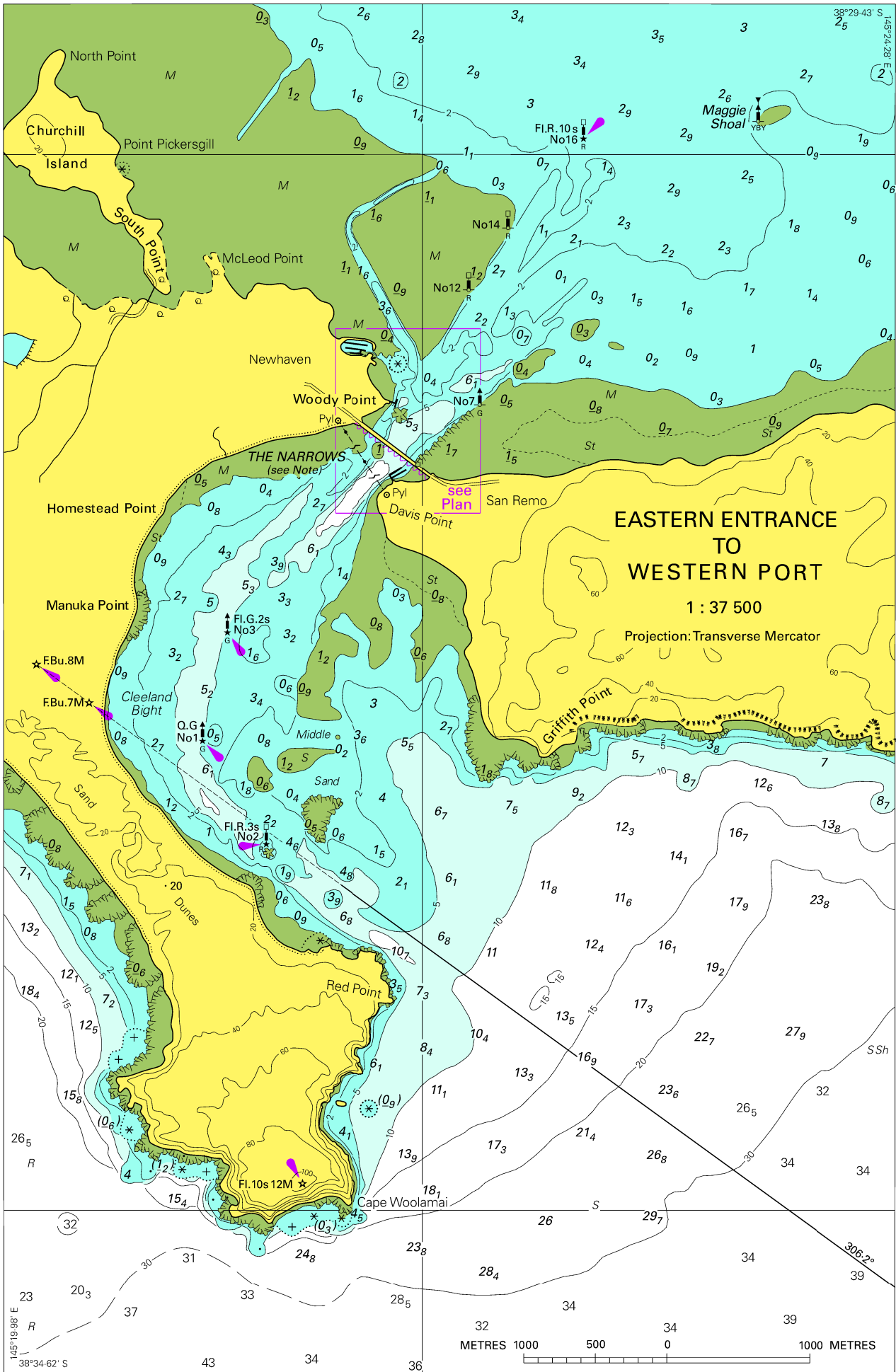
To accompany Australian Notice to Mariners 609/2017



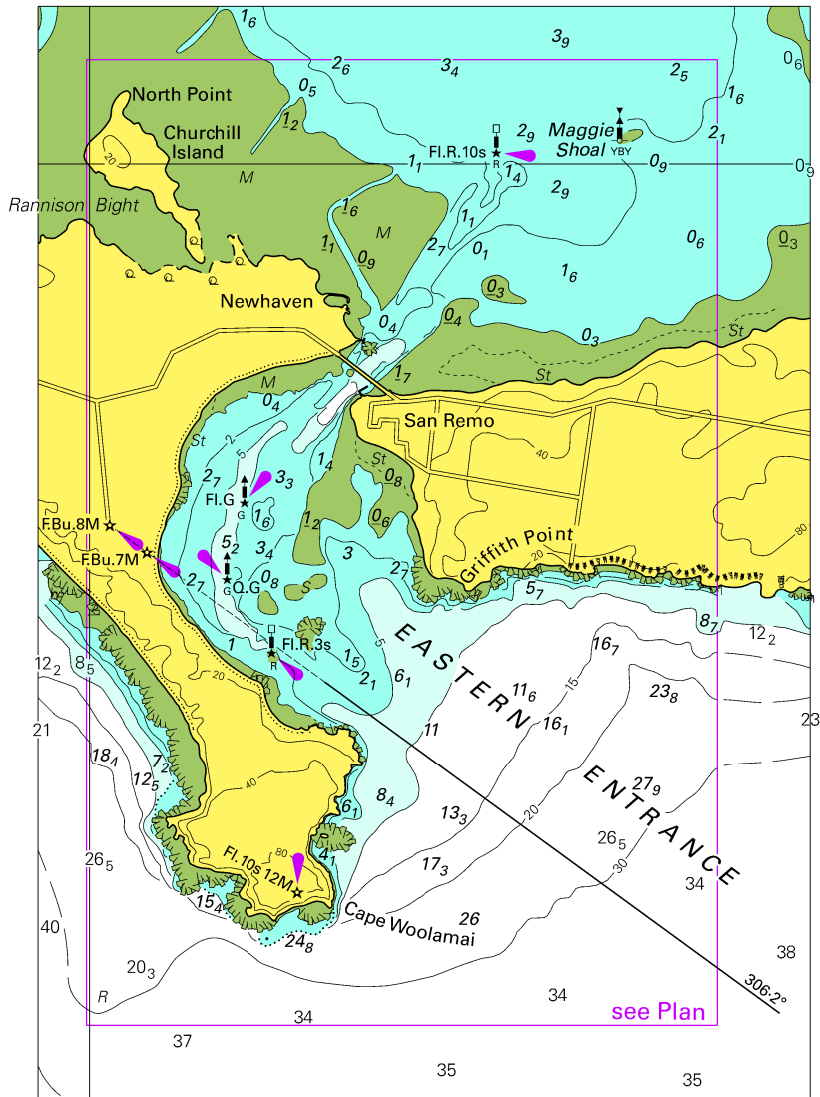
© Commonwealth of Australia 2017

Block C for Chart Aus 150

(101.7 x 129.5mm)



To accompany Australian Notice to Mariners 609/2017



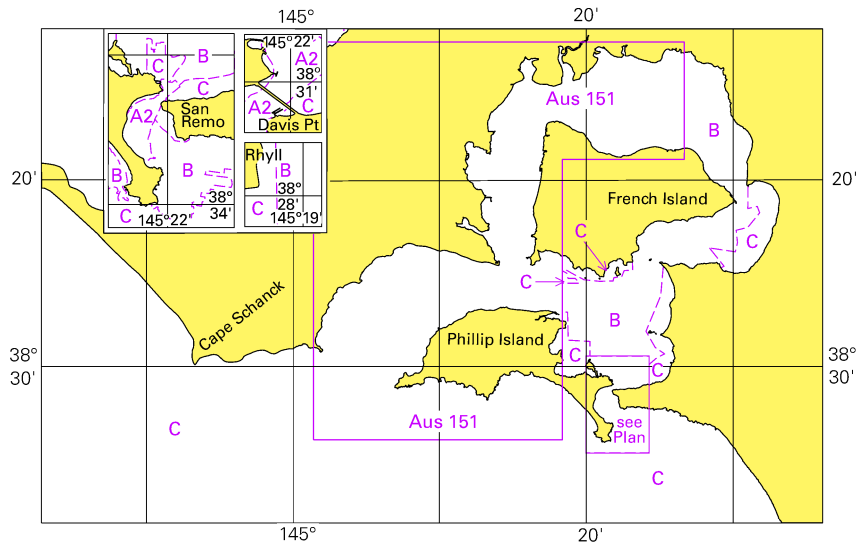
© Commonwealth of Australia 2017

Block A for Chart Aus 150

(102.1 x 144.4mm)

To accompany Australian Notice to Mariners 609/2017

Zone of Confidence (ZOC) Diagram



© Commonwealth of Australia 2017

Block D for Chart Aus 150

(103.3 x 65.3mm)