

*To accompany Australian Notice to Mariners 416/2017*

CRUISE SHIP AREA  
Vessels must not anchor within or impede  
access to this area without first receiving  
clearance from Hobart VTS on:  
VHF Ch12  
T: 03 6380 3013  
E: radio.room@tasports.com.au

*Note for chart Aus 171*

*To accompany Australian Notice to Mariners 416/2017*

CRUISE SHIP AREA  
Vessels must not anchor within or impede  
access to this area without first receiving  
clearance from Hobart VTS on:  
VHF Ch12  
T: 03 6380 3013  
E: radio.room@tasports.com.au

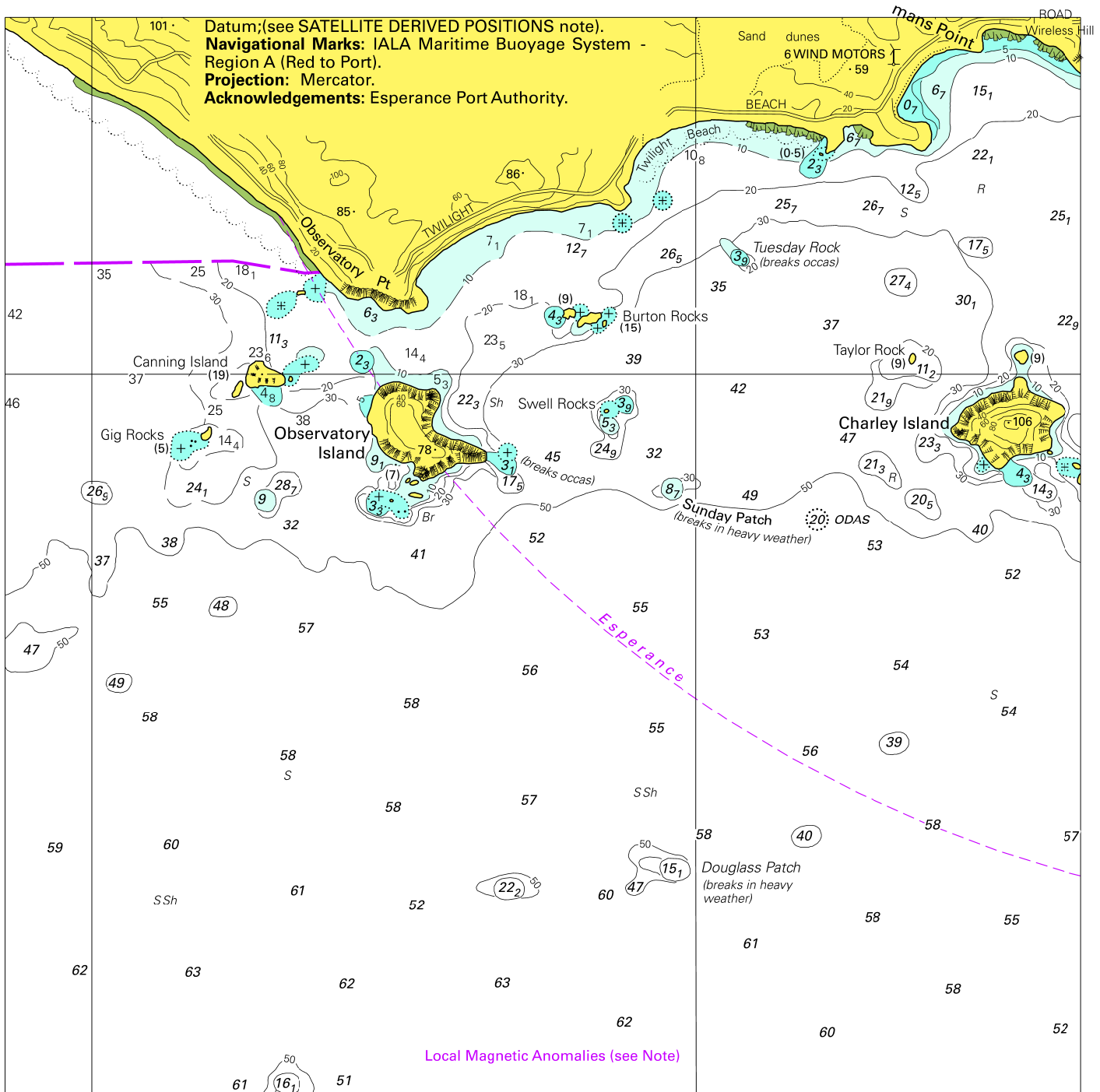
*Note for chart Aus 766*

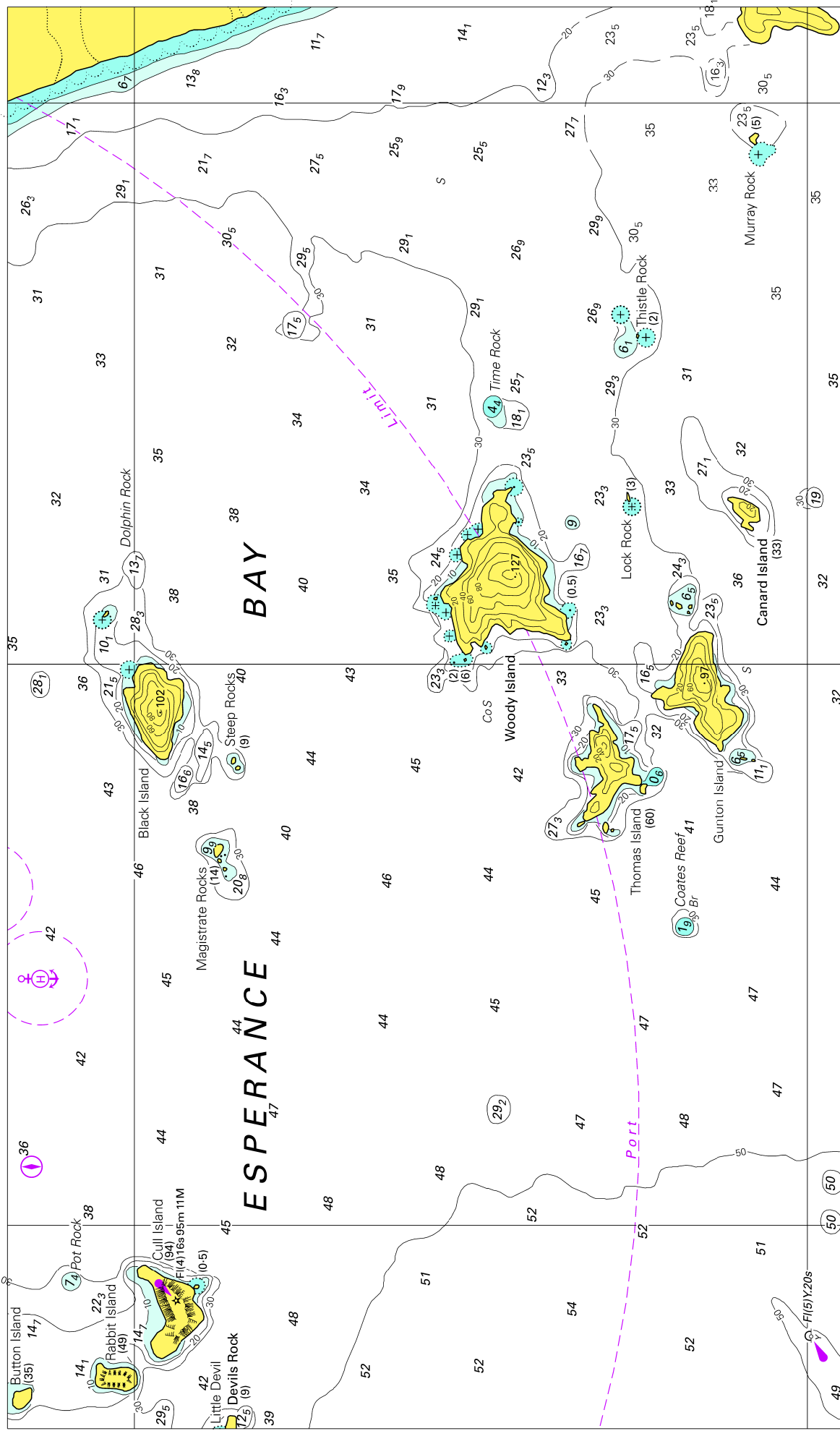
*To accompany Australian Notice to Mariners 416/2017*

CRUISE SHIP AREA  
Vessels must not anchor within or impede  
access to this area without first receiving  
clearance from Hobart VTS on:  
VHF Ch12  
T: 03 6380 3013  
E: radio.room@tasports.com.au

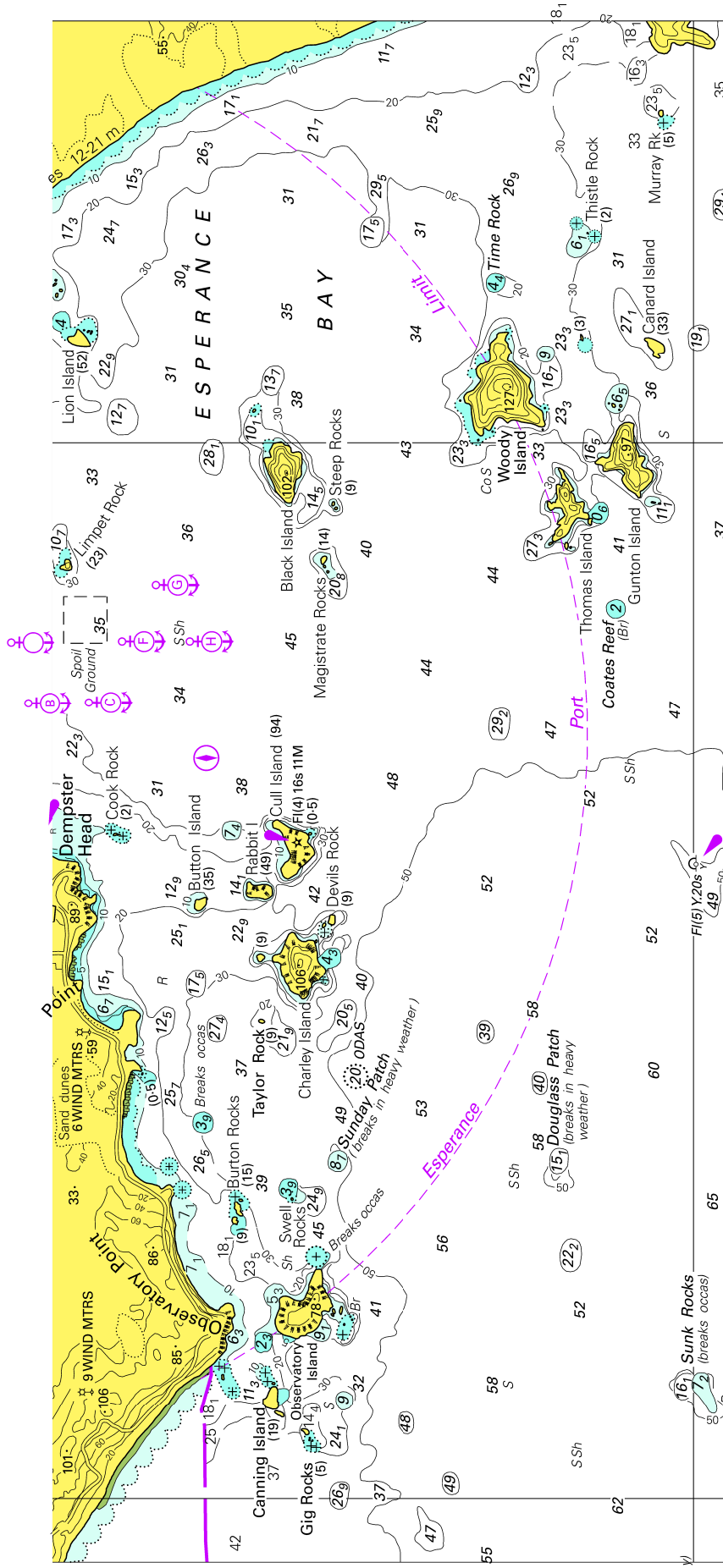
*Note for chart Aus 174*

To accompany Australian Notice to Mariners 409/2017





To accompany Australian Notice to Mariners 409/2017



Block for Chart Aus 762

© Commonwealth of Australia 2017