

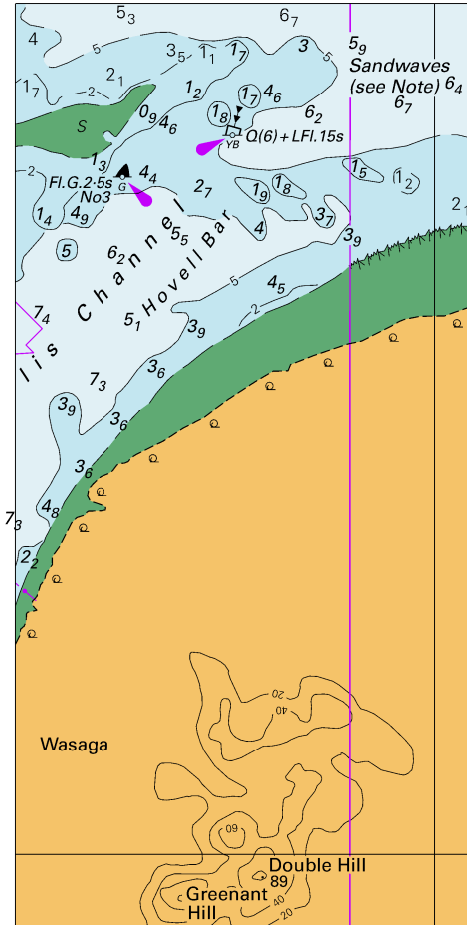
To accompany Australian Notice to Mariners 1014/2017

SANDWAVES

The seabed in this area consists of sandwaves which cause variations in actual depth to those charted. If mariners are unsure of the condition of the seabed in a particular area, local information should be sought prior to crossing.

Note for chart Aus 293

To accompany Australian Notice to Mariners 1014/2017



© Commonwealth of Australia 2017
Block for Chart Aus 293 (60.8 x 122.4mm)