



4 November 2016

Edition 22

Australian Notices to Mariners are the authority for correcting Australian Charts and Publications

AUSTRALIAN NOTICES TO MARINERS

Notices 1133 - 1166



Published fortnightly by the Australian Hydrographic Service

Commodore B.K. BRACE RAN
Hydrographer of Australia

SECTIONS.

- I. **Australian Notices to Mariners, including blocks and notes.**
- II. **Hydrographic Reports.**
- III. **Navigational Warnings.**

SUPPLEMENTS.

- I. **Tracings**
- II. **Cumulative List of Australian Notices to Mariners.**
- III. **Cumulative List of Temporary and Preliminary Australian Notices to Mariners.**
- IV. **Temporary and Preliminary Notices in force.**
- V. **Amendments to Admiralty List of Lights and Fog Signals (Vol K), Radio Signals (NP 281(2), 282, 283(2), 285, 286(4)) and Sailing Directions (NP 9, 13, 14, 15, 33, 34, 35, 36, 39, 44, 51, 60, 61, 62, 100, 136).**

© Commonwealth of Australia 2016

This work is copyright. Apart from any use permitted under the Copyright Act 1968, no part may be reproduced by any process, adapted, communicated or commercially exploited without prior written permission from The Commonwealth represented by the Australian Hydrographic Service.

IMPORTANT NOTICE

This edition of Notices to Mariners includes all significant information affecting AHS products which the AHS has become aware of since the last edition. All reasonable efforts have been made to ensure the accuracy and completeness of the information, including third party information, on which these updates are based. The AHS regards third parties from which it receives information as reliable, however the AHS cannot verify all such information and errors may therefore exist. The AHS does not accept liability for errors in third party information.

GENERAL INSTRUCTIONS

The substance of these notices should be inserted on the charts affected.

Bearings are referred to the true compass and are reckoned clockwise from North; those relating to lights are given as seen by an observer from seaward.

Positions quoted in notices relate to WGS84 which is the horizontal datum for all charts produced by the Australian Hydrographic Service.

The range quoted for a light is its nominal range.

Depths are with reference to the chart datum of each chart. Heights are above mean high water springs or mean higher high water, as appropriate.

The capital letter (P) or (T) after the number of any notice denotes a preliminary or temporary notice respectively, which are contained separately at the end of the permanent notices.

A star (*) adjacent to the number of a notice indicates that the notice is based on original information.

REPORTING OF DANGERS

Mariners are particularly requested to notify the AUSTRALIAN HYDROGRAPHIC SERVICE, Locked Bag 8801 Wollongong, NSW 2500 (Fax 02-4223 6599, e-mail datacentre@hydro.gov.au or, alternatively by filling in and submitting the [Hydrographic Notes](#) forms located on the web site – www.hydro.gov.au), immediately on the discovery of new dangers or suspected dangers to navigation. For changes or defects in aids to navigation notify AusSAR (Fax 02-6230 6868 or email rccaus@amsa.gov.au).

AUTHORISED USE

Copies of Australian notices are available free of charge from the Australian Hydrographic Service (AHS) website (www.hydro.gov.au) and through the eNotices (email) service (www.hydro.gov.au/enotices/enotices.htm).

Individual Notices may be copied for the purpose of inserting Notice substance on official charts and publications. Paper copies may be printed by chart agents and distributed to customers on a cost recovery basis. Participating chart agents are listed on the AHS website as providing a 'Paper Notices to Mariners' service (www.hydro.gov.au/webapps/jsp/agents/agents-list.jsp). Copies of the notices may not be sold for profit without prior written agreement.

NUMERICAL INDEX OF NOTICES TO MARINERS

Edition No 22

Notices	Aus Chart, INT Chart, ENC Cell, AHP, BA Pubs
1133	Products - New Charts, New Editions, Withdrawn Charts
1134	Products- New Charts and New Editions to be published shortly
1135	Amendment to Seafarers Handbook for Australian Waters AHP20
1136	Aus 194
1137	Aus 222, 812, 813
1138	Aus 828, 829
1139	Aus 235, 236
1140	Aus 387
1141	Aus 29
1142	Aus 25, 26, 27
1143	Aus 69
1144	Aus 37, 320, 730
1145	Aus 753
1146	Aus 328, 4723, INT 723
1147	Aus 328, 743, 744
1148	Aus 37, 320, 729, 730
1149	Aus 343, 485, 776
1150	Aus 181, 182
1151	Aus 154
1152	Aus 173
1153(T)	Aus 814
1154(T)	Aus 244, 245, 271
1155(T)	Aus 814, 815, 4635, 4643, INT 635, 643
1156(T)	Aus 521, 644, 4620, 4621, INT 620, 621
1157(T)	Aus 379, 4603, 4620, INT 603, 620
1158(T)	Aus 326, 4722, INT 722
1159(T)	Aus 325, 326, 4722, INT 722
1160(T)	Aus 319, 320, 4721, 4722, INT 721, 722
1161(T)	Aus 319, 320, 322, 4721, 4722, INT 721, 722
1162(T)	Aus 69
1163(T)	Aus 328, 4723, INT 723
1164(T)	Aus 327, 4723, INT 723
1165(T)	Aus 158
1166(T)	Aus 153

NUMERICAL INDEX OF CHARTS AFFECTED

Edition No 22

Aus Chart	Notices	INT Chart	Notices
Aus 25	1142	INT 603	1157(T)
Aus 26	1142	INT 620	1156(T), 1157(T)
Aus 27	1142	INT 621	1156(T)
Aus 29	1141	INT 635	1155(T)
Aus 37	1144, 1148	INT 643	1155(T)
Aus 69	1143, 1162(T)	INT 721	1160(T), 1161(T)
Aus 153	1166(T)	INT 722	1158(T), 1159(T), 1160(T), 1161(T)
Aus 154	1151	INT 723	1146, 1163(T), 1164(T)
Aus 158	1165(T)		
Aus 173	1152		
Aus 181	1150		
Aus 182	1150		
Aus 194	1136		
Aus 222	1137		
Aus 235	1139		
Aus 236	1139		
Aus 244	1154(T)		
Aus 245	1154(T)		
Aus 271	1154(T)		
Aus 319	1160(T), 1161(T)		
Aus 320	1144, 1148, 1160(T), 1161(T)		
Aus 322	1161(T)		
Aus 325	1159(T)		
Aus 326	1158(T), 1159(T)		
Aus 327	1164(T)		
Aus 328	1146, 1147, 1163(T)		
Aus 343	1149		
Aus 379	1157(T)		
Aus 387	1140		
Aus 485	1149		
Aus 521	1156(T)		
Aus 644	1156(T)		
Aus 729	1148		
Aus 730	1144, 1148		
Aus 743	1147		
Aus 744	1147		
Aus 753	1145		
Aus 776	1149		
Aus 812	1137		
Aus 813	1137		
Aus 814	1153(T), 1155(T)		
Aus 815	1155(T)		
Aus 828	1138		
Aus 829	1138		
Aus 4603	1157(T)		
Aus 4620	1156(T), 1157(T)		
Aus 4621	1156(T)		
Aus 4635	1155(T)		
Aus 4643	1155(T)		
Aus 4721	1160(T), 1161(T)		
Aus 4722	1158(T), 1159(T), 1160(T), 1161(T)		
Aus 4723	1146, 1163(T), 1164(T)		

1133 AUSTRALIA - Products - New Charts, New Editions, Withdrawn Charts

Australian Hydrographic Service (AA924162)

New Charts

<i>Chart</i>	<i>Title and Geographical limits</i>	<i>Scale</i>	<i>Publication Date</i>	<i>Remarks</i>
Aus 64	Australia - West Coast - Western Australia - Approaches to Port of Ashburton and Onslow 21° 15'·5 S – 21° 43'·5 S 114° 55'·0 E – 115° 13'·9 E	1:50 000	4 November 2016	New chart with general updating throughout; including coastline, infrastructure and new bathymetric data. Chart Aus 64 Edition 1 dated 22 February 2002 is now withdrawn from use.

New Electronic Navigation Chart (Aus ENC)

<i>Cell Name</i>	<i>Title</i>	<i>Publication Date</i>	<i>Remarks</i>
NIL			

New Editions and Withdrawn Charts

<i>Chart</i>	<i>Title</i>	<i>Scale</i>	<i>Publication Date</i>	<i>Remarks</i>
Aus 81 Edition 4	Australia - West Coast - Western Australia - Approaches to Geraldton Plan: Port of Geraldton	1:25 000 1:7 500	4 November 2016	New edition with general updating throughout; including coastline, infrastructure and new bathymetric data. Chart Aus 81 Edition 3 dated 9 May 2014 is now superseded and must be withdrawn from use.
Aus 622 Edition 2	Papua New Guinea - South Coast - Port Moresby Plan: Port Moresby and Napa Napa Wharves	1:15 000 1:7 500	4 November 2016	New edition with general updating throughout; including coastline, infrastructure and new bathymetric data. Chart Aus 622 Edition 1 dated 12 November 2004 is now superseded and must be withdrawn from use.
Aus 627 Edition 2	Papua New Guinea - North East Coast - Jomard Entrance	1:75 000	4 November 2016	New edition with general updating throughout; including new bathymetric data. Chart Aus 627 Edition 1 dated 5 June 2015 is now superseded and must be withdrawn from use.
Aus 679 Edition 2	Papua New Guinea - New Britain - Duke of York Group Plan: Mioko Harbour	1:37 500 12 500	4 November 2016	New edition with general updating throughout; including coastline, infrastructure and new bathymetric data. Chart Aus 679 Edition 1 dated 29 January 2010 is now superseded and must be withdrawn from use.

Chart permanently withdrawn

Charts listed above as withdrawn no longer meet chart carriage requirements and should be marked as "superseded" and replaced with the new chart/ new edition listed prior to passage through the area covered by the new chart.

When placing orders with a chart agent between notice of forthcoming edition and its publication, mariners should advise whether their order pertains to the current edition or the new edition.

For further details refer to the AHS website at www.hydro.gov.au for new edition and new chart stock arrival information.

1134 AUSTRALIA - Products- New Charts and New Editions to be published shortly
 Australian Hydrographic Service (AA920882, AA925262, AA925263)

New Charts to be published shortly

<i>Chart</i>	<i>Title</i>	<i>Scale</i>	<i>Expected Publication Date</i>	<i>Remarks</i>
NIL				

New Editions to be published shortly

<i>Chart</i>	<i>Title</i>	<i>Scale</i>	<i>Expected Publication Date</i>	<i>Remarks</i>
Aus 510	Papua New Guinea - North East Coast - Long Reef to Sudest Island	1:150 000	18 November 2016	New edition with general updating throughout; including new bathymetric data.
Aus 600	Australian Antarctic Territory - Approaches to Mawson Plan: Horseshoe Harbour	1:25 000	18 November 2016	New edition with general updating throughout; including new bathymetric data.
Aus 621	Papua New Guinea - South Coast - Approaches to Port Moresby	1:37 500	18 November 2016	New edition with general updating throughout; including coastline, infrastructure and new bathymetric data.

1135 AUSTRALIA - Product - Amendment to Seafarers Handbook for Australian Waters AHP20

Australian Maritime Safety Authority (AA926367), Torres Pilots Brisbane (AA904975)

Chapter 8 - Torres Pilots Pty Limited - contact table - page 131

Delete torres@avta.com.au
Insert operations@aviatorgroup.com.au

Chapter 8 - Traffic Separation Schemes

Replace page 136 with accompanying block

1136* AUSTRALIA - NEW SOUTH WALES - Port Kembla - Nav aids

NSW Roads and Maritime Services (SIRF2016006873)

Aus 194 [1020/2016]

Insert	blue conical mooring buoy	34° 28'.438 S	150° 54'.648 E
	blue conical mooring buoy	34° 28'.456 S	150° 54'.646 E
Delete	depth, 5,m	34° 28'.45 S	150° 54'.65 E
	buoy	34° 28'.44 S	150° 54'.66 E
	buoy	34° 28'.48 S	150° 54'.65 E

1137* AUSTRALIA - NEW SOUTH WALES - Yamba - Wreck; pilot boarding place
NSW Roads and Maritime Services (SIRF2016007083)

Aus 222 [802/2016]

Insert safe clearance depth, 22m, enclosed by danger circle with legend, *Wk* 29° 25'.690 S 153° 23'.766 E

Aus 812 [333/2016]

Insert safe clearance depth, 22m, enclosed by danger circle with legend, *Wk* 29° 25'.69 S 153° 23'.77 E

Delete depth, 23₈m 29° 25'.6 S 153° 23'.4 E
pilot boarding place with legend South 29° 25'.8 S 153° 23'.2 E

Aus 813 [538/2016]

Insert safe clearance depth, 22m, enclosed by danger circle with legend, *Wk* 29° 25'.69 S 153° 23'.77 E

Delete depth, 23₈m 29° 25'.6 S 153° 23'.4 E
pilot boarding place with legend South 29° 26'.0 S 153° 22'.8 E

1138* AUSTRALIA - QUEENSLAND - Britomart Reef to Hall-Thompson Reef - Depths
LADS Flight (SIRF2016007243)

Aus 828 [282/2016]

Insert depth, 26₉m, enclosed by contour 18° 14'.58 S 146° 49'.44 E
depth, 16₂m, enclosed by contour 18° 10'.95 S 146° 46'.83 E
depth, 8₃m, enclosed by contour 18° 09'.77 S 146° 47'.71 E
rock which covers and uncovers enclosed by danger circle 18° 05'.39 S 146° 46'.16 E

Substitute depth, 3₁m, for depth, 4₇m 18° 04'.8 S 146° 45'.8 E

Delete depth, 35m 18° 14'.5 S 146° 49'.2 E
depth, 21₇m 18° 11'.2 S 146° 46'.6 E
depth, 5₇m 18° 05'.4 S 146° 46'.0 E

Aus 829 [234/2016]

Insert depth, 8₃m, enclosed by contour 18° 09'.77 S 146° 47'.71 E
rock which covers and uncovers enclosed by danger circle 18° 05'.39 S 146° 46'.16 E
depth, 16₃m, enclosed by contour 17° 46'.84 S 146° 29'.67 E

Substitute depth, 3₁m, for depth, 4₇m 18° 04'.8 S 146° 45'.8 E
depth, 5₇m, for depth, 7₁m 17° 38'.9 S 146° 23'.5 E
depth, 4₇m, enclosed by contour for depth, 6₉m 17° 37'.9 S 146° 24'.7 E

Delete depth, 5₇m 18° 05'.4 S 146° 46'.0 E

1139* AUSTRALIA - QUEENSLAND - Moreton Bay - Spitfire Channel - Light beacon; light buoys
Maritime Safety Queensland Notice 405/2016, 406(T)/2016, 407/2016 (SIRF2016006693, SIRF2016006694, SIRF2016006695, SIRF2016006797, SIRF2016007016)

Aus 235 [954/2016]

Insert accompanying block 27° 03'.0 S 153° 16'.5 E

Aus 236 [1105/2016]

Insert accompanying block 27° 03'.7 S 153° 16'.6 E

1140* PAPUA NEW GUINEA - Schlangen Harbour - Light beacon
National Maritime Safety Authority PNG Notice 50/2016 (SIRF2016006478)

Aus 387 [288/2016]

Delete light beacon 5° 57'.3 S 147° 11'.5 E

1141* AUSTRALIA - NORTHERN TERRITORY - Charles Point - Depths; legend

Australian Hydrographic Service (AA889041)

Aus 29 [869/2016]

Insert accompanying block 12° 21'.0 S 130° 37'.0 E

Delete legend Adjoining Chart Aus 26 in N border 12° 18'.0 S 130° 35'.0 E

1142* AUSTRALIA - NORTHERN TERRITORY - Darwin - Channel Island to Lee Point - Light buoys

Department of Infrastructure, Planning and Logistics NT Notice 88(T)/2016 (SIRF2016006751)

Aus 25 [NC 29/7/2016]

Delete light buoy 12° 28'.14 S 130° 46'.09 E

light buoy 12° 26'.16 S 130° 46'.22 E

light buoy 12° 25'.96 S 130° 48'.92 E

light buoy 12° 24'.02 S 130° 41'.33 E

light buoy 12° 20'.25 S 130° 51'.27 E

light buoy 12° 19'.08 S 130° 54'.77 E

Aus 26 [NC 29/7/2016]

Delete light buoy 12° 29'.29 S 130° 48'.04 E

light buoy 12° 28'.14 S 130° 46'.09 E

Aus 27 [NE 8/5/2015]

Delete light buoy 12° 32'.83 S 130° 52'.58 E

1143* AUSTRALIA - WESTERN AUSTRALIA - Ashburton - Infrastructure; nav aids

Pilbara Ports Authority (SIRF2016007002)

Aus 69 (plan, Port of Ashburton) [704/2016]

Insert accompanying block A 21° 39'.0 S 115° 00'.8 E

accompanying block B 21° 40'.5 S 115° 00'.6 E

1144* AUSTRALIA - WESTERN AUSTRALIA - Brunswick Bay - Depths; rockHMAS *Leeuwin* (SIRF2016007201, SIRF2016007215)**Aus 37 [1109/2016]**

Delete rock and enclosing danger circle with legend, Rep (1987) PA 15° 08'.1 S 124° 47'.7 E

Aus 320 [1109/2016]Insert depth, 3_gm, and extend contour N to enclose 15° 01'.08 S 124° 45'.74 E

Delete rock and enclosing danger circle with legend, Rep (1987) PA 15° 08'.1 S 124° 47'.7 E

depth, 13₃m 15° 01'.6 S 124° 45'.7 E**Aus 730 [1109/2016]**Insert depth, 3_gm, enclosed by contour 15° 01'.08 S 124° 45'.74 EDelete depth, 18₂m 15° 01'.2 S 124° 46'.0 E

rock and enclosing danger circle with legend, Rep (1987) PA 15° 08'.1 S 124° 47'.7 E

1145* AUSTRALIA - WESTERN AUSTRALIA - Leeman - Light; bearing

Department of Transport WA (SIRF2016006332)

Aus 753 [289/2016]

Amend light to Oc.3-5s 16m 9M 29° 56'.6 S 114° 58'.7 E

bearing to 116.3° 29° 54'.3 S 114° 53'.7 E

1146* AUSTRALIA - WESTERN AUSTRALIA - Montebello Islands - Platform withdrawn northwestwards

Former Notice - 993(T)/2016 is cancelled
Woodside Energy Ltd (SIRF2016007091)

Aus 328 [1069/2016]

Delete	lit platform, Mo(U)15s	20° 03'.6 S	115° 11'.6 E
--------	------------------------	-------------	--------------

Aus 4723 (INT 723) [1069/2016]

Delete	lit platform with legend, Balnaves	20° 03'.6 S	115° 11'.6 E
--------	------------------------------------	-------------	--------------

1147* AUSTRALIA - WESTERN AUSTRALIA - Montebello Islands - Chart limits; ZOC diagram; chart note

Australian Hydrographic Service (AA915113), Department of Transport WA (SIRF2016007351)

Aus 328 [1146/2016]

Delete	note, RESTRICTED AREA THEVENARD ISLAND	21° 56'.8 S	115° 04'.0 E
	legend, Restricted Area (see Note)	21° 22'.8 S	115° 04'.8 E

Aus 743 [1027/2016]

Insert	magenta limits, with legend <i>Aus 64</i> in NE corner, between	21° 43'.5 S	114° 55'.0 E
		21° 43'.5 S	115° 13'.9 E
		21° 15'.5 S	115° 13'.9 E
		21° 15'.5 S	114° 55'.0 E
		21° 43'.5 S	114° 55'.0 E
	accompanying block	21° 35'.0 S	116° 03'.0 E

Delete	magenta limits, with legend <i>Aus 62</i> , centred on magenta limits, with legend <i>Aus 64</i> , centred on note, RESTRICTED AREA THEVENARD ISLAND legend, Restricted Area (see Note)	20° 49'.0 S	115° 36'.0 E
		21° 27'.0 S	115° 00'.0 E
		21° 22'.8 S	116° 08'.5 E
		21° 24'.3 S	115° 02'.3 E

Aus 744 [1069/2016]

Insert	magenta limits, with legend <i>Aus 64</i> in NW corner, between	21° 43'.50 S	114° 59'.37 E
		21° 43'.50 S	114° 55'.00 E
		21° 15'.50 S	114° 55'.00 E
		21° 15'.50 S	114° 59'.37 E
		22° 23'.0 S	114° 54'.5 E
	accompanying block		

Delete	magenta limits, with legend <i>Aus 64</i> , centred on	21° 27'.0 S	114° 53'.0 E
--------	--	-------------	--------------

1148* AUSTRALIA - WESTERN AUSTRALIA - York Sound - Depths; rock
 HMAS *Benalla* (SIRF2016006824)

Aus 37 [1144/2016]

Insert	depth, 3 ₆ m, enclosed by contour	14° 53'.47 S	125° 09'.00 E
	rock which covers and uncovers enclosed by danger circle	14° 55'.29 S	125° 09'.80 E
	depth, 2 ₉ m, enclosed by contour	14° 56'.28 S	125° 09'.07 E
Delete	depth, 9 ₁ m	14° 55'.3 S	125° 09'.9 E
	depth, 7 ₈ m	14° 56'.3 S	125° 09'.1 E

Aus 320 [1144/2016]

Insert	depth, 3 ₆ m, enclosed by contour	14° 53'.47 S	125° 09'.00 E
	rock which covers and uncovers enclosed by danger circle	14° 55'.29 S	125° 09'.80 E
Substitute	depth, 2 ₉ m, for depth, 7 ₉ m	14° 56'.3 S	125° 09'.1 E
Delete	depth, 9 ₁ m, and enclosing contour	14° 55'.3 S	125° 09'.9 E

Aus 729 [832/2015]

Insert	depth, 3 ₆ m, enclosed by contour	14° 53'.47 S	125° 09'.00 E
	rock which covers and uncovers enclosed by danger circle	14° 55'.29 S	125° 09'.80 E
	depth, 2 ₉ m, enclosed by contour	14° 56'.28 S	125° 09'.07 E
Delete	depth, 7 ₉ m	14° 56'.3 S	125° 09'.1 E

Aus 730 [1144/2016]

Insert	depth, 3 ₆ m, enclosed by contour	14° 53'.47 S	125° 09'.00 E
	rock which covers and uncovers enclosed by danger circle	14° 55'.29 S	125° 09'.80 E
	depth, 2 ₉ m, enclosed by contour	14° 56'.28 S	125° 09'.07 E
Delete	depth, 9 ₁ m	14° 55'.3 S	125° 09'.9 E
	depth, 7 ₉ m	14° 56'.3 S	125° 09'.1 E

1149* AUSTRALIA - SOUTH AUSTRALIA - Williams Island - Light
 Australian Maritime Safety Authority Final ATH 84/2016 (SIRF2016007137)

Aus 343 [393/2016]

Amend	light range to 10M	35° 01'.7 S	135° 58'.3 E
-------	--------------------	-------------	--------------

Aus 485 [876/2016]

Amend	light range to 10M	35° 01'.7 S	135° 58'.3 E
-------	--------------------	-------------	--------------

Aus 776 [393/2016]

Amend	light range to 10M	35° 01'.7 S	135° 58'.3 E
-------	--------------------	-------------	--------------

1150* AUSTRALIA - VICTORIA - Port Albert Entrance - Depth
 Gippsland Ports (SIRF2016007175)

Aus 181 [820/2016]

Insert	depth, 1 ₉ m, enclosed by contour	38° 44'.18 S	146° 42'.21 E
--------	--	--------------	---------------

Aus 182 (plan, Approaches to Port Albert) [879/2016]

Insert	depth, 1 ₉ m, enclosed by contour	38° 44'.178 S	146° 42'.211 E
--------	--	---------------	----------------

1151* AUSTRALIA - VICTORIA - Port Phillip - Webb Dock - Depths; infrastructure; nav aids

Former Notice - 851(T)/2016 is cancelled

Port of Melbourne Corporation Notice 304(T)/2016 (SIRF2016005640, SIRF2016007328)

Aus 154 [396/2016]

Insert	accompanying block	37° 50'.9 S	144° 54'.7 E
--------	--------------------	-------------	--------------

1152* AUSTRALIA - TASMANIA - D'Entrecasteaux Channel - Dover - Pipeline
Marine and Safety Tasmania Notice M176/2016 (SIRF2016007013)

Aus 173 [557/2016]

Insert intake pipeline between

43° 19'.21 S	147° 00'.50 E
43° 19'.27 S	147° 00'.62 E

1153(T)/2016 AUSTRALIA - QUEENSLAND - Burleigh Head - Scientific instruments

Former Notice - 768(T)/2016 is cancelled

Maritime Safety Queensland Notice 440(T)/2016 (SIRF2016007210)

Special light buoys, *Fl(5)Y.20s*, exist in positions 28° 06'.42 S 153° 28'.38 E and 28° 05'.96 S 153° 29'.07 E.

Chart temporarily affected - Aus 814**1154(T)/2016 AUSTRALIA - QUEENSLAND - Gladstone - Clinton Channel - Diving operations**

Date - Until 18 November 2016

Maritime Safety Queensland Notice 450(T)/2016 (SIRF2016007331)

Diving operations are in progress in an area bounded by the following positions:

23° 48'.49S 151° 14'.11 E

23° 49'.04S 151° 14'.63 E

23° 49'.15S 151° 14'.74 E

23° 49'.37S 151° 15'.07 E

23° 49'.02S 151° 14'.77 E

23° 48'.54S 151° 14'.23 E.

MV *Revision* is on site and will display appropriate lights and shapes and will monitor VHF Ch 13, Ch 14 and Ch 16.

Mariners are advised to navigate with caution in the area.

Chart temporarily affected - Aus 244 - Aus 245 - Aus 271**1155(T)/2016 AUSTRALIA - CORAL SEA - Queensland Guyot - Underwater operations**

Australian Maritime Safety Authority Auscoast Warning 305/2016 (SIRF2016007336)

RV *Investigator* is conducting underwater operations in an area bounded by the following positions:

27° 30'.0 S 153° 45'.0 E

27° 30'.0 S 155° 45'.0 E

27° 00'.0 S 155° 45'.0 E

27° 00'.0 S 153° 45'.0 E.

Mariners are advised to navigate with caution in the area. 4M clearance requested.

Chart temporarily affected - Aus 814 - Aus 815 - Aus 4635 (INT 635) - Aus 4643 (INT 643)**1156(T)/2016 PAPUA NEW GUINEA - Oro Bay - Light relit**

Former Notice - 980(T)/2016 is cancelled

National Maritime Safety Authority PNG Notice 53/2016 (SIRF2016007049)

Cancel this notice on receipt.

Chart formerly affected - Aus 521 - Aus 644 - Aus 4620 (INT 620) - Aus 4621 (INT 621)**1157(T)/2016 PAPUA NEW GUINEA - Yule Island - Light relit**

Former Notice - 933(T)/2016 is cancelled

National Maritime Safety Authority PNG Notice 48/2016 (SIRF2016006478)

Cancel this notice on receipt.

Chart formerly affected - Aus 379 - Aus 4603 (INT 603) - Aus 4620 (INT 620)**1158(T)/2016 AUSTRALIA - WESTERN AUSTRALIA - Bedout Island - Drill rig northwestwards**

Quadrant Energy (SIRF2016007229), MODU *Ocean Monarch* (SIRF2016007294)

Drill rig *Ocean Monarch* is conducting drilling operations in position 18° 43'.35 S 118° 43'.38 E.

Chart temporarily affected - Aus 326 - Aus 4722 (INT 722)

1159(T)/2016 AUSTRALIA - WESTERN AUSTRALIA - Bedout Island - Drill rig northwestwards moved
Former Notice - 721(T)/2016 is cancelled
 Quadrant Energy (SIRF20167229)

Cancel this notice on receipt.

Chart formerly affected - Aus 325 - Aus 326 - Aus 4722 (INT 722)

1160(T)/2016 AUSTRALIA - WESTERN AUSTRALIA - Browse Island - Drill rig northwestwards
 MODU *ENSCO 5006* (SIRF2016007361)

Drill rig *ENSCO 5006* is conducting drilling operations in position 13° 52'.76 S 123° 19'.07 E.

Chart temporarily affected - Aus 319 - Aus 320 - Aus 4721 (INT 721) - Aus 4722 (INT 722)

1161(T)/2016 AUSTRALIA - WESTERN AUSTRALIA - Browse Island - Drill rig northwestwards moved
Former Notice - 611(T)/2016 is cancelled
 MODU *ENSCO 5006* (SIRF2016007361)

Cancel this notice on receipt.

Chart formerly affected - Aus 319 - Aus 320 - Aus 322 - Aus 4721 (INT 721) - Aus 4722 (INT 722)

1162(T)/2016 AUSTRALIA - WESTERN AUSTRALIA - Onslow - Beadon Creek - Scientific instruments
Former Notice - 1090(T)/2016 is cancelled
Date - Until 30 June 2017
 Department of Transport WA Notice 108/2016 (SIRF2016007182)

Scientific instruments marked by orange buoys exist in the following positions:

21° 38'.37 S 115° 07'.97 E
 21° 38'.53 S 115° 07'.92 E
 21° 38'.67 S 115° 07'.92 E
 21° 38'.73 S 115° 07'.89 E
 21° 38'.87 S 115° 07'.94 E
 21° 39'.21 S 115° 07'.92 E.

Chart temporarily affected - Aus 69

1163(T)/2016 AUSTRALIA - WESTERN AUSTRALIA - Rankin Bank - Subsea operations southwestwards
 Technip (SIRF2016007199)

MV *Deep Orient* and support vessels *Miclyn Monarch 1*, *Westsea 98*, *Mermaid Searcher* and *Bhagwan Stallion* will commence subsea operations on 10 November 2016 in position 19° 54'.18 S 115° 16'.67 E.

Chart temporarily affected - Aus 328 - Aus 4723 (INT 723)

1164(T)/2016 AUSTRALIA - WESTERN AUSTRALIA - Rankin Bank - Drill rig eastwards
Former Notice - 728(T)/2016 is cancelled
 Woodside Energy Ltd (SIRF2016007115), MODU *Atwood Osprey* (SIRF2016007346)

Drill rig *Atwood Osprey* is conducting drilling operations in position 19° 45'.47 S 115° 47'.12 E.

Chart temporarily affected - Aus 327 - Aus 4723 (INT 723)

1165(T)/2016 AUSTRALIA - VICTORIA - Port Phillip - Rye - Buoy off station
 Parks Victoria Notice 292(T)/2016 (SIRF2016007081)

The port lateral buoy (38° 22'.10 S 144° 49'.31 E) is off station.

Chart temporarily affected - Aus 158

1166(T)/2016 AUSTRALIA - VICTORIA - Port Phillip - Geelong - Barge

Date - Until 8 January 2017

Parks Victoria Notice 302(T)/2016 (SIRF2016007427)

A barge is moored in position 38° 08'.57 S 144° 21'.76 E.

Submerged cables marked by special buoys exist between the pier and the barge.

Mariners are advised to navigate with caution in the area.

Chart temporarily affected - Aus 153

HYDROGRAPHIC REPORTS

<i>Locality</i>	<i>Report</i>	<i>Ship/Authority</i>	<i>Observer</i>
QLD- Britomart Reef to Hall-Thompson Reef	Shoals	LADS Flight	
WA- Brunswick Bay	Shoals	HMAS <i>Leeuwin</i>	

III

NAVIGATION WARNINGS

The Australian Hydrographic Service will no longer compile Section III of the Australian Notices to Mariners. For the most up to date navigation warnings please refer to:

AMSA Navigation Warnings

<http://amsa.gov.au/search-and-rescue/distress-and-safety-comms/msi/msi-email/index.asp>

New Zealand Notices to Mariners (Navarea XIV warnings)

<http://www.linz.govt.nz/sea/maritime-safety/notices-mariners>

8.15a Traffic Separation Schemes

1. Australia has several Traffic Separation Schemes (TSS) approved by the IMO. Ships operating in or near these schemes must comply with *Rule 10 of the Regulations for Preventing Collisions at Sea 1972*.

Bass Strait

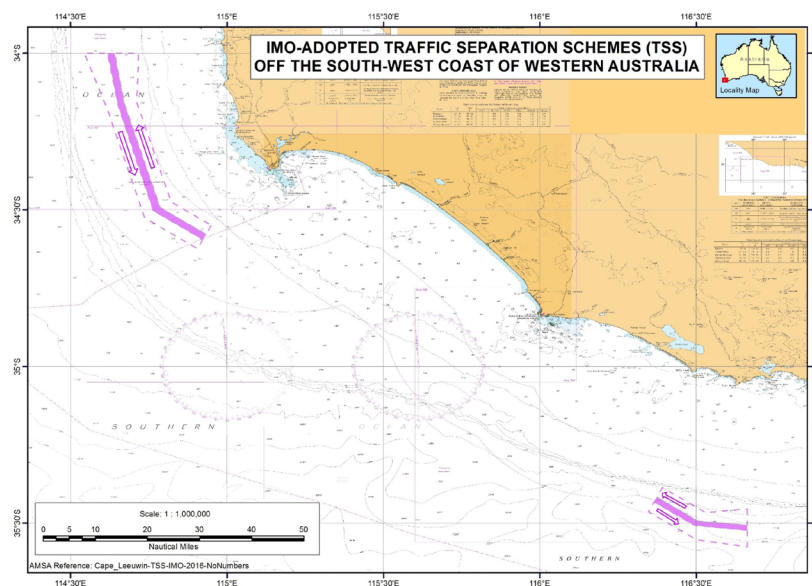
2. Australia's Bass Strait offshore oil fields lie across the main shipping track. Damage to a structure or pipeline could endanger many lives and seriously disrupt production. This TSS has been designed for the protection of installations in the Bass Strait area and for the safety of shipping. It consists of a 1.5 nautical miles wide separation zone and an eastbound and westbound shipping lane. An "Area to be Avoided" is declared, and should be avoided by ships of more than 200 GRT. See 8.21 - Areas to be Avoided.

South of Wilsons Promontory

3. This TSS has been designed for the safety of shipping. It consists of a separation zone encompassing islands and shoals, and an eastbound and westbound shipping lane. The area between Wilsons Promontory and the northern separation line is designated as an inshore traffic zone.

South West - Cape Leeuwin and Chatham Island

4. IMO has adopted two new TSS off the south-west coast of Australia which came into effect on 01 December 2016. Use of the two TSS, off Cape Leeuwin and Chatham Island, are recommended but not mandatory. See diagram below.



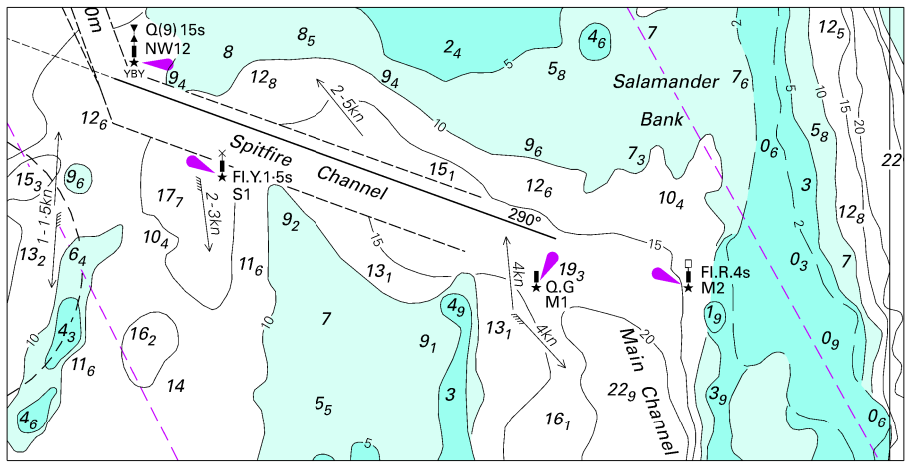
8.16 Two Way Routes

1. In 2015 three new Two Way Routes were approved by IMO:
 - Jomard Passage (south-east PNG)
 - Diamond Passage (Coral Sea)
 - West of Holmes Reef (Coral Sea)

8.16.1 Jomard Passage

1. The new routing measure came in to effect on 01 June 2015 at Jomard Strait. The majority of traffic through this entrance is from or bound for east Australian Ports. The Two Way Route is shown on ENC AU412152 and paper chart Aus 627 Edition 1 published on 05 June 2015.

To accompany Australian Notice to Mariners 1139/2016

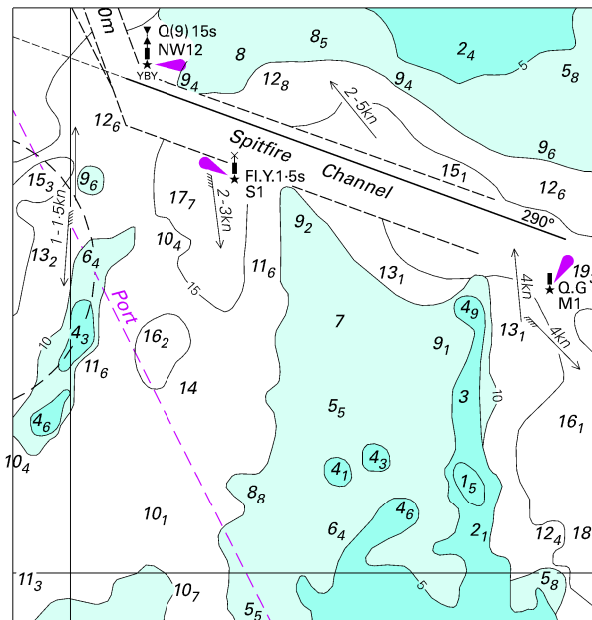


Block for Chart Aus 235

© Commonwealth of Australia 2016

(118.5 x 60.0mm)

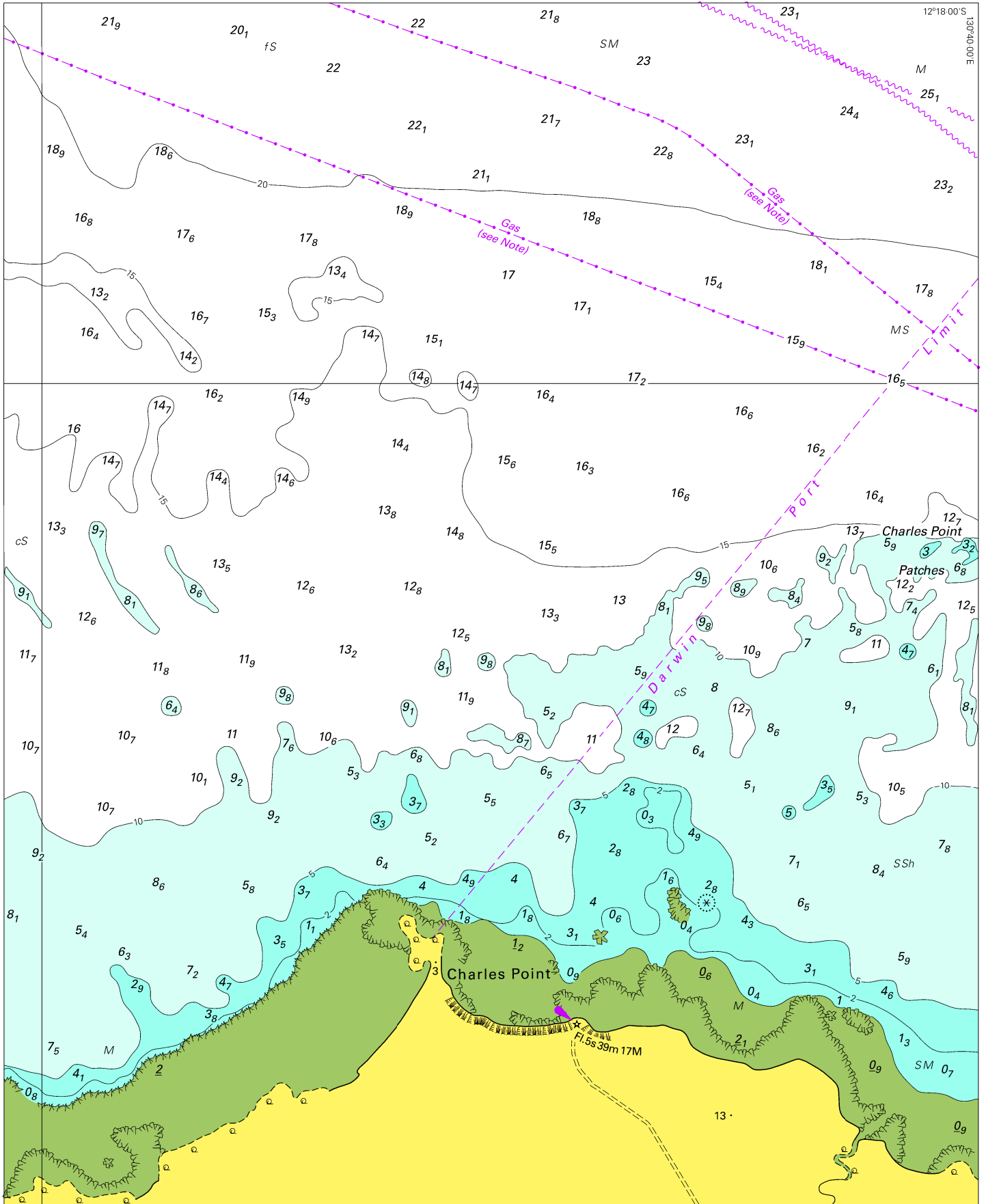
To accompany Australian Notice to Mariners 1139/2016



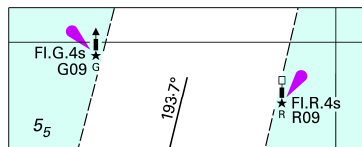
© Commonwealth of Australia 2016

Block for Chart Aus 236

(77.6 x 81.1mm)

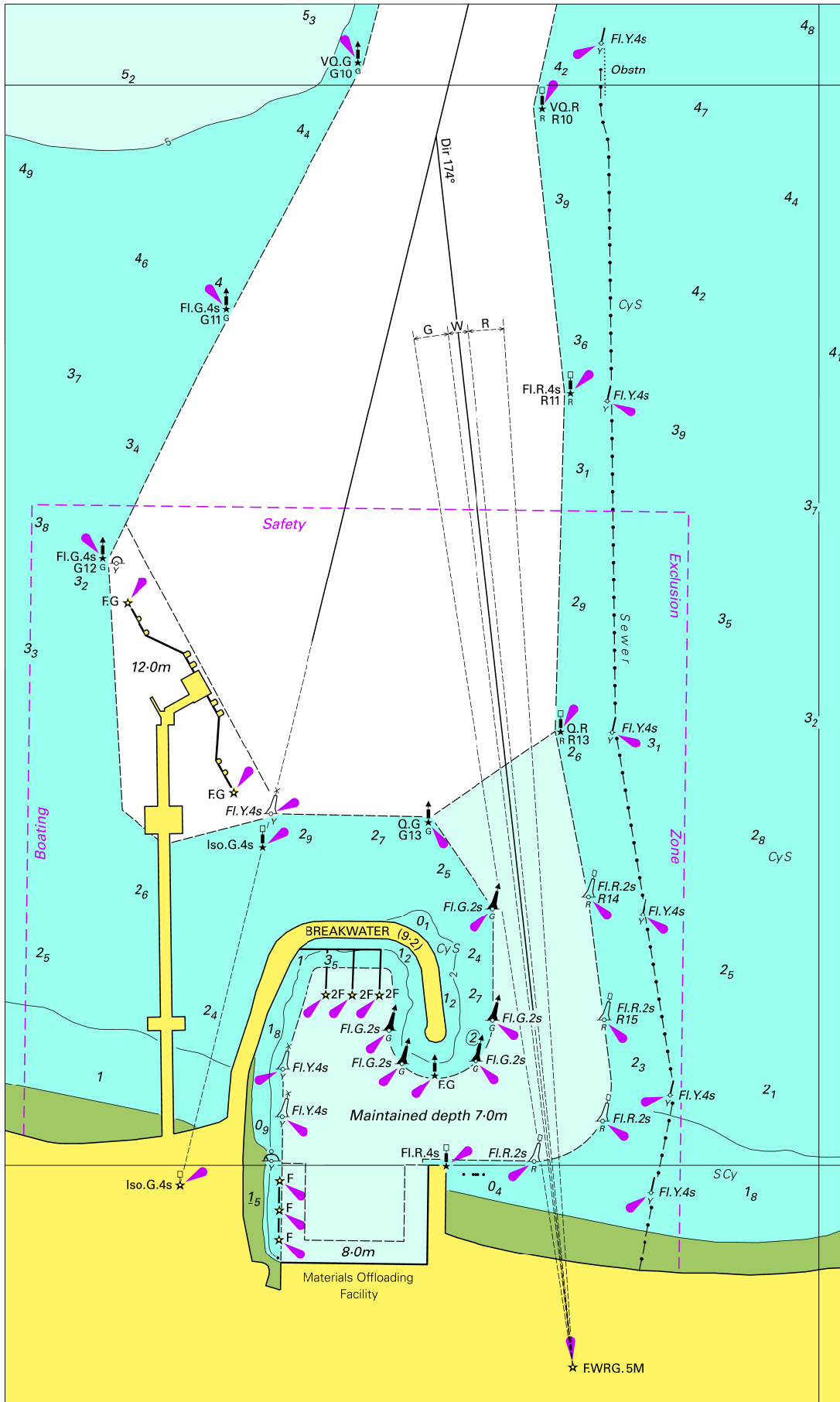


To accompany Australian Notice to Mariners 1143/2016



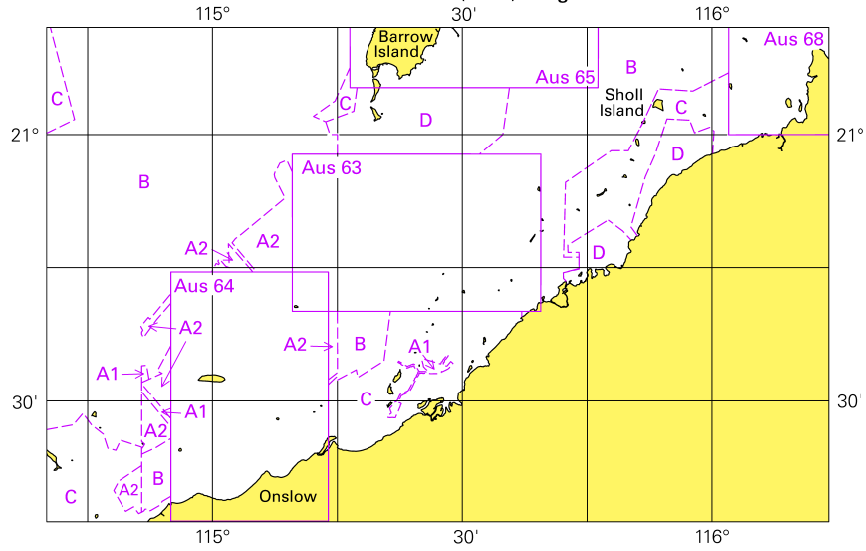
© Commonwealth of Australia 2016

Block A for Chart Aus 69 (47.6 x 18.8mm)



To accompany Australian Notice to Mariners 1147/2016

Zone of Confidence (ZOC) Diagram

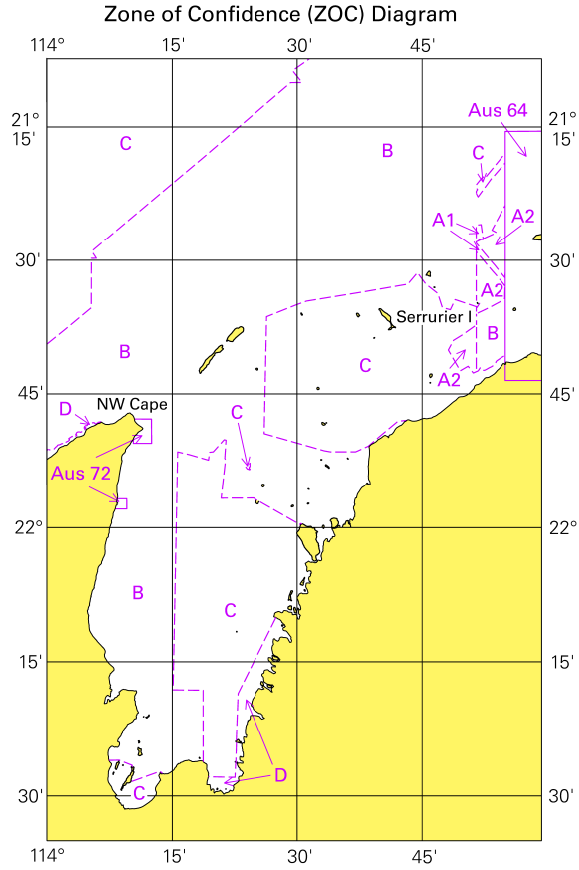


Block for Chart Aus 743

© Commonwealth of Australia 2016

(103-3 x 65-3mm)

To accompany Australian Notice to Mariners 1147/2016



© Commonwealth of Australia 2016

Block for Chart Aus 744

(65.3 x 103.5mm)

