



9 May 2014

Edition 9

Australian Notices to Mariners are the authority for correcting Australian Charts and Publications

AUSTRALIAN NOTICES TO MARINERS

Notices 437 - 475



Published fortnightly by the Australian Hydrographic Service

Commodore B.K. BRACE RAN
Hydrographer of Australia

SECTIONS.

- I. Australian Notices to Mariners, including blocks and notes.
- II. Hydrographic Reports.
- III. Navigational Warnings.

SUPPLEMENTS.

- I. Tracings
- II. Cumulative List of Australian Notices to Mariners.
- III. Cumulative List of Temporary and Preliminary Australian Notices to Mariners.
- IV. Temporary and Preliminary Notices in force.
- V. Amendments to Admiralty List of Lights and Fog Signals (Vol K), Radio Signals (NP 281(2), 282, 283(2), 285, 286(4)) and Sailing Directions (NP 9, 13, 14, 15, 33, 34, 35, 36, 39, 44, 51, 60, 61, 62, 100, 136).

© Commonwealth of Australia 2014

This work is copyright. Apart from any use permitted under the Copyright Act 1968, no part may be reproduced by any process, adapted, communicated or commercially exploited without prior written permission from The Commonwealth represented by the Australian Hydrographic Service.

IMPORTANT NOTICE

This edition of Notices to Mariners includes all significant information affecting AHS products which the AHS has become aware of since the last edition. All reasonable efforts have been made to ensure the accuracy and completeness of the information, including third party information, on which these updates are based. The AHS regards third parties from which it receives information as reliable, however the AHS cannot verify all such information and errors may therefore exist. The AHS does not accept liability for errors in third party information.

GENERAL INSTRUCTIONS

The substance of these notices should be inserted on the charts affected.

Bearings are referred to the true compass and are reckoned clockwise from North; those relating to lights are given as seen by an observer from seaward. Positions quoted in permanent notices relate to the horizontal datum for the chart(s). When preliminary or temporary notices affect multiple charts, positions will be provided in relation to only one horizontal datum and that datum will be specified. When the multiple charts do not have a common horizontal datum, mariners will be required to adjust the position(s) for those charts not on the specified datum. The range quoted for a light is its nominal range. Depths are with reference to the chart datum of each chart. Heights are above mean high water springs or mean higher high water, as appropriate.

The capital letter (P) or (T) after the number of any notice denotes a preliminary or temporary notice respectively, which are contained separately at the end of the permanent notices. A star (*) adjacent to the number of a notice indicates that the notice is based on original information.

REPORTING OF DANGERS

Mariners are particularly requested to notify the AUSTRALIAN HYDROGRAPHIC SERVICE, Locked Bag 8801 Wollongong, NSW 2500 (Fax 02-4223 6599, e-mail Hydro.NTM@defence.gov.au or, alternatively by filling in and submitting the [Hydrographic Notes](#) forms located on the web site – www.hydro.gov.au), immediately on the discovery of new dangers or suspected dangers to navigation. For changes or defects in aids to navigation notify AusSAR (Fax 02-6230 6868 or email rccaus@amsa.gov.au).

AUTHORISED USE

Copies of Australian notices are available free of charge from the Australian Hydrographic Service (AHS) website (www.hydro.gov.au) and through the eNotices (email) service (www.hydro.gov.au/enotices/enotices.htm).

Individual Notices may be copied for the purpose of inserting Notice substance on official charts and publications. Paper copies may be printed by chart agents and distributed to customers on a cost recovery basis. Participating chart agents are listed on the AHS website as providing a 'Paper Notices to Mariners' service (www.hydro.gov.au/prodserv/distributors/distributors.htm). Copies of the notices may not be sold for profit without prior written agreement.

NUMERICAL INDEX OF NOTICES TO MARINERS

Edition No 9

Notices	Aus Chart, INT Chart, ENC Cell, AHP, BA Pubs
437	Aus 81
438	Amendment to Australian National Tide Tables 2014
439	Aus 196, 198, 199
440	Aus 260, 822, AX 00260S, 00260T, 00822S
441	Aus 24
442	Aus 119
443	Aus 173, 795
444	Aus 172
445(T)	Aus 200, 202
446(T)	Aus 236, 237, 238
447(T)	Aus 832
448(T)	Aus 245, 246, 819
449(T)	Aus 235
450(T)	Aus 236
451(T)	Aus 235, 236, 237, 238, 814, 815
452(T)	Aus 256, 827
453(T)	Aus 248, 367, 490, 820, AX 00367S, 00820S
454(T)	Aus 391, 662, 4603, 4604, 4622, INT 603, 604, 622, AX 04603U, 04604U
455(T)	Aus 26, AX 00026T
456(T)	Aus 26, 309, 722, AX 00026T, 00309T, 00309U, 00722T
457(T)	Aus 24, 26, 28, AX 00026T
458(T)	Aus 64, 328, 743, 744
459(T)	Aus 57, 327, 741, 742, 4722, 4723, INT 722, 723, AX 04722U, 04723U
460(T)	Aus 62, 67, 327, 328, 742
461(T)	Aus 326, 4722, 4723, INT 722, 723, AX 04722U, 04723U
462(T)	Aus 327, 328
463(T)	Aus 328, 329, 334, 744, AX 00334S
464(T)	Aus 328, 329, 744
465(T)	Aus 52, 54
466(T)	Aus 137
467(T)	Aus 348
468(T)	Aus 343, 776, AX 00343S, 00776S
469(T)	Aus 133
470(T)	Aus 153, 157
471(P)	Aus 143, 155, 157
472(T)	Aus 143, 144, 158
473(T)	Aus 154
474(T)	Aus 152
475(T)	Aus 799

NUMERICAL INDEX OF CHARTS AFFECTED

Edition No 9

Aus Chart	Notices
Aus 24	441, 457(T)
Aus 26	455(T), 456(T), 457(T)
Aus 28	457(T)
Aus 52	465(T)
Aus 54	465(T)
Aus 57	459(T)
Aus 62	460(T)
Aus 64	458(T)
Aus 67	460(T)
Aus 81	437
Aus 119	442
Aus 133	469(T)
Aus 137	466(T)
Aus 143	471(P), 472(T)
Aus 144	472(T)
Aus 152	474(T)
Aus 153	470(T)
Aus 154	473(T)
Aus 155	471(P)
Aus 157	470(T), 471(P)
Aus 158	472(T)
Aus 172	444
Aus 173	443
Aus 196	439
Aus 198	439
Aus 199	439
Aus 200	445(T)
Aus 202	445(T)
Aus 235	449(T), 451(T)
Aus 236	446(T), 450(T), 451(T)
Aus 237	446(T), 451(T)
Aus 238	446(T), 451(T)
Aus 245	448(T)
Aus 246	448(T)
Aus 248	453(T)
Aus 256	452(T)
Aus 260	440
Aus 309	456(T)
Aus 326	461(T)
Aus 327	459(T), 460(T), 462(T)
Aus 328	458(T), 460(T), 462(T), 463(T), 464(T)
Aus 329	463(T), 464(T)
Aus 334	463(T)
Aus 343	468(T)
Aus 348	467(T)
Aus 367	453(T)
Aus 391	454(T)
Aus 490	453(T)
Aus 662	454(T)
Aus 722	456(T)
Aus 741	459(T)
Aus 742	459(T), 460(T)
Aus 743	458(T)
Aus 744	458(T), 463(T), 464(T)

Aus Chart	Notices
Aus 776	468(T)
Aus 795	443
Aus 799	475(T)
Aus 814	451(T)
Aus 815	451(T)
Aus 819	448(T)
Aus 820	453(T)
Aus 822	440
Aus 827	452(T)
Aus 832	447(T)
Aus 4603	454(T)
Aus 4604	454(T)
Aus 4622	454(T)
Aus 4722	459(T), 461(T)
Aus 4723	459(T), 461(T)
AX 00026T	455(T), 456(T), 457(T)
AX 00260S	440
AX 00260T	440
AX 00309T	456(T)
AX 00309U	456(T)
AX 00334S	463(T)
AX 00343S	468(T)
AX 00367S	453(T)
AX 00722T	456(T)
AX 00776S	468(T)
AX 00820S	453(T)
AX 00822S	440
AX 04603U	454(T)
AX 04604U	454(T)
AX 04722U	459(T), 461(T)
AX 04723U	459(T), 461(T)

INT Chart	Notices
INT 603	454(T)
INT 604	454(T)
INT 622	454(T)
INT 722	459(T), 461(T)
INT 723	459(T), 461(T)

437 AUSTRALIA - Product

Australian Hydrographic Service (AA737829), UKHO (AA739393)

New Edition

<i>Chart</i>	<i>Published</i>	<i>Title and description of amendments</i>	<i>Scale</i>	<i>Index Chart</i>	<i>Price</i>
Aus 81	9/5/2014	Australia – West Coast – Western Australia - Approaches to Geraldton 28° 39'·3 S – 28° 48'·0 S 114° 27'·4 E – 114° 37'·4 E Plan: Port of Geraldton 28° 45'·03 S – 28° 46'·90 S 114° 34'·00 E – 114° 37'·00 E <i>New edition with general updating throughout; includes new declared anchorages and amendments to nav aids.</i>	1:25 000 1:7 500	Aus 5001	\$35.00

Admiralty publication

<i>NP No</i>	<i>Title</i>	<i>Date</i>	<i>Remarks</i>
NP13 & e-NP13	Australia Pilot Volume 1 (Fourth Edition) 2014.	15/05/2014	The third edition 2011 is cancelled.

For further details refer to the AHS website at www.hydro.gov.au for new edition and new chart stock arrival information.

When placing orders with a chart agent, mariners should advise whether their order pertains to the current edition or the new edition.

438 AUSTRALIA - Amendment to Australian National Tide Tables 2014

Australian Hydrographic Service (AA737403, AA737755)

Page xxx

Amend Booby Island To Chart Datum AUS 294 NE 22 Feb 2013 0.0*Amend* Barrow I. (W.L.) To Chart Datum AUS 742 NE 24 Aug 2012 0.0

Page xxxi

Amend Bundaberg (Burnett Heads) To chart Datum AUS 242 NE 17 Jan 2014 0.0

Page xxxiv

Amend Lucinda (Offshore) To Chart Datum AUS 259 NE 10 Aug 2012 0.0

Page xxxvi

Amend Port Walcott (Cape Lambert) To Chart Datum AUS 740 NE 24 Aug 2012 0.0*Amend* Port Walcott (Cape Lambert) To Chart Datum AUS 741 NE 24 Aug 2012 0.0

Page 348

Amend Stephens I. (Port No 57935) To Chart Datum to 0.0

439* AUSTRALIA - NEW SOUTH WALES - Botany Bay - Restricted areas
NSW Roads and Maritime Services (AA729020)

Aus 196 [994/2013]

Insert	restricted area with magenta legend <i>Area 6 (see Note)</i> , between	33° 58'.092 S	151° 11'.128 E
		33° 58'.289 S	151° 11'.179 E
		33° 58'.303 S	151° 11'.100 E
		33° 58'.289 S	151° 11'.179 E
		33° 58'.547 S	151° 11'.246 E
	restricted area with magenta legend <i>Area 5 (see Note)</i> , between	33° 58'.573 S	151° 11'.100 E
		33° 58'.447 S	151° 11'.524 E
		33° 58'.459 S	151° 11'.454 E
		33° 58'.750 S	151° 11'.530 E
		33° 58'.671 S	151° 11'.969 E
	restricted area with magenta legend <i>Area 3 (see Note)</i> , between	33° 58'.380 S	151° 11'.893 E
		33° 58'.405 S	151° 11'.756 E
		33° 58'.750 S	151° 11'.530 E
		33° 59'.041 S	151° 11'.605 E
		33° 58'.962 S	151° 12'.044 E
	restricted area with magenta legend <i>Area 4 (see Note)</i> , between	33° 58'.671 S	151° 11'.969 E
Substitute	accompanying note for RA note	33° 57'.63 S	151° 14'.14 E
Amend	legend to <i>Area 1 (see Note)</i>	33° 58'.48 S	151° 12'.29 E
	legend to <i>Area 2 (see Note)</i>	33° 57'.72 S	151° 11'.26 E

Aus 198 [1191/2013]

Insert	restricted area with magenta legend <i>Area 6 (see Note)</i> , between	33° 58'.089 S	151° 10'.810 E
		33° 58'.110 S	151° 10'.676 E
		33° 58'.367 S	151° 10'.743 E
		33° 58'.289 S	151° 11'.179 E
		33° 58'.092 S	151° 11'.128 E
	restricted area with magenta legend <i>Area 5 (see Note)</i> , between	33° 58'.367 S	151° 10'.743 E
		33° 58'.625 S	151° 10'.811 E
		33° 58'.547 S	151° 11'.246 E
		33° 58'.289 S	151° 11'.179 E
		33° 58'.447 S	151° 11'.524 E
	restricted area with magenta legend <i>Area 3 (see Note)</i> , between	33° 58'.459 S	151° 11'.454 E
		33° 58'.750 S	151° 11'.530 E
		33° 58'.671 S	151° 11'.969 E
		33° 58'.380 S	151° 11'.893 E
		33° 58'.405 S	151° 11'.756 E
	restricted area with magenta legend <i>Area 4 (see Note)</i> , between	33° 58'.750 S	151° 11'.530 E
		33° 59'.041 S	151° 11'.605 E
		33° 58'.962 S	151° 12'.044 E
		33° 58'.671 S	151° 11'.969 E
		33° 57'.50 S	151° 03'.00 E
	accompanying note		
Amend	legend to <i>Area 1 (see Note)</i>	33° 58'.46 S	151° 12'.19 E
	legend to <i>Area 2 (see Note)</i>	33° 57'.48 S	151° 11'.10 E
Delete	note	33° 57'.7 S	151° 04'.0 E

Aus 199 [741/2013]

Insert	restricted area with magenta legend <i>Area 6 (see Note)</i> , between	33° 58'.089 S	151° 10'.810 E
		33° 58'.110 S	151° 10'.676 E
		33° 58'.367 S	151° 10'.743 E
		33° 58'.289 S	151° 11'.179 E
		33° 58'.092 S	151° 11'.128 E
	restricted area with magenta legend <i>Area 5 (see Note)</i> , between	33° 58'.367 S	151° 10'.743 E
		33° 58'.625 S	151° 10'.811 E
		33° 58'.547 S	151° 11'.246 E
		33° 58'.289 S	151° 11'.179 E
		33° 58'.447 S	151° 11'.524 E
	restricted area with magenta legend <i>Area 3 (see Note)</i> , between	33° 58'.459 S	151° 11'.454 E
		33° 58'.750 S	151° 11'.530 E
		33° 58'.671 S	151° 11'.969 E
		33° 58'.380 S	151° 11'.893 E
		33° 58'.405 S	151° 11'.756 E
	restricted area with magenta legend <i>Area 4 (see Note)</i> , between	33° 58'.750 S	151° 11'.530 E

439*		AUSTRALIA - NEW SOUTH WALES - Botany Bay - Restricted areas	
		33° 59'.041 S	151° 11'.605 E
		33° 58'.962 S	151° 12'.044 E
		33° 58'.671 S	151° 11'.969 E
Substitute	accompanying note for RA note	33° 57'.75 S	151° 14'.20 E
Amend	legend to <i>Area 1 (see Note)</i>	33° 58'.34 S	151° 12'.56 E
	legend to <i>Area 2 (see Note)</i>	33° 57'.98 S	151° 11'.30 E
440*		AUSTRALIA - QUEENSLAND - Shoalwater Bay - Depths	
HMAS <i>Paluma</i> (DHDB 1486847)			
Aus 260 [861/2009]			
Insert	accompanying block	22° 14'.0 S	150° 18'.0 E
Aus 822 [1079/2013]			
Insert	accompanying block	22° 14'.0 S	150° 18'.0 E
AX 00260S [NE 9/2/2012]			
Insert	accompanying block	22° 14'.0 S	150° 18'.0 E
AX 00260T [NE 10/8/2012]			
Insert	accompanying block	22° 14'.0 S	150° 18'.0 E
AX 00822S [1079/2013]			
Insert	accompanying block	22° 14'.0 S	150° 18'.0 E
441*		AUSTRALIA - NORTHERN TERRITORY - Darwin - Emery Point - Light buoy moved	
Darwin Port Corporation Notice 49/2014 (AA731404)			
Aus 24 [250/2014]			
Move	light buoy	12° 27'.1 S	130° 48'.8 E
	to	12° 27'.104 S	130° 48'.844 E

442* AUSTRALIA - WESTERN AUSTRALIA - Esperance - Nav aids
 Esperance Ports Sea and Land (AA733065)

Aus 119 [450/2013]

Insert	light, <i>F.Bu.17m 5M</i>	33° 52'.24 S	121° 53'.64 E
	light, <i>F.Bu.13m 5M</i>	33° 52'.21 S	121° 53'.73 E
	a dashed line in a direction 064° for a distance of 700m, thence a continuous line for 2300m, with legend 244°, emanating from light	33° 52'.24 S	121° 53'.64 E

Substitute	light beacon, <i>Fl.WR.3s</i> , for light	33° 51'.3 S	121° 54'.6 E
------------	---	-------------	--------------

Delete	light	33° 52'.3 S	121° 53'.6 E
	light	33° 52'.2 S	121° 53'.8 E
	navline with legend 242.4°, between	33° 52'.3 S	121° 53'.6 E
		33° 51'.5 S	121° 55'.4 E

Aus 119 (plan, Esperance) [450/2013]

Insert	light beacon, <i>Fl.WR.3s 8m 7M</i> , with sectors White 300.0° - 315.0° (15°) Red 315.0° - 300.0° (345°)	33° 51'.315 S	121° 54'.571 E
	light, <i>F.Bu.17m 5M</i>	33° 52'.244 S	121° 53'.637 E
	light, <i>F.Bu.13m 5M</i>	33° 52'.208 S	121° 53'.726 E
	a dashed line in a direction 064° for a distance of 700m, thence a continuous line for 2300m, with legend 244°, emanating from light	33° 52'.244 S	121° 53'.636 E

Move	light beacon	33° 52'.00 S	121° 53'.87 E
	to	33° 52'.007 S	121° 53'.891 E

Delete	light with sectors	33° 51'.3 S	121° 54'.6 E
	light	33° 52'.28 S	121° 53'.64 E
	light	33° 52'.22 S	121° 53'.76 E
	navline with legend 242.4°, between	33° 52'.28 S	121° 53'.64 E
		33° 51'.50 S	121° 55'.42 E

443* AUSTRALIA - TASMANIA - Hawkers point - Pipeline

Former Notice - 277(T)/2013 is cancelled
 Marine and Safety Tasmania (AA731117)

Aus 173 [409/2014]

Insert	accompanying block	43° 20'.0 S	147° 05'.0 E
--------	--------------------	-------------	--------------

Aus 795 [962/2013]

Insert	accompanying block	43° 20'.0 S	147° 05'.0 E
--------	--------------------	-------------	--------------

444* AUSTRALIA - TASMANIA - River Derwent - Light buoys

Tasmanian Ports Corporation (AA735570), Marine and Safety Tasmania Notice 56/14 (AA736056)

Aus 172 [590/2013]

Insert	port lateral topmark	42° 49'.980 S	147° 19'.464 E
--------	----------------------	---------------	----------------

Substitute	starboard lateral conical light buoy, <i>Fl.G.5s</i> , with topmark for light buoy	42° 49'.63 S	147° 19'.20 E
------------	--	--------------	---------------

Aus 172 (plan, Bowen Bridge) [590/2013]

Substitute	starboard lateral conical light buoy, <i>Fl.G.5s</i> , with topmark for light buoy	42° 49'.63 S	147° 19'.20 E
------------	--	--------------	---------------

445(T)/2014 AUSTRALIA - NEW SOUTH WALES - Port Jackson - Farm Cove - Harbour works completed*Former Notice* - 218(T)/2014 is cancelled

Sydney Ports Corporation Notice 6/2014 (AA723561)

Cancel this notice on receipt.

Chart formerly affected - Aus 200 - Aus 202**446(T)/2014 AUSTRALIA - QUEENSLAND - Brisbane River - Dredging operations completed***Former Notice* - 338(T)/2014 is cancelled

Maritime Safety Queensland Notice 167(T)/2014 (AA730156)

Cancel this notice on receipt.

Chart formerly affected - Aus 236 - Aus 237 - Aus 238**447(T)/2014 AUSTRALIA - QUEENSLAND - Decapolis Reef - Light beacon; light buoy***Former Notice* - 413(T)/2014 is cancelled*Date* - Until 30 June 2015

Australian Maritime Safety Authority Final ATH 10/2014 (AA740294)

The light beacon, *Fl.2-5s 6m 10M* (14° 51'.10 S 145° 16'.41 E), has been destroyed.A temporary starboard lateral pillar light buoy, *Fl.G.2-5s*, exists in position 14° 50'.97 S 145° 16'.54 E.**Chart temporarily affected - Aus 832****448(T)/2014 AUSTRALIA - QUEENSLAND - Gladstone - Harbour works***Date* - Until 20 May 2014

Maritime Safety Queensland Notice 238(T)/2014 (AA736562)

Harbour works are in progress at beacons S1 (23° 53'.89 S 151° 30'.40 E) and Q2 (23° 50'.47 S 151° 18'.75 E).

The barge *Jack Up 1* and support vessels *Sledgehammer*, *AMS Nova*, *AMS Orion* and *Burnu* will be on site to conduct works. The barge will display appropriate lights and shapes and will monitor VHF Ch 12.

Mariners are advised to navigate with caution in the area.

Chart temporarily affected - Aus 245 - Aus 246 - Aus 819**449(T)/2014 AUSTRALIA - QUEENSLAND - Mooloolaba - Shoaling***Former Notice* - 417(T)/2014 is cancelled

Maritime Safety Queensland Notice 233(T)/2014 (AA736045)

Shoaling with a least depth of 2.4m exists within the main channel to Mooloolah River.

A least depth of 2.2m exists adjacent to the end of the eastern breakwater, in the vicinity of position 26° 40'.76 S 153° 07'.94 E.

Mariners are advised to navigate with caution in the area.

Chart temporarily affected - Aus 235**450(T)/2014 AUSTRALIA - QUEENSLAND - Moreton Bay - East Channel - Scientific instruments***Date* - Until 30 January 2015

Maritime Safety Queensland Notice 241(T)/2014 (AA737310)

Special light buoys, Q.Y, exist in the following positions:

27° 09'.85 S 153° 21'.83 E

27° 13'.18 S 153° 20'.84 E

27° 11'.98 S 153° 19'.70 E.

Chart temporarily affected - Aus 236

451(T)/2014 AUSTRALIA - QUEENSLAND - Moreton Bay - Brisbane River - Depth information

Former Notice - 418(T)/2014 is cancelled

Brisbane Port Corporation (AA739471)

Available depths and under keel clearances (UKC) at 6 May 2014:

<i>Berth</i>	<i>Metres</i>	<i>Remarks</i>
* Fisherman Islands No12	13.8	
Fisherman Islands No11	14.0	
Fisherman Islands No10	14.1	
Fisherman Islands No9	14.0	
Fisherman Islands No8	13.9	
Fisherman Islands No7	13.8	
* Fisherman Islands No6	13.9	
* Fisherman Islands No5	13.7	
* Fisherman Islands No4	13.7	
* Fisherman Islands No3	13.6	
Fisherman Islands No2	14.1	
* Fisherman Islands No1	14.0	
* Fisherman Islands Grain and Woodchip	13.1	
* Caltex Fisherman Islands	14.5	
* Fisherman Islands Coal	13.8	
* Fisherman Islands General Purpose	11.2	
BP Luggage Point	13.8	
* Caltex Products	9.9	
* Cement Australia Co Wharf	9.6	
* BP Products	9.7	
Shell	10.7	
* Graincorp Liquid Terminal	10.4	
Incitec North	9.7	
* Incitec South	9.4	
* Pinkenba 1	10.0	
* Pinkenba 2	10.0	
Riverside Marina	-	
Sugar Terminal	9.7	
Cairncross Fitting Out Wharf	7.1	
Cairncross Breasting Wharf	4.7	
Brisbane Naval Wharf	4.3	
* Maritime No1	9.0	
* Hamilton No4	10.3	
Hamilton No1	8.5	
Brisbane Cruise Ship Terminal	8.5	
	<i>Metres</i>	<i>UKC/Remarks</i>
<i>Moreton Bay:</i>		
North West Channel	15.0	2.3 (280m width)
North West Bypass Channel	9.2	1.6
Spitfire Channel	15.0	1.5 (600m width)
East Knoll Bypass Channel	6.0	1.4
East Channel	15.0	1.5 (300m width from western side)
Main Channel (M8 - M9)	10.0	1.8
Entrance Channel (E5 - EBCN)	14.7	1.5
<i>Brisbane River:</i>		
Outer Bar Cutting	13.7	1.46
* Inner Bar Cutting	13.7	1.46
* Fisherman Islands Swing Basin	13.7	1.3
River	9.1	0.6 / 0.9 (draft/tide)
Cement Australia Swing Basin	9.1	0.6 / 0.9 (draft/tide)
* Pinkenba Swing Basin	8.9	0.6 / 0.9 (draft/tide)
* Hamilton Swing Basin	8.5	0.6 / 0.9 (draft/tide)
* Indicates new or revised entry.		

Chart temporarily affected - Aus 235 - Aus 236 - Aus 237 - Aus 238 - Aus 814 - Aus 815

452(T)/2014 AUSTRALIA - QUEENSLAND - Rattlesnake Island - Live firing completed*Former Notice* - 421(T)/2014 is cancelled

Maritime Safety Queensland Notice 230(T)/2014 (AA735866)

Cancel this notice on receipt.

Chart formerly affected - Aus 256 - Aus 827**453(T)/2014 AUSTRALIA - QUEENSLAND - Shoalwater Bay - Live firing completed***Former Notice* - 422(T)/2014 is cancelled

Maritime Safety Queensland Notice 220(T)/2014 (AA735176)

Cancel this notice on receipt.

Chart formerly affected - Aus 248 - Aus 367 - Aus 490 - Aus 820 - AX 00367S - AX 00820S**454(T)/2014 PAPUA NEW GUINEA - Seeadler Harbour - Light relit***Former Notice* - 350(T)/2014 is cancelled

National Maritime Safety Authority PNG Notice 13/2014 (AA738952)

Cancel this notice on receipt.

Chart formerly affected - Aus 391 - Aus 662 - Aus 4603 (INT 603) - Aus 4604 (INT 604) - Aus 4622 (INT 622) - AX 04603U - AX 04604U**455(T)/2014 AUSTRALIA - NORTHERN TERRITORY - Darwin - Middle Pass - Light buoy repositioned**

Darwin Port Corporation Notice 63/2014 (AA737300)

LNG2 port lateral light buoy, /*iso.R.2s* (12° 21'.02 S 130° 43'.54 E), has been repositioned to 12° 21'.03 S 130° 43'.61 E.**Chart temporarily affected - Aus 26 - AX 00026T****456(T)/2014 AUSTRALIA - NORTHERN TERRITORY - Darwin - Middle Pass - Shoaling***Former Notice* - 424(T)/2014 is cancelled

Darwin Port Corporation Notice 64/2014 (AA739632)

Shoaling, least depth 4.3*m*, exists within an area bounded by the following positions:

12° 21'.30 S 130° 43'.25 E

12° 22'.15 S 130° 43'.77 E

12° 22'.08 S 130° 43'.91 E

12° 21'.25 S 130° 43'.41 E

Shoaling, least depth 6.3*m*, exists within an area bounded by the following positions:

12° 21'.00 S 130° 43'.67 E

12° 21'.00 S 130° 43'.75 E

12° 21'.08 S 130° 43'.75 E

12° 21'.08 S 130° 43'.67 E.

Chart temporarily affected - Aus 26 - Aus 309 - Aus 722 - AX 00026T - AX 00309T - AX 00309U - AX 00722T**457(T)/2014 AUSTRALIA - NORTHERN TERRITORY - Darwin - East Arm - Light buoy restored***Former Notice* - 353(T)/2014 is cancelled

Darwin Port Corporation Notice 68(T)/2014 (AA740296)

Cancel this notice on receipt.

Chart formerly affected - Aus 24 - Aus 26 - Aus 28 - AX 00026T

458(T)/2014 AUSTRALIA - WESTERN AUSTRALIA - Ashburton Road - Pipeline*Date* - Until 30 August 2014

Inchcape Shipping Services (AA737816)

Barge *Tog Mor* and support vessels *Mermaid Vantage*, *Fiona F*, *Lewik Avior* and *Caroline Tide* are conducting pipe laying operations between the following positions:

21° 28'.08 S 114° 51'.09 E

21° 35'.15 S 114° 57'.38 E

21° 38'.31 S 114° 59'.25 E

21° 40'.66 S 114° 59'.57 E.

Mariners are advised to navigate with caution in the area.

Chart temporarily affected - Aus 64 - Aus 328 - Aus 743 - Aus 744**459(T)/2014 AUSTRALIA - WESTERN AUSTRALIA - Dampier Archipelago - Seismic survey northwestwards***Date* - Until 30 June 2014

Apache Energy Ltd (AA737810)

SSV *Geo Caspian*, with a 8000m towed array, and support vessels *Pacific Parrot* and *Browse Invincible* are conducting a survey in the area bounded by the following positions:

19° 51'.38 S 116° 10'.67 E

19° 51'.34 S 116° 22'.62 E

19° 58'.60 S 116° 31'.76 E

20° 22'.61 S 116° 27'.02 E

20° 22'.64 S 116° 07'.27 E

20° 12'.20 S 116° 07'.29 E.

Chart temporarily affected - Aus 57 - Aus 327 - Aus 741 - Aus 742 - Aus 4722 (INT 722) - Aus 4723 (INT 723) - AX 04722U - AX 04723U**460(T)/2014 AUSTRALIA - WESTERN AUSTRALIA - Double Island - light restored***Former Notice* - 83(T)/2014 is cancelled

Port of Barrow Notice 03/2014 (AA737790)

Cancel this notice on receipt.

Chart formerly affected - Aus 62 - Aus 67 - Aus 327 - Aus 328 - Aus 742**461(T)/2014 AUSTRALIA - WESTERN AUSTRALIA - Imperieuse Reef - Seismic survey completed***Former Notice* - 290(T)/2014 is cancelled

Apache Energy Ltd (AA737810)

Cancel this notice on receipt.

Chart formerly affected - Aus 326 - Aus 4722 (INT 722) - Aus 4723 (INT 723) - AX 04722U - AX 04723U**462(T)/2014 AUSTRALIA - WESTERN AUSTRALIA - Montebello Islands - Light buoys recovered***Former Notice* - 85(T)/2014 is cancelled

Viking Seatech (AA714772)

Cancel this notice on receipt.

Chart formerly affected - Aus 327 - Aus 328**463(T)/2014 AUSTRALIA - WESTERN AUSTRALIA - Muiron Islands - Scientific instruments recovered***Former Notice* - 356(T)/2014 is cancelled

MetOcean Engineers (AA739307)

Cancel this notice on receipt.

Chart formerly affected - Aus 328 - Aus 329 - Aus 334 - Aus 744 - AX 00334S

464(T)/2014 AUSTRALIA - WESTERN AUSTRALIA - North West Cape - Scientific instrument recovered northwards
Former Notice - 835(T)/2013 is cancelled
 MetOcean Engineers (AA739307)

Cancel this notice on receipt.

Chart formerly affected - Aus 328 - Aus 329 - Aus 744

465(T)/2014 AUSTRALIA - WESTERN AUSTRALIA - Port Hedland - South West Creek - Dredging operations completed

Former Notice - 193(T)/2014 is cancelled
 Port Hedland Port Authority Notice 62/2014 (AA740384)

Cancel this notice on receipt.

Chart formerly affected - Aus 52 - Aus 54

466(T)/2014 AUSTRALIA - SOUTH AUSTRALIA - Port Adelaide - Dredging operations

Date - Until 13 June 2014

Department of Planning, Transport and Infrastructure SA Notice 16/2014 (AA737299)

Dredging operations are in progress in the vicinity of position 34° 46'.48 S 138° 29'.04 E.

A dredge and support vessels are on site and will display appropriate lights and shapes.

A floating pipeline exists between berth No4 (34° 46'.48 S 138° 29'.04 E) and berth No8 (34° 45'.99 S 138° 29'.60 E).

Mariners are advised to navigate with caution in the area.

Chart temporarily affected - Aus 137

467(T)/2014 AUSTRALIA - SOUTH AUSTRALIA - Port Macdonnell - Harbour works

Date - Until 31 December 2014

Department of Planning, Transport and Infrastructure SA Notice 21/2014 (AA737290)

Harbour works associated with the upgrade of the existing boat ramp and wharf in position 38° 03'.46 S 140° 41'.74 E are in progress.

Temporary rock groynes marked by lights, *Fl.Y.2s*, exist in the vicinity of the boat ramp.

Mariners are advised to navigate with caution in the area.

Chart temporarily affected - Aus 348

468(T)/2014 AUSTRALIA - SOUTH AUSTRALIA - Spencer Gulf - Thistle Island - Defence trials

Date - Until 22 May 2014

Department of Planning, Transport and Infrastructure SA Notice 13/2014 (AA734532, AA731679), Department of Defence (AA739627)

Defence trials will be conducted within a 2M radius of position 35° 00'.10 S 136° 15'.14 E during the period 18 May to 21 May 2014.

Mariners are advised to navigate with caution in the area.

Chart temporarily affected - Aus 343 - Aus 776 - AX 00343S - AX 00776S

469(T)/2014 AUSTRALIA - SOUTH AUSTRALIA - Wallaroo - Light beacon restored

Former Notice - 1179(T)/2013 is cancelled

Department for Transport, Energy and Infrastructure SA Notice 15/2014 (AA737298)

Cancel this notice on receipt.

Chart formerly affected - Aus 133

470(T)/2014 AUSTRALIA - VICTORIA - Geelong - Drilling operations completed

Former Notice - 94(T)/2014 is cancelled

Victorian Regional Channels Authority (AA738941), Victorian Notice 89/2014 (AA739503)

Cancel this notice on receipt.

Chart formerly affected - Aus 153 - Aus 157**471(P)/2014 AUSTRALIA - VICTORIA - Port Phillip - Anchorages**

Victorian Notice 19/2014 (AA717682)

Anchorages have been repositioned as follows:

<i>Anchorage desig</i>	<i>Position</i>
S1	37° 58'.21 S 144° 54'.30 E
S2	37° 57'.56 S 144° 53'.25 E
S3	37° 56'.90 S 144° 52'.20 E
S4	37° 56'.24 S 144° 51'.17 E
S5	37° 57'.17 S 144° 50'.32 E
S6	37° 57'.80 S 144° 51'.39 E
S7	37° 58'.42 S 144° 52'.45 E
S8	37° 58'.81 S 144° 50'.88 E
S9	37° 58'.10 S 144° 49'.67 E
S10	37° 59'.03 S 144° 49'.01 E
S11	37° 59'.74 S 144° 50'.23 E
S12	38° 00'.67 S 144° 49'.58 E
S13	37° 59'.96 S 144° 48'.36 E.

Anchorages with a 926m radius swinging circle exist as follows:

<i>Anchorage desig</i>	<i>Position</i>
G1	38° 01'.60 S 144° 48'.93 E
G2	38° 01'.82 S 144° 47'.06 E
G3	38° 02'.53 S 144° 48'.27 E
G4	38° 02'.74 S 144° 46'.40 E.

ENC cells AU438144 and AU439144 have been updated. These amendments will be incorporated in new edition Aus 155 to be published shortly. A block update for Aus 143 and Aus 157 will be published in due course.

Chart which will be affected - Aus 143 - Aus 155 - Aus 157**472(T)/2014 AUSTRALIA - VICTORIA - Port Phillip - South Channel - Dredging operations**

Date - Until 30 June 2014

Victorian Notice 82(T)/2014 (AA736027)

The dredge *Brisbane* and support vessel *Lydia* are conducting dredging operations in the South Channel.

Dredge spoil will be deposited in the spoil ground at 38° 20'.2 S 144° 51'.9 E

Vessels will monitor VHF Ch 12.

Mariners are advised to navigate with caution in the area.

Chart temporarily affected - Aus 143 - Aus 144 - Aus 158**473(T)/2014 AUSTRALIA - VICTORIA - Port Phillip - Port Melbourne - Webb Dock - Silt curtains**

Date - Until 31 December 2014

Victorian Notice 84(T)/2014 (AA739510)

Two silt curtains, marked by lit flashing and unlit yellow buoys, exist between:

- 1- 37° 50'.44 S 144° 54'.23 E and 37° 50'.65 S 144° 54'.28 E
- 2- 37° 50'.35 S 144° 54'.30 E, 37° 50'.37 S 144° 54'.29 E and 37° 50'.38 S 144° 54'.25 E.

Chart temporarily affected - Aus 154

474(T)/2014 AUSTRALIA - VICTORIA - Western Port - Stony Point - Harbour works*Date* - Until 30 May 2014

Victorian Notice 85(T)/2014 (AA737293)

Harbour works are in progress in the vicinity of position 38° 22'.47 S 145° 13'.37 E.

Mariners are advised to navigate with caution in the area.

Chart temporarily affected - Aus 152**475(T)/2014 AUSTRALIA - TASMANIA - Port Sorell - Lights unreliable***Date* - Until 6 June 2014

Marine and Safety Tasmania Notice M62/2014 (AA739588)

The lights, *Q.Bu* & *Iso.Bu.2s* (41° 09'.81 S 146° 33.47 E), are unreliable.

Chart temporarily affected - Aus 799

HYDROGRAPHIC REPORTS

Nil Reports

NAVIGATION WARNINGS

The following radio messages have been received during the period to 8 May 2014. Signal copies of these messages may be destroyed. It is recommended that the reprint of Navigational Warnings should be kept in a file or a book divided into areas. Cancellation should be made on receipt of signals and reprints.

Rigs on location other than those listed in the latest Section III summary are the subject of Radio Navigational Warnings. Rigs in transit will not be the subject of Warnings.

AUSCOAST WARNING

- 102 Two buoys with flashing white light established in position 13° 41'.61 S 122° 47'.10 E.
- 103 Drill rig Deepwater Millennium in position 21° 25'.82 S 113° 25'.60 E. 3M clearance requested.
- 104 Cancelled.
- 105 Special purpose vessel *Geo Caspian* conducting seismic survey towing 3000m array in an area bounded by 21° 22'.0 S to 21° 35'.0 S and 114° 10'.0 E to 114° 45'.0 E. 4M clearance requested.
- 106 Decapolis Reef starboard lateral light buoy, Fl.G.2-5s, established in position 14° 50'.97 S 145° 16'.54 E.
- 107 Cancelled.
- 108 Caldbeck Reef light K3282 in position 10° 06'.30 S 143° 09'.99 E unlit.
- 109 Cancelled.
- 110 8 lit mooring buoys established within 1M of 20° 27'.62 S 114° 50'.51 E.
- 111 Cancelled.
- 112 Cancelled.

NAVAREA X WARNINGS

- 025 Cancelled.
- 026 Cancelled.
- 027 Cancelled.
- 028 Uncharted wreck in position 15° 32'.51 S 167° 09'.44 E.

Navigational warnings in force as at 080001UTC MAY 14.**Auscoast**

2014 020 043 046 050 053 054 057 058 062 063 064 065 072 074 076 078 079 082 084 086 089 095 098 099 102 103 105
106 108 110

Navarea X

2014 016 022 028

Summary of mobile drilling rigs as at 080001UTC MAY 14.

<i>Name</i>	<i>Position</i>
Nan Hai 6	9° 50'.20 S 130° 20'.40 E
Noble Clyde Boudreaux	13° 49'.00 S 123° 19'.35 E
Stena Clyde	14° 12'.50 S 123° 06'.50 E
Jack Bates	13° 41'.54 S 122° 48'.21 E
Transocean Legend	13° 34'.42 S 122° 20'.41 E
Atwood Osprey	19° 54'.35 S 115° 16'.12 E
Atwood Eagle	20° 01'.82 S 115° 12'.11 E
Deepwater Frontier	19° 50'.12 S 114° 34'.10 E
Ocean America	20° 19'.40 S 114° 27'.80 E
Atwood Falcon	21° 20'.97 S 114° 04'.40 E
Deepwater Millennium	21° 25'.82 S 113° 25'.60 E

NAVAREA XIV WARNINGS

Nil.

Navarea XIV warnings in force as at 080001UTC MAY 14.

2014 Nil.

To accompany Australian Notice to Mariners 439/2014

RESTRICTED AREAS

The following restrictions apply within the vicinity of Port Botany, (33° 58'.1 S, 151° 12'.5 E) and Sydney International Airport, (33° 58'.3 S, 151° 11'.1 E):

Areas 1 & 2: Unauthorised vessels and boats not permitted.

Areas 3 & 6: Entry prohibited to vessels with an air draft of more than 12.2m.

Areas 4 & 5: Entry prohibited to vessels with an air draft of more than 18.3m.

Note for chart Aus 196

To accompany Australian Notice to Mariners 439/2014

RESTRICTED AREAS

The following restrictions apply within the vicinity of Port Botany, (33° 58'.1 S, 151° 12'.5 E) and Sydney International Airport, (33° 58'.3 S, 151° 11'.1 E):

Areas 1 & 2: Unauthorised vessels and boats not permitted.

Areas 3 & 6: Entry prohibited to vessels with an air draft of more than 12.2m.

Areas 4 & 5: Entry prohibited to vessels with an air draft of more than 18.3m.

Note for chart Aus 198

To accompany Australian Notice to Mariners 439/2014

RESTRICTED AREAS

The following restrictions apply within the vicinity of Port Botany, (33° 58'.1 S, 151° 12'.5 E) and Sydney International Airport, (33° 58'.3 S, 151° 11'.1 E):

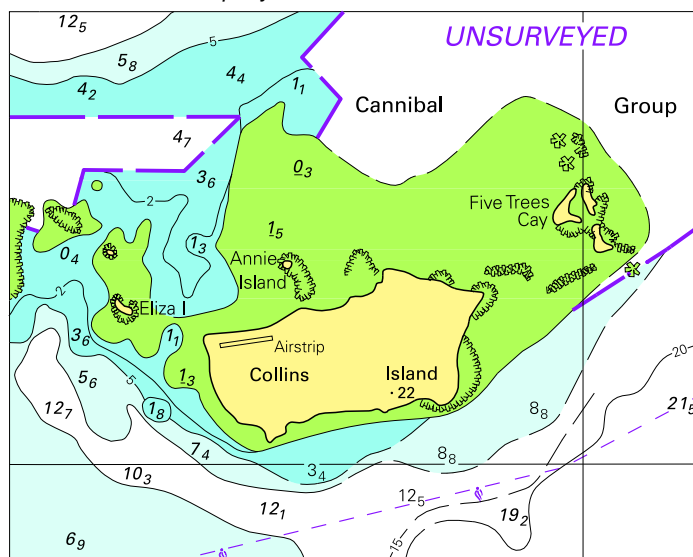
Areas 1 & 2: Unauthorised vessels and boats not permitted.

Areas 3 & 6: Entry prohibited to vessels with an air draft of more than 12.2m.

Areas 4 & 5: Entry prohibited to vessels with an air draft of more than 18.3m.

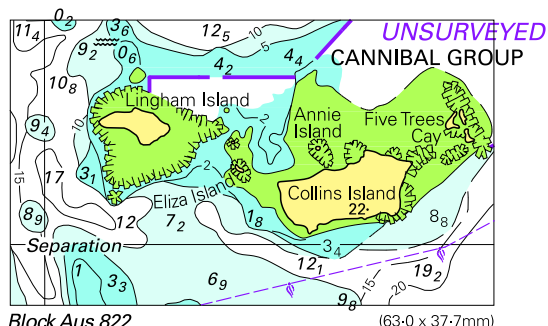
Note for chart Aus 199

To accompany Australian Notice to Mariners 440/2014



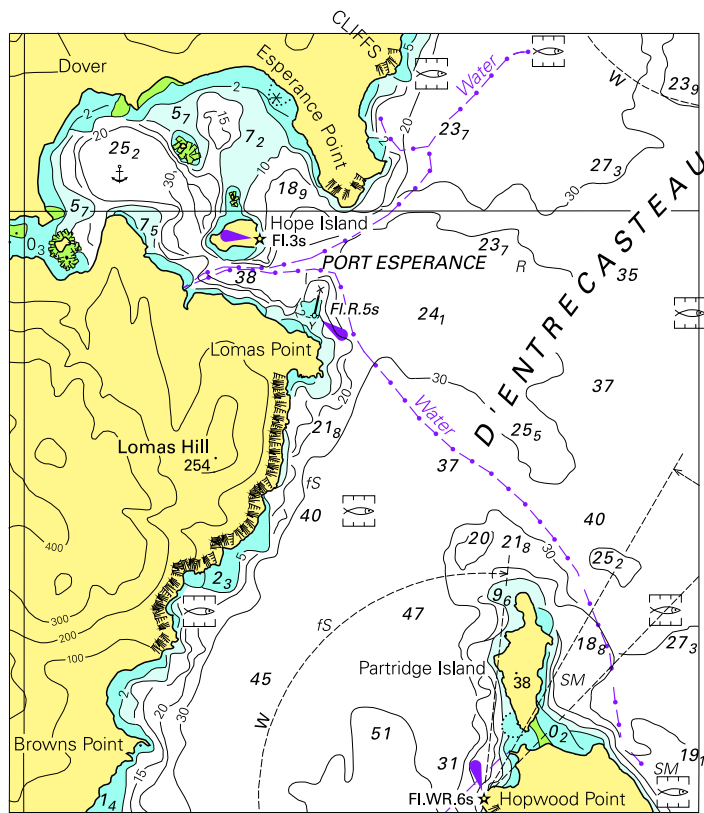
Block for Aus 260 © Commonwealth of Australia 2014 (91.7 X 72.7mm)

To accompany Australian Notice to Mariners 440/2014



(120.3 x 168.2mm)

To accompany Australian Notice to Mariners 443/2014



© Commonwealth of Australia 2014

Block for chart Aus 795

(91.2 x 103.0)