



14 February 2014

Edition 3

Australian Notices to Mariners are the authority for correcting Australian Charts and Publications

AUSTRALIAN NOTICES TO MARINERS

Notices 151 - 201



Published fortnightly by the Australian Hydrographic Service

Commodore B.K. BRACE RAN
Hydrographer of Australia

SECTIONS.

- I. Australian Notices to Mariners, including blocks and notes.
- II. Hydrographic Reports.
- III. Navigational Warnings.

SUPPLEMENTS.

- I. Tracings
- II. Cumulative List of Australian Notices to Mariners.
- III. Cumulative List of Temporary and Preliminary Australian Notices to Mariners.
- IV. Temporary and Preliminary Notices in force.
- V. Amendments to Admiralty List of Lights and Fog Signals (Vol K), Radio Signals (NP 281(2), 282, 283(2), 285, 286(4)) and Sailing Directions (NP 9, 13, 14, 15, 33, 34, 35, 36, 39, 44, 51, 60, 61, 62, 100, 136).

© Commonwealth of Australia 2014

This work is copyright. Apart from any use permitted under the Copyright Act 1968, no part may be reproduced by any process, adapted, communicated or commercially exploited without prior written permission from The Commonwealth represented by the Australian Hydrographic Service.

IMPORTANT NOTICE

This edition of Notices to Mariners includes all significant information affecting AHS products which the AHS has become aware of since the last edition. All reasonable efforts have been made to ensure the accuracy and completeness of the information, including third party information, on which these updates are based. The AHS regards third parties from which it receives information as reliable, however the AHS cannot verify all such information and errors may therefore exist. The AHS does not accept liability for errors in third party information.

GENERAL INSTRUCTIONS

The substance of these notices should be inserted on the charts affected.

Bearings are referred to the true compass and are reckoned clockwise from North; those relating to lights are given as seen by an observer from seaward. Positions quoted in permanent notices relate to the horizontal datum for the chart(s). When preliminary or temporary notices affect multiple charts, positions will be provided in relation to only one horizontal datum and that datum will be specified. When the multiple charts do not have a common horizontal datum, mariners will be required to adjust the position(s) for those charts not on the specified datum. The range quoted for a light is its nominal range. Depths are with reference to the chart datum of each chart. Heights are above mean high water springs or mean higher high water, as appropriate.

The capital letter (P) or (T) after the number of any notice denotes a preliminary or temporary notice respectively, which are contained separately at the end of the permanent notices. A star (*) adjacent to the number of a notice indicates that the notice is based on original information.

REPORTING OF DANGERS

Mariners are particularly requested to notify the AUSTRALIAN HYDROGRAPHIC SERVICE, Locked Bag 8801 Wollongong, NSW 2500 (Fax 02-4223 6599, e-mail Hydro.NTM@defence.gov.au or, alternatively by filling in and submitting the [Hydrographic Notes](#) forms located on the web site – www.hydro.gov.au), immediately on the discovery of new dangers or suspected dangers to navigation. For changes or defects in aids to navigation notify AusSAR (Fax 02-6230 6868 or email rccaus@amsa.gov.au).

AUTHORISED USE

Copies of Australian notices are available free of charge from the Australian Hydrographic Service (AHS) website (www.hydro.gov.au) and through the eNotices (email) service (www.hydro.gov.au/enotices/enotices.htm).

Individual Notices may be copied for the purpose of inserting Notice substance on official charts and publications. Paper copies may be printed by chart agents and distributed to customers on a cost recovery basis. Participating chart agents are listed on the AHS website as providing a 'Paper Notices to Mariners' service (www.hydro.gov.au/prodserv/distributors/distributors.htm). Copies of the notices may not be sold for profit without prior written agreement.

NUMERICAL INDEX OF NOTICES TO MARINERS

Edition No 3

Notices	Aus Chart, INT Chart, ENC Cell, AHP, BA Pubs
151	Product
152	Aus 238
153	Aus 235, 815
154	Aus 240
155	Aus 646
156	Aus 376
157	Aus 57, 58, 59, 60, 327, 741
158	Aus 81, 332, 333, 751
159	Aus 920
160	Aus 134, 776, AX 00776S
161	Aus 182
162	Aus 143, 155
163	Aus 169, 171
164	Aus 170
165	Aus 179, 800
166(T)	Aus 222
167(T)	Aus 252, 253, 268
168(T)	Aus 238
169(T)	Aus 252, 253, 254
170(T)	Aus 235, 236
171(T)	Aus 6
172(T)	Aus 235, 236, 237, 238, 814, 815
173(T)	Aus 270
174(T)	Aus 260, 367, 822, AX 00260S, 00260T, 00367S, 00822S
175(T)	Aus 260, 367, 822, AX 00260S, 00260T, 00367S, 00822S
176(T)	Aus 256, 257
177(T)	Aus 252, 253
178(T)	Aus 24
179(T)	Aus 312, 4721, INT 721, AX 00312U, 04721U
180(T)	Aus 328, 742, 743, 4723, 4725, INT 723, 725, AX 04723U
181(T)	Aus 327, 328, 742
182(T)	Aus 328, 742
183(T)	Aus 327, 328
184(T)	Aus 327, 328, 742
185(T)	Aus 327
186(T)	Aus 115
187(T)	Aus 327, 328
188(T)	Aus 328, 329, 4723, 4725, INT 723, 725, AX 04723U
189(T)	Aus 754, AX 00754S, AXA 0754S
190(T)	Aus 328, 329, 4723, 4725, INT 723, 725, AX 04723U
191(T)	Aus 328, 329, 744, 4723, 4725, INT 723, 725, AX 04723U
192(T)	Aus 328, 329, 744
193(T)	Aus 52, 54
194(T)	Aus 121
195(T)	Aus 111, 117, 334, 754, 755, AX 00117T, 00334S, 00754S, 00755S, AXA 0754S
196(T)	Aus 154
197(T)	Aus 143
198(T)	Aus 173
199(T)	Aus 179, 800
200(T)	Aus 179, 798, 800
201(T)	Aus 179, 800

NUMERICAL INDEX OF CHARTS AFFECTED

Edition No 3

Aus Chart	Notices
Aus 6	171(T)
Aus 24	178(T)
Aus 52	193(T)
Aus 54	193(T)
Aus 57	157
Aus 58	157
Aus 59	157
Aus 60	157
Aus 81	158
Aus 111	195(T)
Aus 115	186(T)
Aus 117	195(T)
Aus 121	194(T)
Aus 134	160
Aus 143	162, 197(T)
Aus 154	196(T)
Aus 155	162
Aus 169	163
Aus 170	164
Aus 171	163
Aus 173	198(T)
Aus 179	165, 199(T), 200(T), 201(T)
Aus 182	161
Aus 222	166(T)
Aus 235	153, 170(T), 172(T)
Aus 236	170(T), 172(T)
Aus 237	172(T)
Aus 238	152, 168(T), 172(T)
Aus 240	154
Aus 252	167(T), 169(T), 177(T)
Aus 253	167(T), 169(T), 177(T)
Aus 254	169(T)
Aus 256	176(T)
Aus 257	176(T)
Aus 260	174(T), 175(T)
Aus 268	167(T)
Aus 270	173(T)
Aus 312	179(T)
Aus 327	157, 181(T), 183(T), 184(T), 185(T), 187(T)
Aus 328	180(T), 181(T), 182(T), 183(T), 184(T), 187(T), 188(T), 190(T), 191(T), 192(T)
Aus 329	188(T), 190(T), 191(T), 192(T)
Aus 332	158
Aus 333	158
Aus 334	195(T)
Aus 367	174(T), 175(T)
Aus 376	156
Aus 646	155
Aus 741	157
Aus 742	180(T), 181(T), 182(T), 184(T)
Aus 743	180(T)
Aus 744	191(T), 192(T)
Aus 751	158
Aus 754	189(T), 195(T)
Aus 755	195(T)

Aus Chart	Notices
Aus 776	160
Aus 798	200(T)
Aus 800	165, 199(T), 200(T), 201(T)
Aus 814	172(T)
Aus 815	153, 172(T)
Aus 822	174(T), 175(T)
Aus 920	159
Aus 4721	179(T)
Aus 4723	180(T), 188(T), 190(T), 191(T)
Aus 4725	180(T), 188(T), 190(T), 191(T)
AX 00117T	195(T)
AX 00260S	174(T), 175(T)
AX 00260T	174(T), 175(T)
AX 00312U	179(T)
AX 00334S	195(T)
AX 00367S	174(T), 175(T)
AX 00754S	189(T), 195(T)
AX 00755S	195(T)
AX 00776S	160
AX 00822S	174(T), 175(T)
AX 04721U	179(T)
AX 04723U	180(T), 188(T), 190(T), 191(T)
AXA 0754S	189(T), 195(T)

INT Chart	Notices
INT 721	179(T)
INT 723	180(T), 188(T), 190(T), 191(T)
INT 725	180(T), 188(T), 190(T), 191(T)

151 AUSTRALIA - Product
UKHO (AA721747)

Admiralty publication

<i>NP No</i>	<i>Title</i>	<i>Date</i>	<i>Remarks</i>
NP62	Pacific Islands Pilot Volume 3 (Thirteenth Edition) 2013.	20/02/2014	The 2010 (Twelfth Edition) is cancelled.

For further details refer to the AHS website at www.hydro.gov.au for new edition and new chart stock arrival information.

When placing orders with a chart agent, mariners should advise whether their order pertains to the current edition or the new edition.

152* AUSTRALIA - QUEENSLAND - Brisbane River - Upper Lytton Reach - Berth
Maritime Safety Queensland (AA720618)

Aus 238 [108/2014]

Amend	name to <i>Graincorp Liquid Terminal</i>	27° 25'.46 S	153° 07'.66 E
-------	--	--------------	---------------

153* AUSTRALIA - QUEENSLAND - Caloundra - Light beacon southeastwards
Maritime Safety Queensland (AA712378)

Aus 235 [1136/2013]

Delete	topmark	26° 48'.7 S	153° 10'.6 E
--------	---------	-------------	--------------

Aus 815 [1146/2013]

Delete	topmark	26° 48'.7 S	153° 10'.6 E
--------	---------	-------------	--------------

154* AUSTRALIA - QUEENSLAND - Great Sandy Strait - Tin Can Inlet - Light beacons; navlines
Maritime Safety Queensland (AA234708, AA234709, AA234714, AA234909, AA234910)

Aus 240 [1146/2013]

Insert	light beacon, /so.2s, with triangular topmark apex down	25° 53'.29 S	153° 02'.79 E
	a dashed line in a direction 346.1° for a distance of 2000m, thence a continuous line for 5000m, with legend 166.1°, emanating from light	25° 53'.29 S	153° 02'.79 E
	a dashed line in a direction 236.1° for a distance of 900m, thence a continuous line for 1500m, with legend 056.1°, emanating from light	25° 53'.29 S	153° 02'.79 E
Move	light beacon	25° 52'.7 S	153° 02'.6 E
	to	25° 52'.74 S	153° 02'.64 E
	light beacon	25° 53'.5 S	153° 02'.5 E
	to	25° 53'.47 S	153° 02'.51 E
Delete	light beacon	25° 53'.3 S	153° 02'.8 E
	dashed and continuous line with legend 165.5°, emanating from light	25° 53'.3 S	153° 02'.8 E
	dashed and continuous line with legend 056.4°, emanating from light	25° 53'.3 S	153° 02'.8 E

155* PAPUA NEW GUINEA - Sek Harbour - Depths
Aquamap Pty Ltd (DHDB 2569130)

Aus 646 [745/2013]

Insert	depth, 0 ₃ m, enclosed by contour	5° 05'.123 S	145° 48'.061 E
	depth, 1 ₁ m, enclosed by contour	5° 05'.183 S	145° 48'.537 E
Substitute	depth, 0 ₄ m, for depth, 2 ₄ m	5° 04'.49 S	145° 48'.70 E
Delete	depth, 5 ₈ m	5° 05'.13 S	145° 48'.08 E
	depth, 3 ₇ m	5° 05'.20 S	145° 48'.51 E

156* **AUSTRALIA - TORRES STRAIT - Cook Reef - Depth northeastwards**
 UKHO (AA715981)

Aus 376 [1248/2013]

Insert depth, 10₆m

10° 10'.55 S 141° 38'.65 E

Delete depth, 12₆m

10° 10'.4 S 141° 39'.2 E

157* AUSTRALIA - WESTERN AUSTRALIA - Dampier - Pilot boarding place; radio reporting point; recommended track; anchorages; mooring area; depths
Dampier Port Authority (AA721146)

Aus 57 [115/2014]

Insert	pilot boarding place with magenta legend, <i>A</i>	20° 21'.00 S	116° 44'.00 E
	pilot boarding place with magenta legend, <i>B</i>	20° 23'.73 S	116° 42'.07 E
	pilot boarding place with magenta legend, <i>C</i>	20° 23'.75 S	116° 43'.73 E
	pilot boarding place with magenta legend, <i>D</i>	20° 28'.55 S	116° 44'.25 E
	pilot boarding place with magenta legend, <i>E</i>	20° 38'.50 S	116° 38'.97 E
	two-way radio reporting point, orient 000° - 180°	20° 22'.00 S	116° 44'.25 E
	recommended track with legend, 000° - 180°	20° 28'.55 S	116° 44'.25 E
		20° 22'.00 S	116° 44'.25 E
	anchor berth, desig <i>MA1</i> , with 0.25M radius swinging circle	20° 31'.95 S	116° 39'.66 E
	anchor berth, desig <i>MA2</i> , with 0.25M radius swinging circle	20° 31'.90 S	116° 40'.36 E
	anchor berth, desig <i>FDTs1</i> , with 0.25M radius swinging circle	20° 31'.90 S	116° 41'.06 E
	anchor berth, desig <i>PIE1</i> , with 0.25M radius swinging circle	20° 35'.64 S	116° 42'.22 E
	anchor berth, desig <i>PIE2</i> , with 0.25M radius swinging circle	20° 36'.12 S	116° 42'.47 E
	anchor berth, desig <i>PIE3</i> , with 0.25M radius swinging circle	20° 36'.56 S	116° 42'.16 E
	anchor berth, desig <i>Ell</i> , centred on	20° 38'.53 S	116° 39'.90 E
	dashed line, between	20° 31'.65 S	116° 39'.32 E
		20° 32'.25 S	116° 39'.46 E
	depth, 16 _s m	20° 31'.86 S	116° 40'.00 E
	depth, 16m	20° 31'.96 S	116° 41'.60 E
Move	legend, 036° - 216°	20° 25'.0 S	116° 43'.2 E
	to	20° 25'.83 S	116° 42'.72 E
Delete	pilot boarding area with legend, centred on	20° 24'.0 S	116° 43'.0 E
	anchor berth, desig <i>IA5</i> , with swinging circle, centred on	20° 32'.4 S	116° 43'.9 E
	anchor berth, desig <i>PIE2</i> , with swinging circle, centred on	20° 36'.9 S	116° 42'.1 E
	anchor berth, desig <i>PIE1</i> , with swinging circle, centred on	20° 37'.6 S	116° 42'.8 E
	anchorage with legend, <i>PIE3</i> , centred on	20° 36'.0 S	116° 42'.0 E
	anchor berth, desig <i>PIW4</i> , with swinging circle, centred on	20° 38'.4 S	116° 40'.2 E
	dashed line, between	20° 31'.7 S	116° 39'.6 E
		20° 31'.7 S	116° 39'.6 E
		20° 31'.9 S	116° 39'.1 E
		20° 32'.0 S	116° 39'.1 E
		20° 32'.3 S	116° 39'.4 E
		20° 38'.5 S	116° 38'.9 E
	depth, 11 ₇ m	20° 31'.9 S	116° 40'.4 E
	depth, 15 _s m	20° 32'.1 S	116° 39'.6 E
	depth, 16 ₄ m	20° 32'.0 S	116° 41'.0 E
	depth, 17 _s m	20° 32'.0 S	116° 41'.0 E
	recommended track, between	20° 25'.5 S	116° 43'.0 E
		20° 24'.8 S	116° 43'.5 E

Aus 58 [115/2014]

Insert	pilot boarding place with magenta legend, <i>A</i>	20° 21'.00 S	116° 44'.00 E
	pilot boarding place with magenta legend, <i>B</i>	20° 23'.73 S	116° 42'.07 E
	pilot boarding place with magenta legend, <i>C</i>	20° 23'.75 S	116° 43'.73 E
	pilot boarding place with magenta legend, <i>D</i>	20° 28'.55 S	116° 44'.25 E
	pilot boarding place with magenta legend, <i>E</i>	20° 38'.50 S	116° 38'.97 E
	two-way radio reporting point, orient 000° - 180°	20° 22'.00 S	116° 44'.25 E
	recommended track with legend, 000° - 180°	20° 28'.55 S	116° 44'.25 E
		20° 22'.00 S	116° 44'.25 E
	anchor berth, desig <i>MA1</i> , with 465m radius swinging circle	20° 31'.95 S	116° 39'.66 E
	anchor berth, desig <i>MA2</i> , with 465m radius swinging circle	20° 31'.90 S	116° 40'.36 E
	anchor berth, desig <i>FDTs1</i> , with 465m radius swinging circle	20° 31'.90 S	116° 41'.06 E
	anchor berth, desig <i>PIE1</i> , with 465m radius swinging circle	20° 35'.64 S	116° 42'.22 E
	anchor berth, desig <i>PIE2</i> , with 465m radius swinging circle	20° 36'.12 S	116° 42'.47 E
	anchor berth, desig <i>PIE3</i> , with 465m radius swinging circle	20° 36'.56 S	116° 42'.16 E
	anchor berth, desig <i>Ell</i> , centred on	20° 38'.53 S	116° 39'.90 E
	dashed line, between	20° 31'.65 S	116° 39'.32 E
		20° 32'.25 S	116° 39'.46 E
Move	legend, 036° - 216°	20° 25'.26 S	116° 43'.13 E
	to	20° 25'.92 S	116° 42'.63 E
Delete	pilot boarding area with legend, centred on	20° 24'.0 S	116° 43'.0 E

157*	AUSTRALIA - WESTERN AUSTRALIA - Dampier - Pilot boarding place; radio reporting point; recommended track; anchorages; mooring area; depths		
	anchor berth, desig IA5, with swinging circle, centred on	20° 32'.4 S	116° 43'.9 E
	anchor berth, desig PIE2, with swinging circle, centred on	20° 36'.9 S	116° 42'.1 E
	anchor berth, desig PIE1, with swinging circle, centred on	20° 37'.6 S	116° 42'.8 E
	anchorage with legend, PIE3, centred on	20° 36'.0 S	116° 42'.0 E
	anchor berth, desig PIW4, with swinging circle, centred on	20° 38'.4 S	116° 40'.2 E
	dashed line, between	20° 31'.65 S	116° 39'.60 E
		20° 31'.71 S	116° 39'.60 E
		20° 31'.85 S	116° 39'.08 E
		20° 32'.02 S	116° 39'.08 E
		20° 32'.25 S	116° 39'.36 E
	depth, 15 _g m	20° 31'.92 S	116° 40'.35 E
	recommended track, between	20° 24'.39 S	116° 43'.83 E
		20° 25'.44 S	116° 43'.02 E
Aus 59	[115/2014]		
Delete	anchor berth, desig PIE1, with swinging circle, centred on	20° 37'.6 S	116° 42'.8 E
	anchorage with legend, PIE3, centred on	20° 36'.15 S	116° 42'.60 E
Aus 60	[853/2013]		
Insert	pilot boarding place with magenta legend, <i>E</i>	20° 38'.50 S	116° 38'.97 E
	anchor berth, desig <i>Ell</i> , centred on	20° 38'.53 S	116° 39'.90 E
Delete	anchor berth, desig PIE2, with swinging circle, centred on	20° 36'.9 S	116° 42'.1 E
	anchor berth, desig PIE1, with swinging circle, centred on	20° 37'.6 S	116° 42'.8 E
	anchor berth, desig PIW4, with swinging circle, centred on	20° 38'.4 S	116° 40'.2 E
Aus 327	[118/2014]		
Move	pilot boarding place	20° 23'.6 S	116° 42'.7 E
	to	20° 21'.0 S	116° 44'.0 E
Aus 741	[117/2014]		
Insert	pilot boarding place with magenta legend, <i>A</i>	20° 21'.00 S	116° 44'.00 E
	pilot boarding place with magenta legend, <i>B</i>	20° 23'.73 S	116° 42'.07 E
	pilot boarding place with magenta legend, <i>C</i>	20° 23'.75 S	116° 43'.73 E
	pilot boarding place with magenta legend, <i>D</i>	20° 28'.55 S	116° 44'.25 E
	pilot boarding place with magenta legend, <i>E</i>	20° 38'.50 S	116° 38'.97 E
	two-way radio reporting point, orient 000° - 180°	20° 22'.00 S	116° 44'.25 E
Delete	pilot boarding area with legend, centred on	20° 24'.0 S	116° 43'.0 E

158* AUSTRALIA - WESTERN AUSTRALIA - Geraldton - Buoys
 Geraldton Port Authority (AA248871, AA466789, AA468123, AA716924, AA716925, AA)

Aus 81 [1143/2013]

Insert	special spar buoy, with topmark	28° 47'.763 S	114° 35'.993 E
Substitute	light beacon, <i>F.Iso.WRG.3s 5M</i> , without topmark for light beacon	28° 44'.76 S	114° 36'.54 E
	light beacon, <i>Q.R, F.Bu, F.WRG No16</i> , without topmark for light beacon	28° 45'.55 S	114° 36'.04 E
Amend	legend to <i>Dir 127.9°</i>	28° 41'.91 S	114° 33'.26 E
	light to <i>F.WRG.17m 8M (F.WRG.4M Day), F.Bu</i>	28° 44'.58 S	114° 37'.12 E
Delete	buoy	28° 47'.62 S	114° 34'.65 E

Aus 81 (plan, Port of Geraldton) [1143/2013]

Substitute	light beacon, <i>Q.R, F.Bu, F.WRG No16</i> , without topmark for light beacon	28° 45'.55 S	114° 36'.04 E
------------	---	--------------	---------------

Aus 332 [943/2012]

Amend	legend to <i>Dir 127.9°</i>	28° 42'.0 S	114° 33'.6 E
	light beacon to <i>F.Iso.WRG.3s</i>	28° 44'.8 S	114° 36'.5 E

Aus 333 [943/2012]

Amend	legend to <i>Dir 127.9°</i>	28° 42'.0 S	114° 33'.6 E
	light beacon to <i>F.Iso.WRG.3s</i>	28° 44'.8 S	114° 36'.5 E

Aus 751 [1085/2013]

Amend	legend to <i>Dir 127.9°</i>	28° 42'.0 S	114° 33'.6 E
	light beacon to <i>F.Iso.WRG.3s 5M</i>	28° 44'.8 S	114° 36'.5 E

159* INDIAN OCEAN - Christmas Island - Mooring buoys
 HMAS *Melville* (AA720585, AA720593)

Aus 920 (plan, Norris Point) [NE 27/7/2012]

Insert	yellow super mooring buoy	10° 27'.280 S	105° 42'.360 E
	yellow super mooring buoy	10° 27'.171 S	105° 42'.477 E
	yellow super mooring buoy	10° 27'.052 S	105° 42'.447 E
Delete	depth, 14m	10° 27'.04 S	105° 42'.45 E

160* AUSTRALIA - SOUTH AUSTRALIA - Port Lincoln - Light beacon
 Department of Planning, Transport and Infrastructure SA Notice 4/2014 (AA720714)

Aus 134 [NC 22/3/2013]

Amend	light beacon to <i>Fl.R.5s 2M</i>	34° 45'.12 S	135° 53'.87 E
-------	-----------------------------------	--------------	---------------

Aus 776 [585/2013]

Amend	light beacon to <i>Fl.R.5s</i>	34° 45'.1 S	135° 53'.9 E
-------	--------------------------------	-------------	--------------

AX 00776S [585/2013]

Amend	light beacon to <i>Fl.R.5s</i>	34° 45'.1 S	135° 53'.9 E
-------	--------------------------------	-------------	--------------

161* AUSTRALIA - VICTORIA - Barry Beach - Depths
 Gippsland Ports (DHDB 2555462)

Aus 182 (plan, Barry Beach Marine Terminal) [NE 29/11/2013]

Insert	accompanying block	38° 42'.9 S	146° 23'.0 E
--------	--------------------	-------------	--------------

162* AUSTRALIA - VICTORIA - Port Phillip - Aspendale to Mordialloc - Beacons
Victorian Notice 33/2014 (AA720707)

Aus 143 [124/2014]

Insert	special beacon, with topmark	38° 01'.86 S	145° 05'.97 E
	special beacon, with topmark	38° 00'.87 S	145° 05'.24 E
	special beacon, with topmark	38° 00'.38 S	145° 04'.73 E

Aus 155 [124/2014]

Insert	special beacon, with topmark	38° 01'.857 S	145° 05'.972 E
	special beacon, with topmark	38° 01'.685 S	145° 05'.870 E
	special beacon, with topmark	38° 00'.871 S	145° 05'.238 E
	special beacon, with topmark	38° 00'.616 S	145° 04'.886 E
	special beacon, with topmark	38° 00'.378 S	145° 04'.732 E

163* AUSTRALIA - TASMANIA - Denison Canal - Beacons
Marine and Safety Tasmania (AA717870), A Boon (AA721140)

Aus 169 (plan, Blackman Bay) [1149/2013]

Insert	starboard lateral beacon, with topmark	42° 53'.946 S	147° 47'.898 E
Move	beacon	42° 53'.77 S	147° 48'.06 E
	to	42° 53'.754 S	147° 48'.052 E
	beacon	42° 53'.37 S	147° 49'.00 E
	to	42° 53'.367 S	147° 48'.974 E
Delete	beacon	42° 53'.96 S	147° 47'.94 E

Aus 171 [1004/2013]

Insert	starboard lateral beacon, with topmark	42° 53'.95 S	147° 47'.90 E
Move	beacon	42° 53'.77 S	147° 48'.06 E
	to	42° 53'.75 S	147° 48'.05 E
	beacon	42° 53'.37 S	147° 49'.00 E
	to	42° 53'.37 S	147° 48'.97 E
Delete	beacon	42° 54'.0 S	147° 47'.9 E

164* AUSTRALIA - TASMANIA - Marion Bay - Depths
LADS Flight (DHDB 1899464)

Aus 170 [128/2014]

Insert	accompanying block A	42° 46'.0 S	147° 56'.0 E
	accompanying block B	42° 46'.0 S	148° 00'.0 E

165* AUSTRALIA - TASMANIA - Vansittart Island - Depth
A Boon (AA721158)

Aus 179 (plan, Franklin Sound) [46/2013]

Insert	upright sounding, 1 ₆ m, enclosed by approximate contour with legend, <i>Rep(2014)</i>	40° 16'.5 S	148° 20'.1 E
Delete	depth, 8m	40° 16'.5 S	148° 20'.2 E

Aus 800 [127/2014]

Insert	upright sounding, 1 ₆ m, enclosed by approximate contour with legend, <i>Rep(2014)</i>	40° 16'.5 S	148° 20'.1 E
--------	--	-------------	--------------

166(T)/2014 AUSTRALIA - NEW SOUTH WALES - Clarence River - North Channel - Light buoy off station
Port of Clarence River (Yamba) Notice 3(T)/2014 (AA719639)

The special light buoy, Q(4)Y.6s (29° 25'.39 S 153° 21'.20 E), is off station.

Chart temporarily affected - Aus 222

167(T)/2014 AUSTRALIA - QUEENSLAND - Airlie Beach - Muddy Bay - Wreck
Maritime Safety Queensland Notice 74(T)/2014 (AA721262)

A wreck marked by a special light buoy, Q.Y, exists in position 20° 16'.07 S 148° 43'.64 E.

Mariners are advised to navigate with caution in the area.

Chart temporarily affected - Aus 252 - Aus 253 - Aus 268

168(T)/2014 AUSTRALIA - QUEENSLAND - Brisbane River - Shafston Reach - Harbour works

Former Notice - 1213(T)/2013 is cancelled

Date - Until 31 July 2014

Maritime Safety Queensland Notices 562(T)/2013, 920(T)/2013, 54(T)/2014 (AA686411, AA708740, AA720023)

Harbour works associated with the reconstruction of the New Farm riverwalk are in progress.

A temporary 6 knot speed limit, marked by four special light buoys, Q.Y, exists between 27° 27'.83 S 153° 02'.15 E and 27° 27'.77 S 153° 02'.15 E; downstream to 27° 28'.37 S 153° 02'.38 E and 27° 28'.35 S 153° 02'.44 E.

Port lateral light buoys, *Fl.R.2-5s*, exist in positions 27° 27'.92 S 153° 02'.25 E and 27° 27'.87 S 153° 02'.21 E. The port lateral light buoy (27° 28'.09 S 153° 02'.32 E) has been repositioned to 27° 28'.10 S 153° 02'.30 E.

Three starboard lateral light buoys, *Fl.G.2-5s*, will be deployed to mark the starboard extremity of a reduced width channel and will be adjusted frequently to meet operational requirements.

The barges *MDT1803* and *AMS Gladstone*, along with two additional barges and tugs are on site and will monitor VHF Ch 13. The barges will display appropriate lights and shapes and the offshore anchor lines will be marked by special light buoys.

Mariners are advised to navigate with caution in the area.

Chart temporarily affected - Aus 238

169(T)/2014 AUSTRALIA - QUEENSLAND - Fitzalan Passage - Light buoy off station

Maritime Safety Queensland Notice 72(T)/2014 (AA721258)

The special light buoy, *Fl.Y.2-5s* (20° 18'.79 S 148° 56'.05 E), is off station.

Chart temporarily affected - Aus 252 - Aus 253 - Aus 254

170(T)/2014 AUSTRALIA - QUEENSLAND - Flinders Reef - Light buoy re-established

Former Notice - 56(T)/2014 is cancelled

Maritime Safety Queensland Notice 48/2014 (AA719029)

Cancel this notice on receipt.

Chart formerly affected - Aus 235 - Aus 236

171(T)/2014 AUSTRALIA - QUEENSLAND - Karumba - Depth information

Former Notice - 1015(T)/2013 is cancelled

Maritime Safety Queensland Notices 374(T)/2013, 89(T)/2014 (AA671724, AA722185))

Available depths as at 11 February 2014:

<i>Berth</i>	<i>Metres</i>	<i>Remarks</i>
* Entrance Channel	3.1	Shoaling exists on the northern side of the channel in the vicinity of position 17° 26'.64 S 140° 45'.32 E. Mariners are advised to navigate south of the centreline of the channel.
Mobil/Trinity Wharf	6.3	
Raptis Wharf	5.3	
Ruby Marine Wharf	5.3	
Gulf Freight Services Wharf	6.2	
Karumba Cold Stores Wharf	6.2	
Seaswift/Shell Wharf	6.2	
Karumba Livestock Loading Wharf	5.4	
Gulf Freight Services Ramp/Wharf	4.6	
Pasminco Export Wharf	4.2	
* Indicates revised entry.		

Chart temporarily affected - Aus 6

172(T)/2014 AUSTRALIA - QUEENSLAND - Moreton Bay - Brisbane River - Depth information

Former Notice - 134(T)/2014 is cancelled

Brisbane Port Corporation (AA721648), Maritime Safety Queensland (AA720618)

Available depths and under keel clearances (UKC) at 10 February 2014:

<i>Berth</i>	<i>Metres</i>	<i>Remarks</i>
* Fisherman Islands No12	13.9	
* Fisherman Islands No11	13.7	
Fisherman Islands No10	13.9	
* Fisherman Islands No9	14.0	
* Fisherman Islands No8	14.0	
Fisherman Islands No7	14.0	
Fisherman Islands No6	14.1	
Fisherman Islands No5	13.7	
* Fisherman Islands No4	13.6	
* Fisherman Islands No3	13.8	
* Fisherman Islands No2	13.7	
* Fisherman Islands No1	14.2	
* Fisherman Islands Grain and Woodchip	13.0	
* Caltex Fisherman Islands	14.5	
* Fisherman Islands Coal	14.0	
* Fisherman Islands General Purpose	11.0	
* BP Luggage Point	13.9	
* Caltex Products	9.9	
* Cement Australia Co Wharf	8.9	
* BP Products	10.7	
Shell	10.9	
* Graincorp Liquid Terminal	10.6	
Incitec North	10.1	
Incitec South	10.2	
Pinkenba 1	10.3	
Pinkenba 2	10.3	
Riverside Marina	-	
Sugar Terminal	9.8	
Cairncross Fitting Out Wharf	7.2	
* Cairncross Breasting Wharf	4.7	
Brisbane Naval Wharf	4.3	
* Maritime No1	9.0	
* Hamilton No4	10.3	
* Hamilton No1	8.3	
* Brisbane Cruise Ship Terminal	8.5	
	<i>Metres</i>	<i>UKC/Remarks</i>
<i>Moreton Bay:</i>		
North West Channel	15.0	2.3 (280m width)
North West Bypass Channel	9.2	1.6
Spitfire Channel	15.0	1.5 (600m width)
East Knoll Bypass Channel	6.0	1.4
East Channel	15.0	1.5 (300m width from western side)
Main Channel (M8 - M9)	10.0	1.8
Entrance Channel (E5 - EBCN)	14.7	1.5
<i>Brisbane River:</i>		
Outer Bar Cutting	13.8	1.46
Inner Bar Cutting	13.6	1.46
Fisherman Islands Swing Basin	13.5	1.3
River	9.1	0.6 / 0.9 (draft/tide)
Cement Australia Swing Basin	9.1	0.6 / 0.9 (draft/tide)
Pinkenba Swing Basin	9.1	0.6 / 0.9 (draft/tide)
Hamilton Swing Basin	8.9	0.6 / 0.9 (draft/tide)
* Indicates new or revised entry.		

Chart temporarily affected - Aus 235 - Aus 236 - Aus 237 - Aus 238 - Aus 814 - Aus 815

173(T)/2014 AUSTRALIA - QUEENSLAND - Port Douglas - Dicksons Inlet - Dredging operations*Date* - Until 13 March 2014

Maritime Safety Queensland (AA722121)

The dredge *Everglades* is conducting dredging operations in Dickson Inlet (16° 29'.00 S 145° 27'.55 E).

A floating pipeline exists on the western edge of the inlet.

The dredge will monitor VHF Ch 16.

Mariners are advised to navigate with caution in the area.

Chart temporarily affected - Aus 270

174(T)/2014 AUSTRALIA - QUEENSLAND - Shoalwater Bay - Raynham Island - Live firing completed*Former Notice* - 1025(T)/2013 is cancelled

Maritime Safety Queensland Notice 763(T)/2013 (AA698726)

Cancel this notice on receipt.

Chart formerly affected - Aus 260 - Aus 367 - Aus 822 - AX 00260S - AX 00260T - AX 00367S - AX 00822S

175(T)/2014 AUSTRALIA - QUEENSLAND - Shoalwater Bay - Townshend Island - Live firing*Date* - Until 7 March 2014

Maritime Safety Queensland Notice 61(T)/2014 (AA720905)

Live firing activities will be conducted in the Shoalwater Bay training area during the period 25 February to 7 March 2014.

Flares will be fired from aircraft manoeuvring within 10km radius of Townshend Island (22° 17'.00 S 150° 30'.00 E).

Mariners are advised to navigate with caution in the area.

Chart temporarily affected - Aus 260 - Aus 367 - Aus 822 - AX 00260S - AX 00260T - AX 00367S - AX 00822S

176(T)/2014 AUSTRALIA - QUEENSLAND - Townsville - Depth information*Former Notice* - 66(T)/2014 is cancelled

Maritime Safety Queensland Notice 75(T)/2014 (AA721250)

Available depths as at 6 February 2014:

	<i>Metres</i>	<i>Remarks</i>
* Sea Channel	11.9	
* Platypus Channel	11.9	
<i>Outer Harbour:</i>		
* Arrival Channel	6.1	
* Departure Channel	10.6	
<i>Inner Harbour:</i>		
* Harbour	11.5	
<i>Berths:</i>		
* No 1	11.8	
No 2	12.5	
No 3	11.4	
No 4	10.3	
No 7	11.7	
No 8	12.8	
No 9	11.4	
Between No 9 and No 10	7.3	Seaward of 0 mark at No 10
No 10	12.6	
* No 11	10.9	
* Ross River Channel	2.2	Entrance to beacon No 6
Ross River	-	Upstream of beacon No 6
Ross Creek	-	
* Indicates new or revised entry.		

Chart temporarily affected - Aus 256 - Aus 257

177(T)/2014 AUSTRALIA - QUEENSLAND - Whitehaven Bay - Light beacon destroyed*Former Notice* - 213(T)/2013 is cancelled

Maritime Safety Queensland Notice 73(T)/2014 (AA721260)

The north cardinal light beacon, Q (20° 17'.53 S 149° 03'.35 E), has been destroyed.

Chart temporarily affected - Aus 252 - Aus 253**178(T)/2014 AUSTRALIA - NORTHERN TERRITORY - Darwin - Cullen Bay - Light altered**

Darwin Port Corporation Notice 12(T)/2014 (AA721033)

The light (12° 27'.05 S 130° 49'.15 E) has been temporarily altered to *F*.**Chart temporarily affected - Aus 24****179(T)/2014 AUSTRALIA - TIMOR SEA - Sahul Banks - Drill rig***Former Notice* - 1169(T)/2013 is cancelled*Date* - Until 4 March 2014

Australian Maritime Safety Authority Auscoast Warning 27/2014 (AA719714), Eni Australia Ltd (AA720867)

Drill rig *Stena Clyde* is conducting drilling operations in position 10° 40'.52 S 126° 11'.96 E.**Chart temporarily affected - Aus 312 - Aus 4721 (INT 721) - AX 00312U - AX 04721U****180(T)/2014 AUSTRALIA - WESTERN AUSTRALIA - Barrow Island - Survey operations completed***Former Notice* - 76(T)/2014 is cancelled

Apache Energy Ltd (AA719797)

Cancel this notice on receipt.

Chart formerly affected - Aus 328 - Aus 742 - Aus 743 - Aus 4723 (INT 723) - Aus 4725 (INT 725) - AX 04723U**181(T)/2014 AUSTRALIA - WESTERN AUSTRALIA - Barrow Island - Pipeline***Former Notice* - 260(T)/2012 is cancelled

Chevron Australia Pty Ltd (AA721646)

Cancel this notice on receipt.

Chart formerly affected - Aus 327 - Aus 328 - Aus 742**182(T)/2014 AUSTRALIA - WESTERN AUSTRALIA - Barrow Island - Pipeline***Date* - Until 13 March 2014

Chevron Australia Pty Ltd (AA721646)

SPV *Solitare* is conducting pipe laying operations between the following positions:

20° 34'.92 S 115° 08'.99 E

20° 33'.97 S 115° 04'.62 E

20° 29'.25 S 114° 53'.86 E

20° 24'.56 S 114° 50'.87 E

20° 31'.33 S 114° 49'.35 E.

Mariners are advised to navigate with caution in the area.

Chart temporarily affected - Aus 328 - Aus 742

183(T)/2014 AUSTRALIA - WESTERN AUSTRALIA - Barrow Island - Pipeline*Date* - Until 21 March 2014

Apache Energy Ltd (AA721970)

SPV *Lorelay* is conducting pipe laying operations in an area bounded by the following positions:

19° 54'.71 S 115° 23'.06 E

19° 56'.06 S 115° 23'.87 E

20° 02'.51 S 115° 11'.87 E

20° 01'.16 S 115° 11'.06 E.

Mariners are advised to navigate with caution in the area.

Chart temporarily affected - Aus 327 - Aus 328**184(T)/2014 AUSTRALIA - WESTERN AUSTRALIA - Barrow Island - Rock dumping completed***Former Notice* - 568(T)/2013 is cancelled

Chevron Australia Pty Ltd (AA717869)

Cancel this notice on receipt.

Chart formerly affected - Aus 327 - Aus 328 - Aus 742**185(T)/2014 AUSTRALIA - WESTERN AUSTRALIA - Dampier Archipelago - Scientific instruments northwestwards***Former Notice* - 1171(T)/2013 is cancelled*Date* - Until 30 June 2014

MetOcean Engineers (AA706103, AA706104)

Scientific instruments exist as follows:

<i>Position</i>	<i>Remarks</i>
19° 36'.00 S 116° 06'.70 E	lit buoy, Q(5)Y.20s
19° 35'.91 S 116° 06'.85 E	5 poly floats

Chart temporarily affected - Aus 327**186(T)/2014 AUSTRALIA - WESTERN AUSTRALIA - Koombana Bay - Scientific instrument recovered***Former Notice* - 474(T)/2012 is cancelled

Department of Transport WA (AA719718)

Cancel this notice on receipt.

Chart formerly affected - Aus 115**187(T)/2014 AUSTRALIA - WESTERN AUSTRALIA - Montebello Islands - Rock dumping northwards***Date* - Until 4 April 2014

Chevron Australia Pty Ltd (AA717869)

SDV *Joseph Plateau* is conducting rock dumping operations in an area 0.27M radius of position 19° 55'.76 S 115° 23'.04 E. An exclusion zone exists within the area.**Chart temporarily affected - Aus 327 - Aus 328**

188(T)/2014 AUSTRALIA - WESTERN AUSTRALIA - Montebello Saddle - Seismic survey*Date* - Until 31 March 2014

Woodside Energy Ltd (AA721268)

SSV *Polarcus Alima*, with a 7000m towed array, and support vessels *Sealink161* and *Empress* are conducting a survey in the area bounded by the following positions:

20° 21'.80 S 113° 27'.21 E

20° 21'.80 S 113° 47'.95 E

20° 58'.04 S 113° 47'.96 E

20° 58'.04 S 113° 31'.44 E

20° 53'.04 S 113° 31'.44 E

20° 53'.04 S 113° 27'.21 E.

Chart temporarily affected - Aus 328 - Aus 329 - Aus 4723 (INT 723) - Aus 4725 (INT 725) - AX 04723U**189(T)/2014 AUSTRALIA - WESTERN AUSTRALIA - Mullaloo - Light buoy***Date* - Until 31 May 2014

Department of Transport WA Notice 192/2013 (AA720974)

An orange spherical light buoy, *Fl(5)Y.20s*, exists in position 31° 47'.13 S 115° 43'.84 E.

Chart temporarily affected - Aus 754 - AX 00754S - AXA 0754S**190(T)/2014 AUSTRALIA - WESTERN AUSTRALIA - North West Cape - Drill rig northwestwards***Former Notice* - 87(T)/2014 is cancelled*Date* - Until 3 March 2014MODU *Jack Bates* (AA719796)

Drill rig *Jack Bates* is conducting drilling operations in position 20° 57'.17 S 113° 41'.72 E.

Chart temporarily affected - Aus 328 - Aus 329 - Aus 4723 (INT 723) - Aus 4725 (INT 725) - AX 04723U**191(T)/2014 AUSTRALIA - WESTERN AUSTRALIA - North West Cape - FPSO off station***Date* - Until 16 May 2014

Apache Energy Ltd (AA721645)

The FPSO *Ningaloo Vision* (21° 24'.2 S 114° 05'.3 E) is off station; a riser turret mooring exists in situ.

Chart temporarily affected - Aus 328 - Aus 329 - Aus 744 - Aus 4723 (INT 723) - Aus 4725 (INT 725) - AX 04723U**192(T)/2014 AUSTRALIA - WESTERN AUSTRALIA - North West Cape - Pipeline northwards***Former Notice* - 527(T)/2013 is cancelled

Apache Energy Ltd (AA721970)

Note: charts will be updated on receipt of survey information.

Cancel this notice on receipt.

Chart formerly affected - Aus 328 - Aus 329 - Aus 744

193(T)/2014 AUSTRALIA - WESTERN AUSTRALIA - Port Hedland - South West Creek - Dredging operations*Date* - Until 31 March 2014

Port Hedland Port Authority Notice 15(T)/2014 (AA721759)

The dredge *Fernao De Magalhaes* and support vessels *DN203* and *DN57* are conducting dredging operations in South West Creek.

An exclusion zone extends to all waters south of the line defined by position 20° 19'.58 S 118° 34'.05 E and 20° 19'.73 S 118° 34'.26 E. A 50m exclusion zone exists around the dredge.

Vessels will display appropriate lights and shapes and will monitor VHF Ch 12, Ch 16 and Ch 79.

Mariners are advised to navigate with caution in the area.

Chart temporarily affected - Aus 52 - Aus 54

194(T)/2014 AUSTRALIA - SOUTH AUSTRALIA - Port Douglas - Light beacon destroyed

Department of Planning, Transport and Infrastructure SA Notice 5/2014 (AA721989)

No7 light beacon, *Q.G* (34° 32'.29 S 135° 21'.88 E), has been destroyed; a starboard lateral light buoy, *Q.G*, exists in situ.

Chart temporarily affected - Aus 121

195(T)/2014 AUSTRALIA - VICTORIA - Garden Island - Submarine pipeline*Date* - Until 31 March 2014

Department of Transport WA Notice 47/2014 (AA720971)

Barge *ASL96* and support vessels are laying a submarine pipeline between 32° 14'.55 S 115° 40'.80 E and 32° 15'.06 S 115° 39'.06 E.

All vessels with display appropriate lights and shapes and will monitor VHF Ch 16 and Ch 74.

Mariners are advised to navigate with caution in the area.

Chart temporarily affected - Aus 111 - Aus 117 - Aus 334 - Aus 754 - Aus 755 - AX 00117T - AX 00334S - AX 00754S - AX 00755S - AXA 0754S

196(T)/2014 AUSTRALIA - VICTORIA - Port Phillip - River Yarra - Victoria Dock - Obstruction

Victorian Notice 31(T)/2014 (AA720364)

An obstruction exists in position 37° 49'.10 S 144° 55'.76 E. The berth east of the 230 chainage mark is temporarily closed.

Chart temporarily affected - Aus 154

197(T)/2014 AUSTRALIA - VICTORIA - Port Phillip - Mornington - Harbour works*Date* - Until 23 December 2014

Victorian Notice 30(T)/2014 (AA721994)

Works associated with the reconstruction of Mornington Pier are in progress in an area marked by special conical light buoys, *Fl.Y.3s*, bounded by the following positions:

38° 12'.70 S 145° 02'.13 E

38° 12'.68 S 145° 02'.11 E

38° 12'.72 S 145° 02'.01 E

38° 12'.76 S 145° 02'.01 E.

All hazards to navigation will display appropriate lights and shapes.

Mariners are advised to navigate with caution in the area.

Chart temporarily affected - Aus 143

198(T)/2014 AUSTRALIA - TASMANIA - D'Entrecasteaux Channel - Marine farm*Former Notice* - 1125(T)/2013 is cancelled*Date* - Until 3 March 2014

Marine and Safety Tasmania Notice 21/2014 (AA721016)

Mariners are advised the marine farm has extended its boundaries as follows:

43° 18'.22 S 147° 06'.09 E

43° 18'.22 S 147° 06'.63 E

43° 19'.01 S 147° 06'.63 E

43° 19'.01 S 147° 06'.09 E.

Chart temporarily affected - Aus 173**199(T)/2014 AUSTRALIA - TASMANIA - Franklin Sound - Great Dog Island to Vansittart Island - Lights unreliable**

Marine and Safety Tasmania Notice M24/2014 (AA719636)

The following lights are unreliable:

<i>Position</i>	<i>Remarks</i>
40° 14'.80 S 148° 15.78 E	<i>F.WRG. 8m 6M</i>
40° 16'.24 S 148° 17.32 E	<i>F.WRG. 7/5M</i>

Chart temporarily affected - Aus 179 - Aus 800**200(T)/2014 AUSTRALIA - TASMANIA - Franklin Sound - Lady Barron to Apple Orchard Point - Light restored; lights unreliable***Former Notice* - 148(T)/2014 is cancelled

Marine and Safety Tasmania Notice M24/2014 (AA719636)

Cancel this notice on receipt.

Chart formerly affected - Aus 179 - Aus 798 - Aus 800**201(T)/2014 AUSTRALIA - TASMANIA - Franklin Sound - Lady Barron - Shoaling; light unreliable**

Marine and Safety Tasmania Notice M144/2011 (AA569730)

Shoaling exists in the vicinity of position 40° 14'.8 S 148° 25.7 E. The light, *F.WRG. 48m 10M* (40° 12'.45 S 148° 14.76 E), is unreliable due to shoaling.

Mariners are advised to navigate with caution in the area.

Chart temporarily affected - Aus 179 - Aus 800

HYDROGRAPHIC REPORTS

<i>Locality</i>	<i>Report</i>	<i>Ship/Authority</i>	<i>Observer</i>
PRODUCT- Annual Notice 2014	Latitude error	HMAS <i>Melville</i>	D Martin
INDIAN OCEAN- Christmas Island	Mooring buoys		
TAS- Vansittart Island	Depths		A Boon

NAVIGATION WARNINGS

The following radio messages have been received during the period to 13 February 2014. Signal copies of these messages may be destroyed. It is recommended that the reprint of Navigational Warnings should be kept in a file or a book divided into areas. Cancellation should be made on receipt of signals and reprints.

Rigs on location other than those listed in the latest Section III summary are the subject of Radio Navigational Warnings. Rigs in transit will not be the subject of Warnings.

AUSCOAST WARNING

025 Cancelled.
 026 Cancelled.
 027 Drill rig *Stena Clyde* in position 10° 40'.51 S 126° 11'.95 E. 2.5M clearance requested.
 028 Drill rig *Jack Bates* in position 20° 57'.10 S 113° 41'.43 E. 2.5M clearance requested.
 029 Cancelled.
 030 Cancelled.
 031 Cancelled.
 032 Cancelled.
 033 Cancelled.
 034 Cancelled.
 035 Special purpose vessel *Lorelay* conducting pipelaying and subsea operations in position 20° 01'.0 S 115° 12'.0 E. 2M clearance requested.
 036 Cancelled.
 037 Cancelled.
 038 Cape Capricorn light K 2992.1 in position 23° 29'.19 S 151° 14'.19 E red sector unlit.
 039 Cancelled.

NAVAREA X WARNINGS

005 Cancelled.
 006 Cancelled.
 007 Cancelled.
 008 Cancelled.
 009 Unlit yellow 2.6m diameter 4 tonne steel Tsunami Warning System buoy adrift in vicinity 14° 25'.04 S 149° 13'.15 E at 070100UTC FEB 14. Potential risk of explosion from batteries onboard if buoy tampered with.
 010 Cancelled.

Navigational warnings in force as at 130001UTC FEB 14.**Auscoast**

2013 099 134 257 263 264 270 289 295 296

2014 003 007 014 016 017 018 019 020 023 027 028 035 038

Navarea X

2014 009

Summary of mobile drilling rigs as at 130001UTC FEB 14.

<i>Name</i>	<i>Position</i>
Stena Clyde	10° 40'.51 S 126° 11'.95 E
Ensco 109	12° 40'.30 S 124° 32'.30 E
Noble Clyde Boudreaux	13° 49'.00 S 123° 19'.35 E
Transocean Legend	13° 19'.00 S 122° 16'.45 E
Atwood Osprey	19° 54'.35 S 115° 16'.12 E
Atwood Eagle	20° 04'.20 S 115° 09'.70 E
Deepwater Frontier	19° 47'.55 S 114° 38'.95 E
Atwood Falcon	21° 21'.00 S 114° 04'.65 E
Nan Hai 6	21° 32'.02 S 114° 09'.10 E
Jack Bates	20° 57'.10 S 113° 41'.43 E
Ocean America	20° 05'.46 S 112° 53'.20 E

NAVAREA XIV WARNINGS

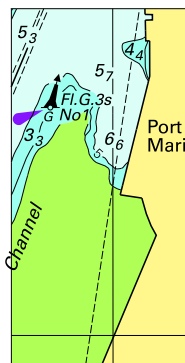
Nil.

Navarea XIV warnings in force as at 130001UTC FEB 14.

2013 098

2014 003

To accompany Australian Notice to Mariners 161/2014



Block for Aus 182

© Commonwealth of Australia 2014
(47.1 x 23.2mm)

To accompany Australian Notice to Mariners 164/2014

