



31 January 2014

Edition 2

Australian Notices to Mariners are the authority for correcting Australian Charts and Publications

AUSTRALIAN NOTICES TO MARINERS

Notices 104 - 150



Published fortnightly by the Australian Hydrographic Service

Commodore B.K. BRACE RAN
Hydrographer of Australia

SECTIONS.

- I. Australian Notices to Mariners, including blocks and notes.
- II. Hydrographic Reports.
- III. Navigational Warnings.

SUPPLEMENTS.

- I. Tracings
- II. Cumulative List of Australian Notices to Mariners.
- III. Cumulative List of Temporary and Preliminary Australian Notices to Mariners.
- IV. Temporary and Preliminary Notices in force.
- V. Amendments to Admiralty List of Lights and Fog Signals (Vol K), Radio Signals (NP 281(2), 282, 283(2), 285, 286(4)) and Sailing Directions (NP 9, 13, 14, 15, 33, 34, 35, 36, 39, 44, 51, 60, 61, 62, 100, 136).

© Commonwealth of Australia 2014

This work is copyright. Apart from any use permitted under the Copyright Act 1968, no part may be reproduced by any process, adapted, communicated or commercially exploited without prior written permission from The Commonwealth represented by the Australian Hydrographic Service.

IMPORTANT NOTICE

This edition of Notices to Mariners includes all significant information affecting AHS products which the AHS has become aware of since the last edition. All reasonable efforts have been made to ensure the accuracy and completeness of the information, including third party information, on which these updates are based. The AHS regards third parties from which it receives information as reliable, however the AHS cannot verify all such information and errors may therefore exist. The AHS does not accept liability for errors in third party information.

GENERAL INSTRUCTIONS

The substance of these notices should be inserted on the charts affected.

Bearings are referred to the true compass and are reckoned clockwise from North; those relating to lights are given as seen by an observer from seaward. Positions quoted in permanent notices relate to the horizontal datum for the chart(s). When preliminary or temporary notices affect multiple charts, positions will be provided in relation to only one horizontal datum and that datum will be specified. When the multiple charts do not have a common horizontal datum, mariners will be required to adjust the position(s) for those charts not on the specified datum. The range quoted for a light is its nominal range. Depths are with reference to the chart datum of each chart. Heights are above mean high water springs or mean higher high water, as appropriate.

The capital letter (P) or (T) after the number of any notice denotes a preliminary or temporary notice respectively, which are contained separately at the end of the permanent notices. A star (*) adjacent to the number of a notice indicates that the notice is based on original information.

REPORTING OF DANGERS

Mariners are particularly requested to notify the AUSTRALIAN HYDROGRAPHIC SERVICE, Locked Bag 8801 Wollongong, NSW 2500 (Fax 02-4223 6599, e-mail Hydro.NTM@defence.gov.au or, alternatively by filling in and submitting the [Hydrographic Notes](#) forms located on the web site – www.hydro.gov.au), immediately on the discovery of new dangers or suspected dangers to navigation. For changes or defects in aids to navigation notify AusSAR (Fax 02-6230 6868 or email rccaus@amsa.gov.au).

AUTHORISED USE

Copies of Australian notices are available free of charge from the Australian Hydrographic Service (AHS) website (www.hydro.gov.au) and through the eNotices (email) service (www.hydro.gov.au/enotices/enotices.htm).

Individual Notices may be copied for the purpose of inserting Notice substance on official charts and publications. Paper copies may be printed by chart agents and distributed to customers on a cost recovery basis. Participating chart agents are listed on the AHS website as providing a 'Paper Notices to Mariners' service (www.hydro.gov.au/prodserv/distributors/distributors.htm). Copies of the notices may not be sold for profit without prior written agreement.

NUMERICAL INDEX OF NOTICES TO MARINERS

Edition No 2

Notices	Aus Chart, INT Chart, ENC Cell, AHP, BA Pubs
104	Amendment to Australian Notice to Mariners No 2
105	Amendment to Seafarers Handbook for Australian Waters AHP20
106	Aus 811
107	Aus 238
108	Aus 238
109	Aus 244, 245
110	Aus 259
111	Aus 237
112	Aus 236
113	Aus 26, 27, AX 00026T
114	Aus 309, 310, 4721, INT 721, AX 00309U, 00309T, 00310U, 04721U
115	Aus 57, 58, 59
116	Aus 116
117	Aus 741
118	Aus 327, 329
119	Aus 117, 334, 754, AX 00117T, 00334S, 00754S, AXA 0754S
120	Aus 745
121	Aus 64, 743, 744
122	Aus 127
123	Aus 343, AX 00343S
124	Aus 143, 155
125	Aus 802
126	Aus 173
127	Aus 800
128	Aus 170
129(T)	Aus 263
130(T)	Aus 244, 245, 819
131(T)	Aus 246, 819
132(T)	Aus 258, 828, 829
133(T)	Aus 235
134(T)	Aus 235, 236, 237, 238, 814, 815
135(T)	Aus 230
136(T)	Aus 257
137(T)	Aus 58, 59, 60
138(T)	Aus 327, 4723, INT 723, AX 04723U
139(T)	Aus 329, 4723, INT 723, AX 04723U
140(T)	Aus 329, 4723, 4725, INT 723, 725, AX 04723U
141(T)	Aus 116
142(T)	Aus 328, 742, 4723, INT 723, AX 04723U
143(T)	Aus 327, 4723, INT 723, AX 04723U
144(T)	Aus 327, 328, 329, 4603, INT 603, AX 04603U
145(T)	Aus 57, 741, 742
146(T)	Aus 64, 328, 743, 744
147(T)	Aus 143, 144, 158
148(T)	Aus 179, 798, 800
149(T)	Aus 172
150(T)	Aus 168

NUMERICAL INDEX OF CHARTS AFFECTED

Edition No 2

Aus Chart	Notices
Aus 26	113
Aus 27	113
Aus 57	115, 145(T)
Aus 58	115, 137(T)
Aus 59	115, 137(T)
Aus 60	137(T)
Aus 64	121, 146(T)
Aus 116	116, 141(T)
Aus 117	119
Aus 127	122
Aus 143	124, 147(T)
Aus 144	147(T)
Aus 155	124
Aus 158	147(T)
Aus 168	150(T)
Aus 170	128
Aus 172	149(T)
Aus 173	126
Aus 179	148(T)
Aus 230	135(T)
Aus 235	133(T), 134(T)
Aus 236	112, 134(T)
Aus 237	111, 134(T)
Aus 238	107, 108, 134(T)
Aus 244	109, 130(T)
Aus 245	109, 130(T)
Aus 246	131(T)
Aus 257	136(T)
Aus 258	132(T)
Aus 259	110
Aus 263	129(T)
Aus 309	114
Aus 310	114
Aus 327	118, 138(T), 143(T), 144(T)
Aus 328	142(T), 144(T), 146(T)
Aus 329	118, 139(T), 140(T), 144(T)
Aus 334	119
Aus 343	123
Aus 741	117, 145(T)
Aus 742	142(T), 145(T)
Aus 743	121, 146(T)
Aus 744	121, 146(T)
Aus 745	120
Aus 754	119
Aus 798	148(T)
Aus 800	127, 148(T)
Aus 802	125
Aus 811	106
Aus 814	134(T)
Aus 815	134(T)
Aus 819	130(T), 131(T)
Aus 828	132(T)
Aus 829	132(T)
Aus 4603	144(T)

Aus Chart	Notices
Aus 4721	114
Aus 4723	138(T), 139(T), 140(T), 142(T), 143(T)
Aus 4725	140(T)
AX 00026T	113
AX 00117T	119
AX 00309T	114
AX 00309U	114
AX 00310U	114
AX 00334S	119
AX 00343S	123
AX 00754S	119
AX 04603U	144(T)
AX 04721U	114
AX 04723U	138(T), 139(T), 140(T), 142(T), 143(T)
AXA 0754S	119

INT Chart	Notices
INT 603	144(T)
INT 721	114
INT 723	138(T), 139(T), 140(T), 142(T), 143(T)
INT 725	140(T)

104 AUSTRALIA - Product - Amendment to Australian Notice to Mariners No 2

Australian Hydrographic Service (AA717201)

Page 14

Insert new Hong Kong chart agent:**Bogerd Martin Marine (HK) Ltd**

2501 Ever Gain Plaza

Tower 2, 88 Container Port Road

Kwa Chung NT

Telephone

(852) 3565 4410

C

Fax

(852) 3565 4414

Email

sales@martinhk.com.hk

Website

www.martin.be

105 AUSTRALIA - Product - Amendment to Seafarers Handbook for Australian Waters AHP20

Australian Maritime Safety Authority (AA717123), Maritime Safety Queensland Notice 959/2013 (AA714651), Sydney Ports Corporation Notices 39/2013, 2/2014 (AA715885, AA715883)

Chapter 11 - Maritime Trade Operations / Naval Cooperation and Guidance for Shipping

Page 202 (11.11.4) Warnings

Substitute accompanying block

Chapter 12 - Queensland Ports

Page 210 (12.5.3) Brisbane

Substitute accompanying block

Chapter 12 - New South Wales Ports

Page 214 (12.6.2) Botany Bay table - Sydney Ports VTS VHF channel

Delete Ch 16 and 13

Page 216 (12.6.2) Sydney table - VTS telephone number

Delete +61 2 9296 4000*Insert* +61 2 9296 4003**106* AUSTRALIA - NEW SOUTH WALES - Fish Rock - Light**

C Culley, NSW Roads and Maritime Services (AA717609)

Aus 811 [1192/2013]Amend light to *Fl(2)10s*

30° 56'.4 S

153° 06'.0 E

107* AUSTRALIA - QUEENSLAND - Brisbane River - Bulimba Reach - Overhead power cable

Maritime Safety Queensland (AA715886)

Aus 238 [1196/2013]Amend vertical clearance to *41m*

27° 26'.96 S

153° 02'.98 E

Aus 238 (plan, Bulimba Reach) [1196/2013]Amend vertical clearance to *41m*

27° 26'.94 S

153° 02'.99 E

108* AUSTRALIA - QUEENSLAND - Brisbane River - Lytton Reach - Lights

Maritime Safety Queensland Notice 26/2014 (AA717541)

Aus 238 [107/2014]Amend light to *F.Bu (F.Y Day) No7F*

27° 25'.60 S

153° 08'.12 E

light to *F.Bu (F.Y Day) No7R*

27° 25'.72 S

153° 08'.02 E

109* AUSTRALIA - QUEENSLAND - Gladstone - Fishermans Landing Wharves - Light beacons

Maritime Safety Queensland (AA716963)

Aus 244 (plan, Fishermans Landing Wharves) [1042/2013]Insert east cardinal light beacon, *Q(3)10s*, with topmark

23° 46'.943 S

151° 10'.235 E

starboard lateral light beacon, *Fl.G.2·5s*, with topmark

23° 46'.998 S

151° 10'.170 E

port lateral light beacon, *Fl.R.2·5s*, with topmark

23° 47'.088 S

151° 10'.177 E

Aus 245 [1247/2013]Insert east cardinal light beacon, *Q(3)10s*, with topmark

23° 46'.943 S

151° 10'.235 E

110* AUSTRALIA - QUEENSLAND - Hinchinbrook Channel - Hecate Point - Light buoy

Maritime Safety Queensland Notice 15(T)/2014 (AA715757)

Aus 259 [1244/2012]

Move	light buoy	18° 14'.9 S	146° 04'.0 E
	to	18° 14'.82 S	146° 03'.97 E

111* AUSTRALIA - QUEENSLAND - Moreton Bay - Brisbane River - Entrance Channel - Light beacon

Maritime Safety Queensland Notice 23/2014 (AA717599)

Aus 237 [1196/2013]

Move	light beacon	27° 19'.20 S	153° 12'.24 E
	to	27° 19'.224 S	153° 12'.221 E

112* AUSTRALIA - QUEENSLAND - Moreton Bay - Scarborough - Light beacons

Maritime Safety Queensland Notice 27/2014 (AA717560)

Aus 236 [35/2014]

Amend	light beacon to <i>Fl.G.3s No3</i>	27° 11'.4 S	153° 05'.6 E
	light beacon to <i>Fl.R.3s No6</i>	27° 11'.8 S	153° 05'.6 E
	light beacon to <i>Fl.G.3s No7</i>	27° 12'.2 S	153° 05'.6 E

113* AUSTRALIA - NORTHERN TERRITORY - Darwin - Middle Arm - Lit mooring buoys

Darwin Port Corporation Notice 5/2014 (AA715768)

Aus 26 [41/2014]

Insert	lit barrel mooring buoy, <i>Fl.Y.5s</i>	12° 33'.79 S	130° 51'.37 E
--------	---	--------------	---------------

Aus 27 [41/2014]

Insert	lit barrel mooring buoy, <i>Fl.Y.5s</i>	12° 33'.788 S	130° 51'.367 E
--------	---	---------------	----------------

AX 00026T [41/2014]

Insert	lit barrel mooring buoy, <i>Fl.Y.5s</i>	12° 33'.79 S	130° 51'.37 E
--------	---	--------------	---------------

114* AUSTRALIA - NORTHERN TERRITORY - Parry Shoal - Depths
 HMAS *Leeuwin* HI 533 (DHDB 2490916)

Aus 309 [1255/2013]

Insert	depth, 11_2m , and extend contour E to enclose	11° 13'.29 S	129° 39'.88 E
	depth, 10_2m , and extend contour E to enclose	11° 12'.27 S	129° 42'.71 E
Delete	depth, 12m	11° 13'.3 S	129° 39'.2 E
	depth, 10_8m	11° 12'.5 S	129° 42'.6 E

Aus 310 [389/2012]

Insert	depth, 10_2m , and extend contour E to enclose	11° 12'.27 S	129° 42'.71 E
Delete	depth, 10_8m	11° 12'.5 S	129° 42'.6 E

Aus 4721 (INT 721) [1204/2013]

Substitute	depth, 10_2m , for depth, 10_8m	11° 12'.0 S	129° 43'.0 E
------------	-------------------------------------	-------------	--------------

AX 00309T [1255/2013]

Insert	depth, 11_2m , and extend contour E to enclose	11° 13'.29 S	129° 39'.88 E
	depth, 10_2m , and extend contour E to enclose	11° 12'.27 S	129° 42'.71 E
Delete	depth, 12m	11° 13'.3 S	129° 39'.2 E
	depth, 10_8m	11° 12'.5 S	129° 42'.6 E

AX 00309U [1255/2013]

Insert	depth, 11_2m , and extend contour E to enclose	11° 13'.29 S	129° 39'.88 E
	depth, 10_2m , and extend contour E to enclose	11° 12'.27 S	129° 42'.71 E
Delete	depth, 12m	11° 13'.3 S	129° 39'.2 E
	depth, 10_8m	11° 12'.5 S	129° 42'.6 E

AX 00310U [NE 20/4/2012]

Insert	depth, 10_2m , and extend contour E to enclose	11° 12'.27 S	129° 42'.71 E
Delete	depth, 10_8m	11° 12'.5 S	129° 42'.6 E

AX 04721U [1204/2013]

Substitute	depth, 10_2m , for depth, 10_8m	11° 12'.0 S	129° 43'.0 E
------------	-------------------------------------	-------------	--------------

115* AUSTRALIA - WESTERN AUSTRALIA - Dampier - Woodside Channel - Light beacons

Former Notice - 1115(P)/2013 is cancelled
Dampier Port Authority (AA718039)

Aus 57 [853/2013]

Amend	light beacon to <i>Fl.R.3s</i>	20° 26'.1 S	116° 43'.8 E
-------	--------------------------------	-------------	--------------

Aus 58 [1207/2013]

Amend	light beacon to <i>Fl.R.3s</i>	20° 26'.11 S	116° 43'.77 E
	light beacon to <i>Fl.R.3s</i>	20° 30'.81 S	116° 43'.58 E
	light beacon to <i>Fl.R.3s</i>	20° 32'.10 S	116° 43'.36 E
	light beacon to <i>Fl.R.3s</i>	20° 33'.26 S	116° 43'.79 E
	light beacon to <i>Fl.R.3s</i>	20° 34'.21 S	116° 44'.91 E
	light beacon to <i>Fl.G.3s</i>	20° 34'.32 S	116° 44'.81 E
	light beacon to <i>Fl.Y.3s</i>	20° 34'.80 S	116° 45'.67 E
	light beacon to <i>Fl.G.3s</i>	20° 34'.88 S	116° 45'.42 E
	light beacon to <i>Fl.G.3s</i>	20° 35'.08 S	116° 45'.45 E

Aus 59 [1207/2013]

Amend	light beacon to <i>Fl.R.3s</i>	20° 33'.26 S	116° 43'.79 E
	light beacon to <i>Fl.R.3s</i>	20° 34'.21 S	116° 44'.91 E
	light beacon to <i>Fl.G.3s</i>	20° 34'.32 S	116° 44'.81 E
	light beacon to <i>Fl.Y.3s</i>	20° 34'.80 S	116° 45'.67 E
	light beacon to <i>Fl.G.3s</i>	20° 34'.88 S	116° 45'.42 E
	light beacon to <i>Fl.G.3s</i>	20° 35'.08 S	116° 45'.45 E

116* AUSTRALIA - WESTERN AUSTRALIA - Flinders Bay - Infrastructure

Department of Transport WA (AA701397)

Aus 116 (plan, Flinders Bay) [1002/2013]

Insert	accompanying block	34° 20'.5 S	115° 11'.0 E
--------	--------------------	-------------	--------------

117* AUSTRALIA - WESTERN AUSTRALIA - Glomar Shoal - Light buoy westwards

MetOcean Engineers (AA716119)

Aus 741 [1088/2013]

Move	light buoy	19° 34'.6 S	116° 28'.9 E
	to	19° 33'.66 S	116° 29'.55 E

118* AUSTRALIA - WESTERN AUSTRALIA - Rankin Bank to Exmouth Plateau - Light buoy northeastwards

MetOcean Engineers (AA716119)

Aus 327 [43/2014]

Delete	light buoy	18° 43'.0 S	115° 59'.0 E
--------	------------	-------------	--------------

Aus 329 [583/2013]

Delete	light buoy	20° 37'.4 S	112° 33'.7 E
--------	------------	-------------	--------------

119* AUSTRALIA - WESTERN AUSTRALIA - Success Bank - Depth
Fremantle Ports (DHDB 2566728)

Aus 117 [1052/2013]			
Insert	depth, 1 ₈ m, enclosed by contour	32° 04'.997 S	115° 42'.917 E
Aus 334 [449/2013]			
Insert	depth, 1 ₈ m, enclosed by contour	32° 05'.00 S	115° 42'.92 E
Aus 754 [1052/2013]			
Insert	depth, 1 ₈ m, enclosed by contour	32° 05'.00 S	115° 42'.92 E
Delete	depth, 4 ₁ m	32° 04'.9 S	115° 42'.9 E
AX 00117T [1052/2013]			
Insert	depth, 1 ₈ m, enclosed by contour	32° 04'.997 S	115° 42'.917 E
AX 00334S [449/2013]			
Insert	depth, 1 ₈ m, enclosed by contour	32° 05'.00 S	115° 42'.92 E
AX 00754S [1052/2013]			
Insert	depth, 1 ₈ m, enclosed by contour	32° 05'.00 S	115° 42'.92 E
Delete	depth, 4 ₁ m	32° 04'.9 S	115° 42'.9 E
AXA 0754S [1052/2013]			
Insert	depth, 1 ₈ m, enclosed by contour	32° 05'.00 S	115° 42'.92 E
Delete	depth, 4 ₁ m	32° 04'.9 S	115° 42'.9 E

120* AUSTRALIA - WESTERN AUSTRALIA - Tantabiddi - Light buoy
Department of Transport WA (AA429469)

Aus 745 [583/2013]			
Amend	light buoy to <i>Fl.R.3s</i>	21° 53'.4 S	113° 58'.3 E

121* AUSTRALIA - WESTERN AUSTRALIA - Thevenard Island - Light buoys
MetOcean Engineers (AA716119)

Aus 64 [1206/2013]			
Insert	special pillar light buoy, Q(5)Y.20s, without topmark	21° 22'.07 S	114° 50'.93 E
Aus 743 [43/2014]			
Insert	special pillar light buoy, Q(5)Y.20s, without topmark	21° 39'.29 S	115° 00'.07 E
	special pillar light buoy, Q(5)Y.20s, without topmark	21° 22'.07 S	114° 50'.93 E
Aus 744 [583/2013]			
Insert	special pillar light buoy, Q(5)Y.20s, without topmark	21° 22'.07 S	114° 50'.93 E

122* AUSTRALIA - SOUTH AUSTRALIA - Cape Jaffa - Infrastructure
Cape Jaffa Group (AA698660)

Aus 127 (plan, Port Caroline to Robe) [194/2013]			
Insert	accompanying block A	36° 56'.5 S	139° 47'.0 E
	accompanying block B	37° 02'.0 S	139° 48'.5 E

123* AUSTRALIA - SOUTH AUSTRALIA - Investigator Strait - Deep water route

Australian Hydrographic Service (AA715447)

Aus 343 [585/2013]

Delete	deep water route with legend, DW, between	35° 30'.4 S	136° 53'.0 E
		35° 29'.1 S	137° 02'.0 E

AX 00343S [585/2013]

Delete	deep water route with legend, DW, between	35° 30'.4 S	136° 53'.0 E
		35° 29'.1 S	137° 02'.0 E

124* AUSTRALIA - VICTORIA - Port Phillip - Mount Martha to Edithvale - Beacons; buoys

Victorian Notices 8/2014, 20/2014 (AA716809, AA717684), Parks Victoria (AA717940)

Aus 143 [45/2014]

Insert	special beacon, with topmark	38° 15'.80 S	145° 00'.77 E
	special beacon, with topmark	38° 16'.06 S	145° 00'.47 E
	west cardinal beacon, with topmark	38° 13'.42 S	145° 01'.58 E
	special beacon, with topmark	38° 12'.61 S	145° 02'.72 E
	special beacon, with topmark	38° 06'.05 S	145° 07'.32 E
	special beacon, with topmark	38° 02'.43 S	145° 06'.29 E

Delete	isolated danger beacon	38° 13'.4 S	145° 01'.5 E
--------	------------------------	-------------	--------------

Aus 143 (plan, Mornington) [45/2014]

Insert	special beacon, with topmark	38° 12'.679 S	145° 02'.617 E
	special beacon, with topmark	38° 12'.713 S	145° 02'.510 E
	special beacon, with topmark	38° 12'.750 S	145° 02'.345 E

Delete	buoy	38° 12'.72 S	145° 02'.62 E
	buoy	38° 12'.76 S	145° 02'.21 E
	buoy	38° 12'.68 S	145° 02'.16 E

Aus 155 [46/2014]

Insert	special beacon, with topmark	38° 02'.432 S	145° 06'.290 E
	special beacon, with topmark	38° 02'.328 S	145° 06'.245 E

Delete	depth, 1 ₆ m	38° 02'.30 S	145° 06'.24 E
--------	-------------------------	--------------	---------------

125* AUSTRALIA - BASS STRAIT - North East Isle - Light

UKHO (AA713700)

Aus 802 [NC 26/7/2013]

Amend	light range to 16M	39° 26'.6 S	147° 22'.7 E
-------	--------------------	-------------	--------------

126* AUSTRALIA - TASMANIA - Barnes Bay - Duckpond - Beacon

Marine and Safety Tasmania Notice M142/2013 (AA717877, AA717913)

Aus 173 [1004/2013]

Insert	orange beacon, without topmark	43° 08'.10 S	147° 21'.38 E
--------	--------------------------------	--------------	---------------

127* AUSTRALIA - TASMANIA - Beagle Rock - Depths

Australian Hydrographic Service (AA716159)

Aus 800 [1092/2013]

Insert	depth, 30 ₇ m	39° 37'.43 S	147° 40'.32 E
--------	--------------------------	--------------	---------------

Delete	depth, 30 ₅ m	39° 37'.2 S	147° 40'.2 E
--------	--------------------------	-------------	--------------

128* **AUSTRALIA - TASMANIA - Maria Island - Darlington Bay - Light**
Marine and Safety Tasmania (AA695326)

Aus 170 [859/2013]

Amend light range to 3M

42° 34'.69 S 148° 03'.74 E

129(T)/2014 AUSTRALIA - QUEENSLAND - Cairns - Trinity Inlet - Wreck
 Maritime Safety Queensland Notice 20(T)/2014 (AA717934)

A stranded wreck, marked by a special buoy, exists in position 16° 55'.64 S 145° 47'.10 E.

Mariners are advised to navigate with caution in the area.

Chart temporarily affected - Aus 263

130(T)/2014 AUSTRALIA - QUEENSLAND - Gladstone - Harbour works

Date - Until 25 August 2014

Maritime Safety Queensland Notice 46(T)/2014 (AA718636)

Harbour works associated with the construction of a tug base are in progress in an area bounded by the following:

<i>Position</i>	<i>Remarks</i>
23° 49'.59 S 151° 14'.69 E	
23° 49'.53 S 151° 14'.74 E	marked by special spar buoy
23° 49'.41 S 151° 14'.63 E	marked by special spar buoy
23° 49'.43 S 151° 14'.55 E	marked by special spar buoy
23° 49'.46 S 151° 14'.53 E.	

The vessels *Bambra*, *Babinda*, *Steel Trader*, *Okishin* and *Simone Jane* are on site and will monitor VHF Ch 13, Ch 15 and Ch 16.

Mariners are advised to navigate with caution in the area.

Chart temporarily affected - Aus 244 - Aus 245 - Aus 819

131(T)/2014 AUSTRALIA - QUEENSLAND - Gladstone - South Channel - Wild Cattle Cutting - Light beacon destroyed

Maritime Safety Queensland Notice 43(T)/2014 (AA718631)

S1 light beacon, *Fl.G.2s* (23° 53'.92 S 151° 30'.40 E), has been destroyed.

Mariners are advised to navigate with caution in the area.

Chart temporarily affected - Aus 246 - Aus 819

132(T)/2014 AUSTRALIA - QUEENSLAND - Hull River - Light relit

Former Notice - 975(T)/2013 is cancelled

Maritime Safety Queensland (AA718788)

Cancel this notice on receipt.

Chart formerly affected - Aus 258 - Aus 828 - Aus 829

133(T)/2014 AUSTRALIA - QUEENSLAND - Mooloolaba - Shoaling

Former Notice - 1218(T)/2013 is cancelled

Maritime Safety Queensland Notice 41(T)/2014 (AA718639)

A least depth of 2.5m exists within the main channel to Mooloolah River.

A least depth of 2.2m exists midway between light beacons No1 (26° 40'.81 S 153° 07'.94 E) and No3 (26° 40'.86 S 153° 08'.01 E).

Mariners are advised to navigate with caution in the area.

Chart temporarily affected - Aus 235

134(T)/2014 AUSTRALIA - QUEENSLAND - Moreton Bay - Brisbane River - Depth information

Former Notice - 62(T)/2014 is cancelled
Brisbane Port Corporation (AA718351)

Available depths and under keel clearances (UKC) at 24 January 2014:

<i>Berth</i>	<i>Metres</i>	<i>Remarks</i>
Fisherman Islands No12	13.9	
Fisherman Islands No11	13.8	
Fisherman Islands No10	13.9	
Fisherman Islands No9	13.9	
Fisherman Islands No8	13.8	
* Fisherman Islands No7	14.0	
* Fisherman Islands No6	14.1	
* Fisherman Islands No5	13.7	
* Fisherman Islands No4	13.5	
Fisherman Islands No3	13.3	
Fisherman Islands No2	13.8	
Fisherman Islands No1	13.8	
Fisherman Islands Grain and Woodchip	12.9	
Caltex Fisherman Islands	14.5	
* Fisherman Islands Coal	13.7	
Fisherman Islands General Purpose	11.2	
* BP Luggage Point	13.7	
Caltex Products	10.1	
* Cement Australia Co Wharf	9.0	
* BP Products	10.2	
* Shell	10.9	
Pacific Terminals	10.9	
Incitec North	10.1	
Incitec South	10.2	
* Pinkenba 1	10.3	
* Pinkenba 2	10.3	
Riverside Marina	-	
Sugar Terminal	9.8	
Cairncross Fitting Out Wharf	7.2	
Cairncross Breasting Wharf	4.9	
Brisbane Naval Wharf	4.3	
* Maritime No1	8.7	
* Hamilton No4	10.1	
Hamilton No1	8.4	
Brisbane Cruise Ship Terminal	8.7	
	<i>Metres</i>	<i>UKC/Remarks</i>
<i>Moreton Bay:</i>		
North West Channel	15.0	2.3 (280m width)
North West Bypass Channel	9.2	1.6
Spitfire Channel	15.0	1.5 (600m width)
East Knoll Bypass Channel	6.0	1.4
East Channel	15.0	1.5 (300m width from western side)
Main Channel (M8 - M9)	10.0	1.8
Entrance Channel (E5 - EBCN)	14.7	1.5
<i>Brisbane River:</i>		
Outer Bar Cutting	13.8	1.46
* Inner Bar Cutting	13.6	1.46
* Fisherman Islands Swing Basin	13.5	1.3
* River	9.1	0.6 / 0.9 (draft/tide)
Cement Australia Swing Basin	9.1	0.6 / 0.9 (draft/tide)
* Pinkenba Swing Basin	9.1	0.6 / 0.9 (draft/tide)
Hamilton Swing Basin	8.9	0.6 / 0.9 (draft/tide)
* Indicates new or revised entry.		

Chart temporarily affected - Aus 235 - Aus 236 - Aus 237 - Aus 238 - Aus 814 - Aus 815

135(T)/2014 AUSTRALIA - QUEENSLAND - The Broadwater - South Channel - Dredging operations completed

Former Notice - 510(T)/2013 is cancelled
Maritime Safety Queensland (AA718867)

Cancel this notice on receipt.

Chart formerly affected - Aus 230**136(T)/2014 AUSTRALIA - QUEENSLAND - Townsville - Ross Creek - Light buoy charted**

Former Notice - 1133(T)/2009 is cancelled
Maritime Safety Queensland (AA718271)

Cancel this notice on receipt.

Chart formerly affected - Aus 257**137(T)/2014 AUSTRALIA - WESTERN AUSTRALIA - Dampier - Depth information**

Former Notice - 1066(T)/2013 is cancelled
Dampier Port Authority Notice 5/2014 (AA717652)

Available depths as at 16 January 2014:

	<i>Metres</i>	<i>Remarks</i>
East Intercourse Island	19.1	
East Intercourse Island Layby berth	19.4	
East Intercourse Island Departure Channel	15.5	
* Rio Tinto Deep Water Channel	15.5	
Parker Point berth 2	18.7	
Parker Point berth 3	18.8	
Parker Point berth 4	19.5	
Parker Point berth 5	19.1	
* Parker Point Departure Channel	15.4	
Parker Point Approach Channel	8.0	
Fuel Wharf	11.4	
Service Wharf	6.7	
Mermaid Marine Supply Base Outer Channel	5.4	
Mermaid Marine Supply Base Inner Channel	3.0	
Berthing pocket	7.2	
Burrup Materials Facility	7.0	
Dampier Cargo Wharf	9.0	Western side
	6.5	Eastern side
Bulk Liquids Berth	12.4	
Facilities Channel	11.0	
* Indicates new or revised entry.		

Chart temporarily affected - Aus 58 - Aus 59 - Aus 60**138(T)/2014 AUSTRALIA - WESTERN AUSTRALIA - Dampier Archipelago - Pipeline northwestwards**

Former Notice - 82(T)/2014 is cancelled
Technip (AA712427, AA718859)

Vessel *Global 1201* and support vessels *Mermaid Vantage* and *Go Sirius* are conducting pipe lay operations between the following positions:

19° 39'.14 S 115° 55'.77 E
19° 42'.42 S 115° 52'.52 E
19° 45'.65 S 115° 53'.43 E.

Anchors marked by displaced surface buoys exist as follows:

<i>Anchors</i>	<i>Buoys</i>
19° 42'.72 S 115° 52'.19 E	19° 42'.47 S 115° 52'.25 E
19° 41'.99 S 115° 52'.40 E	19° 42'.17 S 115° 52'.21 E

Mariners are advised to navigate with caution in the area.

Chart temporarily affected - Aus 327 - Aus 4723 (INT 723) - AX 04723U

139(T)/2014 AUSTRALIA - WESTERN AUSTRALIA - Exmouth Plateau - Drill rig*Date* - Until 27 February 2014MODU *Ocean America* (AA717901), Australian Maritime Safety Authority Auscoast Warning 17/2014 (AA717902)Drill rig *Ocean America* is conducting drilling operations in position 20° 05'.46 S 112° 53'.20 E.**Chart temporarily affected - Aus 329 - Aus 4723 (INT 723) - AX 04723U****140(T)/2014 AUSTRALIA - WESTERN AUSTRALIA - Exmouth Plateau - Drill rig moved***Former Notice* - 1287(T)/2013 is cancelledMODU *Ocean America* (AA717805)

Cancel this notice on receipt.

Chart formerly affected - Aus 329 - Aus 4723 (INT 723) - Aus 4725 (INT 725) - AX 04723U**141(T)/2014 AUSTRALIA - WESTERN AUSTRALIA - Flinders Bay - Harbour works***Former Notice* - 1107(T)/2012 is cancelled*Date* - Until 30 September 2014

Department of Transport WA Notice 26/2014 (AA718868)

Harbour works are in progress within an exclusion zone bounded by the following:

<i>Positions</i>	<i>Remarks</i>
34° 20'.98 S 115° 10'.09 E	
34° 21'.00 S 115° 10'.30 E	marked by special light buoy, Q.Y
34° 21'.46 S 115° 10'.13 E	marked by special light buoy, Q.Y
34° 21'.41 S 115° 09'.96 E.	

All hazards to navigation will display appropriate lights and shapes.

Mariners are advised to navigate with caution in the area.

Chart temporarily affected - Aus 116**142(T)/2014 AUSTRALIA - WESTERN AUSTRALIA - Montebello Islands - Drill rig northwestwards***Date* - Until 28 April 2014MODU *Atwood Eagle* (AA718792), Australian Maritime Safety Authority Auscoast Warning 23/2014 (AA718792)Drill rig *Atwood Eagle* is conducting drilling operations in position 20° 04'.15 S 115° 09'.69 E.**Chart temporarily affected - Aus 328 - Aus 742 - Aus 4723 (INT 723) - AX 04723U****143(T)/2014 AUSTRALIA - WESTERN AUSTRALIA - Rankin Bank - Drill rig eastwards moved***Former Notice* - 932(T)/2013 is cancelledMODU *Atwood Eagle* (AA718578)

Cancel this notice on receipt.

Chart formerly affected - Aus 327 - Aus 4723 (INT 723) - AX 04723U**144(T)/2014 AUSTRALIA - WESTERN AUSTRALIA - Rankin Bank to Exmouth Plateau - Scientific instruments***Date* - Until 31 July 2015

MetOcean Engineers (AA716119)

Subsurface scientific instruments exist in positions 18° 43'.00 S 115° 59'.00 E and 20° 37'.42 S 112° 33'.66 E.

Chart temporarily affected - Aus 327 - Aus 328 - Aus 329 - Aus 4603 (INT 603) - AX 04603U

145(T)/2014 AUSTRALIA - WESTERN AUSTRALIA - Rosemary Island - Scientific instruments

Former Notice - 1229(T)/2013 is cancelled
Department of Transport WA Notice 9/2014 (AA715870)

Note: NTM 89/2014 refers.

Cancel this notice on receipt.

Chart formerly affected - Aus 57 - Aus 741 - Aus 742

146(T)/2014 AUSTRALIA - WESTERN AUSTRALIA - Thevenard Island - Scientific instruments charted

Former Notice - 837(T)/2013 is cancelled
MetOcean Engineers (AA716119)

Cancel this notice on receipt.

Chart formerly affected - Aus 64 - Aus 328 - Aus 743 - Aus 744

147(T)/2014 AUSTRALIA - VICTORIA - Port Phillip - Great Ship Channel - AIS trial

Date - Until 31 July 2014

Victorian Notice 26(T)/2014 (AA718268), Port of Melbourne Corporation (AA718270)

Virtual AIS exist as follows:

<i>MMSI</i>	<i>Position</i>	<i>Remarks</i>
995036085	38° 18'.43 S 144° 37'.12 E	GSC1 port lateral buoy
995036086	38° 18'.05 S 144° 37'.56 E	GSC2 port lateral buoy
995036087	38° 17'.83 S 144° 37'.69 E	GSC3 port lateral buoy
995036088	38° 17'.91 S 144° 37'.96 E	GSC4 starboard lateral buoy
995036089	38° 18'.48 S 144° 37'.28 E	GSC5 starboard lateral buoy

Chart temporarily affected - Aus 143 - Aus 144 - Aus 158

148(T)/2014 AUSTRALIA - TASMANIA - Franklin Sound - Lady Barron to Apple Orchard Point - Lights unreliable

Former Notice - 1292(T)/2011 is cancelled

Marine and Safety Tasmania Notices M144/2011, M20/2014 (AA569730, AA718804)

The following lights are unreliable:

<i>Position</i>	<i>Remarks</i>
40° 12'.45 S 148° 14.76 E	F.WRG.48m 10M
40° 14'.80 S 148° 15.78 E	F.WRG.8m 6M
40° 16'.24 S 148° 17.32 E	F.WRG.7/5M
40° 19'.05 S 148° 12.54 E	F.WRG.20m 6/4M

Chart temporarily affected - Aus 179 - Aus 798 - Aus 800

149(T)/2014 AUSTRALIA - TASMANIA - Hobart - Wrest Point - Beacon destroyed

Marine and Safety Tasmania Notice M14/2014 (AA717937)

The port lateral beacon (42° 54'.13 S 147° 20'.34 E) has been destroyed.

Mariners are advised to navigate with caution in the area.

Chart temporarily affected - Aus 172

150(T)/2014 AUSTRALIA - TASMANIA - River Tamar - Kings Wharf - Dredging operations

Date - Until 19 February 2014

Marine and Safety Tasmania Notice M19/2014 (AA718747)

The dredge *Milimili* is conducting dredging operations adjacent to Kings Wharf (41° 25'.73 S 147° 07'.44 E).

A pipeline marked by special buoys and red lights exists on the eastern side of the channel.

Mariners are advised to navigate with caution in the area.

Chart temporarily affected - Aus 168

HYDROGRAPHIC REPORTS

Nil Reports

NAVIGATION WARNINGS

The following radio messages have been received during the period to 30 January 2014. Signal copies of these messages may be destroyed. It is recommended that the reprint of Navigational Warnings should be kept in a file or a book divided into areas. Cancellation should be made on receipt of signals and reprints.

Rigs on location other than those listed in the latest Section III summary are the subject of Radio Navigational Warnings. Rigs in transit will not be the subject of Warnings.

AUSCOAST WARNING

- 015 Port Walcott C1 buoy in position 20° 23'.22 S 117° 25'.59 E off station.
- 016 Port Hedland E2 spar light buoy K1675.8 in position 20° 03'.06 S 118° 32'.81 E altered in position fixed white range 7M.
- 017 Drill rig *Ocean America* in position 20° 05'.46 S 112° 53'.20 E. 2.5M clearance requested.
- 018 Underwater oceanographic equipment considered hazardous to surface navigation deployed in position 10° 26'.98 S 142° 20'.69 E. 500m clearance requested.
- 019 Underwater oceanographic equipment considered hazardous to surface navigation deployed in position 10° 29'.01 S 142° 21'.06 E. 500m clearance requested.
- 020 Special purpose vessel *Polar Duchess* conducting seismic survey towing 12 cables of 8000m in length in an area bounded by 34° 14'.6 S to 35° 43'.3 S and 131° 37'.3 E to 133° 28'.2 E. 7M clearance requested.
- 021 Special purpose vessel *Boa Thalassa* conducting seismic survey in an area bounded by 20° 30'.0 S to 20° 52'.0 S and 114° 54'.0 E to 115° 04'.0 E. 2.5M clearance requested.
- 022 Cancelled.
- 023 Drill rig *Atwood Eagle* in position 20° 04'.2 S 115° 09'.7 E. 2.5M clearance requested.
- 024 Howick Island light K3220 in position 14° 29'.52 S 144° 58'.66 E unreliable.

NAVAREA X WARNINGS

- 003 Cancelled.
- 004 Cancelled.

Navigational warnings in force as at 300001UTC JAN 14.

Auscoast

- 2013 099 134 237 257 263 264 270 289 295 296
- 2014 003 007 012 014 015 016 017 018 019 020 021

Navarea X

- 2014 Nil

Summary of mobile drilling rigs as at 300001UTC JAN 14.

<i>Name</i>	<i>Position</i>
Ensco 109	12° 40'.30 S 124° 32'.30 E
Noble Clyde Boudreaux	13° 49'.00 S 123° 19'.35 E
Transocean Legend	13° 19'.00 S 122° 16'.45 E
Atwood Osprey	19° 54'.35 S 115° 16'.12 E
Atwood Eagle	20° 04'.20 S 115° 09'.70 E
Deepwater Frontier	19° 47'.55 S 114° 38'.95 E
Atwood Falcon	21° 21'.00 S 114° 04'.65 E
Nan Hai 6	21° 32'.02 S 114° 09'.10 E
Jack Bates	21° 19'.22 S 113° 52'.04 E
Ocean America	20° 05'.46 S 112° 53'.20 E

NAVAREA XIV WARNINGS

- 001 Cancelled.
- 002 Cancelled.
- 003 South Pacific Ocean, Tonga. Due to cyclone Ian aftermath aids to navigation may be unreliable. Mariners are advised to navigate with caution in coastal waters and approaches to harbours.

Navarea XIV warnings in force as at 300001UTC JAN 14.

- 2013 098
- 2014 003

11.11.4 Warnings

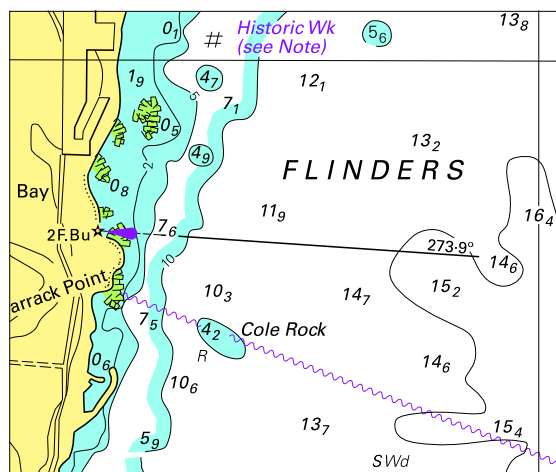
1. A warning will be issued as a Navigational Warning and will:
 - give details of the area
 - state the reason for the warning
 - describe the ADF's involvement.
2. Vessels seeking protection are to send a Passage Intentions Report to the ADF. The Message Format is based upon the IMO Standard Ship Reporting format. Further details can be found in Admiralty List of Radio Signals Volume 6 and Chapter 10.
3. Masters must note that contacting the ADF does not replace the requirement to report to MASTREP as normal.

Page 202

Brisbane, QLD (27° 23'S, 153° 09'E)	
UN/LOCODE: AU BNE	
Charts:	Aus 236, 237, 238
Security Regulated Port:	Yes
Port Authority:	Port of Brisbane Pty Ltd
Website:	www.portbris.com.au
email:	info@portbris.com.au
Telephone:	+61 7 3258 4888
Vessel Traffic Service:	Call Brisbane VTS
Telephone:	+61 7 33051700
email:	vtso.1@msq.qld.gov.au vtso.2@msq.qld.gov.au
Pilotage:	Compulsory
Pilot:	Brisbane Marine Pilots
Telephone:	+61 7 3862 2260
Fax:	+61 7 3862 6499
email:	operations@brisbanepilots.com.au
Ordering:	via agent 48 hours in advance
Pilot Boarding Ground:	26°42.90'S, 153°10.68'E
Communication:	"Brisbane VTS"
Call up, emergencies:	VHF Ch 16
Port Operations:	VHF Ch 12
Small Craft:	VHF Ch 67
Pilots and Tugs:	VHF Ch 6, 8, 9, 10
Water Police and Coast Guard:	VHF 63, 73
Notice of ETA:	48 hours and 24 hours prior to arrival
ETD:	1 Hour
For more information see Port Handbook:	www.portbris.com.au/ ShippingOperations/PortHandbook

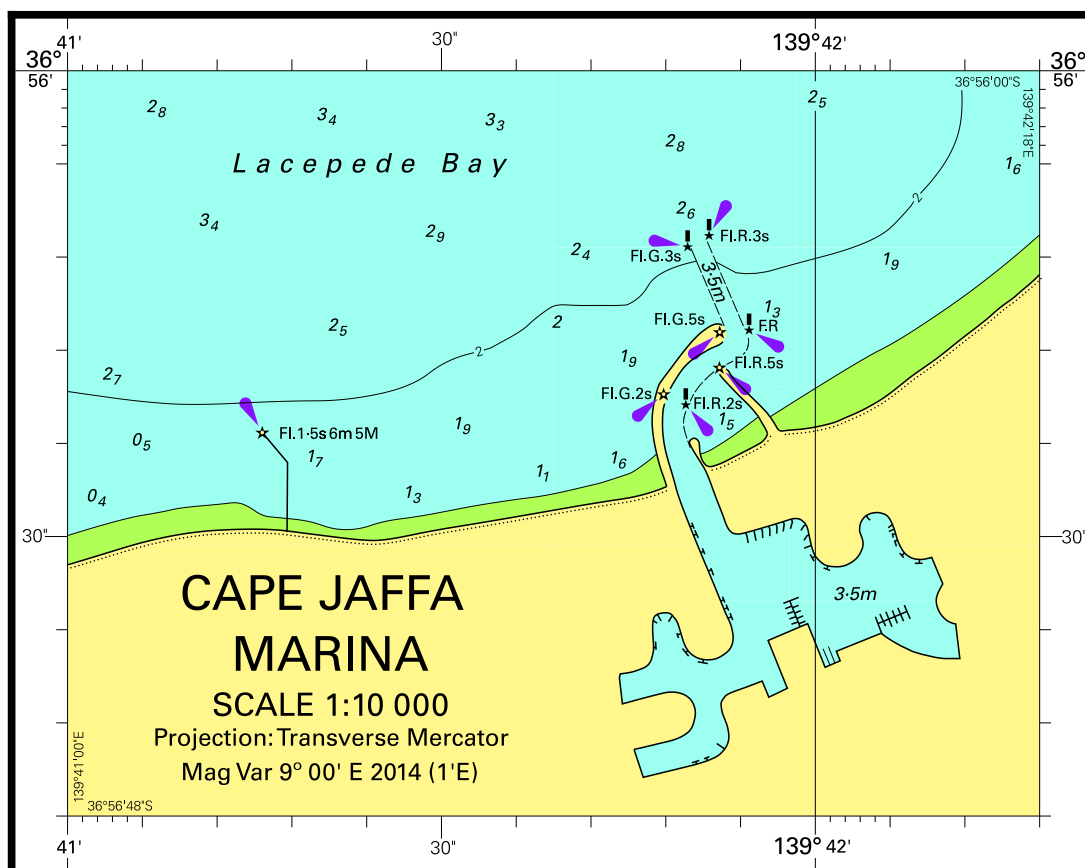
Page 210

To accompany Australian Notice to Mariners 116/2014



© Commonwealth of Australia 2014
 Block for chart Aus 116 (73.3 x 61.5mm)

To accompany Australian Notice to Mariners 122/2014



Block B for chart Aus 127

© Commonwealth of Australia 2014