



19 December 2014

Edition 25

Australian Notices to Mariners are the authority for correcting Australian Charts and Publications

AUSTRALIAN NOTICES TO MARINERS

Notices 1206 - 1251



*The Hydrographer and Staff of the Australian Hydrographic Service
wish all users of Australian Navigational Products a Merry Christmas,
a Happy New Year and safe, successful voyages in 2015.*



Published fortnightly by the Australian Hydrographic Service

Commodore B.K. BRACE RAN
Hydrographer of Australia

SECTIONS.

- I. **Australian Notices to Mariners, including blocks and notes.**
- II. **Hydrographic Reports.**
- III. **Navigational Warnings.**

SUPPLEMENTS.

- I. **Tracings**
- II. **Cumulative List of Australian Notices to Mariners.**
- III. **Cumulative List of Temporary and Preliminary Australian Notices to Mariners.**
- IV. **Temporary and Preliminary Notices in force.**
- V. **Amendments to Admiralty List of Lights and Fog Signals (Vol K),
Radio Signals (NP 281(2), 282, 283(2), 285, 286(4)) and Sailing
Directions (NP 9, 13, 14, 15, 33, 34, 35, 36, 39, 44, 51, 60, 61, 62, 100, 136).**

© Commonwealth of Australia 2014

This work is copyright. Apart from any use permitted under the Copyright Act 1968, no part may be reproduced by any process, adapted, communicated or commercially exploited without prior written permission from The Commonwealth represented by the Australian Hydrographic Service.

IMPORTANT NOTICE

This edition of Notices to Mariners includes all significant information affecting AHS products which the AHS has become aware of since the last edition. All reasonable efforts have been made to ensure the accuracy and completeness of the information, including third party information, on which these updates are based. The AHS regards third parties from which it receives information as reliable, however the AHS cannot verify all such information and errors may therefore exist. The AHS does not accept liability for errors in third party information.

GENERAL INSTRUCTIONS

The substance of these notices should be inserted on the charts affected.

Bearings are referred to the true compass and are reckoned clockwise from North; those relating to lights are given as seen by an observer from seaward. Positions quoted in permanent notices relate to the horizontal datum for the chart(s). When preliminary or temporary notices affect multiple charts, positions will be provided in relation to only one horizontal datum and that datum will be specified. When the multiple charts do not have a common horizontal datum, mariners will be required to adjust the position(s) for those charts not on the specified datum. The range quoted for a light is its nominal range. Depths are with reference to the chart datum of each chart. Heights are above mean high water springs or mean higher high water, as appropriate.

The capital letter (P) or (T) after the number of any notice denotes a preliminary or temporary notice respectively, which are contained separately at the end of the permanent notices. A star (*) adjacent to the number of a notice indicates that the notice is based on original information.

REPORTING OF DANGERS

Mariners are particularly requested to notify the AUSTRALIAN HYDROGRAPHIC SERVICE, Locked Bag 8801 Wollongong, NSW 2500 (Fax 02-4223 6599, e-mail Hydro.NTM@defence.gov.au or, alternatively by filling in and submitting the [Hydrographic Notes](#) forms located on the web site – www.hydro.gov.au), immediately on the discovery of new dangers or suspected dangers to navigation. For changes or defects in aids to navigation notify AusSAR (Fax 02-6230 6868 or email rccaus@amsa.gov.au).

AUTHORISED USE

Copies of Australian notices are available free of charge from the Australian Hydrographic Service (AHS) website (www.hydro.gov.au) and through the eNotices (email) service (www.hydro.gov.au/enotices/enotices.htm).

Individual Notices may be copied for the purpose of inserting Notice substance on official charts and publications. Paper copies may be printed by chart agents and distributed to customers on a cost recovery basis. Participating chart agents are listed on the AHS website as providing a 'Paper Notices to Mariners' service (www.hydro.gov.au/prodserv/distributors/distributors.htm). Copies of the notices may not be sold for profit without prior written agreement.

NUMERICAL INDEX OF NOTICES TO MARINERS

Edition No 25

Notices	Aus Chart, INT Chart, ENC Cell, AHP, BA Pubs
1206	Aus 66, 158, 244, 292, 776, AX 00367S
1207	Amendment to Australian National Tide Tables 2015
1208	Aus 807
1209	Aus 221, 812
1210	Aus 242
1211	Aus 242
1212	Aus 258, 829
1213	Aus 249, 367, 821, 823, 824, AX 00249S, 00823S
1214	Aus 816
1215	Aus 241, 817
1216	Aus 250
1217	Aus 836
1218	Aus 292, 293, 700, 841
1219	Aus 292, 293
1220	Aus 367, 490, 4621, 4635, INT 621, 635, AX 00367S, 04621U
1221	Aus 4, 301, 701
1222	Aus 4
1223	Aus 621, 622
1224	Aus 719
1225	Aus 116, 756, 757
1226	Aus 334, 754, AX 00334S, 00754S, AXA 0754S
1227	Aus 755, 756, AX 00755S
1228	Aus 127
1229	Aus 143, 144
1230	Aus 179
1231(T)	Aus 207, 208
1232(T)	Aus 245, 272
1233(T)	Aus 245, 272, 819
1234(T)	Aus 249, 250, AX 00249S
1235(T)	Aus 235, 236, 237, 814, 815
1236(T)	Aus 235, 236, 237, 238, 814, 815
1237(T)	Aus 268
1238(T)	Aus 367, 490, 4621, 4635, INT 621, 635, AX 04621U
1239(T)	Aus 646
1240(T)	Aus 24, 26, 27, 29, 309, 316, 722, AX 00026T, 00309T, 00309U, 00722T
1241(T)	Aus 62, 66
1242(T)	Aus 328, 4723, 4725, INT 723, 725, AX 04723U
1243(T)	Aus 329, 4723, INT 723, AX 04723U
1244(T)	Aus 328, 329, 744
1245(T)	Aus 332, 333, 752, 753
1246(T)	Aus 347
1247(T)	Aus 141, 349, 487, 787, 789
1248(T)	Aus 154
1249(T)	Aus 153, 157
1250(T)	Aus 154
1251(T)	Aus 169

NUMERICAL INDEX OF CHARTS AFFECTED

Edition No 25

Aus Chart	Notices
Aus 4	1221, 1222
Aus 24	1240(T)
Aus 26	1240(T)
Aus 27	1240(T)
Aus 29	1240(T)
Aus 62	1241(T)
Aus 66	1206, 1241(T)
Aus 116	1225
Aus 127	1228
Aus 141	1247(T)
Aus 143	1229
Aus 144	1229
Aus 153	1249(T)
Aus 154	1248(T), 1250(T)
Aus 157	1249(T)
Aus 158	1206
Aus 169	1251(T)
Aus 179	1230
Aus 207	1231(T)
Aus 208	1231(T)
Aus 221	1209
Aus 235	1235(T), 1236(T)
Aus 236	1235(T), 1236(T)
Aus 237	1235(T), 1236(T)
Aus 238	1236(T)
Aus 241	1215
Aus 242	1210, 1211
Aus 244	1206
Aus 245	1232(T), 1233(T)
Aus 249	1213, 1234(T)
Aus 250	1216, 1234(T)
Aus 258	1212
Aus 268	1237(T)
Aus 272	1232(T), 1233(T)
Aus 292	1206, 1218, 1219
Aus 293	1218, 1219
Aus 301	1221
Aus 309	1240(T)
Aus 316	1240(T)
Aus 328	1242(T), 1244(T)
Aus 329	1243(T), 1244(T)
Aus 332	1245(T)
Aus 333	1245(T)
Aus 334	1226
Aus 347	1246(T)
Aus 349	1247(T)
Aus 367	1213, 1220, 1238(T)
Aus 487	1247(T)
Aus 490	1220, 1238(T)
Aus 621	1223
Aus 622	1223
Aus 646	1239(T)
Aus 700	1218
Aus 701	1221

Aus Chart	Notices
Aus 719	1224
Aus 722	1240(T)
Aus 744	1244(T)
Aus 752	1245(T)
Aus 753	1245(T)
Aus 754	1226
Aus 755	1227
Aus 756	1225, 1227
Aus 757	1225
Aus 776	1206
Aus 787	1247(T)
Aus 789	1247(T)
Aus 807	1208
Aus 812	1209
Aus 814	1235(T), 1236(T)
Aus 815	1235(T), 1236(T)
Aus 816	1214
Aus 817	1215
Aus 819	1233(T)
Aus 821	1213
Aus 823	1213
Aus 824	1213
Aus 829	1212
Aus 836	1217
Aus 841	1218
Aus 4621	1220, 1238(T)
Aus 4635	1220, 1238(T)
Aus 4723	1242(T), 1243(T)
Aus 4725	1242(T)
AX 00026T	1240(T)
AX 00249S	1213, 1234(T)
AX 00309T	1240(T)
AX 00309U	1240(T)
AX 00334S	1226
AX 00367S	1206, 1220
AX 00722T	1240(T)
AX 00754S	1226
AX 00755S	1227
AX 00823S	1213
AX 04621U	1220, 1238(T)
AX 04723U	1242(T), 1243(T)
AXA 0754S	1226

INT Chart	Notices
INT 621	1220, 1238(T)
INT 635	1220, 1238(T)
INT 723	1242(T), 1243(T)
INT 725	1242(T)

1206 AUSTRALIA - Products
Australian Hydrographic Service (AA780236)

New Edition

<i>Chart</i>	<i>Published</i>	<i>Title and description of amendments</i>	<i>Scale</i>	<i>Index Chart</i>	<i>Price</i>
Aus 158	19/12/2014	Australia - South Coast -Victoria – Port Phillip South and West Channels 38° 23'·24 S – 38° 10'·0 S 144° 31'·02 E – 144° 59'·70 E <i>New edition with general updating throughout; including latest surveys.</i>	1:25 000	Aus 5001	\$35.00

New Miscellaneous Edition

<i>Chart</i>	<i>Published</i>	<i>Title</i>	<i>Scale</i>	<i>Remarks</i>
AX00367S	19/12/2014	Swain Reefs to Penrith Island	1:300 000	Fleet use only

New edition to be published shortly

<i>Chart</i>	<i>Title</i>	<i>Scale</i>	<i>Expected Publication Date</i>
Aus244	Australia - East Coast - Queensland – Plans in Port of Gladstone	Various	18 January 2015
Aus 292	Australia – Torres Strait - Queensland – Adolphus Channel to Prince of Wales Channel	1:75 000	18 January 2015
Aus 776	Australia – South Coast – South Australia – Williams Island to Winceby Island	1:10 000	18 January 2015

Chart permanently withdrawn

<i>Chart</i>	<i>On publication of new edition</i>	<i>Remarks</i>
Aus 158	Aus 158	

For further details refer to the AHS website at www.hydro.gov.au for new edition and new chart stock arrival information.

When placing orders with a chart agent, mariners should advise whether their order pertains to the current edition or the new edition.

1207 AUSTRALIA - Product - Amendment to Australian National Tide Tables 2015
Australian Hydrographic Service (AA782079, AA782078)

ANTT 2015

Page xxx

Amend Barrow Island - Wapet Landing To Chart Datum AUS 742 NE 05 Dec 2014 0.0

Page xxxii

Amend Darwin To Chart Datum AUS 26 NE 21 Nov 2014 subtract 0.1

Page xxxiii

Amend Exmouth To Chart Datum AUS 744 NE 05 Dec 2014 0.0

Page xxxvi

Amend Onslow To Chart Datum AUS 328 NE 05 Dec 2014 0.0

Page xxxvii

Amend Port Walcott To Chart Datum AUS 741 NE 05 Dec 2014 0.0

Page xxxviii

Amend Thevenard Island To Chart Datum AUS 328 NE 05 Dec 2014 0.0

1208* AUSTRALIA - NEW SOUTH WALES - Narooma - Obstructions eastwards
University of New South Wales (AA779107)

Aus 807 [948/2014]

Insert	depth, 15m, enclosed by danger circle with legend, ODAS.	36° 11'.40 S	150° 11'.40 E
Move	obstruction to	36° 12'.89 S 36° 12'.50 S	150° 18'.48 E 150° 20'.00 E

1209* AUSTRALIA - NEW SOUTH WALES - South Solitary Island - Obstruction southeastwards
University of New South Wales (AA779107)

Aus 221 [949/2014]

Move	obstruction	30° 16'.06 S	153° 23'.78 E
	to	30° 15'.93 S	153° 23'.76 E

Aus 812 [949/2014]

Move	obstruction	30° 16'.06 S	153° 23'.78 E
	to	30° 15'.93 S	153° 23'.76 E

1210* AUSTRALIA - QUEENSLAND - Bundaberg - Burnett River - Lights
Maritime Safety Queensland Notice 700/14 (AA780195)

Aus 242 (plan, Port Bundaberg) [NE 17/1/2014]

Amend	light to <i>Iso.Bu.2s (F.Day)</i>	24° 45'.22 S	152° 24'.09 E
	light to <i>Q.Bu (F.Day) & Fl.G.4s No 15</i>	24° 45'.24 S	152° 24'.03 E
	light to <i>Iso.Bu.2s (F.Day)</i>	24° 45'.31 S	152° 23'.48 E
	light to <i>Q.Bu (F.Day) & Fl.G.4s No 17</i>	24° 45'.39 S	152° 23'.39 E
	light to <i>Q.Bu (F.Day) & Fl.G.4s No 19</i>	24° 45'.50 S	152° 23'.17 E
	light to <i>Iso.Bu.2s (F.Day)</i>	24° 45'.55 S	152° 22'.99 E
	light to <i>Iso.Bu.2s (F.Day)</i>	24° 45'.90 S	152° 22'.75 E
	light to <i>Q.Bu (F.Day) & Fl.G.4s No 21</i>	24° 45'.85 S	152° 22'.81 E
	light to <i>Q.R No 20</i>	24° 45'.75 S	152° 22'.99 E
	light to <i>Q.R No 18</i>	24° 45'.52 S	152° 23'.28 E
	light to <i>Q.R No 14</i>	24° 45'.30 S	152° 24'.15 E

1211* AUSTRALIA - QUEENSLAND - Burnett River - Millaquin Reach - Tide scale

Former Notice - 222(T)/2014 is cancelled
Maritime Safety Queensland Notice 115(T)/2014 (AA724789, AA766871)

Aus 242 (plan, Burnett River (Southern Section)) [1210/2014]

Insert	light beacon, <i>Fl.Y.2·5s</i> , with legend Tide Scale	24° 49'.737 S	152° 22'.382 E
--------	---	---------------	----------------

1212* AUSTRALIA - QUEENSLAND - Cowley beach - Depth
HMAS *Leeuwin* DHDB 2759292

Aus 258 (plan, Gladys Inlet to King Reefs) [1107/2014]

Insert	depth, <i>8₇m</i> , enclosed by contour	17° 41'.09 S	146° 09'.61 E
	depth, <i>9₇m</i> , and extend contour E to enclose	17° 41'.03 S	146° 09'.03 E
	depth, <i>2₃m</i> , and extend contour E to enclose	17° 40'.70 S	146° 07'.63 E
Delete	depth 10 ₄	17° 40'.9 S	146° 08'.9 E

Aus 829 [1107/2014]

Insert	depth, <i>8₇m</i> , enclosed by contour	17° 41'.09 S	146° 09'.61 E
	depth, <i>9₇m</i> , and extend contour E to enclose	17° 41'.03 S	146° 09'.03 E
	depth, <i>2₃m</i> , and extend contour E to enclose	17° 40'.70 S	146° 07'.63 E
Delete	depth 9 ₇	17° 41'.3 S	146° 08'.9 E

1213* AUSTRALIA - QUEENSLAND - Derwent Island - Depth
 Marcus Arthur (AA780413, AA781378)

Aus 249 [NE 18/7/2014]

Insert depth 14₅m enclosed by contour, with legend *Rep* (2014) 20° 58'.61 S 149° 44'.15 E

Delete depth 30₅m 20° 58'.5 S 149° 44'.2 E

Aus 367 [1112/2014]

Substitute depth 14₅m enclosed by contour, with legend *Rep* (2014), for depth 30₅m 20° 58'.5 S 149° 44'.2 E

Aus 821 [951/2014]

Insert depth 14₅m enclosed by contour, with legend *Rep* (2014) 20° 58'.61 S 149° 44'.15 E

Delete depth 30₅m 20° 58'.5 S 149° 44'.2 E

Aus 823 [1160/2014]

Insert depth 14₅m enclosed by contour, with legend *Rep* (2014) 20° 58'.61 S 149° 44'.15 E

Delete depth 30₅m 20° 58'.5 S 149° 44'.2 E

Aus 824 [1160/2014]

Insert depth 14₅m enclosed by contour, with legend *Rep* (2014) 20° 58'.61 S 149° 44'.15 E

Delete depth 30₅m 20° 58'.5 S 149° 44'.2 E

AX 00249S [560/2014]

Insert depth 14₅m enclosed by contour, with legend *Rep* (2014) 20° 58'.61 S 149° 44'.15 E

Delete depth 30₅m 20° 58'.5 S 149° 44'.2 E

AX 00823S [1160/2014]

Substitute depth 14₅m enclosed by contour, with legend *Rep* (2014), for depth 30₅m 20° 58'.5 S 149° 44'.2 E

1214* AUSTRALIA - QUEENSLAND - Gardner Bank - Depth
 CSIRO (DHDB 2152988)

Aus 816 [NE 1/8/2014]

Substitute depth 21m, for depth, 21₈m 25° 03'.2 S 153° 32'.2 E

1215* AUSTRALIA - QUEENSLAND - Great Sandy Strait - Light buoys
 Maritime Safety Queensland (AA781876), G Hitchens (AA782414)

Aus 241 [998/2014]

Delete	light buoy	25° 20'.2 S	153° 01'.4 E
	light buoy	25° 12'.7 S	152° 54'.7 E
	light buoy	25° 08'.9 S	152° 50'.5 E
	light buoy	25° 09'.1 S	152° 50'.5 E

Aus 817 [808/2014]

Delete light buoy 25° 12'.7 S 152° 54'.7 E

1216* AUSTRALIA - QUEENSLAND - Mackay - Depth
 Maritime Safety Queensland DHDB 2568525

Aus 250 (plan, Mackay Harbour) [560/2014]

Insert depth 3₇m and extend contour NW to enclose 21° 06'.114 S 149° 15'.004 E

Delete depth 4₄m 21° 06'.12 S 149° 15'.01 E

1217* AUSTRALIA - QUEENSLAND - Pandora Entrance - Historic wreck
 Australian Hydrographic Service (AA779762)

Aus 836 [949/2013]

Move	historic wreck	11° 22'.64 S	143° 58'.62 E
	to	11° 22'.33 S	143° 59'.28 E

1218* AUSTRALIA - QUEENSLAND - Prince of Wales Channel - Light beacon
 AMSA ATH 508/2014 (AA779954)

Aus 292 [1115/2014]

Amend	light range to 9M	10° 30'.3 S	142° 14'.6 E
-------	-------------------	-------------	--------------

Aus 293 [1115/2014]

Amend	light range to 9M	10° 30'.29 S	142° 14'.63 E
-------	-------------------	--------------	---------------

Aus 700 [1116/2014]

Amend	light range to 9M	10° 30'.3 S	142° 14'.6 E
-------	-------------------	-------------	--------------

Aus 841 [1115/2014]

Amend	light range to 9M	10° 30'.3 S	142° 14'.6 E
-------	-------------------	-------------	--------------

1219* AUSTRALIA - QUEENSLAND - Prince of Wales Channel - OG Rock - Virtual AIS

Former Notice - 1185(P)/2014 is cancelled
 Australian Maritime Safety Authority (AA781925)

Aus 292 [1218/2014]

Insert	out of position special virtual AIS	10° 29'.87 S	142° 20'.75 E
--------	-------------------------------------	--------------	---------------

Aus 293 [1218/2014]

Insert	out of position special virtual AIS	10° 29'.865 S	142° 20'.753 E
--------	-------------------------------------	---------------	----------------

1220* AUSTRALIA - QUEENSLAND - Swain Reefs - Hixson Cay - Light

Australian Maritime Safety Authority ATH 508/2014 (AA781928)

Aus 367 [1213/2014]

Amend	light to Fl.10s 19m 18M	22° 20'.0 S	152° 43'.8 E
-------	-------------------------	-------------	--------------

Aus 490 [1112/2014]

Amend	light to Fl.10s 19m 18M	22° 20'.0 S	152° 43'.8 E
-------	-------------------------	-------------	--------------

Aus 4621 (INT 621) [999/2014]

Amend	light to Fl.18M	22° 20'.0 S	152° 43'.8 E
-------	-----------------	-------------	--------------

Aus 4635 (INT 635) [999/2014]

Amend	light to Fl.18M	22° 20'.0 S	152° 43'.8 E
-------	-----------------	-------------	--------------

AX 00367S [NE 19/12/2014]

Amend	light to Fl.10s 19m 18M	22° 20'.0 S	152° 43'.8 E
-------	-------------------------	-------------	--------------

AX 04621U [999/2014]

Amend	light to Fl.18M	22° 20'.0 S	152° 43'.8 E
-------	-----------------	-------------	--------------

1221* AUSTRALIA - QUEENSLAND - Weipa - Depths

North Queensland Bulk Ports Corporation (DHDB 2730538)

Aus 4 [902/2014]

Insert	accompanying block	12° 39'.4 S	141° 39'.5 E
--------	--------------------	-------------	--------------

Aus 301 [1116/2014]

Insert	accompanying block	12° 40'.0 S	141° 35'.0 E
--------	--------------------	-------------	--------------

Aus 701 [1183/2012]

Insert	accompanying block	12° 40'.0 S	141° 41'.0 E
--------	--------------------	-------------	--------------

1222* AUSTRALIA - QUEENSLAND - Wepia - Wreck
Maritime Safety Queensland Notice 707/14 (AA781404)

Aus 4 (plan, Port of Weipa) [1221/2014]

Insert	depth 20 ₁ m enclosed by danger circle with legend WK	12° 40'.045 S	141° 50'.695 E
--------	--	---------------	----------------

1223* PAPUA NEW GUINEA - Port Moresby - Light
PNG NMSA Notice 35-14 (AA779480)

Aus 621 [39/2014]

Insert	light description Mo(U)R.10s	09° 27'.277 S	147° 08'.384 E
--------	------------------------------	---------------	----------------

Aus 622 [577/2013]

Insert	light description Mo(U)R.10s	09° 27'.277 S	147° 08'.384 E
--------	------------------------------	---------------	----------------

Aus 622 (plan, Port Moresby and Napa Napa Wharves) [577/2013]

Insert	light description Mo(U)R.10s	09° 27'.277 S	147° 08'.384 E
--------	------------------------------	---------------	----------------

1224* AUSTRALIA - NORTHERN TERRITORY - Arafura Sea - Hogmanay shoal - Depths
HMAS *Benalla* and HMAS *Shepparton* (AA780566)

Aus 719 [1066/2011]

Substitute	depth, 8 ₇ m, for depth, 9 ₂ m	10° 58'.0 S	133° 09'.1 E
	depth, 9 ₅ m for depth, 10m	10° 59'.3 S	133° 09'.3 E
	depth, 9 ₂ m for depth, 9 ₇ m	10° 59'.8 S	133° 09'.4 E
	depth, 28 ₈ m for depth, 29 ₃ m	11° 00'.0 S	133° 07'.7 E
	depth, 23 ₄ m for depth, 23 ₉ m	11° 02'.7 S	133° 06'.9 E

1225* AUSTRALIA - WESTERN AUSTRALIA - Flinders Bay - Lights, navline
Former Notice - 141(T)/2014 is cancelled
Department for Transport WA (AA779692, AA781522)

Aus 116 (plan, Flinders Bay) [326/2014]

Insert	light, FI(2)R.5s 5M	34° 21'.12 S	115° 10'.16 E
--------	---------------------	--------------	---------------

Delete	lights, 2F.Bu	34° 20'.6 S	115° 10'.1 E
	dashed and continuous line with legend 273·9°, emanating from	34° 20'.6 S	115° 10'.1 E

Aus 756 [405/2014]

Delete	lights, 2F.Bu	34° 20'.6 S	115° 10'.1 E
--------	---------------	-------------	--------------

Aus 757 [325/2014]

Delete	lights, 2F.Bu	34° 20'.6 S	115° 10'.1 E
--------	---------------	-------------	--------------

1226* AUSTRALIA - WESTERN AUSTRALIA - Rottnest Island - Light buoy; fish aggregating device westwards
Recfishwest (AA779562, AA781342)

Aus 334 [772/2014]

Insert	red cylindrical light buoy, <i>Fl. Y. 4s</i>	32° 03'.11 S	115° 13'.32 E
	depth 23m, enclosed by danger circle with legend <i>FAD</i>	32° 00'.94 S	115° 13'.89 E

Delete	wreck	32° 01'.7 S	115° 13'.6 E
--------	-------	-------------	--------------

Aus 754 [1122/2014]

Insert	red cylindrical light buoy, <i>Fl. Y. 4s</i>	32° 03'.11 S	115° 13'.32 E
	depth 23m, enclosed by danger circle with legend <i>FAD</i>	32° 00'.94 S	115° 13'.89 E

AX 00334S [772/2014]

Insert	red cylindrical light buoy, <i>Fl. Y. 4s</i>	32° 03'.11 S	115° 13'.32 E
	depth 23m, enclosed by danger circle with legend <i>FAD</i>	32° 00'.94 S	115° 13'.89 E

Delete	wreck	32° 01'.7 S	115° 13'.6 E
--------	-------	-------------	--------------

AX 00754S [1122/2014]

Insert	red cylindrical light buoy, <i>Fl. Y. 4s</i>	32° 03'.11 S	115° 13'.32 E
	depth 23m, enclosed by danger circle with legend <i>FAD</i>	32° 00'.94 S	115° 13'.89 E

AXA 0754S [1005/2014]

Insert	red cylindrical light buoy, <i>Fl. Y. 4s</i>	32° 03'.11 S	115° 13'.32 E
	depth 23m, enclosed by danger circle with legend <i>FAD</i>	32° 00'.94 S	115° 13'.89 E

1227* AUSTRALIA - WESTERN AUSTRALIA - Yallingup - Light buoy

Department for Transport WA Notice 217(T)/2014 (AA781863, AA781864)

Aus 755 [1005/2014]

Insert	special spar light buoy, <i>Fl. Y. 4s</i> , without topmark	33° 39'.28 S	115° 00'.39 E
--------	---	--------------	---------------

Aus 756 [1225/2014]

Insert	special spar light buoy, <i>Fl. Y. 4s</i> , without topmark	33° 39'.28 S	115° 00'.39 E
--------	---	--------------	---------------

AX 00755S [1005/2014]

Insert	special spar light buoy, <i>Fl. Y. 4s</i> , without topmark	33° 39'.28 S	115° 00'.39 E
--------	---	--------------	---------------

1228* AUSTRALIA - SOUTH AUSTRALIA - Beachport - Infrastructure; light

Department of Planning, Transport and Infrastructure SA Notice 38/2014 (AA769056)

Aus 127 (plan, Rivoli Bay) [1124/2014]

Insert	accompanying block	37° 29'.3 S	140° 00'.5 E
--------	--------------------	-------------	--------------

Aus 127 (plan, Beachport) [1124/2014]

Insert	accompanying block	37° 29'.4 S	140° 00'.4 E
--------	--------------------	-------------	--------------

1229* AUSTRALIA - VICTORIA - Port Phillip - South Channel - AIS, lights

Victorian Notice 196/2014 (AA778622), Port of Melbourne Corporation (AA779402)

Aus 143 [1060/2014]

Insert	magenta circle with legend <i>A/S</i> , at light beacon	38° 17'.71 S	144° 41'.15 E
	magenta circle with legend <i>A/S</i> , at light beacon	38° 17'.93 S	144° 53'.92 E

Aus 144 [1126/2014]

Insert	magenta circle with legend <i>A/S</i> , at light beacon	38° 17'.705 S	144° 41'.146 E
--------	---	---------------	----------------

Amend	light elevation to 9m	38° 17'.95 S	144° 42'.43 E
	light elevation to 9m	38° 17'.98 S	144° 43'.84 E

1230* AUSTRALIA - TASMANIA - Nav aids - Nav aids
MAST (AA779260)

Aus 179 (plan, Franklin Sound) [857/2014]

Insert	port lateral light beacon, <i>Fl.R.5s</i> , with topmark	40° 19'.43 S	148° 06'.54 E
	port lateral topmark	40° 15'.17 S	148° 13'.35 E

Delete	light buoy	40° 19'.4 S	148° 06'.6 E
--------	------------	-------------	--------------

Aus 179 (plan, Approaches to Lady Barron) [857/2014]

Insert	port lateral light beacon, <i>Fl.R.3s 4m 2M</i> with sector 195.6 - 018.3 (177.3°), with topmark	40° 15'.166 S	148° 13'.350 E
--------	--	---------------	----------------

Substitute	port lateral light beacon, <i>Fl.R.5s 3m</i> , without topmark, for beacon	40° 13'.80 S	148° 14'.00 E
------------	--	--------------	---------------

Move	light beacon	40° 14'.050 S	148° 16'.024 E
	to	40° 14'.053 S	148° 16'.046 E

Delete	light beacon	40° 15'.17 S	148° 13'.34 E
	depth, 1,m	40° 14'.06 S	148° 16'.05 E

1231(T)/2014 AUSTRALIA - NEW SOUTH WALES - Newcastle - Depth information

Former Notice - 1176(T)/2014 is cancelled
Newcastle Port Corporation (AA781653)

Available depths as at 3 December 2014:

<i>Berth</i>	<i>Metres</i>	<i>Remarks</i>
Eastern Basin 1	11.5	
Eastern Basin 2 North of Ch 450	11.6	
Eastern Basin 2 South of Ch 450	11.3	
Western Basin 3	11.6	
Western Basin 4	11.6	
Channel Berth	9.7	
Dyke 1	12.8	
Dyke 2	12.8	
Dyke 4	16.4	
Dyke 5	16.4	
Dyke 6	5.3	
Mayfield 4 Ch 27 to 266	12.8	
BHP Wharf 6 to Ch 1050	7.3	
Kooragang 2	11.6	
Kooragang 2 North Dolphin Ch 182 to 243	11.6	
Kooragang 2 South Dolphin Ch -92 to 00	11.4	
Kooragang 3 Ch -40 to 00	13.1	
Kooragang 3 Ch 00 to 220	13.3	
Kooragang 4	16.2	
Kooragang 5	16.5	
Kooragang 6	16.3	
Kooragang 7	16.5	
Kooragang 8	16.4	
Kooragang 9	16.4	
Kooragang 10	16.4	
Throsby 1 Ch 850 to 1030	8.9	
Carrington Wharf		To be sounded as and when required
Foreshore Park Berth	5.9	
Elgo Wharf		To be sounded as and when required
<i>Channels</i>		
Entrance Approach	17.7	
Entrance Channel (18.0m)	17.8	
Entrance Channel (17.4m)	17.4	
Entrance Channel (16.8m)	16.8	
Entrance Channel (16.2m)	16.2	
Entrance Channel to Horseshoe	15.2	
* Horseshoe	15.2	
Steelworks Channel to Swinging Basin	15.2	
Swinging Basin	15.2	
Hunter River South Arm (Kooragang 6 to buoy 16)	15.2	
Hunter River South Arm (buoy 16 to buoy 20)	15.2	
Basin Cutting	12.6	
Basin Area to Eastern & Western Basin Berths	12.3	
Basin Area to Throsby 1	9.2	
Stockton Crossing	3.6	
* Indicates new or revised entry.		

Chart temporarily affected - Aus 207 - Aus 208

1232(T)/2014 AUSTRALIA - QUEENSLAND - Gladstone - Anchorage area

Former Notice - 418(T)/2011 is cancelled

Maritime Safety Queensland Notice 318(T)/2011 (AA526389)

A small craft anchorage exists within an area bounded by the following positions:

23° 45' 0 S 151° 09' 8 E

23° 45' 0 S 151° 10' 0 E

23° 46' 4 S 151° 10' 4 E

23° 46' 4 S 151° 10' 0 E.

Mooring buoys exist within the area.

Permission must be obtained from Gladstone Port Corporation prior to anchoring or mooring within the area.

Mariners are advised to navigate with caution in the area.

Chart temporarily affected - Aus 245 - Aus 272

1233(T)/2014 AUSTRALIA - QUEENSLAND - Gladstone - North Passage Island to Redcliffe Island - Scientific instruments

Former Notice - 470(T)/2011 is cancelled

Maritime Safety Queensland Notice 376(T)/2011 (AA531285)

Subsurface scientific instruments exist in positions:

23° 45'.91 S 151° 10'.93 E

23° 45'.81 S 151° 11'.11 E

23° 45'.33 S 151° 10'.48 E

23° 45'.23 S 151° 10'.66 E

23° 42'.44 S 151° 08'.84 E

23° 42'.34 S 151° 09'.05 E

23° 41'.39 S 151° 08'.20 E

23° 41'.29 S 151° 08'.41 E.

Chart temporarily affected - Aus 245 - Aus 272 - Aus 819

1234(T)/2014 AUSTRALIA - QUEENSLAND - Hay Point - Depth information

Former Notice - 691(T)/2014 is cancelled

Maritime Safety Queensland Notices 709(T)/2014 (AA781401)

Available depths as at 10 December 2014:

	<i>Metres</i>	<i>Remarks</i>
Entrance Channel	14.7	Between No 4 beacon and the northern end.
	15.0	Seaward of beacon No 4.
HPS Berth No 1	16.4	
HPS Berth No 2	16.8	
* HPS Berth No 3	18.3	
DBCT Berth No 1	17.8	
DBCT Berth No 2	17.7	
DBCT Berth No 3	17.5	
DBCT Berth No 4	17.4	
Tug Harbour entrance channel	5.1	Lesser depths exist close to the outer edges of the channel and around tug berths and piers.
* Indicates revised entry.		

Lesser depth exist in an area south of Hay Point No 1 berth out to approximately 100m east northeast from the seaward edge of berth No 3 and leading southward to the southwest corner of the channel

Chart temporarily affected - Aus 249 - Aus 250 - AX 00249S

1235(T)/2014 AUSTRALIA - QUEENSLAND - Moreton Bay - North West Channel to Fisherman Island - Dredging operations

Former Notice - 588(T)/2014 is cancelled

Date - Until 10 January 2015

Maritime Safety Queensland Notice 703(T)/2014 (AA781041)

The dredge *Charles Darwin* is conducting dredging operations between North West Channel (26° 49'.85 S 153° 08'.84 E) and Fisherman Islands Inner Bar Reach (27° 22'.17 S 153° 10'.13 E).

The dredge will display appropriate lights and shapes and will monitor VHF Ch 12.

Mariners are advised to navigate with caution in the area.

Chart temporarily affected - Aus 235 - Aus 236 - Aus 237 - Aus 814 - Aus 815

1236(T)/2014 AUSTRALIA - QUEENSLAND - Moreton Bay - Brisbane River - Depth information*Former Notice - 1183(T)/2014 is cancelled*

Brisbane Port Corporation (AA780227, AA781355, AA781893)

Available depths and under keel clearances (UKC) at 12 December 2014:

<i>Berth</i>	<i>Metres</i>	<i>Remarks</i>
* Fisherman Islands No12	13.9	
Fisherman Islands No11	14.0	
Fisherman Islands No10	14.0	
* Fisherman Islands No9	14.0	
* Fisherman Islands No8	14.1	
Fisherman Islands No7	13.7	
* Fisherman Islands No6	14.0	
* Fisherman Islands No5	14.0	
Fisherman Islands No4	14.0	
* Fisherman Islands No3	13.6	
Fisherman Islands No2	14.1	
* Fisherman Islands No1	14.0	
* Fisherman Islands Grain and Woodchip	12.9	
* Caltex Fisherman Islands	14.4	
* Fisherman Islands Coal	14.1	
* Fisherman Islands General Purpose	11.1	
* Luggage Point Pump Out Facility	13.0	
* BP Luggage Point	14.3	
* Caltex Products	10.2	
Cement Australia Co Wharf	9.7	
* BP Products	10.9	
* Viva Energy	10.9	
Graincorp Liquid Terminal	10.3	
* Incitec North	10.2	
* Incitec South	10.1	
Pinkenba 1	10.4	
Pinkenba 2	10.4	
Riverside Marina	-	
Sugar Terminal	9.8	
Cairncross Fitting Out Wharf	7.1	
Cairncross Breasting Wharf	4.4	
Brisbane Naval Wharf	4.3	
* Maritime No1	9.0	
* Hamilton No4	10.5	
Hamilton No1	8.8	
Brisbane Cruise Ship Terminal	9.0	
	<i>Metres</i>	<i>UKC/Remarks</i>
<i>Moreton Bay:</i>		
North West Channel	15.0	2.3 (280m width)
North West Bypass Channel	9.2	1.6
Spitfire Channel	15.0	1.5 (600m width)
East Knoll Bypass Channel	6.0	1.4
East Channel	15.0	1.5 (300m width from western side)
Main Channel (M8 - M9)	10.0	1.8
Entrance Channel (E5 - EBCN)	14.7	1.5
<i>Brisbane River:</i>		
Outer Bar Cutting	14.0	1.46
Inner Bar Cutting	13.8	1.46
* Fisherman Islands Swing Basin	13.8	1.3
Fisherman Islands Swing Basin (11.5)	11.5	0.6
River	9.1	0.6 / 0.9 (draft/tide)
Cement Australia Swing Basin	9.1	0.6 / 0.9 (draft/tide)
Pinkenba Swing Basin	9.1	0.6 / 0.9 (draft/tide)
* Hamilton Swing Basin	8.9	0.6 / 0.9 (draft/tide)
* Indicates new or revised entry.		

Chart temporarily affected - Aus 235 - Aus 236 - Aus 237 - Aus 238 - Aus 814 - Aus 815

1237(T)/2014 AUSTRALIA - QUEENSLAND - Port Denison - Light buoy unlit
Maritime Safety Queensland Notice 704(T)/2014 (AA781403)

The starboard lateral light buoy, *Fl.G.4s M5* (20° 02'.36 S 148° 15'.77 E), is unlit.

Chart temporarily affected - Aus 268

1238(T)/2014 AUSTRALIA - QUEENSLAND - Swain Reefs - Hixson Cay - Light altered

Former Notice - 1076(P)/2014 is cancelled

Australian Maritime Safety Authority Preliminary ATH 508/2014 (AA781928)

Cancel this notice on receipt.

Chart formerly affected - Aus 367 - Aus 490 - Aus 4621 (INT 621) - Aus 4635 (INT 635) - AX 04621U

1239(T)/2014 PAPUA NEW GUINEA - Madang Harbour - Biliau Island - Light restored

Former Notice - 1190(T)/2014 is cancelled

National Maritime Safety Authority PNG Notice 37/2014 (AA780346)

Cancel this notice on receipt.

Chart formerly affected - Aus 646

1240(T)/2014 AUSTRALIA - NORTHERN TERRITORY - Darwin - Rock dumping

Former Notice - 827(T)/2014 is cancelled

Date - Until 1 June 2015

Darwin Port Corporation Notice 147(T)/2014 (AA781512)

MV Ndeavor is conducting rock dumping operations between the following positions:

12° 26'.34 S 130° 46'.86 E
12° 27'.70 S 130° 47'.95 E
12° 28'.93 S 130° 48'.66 E
12° 29'.99 S 130° 49'.08 E
12° 31'.39 S 130° 49'.80 E
12° 31'.83 S 130° 50'.20 E
12° 32'.00 S 130° 50'.77 E
12° 32'.11 S 130° 52'.09 E.

A 500m exclusion zone exists around the vessel.

Mariners are advised to navigate with caution in the area.

Chart temporarily affected - Aus 24 - Aus 26 - Aus 27 - Aus 29 - Aus 309 - Aus 316 - Aus 722 - AX 00026T - AX 00309T - AX 00309U - AX 00722T

1241(T)/2014 AUSTRALIA - WESTERN AUSTRALIA - Barrow Island - Light buoy unlit eastward

Port of Barrow Island (AA780332)

The light buoy, *Mo(U)Y.15s* (20° 49'.06 S 115° 32'.95 E) is unlit.

Chart temporarily affected - Aus 62 - Aus 66

1242(T)/2014 AUSTRALIA - WESTERN AUSTRALIA - Barrow Island - Drill rig westwards

MODU *Ocean America* (AA782530)

Drill rig *Ocean America* is conducting drilling operations in position 20° 30'.38 S 114° 28'.12 E.

Chart temporarily affected - Aus 328 - Aus 4723 (INT 723) - Aus 4725 (INT 725) - AX 04723U

1243(T)/2014 AUSTRALIA - WESTERN AUSTRALIA - Exmouth Plateau - Drill rig moved

Former Notice - 1148(T)/2014 is cancelled
 MODU *Ocean America* (AA782530)

Cancel this notice on receipt.

Chart formerly affected - Aus 329 - Aus 4723 (INT 723) - AX 04723U

1244(T)/2014 AUSTRALIA - WESTERN AUSTRALIA - Muiron Islands - Mooring buoys northwestwards

Former Notice - 1091(T)/2014 is cancelled
 Australian Maritime Safety Authority Auscoast Warning 286/2014 (AA780382, AA780387)

8 yellow mooring buoys, *Fl*.3s, exist within 1NM radius of position 21° 26'.04 S 114° 01'.99 E.

Chart temporarily affected - Aus 328 - Aus 329 - Aus 744

1245(T)/2014 AUSTRALIA - WESTERN AUSTRALIA - Pelsaert Bank - Mooring buoys

Former Notice - 1197(T)/2014 is cancelled
 Murphy Australia Oil Pty Ltd (AA781927, AA782031)

Lit orange mooring buoys exist in the following positions:

29° 51'.40 S 114° 29'.81 E

29° 50'.95 S 114° 30'.41 E

29° 51'.06 S 114° 30'.60 E

29° 05'.61 S 114° 16'.49 E

29° 05'.55 S 114° 16'.30 E.

Chart temporarily affected - Aus 332 - Aus 333 - Aus 752 - Aus 753

1246(T)/2014 AUSTRALIA - SOUTH AUSTRALIA - Murray River - Dredging operations; exclusion zone

Date - Until 30 November 2015

Department of Planning, Transport and Infrastructure SA Notice 46/2014 (AA781489)

Dredging operations are in progress in the entrance to Murray River.

An exclusion zone, marked by special buoys, exists around the dredges.

The dredges display appropriate lights and shapes.

Chart temporarily affected - Aus 347

1247(T)/2014 AUSTRALIA - VICTORIA - Port Campbell to King Island - Seismic survey completed

Former Notice - 1041(T)/2014 is cancelled
 MV *Polarcus Asima* (AA781382)

Cancel this notice on receipt.

Chart formerly affected - Aus 141 - Aus 349 - Aus 487 - Aus 787 - Aus 789

1248(T)/2014 AUSTRALIA - VICTORIA - Port Phillip - River Yarra - Victoria Dock - Harbour works completed

Former Notice - 660(T)/2014 is cancelled
 Port of Melbourne Corporation Notice 212/2014 (AA781347)

Cancel this notice on receipt.

Chart formerly affected - Aus 154

1249(T)/2014 AUSTRALIA - VICTORIA - Port Phillip - Corio Bay - Nav aids

Former Notice - 1042(T)/2014 is cancelled
 Victorian Notices 218(T)/2014 (AA782566)

The following light beacons have been repositioned. Light characteristics remain the same:

<i>Name</i>	<i>Old Position</i>	<i>New position</i>
No1	38° 07'.14 S 144° 22'.19 E	38° 07'.13 S 144° 22'.22 E
No3	38° 06'.77 S 144° 22'.24 E	38° 06'.77 S 144° 22'.28 E
No11	38° 07'.45 S 144° 22'.81 E	38° 07'.43 S 144° 22'.82 E
No13	38° 07'.34 S 144° 22'.36 E	38° 07'.33 S 144° 22'.37 E.

Mariners are advised to navigate with caution in the area.

Chart temporarily affected - Aus 153 - Aus 157**1250(T)/2014 AUSTRALIA - VICTORIA - Port Phillip - Port Melbourne - Station Pier - Diving operations**

Date - Until 13 February 2015
 Port of Melbourne Corporation Notice 219(T)/2014 (AA782582)

Diving operations are in progress at Inner West berth Station Pier, (37° 50'.67S 144° 55'.84 E).

MV *Pro diver* is on site and will display appropriate shapes and will monitor VHF Ch 12.

Mariners are advised to navigate with caution in the area.

Chart temporarily affected - Aus 154**1251(T)/2014 AUSTRALIA - TASMANIA - Georges Bay - Beacon destroyed**

Marine and Safety Tasmania Notice M133/2014 (AA781164)

The port lateral beacon No 8A, (41° 18'.50 S 148° 17'.65 E), has been destroyed.

Chart temporarily affected - Aus 169

HYDROGRAPHIC REPORTS

<i>Locality</i>	<i>Report</i>	<i>Ship/Authority</i>	<i>Observer</i>
QLD- Derwent Island	Depth		M Arthur
NSW- Newcastle	Light Buoy		G Hitchens
QLD- Great Sandy Strait	Light Buoys		G Hitchens

NAVIGATION WARNINGS

The following radio messages have been received during the period to 18 December 2014. Signal copies of these messages may be destroyed. It is recommended that the reprint of Navigational Warnings should be kept in a file or a book divided into areas. Cancellation should be made on receipt of signals and reprints.

Rigs on location other than those listed in the latest Section III summary are the subject of Radio Navigational Warnings. Rigs in transit will not be the subject of Warnings.

AUSCOAST WARNING

- 281 Cancelled.
- 282 Breaksea Island auxiliary light K1800 established in position 35° 03'.87 S 118° 03'.45 E. Light characteristics *Fl(4)R.6s 119m 15M.*
- 283 4 yellow lit mooring buoys established within 1NM of 29° 51'.16 S 114° 30'.34 E.
- 284 Swain Reefs Light K3014 in position 22° 19'.95 S 152° 43'.83 E has been altered. New light characteristics *Fl. 10s 18m 18M.*
- 285 Swain Reefs daymark in position 22° 19'.95 S 152° 43'.83 E has been altered. New daymark characteristics 9 metre stainless steel tower and pile structure surmounted by white 8 metre grp tower 17m above MHWS.
- 286 8 6 metre yellow light buoys established within 1NM of 21° 26'.04 S 114° 01'.98 E.
- 287 Cancelled.
- 288 4 yellow lit mooring buoys established within 0.5NM of 29° 05'.49 S 114° 16'.53 E.
- 289 Cancelled.
- 290 Special purpose vessel *Sanco Sword* is conducting seismic survey towing 12 5NM seismic cables in an area bounded by 33° 59'.00 S 130° 52'.00 E and 35° 54'.00 S 132° 36'.00 E, 5NM clearance requested.
- 291 Cancelled.
- 292 Kemp Rocks buoy light, Q(3). 10s 5M, Established 12° 26'.30 S 143° 21'.69 E.
- 293 Middle Reef light K3240.4 in position 12° 31'.47 S 143° 23'.68 E red sector permanently discontinued.
- 294 Swain Reefs light K3014 in position 22° 19'.95 S 152° 43'.83 E altered. New light characteristics *Fl. 10s 18m 18M.*
- 295 Cancelled.

NAVAREA X WARNINGS

- 078 Cancelled.
- 079 Special purpose vessel *Fugro Discovery* conducting underwater vehicle towing operations in an area bounded by 34° 52'.0 S 92° 44'.0 E, 35° 06'.0 S 92° 59'.0 E, 38° 45'.0 S 86° 32'.0 E and 39° 03'.0 S 86° 46'.0 E. 10M clearance requested.
- 080 Special purpose vessel *Go Phoenix* conducting underwater operations in an area bounded by 32° 42'.0 S 95° 23'.0 E and 35° 14'.0 S 92° 42'.0 E. 10M clearance requested.
- 081 Cancelled.

Navigational warnings in force as at 180001UTC DEC 14.

Auscoast

2014 231 243 247 255 262 263 268 278 282 283 284 285 286 288 290 292 293 294

Navarea X

2014 079 080 082

Summary of mobile drilling rigs as at 180001UTC DEC 14.

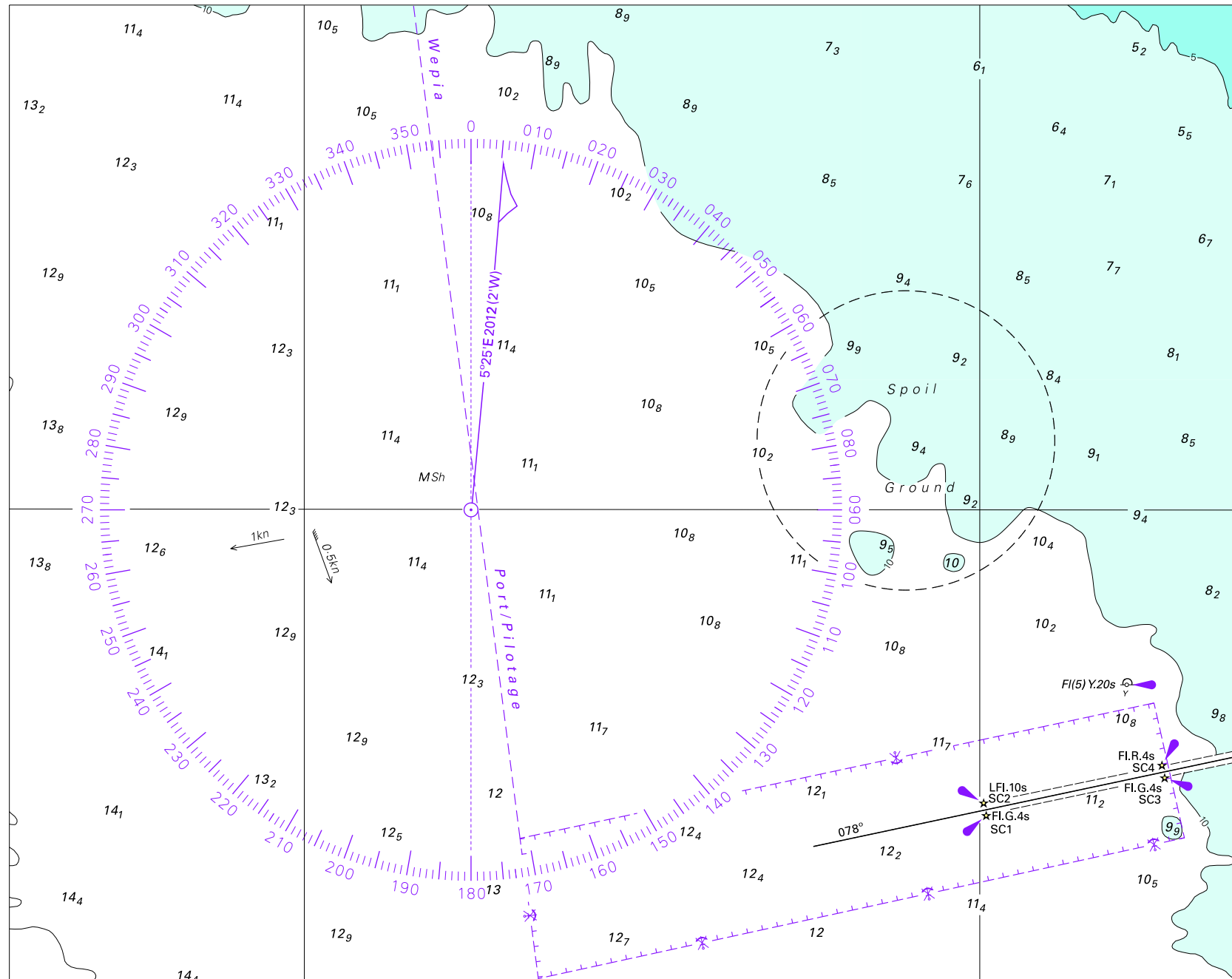
Name	Position
Armada Claire	20° 03'.50 S 115° 11'.50 E
Atwood Eagle	19° 58'.20 S 115° 12'.80 E
Atwood Falcon	21° 21'.00 S 114° 04'.40 E
Atwood Osprey	19° 56'.70 S 115° 19'.50 E
Deepwater Frontier	19° 48'.59 S 114° 33'.57 E
Deepwater Millennium	16° 37'.00 S 119° 12'.50 E
Jack Bates	10° 38'.60 S 126° 11'.00 E
Nan Hai 6	09° 47'.70 S 130° 13'.70 E
Noble Clyde Boudreaux	13° 49'.00 S 123° 19'.40 E
Ocean America	20° 07'.50 S 113° 17'.10 E
Transocean Legend	11° 06'.10 S 126° 45'.10 E

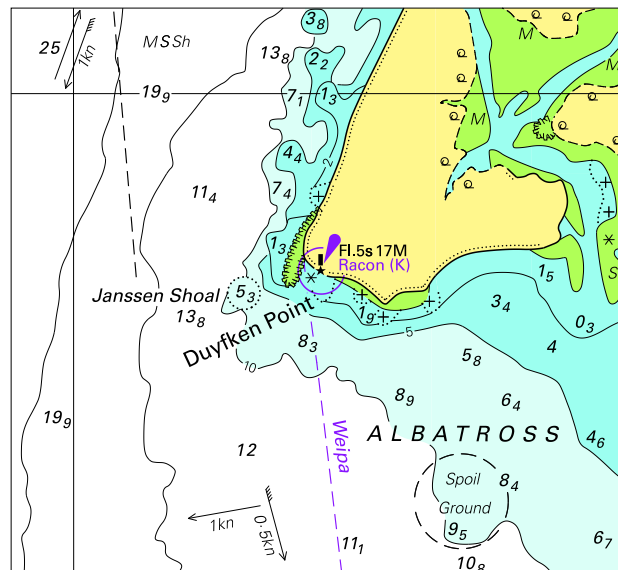
NAVAREA XIV WARNINGS

- 096 Southern Ocean, Voluntary Ship Reporting system in New Zealand search and rescue area south of 60° S
1. The new Zealand search and rescue authorities have established a voluntary ship reporting system for all vessels operating in the nzsar region south of 60 ° S for the purposes of assisting the sar authority in coordinating sar operations in that area.
 2. Area covered: 60 ° S to the southern edge of the ross sea bounded by 163 ° E to 131 ° W.
 3. All vessels are requested to notify taupo maritime radio on entry and departure into the area and are also encouraged to make daily position reports. Information provided will be used for sar purposes only.
 4. Taupo maritime radio can be contacted on inmarsat c 582 451 200 067, hf, email maritime@kordia.co.nz or 00 64 4 550 5280.

Navarea XIV warnings in force as at 180001UTC DEC 14.

2014 085 096

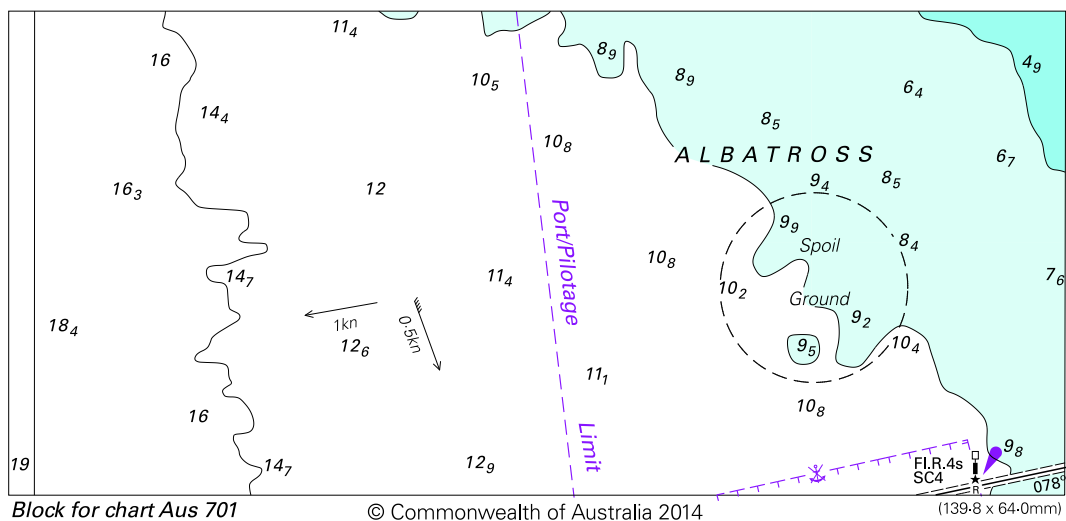


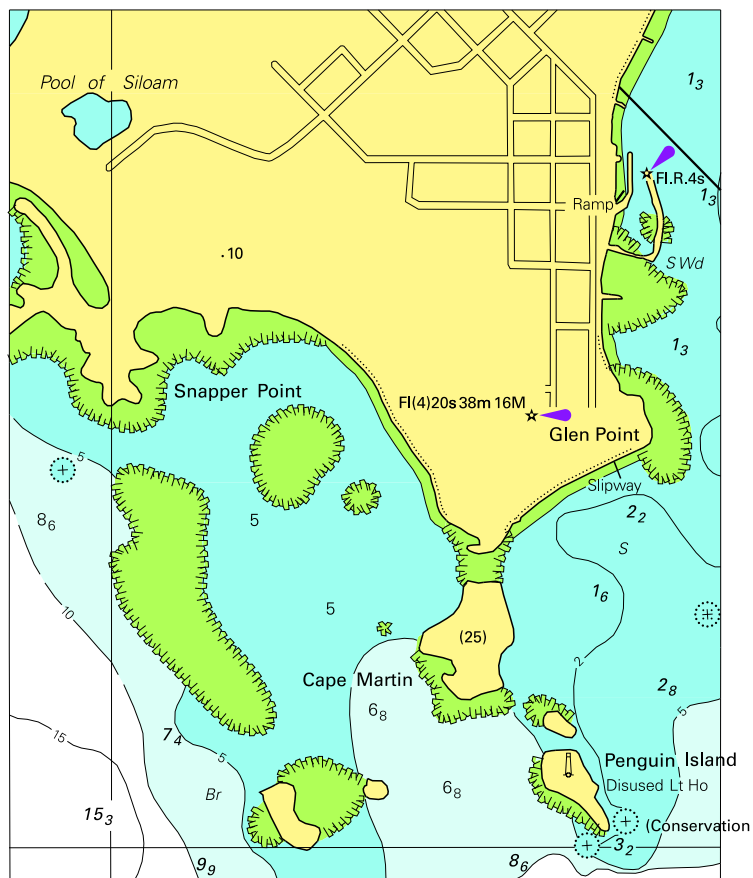


© Commonwealth of Australia 2014

Block for chart Aus 301

(81.4 x 74.6mm)

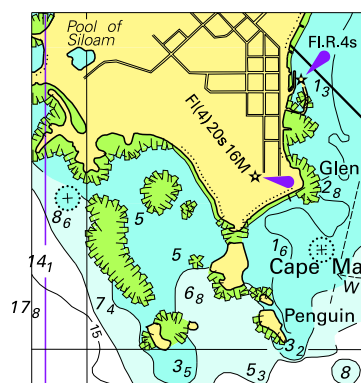




Block A for Chart Aus 127

(94.0 x 115.2mm)

© Commonwealth of Australia 2014



© Commonwealth of Australia 2014
Block B for Chart Aus 127
(43.8 x 49.5mm)