



5 December 2014

Edition 24

Australian Notices to Mariners are the authority for correcting Australian Charts and Publications

AUSTRALIAN NOTICES TO MARINERS

Notices 1155 - 1205



*The Hydrographer and Staff of the Australian Hydrographic Service
wish all users of Australian Navigational Products a Merry Christmas,
a Happy New Year and safe, successful voyages in 2015.*



Published fortnightly by the Australian Hydrographic Service

Commodore B.K. BRACE RAN
Hydrographer of Australia

SECTIONS.

- I. **Australian Notices to Mariners, including blocks and notes.**
- II. **Hydrographic Reports.**
- III. **Navigational Warnings.**

SUPPLEMENTS.

- I. **Tracings**
- II. **Cumulative List of Australian Notices to Mariners.**
- III. **Cumulative List of Temporary and Preliminary Australian Notices to Mariners.**
- IV. **Temporary and Preliminary Notices in force.**
- V. **Amendments to Admiralty List of Lights and Fog Signals (Vol K),
Radio Signals (NP 281(2), 282, 283(2), 285, 286(4)) and Sailing
Directions (NP 9, 13, 14, 15, 33, 34, 35, 36, 39, 44, 51, 60, 61, 62, 100, 136).**

© Commonwealth of Australia 2014

This work is copyright. Apart from any use permitted under the Copyright Act 1968, no part may be reproduced by any process, adapted, communicated or commercially exploited without prior written permission from The Commonwealth represented by the Australian Hydrographic Service.

IMPORTANT NOTICE

This edition of Notices to Mariners includes all significant information affecting AHS products which the AHS has become aware of since the last edition. All reasonable efforts have been made to ensure the accuracy and completeness of the information, including third party information, on which these updates are based. The AHS regards third parties from which it receives information as reliable, however the AHS cannot verify all such information and errors may therefore exist. The AHS does not accept liability for errors in third party information.

GENERAL INSTRUCTIONS

The substance of these notices should be inserted on the charts affected.

Bearings are referred to the true compass and are reckoned clockwise from North; those relating to lights are given as seen by an observer from seaward. Positions quoted in permanent notices relate to the horizontal datum for the chart(s). When preliminary or temporary notices affect multiple charts, positions will be provided in relation to only one horizontal datum and that datum will be specified. When the multiple charts do not have a common horizontal datum, mariners will be required to adjust the position(s) for those charts not on the specified datum. The range quoted for a light is its nominal range. Depths are with reference to the chart datum of each chart. Heights are above mean high water springs or mean higher high water, as appropriate.

The capital letter (P) or (T) after the number of any notice denotes a preliminary or temporary notice respectively, which are contained separately at the end of the permanent notices. A star (*) adjacent to the number of a notice indicates that the notice is based on original information.

REPORTING OF DANGERS

Mariners are particularly requested to notify the AUSTRALIAN HYDROGRAPHIC SERVICE, Locked Bag 8801 Wollongong, NSW 2500 (Fax 02-4223 6599, e-mail Hydro.NTM@defence.gov.au or, alternatively by filling in and submitting the [Hydrographic Notes](#) forms located on the web site – www.hydro.gov.au), immediately on the discovery of new dangers or suspected dangers to navigation. For changes or defects in aids to navigation notify AusSAR (Fax 02-6230 6868 or email rccaus@amsa.gov.au).

AUTHORISED USE

Copies of Australian notices are available free of charge from the Australian Hydrographic Service (AHS) website (www.hydro.gov.au) and through the eNotices (email) service (www.hydro.gov.au/enotices/enotices.htm).

Individual Notices may be copied for the purpose of inserting Notice substance on official charts and publications. Paper copies may be printed by chart agents and distributed to customers on a cost recovery basis. Participating chart agents are listed on the AHS website as providing a 'Paper Notices to Mariners' service (www.hydro.gov.au/prodserv/distributors/distributors.htm). Copies of the notices may not be sold for profit without prior written agreement.

NUMERICAL INDEX OF NOTICES TO MARINERS

Edition No 24

| Notices | Aus Chart, INT Chart, ENC Cell, AHP, BA Pubs |
|---------|--|
| 1155 | Aus 158, 328, 722, 741, 742, 743, 744, 776 |
| 1156 | Amendment to Australian Notice to Mariners No 4B |
| 1157 | Amendment to Seafarers Handbook for Australian Waters AHP20 |
| 1158 | Navigational MSI to be broadcast 30 minutes earlier from 1 December 2014 |
| 1159 | Aus 814 |
| 1160 | Aus 251, 823, 824, AX 00823S |
| 1161 | Aus 257 |
| 1162 | Aus 26, 309, 316, 722, AX 00026T, 00309U, 00309T, 00722T |
| 1163 | Aus 727 |
| 1164 | Aus 329 |
| 1165 | Aus 55, 740 |
| 1166 | Aus 64, 743 |
| 1167 | Aus 137 |
| 1168 | Aus 139 |
| 1169 | Aus 122 |
| 1170 | Aus 133, 777, 778 |
| 1171 | Aus 154 |
| 1172 | Aus 157 |
| 1173 | Aus 173, 174, 795 |
| 1174 | Aus 177, 792 |
| 1175 | Aus 171, 172 |
| 1176(T) | Aus 207, 208 |
| 1177(T) | Aus 219, 489, 809, 810, 811, 812, 4643, INT 643, AX 00809S |
| 1178(T) | Aus 268 |
| 1179(T) | Aus 238 |
| 1180(T) | Aus 249, 823, AX 00249S, 00823S |
| 1181(T) | Aus 251, 823, 824, AX 0823E |
| 1182(T) | Aus 259, 267 |
| 1183(T) | Aus 235, 236, 237, 238, 814, 815 |
| 1184(T) | Aus 235, 236, 814, 815 |
| 1185(P) | Aus 292, 293 |
| 1186(T) | Aus 251, 824 |
| 1187(T) | Aus 260, 261, 820, 822, AX 00260T, 00260S, 00820S, 00822S |
| 1188(T) | Aus 293, 299 |
| 1189(T) | Aus 392, 393, 543, 666 |
| 1190(T) | Aus 646 |
| 1191(T) | Aus 389, 651, 4622, INT 622 |
| 1192(T) | Aus 26, 28, AX 00026T |
| 1193(T) | Aus 20 |
| 1194(T) | Aus 328 |
| 1195(T) | Aus 320, 4721, 4722, INT 721, 722, AX 04721U, 04722U |
| 1196(T) | Aus 319, 320, AX 00319U |
| 1197(T) | Aus 332, 333, 752, 753 |
| 1198(T) | Aus 52, 54 |
| 1199(T) | Aus 4722, INT 722, AX 04722U |
| 1200(T) | Aus 64, 743, 744 |
| 1201(T) | Aus 137 |
| 1202(T) | Aus 133 |
| 1203(T) | Aus 122 |
| 1204(T) | Aus 4727, INT 727 |
| 1205(T) | Aus 164 |

NUMERICAL INDEX OF CHARTS AFFECTED

Edition No 24

| Aus Chart | Notices |
|-----------|------------------------|
| Aus 20 | 1193(T) |
| Aus 26 | 1162, 1192(T) |
| Aus 28 | 1192(T) |
| Aus 52 | 1198(T) |
| Aus 54 | 1198(T) |
| Aus 55 | 1165 |
| Aus 64 | 1166, 1200(T) |
| Aus 122 | 1169, 1203(T) |
| Aus 133 | 1170, 1202(T) |
| Aus 137 | 1167, 1201(T) |
| Aus 139 | 1168 |
| Aus 154 | 1171 |
| Aus 157 | 1172 |
| Aus 158 | 1155 |
| Aus 164 | 1205(T) |
| Aus 171 | 1175 |
| Aus 172 | 1175 |
| Aus 173 | 1173 |
| Aus 174 | 1173 |
| Aus 177 | 1174 |
| Aus 207 | 1176(T) |
| Aus 208 | 1176(T) |
| Aus 219 | 1177(T) |
| Aus 235 | 1183(T), 1184(T) |
| Aus 236 | 1183(T), 1184(T) |
| Aus 237 | 1183(T) |
| Aus 238 | 1179(T), 1183(T) |
| Aus 249 | 1180(T) |
| Aus 251 | 1160, 1181(T), 1186(T) |
| Aus 257 | 1161 |
| Aus 259 | 1182(T) |
| Aus 260 | 1187(T) |
| Aus 261 | 1187(T) |
| Aus 267 | 1182(T) |
| Aus 268 | 1178(T) |
| Aus 292 | 1185(P) |
| Aus 293 | 1185(P), 1188(T) |
| Aus 299 | 1188(T) |
| Aus 309 | 1162 |
| Aus 316 | 1162 |
| Aus 319 | 1196(T) |
| Aus 320 | 1195(T), 1196(T) |
| Aus 328 | 1155, 1194(T) |
| Aus 329 | 1164 |
| Aus 332 | 1197(T) |
| Aus 333 | 1197(T) |
| Aus 389 | 1191(T) |
| Aus 392 | 1189(T) |
| Aus 393 | 1189(T) |
| Aus 489 | 1177(T) |
| Aus 543 | 1189(T) |
| Aus 646 | 1190(T) |
| Aus 651 | 1191(T) |
| Aus 666 | 1189(T) |

| Aus Chart | Notices |
|-----------|------------------------|
| Aus 722 | 1155, 1162 |
| Aus 727 | 1163 |
| Aus 740 | 1165 |
| Aus 741 | 1155 |
| Aus 742 | 1155 |
| Aus 743 | 1155, 1166, 1200(T) |
| Aus 744 | 1155, 1200(T) |
| Aus 752 | 1197(T) |
| Aus 753 | 1197(T) |
| Aus 776 | 1155 |
| Aus 777 | 1170 |
| Aus 778 | 1170 |
| Aus 792 | 1174 |
| Aus 795 | 1173 |
| Aus 809 | 1177(T) |
| Aus 810 | 1177(T) |
| Aus 811 | 1177(T) |
| Aus 812 | 1177(T) |
| Aus 814 | 1159, 1183(T), 1184(T) |
| Aus 815 | 1183(T), 1184(T) |
| Aus 820 | 1187(T) |
| Aus 822 | 1187(T) |
| Aus 823 | 1160, 1180(T), 1181(T) |
| Aus 824 | 1160, 1181(T), 1186(T) |
| Aus 4622 | 1191(T) |
| Aus 4643 | 1177(T) |
| Aus 4721 | 1195(T) |
| Aus 4722 | 1195(T), 1199(T) |
| Aus 4727 | 1204(T) |
| AX 00026T | 1162, 1192(T) |
| AX 00249S | 1180(T) |
| AX 00260S | 1187(T) |
| AX 00260T | 1187(T) |
| AX 00309T | 1162 |
| AX 00309U | 1162 |
| AX 00319U | 1196(T) |
| AX 00722T | 1162 |
| AX 00809S | 1177(T) |
| AX 00820S | 1187(T) |
| AX 00822S | 1187(T) |
| AX 00823S | 1160, 1180(T) |
| AX 0823E | 1181(T) |
| AX 04721U | 1195(T) |
| AX 04722U | 1195(T), 1199(T) |

| INT Chart | Notices |
|-----------|------------------|
| INT 622 | 1191(T) |
| INT 643 | 1177(T) |
| INT 721 | 1195(T) |
| INT 722 | 1195(T), 1199(T) |
| INT 727 | 1204(T) |

1155 AUSTRALIA - Products
 Australian Hydrographic Service (AA778822)

New Edition

| <i>Chart</i> | <i>Published</i> | <i>Title and description of amendments</i> | <i>Scale</i> | <i>Index Chart</i> | <i>Price</i> |
|--------------|------------------|---|--------------|---------------------|--------------|
| Aus 328 | 5/12/2014 | Australia - North West Coast - Western Australia - Montebello Islands to North West Cape 18° 46'·5 S - 21° 58'·0 S 113° 33'·5 E - 115° 32'·0 E <i>New edition with general updating throughout; including new pipelines.</i> | 1:300 000 | Aus 5000 | \$35.00 |
| Aus 722 | 5/12/2014 | Australia - North Coast - Northern Territory - Beagle Gulf and Clarence Strait 11° 39'·50 S - 12° 37'·90 S 129° 51'·00 E - 131° 24'·92 E <i>New edition with general updating throughout; including new pipelines.</i> | 1:150 000 | Aus 5000 | \$35.00 |
| Aus 741 | 5/12/2014 | Australia - North West Coast - Western Australia - Approaches to Dampier Archipelago 19° 12'·0 S - 20° 48'·0 S 116° 18'·6 E - 117° 18'·0 E <i>New edition with general updating throughout; including new pipelines.</i> | 1:150 000 | Aus 5000 | \$35.00 |
| Aus 742 | 5/12/2014 | Australia - North West Coast - Western Australia - Rosemary Island to Barrow Island 20° 04'·00 S - 20° 59'·92 S 115° 04'·17 E - 116° 38'·08 E <i>New edition with general updating throughout; including new pipelines.</i> | 1:150 000 | Aus 5000 | \$35.00 |
| Aus 743 | 5/12/2014 | Australia - North West Coast - Western Australia - Barrow Island to Onslow 20° 47'·92 S - 21° 43'·58 S 114° 40'·08 E - 116° 13'·98 E <i>New edition with general updating throughout; including new pipelines.</i> | 1:150 000 | Aus 5000 & Aus 5001 | \$35.00 |
| Aus 744 | 5/12/2014 | Australia - North West Coast - Western Australia - Exmouth Gulf and Approaches 21° 07'·35 S - 22° 35'·00 S 114° 00'·00 E - 114° 59'·38 E <i>New edition with general updating throughout; including new pipelines.</i> | 1:150 000 | Aus 5000 & Aus 5001 | \$35.00 |

New edition to be published shortly

| <i>Chart</i> | <i>Title</i> | <i>Scale</i> | <i>Expected Publication Date</i> |
|--------------|---|--------------|----------------------------------|
| Aus 158 | Australia - South Coast - Victoria - Port Phillip - South and West Channels | 1:37 500 | 19 December 2014 |
| Aus 776 | Australia - South Coast - South Australia - Williams Island to Winceby Island | 1:150 000 | 19 December 2014 |

Chart permanently withdrawn

| <i>Chart</i> | <i>On publication of new edition</i> |
|--------------|--------------------------------------|
| Aus 328 | Aus 328 |
| Aus 722 | Aus 722 |
| Aus 741 | Aus 741 |
| Aus 742 | Aus 742 |
| Aus 743 | Aus 743 |
| Aus 744 | Aus 744 |

For further details refer to the AHS website at www.hydro.gov.au for new edition and new chart stock arrival information.

When placing orders with a chart agent, mariners should advise whether their order pertains to the current edition or the new edition.

1156 AUSTRALIA - Product - Amendment to Australian Notice to Mariners No 4B

Australian Bureau of Meteorology (AA778485)

Page 27

Delete page 27*Insert* accompanying page**1157 AUSTRALIA - Product - Amendment to Seafarers Handbook for Australian Waters AHP20**

Australian Bureau of Meteorology (AA774707, AA779807), Maritime Safety Queensland Notice 595/2014 (AA776183)

Chapter 9 - Maritime Safety Information Services

Delete pages 137 to 143*Insert* accompanying block

Chapter 12 - Queensland Ports

Delete Weipa port table page 213*Insert* accompanying block**1158 AUSTRALIA - Navigational MSI to be broadcast 30 minutes earlier from 1 December 2014**

Australian Bureau of Meteorology (AA778491)

Weather information from the Bureau of Meteorology has become more detailed and comprehensive in recent years, placing pressure on the existing HF radio schedules. A change to the HF broadcast schedule is required from 1 December 2014 to ensure that all relevant weather information is broadcast during the allotted time schedule. The Bureau of Meteorology has requested that the broadcast time for Navigational Maritime Safety Information (MSI) be shifted thirty minutes earlier to 25 past each UTC hour.

The key changes include:

1. Navigational MSI will be broadcast 30 minutes earlier from 1 December 2014.
2. The Navigational MSI broadcast time will shift from 57 past the UTC hour to 25 past the UTC hour.
3. The allocated time for Navigational MSI will be expanded from 3 minutes to 5 minutes.

1159* AUSTRALIA - QUEENSLAND - South Stradbroke Island - Fish aggregation device

Maritime Safety Queensland 650/2014 (AA776666)

Aus 814 [949/2014]

| | | | |
|------|------------|--------------|---------------|
| Move | light buoy | 27° 48'.00 S | 153° 54'.28 E |
| | to | 27° 52'.04 S | 153° 49'.32 E |

1160* AUSTRALIA - QUEENSLAND - St Bees Island - Nav aids

Maritime Safety Queensland Notice 657/2014 (AA777092, AA777766, AA778360)

Aus 251 [NE 18/7/2014]

| | | | |
|------------|--|-------------|--------------|
| Substitute | north cardinal conical light buoy, Q, for light beacon | 20° 54'.0 S | 149° 25'.9 E |
|------------|--|-------------|--------------|

| | | | |
|--------|--------------|-------------|--------------|
| Delete | light beacon | 20° 56'.2 S | 149° 29'.0 E |
|--------|--------------|-------------|--------------|

Aus 823 [NE 18/7/2014]

| | | | |
|--------|-------|-------------|--------------|
| Delete | light | 20° 56'.2 S | 149° 29'.0 E |
|--------|-------|-------------|--------------|

Aus 824 [NE 18/7/2014]

| | | | |
|------------|--|-------------|--------------|
| Substitute | north cardinal conical light buoy, Q, for light beacon | 20° 54'.0 S | 149° 25'.9 E |
|------------|--|-------------|--------------|

| | | | |
|--------|--------------|-------------|--------------|
| Delete | light beacon | 20° 56'.2 S | 149° 29'.0 E |
|--------|--------------|-------------|--------------|

AX 00823S [402/2014]

| | | | |
|--------|-------|-------------|--------------|
| Delete | light | 20° 56'.2 S | 149° 29'.0 E |
|--------|-------|-------------|--------------|

1161* AUSTRALIA - QUEENSLAND - Townsville - Ross River - Light beacons

Maritime Safety Queensland Notice 668/2014 (AA777879, AA778585)

Aus 257 [1052/2014]

| | | | |
|--------|--|---------------|----------------|
| Insert | light beacon, <i>Fl.G.2s No19</i> , with starboard lateral topmark | 19° 16'.769 S | 146° 49'.615 E |
| | light beacon, <i>Fl.R.2s No20</i> , with port lateral topmark | 19° 16'.791 S | 146° 49'.642 E |
| | light beacon, <i>Fl.G.2s No17</i> , with starboard lateral topmark | 19° 16'.660 S | 146° 49'.790 E |
| | light beacon, <i>Fl.G.2s No15</i> , with starboard lateral topmark | 19° 16'.589 S | 146° 49'.869 E |
| | light beacon, <i>Fl.R.1·5s No14</i> , with port lateral topmark | 19° 16'.399 S | 146° 49'.978 E |

1162* AUSTRALIA - NORTHERN TERRITORY - Fenton Patches to Lorna Shoal - Depths
 HMAS *Shepparton* (DHDB 525472)

Aus 26 [NE 21/11/2014]

| | | | |
|--------|---|--------------|---------------|
| Insert | depth, 19 ₃ m, enclosed by contour | 12° 16'.72 S | 130° 30'.29 E |
|--------|---|--------------|---------------|

Aus 309 [953/2014]

| | | | |
|--------|--|--------------|---------------|
| Insert | depth, 19 ₃ m, and extend contour NW to enclose | 12° 16'.72 S | 130° 30'.29 E |
| | depth, 19 ₃ m, and extend contour N to enclose | 12° 20'.46 S | 130° 15'.23 E |

| | | | |
|--------|--------------------------|-------------|--------------|
| Delete | depth, 19 ₇ m | 12° 17'.1 S | 130° 30'.8 E |
| | depth, 21 ₅ m | 12° 20'.5 S | 130° 16'.0 E |

Aus 316 [797/2011]

| | | | |
|--------|--|--------------|---------------|
| Insert | depth, 19 ₃ m, and extend contour NW to enclose | 12° 16'.72 S | 130° 30'.29 E |
| | depth, 19 ₃ m, and extend contour N to enclose | 12° 20'.46 S | 130° 15'.23 E |

| | | | |
|--------|--------------------------|-------------|--------------|
| Delete | depth, 19 ₇ m | 12° 17'.1 S | 130° 30'.8 E |
| | depth, 18 ₈ m | 12° 21'.2 S | 130° 15'.3 E |

Aus 722 [NE 5/12/2014]

| | | | |
|--------|--|--------------|---------------|
| Insert | depth, 19 ₃ m, and extend contour NW to enclose | 12° 16'.72 S | 130° 30'.29 E |
| | depth, 19 ₃ m, enclosed by contour | 12° 20'.46 S | 130° 15'.23 E |

| | | | |
|------------|--|-------------|--------------|
| Substitute | depth, 14 ₈ m, for depth, 14 ₈ m | 12° 11'.4 S | 130° 41'.8 E |
|------------|--|-------------|--------------|

| | | | |
|--------|--------------------------|-------------|--------------|
| Delete | depth, 21 ₅ m | 12° 16'.5 S | 130° 30'.3 E |
| | depth, 19 ₇ m | 12° 17'.1 S | 130° 30'.8 E |

AX 00026T [771/2014]

| | | | |
|--------|---|--------------|---------------|
| Insert | depth, 19 ₃ m, enclosed by contour | 12° 16'.72 S | 130° 30'.29 E |
|--------|---|--------------|---------------|

AX 00309T [953/2014]

| | | | |
|--------|--|--------------|---------------|
| Insert | depth, 19 ₃ m, and extend contour NW to enclose | 12° 16'.72 S | 130° 30'.29 E |
| | depth, 19 ₃ m, and extend contour N to enclose | 12° 20'.46 S | 130° 15'.23 E |

| | | | |
|--------|--------------------------|-------------|--------------|
| Delete | depth, 19 ₇ m | 12° 17'.1 S | 130° 30'.8 E |
| | depth, 21 ₅ m | 12° 20'.5 S | 130° 16'.0 E |

AX 00309U [953/2014]

| | | | |
|--------|--|--------------|---------------|
| Insert | depth, 19 ₃ m, and extend contour NW to enclose | 12° 16'.72 S | 130° 30'.29 E |
| | depth, 19 ₃ m, and extend contour N to enclose | 12° 20'.46 S | 130° 15'.23 E |

| | | | |
|--------|--------------------------|-------------|--------------|
| Delete | depth, 19 ₇ m | 12° 17'.1 S | 130° 30'.8 E |
| | depth, 21 ₅ m | 12° 20'.5 S | 130° 16'.0 E |

AX 00722T [1053/2014]

| | | | |
|--------|--|--------------|---------------|
| Insert | depth, 19 ₃ m, and extend contour NW to enclose | 12° 16'.72 S | 130° 30'.29 E |
| | depth, 19 ₃ m, enclosed by contour | 12° 20'.46 S | 130° 15'.23 E |

| | | | |
|------------|--|-------------|--------------|
| Substitute | depth, 14 ₈ m, for depth, 14 ₈ m | 12° 11'.4 S | 130° 41'.8 E |
|------------|--|-------------|--------------|

| | | | |
|--------|--------------------------|-------------|--------------|
| Delete | depth, 21 ₅ m | 12° 16'.5 S | 130° 30'.3 E |
| | depth, 19 ₇ m | 12° 17'.1 S | 130° 30'.8 E |

1163* AUSTRALIA - NORTHERN TERRITORY - Stewart Islands to Scorpion Island - Depths
 HMAS Shepparton (DHDB 525472)

Aus 727 [1004/2014]

| | | | |
|------------|---|--------------|---------------|
| Insert | depth, 19 ₂ m, and extend contour N to enclose | 13° 39'.08 S | 126° 55'.82 E |
| Substitute | depth, 21 ₉ m, for depth, 24 ₅ m | 13° 53'.7 S | 126° 39'.6 E |
| Delete | depth, 16 ₃ m | 13° 39'.5 S | 126° 55'.8 E |

1164* AUSTRALIA - WESTERN AUSTRALIA - North West Cape - Pipelines, wells
 Australian Hydrographic Service (AA778822)

Aus 329 [406/2014]

| | | | |
|--------|--------------------|-------------|--------------|
| Insert | accompanying block | 21° 30'.0 S | 114° 00'.0 E |
|--------|--------------------|-------------|--------------|

1165* AUSTRALIA - WESTERN AUSTRALIA - Port Walcott - Light buoys
 Australian Maritime Safety Authority (AA777922, AA777922)

Aus 55 [1088/2013]

| | | | |
|--------|--------------------|-------------|--------------|
| Insert | accompanying block | 20° 25'.0 S | 117° 25'.0 E |
|--------|--------------------|-------------|--------------|

Aus 740 [957/2014]

| | | | |
|--------|--------------------|-------------|--------------|
| Insert | accompanying block | 20° 25'.0 S | 117° 25'.0 E |
|--------|--------------------|-------------|--------------|

1166* AUSTRALIA - WESTERN AUSTRALIA - Saladin Shoal - Light buoy
 Chevron Australia Pty Ltd (AA777681, AA778580)

Aus 64 [121/2014]

| | | | |
|--------|--|--------------|---------------|
| Insert | east cardinal spar light buoy, Q(3)10s, with topmark | 21° 34'.25 S | 115° 01'.99 E |
|--------|--|--------------|---------------|

Aus 743 [NE 5/12/2014]

| | | | |
|--------|--|--------------|---------------|
| Insert | east cardinal spar light buoy, Q(3)10s, with topmark | 21° 34'.25 S | 115° 01'.99 E |
|--------|--|--------------|---------------|

1167* AUSTRALIA - SOUTH AUSTRALIA - Port Adelaide River - Beacons
 HydroSurvey Australia (AA776679, AA776778)

Aus 137 [907/2014]

| | | | |
|--------|---|---------------|----------------|
| Insert | light beacon, Fl.R.2s No26, with port lateral topmark | 34° 45'.615 S | 138° 30'.335 E |
| Delete | beacon | 34° 45'.61 S | 138° 30'.35 E |

1168* AUSTRALIA - SOUTH AUSTRALIA - Port Giles - Light
 HydroSurvey Australia (AA776684, AA776778)

Aus 139 (plan, Macdonnell Sound) [908/2014]

| | | | |
|------|-------|--------------|---------------|
| Move | light | 35° 01'.30 S | 137° 46'.14 E |
| | to | 35° 01'.31 S | 137° 46'.10 E |

Aus 139 (plan, Port Giles) [908/2014]

| | | | |
|--------|------------------|--------------|---------------|
| Insert | light, Fl.3s 10M | 35° 01'.31 S | 137° 46'.10 E |
| Delete | light | 35° 01'.30 S | 137° 46'.14 E |

1169* AUSTRALIA - SOUTH AUSTRALIA - Thevenard - Yatala Channel - Light beacon
 HydroSurvey Australia (AA776801)

Aus 122 [191/2013]

| | | | |
|------|--------------|---------------|----------------|
| Move | light beacon | 32° 11'.03 S | 133° 36'.17 E |
| | to | 32° 11'.034 S | 133° 36'.197 E |

1170* AUSTRALIA - SOUTH AUSTRALIA - Wallaroo - Light beacon
Flinders Ports (AA778413)

Aus 133 (plan, Wallaroo) [452/2013]

| | | | |
|-------|-------------------|--------------|---------------|
| Amend | light range to 4M | 33° 54'.40 S | 137° 33'.35 E |
|-------|-------------------|--------------|---------------|

Aus 777 [258/2014]

| | | | |
|-------|-------------------|-------------|--------------|
| Amend | light range to 4M | 33° 54'.4 S | 137° 33'.4 E |
|-------|-------------------|-------------|--------------|

Aus 778 [686/2014]

| | | | |
|-------|-------------------|-------------|--------------|
| Amend | light range to 4M | 33° 54'.4 S | 137° 33'.4 E |
|-------|-------------------|-------------|--------------|

1171* AUSTRALIA - VICTORIA - Port Phillip - River Yarra - Yarraville - Light
Victorian Notice 197/2014 (AA778594)

Aus 154 [1059/2014]

| | | | |
|-------|-------------------|--------------|---------------|
| Amend | light to F.R No42 | 37° 49'.40 S | 144° 54'.18 E |
|-------|-------------------|--------------|---------------|

1172* AUSTRALIA - VICTORIA - Port Phillip - Corio Bay - Point Lillas - Beacon
Parks Victoria Notice 195/2014 (AA778368)

Aus 157 [1058/2014]

| | | | |
|--------|--|---------------|----------------|
| Insert | south cardinal light beacon, Q(6)+LFl. 15s, with topmark | 38° 05'.806 S | 144° 26'.327 E |
|--------|--|---------------|----------------|

| | | | |
|--------|--------|--------------|---------------|
| Delete | beacon | 38° 05'.70 S | 144° 26'.35 E |
|--------|--------|--------------|---------------|

1173* AUSTRALIA - TASMANIA - D'Entrecasteaux Channel - South Port Bluff to Partridge Island - Port limit
A Boon (AA778635)

Aus 173 [1127/2014]

| | | | |
|--------|---|--------------|---------------|
| Insert | magenta dashed line, between | 43° 28'.68 S | 147° 00'.08 E |
| | | 43° 28'.61 S | 147° 00'.39 E |
| | magenta dashed line with legend, <i>Hobart Port Limit</i> , between | 43° 28'.58 S | 147° 00'.75 E |
| | | 43° 24'.57 S | 147° 06'.02 E |
| | magenta dashed line, between | 43° 24'.44 S | 147° 06'.15 E |
| | | 43° 24'.67 S | 147° 06'.31 E |

| | | | |
|--------|--|-------------|--------------|
| Delete | magenta dashed line, between | 43° 28'.8 S | 147° 00'.1 E |
| | | 43° 28'.6 S | 147° 00'.6 E |
| | magenta dashed line with legend, between | 43° 28'.5 S | 147° 00'.6 E |
| | | 43° 24'.8 S | 147° 05'.8 E |

Aus 174 (plan, Southport) [1127/2014]

| | | | |
|--------|---|---------------|----------------|
| Insert | magenta dashed line, between | 43° 28'.677 S | 147° 00'.078 E |
| | | 43° 28'.610 S | 147° 00'.387 E |
| | magenta dashed line with legend, <i>Hobart Port Limit</i> , between | 43° 28'.579 S | 147° 00'.745 E |
| | | 43° 27'.368 S | 147° 02'.333 E |

| | | | |
|--------|--|--------------|---------------|
| Delete | magenta dashed line, between | 43° 28'.78 S | 147° 00'.10 E |
| | | 43° 28'.63 S | 147° 00'.57 E |
| | magenta dashed line with legend, between | 43° 28'.50 S | 147° 00'.62 E |
| | | 43° 27'.69 S | 147° 02'.33 E |

Aus 795 [853/2014]

| | | | |
|--------|---|--------------|---------------|
| Insert | magenta dashed line with legend, <i>Hobart Port Limit</i> , between | 43° 28'.58 S | 147° 00'.75 E |
| | | 43° 24'.57 S | 147° 06'.02 E |

| | | | |
|--------|--|-------------|--------------|
| Delete | magenta dashed line with legend, between | 43° 28'.5 S | 147° 00'.6 E |
| | | 43° 24'.8 S | 147° 05'.8 E |

1174* AUSTRALIA - TASMANIA - Hells Gates - Nav aids

Tasmanian Ports Corporation (AA772799)

Aus 177 [1062/2014]

| | | | |
|-------|------------------------------------|-------------|--------------|
| Amend | light to <i>Fl. WRG. 3s 14m 2M</i> | 42° 13'.4 S | 145° 13'.3 E |
|-------|------------------------------------|-------------|--------------|

| | | | |
|--------|--|-------------|--------------|
| Delete | sector with legend, emanating from light | 42° 13'.4 S | 145° 13'.3 E |
|--------|--|-------------|--------------|

Aus 177 (plan, Hells Gates) [1062/2014]

| | | | |
|--------|--------------------|-------------|--------------|
| Insert | accompanying block | 42° 13'.0 S | 145° 13'.0 E |
|--------|--------------------|-------------|--------------|

| | | | |
|--------|------------------------------------|--------------|---------------|
| Delete | dashed line, between | 42° 12'.28 S | 145° 12'.64 E |
| | | 42° 11'.40 S | 145° 12'.08 E |
| | dashed line, between | 42° 12'.28 S | 145° 12'.70 E |
| | | 42° 11'.40 S | 145° 12'.19 E |
| | legend and dashed line, centred on | 42° 11'.51 S | 145° 12'.21 E |

Aus 792 [858/2014]

| | | | |
|-------|------------------------------------|-------------|--------------|
| Amend | light to <i>Fl. WRG. 3s 14m 2M</i> | 42° 13'.4 S | 145° 13'.3 E |
|-------|------------------------------------|-------------|--------------|

| | | | |
|--------|---|-------------|--------------|
| Delete | dashed and continuous line with legend Dir 156°, emanating from light | 42° 13'.4 S | 145° 13'.3 E |
|--------|---|-------------|--------------|

1175* AUSTRALIA - TASMANIA - Sandy Bay - Light buoy

Former Notice - 1154(T)/2014 is cancelled

Marine and Safety Tasmania Notice 123/2014 (AA779119, AA775793)

Aus 171 [1127/2014]

| | | | |
|--------|---|--------------|---------------|
| Insert | red cylindrical light buoy, <i>Fl. Y. 6s</i> , with spherical topmark | 42° 54'.00 S | 147° 20'.98 E |
|--------|---|--------------|---------------|

| | | | |
|--------|------------|-------------|--------------|
| Delete | light buoy | 42° 53'.9 S | 147° 20'.9 E |
|--------|------------|-------------|--------------|

Aus 172 [444/2014]

| | | | |
|--------|---|---------------|----------------|
| Insert | red cylindrical light buoy, <i>Fl. Y. 6s</i> , with spherical topmark | 42° 53'.995 S | 147° 20'.975 E |
|--------|---|---------------|----------------|

| | | | |
|--------|------------|--------------|---------------|
| Delete | light buoy | 42° 53'.90 S | 147° 20'.87 E |
|--------|------------|--------------|---------------|

1176(T)/2014 AUSTRALIA - NEW SOUTH WALES - Newcastle - Depth information

Former Notice - 1129(T)/2014 is cancelled
Newcastle Port Corporation (AA779910)

Available depths as at 3 December 2014:

| <i>Berth</i> | <i>Metres</i> | <i>Remarks</i> |
|---|---------------|------------------------------------|
| Eastern Basin 1 | 11.5 | |
| Eastern Basin 2 North of Ch 450 | 11.6 | |
| Eastern Basin 2 South of Ch 450 | 11.3 | |
| Western Basin 3 | 11.6 | |
| Western Basin 4 | 11.6 | |
| Channel Berth | 9.7 | |
| Dyke 1 | 12.8 | |
| Dyke 2 | 12.8 | |
| Dyke 4 | 16.4 | |
| Dyke 5 | 16.4 | |
| Dyke 6 | 5.3 | |
| Mayfield 4 Ch 27 to 266 | 12.8 | |
| BHP Wharf 6 to Ch 1050 | 7.3 | |
| Kooragang 2 | 11.6 | |
| Kooragang 2 North Dolphin Ch 182 to 243 | 11.6 | |
| Kooragang 2 South Dolphin Ch -92 to 00 | 11.4 | |
| Kooragang 3 Ch -40 to 00 | 13.1 | |
| Kooragang 3 Ch 00 to 220 | 13.3 | |
| * Kooragang 4 | 16.2 | |
| Kooragang 5 | 16.5 | |
| Kooragang 6 | 16.3 | |
| * Kooragang 7 | 16.5 | |
| Kooragang 8 | 16.4 | |
| Kooragang 9 | 16.4 | |
| Kooragang 10 | 16.4 | |
| Throsby 1 Ch 850 to 1030 | 8.9 | |
| Carrington Wharf | | To be sounded as and when required |
| Foreshore Park Berth | 5.9 | |
| Elgo Wharf | | To be sounded as and when required |
| <i>Channels</i> | | |
| Entrance Approach | 17.7 | |
| Entrance Channel (18.0m) | 17.8 | |
| Entrance Channel (17.4m) | 17.4 | |
| Entrance Channel (16.8m) | 16.8 | |
| Entrance Channel (16.2m) | 16.2 | |
| Entrance Channel to Horseshoe | 15.2 | |
| * Horseshoe | 15.0 | |
| Steelworks Channel to Swinging Basin | 15.2 | |
| Swinging Basin | 15.2 | |
| Hunter River South Arm (Kooragang 6 to buoy 16) | 15.2 | |
| Hunter River South Arm (buoy 16 to buoy 20) | 15.2 | |
| Basin Cutting | 12.6 | |
| Basin Area to Eastern & Western Basin Berths | 12.3 | |
| Basin Area to Throsby 1 | 9.2 | |
| Stockton Crossing | 3.6 | |
| * Indicates new or revised entry. | | |

Chart temporarily affected - Aus 207 - Aus 208**1177(T)/2014 AUSTRALIA - NEW SOUTH WALES - Newcastle - Live firing completed**

Former Notice - 1065(T)/2014 is cancelled
Department of Defence (AA774108)

Cancel this notice on receipt.

Chart formerly affected - Aus 219 - Aus 489 - Aus 809 - Aus 810 - Aus 811 - Aus 812 - Aus 4643 (INT 643) - AX 00809S

1178(T)/2014 AUSTRALIA - QUEENSLAND - Airlie Beach - Light buoys

Maritime Safety Queensland Notice 683(T)/2014 (AA779530)

Special light buoys, *Fl. Y. 2-5s*, marking the edge of the dredge channel exist as follows:

20° 16'.31 S 148° 43'.63 E

20° 16'.27 S 148° 43'.63 E

Chart temporarily affected - Aus 268

1179(T)/2014 AUSTRALIA - QUEENSLAND - Brisbane River - Hamilton Reach - Harbour works

Former Notice - 1131(T)/2014 is cancelled

Maritime Safety Queensland Notice 669(T)/2014 (AA778621)

Piling operations are in progress in the vicinity of position 27° 26'.40 S 153° 03'.63 E.

The barge *Kochi* and support vessels are on site and will monitor VHF Ch 12 and Ch 16.

The works area and all hazards to navigation will be marked by special light buoys.

Mariners are advised to navigate with caution in the area.

Chart temporarily affected - Aus 238

1180(T)/2014 AUSTRALIA - QUEENSLAND - Hay Point - Mooring removal

Date - Until 16 January 2015

Maritime Safety Queensland NTM 675(T)/2044 (AA778813)

Works are in progress to remove moorings in an area bounded by the following positions:

21° 21'.03 S 149° 21'.64 E

21° 19'.28 S 149° 23'.33 E

21° 19'.92 S 149° 24'.00 E

21° 21'.58 S 149° 22'.24 E.

All vessels will display appropriate shapes and will monitor VHF Ch 10 and Ch 16.

Mariners are advised to navigate with caution in the area.

Chart temporarily affected - Aus 249 - Aus 823 - AX 00249S - AX 00823S

1181(T)/2014 AUSTRALIA - QUEENSLAND - Heskett Rock - Light beacon removed

Former Notice - 318(T)/2010 is cancelled

Maritime Safety Queensland (AA778360)

Cancel this notice on receipt.

Chart formerly affected - Aus 251 - Aus 823 - Aus 824 - AX 0823E

1182(T)/2014 AUSTRALIA - QUEENSLAND - Hinchinbrook Channel - Light buoy withdrawn

Maritime Safety Queensland Notice 678(T)/2014 (AA779328)

No17 starboard lateral light buoy, *Fl. G. 2-5s* (18° 30'.05 S 146° 18'.65 E), has been temporarily withdrawn.

Chart temporarily affected - Aus 259 - Aus 267

1183(T)/2014 AUSTRALIA - QUEENSLAND - Moreton Bay - Brisbane River - Depth information

Former Notice - 1135(T)/2014 is cancelled
Brisbane Port Corporation (AA779789)

Available depths and under keel clearances (UKC) at 3 December 2014:

| <i>Berth</i> | <i>Metres</i> | <i>Remarks</i> |
|--------------------------------------|---------------|------------------------------------|
| * Fisherman Islands No12 | 14.1 | |
| Fisherman Islands No11 | 14.0 | |
| * Fisherman Islands No10 | 14.0 | |
| * Fisherman Islands No9 | 14.1 | |
| * Fisherman Islands No8 | 13.8 | |
| * Fisherman Islands No7 | 13.7 | |
| * Fisherman Islands No6 | 14.0 | |
| Fisherman Islands No5 | 14.1 | |
| * Fisherman Islands No4 | 14.0 | |
| Fisherman Islands No3 | 13.9 | |
| Fisherman Islands No2 | 14.1 | |
| Fisherman Islands No1 | 14.2 | |
| Fisherman Islands Grain and Woodchip | 13.0 | |
| * Caltex Fisherman Islands | 14.1 | |
| * Fisherman Islands Coal | 13.7 | |
| Fisherman Islands General Purpose | 11.5 | |
| * Luggage Point Pump Out Facility | 12.3 | |
| * BP Luggage Point | 13.6 | |
| Caltex Products | 10.3 | |
| Cement Australia Co Wharf | 9.7 | |
| * BP Products | 10.8 | |
| * Viva Energy | 10.5 | |
| Graincorp Liquid Terminal | 10.3 | |
| * Incitec North | 9.9 | |
| * Incitec South | 10.0 | |
| Pinkenba 1 | 10.4 | |
| Pinkenba 2 | 10.4 | |
| Riverside Marina | - | |
| Sugar Terminal | 9.8 | |
| Cairncross Fitting Out Wharf | 7.1 | |
| Cairncross Breasting Wharf | 4.4 | |
| Brisbane Naval Wharf | 4.3 | |
| * Maritime No1 | 8.8 | |
| * Hamilton No4 | 10.0 | |
| Hamilton No1 | 8.8 | |
| Brisbane Cruise Ship Terminal | 9.0 | |
| | <i>Metres</i> | <i>UKC/Remarks</i> |
| <i>Moreton Bay:</i> | | |
| North West Channel | 15.0 | 2.3 (280m width) |
| North West Bypass Channel | 9.2 | 1.6 |
| Spitfire Channel | 15.0 | 1.5 (600m width) |
| East Knoll Bypass Channel | 6.0 | 1.4 |
| East Channel | 15.0 | 1.5 (300m width from western side) |
| Main Channel (M8 - M9) | 10.0 | 1.8 |
| Entrance Channel (E5 - EBCN) | 14.7 | 1.5 |
| <i>Brisbane River:</i> | | |
| Outer Bar Cutting | 14.0 | 1.46 |
| * Inner Bar Cutting | 13.8 | 1.46 |
| Fisherman Islands Swing Basin | 14.0 | 1.3 |
| Fisherman Islands Swing Basin (11.5) | 11.5 | 0.6 |
| River | 9.1 | 0.6 / 0.9 (draft/tide) |
| Cement Australia Swing Basin | 9.1 | 0.6 / 0.9 (draft/tide) |
| Pinkenba Swing Basin | 9.1 | 0.6 / 0.9 (draft/tide) |
| Hamilton Swing Basin | 9.1 | 0.6 / 0.9 (draft/tide) |
| * Indicates new or revised entry. | | |

Chart temporarily affected - Aus 235 - Aus 236 - Aus 237 - Aus 238 - Aus 814 - Aus 815

1184(T)/2014 AUSTRALIA - QUEENSLAND - Moreton Bay - Spitfire Channel to North West Channel - Scientific instruments

Former Notice - 1134(T)/2014 is cancelled

Date - Until 31 January 2015

Maritime Safety Queensland Notice 686(T)/2014 (AA779690)

Subsurface scientific instruments exist on the seabed in the following positions:

26° 53'.92 S 153° 11'.23 E

26° 54'.35 S 153° 11'.25 E

26° 54'.58 S 153° 11'.15 E

27° 02'.35 S 153° 15'.00 E

27° 03'.02 S 153° 16'.30 E

27° 03'.22 S 153° 16'.02 E.

Chart temporarily affected - Aus 235 - Aus 236 - Aus 814 - Aus 815

1185(P)/2014 AUSTRALIA - QUEENSLAND - Prince of Wales Channel - OG Rock - Virtual AIS

Australian Maritime Safety Authority (AA779958)

A special virtual AIS will be established in position 10° 29'.87 S 142° 20'.75 E.

Chart which will be affected - Aus 292 - Aus 293

1186(T)/2014 AUSTRALIA - QUEENSLAND - Schooner Rock - Light beacon

Former Notice - 346(T)/2014 is cancelled

Maritime Safety Queensland Notice 657(T)/2014 (AA777092, AA777766)

Cancel this notice on receipt.

Chart formerly affected - Aus 251 - Aus 824

1187(T)/2014 AUSTRALIA - QUEENSLAND - Shoalwater Bay - Live firing; military flying completed

Former Notice - 1136(T)/2014 is cancelled

Maritime Safety Queensland Notices 632(T)/2014, 661(T)/2014 (AA775135, AA777621)

Cancel this notice on receipt.

Chart formerly affected - Aus 260 - Aus 261 - Aus 820 - Aus 822 - AX 00260T - AX 00260S - AX 00820S - AX 00822S

1188(T)/2014 AUSTRALIA - QUEENSLAND - Thursday Island - Light unlit; light beacon unlit

Maritime Safety Queensland Notice 687(T)/2014 (AA779754)

The light, *F.WRG* (10° 34'.70 S 142° 12'.46 E), is unlit.

The light beacon, *Q.Y & F.I.G.2-5s* (10° 35'.71 S 142° 13'.23 E), is unlit.

Chart temporarily affected - Aus 293 - Aus 299

1189(T)/2014 PAPUA NEW GUINEA - Cape Sueusat - Light restored

Former Notice - 771(T)/2013 is cancelled

National Maritime Safety Authority PNG (AA778423)

Cancel this notice on receipt.

Chart formerly affected - Aus 392 - Aus 393 - Aus 543 - Aus 666

1190(T)/2014 PAPUA NEW GUINEA - Madang Harbour - Biliau Island - Light unlit

National Maritime Safety Authority PNG Notice 36/2014 (AA780029)

The light, *Oc.4s 15m 7M* (5° 12'.18 S 145° 48'.33 E), is unlit.

Chart temporarily affected - Aus 646

1191(T)/2014 PAPUA NEW GUINEA - Unei Island - Light unlit

National Maritime Safety Authority PNG (AA778423)

The light, *Fl(4)16s 6m 9M* (3° 22'.69 S 143° 24'.58 E), is unlit.**Chart temporarily affected - Aus 389 - Aus 651 - Aus 4622 (INT 622)****1192(T)/2014 AUSTRALIA - NORTHERN TERRITORY - Darwin - Hudson Creek - Light beacon unlit**

Darwin Port Corporation Notice 145(T)/2014 (AA777079, AA777761)

The starboard lateral light beacon, *Q.G.2m 2M* (12° 29'.29 S 130° 55'.48 E), is unlit.**Chart temporarily affected - Aus 26 - Aus 28 - AX 00026T****1193(T)/2014 AUSTRALIA - NORTHERN TERRITORY - East Vernon Island - Obstruction**

Department of Transport NT (AA777840)

An obstruction exists in position 12° 04'.07 S 131° 03'.48 E.

Chart temporarily affected - Aus 20**1194(T)/2014 AUSTRALIA - WESTERN AUSTRALIA - Barrow Island - Scientific instruments northwestwards***Date* - Until 30 November 2015

MetOcean Engineers (AA778914)

Scientific instruments exist as follows:

| <i>Position</i> | <i>Remarks</i> |
|----------------------------|--|
| 19° 47'.21 S 114° 34'.76 E | subsurface |
| 20° 25'.19 S 114° 55'.77 E | special pillar light buoy, Q(5)Y.20s |
| 20° 25'.67 S 114° 55'.51 E | orange spherical light buoy, Q(5)Y.20s |
| 20° 26'.17 S 114° 55'.20 E | subsurface |

Chart temporarily affected - Aus 328**1195(T)/2014 AUSTRALIA - WESTERN AUSTRALIA - Browse Island - Drill rig southeastwards moved***Former Notice* - 1088(T)/2014 is cancelledMODU *Stena Clyde* (AA778542)

Cancel this notice on receipt.

Chart formerly affected - Aus 320 - Aus 4721 (INT 721) - Aus 4722 (INT 722) - AX 04721U - AX 04722U**1196(T)/2014 AUSTRALIA - WESTERN AUSTRALIA - Browse Island - Well and pipeline operations northwestwards completed***Former Notice* - 1085(T)/2014 is cancelled

Australian Maritime Safety Authority Auscoast Warning 251/14 (AA779541)

Cancel this notice on receipt.

Chart formerly affected - Aus 319 - Aus 320 - AX 00319U

1197(T)/2014 AUSTRALIA - WESTERN AUSTRALIA - Pelsaert Bank - Mooring buoys*Date* - Until 28 April 2015

Murphy Australia Oil Pty Ltd (AA779590, AA779592, AA779593)

8 lit orange mooring buoys exist in the following positions:

29° 05'.31 S 114° 16'.57 E
 29° 05'.53 S 114° 16'.35 E
 29° 05'.54 S 114° 16'.70 E
 29° 05'.58 S 114° 16'.50 E
 29° 50'.97 S 114° 30'.38 E
 29° 51'.15 S 114° 30'.57 E
 29° 51'.30 S 114° 30'.27 E
 29° 51'.40 S 114° 29'.82 E.

Chart temporarily affected - Aus 332 - Aus 333 - Aus 752 - Aus 753**1198(T)/2014 AUSTRALIA - WESTERN AUSTRALIA - Port Hedland - Depth information***Former Notice* - 1068(T)/2013 is cancelled

Pilbara Ports Authority Notice 79/2014 (AA778365)

Available depths as at 19 November 2014:

| <i>Berth</i> | <i>Metres</i> |
|--|---------------|
| * PHPA berth 1 | 13.1 |
| * PHPA berth 2 | 13.1 |
| PHPA berth 3 | 13.5 |
| * PHPA berth 4 (Utah Point) | 14.6 |
| BHP Billiton Nelson Point berth A | 19.2 |
| BHP Billiton Nelson Point berth B | 19.0 |
| BHP Billiton Nelson Point berth C | 19.1 |
| BHP Billiton Nelson Point berth D | 19.0 |
| BHP Billiton Finucane Island berth A | 19.2 |
| * BHP Billiton Finucane Island berth B | 19.2 |
| * BHP Billiton Finucane Island berth C | 18.4 |
| * BHP Billiton Finucane Island berth D | 19.2 |
| * Anderson Point berth 1 | 19.8 |
| Anderson Point berth 2 | 19.7 |
| Anderson Point berth 3 | 19.8 |
| * Anderson Point berth 4 | 19.6 |
| * Indicates new or revised entry. | |

Chart temporarily affected - Aus 52 - Aus 54**1199(T)/2014 AUSTRALIA - WESTERN AUSTRALIA - Rowley Shoals - Drilling operations northwards***Former Notice* - 1036(T)/2014 is cancelled*Date* - Until 17 March 2015Woodside Energy Ltd (AA778998), MODU *Deepwater Millennium* (AA779220)MODU *Deepwater Millennium* is conducting drilling operations in position 16° 37'.07 S 119° 12'.86 E.**Chart temporarily affected - Aus 4722 (INT 722) - AX 04722U**

1200(T)/2014 AUSTRALIA - WESTERN AUSTRALIA - West Reef to Fly Island - Scientific instruments

Former Notice - 985(T)/2014 is cancelled

Date - Until 28 February 2016

Department of Transport WA Notice 183/2014 (AA778591)

Scientific instruments marked by special spar light buoys, *Fl. Y. 6s*, exist in the following positions:

21° 19'.66 S 115° 23'.45 E
 21° 19'.66 S 115° 09'.50 E
 21° 26'.31 S 114° 54'.14 E
 21° 26'.63 S 115° 10'.98 E
 21° 27'.04 S 115° 02'.00 E
 21° 28'.93 S 115° 01'.54 E
 21° 30'.02 S 114° 50'.23 E
 21° 30'.16 S 114° 55'.44 E
 21° 31'.73 S 114° 46'.25 E
 21° 33'.85 S 115° 00'.45 E
 21° 34'.15 S 115° 03'.42 E
 21° 34'.69 S 114° 54'.30 E
 21° 35'.20 S 114° 56'.38 E
 21° 36'.48 S 115° 04'.31 E
 21° 37'.84 S 114° 41'.51 E
 21° 43'.17 S 114° 46'.17 E.

Chart temporarily affected - Aus 64 - Aus 743 - Aus 744

1201(T)/2014 AUSTRALIA - SOUTH AUSTRALIA - North Haven - Shoaling

Department of Planning, Transport and Infrastructure SA Notice 45/2014 (AA779953)

Shoaling exists within the entrance to the marina (34° 47'.71 S 138° 28'.91 E).

Mariners are advised to navigate with caution in the area.

Chart temporarily affected - Aus 137

1202(T)/2014 AUSTRALIA - SOUTH AUSTRALIA - Port Lincoln - Aqua park

Date - Until 27 April 2015

Air Watersports Pty Ltd (AA771153, AA778807)

An aqua park exists in an area bounded by the following positions marked by special light buoys, *Fl. Y.*:

34° 43'.17 S 135° 51'.59 E
 34° 43'.19 S 135° 51'.62 E
 34° 43'.16 S 135° 51'.64 E
 34° 43'.15 S 135° 51'.61 E.

Mariners are advised to navigate with caution in the area.

Chart temporarily affected - Aus 133

1203(T)/2014 AUSTRALIA - SOUTH AUSTRALIA - Yatala Channel - Shoaling

South Australia Notice 44/2014 (AA778362)

Shoaling with a least depth of 7.8m exists in the channel for a width of 40m along the NW edge, between beacon 12 (32° 11'.18 S 133° 37'.58 E) and beacon 16 (32° 10'.99 S 133° 37'.88 E).

Mariners are advised to navigate with caution in the area.

Chart temporarily affected - Aus 122

1204(T)/2014 SOUTHERN OCEAN - Great Australian Bight - Seismic survey

Date - Until 30 June 2015

Dolphin Geophysical Pte Ltd (AA778758), TGS (AA778931)

Survey vessels *Sanco Sword* and *Sanco Swift*, with a 8500m towed array, and support vessels *Sunrise-G*, *7 Waves*, *Limitless* and *Rig Andromeda* are conducting a survey in the area bounded by the following positions:

35° 47'.17 S 132° 53'.39 E
 35° 43'.97 S 132° 05'.25 E
 35° 14'.91 S 131° 27'.68 E
 34° 59'.39 S 131° 34'.16 E
 34° 27'.79 S 130° 54'.17 E
 33° 59'.87 S 130° 54'.16 E
 33° 59'.74 S 131° 09'.97 E
 33° 50'.48 S 131° 10'.03 E
 33° 50'.60 S 131° 39'.02 E
 35° 01'.09 S 133° 09'.97 E.

Chart temporarily affected - Aus 4727 (INT 727)**1205(T)/2014 AUSTRALIA - TASMANIA - Devonport - Shoaling**

HydroSurvey Australia (DHDB 2738485)

Shoaling exists in the Devonport entrance channel and berths:

| <i>Location</i> | <i>Least depth (metres)</i> | <i>Position</i> |
|------------------|-----------------------------|----------------------------|
| Entrance Channel | 8.2 | 41° 09'.91 S 146° 22'.16 E |
| Entrance Channel | 9.1 | 41° 10'.08 S 146° 22'.09 E |
| Entrance Channel | 8.7 | 41° 10'.45 S 146° 21'.84 E |
| Entrance Channel | 8.3 | 41° 10'.51 S 146° 21'.91 E |
| Berth 1W | 8.1 | 41° 10'.96 S 146° 21'.82 E |
| Swing Basin | 7.1 | 41° 11'.12 S 146° 21'.82 E |
| Berth 3E | 7.0 | 41° 11'.07 S 146° 22'.00 E |
| Berth 4W | 8.3 | 41° 11'.19 S 146° 21'.82 E |
| Berth 2E | 8.0 | 41° 10'.93 S 146° 21'.98 E |

Chart temporarily affected - Aus 164

HYDROGRAPHIC REPORTS

| <i>Locality</i> | <i>Report</i> | <i>Ship/Authority</i> | <i>Observer</i> |
|---------------------------------|---------------|-----------------------|-----------------|
| TAS- D'Entrecasteaux Channel | Port limit | | A Boon |

NAVIGATION WARNINGS

The following radio messages have been received during the period to 4 December 2014. Signal copies of these messages may be destroyed. It is recommended that the reprint of Navigational Warnings should be kept in a file or a book divided into areas. Cancellation should be made on receipt of signals and reprints.

Rigs on location other than those listed in the latest Section III summary are the subject of Radio Navigational Warnings. Rigs in transit will not be the subject of Warnings.

AUSCOAST WARNING

269 Cancelled.
 270 Cancelled.
 271 Cancelled.
 272 Cancelled.
 273 Cancelled.
 274 Cancelled.
 275 Cancelled.
 276 Cancelled.
 277 Cancelled.
 278 Drill rig *Deepwater Millennium* in position 16° 37'.04 S 119° 12'.51 E. 2M clearance requested.
 279 Cancelled.
 280 Cancelled.

NAVAREA X WARNINGS

074 Cancelled.
 075 Cancelled.
 076 Cancelled.
 077 Cancelled.

Navigational warnings in force as at 040001UTC DEC 14.

Auscoast

2014 231 239 243 247 255 257 258 262 263 268 278

Navarea X

2014 073

Summary of mobile drilling rigs as at 040001UTC DEC 14.

| <i>Name</i> | <i>Position</i> |
|-----------------------|----------------------------|
| Nan Hai 6 | 09° 47'.74 S 130° 13'.68 E |
| Transocean Legend | 11° 06'.11 S 126° 45'.09 E |
| Jack Bates | 10° 38'.61 S 126° 11'.02 E |
| Noble Clyde Boudreaux | 13° 49'.00 S 123° 19'.35 E |
| Deepwater Millennium | 16° 37'.04 S 119° 12'.51 E |
| Atwood Osprey | 19° 56'.70 S 115° 19'.50 E |
| Atwood Eagle | 19° 58'.22 S 115° 12'.76 E |
| Ocean America | 20° 07'.54 S 113° 17'.10 E |
| Deepwater Frontier | 19° 48'.59 S 114° 33'.57 E |
| Atwood Falcon | 21° 20'.95 S 114° 04'.40 E |

NAVAREA XIV WARNINGS

Nil.

Navarea XIV warnings in force as at 040001UTC DEC 14.

2014 085

Further information or advice on MASTREP procedures

22. Further information or advice on MASTREP is available in the MASTREP and Australian Mandatory Reporting Guide. Copies of this guide may be obtained free of charge from:

(a) AMSA – JRCC Australia

Telephone +61 (0)2 6230 6811 or free call 1800 641 792

Facsimile +61 (0)2 6230 6868 or free call 1800 622 153

Postal Address GPO Box 2181
Canberra ACT 2601
Australia

(b) Website www.amsa.gov.au

(c) AMSA offices in major ports

(AA637472)

4B. HF AND VHF MARINE RADIO SERVICES FOR SMALL CRAFT

1. HF distress and safety services are provided for non-SOLAS vessels through Limited Coast Radio Stations (LCRS) and Maritime Rescue Stations (MRS) in the Inshore Boating Radio Service. Navigation warnings will be broadcast twice daily and at other times if of an urgent nature. For broadcast areas see AUSCOAST Sea Area (ASA) Map (see page 28).

LIMITED COAST RADIO STATION FACILITIES AND FREQUENCIES

| <i>Coast Radio Station</i> | <i>Callsign</i> | <i>Radiotelephone frequencies monitored</i> | <i>Navigation Warnings</i> | <i>Broadcast Times</i> | <i>AUSCOAST Area</i> |
|----------------------------|--------------------------|---|----------------------------|-------------------------------|----------------------|
| Sydney | Charleville Radio | 4125, 6215, 8291 kHz and VHF Ch.16 | 8176 kHz and VHF Ch.67 | 1025 2325 EST (0025 1325 UTC) | B, C, D |
| Gladstone | Coast Radio Gladstone | 4125, 6215, 8291 kHz and VHF Ch.16 | 8176 kHz and VHF Ch.67 | 0825 2125 EST (2225 1125 UTC) | A, B, C |
| Cairns | Coast Radio Cairns | 4125, 6215, 8291 kHz and VHF Ch.16 | 8176 kHz and VHF Ch.67 | 0925 2225 EST (2325 1225 UTC) | H, A, B |
| Darwin | Coast Radio Darwin | 4125, 6215, 8291 kHz and VHF Ch.16 | 8176 kHz and VHF Ch.67 | 1055 1855 CST (0125 0925 UTC) | G, H, A |
| Port Hedland | Coast Radio Port Hedland | 4125, 6215, 8291 kHz and VHF Ch.16 | 8176 kHz and VHF Ch.67 | 1225 1625 WST (0425 0825 UTC) | F, G, H |
| Perth | Coast Radio Perth | 4125, 6215, 8291 kHz and VHF Ch.16 | 8176 kHz and VHF Ch.67 | 1425 1825 WST (0625 1025 UTC) | E, F, G |
| Adelaide | Charleville Radio | 4125, 6215, 8291 kHz and VHF Ch.16 | 8176 kHz and VHF Ch.67 | 1255 1655 CST (0325 1225 UTC) | D, E, F |
| Melbourne | Charleville Radio | 4125, 6215, 8291 kHz and VHF Ch.16 | 8176 kHz and VHF Ch.67 | 0725 1225 EST (0225 2125 UTC) | C, D, E |
| Hobart | Coast Radio Hobart | 4125, 6215, 8291 kHz and VHF Ch.16 | 8176 kHz and VHF Ch.67 | 1525 EST (0525 UTC) | C, D, E |

2. Certain areas will be monitored for VHF Ch 16 from 0600 to 1800 LT by AVCG/VMR/RVCP groups. In Queensland, Brisbane Harbour Control and Hay Point Reef Centre will monitor this frequency from 1800 to 0600. This night time service is an emergency watch only.

Australian Bureau of Meteorology.

(AA778485,AA779807)

| Satellite | Forecast type | Areas | Times (UTC) |
|----------------------|----------------|---|---|
| Pacific Ocean Region | High Seas | North Eastern, South Eastern, Western, Northern | 1100, 2300 |
| Pacific Ocean Region | Coastal Waters | Bass Strait, Northern Territory (Cape Fourcroy to NT - QLD border) | 0700 ¹ , 1910 ¹ 2015, 0815 |
| Indian Ocean Region | High Seas | Western | 1030, 2330 |
| Indian Ocean Region | Coastal Waters | Western Australia , Northern Territory (WA-NT border to Cape Fourcroy) | 2030, 0830 |

Note: 1. One hour earlier during Australian Eastern Daylight saving Time - see Chapter 1 - Time Zones.

9.2.4 Weapons Practice Warnings

- Details of Military Practice Areas procedures are outlined in Ch.8.
- Limits and coordinates of Restricted and Dangerous Areas are published in Australian Annual Notices to Mariners No 9.
- As clear range procedures are conducted by range managers, no broadcast warnings will be issued in respect of weapons firing practices in the areas depicted in Notices to Mariners No 9.
- Major exercises will be the subject of special warnings. Vessels approaching weapons practice areas are requested to maintain a radio listening watch (see Ch.11 – Military Information).
- The International SafetyNET service Inmarsat C transmissions which cover all the waters of the globe, with the exception of Polar Regions.
- Although there is some duplication to allow a vessel to change from one system to another, the majority of messages will only be broadcast on one system. Australia has indicated that coastal and high seas MSI will be broadcast via SafetyNET. NAVTEX is a coastal MF broadcast system and is not appropriate for use in GMDSS Area A3.
- In Australia, in addition to Inmarsat C SafetyNET, MSI is broadcast by two other radio systems, via:
 - HF Maritime Communications Stations
 - HF and VHF Coastal Radio Stations (Limited and Volunteer).

9.2.5 Notices to Mariners

- Up-to-date and navigational critical information is published in the Australian Notices to Mariners (NtM), which is used to maintain nautical charts and publications (see Ch.13).

9.3 Maritime Safety Information Service

- The MSI service is an internationally coordinated network of radio broadcasts containing information which is necessary for safe navigation. Two systems are used to broadcast MSI. Ships must be able to receive the MSI broadcasts for the area in which they are operating. These requirements are set out in the *International Convention for the Safety of Life at Sea (SOLAS) 1974*.
- GMDSS supports the receipt of MSI by:
 - The international NAVTEX service MF transmissions in coastal areas (but not provided in Australia)

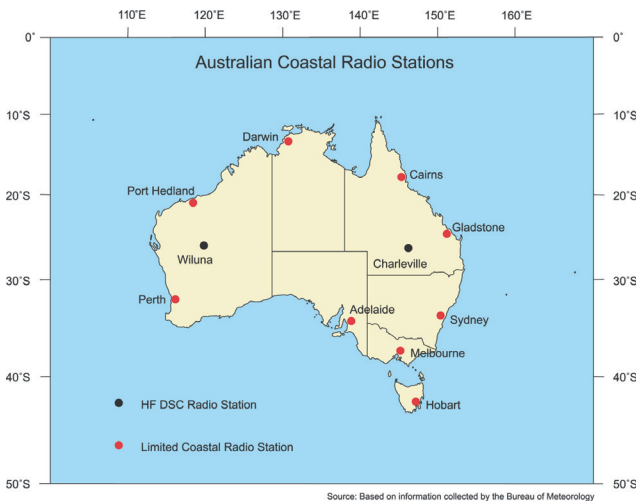
9.3.1 Maritime Communications Stations

- Maritime Communications Stations provide:
 - search and rescue services in conjunction with RCC Australia
 - automatic weather forecasts for the high seas and coastal waters
 - a continuous automated watch for HF DSC distress, urgency and safety calls.
- RCC Australia transmits MSI via SafetyNET on Inmarsat C. The BOM transmits weather related MSI via MF/HF radiofacsimile, HF radiotelephony and Inmarsat C (SafetyNET).

9.3.2 Limited Coastal Radio Stations

- 1. Limited Coastal Radio Stations provide:
 - safety communications services for small craft
 - twice daily navigation warnings
 - urgent navigation warnings as required.
- 2. There are 9 Government administered, Limited Coast Radio Stations which continuously monitor the HF voice channels on 4125, 6215 and 8 291 kHz for distress and safety, and broadcast navigation warnings. Charleville Radio also monitors 12290 kHz from 0730-1930 EST (0700-1900 CST). Navigation warnings are broadcast on 8176 kHz. They also conduct a listening watch on marine VHF Channels 16 and 67 (see table below).
- 3. Volunteer Coast Radio Stations are run by bodies such as volunteer marine rescue services and clubs. They operate mainly on VHF and 27 MHz with some also monitoring 2182 kHz and some HF frequencies. Transmission times can vary. Further information can be obtained from the Australian Volunteer Coast Guard Association website.

| | |
|----------|--|
| Website: | www.coastguard.com.au |
|----------|--|



9.3.3 NAVTEX

- 1. Due to Australia’s long coastline and the limited range of NAVTEX, Australia does not operate a NAVTEX service. A complete list of NAVTEX stations can be found in *Admiralty List of Radio Signals (ALRS) Volumes 3 and 5*.

| Limited Coastal Radio Station | Callsign | Navigation warnings | Broadcast Time | Further Information |
|-------------------------------|--|---------------------|----------------|--|
| Adelaide | Charleville Radio (formerly “Coast Radio Adelaide”) | 8176 kHz | 1255, 1655 CST | www.transport.sa.gov.au |
| Cairns | Coast Radio Cairns | 8176 kHz | 0925, 2225 EST | www.msq.qld.gov.au |
| Darwin | Coast Radio Darwin | 8176 kHz | 1055, 1855 CST | www.nt.gov.au |
| Gladstone | Coast Radio Gladstone | 8176 kHz | 0825, 2125 EST | www.msq.qld.gov.au |
| Hobart | Coast Radio Hobart | 8176 kHz | 1525 EST | www.mast.tas.gov.au |
| Melbourne | Charleville Radio (formerly “Coast Radio Melbourne”) | 8176 kHz | 0725, 1225 EST | www.marinesafety.vic.gov.au |
| Perth | Coast Radio Perth | 8176 kHz | 1425, 1825 WST | www.transport.wa.gov.au |
| Port Hedland | Coast Radio Port Hedland | 8176 kHz | 1225, 1625 WST | www.transport.wa.gov.au |
| Sydney | Charleville Radio (formerly “Coast Radio Sydney”) | 8176 kHz | 1025, 2325 EST | www.maritime.nsw.gov.au |

9.3.4 SafetyNET

1. SafetyNET is an international safety service, which allows authorised MSI providers, such as meteorological offices, hydrographic offices and RCC's to broadcast messages to all ships in certain geographical areas.
2. The SafetyNET service is available through the Inmarsat C system. This system has a special capability known as Enhanced Group Calling (EGC), which enables authorised information providers to broadcast messages to selected groups of ships.
3. To receive scheduled navigational warnings for a particular area the terminal must be logged into the correct ocean region Network Coordination Station. The terminal must be programmed with the vessel's current location and the NAVAREA (not stations) and message types that are required. Australia is in NAVAREA X. Coastal areas A to H are used around the Australian mainland. Once the terminal is programmed, the service is automatic and is free of charge.
4. Navigational Warnings and Meteorological Information issued by RCC Australia and the BOM are promulgated using SafetyNET via the POR and IOR satellites. NAVAREA X and AUSCOAST warnings are issued immediately on receipt of the information, and then repeated at the scheduled times of 0700 and 1900 UTC. A scheduled broadcast may not occur at precisely these times, so it is recommended that the terminal remains correctly configured until at least 40 minutes after the scheduled time. Full details of the SafetyNET service can be found in *ALRS Volume 5*.

9.4 Meteorological Broadcasts

1. The BOM provides meteorological forecasts, warnings and observations and these are transmitted to mariners by various means, including HF voice and facsimile, VHF voice, telephone voice and facsimile, Inmarsat C and through media outlets. Marine Weather information can be found on the Bureau's website.

| | |
|----------|--|
| Website: | www.bom.gov.au |
|----------|--|

9.4.1 Marine Radio - Voice

1. The BOM broadcasts marine weather radio services for high seas and Australian coastal waters from the two HF transmitters located at Charleville, Queensland (call sign VMC "Australian Weather East") and at Wiluna, Western Australia (call sign VMW "Australian Weather West"). Voice services provide bulletins of warnings (repeated every hour) and forecasts (repeated every 4 hours). The full voice schedule is available at the following website.

| | |
|----------|--|
| Website: | www.bom.gov.au/marine |
|----------|--|

Charleville (VMC) broadcast schedule

2. Marine weather warnings are broadcast on the hour (on the half-hour in CST) for Qld, NSW, Vic and Tas coastal waters zones and for Northern, Northeast and Southeast high seas areas. The broadcast is available on the following frequencies (kHz):
 - Day-time (0700 – 1800 EST): 4426, 8176, 12365, 16546
 - Night-time (1800 – 0700 EST): 2201, 6507, 8176, 12365
3. Navigation Maritime Safety Information notices are broadcast at 25 past each hour.
4. Marine forecasts and observations are broadcast from Charleville (VMC) on a four hour repeat cycle according to the following schedule.

Wiluna (VMW) broadcast schedule

5. Marine weather warnings are broadcast on the hour (on the half-hour in CST) for Qld Gulf, NT, WA and SA coastal waters zones and for Northern and Western high seas areas. The broadcast is available on the following frequencies (kHz):
 - Day-time (0700 – 1800 WST): 4149, 8113, 12362, 16528
 - Night-time (1800 – 0700 WST): 2056, 6230, 8113, 12362
6. Navigation Maritime Safety Information notices are broadcast at 25 past each hour.
7. Marine forecasts and observations are broadcast from Wiluna (VMW) on a four hour repeat cycle according to the following schedule.

| Charleville Broadcast Time | | | | Frequencies (kHz) | Forecasts |
|----------------------------|------|------|------|-------------------|---------------------------------------|
| EST* | CST* | WST | UTC | 4426 | |
| 0730 | 0700 | 0530 | 2130 | 8176 | Queensland |
| 0830 | 0800 | 0630 | 2230 | 12365 | High Seas (Northern, NE and SE areas) |
| 0930 | 0900 | 0730 | 2330 | 16546 | New South Wales & Victoria |
| 1030 | 1000 | 0830 | 0030 | | Tasmania |
| 1130 | 1100 | 0930 | 0130 | | Queensland |
| 1230 | 1200 | 1030 | 0230 | | High Seas (Northern, NE and SE areas) |
| 1330 | 1300 | 1130 | 0330 | | New South Wales & Victoria |
| 1430 | 1400 | 1230 | 0430 | | Tasmania |
| 1530 | 1500 | 1330 | 0530 | | Queensland |
| 1630 | 1600 | 1430 | 0630 | | High Seas (Northern, NE and SE areas) |
| 1730 | 1700 | 1530 | 0730 | | New South Wales & Victoria |
| 1830 | 1800 | 1630 | 0830 | 2201 | Tasmania |
| 1930 | 1900 | 1730 | 0930 | 6507 | Queensland |
| 2030 | 2000 | 1830 | 1030 | 8176 | High Seas (Northern, NE and SE areas) |
| 2130 | 2100 | 1930 | 1130 | 12365 | New South Wales & Victoria |
| 2230 | 2200 | 2030 | 1230 | | Tasmania |
| 2330 | 2300 | 2130 | 1330 | | Queensland |
| 0030 | 0000 | 2230 | 1430 | | High Seas (Northern, NE and SE areas) |
| 0130 | 0100 | 2330 | 1530 | | New South Wales & Victoria |
| 0230 | 0200 | 0030 | 1630 | | Tasmania |
| 0330 | 0300 | 0130 | 1730 | | Queensland |
| 0430 | 0400 | 0230 | 1830 | | High Seas (Northern, NE and SE areas) |
| 0530 | 0500 | 0330 | 1930 | | New South Wales & Victoria |
| 0630 | 0600 | 0430 | 2030 | | Tasmania |

* During daylight saving time, add 1 hour to EST and CST to obtain AEDT and ACDT equivalent

| Wiluna Broadcast Time | | | | Frequencies (kHz) | Forecasts |
|-----------------------|------|------|------|-------------------|---|
| WST | CST* | EST* | UTC | | |
| 0730 | 0900 | 0930 | 2330 | 4149 | Western Australia (north of NW Cape) Northern Territory |
| 0830 | 1000 | 1030 | 0030 | 8113 | Western Australia (south of NW Cape) |
| 0930 | 1100 | 1130 | 0130 | 12362 | South Australia |
| 1030 | 1200 | 1230 | 0230 | 16528 | Queensland (Gulf waters) |
| 1130 | 1300 | 1330 | 0330 | | Western Australia (north of NW Cape) Northern Territory |
| 1230 | 1400 | 1430 | 0430 | | Western Australia (south of NW Cape) |
| 1330 | 1500 | 1530 | 0530 | | South Australia |
| 1430 | 1600 | 1630 | 0630 | | Queensland (Gulf waters) High Seas (Northern and Western areas) |
| 1530 | 1700 | 1730 | 0730 | | Western Australia (north of NW Cape) Northern Territory |
| 1630 | 1800 | 1830 | 0830 | | Western Australia (south of NW Cape) |
| 1730 | 1900 | 1930 | 0930 | | South Australia |
| 1830 | 2000 | 2030 | 1030 | 2056 | Queensland (Gulf waters) High Seas (Northern and Western areas) |
| 1930 | 2100 | 2130 | 1130 | 6230 | Western Australia (north of NW Cape) Northern Territory |
| 2030 | 2200 | 2230 | 1230 | 8113 | Western Australia (south of NW Cape) |
| 2130 | 2300 | 2330 | 1330 | 12362 | South Australia |
| 2230 | 0000 | 0030 | 1430 | | Queensland (Gulf waters) High Seas (Northern and Western areas) |
| 2330 | 0100 | 0130 | 1530 | | Western Australia (north of NW Cape) Northern Territory |
| 0030 | 0200 | 0230 | 1630 | | Western Australia (south of NW Cape) |
| 0130 | 0300 | 0330 | 1730 | | South Australia |
| 0230 | 0400 | 0430 | 1830 | | Queensland (Gulf waters) High Seas (Northern and Western areas) |
| 0330 | 0500 | 0530 | 1930 | | Western Australia (north of NW Cape) Northern Territory |
| 0430 | 0600 | 0630 | 2030 | | Western Australia (south of NW Cape) |
| 0530 | 0700 | 0730 | 2130 | | South Australia |
| 0630 | 0800 | 0830 | 2230 | | Queensland (Gulf waters) High Seas (Northern and Western areas) |

* During daylight saving time, add 1 hour to EST and CST to obtain AEDT and ACDT equivalent



1. Routine coastal waters forecasts and observation reports are for areas within 60 nautical miles of the coast. They are generally issued twice a day with updates at other times if weather conditions change significantly from those forecasts. The BOM provides forecasts up to 4 days ahead.

2. Routine High Seas Forecasts are issued twice daily for surrounding Australia and extending from the coastline. The Australian High Seas Areas have been defined in the diagram below.

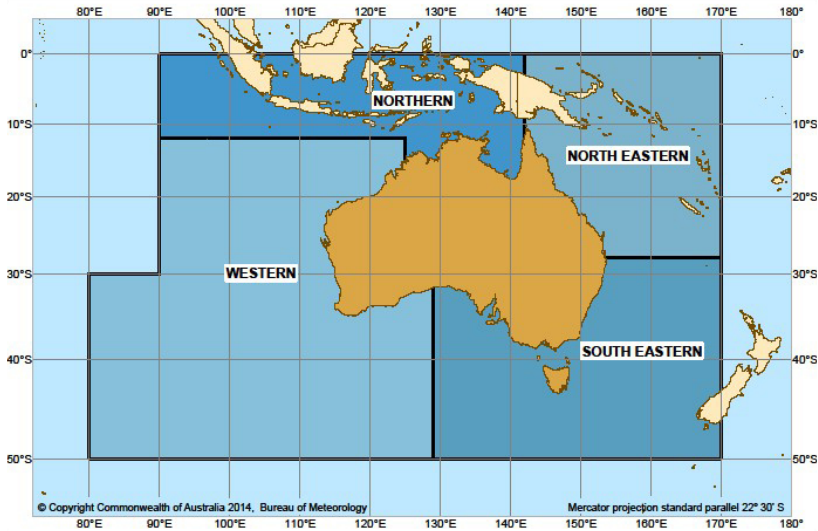
1. Warnings are issued by the BOM under the following categories:

Warnings for Coastal Waters

2. Warnings for Coastal Waters are issued whenever strong winds, gales, storm force or hurricane force winds are expected. The initial warning attempts to provide a 24 hour lead time and warnings are renewed every 6 hours.

141

Australian High Seas Areas



Warnings for the High Seas

- 3. Warnings to shipping on the high seas are issued whenever gale, storm or hurricane force winds are expected. The initial warning attempts to provide a 24 hour lead time and warnings are renewed every 6 hours. Australia is responsible for issuing gale and storm warnings in the areas shown in the diagram below.
- 4. Ocean warnings for the North, North Eastern and South Eastern areas of METAREA X are broadcast from VMC every hour on the hour (EST). Ocean warnings for the Western, Northern and South East areas of METAREA X are broadcast from VMW every hour on the hour (WST).

| Station | High Seas Areas | Broadcast |
|---------|--|----------------------------|
| VMC: | Northern North Eastern South Eastern | Every hour on the hour EST |
| VMW: | Western Northern South Eastern | Every hour on the hour WST |

- 5. More information on warnings for the high seas can be found on the BOM website.

| | |
|----------|--|
| Website: | www.bom.gov.au/marine |
|----------|--|

Areas of Responsibility for High Sea



9.4.4 Tropical Cyclone Warnings

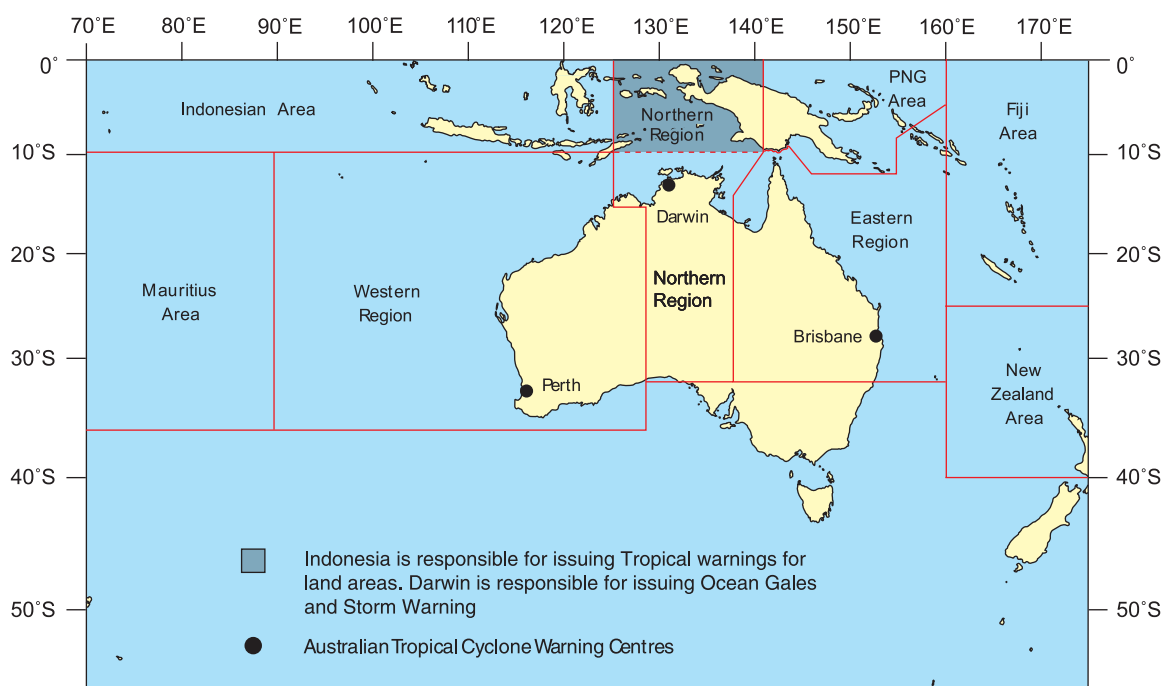
1. Australia is responsible for issuing Tropical Cyclones Warnings in the areas shown in the diagram below.
2. For current tropical cyclone warning information visit the BOM website.

| | |
|--|--|
| Cyclone Warning Services and warnings: | www.bom.gov.au/cyclone |
|--|--|

3. Tropical cyclones are defined when, among other factors, wind speeds equal to or greater than 34 knots are expected. Each tropical cyclone is assigned a distinctive name which it retains throughout its existence. Tropical cyclones vary in both size and intensity. Tropical cyclones are allocated a category which provides an indication of the strength of the strongest wind associated with the system. Categories range from '1' for a cyclone with gale force winds, through to '3' for cyclones with winds to hurricane force, to '5' for the very strongest cyclones (see Ch.4).
4. The severity category relates to Tropical Cyclone Warnings issued for coastal communities and emergency services that may be affected by the cyclone.
5. A gale, storm force or hurricane force wind warning is issued to shipping immediately upon indication that a tropical cyclone is developing.
6. Severity categories are not normally used in Tropical Cyclone Warnings for the High Seas (see severity category table below).

| Severity Category | Beaufort | Average winds in knots (ten minute averages) | Approximate maximum wind gusts in knots |
|-------------------|-----------------|--|---|
| 1 | Gale | 34 to 47 | 50 to 65 |
| 2 | Storm Force | 48 to 63 | 65 to 90 |
| 3 | Hurricane Force | 64 to 85 | 90 to 120 |
| 4 | Hurricane Force | 86 to 106 | 120 to 150 |
| 5 | Hurricane Force | More than 106 | More than 150 |

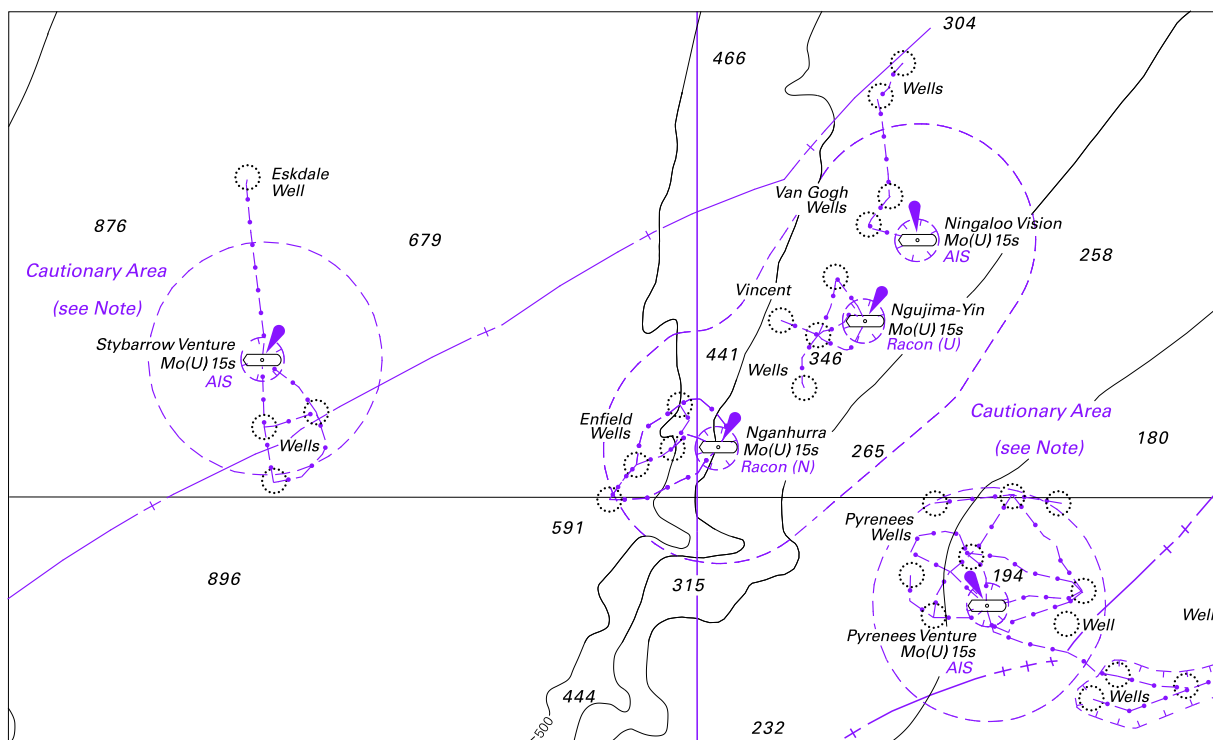
Tropical cyclone warning areas



Source: Bureau of Meteorology

| | |
|---|--|
| Weipa, QLD (12° 40'S, 141° 50'E) | |
| UN/LOCODE: AU WEI | |
| Chart: | Aus 4 |
| Security Regulated Port: | Yes |
| Port Authority: | North Queensland Bulk Ports Corporation |
| Website: | www.nqbp.com.au |
| email: | info@nqbp.com.au |
| Telephone: | +61 7 4955 8155 |
| Harbour Control (VTS) call: | Weipa VTS |
| Telephone: | +61 7 4052 7470 |
| Fax: | +61 7 4052 7460 |
| email: | vtscairns@msq.qld.gov.au |
| Pilotage: | Compulsory |
| Pilot | |
| Telephone (office hours): | +61 7 4069 7170 |
| Telephone (AOH): | +61 7 4069 9497 |
| Ordering: | 48 hours (contact VTS) |
| Pilot Boarding Grounds | 12° 43.90'S, 141° 36.00'E |
| Small vessels <100 LOA | 12° 40.45'S, 141° 43.33'E |
| Communication | "Weipa VTS" |
| Call up, emergencies: | VHF Ch 16 |
| Port Operations VTS: | VHF Ch 06, 08 |
| Tugs: | VHF Ch 06, 08 |
| Working Channel | VHF Ch 12 |
| Notice of ETA: | 48 hours |
| For more information: | www.msq.qld.gov.au/Shipping/Port-procedures/Port-procedures-weipa.aspx |

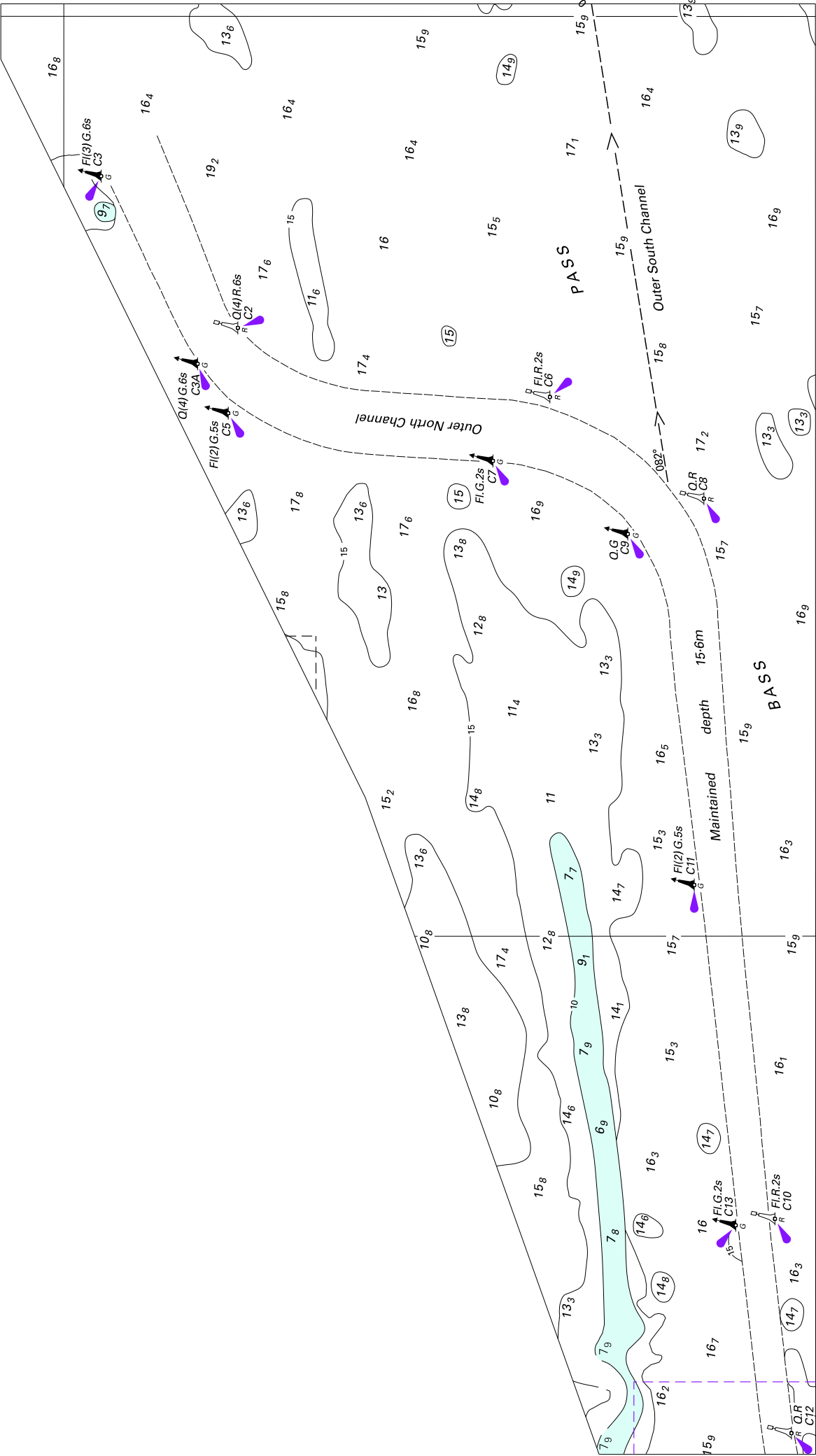
To accompany Australian Notice to Mariners 1164/2014



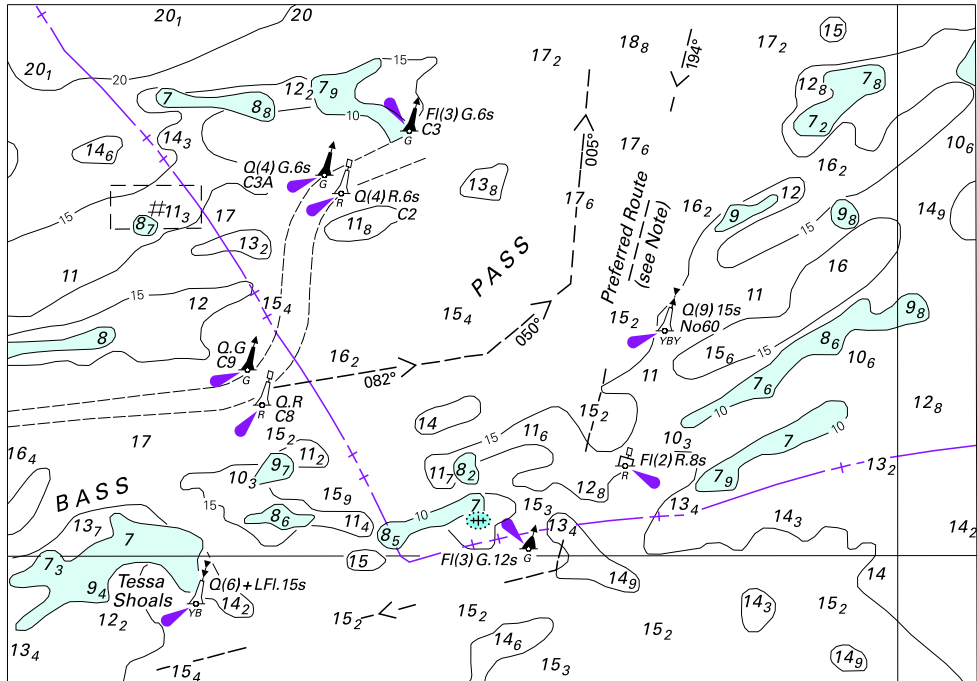
Block for chart Aus 329

© Commonwealth of Australia 2014

(159.6 x 96.5mm)



To accompany Australian Notice to Mariners 1165/2014

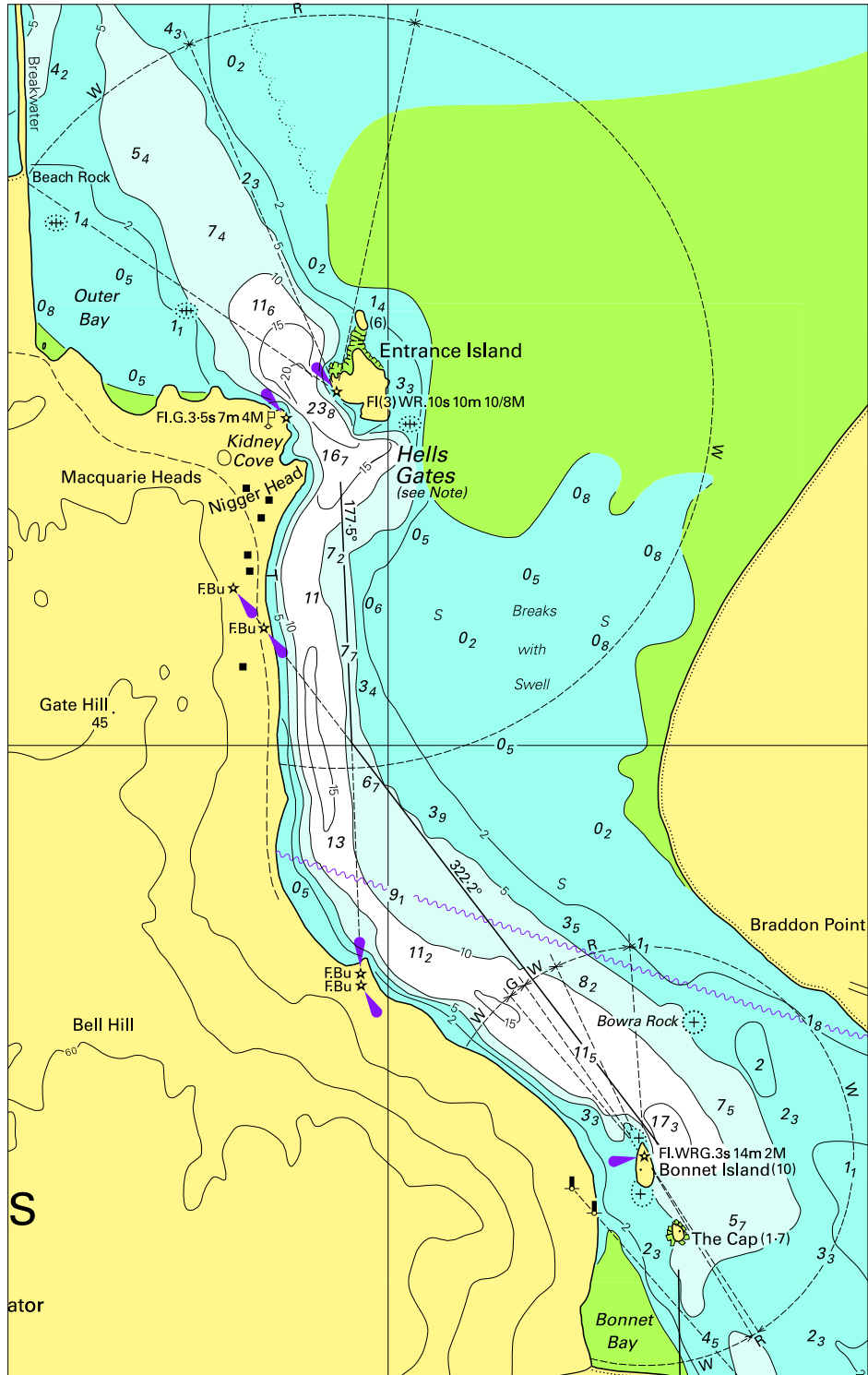


Block for Chart Aus 740

© Commonwealth of Australia 2014

(128.2 x 89.8 mm)

To accompany Australian Notice to Mariners 1174/2014



Block for chart Aus 177

© Commonwealth of Australia 2014

(123.3 x 196.9mm)