



21 November 2014

Edition 23

Australian Notices to Mariners are the authority for correcting Australian Charts and Publications

AUSTRALIAN NOTICES TO MARINERS

Notices 1104 - 1154



Published fortnightly by the Australian Hydrographic Service

Commodore B.K. BRACE RAN
Hydrographer of Australia

SECTIONS.

- I. Australian Notices to Mariners, including blocks and notes.
- II. Hydrographic Reports.
- III. Navigational Warnings.

SUPPLEMENTS.

- I. Tracings
- II. Cumulative List of Australian Notices to Mariners.
- III. Cumulative List of Temporary and Preliminary Australian Notices to Mariners.
- IV. Temporary and Preliminary Notices in force.
- V. Amendments to Admiralty List of Lights and Fog Signals (Vol K), Radio Signals (NP 281(2), 282, 283(2), 285, 286(4)) and Sailing Directions (NP 9, 13, 14, 15, 33, 34, 35, 36, 39, 44, 51, 60, 61, 62, 100, 136).

© Commonwealth of Australia 2014

This work is copyright. Apart from any use permitted under the Copyright Act 1968, no part may be reproduced by any process, adapted, communicated or commercially exploited without prior written permission from The Commonwealth represented by the Australian Hydrographic Service.

IMPORTANT NOTICE

This edition of Notices to Mariners includes all significant information affecting AHS products which the AHS has become aware of since the last edition. All reasonable efforts have been made to ensure the accuracy and completeness of the information, including third party information, on which these updates are based. The AHS regards third parties from which it receives information as reliable, however the AHS cannot verify all such information and errors may therefore exist. The AHS does not accept liability for errors in third party information.

GENERAL INSTRUCTIONS

The substance of these notices should be inserted on the charts affected.

Bearings are referred to the true compass and are reckoned clockwise from North; those relating to lights are given as seen by an observer from seaward. Positions quoted in permanent notices relate to the horizontal datum for the chart(s). When preliminary or temporary notices affect multiple charts, positions will be provided in relation to only one horizontal datum and that datum will be specified. When the multiple charts do not have a common horizontal datum, mariners will be required to adjust the position(s) for those charts not on the specified datum. The range quoted for a light is its nominal range. Depths are with reference to the chart datum of each chart. Heights are above mean high water springs or mean higher high water, as appropriate.

The capital letter (P) or (T) after the number of any notice denotes a preliminary or temporary notice respectively, which are contained separately at the end of the permanent notices. A star (*) adjacent to the number of a notice indicates that the notice is based on original information.

REPORTING OF DANGERS

Mariners are particularly requested to notify the AUSTRALIAN HYDROGRAPHIC SERVICE, Locked Bag 8801 Wollongong, NSW 2500 (Fax 02-4223 6599, e-mail Hydro.NTM@defence.gov.au or, alternatively by filling in and submitting the [Hydrographic Notes](#) forms located on the web site – www.hydro.gov.au), immediately on the discovery of new dangers or suspected dangers to navigation. For changes or defects in aids to navigation notify AusSAR (Fax 02-6230 6868 or email rccaus@amsa.gov.au).

AUTHORISED USE

Copies of Australian notices are available free of charge from the Australian Hydrographic Service (AHS) website (www.hydro.gov.au) and through the eNotices (email) service (www.hydro.gov.au/enotices/enotices.htm).

Individual Notices may be copied for the purpose of inserting Notice substance on official charts and publications. Paper copies may be printed by chart agents and distributed to customers on a cost recovery basis. Participating chart agents are listed on the AHS website as providing a 'Paper Notices to Mariners' service (www.hydro.gov.au/prodserv/distributors/distributors.htm). Copies of the notices may not be sold for profit without prior written agreement.

NUMERICAL INDEX OF NOTICES TO MARINERS

Edition No 23

Notices	Aus Chart, INT Chart, ENC Cell, AHP, BA Pubs
1104	Aus 26, 29, 151, 301, 328, 741, 742, 743, 744, 834
1105	Amendment to Australian National Tide Tables 2014 and 2015
1106	Amendment to Seafarers Handbook for Australian Waters AHP20
1107	Aus 258, 828, 829, 830, AXA 0830T
1108	Aus 247, 819
1109	Aus 490, 820, AX 00820S
1110	Aus 247, 490, 819, 820, AX 00367S, 00820S
1111	Aus 376, 377, 837, 840
1112	Aus 260, 367, 490, 822, AX 00260T, 00260S, 00367S, 00822S
1113	Aus 508, 628
1114	Aus 383, 509, 512, 513
1115	Aus 292, 293, 376, 839, 841
1116	Aus 294, 301, 376, 700
1117	Aus 119
1118	Aus 328, 744, 4060, 4070, 4071, 4708, 4723, 4725, INT 60, 70, 71, 708, 723, 725, AX 04708U, 04723U
1119	Aus 115
1120	Aus 327, 741, 4722, 4723, INT 722, 723, AX 04722U, 04723U
1121	Aus 72
1122	Aus 754, AX 00754S
1123	Aus 346
1124	Aus 127
1125	Aus 357, 487, 801, 802
1126	Aus 144
1127	Aus 171, 173, 174
1128(T)	Aus 222
1129(T)	Aus 207, 208
1130(T)	Aus 200, 201, AX 00200T, 00201T
1131(T)	Aus 238
1132(T)	Aus 816, 817
1133(T)	Aus 252, 824, 825
1134(T)	Aus 235, 236, 814, 815
1135(T)	Aus 235, 236, 237, 238, 814, 815
1136(T)	Aus 260, 261, 820, 822, AX 00260T, 00260S, 00820S, 00822S
1137(T)	Aus 248, 260, 261, 367, 820, 822, AX 00260T, 00260S, 00261L, 00367S, 00822S
1138(T)	Aus 251, 823, 824, AX 00823S
1139(T)	Aus 240, 815, 817
1140(T)	Aus 515, 516, 637, 4621, INT 621, AX 04621U
1141(T)	Aus 28
1142(T)	Aus 29, 309, 316, 722, AX 00309T, 00309U, 00722T
1143(T)	Aus 328, 4723, INT 723, AX 04723U
1144(T)	Aus 328
1145(T)	Aus 327, 328
1146(T)	Aus 117, 334, 754, AX 00117T, 00334S, 00754S, AXA 0754S
1147(T)	Aus 331, 4725, INT 725
1148(T)	Aus 329, 4723, INT 723, AX 04723U
1149(T)	Aus 328, 4723, INT 723, AX 04723U
1150(T)	Aus 312, 4721, INT 721, AX 00312U, 04721U
1151(T)	Aus 154
1152(T)	Aus 153
1153(T)	Aus 173, 795
1154(T)	Aus 171, 172

NUMERICAL INDEX OF CHARTS AFFECTED

Edition No 23

Aus Chart	Notices
Aus 26	1104
Aus 28	1141(T)
Aus 29	1104, 1142(T)
Aus 72	1121
Aus 115	1119
Aus 117	1146(T)
Aus 119	1117
Aus 127	1124
Aus 144	1126
Aus 151	1104
Aus 153	1152(T)
Aus 154	1151(T)
Aus 171	1127, 1154(T)
Aus 172	1154(T)
Aus 173	1127, 1153(T)
Aus 174	1127
Aus 200	1130(T)
Aus 201	1130(T)
Aus 207	1129(T)
Aus 208	1129(T)
Aus 222	1128(T)
Aus 235	1134(T), 1135(T)
Aus 236	1134(T), 1135(T)
Aus 237	1135(T)
Aus 238	1131(T), 1135(T)
Aus 240	1139(T)
Aus 247	1108, 1110
Aus 248	1137(T)
Aus 251	1138(T)
Aus 252	1133(T)
Aus 258	1107
Aus 260	1112, 1136(T), 1137(T)
Aus 261	1136(T), 1137(T)
Aus 292	1115
Aus 293	1115
Aus 294	1116
Aus 301	1104, 1116
Aus 309	1142(T)
Aus 312	1150(T)
Aus 316	1142(T)
Aus 327	1120, 1145(T)
Aus 328	1104, 1118, 1143(T), 1144(T), 1145(T), 1149(T)
Aus 329	1148(T)
Aus 331	1147(T)
Aus 334	1146(T)
Aus 346	1123
Aus 357	1125
Aus 367	1112, 1137(T)
Aus 376	1111, 1115, 1116
Aus 377	1111
Aus 383	1114
Aus 487	1125
Aus 490	1109, 1110, 1112
Aus 508	1113

Aus Chart	Notices
Aus 509	1114
Aus 512	1114
Aus 513	1114
Aus 515	1140(T)
Aus 516	1140(T)
Aus 628	1113
Aus 637	1140(T)
Aus 700	1116
Aus 722	1142(T)
Aus 741	1104, 1120
Aus 742	1104
Aus 743	1104
Aus 744	1104, 1118
Aus 754	1122, 1146(T)
Aus 795	1153(T)
Aus 801	1125
Aus 802	1125
Aus 814	1134(T), 1135(T)
Aus 815	1134(T), 1135(T), 1139(T)
Aus 816	1132(T)
Aus 817	1132(T), 1139(T)
Aus 819	1108, 1110
Aus 820	1109, 1110, 1136(T), 1137(T)
Aus 822	1112, 1136(T), 1137(T)
Aus 823	1138(T)
Aus 824	1133(T), 1138(T)
Aus 825	1133(T)
Aus 828	1107
Aus 829	1107
Aus 830	1107
Aus 834	1104
Aus 837	1111
Aus 839	1115
Aus 840	1111
Aus 841	1115
Aus 4060	1118
Aus 4070	1118
Aus 4071	1118
Aus 4621	1140(T)
Aus 4708	1118
Aus 4721	1150(T)
Aus 4722	1120
Aus 4723	1118, 1120, 1143(T), 1148(T), 1149(T)
Aus 4725	1118, 1147(T)
AX 00117T	1146(T)
AX 00200T	1130(T)
AX 00201T	1130(T)
AX 00260S	1112, 1136(T), 1137(T)
AX 00260T	1112, 1136(T), 1137(T)
AX 00261L	1137(T)
AX 00309T	1142(T)
AX 00309U	1142(T)
AX 00312U	1150(T)
AX 00334S	1146(T)

Aus Chart	Notices
AX 00367S	1110 , 1112 , 1137(T)
AX 00722T	1142(T)
AX 00754S	1122 , 1146(T)
AX 00820S	1109 , 1110 , 1136(T)
AX 00822S	1112 , 1136(T) , 1137(T)
AX 00823S	1138(T)
AX 04621U	1140(T)
AX 04708U	1118
AX 04721U	1150(T)
AX 04722U	1120
AX 04723U	1118 , 1120 , 1143(T) , 1148(T) , 1149(T)
AXA 0754S	1146(T)
AXA 0830T	1107

INT Chart	Notices
INT 60	1118
INT 70	1118
INT 71	1118
INT 621	1140(T)
INT 708	1118
INT 721	1150(T)
INT 722	1120
INT 723	1118 , 1120 , 1143(T) , 1148(T) , 1149(T)
INT 725	1118 , 1147(T)

1104 AUSTRALIA - Products
 Australian Hydrographic Service (AA776266)

New Edition

<i>Chart</i>	<i>Published</i>	<i>Title and description of amendments</i>	<i>Scale</i>	<i>Index Chart</i>	<i>Price</i>
Aus 26	21/11/2014	Australia - North Coast - Northern Territory - Approaches to Port Darwin 12° 16'·3 S – 12° 34'·0 S 130° 30'·0 E – 130° 58'·5 E <i>New edition with general updating throughout; including new pipelines.</i>	1:50 000	Aus 5000	\$35.00
Aus 29	21/11/2014	Australia - North Coast - Northern Territory - Approaches to Bynoe Harbour and Port Patterson 12° 18'·0 S – 12° 46'·0 S 130° 22'·0 E – 130° 40'·0 E <i>New edition with general updating throughout; including new pipelines.</i>	1:50 000	Aus 5000	\$35.00
Aus 834	21/11/2014	Australia - East Coast - Queensland - Claremont Isles to Cape Weymouth 12° 22'·0 S – 13° 54'·0 S 143° 13'·2 E – 144° 12'·5 E <i>New edition with general updating throughout; including new two way route.</i>	1:150 000	Aus 5000	\$35.00

New edition to be published shortly

<i>Chart</i>	<i>Title</i>	<i>Scale</i>	<i>Expected Publication Date</i>
Aus 328	Australia - North West Coast - Western Australia - Montebello Islands to North West Cape	1:300 000	5 December 2014
Aus 741	Australia - North West Coast - Western Australia - Approaches to Dampier Archipelago	1:150 000	5 December 2014
Aus 742	Australia - North West Coast - Western Australia - Rosemary Island to Barrow Island	1:150 000	5 December 2014
Aus 743	Australia - North West Coast - Western Australia - Barrow Island to Onslow	1:150 000	5 December 2014
Aus 744	Australia - North West Coast - Western Australia - Exmouth Gulf and Approaches	1:150 000	5 December 2014

Chart permanently withdrawn

<i>Chart</i>	<i>On publication of new edition</i>	<i>Remarks</i>
Aus 26	Aus 26	
Aus 29	Aus 29	
Aus 151	Aus 151	NTM 1049/14 refers
Aus 301	Aus 301	NTM 1049/14 refers
Aus 834	Aus 834	

For further details refer to the AHS website at www.hydro.gov.au for new edition and new chart stock arrival information.

When placing orders with a chart agent, mariners should advise whether their order pertains to the current edition or the new edition.

1105 AUSTRALIA - Product - Amendment to Australian National Tide Tables 2014 and 2015
 Australian Hydrographic Service (AA775791, AA777640)

ANTT 2014

Page xxx

Amend Booby Island To Chart Datum AUS 296 NE 10 Oct 2014 0.0

Page xxxiii

Amend Goods Island To Chart Datum AUS 296 NE 10 Oct 2014 0.0
 Goods Island To Chart Datum AUS 293 NE 10 Oct 2014 0.0
 Ince Point To Chart Datum AUS 293 NE 10 Oct 2014 0.0

Page xxxvi

Amend Nardana Patches To Chart Datum AUS 293 NE 10 Oct 2014 0.0

Page xxxvii

Amend Thursday Island To Chart Datum AUS 293 NE 10 Oct 2014 0.0
 Turtle Head (Hammond Island) To Chart Datum AUS 293 NE 10 Oct 2014 0.0
 Twin Island To Chart Datum AUS 293 NE 10 Oct 2014 0.0

Page xxxviii

Amend Weipa To Chart Datum AUS 301 NE 7 Nov 2014 0.0
 Western Port To Chart Datum AUS 151 NE 7 Nov 2014 0.0

ANTT 2015

Page xxx

Amend Booby Island To Chart Datum AUS 296 NE 10 Oct 2014 0.0

Page xxxiii

Amend Goods Island To Chart Datum AUS 296 NE 10 Oct 2014 0.0
 Goods Island To Chart Datum AUS 293 NE 10 Oct 2014 0.0

Page xxxiv

Amend Ince Point To Chart Datum AUS 293 NE 10 Oct 2014 0.0

Page xxxvi

Amend Nardana Patches To Chart Datum AUS 293 NE 10 Oct 2014 0.0

Page xxxviii

Amend Thursday Island To Chart Datum AUS 293 NE 10 Oct 2014 0.0

Page xxxix

Amend Weipa To Chart Datum AUS 301 NE 7 Nov 2014 0.0
 Western Port To Chart Datum AUS 151 NE 7 Nov 2014 0.0
 Turtle Head (Hammond Island) To Chart Datum AUS 293 NE 10 Oct 2014 0.0
 Twin Island To Chart Datum AUS 293 NE 10 Oct 2014 0.0

1106 AUSTRALIA - Product - Amendment to Seafarers Handbook for Australian Waters AHP20
 Australian Maritime Safety Authority (AA771362)

Chapter 10.3.4 - Communicating with REEFVTS - Table page 164

Delete Heath (K)

1107* AUSTRALIA - QUEENSLAND - Brook Islands to Russell Island - Lights

Australian Maritime Safety Authority Final ATH 27/2014, 30/2014, 31/2014 (AA774256, AA774257, AA774257)

Aus 258 (plan, Gladys Inlet to King Reefs) [NE 15/8/2014]

Amend	light range to 11M	17° 40'.6 S	146° 10'.8 E
-------	--------------------	-------------	--------------

Aus 828 [767/2014]

Amend	light range to 11M	18° 09'.4 S	146° 18'.3 E
-------	--------------------	-------------	--------------

Aus 829 [887/2013]

Amend	light range to 11M	18° 09'.4 S	146° 18'.3 E
	light range to 11M	17° 40'.6 S	146° 10'.8 E
	light to Fl(2)10s 76m 11M	17° 13'.7 S	146° 05'.7 E

Aus 830 [845/2014]

Amend	light to Fl(2)10s 76m 11M	17° 13'.7 S	146° 05'.7 E
-------	---------------------------	-------------	--------------

AXA 0830T [845/2014]

Amend	light to Fl(2)10s 76m 11M	17° 13'.7 S	146° 05'.7 E
-------	---------------------------	-------------	--------------

1108* AUSTRALIA - QUEENSLAND - Cape Capricorn - DepthsHMAS *Melville* (DHDB 948568)**Aus 247 [721/2014]**

Insert	depth, 18 ₄ m, and extend contour N to enclose	23° 28'.49 S	151° 14'.75 E
--------	-----------------------------------------------------------	--------------	---------------

Delete	depth, 14 ₃ m, and enclosing contour	23° 28'.5 S	151° 14'.9 E
--------	-------------------------------------------------	-------------	--------------

Aus 819 [899/2014]

Delete	depth, 14 ₃ m, and enclosing contour	23° 28'.5 S	151° 14'.9 E
--------	-------------------------------------------------	-------------	--------------

1109* AUSTRALIA - QUEENSLAND - Cape Manifold to Swain Reefs - Depths; firing practice area

UKHO (AA776197)

Aus 490 [999/2014]

Insert	accompanying block	21° 15'.0 S	150° 50'.0 E
--------	--------------------	-------------	--------------

Delete	firing practice area limit, between	22° 46'.5 S	150° 48'.5 E
		22° 47'.7 S	150° 58'.5 E
		22° 38'.7 S	150° 54'.2 E
		22° 19'.0 S	151° 05'.2 E
		21° 55'.0 S	150° 56'.2 E
		21° 45'.9 S	150° 34'.0 E

Aus 820 [NE 1/8/2014]

Insert	firing practice area limit, between	22° 47'.04 S	150° 53'.21 E
		22° 40'.47 S	150° 55'.02 E

Delete	firing practice area limit, between	22° 47'.0 S	150° 53'.2 E
		22° 47'.6 S	150° 58'.5 E
		22° 40'.5 S	150° 55'.0 E

AX 00820S [676/2012]

Insert	firing practice area limit, between	22° 47'.04 S	150° 53'.21 E
		22° 40'.47 S	150° 55'.02 E

Delete	firing practice area limit, between	22° 47'.0 S	150° 53'.2 E
		22° 47'.6 S	150° 58'.5 E
		22° 40'.5 S	150° 55'.0 E

1110* AUSTRALIA - QUEENSLAND - Great Keppel Island - Light

Australian Maritime Safety Authority Final ATH 28/2014 (AA774254)

Aus 247 [1108/2014]			
Amend	light range to 11M	23° 10'.7 S	150° 59'.5 E
Aus 490 [1109/2014]			
Amend	light range to 11M	23° 10'.7 S	150° 59'.5 E
Aus 819 [1108/2014]			
Amend	light range to 11M	23° 10'.7 S	150° 59'.5 E
Aus 820 [1109/2014]			
Amend	light range to 11M	23° 10'.7 S	150° 59'.5 E
AX 00367S [999/2014]			
Amend	light range to 11M	23° 10'.7 S	150° 59'.5 E
AX 00820S [1109/2014]			
Amend	light range to 11M	23° 10'.7 S	150° 59'.5 E

1111* AUSTRALIA - QUEENSLAND - Gurigur Reef - WreckHMAS *Benalla* (AA776311 - AA776313)

Aus 376 [156/2014]			
Insert	safe clearance depth, 32m, enclosed by danger circle with legend, Wk	9° 59'.39 S	143° 26'.53 E
Aus 377 [1200/2013]			
Insert	safe clearance depth, 32m, enclosed by danger circle with legend, Wk	9° 59'.39 S	143° 26'.53 E
Aus 837 [685/2013]			
Insert	safe clearance depth, 32m, enclosed by danger circle with legend, Wk	9° 59'.39 S	143° 26'.53 E
Aus 840 [746/2013]			
Insert	safe clearance depth, 32m, enclosed by danger circle with legend, Wk	9° 59'.39 S	143° 26'.53 E

1112* AUSTRALIA - QUEENSLAND - Hervey Islands - Clara Group - Light

Australian Maritime Safety Authority Final ATH 26/2014 (AA774259)

Aus 260 [NE 18/7/2014]			
Amend	light range to 11M	22° 20'.4 S	150° 43'.1 E
Aus 367 [999/2014]			
Amend	light range to 11M	22° 20'.4 S	150° 43'.1 E
Aus 490 [1110/2014]			
Amend	light range to 11M	22° 20'.4 S	150° 43'.1 E
Aus 822 [999/2014]			
Amend	light range to 11M	22° 20'.4 S	150° 43'.1 E
AX 00260S [440/2014]			
Amend	light range to 11M	22° 20'.4 S	150° 43'.1 E
AX 00260T [440/2014]			
Amend	light range to 11M	22° 20'.4 S	150° 43'.1 E
AX 00367S [1110/2014]			
Amend	light range to 11M	22° 20'.4 S	150° 43'.1 E
AX 00822S [999/2014]			
Amend	light range to 11M	22° 20'.4 S	150° 43'.1 E

1113* PAPUA NEW GUINEA - Boiaboawaga Island - Light sector
 Australian Hydrographic Service (AA143741)

Aus 508 [998/2013]

Delete	obscured sector, centred on	10° 11'.6 S	150° 55'.7 E
--------	-----------------------------	-------------	--------------

Aus 628 [131/2013]

Delete	obscured sector, centred on	10° 12'.31 S	150° 54'.70 E
--------	-----------------------------	--------------	---------------

1114* PAPUA NEW GUINEA - Pananiu Island to Galogalohi Reef - Nav aids
 Australian Hydrographic Service (AA143625, AA144020, AA148873)

Aus 383 [132/2013]

Insert	light sector White 32·5° -327·5° (295°)	10° 13'.10 S	151° 51'.95 E
--------	-----------------------------------------	--------------	---------------

Aus 509 [1253/2013]

Insert	light sector White 32·5° -327·5° (295°)	10° 13'.10 S	151° 51'.95 E
--------	-----------------------------------------	--------------	---------------

Move	light beacon to	10° 15'.4 S 10° 15'.44 S	151° 10'.5 E 151° 10'.39 E
------	--------------------	-----------------------------	-------------------------------

Aus 512 [483/2014]

Insert	light sector White 32·5° -327·5° (295°)	10° 13'.10 S	151° 51'.95 E
--------	-----------------------------------------	--------------	---------------

Amend	elevation to 16m	10° 47'.2 S	152° 00'.4 E
-------	------------------	-------------	--------------

Aus 513 [191/2011]

Insert	light sector White 32·5° -327·5° (295°)	10° 13'.10 S	151° 51'.95 E
--------	-----------------------------------------	--------------	---------------

Move	light beacon to	10° 15'.4 S 10° 15'.44 S	151° 10'.5 E 151° 10'.39 E
------	--------------------	-----------------------------	-------------------------------

1115* AUSTRALIA - TORRES STRAIT - East Strait Island - Light
 Australian Maritime Safety Authority Final ATH 29/2014 (AA774258)

Aus 292 [320/2014]

Amend	light to Fl.10s 24m 15M	10° 29'.8 S	142° 27'.1 E
-------	-------------------------	-------------	--------------

Aus 293 [NE 10/10/2014]

Amend	light to Fl.10s 24m 15M	10° 29'.77 S	142° 27'.08 E
-------	-------------------------	--------------	---------------

Aus 376 [1111/2014]

Amend	light to Fl.15M	10° 29'.8 S	142° 27'.1 E
-------	-----------------	-------------	--------------

Aus 839 [559/2014]

Amend	light to Fl.15M	10° 29'.8 S	142° 27'.1 E
-------	-----------------	-------------	--------------

Aus 841 [320/2014]

Amend	light to Fl.15M	10° 29'.8 S	142° 27'.1 E
-------	-----------------	-------------	--------------

1116* AUSTRALIA - TORRES STRAIT - Endeavour Strait - Tidal arrows

Australian Hydrographic Service (AA775727)

Aus 294 [NE 22/2/2013]

Delete	tide stream arrows, centred on	10° 48'.1 S	142° 06'.9 E
	tide stream arrows, centred on	10° 51'.4 S	142° 03'.1 E

Aus 301 [NE 7/11/2014]

Delete	tide stream arrows, centred on	10° 48'.1 S	142° 06'.9 E
--------	--------------------------------	-------------	--------------

Aus 376 [1115/2014]

Delete	tide stream arrows, centred on	10° 48'.1 S	142° 06'.9 E
--------	--------------------------------	-------------	--------------

Aus 700 [1248/2013]

Delete	tide stream arrows, centred on	10° 48'.5 S	142° 06'.4 E
	tide stream arrows, centred on	10° 51'.3 S	142° 04'.3 E

1117* AUSTRALIA - WESTERN AUSTRALIA - Bandy Creek - Light beacons

UKHO (AA775115)

Aus 119 (plan, Bandy Creek Boat Harbour) [1057/2014]

Substitute	starboard lateral light beacon, <i>Fl.G.5s</i> , with topmark for light buoy	33° 49'.96 S	121° 55'.97 E
------------	------------------------------------------------------------------------------	--------------	---------------

Amend	light beacon to <i>Fl.R.5s</i>	33° 50'.10 S	121° 55'.91 E
	light beacon to <i>Fl.R.5s No2</i>	33° 50'.03 S	121° 55'.90 E
	light beacon to <i>Fl.G.5s No1</i>	33° 50'.01 S	121° 55'.95 E
	light beacon to <i>Fl.R.5s No4</i>	33° 49'.93 S	121° 55'.95 E
	light beacon to <i>Fl.G.5s No3</i>	33° 49'.92 S	121° 56'.01 E

1118* AUSTRALIA - WESTERN AUSTRALIA - Bessieres Island - Obstruction northwestwards

Former Notice - 615(T)/2013 is cancelled

BHP Billiton Petroleum Pty Ltd (AA677207, AA775036)

Aus 328 [728/2014]

Substitute	depth, 35m, enclosed by danger circle with legend, <i>Obstn</i> , for lit mooring buoy	21° 13'.3 S	114° 38'.8 E
------------	----------------------------------------------------------------------------------------	-------------	--------------

Aus 744 [406/2014]

Substitute	depth, 35m, enclosed by danger circle with legend, <i>Obstn</i> , for lit mooring buoy	21° 13'.3 S	114° 38'.8 E
------------	----------------------------------------------------------------------------------------	-------------	--------------

Aus 4060 (INT 60) [314/2014]

Delete	lit platform	21° 12'.0 S	114° 36'.0 E
--------	--------------	-------------	--------------

Aus 4070 (INT 70) [906/2014]

Delete	lit platform	21° 12'.0 S	114° 36'.0 E
--------	--------------	-------------	--------------

Aus 4071 (INT 71) [906/2014]

Delete	lit platform	21° 12'.0 S	114° 36'.0 E
--------	--------------	-------------	--------------

Aus 4708 (INT 708) [751/2013]

Substitute	depth, 35m, enclosed by danger circle with legend, <i>Obstn</i> , for lit mooring buoy	21° 13'.3 S	114° 38'.8 E
------------	----------------------------------------------------------------------------------------	-------------	--------------

Aus 4723 (INT 723) [1001/2014]

Substitute	depth, 35m, enclosed by danger circle with legend, <i>Obstn</i> , for lit mooring buoy	21° 13'.3 S	114° 38'.8 E
------------	----------------------------------------------------------------------------------------	-------------	--------------

Aus 4725 (INT 725) [806/2013]

Substitute	depth, 35m, enclosed by danger circle with legend, <i>Obstn</i> , for lit mooring buoy	21° 13'.3 S	114° 38'.8 E
------------	----------------------------------------------------------------------------------------	-------------	--------------

AX 04708U [751/2013]

Substitute	depth, 35m, enclosed by danger circle with legend, <i>Obstn</i> , for lit mooring buoy	21° 13'.3 S	114° 38'.8 E
------------	----------------------------------------------------------------------------------------	-------------	--------------

AX 04723U [1001/2014]

Substitute	depth, 35m, enclosed by danger circle with legend, <i>Obstn</i> , for lit mooring buoy	21° 13'.3 S	114° 38'.8 E
------------	----------------------------------------------------------------------------------------	-------------	--------------

1119* AUSTRALIA - WESTERN AUSTRALIA - Bunbury - Infrastructure; depths

Department of Transport WA (DHDB 2708907)

Aus 115 [488/2014]

Insert	accompanying block B	33° 19'.0 S	115° 39'.0 E
--------	----------------------	-------------	--------------

Aus 115 (plan, Port of Bunbury) [488/2014]

Insert	accompanying block A	33° 18'.7 S	115° 38'.7 E
--------	----------------------	-------------	--------------

1120* AUSTRALIA - WESTERN AUSTRALIA - Glomar Shoal - Foul ground southeastwards
McDermott Australia Pty Ltd (AA775036)

Aus 327 [903/2014]			
Insert	#, centred on	19° 37'.32 S	116° 54'.07 E
Aus 741 [1003/2014]			
Insert	#, centred on	19° 37'.32 S	116° 54'.07 E
Aus 4722 (INT 722) [904/2014]			
Insert	#, centred on	19° 37'.3 S	116° 54'.1 E
Aus 4723 (INT 723) [1118/2014]			
Insert	#, centred on	19° 37'.3 S	116° 54'.1 E
AX 04722U [904/2014]			
Insert	#, centred on	19° 37'.3 S	116° 54'.1 E
AX 04723U [1118/2014]			
Insert	#, centred on	19° 37'.3 S	116° 54'.1 E

1121* AUSTRALIA - WESTERN AUSTRALIA - Ningaloo Reef - Mooring buoys
Australian Hydrographic Service (AA673249, AA673250)

Aus 72 (plan, Mauds Landing) [1050/2013]			
Delete	mooring buoy	23° 08'.39 S	113° 46'.02 E
	mooring buoy	23° 08'.33 S	113° 45'.53 E

1122* AUSTRALIA - WESTERN AUSTRALIA - Rottnest Island - Light; racon
UKHO (AA775379)

Aus 754 [1005/2014]			
Amend	light to <i>Fl.R.3s 6M</i>	31° 59'.9 S	115° 33'.7 E
Delete	legend, Racon (C)	31° 57'.2 S	115° 38'.0 E
AX 00754S [1005/2014]			
Amend	light to <i>Fl.R.3s 6M</i>	31° 59'.9 S	115° 33'.7 E
Delete	legend, Racon (C)	31° 57'.2 S	115° 38'.0 E

1123* AUSTRALIA - SOUTH AUSTRALIA - Kangaroo Island - Cape Bedout to Pennington Bay - Historic wrecks
Australian Hydrographic Service (AA775098)

Aus 346 [1256/2012]			
Delete	historic wreck with legend, Historic Wk (see Note)	35° 57'.6 S	136° 38'.0 E
	historic wreck with legend, Historic Wk (see Note)	35° 51'.4 S	137° 45'.1 E

1124* AUSTRALIA - SOUTH AUSTRALIA - Victor Harbor - Depths; light
HydroSurvey Australia (DHDB 2544767), Department of Planning, Transport and Infrastructure SA (AA763397)

Aus 127 (plan, King Head to Port Elliot) [776/2014]			
Insert	accompanying block B	35° 34'.6 S	138° 38'.6 E
Aus 127 (plan, Victor Harbor) [776/2014]			
Insert	accompanying block A	35° 33'.5 S	138° 38'.3 E

1125* AUSTRALIA - VICTORIA - Cape Liptrap to East Moncoeur Island - AIS
 Australian Hydrographic Service (AA84578)

Aus 357 [851/2014]

Delete	magenta circle with legend, AIS, at light	39° 13'.7 S	146° 32'.3 E
--------	-------------------------------------------	-------------	--------------

Aus 487 [851/2014]

Delete	magenta circle with legend, AIS, at light	38° 54'.4 S	145° 55'.4 E
	magenta circle with legend, AIS, at light	39° 13'.7 S	146° 32'.3 E

Aus 801 [1008/2014]

Delete	magenta circle with legend, AIS, at light	38° 54'.4 S	145° 55'.4 E
--------	-------------------------------------------	-------------	--------------

Aus 802 [327/2014]

Delete	magenta circle with legend, AIS, at light	38° 54'.4 S	145° 55'.4 E
	magenta circle with legend, AIS, at light	39° 13'.7 S	146° 32'.3 E

1126* AUSTRALIA - VICTORIA - Port Phillip - Point Lonsdale to Point Nepean - Depths
 Marine Training Services (AA775566)

Aus 144 [NE 20/6/2014]

Insert	accompanying block A	38° 17'.7 S	144° 37'.0 E
	accompanying block B	38° 18'.0 S	144° 38'.7 E

1127* AUSTRALIA - TASMANIA - Piersons Point - ESSA limit
 A Boon (AA776460), Parks and Wildlife Service Tasmania (AA776461)

Aus 171 [859/2014]

Insert	ESSA limit with legend, ESSA (see Note), between	43° 01'.66 S	147° 20'.13 E
		43° 01'.66 S	147° 20'.33 E
		43° 02'.47 S	147° 20'.57 E
		43° 02'.90 S	147° 20'.87 E
		43° 03'.12 S	147° 20'.87 E
		43° 03'.63 S	147° 20'.13 E
		43° 03'.63 S	147° 19'.68 E
		43° 03'.78 S	147° 19'.31 E
		43° 03'.65 S	147° 19'.31 E

Delete	ESSA limit with legend, ESSA (see Note), centred on	43° 03'.5 S	147° 20'.2 E
--------	-----------------------------------------------------	-------------	--------------

Aus 173 [856/2014]

Insert	ESSA limit, between	43° 01'.66 S	147° 20'.13 E
		43° 01'.66 S	147° 20'.33 E
		43° 02'.47 S	147° 20'.57 E
		43° 02'.90 S	147° 20'.87 E
		43° 03'.12 S	147° 20'.87 E
		43° 03'.63 S	147° 20'.13 E
		43° 03'.63 S	147° 19'.68 E
		43° 03'.78 S	147° 19'.31 E
		43° 03'.65 S	147° 19'.31 E

Delete	ESSA limit, centred on	43° 03'.5 S	147° 20'.2 E
--------	------------------------	-------------	--------------

Aus 174 (plan, North West Bay) [330/2014]

Insert	ESSA limit with legend, ESSA (see Note), between	43° 01'.660 S	147° 20'.125 E
		43° 01'.660 S	147° 20'.325 E
		43° 02'.466 S	147° 20'.567 E
		43° 02'.901 S	147° 20'.867 E
		43° 03'.117 S	147° 20'.867 E
		43° 03'.634 S	147° 20'.134 E
		43° 03'.634 S	147° 19'.683 E
		43° 03'.784 S	147° 19'.312 E
		43° 03'.648 S	147° 19'.312 E

Delete	ESSA limit with legend, ESSA (see Note), centred on	43° 03'.5 S	147° 20'.2 E
--------	-----------------------------------------------------	-------------	--------------

1128(T)/2014 AUSTRALIA - NEW SOUTH WALES - Clarence River - Scientific instruments

Date - Until 20 December 2014

Port of Clarence River (Yamba) (AA777099)

Two special light buoys, Q, exist in an area bounded by the following positions:

29° 25'.9 S 153° 21'.9 E

29° 25'.9 S 153° 23'.0 E

29° 25'.2 S 153° 23'.0 E

29° 25'.2 S 153° 21'.9 E.

Chart temporarily affected - Aus 222**1129(T)/2014 AUSTRALIA - NEW SOUTH WALES - Newcastle - Depth information**

Former Notice - 1064(T)/2014 is cancelled

Newcastle Port Corporation (AA776626)

Available depths as at 14 November 2014:

<i>Berth</i>	<i>Metres</i>	<i>Remarks</i>
Eastern Basin 1	11.5	
Eastern Basin 2 North of Ch 450	11.6	
Eastern Basin 2 South of Ch 450	11.3	
Western Basin 3	11.6	
Western Basin 4	11.6	
Channel Berth	9.7	
Dyke 1	12.8	
Dyke 2	12.8	
Dyke 4	16.4	
Dyke 5	16.4	
Dyke 6	5.3	
Mayfield 4 Ch 27 to 266	12.8	
BHP Wharf 6 to Ch 1050	7.3	
Kooragang 2	11.6	
Kooragang 2 North Dolphin Ch 182 to 243	11.6	
Kooragang 2 South Dolphin Ch -92 to 00	11.4	
Kooragang 3 Ch -40 to 00	13.1	
Kooragang 3 Ch 00 to 220	13.3	
Kooragang 4	16.5	
Kooragang 5	16.5	
Kooragang 6	16.3	
Kooragang 7	16.3	
* Kooragang 8	16.4	
* Kooragang 9	16.4	
Kooragang 10	16.4	
Throsby 1 Ch 850 to 1030	8.9	
Carrington Wharf		To be sounded as and when required
Foreshore Park Berth	5.9	
Elgo Wharf		To be sounded as and when required
<i>Channels</i>		
Entrance Approach	17.7	
Entrance Channel (18.0m)	17.8	
Entrance Channel (17.4m)	17.4	
Entrance Channel (16.8m)	16.8	
Entrance Channel (16.2m)	16.2	
Entrance Channel to Horseshoe	15.2	
Horseshoe	15.2	
Steelworks Channel to Swinging Basin	15.2	
* Swinging Basin	15.2	
Hunter River South Arm (Kooragang 6 to buoy 16)	15.2	
Hunter River South Arm (buoy 16 to buoy 20)	15.2	
Basin Cutting	12.6	
Basin Area to Eastern & Western Basin Berths	12.3	
Basin Area to Throsby 1	9.2	
Stockton Crossing	3.6	
* Indicates new or revised entry.		

Chart temporarily affected - Aus 207 - Aus 208

1130(T)/2014 AUSTRALIA - NEW SOUTH WALES - Port Jackson - Western Channel - Scientific instruments
Port Authority of New South Wales Notice 21/2014 (AA776227, AA776644)

Scientific instruments marked by a special spherical light buoy, *Fl.Y.5s*, exists in position 33° 50'.48 S 151° 15'.87 E.

Chart temporarily affected - Aus 200 - Aus 201 - AX 00200T - AX 00201T

1131(T)/2014 AUSTRALIA - QUEENSLAND - Brisbane River - Hamilton Reach - Harbour works

Date - Until 17 December 2014

Maritime Safety Queensland Notice 651(T)/2014 (AA776670)

Piling operations are in progress in the vicinity of position 27° 26'.44 S 153° 02'.99 E.

The barge *Kochi* and support vessels are on site and will monitor VHF Ch 12 and Ch 16.

The works area and all hazards to navigation will be marked by special light buoys.

Mariners are advised to navigate with caution in the area.

Chart temporarily affected - Aus 238

1132(T)/2014 AUSTRALIA - QUEENSLAND - Fraser Island - Rooney Point - Wreck

Maritime Safety Queensland Notice 659(T)/2014 (AA777630)

A wreck exists in position 24° 49'.31 S 153° 08'.19 E.

Mariners are advised to navigate with caution in the area.

Chart temporarily affected - Aus 816 - Aus 817

1133(T)/2014 AUSTRALIA - QUEENSLAND - Hook Island - Light beacon unlit

Maritime Safety Queensland Notice 606(T)/2014 (AA776200)

The south cardinal light beacon, *Q(6)+LFl.15s* (20° 10'.83 S 148° 56'.02 E), is unlit.

Chart temporarily affected - Aus 252 - Aus 824 - Aus 825

1134(T)/2014 AUSTRALIA - QUEENSLAND - Moreton Bay - Spitfire Channel to North West Channel - Scientific instruments

Date - Until 31 January 2015

Maritime Safety Queensland Notice 645(T)/2014 (AA776189)

Subsurface scientific instruments exist on the seabed in the following positions:

26° 54'.02 S 153° 10'.72 E

26° 54'.00 S 153° 11'.05 E

26° 53'.92 S 153° 11'.23 E

27° 02'.33 S 153° 14'.98 E

27° 02'.91 S 153° 16'.23 E

27° 02'.57 S 153° 16'.35 E.

Chart temporarily affected - Aus 235 - Aus 236 - Aus 814 - Aus 815

1135(T)/2014 AUSTRALIA - QUEENSLAND - Moreton Bay - Brisbane River - Depth information*Former Notice - 1074(T)/2014 is cancelled*

Brisbane Port Corporation (AA776262)

Available depths and under keel clearances (UKC) at 7 November 2014:

<i>Berth</i>	<i>Metres</i>	<i>Remarks</i>
Fisherman Islands No12	14.2	
Fisherman Islands No11	14.0	
Fisherman Islands No10	14.1	
Fisherman Islands No9	14.2	
Fisherman Islands No8	14.0	
Fisherman Islands No7	13.9	
Fisherman Islands No6	14.2	
* Fisherman Islands No5	14.1	
* Fisherman Islands No4	13.9	
* Fisherman Islands No3	13.9	
* Fisherman Islands No2	14.1	
* Fisherman Islands No1	14.2	
Fisherman Islands Grain and Woodchip	13.0	
Caltex Fisherman Islands	14.6	
Fisherman Islands Coal	14.0	
Fisherman Islands General Purpose	11.5	
Luggage Point Pump Out Facility	13.0	
* BP Luggage Point	14.3	
Caltex Products	10.3	
* Cement Australia Co Wharf	9.7	
BP Products	11.0	
Viva Energy	11.1	
Graincorp Liquid Terminal	10.3	
Incitec North	10.2	
Incitec South	10.6	
Pinkenba 1	10.4	
Pinkenba 2	10.4	
Riverside Marina	-	
Sugar Terminal	9.8	
Cairncross Fitting Out Wharf	7.1	
Cairncross Breasting Wharf	4.4	
Brisbane Naval Wharf	4.3	
* Maritime No1	9.0	
Hamilton No4	10.3	
Hamilton No1	8.8	
Brisbane Cruise Ship Terminal	9.0	

	<i>Metres</i>	<i>UKC/Remarks</i>
<i>Moreton Bay:</i>		
North West Channel	15.0	2.3 (280m width)
North West Bypass Channel	9.2	1.6
Spitfire Channel	15.0	1.5 (600m width)
East Knoll Bypass Channel	6.0	1.4
East Channel	15.0	1.5 (300m width from western side)
Main Channel (M8 - M9)	10.0	1.8
Entrance Channel (E5 - EBCN)	14.7	1.5

<i>Brisbane River:</i>		
Outer Bar Cutting	14.0	1.46
Inner Bar Cutting	14.0	1.46
Fisherman Islands Swing Basin	14.0	1.3
Fisherman Islands Swing Basin (11.5)	11.5	0.6
River	9.1	0.6 / 0.9 (draft/tide)
Cement Australia Swing Basin	9.1	0.6 / 0.9 (draft/tide)
Pinkenba Swing Basin	9.1	0.6 / 0.9 (draft/tide)
Hamilton Swing Basin	9.1	0.6 / 0.9 (draft/tide)
* Indicates new or revised entry.		

Chart temporarily affected - Aus 235 - Aus 236 - Aus 237 - Aus 238 - Aus 814 - Aus 815

1136(T)/2014 AUSTRALIA - QUEENSLAND - Shoalwater Bay - Live firing; military flying

Date - Until 1 December 2014

Maritime Safety Queensland Notices 632(T)/2014, 661(T)/2014 (AA775135, AA777621)

Live firing and military flying activities will be conducted in the Shoalwater Bay training area during the period 19 to 30 November 2014.

A marine danger area extends to all internal waters bounded by the following positions:

22° 27'.93 S 150° 23'.01 E

22° 19'.64 S 150° 18'.82 E

22° 14'.76 S 150° 20'.31 E

22° 10'.02 S 150° 30'.06 E

22° 24'.20 S 150° 39'.11 E.

All waters, creeks, beaches and other areas within the declared marine danger area are not available for access.

There will be safe anchorages available at Freshwater, Port Clinton, Pearl Bay, Island Head Creek on the East Coast and West Water of Port Clinton.

Mariners are advised to keep clear of this area throughout the above times.

Chart temporarily affected - Aus 260 - Aus 261 - Aus 820 - Aus 822 - AX 00260T - AX 00260S - AX 00820S - AX 00822S

1137(T)/2014 AUSTRALIA - QUEENSLAND - Shoalwater Bay - Live firing completed

Former Notice - 921(T)/2014 is cancelled

Maritime Safety Queensland Notice 528(T)/2014 (AA764435)

Cancel this notice on receipt.

Chart formerly affected - Aus 248 - Aus 260 - Aus 261 - Aus 367 - Aus 820 - Aus 822 - AX 00260T - AX 00260S - AX 00261L - AX 00367S - AX 00822S

1138(T)/2014 AUSTRALIA - QUEENSLAND - St Bees Island - Light unlit

Maritime Safety Queensland Notice 660(T)/2014 (AA777633)

The light, *Fl.2-5s* (20° 56'.36 S 149° 25'.45 E), is unlit.

Chart temporarily affected - Aus 251 - Aus 823 - Aus 824 - AX 00823S

1139(T)/2014 AUSTRALIA - QUEENSLAND - Wide Bay Harbour - The Bar - Bearing altered

Maritime Safety Queensland Notice 658(T)/2014 (AA777659)

The bearing of the leads (25° 47'.03 S 153° 04'.74 E) has been amended to 279°.

Chart temporarily affected - Aus 240 - Aus 815 - Aus 817

1140(T)/2014 PAPUA NEW GUINEA - Kitava Island - Light unlit

National Maritime Safety Authority PNG Notice 34/2014 (AA776433)

The light, *Fl.7-5s 107m 10M* (8° 38'.71 S 151° 20'.30 E), is unlit.

Chart temporarily affected - Aus 515 - Aus 516 - Aus 637 - Aus 4621 (INT 621) - AX 04621U

1141(T)/2014 AUSTRALIA - NORTHERN TERRITORY - Darwin - East Arm - Nav aids

Former Notice - 927(T)/2014 is cancelled

Darwin Port Corporation Notice 129(T)/2014; 144(T)/2014 (AA766141, AA777185)

Nav aids exist as follows:

Number	Position	Remarks
BT01	12° 30'.00 S 130° 52'.82 E	unlit buoy
BT02	12° 30'.25 S 130° 53'.71 E	light buoy, <i>Fl(2)R.5s</i>
BT03	12° 30'.58 S 130° 54'.02 E	light buoy, <i>Fl(2)G.5s</i>

Chart temporarily affected - Aus 28

1142(T)/2014 AUSTRALIA - NORTHERN TERRITORY - Quail Island - Exclusion zone

Former Notice - 1080(T)/2014 is cancelled
Department of Defence (AA777642)

A 5500m radius exclusion zone exists around position 12° 31'.14 S 130° 26'.13 E.

Chart temporarily affected - Aus 29 - Aus 309 - Aus 316 - Aus 722 - AX 00309T - AX 00309U - AX 00722T

1143(T)/2014 AUSTRALIA - WESTERN AUSTRALIA - Barrow Island - Drill rig northwestwards moved

Former Notice - 829(T)/2014 is cancelled
MODU *Ocean America* (AA775944), Chevron Australia Pty Ltd (AA775947)

Cancel this notice on receipt.

Chart formerly affected - Aus 328 - Aus 4723 (INT 723) - AX 04723U

1144(T)/2014 AUSTRALIA - WESTERN AUSTRALIA - Barrow Island - Mooring buoys northwestwards

Viking Seatech (AA776145)

8 yellow mooring buoys, *Fl.3s*, exist within 1NM radius of position 20° 24'.49 S 114° 50'.95 E.

Chart temporarily affected - Aus 328

1145(T)/2014 AUSTRALIA - WESTERN AUSTRALIA - Barrow Island - Pipeline

Former Notice - 650(T)/2014 is cancelled
Date - Until 10 January 2015
Apache Energy Ltd (AA752492), MV *Audacia* (AA775155)

SPV *Audacia* and *Highland Navigator* are conducting pipe laying operations in an area bounded by the following positions:

19° 54'.71 S 115° 23'.06 E
19° 55'.70 S 115° 19'.50 E
20° 01'.16 S 115° 11'.06 E
20° 02'.75 S 115° 12'.00 E
19° 56'.30 S 115° 24'.00 E.

Mariners are advised to navigate with caution in the area.

Chart temporarily affected - Aus 327 - Aus 328

1146(T)/2014 AUSTRALIA - WESTERN AUSTRALIA - Direction Bank to Garden Island - Military exercise

Date - Until 11 December 2014
Department of Defence (AA777559)

Dived operations with a submersible will be conducted as follows:

<i>Date</i>	<i>Position</i>
5 - 6 December 2014	32° 10'.2 S 115° 41'.4 E
7 December 2014	31° 45'.0 S 115° 11'.6 E
8-10 December 2014	31° 50'.0 S 115° 00'.1 E

An exclusion zone exists within a 915m radius of the above positions.

Support vessel MV *Seahorse Standard* will be on site and will display appropriate lights and shapes.

Chart temporarily affected - Aus 117 - Aus 334 - Aus 754 - AX 00117T - AX 00334S - AX 00754S - AXA 0754S

1147(T)/2014 AUSTRALIA - WESTERN AUSTRALIA - Dirk Hartog Island - Seismic survey westwards*Former Notice* - 1089(T)/2014 is cancelled*Date* - Until 28 December 2014

Geoscience Australia (AA772085, AA777147)

Vessel MV *Duke*, with a 8100m towed array, is conducting a survey in the area bounded by the following positions:

27° 12'.0 S 111° 18'.0 E

26° 30'.0 S 112° 26'.0 E

24° 00'.0 S 111° 30'.0 E

24° 15'.0 S 110° 20'.0 E

25° 30'.0 S 110° 45'.0 E

26° 21'.0 S 110° 45'.0 E.

Chart temporarily affected - Aus 331 - Aus 4725 (INT 725)**1148(T)/2014 AUSTRALIA - WESTERN AUSTRALIA - Exmouth Plateau - Drill rig***Date* - Until 20 December 2014MODU *Ocean America* (AA775944), Chevron Australia Pty Ltd (AA775947)Drill rig *Ocean America* is conducting drilling operations in position 20° 07'.55 S 113° 17'.10 E.**Chart temporarily affected - Aus 329 - Aus 4723 (INT 723) - AX 04723U****1149(T)/2014 AUSTRALIA - WESTERN AUSTRALIA - Montebello Islands - Drill rig northwestwards***Former Notice* - 797(T)/2014 is cancelledMODU *Deepwater Frontier* (AA777609), Australian Maritime Safety Authority Auscoast Warning 268/2014 (AA777610)MODU *Deepwater Frontier* is conducting drilling operations in position 19° 48'.59 S 114° 33'.57 E.**Chart temporarily affected - Aus 328 - Aus 4723 (INT 723) - AX 04723U****1150(T)/2014 AUSTRALIA - WESTERN AUSTRALIA - Sahul Banks - Drill rig southwards***Former Notice* - 885(T)/2014 is cancelledMODU *Transocean Legend* (AA776824), Australian Maritime Safety Authority Auscoast Warning 263/2014 (AA776805)Drill rig *Transocean Legend* is conducting drilling operations in position 11° 06'.11 S 126° 45'.09 E.**Chart temporarily affected - Aus 312 - Aus 4721 (INT 721) - AX 00312U - AX 04721U****1151(T)/2014 AUSTRALIA - VICTORIA - Port Phillip - Port Melbourne - Webb Dock - Light beacons**

Victorian Notice 189/2014 (AA774057, AA776260)

The following light beacons have been altered as follows:

<i>Name</i>	<i>Position</i>	<i>New characteristic</i>
No82	37° 51'.03 S 144° 54'.53 E	<i>Fl.R.5s</i>
No84	37° 50'.98 S 144° 54'.56 E	<i>Fl.R.5s</i>
No23	37° 51'.04 S 144° 54'.51 E	<i>Iso.G.4s</i>

Chart temporarily affected - Aus 154**1152(T)/2014 AUSTRALIA - VICTORIA - Port Phillip - Geelong - Barge***Date* - Until 5 January 2015

Victorian Notice 194(T)/2014 (AA776687)

A barge is moored in position 38° 08'.57 S 144° 21'.76 E.

Submerged cables marked by special buoys exist between the pier and the barge.

Mariners are advised to navigate with caution in the area.

Chart temporarily affected - Aus 153

1153(T)/2014 AUSTRALIA - TASMANIA - D'Entrecasteaux Channel - Huon Point - Marine farm

Former Notice - 1102(T)/2014 is cancelled

Date - Until 1 March 2015

Marine and Safety Tasmania Notice 111/2014 (AA775166)

Mariners are advised that works to amend the boundary of the marine farm are in progress.

The amended boundary will be marked by eight special light buoys, *Oc.10s*, in an area bounded by the following positions:

43° 17'.03 S 147° 06'.26 E

43° 17'.03 S 147° 06'.75 E

43° 17'.03 S 147° 07'.18 E

43° 17'.32 S 147° 07'.19 E

43° 17'.69 S 147° 07'.19 E

43° 17'.69 S 147° 06'.75 E

43° 17'.69 S 147° 06'.26 E

43° 17'.33 S 147° 06'.26 E.

Chart temporarily affected - Aus 173 - Aus 795

1154(T)/2014 AUSTRALIA - TASMANIA - Sandy Bay - Light buoy unlit

Marine and Safety Tasmania Notice M110/2014 (AA775101, AA775793)

The light buoy, Q (42° 53'.90 S 147° 20'.87 E), is unlit and has been repositioned to 42° 54'.00 S 147° 20'.98 E.

Chart temporarily affected - Aus 171 - Aus 172

HYDROGRAPHIC REPORTS

<i>Locality</i>	<i>Report</i>	<i>Ship/Authority</i>	<i>Observer</i>
QLD- Gurigur Reef	Wreck	HMAS <i>Benalla</i>	
PNG- Blanche Bay Garove Island	Towers Depths		P Sharp M Bryant
VIC- Great Ship Channel	AIS	<i>Spirit of Tasmania 2</i>	M Davis
TAS- Piersons Point	ESSA		A Boon

NAVIGATION WARNINGS

The following radio messages have been received during the period to 20 November 2014. Signal copies of these messages may be destroyed. It is recommended that the reprint of Navigational Warnings should be kept in a file or a book divided into areas. Cancellation should be made on receipt of signals and reprints.

Rigs on location other than those listed in the latest Section III summary are the subject of Radio Navigational Warnings. Rigs in transit will not be the subject of Warnings.

AUSCOAST WARNING

- 248 Cancelled.
- 249 Cancelled.
- 250 Drill rig *Stena Clyde* in position 14° 35'.65 S 124° 03'.72 E. 2.5M clearance requested.
- 251 Special purpose vessel *Deep Orient* conducting underwater operations in position 13° 47'.18 S 123° 19'.05 E. 2.5M clearance requested.
- 252 Cancelled.
- 253 Cancelled.
- 254 Drill rig *Deepwater Millennium* in position 16° 46'.33 S 118° 14'.22 E. 3M clearance requested.
- 255 Jansz field (19° 48'.56 S 114° 36'.43 E) dewatering operations in progress 1M clearance requested excluding project vessels.
- 256 Cancelled.
- 257 8 yellow buoys, *Fl.3s*, established within 1M of position 20° 24'.49 S 114° 50'.95 E. 2M clearance requested.
- 258 Special purpose vessel *Polarcus Asima* conducting seismic survey in an area bounded by 39° 05'.0 S to 39° 47'.0 S and 142° 46'.0 E to 143° 43'.0 E. 6M clearance requested.
- 259 Cancelled.
- 260 Cancelled.
- 261 Special purpose vessel *Skandi Hercules* conducting ROV pipeline survey from 19° 35'.0 S 116° 08'.29 E to 20° 19'.0 S 116° 43'.0 E. 1M clearance requested.
- 262 Drill rig *Ocean America* in position 20° 07'.54 S 113° 17'.10 E. 2.5M clearance requested.
- 263 Drill rig *Transocean Legend* in position 11° 06'.11 S 126° 45'.09 E. 2.5M clearance requested.
- 264 Cancelled.
- 265 Cancelled.
- 266 Cancelled.
- 267 Pine Peak Island light K3022 in position 21° 31'.15 S 150° 15'.05 E unlit.
- 268 Drill rig *Deepwater Frontier* in position 19° 48'.59 S 114° 33'.57 E. 2.5M clearance requested.

NAVAREA X WARNINGS

- 069 Cancelled.
- 070 Cancelled.
- 071 Cancelled.
- 072 Cancelled.
- 073 Special purpose vessel *Mirai/JNSR* conducting underwater operations in an area bounded by 00° 00'.0 S to 10° 00'.0 S and 145° 00'.0 E to 170° 00'.0 E. 2.5M clearance requested.

Navigational warnings in force as at 200001UTC NOV 14.

Auscoast

2014 220 222 224 225 226 227 228 231 235 239 243 246 247 250 251 254 255 257 258 261 262 263 266 267 268

Navarea X

2014 068 073

Summary of mobile drilling rigs as at 200001UTC NOV 14.

<i>Name</i>	<i>Position</i>
Nan Hai 6	09° 47'.74 S 130° 13'.68 E
Transocean Legend	11° 06'.11 S 126° 45'.09 E
Jack Bates	10° 38'.61 S 126° 11'.02 E
Stena Clyde	14° 35'.65 S 124° 03'.72 E
Noble Clyde Boudreaux	13° 49'.00 S 123° 19'.35 E
Deepwater Millennium	16° 46'.36 S 118° 14'.21 E
Atwood Osprey	19° 56'.70 S 115° 19'.50 E
Atwood Eagle	19° 58'.22 S 115° 12'.76 E
Ocean America	20° 07'.54 S 113° 17'.10 E
Deepwater Frontier	19° 47'.56 S 114° 38'.96 E
Atwood Falcon	21° 20'.95 S 114° 04'.40 E

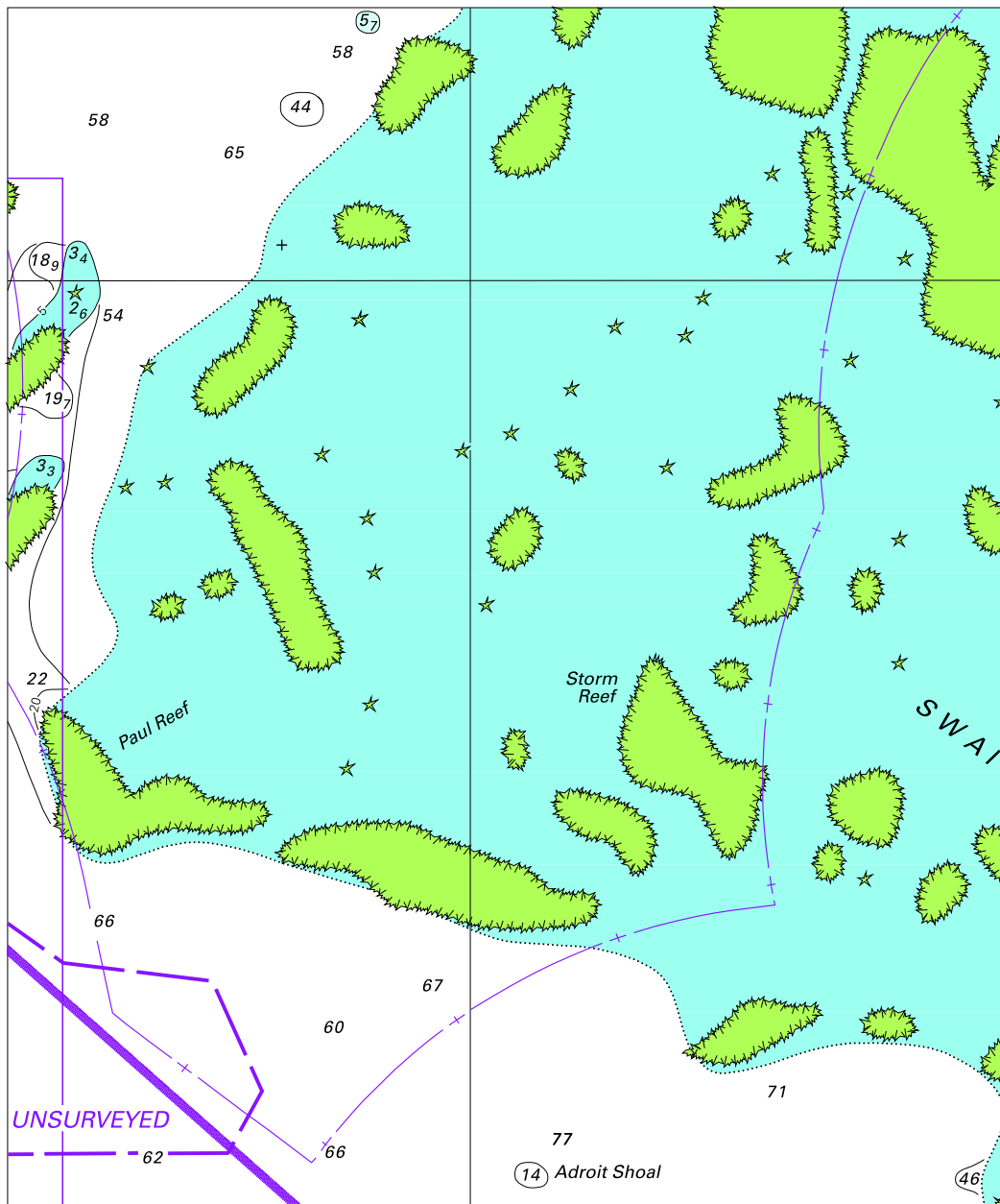
NAVAREA XIV WARNINGS

084 Cancelled.
 085 Pacific Ocean, Melanesian Basin. Underwater operations by RV Mirai between 4 Nov and 18 Dec 14 in an area bounded by:
 10° 40'.0 N 165° 00'.0 E
 10° 00'.0 S 165° 00'.0 E
 10° 00'.0 S 150° 00'.0 E
 10° 00'.0 N 150° 00'.0 E
 Cancel this message 190001 UTC Dec 14.

Navarea XIV warnings in force as at 200001UTC NOV 14.

2014 085

To accompany Australian Notice to Mariners 1109/2014

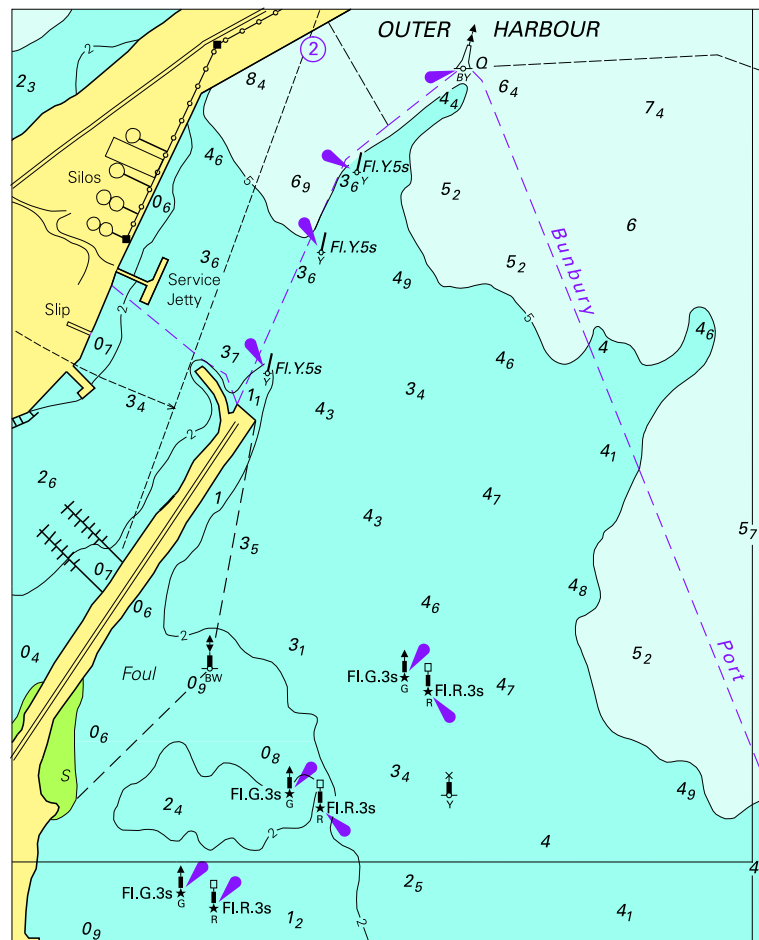


Block for chart Aus 490

© Commonwealth of Australia 2014

(137.0 x 165.2mm)

To accompany Australian Notice to Mariners 1119/2014

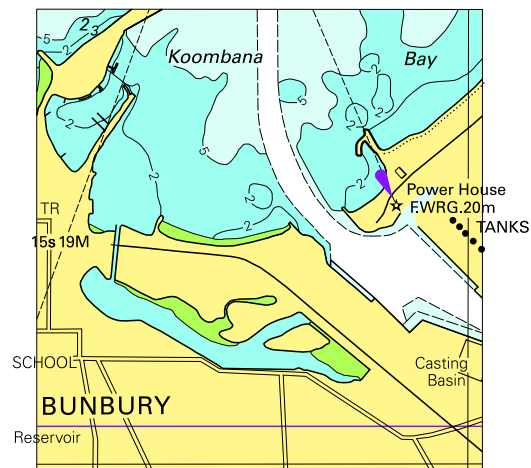


© Commonwealth of Australia 2014

Block A for chart Aus 115

(100.0 x 123.6mm)

To accompany Australian Notice to Mariners 1119/2014

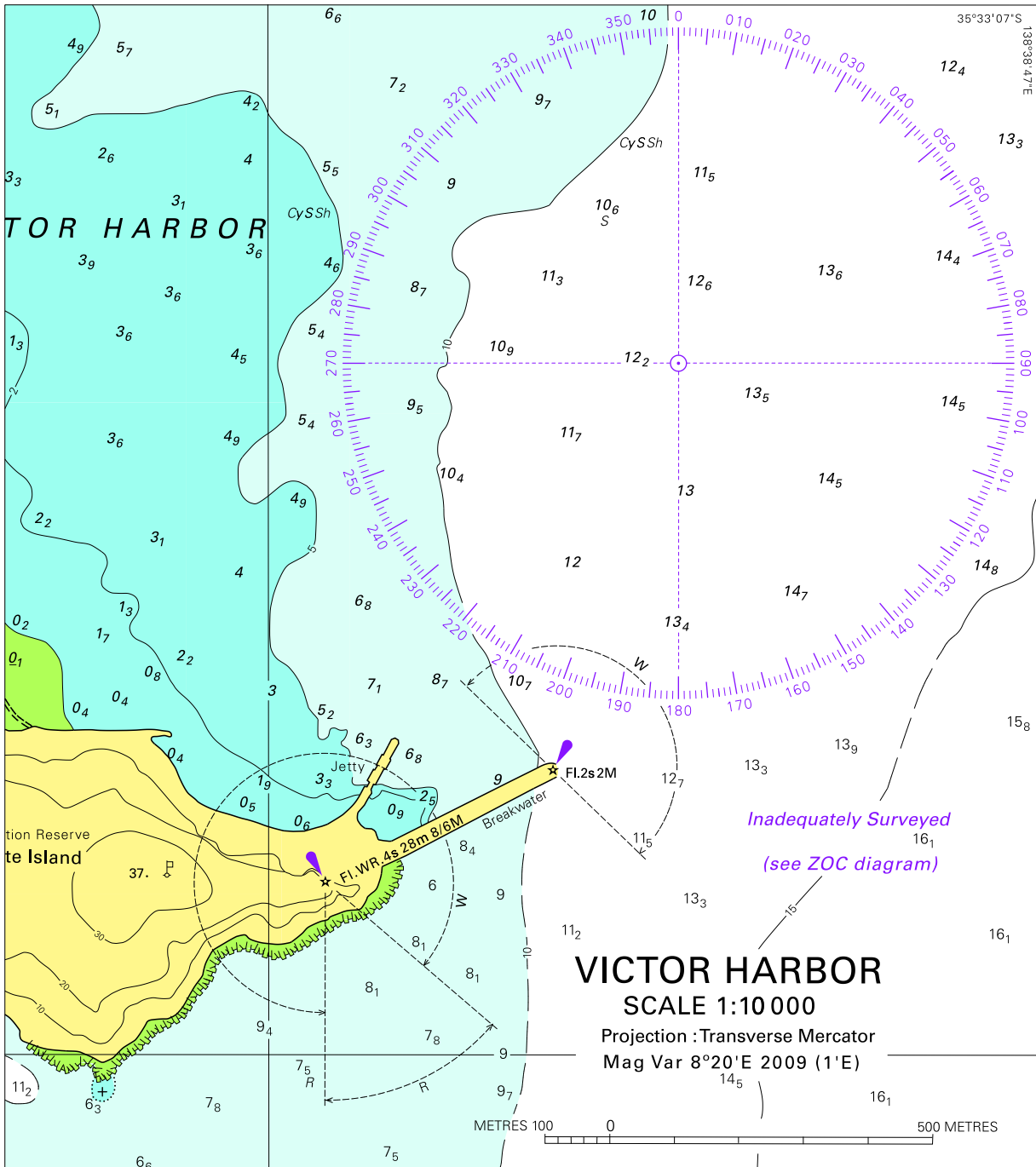


© Commonwealth of Australia 2014

Block B for Aus 115

(58.94mm x 61.17mm)

To accompany Australian Notice to Mariners 1124/2014

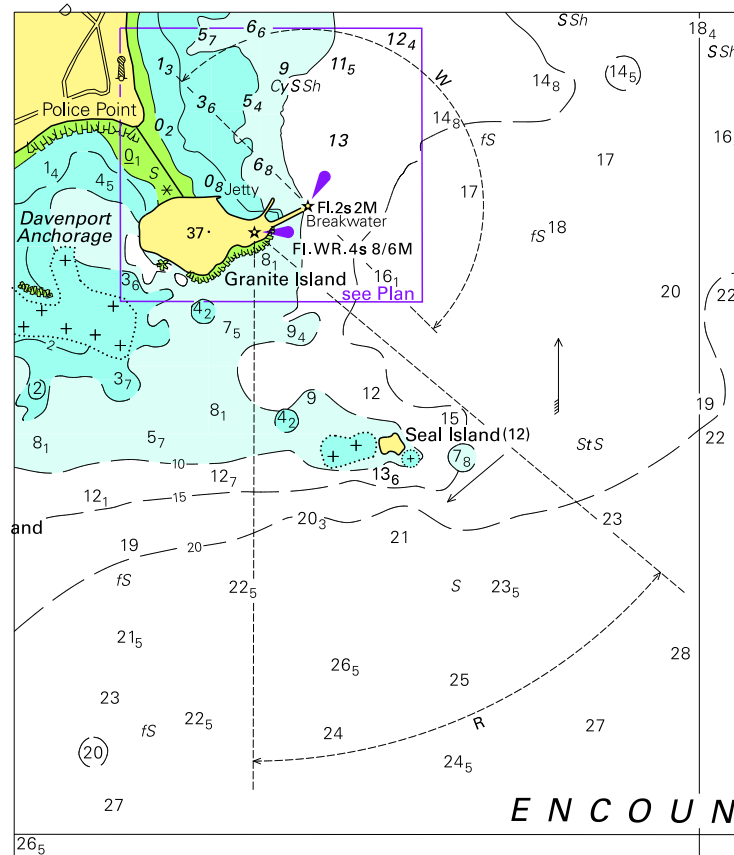


Block A for chart Aus 127

© Commonwealth of Australia 2014

(160.5 x 181.2mm)

To accompany Australian Notice to Mariners 1124/2014

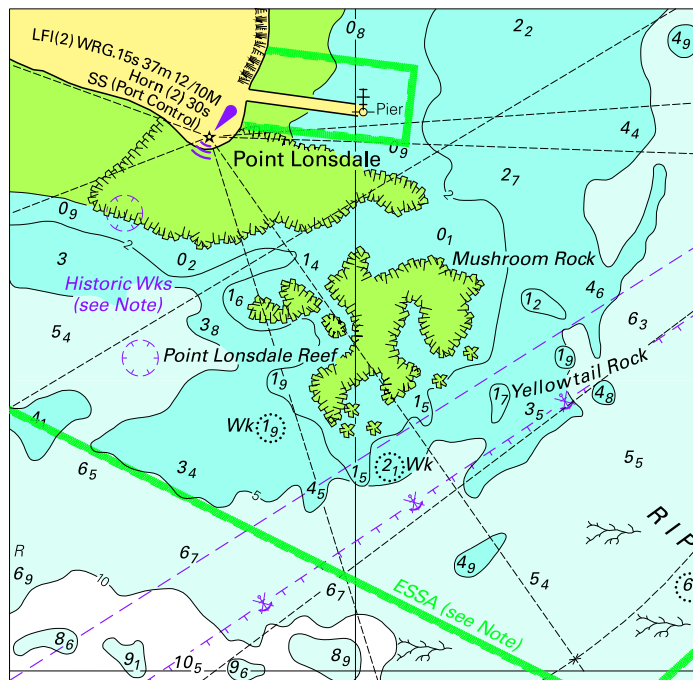


© Commonwealth of Australia 2014

Block B for chart Aus 127

(96.4 x 111.8mm)

To accompany Australian Notice to Mariners 1126/2014

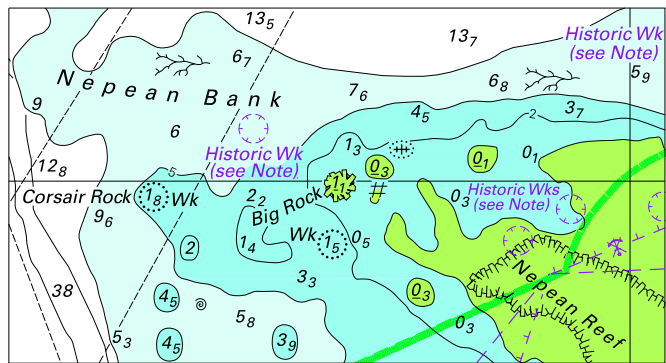


© Commonwealth of Australia 2014

Block A for chart Aus 144

(91.5 x 89.2mm)

To accompany Australian Notice to Mariners 1126/2014



© Commonwealth of Australia 2014

Block B for chart Aus 144

(86.8 x 46.9mm)