



7 November 2014

Edition 22

Australian Notices to Mariners are the authority for correcting Australian Charts and Publications

---

# AUSTRALIAN NOTICES TO MARINERS

**Notices 1049 - 1103**



Published fortnightly by the Australian Hydrographic Service

Commodore B.K. BRACE RAN  
*Hydrographer of Australia*

---

## SECTIONS.

- I. Australian Notices to Mariners, including blocks and notes.
- II. Hydrographic Reports.
- III. Navigational Warnings.

## SUPPLEMENTS.

- I. Tracings
- II. Cumulative List of Australian Notices to Mariners.
- III. Cumulative List of Temporary and Preliminary Australian Notices to Mariners.
- IV. Temporary and Preliminary Notices in force.
- V. Amendments to Admiralty List of Lights and Fog Signals (Vol K), Radio Signals (NP 281(2), 282, 283(2), 285, 286(4)) and Sailing Directions (NP 9, 13, 14, 15, 33, 34, 35, 36, 39, 44, 51, 60, 61, 62, 100, 136).

---

© Commonwealth of Australia 2014

This work is copyright. Apart from any use permitted under the Copyright Act 1968, no part may be reproduced by any process, adapted, communicated or commercially exploited without prior written permission from The Commonwealth represented by the Australian Hydrographic Service.

## IMPORTANT NOTICE

This edition of Notices to Mariners includes all significant information affecting AHS products which the AHS has become aware of since the last edition. All reasonable efforts have been made to ensure the accuracy and completeness of the information, including third party information, on which these updates are based. The AHS regards third parties from which it receives information as reliable, however the AHS cannot verify all such information and errors may therefore exist. The AHS does not accept liability for errors in third party information.

---

## GENERAL INSTRUCTIONS

The substance of these notices should be inserted on the charts affected.

Bearings are referred to the true compass and are reckoned clockwise from North; those relating to lights are given as seen by an observer from seaward. Positions quoted in permanent notices relate to the horizontal datum for the chart(s). When preliminary or temporary notices affect multiple charts, positions will be provided in relation to only one horizontal datum and that datum will be specified. When the multiple charts do not have a common horizontal datum, mariners will be required to adjust the position(s) for those charts not on the specified datum. The range quoted for a light is its nominal range. Depths are with reference to the chart datum of each chart. Heights are above mean high water springs or mean higher high water, as appropriate.

The capital letter (P) or (T) after the number of any notice denotes a preliminary or temporary notice respectively, which are contained separately at the end of the permanent notices. A star (\*) adjacent to the number of a notice indicates that the notice is based on original information.

---

## REPORTING OF DANGERS

Mariners are particularly requested to notify the AUSTRALIAN HYDROGRAPHIC SERVICE, Locked Bag 8801 Wollongong, NSW 2500 (Fax 02-4223 6599, e-mail [Hydro.NTM@defence.gov.au](mailto:Hydro.NTM@defence.gov.au) or, alternatively by filling in and submitting the [Hydrographic Notes](#) forms located on the web site – [www.hydro.gov.au](http://www.hydro.gov.au)), immediately on the discovery of new dangers or suspected dangers to navigation. For changes or defects in aids to navigation notify AusSAR (Fax 02-6230 6868 or email [rccaus@amsa.gov.au](mailto:rccaus@amsa.gov.au)).

---

## AUTHORISED USE

Copies of Australian notices are available free of charge from the Australian Hydrographic Service (AHS) website ([www.hydro.gov.au](http://www.hydro.gov.au)) and through the eNotices (email) service ([www.hydro.gov.au/enotices/enotices.htm](http://www.hydro.gov.au/enotices/enotices.htm)).

Individual Notices may be copied for the purpose of inserting Notice substance on official charts and publications. Paper copies may be printed by chart agents and distributed to customers on a cost recovery basis. Participating chart agents are listed on the AHS website as providing a 'Paper Notices to Mariners' service ([www.hydro.gov.au/prodserv/distributors/distributors.htm](http://www.hydro.gov.au/prodserv/distributors/distributors.htm)). Copies of the notices may not be sold for profit without prior written agreement.

# NUMERICAL INDEX OF NOTICES TO MARINERS

## Edition No 22

Notices	Aus Chart, INT Chart, ENC Cell, AHP, BA Pubs
1049	Aus 26, 29, 151, 301, 722, 834, AU 5684P2, 5684P3
1050	Aus 245, 271, 272
1051	Aus 236
1052	Aus 256, 257, 827
1053	Aus 23, 722, AX 00722T
1054	Aus 22
1055	Aus 26
1056	Aus 58
1057	Aus 119
1058	Aus 143, 157, 158
1059	Aus 154
1060	Aus 143, 158
1061	Aus 150
1062	Aus 177
1063(T)	Aus 196, 198, 199
1064(T)	Aus 207, 208
1065(T)	Aus 219, 489, 809, 810, 811, 812, 4643, INT 643, AX 00809S
1066(T)	Aus 200, 202, AX 00202T
1067(T)	Aus 255
1068(T)	Aus 262, 263, 264, 830, AX 00262T, AXA 0830T
1069(T)	Aus 249, 250, AX 00249S
1070(T)	Aus 244, 245, 246, 271, 272, 819
1071(T)	Aus 256
1072(T)	Aus 256
1073(P)	Aus 834, 835, 836
1074(T)	Aus 235, 236, 237, 238, 814, 815
1075(T)	Aus 815
1076(P)	Aus 367, 490, 4621, 4635, INT 621, 635, AX 04621U
1077(T)	Aus 256, 257
1078(T)	Aus 386, 387
1079(T)	Aus 309, 722, AX 00309U, 72309, 72722
1080(T)	Aus 29, 309, 316, 722, AX 00309T, 00309U, 00722T
1081(T)	Aus 24, 26, 27, 29, 309, 314, 315, 316, 318, 319, 320, 722, 728, 4721, 4722, INT 721, 722, AX 00026T, 00309U, 00309T, 00314U, 00315U, 00319U, 00722T, 04721U, 04722U
1082(T)	Aus 314, 319, 4721, 4722, INT 721, 722, AX 00314U, 00319U, 04721U, 04722U
1083(T)	Aus 328
1084(P)	Aus 110, 118, 336, 337, 759, AX 00110S, 00118S
1085(T)	Aus 319, 320, AX 00319U
1086(T)	Aus 319, 320, 322, AX 00319U, 00322U
1087(T)	Aus 319, 320, AX 00319U
1088(T)	Aus 320, 4721, 4722, INT 721, 722, AX 04721U, 04722U
1089(T)	Aus 331, 4725, INT 725
1090(T)	Aus 52, 53, 739
1091(T)	Aus 328, 329, 744
1092(P)	Aus 328, 329, 744, 745, 4723, 4725, INT 723, 725, AX 04723U
1093(T)	Aus 52, 53, 54
1094(T)	Aus 52, 54
1095(T)	Aus 52, 54
1096(T)	Aus 53, 739, 740
1097(T)	Aus 327
1098(T)	Aus 127, 347
1099(T)	Aus 135
1100(T)	Aus 157
1101(T)	Aus 150, 151, 788, 801
1102(T)	Aus 173, 795
1103(T)	Aus 170, 766, 797

## NUMERICAL INDEX OF CHARTS AFFECTED

### Edition No 22

Aus Chart	Notices	Aus Chart	Notices
Aus 22	1054	Aus 318	1081(T)
Aus 23	1053	Aus 319	1081(T), 1082(T), 1085(T), 1086(T), 1087(T)
Aus 24	1081(T)	Aus 320	1081(T), 1085(T), 1086(T), 1087(T), 1088(T)
Aus 26	1049, 1055, 1081(T)	Aus 322	1086(T)
Aus 27	1081(T)	Aus 327	1097(T)
Aus 29	1049, 1080(T), 1081(T)	Aus 328	1083(T), 1091(T), 1092(P)
Aus 52	1090(T), 1093(T), 1094(T), 1095(T)	Aus 329	1091(T), 1092(P)
Aus 53	1090(T), 1093(T), 1096(T)	Aus 331	1089(T)
Aus 54	1093(T), 1094(T), 1095(T)	Aus 336	1084(P)
Aus 58	1056	Aus 337	1084(P)
Aus 110	1084(P)	Aus 347	1098(T)
Aus 118	1084(P)	Aus 367	1076(P)
Aus 119	1057	Aus 386	1078(T)
Aus 127	1098(T)	Aus 387	1078(T)
Aus 135	1099(T)	Aus 489	1065(T)
Aus 143	1058, 1060	Aus 490	1076(P)
Aus 150	1061, 1101(T)	Aus 722	1049, 1053, 1079(T), 1080(T), 1081(T)
Aus 151	1049, 1101(T)	Aus 728	1081(T)
Aus 154	1059	Aus 739	1090(T), 1096(T)
Aus 157	1058, 1100(T)	Aus 740	1096(T)
Aus 158	1058, 1060	Aus 744	1091(T), 1092(P)
Aus 170	1103(T)	Aus 745	1092(P)
Aus 173	1102(T)	Aus 759	1084(P)
Aus 177	1062	Aus 766	1103(T)
Aus 196	1063(T)	Aus 788	1101(T)
Aus 198	1063(T)	Aus 795	1102(T)
Aus 199	1063(T)	Aus 797	1103(T)
Aus 200	1066(T)	Aus 801	1101(T)
Aus 202	1066(T)	Aus 809	1065(T)
Aus 207	1064(T)	Aus 810	1065(T)
Aus 208	1064(T)	Aus 811	1065(T)
Aus 219	1065(T)	Aus 812	1065(T)
Aus 235	1074(T)	Aus 814	1074(T)
Aus 236	1051, 1074(T)	Aus 815	1074(T), 1075(T)
Aus 237	1074(T)	Aus 819	1070(T)
Aus 238	1074(T)	Aus 827	1052
Aus 244	1070(T)	Aus 830	1068(T)
Aus 245	1050, 1070(T)	Aus 834	1049, 1073(P)
Aus 246	1070(T)	Aus 835	1073(P)
Aus 249	1069(T)	Aus 836	1073(P)
Aus 250	1069(T)	Aus 4621	1076(P)
Aus 255	1067(T)	Aus 4635	1076(P)
Aus 256	1052, 1071(T), 1072(T), 1077(T)	Aus 4643	1065(T)
Aus 257	1052, 1077(T)	Aus 4721	1081(T), 1082(T), 1088(T)
Aus 262	1068(T)	Aus 4722	1081(T), 1082(T), 1088(T)
Aus 263	1068(T)	Aus 4723	1092(P)
Aus 264	1068(T)	Aus 4725	1089(T), 1092(P)
Aus 271	1050, 1070(T)	AX 00026T	1081(T)
Aus 272	1050, 1070(T)	AX 00110S	1084(P)
Aus 301	1049	AX 00118S	1084(P)
Aus 309	1079(T), 1080(T), 1081(T)	AX 00202T	1066(T)
Aus 314	1081(T), 1082(T)	AX 00249S	1069(T)
Aus 315	1081(T)	AX 00262T	1068(T)
Aus 316	1080(T), 1081(T)	AX 00309T	1080(T), 1081(T)

Aus Chart	Notices
AX 00309U	<a href="#">1079(T)</a> , <a href="#">1080(T)</a> , <a href="#">1081(T)</a>
AX 00314U	<a href="#">1081(T)</a> , <a href="#">1082(T)</a>
AX 00315U	<a href="#">1081(T)</a>
AX 00319U	<a href="#">1081(T)</a> , <a href="#">1082(T)</a> , <a href="#">1085(T)</a> , <a href="#">1086(T)</a> , <a href="#">1087(T)</a>
AX 00322U	<a href="#">1086(T)</a>
AX 00722T	<a href="#">1053</a> , <a href="#">1080(T)</a> , <a href="#">1081(T)</a>
AX 00809S	<a href="#">1065(T)</a>
AX 04621U	<a href="#">1076(P)</a>
AX 04721U	<a href="#">1081(T)</a> , <a href="#">1082(T)</a> , <a href="#">1088(T)</a>
AX 04722U	<a href="#">1081(T)</a> , <a href="#">1082(T)</a> , <a href="#">1088(T)</a>
AX 04723U	<a href="#">1092(P)</a>
AX 72309	<a href="#">1079(T)</a>
AX 72722	<a href="#">1079(T)</a>
AXA 0830T	<a href="#">1068(T)</a>

INT Chart	Notices
INT 621	<a href="#">1076(P)</a>
INT 635	<a href="#">1076(P)</a>
INT 643	<a href="#">1065(T)</a>
INT 721	<a href="#">1081(T)</a> , <a href="#">1082(T)</a> , <a href="#">1088(T)</a>
INT 722	<a href="#">1081(T)</a> , <a href="#">1082(T)</a> , <a href="#">1088(T)</a>
INT 723	<a href="#">1092(P)</a>
INT 725	<a href="#">1089(T)</a> , <a href="#">1092(P)</a>

ENC Cell	Notices
AU 5684P2	<a href="#">1049</a>
AU 5684P3	<a href="#">1049</a>

**1049 AUSTRALIA - Product**

Australian Hydrographic Service (AA773020), UKHO (AA772870)

**New Edition**

<i>Chart</i>	<i>Published</i>	<i>Title and description of amendments</i>	<i>Scale</i>	<i>Index Chart</i>	<i>Price</i>
Aus 151	7/11/2014	Australia - South Coast - Victoria - Western Port (Entrance and North Arm) 38° 12'·92 S – 38° 33'·92 S 145° 01'·38 E – 145° 18'·38 E Inset: 38° 12'·62 S – 38° 18'·92 S 145° 16'·27 E – 145° 26'·68 E <i>New edition incorporating latest surveys.</i>	1:37 500	Aus 5001	\$35.00
Aus 301	7/11/2014	Australia - North Coast - Queensland - Booby Island to Archer River 10° 33'·91 S – 13° 38'·72 S 140° 29'·30 E – 142° 28'·08 E <i>New edition with general updating throughout.</i>	1:300 000	Aus 5000	\$35.00

**New Electronic Navigation Chart (Aus ENC)**

<i>Cell Name</i>	<i>Released</i>	<i>Title</i>
AU5684P2	November 2014	Papua New Guinea - Bougainville - Buka Passage
AU5684P3	November 2014	Papua New Guinea - Bougainville Island - Torokina

**New edition to be published shortly**

<i>Chart</i>	<i>Title</i>	<i>Scale</i>	<i>Expected Publication Date</i>
Aus 26	Australia - North Coast - Northern Territory - Approaches to Port Darwin	1:50 000	21 November 2014
Aus 29	Australia - North Coast - Northern Territory - Approaches to Bynoe Harbour and Port Patterson	1:50 000	21 November 2014
Aus 722	Australia - North Coast - Northern Territory - Beagle Gulf and Clarence Strait	1:150 000	21 November 2014
Aus 834	Australia - East Coast - Queensland - Claremont Isles to Cape Weymouth	1:150 000	21 November 2014

**Admiralty publication**

<i>NP No</i>	<i>Title</i>	<i>Date</i>	<i>Remarks</i>
NP284	Admiralty List of Radio Signals. Meteorological Observation Stations.	6/11/2014	The 2013/14 Edition is cancelled.

For further details refer to the AHS website at [www.hydro.gov.au](http://www.hydro.gov.au) for new edition and new chart stock arrival information. When placing orders with a chart agent, mariners should advise whether their order pertains to the current edition or the new edition.

**1050\* AUSTRALIA - QUEENSLAND - Gladstone - Fishermans Landing Wharves - Bearing**

Maritime Safety Queensland (AA772088)

**Aus 245 [900/2014]**

Insert	a dashed line in a direction 104·8° for a distance of 350m, thence a continuous line for 1600m, with legend 284·8°, emanating from light	23° 47'.301 S	151° 10'.553 E
--------	--	---------------	----------------

Delete	dashed line with legend, 281·8°, emanating from light	23° 47'.30 S	151° 10'.55 E
--------	---	--------------	---------------

**Aus 271 [844/2014]**

Amend	bearing to 284·8°	23° 47'.53 S	151° 11'.54 E
-------	-------------------	--------------	---------------

**Aus 272 [900/2014]**

Amend	bearing to 284·8°	23° 47'.53 S	151° 11'.54 E
-------	-------------------	--------------	---------------

**1051\* AUSTRALIA - QUEENSLAND - Moreton Bay - Mud Island - Anchoring and fishing prohibited area; radio reporting point**

UKHO (AA771727)

**Aus 236 [810/2014]**

Insert	anchoring and fishing prohibited limit, between	27° 17'.05 S	153° 11'.69 E
		27° 18'.59 S	153° 12'.48 E
		27° 18'.66 S	153° 12'.62 E
		27° 18'.86 S	153° 14'.91 E
		27° 15'.82 S	153° 14'.50 E
		27° 17'.05 S	153° 11'.69 E

Delete	anchoring and fishing prohibited area, centred on	27° 17'.5 S	153° 13'.5 E
	radio reporting point, centred on	27° 18'.4 S	153° 12'.7 E

**1052\* AUSTRALIA - QUEENSLAND - Townsville - Spoil ground**

Port of Townsville Limited (AA772112, AA772971)

**Aus 256 [812/2014]**

Delete	spoil ground, centred on	19° 14'.0 S	146° 52'.5 E
--------	--------------------------	-------------	--------------

**Aus 257 [846/2014]**

Delete	spoil ground, centred on	19° 14'.4 S	146° 51'.6 E
--------	--------------------------	-------------	--------------

**Aus 827 [NE 4/7/2014]**

Delete	spoil ground, centred on	19° 14'.0 S	146° 52'.5 E
--------	--------------------------	-------------	--------------

**1053\* AUSTRALIA - NORTHERN TERRITORY - Apsley Strait - Light buoy**

Former Notice - 641(T)/2014 is cancelled

Department of Transport NT (AA732851)

**Aus 23 [362/2014]**

Delete	light buoy	11° 44'.2 S	130° 37'.7 E
--------	------------	-------------	--------------

**Aus 722 [953/2014]**

Delete	light buoy	11° 44'.2 S	130° 37'.7 E
--------	------------	-------------	--------------

**AX 00722T [953/2014]**

Delete	light buoy	11° 44'.2 S	130° 37'.7 E
--------	------------	-------------	--------------

**1054\* AUSTRALIA - NORTHERN TERRITORY - Apsley Strait - Depths; infrastructure**

Gardline Marine Sciences Pty Ltd (DHDB 2698366)

**Aus 22 [362/2014]**

Insert	accompanying block A	11° 18'.0 S	130° 21'.0 E
	accompanying block B	11° 23'.0 S	130° 24'.0 E

**Aus 22 (plan, Port Melville) [362/2014]**

Insert	accompanying block C	11° 25'.2 S	130° 24'.9 E
--------	----------------------	-------------	--------------

**1055\* AUSTRALIA - NORTHERN TERRITORY - Darwin - Bladin Point - Infrastructure; depths; light beacons**

Darwin Port Corporation Notice 71/2014 (AA741335)

**Aus 26 [771/2014]**

Insert	accompanying block	12° 30'.0 S	130° 55'.0 E
--------	--------------------	-------------	--------------

**1056\* AUSTRALIA - WESTERN AUSTRALIA - Dampier - Light buoys**

Pilbara Ports Authority Notice 40/2014 (AA771151)

**Aus 58 [1002/2014]**

Insert	out of position east cardinal pillar light buoy, Q(3)10s, with topmark	20° 31'.857 S	116° 42'.275 E
	out of position east cardinal pillar light buoy, VQ(3)10s, with topmark	20° 35'.630 S	116° 41'.433 E

**1057\* AUSTRALIA - WESTERN AUSTRALIA - Esperance - Nav aids; infrastructure**

Department of Transport WA Notice 173/2014 (AA764155, AA771041, AA770922)

**Aus 119 [850/2014]**

Insert	east cardinal spar light buoy, Q(3)10s, with topmark	33° 50'.42 S	121° 59'.25 E
	out of position south cardinal spar light buoy, Q(6)+LFl.15s, with topmark	33° 53'.27 S	121° 54'.39 E

**Aus 119 (plan, Esperance) [850/2014]**

Insert	light, F.Bu 3M	33° 51'.830 S	121° 53'.664 E
	continuous line, between	33° 51'.823 S	121° 53'.635 E
		33° 51'.830 S	121° 53'.664 E
	north cardinal spar light buoy, Q, with topmark	33° 53'.115 S	121° 54'.460 E

**1058\* AUSTRALIA - VICTORIA - Port Phillip - West Sand to Swan Island - Nav aids; historic wreck**

Victorian Notices 176/2014, 186/2014 (AA771234, AA772801), Australian Hydrographic Service (AA771235)

**Aus 143 [1007/2014]**

Insert	restricted area circle, centred on	38° 12'.48 S	144° 43'.81 E
--------	------------------------------------	--------------	---------------

Substitute	special light beacon, Fl.Y.5s, with topmark for beacon	38° 12'.2 S	144° 43'.4 E
------------	--	-------------	--------------

Amend	legend to <i>Historic Wks (see Note)</i>	38° 12'.4 S	144° 43'.0 E
-------	--	-------------	--------------

**Aus 157 [628/2014]**

Substitute	special light beacon, Fl.Y.5s, with topmark for beacon	38° 12'.16 S	144° 43'.40 E
------------	--	--------------	---------------

**Aus 158 [408/2014]**

Insert	restricted area circle with magenta legend, <i>Historic Wk (see Note)</i> , centred on	38° 12'.483 S	144° 43'.812 E
--------	--	---------------	----------------

Substitute	special light beacon, Fl.Y.5s, with topmark for beacon	38° 12'.16 S	144° 43'.40 E
------------	--	--------------	---------------

Delete	beacon	38° 12'.48 S	144° 43'.80 E
	light beacon	38° 15'.45 S	144° 41'.04 E

**1059\* AUSTRALIA - VICTORIA - Port Phillip - Dock Pier - Light**

Port of Melbourne Corporation (AA772330)

**Aus 154 [817/2014]**

Amend	light to 2F.R (hor)	37° 51'.72 S	144° 54'.84 E
-------	---------------------	--------------	---------------

**1060\* AUSTRALIA - VICTORIA - Port Phillip - Mud Islands - Unexploded ordnance northeastwards**

UKHO (AA769842)

**Aus 143 [1058/2014]**

Insert	magenta legend <i>Unexploded Ordnance (see Note)</i> , centred on	38° 11'.50 S	144° 52'.00 E
	magenta legend <i>Unexploded Ordnance (see Note)</i> , centred on	38° 13'.60 S	144° 49'.74 E

**Aus 158 [1058/2014]**

Insert	magenta legend <i>Unexploded Ordnance (see Note)</i> , centred on	38° 13'.75 S	144° 49'.74 E
--------	---	--------------	---------------

**1061\* AUSTRALIA - VICTORIA - Western Port - Western Channel - Depths**

Fugro LADS Corporation (DHDB 2349668)

**Aus 150 [1008/2014]**

Insert	accompanying block A	38° 28'.0 S	145° 04'.0 E
	accompanying block B	38° 27'.0 S	145° 11'.0 E



**1062\* AUSTRALIA - TASMANIA - Hells Gates - Depths; ZOC diagram**  
 HydroSurvey Australia (DHDB 2705864)

**Aus 177 [858/2014]**

Insert accompanying ZOC diagram  
 accompanying block A

42° 24'.0 S 145° 18'.0 E  
 42° 13'.0 S 145° 14'.0 E

**Aus 177 (plan, Hells Gates) [858/2014]**

Insert accompanying block B

42° 13'.0 S 145° 13'.0 E

**1063(T)/2014 AUSTRALIA - NEW SOUTH WALES - Botany Bay - Depth information**

Former Notice - 217(T)/2014 is cancelled  
 Sydney Ports Corporation (AA724449)

Available depths as at 3 November 2014:

<i>Channel/Berth</i>	<i>Metres</i>
Main Channel to Molineux Point	15.6
Port Botany Swinging Basin	15.9
Kurnell 2 Approaches	12.1
Kurnell 1 & 3 Approaches	12.8
Kurnell No1	12.8
Kurnell No2	12.1
Kurnell No3	14.0
Hayes Dock (channel)	16.4
Hayes No1	16.4
Hayes No2	16.4
Hayes No3	16.4
Hayes No4	16.4
Brotherson Dock No5	16.4
Brotherson Dock No6	16.4
* Brotherson Dock No7	13.9
* Brotherson Dock No8	13.8
* Brotherson Dock No9	13.3
* Brotherson Dock No10	12.7
* Brotherson Dock No11	12.3
* Brotherson Dock No12	14.5
Bulk Liquids 1	18.3
Bulk Liquids 2	19.0
* Indicates new or revised entry.	

**Chart temporarily affected - Aus 196 - Aus 198 - Aus 199**

**1064(T)/2014 AUSTRALIA - NEW SOUTH WALES - Newcastle - Depth information**

Former Notice - 1011(T)/2014 is cancelled  
Newcastle Port Corporation (AA774869)

Available depths as at 27 October 2014:

<i>Berth</i>	<i>Metres</i>	<i>Remarks</i>
Eastern Basin 1	11.5	
Eastern Basin 2 North of Ch 450	11.6	
Eastern Basin 2 South of Ch 450	11.3	
Western Basin 3	11.6	
Western Basin 4	11.6	
Channel Berth	9.7	
Dyke 1	12.8	
Dyke 2	12.8	
Dyke 4	16.4	
Dyke 5	16.4	
Dyke 6	5.3	
Mayfield 4 Ch 27 to 266	12.8	
BHP Wharf 6 to Ch 1050	7.3	
Kooragang 2	11.6	
Kooragang 2 North Dolphin Ch 182 to 243	11.6	
Kooragang 2 South Dolphin Ch -92 to 00	11.4	
* Kooragang 3 Ch -40 to 00	13.1	
* Kooragang 3 Ch 00 to 220	13.3	
Kooragang 4	16.5	
Kooragang 5	16.5	
Kooragang 6	16.3	
Kooragang 7	16.3	
Kooragang 8	16.2	
Kooragang 9	16.3	
* Kooragang 10	16.4	
Throsby 1 Ch 850 to 1030	8.9	
Carrington Wharf		To be sounded as and when required
Foreshore Park Berth	5.9	
Elgo Wharf		To be sounded as and when required
<i>Channels</i>		
Entrance Approach	17.7	
Entrance Channel (18.0m)	17.8	
Entrance Channel (17.4m)	17.4	
Entrance Channel (16.8m)	16.8	
Entrance Channel (16.2m)	16.2	
Entrance Channel to Horseshoe	15.2	
Horseshoe	15.2	
Steelworks Channel to Swinging Basin	15.2	
* Swinging Basin	15.0	
Hunter River South Arm (Kooragang 6 to buoy 16)	15.2	
Hunter River South Arm (buoy 16 to buoy 20)	15.2	
Basin Cutting	12.6	
Basin Area to Eastern & Western Basin Berths	12.3	
Basin Area to Throsby 1	9.2	
Stockton Crossing	3.6	
* Indicates new or revised entry.		

**Chart temporarily affected - Aus 207 - Aus 208**

**1065(T)/2014 AUSTRALIA - NEW SOUTH WALES - Newcastle - Live firing**

Date - Until 15 November 2014

Department of Defence (AA774108)

Live firing activities will be conducted in the Williamstown Air Weapons Range, R574, during the period 9 to 14 November 2014.

A marine danger area extends to all internal waters bounded by 32° 44'.03 S 152° 19'.18 E thence on the minor arc of a circle of 25M radius centred on 32° 47'.72 S 151° 49'.39 E to 33° 12'.20 S 151° 55'.84 E, 33° 32'.84 S 151° 58'.88 E, 33° 25'.96 S 154° 16'.82 E, 32° 33'.31 S 154° 48'.31 E, 31° 01'.46 S 155° 08'.49 E, 30° 43'.62 S 153° 24'.47 E, 32° 44'.03 S 152° 19'.18 E.

All waters, creeks, beaches and other areas within the declared marine danger area are not available for access.

Mariners are advised to keep clear of this area throughout the above times.

**Chart temporarily affected - Aus 219 - Aus 489 - Aus 809 - Aus 810 - Aus 811 - Aus 812 - Aus 4643 (INT 643) - AX 00809S**

**1066(T)/2014 AUSTRALIA - NEW SOUTH WALES - Sydney Harbour - Depth information**

Former Notice - 906(T)/2013 is cancelled

Sydney Ports Corporation (AA774086)

Available depths as at 3 November 2014:

<i>Berth</i>	<i>Metres</i>
Overseas Passenger Terminal	10.0
Glebe Island 1	11.8
Glebe Island 2	11.9
Glebe Island 7	10.7
* Glebe Island 8	8.3
* White Bay 2	10.4
* White Bay 3	10.7
White Bay 4	11.1
* White Bay Cruise Terminal	10.8
Gore Cove 1	13.0
Gore Cove 2	9.8
* Indicates new or revised entry.	

**Chart temporarily affected - Aus 200 - Aus 202 - AX 00202T**

**1067(T)/2014 AUSTRALIA - QUEENSLAND - Abbot Point - Depth information**

Maritime Safety Queensland Notice 623(T)/2014 (AA773478)

Available depths as at 29 October 2014:

	<i>Metres</i>
* Departure Channel	17.2
* Berth 1	19.0
* Berth 2	19.5
* Indicates new or revised entry.	

**Chart temporarily affected - Aus 255**

**1068(T)/2014 AUSTRALIA - QUEENSLAND - Cairns - Depth information**

Former Notice - 1018(T)/2014 is cancelled

Maritime Safety Queensland Notice 603(T)/2014 (AA771737)

Available depths as of 21 October 2014:

	Metres	Remarks
Entrance Channel	8.5	
* Inner Harbour Beacon C20 - Swing Basin	8.5	
Crystal Swing Basin at:		
* 300 metre diameter	8.0	
* 360 metre diameter	7.1	
380 metre diameter	6.4	
Swing Basin at:		
310 metre diameter	8.7	
320 metre diameter	7.8	
Marlin Marina	4.2	
<b>Berths:</b>		
No 1	8.4	
No 2	8.5	
No 3	8.4	
No 4	8.4	
No 5	8.2	
No 6	8.1	between 500 metres and 550 metres
No 6	7.7	between 550 metres and 600 metres
No 7	9.9	
No 8	10.0	
No 10	9.3	
No 12	10.5	
Smiths Creek 1	4.7	
* Indicates new or revised entry.		

**Chart temporarily affected - Aus 262 - Aus 263 - Aus 264 - Aus 830 - AX 00262T - AXA 0830T****1069(T)/2014 AUSTRALIA - QUEENSLAND - Freshwater Point to Hay Point - Scientific instruments**

Maritime Safety Queensland Notices 609(T)/2014, 610(T)/2014 (AA773125, AA773124)

Scientific instruments marked by special light buoys, *Fl.4s*, exist in positions 21° 24'.98 S 149° 20'.21 E and 21° 15'.84 S 149° 18'.11 E.

**Chart temporarily affected - Aus 249 - Aus 250 - AX 00249S****1070(T)/2014 AUSTRALIA - QUEENSLAND - Gladstone - Survey operations**

Date - Until 9 January 2015

Maritime Safety Queensland Notice 627(T)/2014 (AA773954)

QG *Norfolk* is conducting survey operations in all Gladstone main channels and bypass channels.

The vessel will maintain a listening watch on VHF Ch 13 and Ch 16.

Mariners are advised to navigate with caution in the area.

**Chart temporarily affected - Aus 244 - Aus 245 - Aus 246 - Aus 271 - Aus 272 - Aus 819****1071(T)/2014 AUSTRALIA - QUEENSLAND - Magnetic Island - Picnic Bay - Harbour works**

Date - Until 21 December 2014

Maritime Safety Queensland Notice 611(T)/2014 (AA773293)

Works associated with maintenance of the jetty (19° 10'.90 S 146° 50'.35 E) are in progress.

Mariners are advised to navigate with caution in the area.

**Chart temporarily affected - Aus 256**

**1072(T)/2014 AUSTRALIA - QUEENSLAND - Magnetic Island - Scientific instrument**

Maritime Safety Queensland Notice 634(T)/2014 (AA774860)

A scientific instrument marked by a special light buoy, *Fl.Y.4s*, exists in position 19° 08.10 S 146° 56'.20 E.

**Chart temporarily affected - Aus 256**

**1073(P)/2014 AUSTRALIA - QUEENSLAND - Middle Reef to Eel Reef - Lights to be altered; light buoy to be established**

*Date* - On or about 15 December 2014

Australian Maritime Safety Authority Preliminary ATH 34/2014, 35/2014, 36/2014 (AA774330, AA774328, AA774331)

The light K3240.4 (12° 31'.47 S 143° 23'.68 E) will be altered to *Fl(3)15s 8m 11M*.

The light K3241 (12° 24'.52 S 143° 22'.33 E) will be altered to *Fl.5s 9m 10M*.

An east cardinal pillar light buoy, *Q(3)10s*, will be established in position 12° 26'.30 S 143° 21'.69 E.

**Chart which will be affected - Aus 834 - Aus 835 - Aus 836**

**1074(T)/2014 AUSTRALIA - QUEENSLAND - Moreton Bay - Brisbane River - Depth information**

Former Notice - 1023(T)/2014 is cancelled  
Brisbane Port Corporation (AA773184)

Available depths and under keel clearances (UKC) at 29 October 2014:

<i>Berth</i>	<i>Metres</i>	<i>Remarks</i>
Fisherman Islands No12	14.2	
Fisherman Islands No11	14.0	
Fisherman Islands No10	14.1	
Fisherman Islands No9	14.2	
Fisherman Islands No8	14.0	
* Fisherman Islands No7	13.9	
* Fisherman Islands No6	14.2	
Fisherman Islands No5	14.2	
* Fisherman Islands No4	13.8	
Fisherman Islands No3	14.0	
Fisherman Islands No2	14.2	
Fisherman Islands No1	13.9	
Fisherman Islands Grain and Woodchip	13.0	
Caltex Fisherman Islands	14.6	
Fisherman Islands Coal	14.0	
Fisherman Islands General Purpose	11.5	
* Luggage Point Pump Out Facility	13.0	
BP Luggage Point	14.5	
Caltex Products	10.3	
* Cement Australia Co Wharf	9.6	
* BP Products	11.0	
* Viva Energy	11.1	
Graincorp Liquid Terminal	10.3	
* Incitec North	10.2	
Incitec South	10.6	
Pinkenba 1	10.4	
Pinkenba 2	10.4	
Riverside Marina	-	
Sugar Terminal	9.8	
Cairncross Fitting Out Wharf	7.1	
Cairncross Breasting Wharf	4.4	
Brisbane Naval Wharf	4.3	
* Maritime No1	8.7	
Hamilton No4	10.3	
* Hamilton No1	8.8	
Brisbane Cruise Ship Terminal	9.0	
	<i>Metres</i>	<i>UKC/Remarks</i>
<i>Moreton Bay:</i>		
North West Channel	15.0	2.3 (280m width)
North West Bypass Channel	9.2	1.6
Spitfire Channel	15.0	1.5 (600m width)
East Knoll Bypass Channel	6.0	1.4
East Channel	15.0	1.5 (300m width from western side)
Main Channel (M8 - M9)	10.0	1.8
Entrance Channel (E5 - EBCN)	14.7	1.5
<i>Brisbane River:</i>		
Outer Bar Cutting	14.0	1.46
Inner Bar Cutting	14.0	1.46
Fisherman Islands Swing Basin	14.0	1.3
Fisherman Islands Swing Basin (11.5)	11.5	0.6
River	9.1	0.6 / 0.9 (draft/tide)
Cement Australia Swing Basin	9.1	0.6 / 0.9 (draft/tide)
Pinkenba Swing Basin	9.1	0.6 / 0.9 (draft/tide)
Hamilton Swing Basin	9.1	0.6 / 0.9 (draft/tide)
* Indicates new or revised entry.		

**Chart temporarily affected - Aus 235 - Aus 236 - Aus 237 - Aus 238 - Aus 814 - Aus 815**

**1075(T)/2014 AUSTRALIA - QUEENSLAND - Point Arkwright to Noosa Head - Research operations completed***Former Notice* - 920(T)/2014 is cancelled

Maritime Safety Queensland Notice 544(T)/2014 (AA766756)

Cancel this notice on receipt.

**Chart formerly affected - Aus 815****1076(P)/2014 AUSTRALIA - QUEENSLAND - Swain Reefs - Hixson Cay - Light to be altered***Date* - On or about 26 November 2014

Australian Maritime Safety Authority Preliminary ATH 32/2014 (AA774253, AA774333)

The light K3014.5 (22° 19'.95 S 152° 43'.84 E) will be altered to *Fl.10s 18m 18M*.**Chart which will be affected - Aus 367 - Aus 490 - Aus 4621 (INT 621) - Aus 4635 (INT 635) - AX 04621U****1077(T)/2014 AUSTRALIA - QUEENSLAND - Townsville - Depth information***Former Notice* - 873(T)/2014 is cancelled

Maritime Safety Queensland Notice 608(T)/2014 (AA773038)

Available depths as at 23 October 2014:

	<i>Metres</i>	<i>Remarks</i>
Sea Channel	11.5	
Platypus Channel	11.4	
<i>Outer Harbour:</i>		
Arrival Channel	6.1	
Departure Channel	9.8	
<i>Inner Harbour:</i>		
Harbour	11.3	
<i>Berths:</i>		
No 1	11.6	
No 2	12.2	
No 3	11.4	
No 4	10.1	
No 7	11.6	
No 8	13.0	
* No 9	11.6	
Between No 9 and No 10	7.3	Seaward of 0 mark at No 10
No 10	11.2	
* No 11	10.0	
Ross River Channel	2.2	Entrance to beacon No 6
Ross River	-	Upstream of beacon No 6
Ross Creek	-	
* Indicates new or revised entry.		

**Chart temporarily affected - Aus 256 - Aus 257****1078(T)/2014 PAPUA NEW GUINEA - Kitumala Point - Light relit***Former Notice* - 384(T)/2014 is cancelled

National Maritime Safety Authority PNG Notice 33/2014 (AA773084)

Cancel this notice on receipt.

**Chart formerly affected - Aus 386 - Aus 387****1079(T)/2014 AUSTRALIA - NORTHERN TERRITORY - Fenton Patches - Scientific instruments recovered***Former Notice* - 1146(T)/2012 is cancelled

Darwin Port Corporation (AA772106)

Cancel this notice on receipt.

**Chart formerly affected - Aus 309 - Aus 722 - AX 00309U - AX 72309 - AX 72722**



**1080(T)/2014 AUSTRALIA - NORTHERN TERRITORY - Quail Island - Military exercise***Date* - Until 19 November 2014

Department of Defence (AA772813)

A 5500m radius exclusion zone exists around position 12° 31'.14 S 130° 26'.13 E. Explosive demolitions will be conducted on 18 November 2014.

**Chart temporarily affected - Aus 29 - Aus 309 - Aus 316 - Aus 722 - AX 00309T - AX 00309U - AX 00722T**

**1081(T)/2014 AUSTRALIA - NORTHERN TERRITORY - WESTERN AUSTRALIA - Darwin to Browse Island - Pipeline***Former Notice* - 699(T)/2014 is cancelled*Date* - Until 31 October 2015

Darwin Port Corporation Notice 87(T)/2014 (AA755032), Inpex Browse Limited (AA402900 - AA402902), Eni Australia Ltd (AA772122)

PLV *SEMAC1* and support vessels *MT Archon Tide*, *MT Marty Quest Tide* and *MT William R Croyle II* are conducting pipe laying operations until 20 November between the following positions:

12° 32'.15 S 130° 52'.52 E  
 12° 31'.99 S 130° 50'.66 E  
 12° 31'.83 S 130° 50'.19 E  
 12° 31'.51 S 130° 49'.86 E  
 12° 28'.02 S 130° 48'.14 E  
 12° 23'.86 S 130° 44'.83 E  
 12° 20'.82 S 130° 40'.97 E  
 12° 18'.44 S 130° 35'.66 E  
 12° 17'.69 S 130° 32'.97 E  
 12° 17'.26 S 130° 26'.54 E  
 12° 18'.46 S 130° 12'.03 E  
 12° 29'.98 S 129° 29'.92 E.

SEAMAC1 will deploy 12 anchors, marked by special light buoys Q, up to 1800m in length.

PLV *Castorone* will continue operations from mid December between the following positions:

12° 29'.98 S 129° 29'.92 E  
 12° 31'.48 S 128° 06'.11 E  
 12° 47'.94 S 126° 23'.94 E  
 12° 45'.62 S 126° 11'.99 E  
 12° 48'.74 S 126° 00'.04 E  
 13° 35'.07 S 124° 22'.68 E  
 13° 45'.24 S 123° 54'.68 E  
 13° 58'.98 S 123° 41'.67 E  
 13° 59'.54 S 123° 40'.49 E  
 13° 59'.33 S 123° 38'.49 E  
 13° 53'.21 S 123° 21'.21 E  
 13° 53'.55 S 123° 19'.25 E  
 13° 55'.96 S 123° 17'.89 E.

Mariners are advised to navigate with caution in the area.

**Chart temporarily affected - Aus 24 - Aus 26 - Aus 27 - Aus 29 - Aus 309 - Aus 314 - Aus 315 - Aus 316 - Aus 318 - Aus 319 - Aus 320 - Aus 722 - Aus 728 - Aus 4721 (INT 721) - Aus 4722 (INT 722) - AX 00026T - AX 00309U - AX 00309T - AX 00314U - AX 00315U - AX 00319U - AX 00722T - AX 04721U - AX 04722U**

**1082(T)/2014 AUSTRALIA - TIMOR SEA - Barracouta Shoal - Drill rig northeastwards moved***Former Notice* - 876(T)/2014 is cancelledMODU *Stena Clyde* (AA774623)

Cancel this notice on receipt.

**Chart formerly affected - Aus 314 - Aus 319 - Aus 4721 (INT 721) - Aus 4722 (INT 722) - AX 00314U - AX 00319U - AX 04721U - AX 04722U**

**1083(T)/2014 AUSTRALIA - WESTERN AUSTRALIA - Barrow Island - Scientific instrument northwestwards**  
MetOcean Engineers (AA773736)

A scientific instrument marked by a special light buoy, Q(5)Y.20s, exists in position 20° 29'.00 S 114° 51'.50 E.

**Chart temporarily affected - Aus 328**

**1084(P)/2014 AUSTRALIA - WESTERN AUSTRALIA - Breaksea Island - Light to be altered**

*Date* - On or about 7 December 2014

Australian Maritime Safety Authority Preliminary ATH 33/2014 (AA774326)

The light K1800 (35° 03'.87 S 118° 03'.45 E) will be altered to *Fl(2)6s 119m 13M & Oc.R.1.5s 119m 15M* with sectors:  
White 248° - 020°

Red/White 020° - 035°

Obscured beyond Bald Head 035° - 040.5°

Red/White 040.5° - 044°

Obscured beyond Bald Head 044° - 048°

**Chart which will be affected - Aus 110 - Aus 118 - Aus 336 - Aus 337 - Aus 759 - AX 00110S - AX 00118S**

**1085(T)/2014 AUSTRALIA - WESTERN AUSTRALIA - Browse Island - Well and pipeline operations northwestwards**

*Date* - Until 22 November 2014

Technip (AA769612)

MV *Deep Orient* will be conducting well and pipeline operations in an area bounded by the following positions:

13° 49'.1 S 123° 19'.8 E

13° 47'.8 S 123° 19'.8 E

13° 47'.8 S 123° 19'.0 E

13° 49'.1 S 123° 19'.0 E.

Mariners are advised to navigate with caution in the area.

**Chart temporarily affected - Aus 319 - Aus 320 - AX 00319U**

**1086(T)/2014 AUSTRALIA - WESTERN AUSTRALIA - Browse Island - Pipeline operations northwestwards completed**

*Former Notice* - 979(T)/2014 is cancelled

McDermott Australia Pty Ltd (AA769611)

Cancel this notice on receipt.

**Chart formerly affected - Aus 319 - Aus 320 - Aus 322 - AX 00319U - AX 00322U**

**1087(T)/2014 AUSTRALIA - WESTERN AUSTRALIA - Browse Island - Scientific instruments northwestwards**

*Date* - Until 31 October 2015

MetOcean Engineers (AA773736)

Subsurface scientific instruments exist in the following positions:

13° 39'.63 S 123° 20'.82 E

13° 43'.99 S 123° 20'.40 E

13° 47'.57 S 123° 17'.86 E

13° 48'.66 S 123° 20'.66 E.

**Chart temporarily affected - Aus 319 - Aus 320 - AX 00319U**

**1088(T)/2014 AUSTRALIA - WESTERN AUSTRALIA - Browse Island - Drill rig southeastwards**

MODU *Stena Clyde* (AA774623)

MODU *Stena Clyde* is conducting drilling operations in position 14° 35'.65 S 124° 03'.73 E.

**Chart temporarily affected - Aus 320 - Aus 4721 (INT 721) - Aus 4722 (INT 722) - AX 04721U - AX 04722U**

**1089(T)/2014 AUSTRALIA - WESTERN AUSTRALIA - Dirk Hartog Island - Seismic survey westwards***Date* - Until 28 December 2014

Geoscience Australia (AA772085)

Vessel MV *Duke*, with a 3704m towed array, is conducting a survey in the area bounded by the following positions:

27° 12'.0 S 111° 18'.0 E

26° 30'.0 S 112° 26'.0 E

24° 00'.0 S 111° 30'.0 E

24° 15'.0 S 110° 20'.0 E

25° 30'.0 S 110° 45'.0 E

26° 21'.0 S 110° 45'.0 E.

**Chart temporarily affected - Aus 331 - Aus 4725 (INT 725)****1090(T)/2014 AUSTRALIA - WESTERN AUSTRALIA - Little Turtle Island to Weerde Island - Scientific instruments***Date* - Until 14 January 2015

Pilbara Ports Authority Notice 71(T)/2014 (AA772082, AA772157)

Scientific instruments marked by special spherical light buoys, *Fl.Y.1-5s*, exist in the following positions:

20° 01'.18 S 118° 47'.98 E

20° 09'.00 S 118° 33'.16 E

20° 10'.31 S 118° 33'.98 E

20° 17'.40 S 118° 28'.88 E.

**Chart temporarily affected - Aus 52 - Aus 53 - Aus 739****1091(T)/2014 AUSTRALIA - WESTERN AUSTRALIA - Muiron Islands - Mooring buoys northwestwards***Date* - Until 5 December 2014

Viking Seatech (AA774144), Australian Maritime Safety Authority Auscoast Warning 247/2014 (AA774147)

8 yellow mooring buoys, *Fl.3s*, exist within 1NM radius of position 21° 26'.04 S 114° 01'.99 E.**Chart temporarily affected - Aus 328 - Aus 329 - Aus 744****1092(P)/2014 AUSTRALIA - WESTERN AUSTRALIA - North West Cape - Light to be altered***Former Notice* - 299(T)/2014 is cancelled*Date* - On or about 17 November 2014

Australian Maritime Safety Authority Preliminary ATH 25/2014 (AA773113)

The light K1710 (21° 48'.37 S 114° 09'.61 E) will be altered to *Fl.10s 129m 24M*.**Chart which will be affected - Aus 328 - Aus 329 - Aus 744 - Aus 745 - Aus 4723 (INT 723) - Aus 4725 (INT 725) - AX 04723U****1093(T)/2014 AUSTRALIA - WESTERN AUSTRALIA - Port Hedland - Dredging operations completed***Former Notice* - 837(T)/2014 is cancelled

Pilbara Ports Authority Notice 76(T)/2014 (AA774188)

Cancel this notice on receipt.

**Chart formerly affected - Aus 52 - Aus 53 - Aus 54****1094(T)/2014 AUSTRALIA - WESTERN AUSTRALIA - Port Hedland - Stingray Creek - Dredging operations**

Pilbara Ports Authority Notice 74(T)/2014 (AA774198)

The dredge *FT3*, barge *River Bee* and support vessels *Daintree* and *Total Force* are conducting dredging operations in Stingray Creek (20° 19'.8 S 118° 35'.3 E).

Information about the operations can be obtained by contacting the Shipping Control Tower on on VHF Ch 12.

Mariners are advised to navigate with caution in the area.

**Chart temporarily affected - Aus 52 - Aus 54**

**1095(T)/2014 AUSTRALIA - WESTERN AUSTRALIA - Port Hedland - Harbour works***Date* - Until 4 January 2015

Pilbara Ports Authority Notice 75(T)/2014 (AA774205)

Works associated with the upgrade of the jetty (20° 18'.83 S 118° 34'.36 E) are in progress.

Barge *Weerde Island* and support vessels *AMS14* and *Docker* are on site and will monitor VHF Ch 12.

An exclusion zone exists in the area.

Mariners are advised to navigate with caution in the area.

**Chart temporarily affected - Aus 52 - Aus 54**

**1096(T)/2014 AUSTRALIA - WESTERN AUSTRALIA - Port Hedland - Light beacon unlit***Former Notice* - 88(T)/2014 is cancelled

Pilbara Ports Authority Notice 77(T)/2014 (AA774842)

The east cardinal light beacon, *Q(3)10s 10m 6M E3* (20° 03'.18 S 118° 32'.60 E), is unlit; a special conical light buoy, *F*, exist in situ.

**Chart temporarily affected - Aus 53 - Aus 739 - Aus 740**

**1097(T)/2014 AUSTRALIA - WESTERN AUSTRALIA - Rankin Bank - Scientific instrument northeastwards***Former Notice* - 713(T)/2012 is cancelled

MetOcean Engineers (AA773736)

A subsurface scientific instrument exists in position 19° 34'.63 S 116° 08'.94 E.

**Chart temporarily affected - Aus 327**

**1098(T)/2014 AUSTRALIA - SOUTH AUSTRALIA - Margaret Brock Reef - Light unlit***Date* - Until 30 November 2014

Department of Planning, Transport and Infrastructure SA Notice 42/2014 (AA773287)

The light, *Fl.5s 17m 10M* (36° 57'.1 S 139° 35'.7 E), is unlit.

**Chart temporarily affected - Aus 127 - Aus 347**

**1099(T)/2014 AUSTRALIA - SOUTH AUSTRALIA - Whyalla - Light beacon destroyed**

Department of Planning, Transport and Infrastructure SA Notice 42/2014 (AA773250)

No4 port lateral light beacon, *F.R* (33° 01'.66 S 137° 36'.71 E), has been destroyed; a port lateral light buoy, *F.R*, exists in situ.

**Chart temporarily affected - Aus 135**

**1100(T)/2014 AUSTRALIA - VICTORIA - Geelong - Point Henry - Light unlit; light discontinued**

Victorian Notice 190(T)/2014 (AA774706)

The light, *F.Bu* (38° 08'.03 S 144° 25'.64 E), is unlit.

The light, *F.Bu* (38° 07'.70 S 144° 26'.20 E), has been temporarily discontinued.

**Chart temporarily affected - Aus 157**

**1101(T)/2014 AUSTRALIA - VICTORIA - Western Port - Scientific instruments***Date* - Until 23 October 2015

Victorian Notice 184(T)/2014 (AA774010, AA774012)

Scientific instruments exist as follows:

	<i>Position</i>	<i>Remarks</i>
WPO4	38° 29'.56 S 144° 50'.76 E	subsurface
WPO3	38° 31'.61 S 144° 58'.69 E	subsurface
WPO1	38° 41'.26 S 145° 32'.20 E	subsurface
WE 2	38° 30'.05 S 145° 06'.54 E	subsurface
WE 3	38° 25'.73 S 145° 06'.66 E	subsurface
WE 4	38° 26'.95 S 145° 10'.75 E	subsurface
R1	38° 26'.21 S 145° 16'.25 E	subsurface
C2	38° 21'.42 S 145° 30'.62 E	subsurface
C3	38° 18'.23 S 145° 28'.85 E	special light buoy, Q.Y
LNA 1	38° 23'.41 S 145° 15'.04 E	subsurface
LNA 2	38° 22'.22 S 145° 14'.90 E	special light buoy, Q.Y
LNA 6	38° 15'.88 S 145° 15'.48 E	special light buoy, Q.Y
UNA 1	38° 16'.15 S 145° 18'.90 E	special light buoy, Q.Y
UNA 3	38° 16'.28 S 145° 25'.31 E	subsurface
UNA 4	38° 15'.91 S 145° 28'.97 E	special light buoy, Q.Y
UNA 5	38° 17'.56 S 145° 28'.17 E	special light buoy, Q.Y
WER 1	38° 30'.41 S 145° 05'.33 E	subsurface

**Chart temporarily affected - Aus 150 - Aus 151 - Aus 788 - Aus 801****1102(T)/2014 AUSTRALIA - TASMANIA - D'Entrecasteaux Channel - Huon Point - Marine farm***Date* - Until 28 February 2015

Marine and Safety Tasmania Notice 111/2014 (AA774275)

Mariners are advised that works to amend the boundary of the marine farm are in progress.

The amended boundary will be marked by four special light buoys, Oc.10s, in an area bounded by the following positions:

43° 17'.10 S 147° 07'.07 E

43° 17'.61 S 147° 07'.07 E

43° 17'.61 S 147° 06'.48 E

43° 17'.11 S 147° 06'.48 E.

**Chart temporarily affected - Aus 173 - Aus 795**

**1103(T)/2014 AUSTRALIA - TASMANIA - Mercury Passage - Obstructions**

*Former Notice* - 1046(T)/2014 is cancelled

*Date* - Until 28 February 2016

Marine and Safety Tasmania Notice M108/2014 (AA774240)

Obstructions, 2m above the seabed, exist in an area bounded by the following positions:

42° 38'.92 S 148° 00'.76 E

42° 38'.92 S 148° 00'.93 E

42° 38'.78 S 148° 00'.93 E

42° 38'.78 S 148° 00'.76 E.

Anchoring is prohibited in the area.

Mariners are advised to navigate with caution in the area.

**Chart temporarily affected - Aus 170 - Aus 766 - Aus 797**

## HYDROGRAPHIC REPORTS

<i>Locality</i>	<i>Report</i>	<i>Ship/Authority</i>	<i>Observer</i>
QLD- Endeavour Strait	Tidal arrows		M Bresman
Decapolis Reef	Light beacon		M Bresman
Townsville	Spoil ground		P Howe

### NAVIGATION WARNINGS

The following radio messages have been received during the period to 6 November 2014. Signal copies of these messages may be destroyed. It is recommended that the reprint of Navigational Warnings should be kept in a file or a book divided into areas. Cancellation should be made on receipt of signals and reprints.

Rigs on location other than those listed in the latest Section III summary are the subject of Radio Navigational Warnings. Rigs in transit will not be the subject of Warnings.

### AUSCOAST WARNING

- 232 Chart Aus 319 – Penguin Shoal to Browse Island 20m obstruction on seabed in position 13° 06'.2 S 123° 17'.5 E. 1M clearance requested.
- 233 Cancelled.
- 234 Drill rig *Deepwater Frontier* in position 19° 47'.56 S 114° 38'.96 E. 2.5M clearance requested.
- 235 Special purpose vessel *Bourbon Grebe* conducting pipe towing operations in position 19° 31'.0 S 111° 39'.0 E. 6M clearance requested.
- 236 Cancelled.
- 237 Cancelled.
- 238 Cancelled.
- 239 Swain Reefs racon ALRS Vol(2) 88000 in position 22° 19'.95 S 152° 43'.83 E temporarily discontinued.
- 240 Cancelled.
- 241 Special purpose vessel *Polarcus Asima* conducting seismic survey in an area bounded by 39° 12'.0 S to 39° 39'.0 S and 141° 03'.0 E to 142° 12'.0 E. 5M clearance requested.
- 242 Drill rig *Deepwater Millennium* in position 16° 46'.36 S 118° 14'.21 E. 2.5M clearance requested.
- 243 Drill rig *Atwood Falcon* in position 21° 20'.95 S 114° 04'.38 E. 2.5M clearance requested.
- 244 Cancelled.
- 245 Nardana Patches tide gauge in position 10° 30'.28 S 142° 14'.63 E unreliable.
- 246 Swain Reefs light K3014.5 in position 22° 19'.95 S 152° 43'.83 E reduced range 6M.
- 247 8 x 6 metre yellow buoys, *Fl.3s*, established within 1M of position 21° 26'.04 S 114° 01'.98 E. 2M clearance requested.

### NAVAREA X WARNINGS

- 065 Cancelled.
- 066 Cancelled.
- 067 Cancelled.
- 068 Special purpose vessel *Go Phoenix* conducting underwater towing operations in an area bounded by 32° 42'.0 S 95° 23'.0 E, 35° 14'.0 S 93° 02'.0 E, 34° 57'.0 S 92° 43'.0 E and 32° 58'.0 S 92° 45'.0 E. 10M clearance requested.

### Navigational warnings in force as at 060001UTC NOV 14.

#### Auscoast

2014 197 220 221 222 224 225 226 227 228 231 232 234 235 239 241 242 243 245 246 247

#### Navarea X

2014 064 068

### Summary of mobile drilling rigs as at 060001UTC NOV 14.

Name	Position
Nan Hai 6	09° 47'.74 S 130° 13'.68 E
Transocean Legend	11° 00'.40 S 126° 41'.90 E
Jack Bates	10° 38'.61 S 126° 11'.02 E
Noble Clyde Boudreaux	13° 49'.00 S 123° 19'.35 E
Deepwater Millennium	16° 46'.36 S 118° 14'.21 E
Atwood Osprey	19° 56'.70 S 115° 19'.50 E
Atwood Eagle	19° 58'.22 S 115° 12'.76 E
Ocean America	20° 24'.49 S 114° 50'.95 E
Deepwater Frontier	19° 47'.56 S 114° 38'.96 E
Atwood Falcon	21° 20'.95 S 114° 04'.40 E



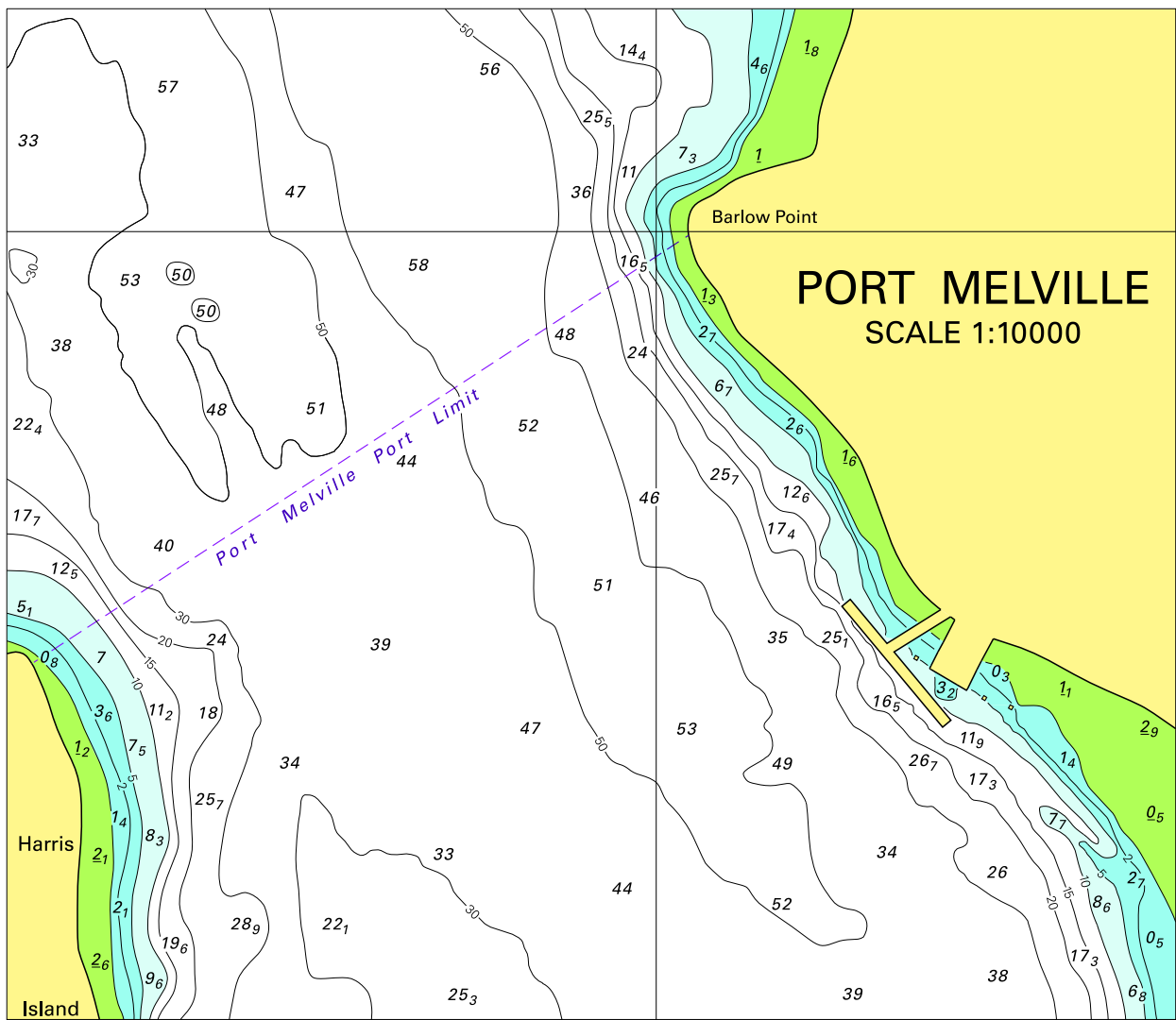
**NAVAREA XIV WARNINGS**

077	Cancelled.
078	Cancelled.
079	Cancelled.
080	Cancelled.
081	Cancelled.
082	Cancelled.
083	Cancelled.

**Navarea XIV warnings in force as at 060001UTC NOV 14.**

**2014** Nil.

To accompany Australian Notice to Mariners 1054/2014

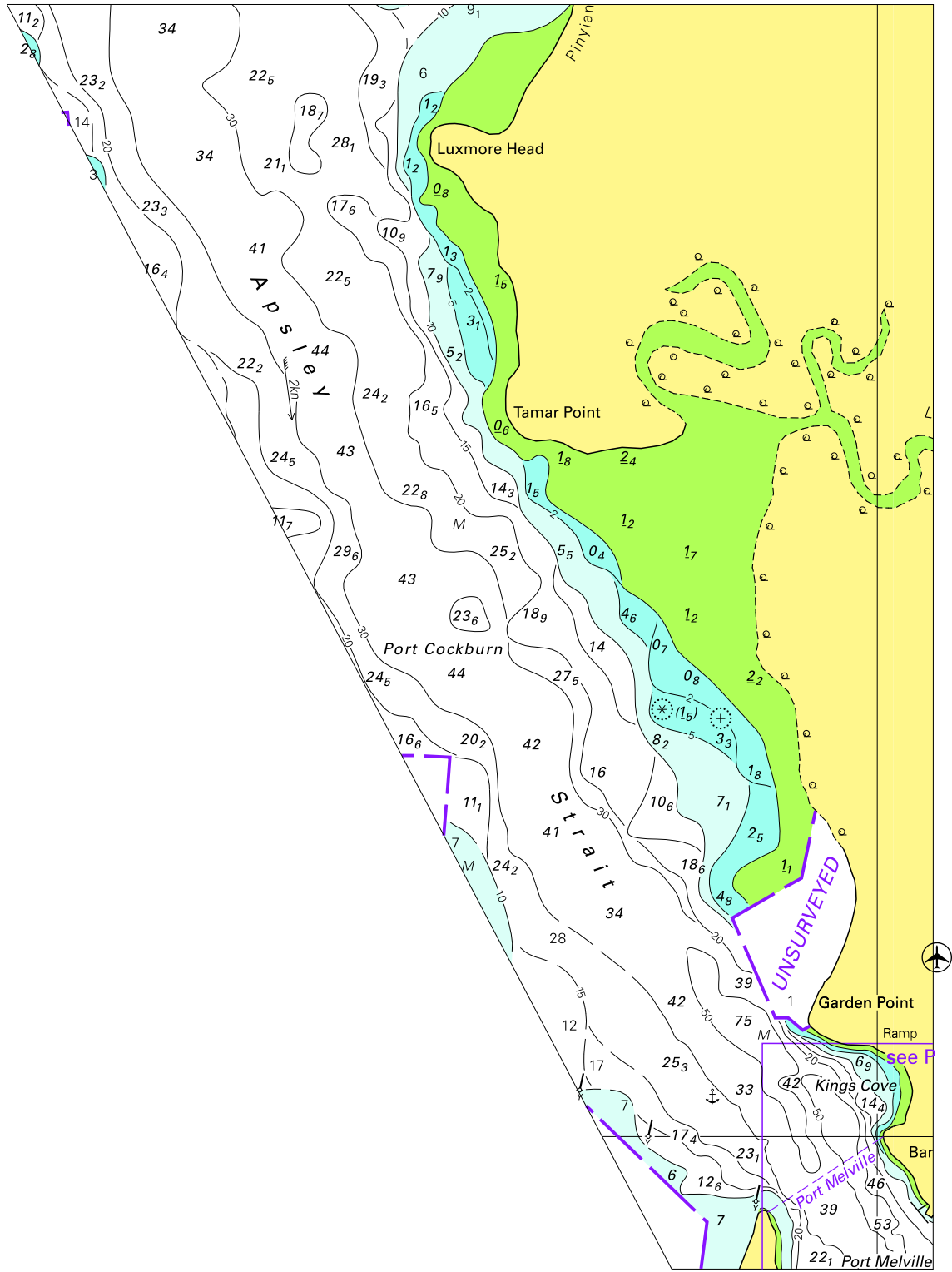


Block C for chart Aus 22

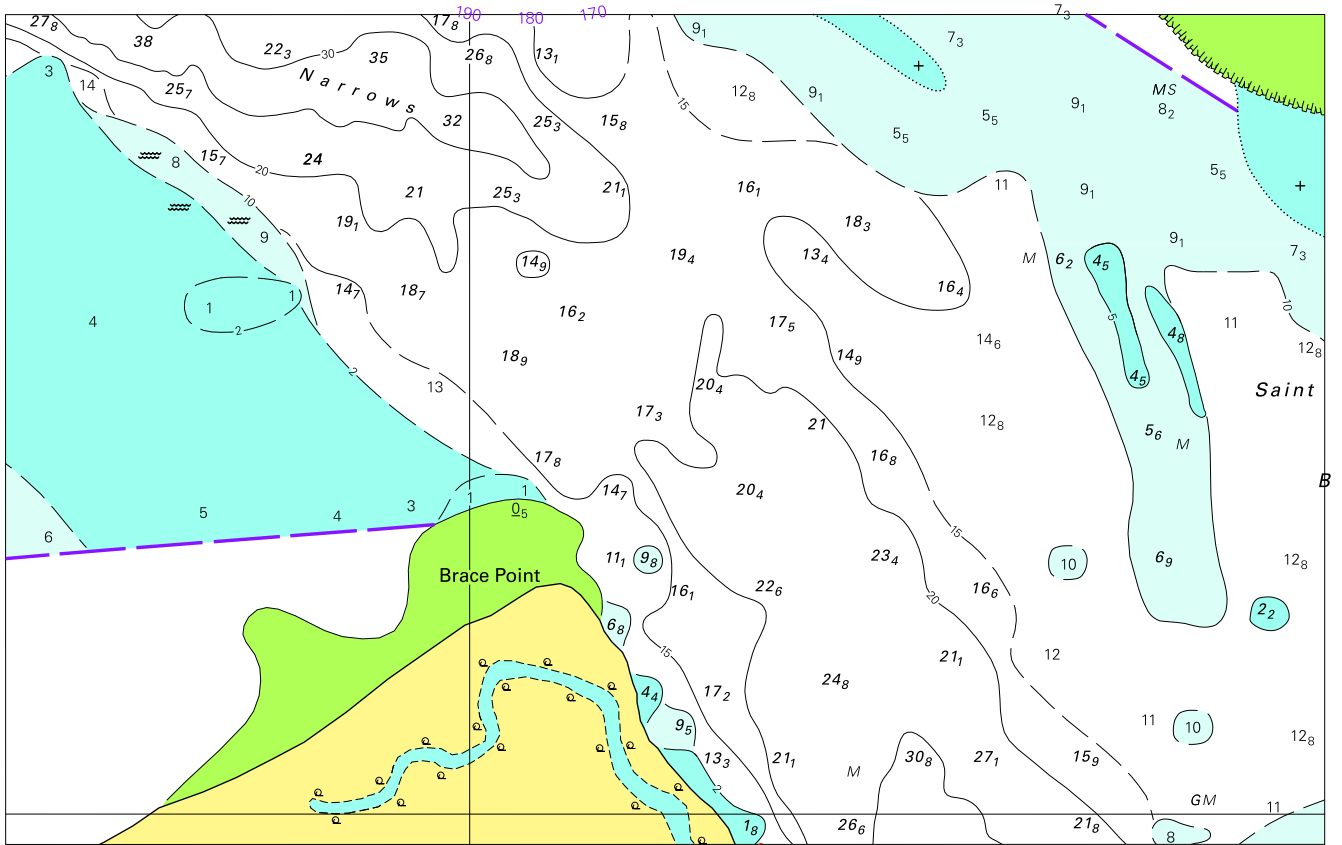
© Commonwealth of Australia 2014

(163.7 x 141.5mm)

To accompany Australian Notice to Mariners 1054/2014



*To accompany Australian Notice to Mariners 1054/2014*

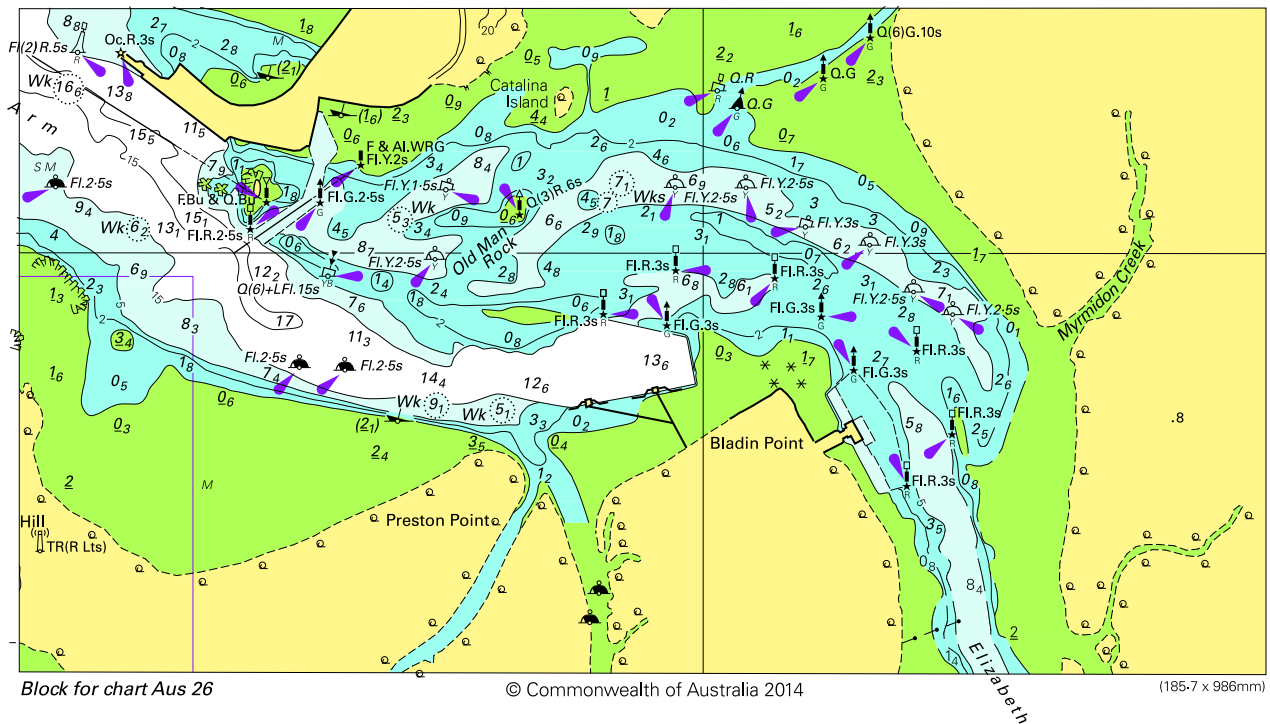


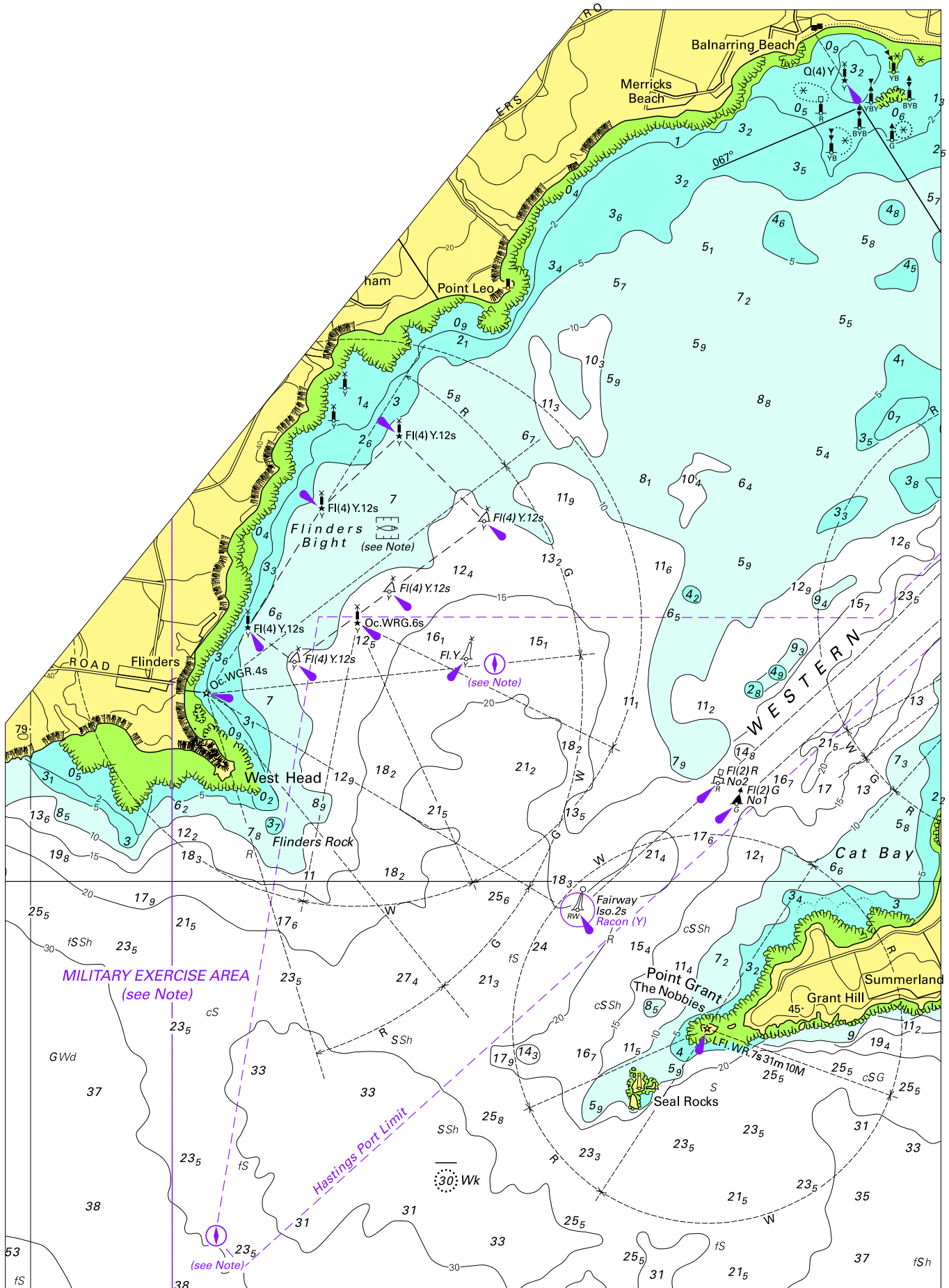
Block A for chart Aus 22

© Commonwealth of Australia 2014

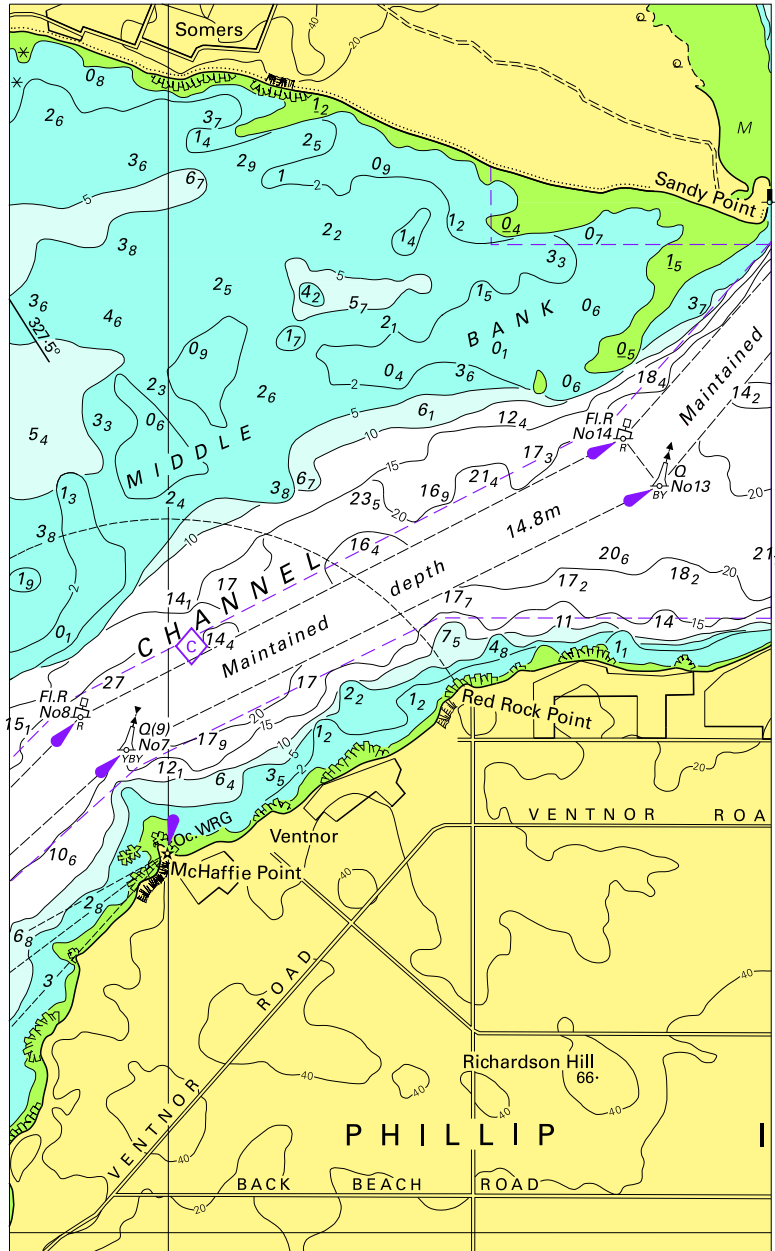
(196.5 x 123.6mm)

*To accompany Australian Notice to Mariners 1055/2014*





*To accompany Australian Notice to Mariners 1061/2014*

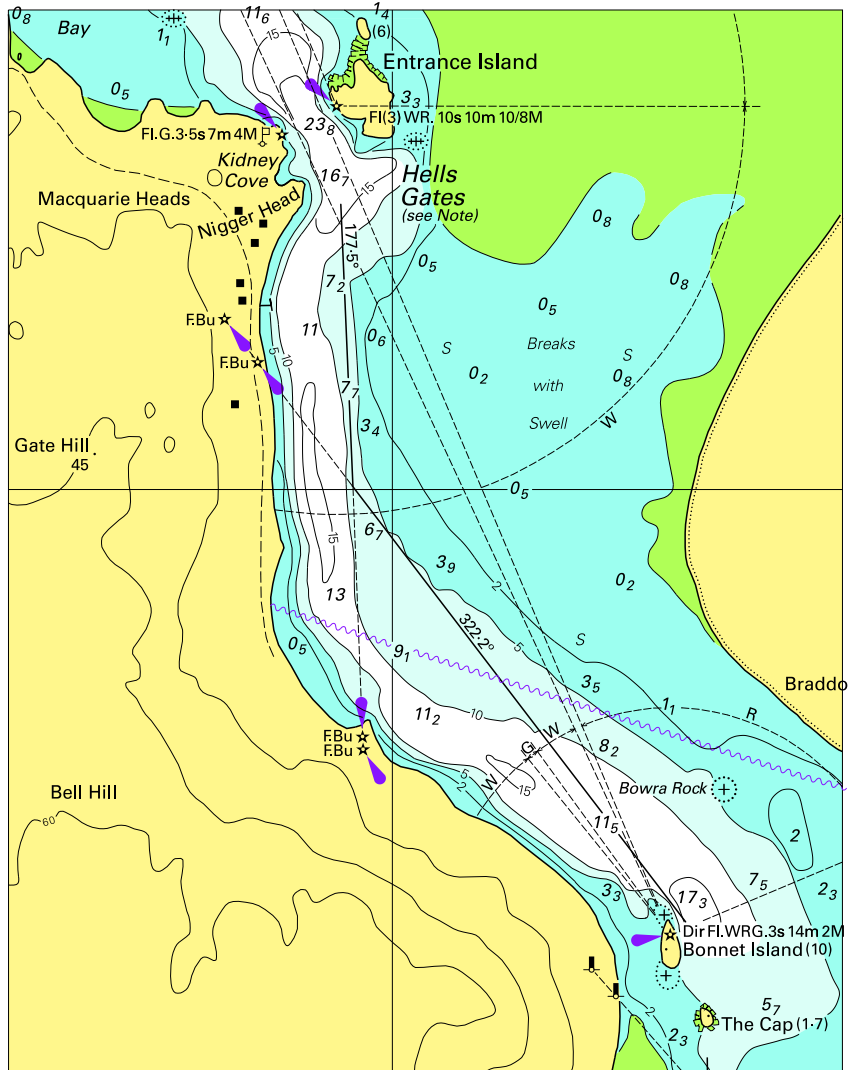


Block B for chart Aus 150

(100.7 x 168.5mm)

© Commonwealth of Australia 2014

*To accompany Australian Notice to Mariners 1062/2014*



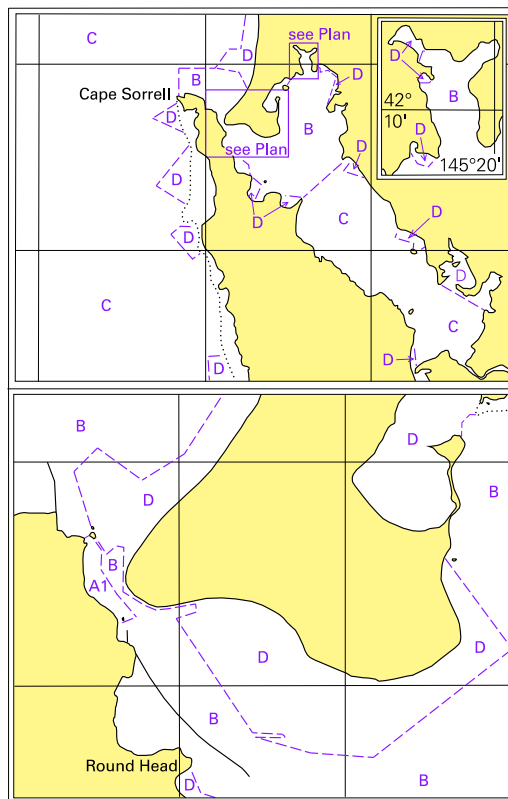
© Commonwealth of Australia 2014

Block B for chart Aus 177

(110.3 x 140.4mm)

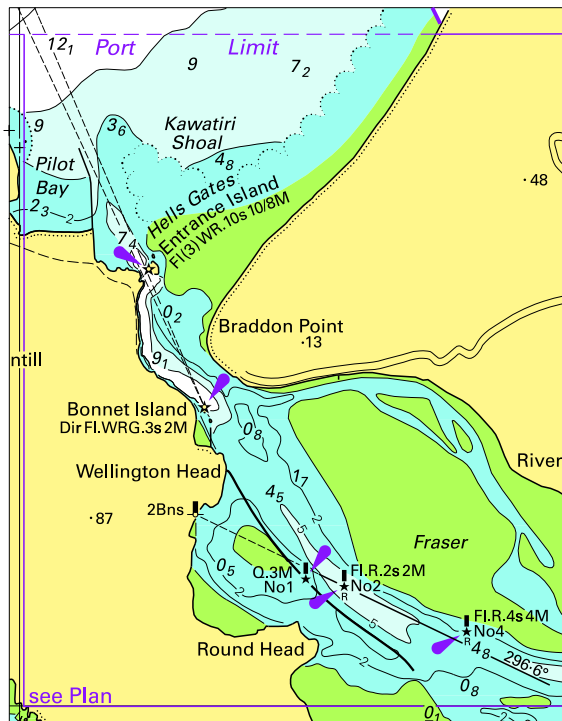


To accompany Australian Notice to Mariners 1062/2014



© Commonwealth of Australia 2014  
Block C for chart Aus 177 (67.6 x 105.2mm)

*To accompany Australian Notice to Mariners 1062/2014*



© Commonwealth of Australia 2014  
Block A for chart Aus 177 (73.9 x 94.7mm)