



24 October 2014

Edition 21

Australian Notices to Mariners are the authority for correcting Australian Charts and Publications

---

# AUSTRALIAN NOTICES TO MARINERS

Notices 992 - 1048

Cumulative List – October 2014

List of Temporary and Preliminary Notices in force 

Published fortnightly by the Australian Hydrographic Service

Commodore B.K. BRACE RAN  
*Hydrographer of Australia*

---

## SECTIONS.

- I. Australian Notices to Mariners, including blocks and notes.
- II. Hydrographic Reports.
- III. Navigational Warnings.

## SUPPLEMENTS.

- I. Tracings
- II. Cumulative List of Australian Notices to Mariners.
- III. Cumulative List of Temporary and Preliminary Australian Notices to Mariners.
- IV. Temporary and Preliminary Notices in force.
- V. Amendments to Admiralty List of Lights and Fog Signals (Vol K), Radio Signals (NP 281(2), 282, 283(2), 285, 286(4)) and Sailing Directions (NP 9, 13, 14, 15, 33, 34, 35, 36, 39, 44, 51, 60, 61, 62, 100, 136).

---

© Commonwealth of Australia 2014

This work is copyright. Apart from any use permitted under the Copyright Act 1968, no part may be reproduced by any process, adapted, communicated or commercially exploited without prior written permission from The Commonwealth represented by the Australian Hydrographic Service.

## IMPORTANT NOTICE

This edition of Notices to Mariners includes all significant information affecting AHS products which the AHS has become aware of since the last edition. All reasonable efforts have been made to ensure the accuracy and completeness of the information, including third party information, on which these updates are based. The AHS regards third parties from which it receives information as reliable, however the AHS cannot verify all such information and errors may therefore exist. The AHS does not accept liability for errors in third party information.

---

## GENERAL INSTRUCTIONS

The substance of these notices should be inserted on the charts affected.

Bearings are referred to the true compass and are reckoned clockwise from North; those relating to lights are given as seen by an observer from seaward. Positions quoted in permanent notices relate to the horizontal datum for the chart(s). When preliminary or temporary notices affect multiple charts, positions will be provided in relation to only one horizontal datum and that datum will be specified. When the multiple charts do not have a common horizontal datum, mariners will be required to adjust the position(s) for those charts not on the specified datum. The range quoted for a light is its nominal range. Depths are with reference to the chart datum of each chart. Heights are above mean high water springs or mean higher high water, as appropriate.

The capital letter (P) or (T) after the number of any notice denotes a preliminary or temporary notice respectively, which are contained separately at the end of the permanent notices. A star (\*) adjacent to the number of a notice indicates that the notice is based on original information.

---

## REPORTING OF DANGERS

Mariners are particularly requested to notify the AUSTRALIAN HYDROGRAPHIC SERVICE, Locked Bag 8801 Wollongong, NSW 2500 (Fax 02-4223 6599, e-mail [Hydro.NTM@defence.gov.au](mailto:Hydro.NTM@defence.gov.au) or, alternatively by filling in and submitting the [Hydrographic Notes](#) forms located on the web site – [www.hydro.gov.au](http://www.hydro.gov.au)), immediately on the discovery of new dangers or suspected dangers to navigation. For changes or defects in aids to navigation notify AusSAR (Fax 02-6230 6868 or email [rccaus@amsa.gov.au](mailto:rccaus@amsa.gov.au)).

---

## AUTHORISED USE

Copies of Australian notices are available free of charge from the Australian Hydrographic Service (AHS) website ([www.hydro.gov.au](http://www.hydro.gov.au)) and through the eNotices (email) service ([www.hydro.gov.au/enotices/enotices.htm](http://www.hydro.gov.au/enotices/enotices.htm)).

Individual Notices may be copied for the purpose of inserting Notice substance on official charts and publications. Paper copies may be printed by chart agents and distributed to customers on a cost recovery basis. Participating chart agents are listed on the AHS website as providing a 'Paper Notices to Mariners' service ([www.hydro.gov.au/prodserv/distributors/distributors.htm](http://www.hydro.gov.au/prodserv/distributors/distributors.htm)). Copies of the notices may not be sold for profit without prior written agreement.

## NUMERICAL INDEX OF NOTICES TO MARINERS

### Edition No 21

Notices	Aus Chart, INT Chart, ENC Cell, AHP, BA Pubs
992	Aus 52, 53, 151, 378
993	Amendment to Seafarers Handbook for Australian Waters AHP20
994	Aus 197, 200, 808, 809, AX 00200T, 00808S, 00809S
995	Aus 194, 195
996	Aus 238
997	Aus 230
998	Aus 241
999	Aus 270, 367, 490, 822, 834, 4620, 4621, 4635, INT 620, 621, 635, AX 00367S, 00822S, 04620U, 04621U
1000	Aus 519, 520, 644
1001	Aus 4723, INT 723, AX 04723U
1002	Aus 58, 59
1003	Aus 741
1004	Aus 318, 319, 727, 728, AX 00319U
1005	Aus 754, 755, AX 00754S, 00755S, AXA 0754S
1006	Aus 121, 342
1007	Aus 143, 155
1008	Aus 150, 801
1009	Aus 167
1010	Cumulative List of Australian Notices to Mariners - October 2014
1011(T)	Aus 207, 208
1012(T)	Aus 200, 201, AX 00200T, 00201T
1013(T)	Aus 4601, INT 601
1014(T)	Aus 825, 826
1015(T)	Aus 238
1016(T)	Aus 238
1017(T)	Aus 237, 238
1018(T)	Aus 262, 263, 264, 830, AX 00262T, AXA 0830T
1019(T)	Aus 262, 830, AX 00262T, AXA 0830T
1020(T)	Aus 376, 377, 837, 839, 841
1021(T)	Aus 250
1022(T)	Aus 249, AX 00249S
1023(T)	Aus 235, 236, 237, 238, 814, 815
1024(T)	Aus 235, 236, 815
1025(T)	Aus 235, 236
1026(T)	Aus 260, 261, 367, 822, AX 00260T, 00260S, 00367S, 00822S
1027(T)	Aus 256, 257, 827
1028(T)	Aus 257
1029(T)	Aus 379, 647
1030(T)	Aus 293, 299
1031(T)	Aus 319, 320, AX 00319U
1032(T)	Aus 59
1033(T)	Aus 4722, INT 722, AX 04722U
1034(T)	Aus 328
1035(T)	Aus 328, 4723, INT 723, AX 04723U
1036(T)	Aus 4722, INT 722, AX 04722U
1037(T)	Aus 312, AX 00312U
1038(T)	Aus 4708, 4714, 4723, INT 708, 714, 723, AX 04708U, 04714U, 04723U
1039(T)	Aus 127
1040(T)	Aus 4727, INT 727
1041(T)	Aus 141, 349, 487, 787, 789
1042(T)	Aus 153, 157
1043(T)	Aus 144, 158
1044(T)	Aus 143, 158
1045(T)	Aus 150, 487, 801
1046(T)	Aus 170, 766, 797
1047(T)	Aus 487
1048(T)	TEMPORARY AND PRELIMINARY NOTICES

# NUMERICAL INDEX OF CHARTS AFFECTED

## Edition No 21

Aus Chart	Notices
Aus 52	992
Aus 53	992
Aus 58	1002
Aus 59	1002, 1032(T)
Aus 121	1006
Aus 127	1039(T)
Aus 141	1041(T)
Aus 143	1007, 1044(T)
Aus 144	1043(T)
Aus 150	1008, 1045(T)
Aus 151	992
Aus 153	1042(T)
Aus 155	1007
Aus 157	1042(T)
Aus 158	1043(T), 1044(T)
Aus 167	1009
Aus 170	1046(T)
Aus 194	995
Aus 195	995
Aus 197	994
Aus 200	994, 1012(T)
Aus 201	1012(T)
Aus 207	1011(T)
Aus 208	1011(T)
Aus 230	997
Aus 235	1023(T), 1024(T), 1025(T)
Aus 236	1023(T), 1024(T), 1025(T)
Aus 237	1017(T), 1023(T)
Aus 238	996, 1015(T), 1016(T), 1017(T), 1023(T)
Aus 241	998
Aus 249	1022(T)
Aus 250	1021(T)
Aus 256	1027(T)
Aus 257	1027(T), 1028(T)
Aus 260	1026(T)
Aus 261	1026(T)
Aus 262	1018(T), 1019(T)
Aus 263	1018(T)
Aus 264	1018(T)
Aus 270	999
Aus 293	1030(T)
Aus 299	1030(T)
Aus 312	1037(T)
Aus 318	1004
Aus 319	1004, 1031(T)
Aus 320	1031(T)
Aus 328	1034(T), 1035(T)
Aus 342	1006
Aus 349	1041(T)
Aus 367	999, 1026(T)
Aus 376	1020(T)
Aus 377	1020(T)
Aus 378	992
Aus 379	1029(T)

Aus Chart	Notices
Aus 487	1041(T), 1045(T), 1047(T)
Aus 490	999
Aus 519	1000
Aus 520	1000
Aus 644	1000
Aus 647	1029(T)
Aus 727	1004
Aus 728	1004
Aus 741	1003
Aus 754	1005
Aus 755	1005
Aus 766	1046(T)
Aus 787	1041(T)
Aus 789	1041(T)
Aus 797	1046(T)
Aus 801	1008, 1045(T)
Aus 808	994
Aus 809	994
Aus 814	1023(T)
Aus 815	1023(T), 1024(T)
Aus 822	999, 1026(T)
Aus 825	1014(T)
Aus 826	1014(T)
Aus 827	1027(T)
Aus 830	1018(T), 1019(T)
Aus 834	999
Aus 837	1020(T)
Aus 839	1020(T)
Aus 841	1020(T)
Aus 4601	1013(T)
Aus 4620	999
Aus 4621	999
Aus 4635	999
Aus 4708	1038(T)
Aus 4714	1038(T)
Aus 4722	1033(T), 1036(T)
Aus 4723	1001, 1035(T), 1038(T)
Aus 4727	1040(T)
AX 00200T	994, 1012(T)
AX 00201T	1012(T)
AX 00249S	1022(T)
AX 00260S	1026(T)
AX 00260T	1026(T)
AX 00262T	1018(T), 1019(T)
AX 00312U	1037(T)
AX 00319U	1004, 1031(T)
AX 00367S	999, 1026(T)
AX 00754S	1005
AX 00755S	1005
AX 00808S	994
AX 00809S	994
AX 00822S	999, 1026(T)
AX 04620U	999
AX 04621U	999

Aus Chart	Notices
AX 04708U	<a href="#">1038(T)</a>
AX 04714U	<a href="#">1038(T)</a>
AX 04722U	<a href="#">1033(T)</a> , <a href="#">1036(T)</a>
AX 04723U	<a href="#">1001</a> , <a href="#">1035(T)</a> , <a href="#">1038(T)</a>
AXA 0754S	<a href="#">1005</a>
AXA 0830T	<a href="#">1018(T)</a> , <a href="#">1019(T)</a>

INT Chart	Notices
INT 601	<a href="#">1013(T)</a>
INT 620	<a href="#">999</a>
INT 621	<a href="#">999</a>
INT 635	<a href="#">999</a>
INT 708	<a href="#">1038(T)</a>
INT 714	<a href="#">1038(T)</a>
INT 722	<a href="#">1033(T)</a> , <a href="#">1036(T)</a>
INT 723	<a href="#">1001</a> , <a href="#">1035(T)</a> , <a href="#">1038(T)</a>
INT 727	<a href="#">1040(T)</a>

**992 AUSTRALIA - Products**  
 Australian Hydrographic Service (AA770942)

**New Edition**

<i>Chart</i>	<i>Published</i>	<i>Title and description of amendments</i>	<i>Scale</i>	<i>Index Chart</i>	<i>Price</i>
Aus 52	24/10/2014	Australia - North West Coast - Western Australia - Entrance Channel to Port Hedland 20° 05'·90 S – 20° 19'·90 S 118° 29'·07 E – 118° 38'·45 E <i>New edition with general updating throughout.</i>	1:25 000	Aus 5000	\$35.00
Aus 53	24/10/2014	Australia - North West Coast - Western Australia - Approaches to Port Hedland 19° 51'·90 S – 20° 19'·90 S 143° 00'·86 E – 118° 38'·60 E <i>New edition with general updating throughout.</i>	1:50 000	Aus 5000	\$35.00
Aus 378	24/10/2014	Papua New Guinea - South Coast - Daru Roads to Kerema Bay 7° 27'·6 S – 9° 14'·0 S 143° 00'·1 E – 145° 49'·0 E <i>New edition with general updating throughout.</i>	1:300 000	Aus 5000	\$35.00

**New edition to be published shortly**

<i>Chart</i>	<i>Title</i>	<i>Scale</i>	<i>Expected Publication Date</i>
Aus 151	Australia - South Coast - Victoria - Western Port (Entrance and North Arm)	1:37 500	7 November 2014

**Chart permanently withdrawn**

<i>Chart</i>	<i>On publication of new chart</i>
Aus 52	Aus 52
Aus 53	Aus 53
Aus 378	Aus 378

For further details refer to the AHS website at [www.hydro.gov.au](http://www.hydro.gov.au) for new edition and new chart stock arrival information.

When placing orders with a chart agent, mariners should advise whether their order pertains to the current edition or the new edition.

**993 AUSTRALIA - Product - Amendment to Seafarers Handbook for Australian Waters AHP20**  
 Australian Maritime Safety Authority (AA765233)

Chapter 10 - REEFVTS

<i>Delete</i>	pages 163 to 170
<i>Insert</i>	accompanying block (pages 163 to 168)

**994\* AUSTRALIA - NEW SOUTH WALES - Port Jackson - North Head - Wreck southeastwards**

S Willan (AA769375)

**Aus 197 [948/2014]**

Insert	safe clearance depth, 60m, enclosed by danger circle with legend, Wk	33° 50'.81 S	151° 21'.10 E
--------	--	--------------	---------------

**Aus 200 [948/2014]**

Insert	safe clearance depth, 60m, enclosed by danger circle with legend, Wk	33° 50'.811 S	151° 21'.099 E
--------	--	---------------	----------------

**Aus 808 [948/2014]**

Insert	safe clearance depth, 60m, enclosed by danger circle with legend, Wk	33° 50'.81 S	151° 21'.10 E
--------	--	--------------	---------------

**Aus 809 [948/2014]**

Insert	safe clearance depth, 60m, enclosed by danger circle with legend, Wk	33° 50'.81 S	151° 21'.10 E
--------	--	--------------	---------------

**AX 00200T [948/2014]**

Insert	safe clearance depth, 60m, enclosed by danger circle with legend, Wk	33° 50'.811 S	151° 21'.099 E
--------	--	---------------	----------------

**AX 00808S [948/2014]**

Insert	safe clearance depth, 60m, enclosed by danger circle with legend, Wk	33° 50'.81 S	151° 21'.10 E
--------	--	--------------	---------------

**AX 00809S [948/2014]**

Insert	safe clearance depth, 60m, enclosed by danger circle with legend, Wk	33° 50'.81 S	151° 21'.10 E
--------	--	--------------	---------------

**995\* AUSTRALIA - NEW SOUTH WALES - Port Kembla - Infrastructure**

Port Authority of New South Wales (DHDB 2717033)

**Aus 194 [898/2014]**

Insert	accompanying block	34° 28'.4 S	150° 54'.6 E
--------	--------------------	-------------	--------------

**Aus 195 [207/2014]**

Insert	accompanying block	34° 28'.3 S	150° 54'.4 E
--------	--------------------	-------------	--------------

**996\* AUSTRALIA - QUEENSLAND - Brisbane River - Shafston Reach - Infrastructure**

Former Notice - 168(T)/2014 is cancelled

Maritime Safety Queensland (AA765177)

**Aus 238 [766/2014]**

Insert	accompanying block	27° 28'.2 S	153° 02'.3 E
--------	--------------------	-------------	--------------

**Aus 238 (plan, Town Reach and Shafston Reach) [766/2014]**

Insert	accompanying block	27° 28'.2 S	153° 02'.3 E
--------	--------------------	-------------	--------------

**997\* AUSTRALIA - QUEENSLAND - Gold Coast - Light buoy**

Maritime Safety Queensland Notice 580(T)/2014 (AA769685)

**Aus 230 [675/2014]**

Move	light buoy	27° 57'.91 S	153° 26'.55 E
	to	27° 57'.98 S	153° 26'.53 E

**998\* AUSTRALIA - QUEENSLAND - Great Sandy Strait - Turkey Island - Nav aids**

Australian Hydrographic Service (AA770335)

**Aus 241 [360/2014]**

Insert	starboard lateral conical light buoy, Fl.G.4s, without topmark	25° 31'.91 S	152° 56'.28 E
--------	--	--------------	---------------

Delete	light beacon	25° 32'.0 S	152° 56'.3 E
--------	--------------	-------------	--------------

**999\* AUSTRALIA - QUEENSLAND - High Peak Island to Heath Reef - Mandatory ship reporting system**  
 Australian Maritime Safety Authority (AA771362)

**Aus 270 (plan, Approaches to Heath Reef) [811/2014]**

Delete	radio reporting point desig K, centred on	13° 30'.0 S	143° 40'.4 E
--------	---	-------------	--------------

**Aus 367 [NE 1/8/2014]**

Move	radio reporting point desig Z, centred on	21° 56'.5 S	150° 48'.5 E
	to	21° 52'.5 S	150° 45'.0 E

**Aus 490 [899/2014]**

Amend	tidal stream data desig A position to 21° 54'.5 S 150 46.7 E	24° 07'.5 S	151° 27'.0 E
-------	--	-------------	--------------

Move	radio reporting point desig Z, centred on	21° 55'.4 S	150° 47'.7 E
	to	21° 52'.5 S	150° 45'.0 E
	tidal stream data symbol desig A, centred on	21° 53'.5 S	150° 46'.0 E
	to	21° 54'.5 S	150° 46'.7 E

**Aus 822 [NE 18/7/2014]**

Move	radio reporting point desig Z, centred on	21° 55'.4 S	150° 47'.7 E
	to	21° 52'.5 S	150° 45'.0 E

**Aus 834 [561/2014]**

Delete	radio reporting point desig K, centred on	13° 30'.0 S	143° 40'.4 E
--------	---	-------------	--------------

**Aus 4620 (INT 620) [809/2014]**

Amend	mandatory reporting point desig Z position to 21° 52'.50' 150° 45.00'	22° 26'.5 S	141° 51'.0 E
-------	---	-------------	--------------

Move	radio reporting point desig Z, centred on	21° 54'.0 S	150° 51'.0 E
	to	21° 52'.5 S	150° 45'.0 E

Delete	mandatory reporting point desig K	21° 39'.0 S	141° 51'.0 E
	radio reporting point desig K, centred on	13° 30'.0 S	143° 40'.4 E

**Aus 4621 (INT 621) [809/2014]**

Amend	mandatory reporting point desig Z position to 21° 52'.50' 150° 45.00'	15° 42'.0 S	156° 35'.0 E
-------	---	-------------	--------------

Move	radio reporting point desig Z, centred on	21° 54'.0 S	150° 51'.0 E
	to	21° 52'.5 S	150° 45'.0 E

**Aus 4635 (INT 635) [950/2014]**

Amend	mandatory reporting point desig Z position to 21° 52'.50' 150° 45.00'	27° 27'.0 S	148° 24'.0 E
-------	---	-------------	--------------

Move	radio reporting point desig Z, centred on	21° 54'.0 S	150° 51'.0 E
	to	21° 52'.5 S	150° 45'.0 E

**AX 00367S [1079/2013]**

Move	radio reporting point desig Z, centred on	21° 56'.5 S	150° 48'.5 E
	to	21° 52'.5 S	150° 45'.0 E

**AX 00822S [440/2014]**

Move	radio reporting point desig Z, centred on	21° 55'.4 S	150° 47'.7 E
	to	21° 52'.5 S	150° 45'.0 E

**AX 04620U [809/2014]**

Amend	mandatory reporting point desig Z position to 21° 52'.50' 150° 45.00'	22° 26'.5 S	141° 51'.0 E
-------	---	-------------	--------------

Move	radio reporting point desig Z, centred on	21° 54'.0 S	150° 51'.0 E
	to	21° 52'.5 S	150° 45'.0 E

Delete	mandatory reporting point desig K	21° 39'.0 S	141° 51'.0 E
	radio reporting point desig K, centred on	13° 30'.0 S	143° 40'.4 E

**AX 04621U [809/2014]**

Amend	mandatory reporting point desig Z position to 21° 52'.50' 150° 45.00'	15° 42'.0 S	156° 35'.0 E
-------	---	-------------	--------------

Move	radio reporting point desig Z, centred on	21° 54'.0 S	150° 51'.0 E
	to	21° 52'.5 S	150° 45'.0 E



**1000\* PAPUA NEW GUINEA - Kofulu Harbour - Depths**  
 HMAS Mermaid (DHDB 2692244)

**Aus 519 [731/2008]**

Insert	accompanying block	9° 02'.5 S	149° 19'.0 E
--------	--------------------	------------	--------------

**Aus 520 [381/2013]**

Insert	accompanying block	9° 02'.5 S	149° 17'.0 E
--------	--------------------	------------	--------------

**Aus 644 (plan, Tufi Harbour) [185/2013]**

Insert	accompanying block	9° 04'.0 S	149° 18'.5 E
--------	--------------------	------------	--------------

**1001 INDONESIA - Jawa - Tanjung Karangbata - Light**  
 BA Notice 42/4454/2014 (AA769369)

**Aus 4723 (INT 723) [903/2014]**

Insert	light, <i>Fl. 15M</i>	7° 46'.8 S	109° 37'.9 E
	light, <i>Fl. 15M</i>	8° 00'.0 S	110° 15'.5 E

**AX 04723U [903/2014]**

Insert	light, <i>Fl. 15M</i>	7° 46'.8 S	109° 37'.9 E
	light, <i>Fl. 15M</i>	8° 00'.0 S	110° 15'.5 E

**1002\* AUSTRALIA - WESTERN AUSTRALIA - Dampier - Mooring buoy**  
 Pilbara Ports Authority Notice 34/2014 (AA768767)

**Aus 58 [849/2014]**

Delete	lit mooring buoy	20° 37'.32 S	116° 44'.31 E
--------	------------------	--------------	---------------

**Aus 59 [849/2014]**

Delete	lit mooring buoy	20° 37'.32 S	116° 44'.31 E
--------	------------------	--------------	---------------

**1003\* AUSTRALIA - WESTERN AUSTRALIA - Dampier Archipelago - Anchoring prohibited limit**  
 UKHO (AA768905)

**Aus 741 [957/2014]**

Insert	anchoring prohibited limit, between	20° 22'.53 S	116° 41'.36 E
		20° 19'.58 S	116° 38'.94 E
		20° 18'.80 S	116° 44'.37 E
		20° 19'.82 S	116° 45'.06 E

Delete	anchoring prohibited limit, between	20° 22'.5 S	116° 41'.4 E
		20° 21'.1 S	116° 41'.4 E
		20° 19'.8 S	116° 45'.1 E

**1004\* AUSTRALIA - WESTERN AUSTRALIA - Eclipse Islands - Depths**  
 HMAS *Benalla* and HMAS *Shepparton* (DHDB 2727565)

**Aus 318 [816/2014]**

Insert	depth, 5m, enclosed by contour	14° 00'.36 S	126° 20'.29 E
	depth, 7 <sub>4</sub> m, enclosed by contour	13° 59'.99 S	126° 18'.34 E
	depth, 4 <sub>9</sub> m, semi enclosed by contour to E	13° 57'.51 S	126° 21'.54 E
Substitute	depth, 1 <sub>9</sub> m, for depth, 2 <sub>3</sub> m	13° 52'.3 S	126° 26'.5 E
	depth, 7 <sub>4</sub> m, for depth, 5m	14° 02'.1 S	126° 14'.1 E
Delete	rock and enclosing danger circle	13° 58'.7 S	126° 17'.4 E
	depth, 9 <sub>1</sub> m (a)	13° 55'.4 S	126° 22'.2 E
	depth, 5 <sub>4</sub> m (b), and contour enclosing (a) and (b)	13° 57'.5 S	126° 21'.5 E
	depth, 10 <sub>5</sub> m	14° 00'.0 S	126° 18'.8 E
	depth, 9 <sub>4</sub> m, and enclosing contour	14° 00'.4 S	126° 19'.8 E

**Aus 319 [816/2014]**

Substitute	depth, 7 <sub>4</sub> m, for depth, 5m	14° 02'.1 S	126° 14'.1 E
Delete	rock and enclosing danger circle	13° 58'.7 S	126° 17'.4 E

**Aus 727 [804/2013]**

Insert	depth, 14 <sub>8</sub> m, enclosed by contour	13° 56'.71 S	126° 22'.25 E
	depth, 1 <sub>9</sub> m, and extend contour SW to enclose	13° 52'.31 S	126° 26'.45 E
	depth, 5m, enclosed by contour	14° 00'.36 S	126° 20'.29 E
	depth, 7 <sub>4</sub> m, enclosed by contour	14° 00'.72 S	126° 20'.11 E
	depth, 7 <sub>4</sub> m, enclosed by contour	13° 59'.99 S	126° 18'.34 E
	depth, 7 <sub>4</sub> m, enclosed by contour	14° 02'.07 S	126° 14'.10 E
Substitute	depth, 4 <sub>9</sub> m, for depth, 5 <sub>4</sub> m	13° 57'.5 S	126° 21'.5 E
Delete	depth, 9 <sub>1</sub> m, and enclosing contour	13° 55'.4 S	126° 22'.2 E
	depth, 8 <sub>4</sub> m, and enclosing contour	13° 56'.3 S	126° 22'.2 E
	depth, 6 <sub>5</sub> m, and enclosing contour	13° 57'.1 S	126° 22'.3 E
	depth, 8 <sub>4</sub> m, and enclosing contour	13° 52'.7 S	126° 26'.4 E
	depth, 2 <sub>3</sub> m	13° 52'.3 S	126° 26'.5 E
	rock and enclosing danger circle	13° 58'.7 S	126° 17'.4 E
	depth, 5m, and enclosing contour with legend, Rep (2002)	14° 02'.2 S	126° 14'.0 E
	depth, 10 <sub>5</sub> m	14° 00'.0 S	126° 18'.8 E
	depth, 9 <sub>4</sub> m, and enclosing contour	14° 00'.4 S	126° 19'.8 E

**Aus 728 [1075/2012]**

Insert	depth, 14 <sub>8</sub> m, enclosed by contour	13° 56'.71 S	126° 22'.25 E
	depth, 5m, enclosed by contour	14° 00'.36 S	126° 20'.29 E
	depth, 7 <sub>4</sub> m, enclosed by contour	14° 00'.72 S	126° 20'.11 E
	depth, 7 <sub>4</sub> m, enclosed by contour	13° 59'.99 S	126° 18'.34 E
	depth, 7 <sub>4</sub> m, enclosed by contour	14° 02'.07 S	126° 14'.10 E
Substitute	depth, 4 <sub>9</sub> m, for depth, 5 <sub>4</sub> m	13° 57'.5 S	126° 21'.5 E
	depth, 1 <sub>9</sub> m, for depth, 2 <sub>3</sub> m	13° 52'.3 S	126° 26'.5 E
Delete	depth, 9 <sub>1</sub> m, and enclosing contour	13° 55'.4 S	126° 22'.2 E
	depth, 8 <sub>4</sub> m, and enclosing contour	13° 56'.3 S	126° 22'.2 E
	depth, 6 <sub>5</sub> m, and enclosing contour	13° 57'.1 S	126° 22'.3 E
	depth, 8 <sub>4</sub> m, and enclosing contour	13° 52'.7 S	126° 26'.4 E
	rock and enclosing danger circle	13° 58'.7 S	126° 17'.4 E
	depth, 5m, and enclosing contour with legend, Rep (2002)	14° 02'.2 S	126° 14'.0 E
	depth, 10 <sub>5</sub> m	14° 00'.0 S	126° 18'.8 E
	depth, 9 <sub>4</sub> m, and enclosing contour	14° 00'.4 S	126° 19'.8 E

**AX 00319U [816/2014]**

**1004\* AUSTRALIA - WESTERN AUSTRALIA - Eclipse Islands - Depths**

Substitute	depth, 7 <sub>4</sub> m, for depth, 5m	14° 02'.1 S	126° 14'.1 E
Delete	rock and enclosing danger circle	13° 58'.7 S	126° 17'.4 E

**1005\* AUSTRALIA - WESTERN AUSTRALIA - Garden Island - Light buoy westwards**

Carnegie Wave Energy Ltd (AA771052)

**Aus 754 [NE 10/10/2014]**

Insert	special spherical light buoy, <i>Fl</i> (5)Y.20s, without topmark	32° 15'.08 S	115° 33'.69 E
--------	---	--------------	---------------

**Aus 755 [772/2014]**

Insert	special spherical light buoy, <i>Fl</i> (5)Y.20s, without topmark	32° 15'.08 S	115° 33'.69 E
--------	---	--------------	---------------

**AX 00754S [567/2014]**

Insert	special spherical light buoy, <i>Fl</i> (5)Y.20s, without topmark	32° 15'.08 S	115° 33'.69 E
--------	---	--------------	---------------

**AX 00755S [772/2014]**

Insert	special spherical light buoy, <i>Fl</i> (5)Y.20s, without topmark	32° 15'.08 S	115° 33'.69 E
--------	---	--------------	---------------

**AXA 0754S [772/2014]**

Insert	special spherical light buoy, <i>Fl</i> (5)Y.20s, without topmark	32° 15'.08 S	115° 33'.69 E
--------	---	--------------	---------------

**1006\* AUSTRALIA - SOUTH AUSTRALIA - Coffin Bay - Port Douglas - Depths**

HydroSurvey Australia (DHDB 2365994)

**Aus 121 (plan, Coffin Bay) [259/2014]**

Insert	accompanying block	34° 33'.0 S	135° 25'.0 E
--------	--------------------	-------------	--------------

**Aus 342 [981/2012]**

Insert	accompanying block	34° 33'.0 S	135° 25'.0 E
--------	--------------------	-------------	--------------

**1007\* AUSTRALIA - VICTORIA - Port Phillip - Ricketts Point to Point Cook - Nav aids**

Victorian Notice 168/2014 (AA770119), Australian Hydrographic Service (AA770861)

**Aus 143 [778/2014]**

Insert	special light beacon, <i>Fl</i> .Y.3s, without topmark	37° 51'.84 S	144° 52'.08 E
--------	--	--------------	---------------

Delete	light beacon	37° 51'.8 S	144° 52'.0 E
--------	--------------	-------------	--------------

**Aus 155 [778/2014]**

Insert	special beacon, with topmark	37° 59'.700 S	145° 01'.583 E
	special beacon, with topmark	37° 59'.350 S	145° 01'.183 E
	special beacon, with topmark	37° 51'.963 S	144° 52'.506 E
	special beacon, with topmark	37° 54'.922 S	144° 48'.257 E
	special beacon, with topmark	37° 55'.845 S	144° 48'.055 E
	special beacon, with topmark	37° 55'.942 S	144° 47'.431 E

Delete	special topmark	37° 51'.84 S	144° 52'.08 E
	delete legend, No1	37° 51'.86 S	144° 52'.14 E

**1008\* AUSTRALIA - VICTORIA - Western Port - Phillip Island - Pyramid Rock - Light buoy southwards**

Victorian Notice 180/2014 (AA772021), Transport Safety Victoria (AA769314)

**Aus 150 [629/2014]**

Insert	special spherical light buoy, <i>Fl</i> .Y.4s, without topmark	38° 34'.61 S	145° 12'.65 E
--------	--	--------------	---------------

**Aus 801 [810/2013]**

Insert	special spherical light buoy, <i>Fl</i> .Y.4s, without topmark	38° 34'.61 S	145° 12'.65 E
--------	--	--------------	---------------

**1009\* AUSTRALIA - TASMANIA - Port Dalrymple - Windmill Point - Depth**  
 HydroSurvey Australia (DHDB 1380090), Australian Hydrographic Service (AA770479)

**Aus 167 [1260/2012]**

Insert	depth, 12,m, enclosed by contour	41° 06'.552 S	146° 48'.828 E
--------	----------------------------------	---------------	----------------

Delete	depth, 36m	41° 06'.53 S	146° 48'.77 E
--------	------------	--------------	---------------

**1010 AUSTRALIA - Cumulative List of Australian Notices to Mariners - October 2014**  
 Australian Hydrographic Service (AA733945)

The Cumulative List of Australian Notices to Mariners - October 2014 is issued as an [accompanying supplement](#). It lists all permanent notices affecting charts in the Area of Australian Charting Responsibility published in the preceding two years since Edition 20 of 2012 dated 5 October 2012, and includes Edition 21 of 2014 dated 24 October 2014. It will be revised in April 2015.

A supplement is available on the website which is revised fortnightly.

**1011(T)/2014 AUSTRALIA - NEW SOUTH WALES - Newcastle - Depth information**

Former Notice - 959(T)/2014 is cancelled  
Newcastle Port Corporation (AA770291)

Available depths as at 8 October 2014:

<i>Berth</i>	<i>Metres</i>	<i>Remarks</i>
* Eastern Basin 1	11.5	
Eastern Basin 2 North of Ch 450	11.6	
* Eastern Basin 2 South of Ch 450	11.3	
Western Basin 3	11.6	
Western Basin 4	11.6	
Channel Berth	9.7	
Dyke 1	12.8	
Dyke 2	12.8	
Dyke 4	16.4	
Dyke 5	16.4	
Dyke 6	5.3	
* Mayfield 4 Ch 27 to 266	12.8	
* BHP Wharf 6 to Ch 1050	7.3	
Kooragang 2	11.6	
Kooragang 2 North Dolphin Ch 182 to 243	11.6	
Kooragang 2 South Dolphin Ch -92 to 00	11.4	
Kooragang 3 Ch -40 to 00	12.6	
Kooragang 3 Ch 00 to 220	13.2	
Kooragang 4	16.5	
Kooragang 5	16.5	
Kooragang 6	16.3	
Kooragang 7	16.3	
Kooragang 8	16.2	
Kooragang 9	16.3	
* Kooragang 10	16.2	
Throsby 1 Ch 850 to 1030	8.9	
Carrington Wharf		To be sounded as and when required
Foreshore Park Berth	5.9	
Elgo Wharf		To be sounded as and when required
<i>Channels</i>		
Entrance Approach	17.7	
Entrance Channel (18.0m)	17.8	
Entrance Channel (17.4m)	17.4	
Entrance Channel (16.8m)	16.8	
Entrance Channel (16.2m)	16.2	
Entrance Channel to Horseshoe	15.2	
Horseshoe	15.2	
Steelworks Channel to Swinging Basin	15.2	
Swinging Basin	15.2	
Hunter River South Arm (Kooragang 6 to buoy 16)	15.2	
Hunter River South Arm (buoy 16 to buoy 20)	15.2	
Basin Cutting	12.6	
Basin Area to Eastern & Western Basin Berths	12.3	
Basin Area to Throsby 1	9.2	
Stockton Crossing	3.6	
* Indicates new or revised entry.		

**Chart temporarily affected - Aus 207 - Aus 208****1012(T)/2014 AUSTRALIA - NEW SOUTH WALES - Port Jackson - Watsons Bay - Scientific instrument recovered**

Former Notice - 373(T)/2014 is cancelled  
Port Authority of New South Wales (AA770397)

Cancel this notice on receipt.

**Chart formerly affected - Aus 200 - Aus 201 - AX 00200T - AX 00201T**

**1013(T)/2014 AUSTRALIA - TASMAN SEA - Tasman Basin - Light buoy off station**

Australian Bureau of Meteorology (AA771552)

The light buoy (44° 51'.2 S 161° 43'.7 E) is drifting and currently in position 44° 47'.47 S 161° 49'.30 E (20 October 2014).

**Chart temporarily affected - Aus 4601 (INT 601)**

**1014(T)/2014 AUSTRALIA - QUEENSLAND - Abbot Point - Scientific instruments recovered**

*Former Notice* - 374(T)/2014 is cancelled

Maritime Safety Queensland (AA770945)

Cancel this notice on receipt.

**Chart formerly affected - Aus 825 - Aus 826**

**1015(T)/2014 AUSTRALIA - QUEENSLAND - Brisbane River - Town Reach - Drilling operations completed**

*Former Notice* - 52(T)/2014 is cancelled

Maritime Safety Queensland (AA770944)

Cancel this notice on receipt.

**Chart formerly affected - Aus 238**

**1016(T)/2014 AUSTRALIA - QUEENSLAND - Brisbane River - Hamilton Reach to South Brisbane Reach - Harbour works**

*Former Notices* - 781(T)/2014, 821(T)/2014 are cancelled

Maritime Safety Queensland Notice 596(T)/2014 (AA771248)

Construction works at the following City Cat terminals are in progress:

Bretts Wharf	27° 26'.40 S 153° 03'.72 E
Hawthorne	27° 27'.67 S 153° 03'.21 E
Oxford Street	27° 27'.02 S 153° 03'.14 E
Maritime Museum	27° 28'.91 S 153° 01'.70 E
QUT	27° 28'.58 S 153° 01'.50 E

Barges and tugs are on site and will monitor VHF Ch 12, Ch 13 and Ch 16. The areas will be marked by special light buoys.

Mariners are advised to navigate with caution in the area.

**Chart temporarily affected - Aus 238**

**1017(T)/2014 AUSTRALIA - QUEENSLAND - Brisbane River - Pelican Banks Reach to Upper Lytton Reach - Drilling operations**

Maritime Safety Queensland Notice 594(T)/2014 (AA771662)

Drilling operations are in progress between the following positions:

27° 25'.50 S 153° 07'.77 E
27° 25'.16 S 153° 08'.64 E
27° 25'.03 S 153° 08'.75 E
27° 23'.74 S 153° 09'.26 E.

If works are obscuring the lead lights, mariners are to contact Brisbane VTS on VHF Ch 12, who will have the working lights temporarily turned off to allow safe passage through Lytton Rocks Cutting.

Mariners are advised to navigate with caution in the area.

**Chart temporarily affected - Aus 237 - Aus 238**

**1018(T)/2014 AUSTRALIA - QUEENSLAND - Cairns - Depth information***Former Notice - 576(T)/2014 is cancelled*

Maritime Safety Queensland Notice 589(T)/2014 (AA770329)

Available depths as of 10 October 2014:

	<i>Metres</i>	<i>Remarks</i>
* Entrance Channel	8.5	
Crystal Swing Basin at:		
360 metre diameter	6.8	
380 metre diameter	6.4	
Swing Basin at:		
310 metre diameter	8.7	
320 metre diameter	7.8	
* Marlin Marina	4.2	
<i>Berths:</i>		
No 1	8.4	
No 2	8.5	
No 3	8.4	
No 4	8.4	
No 5	8.2	
No 6	8.1	between 500 metres and 550 metres
No 6	7.7	between 550 metres and 600 metres
No 7	9.9	
No 8	10.0	
No 10	9.3	
No 12	10.5	
Smiths Creek 1	4.7	
* Indicates revised entry.		

**Chart temporarily affected - Aus 262 - Aus 263 - Aus 264 - Aus 830 - AX 00262T - AXA 0830T****1019(T)/2014 AUSTRALIA - QUEENSLAND - Cairns - Dredging operations completed***Former Notice - 865(T)/2014 is cancelled*

Maritime Safety Queensland Notice 573(T)/2014 (AA769404)

Cancel this notice on receipt.

**Chart formerly affected - Aus 262 - Aus 830 - AX 00262T - AXA 0830T****1020(T)/2014 AUSTRALIA - QUEENSLAND - Kirkcaldie Reef to Derder Reef - Scientific instruments**

Australian Maritime Safety Authority Auscoast Warnings 224/2014, 225/2014, 227/2014 (AA770997, AA770998, AA771197)

Subsurface scientific instruments exist in the following positions:

10° 19'.11 S 142° 46'.87 E

10° 22'.20 S 143° 05'.37 E

10° 03'.61 S 143° 27'.22 E.

**Chart temporarily affected - Aus 376 - Aus 377 - Aus 837 - Aus 839 - Aus 841****1021(T)/2014 AUSTRALIA - QUEENSLAND - Mackay - Depth information***Former Notice - 783(T)/2014 is cancelled*

Maritime Safety Queensland Notice 590(T)/2014 (AA770351)

Available depths as at 13 October 2014:

<i>Remarks</i>	<i>Metres</i>
* Entrance Channel	8.5
Swing Basin	8.5
Berth No 1	11.1
Berth No 3	12.9
Berth No 3 & 4 composite	12.9
Berth No 4	11.0
Berth No 5	12.2
* Indicates revised entry.	

**Chart temporarily affected - Aus 250**

**1022(T)/2014 AUSTRALIA - QUEENSLAND - Mackay - Light beacon restored**

*Former Notice* - 158(T)/2013 is cancelled

Maritime Safety Queensland Notice 399/2013 (AA686480)

Cancel this notice on receipt.

**Chart formerly affected - Aus 249 - AX 00249S**



**1023(T)/2014 AUSTRALIA - QUEENSLAND - Moreton Bay - Brisbane River - Depth information**

Former Notice - 918(T)/2014 is cancelled

Brisbane Port Corporation (AA771668)

Available depths and under keel clearances (UKC) at 22 October 2014:

<i>Berth</i>	<i>Metres</i>	<i>Remarks</i>
Fisherman Islands No12	14.2	
Fisherman Islands No11	14.0	
* Fisherman Islands No10	14.1	
Fisherman Islands No9	14.2	
Fisherman Islands No8	14.0	
Fisherman Islands No7	14.0	
Fisherman Islands No6	14.1	
* Fisherman Islands No5	14.2	
Fisherman Islands No4	14.0	
* Fisherman Islands No3	14.0	
Fisherman Islands No2	14.2	
* Fisherman Islands No1	13.9	
Fisherman Islands Grain and Woodchip	13.0	
Caltex Fisherman Islands	14.6	
* Fisherman Islands Coal	14.0	
Fisherman Islands General Purpose	11.5	
* Luggage Point Pump Out Facility	13.2	
* BP Luggage Point	14.5	
* Caltex Products	10.3	
* Cement Australia Co Wharf	9.7	
* BP Products	10.9	
* Viva Energy	10.9	
Graincorp Liquid Terminal	10.3	
* Incitec North	10.1	
* Incitec South	10.6	
Pinkenba 1	10.4	
Pinkenba 2	10.4	
Riverside Marina	-	
Sugar Terminal	9.8	
Cairncross Fitting Out Wharf	7.1	
Cairncross Breasting Wharf	4.4	
Brisbane Naval Wharf	4.3	
* Maritime No1	9.1	
* Hamilton No4	10.3	
Hamilton No1	8.9	
* Brisbane Cruise Ship Terminal	9.0	
	<i>Metres</i>	<i>UKC/Remarks</i>
<i>Moreton Bay:</i>		
North West Channel	15.0	2.3 (280m width)
North West Bypass Channel	9.2	1.6
Spitfire Channel	15.0	1.5 (600m width)
East Knoll Bypass Channel	6.0	1.4
East Channel	15.0	1.5 (300m width from western side)
Main Channel (M8 - M9)	10.0	1.8
Entrance Channel (E5 - EBCN)	14.7	1.5
<i>Brisbane River:</i>		
Outer Bar Cutting	14.0	1.46
Inner Bar Cutting	14.0	1.46
Fisherman Islands Swing Basin	14.0	1.3
* Fisherman Islands Swing Basin (11.5)	11.5	0.6
River	9.1	0.6 / 0.9 (draft/tide)
Cement Australia Swing Basin	9.1	0.6 / 0.9 (draft/tide)
* Pinkenba Swing Basin	9.1	0.6 / 0.9 (draft/tide)
* Hamilton Swing Basin	9.1	0.6 / 0.9 (draft/tide)
* Indicates new or revised entry.		

**Chart temporarily affected - Aus 235 - Aus 236 - Aus 237 - Aus 238 - Aus 814 - Aus 815**

**1024(T)/2014 AUSTRALIA - QUEENSLAND - Moreton Bay - Mud Island to Caloundra - AIS trial**  
Maritime Safety Queensland Notice 597(T)/2014 (AA771660)

Virtual and synthetic AIS units exist as follows:

<i>Position</i>	<i>Remarks</i>	<i>Type</i>
27° 17'.43 S 153° 13'.38 E	Safe water mark	Virtual
27° 05'.88 S 153° 19'.37 E	Port lateral mark	Virtual
26° 48'.72 S 153° 10'.62 E	Safe water mark	Synthetic

**Chart temporarily affected - Aus 235 - Aus 236 - Aus 815**

**1025(T)/2014 AUSTRALIA - QUEENSLAND - Moreton Bay - Main Channel - Light beacon destroyed**  
Maritime Safety Queensland Notice 598(T)/2014 (AA771674)

The starboard lateral light beacon, *Fl.G. 1.5s* (27° 03'.43 S 153° 17'.67 E) has been destroyed; a starboard lateral light buoy, *Q.G.*, exists in situ.

**Chart temporarily affected - Aus 235 - Aus 236**

**1026(T)/2014 AUSTRALIA - QUEENSLAND - Shoalwater Bay - Live firing completed**

*Former Notice* - 923(T)/2014 is cancelled

Maritime Safety Queensland Notice 558(T)/2014 (AA767050)

Cancel this notice on receipt.

**Chart formerly affected - Aus 260 - Aus 261 - Aus 367 - Aus 822 - AX 00260T - AX 00260S - AX 00367S - AX 00822S**

**1027(T)/2014 AUSTRALIA - QUEENSLAND - Townsville - Dredging operations; light buoys**

*Former Notice* - 972(T)/2014 is cancelled

*Date* - Until 13 November 2014

Maritime Safety Queensland Notices 573(T)/2014, 587(T)/2014 (AA769404, AA770359)

The dredge *Brisbane* is conducting dredging operations in Sea Channel, Platypus Channel and Inner & Outer Harbour.

Special light buoys have been temporarily repositioned as follows:

19° 14'.58 S 146° 50'.39 E to 19° 14'.63 S 146° 50'.40 E

19° 14'.60 S 146° 50'.35 E to 19° 14'.66 S 146° 50'.38 E.

Mariners are advised to navigate with caution in the area.

**Chart temporarily affected - Aus 256 - Aus 257 - Aus 827**

**1028(T)/2014 AUSTRALIA - QUEENSLAND - Townsville - Ross Creek - Harbour works**

*Date* - Until 21 November 2014

Maritime Safety Queensland Notice 586(T)/2014 (AA770426, AA770855)

Harbour works associated with the construction of pontoons are in progress in the vicinity of positions 19° 15'.18 S 146° 49'.64 E and 19° 15'.24 S 146° 49'.60 E.

The barge *Sheerlegs* and support vessels *Swordfish* and *Punt 2* are on site and will monitor VHF Ch 16.

Mariners are advised to navigate with caution in the area.

**Chart temporarily affected - Aus 257**

**1029(T)/2014 PAPUA NEW GUINEA - Caution Bay - Light beacon destroyed**

National Maritime Safety Authority PNG Notice 32/2014 (AA771462)

The starboard lateral light beacon, *Fl.G.3s 6M G1* (9° 18'.30 S 146° 55'.72 E), has been destroyed.

**Chart temporarily affected - Aus 379 - Aus 647**

**1030(T)/2014 AUSTRALIA - TORRES STRAIT - Madge Reef - Light beacon destroyed**

Maritime Safety Queensland Notice 588(T)/2014 (AA770851, AA770852)

The port lateral light beacon, *Fl.R.2-5s* (10° 35'.34 S 142° 14'.18 E), has been destroyed.

A port lateral light buoy, *Fl.R.2-5s*, exists in position 10° 35'.35 S 142° 14'.14 E.

**Chart temporarily affected - Aus 293 - Aus 299**

**1031(T)/2014 AUSTRALIA - WESTERN AUSTRALIA - Browse Island - Pipeline operations northwestwards**

Date - Until 14 October 2015

Wilhelmsen Ships Service Pty Ltd (AA771437), Australian Maritime Safety Authority Auscoast Warning 228/2014 (AA771438)

DCV *Aegir* and support vessels *Pacific Rover*, *Pacific Responder* and *Pacific Vigour* are conducting pipeline installation works in the vicinity of position 13° 49'.25 S 123° 15'.27 E. A 2M radius clearance is requested around DCV *Aegir*.

Two lit mooring buoys, *Fl.Y.5s*, exist in positions 14° 01'.19 S 123° 16'.11 E and 14° 01'.19 S 123° 17'.22 E.

Mariners are advised to navigate with caution in the area.

**Chart temporarily affected - Aus 319 - Aus 320 - AX 00319U**

**1032(T)/2014 AUSTRALIA - WESTERN AUSTRALIA - Dampier - Harbour works**

Former Notice - 931(T)/2014 is cancelled

Dampier Port Authority Notice 39/2014 (AA770465)

Harbour works are in progress in an area marked by four special spar light buoys, *Fl.Y.2s*, bounded by the following positions:

20° 36'.76 S 116° 44'.87 E

20° 36'.76 S 116° 45'.00 E

20° 36'.56 S 116° 45'.00 E

20° 36'.56 S 116° 44'.87 E.

An exclusion zone exists in the area.

The dolphin and light, *Fl.R.3s* (20° 36'.73 S 116° 44'.93 E), have been removed.

Barge *Swanfleet* is on site and has deployed 5 anchors marked by special cylindrical buoys, *Fl.Y.2s*.

Special light buoys, *Fl.Y.2s*, exist in positions 20° 36'.68 S 116° 45'.07 E and 20° 36'.75 S 116° 45'.05 E.

Mariners are advised to navigate with caution in the area.

**Chart temporarily affected - Aus 59**

**1033(T)/2014 AUSTRALIA - WESTERN AUSTRALIA - Mermaid Reef - Drill rig northwards moved**

Former Notice - 708(T)/2014 is cancelled

MODU *Deepwater Millennium* (AA771616)

Cancel this notice on receipt.

**Chart formerly affected - Aus 4722 (INT 722) - AX 04722U**

**1034(T)/2014 AUSTRALIA - WESTERN AUSTRALIA - Montebello Islands - Mooring buoys northwestwards**

Former Notice - 934(T)/2014 is cancelled

Viking Seatech (AA770305, AA770310)

12 yellow mooring buoys, *Fl.3s*, exist within 1NM radius of position 19° 48'.7 S 115° 17'.7 E.

**Chart temporarily affected - Aus 328**

**1035(T)/2014 AUSTRALIA - WESTERN AUSTRALIA - Montebello Islands - Drill rig northwestwards***Former Notice* - 511(T)/2014 is cancelled*Date* - Until 15 November 2014

Chevron Australia Pty Ltd (AA770523)

Drill rig *Atwood Osprey* is conducting drilling operations in position 19° 56'.71 S 115° 19'.49 E.**Chart temporarily affected - Aus 328 - Aus 4723 (INT 723) - AX 04723U****1036(T)/2014 AUSTRALIA - WESTERN AUSTRALIA - Rowley Shoals - Drilling operations northwestwards***Date* - Until 20 December 2014

Woodside Energy Ltd (AA771616)

MODU *Deepwater Millennium* is conducting drilling operations in position 16° 46'.56 S 118° 14'.39 E.**Chart temporarily affected - Aus 4722 (INT 722) - AX 04722U****1037(T)/2014 AUSTRALIA - WESTERN AUSTRALIA - Sahul Banks - Mooring buoy***Former Notice* - 886(T)/2014 is cancelled*Date* - Until 14 November 2014

Viking Seatech (AA770588)

A yellow mooring buoy, *Fl.3s*, exists in position 10° 40'.18 S 126° 13'.68 E.**Chart temporarily affected - Aus 312 - AX 00312U****1038(T)/2014 INDIAN OCEAN - Mid-Indian Ocean Basin - Light buoy off station***Former Notice* - 801(T)/2014 is cancelled

Australian Bureau of Meteorology (AA770345)

The light buoy (13° 59'.0 S 110° 00'.0 E) is drifting and currently in position 12° 52'.52 S 77° 37'.82 E (13 October 2014).

**Chart temporarily affected - Aus 4708 (INT 708) - Aus 4714 (INT 714) - Aus 4723 (INT 723) - AX 04708U - AX 04714U - AX 04723U****1039(T)/2014 AUSTRALIA - SOUTH AUSTRALIA - Cape Jaffa - Dredging operations completed***Former Notice* - 802(T)/2014 is cancelled

Department of Planning, Transport and Infrastructure SA Notice 30/2014 (AA759978)

Cancel this notice on receipt.

**Chart formerly affected - Aus 127****1040(T)/2014 SOUTHERN OCEAN - Great Australian Bight - Seismic survey***Date* - Until 30 April 2015

Petroleum Geo-Services (AA771609)

Research vessel MV *Ramform Sovereign*, with a 8000m towed array, and support vessels MV *Unlimited* and MV *Pacific Crest* are conducting a survey in the area bounded by the following positions:

33° 14'.92 S 130° 50'.08 E

33° 44'.92 S 130° 50'.09 E

33° 59'.92 S 130° 30'.09 E

34° 24'.92 S 130° 30'.09 E

34° 24'.92 S 129° 35'.09 E

33° 54'.92 S 129° 05'.09 E

33° 14'.92 S 130° 15'.09 E.

**Chart temporarily affected - Aus 4727 (INT 727)**

**1041(T)/2014 AUSTRALIA - VICTORIA - Port Campbell to King Island - Seismic survey**

Date - Until 3 December 2014

Origin Energy (AA770599), MV *Polarcus Asima* (AA771397, AA771559)

Survey vessel *Polarcus Asima*, with a 5600m towed array, and support vessels *Offshore Discovery*, *Northern Star*, *Dell Richey II* and *Investigator* are conducting a survey between 30 October and 7 November in the area bounded by the coast and the following positions:

38° 35'.24 S 142° 49'.84 E  
 38° 36'.21 S 142° 48'.90 E  
 38° 36'.57 S 142° 49'.52 E  
 38° 37'.09 S 142° 49'.31 E  
 38° 37'.60 S 142° 51'.32 E  
 38° 39'.84 S 142° 50'.47 E  
 38° 41'.38 S 142° 55'.08 E  
 38° 41'.21 S 143° 00'.09 E  
 38° 38'.69 S 143° 00'.07 E  
 38° 37'.38 S 142° 59'.00 E.

The survey vessel, with a 7500m towed array, and support vessels will then conduct a survey between 7 November and 3 December in the area bounded by the following positions:

39° 32'.38 S 142° 50'.85 E  
 39° 44'.02 S 143° 04'.48 E  
 39° 17'.50 S 143° 36'.90 E  
 39° 07'.40 S 143° 23'.91 E.

**Chart temporarily affected - Aus 141 - Aus 349 - Aus 487 - Aus 787 - Aus 789**

**1042(T)/2014 AUSTRALIA - VICTORIA - Port Phillip - Corio Bay - Nav aids**

Former Notice - 988(T)/2014 is cancelled

Victorian Notices 163(T)/2014, 170/2014 (AA769326, AA769853)

The following light beacons have been removed and replaced by temporary light buoys. Light characteristics remain the same:

Name	Removed beacon	Replacement buoy position
No1	38° 07'.14 S 144° 22'.19 E	38° 07'.09 S 144° 22'.19 E
No3	38° 06'.77 S 144° 22'.24 E	38° 06'.82 S 144° 22'.23 E
No11	38° 07'.45 S 144° 22'.81 E	38° 07'.45 S 144° 22'.88 E
No13	38° 07'.34 S 144° 22'.36 E	38° 07'.36 S 144° 22'.42 E.

Mariners are advised to navigate with caution in the area.

**Chart temporarily affected - Aus 153 - Aus 157**

**1043(T)/2014 AUSTRALIA - VICTORIA - Port Phillip - South Channel - Exclusion zones removed**

Former Notice - 1346(T)/2011 is cancelled

Victorian Notice 162/2014 (AA770877)

Cancel this notice on receipt.

**Chart formerly affected - Aus 144 - Aus 158**

**1044(T)/2014 AUSTRALIA - VICTORIA - Port Phillip - Sorrento - Dredging operations**

Date - Until 30 November 2014

Victorian Notice 181(T)/2014 (AA771680)

Dredging operations are in progress between positions 38° 20'.62 S 144° 45'.35 E and 38° 20'.38 S 144° 44'.80 E.

All hazards to navigation will be marked by special light buoys, *Fl(4)Y.3s*.

Mariners are advised to navigate with caution in the area.

**Chart temporarily affected - Aus 143 - Aus 158**

**1045(T)/2014 AUSTRALIA - VICTORIA - Western Port - Phillip Island - Cape Woolamai - Scientific instrument southwestwards recovered**

*Former Notice* - 666(T)/2014 is cancelled

Victorian Notice 153(T)/2014 (AA766999)

Cancel this notice on receipt.

**Chart formerly affected - Aus 150 - Aus 487 - Aus 801**

**1046(T)/2014 AUSTRALIA - TASMANIA - Mercury Passage - Obstructions**

*Date* - Until 29 February 2016

Marine and Safety Tasmania Notice M108/2014 (AA771561)

Obstructions, 2m above the seabed, exist in an area bounded by the following positions:

42° 38'.78 S 148° 00'.56 E

42° 38'.78 S 148° 00'.76 E

42° 38'.92 S 148° 00'.76 E

42° 38'.92 S 148° 00'.56 E.

Anchoring is prohibited in the area.

Mariners are advised to navigate with caution in the area.

**Chart temporarily affected - Aus 170 - Aus 766 - Aus 797**

**1047(T)/2014 AUSTRALIA - TASMANIA - Three Hummock Island - Scientific instrument northeastwards**

*Date* - Until 30 April 2015

Origin Energy (AA770388, AA770423, AA770517)

A blue spherical light buoy, *Fl(5)Y.20s*, exists in position 39° 55'.15 S 145° 20'.95 E.

**Chart temporarily affected - Aus 487**

**1048(T)/2014 AUSTRALIA - TEMPORARY AND PRELIMINARY NOTICES**

Former Notice - 669(T)/2014 is cancelled  
 Australian Hydrographic Service (AA752840)

<i>Notice</i>	<i>Charts affected</i>	<i>Locality and Subject</i>
<b>434/2014</b>	Aus357 4644	<b>BASS STRAIT</b> Light unlit
<b>217/2014</b>	Aus196 198 199	<b>NEW SOUTH WALES</b> <i>Botany Bay</i> Depth information
<b>457/2013</b>	Aus197 204 215 489 809 4643 AX00215T 00809S	<i>Broken Bay</i> Light range reduced
<b>699/2013</b>	Aus197 200 201 AX00201T 63200	<i>Cabbage Tree Bay to Curl Curl Head</i> Scientific instruments
<b>697/2013</b>	Aus197 200 808 809 AX00808S 00809S 63200	<i>Cape Baily to Ben Buckler</i> Scientific instruments
<b>779/2014</b>	Aus204 217 AX00215T	<i>Hawkesbury River</i> Light buoy
<b>1011/2014</b>	Aus207 208	<i>Newcastle</i> Depth information
<b>497/2014</b>	Aus200 202 AX00202T	<i>Port Jackson</i> Scientific instrument
<b>410/2011</b> <b>864/2011</b> <b>574/2014</b>	Aus194 195 Aus194 195 Aus194	<i>Port Kembla</i> Spoil ground Obstruction Depth information
<b>337/2013</b>	Aus200 202 AX00202T	<i>Sydney</i> Harbour works
<b>906/2013</b>	Aus200 202 AX00202T	<i>Sydney Harbour</i> Depth information
<b>641/2014</b>	Aus23	<b>NORTHERN TERRITORY</b> <i>Apsley Strait</i> Light buoy off station
<b>910/2012</b> <b>1003/2012</b> <b>1148/2012</b> <b>518/2013</b> <b>919/2013</b> <b>70/2014</b> <b>178/2014</b> <b>789/2014</b> <b>790/2014</b> <b>827/2014</b> <b>927/2014</b>	Aus28 Aus24 26 AX72026 Aus26 28 AX72026 Aus26 AX00026T Aus24 26 27 28 AX00026T Aus26 28 AX00026T Aus24 Aus24 27 28 Aus26 28 AX00026T Aus24 26 27 29 309 316 722 AX00026T 00309T 00309U 00722T Aus28	<i>Darwin</i> Obstruction Obstructions Scientific instruments Obstruction Scientific instruments Scientific instruments Light altered Depth information Harbour works Rock dumping Light buoys
<b>698/2014</b> <b>974/2014</b>	Aus310 AX00310U Aus310 4721 AX00310U 04721U	<i>Evans Shoal</i> Scientific instruments eastwards Drill rig eastwards
<b>1146/2012</b>	Aus309 722 AX00309U 72309 72722	<i>Fenton Patches</i> Scientific instruments

**1048(T)/2014 AUSTRALIA - TEMPORARY AND PRELIMINARY NOTICES**

<i>Notice</i>	<i>Charts affected</i>	<i>Locality and Subject</i>
<b>699/2014</b>	Aus24 26 27 29 309 314 315 316 318 319 320 722 728 4721 4722 AX00026T 00309U 00309T 00314U 00315U 00319U 00722T 04721U 04722U	<b>WESTERN AUSTRALIA</b> Pipeline
<b>976/2014</b>	Aus43 52 53 309 311 312 314 315 316 319 320 322 326 722 739 740 4721 4722 AX00309T 00309U 00311U 00312U 00314U 00315U 00319U 00322U 00722T 04721U 04722U	Survey operations
<b>1210/2011</b>	Aus268	<b>QUEENSLAND</b> <i>Airlie Beach</i> Obstructions
<b>167/2014</b>	Aus252 253 268	Wreck
<b>872/2011</b>	Aus254 825	<i>Bait Reef</i> Light beacon destroyed
<b>269/2014</b>	Aus268	<i>Bowen</i> Wreck
<b>633/2014</b>	Aus238	<i>Brisbane River</i> Harbour works
<b>734/2014</b>	Aus238	Lights altered
<b>1016/2014</b>	Aus238	Harbour works
<b>1017/2014</b>	Aus237 238	Drilling operations
<b>105/2013</b>	Aus243 817 818	<i>Bundaberg</i> Obstruction northeastwards
<b>634/2014</b>	Aus242 243	Depth information
<b>222/2014</b>	Aus242	<i>Burnett River</i> Tide board
<b>129/2014</b>	Aus263	<i>Cairns</i> Wreck
<b>575/2014</b>	Aus263 264	Harbour works
<b>864/2014</b>	Aus262 263 AX00262T	Light beacon unlit
<b>1018/2014</b>	Aus262 263 264 830 AX00262T AXA0830T	Depth information
<b>1214/2013</b>	Aus826 827	<i>Cape Bowling Green</i> Scientific instrument
<b>912/2014</b>	Aus826 827	Light buoy off station eastwards
<b>559/2013</b>	Aus256 827	<i>Cape Cleveland</i> Wreck
<b>1098/2013</b>	Aus831 AXA0830T	<i>Cape Tribulation</i> Wreck; exclusion zone
<b>653/2013</b>	Aus270	<i>Cooktown</i> Depth information
<b>414/2014</b>	Aus270	Light buoys off station
<b>415/2014</b>	Aus270	Wreck
<b>635/2014</b>	Aus270	Dredging operations
<b>602/2012</b>	Aus818	<i>Curtis Channel</i> Wreck
<b>447/2014</b>	Aus832	<i>Decapolis Reef</i> Light beacon; light buoy



**1048(T)/2014 AUSTRALIA - TEMPORARY AND PRELIMINARY NOTICES**

<i>Notice</i>	<i>Charts affected</i>	<i>Locality and Subject</i>
<b>859/2012</b>	Aus253 254	<i>Dent Island</i> Light beacon unlit; light buoy established
<b>211/2013</b>	Aus819	<i>Fitzroy River</i> Wreck
<b>418/2011</b>	Aus245	<i>Gladstone</i> Anchorage area
<b>470/2011</b>	Aus245 819	Scientific instruments
<b>704/2013</b>	Aus246 819	Scientific instruments
<b>579/2014</b>	Aus245 246 819	Scientific instruments
<b>868/2014</b>	Aus245 246 819	Scientific instruments
<b>965/2014</b>	Aus244 245 246 271 272	Depth information
<b>694/2012</b>	Aus230	<i>Gold Coast Seaway</i> Shoaling
<b>737/2012</b>	Aus230	Shoaling
<b>690/2014</b>	Aus247 490 819 820 AX00367S	<i>Great Keppel Island</i> Wreck
<b>463/2013</b>	Aus240 241	<i>Great Sandy Strait</i> Wreck
<b>1091/2011</b>	Aus249 250 AX0249E	<i>Hay Point</i> Scientific instruments
<b>1101/2013</b>	Aus249 250 AX00249S	AIS trial
<b>636/2014</b>	Aus249 823 AX00249S 00823S	Racon non operational
<b>691/2014</b>	Aus249 250 AX00249S	Depth information
<b>967/2014</b>	Aus249 250 823 AX00249S 00823S	Exclusion zone; light buoys
<b>318/2010</b>	Aus251 823 824 AX0823E	<i>Hesket Rock</i> Light beacon destroyed
<b>602/2013</b>	Aus259 828	<i>Hinchinbrook Channel</i> Wreck
<b>460/2012</b>	Aus252 254	<i>Hook Island</i> Light beacon destroyed
<b>1188/2010</b>	Aus251 252 824	<i>Io Reef</i> Light beacon destroyed; light buoy established
<b>968/2014</b>	Aus6	<i>Karumba</i> Depth information
<b>1020/2014</b>	Aus376 377 837 839 841	<i>Kirkcaldie Reef to Derder Reef</i> Scientific instruments
<b>757/2011</b>	Aus252	<i>Laguna Quays</i> Lights unlit; light beacons damaged
<b>758/2011</b>	Aus252	Shoaling
<b>737/2014</b>	Aus249 250 823 824 AX00249S 00823S	<i>Mackay</i> Scientific instruments
<b>1021/2014</b>	Aus250	Depth information
<b>814/2013</b>	Aus256	<i>Magnetic Island</i> Obstruction
<b>379/2014</b>	Aus256	Scientific instrument
<b>1104/2013</b>	Aus235	<i>Mooloolaba</i> Light beacon damaged

## 1048(T)/2014 AUSTRALIA - TEMPORARY AND PRELIMINARY NOTICES

<i>Notice</i>	<i>Charts affected</i>	<i>Locality and Subject</i>
		<i>Moreton Bay</i>
1020/2011	Aus236	Wreck; light buoy
600/2012	Aus236	Shoaling
645/2012	Aus236	Light beacon withdrawn
740/2012	Aus236	Light beacon
1085/2012	Aus236	Beacon destroyed
302/2013	Aus236	Light beacon destroyed; light buoy established
1268/2013	Aus236	Light beacon destroyed
229/2014	Aus236	Light beacon withdrawn
450/2014	Aus236	Scientific instruments
588/2014	Aus236 237	Dredging operations
740/2014	Aus236	Wreck
785/2014	Aus236	Shoaling
786/2014	Aus235 815	Scientific instruments
919/2014	Aus236	Scientific instrument
1023/2014	Aus235 236 237 238 814 815	Depth information
1024/2014	Aus235 236 815	AIS trial
1025/2014	Aus235 236	Light beacon destroyed
		<i>Mourilyan</i>
826/2011	Aus258	Depth information
		<i>Muddy Bay</i>
651/2013	Aus253 268	Harbour works
		<i>North Keppel Island</i>
512/2013	Aus820 AX00820S	Wreck
		<i>Oyster Point</i>
215/2013	Aus258	Shoaling; obstructions
		<i>Point Arkwright to Noosa Head</i>
920/2014	Aus815	Research operations
		<i>Port Alma</i>
210/2013	Aus265	Depth information
709/2013	Aus247 265	Scientific instruments
		<i>Port Douglas</i>
1274/2012	Aus270	Depth information
		<i>Pumicestone Channel</i>
1270/2013	Aus235 236	Wreck
826/2014	Aus235 815	Dredging operations
		<i>Rib Reef</i>
64/2014	Aus828	Light buoy withdrawn
		<i>Round Hill Head</i>
53/2013	Aus818	Wreck
		<i>Schooner Rock</i>
346/2014	Aus251 824	Light beacon destroyed
		<i>Shoalwater Bay</i>
696/2014	Aus260 367 822 AX00260S 00260T 00367S 00822S	Live firing
921/2014	Aus248 260 261 367 820 822 AX00260T 00260S 00261L 00367S 00822S	Live firing
		<i>Shute Harbour</i>
763/2010	Aus252 253	Wreck

**1048(T)/2014 AUSTRALIA - TEMPORARY AND PRELIMINARY NOTICES**

<i>Notice</i>	<i>Charts affected</i>	<i>Locality and Subject</i>
<b>1191/2010</b>	Aus252 253 824	<i>Surprise Rock</i> Light beacon destroyed; light buoy established
<b>59/2012</b>	Aus293 299	<i>Thursday Island</i> Depth information
<b>1061/2013</b>	Aus257	<i>Townsville</i> Wreck
<b>232/2014</b>	Aus256 257	Wreck
<b>873/2014</b>	Aus256 257	Depth information
<b>924/2014</b>	Aus257	Harbour works; dredging operations
<b>925/2014</b>	Aus257	Wreck; light buoy
<b>1027/2014</b>	Aus256 257 827	Dredging operations; light buoys
<b>1028/2014</b>	Aus257	Harbour works
<b>821/2013</b>	Aus831	<i>Trinity Bay</i> Light buoy withdrawn
<b>1274/2013</b>	Aus831 832	<i>Two Islands</i> Wreck
<b>167/2013</b>	Aus4	<i>Weipa</i> Depth information
<b>1223/2013</b>	Aus4	Light beacon destroyed
<b>1189/2010</b>	Aus252 254 824	<i>Whitsunday Group</i> Light beacon destroyed; light buoy established
<b>1193/2010</b>	Aus252 253 254	<i>Whitsunday Island</i> Light beacon destroyed; light buoy established
<b>1209/2012</b>	Aus252 253	Wreck
<b>1394/2010</b>	Aus254	<i>Whitsundays</i> Buoy off station
<b>1109/2013</b>	Aus252 254 824	Light beacon destroyed
<b>423/2014</b>	Aus262 AX00262T	<i>Yorkeys Knob</i> Light beacon destroyed
<b>SOUTH AUSTRALIA</b>		
<b>938/2014</b>	Aus485 780	<i>Fleurieu Peninsula</i> Hulk; prohibited area
<b>1344/2011</b>	Aus781	<i>Gulf St Vincent</i> Obstruction
<b>720/2008</b>	Aus137	<i>Port Adelaide</i> Shoaling
<b>515/2014</b>	Aus137	Harbour works
<b>939/2014</b>	Aus137	Depth information
<b>194/2014</b>	Aus121	<i>Port Douglas</i> Light beacon destroyed
<b>467/2014</b>	Aus348	<i>Port Macdonnell</i> Harbour works
<b>840/2014</b>	Aus136	<i>Port Pirie</i> Depth information
<b>71/2012</b>	Aus133	<i>Wallaroo</i> Depth information

**1048(T)/2014 AUSTRALIA - TEMPORARY AND PRELIMINARY NOTICES**

<i>Notice</i>	<i>Charts affected</i>	<i>Locality and Subject</i>
		<b>TASMAN SEA</b>
<b>1013/2014</b>	Aus4601	<i>Tasman Basin</i> Light buoy off station
		<b>TASMANIA</b>
<b>1074/2013</b>	Aus487 798 800	<i>Cape Barren Island</i> Scientific instruments
<b>199/2014</b>	Aus179 800	<i>Franklin Sound</i> Lights unreliable
<b>201/2014</b>	Aus179 800	Shoaling; light unreliable
<b>576/2012</b>	Aus171 796	<i>Frederick Henry Bay</i> Scientific instruments
<b>551/2014</b>	Aus171 796	Light beacon destroyed
<b>91/2010</b>	Aus169	<i>Georges Bay</i> Wreck
<b>149/2014</b>	Aus172	<i>Hobart</i> Beacon destroyed
<b>1189/2013</b>	Aus177 792	<i>Macquarie Harbour</i> Scientific instruments
<b>553/2014</b>	Aus177 792	Scientific instrument
<b>122/2013</b>	Aus170 766 797	<i>Maria Island</i> Scientific instruments
<b>1046/2014</b>	Aus170 766 797	<i>Mercury Passage</i> Obstructions
<b>309/2014</b>	Aus171 796	<i>Pipe Clay Head to Pitt Water</i> Scientific instruments
<b>103/2014</b>	Aus169 766	<i>Schouten Passage</i> Wreck
<b>1047/2014</b>	Aus487	<i>Three Hummock Island</i> Scientific instrument northeastwards
<b>894/2014</b>	Aus171 796	<i>Wedge Bay</i> Marine farm
<b>715/2014</b>	Aus178 799	<i>Wynyard</i> Light beacon destroyed
		<b>TIMOR SEA</b>
<b>876/2014</b>	Aus314 319 4721 4722 AX00314U 00319U 04721U 04722U	<i>Barracouta Shoal</i> Drill rig northeastwards
<b>223/2009</b>	Aus312 4721 AX0312F 4721F	<i>Sahul Banks</i> Navaid; racon non operational
<b>928/2014</b>	Aus312 4721 AX00312U 04721U	Drill rig
		<b>TORRES STRAIT</b>
<b>983/2013</b>	Aus292 293 299 700	<i>Channel Rock</i> Wreck; light buoy
<b>973/2014</b>	Aus376 377 840	<i>Darnley Island</i> Wreck
<b>1030/2014</b>	Aus293 299	<i>Madge Reef</i> Light beacon destroyed

**1048(T)/2014 AUSTRALIA - TEMPORARY AND PRELIMINARY NOTICES**

<i>Notice</i>	<i>Charts affected</i>	<i>Locality and Subject</i>
<b>VICTORIA</b>		
<b>131/2012</b>	Aus801	<i>Anderson Inlet</i> Shoaling
<b>1291/2010</b>	Aus357	<i>Ninety Mile Beach</i> Obstructions
<b>1041/2014</b>	Aus141 349 487 787 789	<i>Port Campbell to King Island</i> Seismic survey
<b>942/2010</b>	Aus153 157	<i>Port Phillip</i> Depth information
<b>1184/2013</b>	Aus143 144 158	Toe lines
<b>1185/2013</b>	Aus155	Light buoys
<b>197/2014</b>	Aus143	Harbour works
<b>607/2014</b>	Aus155	Harbour works
<b>660/2014</b>	Aus154	Harbour works; obstruction removed
<b>661/2014</b>	Aus143	Light beacon destroyed
<b>662/2014</b>	Aus143	Beacon destroyed
<b>760/2014</b>	Aus144 158	Shoaling
<b>841/2014</b>	Aus143 154 155	Light beacons destroyed; piers and jetties
<b>987/2014</b>	Aus143 155	Harbour works
<b>989/2014</b>	Aus154	Harbour works; dredging operations; silt curtain; retaining wall; light repositioned
<b>1042/2014</b>	Aus153 157	Nav aids
<b>1044/2014</b>	Aus143 158	Dredging operations
<b>514/2008</b>	Aus150 151	<i>Western Port</i> Shoaling northwards
<b>102/2014</b>	Aus150 151	AIS trial
<b>608/2014</b>	Aus150 151	Beacon destroyed
<b>667/2014</b>	Aus150 151 152	Drilling operations
<b>WESTERN AUSTRALIA</b>		
<b>1108/2012</b>	Aus109	<i>Albany</i> Harbour works
<b>504/2014</b>	Aus743 744	<i>Ashburton Road</i> Scientific instrument
<b>540/2014</b>	Aus64 743	Anchorage; pilot boarding place; recommended track; pilotage area
<b>929/2014</b>	Aus64 328 743 744	Pipeline operations
<b>425/2013</b>	Aus62 67 742	<i>Barrow Island</i> Anchorage
<b>523/2013</b>	Aus62 66 327 328 742 743	Harbour works
<b>283/2014</b>	Aus62 66	Scientific instrument
<b>650/2014</b>	Aus327 328	Pipeline
<b>829/2014</b>	Aus328 4723 AX04723U	Drill rig northwestwards
<b>878/2014</b>	Aus328	Mooring buoys northwestwards
<b>978/2014</b>	Aus62 66	Nav aids
<b>233/2014</b>	Aus50 51	<i>Broome</i> Scientific instrument
<b>922/2013</b>	Aus319 320 4721 4722 AX00319U 04721U 04722U	<i>Browse Island</i> Drill rig northwestwards
<b>930/2014</b>	Aus43 314 319 320 322 729 730 4721 4722 AX00314U 00319U 00322U 04721U 04722U	Survey operations
<b>979/2014</b>	Aus319 320 322 AX00319U 00322U	Pipeline operations northwestwards
<b>1031/2014</b>	Aus319 320 AX00319U	Pipeline operations northwestwards

**1048(T)/2014 AUSTRALIA - TEMPORARY AND PRELIMINARY NOTICES**

<i>Notice</i>	<i>Charts affected</i>	<i>Locality and Subject</i>
<b>228/2013</b>	Aus115	<i>Bunbury</i> Shoaling
<b>980/2014</b>	Aus68	<i>Cape Preston</i> Scientific instruments
<b>509/2014</b>	Aus73	<i>Carnarvon</i> Dredging operations
<b>661/2012</b>	Aus59	<i>Dampier</i> Light beacon damaged
<b>271/2013</b>	Aus57 741 742	Obstruction
<b>137/2014</b>	Aus58 59 60	Depth information
<b>981/2014</b>	Aus59	Light buoys
<b>1032/2014</b>	Aus59	Harbour works
<b>793/2014</b>	Aus119	<i>Esperance</i> Depth information
<b>428/2014</b>	Aus4723 AX04723U	<i>Exmouth Plateau</i> Scientific instruments
<b>141/2014</b>	Aus116	<i>Flinders Bay</i> Harbour works
<b>1057/2012</b>	Aus113	<i>Fremantle</i> Depth information
<b>1105/2012</b>	Aus112 AX63112	Light beacon
<b>433/2013</b>	Aus81	<i>Geraldton</i> Depth information
<b>834/2014</b>	Aus64 743 744	<i>Herald Reef to Ashburton Road</i> Scientific instruments
<b>1174/2013</b>	Aus114 117 AX00117T	<i>Kwinana</i> Scientific instrument
<b>883/2014</b>	Aus329 744 745	<i>Learmonth</i> Obstructions
<b>933/2014</b>	Aus52 53	<i>Manilya Sandbank</i> Scientific instrument
<b>512/2014</b>	Aus328	<i>Montebello Islands</i> Mooring buoys northwestwards
<b>797/2014</b>	Aus328 4723 AX04723U	Drill rig northwestwards
<b>835/2014</b>	Aus328 4723 AX04723U	Drill rig northwestwards
<b>983/2014</b>	Aus327 328	Platform northwards
<b>1034/2014</b>	Aus328	Mooring buoys northwestwards
<b>1035/2014</b>	Aus328 4723 AX04723U	Drill rig northwestwards
<b>613/2013</b>	Aus61 62 63 66 67 742 743	<i>Montebello Islands to Barrow Island</i> Lit mooring buoys
<b>710/2014</b>	Aus754 AX00754S AXA0754S	<i>Mullaloo</i> Light buoy
<b>86/2014</b>	Aus328 329 744	<i>North West Cape</i> Drill rig northwards
<b>299/2014</b>	Aus328 329 744 745 4723 4725 AX04723U	Light altered
<b>751/2014</b>	Aus328 329 744 4723 4725 AX04723U	FPSO off station
<b>984/2014</b>	Aus329 4723 4725 AX04723U	Seismic survey northwestwards

**1048(T)/2014 AUSTRALIA - TEMPORARY AND PRELIMINARY NOTICES**

<i>Notice</i>	<i>Charts affected</i>	<i>Locality and Subject</i>
<b>546/2014</b>	Aus64	<i>Onslow</i> Scientific instruments
<b>300/2014</b>	Aus743	<i>Passage Islands</i> Obstructions
<b>316/2013</b>	Aus334 754 AX00334S 00754S AXA0754S	<i>Perth</i> Scientific instruments westwards
<b>486/2013</b>	Aus84	<i>Port Gregory</i> Shoaling
<b>1068/2013</b> <b>88/2014</b> <b>837/2014</b>	Aus52 54 Aus53 739 740 Aus52 53 54	<i>Port Hedland</i> Depth information Light beacons unlit; light buoys Dredging operations
<b>713/2012</b>	Aus327	<i>Rankin Bank</i> Scientific instrument northeastwards
<b>1036/2014</b>	Aus4722 AX04722U	<i>Rowley Shoals</i> Drilling operations northwestwards
<b>756/2014</b> <b>757/2014</b> <b>885/2014</b> <b>1037/2014</b>	Aus314 AX00314U Aus312 AX00312U Aus312 4721 AX00312U 04721U Aus312 AX00312U	<i>Sahul Banks</i> Scientific instruments Pipeline southwards Drill rig southwards Mooring buoy
<b>615/2013</b>	Aus328 744 4060 4070 4708 4723 4725 AX04708U 04723U	<i>Serrurier Island</i> Mooring buoy off station northwards
<b>889/2014</b>	Aus64 743 744	<i>Thevenard Island</i> Wave gliders westwards
<b>428/2013</b>	Aus64 743	<i>Thevenard Island to Ashburton Road</i> Dredging operations; exclusion zones
<b>890/2014</b>	Aus740	<i>West Moore Island</i> Drilling operations
<b>985/2014</b>	Aus64 743 744	<i>West Reef to Fly Island</i> Scientific instruments
<b>712/2014</b>	Aus920	<b>INDIAN OCEAN</b> <i>Christmas Island</i> Harbour works
<b>1038/2014</b>	Aus4708 4714 4723 AX04708U 04714U 04723U	<i>Mid-Indian Ocean Basin</i> Light buoy off station
<b>304/2014</b>	Aus4070 4071	<i>Sumatera</i> Scientific instruments westwards
<b>75/2014</b>	Aus310 AX00310U	<b>INDONESIA</b> <i>Pulau Selaru</i> Scientific instruments southwestwards
<b>268/2014</b>	Aus399 4622	<b>PACIFIC OCEAN</b> Scientific instruments

**1048(T)/2014 AUSTRALIA - TEMPORARY AND PRELIMINARY NOTICES**

<i>Notice</i>	<i>Charts affected</i>	<i>Locality and Subject</i>
		<b>PAPUA NEW GUINEA</b>
		<i>Bougainville Island</i>
<b>279/2014</b>	Aus399 683 4622	Lights unlit
		<i>Cape Sueusat</i>
<b>771/2013</b>	Aus392 393 543 666	Light unlit
		<i>Caution Bay</i>
<b>1029/2014</b>	Aus379 647	Light beacon destroyed
		<i>Condor Point</i>
<b>166/2013</b>	Aus388 4622	Light unlit
		<i>Lae</i>
<b>904/2012</b>	Aus643	Dredging operations
		<i>Nuakata Passage</i>
<b>164/2013</b>	Aus628	Light beacon destroyed
		<i>Port Moresby</i>
<b>404/2008</b>	Aus379 505 4620	Fish aggregation device southwards
<b>918/2013</b>	Aus505 621	Light beacon destroyed
		<i>Vitiaz Strait</i>
<b>384/2014</b>	Aus386 387	Light unlit
		<b>SOUTHERN OCEAN</b>
		<i>Cape Sorell</i>
<b>549/2014</b>	Aus4709	Light buoys withdrawn southwestwards
		<i>Great Australian Bight</i>
<b>1040/2014</b>	Aus4727	Seismic survey



**HYDROGRAPHIC REPORTS**

Nil Reports

### NAVIGATION WARNINGS

The following radio messages have been received during the period to 23 October 2014. Signal copies of these messages may be destroyed. It is recommended that the reprint of Navigational Warnings should be kept in a file or a book divided into areas. Cancellation should be made on receipt of signals and reprints.

Rigs on location other than those listed in the latest Section III summary are the subject of Radio Navigational Warnings. Rigs in transit will not be the subject of Warnings.

### AUSCOAST WARNING

- 218 Cancelled.
- 219 Cancelled.
- 220 12 x 6 metre yellow buoys, *Fl.3s*, established within 1M of position 19° 48'.7 S 115° 17'.7 E. 2M clearance requested.
- 221 Drill rig *Nan Hai 6* in position 9° 47'.74 S 130° 13'.68 E. 2.5M clearance requested.
- 222 Drill rig *Atwood Osprey* in position 19° 56'.70 S 115° 19'.50 E. 2.5M clearance requested.
- 223 Cancelled.
- 224 Unmarked underwater oceanographic equipment deployed in position 10° 22'.20 S 143° 05'.37 E. 500m clearance requested.
- 225 Unmarked underwater oceanographic equipment deployed in position 10° 19'.11 S 142° 46'.87 E. 500m clearance requested.
- 226 A 1.2m yellow directional wave buoy, *Fl(5)Y.20s*, established in position 32° 15'.05 S 115° 33'.41 E.
- 227 Unmarked underwater oceanographic equipment deployed in position 10° 03'.61 S 143° 27'.22 E. 500m clearance requested.
- 228 Two yellow mooring buoys established in position 14° 01'.19 S 123° 16'.11 E and 14° 01'.19 S 123° 17'.22 E. 1M clearance requested.
- 229 Herald Patches buoy AIS, aid to navigation MMSI No 995031022 in position 10° 30'.17 S 142° 21'.52 E temporarily discontinued.
- 230 Cancelled.
- 231 Special purpose vessel *Viking Vision* conducting seismic survey towing 5M cable in an area bounded by 19° 00'.0 S to 20° 20'.0 S and 110° 17'.0 E to 112° 16'.0 E. 7M clearance requested.

### NAVAREA X WARNINGS

- 061 Cancelled.
- 062 Cancelled.
- 063 Cancelled.
- 064 Special purpose vessel *Fugro Discovery* conducting underwater towing operations in an area bounded by 34° 52'.0 S 92° 44'.0 E, 35° 06'.0 S 92° 59'.0 E, 38° 33'.0 S 87° 39'.0 E and 38° 16'.0 S 87° 24'.0 E. 10M clearance requested.

### Navigational warnings in force as at 230001UTC OCT 14.

#### Auscoast

2014 197 214 215 217 220 221 222 224 225 226 227 228 229 231

#### Navarea X

2014 064

### Summary of mobile drilling rigs as at 230001UTC OCT 14.

<i>Name</i>	<i>Position</i>
Nan Hai 6	09° 47'.74 S 130° 13'.68 E
Transocean Legend	11° 00'.40 S 126° 41'.90 E
Jack Bates	10° 38'.61 S 126° 11'.02 E
Stena Clyde	12° 17'.50 S 124° 19'.80 E
Noble Clyde Boudreaux	13° 49'.00 S 123° 19'.35 E
Deepwater Millennium	16° 20'.80 S 119° 43'.70 E
Atwood Osprey	19° 56'.70 S 115° 19'.50 E
Atwood Eagle	19° 58'.22 S 115° 12'.76 E
Ocean America	20° 24'.49 S 114° 50'.95 E
Deepwater Frontier	19° 49'.81 S 114° 34'.13 E
Atwood Falcon	21° 20'.95 S 114° 04'.40 E

### NAVAREA XIV WARNINGS

- 077 Cancelled.

Navarea XIV warnings in force as at 230001UTC OCT 14.

2014 Nil.

*Admiralty List of Radio Signals Volume 1* (ALRS Vol 1). See website below for further information.

Website:	<a href="http://www.amver.com">www.amver.com</a>
email:	<a href="mailto:amvermsg@amver.org">amvermsg@amver.org</a>

### 10.3 The Great Barrier Reef and Torres Strait Vessel Traffic Service - REEFVTS

1. The Great Barrier Reef and Torres Strait Ship Reporting System (REEFREP) was established as a mandatory ship reporting system under the International Convention for the Safety of Life at Sea (SOLAS Chapter V Regulation 11). REEFREP was formally adopted by the IMO's Maritime Safety Committee in Resolution MSC.52(66), and later amended by Resolutions MSC.161(78) and MSC.315(88).
2. Australia's Navigation Act 2012 gives the general power to make regulations to implement SOLAS (s339) and the related power to make Australian Marine Orders (s342). The laws about mandatory ship reporting are based on these powers.
3. REEFREP is an integral component of the Great Barrier Reef and Torres Strait Vessel Traffic Service (REEFVTS). Within the REEFVTS area ships identify themselves and report their intended passage through the region. This information, together with the monitoring and surveillance systems used by REEFVTS, assists with the proactive monitoring of a ship's transit through the Great Barrier Reef and Torres Strait.
4. The purpose of REEFVTS is to enhance navigational safety in Torres Strait and the Inner Route of the Great Barrier Reef thereby minimising the risk of a maritime accidents, and therefore avoid the pollution and damage to the marine environment. REEFVTS also provides the ability to assist with quick response in the event of any safety or pollution incident.

#### 10.3.1 System Overview

1. REEFVTS is manned 24 hours a day by personnel operating from a centre located in Townsville.
2. REEFVTS provides both an information service throughout the area and in specific areas

navigational assistance services. In summary, the services delivered include:

- Ship Traffic Information (STI) - REEFVTS predicts ship encounters and this information is sent to individual ships as STI, usually through Inmarsat C messaging. STI is specific for each individual vessel and there are no general broadcasts
  - Maritime Safety Information (MSI) - Information that is relevant to the ships location and intended movement is provided.
  - Navigational Assistance - REEFVTS may contact a ship if there is information available to REEFVTS which may help onboard decision making such as where the ship is heading into shallow water or deviating from a planned route.
3. REEFVTS may not know about all the hazards in the area. If a ship encounters any hazard that is not already included in Maritime Safety Information (e.g. a faulty navigational aid) they should advise REEFVTS so they may pass that information on to other mariners.

#### 10.3.2 REEFVTS Area

1. Nautical paper charts Aus 4620, 4635 and 490 provide details of the REEFVTS Area.
2. The REEFVTS Area is defined as:
  - (a) the Torres Strait between longitude 141° 45' E and 144° 00' E, including the Endeavour Strait and the Great North East Channel; and
  - (b) the waters of the Great Barrier Reef between (i) the Australian coast; and
  - (c) the outer edge of the Great Barrier Reef, as bounded by a line:
    - (i) starting from the outer edge of the Reef at latitude 10°40'.00 S, longitude 144°00' E; and
    - (ii) then running SE to latitude 21° 00' S, longitude 152° 40' E; and
    - (iii) then running E to latitude 21° 00' S, longitude 152° 55' E; and
    - (iv) then running SSE to latitude 23°42'.00 S, longitude 153°45'.00 E; and
    - (v) then running SSW to latitude 24°30'.00 S, longitude 153°35'.00 E; and

(vi) then running W to the intersection of latitude 24° 30'.00 S with the Australian coast at the low water line.

### 10.3.3 Mandatory Reporting Requirement

- The following categories of ships are required to report to REEFVTS:
  - all ships of 50 metres or greater length overall
  - all oil tankers, liquefied gas carriers, chemical tankers or ships coming within the INF Code, regardless of length
  - ships which are towing or pushing or being towed or pushed where the length of the tow exceeds 150 metres, or a vessel described in a) or b) is involved.
- Other vessels transiting the REEFVTS area may report on a voluntary basis.
- SOLAS Regulation V/11 does not apply to any warship, naval auxiliary, or any ship owned or

operated by government; however SOLAS does state that “such ships are encouraged to participate in ship reporting systems”.

- Mariners are referred to AMSA Marine Orders Part 56 for details of their obligations under REEFREP. This is available on the AMSA website.

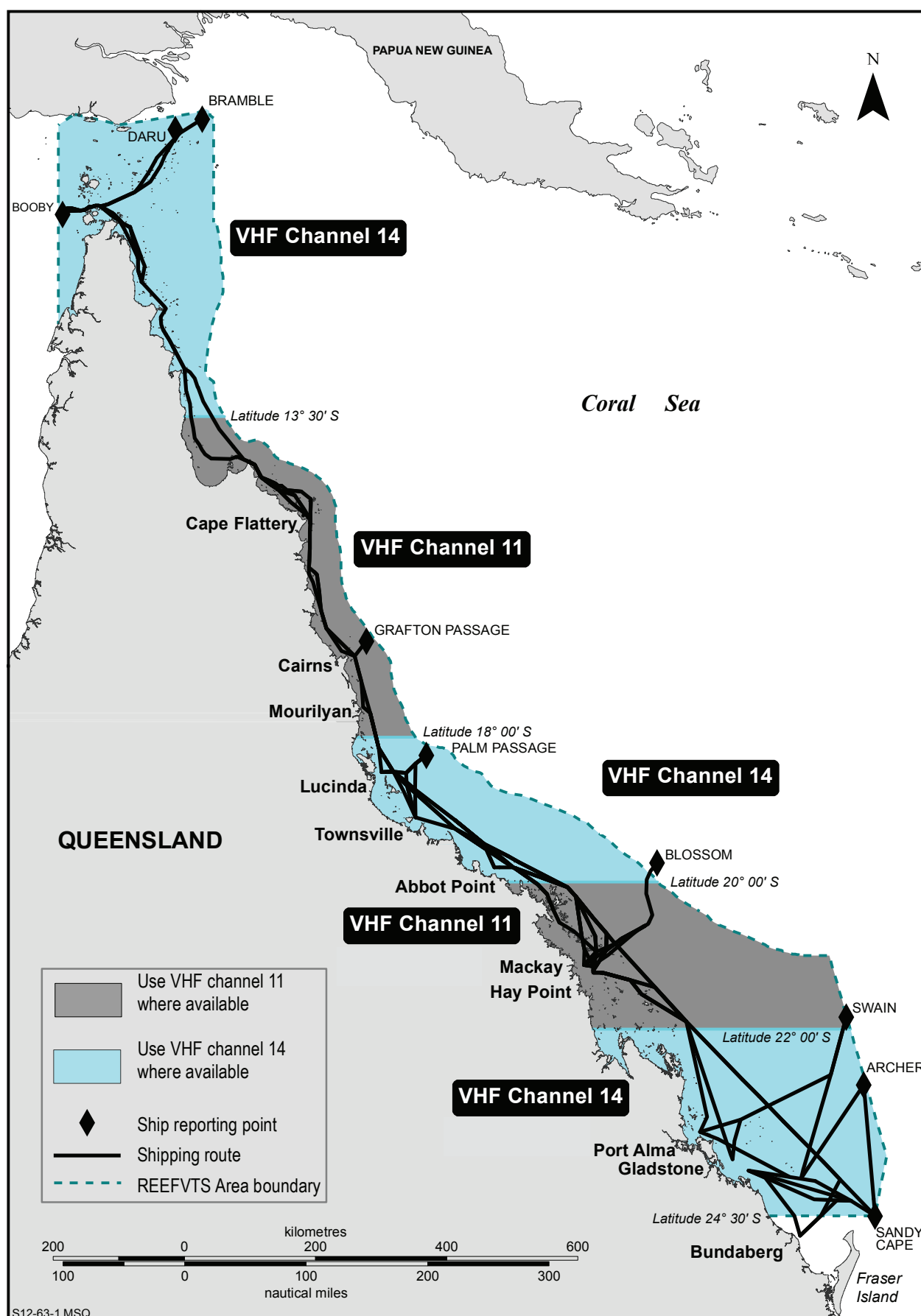
Website:	<a href="http://www.amsa.gov.au">www.amsa.gov.au</a>
----------	--

### 10.3.4 Communicating with REEFVTS

- A VHF radio network is available along the Queensland coast and Torres Strait to communicate with REEFVTS. REEFVTS keeps a listening watch at all times on the VHF working Channels 11 and 14. See REEFVTS VHF Channel overview.
- The relationship between VHF Channels and associated Mandatory Reporting Points are dependent on a ship's position in relation to the area of that Reporting Point (see table).

Name of Reporting Point and Aus chart designation	VHF Working Channel	Name of Reporting Point and Aus chart designation	VHF Working Channel
Bramble (A)	14	Bowling North (S)	14
Daru (B)	14	Townsville (N) (S1)	14
Twin (C)	14	Townsville (S) (S2)	14
Booby (D)	14	Bowling South (T)	14
Thursday Island (D1)	14	Abbot Point (T1)	14
Endeavour (E)	14	Blossom (U)	14
Alpha North (F)	14	Molle (southbound) (V)	11
Alpha South (G)	14	Cid Harbour (V1)	11
Shortland (H)	14	Shaw (northbound) (W)	11
Hannibal (I)	14	Edward (X)	11
Inset (J)	14	Creal (Y)	11
Heath (K)	11/14	Mackay (Y1)	11
Pipon (L)	11	Hay Point (NE) (Y3)	11
Two Isles (M)	11	Hay Point (S) (Y4)	11
Cape Flattery (M1)	11	High Peak (Z)	11
Gubbins East (N)	11	Swain (Z1)	11
Gubbins West (O)	11	Archer (Z2)	14
Grafton Passage (P)	11	Sandy Cape (Z3)	14
Cairns (P1)	11	Port Alma (Z4)	14
Barnard (Q)	11	Gladstone (N) (Z5)	14
Mourilyan (Q1)	11	Gladstone (E) (Z6)	14
Palm Passage (R)	14	Bundaberg (W) (Z7)	14
Lucinda (R1)	14	Bundaberg (E) (Z8)	14

To accompany Australian Notice to Mariners 993/2014



### Inmarsat C Messaging

3. REEFVTS will pay the cost of messages sent by Inmarsat C if the ship uses the special access code (SAC) 861 via POR LES 212. When setting up the Inmarsat C address book, select either: ASCII or 7-bit or IA5 for data presentation or character code.
4. Inmarsat C terminals must be logged into the Pacific Ocean Region (POR)

### Other Communications

5. If for any reason a ship cannot communicate via Inmarsat C or the VHF working channel, the ship must send the required information to REEFVTS in another way. The ship can use one of the following

Telephone:	+61 1300 721 293
Fax:	+61 7 4721 0633
email:	reefvts@vtm.qld.gov.au

6. If a ship's radio equipment fails and the ship cannot send the required reports to REEFVTS, the failure must be recorded in the ship's radio log book or the official log book.

## 10.4 REEFVTS Reports

1. The Master is responsible for ensuring the following reports are provided to REEFVTS:
  - Pre-Entry Position Report
  - Entry Report
  - Route Plan Report
  - Final Report
2. Additional Reports which may be sent include:
  - Route Deviation Report
  - Intermediate Position Reports
  - Defect Reports
3. Below is the reporting codes reference table:

ID	Message type (PER, ER, RP, FR, DR, IP, or IR)	
A	Ship name, call sign and IMO number	A/HAPPY SAILOR/ ABCD/1234567
B	Date and time (UTC)	B/010200UTC
C	Current position Either the name of the mandatory reporting point, or the current position (latitude and longitude)	C/1036S/14144E
F	Speed The planned speed of the ship in knots and tenths of a knot	F/13
H	Date, time (UTC) and point of entry to REEFVTS Area Either the name of the first mandatory reporting point entering the Area, or the position (latitude and longitude) of entry	H/010400UTC/BOOBY
J	Pilot Is a coastal pilot on-board? (State yes or no) If yes, give the pilot's last name and seafarer ID	J/NO or J/YES/BROWN/987654
K	Date, time (UTC) and point of exit from area Either the name of the last mandatory reporting point leaving the Area, or the position (latitude and longitude) of exit	K/042100UTC/SANDY CAPE
L	Route information Usually a Route Plan Report. If not, the name of the next two mandatory reporting points, or the course if the ship is not tracking between mandatory reporting points	L/INNER ROUTE DEEP DRAUGHT or L/ALPHA NORTH VIA VARZIN PASSAGE/ HANNIBAL
M	Communication methods Primary Inmarsat C details: Inmarsat Mobile Number (IMN), manufacturer and model (for Pre Entry reports). Ship's satellite phone number (for Entry Reports)	M/423456789/JRC/JUE- 85C or M/870773123456

To accompany Australian Notice to Mariners 993/2014

<b>O</b>	<b>Draught</b> Fore and aft, in metres and decimetres	O/FORE 11.5/AFT 11.3
<b>P</b>	<b>Cargo on-board</b> Give the normal name of cargo and state whether it is classified as hazardous (yes or no). Note: If required, this information may be given by non-voice means before the first REEFVTS report	P/BULK CHEMICALS/ DG YES
<b>Q</b>	<b>Defects, damage, deficiencies or other limitations</b> Describe details of any damage, failure or breakdown: (i) collision, grounding, fire, explosion, structural failure, flooding, cargo shifting; (ii) failure or breakdown of steering gear, propulsion plant, electrical generating system, essential shipboard navigational equipment	Include details as required
<b>R</b>	<b>Pollution/dangerous goods lost overboard</b> Give brief details of the type of pollution (oil, chemicals and so on) or dangerous goods lost overboard. State the ship's position	Include details as required
<b>U</b>	<b>Ship type, length (metres) and gross tonnage</b> Give details of the ship, including ship type, length (metres) and gross tonnage	U/TANKER/180/28000
<b>X</b>	<b>Remarks</b> Give any additional information which would help the navigational safety of shipping in the REEFVTS Area; for example, abnormal weather; faulty navigational aid; or any Dangerous Goods (DG), Harmful Substances (HS) or Marine Pollution (MP) incident reports	Include details as required

### 10.4.1 Pre-Entry Position Report

1. A Pre-Entry Position Report is required at least 2 hours prior to entering the REEFVTS area or departing from a port within the REEFVTS area.
2. The purpose of a pre-entry report is to advise REEFVTS of the ship intentions (e.g. entry to the REEFVTS area) and take the necessary steps to ensure that the ship's Inmarsat C terminal is operational when the vessel enters the region. The vessel's Inmarsat C terminal is to be logged into the Pacific Ocean Region.
3. The following message fields are required:

Mandatory fields:	A, B, C, H, K, M
-------------------	------------------

### 10.4.2 Entry Report

1. An Entry Report is required when a ship enters the REEFVTS area or departs from a port within the REEFVTS area. Masters are encouraged to provide a route plan with the Entry Report. However, it is understood that this may not be possible until a pilot boards.

2. The following message fields are required:

Mandatory fields:	A, B, C, F, J, K, L, O, P, Q, U, X
-------------------	------------------------------------

### 10.4.3 Route Plan Report

1. If a route plan is not included in the entry report, then it must be provided within 1 hour of entering the REEFVTS area or departing from a port within the REEFVTS area. More information on standard routes and associated chartlets for the Inner Route and Great North East Channel are detailed in the REEFVTS User Guide.
2. The following message fields are required

Mandatory fields:	A, B, C, F, K, L
-------------------	------------------

3. Route plan details are to be provided by one or more of the following methods:

#### Standard Route Plan

4. Most ships use this method. Predefined routes have been established based on the name of the route (e.g. Inner Route, Great North East Channel), the ship's draft (e.g. deep, moderate or shallow), and the name of any alternative legs intended to be taken that vary from the standard route



### Mandatory Reporting Points

- Route plans can be provided by reporting at Mandatory Reporting Points as the vessel progresses through the REEFVTS area. When a vessel reports, the next two Mandatory Reporting Points need to be advised. Where there are two or more routes between Mandatory Reporting Points, the planned (e.g. Alpha North to Hannibal via Varzin Passage). The mandatory reporting points and their locations are listed in Marine Order 56, which is available on the AMSA website.

### Waypoints

- The use of non-standard routes is accommodated by providing a list of the planned waypoints for the transit - either the latitude or longitude of the planned waypoints, the Mandatory Reporting Point names, or a combination of both.

#### 10.4.4 Final Report

- A final report is required when exiting the REEFVTS area, or when arriving at a port within the REEFVTS area.
- The following message fields are required:

Mandatory fields:	A, B, C
-------------------	---------

#### 10.4.5 Intermediate Position Reports

- In most cases, a ship's position is being tracked by sensors. Therefore intermediate position reports at the mandatory reporting points are not required.
- If the ship's position is not being tracked by sensors, a brief position report must be given as advised by REEFVTS, until sensor data is obtained, at which time intermediate position reports will no longer be required.
- The following message fields are required:

Mandatory fields:	A, B, C, F
-------------------	------------

#### 10.4.6 Route Deviation Report

- If the ship deviates from the Route Plan which was sent to REEFVTS, this information should be reported to REEFVTS before the deviation is made. However, in situations where a deviation is made without much warning, a report should be sent to REEFVTS as soon as possible.

- A new route plan report is to be sent to REEFVTS as per 10.4.3.

#### 10.4.7 Defect Report

- Reports must be provided immediately if a ship suffers damage, failure or breakdown which affects the ship safety.
- The following message fields are required:

Mandatory fields:	A, B, C, F
Additional fields: (if appropriate)	Q, R, X

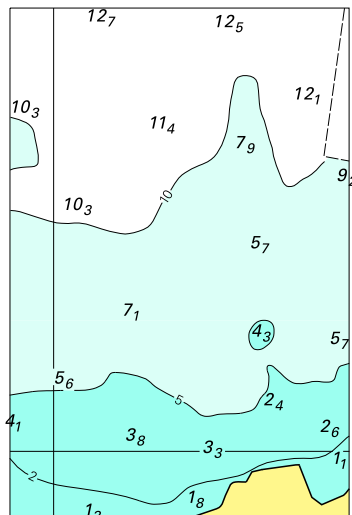
- The requirement to report all marine incidents including defects and deficiencies using form 'AMSA 18' and form 'AMSA 19' remains.

#### 10.4.8 Additional Information

- For more information the REEFVTS User Guide should be consulted for a more detailed description. Copies of the REEFVTS User Guide are available online, hardcopies from AMSA or can be requested via email.

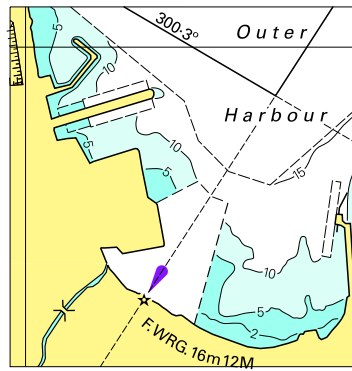
Websites:	www.amsa.gov.au www.msq.qld.gov.au
email:	reefvts@amsa.gov.au

To accompany Australian Notice to Mariners 995/2014



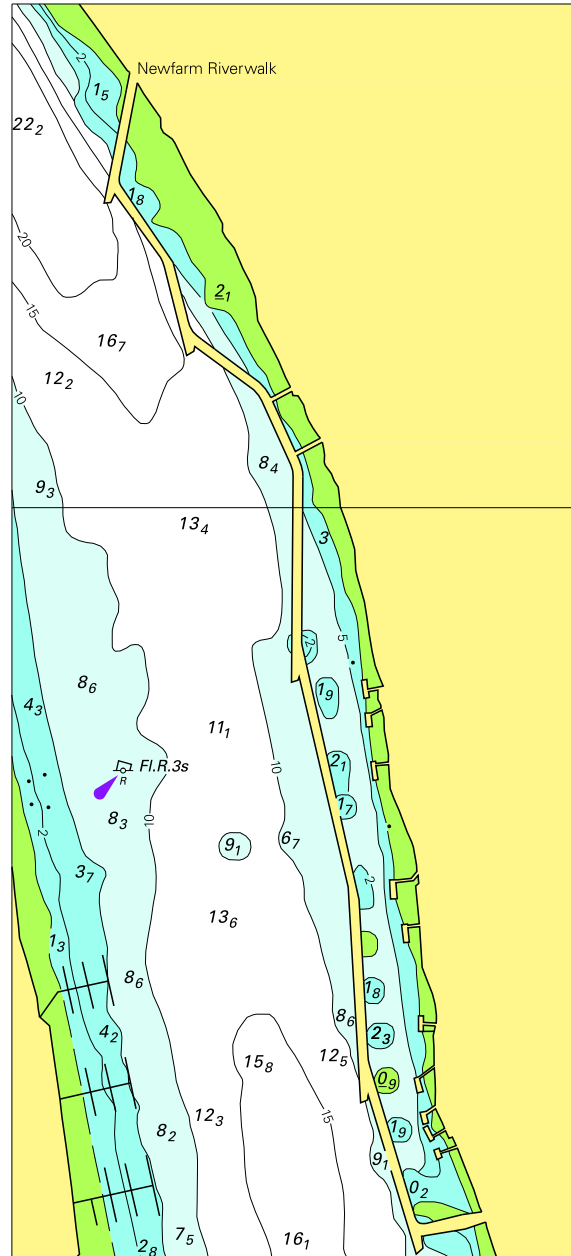
© Commonwealth of Australia 2014  
Block for chart Aus 194 (44.9 x 67.2mm)

*To accompany Australian Notice to Mariners 995/2014*



© Commonwealth of Australia 2014  
**Block for chart Aus 195** (46.0 x 47.6mm)

To accompany Australian Notice to Mariners 996/2014

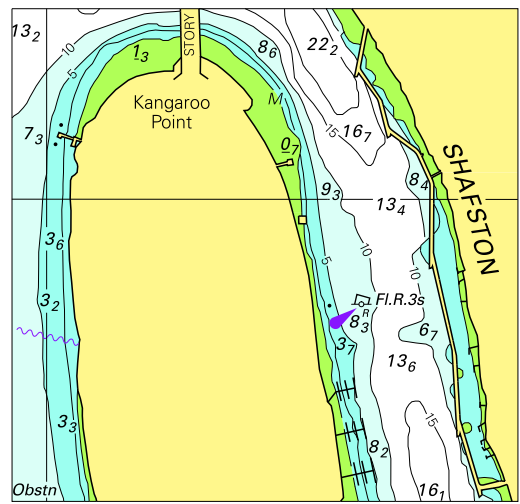


Block for Chart Aus 238

(75.2 x 166.1 mm)

© Commonwealth of Australia 2014

To accompany Australian Notice to Mariners 996/2014

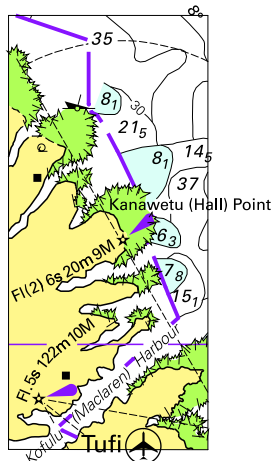


Block for Chart Aus 238

(66.9 x 65.2 mm)

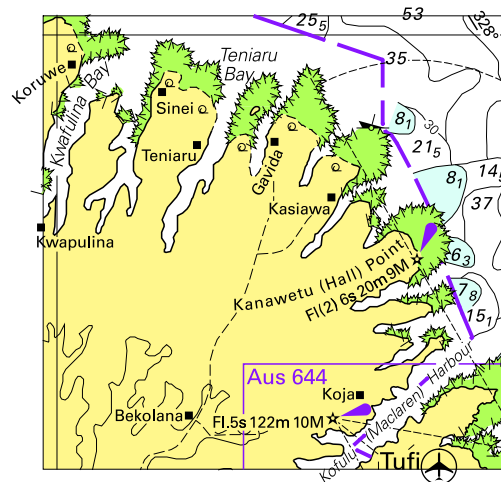
© Commonwealth of Australia 2014

To accompany Australian Notice to Mariners 1000/2014



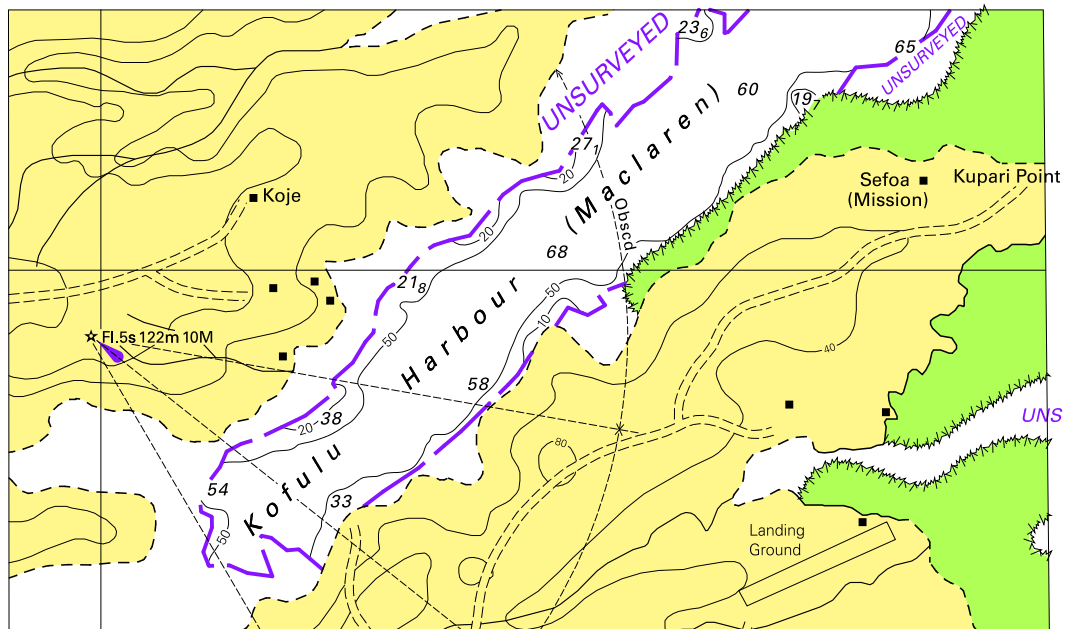
© Commonwealth of Australia 2014  
 Block for chart Aus 519 (26.4 x 57.4mm)

To accompany Australian Notice to Mariners 1000/2014



© Commonwealth of Australia 2014  
Block for chart Aus 520 (60.7 x 60.0mm)

To accompany Australian Notice to Mariners 1000/2014



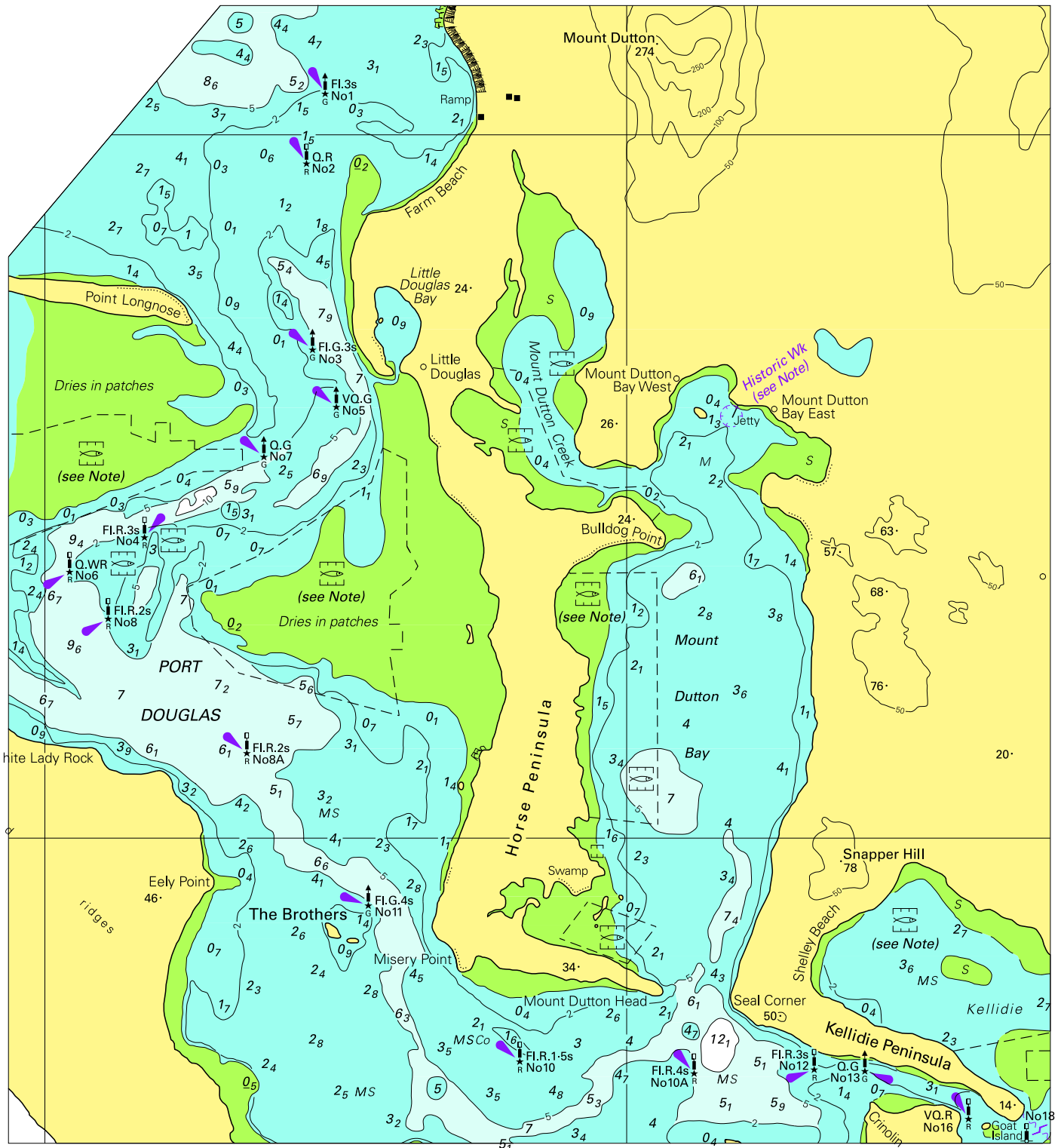
Block for chart Aus 644

© Commonwealth of Australia 2014

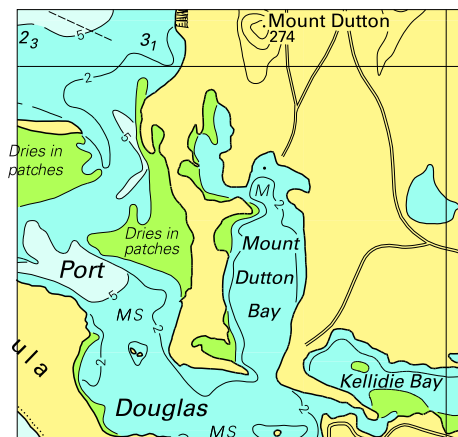
(137.6 x 82.2mm)



To accompany Australian Notice to Mariners 1006/2014



*To accompany Australian Notice to Mariners 1006/2014*



© Commonwealth of Australia 2014  
*Block for chart Aus 342* (59.3 x 56.6mm)