



10 October 2014

Edition 20

Australian Notices to Mariners are the authority for correcting Australian Charts and Publications

AUSTRALIAN NOTICES TO MARINERS

Notices 946 - 991



Published fortnightly by the Australian Hydrographic Service

Commodore B.K. BRACE RAN
Hydrographer of Australia

SECTIONS.

- I. Australian Notices to Mariners, including blocks and notes.
- II. Hydrographic Reports.
- III. Navigational Warnings.

SUPPLEMENTS.

- I. Tracings
- II. Cumulative List of Australian Notices to Mariners.
- III. Cumulative List of Temporary and Preliminary Australian Notices to Mariners.
- IV. Temporary and Preliminary Notices in force.
- V. Amendments to Admiralty List of Lights and Fog Signals (Vol K), Radio Signals (NP 281(2), 282, 283(2), 285, 286(4)) and Sailing Directions (NP 9, 13, 14, 15, 33, 34, 35, 36, 39, 44, 51, 60, 61, 62, 100, 136).

© Commonwealth of Australia 2014

This work is copyright. Apart from any use permitted under the Copyright Act 1968, no part may be reproduced by any process, adapted, communicated or commercially exploited without prior written permission from The Commonwealth represented by the Australian Hydrographic Service.

IMPORTANT NOTICE

This edition of Notices to Mariners includes all significant information affecting AHS products which the AHS has become aware of since the last edition. All reasonable efforts have been made to ensure the accuracy and completeness of the information, including third party information, on which these updates are based. The AHS regards third parties from which it receives information as reliable, however the AHS cannot verify all such information and errors may therefore exist. The AHS does not accept liability for errors in third party information.

GENERAL INSTRUCTIONS

The substance of these notices should be inserted on the charts affected.

Bearings are referred to the true compass and are reckoned clockwise from North; those relating to lights are given as seen by an observer from seaward. Positions quoted in permanent notices relate to the horizontal datum for the chart(s). When preliminary or temporary notices affect multiple charts, positions will be provided in relation to only one horizontal datum and that datum will be specified. When the multiple charts do not have a common horizontal datum, mariners will be required to adjust the position(s) for those charts not on the specified datum. The range quoted for a light is its nominal range. Depths are with reference to the chart datum of each chart. Heights are above mean high water springs or mean higher high water, as appropriate.

The capital letter (P) or (T) after the number of any notice denotes a preliminary or temporary notice respectively, which are contained separately at the end of the permanent notices. A star (*) adjacent to the number of a notice indicates that the notice is based on original information.

REPORTING OF DANGERS

Mariners are particularly requested to notify the AUSTRALIAN HYDROGRAPHIC SERVICE, Locked Bag 8801 Wollongong, NSW 2500 (Fax 02-4223 6599, e-mail Hydro.NTM@defence.gov.au or, alternatively by filling in and submitting the [Hydrographic Notes](#) forms located on the web site – www.hydro.gov.au), immediately on the discovery of new dangers or suspected dangers to navigation. For changes or defects in aids to navigation notify AusSAR (Fax 02-6230 6868 or email rccaus@amsa.gov.au).

AUTHORISED USE

Copies of Australian notices are available free of charge from the Australian Hydrographic Service (AHS) website (www.hydro.gov.au) and through the eNotices (email) service (www.hydro.gov.au/enotices/enotices.htm).

Individual Notices may be copied for the purpose of inserting Notice substance on official charts and publications. Paper copies may be printed by chart agents and distributed to customers on a cost recovery basis. Participating chart agents are listed on the AHS website as providing a 'Paper Notices to Mariners' service (www.hydro.gov.au/prodserv/distributors/distributors.htm). Copies of the notices may not be sold for profit without prior written agreement.

NUMERICAL INDEX OF NOTICES TO MARINERS

Edition No 20

Notices	Aus Chart, INT Chart, ENC Cell, AHP, BA Pubs
946	Aus 293, 296, 754, AX 00754S
947	Amendment to Australian National Tide Tables 2014 and 2015
948	Aus 197, 200, 806, 807, 808, 809, AX 00200T, 00808S, 00809S
949	Aus 221, 810, 811, 812, 813, 814
950	Aus 4635, 4643, INT 635, 643
951	Aus 821, 825
952	Aus 254
953	Aus 309, 722, AX 00309T, 00309U, 00722T
954	Aus 717
955	Aus 28
956	Aus 68, 742
957	Aus 740, 741
958	Aus 168
959(T)	Aus 207, 208
960(T)	Aus 246, 490, 819
961(T)	Aus 244, 245
962(T)	Aus 245
963(T)	Aus 245
964(T)	Aus 244, 245
965(T)	Aus 244, 245, 246, 271, 272
966(T)	Aus 244, 245, 246
967(T)	Aus 249, 250, 823, AX 00249S, 00823S
968(T)	Aus 6
969(T)	Aus 236
970(T)	Aus 236
971(T)	Aus 235, 236
972(T)	Aus 256, 257, 827
973(T)	Aus 376, 377, 840
974(T)	Aus 310, 4721, INT 721, AX 00310U, 04721U
975(T)	Aus 29, 309, 316, 722, AX 00309T, 00309U, 00722T
976(T)	Aus 43, 52, 53, 309, 311, 312, 314, 315, 316, 319, 320, 322, 326, 722, 739, 740, 4721, 4722, INT 721, 722, AX 00309T, 00309U, 00311U, 00312U, 00314U, 00315U, 00319U, 00322U, 00722T, 04721U, 04722U
977(T)	Aus 24, 26, 29, 43, 52, 53, 309, 311, 312, 314, 315, 316, 319, 320, 322, 326, 722, 739, 740, 4721, 4722, INT 721, 722, AX 00026T, 00309T, 00309U, 00311U, 00312U, 00314U, 00315U, 00319U, 00322U, 00722T, 04721U, 04722U
978(P)	Aus 62, 66
979(T)	Aus 319, 320, 322, AX 00319U, 00322U
980(T)	Aus 68
981(T)	Aus 59
982(T)	Aus 327, 741, 4722, 4723, INT 722, 723, AX 04722U, 04723U
983(T)	Aus 327, 328
984(T)	Aus 329, 4723, 4725, INT 723, 725, AX 04723U
985(T)	Aus 64, 743, 744
986(T)	Aus 134, 343, 776, AX 00343S, 00776S
987(T)	Aus 143, 155
988(T)	Aus 153, 157
989(T)	Aus 154
990(T)	Aus 173, 795, 796
991(T)	Aus 173, 795

NUMERICAL INDEX OF CHARTS AFFECTED

Edition No 20

Aus Chart	Notices
Aus 6	968(T)
Aus 24	977(T)
Aus 26	977(T)
Aus 28	955
Aus 29	975(T), 977(T)
Aus 43	976(T), 977(T)
Aus 52	976(T), 977(T)
Aus 53	976(T), 977(T)
Aus 59	981(T)
Aus 62	978(P)
Aus 64	985(T)
Aus 66	978(P)
Aus 68	956, 980(T)
Aus 134	986(T)
Aus 143	987(T)
Aus 153	988(T)
Aus 154	989(T)
Aus 155	987(T)
Aus 157	988(T)
Aus 168	958
Aus 173	990(T), 991(T)
Aus 197	948
Aus 200	948
Aus 207	959(T)
Aus 208	959(T)
Aus 221	949
Aus 235	971(T)
Aus 236	969(T), 970(T), 971(T)
Aus 244	961(T), 964(T), 965(T), 966(T)
Aus 245	961(T), 962(T), 963(T), 964(T), 965(T), 966(T)
Aus 246	960(T), 965(T), 966(T)
Aus 249	967(T)
Aus 250	967(T)
Aus 254	952
Aus 256	972(T)
Aus 257	972(T)
Aus 271	965(T)
Aus 272	965(T)
Aus 293	946
Aus 296	946
Aus 309	953, 975(T), 976(T), 977(T)
Aus 310	974(T)
Aus 311	976(T), 977(T)
Aus 312	976(T), 977(T)
Aus 314	976(T), 977(T)
Aus 315	976(T), 977(T)
Aus 316	975(T), 976(T), 977(T)
Aus 319	976(T), 977(T), 979(T)
Aus 320	976(T), 977(T), 979(T)
Aus 322	976(T), 977(T), 979(T)
Aus 326	976(T), 977(T)
Aus 327	982(T), 983(T)
Aus 328	983(T)
Aus 329	984(T)

Aus Chart	Notices
Aus 343	986(T)
Aus 376	973(T)
Aus 377	973(T)
Aus 490	960(T)
Aus 717	954
Aus 722	953, 975(T), 976(T), 977(T)
Aus 739	976(T), 977(T)
Aus 740	957, 976(T), 977(T)
Aus 741	957, 982(T)
Aus 742	956
Aus 743	985(T)
Aus 744	985(T)
Aus 754	946
Aus 776	986(T)
Aus 795	990(T), 991(T)
Aus 796	990(T)
Aus 806	948
Aus 807	948
Aus 808	948
Aus 809	948
Aus 810	949
Aus 811	949
Aus 812	949
Aus 813	949
Aus 814	949
Aus 819	960(T)
Aus 821	951
Aus 823	967(T)
Aus 825	951
Aus 827	972(T)
Aus 840	973(T)
Aus 4635	950
Aus 4643	950
Aus 4721	974(T), 976(T), 977(T)
Aus 4722	976(T), 977(T), 982(T)
Aus 4723	982(T), 984(T)
Aus 4725	984(T)
AX 00026T	977(T)
AX 00200T	948
AX 00249S	967(T)
AX 00309U	953, 975(T), 976(T), 977(T)
AX 00309T	953, 975(T), 976(T), 977(T)
AX 00310U	974(T)
AX 00311U	976(T), 977(T)
AX 00312U	976(T), 977(T)
AX 00314U	976(T), 977(T)
AX 00315U	976(T), 977(T)
AX 00319U	976(T), 977(T), 979(T)
AX 00322U	976(T), 977(T), 979(T)
AX 00343S	986(T)
AX 00722T	953, 975(T), 976(T), 977(T)
AX 00754S	946
AX 00776S	986(T)
AX 00808S	948

Aus Chart	Notices
AX 00809S	948
AX 00823S	967(T)
AX 04721U	974(T) , 976(T) , 977(T)
AX 04722U	976(T) , 977(T) , 982(T)
AX 04723U	982(T) , 984(T)

INT Chart	Notices
INT 635	950
INT 643	950
INT 721	974(T) , 976(T) , 977(T)
INT 722	976(T) , 977(T) , 982(T)
INT 723	982(T) , 984(T)
INT 725	984(T)

946 AUSTRALIA - Product

Australian Hydrographic Service (AA768835, AA769575), UKHO (AA768148)

New Edition

<i>Chart</i>	<i>Published</i>	<i>Title and description of amendments</i>	<i>Scale</i>	<i>Index Chart</i>	<i>Price</i>
Aus 293	10/10/2014	Australia - North Coast - Torres Strait - Prince of Wales Channel 10° 23'·40 S – 10° 36'·70 S 142° 04'·20 E – 142° 27'·16 E <i>New edition with general updating throughout; including new two way route.</i>	1:37 500	Aus 5000	\$35.00
Aus 296	10/10/2014	Australia - North Coast - Torres Strait - Prince of Wales Channel to Varzin Passage 10° 26'·50 S – 10° 39'·80 S 141° 48'·36 E – 142° 09'·60 E <i>New edition with general updating throughout; including new two way route.</i>	1:37 500	Aus 5000	\$35.00
Aus 754	10/10/2014	Australia - West Coast - Western Australia - Lancelin to Cape Peron 30° 59'·43 S – 32° 19'·74 S 114° 51'·71 E – 115° 51'·09 E <i>New edition with general updating throughout; including maritime boundaries.</i>	1:150 000	Aus 5001	\$35.00

New Miscellaneous Edition

<i>Chart</i>	<i>Published</i>	<i>Title</i>	<i>Scale</i>	<i>Remarks</i>
AX00754S	10/10/2014	Australia - West Coast - Western Australia - Lancelin to Cape Peron	1:150 000	Fleet use only

Chart permanently withdrawn

<i>Chart</i>	<i>On publication of new edition</i>
Aus 293	Aus 293
Aus 296	Aus 296
Aus 754	Aus 754
AX00754S	AX00754S

Australian National Tide Tables 2015

<i>AHP No</i>	<i>Title</i>	<i>Recommended price (incl GST)</i>	<i>retail</i>	<i>Remarks</i>
AHP114	AusTides 2015	\$59.95		Electronic Tide Tables (AusTides 2015) for Australia, Antarctica, Papua New Guinea, Solomon Islands and East Timor. Provides tidal data for 2014 and 2015. Available from accredited distribution agents

Admiralty publication

<i>NP No</i>	<i>Title</i>	<i>Date</i>	<i>Remarks</i>
NP34 & e-NP34	Indonesia Pilot Volume 2 (Seventh Edition) 2014.	9/10/2014	The Sixth Edition 2012 is cancelled.

For further details refer to the AHS website at www.hydro.gov.au for new edition and new chart stock arrival information.

When placing orders with a chart agent, mariners should advise whether their order pertains to the current edition or the new edition.

947 AUSTRALIA - Amendment to Australian National Tide Tables 2014 and 2015
 Australian Hydrographic Service (AA769483)

ANTT 2014

Page xxxiii

Amend Goods Island To Chart Datum AUS 299 NE 26 Sep 2014 0.0

Page xxxvii

Amend Thursday Island To Chart Datum AUS 299 NE 26 Sep 2014 0.0

ANTT 2015

Page xxxi

Amend Cairns To Chart Datum AUS 262 NE 15 Aug 2014 0.0
 Cairns To Chart Datum AUS 830 NE 15 Aug 2014 0.0

Page xxxii

Amend Dampier To Chart Datum AUS 57 NE 01 Aug 2014 0.0
 Dampier To Chart Datum AUS 58 NE 01 Aug 2014 0.0
 Dampier To Chart Datum AUS 59 NE 01 Aug 2014 0.0
 Dampier To Chart Datum AUS 60 NE 01 Aug 2014 0.0

Page xxxiii

Insert Gladstone To Chart Datum AUS 271 NC 29 Aug 2014 0.0
Amend Gladstone To Chart Datum AUS 244 NE 29 Aug 2014 0.0
 Goods Island To Chart Datum AUS 299 NE 26 Sep 2014 0.0

Page xxxv

Amend Leggatt Island To Chart Datum AUS 270 NE 15 Aug 2014 0.0
 Mourilyan Harbour To Chart Datum AUS 258 NE 15 Aug 2014 Subtract 0.1

Page xxxvi

Amend Port Douglas To Chart Datum AUS 270 NE 15 Aug 2014 0.0
 Port Douglas To Chart Datum AUS 830 NE 15 Aug 2014 0.0

Page xxxviii

Amend Thursday Island To Chart Datum AUS 299 NE 26 Sep 2014 0.0

Page xxxix

Amend Waddy Point To Chart Datum AUS 816 NE 01 Aug 2014 0.0

948* AUSTRALIA - NEW SOUTH WALES - Merimbula to Newcastle - Fish aggregating devices

Department of Primary Industries (AA766359)

Aus 197 [557/2014]

Amend	legend to (Nov-May)	33° 59'.7 S	151° 26'.5 E
	legend to (Nov-May)	33° 59'.3 S	151° 20'.7 E
	legend to (Nov-May)	33° 47'.0 S	151° 23'.0 E
	legend to (Nov-May)	33° 35'.6 S	151° 34'.9 E
	legend to (Nov-May)	33° 30'.1 S	151° 38'.3 E

Aus 200 [557/2014]

Amend	legend to (Nov-May)	33° 47'.04 S	151° 22'.60 E
-------	---------------------	--------------	---------------

Aus 806 [1169/2012]

Amend	legend to (Nov-May)	36° 58'.9 S	150° 15'.4 E
-------	---------------------	-------------	--------------

Aus 807 [1170/2012]

Insert	special conical light buoy, <i>Fl. Y. 4s</i> (Nov-May), without topmark	35° 22'.73 S	150° 41'.78 E
Amend	legend to (Nov-May)	35° 50'.0 S	150° 22'.0 E
	legend to (Nov-May)	34° 57'.7 S	150° 58'.0 E

Aus 808 [557/2014]

Insert	special conical light buoy, <i>Fl. Y. 4s</i> (Nov-May), without topmark	34° 33'.72 S	151° 00'.63 E
	special conical light buoy, <i>Fl. Y. 4s</i> (Nov-May), without topmark	34° 08'.36 S	151° 22'.62 E
Amend	legend to (Nov-May)	34° 57'.7 S	150° 58'.0 E
	legend to (Nov-May)	34° 41'.4 S	151° 00'.0 E
	legend to (Nov-May)	34° 27'.5 S	151° 05'.0 E
	legend to (Nov-May)	33° 59'.7 S	151° 27'.3 E
	legend to (Nov-May)	33° 59'.5 S	151° 21'.5 E
Delete	light buoy	34° 07'.6 S	151° 23'.3 E

Aus 809 [673/2014]

Amend	legend to (Nov-May)	33° 47'.1 S	151° 23'.3 E
	legend to (Nov-May)	33° 35'.7 S	151° 35'.2 E
	legend to (Nov-May)	33° 30'.1 S	151° 37'.8 E
	legend to (Nov-May)	33° 10'.1 S	151° 48'.5 E
	legend to (Nov-May)	32° 55'.5 S	151° 59'.4 E

AX 00200T [557/2014]

Amend	legend to (Nov-May)	33° 47'.04 S	151° 22'.60 E
-------	---------------------	--------------	---------------

AX 00808S [557/2014]

Insert	special conical light buoy, <i>Fl. Y. 4s</i> (Nov-May), without topmark	34° 33'.72 S	151° 00'.63 E
	special conical light buoy, <i>Fl. Y. 4s</i> (Nov-May), without topmark	34° 08'.36 S	151° 22'.62 E
Amend	legend to (Nov-May)	34° 57'.7 S	150° 58'.0 E
	legend to (Nov-May)	34° 41'.4 S	151° 00'.0 E
	legend to (Nov-May)	34° 27'.5 S	151° 05'.0 E
	legend to (Nov-May)	33° 59'.7 S	151° 27'.3 E
	legend to (Nov-May)	33° 59'.5 S	151° 21'.5 E
Delete	light buoy	34° 07'.6 S	151° 23'.3 E

AX 00809S [673/2014]

Amend	legend to (Nov-May)	33° 47'.1 S	151° 23'.3 E
	legend to (Nov-May)	33° 35'.7 S	151° 35'.2 E
	legend to (Nov-May)	33° 30'.1 S	151° 37'.8 E
	legend to (Nov-May)	33° 10'.1 S	151° 48'.5 E
	legend to (Nov-May)	32° 55'.5 S	151° 59'.4 E

949* AUSTRALIA - NEW SOUTH WALES - QUEENSLAND - Port Stephens to Tweed Heads - Fish aggregating devices

Department of Primary Industries (AA766359, AA768589)

Aus 221 [1245/2013]

Amend	legend to (Oct-Jun)	30° 14'.9 S	153° 21'.9 E
	legend to (Oct-Jun)	29° 52'.8 S	153° 26'.4 E

Aus 810 [1174/2012]

Amend	legend to (Oct-Jun)	32° 47'.1 S	152° 25'.2 E
	legend to (Oct-Jun)	32° 13'.3 S	152° 41'.2 E

Aus 811 [613/2014]

Insert	special conical light buoy, <i>Fl. Y. 4s</i> (Oct-Jun), without topmark	30° 39'.62 S	153° 08'.93 E
Amend	legend to (Oct-Jun)	31° 47'.1 S	152° 55'.8 E
	legend to (Oct-Jun)	31° 39'.8 S	152° 56'.8 E
	legend to (Oct-Jun)	31° 24'.7 S	153° 05'.3 E
	legend to (Oct-Jun)	30° 50'.7 S	153° 12'.4 E

Aus 812 [29/2014]

Insert	special conical light buoy, <i>Fl. Y. 4s</i> (Oct-Jun), without topmark	30° 39'.62 S	153° 08'.93 E
	out of position special conical light buoy, <i>Fl. Y. 4s</i> (Oct-Jun), without topmark	29° 32'.48 S	153° 26'.52 E
Amend	legend to (Oct-Jun)	30° 14'.9 S	153° 21'.9 E
	legend to (Oct-Jun)	29° 52'.8 S	153° 26'.4 E

Aus 813 [36/2014]

Insert	out of position special conical light buoy, <i>Fl. Y. 4s</i> (Oct-Jun), without topmark	29° 32'.48 S	153° 26'.52 E
	special conical light buoy, <i>Fl. Y. 4s</i> (Oct-Jun), without topmark	28° 36'.72 S	153° 42'.76 E
Substitute	special conical light buoy, <i>Fl. Y. 5s</i> , with topmark for light buoy	28° 35'.4 S	153° 38'.1 E
Amend	legend to (Oct-Jun)	29° 06'.0 S	153° 35'.5 E
	legend to (Oct-Jun)	28° 54'.6 S	153° 41'.8 E
	legend to (Oct-Jun)	28° 09'.8 S	153° 41'.5 E
Delete	depth, 58m	28° 36'.7 S	153° 42'.6 E
	light buoy	28° 35'.1 S	153° 38'.3 E

Aus 814 [768/2014]

Amend	legend to (Oct-Jun)	28° 09'.8 S	153° 40'.5 E
-------	---------------------	-------------	--------------

950* AUSTRALIA - QUEENSLAND - Fraser Seamount to Queensland Guyot - Depths

Australian Hydrographic Service DHDB 2601232

Aus 4635 (INT 635) [210/2014]

Insert	accompanying block A	25° 10' S	155° 26' E
	accompanying block B	27° 30' S	155° 27' E

Aus 4643 (INT 643) [613/2014]

Insert	accompanying block	28° 00' S	155° 20' E
--------	--------------------	-----------	------------

951* AUSTRALIA - QUEENSLAND - Great Barrier Reef - Girder Reef to Net Reef - Depths
 HMAS *Leeuwin* (DHDB 2718812)

Aus 821 [NE 18/7/2014]

Insert	depth, 19 ₈ m (a)	19° 39'.93 S	149° 48'.53 E
	depth, 18 ₈ m (b) and contour to enclose (a) and (b)	19° 39'.81 S	149° 48'.18 E
	depth, 24 ₈ m, enclosed by contour	19° 37'.83 S	149° 47'.08 E
	depth, 23 ₇ m, enclosed by contour	19° 36'.14 S	149° 47'.47 E

Substitute	depth, 17 ₈ m, enclosed by contour for depth, 33m	19° 38'.5 S	149° 47'.0 E
------------	--	-------------	--------------

Aus 825 [809/2014]

Insert	depth, 18 ₈ m, and extend contour S to enclose	19° 32'.63 S	149° 44'.66 E
	depth, 25 ₇ m, enclosed by contour	19° 31'.18 S	149° 40'.18 E
	depth, 18 ₇ m	19° 32'.91 S	149° 09'.80 E
	depth, 17 ₆ m, enclosed by contour	19° 33'.12 S	149° 09'.36 E

Delete	depth, 24 ₄ m	19° 32'.7 S	149° 09'.7 E
--------	--------------------------	-------------	--------------

952* AUSTRALIA - QUEENSLAND - Whitsundays - Stonehaven Anchorage - Light beacon
 HMAS *Leeuwin* (AA766868)

Aus 254 (plan, Stonehaven Anchorage) [1133/2013]

Amend	light beacon to <i>Fl.G.2-5s</i>	20° 05'.23 S	148° 53'.11 E
-------	----------------------------------	--------------	---------------

953* AUSTRALIA - NORTHERN TERRITORY - Bathurst Island - Point Fawsett - Depth
 HMAS *Leeuwin* (DHDB 2546127)

Aus 309 [848/2014]

Insert	depth, 28 ₇ m, enclosed by contour	11° 44'.96 S	129° 57'.34 E
--------	---	--------------	---------------

Aus 722 [848/2014]

Substitute	depth, 28 ₇ m, enclosed by contour for depth, 34m	11° 45'.0 S	129° 57'.3 E
------------	--	-------------	--------------

AX 00309T [848/2014]

Insert	depth, 28 ₇ m, enclosed by contour	11° 44'.96 S	129° 57'.34 E
--------	---	--------------	---------------

AX 00309U [848/2014]

Insert	depth, 28 ₇ m, enclosed by contour	11° 44'.96 S	129° 57'.34 E
--------	---	--------------	---------------

AX 00722T [848/2014]

Substitute	depth, 28 ₇ m, enclosed by contour for depth, 34m	11° 45'.0 S	129° 57'.3 E
------------	--	-------------	--------------

954* AUSTRALIA - NORTHERN TERRITORY - Cape Stewart - Wreck northwards
 Australian Hydrographic Service (AA766875)

Aus 717 [803/2013]

Substitute	safe clearance depth, 10m, enclosed by danger circle with legend, <i>Wk</i> (<i>PA</i>) for dangerous wreck	11° 20'.0 S	134° 38'.0 E
------------	--	-------------	--------------

955* AUSTRALIA - NORTHERN TERRITORY - Darwin - Elizabeth River - Light buoys
 Darwin Port Corporation (AA765890)

Aus 28 [813/2014]

Insert	special spar light buoy, <i>Fl.Y.2-5s</i> , without topmark	12° 31'.53 S	130° 55'.97 E
	special spar light buoy, <i>Fl.Y.2-5s</i> , without topmark	12° 31'.55 S	130° 55'.93 E
	special spar light buoy, <i>Fl.Y.2-5s</i> , without topmark	12° 31'.56 S	130° 55'.88 E
	special spar light buoy, <i>Fl.Y.2-5s</i> , without topmark	12° 31'.57 S	130° 55'.84 E

956* AUSTRALIA - WESTERN AUSTRALIA - Cape Preston - Light buoys*Former Notice - 1284(T)/2013 is cancelled*

Department of Transport WA (AA710742, AA768607)

Aus 68 [623/2014]

Insert	special cylindrical light buoy, Q, without topmark	20° 43'.91 S	116° 09'.85 E
	special cylindrical light buoy, Q, without topmark	20° 43'.75 S	116° 10'.13 E

Aus 742 [728/2014]

Insert	special cylindrical light buoy, Q, without topmark	20° 43'.75 S	116° 10'.13 E
	depth, 12 ₂ m	20° 44'.05 S	116° 09'.52 E

Delete	depth, 12 ₂ m	20° 43'.7 S	116° 10'.3 E
--------	--------------------------	-------------	--------------

957* AUSTRALIA - WESTERN AUSTRALIA - Port Walcott - Anchorages northwards

Pilbara Ports Authority (AA766748)

Aus 740 [1088/2013]

Insert	accompanying block	20° 15'.0 S	117° 07'.5 E
--------	--------------------	-------------	--------------

Aus 741 [903/2014]

Insert	accompanying block	20° 15'.0 S	117° 07'.5 E
--------	--------------------	-------------	--------------

958* AUSTRALIA - TASMANIA - Tamar River - Title amended

Australian Hydrographic Service (AA766284)

Aus 168 (inset, Tamar River to Launceston) [860/2014]

Insert	accompanying block	41° 26'.0 S	147° 05'.0 E
--------	--------------------	-------------	--------------

959(T)/2014 AUSTRALIA - NEW SOUTH WALES - Newcastle - Depth information

Former Notice - 909(T)/2014 is cancelled
Newcastle Port Corporation (AA768416)

Available depths as at 30 September 2014:

<i>Berth</i>	<i>Metres</i>	<i>Remarks</i>
Eastern Basin 1	11.4	
Eastern Basin 2 North of Ch 450	11.6	
Eastern Basin 2 South of Ch 450	11.5	
Western Basin 3	11.6	
Western Basin 4	11.6	
Channel Berth	9.7	
Dyke 1	12.8	
Dyke 2	12.8	
Dyke 4	16.4	
Dyke 5	16.4	
Dyke 6	5.3	
Mayfield 4 Ch 27 to 266	12.7	
BHP Wharf 6 to Ch 1050	7.6	
Kooragang 2	11.6	
Kooragang 2 North Dolphin Ch 182 to 243	11.6	
* Kooragang 2 South Dolphin Ch -92 to 00	11.4	
Kooragang 3 Ch -40 to 00	12.6	
Kooragang 3 Ch 00 to 220	13.2	
Kooragang 4	16.5	
Kooragang 5	16.5	
Kooragang 6	16.3	
Kooragang 7	16.3	
Kooragang 8	16.2	
Kooragang 9	16.3	
Kooragang 10	15.9	
Throsby 1 Ch 850 to 1030	8.9	
Carrington Wharf		To be sounded as and when required
Foreshore Park Berth	5.9	
Elgo Wharf		To be sounded as and when required
<i>Channels</i>		
Entrance Approach	17.7	
Entrance Channel (18.0m)	17.8	
Entrance Channel (17.4m)	17.4	
Entrance Channel (16.8m)	16.8	
Entrance Channel (16.2m)	16.2	
Entrance Channel to Horseshoe	15.2	
Horseshoe	15.2	
Steelworks Channel to Swinging Basin	15.2	
Swinging Basin	15.2	
Hunter River South Arm (Kooragang 6 to buoy 16)	15.2	
Hunter River South Arm (buoy 16 to buoy 20)	15.2	
Basin Cutting	12.6	
Basin Area to Eastern & Western Basin Berths	12.3	
* Basin Area to Throsby 1	9.2	
Stockton Crossing	3.6	
* Indicates new or revised entry.		

Chart temporarily affected - Aus 207 - Aus 208**960(T)/2014 AUSTRALIA - QUEENSLAND - Gladstone - Light beacon restored**

Former Notice - 224(T)/2014 is cancelled
Maritime Safety Queensland (AA767963)

Cancel this notice on receipt.

Chart formerly affected - Aus 246 - Aus 490 - Aus 819

961(T)/2014 AUSTRALIA - QUEENSLAND - Gladstone - Light buoy withdrawn

Former Notice - 271(T)/2014 is cancelled
Maritime Safety Queensland (AA769579)

Cancel this notice on receipt.

Chart formerly affected - Aus 244 - Aus 245

962(T)/2014 AUSTRALIA - QUEENSLAND - Gladstone - Scientific instrument recovered

Former Notice - 340(T)/2014 is cancelled
Maritime Safety Queensland (AA769579)

Cancel this notice on receipt.

Chart formerly affected - Aus 245

963(T)/2014 AUSTRALIA - QUEENSLAND - Gladstone - Wiggins Islands - Exclusion zone removed

Former Notice - 206(T)/2013 is cancelled
Maritime Safety Queensland (AA769579)

Cancel this notice on receipt.

Chart formerly affected - Aus 245

964(T)/2014 AUSTRALIA - QUEENSLAND - Gladstone - Calliope River - Light buoys withdrawn

Former Notice - 207(T)/2013 is cancelled
Maritime Safety Queensland (AA769579)

Cancel this notice on receipt.

Chart formerly affected - Aus 244 - Aus 245

965(T)/2014 AUSTRALIA - QUEENSLAND - Gladstone - Depth information
 Maritime Safety Queensland Notice 142(T)/2013 (AA653496)

Available depths as at 12 February 2013:

	<i>Metres</i>
<i>Sea Channels:</i>	
Wild Cattle Cutting	16.1
* Boyne Island Cutting	16.3
Boyne Island Extension Channel	9.0
Golding Cutting	16.1
* South Bypass Channel	7.4
Gatcombe Channel	16.3
* Gatcombe Bypass Channel	13.4
<i>Inner Channels:</i>	
Auckland Channel	15.8
Auckland Bypass Channel	6.8
Clinton Channel	16.0
Clinton Bypass Channel	10.6
Clinton Swing Basin	10.6
* Targinie Channel	10.5
Targinie Swing Basin East	10.6
* Targinie Swing Basin West	8.9
<i>Berths:</i>	
Boyne Smelter Wharf	15.0
* South Trees East Wharf	13.8
* South Trees West Wharf	13.0
Barney Point Wharf	(east approach) 13.5
Barney Point Wharf	(west approach) 11.5
Barney Point Wharf	15.0
* Auckland Point No 1 Wharf	10.6
* Auckland Point No 2 Wharf	10.6
* Auckland Point No 3 Wharf	11.4
* Auckland Point No 4 Wharf	11.3
* Clinton No 1 Wharf	19.2
* Clinton No 2 Wharf	18.4
* Clinton No 3 Wharf	18.6
* Clinton No 4 Wharf	19.1
* Fishermans Landing Wharf No 1	13.6
* Fishermans Landing Wharf No 2	13.3
* Fishermans Landing Wharf No 4	10.9
* Fishermans Landing Wharf No 5	10.9
* Indicates revised entry.	

Chart temporarily affected - Aus 244 - Aus 245 - Aus 246 - Aus 271 - Aus 272

966(T)/2014 AUSTRALIA - QUEENSLAND - Gladstone - Depth information
Former Notice - 204(T)/2013 is cancelled
 Maritime Safety Queensland Notice 142(T)/2013 (AA653496)

Cancel this notice on receipt.

Chart formerly affected - Aus 244 - Aus 245 - Aus 246

967(T)/2014 AUSTRALIA - QUEENSLAND - Hay Point - Exclusion zone; light buoys*Former Notice* - 1088(T)/2012 is cancelled

Maritime Safety Queensland Notice 575(T)/2014 (AA769395)

An exclusion zone exists in an area bounded as follows:

<i>Position</i>	<i>Remarks</i>
21° 15'.86 S 149° 18'.78 E	
21° 15'.88 S 149° 18'.83 E	
21° 16'.25 S 149° 19'.04 E	special light buoy, Fl.Y.4s
21° 16'.37 S 149° 18'.63 E	special light buoy, Q.Y
21° 16'.08 S 149° 18'.45 E	special light buoy, Q.Y
21° 16'.39 S 149° 17'.87 E	
21° 16'.24 S 149° 17'.54 E	
21° 15'.70 S 149° 18'.55 E	
21° 15'.53 S 149° 18'.47 E	
21° 15'.48 S 149° 18'.58 E.	

Chart temporarily affected - Aus 249 - Aus 250 - Aus 823 - AX 00249S - AX 00823S**968(T)/2014 AUSTRALIA - QUEENSLAND - Karumba - Depth information***Former Notice* - 583(T)/2014 is cancelled

Maritime Safety Queensland Notice 583(T)/2014 (AA769683)

Available depths as at 8 October 2014:

<i>Berth</i>	<i>Metres</i>
* Entrance Channel	3.4
Mobil/Trinity Wharf	6.3
Raptis Wharf	5.3
Ruby Marine Wharf	5.3
Gulf Freight Services Wharf	6.2
Karumba Cold Stores Wharf	6.2
Seaswift/Shell Wharf	6.2
Karumba Livestock Loading Wharf	5.4
Gulf Freight Services Ramp/Wharf	4.6
Pasminco Export Wharf	4.2
* Indicates revised entry.	

Chart temporarily affected - Aus 6**969(T)/2014 AUSTRALIA - QUEENSLAND - Moreton Bay - Manly - Light beacon restored***Former Notice* - 1265(T)/2012 is cancelled

Maritime Safety Queensland Notice 1301(T)/2012 (AA742757)

Cancel this notice on receipt.

Chart formerly affected - Aus 236**970(T)/2014 AUSTRALIA - QUEENSLAND - Moreton Bay - Fison Channel - Dredging operations completed***Former Notice* - 590(T)/2014 is cancelled

Maritime Safety Queensland Notice 304(T)/2014 (AA748456)

Cancel this notice on receipt.

Chart formerly affected - Aus 236**971(T)/2014 AUSTRALIA - QUEENSLAND - Pumicestone Channel - Light beacon relit***Former Notice* - 1059(T)/2013 is cancelled

Maritime Safety Queensland Notice 967/2013 (AA714014)

Cancel this notice on receipt.

Chart formerly affected - Aus 235 - Aus 236

972(T)/2014 AUSTRALIA - QUEENSLAND - Townsville - Dredging operations*Date* - Until 13 November 2014

Maritime Safety Queensland Notice 573(T)/2014 (AA769404)

The dredge *Brisbane* is conducting dredging operations in Sea Channel, Platypus Channel and Inner & Outer Harbour.

Mariners are advised to navigate with caution in the area.

Chart temporarily affected - Aus 256 - Aus 257 - Aus 827

973(T)/2014 AUSTRALIA - TORRES STRAIT - Darnley Island - Wreck

Maritime Safety Queensland Notice 571(T)/2014 (AA769330)

A stranded wreck exists in position 9° 35'.54 S 143° 47'.00 E.

Chart temporarily affected - Aus 376 - Aus 377 - Aus 840

974(T)/2014 AUSTRALIA - NORTHERN TERRITORY - Evans Shoal - Drill rig eastwardsMODU *Nan Hai 6* (AA769296)

Drill rig *Nan Hai 6* is conducting drilling operations in position 9° 47'.74 S 130° 13'.68 E.

Chart temporarily affected - Aus 310 - Aus 4721 (INT 721) - AX 00310U - AX 04721U

975(T)/2014 AUSTRALIA - NORTHERN TERRITORY - Quail Island - Military exercise completed*Former Notice* - 875(T)/2014 is cancelled

Department of Defence (AA768432)

Cancel this notice on receipt.

Chart formerly affected - Aus 29 - Aus 309 - Aus 316 - Aus 722 - AX 00309T - AX 00309U - AX 00722T

976(T)/2014 AUSTRALIA - NORTHERN TERRITORY - WESTERN AUSTRALIA - Darwin to Port Hedland - Survey operations

Date - Until 7 November 2014

EGS Survey Pty Ltd (AA753420, AA768764)

MV *Samson Explorer* is conducting survey operations between the following positions:

12° 15'.46 S 130° 35'.13 E
 11° 59'.73 S 129° 57'.29 E
 11° 18'.91 S 127° 24'.21 E
 11° 22'.49 S 127° 20'.64 E
 11° 21'.89 S 126° 37'.54 E
 13° 26'.04 S 124° 35'.54 E
 13° 37'.47 S 124° 08'.25 E
 13° 46'.90 S 123° 21'.11 E
 13° 45'.18 S 123° 15'.25 E
 13° 59'.73 S 123° 03'.27 E
 13° 53'.16 S 122° 19'.55 E
 13° 57'.87 S 122° 03'.27 E
 14° 08'.30 S 122° 01'.98 E
 14° 32'.87 S 121° 39'.27 E
 14° 53'.73 S 121° 24'.55 E
 14° 58'.16 S 121° 15'.26 E
 15° 02'.02 S 120° 34'.83 E
 16° 34'.74 S 118° 36'.11 E
 17° 09'.88 S 118° 05'.83 E
 17° 20'.60 S 118° 00'.97 E
 17° 38'.60 S 118° 00'.26 E
 17° 47'.74 S 118° 02'.83 E
 18° 28'.46 S 118° 32'.83 E
 19° 31'.40 S 118° 37'.53 E
 19° 33'.58 S 118° 35'.86 E
 19° 54'.29 S 118° 37'.07 E.

Chart temporarily affected - Aus 43 - Aus 52 - Aus 53 - Aus 309 - Aus 311 - Aus 312 - Aus 314 - Aus 315 - Aus 316 - Aus 319 - Aus 320 - Aus 322 - Aus 326 - Aus 722 - Aus 739 - Aus 740 - Aus 4721 (INT 721) - Aus 4722 (INT 722) - AX 00309T - AX 00309U - AX 00311U - AX 00312U - AX 00314U - AX 00315U - AX 00319U - AX 00322U - AX 00722T - AX 04721U - AX 04722U

977(T)/2014 AUSTRALIA - NORTHERN TERRITORY - WESTERN AUSTRALIA - Darwin to Port Hedland - Survey operations completed

Former Notice - 828(T)/2014 is cancelled

EGS Survey Pty Ltd (AA753420, AA768764)

Cancel this notice on receipt.

Chart formerly affected - Aus 24 - Aus 26 - Aus 29 - Aus 43 - Aus 52 - Aus 53 - Aus 309 - Aus 311 - Aus 312 - Aus 314 - Aus 315 - Aus 316 - Aus 319 - Aus 320 - Aus 322 - Aus 326 - Aus 722 - Aus 739 - Aus 740 - Aus 4721 (INT 721) - Aus 4722 (INT 722) - AX 00026T - AX 00309T - AX 00309U - AX 00311U - AX 00312U - AX 00314U - AX 00315U - AX 00319U - AX 00322U - AX 00722T - AX 04721U - AX 04722U

978(P)/2014 AUSTRALIA - WESTERN AUSTRALIA - Barrow Island - Nav aids

Former Notice - 388(T)/2014 is cancelled

Port of Barrow Island (AA766479)

Nav aids exist as follows:

<i>Name</i>	<i>Position</i>	<i>Characteristic</i>	<i>Remarks</i>
LNG 1	20° 49'.76 S 115° 32'.84 E	Q(2)G.6s	sarus tower
LNG 2	20° 50'.23 S 115° 32'.90 E	Q.R	sarus tower
LNG 3	20° 50'.22 S 115° 32'.44 E	LFI.G.6s	sarus tower
LNG 4	20° 50'.60 S 115° 31'.92 E	FI.R.3s	sarus tower
LNG 5	20° 50'.23 S 115° 32'.18 E	Q.G	sarus tower
LNG 6	20° 49'.70 S 115° 30'.65 E	FI.R.3s	sarus tower
LNG 7	20° 49'.58 S 115° 30'.73 E	FI.G.3s	sarus tower
LNG 8	20° 49'.37 S 115° 30'.10 E	FI.R.3s	sarus tower
LNG 9	20° 49'.17 S 115° 30'.04 E	FI.G.3s	sarus tower
LNG 10	20° 49'.30 S 115° 29'.76 E	FI.R.3s	sarus tower
LNG 11	20° 48'.94 S 115° 29'.76 E	FI.G.3s	sarus tower
LNG 12	20° 49'.29 S 115° 29'.34 E	FI.R.3s	sarus tower
LNG T1	20° 48'.72 S 115° 29'.72 E	FI.Y.3s	special spar light buoy
LNG T2	20° 49'.11 S 115° 29'.28 E	FI.Y.3s	special spar light buoy
LNG T3	20° 48'.71 S 115° 29'.34 E	FI.Y.3s	special spar light buoy
LNG T4	20° 48'.94 S 115° 29'.30 E	FI.Y.3s	special spar light buoy
LNG L1	20° 48'.77 S 115° 29'.24 E	F.Bu	front lead
LNG L2	20° 48'.51 S 115° 28'.80 E	F.Bu	rear lead

Chart which will be affected - Aus 62 - Aus 66

979(T)/2014 AUSTRALIA - WESTERN AUSTRALIA - Browse Island - Pipeline operations northwestwards

Date - Until 10 November 2014

McDermott Australia Pty Ltd (AA769611), Australian Maritime Safety Authority Auscoast Warning 217/2014 (AA769457)

MV *Deep Orient* will be conducting pipeline installation works in an area bounded by the following positions:

13° 44'.0 S 123° 05'.0 E
 14° 00'.0 S 123° 05'.0 E
 14° 00'.0 S 123° 20'.0 E
 13° 44'.0 S 123° 05'.0 E.

Mariners are advised to navigate with caution in the area.

Chart temporarily affected - Aus 319 - Aus 320 - Aus 322 - AX 00319U - AX 00322U

980(T)/2014 AUSTRALIA - WESTERN AUSTRALIA - Cape Preston - Scientific instruments

Department of Transport WA Notice 182/2014 (AA768911)

Special light buoys, FI.Y.5s, exist in the following positions:

20° 49'.23 S 116° 11'.38 E
 20° 49'.21 S 116° 11'.43 E
 20° 49'.18 S 116° 11'.76 E
 20° 49'.11 S 116° 12'.18 E.

Chart temporarily affected - Aus 68

981(T)/2014 AUSTRALIA - WESTERN AUSTRALIA - Dampier - Light buoys

Former Notice - 564(T)/2013 is cancelled

Date - Until 1 March 2015

Dampier Port Authority Notice 19/2013 (AA675281), Pilbara Ports Authority (AA767341)

Special light buoys, Q.Y, exist in the following positions:

20° 36'.99 S 116° 44'.90 E
 20° 37'.00 S 116° 44'.87 E
 20° 37'.00 S 116° 44'.84 E
 20° 36'.95 S 116° 44'.83 E.

Chart temporarily affected - Aus 59

982(T)/2014 AUSTRALIA - WESTERN AUSTRALIA - Glomar Shoal - Drill rig northwestwards moved

Former Notice - 881(T)/2014 is cancelled
 MODU *Nan Hai 6* (AA769296)

Cancel this notice on receipt.

Chart formerly affected - Aus 327 - Aus 741 - Aus 4722 (INT 722) - Aus 4723 (INT 723) - AX 04722U - AX 04723U

983(T)/2014 AUSTRALIA - WESTERN AUSTRALIA - Montebello Islands - Platform northwards

Former Notice - 798(T)/2014 is cancelled
Date - Until 15 March 2015
 Chevron Australia Pty Ltd (AA759520, AA768525)

Leg supports for the Wheatstone platform exist in the vicinity of position 19° 55'.76 S 115° 23'.04 E.

Each leg is marked by a light, *Fl.R.5s*. The southwest leg is also marked by a light, *Mo(U)15s*.

The platform superstructure will be installed in March 2015.

Chart temporarily affected - Aus 327 - Aus 328

984(T)/2014 AUSTRALIA - WESTERN AUSTRALIA - North West Cape - Seismic survey northwestwards

Date - Until 25 December 2014
 NT Shipping (AA768433, AA768434)

MV *Viking Vision*, with a 8500m towed array, is conducting a survey in the area bounded by the following positions:

21° 15'.94 S 111° 45'.95 E
 21° 16'.13 S 113° 06'.93 E
 18° 55'.50 S 112° 06'.56 E
 19° 43'.92 S 110° 36'.27 E.

Chart temporarily affected - Aus 329 - Aus 4723 (INT 723) - Aus 4725 (INT 725) - AX 04723U

985(T)/2014 AUSTRALIA - WESTERN AUSTRALIA - West Reef to Fly Island - Scientific instruments

Former Notice - 838(T)/2014 is cancelled
Date - Until 28 February 2016
 Department of Transport WA Notice 183/2014 (AA769313)

Scientific instruments marked by special spar light buoys, *Fl.Y.6s*, exist in the following positions:

21° 19'.66 S 115° 23'.45 E
 21° 19'.66 S 115° 09'.50 E
 21° 26'.31 S 114° 54'.14 E
 21° 27'.04 S 115° 02'.00 E
 21° 28'.93 S 115° 01'.54 E
 21° 30'.02 S 114° 50'.23 E
 21° 30'.16 S 114° 55'.44 E
 21° 31'.73 S 114° 46'.25 E
 21° 33'.30 S 115° 04'.14 E
 21° 33'.85 S 115° 00'.45 E
 21° 34'.15 S 115° 03'.42 E
 21° 34'.69 S 114° 54'.30 E
 21° 35'.20 S 114° 56'.38 E
 21° 36'.48 S 115° 04'.31 E
 21° 37'.84 S 114° 41'.51 E
 21° 43'.17 S 114° 46'.17 E.

Chart temporarily affected - Aus 64 - Aus 743 - Aus 744

986(T)/2014 AUSTRALIA - SOUTH AUSTRALIA - Boston Island - Unexploded ordnance disproved

Former Notice - 891(T)/2014 is cancelled
 Department of Planning, Transport and Infrastructure SA (AA768500)

Cancel this notice on receipt.

Chart formerly affected - Aus 134 - Aus 343 - Aus 776 - AX 00343S - AX 00776S

987(T)/2014 AUSTRALIA - VICTORIA - Port Phillip - Werribee South - Harbour works

Former Notice - 772(T)/2012 is cancelled

Date - Until 30 April 2016

Victorian Notice 160(T)/2014 (AA769322)

Harbour works associated with the construction of a new marina are in progress in an area bounded by the following:

<i>Position</i>	<i>Remarks</i>
37° 58'.29 S 144° 42'.27 E	special conical buoy, without topmark
37° 58'.31 S 144° 42'.36 E	special conical light buoy, <i>Fl. Y. 7s</i> , with topmark
37° 58'.32 S 144° 42'.46 E	special conical buoy, without topmark
37° 58'.28 S 144° 42'.55 E	special conical light buoy, <i>Fl. Y. 7s</i> , with topmark
37° 58'.23 S 144° 42'.63 E	special conical buoy, without topmark
37° 58'.17 S 144° 42'.69 E	special conical light buoy, <i>Fl. Y. 7s</i> , with topmark
37° 58'.10 S 144° 42'.75 E	special conical buoy, without topmark
37° 58'.04 S 144° 42'.81 E	special conical light buoy, <i>Fl. Y. 7s</i> , with topmark
37° 57'.97 S 144° 42'.86 E	special conical buoy, without topmark
37° 57'.89 S 144° 42'.85 E	special conical light buoy, <i>Fl. Y. 7s</i> , with topmark
37° 57'.81 S 144° 42'.82 E	special conical buoy, without topmark.

All hazards to navigation will display appropriate lights.

Mariners are advised to navigate with caution in the area.

Chart temporarily affected - Aus 143 - Aus 155

988(T)/2014 AUSTRALIA - VICTORIA - Port Phillip - Corio Bay - Dredging operations; nav aids

Former Notice - 763(T)/2014 is cancelled

Victorian Notices 131(T)/2014, 163(T)/2014 (AA757672, AA769326)

The dredge *Machiavelli* and support vessels will be conducting dredging operations in the vicinity of Corio Quay berth No4 (38° 06'.33 S 144° 22'.02 E) and in the vicinity of the corner of Hopetoun and City Channels (38° 07'.50 S 144° 22'.20 E).

All vessels will display appropriate lights and shapes.

The dredge will maintain a listening watch on VHF Ch 12.

The following light beacons have been removed and replaced by temporary light buoys. Light characteristics remain the same:

<i>Name</i>	<i>Removed beacon</i>	<i>Replacement buoy position</i>
No1	38° 07'.14 S 144° 22'.19 E	38° 07'.09 S 144° 22'.19 E
No3	38° 06'.77 S 144° 22'.24 E	38° 06'.82 S 144° 22'.23 E
No11	38° 07'.45 S 144° 22'.81 E	38° 07'.45 S 144° 22'.88 E
No13	38° 07'.34 S 144° 22'.36 E	38° 07'.36 S 144° 22'.42 E.

Mariners are advised to navigate with caution in the area.

Chart temporarily affected - Aus 153 - Aus 157

989(T)/2014 AUSTRALIA - VICTORIA - Port Phillip - Port Melbourne - Webb Dock - Harbour works; dredging operations; silt curtain; retaining wall; light repositioned

Former Notice - 942(T)/2014 is cancelled

Date - Until 30 November 2016

Victorian Notices 71(T)/2014, 84(T)/2014, 138(T)/2014, 159(T)/2014, 165(T)/2014 (AA733134, AA739510, AA760199, AA766333, AA769524)

Harbour works associated with the construction of a new international container terminal are in progress.

The berths 3E (37° 50'.60 S 144° 54'.45 E), 4E (37° 50'.73 S 144° 54'.54 E) and 5E (37° 50'.87 S 144° 54'.65 E) are temporarily unavailable for access.

The dredge *Machiavelli*, tugs *PT Mary* and *PT May* and support vessels are conducting dredging operations in the area. Vessels will monitor VHF Ch 12.

Two silt curtains, marked by lit flashing and unlit yellow buoys, exist between:

- 1- 37° 50'.44 S 144° 54'.23 E and 37° 50'.65 S 144° 54'.28 E
- 2- 37° 50'.35 S 144° 54'.30 E, 37° 50'.37 S 144° 54'.29 E and 37° 50'.38 S 144° 54'.25 E.

A retaining wall exists approximately 350m along the western shoreline from a position north of the Webb Dock West 2 pontoon and within the silt curtain.

The light (37° 50'.10 S 144° 54'.08 E) has been temporarily altered to *F.Bu. 11m 8M* and repositioned to 37° 50'.03 S 144° 54'.04 E.

Mariners are advised to navigate with caution in the area.

Chart temporarily affected - Aus 154

990(T)/2014 AUSTRALIA - TASMANIA - Bruny Island - Winnie Rocks - Scientific instrument recovered

Former Notice - 518(T)/2014 is cancelled

Marine and Safety Tasmania (AA767341)

Cancel this notice on receipt.

Chart formerly affected - Aus 173 - Aus 795 - Aus 796

991(T)/2014 AUSTRIA - TASMANIA - D'Entrecasteaux Channel - Perch Bay - Obstruction removed

Former Notice - 609(T)/2014 is cancelled
Marine and Safety Tasmania (AA767341)

Cancel this notice on receipt.

Chart formerly affected - Aus 173 - Aus 795

HYDROGRAPHIC REPORTS

<i>Locality</i>	<i>Report</i>	<i>Ship/Authority</i>	<i>Observer</i>
QLD- Stonehaven Anchorage	Light beacon	HMAS <i>Leeuwin</i>	

NAVIGATION WARNINGS

The following radio messages have been received during the period to 9 October 2014. Signal copies of these messages may be destroyed. It is recommended that the reprint of Navigational Warnings should be kept in a file or a book divided into areas. Cancellation should be made on receipt of signals and reprints.

Rigs on location other than those listed in the latest Section III summary are the subject of Radio Navigational Warnings. Rigs in transit will not be the subject of Warnings.

AUSCOAST WARNING

- 216 Cancelled.
 217 Special purpose vessel *Deep Orient* conducting underwater operations in an area bounded by 13° 44'.0 S to 14° 00'.0 S and 123° 05'.0 E to 123° 20'.0 E. 2.5M clearance requested.

NAVAREA X WARNINGS

- 058 Cancelled.
 059 Cancelled.
 060 Special purpose vessel *Go Phoenix* conducting underwater towing operations in an area bounded by 32° 48'.0 S 95° 33'.0 E, 32° 52'.0 S 95° 37'.0 E, 35° 07'.0 S 92° 55'.0 E and 35° 03'.0 S 92° 50'.0 E. 10M clearance requested.

Navigational warnings in force as at 090001UTC OCT 14.**Auscoast**

2014 140 191 197 199 206 211 212 214 215 217

Navarea X

2014 060

Summary of mobile drilling rigs as at 090001UTC OCT 14.

<i>Name</i>	<i>Position</i>
Transocean Legend	11° 00'.40 S 126° 41'.90 E
Jack Bates	10° 38'.61 S 126° 11'.02 E
Stena Clyde	12° 17'.50 S 124° 19'.80 E
Noble Clyde Boudreaux	13° 49'.00 S 123° 19'.35 E
Deepwater Millennium	16° 20'.80 S 119° 43'.70 E
Atwood Osprey	19° 48'.67 S 115° 17'.73 E
Atwood Eagle	19° 58'.22 S 115° 12'.76 E
Ocean America	20° 24'.49 S 114° 50'.95 E
Deepwater Frontier	19° 49'.81 S 114° 34'.13 E
Atwood Falcon	21° 20'.95 S 114° 04'.40 E

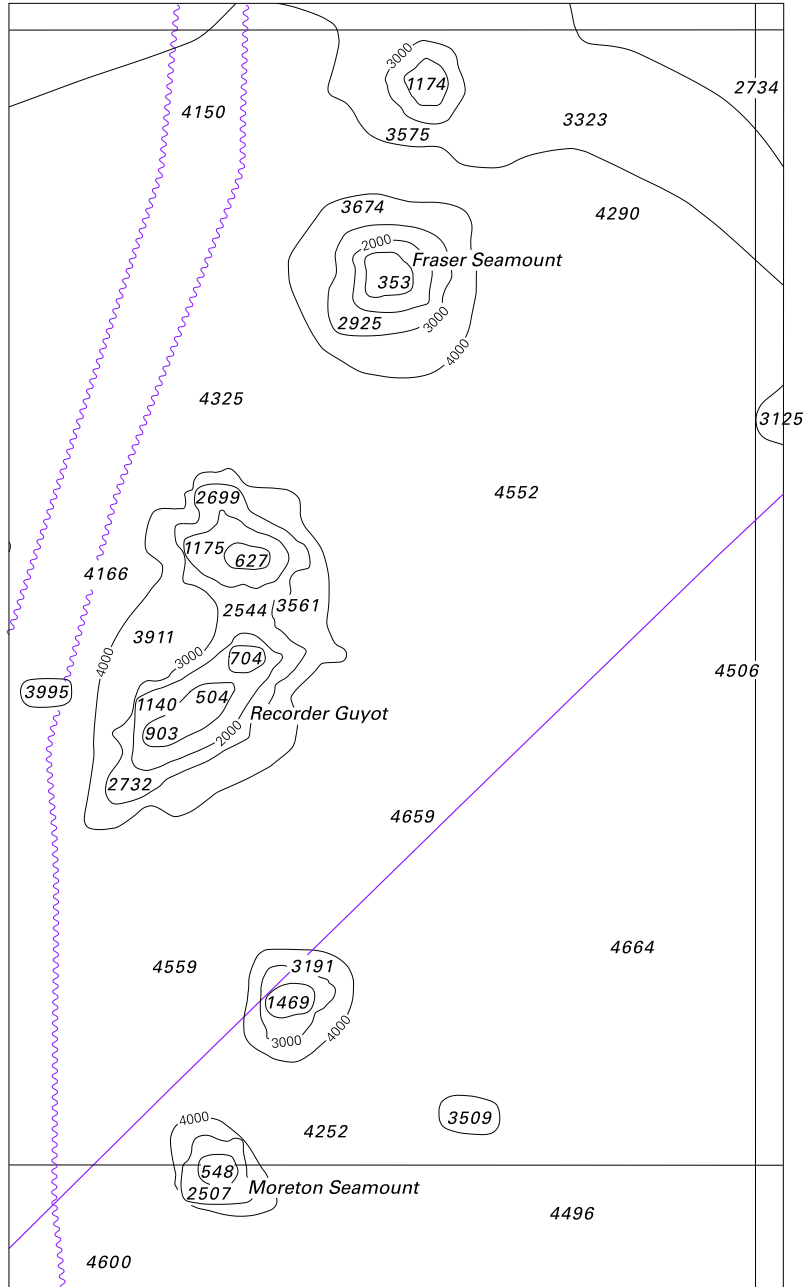
NAVAREA XIV WARNINGS

Nil.

Navarea XIV warnings in force as at 090001UTC OCT 14.

2014 Nil.

To accompany Australian Notice to Mariners 950/2014

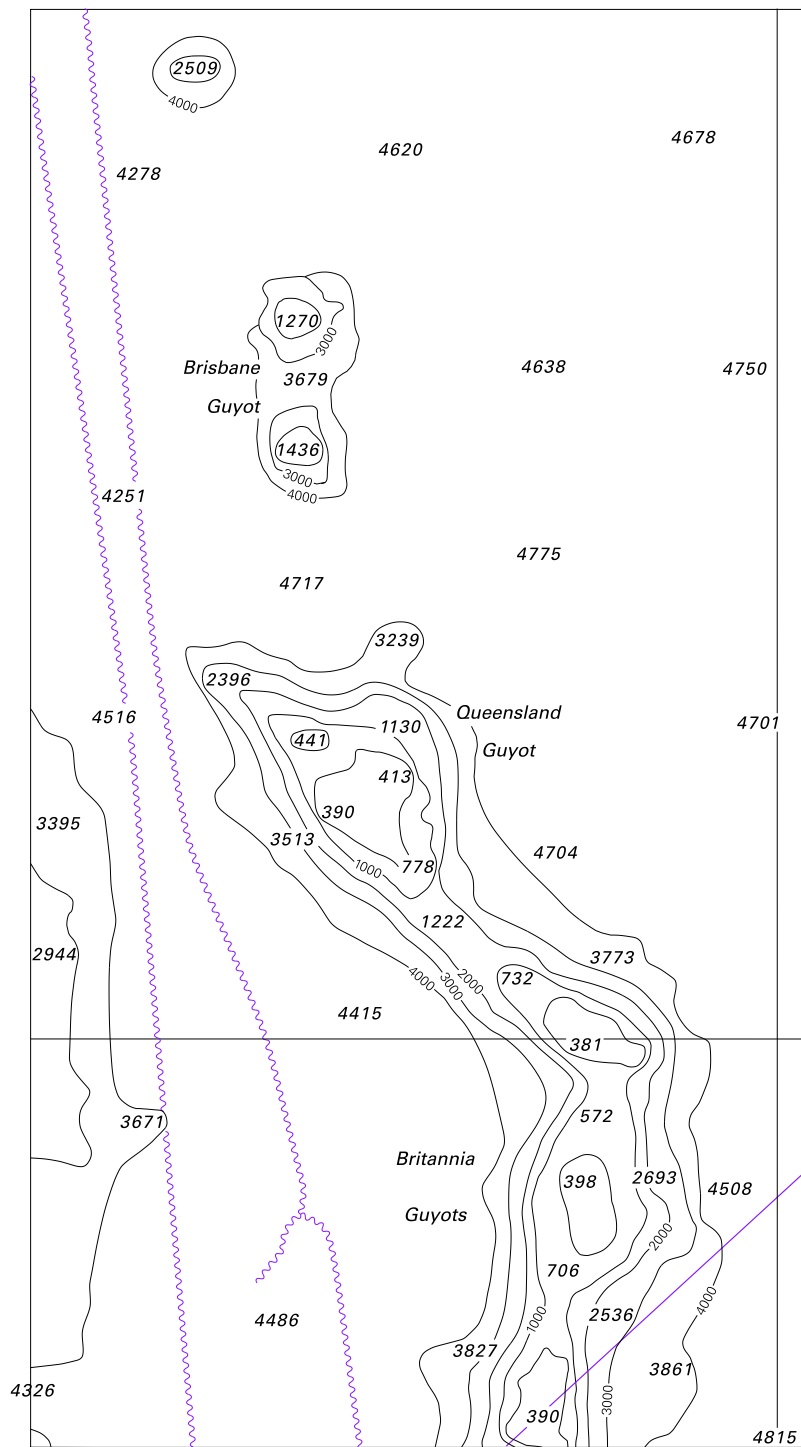


© Commonwealth of Australia 2014

Block A for chart Aus 4635

(102.5 x 170.1mm)

To accompany Australian Notice to Mariners 950/2014

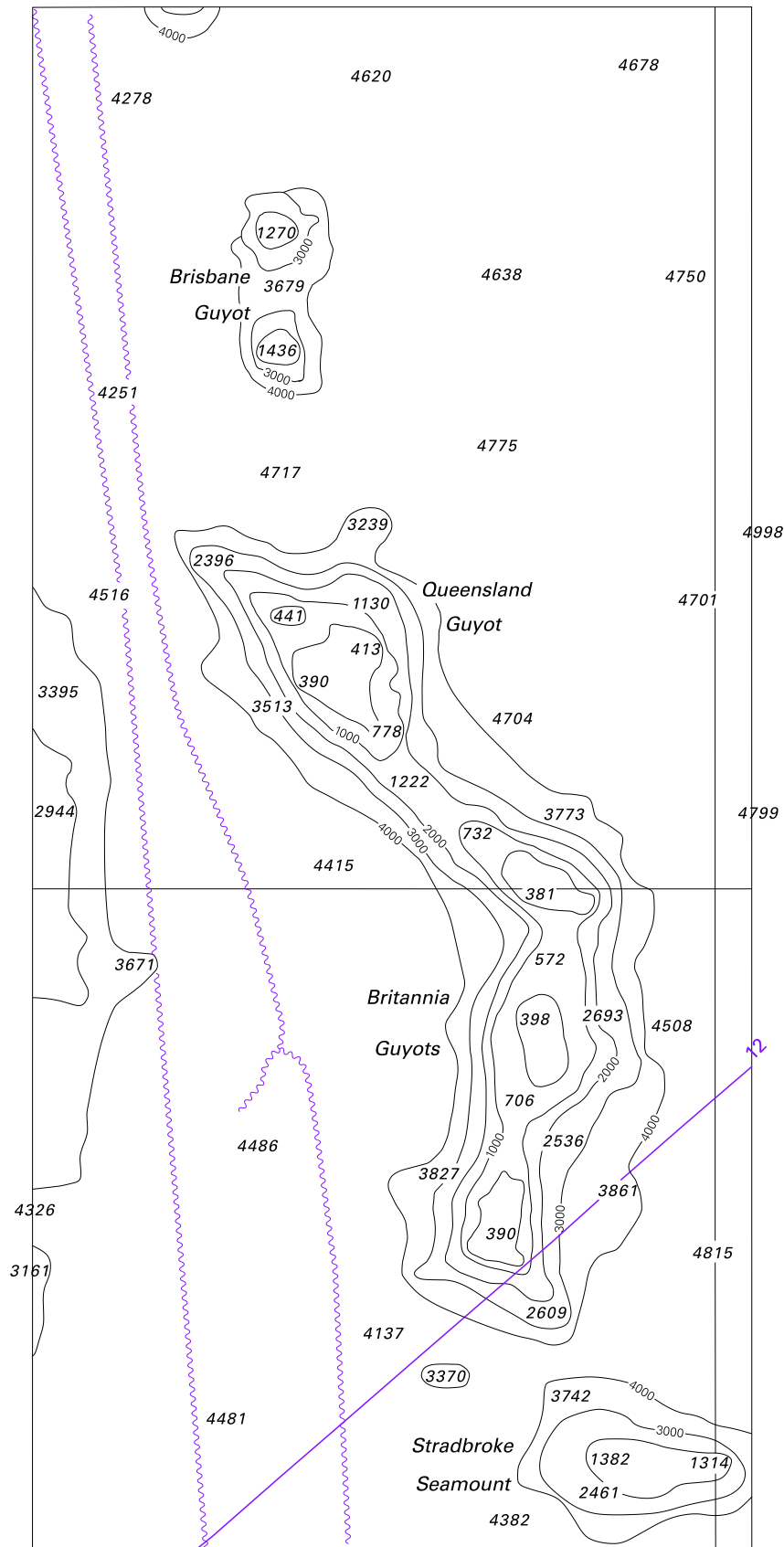


© Commonwealth of Australia 2014

Block B for chart Aus 4635

(102.5 x 190.2mm)

To accompany Australian Notice to Mariners 950/2014

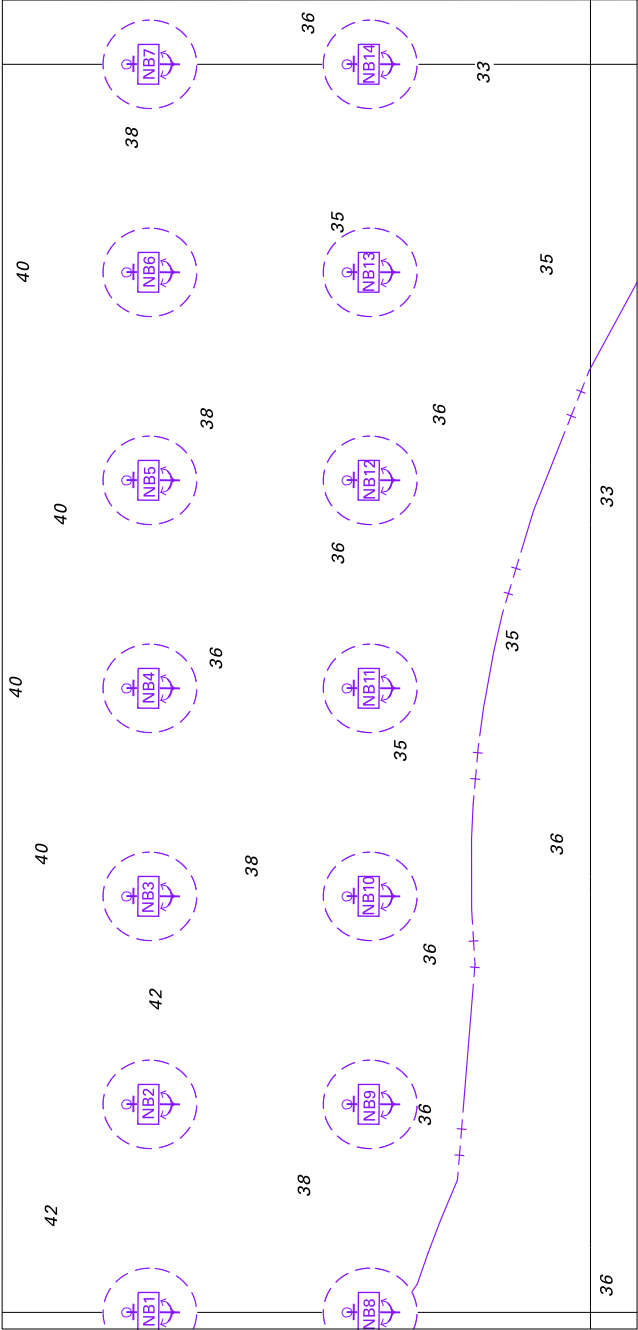


© Commonwealth of Australia 2014

Block for chart Aus 4643

(104.1 x 223.3mm)

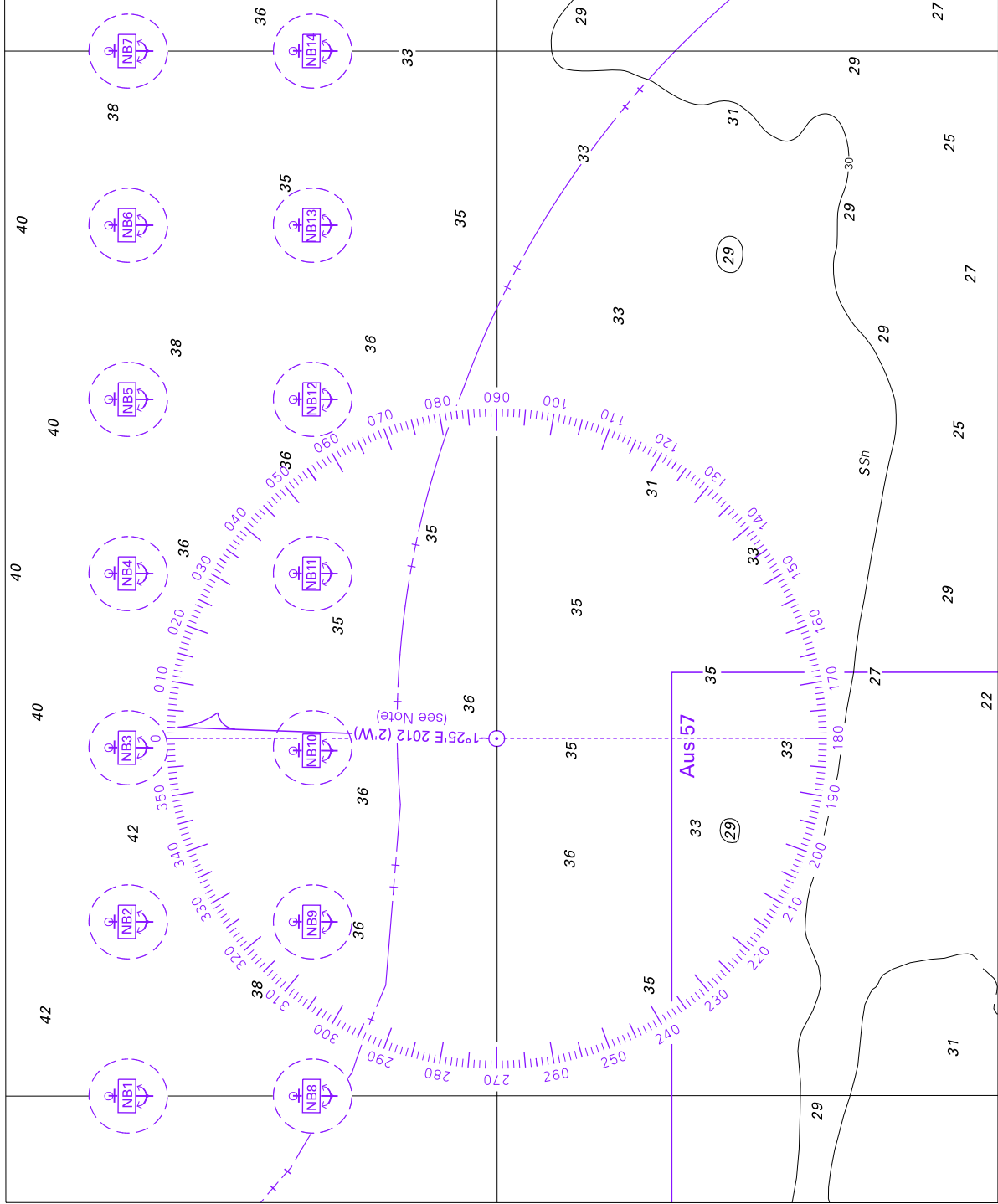
To accompany Australian Notice to Mariners 957/2014



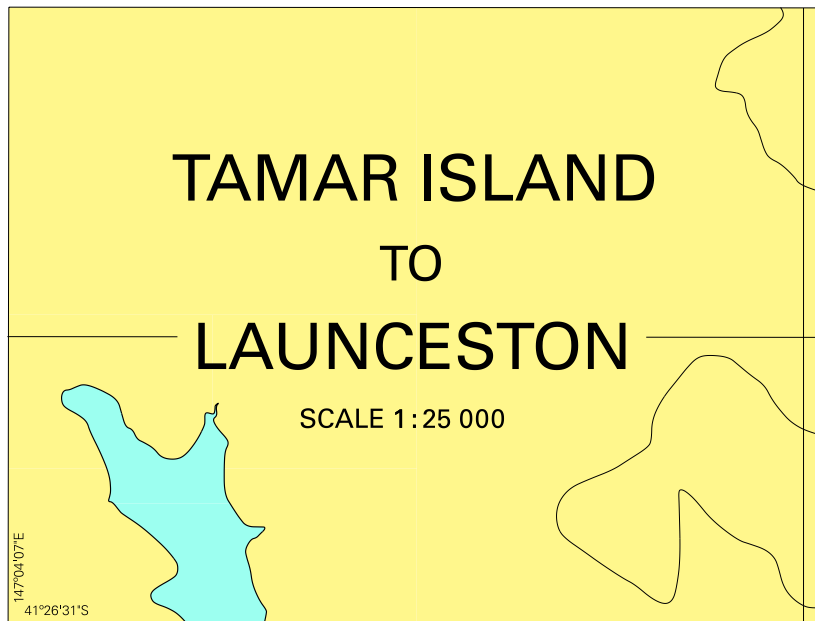
Block for chart Aus 740

© Commonwealth of Australia 2014

(175-8 x 83-9mm)



To accompany Australian Notice to Mariners 958/2014



Block for chart Aus 168

© Commonwealth of Australia 2014

(108.0 x 81.3mm)