



26 September 2014

Edition 19

Australian Notices to Mariners are the authority for correcting Australian Charts and Publications

AUSTRALIAN NOTICES TO MARINERS

Notices 895 - 945



Published fortnightly by the Australian Hydrographic Service

Commodore B.K. BRACE RAN
Hydrographer of Australia

SECTIONS.

- I. Australian Notices to Mariners, including blocks and notes.
- II. Hydrographic Reports.
- III. Navigational Warnings.

SUPPLEMENTS.

- I. Tracings
- II. Cumulative List of Australian Notices to Mariners.
- III. Cumulative List of Temporary and Preliminary Australian Notices to Mariners.
- IV. Temporary and Preliminary Notices in force.
- V. Amendments to Admiralty List of Lights and Fog Signals (Vol K), Radio Signals (NP 281(2), 282, 283(2), 285, 286(4)) and Sailing Directions (NP 9, 13, 14, 15, 33, 34, 35, 36, 39, 44, 51, 60, 61, 62, 100, 136).

© Commonwealth of Australia 2014

This work is copyright. Apart from any use permitted under the Copyright Act 1968, no part may be reproduced by any process, adapted, communicated or commercially exploited without prior written permission from The Commonwealth represented by the Australian Hydrographic Service.

IMPORTANT NOTICE

This edition of Notices to Mariners includes all significant information affecting AHS products which the AHS has become aware of since the last edition. All reasonable efforts have been made to ensure the accuracy and completeness of the information, including third party information, on which these updates are based. The AHS regards third parties from which it receives information as reliable, however the AHS cannot verify all such information and errors may therefore exist. The AHS does not accept liability for errors in third party information.

GENERAL INSTRUCTIONS

The substance of these notices should be inserted on the charts affected.

Bearings are referred to the true compass and are reckoned clockwise from North; those relating to lights are given as seen by an observer from seaward. Positions quoted in permanent notices relate to the horizontal datum for the chart(s). When preliminary or temporary notices affect multiple charts, positions will be provided in relation to only one horizontal datum and that datum will be specified. When the multiple charts do not have a common horizontal datum, mariners will be required to adjust the position(s) for those charts not on the specified datum. The range quoted for a light is its nominal range. Depths are with reference to the chart datum of each chart. Heights are above mean high water springs or mean higher high water, as appropriate.

The capital letter (P) or (T) after the number of any notice denotes a preliminary or temporary notice respectively, which are contained separately at the end of the permanent notices. A star (*) adjacent to the number of a notice indicates that the notice is based on original information.

REPORTING OF DANGERS

Mariners are particularly requested to notify the AUSTRALIAN HYDROGRAPHIC SERVICE, Locked Bag 8801 Wollongong, NSW 2500 (Fax 02-4223 6599, e-mail Hydro.NTM@defence.gov.au or, alternatively by filling in and submitting the [Hydrographic Notes](#) forms located on the web site – www.hydro.gov.au), immediately on the discovery of new dangers or suspected dangers to navigation. For changes or defects in aids to navigation notify AusSAR (Fax 02-6230 6868 or email rccaus@amsa.gov.au).

AUTHORISED USE

Copies of Australian notices are available free of charge from the Australian Hydrographic Service (AHS) website (www.hydro.gov.au) and through the eNotices (email) service (www.hydro.gov.au/enotices/enotices.htm).

Individual Notices may be copied for the purpose of inserting Notice substance on official charts and publications. Paper copies may be printed by chart agents and distributed to customers on a cost recovery basis. Participating chart agents are listed on the AHS website as providing a 'Paper Notices to Mariners' service (www.hydro.gov.au/prodserv/distributors/distributors.htm). Copies of the notices may not be sold for profit without prior written agreement.

NUMERICAL INDEX OF NOTICES TO MARINERS

Edition No 19

Notices	Aus Chart, INT Chart, ENC Cell, AHP, BA Pubs
895	Aus 299, 754, AX 00249S, 00260S, 00260T, 00820S, 00822S, 00823S, AXA 0830T
896	Amendment to Australian Notice to Mariners No 2
897	Summer time
898	Aus 194
899	Aus 490, 819
900	Aus 245, 272
901	Aus 832
902	Aus 4
903	Aus 327, 741, 4723, INT 723, AX 04723U
904	Aus 323, 4722, INT 722, AX 04722U
905	Aus 745
906	Aus 4070, 4071, INT 70, 71
907	Aus 137
908	Aus 139
909(T)	Aus 207, 208
910(T)	Aus 253, 268
911(T)	Aus 263, 264
912(T)	Aus 826, 827
913(T)	Aus 244, 245, 819
914(T)	Aus 268
915(T)	Aus 240
916(T)	Aus 241
917(T)	Aus 241, 817
918(T)	Aus 235, 236, 237, 238, 814, 815
919(T)	Aus 236
920(T)	Aus 815
921(T)	Aus 248, 260, 261, 367, 820, 822, AX 00260T, 00260S, 00261L, 00367S, 00822S
922(T)	Aus 260, 367, 822, AX 00260S, 00260T, 00367S, 00822S
923(T)	Aus 260, 261, 367, 822, AX 00260T, 00260S, 00367S, 00822S
924(T)	Aus 257
925(T)	Aus 257
926(T)	Aus 826
927(T)	Aus 28
928(T)	Aus 312, 4721, INT 721, AX 00312U, 04721U
929(T)	Aus 64, 328, 743, 744
930(T)	Aus 43, 314, 319, 320, 322, 729, 730, 4721, 4722, INT 721, 722, AX 00314U, 00319U, 00322U, 04721U, 04722U
931(T)	Aus 59
932(T)	Aus 327, 741
933(T)	Aus 52, 53
934(T)	Aus 328
935(T)	Aus 332, 333, 751, 752, 753
936(T)	Aus 326, 4722, 4723, INT 722, 723, AX 04722U, 04723U
937(T)	Aus 606, 4708, 4714, INT 708, 714, AX 04708U, 04714U
938(T)	Aus 485, 780
939(T)	Aus 137
940(T)	Aus 4727, INT 727
941(T)	Aus 144, 158
942(T)	Aus 154
943(T)	Aus 143, 157, 158
944(T)	Aus 150
945(T)	Aus 152

NUMERICAL INDEX OF CHARTS AFFECTED

Edition No 19

Aus Chart	Notices
Aus 4	902
Aus 28	927(T)
Aus 43	930(T)
Aus 52	933(T)
Aus 53	933(T)
Aus 59	931(T)
Aus 64	929(T)
Aus 137	907, 939(T)
Aus 139	908
Aus 143	943(T)
Aus 144	941(T)
Aus 150	944(T)
Aus 152	945(T)
Aus 154	942(T)
Aus 157	943(T)
Aus 158	941(T), 943(T)
Aus 194	898
Aus 207	909(T)
Aus 208	909(T)
Aus 235	918(T)
Aus 236	918(T), 919(T)
Aus 237	918(T)
Aus 238	918(T)
Aus 240	915(T)
Aus 241	916(T), 917(T)
Aus 244	913(T)
Aus 245	900, 913(T)
Aus 248	921(T)
Aus 253	910(T)
Aus 257	924(T), 925(T)
Aus 260	921(T), 922(T), 923(T)
Aus 261	921(T), 923(T)
Aus 263	911(T)
Aus 264	911(T)
Aus 268	910(T), 914(T)
Aus 272	900
Aus 299	895
Aus 312	928(T)
Aus 314	930(T)
Aus 319	930(T)
Aus 320	930(T)
Aus 322	930(T)
Aus 323	904
Aus 326	936(T)
Aus 327	903, 932(T)
Aus 328	929(T), 934(T)
Aus 332	935(T)
Aus 333	935(T)
Aus 367	921(T), 922(T), 923(T)
Aus 485	938(T)
Aus 490	899
Aus 606	937(T)
Aus 729	930(T)
Aus 730	930(T)

Aus Chart	Notices
Aus 741	903, 932(T)
Aus 743	929(T)
Aus 744	929(T)
Aus 745	905
Aus 751	935(T)
Aus 752	935(T)
Aus 753	935(T)
Aus 754	895
Aus 780	938(T)
Aus 814	918(T)
Aus 815	918(T), 920(T)
Aus 817	917(T)
Aus 819	899, 913(T)
Aus 820	921(T)
Aus 822	921(T), 922(T), 923(T)
Aus 826	912(T), 926(T)
Aus 827	912(T)
Aus 832	901
Aus 4070	906
Aus 4071	906
Aus 4708	937(T)
Aus 4714	937(T)
Aus 4721	928(T), 930(T)
Aus 4722	904, 930(T), 936(T)
Aus 4723	903, 936(T)
Aus 4727	940(T)
AX 00249S	895
AX 00260S	895, 921(T), 922(T), 923(T)
AX 00260T	895, 921(T), 922(T), 923(T)
AX 00261L	921(T)
AX 00312U	928(T)
AX 00314U	930(T)
AX 00319U	930(T)
AX 00322U	930(T)
AX 00367S	921(T), 922(T), 923(T)
AX 00820S	895
AX 00822S	895, 921(T), 922(T), 923(T)
AX 00823S	895
AX 04708U	937(T)
AX 04714U	937(T)
AX 04721U	928(T), 930(T)
AX 04722U	904, 930(T), 936(T)
AX 04723U	903, 936(T)
AXA 0830T	895

INT Chart	Notices
INT 70	906
INT 71	906
INT 708	937(T)
INT 714	937(T)
INT 721	928(T), 930(T)

INT Chart	Notices
INT 722	904 , 930(T) , 936(T)
INT 723	903 , 936(T)
INT 727	940(T)

895 AUSTRALIA - Products

Australian Hydrographic Service (AA766105, AA766264, AA767038)

New Edition

<i>Chart</i>	<i>Published</i>	<i>Title and description of amendments</i>	<i>Scale</i>	<i>Index Chart</i>	<i>Price</i>
Aus 299	26/9/2014	Australia - North Coast - Torres Strait - Approaches to Thursday Island 10° 32'·17 S – 10° 36'·60 S 142° 08'·69 E – 142° 15'·77 E <i>New edition with general updating throughout; including new two way route.</i>	1:12 500	Aus 5000	\$35.00

New Miscellaneous Edition

<i>Chart</i>	<i>Published</i>	<i>Title</i>	<i>Scale</i>	<i>Remarks</i>
AX00249S	26/9/2014	Approaches to Hay Point and Mackay	1:75 000	Fleet use only
AX00260S	26/9/2014	Broad Sound Channel and Shoalwater Bay	1:75 000	Fleet use only
AX00260T	26/9/2014	Broad Sound Channel and Shoalwater Bay	1:75 000	Fleet use only
AX00820S	26/9/2014	North Reef to Port Clinton	1:150 000	Fleet use only
AX00822S	26/9/2014	Port Clinton to Percy Isles	1:150 000	Fleet use only
AX00823S	26/9/2014	Percy Islands to Mackay	1:150 000	Fleet use only
AXA0830T	26/9/2014	Cooper Point to Mackay Reef	1:150 000	Fleet use only

New edition to be published shortly

<i>Chart</i>	<i>Title</i>	<i>Scale</i>	<i>Expected Publication Date</i>
Aus 754	Australia - West Coast - Western Australia - Lancelin to Cape Peron	1:150 000	10 October 2014

Chart permanently withdrawn

<i>Chart</i>	<i>On publication of new chart</i>
Aus 299	Aus 299
AX00249S	AX00249S
AX00260S	AX00260S
AX00260T	AX00260T
AX00820S	AX00820S
AX00822S	AX00822S
AX00823S	AX00823S
AXA0830T	AXA0830T

Australian National Tide Tables 2015

<i>AHP No</i>	<i>Title</i>	<i>Recommended retail price (incl GST)</i>	<i>Remarks</i>
AHP11	Australian National Tide Tables (ANTT) 2015	\$64.90	Paper Australian National Tide Tables 2015 for Australia, Antarctica, Papua New Guinea, Solomon Islands and East Timor. Provides tidal information for 2015. Available from accredited chart distribution agents.

For further details refer to the AHS website at www.hydro.gov.au for new edition and new chart stock arrival information.

When placing orders with a chart agent, mariners should advise whether their order pertains to the current edition or the new edition.

896 AUSTRALIA - Product - Amendment to Australian Notice to Mariners No 2

Australian Hydrographic Service (AA766970)

Page 11

Amend Tasmanian Map Centre details to read:

Tasmanian Map Centre
110 Elizabeth Street
Hobart 7000

Telephone	+61 (0)3 6231 9043	N, NtM
Fax	+61 (0)3 6231 9053	
Email	maptas@gmail.com	
Website	www.map-centre.com.au	

897 AUSTRALIA - Summer time

Australian Government (AA765732)

Clocks will be advanced one hour at 0200 local time on 5 OCT 2014 and retarded one hour on 5 APR 2015 in the Australian Capital Territory, New South Wales, South Australia, Victoria and Tasmania.

No changes will be made in Queensland, Northern Territory and Western Australia.

898* AUSTRALIA - NEW SOUTH WALES - Port Kembla - Light buoy

Port Authority of New South Wales (AA764010)

Aus 194 [947/2013]

Substitute special cylindrical light buoy, Q(2)Y.6s, without topmark for light buoy 34° 27'.16 S 150° 53'.70 E

899* AUSTRALIA - QUEENSLAND - Capricorn Group - Heron Island - Scientific instrument

Australian Institute of Marine Science (AA764060)

Aus 490 [808/2014]

Delete depth, 10m, and enclosing danger circle with legend, ODAS 23° 22'.8 S 151° 59'.2 E

Aus 819 [844/2014]

Delete depth, 10m, and enclosing danger circle with legend, ODAS 23° 22'.8 S 151° 59'.2 E

900* AUSTRALIA - QUEENSLAND - Gladstone - Fishermans Landing Wharves to Jacobs Channel - Mooring buoy; chart limits

Maritime Safety Queensland Notice 514/2014 (AA763538, AA764021), Australian Hydrographic Service (AA761389)

Aus 245 [844/2014]

Delete magenta limits with legend, Aus 244, centred on 23° 47'.2 S 151° 10'.7 E

Aus 272 [NC 29/8/2014]

Insert lit orange cylindrical mooring buoy, Fl.Y.2.5s 23° 46'.028 S 151° 11'.222 E

901* AUSTRALIA - QUEENSLAND - Great Barrier Reef - Ribbon Reef No 10 to Jewell Reef - Scientific instruments

Australian Institute of Marine Science (AA764060)

Aus 832 [NE 29/8/2014]

Delete depth, 250m, and enclosing danger circle with legend, ODAS 14° 20'.5 S 145° 20'.6 E
depth, 10m, and enclosing danger circle with legend, ODAS 14° 42'.1 S 145° 38'.5 E

902* AUSTRALIA - QUEENSLAND - Weipa - Lights

Maritime Safety Queensland Notice 525/2014 (AA763845)

Aus 4 (plan, Port of Weipa) [687/2013]

Amend light to F.Bu.23m (F Day) 12° 39'.81 S 141° 51'.03 E
light to F.Bu.26m (F Day) 12° 39'.74 S 141° 50'.90 E

903* AUSTRALIA - WESTERN AUSTRALIA - Dampier Archipelago - Scientific instruments northwestwards

Australian Institute of Marine Science (AA764060)

Aus 327 [623/2014]

Delete	depth, 20m, and enclosing danger circle with legend, ODAS	19° 26'.0 S	115° 55'.0 E
	depth, 20m, and enclosing danger circle with legend, ODAS	19° 41'.5 S	116° 06'.5 E
	depth, 20m, and enclosing danger circle with legend, ODAS	20° 03'.3 S	116° 25'.0 E

Aus 741 [527/2014]

Delete	depth, 20m, and enclosing danger circle with legend, ODAS	20° 03'.3 S	116° 25'.0 E
--------	---	-------------	--------------

Aus 4723 (INT 723) [42/2014]

Delete	depth, 20m, and enclosing danger circle with legend, ODAS	19° 26'.0 S	115° 55'.0 E
--------	---	-------------	--------------

AX 04723U [42/2014]

Delete	depth, 20m, and enclosing danger circle with legend, ODAS	19° 26'.0 S	115° 55'.0 E
--------	---	-------------	--------------

904* AUSTRALIA - WESTERN AUSTRALIA - Lynher Bank - Scientific instruments eastwards

Australian Institute of Marine Science (AA764060)

Aus 323 [252/2014]

Delete	depth, 20m, and enclosing danger circle with legend, ODAS	15° 32'.0 S	121° 14'.5 E
--------	---	-------------	--------------

Aus 4722 (INT 722) [366/2014]

Delete	depth, 20m, and enclosing danger circle with legend, ODAS	15° 32'.0 S	121° 14'.5 E
	depth, 20m, and enclosing danger circle with legend, ODAS	15° 13'.0 S	121° 07'.0 E

AX 04722U [366/2014]

Delete	depth, 20m, and enclosing danger circle with legend, ODAS	15° 32'.0 S	121° 14'.5 E
	depth, 20m, and enclosing danger circle with legend, ODAS	15° 13'.0 S	121° 07'.0 E

905* AUSTRALIA - WESTERN AUSTRALIA - Ningaloo Reef - Tantabiddi Passage - Scientific instrument

Australian Institute of Marine Science (AA764060)

Aus 745 [120/2014]

Delete	depth, 10m, and enclosing danger circle with legend, ODAS	21° 52'.0 S	113° 56'.8 E
--------	---	-------------	--------------

906 INDIAN OCEAN - Round Island - Depth

BA Notice 39/4113/2014 (AA765803)

Aus 4070 (INT 70) [685/2014]

Insert	depth, 379m, enclosed by contour	19° 40'.0 S	58° 22'.1 E
--------	----------------------------------	-------------	-------------

Delete	depth, 2734m	19° 35'.0 S	58° 20'.0 E
--------	--------------	-------------	-------------

Aus 4071 (INT 71) [685/2014]

Insert	depth, 379m, enclosed by contour	19° 40'.0 S	58° 22'.1 E
--------	----------------------------------	-------------	-------------

Delete	depth, 2734m	19° 35'.0 S	58° 20'.0 E
--------	--------------	-------------	-------------

907* AUSTRALIA - SOUTH AUSTRALIA - Port Adelaide - Berth*Former Notice - 466(T)/2014 is cancelled*

Department of Planning, Transport and Infrastructure SA Notice 32/2014 (AA764577)

Aus 137 [854/2013]

Insert	accompanying block	34° 46'.5 S	138° 29'.0 E
--------	--------------------	-------------	--------------

908* **AUSTRALIA - SOUTH AUSTRALIA - Port Giles - Depth**
 HydroSurvey Australia (DHDB 2722683)

Aus 139 (plan, Port Giles) [389/2013]

Insert	depth, 10_4m	35° 01'.449 S	137° 46'.034 E
--------	----------------	---------------	----------------

Delete	depth, 10m, and enclosing contour	35° 01'.45 S	137° 46'.04 E
--------	-----------------------------------	--------------	---------------

909(T)/2014 AUSTRALIA - NEW SOUTH WALES - Newcastle - Depth information*Former Notice - 862(T)/2014 is cancelled*

Newcastle Port Corporation (AA766501)

Available depths as at 19 September 2014:

<i>Berth</i>	<i>Metres</i>	<i>Remarks</i>
Eastern Basin 1	11.4	
Eastern Basin 2 North of Ch 450	11.6	
Eastern Basin 2 South of Ch 450	11.5	
Western Basin 3	11.6	
Western Basin 4	11.6	
Channel Berth	9.7	
Dyke 1	12.8	
Dyke 2	12.8	
Dyke 4	16.4	
Dyke 5	16.4	
Dyke 6	5.3	
Mayfield 4 Ch 27 to 266	12.7	
BHP Wharf 6 to Ch 1050	7.6	
Kooragang 2	11.6	
Kooragang 2 North Dolphin Ch 182 to 243	11.6	
Kooragang 2 South Dolphin Ch -92 to 00	11.5	
Kooragang 3 Ch -40 to 00	12.6	
Kooragang 3 Ch 00 to 220	13.2	
Kooragang 4	16.5	
Kooragang 5	16.5	
Kooragang 6	16.3	
Kooragang 7	16.3	
Kooragang 8	16.2	
Kooragang 9	16.3	
Kooragang 10	15.9	
Throsby 1 Ch 850 to 1030	8.9	
Carrington Wharf		To be sounded as and when required
Foreshore Park Berth	5.9	
Elgo Wharf		To be sounded as and when required
<i>Channels</i>		
Entrance Approach	17.7	
Entrance Channel (18.0m)	17.8	
Entrance Channel (17.4m)	17.4	
Entrance Channel (16.8m)	16.8	
Entrance Channel (16.2m)	16.2	
Entrance Channel to Horseshoe	15.2	
* Horseshoe	15.2	
Steelworks Channel to Swinging Basin	15.2	
Swinging Basin	15.2	
* Hunter River South Arm (Kooragang 6 to buoy 16)	15.2	
* Hunter River South Arm (buoy 16 to buoy 20)	15.2	
Basin Cutting	12.6	
Basin Area to Eastern & Western Basin Berths	12.3	
Basin Area to 1 Throsby	9.4	
Stockton Crossing	3.6	
* Indicates new or revised entry.		

Chart temporarily affected - Aus 207 - Aus 208**910(T)/2014 AUSTRALIA - QUEENSLAND - Abel Point - Dredging operations completed***Former Notice - 631(T)/2014 is cancelled*

Maritime Safety Queensland Notice 515(T)/2014 (AA763844)

Cancel this notice on receipt.

Chart formerly affected - Aus 253 - Aus 268

911(T)/2014 AUSTRALIA - QUEENSLAND - Cairns - Senrab Point - Pile driving completed*Former Notice* - 412(T)/2014 is cancelled

Maritime Safety Queensland Notice 376(T)/2014 (AA753952)

Cancel this notice on receipt.

Chart formerly affected - Aus 263 - Aus 264**912(T)/2014 AUSTRALIA - QUEENSLAND - Cape Bowling Green - Light buoy off station eastwards***Former Notice* - 866(T)/2014 is cancelled

Australian Institute of Marine Science (AA764057, AA766111)

The isolated danger light buoy, *Fl(2)5s* (19° 18'.12 S 147° 37'.05 E), is off station; a special pillar light buoy, *Fl(2)5s*, exists in situ.**Chart temporarily affected - Aus 826 - Aus 827****913(T)/2014 AUSTRALIA - QUEENSLAND - Gladstone - Harbour works completed***Former Notice* - 130(T)/2014 is cancelled

Maritime Safety Queensland (AA767161)

Cancel this notice on receipt.

Chart formerly affected - Aus 244 - Aus 245 - Aus 819**914(T)/2014 AUSTRALIA - QUEENSLAND - Gloucester Passage - Light beacon restored***Former Notice* - 736(T)/2014 is cancelled

Maritime Safety Queensland Notice 533/2014 (AA764264)

Cancel this notice on receipt.

Chart formerly affected - Aus 268**915(T)/2014 AUSTRALIA - QUEENSLAND - Great Sandy Strait - Tin Can Inlet - Snapper Creek - Wreck salvaged***Former Notice* - 1156(T)/2013 is cancelled

Maritime Safety Queensland (AA767151)

Cancel this notice on receipt.

Chart formerly affected - Aus 240**916(T)/2014 AUSTRALIA - QUEENSLAND - Great Sandy Strait - Tin Can Inlet - Wreck salvaged***Former Notice* - 1217(T)/2013 is cancelled

Maritime Safety Queensland (AA767151)

Cancel this notice on receipt.

Chart formerly affected - Aus 241**917(T)/2014 AUSTRALIA - QUEENSLAND - Hervey Bay - Big Woody Island - Light beacon restored***Former Notice* - 203(T)/2013 is cancelled

Maritime Safety Queensland (AA767151)

Cancel this notice on receipt.

Chart formerly affected - Aus 241 - Aus 817

918(T)/2014 AUSTRALIA - QUEENSLAND - Moreton Bay - Brisbane River - Depth information

Former Notice - 871(T)/2014 is cancelled
Brisbane Port Corporation (AA766425)

Available depths and under keel clearances (UKC) at 19 September 2014:

<i>Berth</i>	<i>Metres</i>	<i>Remarks</i>
Fisherman Islands No12	14.2	
Fisherman Islands No11	14.0	
Fisherman Islands No10	14.0	
Fisherman Islands No9	14.2	
Fisherman Islands No8	14.0	
Fisherman Islands No7	14.0	
Fisherman Islands No6	14.1	
* Fisherman Islands No5	13.9	
Fisherman Islands No4	14.0	
Fisherman Islands No3	14.1	
Fisherman Islands No2	14.2	
Fisherman Islands No1	14.0	
Fisherman Islands Grain and Woodchip	13.0	
* Caltex Fisherman Islands	14.6	
Fisherman Islands Coal	14.3	
Fisherman Islands General Purpose	11.5	
* Luggage Point Pump Out Facility	13.4	
* BP Luggage Point	14.0	
Caltex Products	10.1	
* Cement Australia Co Wharf	9.5	
* BP Products	10.7	
* Viva Energy	10.8	
Graincorp Liquid Terminal	10.3	
Incitec North	10.2	
Incitec South	10.5	
Pinkenba 1	10.4	
Pinkenba 2	10.4	
Riverside Marina	-	
* Sugar Terminal	9.8	
Cairncross Fitting Out Wharf	7.1	
Cairncross Breasting Wharf	4.4	
Brisbane Naval Wharf	4.3	
* Maritime No1	8.5	
* Hamilton No4	10.0	
Hamilton No1	8.9	
Brisbane Cruise Ship Terminal	8.9	
	<i>Metres</i>	<i>UKC/Remarks</i>
<i>Moreton Bay:</i>		
North West Channel	15.0	2.3 (280m width)
North West Bypass Channel	9.2	1.6
Spitfire Channel	15.0	1.5 (600m width)
East Knoll Bypass Channel	6.0	1.4
East Channel	15.0	1.5 (300m width from western side)
Main Channel (M8 - M9)	10.0	1.8
Entrance Channel (E5 - EBCN)	14.7	1.5
<i>Brisbane River:</i>		
Outer Bar Cutting	14.0	1.46
Inner Bar Cutting	14.0	1.46
Fisherman Islands Swing Basin	14.0	1.3
Fisherman Islands Swing Basin (11.5)	11.3	0.6
River	9.1	0.6 / 0.9 (draft/tide)
Cement Australia Swing Basin	9.1	0.6 / 0.9 (draft/tide)
Pinkenba Swing Basin	9.1	0.6 / 0.9 (draft/tide)
* Hamilton Swing Basin	9.0	0.6 / 0.9 (draft/tide)
* Indicates new or revised entry.		

Chart temporarily affected - Aus 235 - Aus 236 - Aus 237 - Aus 238 - Aus 814 - Aus 815

919(T)/2014 AUSTRALIA - QUEENSLAND - Moreton Bay - Scientific instrument*Date* - Until 15 January 2015

Maritime Safety Queensland Notice 554(T)/2014 (AA766827)

A special spherical light buoy, *Fl(5)Y.20s*, exists in position 27° 15'.0 S 153° 12'.0 E.**Chart temporarily affected - Aus 236****920(T)/2014 AUSTRALIA - QUEENSLAND - Point Arkwright to Noosa Head - Research operations***Date* - Until 31 October 2014

Maritime Safety Queensland Notice 544(T)/2014 (AA766756)

MV *Duke* and support vessels are conducting research operations in an area bounded by the following positions:

26° 33'.31 S 153° 15'.90 E

26° 23'.41 S 153° 17'.49 E

26° 22'.72 S 153° 12'.12 E

26° 32'.62 S 153° 10'.52 E.

Special light buoys, *Fl.Y.3s*, exist in the following positions:

26° 29'.22 S 153° 06'.78 E

26° 29'.65 S 153° 06'.68 E

26° 30'.07 S 153° 06'.63 E

26° 29'.78 S 153° 07'.07 E

26° 29'.78 S 153° 07'.53 E.

Mariners are advised to navigate with caution in the area.

Chart temporarily affected - Aus 815**921(T)/2014 AUSTRALIA - QUEENSLAND - Shoalwater Bay - Live firing***Date* - Until 19 November 2014

Maritime Safety Queensland Notice 528(T)/2014 (AA764435)

Live firing activities will be conducted in the Shoalwater Bay training area during the period 1 October to 18 November 2014.

A marine danger area extends to all internal waters bounded by the following positions:

22° 35'.87 S 150° 28'.80 E

22° 24'.75 S 150° 17'.35 E

22° 27'.02 S 150° 34'.98 E

22° 33'.13 S 150° 42'.40 E

22° 40'.00 S 150° 38'.00 E.

All waters, creeks, beaches and other areas within the declared marine danger area are not available for access.

There will be a safe anchorage available at Freshwater, Port Clinton, Pearl Bay, Island Head Creek on the East Coast, Supply Bay on Townshend Island and West Water of Port Clinton.

Mariners are advised to keep clear of this area throughout the above times.

Chart temporarily affected - Aus 248 - Aus 260 - Aus 261 - Aus 367 - Aus 820 - Aus 822 - AX 00260T - AX 00260S - AX 00261L - AX 00367S - AX 00822S**922(T)/2014 AUSTRALIA - QUEENSLAND - Shoalwater Bay - Triangular Islands - Military exercise completed***Former Notice* - 741(T)/2014 is cancelled

Maritime Safety Queensland Notice 452(T)/2014 (AA757848)

Cancel this notice on receipt.

Chart formerly affected - Aus 260 - Aus 367 - Aus 822 - AX 00260S - AX 00260T - AX 00367S - AX 00822S

923(T)/2014 AUSTRALIA - QUEENSLAND - Shoalwater Bay - Live firing*Date* - Until 4 October 2014

Maritime Safety Queensland Notice 558(T)/2014 (AA767050)

Live firing activities will be conducted in the Shoalwater Bay training area during the period 30 September to 3 October 2014.

A marine danger area extends to all internal waters bounded by the following positions:

22° 12'.20 S 150° 22'.50 E
 22° 09'.00 S 150° 25'.00 E
 22° 09'.00 S 150° 37'.00 E
 22° 14'.30 S 150° 37'.00 E
 22° 10'.02 S 150° 30'.06 E.

All waters, creeks, beaches and other areas within the declared marine danger area are not available for access.

There will be a safe anchorage available at Freshwater, Port Clinton, Pearl Bay, Island Head Creek on the East Coast and West Water of Port Clinton.

Mariners are advised to keep clear of this area throughout the above times.

Chart temporarily affected - Aus 260 - Aus 261 - Aus 367 - Aus 822 - AX 00260T - AX 00260S - AX 00367S - AX 00822S

924(T)/2014 AUSTRALIA - QUEENSLAND - Townsville - Ross River - Harbour works; dredging operations*Former Notice* - 742(T)/2014 is cancelled*Date* - Until 10 December 2014

Maritime Safety Queensland Notices 422(T)/2014, 447(T)/2014, 449(T)/2014, 547(T)/2014 (AA756977, AA757509, AA757550, AA766705)

Harbour works associated with the construction of boat ramps and pontoons are in progress in the vicinity of position 19° 16'.48 S 146° 49'.86 E.

A silt curtain marked by lights, *Fl. Y. 4s*, exists around the works.

The dredge *Everglade* is conducting dredging operations in the area between positions 19° 16'.15 S 146° 50'.14 E and 19° 16'.95 S 146° 49'.53 E.

Anchoring and mooring is prohibited in this area.

A combination of floating, partially submerged and submerged pipeline exist in the area. The submerged pipeline is marked by special light buoys, *Fl. Y. 2.5s*, established either side of the channel crossings indicating the safe channel.. The partially submerged pipeline is marked by special light buoys, *Fl. Y. 2.4s*. The floating pipeline is marked by special lights, *Fl. Y. 4s*.

The dredge will display appropriate lights and shapes.

Vessels will monitor VHF Ch 12 and Ch 16..

Mariners are advised to navigate with caution in the area.

Chart temporarily affected - Aus 257

925(T)/2014 AUSTRALIA - QUEENSLAND - Townsville - Wreck; light buoy

Maritime Safety Queensland Notice 555(T)/2014 (AA766840)

A dangerous wreck marked by a special light buoy, *Fl. Y. 2.5s*, exists in position 19° 14'.67 S 146° 49'.60 E.

Mariners are advised to navigate with caution in the area.

Chart temporarily affected - Aus 257

926(T)/2014 AUSTRALIA - QUEENSLAND - Upstart Bay - Light buoy re-established

Former Notice - 401(T)/2013 is cancelled

Maritime Safety Queensland Notice 533/2014 (AA764264)

Cancel this notice on receipt.

Chart formerly affected - Aus 826

927(T)/2014 AUSTRALIA - NORTHERN TERRITORY - Darwin - East Arm - Light buoys

Darwin Port Corporation Notice 129(T)/2014 (AA766141)

Light buoys exist as follows:

<i>Number</i>	<i>Position</i>	<i>Characteristic</i>
BT01	12° 30'.00 S 130° 52'.82 E	Fl(2)G.5s
BT02	12° 30'.25 S 130° 53'.71 E	Fl(2)R.5s
BT03	12° 30'.58 S 130° 54'.02 E	Fl(2)G.5s

Chart temporarily affected - Aus 28

928(T)/2014 AUSTRALIA - TIMOR SEA - Sahul Banks - Drill rig

Date - Until 22 December 2014

MODU *Jack Bates* (AA767001, AA767054)

Drill rig *Jack Bates* is conducting drilling operations in position 10° 38'.62 S 126° 11'.02 E.

Chart temporarily affected - Aus 312 - Aus 4721 (INT 721) - AX 00312U - AX 04721U

929(T)/2014 AUSTRALIA - WESTERN AUSTRALIA - Ashburton Road - Pipeline operations

Former Notice - 458(T)/2014 is cancelled

Date - Until 28 February 2015

Chevron Australia Pty Ltd (AA767103)

RLV *La Boudeuse* and support vessels *Samson*, *Liz F* and *Alert* are conducting rock laying operations between the following positions:

21° 24'.00 S 114° 49'.00 E
 21° 35'.15 S 114° 57'.38 E
 21° 38'.31 S 114° 59'.25 E
 21° 40'.66 S 114° 59'.57 E.

Mariners are advised to navigate with caution in the area.

Chart temporarily affected - Aus 64 - Aus 328 - Aus 743 - Aus 744

930(T)/2014 AUSTRALIA - WESTERN AUSTRALIA - Browse Island - Survey operations

Date - Until 7 November 2014

Geoscience Australia (AA767002)

RV *Tangaroa* is conducting survey operations in an area bounded by the following positions:

15° 00'.0 S 121° 26'.0 E
 15° 00'.0 S 124° 00'.0 E
 12° 43'.0 S 124° 55'.0 E
 12° 33'.0 S 124° 00'.0 E
 12° 56'.0 S 122° 55'.0 E.

Chart temporarily affected - Aus 43 - Aus 314 - Aus 319 - Aus 320 - Aus 322 - Aus 729 - Aus 730 - Aus 4721 (INT 721) - Aus 4722 (INT 722) - AX 00314U - AX 00319U - AX 00322U - AX 04721U - AX 04722U

931(T)/2014 AUSTRALIA - WESTERN AUSTRALIA - Dampier - Harbour works

Dampier Port Authority Notice 33/2014 (AA766951)

Harbour works are in progress in an area marked by four special light buoys, *Fl.Y.2s*, bounded by the following positions:

20° 36'.76 S 116° 44'.87 E

20° 36'.76 S 116° 45'.00 E

20° 36'.63 S 116° 45'.00 E

20° 36'.63 S 116° 44'.87 E.

An exclusion zone exists in the area.

The dolphin and light, *Fl.R.3s* (20° 36'.73 S 116° 44'.93 E), have been removed.

Barge *Swanfleet* is on site and has deployed 4 anchors.

Special light buoys, *Fl.Y.2s*, exist in positions 20° 36'.68 S 116° 45'.07 E and 20° 36'.75 S 116° 45'.05 E.

Mariners are advised to navigate with caution in the area.

Chart temporarily affected - Aus 59

932(T)/2014 AUSTRALIA - WESTERN AUSTRALIA - Glomar Shoal - Mooring buoys northwestwards withdrawn

Former Notice - 882(T)/2014 is cancelled

Viking Seatech (AA766100)

Cancel this notice on receipt.

Chart formerly affected - Aus 327 - Aus 741

933(T)/2014 AUSTRALIA - WESTERN AUSTRALIA - Manilya Sandbank - Scientific instrument

Former Notice - 355(T)/2014 is cancelled

Date - Until 30 June 2015

Port Hedland Port Authority Notice 32(T)/2014 (AA729090), Pilbara Ports Authority (AA766880)

A subsurface scientific instrument marked by a special light buoy, *Fl.Y.2s*, exists in position 20° 08.99 S 118° 38'.23 E.

Chart temporarily affected - Aus 52 - Aus 53

934(T)/2014 AUSTRALIA - WESTERN AUSTRALIA - Montebello Islands - Mooring buoys northwestwards

Date - Until 17 October 2014

Viking Seatech (AA766508)

12 yellow mooring buoys, *Fl.3s*, exist within 1NM radius of position 19° 56'.71 S 115° 19'.49 E.

Chart temporarily affected - Aus 328

935(T)/2014 AUSTRALIA - WESTERN AUSTRALIA - Pelsaert Bank - Survey operations completed

Former Notice - 752(T)/2014 is cancelled

Murphy Australia Oil Pty Ltd (AA765097)

Cancel this notice on receipt.

Chart formerly affected - Aus 332 - Aus 333 - Aus 751 - Aus 752 - Aus 753

936(T)/2014 AUSTRALIA - WESTERN AUSTRALIA - Rowley Shoals - Drilling operations westwards completed

Former Notice - 753(T)/2014 is cancelled

Repsol Exploration Australia Pty Ltd (AA766749)

Cancel this notice on receipt.

Chart formerly affected - Aus 326 - Aus 4722 (INT 722) - Aus 4723 (INT 723) - AX 04722U - AX 04723U

937(T)/2014 INDIAN OCEAN - Cocos Islands - Live firing completed

Former Notice - 839(T)/2014 is cancelled
Department of Defence (AA759708)

Cancel this notice on receipt.

Chart formerly affected - Aus 606 - Aus 4708 (INT 708) - Aus 4714 (INT 714) - AX 04708U - AX 04714U

938(T)/2014 AUSTRALIA - SOUTH AUSTRALIA - Fleurieu Peninsula - Haycock Point - Hulk; prohibited area

Former Notice - 657(T)/2014 is cancelled
Department of Planning, Transport and Infrastructure SA Notice 37/2014 (AA751067, AA751219, AA766339)

A stranded hulk, marked by a light *Fl. Y. 4s*, exists in position 35° 25'.23 S 138° 18'.33 E.

A prohibited area, marked by special buoys, exists in an area bounded by the following positions:

35° 25'.15 S 138° 18'.28 E

35° 25'.17 S 138° 18'.42 E

35° 25'.32 S 138° 18'.39 E

35° 25'.29 S 138° 18'.26 E.

Chart temporarily affected - Aus 485 - Aus 780

939(T)/2014 AUSTRALIA - SOUTH AUSTRALIA - Port Adelaide - Depth information

Former Notice - 305(T)/2014 is cancelled
Department of Planning, Transport and Infrastructure SA Notice 34/2014 (AA766282)

Available depths as at 5 September 2014:

<i>Berth</i>	<i>Metres</i>
Outer Harbor No1	11.0
Outer Harbor No2	10.5
* Outer Harbor No3	9.7
* Outer Harbor No6	13.6
* Outer Harbor No7	13.6
* Outer Harbor No8	15.5
* Outer Harbor Turning Basin	13.3
Osborne Wharf No1	8.3
Inner Harbor No29	9.5
* Inner Harbor No25	8.3
* Inner Harbor K	7.1
* Inner Harbor N	7.6
* Indicates new or revised entry	

Chart temporarily affected - Aus 137

940(T)/2014 SOUTHERN OCEAN - Great Australian Bight - Seismic survey completed

Former Notice - 92(T)/2014 is cancelled
Dolphin Geophysical Pte Ltd (AA715401)

Cancel this notice on receipt.

Chart formerly affected - Aus 4727 (INT 727)

941(T)/2014 AUSTRALIA - VICTORIA - Port Phillip - South Channel - Shoaling removed; virtual AIS removed

Former Notice - 937(T)/2013 is cancelled
Victorian Notice 156/2014 (AA766135)

Cancel this notice on receipt.

Chart formerly affected - Aus 144 - Aus 158

942(T)/2014 AUSTRALIA - VICTORIA - Port Phillip - Port Melbourne - Webb Dock - Harbour works; silt curtain; retaining wall; light repositioned

Former Notice - 804(T)/2014 is cancelled

Date - Until 30 November 2016

Victorian Notices 71(T)/2014, 84(T)/2014, 138(T)/2014, 159(T)/2014 (AA733134, AA739510, AA760199, AA766333)

Harbour works associated with the construction of a new international container terminal are in progress.

The berths 3E (37° 50'.60 S 144° 54'.45 E), 4E (37° 50'.73 S 144° 54'.54 E) and 5E (37° 50'.87 S 144° 54'.65 E) are temporarily unavailable for access.

Two silt curtains, marked by lit flashing and unlit yellow buoys, exist between:

- 1- 37° 50'.44 S 144° 54'.23 E and 37° 50'.65 S 144° 54'.28 E
- 2- 37° 50'.35 S 144° 54'.30 E, 37° 50'.37 S 144° 54'.29 E and 37° 50'.38 S 144° 54'.25 E.

A retaining wall exists approximately 350m along the western shoreline from a position north of the Webb Dock West 2 pontoon and within the silt curtain.

The light (37° 50'.10 S 144° 54'.08 E) has been temporarily altered to *F.Bu. 11m 8M* and repositioned to 37° 50'.03 S 144° 54'.04 E.

Mariners are advised to navigate with caution in the area.

Chart temporarily affected - Aus 154

943(T)/2014 AUSTRALIA - VICTORIA - Port Phillip - St Leonards - Harbour works completed

Former Notice - 1232(T)/2013 is cancelled

Parks Victoria (AA7669014)

Cancel this notice on receipt.

Chart formerly affected - Aus 143 - Aus 157 - Aus 158

944(T)/2014 AUSTRALIA - VICTORIA - Western Port - Rhyll - Harbour works completed

Former Notice - 240(T)/2014 is cancelled

Parks Victoria (AA766901)

Cancel this notice on receipt.

Chart formerly affected - Aus 150

945(T)/2014 AUSTRIA - VICTORIA - Western Port - Stony Point - Harbour works completed

Former Notice - 474(T)/2014 is cancelled
Parks Victoria (AA766901)

Cancel this notice on receipt.

Chart formerly affected - Aus 152

HYDROGRAPHIC REPORTS

<i>Locality</i>	<i>Report</i>	<i>Ship/Authority</i>	<i>Observer</i>
PRODUCT	Tracing error		J Lin

NAVIGATION WARNINGS

The following radio messages have been received during the period to 25 Sep 2014. Signal copies of these messages may be destroyed. It is recommended that the reprint of Navigational Warnings should be kept in a file or a book divided into areas. Cancellation should be made on receipt of signals and reprints.

Rigs on location other than those listed in the latest Section III summary are the subject of Radio Navigational Warnings. Rigs in transit will not be the subject of Warnings.

AUSCOAST WARNING

- 203 Cancelled.
 204 Cancelled.
 205 Drill rig *Nan Hai 6* in position 19° 18'.60 S 116° 33'.67 E. 2.5M clearance requested.
 206 Drill rig *Stena Clyde* in position 12° 17'.50 S 124° 19'.80 E. 2.5M clearance requested.
 207 Cancelled.
 208 Cancelled.
 209 Cancelled.
 210 Cancelled.
 211 Two autonomous wave glider units deployed from 15 Sep 2014 to 30 Nov 2014 in the vicinity of Onslow Western Australia in the following coordinates:
 Area 1
 A. 21° 21'.5 S 114° 44'.7 E
 B. 21° 21'.5 S 114° 31'.7 E
 C. 21° 29'.6 S 114° 44'.7 E
 D. 21° 29'.6 S 114° 31'.7 E
 Area 2
 A. 21° 22'.5 S 114° 57'.7 E
 B. 21° 22'.5 S 114° 53'.4 E
 C. 21° 30'.1 S 114° 57'.7 E
 D. 21° 30'.1 S 114° 53'.4 E
 The wave gliders are black in colour 2 metres in length with a subsurface unit 4 metres below the surface. They are equipped with a yellow flashing light and orange flag. 2M clearance requested.
 212 12 x 6m yellow buoys *Fl.3s* established within 1M of position 19° 56'.71 S 115° 19'.48 E. 2M clearance requested.
 213 Cancelled.
 214 Drill rig *Jack Bates* in position 10° 38'.61 S 126° 11'.02 E. 2.5M clearance requested.
 215 Drill rig *Atwood Falcon* in position 21° 20'.97 S 114° 04'.40 E. 2.5M clearance requested.

NAVAREA X WARNINGS

- 056 Cancelled.
 057 Cancelled.

Navigational warnings in force as at 250001UTC SEP 14.

Auscoast

2014 140 160 191 192 195 197 199 205 206 211 212 214 215

Navarea X

2014 Nil.

Summary of mobile drilling rigs as at 250001UTC SEP 14.

<i>Name</i>	<i>Position</i>
Transocean Legend	11° 00'.40 S 126° 41'.90 E
Jack Bates	10° 38'.61 S 126° 11'.02 E
Stena Clyde	12° 17'.50 S 124° 19'.80 E
Noble Clyde Boudreaux	13° 49'.00 S 123° 19'.35 E
Deepwater Millennium	16° 20'.80 S 119° 43'.70 E
Nan Hai 6	19° 18'.60 S 116° 33'.67 E
Atwood Osprey	19° 48'.67 S 115° 17'.73 E
Atwood Eagle	19° 58'.22 S 115° 12'.76 E
Ocean America	20° 24'.49 S 114° 50'.95 E
Deepwater Frontier	19° 49'.81 S 114° 34'.13 E
Atwood Falcon	21° 20'.95 S 114° 04'.40 E

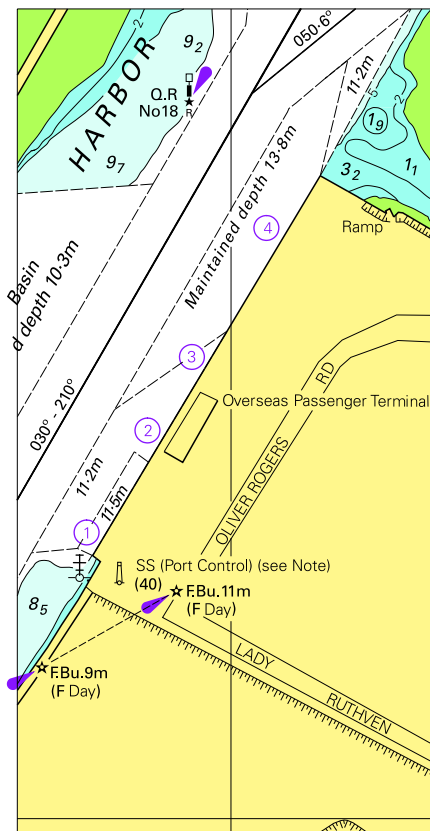
NAVAREA XIV WARNINGS

Nil.

Navarea XIV warnings in force as at 250001UTC SEP 14.

2014 Nil.

To accompany Australian Notice to Mariners 907/2014



© Commonwealth of Australia 2014
Block for chart Aus 137 (55.2 x 109.0mm)