



12 September 2014

Edition 18

Australian Notices to Mariners are the authority for correcting Australian Charts and Publications

---

# AUSTRALIAN NOTICES TO MARINERS

**Notices 842 - 894**



Published fortnightly by the Australian Hydrographic Service

Commodore B.K. BRACE RAN  
*Hydrographer of Australia*

---

## SECTIONS.

- I. Australian Notices to Mariners, including blocks and notes.
- II. Hydrographic Reports.
- III. Navigational Warnings.

## SUPPLEMENTS.

- I. Tracings
- II. Cumulative List of Australian Notices to Mariners.
- III. Cumulative List of Temporary and Preliminary Australian Notices to Mariners.
- IV. Temporary and Preliminary Notices in force.
- V. Amendments to Admiralty List of Lights and Fog Signals (Vol K), Radio Signals (NP 281(2), 282, 283(2), 285, 286(4)) and Sailing Directions (NP 9, 13, 14, 15, 33, 34, 35, 36, 39, 44, 51, 60, 61, 62, 100, 136).

---

© Commonwealth of Australia 2014

This work is copyright. Apart from any use permitted under the Copyright Act 1968, no part may be reproduced by any process, adapted, communicated or commercially exploited without prior written permission from The Commonwealth represented by the Australian Hydrographic Service.

## IMPORTANT NOTICE

This edition of Notices to Mariners includes all significant information affecting AHS products which the AHS has become aware of since the last edition. All reasonable efforts have been made to ensure the accuracy and completeness of the information, including third party information, on which these updates are based. The AHS regards third parties from which it receives information as reliable, however the AHS cannot verify all such information and errors may therefore exist. The AHS does not accept liability for errors in third party information.

---

## GENERAL INSTRUCTIONS

The substance of these notices should be inserted on the charts affected.

Bearings are referred to the true compass and are reckoned clockwise from North; those relating to lights are given as seen by an observer from seaward. Positions quoted in permanent notices relate to the horizontal datum for the chart(s). When preliminary or temporary notices affect multiple charts, positions will be provided in relation to only one horizontal datum and that datum will be specified. When the multiple charts do not have a common horizontal datum, mariners will be required to adjust the position(s) for those charts not on the specified datum. The range quoted for a light is its nominal range. Depths are with reference to the chart datum of each chart. Heights are above mean high water springs or mean higher high water, as appropriate.

The capital letter (P) or (T) after the number of any notice denotes a preliminary or temporary notice respectively, which are contained separately at the end of the permanent notices. A star (\*) adjacent to the number of a notice indicates that the notice is based on original information.

---

## REPORTING OF DANGERS

Mariners are particularly requested to notify the AUSTRALIAN HYDROGRAPHIC SERVICE, Locked Bag 8801 Wollongong, NSW 2500 (Fax 02-4223 6599, e-mail [Hydro.NTM@defence.gov.au](mailto:Hydro.NTM@defence.gov.au) or, alternatively by filling in and submitting the [Hydrographic Notes](#) forms located on the web site – [www.hydro.gov.au](http://www.hydro.gov.au)), immediately on the discovery of new dangers or suspected dangers to navigation. For changes or defects in aids to navigation notify AusSAR (Fax 02-6230 6868 or email [rccaus@amsa.gov.au](mailto:rccaus@amsa.gov.au)).

---

## AUTHORISED USE

Copies of Australian notices are available free of charge from the Australian Hydrographic Service (AHS) website ([www.hydro.gov.au](http://www.hydro.gov.au)) and through the eNotices (email) service ([www.hydro.gov.au/enotices/enotices.htm](http://www.hydro.gov.au/enotices/enotices.htm)).

Individual Notices may be copied for the purpose of inserting Notice substance on official charts and publications. Paper copies may be printed by chart agents and distributed to customers on a cost recovery basis. Participating chart agents are listed on the AHS website as providing a 'Paper Notices to Mariners' service ([www.hydro.gov.au/prodserv/distributors/distributors.htm](http://www.hydro.gov.au/prodserv/distributors/distributors.htm)). Copies of the notices may not be sold for profit without prior written agreement.

# NUMERICAL INDEX OF NOTICES TO MARINERS

## Edition No 18

Notices	Aus Chart, INT Chart, ENC Cell, AHP, BA Pubs
842	Aus 52, 53, 299, 301
843	Amendment to Australian National Tide Tables 2014
844	Aus 245, 271, 819
845	Aus 830, AXA 0830T
846	Aus 257
847	Aus 252, 253
848	Aus 309, 722, AX 00309T, 00309U, 00722T
849	Aus 58, 59
850	Aus 119
851	Aus 357, 487
852	Aus 152
853	Aus 173, 795
854	Aus 800
855	Aus 766
856	Aus 173
857	Aus 179
858	Aus 177, 792
859	Aus 171
860	Aus 168
861(T)	Aus 222, 812, 813
862(T)	Aus 207, 208
863(T)	Aus 242
864(T)	Aus 262, 263, AX 00262T
865(T)	Aus 262, 830, AX 00262T, AXA 0830T
866(T)	Aus 826, 827
867(T)	Aus 826
868(T)	Aus 245, 246, 819
869(T)	Aus 244, 245
870(T)	Aus 301, 4720, INT 720, AX 04720U
871(T)	Aus 235, 236, 237, 238, 814, 815
872(T)	Aus 237
873(T)	Aus 256, 257
874(T)	Aus 4
875(T)	Aus 29, 309, 316, 722, AX 00309T, 00309U, 00722T
876(T)	Aus 314, 319, 4721, 4722, INT 721, 722, AX 00314U, 00319U, 04721U, 04722U
877(T)	Aus 314, 4721, 4722, INT 721, 722, AX 00314U, 04721U, 04722U
878(T)	Aus 328
879(T)	Aus 64, 327, 328, 742, 743, 744
880(T)	Aus 111, 117, AX 00117T
881(T)	Aus 327, 741, 4722, 4723, INT 722, 723, AX 04722U, 04723U
882(T)	Aus 327, 741
883(T)	Aus 329, 744, 745
884(T)	Aus 328
885(T)	Aus 312, 4721, INT 721, AX 00312U, 04721U
886(T)	Aus 312, AX 00312U
887(T)	Aus 322, 4722, INT 722, AX 00322U, 04722U
888(T)	Aus 322, 4721, 4722, INT 721, 722, AX 00322U, 04721U, 04722U
889(T)	Aus 64, 743, 744
890(T)	Aus 740
891(T)	Aus 134, 343, 776, AX 00343S, 00776S
892(T)	Aus 343, 485, 776, AX 00343S, 00776S
893(T)	Aus 143, 144, 158
894(T)	Aus 171, 796

# NUMERICAL INDEX OF CHARTS AFFECTED

## Edition No 18

Aus Chart	Notices
Aus 4	874(T)
Aus 29	875(T)
Aus 52	842
Aus 53	842
Aus 58	849
Aus 59	849
Aus 64	879(T), 889(T)
Aus 111	880(T)
Aus 117	880(T)
Aus 119	850
Aus 134	891(T)
Aus 143	893(T)
Aus 144	893(T)
Aus 152	852
Aus 158	893(T)
Aus 168	860
Aus 171	859, 894(T)
Aus 173	853, 856
Aus 177	858
Aus 179	857
Aus 207	862(T)
Aus 208	862(T)
Aus 222	861(T)
Aus 235	871(T)
Aus 236	871(T)
Aus 237	871(T), 872(T)
Aus 238	871(T)
Aus 242	863(T)
Aus 244	869(T)
Aus 245	844, 868(T), 869(T)
Aus 246	868(T)
Aus 252	847
Aus 253	847
Aus 256	873(T)
Aus 257	846, 873(T)
Aus 262	864(T), 865(T)
Aus 263	864(T)
Aus 271	844
Aus 299	842
Aus 301	842, 870(T)
Aus 309	848, 875(T)
Aus 312	885(T), 886(T)
Aus 314	876(T), 877(T)
Aus 316	875(T)
Aus 319	876(T)
Aus 322	887(T), 888(T)
Aus 327	879(T), 881(T), 882(T)
Aus 328	878(T), 879(T), 884(T)
Aus 329	883(T)
Aus 343	891(T), 892(T)
Aus 357	851
Aus 485	892(T)
Aus 487	851
Aus 722	848, 875(T)

Aus Chart	Notices
Aus 740	890(T)
Aus 741	881(T), 882(T)
Aus 742	879(T)
Aus 743	879(T), 889(T)
Aus 744	879(T), 883(T), 889(T)
Aus 745	883(T)
Aus 766	855
Aus 776	891(T), 892(T)
Aus 792	858
Aus 795	853
Aus 796	894(T)
Aus 800	854
Aus 812	861(T)
Aus 813	861(T)
Aus 814	871(T)
Aus 815	871(T)
Aus 819	844, 868(T)
Aus 826	866(T), 867(T)
Aus 827	866(T)
Aus 830	845, 865(T)
Aus 4720	870(T)
Aus 4721	876(T), 877(T), 885(T), 888(T)
Aus 4722	876(T), 877(T), 881(T), 887(T), 888(T)
Aus 4723	881(T)
AX 00117T	880(T)
AX 00262T	864(T), 865(T)
AX 00309T	848, 875(T)
AX 00309U	848, 875(T)
AX 00312U	885(T), 886(T)
AX 00314U	876(T), 877(T)
AX 00319U	876(T)
AX 00322U	887(T), 888(T)
AX 00343S	891(T), 892(T)
AX 00722T	848, 875(T)
AX 00776S	891(T), 892(T)
AX 04720U	870(T)
AX 04721U	876(T), 877(T), 885(T), 888(T)
AX 04722U	876(T), 877(T), 881(T), 887(T), 888(T)
AX 04723U	881(T)
AXA 0830T	845, 865(T)

INT Chart	Notices
INT 720	870(T)
INT 721	876(T), 877(T), 885(T), 888(T)
INT 722	876(T), 877(T), 881(T), 887(T), 888(T)
INT 723	881(T)

**842 AUSTRALIA - Product**

Australian Hydrographic Service (AA764566), UKHO (AA763578)

**New Edition to be published shortly**

<i>Chart</i>	<i>Title</i>	<i>Scale</i>	<i>Expected Publication Date</i>
Aus 52	Australia - North West Coast - Western Australia - Entrance Channel to Port Hedland	1:25 000	26 September 2014
Aus 53	Australia - North West Coast - Western Australia - Approaches to Port Hedland	1:50 000	26 September 2014
Aus 299	Australia - North Coast - Torres Strait - Approaches to Thursday Island	1:12 500	26 September 2014
Aus 301	Australia - North Coast - Queensland - Booby Island to Archer River	1:300 000	26 September 2014

**Admiralty publication**

<i>NP No</i>	<i>Title</i>	<i>Date</i>	<i>Remarks</i>
NP9 & e-NP9	Antarctic Pilot (Eighth Edition) 2014.	18/09/2014	The Seventh Edition 2009 is cancelled.
NP281(2)	Admiralty List of radio Signals. Maritime Radio Stations. The Americas, Far East and Oceania.	11/09/2014	The 2013/14 edition is cancelled.

For further details refer to the AHS website at [www.hydro.gov.au](http://www.hydro.gov.au) for new edition and new chart stock arrival information.

When placing orders with a chart agent, mariners should advise whether their order pertains to the current edition or the new edition.

**843 AUSTRALIA - Amendment to Australian National Tide Tables 2014**

Australian Hydrographic Service (AA763393)

Page xxxiii

*Amend* Gladstone To Chart Datum AUS 244 NE 29 Aug 2014 0.0

*Insert* Gladstone To Chart Datum AUS 271 NC 29 Aug 2014 0.0

**844\* AUSTRALIA - QUEENSLAND - Gladstone - Curtis Island - Flare stack; chart limits**

Maritime Safety Queensland (AA762693), Australian Hydrographic Service (AA761389)

**Aus 245 [720/2014]**

Insert	flare stack, with legend <i>FLARES</i> (100)	23° 46'.340 S	151° 12'.552 E
	flare stack, with legend <i>FLARE</i> (30)	23° 46'.832 S	151° 13'.097 E
	magenta limits, with legend <i>Aus 271</i> in SE corner, between	23° 50'.12 S	151° 09'.82 E
		23° 46'.59 S	151° 09'.82 E
		23° 46'.59 S	151° 15'.90 E
		23° 50'.12 S	151° 15'.90 E
		23° 50'.12 S	151° 09'.82 E
	magenta limits, with legend <i>Aus 272</i> in SW corner, between	23° 44'.82 S	151° 12'.05 E
		23° 47'.70 S	151° 12'.05 E
		23° 47'.70 S	151° 09'.21 E
		23° 44'.82 S	151° 09'.21 E
	magenta continuous line, between	23° 48'.15 S	151° 15'.07 E
		23° 48'.15 S	151° 16'.80 E
		23° 50'.40 S	151° 16'.80 E
Delete	magenta continuous line, between	23° 48'.15 S	151° 15'.07 E
		23° 48'.92 S	151° 15'.07 E
		23° 49'.14 S	151° 15'.63 E
		23° 49'.15 S	151° 16'.81 E
		23° 50'.40 S	151° 16'.81 E

**Aus 271 [NC]**

Insert	flare stack, with legend <i>FLARE</i> (30)	23° 46'.832 S	151° 13'.097 E
--------	--	---------------	----------------

**Aus 819 [NE 1/8/2014]**

Insert	flare stack, with legend <i>FLARES</i> (100)	23° 46'.34 S	151° 12'.55 E
	flare stack, with legend <i>FLARE</i> (30)	23° 46'.83 S	151° 13'.10 E
	magenta limits, with legend <i>Aus 272</i> in SW corner, between	23° 47'.70 S	151° 12'.05 E
		23° 47'.70 S	151° 09'.21 E
		23° 44'.17 S	151° 09'.21 E
		23° 44'.17 S	151° 12'.05 E
		23° 47'.70 S	151° 12'.05 E

**845\* AUSTRALIA - QUEENSLAND - Great Barrier Reef - Stagg Patches to Moore Reef - Depths**  
LADS Flight (DHDB 2715595)

**Aus 830 [811/2014]**

Insert	depth, 1m, enclosed by contour	17° 00'.68 S	146° 07'.74 E
	depth, 2m, enclosed by contour	16° 59'.91 S	146° 13'.44 E
	danger line, between	16° 57'.58 S	146° 12'.46 E
		16° 58'.06 S	146° 12'.63 E
		16° 58'.10 S	146° 13'.03 E
		16° 57'.99 S	146° 12'.15 E
	depth, 6m, enclosed by contour	16° 57'.16 S	146° 12'.96 E
	depth, 0m, enclosed by contour	16° 53'.74 S	146° 14'.11 E
	depth, 4m, enclosed by contour		
Delete	depth, 3m	17° 00'.8 S	146° 07'.8 E
	depth, 29m	16° 59'.8 S	146° 13'.4 E
	danger line, between	16° 57'.6 S	146° 12'.5 E
		16° 58'.1 S	146° 13'.0 E
		16° 58'.0 S	146° 12'.5 E
		16° 58'.2 S	146° 12'.3 E
	depth, 21m	16° 53'.8 S	146° 14'.2 E
	depth, 14m		
	depth, 31m		

**AXA 0830T [807/2014]**

Insert	depth, 1m, enclosed by contour	17° 00'.68 S	146° 07'.74 E
	depth, 2m, enclosed by contour	16° 59'.91 S	146° 13'.44 E
	danger line, between	16° 57'.58 S	146° 12'.46 E
		16° 58'.06 S	146° 12'.63 E
		16° 58'.10 S	146° 13'.03 E
		16° 57'.99 S	146° 12'.15 E
	depth, 6m, enclosed by contour	16° 57'.16 S	146° 12'.96 E
	depth, 0m, enclosed by contour	16° 53'.74 S	146° 14'.11 E
	depth, 4m, enclosed by contour		
Delete	depth, 3m	17° 00'.8 S	146° 07'.8 E
	depth, 29m	16° 59'.8 S	146° 13'.4 E
	danger line, between	16° 57'.6 S	146° 12'.5 E
		16° 58'.1 S	146° 13'.0 E
		16° 58'.0 S	146° 12'.5 E
		16° 58'.2 S	146° 12'.3 E
	depth, 21m	16° 53'.8 S	146° 14'.2 E
	depth, 14m		
	depth, 31m		

**846\* AUSTRALIA - QUEENSLAND - Townsville - Maintained depths; berth**  
Maritime Safety Queensland Notice 503(T)/2014 (AA762138, AA763673)

**Aus 257 [676/2014]**

Amend	maintained depth to 12.0m	19° 15'.03 S	146° 49'.87 E
	maintained depth to 10.7m	19° 15'.09 S	146° 49'.97 E
Delete	berth desig 6	19° 15'.13 S	146° 50'.04 E

**847\* AUSTRALIA - QUEENSLAND - Whitsunday Island - Whitehaven Beach - Light buoy**

Former Notice - 177(T)/2014 is cancelled  
Maritime Safety Queensland Notice 498/2014 (AA761552, AA762889)

**Aus 252 [674/2014]**

Substitute	north cardinal cylindrical light buoy, Q, with topmark for light beacon	20° 17'.5 S	149° 03'.4 E
------------	---	-------------	--------------

**Aus 253 [674/2014]**

Substitute	north cardinal cylindrical light buoy, Q, with topmark for light beacon	20° 17'.54 S	149° 03'.35 E
------------	---	--------------	---------------

**848\* AUSTRALIA - NORTHERN TERRITORY - Shoal Bay - Spoil ground**  
Department of Transport NT (AA763648)

**Aus 309 [726/2014]**

Insert	dashed line with legend <i>Spoil Ground</i> , between	12° 14'.12 S	130° 49'.83 E
		12° 13'.18 S	130° 48'.82 E
		12° 15'.16 S	130° 46'.94 E
		12° 16'.10 S	130° 47'.95 E
		12° 14'.12 S	130° 49'.83 E

**Aus 722 [771/2014]**

Insert	dashed line with legend <i>Spoil Ground</i> , between	12° 14'.12 S	130° 49'.83 E
		12° 13'.18 S	130° 48'.82 E
		12° 15'.16 S	130° 46'.94 E
		12° 16'.10 S	130° 47'.95 E
		12° 14'.12 S	130° 49'.83 E

**AX 00309T [726/2014]**

Insert	dashed line with legend <i>Spoil Ground</i> , between	12° 14'.12 S	130° 49'.83 E
		12° 13'.18 S	130° 48'.82 E
		12° 15'.16 S	130° 46'.94 E
		12° 16'.10 S	130° 47'.95 E
		12° 14'.12 S	130° 49'.83 E

**AX 00309U [726/2014]**

Insert	dashed line with legend <i>Spoil Ground</i> , between	12° 14'.12 S	130° 49'.83 E
		12° 13'.18 S	130° 48'.82 E
		12° 15'.16 S	130° 46'.94 E
		12° 16'.10 S	130° 47'.95 E
		12° 14'.12 S	130° 49'.83 E

**AX 00722T [771/2014]**

Insert	dashed line with legend <i>Spoil Ground</i> , between	12° 14'.12 S	130° 49'.83 E
		12° 13'.18 S	130° 48'.82 E
		12° 15'.16 S	130° 46'.94 E
		12° 16'.10 S	130° 47'.95 E
		12° 14'.12 S	130° 49'.83 E

**849\* AUSTRALIA - WESTERN AUSTRALIA - Dampier - Light beacons**  
AHS (AA762637)

**Aus 58 [NE 1/8/2014]**

Amend	light beacon to <i>AlOc(3)GBuBu.6s P5</i>	20° 32'.91 S	116° 42'.65 E
	light beacon to <i>AlOc(3)WBUbu.6s PR1</i>	20° 33'.23 S	116° 42'.56 E
	light beacon to <i>AlOc(3)GBuBu.6s P7</i>	20° 33'.49 S	116° 42'.78 E

**Aus 59 [NE 1/8/2014]**

Amend	light beacon to <i>AlOc(3)GBuBu.6s 13m 7M P5</i>	20° 32'.91 S	116° 42'.65 E
	light beacon to <i>AlOc(3)WBUbu.6s 24m 7M PR1</i>	20° 33'.23 S	116° 42'.56 E
	light beacon to <i>AlOc(3)GBuBu.6s 13m 7M P7</i>	20° 33'.49 S	116° 42'.78 E

**850\* AUSTRALIA - WESTERN AUSTRALIA - Esperance - Light beacons**  
Esperance Ports Sea and Land (AA762573)

**Aus 119 (plan, Esperance) [528/2014]**

Insert	port lateral light beacon, <i>Fl.R.3s 7m 5M</i> , with topmark	33° 52'.043 S	121° 54'.269 E
Move	light beacon to	33° 51'.95 S	121° 54'.20 E
		33° 51'.949 S	121° 54'.212 E
Delete	light beacon	33° 52'.05 S	121° 54'.26 E



**851\* AUSTRALIA - VICTORIA - Cape Liptrap to Kent Group - Chart limits**  
Boat Books - Australia NSW (AA762389)

**Aus 357 [1260/2013]**

Insert	magenta limits, with legend <i>Aus 802</i> in NE corner, between	38° 47'.2 S	146° 20'.0 E
		38° 47'.2 S	147° 26'.0 E
		39° 18'.5 S	147° 26'.0 E

Delete	magenta limits, with legend <i>Aus 802</i> , centred on	39° 03'.0 S	146° 54'.0 E
--------	---	-------------	--------------

**Aus 487 [1263/2013]**

Insert	magenta limits, with legend <i>Aus 802</i> in SE corner, between	39° 33'.4 S	147° 26'.0 E
		38° 47'.2 S	147° 26'.0 E
		38° 47'.2 S	145° 52'.0 E
		39° 33'.4 S	145° 52'.0 E
		39° 33'.4 S	147° 26'.0 E

Delete	magenta limits, with legend <i>Aus 802</i> , centred on	39° 10'.0 S	146° 40'.0 E
--------	---	-------------	--------------

**852\* AUSTRALIA - VICTORIA - Western Port - Stony Point - Beacon**  
AHS (AA761937)

**Aus 152 (plan, Hanns Inlet) [495/2014]**

Delete	beacon	38° 22'.42 S	145° 13'.31 E
--------	--------	--------------	---------------

**853\* AUSTRALIA - TASMANIA - D'Entrecasteaux Channel - Tower Bay to Simpsons Point - Marine farms**  
Department of Primary Industries, Parks, Water and Environment TAS (DHDB 2655825)

**Aus 173 [443/2014]**

Delete	marine farm, centred on	43° 23'.4 S	147° 02'.2 E
	marine farm, centred on	43° 15'.5 S	147° 07'.4 E
	marine farm, centred on	43° 22'.0 S	147° 10'.2 E

**Aus 795 [443/2014]**

Delete	marine farm, centred on	43° 23'.4 S	147° 02'.2 E
	marine farm, centred on	43° 22'.0 S	147° 10'.5 E
	marine farm, centred on	43° 16'.4 S	147° 16'.2 E

**854\* AUSTRALIA - TASMANIA - Flinders Island - Marshall Bay - Marine farm; chart note**  
Department of Primary Industries, Parks, Water and Environment TAS (DHDB 2655825)

**Aus 800 [165/2014]**

Delete	marine farm, centred on	39° 55'.8 S	147° 50'.0 E
	note MARINE FARMS, centred on	39° 57'.5 S	148° 04'.0 E

**855\* AUSTRALIA - TASMANIA - Great Oyster Bay - Little Christmas Island - Marine farm**  
Department of Primary Industries, Parks, Water and Environment TAS (DHDB 2655825)

**Aus 766 [369/2014]**

Delete	marine farm, centred on	42° 15'.2 S	148° 01'.9 E
--------	-------------------------	-------------	--------------

**856 AUSTRALIA - TASMANIA - Huon River - Eggs and Bacon Bay - Buoy**

*Former Notice - 552(T)/2014 is cancelled*

Marine and Safety Tasmania Notice M96/2014 (AA761192)

**Aus 173 [853/2014]**

Substitute	starboard conical buoy, with topmark for beacon	43° 14'.9 S	147° 05'.6 E
------------	---	-------------	--------------

**857\* AUSTRALIA - TASMANIA - Little Dog Island to Fisher Island - Marine farms**

Department of Primary Industries, Parks, Water and Environment TAS (DHDB 2655825)

**Aus 179 (plan, Franklin Sound) [165/2014]**

Delete marine farm, centred on 40° 14'.4 S 148° 12'.3 E

**Aus 179 (plan, Approaches to Lady Barron) [165/2014]**Delete marine farm, centred on 40° 14'.40 S 148° 12'.25 E  
Delete marine farm, centred on 40° 12'.92 S 148° 14'.31 E**858\* AUSTRALIA - TASMANIA - Macquarie Harbour - Marine farms**

Department of Primary Industries, Parks, Water and Environment TAS (DHDB 2655825)

**Aus 177 [370/2014]**

Insert accompanying block 42° 19'.0 S 145° 22'.0 E

Delete marine farm, centred on 42° 14'.0 S 145° 13'.4 E  
Delete marine farm, centred on 42° 15'.8 S 145° 14'.5 E  
Delete marine farm, centred on 42° 12'.6 S 145° 17'.9 E  
Delete marine farm, centred on 42° 10'.9 S 145° 18'.6 E**Aus 177 (plan, Strahan) [370/2014]**

Delete marine farm, centred on 42° 10'.78 S 145° 18'.72 E

**Aus 177 (plan, Hells Gates) [370/2014]**Delete marine farm, centred on 42° 13'.97 S 145° 13'.43 E  
Delete marine farm, centred on 42° 12'.58 S 145° 17'.90 E**Aus 792 [858/2013]**

Insert accompanying block 42° 19'.0 S 145° 22'.0 E

Delete marine farm, centred on 42° 12'.6 S 145° 17'.9 E  
Delete marine farm, centred on 42° 10'.9 S 145° 18'.6 E**859\* AUSTRALIA - TASMANIA - Norfolk Bay - Deer Point - Marine farm**

Department of Primary Industries, Parks, Water and Environment TAS (DHDB 2655825)

**Aus 171 [409/2014]**

Delete marine farm, centred on 43° 01'.4 S 147° 45'.0 E

**860\* AUSTRALIA - TASMANIA - River Tamar - Mowbray Point - Marine farms**

Department of Primary Industries, Parks, Water and Environment TAS (DHDB 2655825)

**Aus 168 [266/2014]**

Insert accompanying block 41° 14'.0 S 146° 57'.5 E

**861(T)/2014 AUSTRALIA - NEW SOUTH WALES - Clarence River - Harwood - Harbour works completed**

Former Notice - 496(T)/2014 is cancelled

Port of Clarence River (Yamba) Notice 5(T)/2014 (AA763956)

Cancel this notice on receipt.

**Chart formerly affected - Aus 222 - Aus 812 - Aus 813****862(T)/2014 AUSTRALIA - NEW SOUTH WALES - Newcastle - Depth information**

Former Notice - 820(T)/2014 is cancelled

Newcastle Port Corporation (AA764351)

Available depths as at 8 September 2014:

<i>Berth</i>	<i>Metres</i>	<i>Remarks</i>
Eastern Basin 1	11.4	
Eastern Basin 2 North of Ch 450	11.6	
Eastern Basin 2 South of Ch 450	11.5	
Western Basin 3	11.6	
Western Basin 4	11.6	
Channel Berth	9.7	
Dyke 1	12.8	
Dyke 2	12.8	
* Dyke 4	16.4	
* Dyke 5	16.4	
* Dyke 6	5.3	
Mayfield 4 Ch 27 to 266	12.7	
BHP Wharf 6 to Ch 1050	7.6	
Kooragang 2	11.6	
Kooragang 2 North Dolphin Ch 182 to 243	11.6	
Kooragang 2 South Dolphin Ch -92 to 00	11.5	
Kooragang 3 Ch -40 to 00	12.6	
Kooragang 3 Ch 00 to 220	13.2	
Kooragang 4	16.5	
Kooragang 5	16.5	
Kooragang 6	16.3	
Kooragang 7	16.3	
Kooragang 8	16.2	
Kooragang 9	16.3	
Kooragang 10	15.9	
Throsby 1 Ch 850 to 1030	8.9	
Carrington Wharf		To be sounded as and when required
Foreshore Park Berth	5.9	
Elgo Wharf		To be sounded as and when required
<i>Channels</i>		
Entrance Approach	17.7	
Entrance Channel (18.0m)	17.8	
Entrance Channel (17.4m)	17.4	
Entrance Channel (16.8m)	16.8	
Entrance Channel (16.2m)	16.2	
Entrance Channel to Horseshoe	15.2	
* Horseshoe	15.0	
Steelworks Channel to Swinging Basin	15.2	
Swinging Basin	15.2	
Hunter River South Arm (Kooragang 6 to buoy 18)	15.1	
Hunter River South Arm (buoy 18 to buoy 20)	14.8	
Basin Cutting	12.6	
Basin Area to Eastern & Western Basin Berths	12.3	
Basin Area to 1 Throsby	9.4	
Stockton Crossing	3.6	
* Indicates new or revised entry.		

**Chart temporarily affected - Aus 207 - Aus 208**

**863(T)/2014 AUSTRALIA - QUEENSLAND - Burnett River - Millaquin Reach - Dredging operations completed***Former Notice* - 339(T)/2014 is cancelled

Maritime Safety Queensland Notice 159(T)/2014 (AA730565)

Cancel this notice on receipt.

**Chart formerly affected - Aus 242****864(T)/2014 AUSTRALIA - QUEENSLAND - Cairns - Light beacon unlit***Former Notice* - 782(T)/2014 is cancelled

Maritime Safety Queensland Notices 472(T)/2014, 520(T)/2014 (AA759608, AA763847)

C17 light beacon, *Fl.G.4s* (16° 53'.98 S 145° 47'.47 E), is unlit; a special light buoy, *F.Y.*, exists in situ.**Chart temporarily affected - Aus 262 - Aus 263 - AX 00262T****865(T)/2014 AUSTRALIA - QUEENSLAND - Cairns - Dredging operations***Date* - Until 6 October 2014

Maritime Safety Queensland Notice 535(T)/2014 (AA764288)

The dredge *Brisbane* is conducting dredging operations in the Entrance Channel (16° 52'.3 S 145° 48'.5 E).

Mariners are advised to navigate with caution in the area.

**Chart temporarily affected - Aus 262 - Aus 830 - AX 00262T - AXA 0830T****866(T)/2014 AUSTRALIA - QUEENSLAND - Cape Bowling Green - Light buoy off station eastwards**

Australian Institute of Marine Science (AA764057)

The isolated danger light buoy, *Fl(2)5s* (19° 18'.12 S 147° 37'.05 E), is off station.**Chart temporarily affected - Aus 826 - Aus 827****867(T)/2014 AUSTRALIA - QUEENSLAND - Cape Upstart - Light buoy re-established***Former Notice* - 735(T)/2014 is cancelled

Maritime Safety Queensland Notice 533/2014 (AA764264)

Cancel this notice on receipt.

**Chart formerly affected - Aus 826****868(T)/2014 AUSTRALIA - QUEENSLAND - Gladstone - East Banks to Parsons Point - Scientific instruments***Date* - Until 15 December 2014

Maritime Safety Queensland Notice 523(T)/2014 (AA763940)

Subsurface scientific instruments exist in the following positions:

23° 52'.62 S 151° 26'.92 E

23° 53'.09 S 151° 21'.32 E

23° 50'.94 S 151° 17'.59 E.

**Chart temporarily affected - Aus 245 - Aus 246 - Aus 819****869(T)/2014 AUSTRALIA - QUEENSLAND - Gladstone - Clinton Channel - Light beacons charted***Former Notice* - 57(P)/2014 is cancelled

Australian Hydrographic Service (AA761389)

Cancel this notice on receipt.

**Chart formerly affected - Aus 244 - Aus 245**

**870(T)/2014 AUSTRIA - QUEENSLAND - Gulf of Carpentaria - Seismic survey completed**

*Former Notice* - 750(T)/2014 is cancelled

Gulf Energy Ltd (AA763630)

Cancel this notice on receipt.

**Chart formerly affected - Aus 301 - Aus 4720 (INT 720) - AX 04720U**

**871(T)/2014 AUSTRALIA - QUEENSLAND - Moreton Bay - Brisbane River - Depth information***Former Notice - 824(T)/2014 is cancelled*

Brisbane Port Corporation (AA764050)

Available depths and under keel clearances (UKC) at 5 September 2014:

<i>Berth</i>	<i>Metres</i>	<i>Remarks</i>
* Fisherman Islands No12	14.2	
Fisherman Islands No11	14.0	
Fisherman Islands No10	14.0	
* Fisherman Islands No9	14.2	
Fisherman Islands No8	14.0	
Fisherman Islands No7	14.0	
Fisherman Islands No6	14.1	
* Fisherman Islands No5	14.0	
Fisherman Islands No4	14.0	
Fisherman Islands No3	14.1	
Fisherman Islands No2	14.2	
Fisherman Islands No1	14.0	
Fisherman Islands Grain and Woodchip	13.0	
* Caltex Fisherman Islands	14.3	
* Fisherman Islands Coal	14.3	
Fisherman Islands General Purpose	11.5	
* Luggage Point Pump Out Facility	12.4	
* BP Luggage Point	14.3	
Caltex Products	10.1	
Cement Australia Co Wharf	9.8	
BP Products	10.9	
Viva Energy	10.9	
Graincorp Liquid Terminal	10.3	
* Incitec North	10.2	
* Incitec South	10.5	
Pinkenba 1	10.4	
Pinkenba 2	10.4	
Riverside Marina	-	
Sugar Terminal	9.7	
Cairncross Fitting Out Wharf	7.1	
Cairncross Breasting Wharf	4.4	
Brisbane Naval Wharf	4.3	
Maritime No1	9.1	
Hamilton No4	10.6	
* Hamilton No1	8.9	
Brisbane Cruise Ship Terminal	8.9	

	<i>Metres</i>	<i>UKC/Remarks</i>
<i>Moreton Bay:</i>		
North West Channel	15.0	2.3 (280m width)
North West Bypass Channel	9.2	1.6
Spitfire Channel	15.0	1.5 (600m width)
East Knoll Bypass Channel	6.0	1.4
East Channel	15.0	1.5 (300m width from western side)
Main Channel (M8 - M9)	10.0	1.8
Entrance Channel (E5 - EBCN)	14.7	1.5

<i>Brisbane River:</i>		
Outer Bar Cutting	14.0	1.46
Inner Bar Cutting	14.0	1.46
Fisherman Islands Swing Basin	14.0	1.3
Fisherman Islands Swing Basin (11.5)	11.3	0.6
River	9.1	0.6 / 0.9 (draft/tide)
Cement Australia Swing Basin	9.1	0.6 / 0.9 (draft/tide)
Pinkenba Swing Basin	9.1	0.6 / 0.9 (draft/tide)
Hamilton Swing Basin	8.9	0.6 / 0.9 (draft/tide)
* Indicates new or revised entry.		

**Chart temporarily affected - Aus 235 - Aus 236 - Aus 237 - Aus 238 - Aus 814 - Aus 815**

**872(T)/2014 AUSTRALIA - QUEENSLAND - Moreton Bay - Brisbane River - Luggage Point - Harbour works completed**

*Former Notice - 345(T)/2014 is cancelled*

Maritime Safety Queensland Notice 154(T)/2014 (AA729100)

Cancel this notice on receipt.

**Chart formerly affected - Aus 237**

**873(T)/2014 AUSTRALIA - QUEENSLAND - Townsville - Depth information**

*Former Notice - 788(T)/2014 is cancelled*

Maritime Safety Queensland Notice 526(T)/2014 (AA763803)

Available depths as at 3 September 2014:

	<i>Metres</i>	<i>Remarks</i>
Sea Channel	11.5	
* Platypus Channel	11.4	
<i>Outer Harbour:</i>		
Arrival Channel	6.1	
Departure Channel	9.8	
<i>Inner Harbour:</i>		
Harbour	11.3	
<i>Berths:</i>		
No 1	11.6	
* No 2	12.2	
No 3	11.4	
No 4	10.1	
No 7	11.6	
No 8	13.0	
No 9	10.9	
Between No 9 and No 10	7.3	Seaward of 0 mark at No 10
No 10	11.2	
No 11	9.8	
Ross River Channel	2.2	Entrance to beacon No 6
Ross River	-	Upstream of beacon No 6
Ross Creek	-	
* Indicates new or revised entry.		

**Chart temporarily affected - Aus 256 - Aus 257**

**874(T)/2014 AUSTRALIA - QUEENSLAND - Weipa - Dredging operations completed**

*Former Notice - 640(T)/2014 is cancelled*

Maritime Safety Queensland Notice 535(T)/2014 (AA764288)

Cancel this notice on receipt.

**Chart formerly affected - Aus 4**

**875(T)/2014 AUSTRALIA - NORTHERN TERRITORY - Quail Island - Military exercise**

*Date - Until 27 September 2014*

Department of Defence (AA763957)

A 5500m radius exclusion zone exists around position 12° 31'.14 S 130° 26'.13 E. Explosive demolitions will be conducted during the period 25 to 26 September 2014.

**Chart temporarily affected - Aus 29 - Aus 309 - Aus 316 - Aus 722 - AX 00309T - AX 00309U - AX 00722T**

**876(T)/2014 AUSTRALIA - TIMOR SEA - Barracouta Shoal - Drill rig northeastwards***Date* - Until 23 October 2014

Sinopec Oil and Gas Australia Pty Ltd (AA760281), Australian Maritime Safety Authority Auscoast Warning 194/2014 (AA763533)

Drill rig *Stena Clyde* is conducting drilling operations in an area bounded by the following positions:

12° 17'.0 S 124° 16'.0 E

12° 23'.0 S 124° 16'.0 E

12° 23'.0 S 124° 20'.5 E

12° 17'.0 S 124° 20'.5 E.

A 500m prohibited safety zone exists around the drill rig.

**Chart temporarily affected - Aus 314 - Aus 319 - Aus 4721 (INT 721) - Aus 4722 (INT 722) - AX 00314U - AX 00319U - AX 04721U - AX 04722U****877(T)/2014 AUSTRALIA - TIMOR SEA - Sahul Banks - Drill rig moved***Former Notice* - 648(T)/2014 is cancelled

PTTEP Australasia Pty Ltd (AA763715)

Cancel this notice on receipt.

**Chart formerly affected - Aus 314 - Aus 4721 (INT 721) - Aus 4722 (INT 722) - AX 00314U - AX 04721U - AX 04722U****878(T)/2014 AUSTRALIA - WESTERN AUSTRALIA - Barrow Island - Mooring buoys northwestwards***Former Notice* - 703(T)/2014 is cancelled*Date* - Until 30 November 2014

Viking Seatech (AA763833)

8 yellow mooring buoys, *Fl.3s*, exist within 1NM radius of position 20° 32'.8 S 114° 51'.6 E.**Chart temporarily affected - Aus 328****879(T)/2014 AUSTRALIA - WESTERN AUSTRALIA - Barrow Island - Pipeline works westwards completed***Former Notice* - 594(T)/2014 is cancelled

Chevron Australia Pty Ltd (AA764659)

Cancel this notice on receipt.

**Chart formerly affected - Aus 64 - Aus 327 - Aus 328 - Aus 742 - Aus 743 - Aus 744****880(T)/2014 AUSTRALIA - WESTERN AUSTRALIA - Garden Island - Cable operations completed***Former Notice* - 794(T)/2014 is cancelled

Indianic Services Pty Ltd (AA763797)

Cancel this notice on receipt.

**Chart formerly affected - Aus 111 - Aus 117 - AX 00117T****881(T)/2014 AUSTRALIA - WESTERN AUSTRALIA - Glomar Shoal - Drill rig northwestwards***Former Notice* - 706(T)/2014 is cancelledMODU *Nan Hai 6* (AA764441)Drill rig *Nan Hai 6* is conducting drilling operations in position 19° 18'.59 S 116° 33'.69 E.**Chart temporarily affected - Aus 327 - Aus 741 - Aus 4722 (INT 722) - Aus 4723 (INT 723) - AX 04722U - AX 04723U**



**882(T)/2014 AUSTRALIA - WESTERN AUSTRALIA - Glomar Shoal - Mooring buoys northwestwards***Former Notice* - 796(T)/2014 is cancelled*Date* - Until 9 October 2014

Viking Seatech (AA764678), Australian Maritime Safety Authority Auscoast Warning 202/2014 (AA764687)

6 yellow mooring buoys, *Fl.3s*, exist within 1NM radius of position 19° 15'.55 S 116° 38'.27 E.**Chart temporarily affected - Aus 327 - Aus 741****883(T)/2014 AUSTRALIA - WESTERN AUSTRALIA - Learmonth - Obstructions***Date* - Until 24 November 2014

Department of Transport WA Notice 168/2014 (AA763995)

3 obstructions exist close inshore between positions 22° 01'.94 S 114° 06'.98 E and 22° 12'.96 S 114° 06'.26 E. Each obstruction is marked by 4 orange buoys and a lit orange buoy, *Fl.1.5s*.

Mariners are advised to navigate with caution in the area.

**Chart temporarily affected - Aus 329 - Aus 744 - Aus 745****884(T)/2014 AUSTRALIA - WESTERN AUSTRALIA - Montebello Islands - Mooring buoys northwestwards withdrawn***Former Notice* - 709(T)/2014 is cancelled

Viking Seatech (AA764043)

Cancel this notice on receipt.

**Chart formerly affected - Aus 328****885(T)/2014 AUSTRALIA - WESTERN AUSTRALIA - Sahul Banks - Drill rig southwards**MODU *Transocean Legend* (AA762698), Australian Maritime Safety Authority Auscoast Warning 199/2014 (AA763795)Drill rig *Transocean Legend* is conducting drilling operations in position 11° 00'.39 S 126° 41'.98 E.**Chart temporarily affected - Aus 312 - Aus 4721 (INT 721) - AX 00312U - AX 04721U****886(T)/2014 AUSTRALIA - WESTERN AUSTRALIA - Sahul Banks - Mooring buoys***Date* - Until 1 October 2014

Viking Seatech (AA764688)

5 yellow mooring buoys, *Fl.3s*, exist within 1NM radius of position 10° 38'.63 S 126° 11'.02 E.**Chart temporarily affected - Aus 312 - AX 00312U****887(T)/2014 AUSTRALIA - WESTERN AUSTRALIA - Scott Reef - Drill rig northeastwards moved***Former Notice* - 514(T)/2014 is cancelledMODU *Transocean Legend* (AA762698)

Cancel this notice on receipt.

**Chart formerly affected - Aus 322 - Aus 4722 (INT 722) - AX 00322U - AX 04722U****888(T)/2014 AUSTRALIA - WESTERN AUSTRALIA - Seringapatam Reef - Drill rig eastwards moved***Former Notice* - 303(T)/2014 is cancelledMODU *Jack Bates* (AA764129)

Cancel this notice on receipt.

**Chart formerly affected - Aus 322 - Aus 4721 (INT 721) - Aus 4722 (INT 722) - AX 00322U - AX 04721U - AX 04722U**

**889(T)/2014 AUSTRALIA - WESTERN AUSTRALIA - Thevenard Island - Wave gliders westwards***Date* - Until 30 November 2014

Department for Transport WA (AA764384)

Two lit wave gliders, *Fl. Y.3s*, are operating in areas bounded by the following positions:

21° 30'.11 S 114° 53'.36 E

21° 30'.11 S 114° 57'.71 E

21° 22'.45 S 114° 57'.71 E

21° 22'.45 S 114° 53'.36 E

and;

21° 29'.57 S 114° 31'.70 E

21° 29'.57 S 114° 44'.71 E

21° 21'.52 S 114° 44'.71 E

21° 21'.52 S 114° 31'.70 E.

Mariners are advised to navigate with caution in the area.

**Chart temporarily affected - Aus 64 - Aus 743 - Aus 744****890(T)/2014 AUSTRALIA - WESTERN AUSTRALIA - West Moore Island - Drilling operations***Date* - Until 7 February 2015

Department of Transport WA Notice 172/2014 (AA763974)

Drilling operations are in progress between positions 20° 40'.51 S 117° 39'.70 E and 20° 39'.03 S 117° 39'.56 E.

Vessels will display appropriate lights and shapes and will monitor VHF Ch 16.

Mariners are advised to navigate with caution in the area.

**Chart temporarily affected - Aus 740****891(T)/2014 AUSTRALIA - SOUTH AUSTRALIA - Boston Island - Unexploded ordnance**

Department of Defence (AA764630), Department of Planning, Transport and Infrastructure SA Notice 36/2014 (AA764415)

Unexploded ordnance exists in position 34° 41'.83 S 135° 57'.03 E.

Mariners are advised to navigate with caution in the area.

**Chart temporarily affected - Aus 134 - Aus 343 - Aus 776 - AX 00343S - AX 00776S****892(T)/2014 AUSTRALIA - SOUTH AUSTRALIA - Spencer Gulf - Thistle Island - Defence trials completed***Former Notice* - 803(T)/2014 is cancelled

Department of Defence (AA760031)

Cancel this notice on receipt.

**Chart formerly affected - Aus 343 - Aus 485 - Aus 776 - AX 00343S - AX 00776S****893(T)/2014 AUSTRALIA - VICTORIA - Port Phillip - Great Ship Channel - AIS trial completed***Former Notice* - 147(T)/2014 is cancelled

Victorian Notice 151/2014 (AA764366)

Cancel this notice on receipt.

**Chart formerly affected - Aus 143 - Aus 144 - Aus 158**

**894(T)/2014 AUSTRALIA - TASMANIA - Wedge Bay - Marine farm***Date* - Until 31 October 2014

Marine and Safety Tasmania Notice 102/2014 (AA764132, AA764370)

Mariners are advised the marine farm has extended its boundaries and works will be marked by six special light buoys, Q.Y, in an area bounded by the following positions:

43° 06'.88 S 147° 40'.92 E

43° 06'.59 S 147° 40'.71 E

43° 05'.97 S 147° 42'.21 E

43° 06'.26 S 147° 42'.43 E

43° 06'.28 S 147° 41'.44 E

43° 06'.57 S 147° 41'.68 E.

**Chart temporarily affected - Aus 171 - Aus 796**

**HYDROGRAPHIC REPORTS**

Nil Reports

**NAVIGATION WARNINGS**

*The following radio messages have been received during the period to 11 Sep 2014. Signal copies of these messages may be destroyed. It is recommended that the reprint of Navigational Warnings should be kept in a file or a book divided into areas. Cancellation should be made on receipt of signals and reprints.*

*Rigs on location other than those listed in the latest Section III summary are the subject of Radio Navigational Warnings. Rigs in transit will not be the subject of Warnings.*

**AUSCOAST WARNING**

194 Cancelled.  
 195 Drill rig *Atwood Eagle* in position 19° 58'.22 S 115° 12'.76 E. 2.5M clearance requested.  
 196 Cancelled.  
 197 Historic wreck isolated danger light buoy 19° 18'.12 S 147° 36'.98 E missing.  
 198 Cancelled.  
 199 Drill rig *Transocean Legend* in position 11° 00'.40 S 126° 41'.90 E. 2.5M clearance requested.  
 200 Drill rig *Stena Clyde* in position 12° 21'.36 S 124° 17'.57 E. 2.5M clearance requested.  
 201 Cancelled.  
 202 6 x 6m yellow buoys *Fl.3s* established within 1M of position 19° 15'.55 S 116° 38'.27 E.

**NAVAREA X WARNINGS**

053 Cancelled.  
 054 Cancelled.  
 055 Cancelled.

**Navigational warnings in force as at 110001UTC SEP 14.****Auscoast**

**2014** 140 160 180 181 182 191 192 195 197 199 200 202

**Navarea X**

**2014** 049

**Summary of mobile drilling rigs as at 110001UTC SEP 14.**

<i>Name</i>	<i>Position</i>
Transocean Legend	11° 00'.40 S 126° 41'.90 E
Stena Clyde	12° 21'.36 S 124° 17'.57 E
Noble Clyde Boudreaux	13° 49'.00 S 123° 19'.35 E
Deepwater Millennium	16° 20'.80 S 119° 43'.70 E
Nan Hai 6	19° 15'.50 S 116° 38'.30 E
Atwood Osprey	19° 48'.67 S 115° 17'.73 E
Atwood Eagle	19° 58'.22 S 115° 12'.76 E
Ocean America	20° 24'.49 S 114° 50'.95 E
Deepwater Frontier	19° 49'.81 S 114° 34'.13 E
Atwood Falcon	21° 20'.95 S 114° 04'.40 E

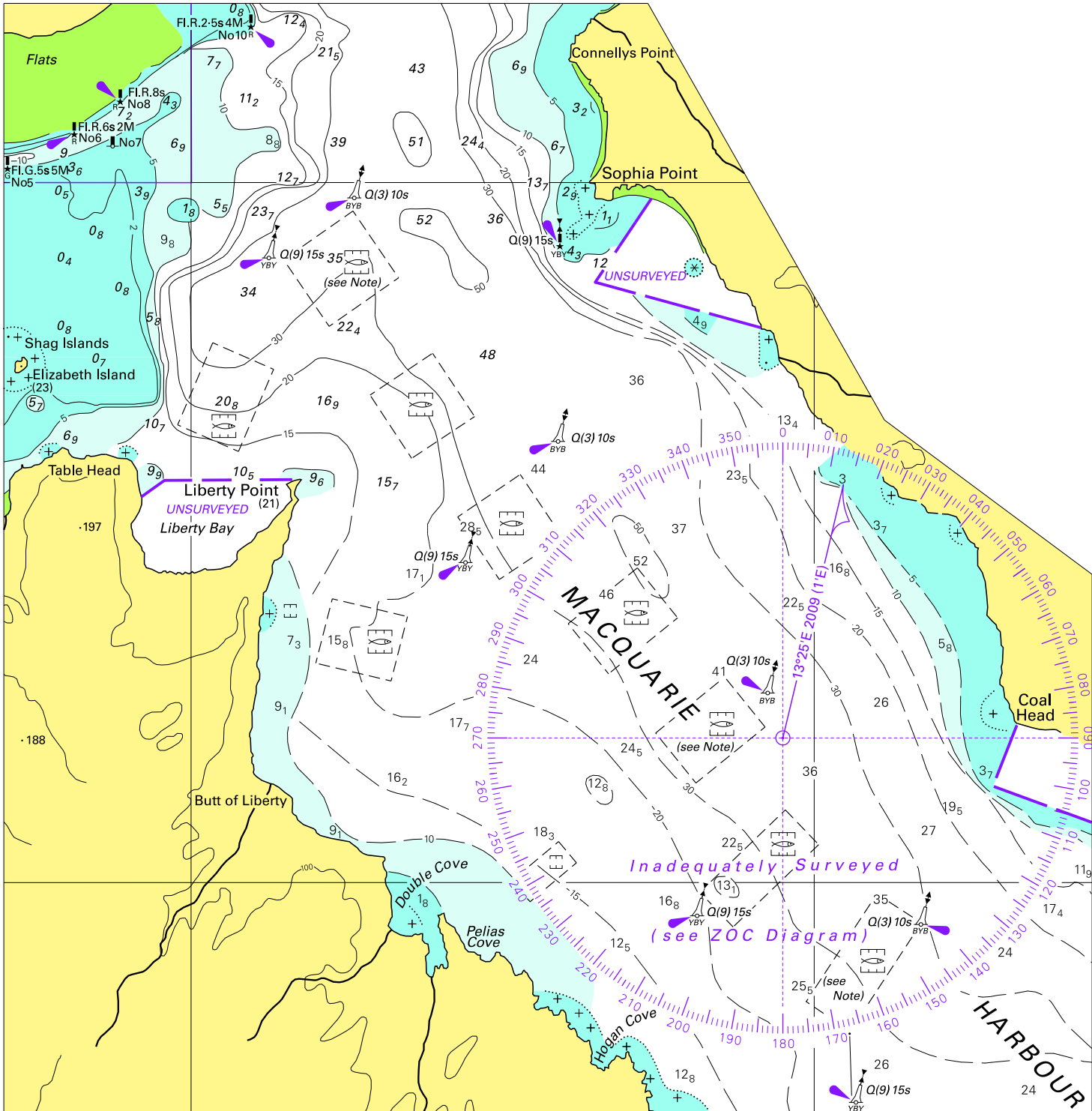
**NAVAREA XIV WARNINGS**

Nil.

**Navarea XIV warnings in force as at 110001UTC SEP 14.**

**2014** Nil.

*To accompany Australian Notice to Mariners 858/2014*

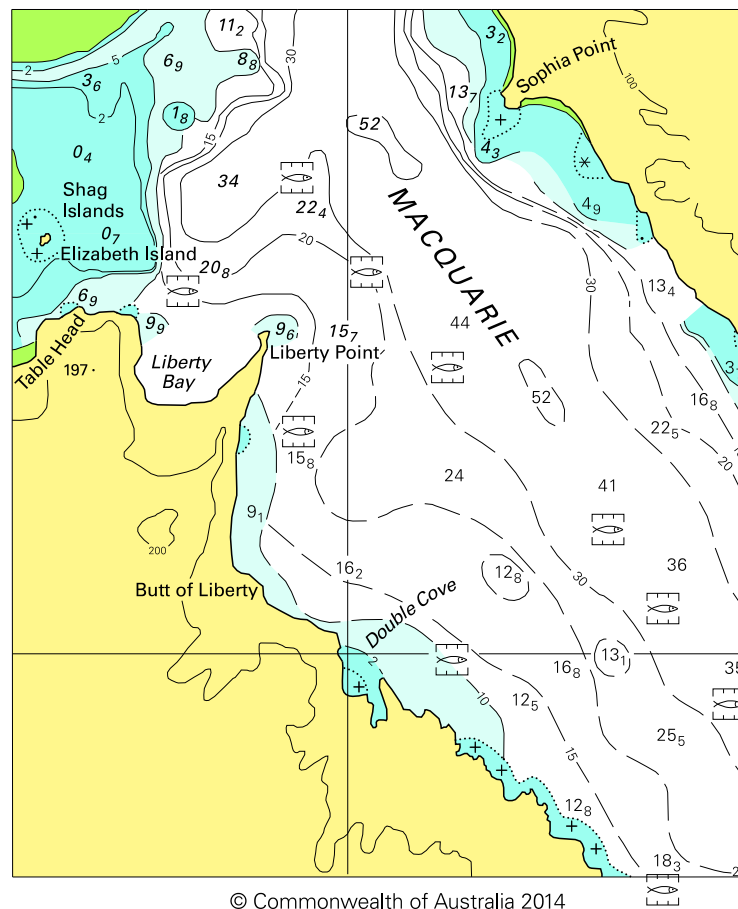


Block for Chart Aus 177

© Commonwealth of Australia 2014

(195.8 × 192.0 mm)

To accompany Australian Notice to Mariners 858/2014



© Commonwealth of Australia 2014

Block for Chart Aus 792

(114.7 x 97.2 mm)

© Commonwealth of Australia 2014  
Block for chart Aus 168 (67.1 x 47.6mm)