



15 August 2014

Edition 16

Australian Notices to Mariners are the authority for correcting Australian Charts and Publications

AUSTRALIAN NOTICES TO MARINERS

Notices 764 - 804



Published fortnightly by the Australian Hydrographic Service

Commodore B.K. BRACE RAN
Hydrographer of Australia

SECTIONS.

- I. Australian Notices to Mariners, including blocks and notes.
- II. Hydrographic Reports.
- III. Navigational Warnings.

SUPPLEMENTS.

- I. Tracings
- II. Cumulative List of Australian Notices to Mariners.
- III. Cumulative List of Temporary and Preliminary Australian Notices to Mariners.
- IV. Temporary and Preliminary Notices in force.
- V. Amendments to Admiralty List of Lights and Fog Signals (Vol K), Radio Signals (NP 281(2), 282, 283(2), 285, 286(4)) and Sailing Directions (NP 9, 13, 14, 15, 33, 34, 35, 36, 39, 44, 51, 60, 61, 62, 100, 136).

© Commonwealth of Australia 2014

This work is copyright. Apart from any use permitted under the Copyright Act 1968, no part may be reproduced by any process, adapted, communicated or commercially exploited without prior written permission from The Commonwealth represented by the Australian Hydrographic Service.

IMPORTANT NOTICE

This edition of Notices to Mariners includes all significant information affecting AHS products which the AHS has become aware of since the last edition. All reasonable efforts have been made to ensure the accuracy and completeness of the information, including third party information, on which these updates are based. The AHS regards third parties from which it receives information as reliable, however the AHS cannot verify all such information and errors may therefore exist. The AHS does not accept liability for errors in third party information.

GENERAL INSTRUCTIONS

The substance of these notices should be inserted on the charts affected.

Bearings are referred to the true compass and are reckoned clockwise from North; those relating to lights are given as seen by an observer from seaward. Positions quoted in permanent notices relate to the horizontal datum for the chart(s). When preliminary or temporary notices affect multiple charts, positions will be provided in relation to only one horizontal datum and that datum will be specified. When the multiple charts do not have a common horizontal datum, mariners will be required to adjust the position(s) for those charts not on the specified datum. The range quoted for a light is its nominal range. Depths are with reference to the chart datum of each chart. Heights are above mean high water springs or mean higher high water, as appropriate.

The capital letter (P) or (T) after the number of any notice denotes a preliminary or temporary notice respectively, which are contained separately at the end of the permanent notices. A star (*) adjacent to the number of a notice indicates that the notice is based on original information.

REPORTING OF DANGERS

Mariners are particularly requested to notify the AUSTRALIAN HYDROGRAPHIC SERVICE, Locked Bag 8801 Wollongong, NSW 2500 (Fax 02-4223 6599, e-mail Hydro.NTM@defence.gov.au or, alternatively by filling in and submitting the [Hydrographic Notes](#) forms located on the web site – www.hydro.gov.au), immediately on the discovery of new dangers or suspected dangers to navigation. For changes or defects in aids to navigation notify AusSAR (Fax 02-6230 6868 or email rccaus@amsa.gov.au).

AUTHORISED USE

Copies of Australian notices are available free of charge from the Australian Hydrographic Service (AHS) website (www.hydro.gov.au) and through the eNotices (email) service (www.hydro.gov.au/enotices/enotices.htm).

Individual Notices may be copied for the purpose of inserting Notice substance on official charts and publications. Paper copies may be printed by chart agents and distributed to customers on a cost recovery basis. Participating chart agents are listed on the AHS website as providing a 'Paper Notices to Mariners' service (www.hydro.gov.au/prodserv/distributors/distributors.htm). Copies of the notices may not be sold for profit without prior written agreement.

NUMERICAL INDEX OF NOTICES TO MARINERS

Edition No 16

Notices	Aus Chart, INT Chart, ENC Cell, AHP, BA Pubs
764	Aus 244, 258, 262, 270, 280, 281, 830, 831, 832, 833
765	Aus 204, 217, AX 00215T
766	Aus 237, 238
767	Aus 828
768	Aus 814
769	Aus 648
770	Aus 397, 399, 684
771	Aus 26, 722, AX 00026T, 00722T
772	Aus 334, 335, 755, AX 00334S, 00755S, AXA 0754S
773	Aus 81
774	Aus 733
775	Aus 74, 748, 749
776	Aus 127
777	Aus 181, 182
778	Aus 143, 155
779(T)	Aus 204, 217, AX 00215T
780(T)	Aus 207, 208
781(T)	Aus 238
782(T)	Aus 262, 263, AX 00262T
783(T)	Aus 250
784(T)	Aus 235, 236, 237, 238, 814, 815
785(T)	Aus 236
786(T)	Aus 235, 815
787(T)	Aus 270
788(T)	Aus 256, 257
789(T)	Aus 24, 27, 28
790(T)	Aus 26, 28, AX 00026T
791(T)	Aus 328
792(T)	Aus 327, 741
793(T)	Aus 119
794(T)	Aus 111, 117, AX 00117T
795(T)	Aus 327, 741
796(T)	Aus 327, 741
797(T)	Aus 328, 4723, INT 723, AX 04723U
798(T)	Aus 327, 328
799(T)	Aus 328
800(T)	Aus 327, 328, 329, 4603, INT 603, AX 04603U
801(T)	Aus 4708, 4723, INT 708, 723, AX 04708U, 04723U
802(T)	Aus 127
803(T)	Aus 343, 485, 776, AX 00343S, 00776S
804(T)	Aus 154

NUMERICAL INDEX OF CHARTS AFFECTED

Edition No 16

Aus Chart	Notices
Aus 24	789(T)
Aus 26	771, 790(T)
Aus 27	789(T)
Aus 28	789(T), 790(T)
Aus 74	775
Aus 81	773
Aus 111	794(T)
Aus 117	794(T)
Aus 119	793(T)
Aus 127	776, 802(T)
Aus 143	778
Aus 154	804(T)
Aus 155	778
Aus 181	777
Aus 182	777
Aus 204	765, 779(T)
Aus 207	780(T)
Aus 208	780(T)
Aus 217	765, 779(T)
Aus 235	784(T), 786(T)
Aus 236	784(T), 785(T)
Aus 237	766, 784(T)
Aus 238	766, 781(T), 784(T)
Aus 244	764
Aus 250	783(T)
Aus 256	788(T)
Aus 257	788(T)
Aus 258	764
Aus 262	764, 782(T)
Aus 263	782(T)
Aus 270	764, 787(T)
Aus 280	764
Aus 281	764
Aus 327	792(T), 795(T), 796(T), 798(T), 800(T)
Aus 328	791(T), 797(T), 798(T), 799(T), 800(T)
Aus 329	800(T)
Aus 334	772
Aus 335	772
Aus 343	803(T)
Aus 397	770
Aus 399	770
Aus 485	803(T)
Aus 648	769
Aus 684	770
Aus 722	771
Aus 733	774
Aus 741	792(T), 795(T), 796(T)
Aus 748	775
Aus 749	775
Aus 755	772
Aus 776	803(T)
Aus 814	768, 784(T)
Aus 815	784(T), 786(T)
Aus 828	767

Aus Chart	Notices
Aus 830	764
Aus 831	764
Aus 832	764
Aus 833	764
Aus 4603	800(T)
Aus 4708	801(T)
Aus 4723	797(T), 801(T)
AX 00026T	771, 790(T)
AX 00117T	794(T)
AX 00215T	765, 779(T)
AX 00262T	782(T)
AX 00334S	772
AX 00343S	803(T)
AX 00722T	771
AX 00755S	772
AX 00776S	803(T)
AX 04603U	800(T)
AX 04708U	801(T)
AX 04723U	797(T), 801(T)
AXA 0754S	772

INT Chart	Notices
INT 603	800(T)
INT 708	801(T)
INT 723	797(T), 801(T)

764 AUSTRALIA - Product**New edition to be published shortly**

<i>Chart</i>	<i>Title</i>	<i>Scale</i>	<i>Expected Publication Date</i>
Aus 244	Australia - East Coast - Queensland - Plans in Port of Gladstone Plans: Entrance to North Channel Gladstone and Adjacent Wharves Fishermans Landing Wharves South Trees Point	 1:15 000 1:10 000 1:10 000 1:7 500	29 August 2014
Aus 280	Australia - East Coast - Queensland - Plans in Queensland (Sheet 3) Plans: Maggie Reef to Eden Reef Flinders Group	 1:75 000 1:50 000	29 August 2014
Aus 831	Australia - East Coast - Queensland - Low Islets to Cape Flattery	1:150 000	29 August 2014
Aus 832	Australia - East Coast - Queensland - Cape Flattery to Barrow Point	1:150 000	29 August 2014
Aus 833	Australia - East Coast - Queensland - Barrow Point to Clarement Isles	1:150 000	29 August 2014

Chart permanently withdrawn

<i>Chart</i>	<i>On publication of new edition</i>
Aus 258	Aus 258
Aus 262	Aus 262
Aus 270	Aus 270
Aus 281	Aus 281
Aus 830	Aus 830

For further details refer to the AHS website at www.hydro.gov.au for new edition and new chart stock arrival information.

When placing orders with a chart agent, mariners should advise whether their order pertains to the current edition or the new edition.

765* AUSTRALIA - NEW SOUTH WALES - Hawkesbury River - Nav aids
Hornsby Shire Council (AA757965)

Aus 204 [718/2014]

Insert	special cylindrical light buoy, <i>Fl. Y. 5s</i> , with topmark	33° 28'.35 S	151° 08'.01 E
	special cylindrical light buoy, <i>Fl. Y. 5s</i> , with topmark	33° 34'.08 S	151° 14'.48 E
	special cylindrical light buoy, <i>Fl. Y. 5s</i> , with topmark	33° 31'.68 S	151° 08'.51 E
	special spar buoy, without topmark	33° 32'.70 S	151° 14'.42 E
	special spar buoy, without topmark	33° 32'.59 S	151° 13'.83 E

Amend	light buoy to <i>Fl. Y. 5s</i>	33° 35'.2 S	151° 07'.2 E
-------	--------------------------------	-------------	--------------

Aus 217 [718/2014]

Insert	special cylindrical light buoy, <i>Fl. Y. 5s</i> , with topmark	33° 34'.076 S	151° 14'.476 E
	special spar buoy, without topmark	33° 32'.781 S	151° 14'.323 E
	special spar buoy, without topmark	33° 32'.633 S	151° 14'.426 E
	special spar buoy, without topmark	33° 32'.704 S	151° 14'.415 E
	special spar buoy, without topmark	33° 32'.777 S	151° 14'.402 E
	special spar buoy, without topmark	33° 32'.840 S	151° 14'.394 E
	special spar buoy, without topmark	33° 32'.573 S	151° 14'.340 E
	special spar buoy, without topmark	33° 32'.557 S	151° 14'.440 E
	special spar buoy, without topmark	33° 32'.633 S	151° 14'.251 E
	special spar buoy, without topmark	33° 32'.705 S	151° 14'.274 E
	special spar buoy, without topmark	33° 32'.642 S	151° 13'.887 E
	special spar buoy, without topmark	33° 32'.587 S	151° 13'.829 E

AX 00215T [NE 15/6/2012]

Insert	special cylindrical light buoy, <i>Fl. Y. 5s</i> , with topmark	33° 34'.076 S	151° 14'.476 E
	special spar buoy, without topmark	33° 32'.781 S	151° 14'.323 E
	special spar buoy, without topmark	33° 32'.633 S	151° 14'.426 E
	special spar buoy, without topmark	33° 32'.704 S	151° 14'.415 E
	special spar buoy, without topmark	33° 32'.777 S	151° 14'.402 E
	special spar buoy, without topmark	33° 32'.840 S	151° 14'.394 E
	special spar buoy, without topmark	33° 32'.573 S	151° 14'.340 E
	special spar buoy, without topmark	33° 32'.557 S	151° 14'.440 E
	special spar buoy, without topmark	33° 32'.633 S	151° 14'.251 E
	special spar buoy, without topmark	33° 32'.705 S	151° 14'.274 E
	special spar buoy, without topmark	33° 32'.642 S	151° 13'.887 E
	special spar buoy, without topmark	33° 32'.587 S	151° 13'.829 E

766* AUSTRALIA - QUEENSLAND - Brisbane River - Luggage Point to Upper Lytton Reach - Infrastructure
Maritime Safety Queensland Notice 437/2014 (AA756665, AA756927)

Aus 237 [111/2014]

Insert	accompanying block	27° 22'.9 S	153° 09'.4 E
--------	--------------------	-------------	--------------

Aus 238 [315/2014]

Amend	legend to <i>Viva Energy Wharf</i>	27° 25'.39 S	153° 07'.77 E
-------	------------------------------------	--------------	---------------

767* AUSTRALIA - QUEENSLAND - Pith Reef - Pilot boarding place
W Conlin (AA755175)

Aus 828 [NE 4/7/2014]

Delete	pilot boarding place with legend, Pith Reef	18° 13'.0 S	147° 07'.0 E
--------	---	-------------	--------------

768* AUSTRALIA - QUEENSLAND - Point Lookout - Light buoy southeastwards
Maritime Safety Queensland Notice 459(T)/2014 (AA757866)

Aus 814 [209/2014]

Move	light buoy	27° 28'.4 S	153° 37'.6 E
	to	27° 29'.23 S	153° 37'.90 E

769* PAPUA NEW GUINEA - Caution Bay - Mooring buoy
National Maritime Safety Authority PNG Notice 30/2014 (AA757239, AA757806)

Aus 648 [NC 13/12/2013]

Move	mooring buoy to	9° 20'.58 S	146° 59'.35 E
		9° 20'.80 S	146° 59'.28 E
Delete	depth, 14 ₆ m	9° 20'.77 S	146° 59'.27 E

770* PAPUA NEW GUINEA - Madehas Island - Depths
HMAS *Benalla* and HMAS *Shepparton* (DHDB 2664068)

Aus 397 [1201/2013]

Insert	depth, 0 ₃ m, enclosed by contour	5° 28'.69 S	154° 36'.03 E
Delete	depth, 4 ₄ m, and enclosing contour	5° 28'.8 S	154° 36'.0 E

Aus 399 [248/2014]

Insert	depth, 0 ₃ m, enclosed by contour	5° 28'.69 S	154° 36'.03 E
Delete	depth, 4 ₄ m, and enclosing contour	5° 28'.8 S	154° 36'.0 E

Aus 684 (inset, Approaches to Queen Carola Harbour) [322/2014]

Insert	depth, 0 ₃ m, enclosed by contour	5° 28'.69 S	154° 36'.03 E
Delete	depth, 4 ₄ m, and enclosing contour	5° 28'.8 S	154° 36'.0 E

Aus 684 (plan, Buka Passage) [322/2014]

Insert	depth, 6 ₇ m, enclosed by contour	5° 28'.020 S	154° 37'.153 E
	depth, 0 ₆ m, enclosed by contour	5° 28'.518 S	154° 35'.937 E
	depth, 0 ₃ m, enclosed by contour	5° 28'.687 S	154° 36'.029 E

771* AUSTRALIA - NORTHERN TERRITORY - Darwin - Middle Pass - Depths; deepwater route
Darwin Port Corporation (DHDB 2687858)

Aus 26 [725/2014]

Insert	accompanying block	12° 21'.0 S	130° 43'.0 E
--------	--------------------	-------------	--------------

Aus 722 [362/2014]

Insert	accompanying block	12° 21'.0 S	130° 43'.0 E
--------	--------------------	-------------	--------------

AX 00026T [725/2014]

Insert	accompanying block	12° 21'.0 S	130° 43'.0 E
--------	--------------------	-------------	--------------

AX 00722T [362/2014]

Insert	accompanying block	12° 21'.0 S	130° 43'.0 E
--------	--------------------	-------------	--------------

772* AUSTRALIA - WESTERN AUSTRALIA - Cape Bouvard to Naturaliste Reef - Marine farms
 Department of Fisheries WA (DHDB 2683982)

Aus 334 [567/2014]

Insert	dashed line and marine farm symbol with legend, (see <i>Note</i>), between	32° 38'.53 S	115° 19'.29 E
		32° 40'.73 S	115° 14'.09 E
		32° 41'.93 S	115° 14'.49 E
		32° 39'.93 S	115° 20'.09 E
		32° 38'.53 S	115° 19'.29 E
		33° 03'.33 S	115° 00'.09 E
		33° 09'.13 S	114° 57'.89 E
		33° 09'.73 S	115° 00'.09 E
		33° 03'.93 S	115° 02'.29 E
		33° 03'.33 S	115° 00'.09 E
	accompanying note	31° 32'.0 S	115° 55'.0 E

Aus 335 [449/2013]

Insert	accompanying note	34° 07'.0 S	115° 56'.0 E
		33° 04'.74 S	114° 59'.51 E
		33° 09'.13 S	114° 57'.89 E
		33° 09'.73 S	115° 00'.09 E
		33° 04'.74 S	115° 01'.94 E

Aus 755 [625/2014]

Insert	accompanying note	33° 36'.0 S	115° 39'.0 E
		32° 38'.53 S	115° 19'.29 E
		32° 40'.73 S	115° 14'.09 E
		32° 41'.93 S	115° 14'.49 E
		32° 39'.93 S	115° 20'.09 E
		32° 38'.53 S	115° 19'.29 E
		33° 03'.33 S	115° 00'.09 E
		33° 09'.13 S	114° 57'.89 E
		33° 09'.73 S	115° 00'.09 E
		33° 03'.93 S	115° 02'.29 E
		33° 03'.33 S	115° 00'.09 E

AX 00334S [567/2014]

Insert	dashed line and marine farm symbol with legend, (see <i>Note</i>), between	32° 38'.53 S	115° 19'.29 E
		32° 40'.73 S	115° 14'.09 E
		32° 41'.93 S	115° 14'.49 E
		32° 39'.93 S	115° 20'.09 E
		32° 38'.53 S	115° 19'.29 E
		33° 03'.33 S	115° 00'.09 E
		33° 09'.13 S	114° 57'.89 E
		33° 09'.73 S	115° 00'.09 E
		33° 03'.93 S	115° 02'.29 E
		33° 03'.33 S	115° 00'.09 E
	accompanying note	31° 32'.0 S	115° 55'.0 E

AX 00755S [625/2014]

Insert	accompanying note	33° 36'.0 S	115° 39'.0 E
		32° 38'.53 S	115° 19'.29 E
		32° 40'.73 S	115° 14'.09 E
		32° 41'.93 S	115° 14'.49 E
		32° 39'.93 S	115° 20'.09 E
		32° 38'.53 S	115° 19'.29 E
		33° 03'.33 S	115° 00'.09 E
		33° 09'.13 S	114° 57'.89 E
		33° 09'.73 S	115° 00'.09 E
		33° 03'.93 S	115° 02'.29 E
		33° 03'.33 S	115° 00'.09 E

AXA 0754S [625/2014]

Insert	dashed line and marine farm symbol with legend, (see <i>Note</i>), between	32° 39'.80 S	115° 16'.32 E
		32° 38'.53 S	115° 19'.29 E
		32° 39'.80 S	115° 19'.99 E
		31° 21'.3 S	115° 48'.0 E

773* AUSTRALIA - WESTERN AUSTRALIA - Geraldton - Point Moore - Light
UKHO (AA758246)

Aus 81 [624/2014]

Amend light range to 19M

28° 46'.96 S 114° 34'.76 E

774* AUSTRALIA - WESTERN AUSTRALIA - King Sound - Cygnet Bay to Cascade Bay - Pearl cultures
Department of Fisheries WA (DHDB 2683982)

Aus 733 [1087/2013]

Insert magenta dashed line, between

16° 30'.25 S 123° 05'.00 E

16° 30'.80 S 123° 04'.50 E

16° 30'.80 S 123° 05'.40 E

16° 30'.70 S 123° 05'.48 E

magenta dashed line, between

16° 30'.07 S 123° 06'.00 E

16° 29'.70 S 123° 06'.30 E

16° 29'.70 S 123° 06'.00 E

Delete pearl culture, centred on

16° 33'.5 S 123° 29'.5 E

pearl culture, centred on

16° 33'.8 S 123° 28'.8 E

pearl culture, centred on

16° 34'.0 S 123° 29'.1 E

pearl culture, centred on

16° 34'.8 S 123° 29'.2 E

pearl culture, centred on

16° 34'.9 S 123° 27'.8 E

pearl culture, centred on

16° 36'.4 S 123° 27'.4 E

pearl culture, centred on

16° 36'.0 S 123° 28'.0 E

pearl culture, centred on

16° 36'.1 S 123° 29'.0 E

pearl culture, centred on

16° 34'.4 S 123° 31'.4 E

legend, Pearl Culture (see Note)

16° 34'.8 S 123° 27'.0 E

legend, Pearl Culture (see Note)

16° 35'.5 S 123° 33'.0 E

magenta dashed line, between

16° 30'.3 S 123° 05'.0 E

16° 30'.7 S 123° 05'.0 E

16° 30'.7 S 123° 05'.5 E

magenta dashed line, between

16° 30'.1 S 123° 06'.0 E

16° 29'.7 S 123° 06'.0 E

legend, Pearl Culture (see Note)

16° 35'.2 S 123° 00'.0 E

775* AUSTRALIA - WESTERN AUSTRALIA - Useless Loop - Light; legend
Shark Bay Resources (AA757943)

Aus 74 [680/2014]

Delete light with legend, WATER TOWER

26° 08'.4 S 113° 25'.4 E

Aus 748 [729/2014]

Delete light with legend, WATER TOWER

26° 08'.4 S 113° 25'.4 E

Aus 749 [729/2014]

Delete light with legend, WATER TOWER

26° 08'.4 S 113° 25'.4 E

776* AUSTRALIA - SOUTH AUSTRALIA - Cape Jaffa - Light; jetty; scale
Department of Planning, Transport and Infrastructure SA (AA756998)

Aus 127 (plan, Cape Jaffa Marina) [122/2014]

Insert continuous line, between

36° 56'.419 S 139° 41'.292 E

36° 56'.376 S 139° 41'.273 E

Amend scale to 1:15 000

36° 56'.68 S 139° 41'.43 E

Move light
to

36° 56'.39 S 139° 41'.26 E

36° 56'.376 S 139° 41'.273 E

Delete continuous line, between

36° 56'.42 S 139° 41'.29 E

36° 56'.39 S 139° 41'.26 E

777* AUSTRALIA - VICTORIA - Port Albert - Depths

Former Notice - 759(P)/2014 is cancelled
 Gippsland Ports (DHDB 2691566)

Aus 181 [494/2014]

Insert	accompanying block	38° 44'.7 S	146° 41'.7 E
--------	--------------------	-------------	--------------

Aus 182 (plan, Approaches to Port Albert) [733/2014]

Insert	accompanying block	38° 44'.7 S	146° 41'.7 E
--------	--------------------	-------------	--------------

778* AUSTRALIA - VICTORIA - Port Phillip - Point Gellibrand - Depths southwards

Port of Melbourne Corporation (DHDB 2704351)

Aus 143 [687/2014]

Insert	depth, 10m, enclosed by contour	37° 53'.11 S	144° 54'.68 E
--------	---------------------------------	--------------	---------------

Aus 155 [NE 20/6/2014]

Insert	depth, 10m, enclosed by contour	37° 53'.108 S	144° 54'.684 E
	depth, 11 ₁ m	37° 53'.917 S	144° 54'.276 E
	depth, 11 ₃ m	37° 54'.497 S	144° 54'.726 E

Delete	depth, 11m	37° 53'.10 S	144° 54'.65 E
	depth, 12 ₅ m	37° 53'.87 S	144° 54'.12 E
	depth, 11 ₉ m	37° 54'.27 S	144° 54'.71 E

779(T)/2014 AUSTRALIA - NEW SOUTH WALES - Hawkesbury River - Mullet Creek - Light buoy

Date - Until 31 July 2015

Hornsby Shire Council (AA757965)

A special cylindrical light buoy, *Fl. Y. 5s*, exists in position 33° 31'.65 S 151° 14'.16 E.**Chart temporarily affected - Aus 204 - Aus 217 - AX 00215T****780(T)/2014 AUSTRALIA - NEW SOUTH WALES - Newcastle - Depth information**

Former Notice - 688(T)/2014 is cancelled

Newcastle Port Corporation (AA759042)

Available depths as at 31 July 2014:

<i>Berth</i>	<i>Metres</i>	<i>Remarks</i>
Eastern Basin 1	11.4	
Eastern Basin 2 North of Ch 450	11.6	
Eastern Basin 2 South of Ch 450	11.5	
Western Basin 3	11.6	
Western Basin 4	11.6	
Channel Berth	9.7	
Dyke 1	12.8	
Dyke 2	12.8	
Dyke 4	16.2	
Dyke 5	16.0	
Dyke 6	5.3	
Mayfield 4 Ch 27 to 266	12.7	
BHP Wharf 6 to Ch 1050	7.6	
Kooragang 2	11.6	
Kooragang 2 North Dolphin Ch 182 to 243	11.6	
Kooragang 2 South Dolphin Ch -92 to 00	11.5	
Kooragang 3 Ch -40 to 00	12.6	
Kooragang 3 Ch 00 to 220	13.2	
Kooragang 4	16.5	
Kooragang 5	16.5	
Kooragang 6	16.3	
Kooragang 7	16.3	
Kooragang 8	16.2	
Kooragang 9	16.3	
Kooragang 10	15.9	
Throsby 1 Ch 850 to 1030	8.9	
Carrington Wharf		To be sounded as and when required
Foreshore Park Berth	5.9	
Elgo Wharf		To be sounded as and when required
<i>Channels</i>		
Entrance Approach	17.7	
Entrance Channel (18.0m)	17.8	
Entrance Channel (17.4m)	17.4	
Entrance Channel (16.8m)	16.8	
Entrance Channel (16.2m)	16.2	
Entrance Channel to Horseshoe	15.2	
Horseshoe	15.2	
Steelworks Channel to Swinging Basin	15.1	
* Swinging Basin	15.2	
* Hunter River South Arm (Kooragang 6 to buoy 18)	15.1	
* Hunter River South Arm (buoy 18 to buoy 20)	14.8	
Basin Cutting	12.6	
Basin Area to Eastern & Western Basin Berths	12.3	
Basin Area to 1 Throsby	9.4	
Stockton Crossing	3.6	
* Indicates new or revised entry.		

Chart temporarily affected - Aus 207 - Aus 208

781(T)/2014 AUSTRALIA - QUEENSLAND - Brisbane River - Bulimba Reach - Harbour works

Date - Until 30 November 2014

Maritime Safety Queensland Notice 474(T)/2014 (AA759595)

Harbour works associated with the upgrade of the City Cat terminal are in progress in the vicinity of position 27° 27'.28 S 153° 03'.19 E. The area will be marked by special buoys.

Barges *Pandala* and *Kochi* and tugs are on site and will monitor VHF Ch 13. Barges will deploy anchors marked by special buoys.

Mariners are advised to navigate with caution in the area.

Chart temporarily affected - Aus 238

782(T)/2014 AUSTRALIA - QUEENSLAND - Cairns - Light beacon unlit

Maritime Safety Queensland Notice 472(T)/2014 (AA759608)

C17 light beacon, *Fl.G.4s* (16° 53'.98 S 145° 47'.47 E), is unlit.

Chart temporarily affected - Aus 262 - Aus 263 - AX 00262T

783(T)/2014 AUSTRALIA - QUEENSLAND - Mackay - Depth information

Former Notice - 1159(T)/2013 is cancelled

Maritime Safety Queensland Notice 467(T)/2014 (AA759443)

Available depths as at 31 July 2014:

<i>Remarks</i>	<i>Metres</i>
* Entrance Channel	8.3
Swing Basin	8.5
* Berth No 1	11.1
* Berth No 3	12.9
* Berth No 3 & 4 composite	12.9
* Berth No 4	11.0
* Berth No 5	12.2
* Indicates revised entry.	

Chart temporarily affected - Aus 250

784(T)/2014 AUSTRALIA - QUEENSLAND - Moreton Bay - Brisbane River - Depth information

Former Notice - 738(T)/2014 is cancelled

Brisbane Port Corporation (AA759589)

Available depths and under keel clearances (UKC) at 8 August 2014:

<i>Berth</i>	<i>Metres</i>	<i>Remarks</i>
* Fisherman Islands No12	13.9	
* Fisherman Islands No11	14.0	
Fisherman Islands No10	14.0	
* Fisherman Islands No9	13.9	
* Fisherman Islands No8	14.0	
Fisherman Islands No7	13.9	
Fisherman Islands No6	13.7	
* Fisherman Islands No5	13.7	
Fisherman Islands No4	14.0	
Fisherman Islands No3	13.9	
* Fisherman Islands No2	14.2	
Fisherman Islands No1	14.0	
Fisherman Islands Grain and Woodchip	13.0	
Caltex Fisherman Islands	14.1	
Fisherman Islands Coal	14.0	
Fisherman Islands General Purpose	11.5	
* Luggage Point Pump Out Facility	13.6	
* BP Luggage Point	14.3	
Caltex Products	10.1	
Cement Australia Co Wharf	9.8	
BP Products	11.1	
Viva Energy	10.9	
* Graincorp Liquid Terminal	10.3	
* Incitec North	9.7	
* Incitec South	10.2	
* Pinkenba 1	9.7	
Pinkenba 2	10.4	
Riverside Marina	-	
Sugar Terminal	9.7	
Cairncross Fitting Out Wharf	7.1	
Cairncross Breasting Wharf	4.4	
Brisbane Naval Wharf	4.3	
* Maritime No1	8.6	
* Hamilton No4	9.1	
Hamilton No1	8.7	
* Brisbane Cruise Ship Terminal	8.4	

	<i>Metres</i>	<i>UKC/Remarks</i>
<i>Moreton Bay:</i>		
North West Channel	15.0	2.3 (280m width)
North West Bypass Channel	9.2	1.6
Spitfire Channel	15.0	1.5 (600m width)
East Knoll Bypass Channel	6.0	1.4
East Channel	15.0	1.5 (300m width from western side)
Main Channel (M8 - M9)	10.0	1.8
Entrance Channel (E5 - EBCN)	14.7	1.5
<i>Brisbane River:</i>		
Outer Bar Cutting	14.0	1.46
Inner Bar Cutting	14.0	1.46
Fisherman Islands Swing Basin	14.0	1.3
Fisherman Islands Swing Basin (11.5)	11.3	0.6
River	9.1	0.6 / 0.9 (draft/tide)
Cement Australia Swing Basin	9.1	0.6 / 0.9 (draft/tide)
* Pinkenba Swing Basin	9.1	0.6 / 0.9 (draft/tide)
Hamilton Swing Basin	8.9	0.6 / 0.9 (draft/tide)
* Indicates new or revised entry.		

Chart temporarily affected - Aus 235 - Aus 236 - Aus 237 - Aus 238 - Aus 814 - Aus 815

785(T)/2014 AUSTRALIA - QUEENSLAND - Moreton Bay - Rous Channel - Shoaling

Maritime Safety Queensland Notice 476(T)/2014 (AA759701)

Shoaling (depths less than 0.5m) exists within Rous Channel between No1 light buoy (27° 22'.74 S 153° 25'.89 E) and No9 light buoy (27° 23'.09 S 153° 23'.91 E).

Mariners are advised to navigate with caution in the area.

Chart temporarily affected - Aus 236

786(T)/2014 AUSTRALIA - QUEENSLAND - Moreton Bay - North West Channel - Scientific instruments

Date - Until 28 July 2015

Maritime Safety Queensland Notice 418(T)/2014 (AA760189)

Subsurface scientific instruments exist on the seabed in positions 26° 53'.14 S 153° 10'.55 E and 26° 52'.98 S 153° 10'.47 E.

Chart temporarily affected - Aus 235 - Aus 815

787(T)/2014 AUSTRALIA - QUEENSLAND - Port Douglas - Obstruction removed

Former Notice - 694(T)/2014 is cancelled

Maritime Safety Queensland Notice 477/2014 (AA759702)

Cancel this notice on receipt.

Chart formerly affected - Aus 270

788(T)/2014 AUSTRALIA - QUEENSLAND - Townsville - Depth information

Former Notice - 745(T)/2014 is cancelled

Maritime Safety Queensland Notice 469(T)/2014 (AA759447)

Available depths as at 1 August 2014:

	<i>Metres</i>	<i>Remarks</i>
Sea Channel	11.5	
* Platypus Channel	11.0	
<i>Outer Harbour:</i>		
Arrival Channel	6.1	
Departure Channel	9.8	
<i>Inner Harbour:</i>		
Harbour	11.3	
<i>Berths:</i>		
No 1	11.6	
No 2	11.8	
No 3	11.4	
No 4	10.1	
No 7	11.6	
No 8	13.0	
No 9	10.9	
Between No 9 and No 10	7.3	Seaward of 0 mark at No 10
No 10	11.2	
No 11	9.8	
Ross River Channel	2.2	Entrance to beacon No 6
Ross River	-	Upstream of beacon No 6
Ross Creek	-	
* Indicates new or revised entry.		

Chart temporarily affected - Aus 256 - Aus 257

789(T)/2014 AUSTRALIA - NORTHERN TERRITORY - Darwin - Depth information*Former Notice - 1004(T)/2012 is cancelled*

Darwin Port Corporation Notice 114/2012 (AA759161)

Available depths as at 6 August 2014:

<i>Berths</i>	<i>Metres</i>
* DLNG	14.2 (12.1 in Turning Basin)
* East Arm 0-100m	10.5
* East Arm 100-200m	12.0
* East Arm 200-300m	12.5
* East Arm 300-400m	12.5
* East Arm 400-500m	11.8
* East Arm 500-600m	13.5
* East Arm 600-700m	11.7
* Bulk Solids Wharf	12.5
* Bulk Liquids Wharf 600-700m	11.7
* Bulk Liquids Wharf 700-800m	11.5
* Bulk Liquids Wharf 800-865m	11.4
* No 2 Fort Hill East	10.3
* No 2 Fort Hill West	10.6
* No 3 Stokes Hill East	4.8
* No 3 Stokes Hill West	4.6
* No 4 Stokes Hill East	1.8
* No 4 Stokes Hill Middle	0.8
* No 4 Stokes Hill West	4.0
* Fishermans Wharf East	1.9
* Fishermans Wharf West 100-180m	1.6
* Fishermans Wharf West 180-199m	0.9
* Toll International	-0.7
* Toll Domestic	-1.8
* Frances Bay Marina approach channel	-0.8
* Marine Supply Base Channel	7.5
* Marine Supply Base 0-110m	8.4
* Marine Supply Base 110-280m	7.5
* Module Offloading Facility Channel	2.7
* Module Offloading Facility North	7.0
* Module Offloading Facility East	8.5
* Module Offloading Facility South	7.0
* Indicates new or revised entry.	

Chart temporarily affected - Aus 24 - Aus 27 - Aus 28**790(T)/2014 AUSTRALIA - NORTHERN TERRITORY - Darwin - East Arm - Bladin Point - Harbour works***Former Notice - 697(T)/2014 is cancelled*

Darwin Port Corporation Notice 98(T)/2014 (AA754265)

Works associated with the construction of the product loading jetty are in progress in an area bounded by the following positions:

12° 30'.51 S 130° 54'.25 E
 12° 30'.38 S 130° 55'.11 E
 12° 30'.57 S 130° 55'.28 E
 12° 30'.90 S 130° 54'.64 E
 12° 30'.66 S 130° 54'.26 E.

Mariners are advised to navigate with caution in the area.

Chart temporarily affected - Aus 26 - Aus 28 - AX 00026T**791(T)/2014 AUSTRALIA - WESTERN AUSTRALIA - Barrow Island - Mooring buoys northwestwards***Date - Until 10 September 2014*

Viking Seatech (AA760037), Australian Maritime Safety Authority Auscoast Warning 185/2014 (AA760058)

8 yellow lit mooring buoys, *Fl*.3s, exist within 1NM radius of position 20° 27'.49 S 114° 50'.95 E.**Chart temporarily affected - Aus 328**

792(T)/2014 AUSTRALIA - WESTERN AUSTRALIA - Dampier Archipelago - Racon restored northwards

Former Notice - 595(T)/2014 is cancelled
Woodside Energy Ltd (AA760139)

Cancel this notice on receipt.

Chart formerly affected - Aus 327 - Aus 741

793(T)/2014 AUSTRALIA - WESTERN AUSTRALIA - Esperance - Depth information

Former Notice - 418(T)/2012 is cancelled
Esperance Ports Sea and Land (AA759973)

Available depths as of 11 August 2014:

<i>Location</i>	<i>Metres</i>
* Berth No 1	14.2
* Berth No 2	13.7
* Berth No 3	19.1
* Swing Basin	14.6
* Entrance Channel	19.4
* Indicates revised entry	

Chart temporarily affected - Aus 119

794(T)/2014 AUSTRALIA - WESTERN AUSTRALIA - Garden Island - Cable operations

Date - Until 28 August 2014
Department of Transport WA Notice 130/2014 (AA758783, AA760001)

JUB *Sealift 2* and support vessels are conducting submarine cable repair works and laying cable between positions 32° 15'.07 S 115° 41'.00 E and 32° 15'.13 S 115° 40'.60 E.

The area will be marked by special light buoys.

All vessels will display appropriate lights and shapes and will monitor VHF Ch 14 and Ch 16.

Mariners are advised to navigate with caution in the area.

Chart temporarily affected - Aus 111 - Aus 117 - AX 00117T

795(T)/2014 AUSTRALIA - WESTERN AUSTRALIA - Glomar Shoal - Survey operations northwestwards completed

Former Notice - 707(T)/2014 is cancelled
Woodside Energy Ltd (AA759017)

Cancel this notice on receipt.

Chart formerly affected - Aus 327 - Aus 741

796(T)/2014 AUSTRALIA - WESTERN AUSTRALIA - Glomar Shoal - Mooring buoys northwestwards

Date - Until 5 September 2014
Viking Seatech (AA759617), Australian Maritime Safety Authority Auscoast Warning 181/2014 (AA759669)

6 yellow mooring buoys, *Fl.3s*, exist within 1NM radius of position 19° 18'.60 S 116° 33'.68 E.

Chart temporarily affected - Aus 327 - Aus 741

797(T)/2014 AUSTRALIA - WESTERN AUSTRALIA - Montebello Islands - Drill rig northwestwards

Former Notice - 545(T)/2014 is cancelled
Date - Until 5 December 2014
MODU *Deepwater Frontier* (AA758821, AA759113), Australian Maritime Safety Authority Auscoast Warning 180/2014 (AA759130)

MODU *Deepwater Frontier* is conducting drilling operations in position 19° 49'.81 S 114° 34'.13 E.

Chart temporarily affected - Aus 328 - Aus 4723 (INT 723) - AX 04723U

798(T)/2014 AUSTRALIA - WESTERN AUSTRALIA - Montebello Islands - Works northwards*Date - Until 8 September 2014*

Chevron Australia Pty Ltd (AA759520)

Works are in progress to install the leg supports for the Wheatstone platform in position 19° 55'.76 S 115° 23'.04 E.

Chart temporarily affected - Aus 327 - Aus 328**799(T)/2014 AUSTRALIA - WESTERN AUSTRALIA - Montebello Islands - Gas field charted northwestwards***Former Notice - 1291(T)/2013 is cancelled*

Apache Energy Ltd (AA760139)

Note: ntm 728/2014 refers.

Cancel this notice on receipt.

Chart formerly affected - Aus 328**800(T)/2014 AUSTRALIA - WESTERN AUSTRALIA - Rankin Bank to Exmouth Plateau - Scientific instruments recovered***Former Notice - 144(T)/2014 is cancelled*

MetOcean Engineers (AA759142)

Cancel this notice on receipt.

Chart formerly affected - Aus 327 - Aus 328 - Aus 329 - Aus 4603 (INT 603) - AX 04603U**801(T)/2014 INDIAN OCEAN - Investigator Ridge - Light buoy off station***Former Notice - 758(T)/2014 is cancelled*

Australian Bureau of Meteorology (AA760128)

The light buoy (13° 59'.0 S 110° 00'.0 E) is drifting and currently in position 13° 40'.59 S 100° 16'.94 E (12 August 2014).

Chart temporarily affected - Aus 4708 (INT 708) - Aus 4723 (INT 723) - AX 04708U - AX 04723U**802(T)/2014 AUSTRALIA - SOUTH AUSTRALIA - Cape Jaffa - Dredging operations***Date - Until 8 September 2014*

Department of Planning, Transport and Infrastructure SA Notice 30/2014 (AA759978)

Dredging operations are in progress in the entrance channel (36° 56'.23 S 139° 41'.87 E).

The dredge will display appropriate lights and shapes.

The boat ramp at the marina is not available for access.

Mariners are advised to navigate with caution in the area.

Chart temporarily affected - Aus 127**803(T)/2014 AUSTRALIA - SOUTH AUSTRALIA - Spencer Gulf - Thistle Island - Defence trials***Date - Until 24 August 2014*

Department of Defence (AA760031)

Defence trials will be conducted within a 2M radius of position 35° 00'.10 S 136° 15'.14 E during the period 20 Aug to 23 Aug 2014.

Mariners are advised to navigate with caution in the area.

Chart temporarily affected - Aus 343 - Aus 485 - Aus 776 - AX 00343S - AX 00776S

804(T)/2014 AUSTRALIA - VICTORIA - Port Phillip - Port Melbourne - Webb Dock - Harbour works; silt curtain; retaining wall

Former Notices - 473(T)/2014, 663(T)/2014 are cancelled

Date - Until 30 November 2016

Victorian Notices 71(T)/2014, 84(T)/2014, 138(T)/2014 (AA733134, AA739510, AA760199)

Harbour works associated with the construction of a new international container terminal are in progress.

The berths 3E (37° 50'.60 S 144° 54'.45 E), 4E (37° 50'.73 S 144° 54'.54 E) and 5E (37° 50'.87 S 144° 54'.65 E) are temporarily unavailable for access.

Two silt curtains, marked by lit flashing and unlit yellow buoys, exist between:

- 1- 37° 50'.44 S 144° 54'.23 E and 37° 50'.65 S 144° 54'.28 E
- 2- 37° 50'.35 S 144° 54'.30 E, 37° 50'.37 S 144° 54'.29 E and 37° 50'.38 S 144° 54'.25 E.

A retaining wall exists approximately 350m along the western shoreline from a position north of the Webb Dock West 2 pontoon and within the silt curtain.

Mariners are advised to navigate with caution in the area.

Chart temporarily affected - Aus 154

HYDROGRAPHIC REPORTS

<i>Locality</i>	<i>Report</i>	<i>Ship/Authority</i>	<i>Observer</i>
QLD- Moreton Bay	Pipeline and cables		A McCracken

NAVIGATION WARNINGS

The following radio messages have been received during the period to 14 Aug 2014. Signal copies of these messages may be destroyed. It is recommended that the reprint of Navigational Warnings should be kept in a file or a book divided into areas. Cancellation should be made on receipt of signals and reprints.

Rigs on location other than those listed in the latest Section III summary are the subject of Radio Navigational Warnings. Rigs in transit will not be the subject of Warnings.

AUSCOAST WARNING

- 177 Cancelled.
- 178 Cancelled.
- 179 Cancelled.
- 180 Drill rig *Deepwater Frontier* in position 19° 49'.81 S 114° 34'.13 E. 2.5M clearance requested.
- 181 Six yellow buoys *Fl.3s* deployed within 1M of 19° 18'.60 S 116° 33'.66 E. 2M clearance requested.
- 182 Special purpose vessel *Duke* conducting seismic survey in an area bounded by 29° 00'.0 S to 31° 00'.0 S and 113° 30'.0 E to 115° 10'.0 E. 2.5M clearance requested.
- 183 Cancelled.
- 184 Cancelled.
- 185 8 x 6m yellow buoys *Fl.3s* established within 1M of 20° 27'.49 S 114° 50'.95 E.
- 186 Maxwell Reef light K3215.5 in position 14° 47'.14 S 145° 18'.88 E unreliable.
- 187 Karratha DGPS station ALRS Vol(2) in position 20° 42'.41 S 116° 46'.44 E temporarily discontinued.
- 188 Exmouth DGPS station ALRS Vol(2) in position 21° 53'.06 S 114° 08'.04 E temporarily discontinued.

NAVAREA X WARNINGS

- 046 Cancelled.
- 047 Cancelled.
- 048 Cancelled.
- 049 Buka Island chart Aus 684 Buka Passage shoals located:
 - A. 0.3 metres 5° 28'.68 S 154° 36'.02 E
 - B. 0.6 metres 5° 28'.51 S 154° 35'.93 E
 - A. 6.7 metres 5° 28'.01 S 154° 37'.15 E.
- 050 Approximately 30 metre steel hull fishing vessel on fire, abandoned and adrift in position 9° 01'.0 S 79° 04'.0 E at 120900UTC.

Navigational warnings in force as at 140001UTC AUG 14.**Auscoast**

2014 140 154 155 160 162 164 165 166 168 172 173 176 180 181 182 185 186 187 188

Navarea X

2014 049 050

Summary of mobile drilling rigs as at 140001UTC AUG 14.

<i>Name</i>	<i>Position</i>
Stena Clyde	11° 59'.60 S 124° 40'.30 E
Noble Clyde Boudreaux	13° 49'.00 S 123° 19'.35 E
Jack Bates	13° 41'.54 S 122° 48'.21 E
Transocean Legend	13° 40'.91 S 122° 23'.94 E
Deepwater Millennium	16° 20'.80 S 119° 43'.70 E
Atwood Eagle	18° 43'.22 S 118° 42'.23 E
Atwood Osprey	19° 48'.67 S 115° 17'.73 E
Nan Hai 6	19° 15'.50 S 116° 38'.30 E
Ocean America	20° 31'.20 S 114° 49'.41 E
Deepwater Frontier	19° 49'.81 S 114° 34'.13 E
Atwood Falcon	21° 20'.95 S 114° 04'.40 E

NAVAREA XIV WARNINGS

Nil.

Navarea XIV warnings in force as at 140001UTC AUG 14.

2014 Nil.

To accompany Australian Notice to Mariners 772/2014

MARINE FARMS

Marine farms, which may be floating or fixed structures and their associated moorings should be avoided. The farms are generally marked by buoys or beacons, which may be lit. Their charted positions are approximate.

Note for chart Aus 334

To accompany Australian Notice to Mariners 772/2014

MARINE FARMS

Marine farms, which may be floating or fixed structures and their associated moorings should be avoided. The farms are generally marked by buoys or beacons, which may be lit. Their charted positions are approximate.

Note for chart Aus 755

To accompany Australian Notice to Mariners 772/2014

MARINE FARMS

Marine farms, which may be floating or fixed structures and their associated moorings should be avoided. The farms are generally marked by buoys or beacons, which may be lit. Their charted positions are approximate.

Note for chart AX 00755S

To accompany Australian Notice to Mariners 772/2014

MARINE FARMS

Marine farms, which may be floating or fixed structures and their associated moorings should be avoided. The farms are generally marked by buoys or beacons, which may be lit. Their charted positions are approximate.

Note for chart Aus 335

To accompany Australian Notice to Mariners 772/2014

MARINE FARMS

Marine farms, which may be floating or fixed structures and their associated moorings should be avoided. The farms are generally marked by buoys or beacons, which may be lit. Their charted positions are approximate.

Note for chart AX 00334S

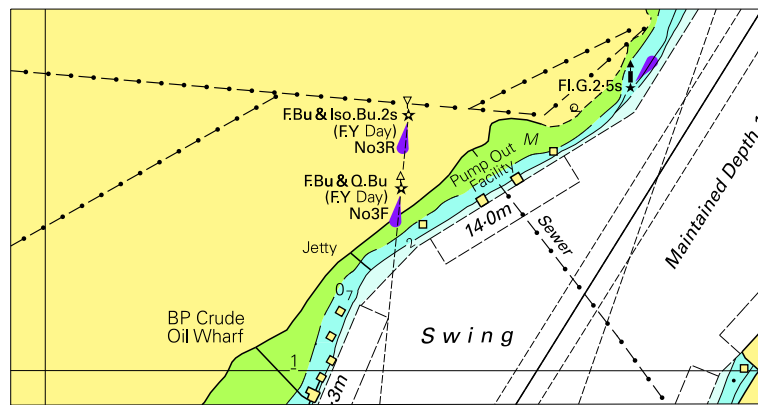
To accompany Australian Notice to Mariners 772/2014

MARINE FARMS

Marine farms, which may be floating or fixed structures and their associated moorings should be avoided. The farms are generally marked by buoys or beacons, which may be lit. Their charted positions are approximate.

Note for chart AXA 0754S

To accompany Australian Notice to Mariners 766/2014

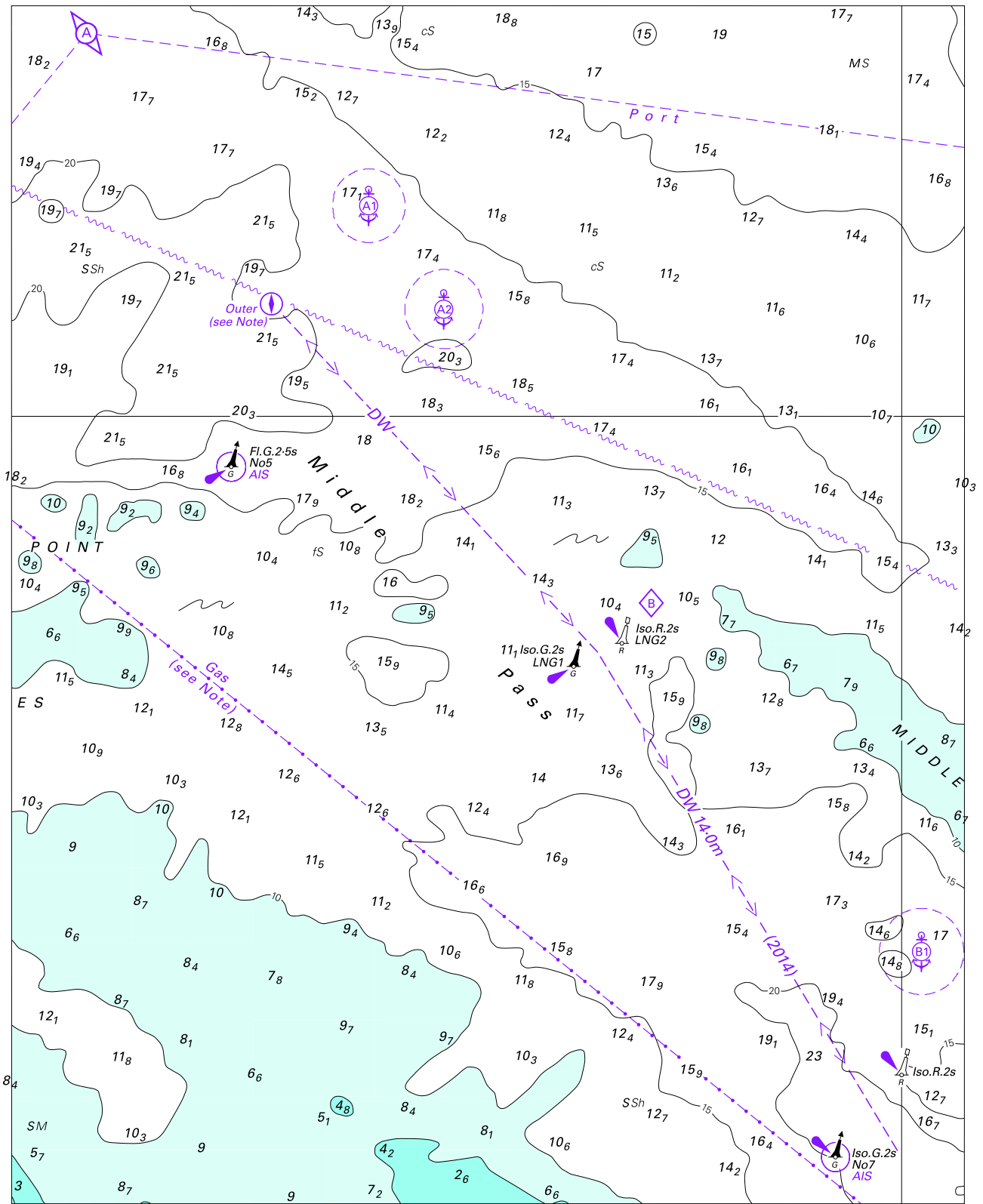


© Commonwealth of Australia 2014

Block for chart Aus 237

(99.0 x 52.4mm)

To accompany Australian Notice to Mariners 771/2014

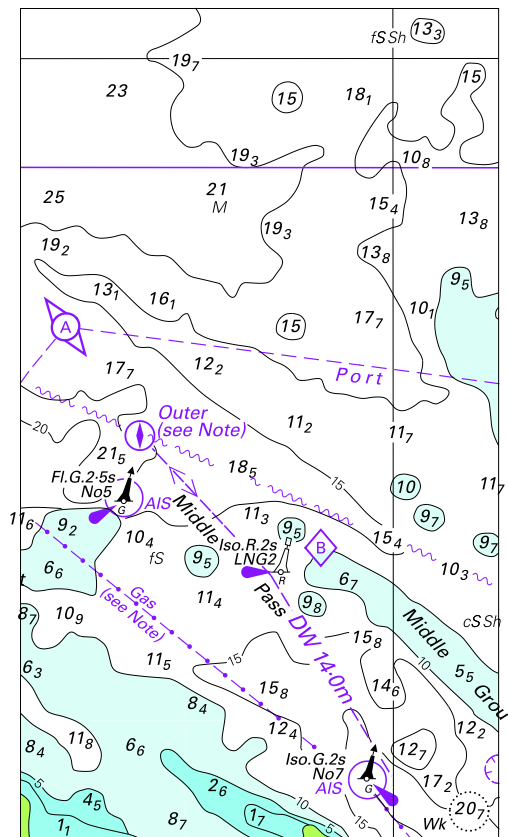


Block for Aus 26

© Commonwealth of Australia 2014

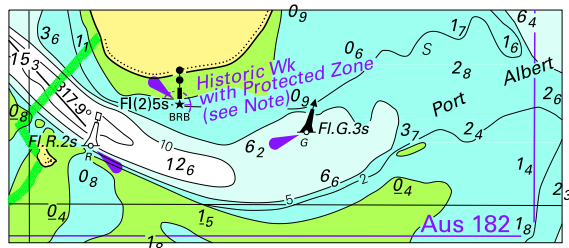
(167.0 x 209.9mm)

To accompany Australian Notice to Mariners 771/2014



© Commonwealth of Australia 2014
Block for chart Aus 722 (63.2 x 109.6mm)

To accompany Australian Notice to Mariners 777/2014



© Commonwealth of Australia 2014
Block for chart Aus 181 (73.2 x 30.8mm)

To accompany Australian Notice to Mariners 777/2014

