



1 August 2014

Edition 15

Australian Notices to Mariners are the authority for correcting Australian Charts and Publications

---

# AUSTRALIAN NOTICES TO MARINERS

**Notices 716 - 763**



Published fortnightly by the Australian Hydrographic Service

Commodore B.K. BRACE RAN  
*Hydrographer of Australia*

---

## SECTIONS.

- I. Australian Notices to Mariners, including blocks and notes.
- II. Hydrographic Reports.
- III. Navigational Warnings.

## SUPPLEMENTS.

- I. Tracings
- II. Cumulative List of Australian Notices to Mariners.
- III. Cumulative List of Temporary and Preliminary Australian Notices to Mariners.
- IV. Temporary and Preliminary Notices in force.
- V. Amendments to Admiralty List of Lights and Fog Signals (Vol K), Radio Signals (NP 281(2), 282, 283(2), 285, 286(4)) and Sailing Directions (NP 9, 13, 14, 15, 33, 34, 35, 36, 39, 44, 51, 60, 61, 62, 100, 136).

---

© Commonwealth of Australia 2014

This work is copyright. Apart from any use permitted under the Copyright Act 1968, no part may be reproduced by any process, adapted, communicated or commercially exploited without prior written permission from The Commonwealth represented by the Australian Hydrographic Service.

## IMPORTANT NOTICE

This edition of Notices to Mariners includes all significant information affecting AHS products which the AHS has become aware of since the last edition. All reasonable efforts have been made to ensure the accuracy and completeness of the information, including third party information, on which these updates are based. The AHS regards third parties from which it receives information as reliable, however the AHS cannot verify all such information and errors may therefore exist. The AHS does not accept liability for errors in third party information.

---

## GENERAL INSTRUCTIONS

The substance of these notices should be inserted on the charts affected.

Bearings are referred to the true compass and are reckoned clockwise from North; those relating to lights are given as seen by an observer from seaward. Positions quoted in permanent notices relate to the horizontal datum for the chart(s). When preliminary or temporary notices affect multiple charts, positions will be provided in relation to only one horizontal datum and that datum will be specified. When the multiple charts do not have a common horizontal datum, mariners will be required to adjust the position(s) for those charts not on the specified datum. The range quoted for a light is its nominal range. Depths are with reference to the chart datum of each chart. Heights are above mean high water springs or mean higher high water, as appropriate.

The capital letter (P) or (T) after the number of any notice denotes a preliminary or temporary notice respectively, which are contained separately at the end of the permanent notices. A star (\*) adjacent to the number of a notice indicates that the notice is based on original information.

---

## REPORTING OF DANGERS

Mariners are particularly requested to notify the AUSTRALIAN HYDROGRAPHIC SERVICE, Locked Bag 8801 Wollongong, NSW 2500 (Fax 02-4223 6599, e-mail [Hydro.NTM@defence.gov.au](mailto:Hydro.NTM@defence.gov.au) or, alternatively by filling in and submitting the [Hydrographic Notes](#) forms located on the web site – [www.hydro.gov.au](http://www.hydro.gov.au)), immediately on the discovery of new dangers or suspected dangers to navigation. For changes or defects in aids to navigation notify AusSAR (Fax 02-6230 6868 or email [rccaus@amsa.gov.au](mailto:rccaus@amsa.gov.au)).

---

## AUTHORISED USE

Copies of Australian notices are available free of charge from the Australian Hydrographic Service (AHS) website ([www.hydro.gov.au](http://www.hydro.gov.au)) and through the eNotices (email) service ([www.hydro.gov.au/enotices/enotices.htm](http://www.hydro.gov.au/enotices/enotices.htm)).

Individual Notices may be copied for the purpose of inserting Notice substance on official charts and publications. Paper copies may be printed by chart agents and distributed to customers on a cost recovery basis. Participating chart agents are listed on the AHS website as providing a 'Paper Notices to Mariners' service ([www.hydro.gov.au/prodserv/distributors/distributors.htm](http://www.hydro.gov.au/prodserv/distributors/distributors.htm)). Copies of the notices may not be sold for profit without prior written agreement.

## NUMERICAL INDEX OF NOTICES TO MARINERS

### Edition No 15

Notices	Aus Chart, INT Chart, ENC Cell, AHP, BA Pubs
716	Aus 57, 58, 59, 60, 258, 262, 270, 281, 367, 490, 816, 818, 819, 820, 830
717	Amendment to Australian National Tide Tables 2014
718	Aus 204, 217
719	Aus 831
720	Aus 245
721	Aus 247
722	Aus 236
723	Aus 835
724	Aus 24, 27
725	Aus 26, AX 00026T
726	Aus 309, AX 00309T, 00309U
727	Aus 83, 751
728	Aus 328, 742
729	Aus 331, 747, 748, 749
730	Aus 32
731	Aus 125
732	Aus 136
733	Aus 182
734(T)	Aus 238
735(T)	Aus 826
736(T)	Aus 268
737(T)	Aus 249, 250, 823, 824, AX 00249S, 00823S
738(T)	Aus 235, 236, 237, 238, 814, 815
739(T)	Aus 236
740(T)	Aus 236
741(T)	Aus 260, 367, 822, AX 00260S, 00260T, 00367S, 00822S
742(T)	Aus 257
743(T)	Aus 257
744(T)	Aus 257
745(T)	Aus 256, 257
746(T)	Aus 262, 263, 264, 830, AX 63262, AXA 0830T
747(T)	Aus 24, 26, 309, 722, AX 00026T, 00309U, 00309T, 00722T
748(T)	Aus 24, 26, 29, 43, 52, 53, 309, 311, 312, 314, 315, 316, 319, 320, 322, 326, 722, 739, 740, 4721, 4722, INT 721, 722, AX 00026T, 00309T, 00309U, 00311U, 00312U, 00314U, 00315U, 00319U, 00322U, 00722T, 04721U, 04722U
749(T)	Aus 57, 58
750(T)	Aus 301, 4720, INT 720, AX 04720U
751(T)	Aus 328, 329, 744, 4723, 4725, INT 723, 725, AX 04723U
752(T)	Aus 332, 333, 751, 752, 753
753(T)	Aus 326, 4722, 4723, INT 722, 723, AX 04722U, 04723U
754(T)	Aus 326, 4722, 4723, INT 722, 723, AX 04722U, 04723U
755(T)	Aus 326, 4722, 4723, INT 722, 723, AX 04722U, 04723U
756(T)	Aus 314, AX 00314U
757(T)	Aus 312, AX 00312U
758(T)	Aus 4708, 4723, INT 708, 723, AX 04708U, 04723U
759(P)	Aus 181, 182
760(T)	Aus 144, 158
761(T)	Aus 155
762(T)	Aus 143
763(T)	Aus 153, 157

# NUMERICAL INDEX OF CHARTS AFFECTED

## Edition No 15

Aus Chart	Notices
Aus 24	724, 747(T), 748(T)
Aus 26	725, 747(T), 748(T)
Aus 27	724
Aus 29	748(T)
Aus 32	730
Aus 43	748(T)
Aus 52	748(T)
Aus 53	748(T)
Aus 57	716, 749(T)
Aus 58	716, 749(T)
Aus 59	716
Aus 60	716
Aus 83	727
Aus 125	731
Aus 136	732
Aus 143	762(T)
Aus 144	760(T)
Aus 153	763(T)
Aus 155	761(T)
Aus 157	763(T)
Aus 158	760(T)
Aus 181	759(P)
Aus 182	733, 759(P)
Aus 204	718
Aus 217	718
Aus 235	738(T)
Aus 236	722, 738(T), 739(T), 740(T)
Aus 237	738(T)
Aus 238	734(T), 738(T)
Aus 245	720
Aus 247	721
Aus 249	737(T)
Aus 250	737(T)
Aus 256	745(T)
Aus 257	742(T), 743(T), 744(T), 745(T)
Aus 258	716
Aus 260	741(T)
Aus 262	716, 746(T)
Aus 263	746(T)
Aus 264	746(T)
Aus 268	736(T)
Aus 270	716
Aus 281	716
Aus 301	750(T)
Aus 309	726, 747(T), 748(T)
Aus 311	748(T)
Aus 312	748(T), 757(T)
Aus 314	748(T), 756(T)
Aus 315	748(T)
Aus 316	748(T)
Aus 319	748(T)
Aus 320	748(T)
Aus 322	748(T)
Aus 326	748(T), 753(T), 754(T), 755(T)

Aus Chart	Notices
Aus 328	728, 751(T)
Aus 329	751(T)
Aus 331	729
Aus 332	752(T)
Aus 333	752(T)
Aus 367	716, 741(T)
Aus 490	716
Aus 722	747(T), 748(T)
Aus 739	748(T)
Aus 740	748(T)
Aus 742	728
Aus 744	751(T)
Aus 747	729
Aus 748	729
Aus 749	729
Aus 751	727, 752(T)
Aus 752	752(T)
Aus 753	752(T)
Aus 814	738(T)
Aus 815	738(T)
Aus 816	716
Aus 818	716
Aus 819	716
Aus 820	716
Aus 822	741(T)
Aus 823	737(T)
Aus 824	737(T)
Aus 826	735(T)
Aus 830	716, 746(T)
Aus 831	719
Aus 835	723
Aus 4708	758(T)
Aus 4720	750(T)
Aus 4721	748(T)
Aus 4722	748(T), 753(T), 754(T), 755(T)
Aus 4723	751(T), 753(T), 754(T), 755(T), 758(T)
Aus 4725	751(T)
AX 00026T	725, 747(T), 748(T)
AX 00249S	737(T)
AX 00260S	741(T)
AX 00260T	741(T)
AX 00309U	726, 747(T), 748(T)
AX 00309T	726, 747(T), 748(T)
AX 00311U	748(T)
AX 00312U	748(T), 757(T)
AX 00314U	748(T), 756(T)
AX 00315U	748(T)
AX 00319U	748(T)
AX 00322U	748(T)
AX 00367S	741(T)
AX 00722T	747(T), 748(T)
AX 00822S	741(T)
AX 00823S	737(T)
AX 04708U	758(T)

Aus Chart	Notices
AX 04720U	750(T)
AX 04721U	748(T)
AX 04722U	748(T), 753(T), 754(T), 755(T)
AX 04723U	751(T), 753(T), 754(T), 755(T), 758(T)
AX 63262	746(T)
AXA 0830T	746(T)

INT Chart	Notices
INT 708	758(T)
INT 720	750(T)
INT 721	748(T)
INT 722	748(T), 753(T), 754(T), 755(T)
INT 723	751(T), 753(T), 754(T), 755(T), 758(T)
INT 725	751(T)

**716 AUSTRALIA - Product**

Australian Hydrographic Service (AA756935), UKHO (AA756320)

**New Edition**

<i>Chart</i>	<i>Published</i>	<i>Title and description of amendments</i>	<i>Scale</i>	<i>Index Chart</i>	<i>Price</i>
Aus 57	1/8/2014	Australia - North West Coast - Western Australia - Dampier Archipelago 20° 17'·37 S – 20° 43'·92 S 116° 21'·50 E – 117° 06'·08 E <i>New edition with general updating throughout; including changes to anchorages and pilotage.</i>	1:75 000	Aus 5000	\$35.00
Aus 58	1/8/2014	Australia - North West Coast - Western Australia - Port of Dampier 20° 18'·22 S – 20° 40'·93 S 116° 37'·03 E – 116° 51'·12 E <i>New edition with general updating throughout; including changes to anchorages and pilotage.</i>	1:37 500	Aus 5000	\$35.00
Aus 59	1/8/2014	Australia - North West Coast - Western Australia - Port of Dampier (Northern Sheet) 20° 32'·46 S – 20° 38'·52 S 116° 42'·55 E – 116° 46'·30 E <i>New edition with general updating throughout; including changes to anchorages and pilotage.</i>	1:10 000	Aus 5000	\$35.00
Aus 60	1/8/2014	Australia - North West Coast - Western Australia - Port of Dampier (Southern Sheet) 20° 36'·60 S – 20° 40'·15 S 116° 38'·15 E – 116° 44'·10 E Inset: Kaiser Marina 20° 39'·90 S – 20° 40'·50 S 116° 41'·30 E – 116° 42'·10 E <i>New edition with general updating throughout; including changes to anchorages and pilotage.</i>	1:10 000 1:10 000	Aus 5000	\$35.00
Aus 367	1/8/2014	Australia - East Coast - Queensland - Swain Reefs to Penrith Island 20° 49'·0 S – 22° 40'·0 S 149° 37'·5 E – 153° 00'·5 E <i>New edition with general updating throughout; including new two way route.</i>	1:300 000	Aus 5000 and Aus 5001	\$35.00
Aus 490	1/8/2014	Australia - East Coast - Queensland - Sandy Cape to Swain Reefs 19° 59'·0 S – 24° 50'·0 S 150° 34'·0 E – 153° 52'·0 E <i>New edition with general updating throughout; including new two way route.</i>	1:500 000	Aus 5000 and Aus 5001	\$35.00
Aus 816	1/8/2014	Australia - East Coast - Queensland - North Spit to Breaksea Spit 24° 13'·8 S – 25° 46'·2 S 153° 03'·4 E – 154° 02'·8 E <i>New edition with general updating throughout; including new two way route.</i>	1:150 000	Aus 5001	\$35.00
Aus 818	1/8/2014	Australia - East Coast - Queensland - Sandy Cape to Bustard Head 23° 51'·9 S – 24° 46'·3 S 151° 44'·1 E – 153° 18'·0 E <i>New edition with general updating throughout; including new two way route.</i>	1:150 000	Aus 5001	\$35.00
Aus 819	1/8/2014	Australia - East Coast - Queensland - Bustard Head to North Reef 23° 08'·67 S – 24° 03'·38 S 150° 45'·05 E – 152° 26'·62 E Inset: Fitzroy River 23° 21'·72 S – 23° 32'·42 S 130° 30'·05 E – 152° 49'·70 E <i>New edition with general updating throughout; including new two way route.</i>	1:150 000 1:150 000	Aus 5001	\$35.00

**716 AUSTRALIA - Product**

Aus 820 1/8/2014 Australia - East Coast - Queensland - North Reef to Port Clinton 1:150 000 Aus 5000 and \$35.00  
 22° 23'·50 S – 23° 18'·53 S  
 150° 39'·00 E – 152° 12'·90 E  
*New edition with general updating throughout;  
 including new two way route.*  
 Aus 5001

**New Chart to be published shortly**

Chart	Title	Scale	Expected Publication Date
Aus 271	Australia - East Coast - Queensland - Auckland Point to Fishermans Landing Wharves	1:10 000	15 August 2014
Aus 272	Australia - East Coast - Queensland - Fishermans Landing Wharves to Laird Point	1:10 000	15 August 2014

**New edition to be published shortly**

Chart	Title	Scale	Expected Publication Date
Aus 258	Australia - East Coast - Queensland - Plans in Queensland (Sheet 1) Plans: Gladys Inlet to King Reefs Dunk Island Mourilyan Harbour Oyster Point	 1:50 000 1:50 000 1:7 500 1:7 500	15 August 2014
Aus 262	Australia - East Coast - Queensland - Approaches to Cairns	1:25 000	15 August 2014
Aus 270	Australia - East Coast - Queensland - Plans in Queensland (Sheet 2) Plans: Cape Melville and Pipon Islets Approaches to Heath Reef Howick Group Cape Flattery Wharf Cooktown Port Douglas	 1:75 000 1:50 000 1:50 000 1:10 000 1:10 000 1:10 000	15 August 2014
Aus 281	Australia - East Coast - Queensland - First Three Mile Opening to Cape Direction	1:75 000	15 August 2014
Aus 830	Australia - East Coast - Queensland - Russell Island to Low Islets	1:150 000	15 August 2014

**Chart permanently withdrawn**

Chart	On publication of new edition
Aus 57	Aus 57
Aus 58	Aus 58
Aus 59	Aus 59
Aus 60	Aus 60
Aus 367	Aus 367
Aus 490	Aus 490
Aus 816	Aus 816
Aus 818	Aus 818
Aus 819	Aus 819
Aus 820	Aus 820

**Admiralty publication**

NP No	Title	Date	Remarks
NP204-15	Admiralty Tide Tables, Volume 4, South Pacific Ocean (including Tidal Stream Tables).	31/07/2014	

For further details refer to the AHS website at [www.hydro.gov.au](http://www.hydro.gov.au) for new edition and new chart stock arrival information.

When placing orders with a chart agent, mariners should advise whether their order pertains to the current edition or the new edition.

**717 AUSTRALIA - Amendment to Australian National Tide Tables 2014**  
 Australian Hydrographic Service (AA757055)

Page xxx

*Amend* Bugatti Reef To Chart Datum AUS 821 NE 18 Jul 2014 0.0

Page xxxiii

*Amend* Hay Point To Chart Datum AUS 249 NE 18 Jul 2014 0.0

*Amend* Hay Point To Chart Datum AUS 823 NE 18 Jul 2014 0.0

Page xxxiv

*Amend* Mackay To Chart Datum AUS 249 NE 18 Jul 2014 0.0

Mackay To Chart Datum AUS 823 NE 18 Jul 2014 0.0

**718\* AUSTRALIA - NEW SOUTH WALES - Hawkesbury River - Brooklyn to Spencer - Light beacons; light buoy**

NSW Roads and Maritime Services (AA756372)

**Aus 204 [672/2014]**

Insert	starboard lateral conical light buoy, <i>Fl.G.3s</i> , without topmark	33° 27'.57 S	151° 09'.00 E
--------	--	--------------	---------------

Substitute	port lateral beacon with topmark for light beacon	33° 32'.7 S	151° 13'.1 E
------------	---	-------------	--------------

Delete	topmark	33° 32'.6 S	151° 12'.1 E
	light beacon	33° 27'.6 S	151° 09'.0 E

**Aus 217 [313/2014]**

Substitute	port lateral beacon with topmark for light beacon	33° 32'.66 S	151° 13'.11 E
------------	---	--------------	---------------

Delete	topmark	33° 32'.58 S	151° 12'.09 E
--------	---------	--------------	---------------

**719\* AUSTRALIA - QUEENSLAND - Archer Point - Navline**

Australian Maritime Safety Authority (AA754745)

**Aus 831 [618/2014]**

Amend	legend to <i>Dir</i> 336°	15° 49'.7 S	145° 26'.2 E
-------	---------------------------	-------------	--------------

**720\* AUSTRALIA - QUEENSLAND - Gladstone - Tide Island - Light buoys**

Maritime Safety Queensland (AA755784)

**Aus 245 [616/2014]**

Delete	light buoy	23° 47'.72 S	151° 12'.88 E
	light buoy	23° 48'.00 S	151° 13'.31 E
	light buoy	23° 48'.12 S	151° 13'.53 E
	light buoy	23° 47'.88 S	151° 13'.68 E
	light buoy	23° 47'.74 S	151° 14'.00 E

**721\* AUSTRALIA - QUEENSLAND - Great Keppel Island - Two-Way route eastwards**

Australian Maritime Safety Authority (AA758146)

**Aus 247 [562/2014]**

Insert	accompanying block	23° 12'.5 S	151° 16'.0 E
	accompanying note	23° 15'.0 S	150° 31'.0 E

**722\* AUSTRALIA - QUEENSLAND - Manly - Nav aids**

Maritime Safety Queensland Notices 321/2014, 338/2014, 442/2014 (AA747994, AA749646, AA757149)

**Aus 236 (plan, Manly Boat Harbour) [480/2014]**

Insert	accompanying block	27° 27'.0 S	153° 12'.0 E
--------	--------------------	-------------	--------------



**723\* AUSTRALIA - QUEENSLAND - Saunders Islet - Rock northeastwards**  
LADS Flight (AA753905)

**Aus 835 [559/2014]**

Delete rock and enclosing danger circle, with legend (1<sub>6</sub>) 11° 38'.5 S 143° 17'.0 E

**724\* AUSTRALIA - NORTHERN TERRITORY - Darwin - Middle Arm - Light buoy**  
Darwin Port Corporation Notice 100(T)/2014 (AA754286)

**Aus 24 [441/2014]**

Move light buoy 12° 31'.78 S 130° 50'.85 E  
to 12° 31'.768 S 130° 50'.838 E

**Aus 27 [113/2014]**

Move light buoy 12° 31'.78 S 130° 50'.85 E  
to 12° 31'.768 S 130° 50'.838 E

**725\* AUSTRALIA - NORTHERN TERRITORY - Darwin - Middle Pass - Light buoy**  
Darwin Port Corporation Notice 108/2014 (AA756922, AA756952)

**Aus 26 [566/2014]**

Insert port lateral pillar light buoy, *Iso.R.2s*, with topmark 12° 23'.13 S 130° 45'.00 E

**AX 00026T [566/2014]**

Insert port lateral pillar light buoy, *Iso.R.2s*, with topmark 12° 23'.13 S 130° 45'.00 E

**726\* AUSTRALIA - NORTHERN TERRITORY - Parry Shoal - Depth eastwards**  
HMAS *Melville* (DHDB 2628173)

**Aus 309 [362/2014]**

Substitute depth, *21m*, for depth, 15<sub>4</sub>m and enclosing contour 11° 13'.2 S 129° 49'.8 E

**AX 00309T [251/2014]**

Substitute depth, *21m*, for depth, 15<sub>4</sub>m and enclosing contour 11° 13'.2 S 129° 49'.8 E

**AX 00309U [251/2014]**

Substitute depth, *21m*, for depth, 15<sub>4</sub>m and enclosing contour 11° 13'.2 S 129° 49'.8 E

**727\* AUSTRALIA - WESTERN AUSTRALIA - Houtman Abrolhos - Wallabi Group to Pelsaert Group - Marine farms**

Department of Fisheries WA (DHDB 2683982)

**Aus 83 (plan, Recruit Bay) [NC 18/5/2012]**

Insert	dashed line, between	28° 28'.474 S	113° 42'.425 E
		28° 28'.563 S	113° 42'.427 E
		28° 28'.512 S	113° 42'.637 E
		28° 28'.423 S	113° 42'.637 E
	dashed line and marine farm symbol with legend, (see Note), between	28° 27'.066 S	113° 44'.289 E
		28° 27'.472 S	113° 44'.173 E
		28° 27'.527 S	113° 44'.313 E
		28° 27'.051 S	113° 44'.448 E
		28° 27'.066 S	113° 44'.289 E
	dashed line and marine farm symbol with legend, (see Note), between	28° 27'.797 S	113° 44'.869 E
		28° 27'.833 S	113° 44'.785 E
		28° 27'.947 S	113° 44'.989 E
		28° 27'.917 S	113° 45'.055 E
		28° 27'.797 S	113° 44'.869 E
	dashed line and marine farm symbol with legend, (see Note), between	28° 28'.229 S	113° 45'.487 E
		28° 28'.337 S	113° 45'.361 E
		28° 28'.379 S	113° 45'.499 E
		28° 28'.259 S	113° 45'.541 E
		28° 28'.229 S	113° 45'.487 E
Delete	dashed line, between	28° 28'.47 S	113° 42'.43 E
		28° 28'.42 S	113° 42'.64 E
<b>Aus 751 [489/2014]</b>			
Insert	marine farm symbol with legend, (see Note), centred on	28° 27'.3 S	113° 44'.3 E
Delete	marine farm, centred on	28° 54'.5 S	113° 56'.6 E
	marine farm, centred on	28° 53'.3 S	114° 00'.0 E

**728\* AUSTRALIA - WESTERN AUSTRALIA - Montebello Islands - Gas field northwestwards**  
Apache Energy Ltd (AA753466)

**Aus 328 [406/2014]**

Insert	accompanying block	20° 02'.0 S	115° 07'.0 E
--------	--------------------	-------------	--------------

**Aus 742 [623/2014]**

Insert	accompanying block A	20° 09'.5 S	115° 14'.0 E
	accompanying block B	20° 17'.5 S	115° 14'.0 E

**729\* AUSTRALIA - WESTERN AUSTRALIA - Shark Bay - Carnarvon to Blind Strait - Marine farms**

Department of Fisheries WA (DHDB 2683982), Australian Hydrographic Service (AA756540)

**Aus 331 [404/2011]**

Delete	marine farm, centred on	25° 42'.0 S	113° 38'.0 E
	marine farm, centred on	25° 34'.0 S	113° 32'.3 E
	marine farm, centred on	25° 52'.7 S	113° 08'.7 E
	marine farm, centred on	25° 59'.0 S	113° 32'.7 E
	marine farm, centred on	26° 01'.4 S	113° 16'.8 E

**Aus 747 [404/2011]**

Insert	dashed line and marine farm symbol with legend, ( <i>see Note</i> ), between	25° 47'.25 S	113° 41'.37 E
		25° 46'.65 S	113° 41'.94 E
		25° 44'.66 S	113° 40'.43 E
		25° 44'.91 S	113° 40'.15 E
		25° 46'.70 S	113° 40'.76 E
	dashed line and marine farm symbol with legend, ( <i>see Note</i> ), between	24° 55'.47 S	113° 40'.71 E
		24° 59'.39 S	113° 39'.03 E
		24° 59'.38 S	113° 39'.83 E
	accompanying note	24° 36'.0 S	113° 45'.5 E

**Aus 748 [1145/2013]**

Insert	dashed line and marine farm symbol with legend, ( <i>see Note</i> ), between	25° 47'.25 S	113° 41'.37 E
		25° 46'.65 S	113° 41'.94 E
		25° 44'.66 S	113° 40'.43 E
		25° 44'.91 S	113° 40'.15 E
		25° 46'.70 S	113° 40'.76 E
Substitute	accompanying MF note for PC note	25° 30'.7 S	114° 09'.5 E
Delete	pearl culture, centred on	25° 45'.5 S	113° 40'.3 E
	pearl culture, centred on	25° 42'.0 S	113° 38'.0 E

**Aus 749 [404/2011]**

Insert	dashed line and marine farm symbol with legend, ( <i>see Note</i> ), between	25° 46'.07 S	113° 41'.50 E
		25° 44'.66 S	113° 40'.43 E
		25° 44'.91 S	113° 40'.15 E
		25° 46'.70 S	113° 40'.76 E
	dashed line, between	25° 47'.25 S	113° 41'.37 E
		25° 47'.11 S	113° 41'.50 E
	marine farm symbol with legend, ( <i>see Note</i> ), centred on	26° 00'.7 S	113° 13'.4 E
	marine farm symbol with legend, ( <i>see Note</i> ), centred on	26° 08'.5 S	113° 15'.7 E
	marine farm symbol with legend, ( <i>see Note</i> ), centred on	26° 09'.1 S	113° 16'.1 E
	marine farm symbol with legend, ( <i>see Note</i> ), centred on	26° 09'.6 S	113° 14'.9 E
Substitute	accompanying MF note for PF note	26° 22'.3 S	112° 51'.0 E
Delete	pearl culture, centred on	25° 45'.5 S	113° 40'.3 E
	pearl culture, centred on	25° 42'.0 S	113° 38'.0 E

**730\* AUSTRALIA - WESTERN AUSTRALIA - Wyndham - Roe Bank - Light buoy**

CGL Wyndham Port (AA754967)

**Aus 32 (plan, Approaches to Wyndham Wharf) [530/2014]**

Delete	light buoy	15° 18'.8 S	128° 06'.2 E
--------	------------	-------------	--------------

**731\* AUSTRALIA - SOUTH AUSTRALIA - Cape Jervis - Depth**

HydroSurvey Australia (DHDB 2682567)

**Aus 125 (plan, Cape Jervis) [1147/2013]**

Insert	depth, 1 <sub>3</sub> m, and extend contour SW to enclose	35° 36'.424 S	138° 05'.445 E
Delete	depth, 1 <sub>6</sub> m	35° 36'.42 S	138° 05'.45 E

**732\* AUSTRALIA - SOUTH AUSTRALIA - Port Bonython - Depth**  
 HydroSurvey Australia (DHDB 2682512)

**Aus 136 [686/2014]**

Substitute depth,  $14\frac{1}{4}m$ , for depth,  $12\frac{1}{2}m$

33° 02'.8 S

137° 40'.5 E

**733\* AUSTRALIA - VICTORIA - Port Welshpool - Depth**  
 Gippsland Ports (DHDB 2691459)

**Aus 182 (plan, Port Welshpool) [494/2014]**

Insert depth,  $1\frac{1}{4}m$   
 contour, between  
 contour, between

38° 42'.376 S 146° 27'.091 E

38° 42'.369 S 146° 27'.085 E

38° 42'.366 S 146° 27'.111 E

38° 42'.383 S 146° 27'.084 E

38° 42'.382 S 146° 27'.102 E

Delete depth,  $1\frac{1}{2}m$   
 contour, between  
 contour, between

38° 42'.38 S 146° 27'.08 E

38° 42'.37 S 146° 27'.09 E

38° 42'.38 S 146° 27'.08 E

38° 42'.37 S 146° 27'.11 E

38° 42'.38 S 146° 27'.10 E

**734(T)/2014 AUSTRALIA - QUEENSLAND - Brisbane River - Upper Lytton Reach - Lights altered**

Date - Until 1 March 2015

Maritime Safety Queensland Notice 423(T)/2014 (AA757006)

The lights have been temporarily altered to *F.Bu (F Day) No7R* (27° 25'.72 S 153° 08'.02 E) and *F.Bu (F Day) No7F* (27° 25'.60 S 153° 08'.12 E).

**Chart temporarily affected - Aus 238**

**735(T)/2014 AUSTRALIA - QUEENSLAND - Cape Upstart - Light buoy off station**

Maritime Safety Queensland Notice 328(T)/2014 (AA757671)

The west cardinal light buoy, *Q(9)15s* (19° 43'.08 S 147° 45'.22 E), is off station.

**Chart temporarily affected - Aus 826**

**736(T)/2014 AUSTRALIA - QUEENSLAND - Gloucester Passage - Light beacon destroyed**

Maritime Safety Queensland Notice 448(T)/2014 (AA757386)

The east cardinal light beacon (20° 03'.50 S 148° 27'.05 E) has been destroyed; a special light buoy, *Fl.Y.3s*, exists in situ.

**Chart temporarily affected - Aus 268**

**737(T)/2014 AUSTRALIA - QUEENSLAND - Mackay - Round Top Island to Slade Point - Scientific instruments**

Maritime Safety Queensland Notice 420(T)/2014 (AA757024)

Scientific instruments marked by special light buoys, *Fl.4s*, exist in the following positions:

21° 03'.90 S 149° 13'.96 E

21° 04'.82 S 149° 16'.07 E

21° 05'.60 S 149° 14'.59 E

21° 09'.92 S 149° 14'.36 E

21° 10'.10 S 149° 15'.72 E

21° 10'.69 S 149° 18'.07 E.

**Chart temporarily affected - Aus 249 - Aus 250 - Aus 823 - Aus 824 - AX 00249S - AX 00823S**

**738(T)/2014 AUSTRALIA - QUEENSLAND - Moreton Bay - Brisbane River - Depth information***Former Notice - 692(T)/2014 is cancelled*

Brisbane Port Corporation (AA757267))

Available depths and under keel clearances (UKC) at 25 July 2014:

<i>Berth</i>	<i>Metres</i>	<i>Remarks</i>
Fisherman Islands No12	14.0	
Fisherman Islands No11	13.9	
Fisherman Islands No10	14.0	
Fisherman Islands No9	14.0	
Fisherman Islands No8	14.1	
* Fisherman Islands No7	13.9	
* Fisherman Islands No6	13.7	
Fisherman Islands No5	13.6	
Fisherman Islands No4	14.0	
Fisherman Islands No3	13.9	
Fisherman Islands No2	13.9	
Fisherman Islands No1	14.0	
Fisherman Islands Grain and Woodchip	13.0	
Caltex Fisherman Islands	14.1	
* Fisherman Islands Coal	14.0	
* Fisherman Islands General Purpose	11.5	
Luggage Point Pump Out Facility	13.9	
BP Luggage Point	14.4	
Caltex Products	10.1	
* Cement Australia Co Wharf	9.8	
* BP Products	11.1	
* Viva Energy	10.9	
Graincorp Liquid Terminal	10.4	
Incitec North	9.8	
Incitec South	9.3	
Pinkenba 1	10.4	
Pinkenba 2	10.4	
Riverside Marina	-	
Sugar Terminal	9.7	
Cairncross Fitting Out Wharf	7.1	
Cairncross Breasting Wharf	4.4	
Brisbane Naval Wharf	4.3	
* Maritime No1	8.5	
Hamilton No4	10.3	
Hamilton No1	8.7	
Brisbane Cruise Ship Terminal	8.7	
	<i>Metres</i>	<i>UKC/Remarks</i>
<i>Moreton Bay:</i>		
North West Channel	15.0	2.3 (280m width)
North West Bypass Channel	9.2	1.6
Spitfire Channel	15.0	1.5 (600m width)
East Knoll Bypass Channel	6.0	1.4
East Channel	15.0	1.5 (300m width from western side)
Main Channel (M8 - M9)	10.0	1.8
Entrance Channel (E5 - EBCN)	14.7	1.5
<i>Brisbane River:</i>		
* Outer Bar Cutting	14.0	1.46
* Inner Bar Cutting	14.0	1.46
* Fisherman Islands Swing Basin	14.0	1.3
* Fisherman Islands Swing Basin (11.5)	11.3	0.6
River	9.1	0.6 / 0.9 (draft/tide)
Cement Australia Swing Basin	9.1	0.6 / 0.9 (draft/tide)
Pinkenba Swing Basin	9.0	0.6 / 0.9 (draft/tide)
* Hamilton Swing Basin	8.9	0.6 / 0.9 (draft/tide)
* Indicates new or revised entry.		

**Chart temporarily affected - Aus 235 - Aus 236 - Aus 237 - Aus 238 - Aus 814 - Aus 815**

**739(T)/2014 AUSTRALIA - QUEENSLAND - Moreton Bay - East Knoll - Light buoy re-established**

*Former Notice* - 693(T)/2014 is cancelled

Maritime Safety Queensland Notice 431/2014 (AA756948)

Cancel this notice on receipt.

**Chart formerly affected - Aus 236****740(T)/2014 AUSTRALIA - QUEENSLAND - Moreton Bay - Coochiemudlo Island - Wreck**

Maritime Safety Queensland Notice 432(T)/2014 (AA756976)

A stranded wreck marked by a special light buoy, *Fl.Y.2-5s*, exists in position 27° 33'.94 S 153° 20'.40 E.

Mariners are advised to navigate with caution in the area.

**Chart temporarily affected - Aus 236****741(T)/2014 AUSTRALIA - QUEENSLAND - Shoalwater Bay - Triangular Islands - Military exercise**

*Date* - Until 26 August 2014

Maritime Safety Queensland Notice 452(T)/2014 (AA757848)

Military exercise will be conducted in the Shoalwater Bay training area during the period 10 to 25 August 2014.

A marine danger area extends to all waters within a 3M radius of position 22° 22'.58 S 150° 30'.40 E.

All waters, creeks, beaches and other areas within the declared marine danger area are not available for access.

Mariners are advised to keep clear of this area throughout the above times.

**Chart temporarily affected - Aus 260 - Aus 367 - Aus 822 - AX 00260S - AX 00260T - AX 00367S - AX 00822S****742(T)/2014 AUSTRALIA - QUEENSLAND - Townsville - Ross River - Harbour works; dredging operations**

*Date* - Until 10 December 2014

Maritime Safety Queensland Notices 422(T)/2014, 447(T)/2014, 449(T)/2014 (AA756977, AA757509, AA757550)

Harbour works associated with the construction of boat ramps and pontoons are in progress in the vicinity of position 19° 16'.48 S 146° 49'.86 E.

A silt curtain marked by lights, *Fl.Y.4s*, exists around the works.

The dredge *Everglade* is conducting dredging operations in the area between positions 19° 16'.15 S 146° 50'.14 E and 19° 16'.64 S 146° 49'.80 E.

Anchoring and mooring is prohibited in this area.

A combination of floating, partially submerged and submerged pipeline exist in the area. The submerged pipeline is marked by special light buoys, *Fl.Y.2-5s*, established either side of the channel crossings indicating the safe channel.. The partially submerged pipeline is marked by special light buoys, *Fl.Y.2-4s*. The floating pipeline is marked by special lights, *Fl.Y.4s*.

The dredge will display appropriate lights and shapes.

Vessels will monitor VHF Ch 12 and Ch 16..

Mariners are advised to navigate with caution in the area.

**Chart temporarily affected - Aus 257****743(T)/2014 AUSTRALIA - QUEENSLAND - Townsville - Ross River - Harbour works completed**

*Former Notice* - 278(T)/2014 is cancelled

Maritime Safety Queensland (AA757709)

Cancel this notice on receipt.

**Chart formerly affected - Aus 257**

**744(T)/2014 AUSTRALIA - QUEENSLAND - Townsville - Ross River - Dredging operations completed**

Former Notice - 383(T)/2014 is cancelled  
Maritime Safety Queensland (AA757709)

Cancel this notice on receipt.

**Chart formerly affected - Aus 257****745(T)/2014 AUSTRALIA - QUEENSLAND - Townsville - Depth information**

Former Notice - 176(T)/2014 is cancelled  
Maritime Safety Queensland Notice 458(T)/2014 (AA757868)

Available depths as at 29 July 2014:

	<i>Metres</i>	<i>Remarks</i>
* Sea Channel	11.5	
* Platypus Channel	10.5	
<i>Outer Harbour:</i>		
Arrival Channel	6.1	
* Departure Channel	9.8	
<i>Inner Harbour:</i>		
* Harbour	11.3	
<i>Berths:</i>		
* No 1	11.6	
* No 2	11.8	
No 3	11.4	
* No 4	10.1	
* No 7	11.6	
* No 8	13.0	
* No 9	10.9	
Between No 9 and No 10	7.3	Seaward of 0 mark at No 10
* No 10	11.2	
* No 11	9.8	
Ross River Channel	2.2	Entrance to beacon No 6
Ross River	-	Upstream of beacon No 6
Ross Creek	-	
* Indicates new or revised entry.		

**Chart temporarily affected - Aus 256 - Aus 257****746(T)/2014 AUSTRALIA - QUEENSLAND - Trinity Inlet to Haycock Island - Scientific instruments recovered**

Former Notice - 768(T)/2013 is cancelled  
Maritime Safety Queensland Notice 444(T)/2014 (AA757402)

Cancel this notice on receipt.

**Chart formerly affected - Aus 262 - Aus 263 - Aus 264 - Aus 830 - AX 63262 - AXA 0830T****747(T)/2014 AUSTRALIA - NORTHERN TERRITORY - Darwin - Charles Point Patches to Middle Arm - Dredging operations completed**

Former Notice - 536(T)/2014 is cancelled  
Darwin Port Corporation Notice 104(T)/2014 (AA756268)

Cancel this notice on receipt.

**Chart formerly affected - Aus 24 - Aus 26 - Aus 309 - Aus 722 - AX 00026T - AX 00309U - AX 00309T - AX 00722T**



**748(T)/2014 AUSTRALIA - NORTHERN TERRITORY - WESTERN AUSTRALIA - Darwin to Port Hedland - Survey operations**

Date - Until 7 November 2014

EGS Survey Pty Ltd (AA753420), Port Hedland Port Authority Notice 67(T)/2014 (AA757291)

MV *Empress* is conducting survey operations until 1 September between the following positions:

19° 54'.29 S 118° 37'.07 E

19° 56'.08 S 118° 37'.14 E

19° 59'.83 S 118° 39'.34 E

20° 12'.11 S 118° 40'.99 E

20° 18'.38 S 118° 36'.84 E

and from 8 September between the following positions:

12° 15'.46 S 130° 35'.13 E

12° 20'.57 S 130° 42'.25 E

12° 26'.26 S 130° 47'.13 E

12° 26'.45 S 130° 49'.91 E

and;

11° 49'.90 S 130° 30'.56 E

11° 51'.91 S 130° 30'.15 E

12° 15'.46 S 130° 35'.13 E.

MV *Samson Explorer* is conducting survey operations between the following positions:

12° 15'.46 S 130° 35'.13 E

11° 59'.73 S 129° 57'.29 E

11° 18'.91 S 127° 24'.21 E

11° 22'.49 S 127° 20'.64 E

11° 21'.89 S 126° 37'.54 E

13° 26'.04 S 124° 35'.54 E

13° 37'.47 S 124° 08'.25 E

13° 46'.90 S 123° 21'.11 E

13° 45'.18 S 123° 15'.25 E

13° 59'.73 S 123° 03'.27 E

13° 53'.16 S 122° 19'.55 E

13° 57'.87 S 122° 03'.27 E

14° 08'.30 S 122° 01'.98 E

14° 32'.87 S 121° 39'.27 E

14° 53'.73 S 121° 24'.55 E

14° 58'.16 S 121° 15'.26 E

15° 02'.02 S 120° 34'.83 E

16° 34'.74 S 118° 36'.11 E

17° 09'.88 S 118° 05'.83 E

17° 20'.60 S 118° 00'.97 E

17° 38'.60 S 118° 00'.26 E

17° 47'.74 S 118° 02'.83 E

18° 28'.46 S 118° 32'.83 E

19° 31'.40 S 118° 37'.53 E

19° 33'.58 S 118° 35'.86 E

19° 54'.29 S 118° 37'.07 E.

**Chart temporarily affected - Aus 24 - Aus 26 - Aus 29 - Aus 43 - Aus 52 - Aus 53 - Aus 309 - Aus 311 - Aus 312 - Aus 314 - Aus 315 - Aus 316 - Aus 319 - Aus 320 - Aus 322 - Aus 326 - Aus 722 - Aus 739 - Aus 740 - Aus 4721 (INT 721) - Aus 4722 (INT 722) - AX 00026T - AX 00309T - AX 00309U - AX 00311U - AX 00312U - AX 00314U - AX 00315U - AX 00319U - AX 00322U - AX 00722T - AX 04721U - AX 04722U**

**749(T)/2014 AUSTRALIA - WESTERN AUSTRALIA - Dampier - Mermaid Sound - Obstructions**

Former Notice - 127(T)/2012 is cancelled

Australian Hydrographic Service (AA756935)

Note: incorporated in new edition Aus 57 and Aus 58.

Cancel this notice on receipt.

**Chart formerly affected - Aus 57 - Aus 58**

**750(T)/2014 AUSTRALIA - WESTERN AUSTRALIA - Gulf of Carpentaria - Seismic survey***Date* - Until 25 August 2014

Australian Maritime Safety Authority Auscoast Warning 176/2014 (AA757279), Gulf Energy Ltd (AA757320)

SV *Aquila Explorer* is conducting a survey in an area bounded by the following positions:

10° 54'.0 S 140° 44'.0 E

10° 54'.0 S 139° 41'.0 E

12° 24'.0 S 139° 41'.0 E

12° 24'.0 S 140° 44'.0 E.

**Chart temporarily affected - Aus 301 - Aus 4720 (INT 720) - AX 04720U****751(T)/2014 AUSTRALIA - WESTERN AUSTRALIA - North West Cape - FPSO off station***Former Notice* - 191(T)/2014 is cancelled*Date* - Until 31 January 2015

Apache Energy Ltd (AA755658, AA756281)

The FPSO *Ningaloo Vision* (21° 24'.2 S 114° 05'.3 E) is off station; an obstruction with least depth 36m exists in situ.**Chart temporarily affected - Aus 328 - Aus 329 - Aus 744 - Aus 4723 (INT 723) - Aus 4725 (INT 725) - AX 04723U****752(T)/2014 AUSTRALIA - WESTERN AUSTRALIA - Pelsaert Bank - Survey operations***Date* - Until 11 September 2014

Murphy Australia Oil Pty Ltd (AA756513)

MV *Duke* and support vessel *Clive James* are conducting a survey in the area bounded by the following positions:

29° 00'.0 S 114° 10'.0 E

29° 00'.0 S 114° 35'.0 E

29° 55'.0 S 114° 35'.0 E

29° 55'.0 S 114° 10'.0 E.

**Chart temporarily affected - Aus 332 - Aus 333 - Aus 751 - Aus 752 - Aus 753****753(T)/2014 AUSTRALIA - WESTERN AUSTRALIA - Rowley Shoals - Drilling operations westwards***Date* - Until 31 August 2014

Fugro Survey Pty Ltd (AA756533)

MV *Fugro Supporter* is conducting drilling operations in an area bounded by the following positions:

16° 47'.3 S 118° 03'.4 E

16° 47'.3 S 117° 22'.5 E

17° 36'.4 S 117° 22'.5 E

17° 36'.4 S 118° 03'.4 E.

The vessel will display appropriate lights and shapes.

Mariners are advised to navigate with caution in the area.

**Chart temporarily affected - Aus 326 - Aus 4722 (INT 722) - Aus 4723 (INT 723) - AX 04722U - AX 04723U****754(T)/2014 AUSTRALIA - WESTERN AUSTRALIA - Rowley Shoals - Seismic survey westwards completed***Former Notice* - 603(T)/2014 is cancelled

Australian Maritime Safety Authority Auscoast Warning 156/2014 (AA756253)

Cancel this notice on receipt.

**Chart formerly affected - Aus 326 - Aus 4722 (INT 722) - Aus 4723 (INT 723) - AX 04722U - AX 04723U****755(T)/2014 AUSTRALIA - WESTERN AUSTRALIA - Rowley Shoals - Drilling operations westwards completed***Former Notice* - 602(T)/2014 is cancelled

Gardline Marine Sciences Pty Ltd (AA756717)

Cancel this notice on receipt.

**Chart formerly affected - Aus 326 - Aus 4722 (INT 722) - Aus 4723 (INT 723) - AX 04722U - AX 04723U**

**756(T)/2014 AUSTRALIA - WESTERN AUSTRALIA - Sahul Banks - Scientific instruments**

Date - Until 31 July 2015

MetOcean Engineers (AA757663)

Scientific instruments exist as follows:

<i>Position</i>	<i>Remarks</i>
11° 57'.79 S 124° 39'.18 E	special pillar light buoy, Q(5)Y.20s
11° 57'.79 S 124° 39'.71 E	orange spherical light buoy, Q(5)Y.20s
11° 57'.23 S 124° 39'.72 E	5 poly floats
11° 57'.23 S 124° 40'.28 E	orange spherical light buoy, Q(5)Y.20s
11° 57'.24 S 124° 39'.16 E	15m subsurface
11° 57'.67 S 124° 40'.27 E	seabed

**Chart temporarily affected - Aus 314 - AX 00314U****757(T)/2014 AUSTRALIA - WESTERN AUSTRALIA - Sahul Banks - Pipeline southwards**

Date - Until 30 June 2015

ConocoPhillips Australia (AA753842)

Vessels *Seven Eagle* and *Skandi Acergy* are conducting pipe laying operations between the following positions:

11° 00'.13 S 126° 41'.98 E  
 11° 01'.28 S 126° 40'.84 E  
 11° 02'.11 S 126° 39'.13 E  
 11° 02'.82 S 126° 38'.51 E  
 11° 03'.55 S 126° 37'.00 E  
 11° 03'.60 S 126° 36'.75 E  
 11° 03'.82 S 126° 36'.83 E  
 and;  
 11° 05'.84 S 126° 45'.10 E  
 11° 05'.07 S 126° 44'.69 E  
 11° 04'.67 S 126° 42'.06 E  
 11° 04'.61 S 126° 41'.40 E  
 11° 04'.32 S 126° 40'.79 E  
 11° 03'.69 S 126° 40'.01 E  
 11° 03'.52 S 126° 38'.48 E  
 11° 03'.70 S 126° 37'.45 E  
 11° 03'.78 S 126° 37'.37 E  
 11° 03'.54 S 126° 37'.16 E  
 11° 03'.61 S 126° 36'.76 E  
 11° 03'.82 S 126° 36'.83 E.

Mariners are advised to navigate with caution in the area.

**Chart temporarily affected - Aus 312 - AX 00312U****758(T)/2014 INDIAN OCEAN - Horizon Ridge - Light buoy off station**

Former Notice - 713(T)/2014 is cancelled

Australian Bureau of Meteorology (AA758040)

The light buoy (13° 59'.0 S 110° 00'.0 E) is drifting and currently in position 15° 07'.60 S 103° 07'.69 E (30 July 2014).

**Chart temporarily affected - Aus 4708 (INT 708) - Aus 4723 (INT 723) - AX 04708U - AX 04723U****759(P)/2014 AUSTRALIA - VICTORIA - Port Albert Entrance - Shoaling**

Gippsland Ports (DHDB 2691566)

The 2m bank has extended north and a depth 1.1m exists in position 38° 44'.62 S 146° 42'.38 E.

A drying bank (dries 0.2m) exists in position 38° 44'.80 S 146° 41'.73 E.

Note: a block correction will be issued in due course.

**Chart which will be affected - Aus 181 - Aus 182**

**760(T)/2014 AUSTRALIA - VICTORIA - Port Phillip - Great Ship Channel - Shoaling**

*Former Notice* - 723(T)/2011 is cancelled

Victorian Notice 129(T)/2014 (AA756274)

Shoaling, with a least depth of *16.8m*, exists in position 38° 18'.03 S 144° 37'.71 E.

Mariners are advised to navigate with caution in the area.

**Chart temporarily affected - Aus 144 - Aus 158**

**761(T)/2014 AUSTRALIA - VICTORIA - Port Phillip - Brighton - Hulk removed**

*Former Notice* - 665(T)/2014 is cancelled

Victorian Notice 134(T)/2014 (AA757309)

Cancel this notice on receipt.

**Chart formerly affected - Aus 155**

**762(T)/2014 AUSTRALIA - VICTORIA - Port Phillip - Patterson River - Shoaling removed**

*Former Notice* - 714(T)/2014 is cancelled

Victorian Notice 133(T)/2014 (AA757600)

Cancel this notice on receipt.

**Chart formerly affected - Aus 143**

**763(T)/2014 AUSTRIA - VICTORIA - Port Phillip - Corio Bay - Dredging operations**

*Date* - Until 31 October 2014

Victorian Notice 131(T)/2014 (AA757672)

The dredge *Machiavelli* and support vessels will be conducting dredging operations in the vicinity of Corio Quay berth No4 (38° 06'.33 S 144° 22'.02 E) and in the vicinity of the corner of Hopetoun and City Channels (38° 07'.50 S 144° 22'.20 E).

All vessels will display appropriate lights and shapes.

The dredge will maintain a listening watch on VHF Ch 12.

Mariners are advised to navigate with caution in the area.

**Chart temporarily affected - Aus 153 - Aus 157**

## HYDROGRAPHIC REPORTS

<i>Locality</i>	<i>Report</i>	<i>Ship/Authority</i>	<i>Observer</i>
QLD- St Bees Island	Light unlit		I Manson

**NAVIGATION WARNINGS**

*The following radio messages have been received during the period to 31 Jul 2014. Signal copies of these messages may be destroyed. It is recommended that the reprint of Navigational Warnings should be kept in a file or a book divided into areas. Cancellation should be made on receipt of signals and reprints.*

*Rigs on location other than those listed in the latest Section III summary are the subject of Radio Navigational Warnings. Rigs in transit will not be the subject of Warnings.*

**AUSCOAST WARNING**

- 173 Drill rig *Atwood Falcon* in position 21° 20'.95 S 114° 04'.40 E. 2.5M clearance requested.  
 174 Cancelled.  
 175 Cancelled.  
 176 Special purpose vessel *Aquila Explorer* conducting seismic survey in an area bounded by 10° 54'.0 S to 12° 24'.0 S and 139° 41'.0 E to 140° 44'.0 E. 6M clearance requested.

**NAVAREA X WARNINGS**

- 044 Cancelled.  
 045 Cancelled.

**Navigational warnings in force as at 310001UTC JUL 14.****Auscoast**

**2014** 102 136 140 151 152 154 155 160 162 164 165 166 168 172 173 176

**Navarea X**

**2014** Nil.

**Summary of mobile drilling rigs as at 310001UTC JUL 14.**

<i>Name</i>	<i>Position</i>
Stena Clyde	11° 59'.60 S 124° 40'.30 E
Noble Clyde Boudreaux	13° 49'.00 S 123° 19'.35 E
Jack Bates	13° 41'.54 S 122° 48'.21 E
Transocean Legend	13° 40'.91 S 122° 23'.94 E
Deepwater Millennium	16° 20'.80 S 119° 43'.70 E
Atwood Eagle	18° 43'.22 S 118° 42'.23 E
Atwood Osprey	19° 48'.67 S 115° 17'.73 E
Nan Hai 6	19° 15'.50 S 116° 38'.30 E
Ocean America	20° 31'.20 S 114° 49'.41 E
Deepwater Frontier	19° 47'.56 S 114° 38'.96 E
Atwood Falcon	21° 20'.95 S 114° 04'.40 E

**NAVAREA XIV WARNINGS**

- 044 Cancelled.  
 045 Cancelled.  
 046 Cancelled.  
 047 Cancelled.  
 048 Cancelled.  
 049 Cancelled.  
 050 Cancelled.  
 051 Cancelled.  
 052 Cancelled.  
 053 Cancelled.  
 054 Cancelled.

**Navarea XIV warnings in force as at 310001UTC JUL 14.**

**2014** Nil.

*To accompany Australian Notice to Mariners 721/2014*

**TWO-WAY ROUTE**

The Two-Way Route shown on this chart is a ships routing measure that has been adopted by the IMO.

The route keeps ships clear of charted hazards in proximity to its limits and assists in safe and efficient navigation.

In accordance with the International Convention for Safety of Life at Sea, 1974 ships are to maintain a continuous listening watch on VHF channel 16 when practicable. Additionally, ships should note the requirements for reporting to REEFVTS.

The International Regulations for Preventing Collisions at Sea, 1972 apply to all vessels whether navigating within or outside the Two-Way Route. Where safe and practicable, vessels are advised to keep to starboard of the routes centreline.

This IMO-adopted Two-Way Route will enter into force on 1 December 2014 at 0000 hours UTC.

*Note for chart Aus 247*

*To accompany Australian Notice to Mariners 729/2014*

**MARINE FARMS**

Marine farms, which may be floating or fixed structures and their associated moorings should be avoided. The farms are generally marked by buoys or beacons, which may be lit. Their charted positions are approximate.

*Note for chart Aus 748*

*To accompany Australian Notice to Mariners 729/2014*

**MARINE FARMS**

Marine farms, which may be floating or fixed structures and their associated moorings should be avoided. The farms are generally marked by buoys or beacons, which may be lit. Their charted positions are approximate.

*Note for chart Aus 747*

*To accompany Australian Notice to Mariners 729/2014*

**MARINE FARMS**

Marine farms, which may be floating or fixed structures and their associated moorings should be avoided. The farms are generally marked by buoys or beacons, which may be lit. Their charted positions are approximate.

*Note for chart Aus 749*

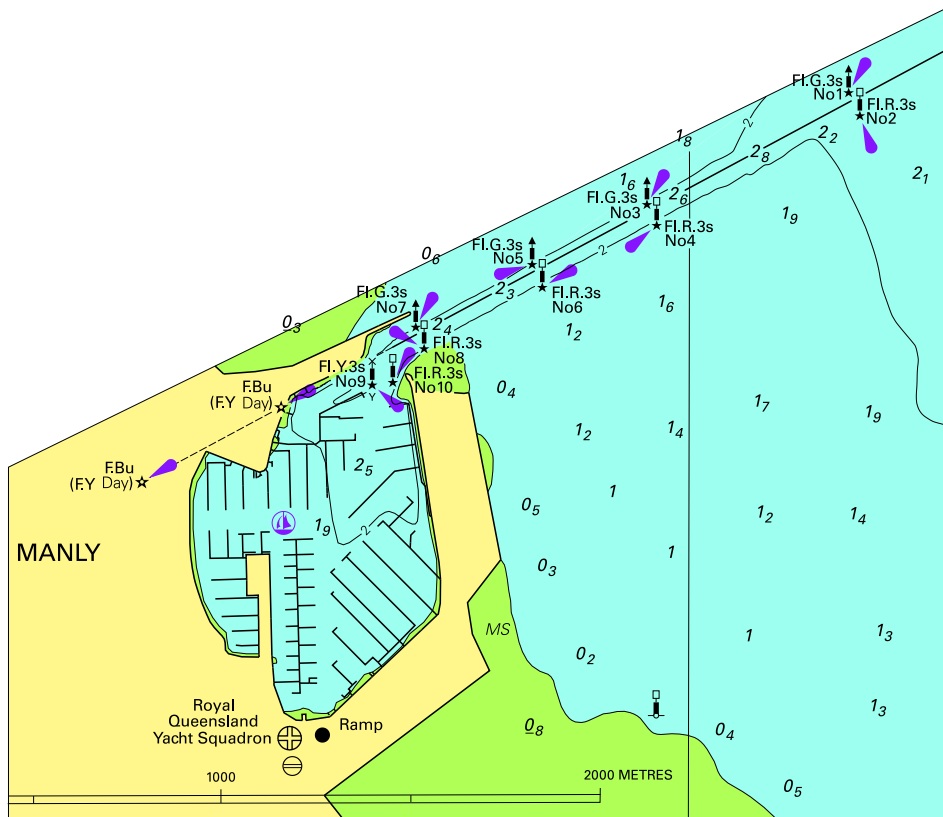


The map displays a proposed two-way route, indicated by a dashed purple line, running diagonally from the top-left towards the bottom-right. The route passes through several areas labeled with numbers: 29 at the top left, 27 along the top edge, 27 in the upper-middle section, 25 in the lower-middle section, and 27 at the bottom right. A specific point on the route is labeled '20 Wk' (likely West Kill) enclosed in a dotted circle. To the right of the route, there are additional labels: 31 near the top right corner, 24 below it, and 27 further down. Two sets of double arrows indicate the direction of travel along the route. A note '(see Note)' is placed near the center of the route. In the bottom right corner, another point is labeled '27 Wk' (likely West Kill) enclosed in a dotted circle. The map also includes geographical coordinates at the top right: 23°09'22"S and 151°18'47"E.

(85.7 x 215.9mm)

© Commonwealth of Australia 2014

To accompany Australian Notice to Mariners 722/2014

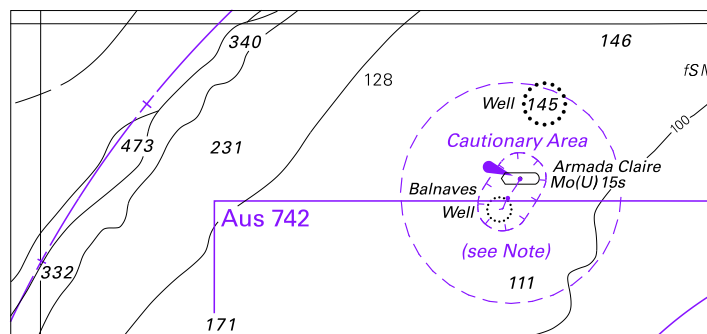


Block for chart Aus 236

© Commonwealth of Australia 2014

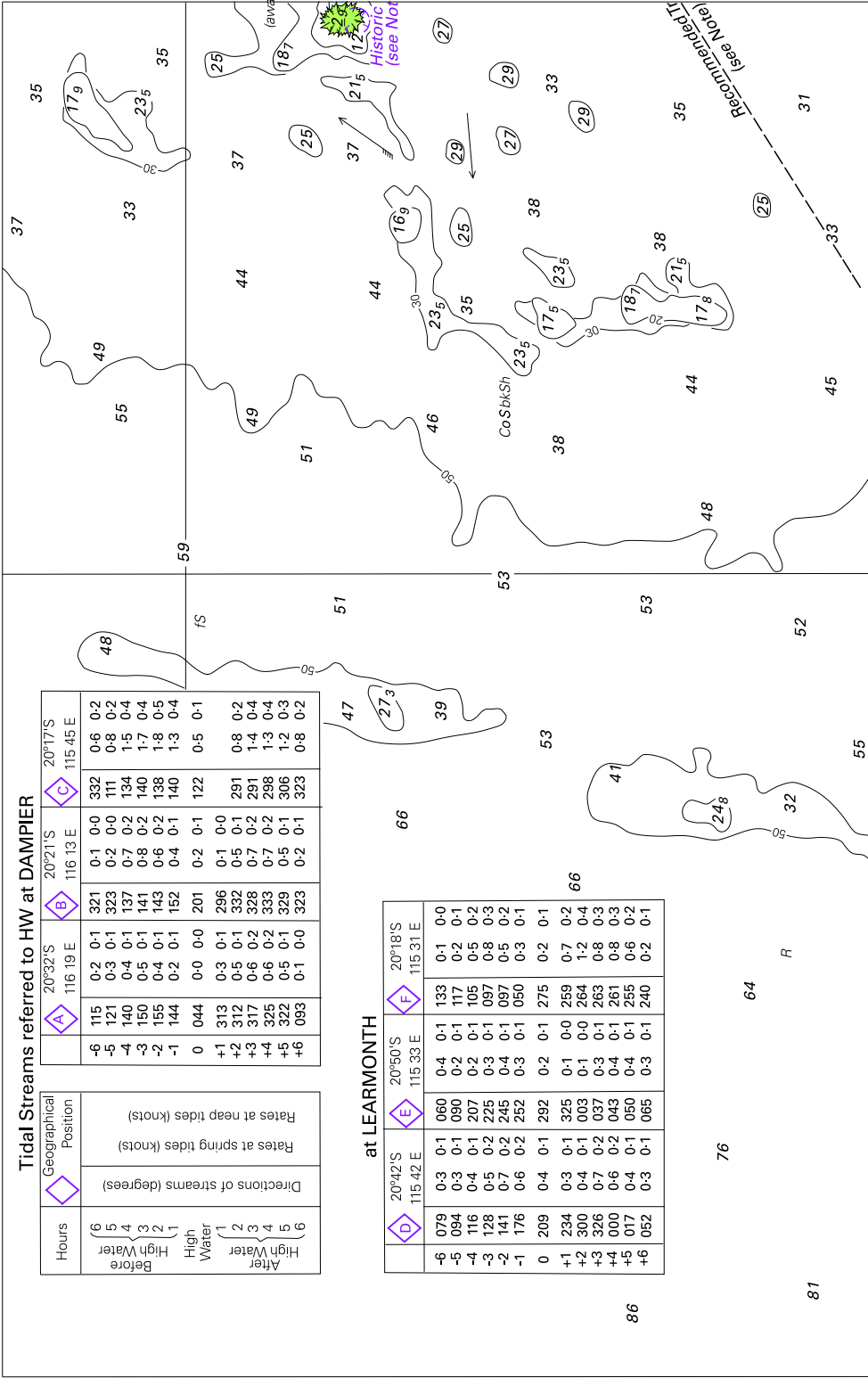
(123.8 x 107.4mm)

To accompany Australian Notice to Mariners 728/2014



© Commonwealth of Australia 2014  
Block for chart Aus 328 (93.6 x 43.2mm)





(204-0 x 128-7mm)

© Commonwealth of Australia 2014

Block B for chart Aus 742